

# Journal of Optoelectronics and Advanced Materials

username:

password:

Go

[Home](#) [Editorial information](#) [Reviewing Procedure](#) [Electronic Journals](#) [Manuscript submission](#)

[Current Volume](#) [Old Volumes](#) [Subscription](#) [Future Issue](#) [Copyright Transfer](#) [Board](#) [Contact](#)

## SITE NEWS

### OAM-RC

Optoelectronics and Advanced  
Materials - Rapid  
Communications OAM-RC  
<http://inoe.inoe.ro/oam-rc>

**INOE Publishing House**  
Integra Natura Omnia et  
Aeterna

## TOP ARTICLES

» **New approaches in order  
to enlarge the grain size of  
bulk CdZnTe (CZT) crystals**

(6441)

» **Relaxation and Light  
Induced Thermal Hysteresis  
(LITH) behaviours in the  
atom-phonon coupling model  
for spin crossover compounds**

(4101)

» **Vectoral response under  
photo-excitation in amorphous  
chalcogenides and  
azobenzene polymer films: a  
comparison** (2931)

## STATISTICS

Last update: 2016-11-04  
Visitors: 2805383

Welcome to our website!

The Journal of Optoelectronics and Advanced Materials (J. Optoelectron. Adv. M.) appears with 12 issues per year and publishes papers in the field of optoelectronics, photonics, and new advanced materials (nonlinear optical materials, crystalline and non-crystalline materials, nano-structured materials, magnetic materials, functional and smart materials, materials based on polymers, biomaterials) of relevance for optoelectronics and photonics. Theoretical papers are encouraged. An important aim of the J. Optoelectron. Adv. M. is to bring together the specialists from related fields: optoelectronics, photonics and materials.

**Manuscripts should be sent to the following e-mail:**

**[joam@inoe.ro](mailto:joam@inoe.ro)**

**For any other information please contact us at:**

**[journals@inoe.ro](mailto:journals@inoe.ro)**

**Starting with 1st January 2009 the Journal will not publish proceedings of the Conferences and short communications.**

Starting with 2010 the journal will publish papers of a length between 5 and 10 printed pages.

## FAST PUBLICATION TAX

**For authors who want a fast publication in our journals, the new tax, starting from January 22, 2015 is in amount of 300 Euros (350 USD, 1400 RON). Authors will be invoiced and the proforma invoice will be sent via e-mail, after the reviewing and the approval of the paper. Please, inform us during the submission of the paper.**

**The impact factor for 2015 is 0.383**

**ISSN: PRINT: 1454 - 4164**

**ON-LINE: 1841 - 7132**

username:

password:

Go

# Journal of Optoelectronics and Advanced Materials

[Home](#)   [Editorial information](#)   [Reviewing Procedure](#)   [Electronic Journals](#)   [Manuscript submission](#)  
[Current Volume](#)   [Old Volumes](#)   [Subscription](#)   [Future Issue](#)   [Copyright Transfer](#)   [Board](#)   [Contact](#)

## SITE NEWS

**OAM-RC**  
Optoelectronics and Advanced  
Materials - Rapid  
Communications OAM-RC  
<http://inoe.inoe.ro/oam-rc>

**INOE Publishing House**  
Integra Natura Omnia et  
Aeterna

## TOP ARTICLES

» **New approaches in order  
to enlarge the grain size of  
bulk CdZnTe (CZT) crystals**  
(6441)

» **Relaxation and Light  
Induced Thermal Hysteresis  
(LITH) behaviours in the  
atom-phonon coupling model  
for spin crossover compounds**  
(4101)

» **Vectoral response under  
photo-excitation in amorphous  
chalcogenides and  
azobenzene polymer films: a  
comparison** (2931)

## STATISTICS

Last update: 2016-11-04  
Visitors: 2805384

## Board

### EDITOR-IN-CHIEF

#### Adrian Petris

(Optoelectronics and Photonics)

National Institute for Laser, Plasma and Radiation Physics

Magurele-Ifov, Romania

### EDITOR-IN-CHIEF

#### Mihai Popescu

(Adv. Materials)

National Institute of Materials Physics,

Magurele-Ifov, Romania

### DIRECTOR OF PUBLICATION

#### Roxana Savastru

National Institute for Optoelectronics

Magurele-Ifov, Romania

### Deputy DIRECTOR OF PUBLICATION

#### Roxana Radvan

National Institute for Optoelectronics,

Magurele-Ifov, Romania

### EDITORIAL BOARD

#### Mario Bertolotti

University La Sapienza, Rome, Italy

#### Punit Boolchand

University of Cincinnati, Ohio, USA

#### Costas Fotakis

FORTH-IESL, Heraklion, Greece

#### Nicuser V. Iftimia

Physical Sciences inc., Andover, MA, USA

#### Jacques Lucas

Glass and Ceramic Lab., University of Rennes, France

#### Ion N. Mihailescu

National Institute for Laser, Plasma and Radiations Physics, Magurele-Ifov,  
Romania

#### Bouchta Sahraoui

University of Angers, France

#### Florin Vasiliu

National Institute of Materials Physics, Magurele-Ifov, Romania

### CONSULTING BOARD

**Hans Bradaczek**

EFG International, Berlin, Germany

**Stephen R. Elliott**

Cambridge University, UK

**Neville Greaves**

University of Wales, Aberystwyth, UK

**Koichi Shimakawa**

Gifu University, Japan

**Ionel Solomon**

Ecole Polytechnique, Palaiseau, France

**Keiji Tanaka**

Hokkaido University, Sapporo, Japan

**Athanasie Trutia**

University of Bucharest, Romania

#### **ADVISORY BOARD**

**Horia Alexandru**

University of Bucharest, Romania

**Stefan Antohe**

University of Bucharest, Romania

**Dan Apostol**

Nat. Instit. for Laser, Plasma, Rad. Physics,

Magurele-Ifov, Romania

**Boyang Liu**

Northin University, Evaston, USA

**Ernesto Dieguez**

University of Madrid, Spain

**Dan C. Dumitras**

Nat. Instit. for Laser, Plasma, Rad. Physics,

Magurele-Ifov, Romania

**Kaikai Xu**

University of Electronic Science and Technology of China,

Chengdu, China

**Luca Fiorani**

ENEA, Frascati, Italy

**Roberto Fornari**

Institute for Crystal Growth (IKZ), Berlin, Germany

**Miloslav Frumar**

Pardubice Univ., Czech Rep.

**Nikolaos Georgoulas**

Democritus University of Thrace, Xanthi, Greece

**Constantin Grigoriu**

Nat. Instit. for Laser, Plasma, Rad. Physics,

Magurele-Ifov, Romania

**Walter Hoyer**

Chemnitz Univ. of Technology, Germany

**Bogdan Idzikowski**

Institute of Molecular Physics,

PAS, Poznan, Poland

**Mihai Iovu**

Center of Optoelectronics,

Chisinau, Moldova

**Wolfgang Kautek**

University of Vienna, Austria

**Sandor Kokenyesi**

University of Debrecen, Hungary

**Alexander Kolobov**

CANFOR-AIST, Tsukuba, Japan

**Donghui Li**  
Purdue University, USA

**Bernardo Molinas**  
Venezia Tecnologie Spa, Italy

**Javier Piqueras**  
Univ. Complutense, Madrid, Spain

**Aurel Popescu**  
University of Bucharest, Romania

**Ion M. Popescu**  
University Politehnica of Bucharest, Romania

**Niculae Tiberiu Puscas**  
University Politehnica of Bucharest, Romania

**Kathleen Richardson**  
School of Mater. Sci. Eng. Clemson University, NC, USA

**Alexandros Rigas**  
Democritus University of Thrace, Xanthi, Greece

**Peter Rudolph**  
IKZ-Berlin, Germany

**Keshra Sangwal**  
Lublin University of Technology, Poland

**Liang Tang**  
Stanford University, USA

**Cristian Teodorescu**  
National Institute of Materials Physics,  
Magurele-Ifov, Romania

**Valentin Teodorescu**  
National Institute of Materials Physics,  
Magurele-Ifov, Romania

**Ladislav Tichý**  
Inst. Molec. Chem. Acad. Sci. Prague, Czech Republic

**Stefan Ioan Voicu**  
University Politehnica of Bucharest, Romania

#### **PUBLISHING BOARD**

**Mihaela Dragan**

#### **PRODUCTION AND HANDLING**

**Maria Nedelcu**

# Journal of Optoelectronics and Advanced Materials

username:

password:

Go

[Home](#)   [Editorial information](#)   [Reviewing Procedure](#)   [Electronic Journals](#)   [Manuscript submission](#)  
[Browse Volumes](#)   [Archive \(1999-2006\)](#)   [Subscription](#)   [Copyright Transfer](#)   [Board](#)   [Contact](#)

## SITE NEWS

**OAM-RC**  
Optoelectronics and Advanced Materials - Rapid Communications OAM-RC  
<http://inoe.inoe.ro/oam-rc>

**INOE Publishing House**  
Integra Natura Omnia et Aeterna

## TOP ARTICLES

» New approaches in order to enlarge the grain size of bulk CdZnTe (CZT) crystals (8897)

» Relaxation and Light Induced Thermal Hysteresis (LITH) behaviours in the atom-phonon coupling model for spin crossover compounds (4339)

» Vectorial response under photo-excitation in amorphous chalcogenides and azobenzene polymer films: a comparison (3168)

## STATISTICS

Last update: 2017-12-08  
Visitors: 3323738

### [Prism coupling technique for characterization of the high refractive index planar waveguides](#)

Author: V. PRAJZLER, P. NEKVINDOVA, M. VARGA, J. BRUNCKO, Z. REMES, A. KROMKA

Viewed 188 times

### [FTDT investigations for fabrication of sub-wavelength metal wire-grid polarizer and quarter waveplate](#)

Author: C. COTIRLAN-SIMIONIUC, C. LOGOFATU, G. IORDACHE, A. RIZEA, D. V. URSU, C. MARIN

Viewed 85 times

### [Refractive and birefringent properties and order parameter of nematic liquid crystal at the direct and reverse nematic – isotropic liquid phase transition](#)

Author: A. E. MAMUK, A. NESRULLAJEV

Viewed 71 times

### [Precise simulation of thermal effects in side diode-pumped laser slab](#)

Author: M. H. MOGHADDER DINDARLU, GH. SOLOOKINEJAD, H. IZADNESHAN, M. JABBARI, M. NAFAR

Viewed 62 times

### [Design and optimization of four channel Dense Wavelength Division Multiplexing demultiplexer using photonic crystals square resonant cavity](#)

Author: V. R. BALAJI, M. MURUGAN, S. ROBINSON

Viewed 81 times

### [Optical solitons with resonant nonlinear Schrodinger`s equation using three integration schemes](#)

Author: F. TCHIER, B. KILIC, M. INC, M. EKICI, A. SONMEZOGLU, M. MIRZAZADEH, H. TRIKI, D. MILOVIC, Q. ZHOU, S. P. MOSHOKOA, ANJAN BISWAS, M. BELIC

Viewed 69 times

### [Wavelength insensitive fused fiber coupler in asymmetric heating of arc discharge](#)

Author: ARINDAM BISWAS, B. K. RAY, HIMANSHU, C. KONER, S. CHAKRABORTY, K. N. HUI

Viewed 62 times

### [Binary PSO algorithm assisted to investigate the optical AND gate based- plasmonic nano- rods](#)

Author: M. AKHLAGHI, F. EMAMI, N. NOZHAT

Viewed 58 times

### [Detection of Rhodamine B levels in distilled water based on displacement sensor using fiber coupler and concave mirror](#)

Author: SAMIAN, A. H. ZAIDAN, MOH. YASIN

Viewed 66 times

### [Dual mode SDOCT-HSI approach for cancer surgery guidance](#)

Author: D. SAVASTRU, S. MICLOS, N. IFTIMIA, M. A. CALIN, R. SAVASTRU, D. MANEA, S. DONTU

Viewed 52 times

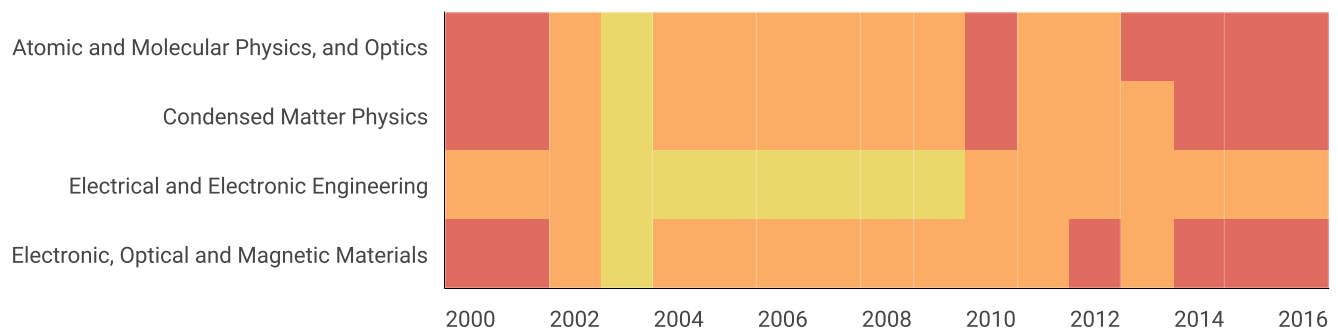
# Journal of Optoelectronics and Advanced Materials

<b>Country</b>	Romania
<b>Subject Area and Category</b>	<a href="#">Engineering</a> <a href="#">Electrical and Electronic Engineering</a>  <a href="#">Materials Science</a> <a href="#">Electronic, Optical and Magnetic Materials</a>  <a href="#">Physics and Astronomy</a> <a href="#">Atomic and Molecular Physics, and Optics</a> <a href="#">Condensed Matter Physics</a>
<b>Publisher</b>	National Institute of Research and Development for Optoelectronics
<b>Publication type</b>	Journals
<b>ISSN</b>	14544164
<b>Coverage</b>	1999-ongoing
<b>Scope</b>	<p>The Journal of Optoelectronics and Advanced Materials appears with 6 issues per year and publishes Holy Grail papers, featured articles, review papers, research papers, technical notes and short communications in the field of optoelectronics and new advanced materials: optoelectronic devices, crystals of relevance in optoelectronics, amorphous and glassy materials, nanostructured materials and devices, magnetic materials, functional and smart materials. Theoretical papers are encouraged. Papers dealing with biomaterials and optoelectronic applications for medical purposes are accepted. An important aim of the Journal is to bring together the specialists from related fields: optoelectronics and materials. (<a href="#">source</a>)</p>

40

H Index

## Quartiles

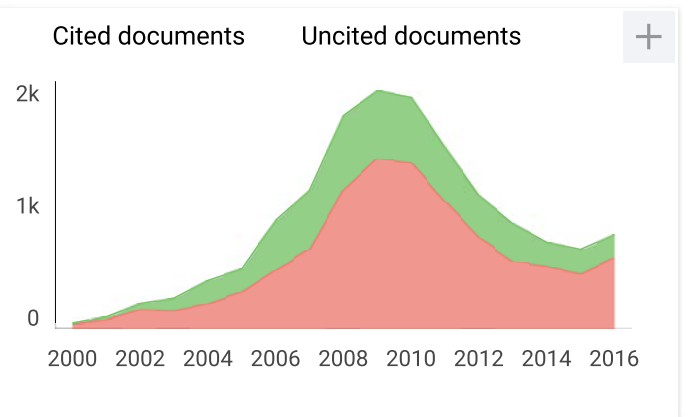
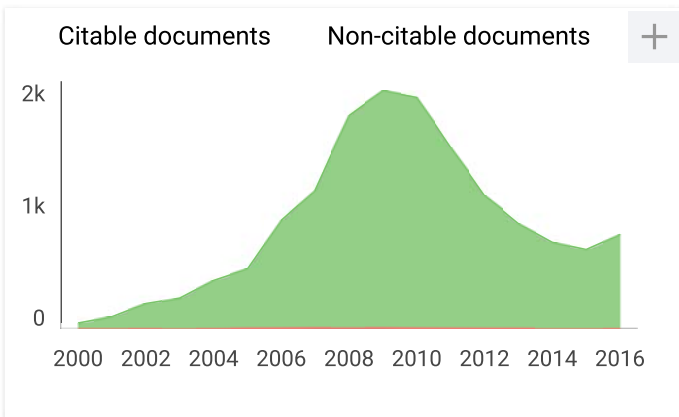
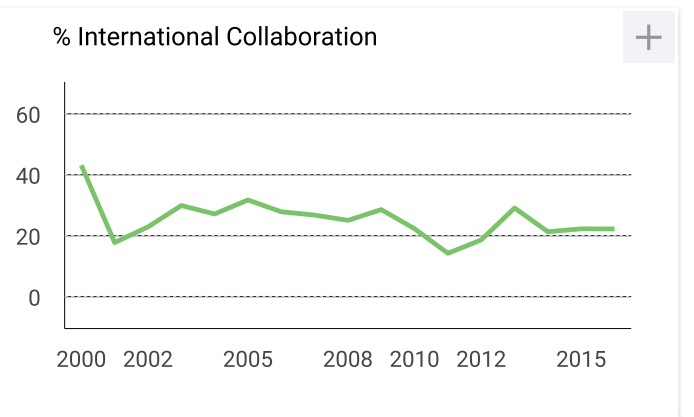
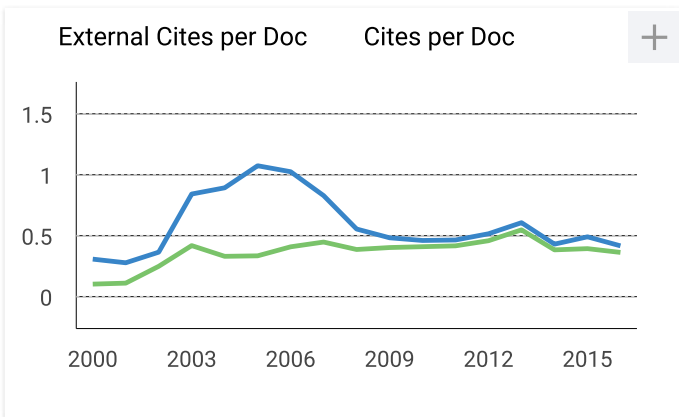
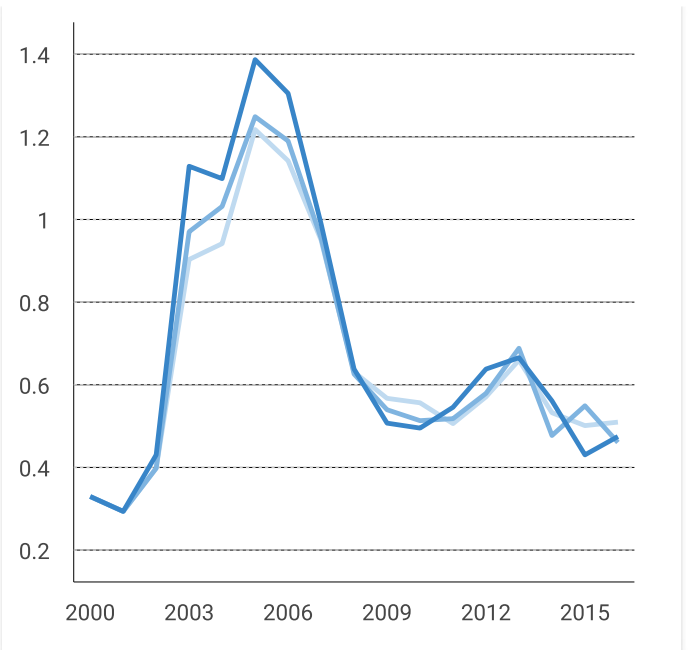
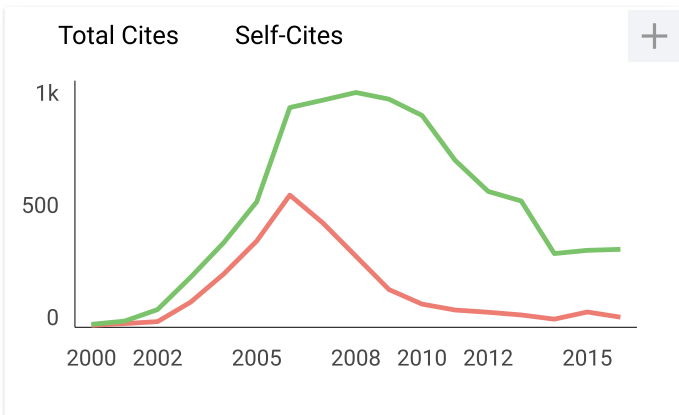
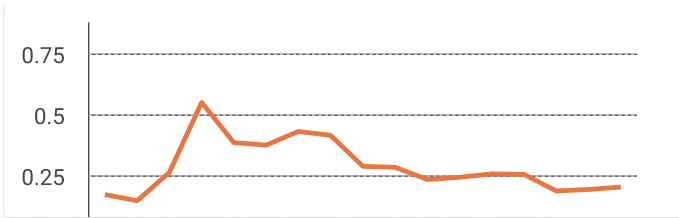


SJR

+

Citations per document

+



Journal of Optoelectronics and Advanced Materials

Indicator	2009-2016	Value
SJR		0.2
Cites per doc		0.43
Total cites		316

www.scimagojr.com

← Show this widget in your own website

Just copy the code below and paste within your html code:

```
<a href="http://www.scimagr
```

Developed by:



Powered by:



Follow us on Twitter

Scimago Lab, Copyright 2007-2017. Data Source: Scopus®

EST MODUS IN REBUS  
Horatio (Satire 1,1,106)

---



# Detection of Rhodamine B levels in distilled water based on displacement sensor using fiber coupler and concave mirror

SAMIAN\*, A. H. ZAIDAN, MOH. YASIN

*Physics Department, Faculty of Science and Technology, Universitas Airlangga, Surabaya (60115), Indonesia*

Detection of Rhodamine B levels in distilled water based on displacement sensor can be done using fiber coupler and concave mirrors as reflector. The mechanism of detection is done through changes in the value of the voltage peaks due to absorption of Rhodamine B solution against the green light with a wavelength of 532 nm. This sensor system capable of detecting Rhodamine B levels in distilled water with a range of 0 – 8 ppm and a resolution of 0.02 ppm.

(Received May 9, 2016; accepted November 25, 2016)

*Keywords:* Fiber coupler, Displacement sensor, Rhodamine B levels, Absorption spectrum

## 1. Introduction

Optical fiber as a waveguide has been widely applied as sensors, such as displacement sensor based on modulation of intensity. Displacement sensor using fiber coupler and fiber bundle as a probe capable of detecting a shift in the flat mirror target [1,2] and concave mirror target [3] with the reflection technique. Displacement sensor using fiber coupler with a flat mirror as target has a characteristic that output voltage detector decreases exponentially with when target displacement increase. Meanwhile, displacement sensor using fiber bundle and concave mirror generate output voltage peaks at certain position between targets with the probe.

The medium between target and probe on fiber-optic displacement sensor is liquid. As the result, a change in voltage peaks or shift of voltage peaks will occur. This principle has been used to detect changes in refractive index of liquid [4], salinity levels [5] and glucose levels [6]. Change in the value or voltage peak position occurs due to changes in the level of measured substance which causes changes in refractive index of liquid. Another method to detect liquid levels is the technique of side-emitting and surface plasmon resonance (SPR) on the optical fiber. The method of side-emitting is done by replacing part of the cladding with polymer material (novolac) and used to detect alcohol levels [7]. SPR method is accomplished by coating the tip of optical fiber with silver so that the change of resonance wavelength of the optical fiber is occurred when the tip interacts with glycerol solution which experience changes in its level [8]. The latter two methods require a rather complicated technique in making the probe sensor (sensor head).

This paper report Rhodamine B (a dye substance widely used in the paper industry and the textile side) level detection system in distilled water using a displacement sensor based on fiber coupler and the concave mirror as a reflector. The mechanism of detection is based on light absorption of Rhodamine B solution. Green laser with a wavelength of 532 nm was used as a light source. The sensor system proposed in this paper is a preliminary study to develop a simple sensor to detect the presence of Rhodamine B which is widely abused as food and beverages coloring in Indonesia.

## 2. Sensors design and operating principle

The design of Rhodamine B levels sensor in distilled water using fiber coupler and concave mirror is shown in Fig. 1. The mechanism of detection is as follow, the light from the green laser ( $P_{in}$ ) is coupled to the input port of fiber coupler and partly toward the sensing ports. Light output of the sensing port ( $P_e$ ) is then forwarded to the concave mirror through the sample. Part of reflected light from concave mirror will go back to the sensing port ( $P_b$ ) and forwarded to the detector through the detection port ( $P_d$ ). Optical power of light received by detector is read as output voltage of detector.

Shift in the position of sensing port against concave mirror will produce a change in output voltage detector. The relationship between the optical powers of light that goes back to the port against the shifting of sensing port ( $d$ ) is presented in Fig. 2.

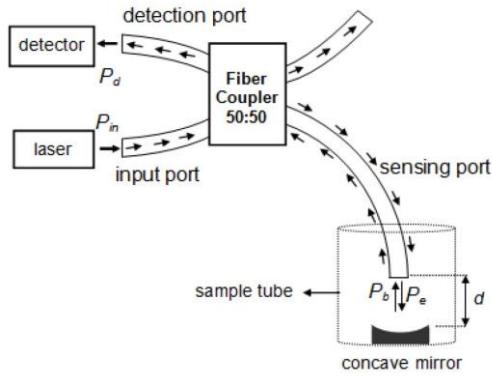


Fig. 1. The design of Rhodamine B level sensors in distilled water using fiber coupler and the concave mirror as reflector.

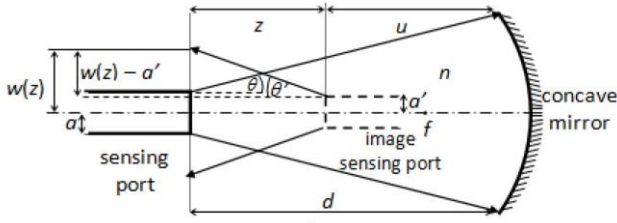


Fig. 2. Geometry of sensing port position against concave mirror

Fig. 2 shows the formation of sensing port image by a concave mirror produces an image with distance ( $u$ ) in accordance with the equation:

$$u = \frac{df}{d-f}, \quad (1)$$

with  $d$  and  $f$  are distance of sensing port to the concave mirror and the focal length of a concave mirror respectively. from image magnification, the image radius of sensing port ( $a'$ ) and refraction angle of the light produced by image of sensing port ( $\theta'$ ) can be written in the following forms:

$$a' = \frac{u}{d} a \quad (2)$$

and

$$\tan \theta' = \frac{u}{d} \tan \theta, \quad (3)$$

with  $a$  and  $\theta$  are the radius and refraction angle of the light formed by sensing ports. If it is assumed that the light output of the sensing port is Gaussian beam, then the optical power that goes into sensing port ( $P_b$ ) can be written as:

$$P_b = P_e \left[ 1 - \exp \left( -\frac{2a^2}{w^2(z)} \right) \right], \quad (4)$$

with  $P_e$  is the total power of light that does not depend on the position of  $z$  and  $w(z)$  is the radius of the light which depend on the position of sensing port against concave mirror ( $d$ ). From geometry in Figure 2, the radius of the beam of light can be written as:

$$w(z) = z \tan \theta' + a'. \quad (5)$$

Using equations (1), (2), and (3), then equation (5) can be rewritten in the following form:

$$w(z) = \frac{fa}{d-f} \left( \frac{d^2 - 2df}{(d-f)a} \tan \sin^{-1} \left( \frac{NA}{n} \right) + 1 \right) \quad (6)$$

Angle  $\theta$  that should be in the equation (6) has been replaced with a numerical aperture of optical fiber i.e.  $NA = n \sin \theta$  with  $n$  is the refractive index of medium between the sensing ports with concave mirror. Substituting equation (6) into the equation (4) will give the relation between optical power of light which enters the sensing port against displacement of the sensing port and can be written as:

$$P_b = P_e \left( 1 - \exp \left( -\frac{2(d-f)^2 / f^2}{\left( \frac{d^2 - 2df}{(d-f)a} \tan \sin^{-1} \left( \frac{NA}{n} \right) + 1 \right)^2} \right) \right). \quad (7)$$

Travel light from the input port – concave mirror – detection port can be written in the form of the following equation:

$$P_d = P_0 \left( 1 - \exp \left( -\frac{2(d-f)^2 / f^2}{\left( \frac{d^2 - 2df}{(d-f)a} \tan \sin^{-1} \left( \frac{NA}{n} \right) + 1 \right)^2} \right) \right) \quad (8)$$

with:

$$P_0 = 1.15cr(1-cr) \left( 10^{-0.1Le} - 2 \times 10^{-0.1D} \right)^2 P_{in}, \quad (9)$$

where  $cr$ ,  $Le$ , and  $D$  are coupling ratio, excess loss, and directivity of fiber coupler respectively, while the  $P_{in}$  is the optical power of the light from laser coupled to the input port [1].

Plot of relation between  $P_b$  with  $d$  for four values of refractive index of the medium ( $n$ ) using the equation (7) exclude value of  $d = f$  is shown in Figure 3. An increase in the value of refractive index of the medium between the sensing port and concave mirror causes an increase in the value of the voltage peaks. It is due to the properties of medium to refract the light.

On the other hands, if medium has properties to absorb the light that passed through it, then the Beer's Law will apply to this situation. The application of Beer's Law is shown through the following equation:

$$P = P_0 \exp(-2dec) \quad (10)$$

with  $P$  and  $P_0$  are optical power of the light before and after passing through the material. While  $e$  and  $c$  are absorption coefficient of the material and concentration of the medium respectively. In the sensor detection mechanism as shown in Figure 1,  $2d$  is the optical path length traveled by light. Optical power that goes back to the sensing port based on equation (7) opposite when compared to the equation (8).

In this paper, because Rhodamine B solution absorbs green laser light, then the mechanism of detection is based on absorption principle. This mechanism requires that the changes of level in Rhodamine B is not too large so that the light refraction effects can be minimized.

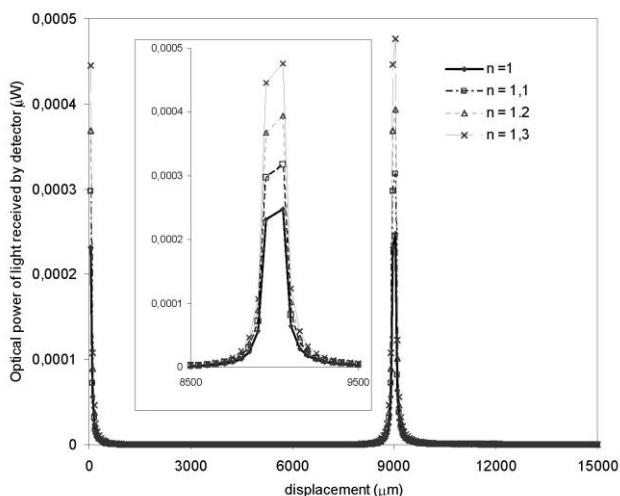


Fig. 3. Graphic simulation of the relationship between the optical powers of the light coming into the sensing port against displacement with the value of the refractive index of the medium.

### 3. Experiment

Schematic diagram of Rhodamine B level sensors experiment is shown in Fig. 4. The experimental set-up consists of green lasers with wavelength of 532 nm and output power of 10 mW as the light source, PDA 100A as optical detectors with a multimeter (Fluke) to read the output voltage.

Fiber coupler used in this experiment is multimode with structured 2 x 2 made of plastic (2.2 mm diameter fiber with jacket, 1 m length, 50/50 split ratio, 3.7 – 5.6 dB insertion loss, and 1.6 dB excess for loss). Focal length and diameter of concave mirror are 4.5 mm and 9 mm (protected aluminum) respectively as a reflector which is placed at the base of the sample container with shape of cuboid that has dimension 5 cm x 5 cm x 5 cm. Micrometers translator was used to adjust the sensing port.

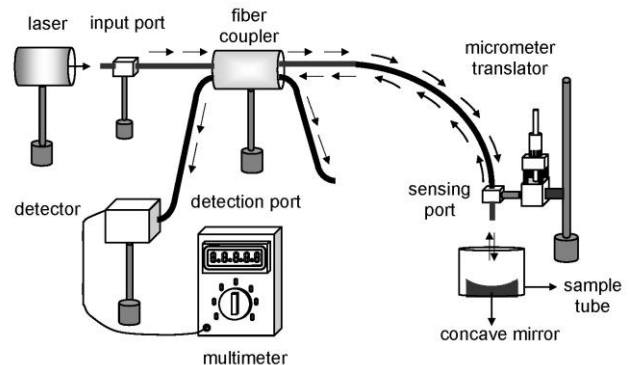


Fig. 4. Experimental set-up of Rhodamine B level in distilled water sensors.

Experimental procedure is performed with the following steps: first, the sensing port placed nearly coincide with concave mirrors in air medium (displacement 0 mm). Sensing ports are not placed coincide with the concave mirror because it could damage protected aluminum of concave mirror. Furthermore, the sensing port shifted away from concave mirror. Each shift of 100 mm, output voltage detector is recorded. Displacement is done until the output voltage detector is unchanged significantly. These steps are repeated for distilled water medium and Rhodamine B solution with the change of 2 ppm in the concentration. The next step is to test the stability of the sensor. The stability test is done by measuring the peak voltage of each sample in time range of 30 s to 900 s. The final step is to measure the refractive index of Rhodamine B solution for each concentration using Abbe Refractometer.

### 4. Result and discussion

Absorption spectrum of Rhodamine B solution in distilled water with concentration of 1 ppm obtained using a UV-Vis spectrophotometer is shown in Fig. 5. It appears that solution of Rhodamine B can absorb light with wavelength of 532 nm (wavelength of the laser used in the experiment) although the absorption peak is at wavelength of 553.60 nm.

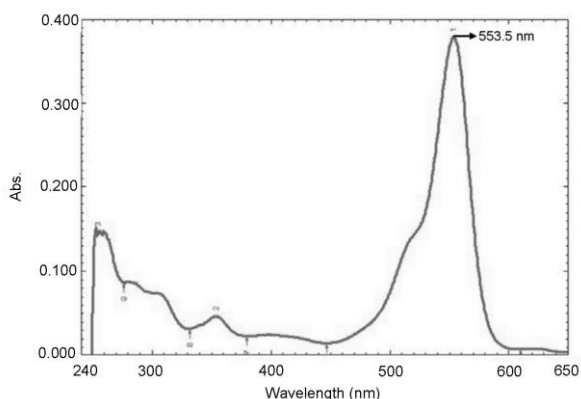


Fig. 5. Absorption spectrum of Rhodamine B solution at concentration of 1 ppm

Fig. 6 shows experimental results of sensing port displacement against concave mirror with medium of air, distilled water and Rhodamine B 2ppm solution. All voltage peaks are not located at a distance radius of curvature of the mirror, i.e. 9 mm. It is due to the position of sensing port which is not coincided with concave mirror at displacement 0. The increase in the value of the voltage peak occurs when the medium was changed from air to distilled water. This increase occurred due to the refraction of the medium. The increasing value of the refractive index of the medium (refractive index of distilled water from measurement using Abbe refractometer is 1.333) that causes angle  $\theta$  in Fig. 2 become smaller. As a result, the optical power coming into port sensing increases. Equations (8) can explain the changes in refractive index medium.

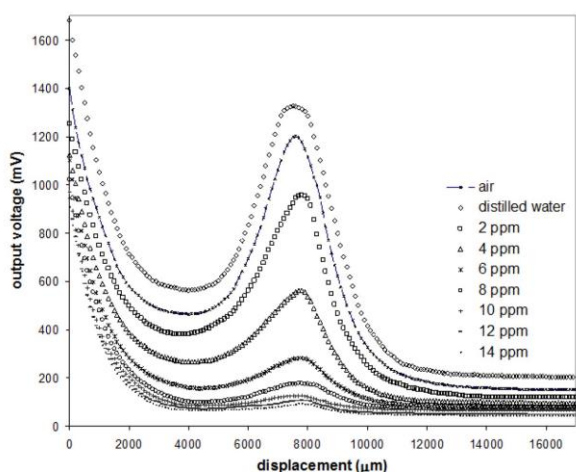


Fig. 6. Output voltage detectors against displacement of sensing port for air medium and various concentration of Rhodamine B solution

In case of solution of Rhodamine B was used as medium, the peak voltage decreases when concentrations of Rhodamine B increases. The concentration limit detectable (generate peak voltage) was 14 ppm. For concentrations larger than 14 ppm, peak voltage no longer

appears. Measurement results of refractive index of Rhodamin B solution at concentration 2-14 is constant at 1.338. Thus the working principle of the sensor is based on absorption (absorption solution of Rhodamine B against a green laser) and not based on the principle of refraction. Fig. 7 shows the relationship between the positions of peak voltage against the concentration in range of 0 – 14 ppm. It appears that the trend is not constant therefore detection of Rhodamine B levels through peak voltage position is not reliable.

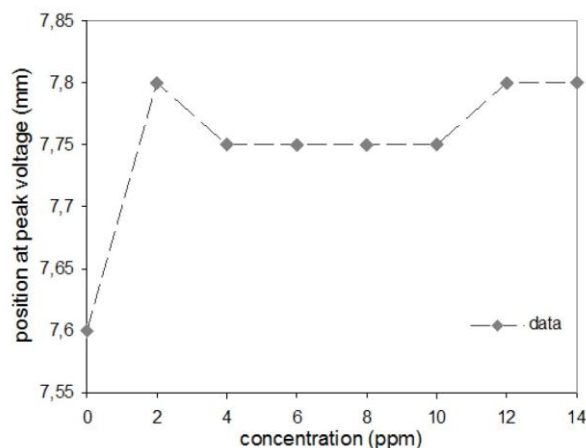


Fig. 7. The position of the peak voltage as a function of concentration of Rhodamine B solution.

The relationship between the peak voltage against concentration of Rhodamine B solution is shown in Fig. 8. The fitting results of data using equation (10) produces a very good suitability (values  $R = 0.979$ ). Fitting equation justified that detection mechanisms of Rhodamine B levels using fiber coupler as the sensor follows beer's Law. If it is assumed that the optical path length is twice the average value of peak voltage position ( $2d = 15.5$  mm), then it can be determined that absorption coefficient of Rhodamine B solution to light with wavelength of 532 nm is 0.0133/ppm-mm.

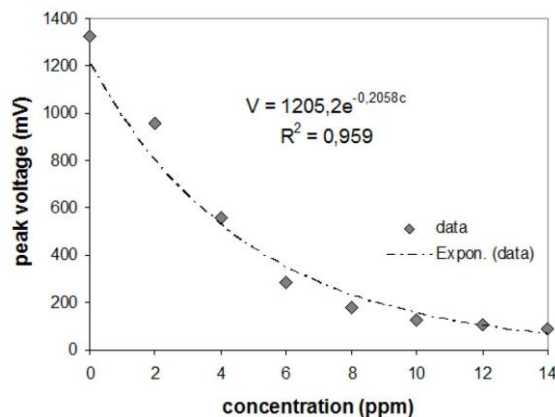


Fig. 8. Peak voltage as a function of concentration of Rhodamine B with data fitting results.

The linear relationship between voltage peak against concentration of Rhodamine B solution is shown in Fig. 9. It occurs that linear region is at range of 0 ppm – 8 ppm and linear slope, i.e. the sensitivity sensor, is equal to 148.6 mV/ppm with linearity greater than 95 %.

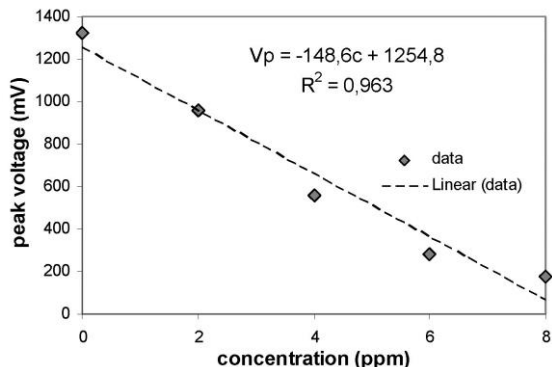


Fig. 9. Linear region of voltage peak against concentration of Rhodamine B solution

The sensor stability test was done by measuring voltage peak for 900 s with 30 s intervals at concentrations of 0 ppm – 8 ppm. The results are shown in Fig. 10. The standard deviation for concentration of 0 ppm, 2 ppm, 4 ppm, 6 ppm, and 8 ppm are 7.7, 4.2 mV, 1.7 mV, 1.3 mV, and 1.3 mV respectively with average 3.2 mV. If resolution of the sensor is average of standard deviation of sensor stability of sensor with sensor sensitivity, then the resolution of sensor is 0.02 ppm.

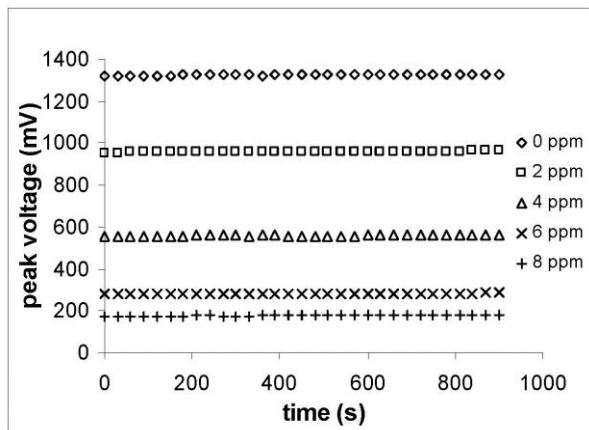


Fig. 10. Stability test results

Overall, the performance of Rhodamine B level sensor in distilled water is shown in Table 1. The working area of the sensors (linear region) for this sensor is small but the resolution is high, i.e. 0.02 ppm. This means that the presence of Rhodamine B in distilled water in very small quantity (0.02 ppm) was able to be detected by the sensor. The results of this initial study can be used for development of sensors with a simple working principle in

detecting the presence of Rhodamine B in a food or beverage or as an environmental pollutant waste.

Table 1. Characteristics of Rhodamine B levels sensor in distilled water

Parameters	Value
Dynamic range (ppm)	0 – 14
Linier region (ppm)	0 – 8
Sensitivity (mV/ppm)	148.6
Resolution (ppm)	0.02

### 5. Conclusion

Detection of Rhodamine B levels in distilled water can be done using fiber coupler-based displacement sensor with concave mirrors as reflector. The detection is done through changes in peak voltage generated from displacement of sensing port against the concave mirror with Rhodamine B solution as medium. The decrease in the peak voltage occurs due to absorption of Rhodamine B solution to green light (wavelength of 532 nm). Results show that sensor system capable of detecting Rhodamine B levels in distilled water with concentration of 0 – 8 ppm and resolution of 0.02 ppm.

### References

- [1] Samian, Y. H. Pramono, A. Y. Rohedi, F. Rusydi, A. H. Zaidan, *Optoelectron. Adv. Mat.* **3**(5), 411(2009).
- [2] M. Yasin, W. S. Harun, H. A. Abdul Rasyid, Kusminarto, Karyono, A. H. Zaidan, H. Ahmad, *J. Optoelectron. Adv. M.* **1**, 549 (2007).
- [3] S. W. Harun, M. Yasin, H. Ahmad, *Laser Physics*, **21**(4), 729 (2011).
- [4] Gobi Govindan, Srinivasan Gokul Raj, Dillibabu Sastikumar, *Journal of American Science* **5**(2), 13 (2009).
- [5] Husna Abdul Rahman, Sulaiman Wadi Harun, M. Yasin, Harith Ahmad, *IEEE Journal Of Selected Topics In Quantum Electronics*, **18**(5), 1529 (2012).
- [6] S. Binu, V. P. Mahadevan Pillai, V. Pradeepkumar, B. B. Padhy , C. S. Joseph, N. Chandrasekaran, *Materials Science and Engineering C* **29**, 183 (2009).
- [7] Masayuki Morisawa, ShinzoMuto, *Journal of Sensors*, **2012**, 1 (2012).
- [8] Yong Zhao, Ze-qun Denga, Qi Wang, *Sensors and Actuators B* **192**, 229 (2014).

\*Corresponding author: samian@fst.unair.ac.id