



Contact Us FAQ Useful links

- Home
- Content and Archives
- Aims and Scopes
- Editorial Board
- Guidance for Authors
- Ethical Guidelines
- Charges
- Membership
- Previously Reviewers
- Conference Events



Biodiversitas Vol. 21, No. 6, June 2020

only search Biodiversitas

Table of Content

- Cover [PDF]
- Editorial Board & Guidance for Authors [PDF]
- 1. Parasitism disruption by ants of *Anagyrus lopezi* (Hymenoptera: Encyrtidae), parasitoid of cassava mealybug MUHAMMAD ZAINAL FANANI, AJUNU RAUF, NINA MARYANA, ALI NURMANSYAH, DADAN HINDAYANA [PDF]
- 2. Biodiversity of nektun in Batangtoru River and its tributaries in North Sumatra, Indonesia DESKRITA, AHMAD MUHTADI, RUSDI LEIDONALD, RINA DËRITA SIBAGARIANG, NURFADILLAH [PDF]
- 3. Species identification of stranded seaweeds on eastern seashores of Thailand and utilization as a sole carbon source for single cell oils synthesized by oleaginous yeasts AIYA CHANTARASIRI [PDF]
- 4. The diversity in nutritional profile of farmed edible birdë's nests from several regions in Indonesia LINA ELFITA, LETJE WIENTARSIH, DONDIN SAJUTHI, INDRA BACHTIAR, HUDA SHALAHUDIN DARUSMAN [PDF]
- 5. Estimation of aboveground biomass using aerial photogrammetry from unmanned aerial vehicle in teak (*Tectona grandis*) plantation in Thailand SASIWIMOL RINNANANG, KAMPANART SIRIRUEANG, SORAVIS SUPAVETCH, PONTHEP MEUNPONG [PDF]
- 6. Phytochemical screening and biological activities of pakoba (*Syzygium luzonense*) stem bark ethanol extract MARIO WALEAN, ROSTIHA MELPIH, MERVINA RONDONUWU, KINZIE FELICIANO PINONTOAN, HENDRA PRATAMA MALIANGKAY, MELI ASTRIANI [PDF]
- 37. The density and diversity of plant-parasitic nematodes associated with maize rhizosphere in Malakaji Highland, South Sulawesi, Indonesia HISHAR MIRSAM, AMRAN MUIS, NURNINA NONCI [PDF]
- 38. Short Communication: The presence of extended-spectrum beta-lactamase (ESBL) producing *Escherichia coli* on layer chicken farms in Bitar Area, Indonesia FRESHINTA JELIA WIBISONO, BAMBANG SUMIARTO, TRI UNTARI, MUSTOFA HELMI EFFENDI, DIAN AYU PERMATASARI, ADIANA MUTAMSARI WITANINGRUM [PDF]
- 39. Growth optimization of *Saccharomyces cerevisiae* and *Rhizopus oligosporus* during fermentation to produce tempeh with high β -glucan contents SAMSUL RIZAL, MURHADI, MARIA ERNA KUSTYAWATI, UDIN HASANUDIN [PDF]
- 40. Structure and composition of trees in Mount Tilu Nature Reserve, West Java, Indonesia TRI CAHYANTO, MUHAMMAD EFENDI, DIAN MUHAMAD RAMDAN [PDF]
- 41. Molecular identification of endophytic fungi from torch ginger (*Etilingera elatior*) antagonist to phytopathogenic fungi ANISA LUTFIA, ERMAN MUNIR, YURNALIZA YURNALIZA [PDF]
- 42. The diversity of entomopathogenic fungi collected from leaves and rhizospheres of rice implementing integrated pest management AMINUDIN AFANDHI, ELYKA PUTRI PERTIWI, DICKY PREJEKI PURBA, TITA WIDJAYANTI, AMIN SETYO LEKSONO [PDF]
- 43. Genotypic diversity assessment of some durum wheat (*Triticum durum*) genotypes using RAPD analysis RATIBA BËYUSBA, SARA GUERAICHE, MALIKA RACHED KANOUNI, RABAH BËYUNAR, ABDELHAMID DJEKËYUNE, HICHEM KHAMMAR, YKHELF NADIA [PDF]
- 44. Population genetic structure of Asiatic Hard Clam (*Meretrix meretrix*) in Thailand based on Cytochrome Oxidase subunit I gene sequence VERAKIAT SUPMEE, PRADIT SANGTHONG, APIRAK SONGRAK, JUTHAMAS SUPPAPAN [PDF]
- 45. Environmental efficiency of rice production in Vietnam: An application of SBH-DEA with undesirable output TRUC-LINH LE [PDF]
- 46. Short Communication: Effect of urban greening and land use on air pollution in Chelyabinsk, Russia TATYANA G. KRUPNOVA, OLGA V. RAKOVA, ANNA L. PLAKSINA, SVETLANA V. GAVRILKINA, EVGENY O. BARANOV, ANTON D. ABRAMYAN [PDF]
- 47. Determining relevant petiole anatomy characters to delimit *Eupolypods* I families JEANETTE MARA P. TAN, INOCENCIO E. BUOT, JR. [PDF]
- 48. Potential antagonistic rhizobacteria to control *Colletotrichum scovillei*, the cause of anthracnose disease in chili pepper DEWA NGURAH SUPRAPTA, ANAK AGUNG KETUT DARMADI, KHANDAN KHALIMI [PDF]
- 49. Molecular identification of bacteria isolated from culture medium of rotifer fed on fishery waste diet STENLY WULLUR, HATOPANI NAPTUPULU, LETHA LOISE WANTANIA, ELYY LIKE GINTING, VEIBE WAROUW, SANDRA TILAA, TRINA EKAWATI TALLEI, INNEKE FENNY MELKE RUMENGAN [PDF]
- 50. Morphological and molecular identification of *Fusarium* spp. isolated from maize kernels in Java and Lombok,



- Home
- Content and Archives
- Aims and Scope
- Editorial Board
- Guidance for Authors
- Ethical Guidelines
- Charges
- Membership
- Previously Reviewers
- Conference Events

EDITOR-IN-CHIEF:
Sutarno

EDITORIAL MEMBERS:
English Editors: Graham Egleton (grahamegleton@gmail.com), Suranto (surantouns@gmail.com); Technical Editor & Banking: Artini Pangastuti (pangastuti_tutut@yahoo.co.id), Solichatun (solichatun_s@yahoo.com); Distribution & Marketing: Rita Rakhmawati (oktia@yahoo.com); Webmaster: Ari Pitoyo (aripitoyo@yahoo.co.id)

MANAGING EDITORS:
Ahmad Dwi Setyawan (unsjournals@gmail.com)

EDITORIAL BOARD (COMMUNICATING EDITORS):

- [Abd Fattah N. Abd Rabou](#), Islamic University of Gaza, Palestine
- [Agnieszka B. Najda](#), University of Life Sciences in Lublin, Lublin, Poland
- [Ajay Kumar Gautam](#), Abhilashi University Mandi, Himachal Pradesh, India
- [Annisa](#), Padjadjaran University, Sumedang, Indonesia
- [Alan J. LyMBERy](#), Murdoch University, Perth, Australia
- [Bambang Hero Saharjo](#), Institut Pertanian Bogor, Bogor, Indonesia
- [Daiane H. Nunes](#), State University of Londrina, Londrina, Brazil
- [Darlina Md. Naim](#), University Sains Malaysia, Penang, Malaysia
- [Ghulam Hassan Dar](#), Sher-e-Kashmir University of Agricultural Sciences and Technology of Kashmir, Srinagar, India
- [Hassan Pourbabaee](#), University of Guilan, Somehsara, Guilan, Iran
- [Joko Ridho Witono](#), Center for Plant Conservation-Bogor Botanical Gardens, Indonesian Institute of Sciences, Bogor, Indonesia
- [Kartika Dewi](#), Research Center for Biology, Indonesian Institute of

- [Maria Panitsa](#), University of Patras, Agrinio, Greece
- [Mochamad A. Soendjoto](#), Lambung Mangkurat University, Banjarbaru, Indonesia
- [Mohamed M.M. Najim](#), University of Kelaniya, Kelaniya, Sri Lanka
- [Mohib A. Shah](#), Nepean Telehealth Technology Centre, Sydney, Australia
- [Nurhasanah](#), Mulawarman University, Samarinda, Indonesia
- [Praptiwi](#), Research Center for Biology, Indonesian Institute of Sciences, Cibinong, Bogor, Indonesia
- [Rasool B.Tareen](#), University of Balochistan, Quetta, Pakistan
- [Seyed Aliakbar Hedayati](#), Gorgan University of Agricultural Sciences and Natural Resources, Iran
- [Seyed Mehdi Talebi](#), Arak University, Iran
- [Shahabuddin](#), Universitas Tadulako, Palu, Indonesia
- [Shahir Shamsir](#), Universiti Teknologi Malaysia, Skudai, Malaysia
- [Shri Kant Tripathi](#), Mizoram University, Aizawl, India
- [Sugeng Budiharta](#), Purwodadi Botanical Gardens, Indonesian Institute of Sciences, Pasuruan, Indonesia
- [Sugiyarto](#), Universitas Sebelas Maret, Surakarta, Central Java, Indonesia
- [Subash C. Santra](#), University of Kalyani, India
- [Taufiq Purna Nugraha](#), Research Center for Biology, Indonesian Institute of Sciences, Cibinong, Bogor, Indonesia
- [Yosep S. Mau](#), Nusa Cendana University, Kupang, Indonesia

ISSN 1412-033X | E-ISSN 2085-4722

PUBLISHER: Society for Indonesian Biodiversity

CO-PUBLISHER: Department of Biology, FMNS, Sebelas Maret University Surakarta

FIRST PUBLISHED: 2000

ADDRESS:

Sebelas Maret University
Jl. Ir. Sutami 36A Surakarta 57126. Tel. +62-271-7994097, Tel. & Fax.: +62-271-663375, email: editors@smujo.id

ONLINE: biodiversitas.mipa.uns.ac.id

[Download the Editorial Boards.](#)

Short Communication: The presence of extended-spectrum beta-lactamase (ESBL) producing *Escherichia coli* on layer chicken farms in Blitar Area, Indonesia

FRESHINTA JELLIA WIBISONO¹, BAMBANG SUMIARTO², TRI UNTARI³,

MUSTOFA HELMI EFFENDI^{4,5,*}, DIAN AYU PERMATASARI⁵, ADIANA MUTAMSARI WITANINGRUM⁵

¹Doctoral Program in Veterinary Science, Faculty of Veterinary Medicine, Universitas Gadjah Mada. Jl. Fauna No. 2, Karangmalang, Yogyakarta 55281, Indonesia

²Department of Veterinary Public Health, Faculty of Veterinary Medicine, Universitas Gadjah Mada. Jl. Fauna No. 2, Karangmalang, Yogyakarta 55281, Indonesia

³Department of Microbiology, Faculty of Veterinary Medicine, Universitas Gadjah Mada. Jl. Fauna No. 2, Karangmalang, Sleman 55281, Yogyakarta, Indonesia

⁴Halal Research Center, Universitas Airlangga. Jl. Raya Mulyorejo, Surabaya 60115, East Java, Indonesia. Tel./fax.: +62-31-5915551, *email: mheffendi@yahoo.com

⁵Department of Veterinary Public Health, Faculty of Veterinary Medicine, Universitas Airlangga. Jl. Raya Mulyorejo, Surabaya 60115, East Java, Indonesia

Manuscript received: 21 January 2020. Revision accepted: 19 May 2020.

Abstract. Wibisono FJ, Sumiarto B, Untari T, Effendi MH, Permatasari DA, Witaningrum AM. 2020. Short Communication: The presence of extended-spectrum beta-lactamase (ESBL) producing *Escherichia coli* on layer chicken farms in Blitar Area, Indonesia. *Biodiversitas* 21: 2667-2671. This study was aimed to determine the incidence of Extended-Spectrum Beta-Lactamase (ESBL) producing *Escherichia coli* on layer chicken in Blitar area. This was a cross-sectional study with a total of 205 cloacal swabs of layer chicken taken randomly. The sample was in isolation identification on MacConkey media and ESBL confirmation test produced by *Escherichia coli* was then carried out by the Double Disc Synergy Test (DDST) method and the VITEK® 2 Compact Automated System method. This study showed that 185 (90.24%) isolates of positive *Escherichia coli* from a total of 205 samples of cloacal swabs of the layer chicken. The incidence of ESBL-producing *Escherichia coli* in cloacal swabs on layer chicken with the Double Disc Synergy Test (DDST) method and the VITEK® 2 compact automatic method was 13 (7.03%). Results in this study indicated that layer chicken has potential as reservoir for spreading ESBL to public health and needs strict hygienic measures to prevent their transmission to humans.

Keywords: Cloacal swab, *Escherichia coli*, ESBL, DDST, layer chicken, VITEK®2

INTRODUCTION

Use of antibiotics in the animal sector reaches around 80%, mostly to increase growth in healthy animals (WHO 2017). Antibiotic residue cases in poultry products in Indonesia are found in several regions with different types of antibiotics and ranged between 8 to 70% (Etikaningrum and Iwantoro 2017). Bacterial resistance to poultry antibiotics is a major problem in the Indonesian poultry industry (Niasono et al. 2019). The speed of discovery of new types of antibiotics is slower than the speed of increased antibiotic resistance which causes concern that one day there will be no effective antibiotics available for the treatment of resistant bacterial infections (Handayani et al. 2017). This potential is an important vigilance point for public animals as well as human health.

Beta-lactam, tetracycline, and thylosine are antibiotics that are often used in some poultry farms (Mehdi et al. 2018; Niasono et al. 2019). There is a general farmers' perception that the use of antibiotics as a preventive measure at a low cost, has no side effects and it increases the high use of penicillin preparations on farms (Memish et al. 2004). Increased bacterial resistance to antibiotics in general

causes ineffective treatment of infectious diseases due to which infection continues and increases the risk of spreading infection to others (WHO 2017; Yusha'u and Umar 2016).

Infection involving the ESBL is an epidemic that worsens the infection of other diseases (Santos et al. 2013). The finding of an ESBL-producing bacterium of 14.84% in processed animal products is a matter of public health involving the environment as a source of spread of resistant bacteria (ESBL) for human and animal health (Niasono et al. 2019; Yusha'u and Umar 2016). The presence of ESBL-producing *Escherichia coli* in poultry in Indonesia has been reported in broiler feces in chicken slaughterhouses in Bogor with molecular detection (genotypic) examination using PCR of 6% (Lukman et al. 2016), and clinical microbiology (phenotypic) examination with an antibiotic sensitivity test method of 25% (Masruroh et al. 2016). In East Java, little is known about the ESBL cases from layer chicken farms and its distribution. Therefore, the aim of this study was to detect the ESBL producing *E. coli* isolated from cloacal swab of layer chicken samples in Blitar area in East Java, Indonesia and to understand the strains distribution.

MATERIALS AND METHODS

Research design, location, and sampling

This cross-sectional study was conducted between March and May 2019, using total sample of 205 cloacal swabs of layer chicken. Samples were taken randomly from layer chicken in Blitar District, East Java, Indonesia, and consisted of 5 sub-districts and 41 farms (Table 2). Samples were included in Amies Swab transport media and stored in a cooler box before being taken to the laboratory (Seni et al. 2016). Sample preparation and further examination were carried out as soon as possible after sampling.

Isolation and identification of *Escherichia coli*

The cloacal swab in the Viscosa (Deltalab, Spain) Amies Swab transport medium at cold temperatures were brought to the laboratory for the isolation of *E. coli* bacteria (Effendi 2018; Putra et al. 2019). Samples of cloacal swabs of layer chicken were cultured on selective MacConkey Agar media no. 3 (Oxoid, England) incubated at 35-37 °C for 20-24 hrs. The pure colony of *E. coli* was identified by the Gram staining test, then biochemical identification of bacteria was carried out by the IMVIC test (Indol-Motility, Methyl Red, Voges Proskauer, Citrate) and TSIA (Triple Sugar Iron Agar).

Double Disc Synergy Test (DDST) for ESBL confirmation test

ESBL producing *E. coli* can be confirmed using a confirmation test by Double Disc Synergy Test (DDST). This confirmation test was carried out to evaluate the presence of an inhibitory zone of ESBL activity with clavulanic acid. This conventional method was carried out using the Kirby-Bauer disk diffusion method on Mueller-Hinton agar (Merck, Germany). The DDST confirmation test used an antibiotic (Oxoid, England) disc Amoxicillin-clavulanate 30µg, Cefotaxim 30µg, Ceftazidime 30µg, and Aztreonam 30µg. The culture was incubated at temperatures of 35-37°C for 18-24 hrs (CLSI 2017; Effendi et al. 2019). Evaluation results after incubation showed the presence of inhibitory zones that appeared in the cup were measured according to the Clinical and Laboratory Standards Institute (CLSI) guidelines as shown in Table 1.

VITEK®2 compact method of antibiotic sensitivity test

Inoculated isolates were selected from a single colony. Gram-negative isolates used the VITEK® 2 GN card. The

isolates of this study used were pure *E. coli* isolates from cloacal swabs of layer chicken. The results were analyzed automatically by the system and interpreted as sensitive, intermediate, and resistant (Biomerieux 2017).

RESULTS AND DISCUSSION

Isolation and identification of *Escherichia coli*

The results of isolation and identification of 205 samples of cloacal swabs on layer chicken farms showed that 185 (90.24%) isolates were positive for *E. coli* (Table 2). Positive samples of *E. coli* on MacConkey Agar were identified with reddish-pink colonies (Figure 1), then confirmed by biochemical tests using IMVIC and TSIA. MacConkey media we used for rapid identification of enteric bacteria. The presence of crystal violet and bile salts in the MacConkey selective media in order to inhibit Gram-positive growth, so MacConkey media is used to grow Gram-negative bacteria (Anggraini et al. 2018; Estiningsih et al. 2016). The IMVIC test was used to distinguish *E. coli* in its biochemical activity with other coliform bacteria (Leboffe and Pierce 2011). IMVIC test showed a motile result, Indol positive red ring formed after Kovac's reagent was added, Methyl Red (MR) test was positively indicated by a red color change, Voges-Proskauer (VP) test was negative with no color change, Citrate negative test was confirmed with color the media remains green and no change (Figure 2). The TSIA test produced gas, the upright and sloping media were yellow and there was no H₂S at the bottom of the tube (Figure 2). The results of isolation and identification of positive *E. coli* isolates from this study were in accordance with the standard microbiological literature on morphology and biochemical tests of *E. coli* bacteria (Brooks et al. 2013).

Table 1. ESBL producing *Escherichia coli* on Recommendation disc CLSI (CLSI 2017)

Antibiotic disc		Inhibition zone on ESBL
Cefotaxime	CTX 30 µg	Inhibition Zone ≤ 27 mm
Ceftazidime	CAZ 30 µg	Inhibition Zone ≤ 22 mm
Cefpodoxime	PX 10 µg	Inhibition Zone ≤ 22 mm
Ceftriaxone	CRO 30 µg	Inhibition Zone ≤ 25 mm
Aztreonam	ATM 30 µg	Inhibition Zone ≤ 27 mm

Table 2. Data of ESBL producing *Escherichia coli* on this study

Location	Farms	Sample size	<i>Escherichia coli</i>		ESBL (DDST)		ESBL (VITEK)	
			Positive	Percentage	Positive	Percentage	Positive	Percentage
Ponggok	10	50	45	90%	1	2.22%	1	100%
Srengat	17	85	77	90.5%	8	10.39%	8	100%
Udanawu	6	30	27	90%	0	0	0	100%
Talun	4	20	17	85%	1	5.88%	1	100%
Kademangan	4	20	19	95%	3	15.79%	3	100%
Total in Blitar area	41	205	185	90.24%	13	7.03%	13	100%
				(185/205)		(13/185)		(13/13)

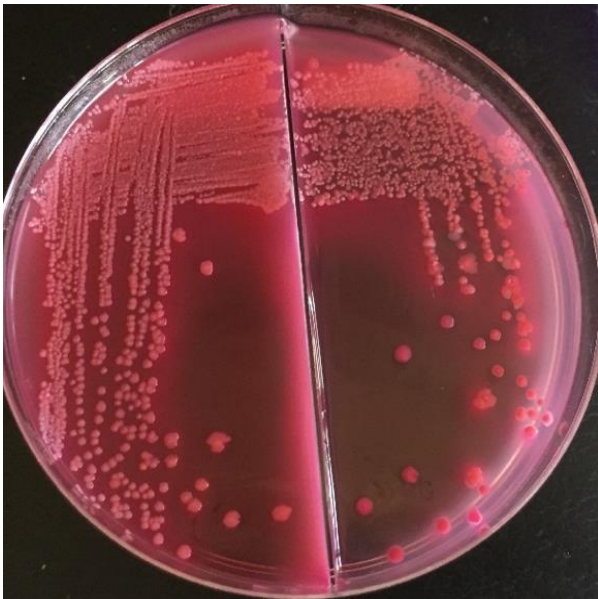


Figure 1. *Escherichia coli* on MacConkey Agar



Figure 2. Identification *Escherichia coli* by IMVIC and TSIA

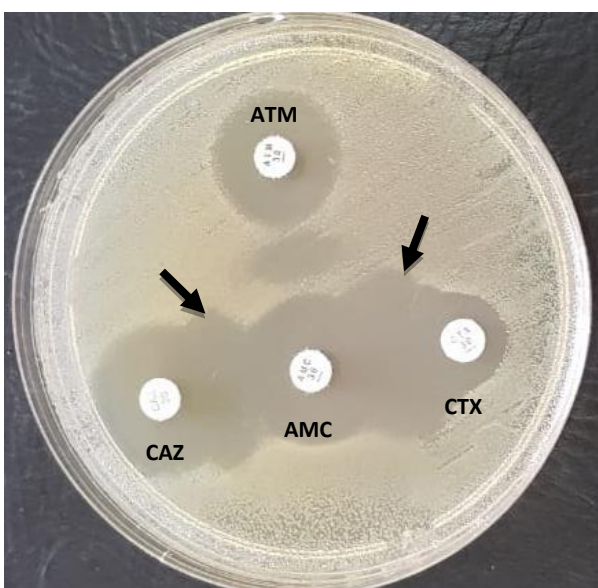


Figure 3. Confirmation ESBL producing *Escherichia coli* by Double Disc Synergy Test (DDST). Information: Cefotaxime (CTX); Ceftazidime (CAZ); Amoxicillin-clavulanate (AMC); Aztreonam (ATM); black arrow is synergy formed.

Double Disc Synergy Test (DDST) for ESBL confirmation test

The results of this study showed the incidence of ESBL producing *E. coli* in cloacal swabs in layer chicken with the Double Disc Synergy Test (DDST) method of 13 (7.03%) ESBL positive isolates (Table 2) and shown on Figure 3. The cefotaxime synergy with the combination of amoxicillin-clavulanate in the form of expansion of the barrier zone between the two disks showed that the bacteria were positive ESBL, this result was in accordance with Savira's statement ESBL. Positive results for ESBL-producing bacteria confirmed that there was an increase in the inhibition zone ≥ 5 mm between the diameter of the cephalosporin disk and the cephalosporin-clavulanate combination disk expressing positive ESBL germs (CLSI 2017; Savira 2014).

The VITEK®2 compact method of antibiotic sensitivity test

Positive isolate of ESBL-producing *E. coli* using the DDST method was then confirmed by the VITEK® compact 2 methods to identify and test antibiotic sensitivity to the third cephalosporin group. The results of the identification of the Vitek method showed 100% (13) positive isolates of *E. coli* and their sensitivity test showed 100% (13) ESBL producing isolates (Table 2). These results were consistent with the statement that the accuracy of VITEK® 2 compact automated system ranges from 97.8% (O'Hara 2005) to 98.02% (Duggal et al. 2012).

The results showed that the ESBL confirmation test with the DDST conventional method had the same incidence with the confirmation test using the VITEK® 2 compact method. The confirmation method of ESBL-producing *E. coli* in a conventional manner with the DDST method was more often used because it did not require analytical equipment at an expensive price and the cost of testing is relatively cheaper than the confirmation test using the VITEK® 2 compact method (Biomerieux 2017).

Discussion

In this study, ESBL-producing *E. coli* isolated from cloacal swab layer chicken samples from 41 layer chicken farms in Blitar area, Indonesia. Of the 41 layer chicken farms, almost of ESBL producing *E. coli* was detected in cloacal swab samples, which showed the possibility of the ESBL producer transmission route from food-producing animal farms (Gundogan and Avci 2013).

Escherichia coli as a commensal bacterium is commonly used as an indicator in surveillance and monitoring antibiotic resistance programs, because it is a gram-negative bacterium that is often found in animal feces and is associated with treatment in humans and often found conjugate plasmids that can move between enteric bacteria. *E. coli* as a reservoir of genes that have been resistant to antibiotics that can be transferred to other pathogenic bacteria (OIE 2015). The presence of commensal *E. coli* in the gut of livestock acts as a reservoir of resistant genes that can move horizontally to pathogenic *E. coli* and other bacteria in the food chain (Biutifasari 2018). This study was related with the incidence of ESBL producing *E. coli*

in accordance with its incidence in broiler chicken feces in Bogor by 6% (Lukman et al. 2016), but much smaller than the incidence of ESBL producing *E. coli* in India layer chicken which is around 42% (Brower et al. 2017). Infections involving ESBL become an outbreak that exacerbates the infection of other diseases (Santos et al. 2013).

The occurrence of antibiotic resistance in layer chickens with a fairly high prevalence rate causes large economic losses for farmers (Etikaningrum and Iwantoro 2017). Antibiotic resistance causes a high economic burden on the human and animal health sector. Rational therapy, government regulation, public education are important points in the strategy of handling resistance problems (Utami 2011; Putra et al. 2020). Approaches to deal with antibiotic resistance in the form of policies such as the development and dissemination of technical guidelines, but these guidelines are usually cut off from the context of animal husbandry without considering the complexity of the problems of day-to-day farming practices and are therefore ignored by farmers (Bellet 2018). ESBL-producing bacteria are increasingly reported to contaminate water and mud (Blaak et al. 2014; Laube et al. 2014). Farms that use contaminated water can be a possible route for ESBL-producing *E. coli* to enter the food chain (Reinthaler et al. 2010; Zheng et al. 2012). In the past, ESBL-producing *E. coli* was also isolated from river water and mud samples, which had the same resistance profile and ESBL gene as stool isolates in the same water. These results indicated the potential influence of chicken farming as a reservoir for spreading ESBL producing *E. coli* to the surrounding water environment (Laube et al. 2014; Overdevest et al. 2011).

In the production of food-producing animals, especially the chicken layer, high concentrations of microorganisms in the air often occur in the environment in cages (Shoabi et al. 2016). These microorganisms in such cages can survive in the form of aerosols for a long time in the air and transmitted via airflow (Gao et al. 2015). In this study, ESBL-producing *E. coli* was obtained from cloacal swab samples, the isolates from the samples showed high similarities, which showed *E. coli* transmission that produced in the environment at the backyard poultry farm (Kwoji et al. 2019). Previous research has shown the spread of ESBL-producing *E. coli* originating from surrounding area (Canton et al. 2008). The concentration of microorganisms is closely related to sanitation quality. Poor sanitation can benefit the spread of ESBL-producing *E. coli* (Saliu et al. 2012).

In conclusion, This study confirms the presence of ESBL products *E. coli* on layer chicken farms in the Blitar area. This isolate also showed high levels of antibiotic resistance to third-generation cephalosporins. These results are very important for public health awareness since layer chicken maintained close to the human population and can spread this resistant pathogen through the environment and farmers who are close to the cage for the maintenance of these layer chicken.

ACKNOWLEDGEMENTS

We would like to express our heartfelt thanks to Rector of Airlangga University for providing funding for this study by Hibah Mandat Universitas Airlangga. We also would like to thank the Animal Husbandry Services of Blitar District for the collaboration during the recruitment process and provided surveillance data. This study was supported by grants Hibah Mandat with number: 371/UN3.14/LT/2019 from the Universitas Airlangga.

REFERENCES

- Anggraini D, Hasanah U, Savira M, Andriani F, Irawan D, Prima R. 2018. Prevalence and susceptibility profile of ESBL-producing Enterobacteriaceae in Arifin Achmad General Hospital Pekanbaru. *Jurnal Kedokteran Brawijaya* 30: 47-52.
- Bellet C. 2018. Drug resistance and the dynamics of livestock farm practices. *J Rural Stud* 63: 57-64.
- Biomerieux. 2017. AST and Resistance Detection, Antibiotic Susceptibility Testing bioMérieux Industry website. www.biomerieux-diagnostics.com
- Biutifasari V. 2018. Extended spectrum beta-lactamase (ESBL). *Oceana Biomed J* 1: 1-6.
- Blaak H, Kruijff P De, Hamidjaja RA, Hoek AHAM Van, Maria A, Husman DR, Schets FM. 2014. Prevalence and characteristics of ESBL-producing *E. coli* in Dutch recreational waters influenced by wastewater treatment plants. *Vet Microbiol* 7: 448-459.
- Brooks GF, Carroll KC, Butel J, Morse SA, Mietzner T. 2013. *Medical Microbiology*, 26th ed. Mc Graw Hill, New York, USA.
- Brower CH, Mandal S, Hayer S, Sran M, Zehra A, Patel SJ, Kaur R, Chatterjee L, Mishra S, Das BR, Singh P, Singh R, Gill JPS, Laxminarayan R. 2017. The prevalence of extended-spectrum beta-lactamase-producing multidrug-resistant *Escherichia coli* in poultry chickens and variation according to farming practices in Punjab, India. *Environ Health Perspect* 125: 1-10.
- Canton R, Novais A, Valverde A, Machado E, Peixe L, Baquero F, Coque TM. 2008. Prevalence and spread of extended spectrum beta lactamase-producing Enterobacteriaceae in Europe. *Clin Microbiol Rev* 14: 144-153.
- CLSI. 2017. M100 Performance Standards for Antimicrobial, 27th ed. Clinical and Laboratory Standards Institute, USA.
- Duggal S, Gaiind R, Tandon N, Deb M, Chugh T Das. 2012. Comparison of an automated system with conventional identification and antimicrobial susceptibility testing. *Intl Scholarly Res Notices Microbiol* 2012: 107203. DOI: 10.5402/2012/107203.
- Effendi MH, Harijani N, Budiarto, Triningtya NP, Tyasningsih W, Plumeriastuti H. 2019. Prevalence of pathogenic *Escherichia coli* isolated from subclinical mastitis in East Java Province, Indonesia. *Indian Vet J* 96: 22-25.
- Effendi MH, Harijani N, Yanestria SM, Hastutie P. 2018. Identification of shiga toxin-producing *Escherichia coli* in raw milk samples from dairy cows in Surabaya, Indonesia. *Philippine J Vet Med* 55: 109-114.
- Estiningsih D, Puspitasari I, Nuryastuti T. 2016. Identification of multidrug resistant organisms infection in Neonatal Intensive Care Unit (UNIT). *Jurnal Manajemen dan Pelayanan Farmasi* 6: 243-248.
- Etikaningrum, Iwantoro S. 2017. Study of antibiotic residues in poultry products in Indonesia. *Jurnal Ilmu Produksi dan Teknologi Hasil Peternakan* 05: 29-33.
- Gao L, Tan Y, Zhang X, Hu J, Miao Z. 2015. Emissions of *Escherichia coli* carrying extended-spectrum β -lactamase resistance from pig farms to the surrounding environment. *Intl J Environ Res Public Health* 12: 4203-4213.
- Gundogan N, Avci E. 2013. Prevalence and antibiotic resistance of extended-spectrum beta-lactamase (ESBL) producing *Escherichia coli* and *Klebsiella* species isolated from foods of animal origin in Turkey. *Afr J Microbiol Res* 7: 4059-4064.
- Handayani RS, Siahaan S, Herman MJ. 2017. Antimicrobial resistance and implementation of control policies in hospitals in Indonesia. *Jurnal Penelitian dan Pengembangan Pelayanan Kesehatan* 1: 131-140.

- Kwoji ID, Musa JA, Daniel N, Mohzo DL, Bitrus AA. 2019. Extended-spectrum beta-lactamase-producing *Escherichia coli* in chickens from small-scale (backyard) poultry farms in Maiduguri, Nigeria. *Intl J One Health* 5: 26-30.
- Laube H, Friese A, Guerra B, Ro U. 2014. Transmission of ESBL/AmpC-producing *Escherichia coli* from broiler chicken farms to surrounding areas. *Vet J* 172: 519-527.
- Leboffe MJ, Pierce BE. 2011. *A Photographic Atlas for the Microbiology Laboratory*, 4th ed. Morton Publishing Company, New York, USA.
- Lukman DW, Sudarwanto MB, Purnawarman T, Latif H, Pisestyani H, Sukmawinata E, Akineden Ö. 2016. CTX-M-1 and CTX-M-55 producing *Escherichia coli* isolated from broiler feces in poultry slaughterhouse, Bogor, West Java Province. *Global Adv Res J Med Med Sci* 5: 287-291.
- Masruroh CA, Sudarwanto MB, Latif H. 2016. Incidence rate of *Escherichia coli* producing extended-spectrum beta-lactamase isolated from broiler faeces in Bogor City. *Jurnal Sain Veteriner* 34: 42-49.
- Mehdi Y, Létourneau-Montminy MP, Gaucher ML, Chorfi Y, Suresh G, Rouissi T, Brar SK, Côté C, Ramirez AA, Godbout S. 2018. Use of antibiotics in broiler production: Global impacts and alternatives. *Anim Nutr* 4: 170-178.
- Memish ZA, Balkhy HH, Shibl AM, Barrozo CP, Gray GC. 2004. *Streptococcus pneumoniae* in Saudi Arabia: Antibiotic resistance and serotypes of recent clinical isolates. *Intl J Antimicrob Agents* 23: 32-38.
- Niasono AB, Latif H, Purnawarman T. 2019. Antibiotic resistance to *Escherichia coli* bacteria isolated from broiler farms in Subang Regency, West Java. *Jurnal Veteriner* 20: 187-195.
- O'Hara CM. 2005. Manual and automated instrumentation for identification of Enterobacteriaceae and other aerobic Gram-Negative Bacilli. *Clin Microbiol Rev* 18: 147-162.
- OIE. 2015. OIE: Harmonisation of national antimicrobial resistance surveillance and monitoring programmes. Terrestrial Animal Health Code 1-6. www.oie.int
- Overdeest I, Willemsen I, Rijnsburger M, Eustace A, Xu L, Hawkey P, Heck M, Savelkoul P, Vandenbroucke-graals C, Zwaluw K Van Der, Huijsdens X, Kluytmans J. 2011. Genes of *Escherichia coli* in chicken meat and humans, the Netherlands. *Emerg Infect Dis* 17: 1216-1222.
- Putra AR, Effendi MH, Koedarto S, Suwarno S, Tyasningsih W, Estoepangestie AT. 2020. Detection of the extended-spectrum β -lactamase produced by *Escherichia coli* from dairy cows by using the Vitek-2 method in Tulungagung regency, Indonesia. *Iraqi J Vet Sci* 34: 203-207
- Putra ARS, Effendi MH, Koedarto S, Tyasningsih W. 2019. Molecular identification of extended-spectrum beta-lactamase (ESBL) producing *Escherichia coli* isolated from dairy cows in East Java Province, Indonesia. *Indian Vet J* 96: 26-30.
- Reinthal FF, Feierl G, Galler H, Haas D, Leitner E, Mascher F, Melkes A, Posch J, Winter I, Zarfel G, Marth E. 2010. ESBL-producing *E. coli* in Austrian sewage sludge. *Water Res* 44: 1981-1985.
- Saliu BK, Sule IO, Agbabiaka TO. 2012. Comparative study of bacteria in the digestive tracts of chicken reared as free rangers and those reared in poultry. *Biol Environ Sci J Tropics* 9: 26-39.
- Santos LL dos, Moura RA, Aguilar-Ramires P, Castro AP De, Lincopan N. 2013. Current status of extended-spectrum β -lactamase (ESBL)-producing Enterobacteriaceae in animals. In: Méndez-Vilas A (ed.). *Microbiology Book Series*. Formatex Research Center, Spain.
- Savira M. 2014. Validitas metode konvensional modifikasi terhadap metode konvensional dan chromidTM ESBL untuk deteksi bakteri-bakteri penghasil extended-spectrum beta-lactamases. *JIK* 2: 81-90.
- Seni J, Falgenhauer L, Simeo N, Mirambo MM, Imirzalioglu C, Matee M, Rweyemamu M, Chakraborty T, Mshana SE. 2016. Multiple ESBL-producing *Escherichia coli* sequence types carrying quinolone and aminoglycoside resistance genes circulating in companion and domestic farm animals in Mwanza, Tanzania, harbor commonly occurring plasmids. *Front Microbiol* 7: 1-8.
- Shoib M, Kamboh AA, Sajid A, Mughal GA, Leghari RA, Malhi KK, Bughio SUD, Ali A, Alam S, Khan S, Ali S. 2016. Prevalence of extended-spectrum beta-lactamase-producing Enterobacteriaceae in commercial broilers and backyard chickens. *Adv Anim Vet Sci* 4: 209-214.
- Utami ER. 2011. Antibiotics, resistance, and therapeutic rationality. *El Hayah* 1: 191-198.
- WHO. 2017. Stop using antibiotics in healthy animals to prevent the spread of antibiotic resistance. www.who.int
- Yusha'u M, Umar, MI. 2016. Phenotypic detection of extended-spectrum beta-lactamases in bacterial isolates from meat products sold within Kaduna Metropolis in Nigeria. *Proceeding of International Conference on Biodiversity Society for Indonesian Biodiversity*. Sebelas Maret University, Surakarta, 14-16 January 2016. [Indonesian]
- Zheng H, Zeng Z, Chen S, Liu Y, Yao Q, Deng Y, Chen X, Lv L, Zhuo C, Chen Z, Liu J. 2012. Prevalence and characterisation of CTX-M beta-lactamases among *Escherichia coli* isolates from healthy food animals in China. *Intl J Antimicrob Agents* 39: 305-310.