

Assessment of the withdrawal period for ractopamine hydrochloride in the goat and sheep

by Mochamad Lazuardi

Submission date: 08-Dec-2020 02:05PM (UTC+0800)

Submission ID: 1468412954

File name: Bukti_C05_Assesment_of_the_withdrawal.pdf (557.43K)

Word count: 4225

Character count: 20891

Assessment of the withdrawal period for ractopamine hydrochloride in the goat and sheep

M. Lazuardi¹, B. Hermanto² and T.I. Restiadi³

¹Laboratory of Veterinary Pharmacy Science, ³Departement of Reproduction, Faculty of Veterinary Medicine, ²Department of Pharmacology, Med ¹⁸Faculty, University of Airlangga, Surabaya, ¹³Indonesia
Email: ¹lazuardi@fkh.unair.ac.id, ²bambang-h@fk.unair.ac.id, ³tjukir@yahoo.com

(Received September 18, 2019; Accepted October 13, 2019; Available online July 25, 2020)

Abstract

Ractopamine hydrochloride often used as a bronchodilator, but its β -adrenergic agonist effects on un-striated muscle and its withdrawal time have not been assessed for Etawah goats and sheep. The aim of this study was to determine the safe time to slaughter goats and sheep post-treatment with ractopamine. Five clinically healthy adult goats and sheep (20 kg body weight) were treated with a single dose of ractopamine (1 mg, intravenously). Whole blood was sampled from the jugular vein at 120 min, 180 min and 300 min post-treatment. Ractopamine as a veterinary drug was analysed using HPLC at wavelength 225 nm. The concentrations at 120 min, 180 min and 300 min were $817.156 \pm 13.460 \mu\text{g.mL}^{-1}$, $554.468 \pm 50.157 \mu\text{g.mL}^{-1}$, and $294.588 \pm 52.845 \mu\text{g.mL}^{-1}$ in goats and $706.266 \pm 89.856 \mu\text{g.mL}^{-1}$, $579.194 \pm 45.664 \mu\text{g.mL}^{-1}$, and $209.36 \pm 54.797 \mu\text{g.mL}^{-1}$ in sheep, respectively. The withdrawal times in goats and sheep were $1141.710 \pm 255.85 \text{ h}$ and $989.741 \pm 167.633 \text{ h}$, respectively, no drug residues detected. The safe time to slaughter goats after administration of 1 mg of ractopamine was approximately 3 months and 5 days post-treatment at a safety factor of 2, which was later than the sheep at 2 months and 22 days by a safety factor of two.

Keywords: β -agonist, Clenbuterol, Vetranal, Residues

DOI: [10.33899/ijvs.2019.126114.1237](https://doi.org/10.33899/ijvs.2019.126114.1237), ©2020, College of Veterinary Medicine, University of Mosul.
This is an open access article under the CC BY 4.0 license (<http://creativecommons.org/licenses/by/4.0/>).

تقييم مدة طرح هيدروكلوريد الراكثوبامين في الماعز والأغنام

محمد لازاردي^١، بي هيرمانتو^٢ و تي أي ريسفتيادي^٣

^١مختبر علوم الصيدلة البيطرية، ^٣فرع علم التكاثر، كلية الطب البيطري، ^٢فرع الادوية، كلية الطب، جامعة ايرلانجا، سورابايا، إندونيسيا

الخلاصة

غالباً ما يستخدم هيدروكلوريد الراكثوبامين كموسع للقصبات الهوائية، ولكن آثاره المنبهة الأدرينالية على العضلات غير المخططة ووقت انسحابها لم يتم تقييمها في ماعز وأغنام إيتاواه. هدفت الدراسة الى تحديد الوقت الامن لذبح الماعز والأغنام بعد المعالجة بالراكثوبامين. تم علاج خمسة من الماعز والأغنام البالغة (٢٠ كجم من وزن الجسم) بجرعة واحدة من الراكثوبامين (١ ملغم في الوريد). تم أخذ عينات الدم من الوريد الوداجي عند ١٢٠ دقيقة و ١٨٠ دقيقة و ٣٠٠ دقيقة بعد العلاج. تم تحليل الراكثوبامين (كمستحضر بيطري) باستخدام جهاز HPLC على طول موجي ٢٢٥ نانومتر. كانت التراكيز عند ١٢٠ و ١٨٠ و ٣٠٠ دقيقة هي 817.156 ± 13.460 ، 554.468 ± 50.157 و 294.588 ± 52.845 في الماعز و 706.266 ± 89.856 ، 579.194 ± 45.664 و 209.36 ± 54.797 في الأغنام، على التوالي، و 1141.710 ± 255.85 و 989.741 ± 167.633 ساعة، على التوالي، كانت مدة طرح الدواء في الماعز والأغنام 1141.710 ± 255.85 و 989.741 ± 167.633 ساعة، على التوالي، أذ لم يلاحظ وجود بقايا للدواء. الوقت الامن لذبح الماعز بعد إعطاء ١ ملغم من الراكثوبامين هو ٣ أشهر و ٥ أيام بعد المعالجة باعتماد عامل أمان ٢، والذي كان متأخراً عن الأغنام الذي كان شهرين و ٢٢ يوماً باعتماد عامل أمان ٢.

Introduction

β -Agonists exhibit short-acting effects and long-acting effects and are frequently used to promote growth in livestock, but problems arise when the residues of such veterinary drugs have the potential to influence human health after being consumed in animal products (1-5). Evaluation of β -agonist as a veterinary drug is a new concept to implement the principle using medicines for veterinarian by motto: logic and responsibility. Logic in science has the following characteristics: a methodology, based on evidence and theory update. Responsibility means that a professional veterinarian has a moral responsibility to monitor the effects of administration of a drug that they have recommended (6).

In early 2018, a new concept for calculation of withdrawal time was developed on the basis of pharmacokinetic and bio-analysis data. This improved approach permits the calculation of withdrawal periods for veterinary drugs in any local animal, so it logical to use it to re-assess the current withdrawal period for ractopamine (7).

It was therefore decided to use this updated approach to re-assess the withdrawal period of ractopamine after treatment in goats and sheep, both of which are distributed across Asia, Europe, Australia and Africa, where they are used to produce human food, drugs and cosmetics. They are also closely related to livestock in several countries that are free from adverse drug responses (8). Specifically, we tested whether the withdrawal period of ractopamine, after a single dose was administered intravenously, differs between Indonesian (Etawah) goats and sheep (9). A second goal was to determine the length of time required for β -agonist residues to decrease to safe levels in animals that are to be slaughtered post-treatment.

Materials and methods

Experiment animals and animal ethic clearance

This research was conducted at Airlangga University in collaboration with the Indonesia Veterinary Pharmacy and Pharmacology Association under control by the Indonesia Medical Veterinary Association (IMVA) from August 2016 to August 2018, with rainy conditions and subtropical temperatures of approximately 22-25°C, and was conducted in compliance with the animal ethics clearance from University of Airlangga. Etawah goats and Javanese thin-tailed sheep, both local Indonesian breeds, were obtained from local farmers in Surabaya, Indonesia. The study was conducted in five of goats and five of sheep. The criteria of experimental animals were from the second generations of the native species of goats and sheep and were healthy adult males aged 1 year (live weight 18-22±1.41kg) raised under controlled veterinarian practices. Before treatment, all animals were adapted in animal housing for approximately 2 weeks.

Research design and experimental protocol

The experimental design consisted of a time series of measurements at 120 min, 180 min and 300 min post-treatment, followed by analysis of the elimination rate constant (K_{el}) and limit of quantification for method analysis (10).

Sample preparation

Certified reference material of Ractopamine-hydrochloride (Vetranal) at HPLC grades was purchased from Sigma-Aldrich in CAS-NO 90274-24-1 at level of purity 95.5%. Pharmaceutical-grade ractopamine-hydrochloride was produced by Shanghai Hancochem International Corporation. (www.hancochem.com). The drug was dissolved in aqua pro injection solution (w/v), and drops of 0.1% phosphoric acid for HPLC grade (Merck Catalog No.7664-38-2) were added until a solution formed. pH was adjusted 6.8-7 using with 0.1 M NaOH. After filtration through a 0.20 μ m filter, the solution of ractopamine was ready to use for injection (11). One milligram of the drug was intravenously injected into the jugular veins of goats and sheep. Jugular blood was sampled with a disposable syringe (5 mL) at 120 min, 180 min and 300 min post-treatment. All samples were placed in 10 mL heparinized tubes and centrifuged at 3500 rpm for 30 min. The plasma samples were placed in Nunc tubes (5 mL) and stored at -20°C until all samples were prepared.

Analysis of ractopamine

Analysis of the drug and drug residues in the liver was performed using Shimadzu HPLC LC-6AD pump with a PDA detector. Optimization and validation of the HPLC method were modified with the mobile phase consisted of acetonitrile: aqua pro chromatography reagent (30:70) containing 0.1% phosphoric acid at pH 3.8 (11-13). A reverse-phase ODS C₁₈ column was used, and the detector was set at 225 nm. Rheodyne® sample loops were configured to perform 2 μ L injections (14). Analysis was carried out using isocratic elution without internal standard. Analysis of the method parameters resulted in an optimal flow rate of 0.5 mL.min⁻¹ and an analysis time of 20 min. The method was validated for quality assurance at high impact levels according to the new research report (7,8,10).

Analysis of withdrawal time

The withdrawal time was calculated by using new method namely "Lazuardi Theory" base on K_{el} data for ractopamine to determine the elimination half-live ($T_{1/2\beta}$) and the limit of quantification (LOQ), as described by equation at below (7,9,14). The drug residues in goat and sheep in liver were monitored one-month post treatment.

Statistical analysis

The relationship between the ractopamine concentration and HPLC detector response and the differences in the kinetics profiles based on goat versus sheep data were assessed with SPSS 24.0 at 5% significance. The research hypothesis was tested at significance 5% with SPSS 24.0

Results

Validation method and concentration of ractopamine in matrix biology

The optimal UV-Vis wavelength for ractopamine detection was 225 nm, as indicated in Fig. 1. The HPLC retention time was 3.890 min for the ractopamine standard (Fig. 2) but 4.082 min for ractopamine extracted plasma by SPE (Fig. 3).

The peak area of ractopamine increased linearly with the concentration over the evaluated range of 0.242 to 1.601 $\mu\text{g.mL}^{-1}$, with a regression equation of $Y = -0.205 + 33925175 X$ and an R-squared value of 0.99. The coefficients of variation (CVs) for the intraday precision and accuracy at concentrations ranging from 0.18 $\mu\text{g.mL}^{-1}$ to 0.956 $\mu\text{g.mL}^{-1}$ were less than 8% (Table 1).

Regarding method sensitivity, the limit of detection (LOD) was $3.5 \times 10^{-6} \mu\text{g.mL}^{-1}$, and the LOQ was $1.06 \times 10^{-5} \mu\text{g.mL}^{-1}$. The precision and accuracy had CVs of less than 20%, and the percent recovery in artificial plasma was more than 80% (Table 2). The plasma concentrations of the drug in goats and sheep are detailed in Table 3.

Kinetic parameters of ractopamine

The exponent equation (K_{el}) and $T_{1/2\beta}$ determined on the basis of the data from goat and sheep between 5- 300 min post-treatment are presented in Table 4. These data show that the drug was eliminated more slowly in the goat than in the sheep ($P>0.05$).

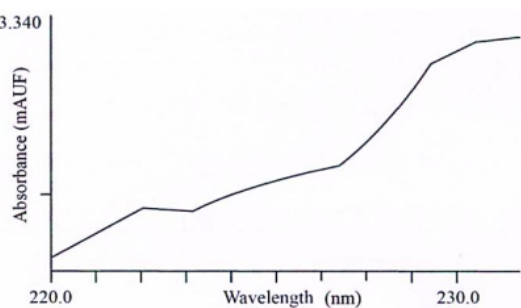


Figure 1: Spectrum of 440 $\mu\text{g.mL}^{-1}$ ractopamine dissolved in acetonitrile:water (30%:70%) containing 0.1% phosphoric acid (pH 3.8), showing the suitable wavelength of 225 nm with a peak of 0.0150 to 0.020 mAU.

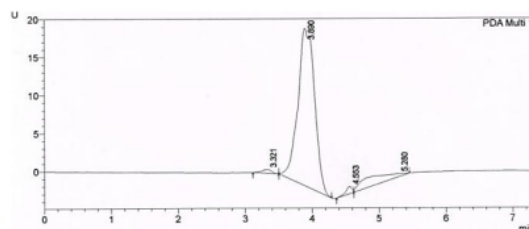


Figure 2: Chromatogram of 50 $\mu\text{g.mL}^{-1}$ ractopamine dissolved in the mobile phase (acetonitrile:water (70:30) containing 0.1% phosphoric acid, pH 3.8) detected at 225 nm, with a retention time of 3.890 min at 25°C.

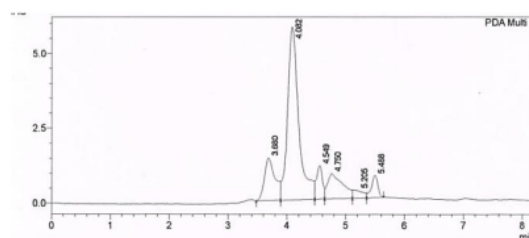


Figure 3: Chromatogram of 0.505 $\mu\text{g.mL}^{-1}$ ractopamine dissolved in the mobile phase (acetonitrile: water (70:30) containing 0.1% phosphoric acid, pH 3.8) at 225 nm, with a retention time of 4.082 min at 25°C.

Table 1: Intra-day precision and accuracy for the determination of ractopamine in the eluent mobile phase

Ractopamine concentration ($\mu\text{g.mL}^{-1}$)	Peak area
0.18	6106531
0.19	6116641
0.17	6006429
Average = 0.18	Average = 6076533.667
% CV = 5.555	% CV = 1.002
0.55	18658846
0.54	17957745
0.56	18758856
Average = 0.55	Average = 18458482.33
% CV = 1.818	% CV = 2.365
0.78	28453985
0.74	24413580
0.76	26433782
Average = 0.76	Average = 26433782.33
% CV = 2.631	% CV = 7.642
0.94	35469650
0.97	38499855
0.96	37488754
Means = 0.956	Average = 37152753
% CV = 1.597	% CV = 4.152

Table 2: Analysis precision, accuracy and percent recovery for ractopamine in artificial plasma ($\mu\text{g.mL}^{-1}$)

Drug concentration	Observed drug concentration	Peak area of analyte	Recovery (%)
0.25	0.200	6665032.444	80
	0.220	7610343.295	88
	0.240	8039522.042	96
Average \pm % CV	0.22 \pm 9.091	7438299.29 \pm 9,454	88 \pm 0.022
0.50	0.420	14266327.55	84
	0.480	16284083.8	96
	0.530	17980342.55	106
Average \pm % CV	0.477 \pm 11.53	16176917.97 \pm 11,494	95.33 \pm 11.55
1.00	1.010	34264426.55	101
	0.970	32907419.55	97
	0.980	33246671.30	98
Average \pm % CV	0.987 \pm 2.107	33472839.13 \pm 2.11	98.67 \pm 2.11

15
Table 3: Concentration of ractopamine in goat and sheep plasma

Animal (N)	Time (min)	Drug concentration in plasma samples ($\mu\text{g.mL}^{-1}$)				
		1	2	3	4	5
Goat	5	958.022	985.214	923.071	915.244	899.323
	120	814.540	840.340	805.540	814.320	811.040
	180	600.450	501.530	569.130	600.120	501.110
	300	250.120	351.050	270.230	352.420	249.120
Sheep	5	891.260	910.060	917.060	991.210	887.220
	120	815.150	767.270	718.420	614.230	616.260
	180	599.040	600.010	598.240	497.530	601.150
	300	151.250	249.140	250.430	248.520	147.460

Table 4: Exponential equation, elimination rate constant, elimination half-life, withdrawal time in goat sheep

Animal	Exponent equation	R ²	K _{el} (min ⁻¹)	T _{1/2β} (min)	Withdrawal time		
					Safety Factor 1 (hours)	Safety Factor 2 (days)	Safety Factor 3 (days)
Goat	1 Y=1117.9.e ^{-0.005X}	0.8887	0.005 ^a	138.600	927.882	77.323 ^c	115.985 ^c
	2 Y=1082.3.e ^{-0.004X}	0.9214	0.004 ^a	173.250	1159.853	96.654 ^c	144.982 ^c
	3 Y=11051.e ^{-0.004X}	0.8999	0.004 ^a	173.250	1159.853	96.654 ^c	144.982 ^c
	4 Y=1041.e ^{-0.003X}	0.9162	0.003 ^a	231.000	1546.47	128.872 ^c	193.309 ^e
	5 Y=1087.1.e ^{-0.005X}	0.8975	0.005 ^a	136.600	914.492	76.208 ^c	114.311 ^e
Mean \pm SD					1141.71 \pm 255.85	95.142 \pm 21.321	142.71 \pm 31.982
Sheep	1 Y=1257.6.e ^{-0.006X}	0.8052	0.006 ^b	115.500	773.235	64.436 ^d	96.654 ^f
	2 Y=1106.1.e ^{-0.004X}	0.8818	0.004 ^b	173.250	1159.852	96.654 ^d	144.981 ^f
	3 Y=1084.4.e ^{-0.004X}	0.9011	0.004 ^b	173.250	1159.852	96.654 ^d	144.981 ^f
	4 Y=1058.e ^{-0.005X}	0.9882	0.005 ^b	138.600	927.882	77.323 ^d	115.985 ^f
	5 Y=1123.e ^{-0.005X}	0.8902	0.005 ^b	138.600	927.882	77.323 ^d	115.985 ^f
Mean \pm SD					989.741 \pm 167.633	82.478 \pm 13.969	123.717 \pm 20.954

Superscript a vs. b in the same column by Independent-Sample t test indicates a significant not-difference at P>0.05.

Superscript c and e vs. d and f in the same column by Independent-Sample t test indicates a significant not-different at 0.05.

Discussion

To determine the ractopamine levels in plasma collected from healthy goats and sheep treated with this agent, we

initially utilized the HPLC assay described by other researchers without modification (9,15,16). However, we were unable to reproduce the reported assay so we developed a simpler assay using an isocratic mobile phase. Our protocol

was validated and the CV from linearity analysis was no more than 10%. For intra-day precision and accuracy, CVs were less than 20%. We needed to analyse plasma samples containing low concentrations of ractopamine, below 1.00 $\mu\text{g}\cdot\text{mL}^{-1}$, because such concentrations are expected in animals receiving a typical dose regimen but measurements at this level are known to be un certain, primary due to instrument error and human error during sample preparation. The LOQ we achieved ($1.06 \times 10^{-5} \mu\text{g}\cdot\text{mL}^{-1}$) was lower than the mean ractopamine concentration at 300 min post-treatment in goats and sheep. To produce an accurate, simple assay with high recoveries, sample components were separated on two adsorption columns: an HPLC column and SPE column (17,18). The recovery of ractopamine from plasma was 88-99% (19,20), consistent with reported recoveries of the half-life in these two species (21,22), and supporting suggestions that it is more extensively distributed in goat tissues than in sheep tissues (23,24). Therefore, in goats, ractopamine is not easily metabolized and must be processed more than 1.15 times as much as in sheep. Overall, it is clear that the risk of exposure to ractopamine residues is greater in goat tissues than in sheep tissues (4,25). The residues in liver and became undetectable after 95 h in goat and 82 h in the sheep, similar to delays reported for clenbuterol, a β_2 -agonist, in goat tissues (8,26). No ractopamine residues were detected in liver samples at a safety factor of 2 and 3, comparable to the factors reported by Ho and Colleagues the rat (27).

Ractopamine is known for its potential to be distributed into deep tissues in organs such the spleen, liver and kidney, increasing the risk of cancer (28). It is therefore important to acknowledge the risk of residues in animal slaughtered before the end of the withdrawal period. It is known that ractopamine residues do not melt at temperatures of 100-120 $^{\circ}\text{C}$ so imperfectly cooked meat will lead to the consumption of residues so persistent consumption is likely to increase the risk of cancer.

Conclusions

The withdrawal time of 1 mg of ractopamine administered intravenously is longer in goats than that in sheep. In goats, the withdrawal time is 3 months and 5 days post-treatment at a safety factor of two, and 4 months and 8 days post-treatment at a safety factor of three. In sheep, the withdrawal time is 2 months and 22 days post-treatment at a safety factor of two, and 4 months and 4 days post-treatment at a safety factor of three. It is clear that, more research is still needed to improve the detection of ractopamine residues in various tissues. A safety factor of more than 3 will be increase confidence that all residues had disappeared.

Acknowledgements

We thank to Directors of Tropical Diseases Research Center University of Airlangga for supporting the facilities of samples preparations and working by HPLC and spectrometry instruments. This work was financially supported by the Ministry of Research, Technology and Higher Education, Republic of Indonesia by scheme Hibah Kompetisi contract no. 018/SP2H/LT/DRPM/II/2016, February, 17th 2016. Thank you to Prof. Graeme B. Martin from University of Western Australia to correction English writing as a joint Adjunct Professor Program between Faculty of Veterinary Medicine University of Airlangga and University Western of Australia.

Conflict of interest

The authors declare that they have no conflict of interest.

References

1. Yang F, Yang YR, Wang L, Huang XH, Qiao G, Zeng ZL. Estimating marbofloxacin withdrawal time in broiler chickens using a population physiologically based pharmacokinetics model. *J Vet Pharmacol Ther.* 2014;37:579-588. DOI: 10.1111/jvp.12137.
2. Liu X, Grandy DK, Janowsky A. Ractopamine, a livestock feed additive, is a full agonist at trace amine-associated receptor 1. *J Pharmacol Exp Ther.* 2014;350:124-129. DOI: 10.1124/jpet.114.213116.
3. Jiang D, Cao B, Wang M, Yang H, Zhao K, Li J, Li M, Sun L, Deng A. Development of a highly sensitive and specific monoclonal antibody-based enzyme-linked immunosorbent assay for the detection of a new beta-agonist, phenylethanolamine A, in food samples. *J Sci Food Agric.* 2017;97:1001-1009. DOI: 10.1002/jsfa.7826.
4. Pleadin J, Vulic A, Persi N, Terzie S, Andrisic M, Žarkovic I, Šandor K, Perak E, Mihaljevic Z. Accumulation of ractopamine residues in hair and ocular tissues of animals during and after treatment. *J Anal Toxicol.* 2013;37:117-121. DOI: 10.1093/jat/bks092.
5. Regal P, Diaz-Bao M, Barreiro R, Vazquez BI, Cepeda A. Confirmation of beta-agonist residues in bovine retina and liver using HPLC-MS/MS and evaluation of matrix-dependent problems. *Food Addit Contam Part A Chem Anal Control Expo Risk Assess.* 2017;34:598-607. DOI: 10.1080/19440049.2016.1271144
6. Lazuardi M. The Generaly Part of Veterinary Pharmacy Science. 1st Ed. Jakarta, Indonesia: Ghalia Indonesia.;2016. 29-42 p.
7. Lazuardi M. The Special Part of Veterinary Pharmacy Science. 1st Ed. Surabaya-Indonesia: Airlangga University Press. 2019. 249-250 p.
8. Lazuardi M, Hermanto B. High-performance liquid chromatography ultraviolet-photodiode array detection method for aflatoxin B₁ in cattle feed supplements. *Vet World.* 2017;10:932-938. DOI: 10.14202/vetworld.2017.932-938
9. Lazuardi M, Hermanto B, Restiadi TI. Calculate of withdrawal times of clenbuterol in goats to obtain safe times of slaughter. *Vet World.* 2018;11:731-738. DOI: 10.14202/vetworld.2018.731-738
10. Li L, Tang C, Zhang J, Zhao Q, Zhang K. The potential of various living tissues for monitoring clenbuterol abuse in food-producing Chinese simmental beef cattle. *J Anal Toxicol.* 2016. 40:72-77. DOI: 10.1093/jat/bkv118
11. Chiesa L, Panseri S, Cannizzo FT, Biolatti B, Divari S, Benevelli R, Arioli F, Pavlovic R. Evaluation of nandrolone and ractopamine in the urine of veal calves: liquid chromatography-tandem mass spectrometry approach. *Drug Test Anal.* 2017;9:561-570. DOI: 10.1002/dta.2026

12. Lazuardi M, Restiadi TI, Hermanto B. Calculated withdrawal time by lazuardi equation method. *Proc Natl Indone Vet Pharm Pharmacol Assoc.* 2018;3(1):45-48.
13. Ding G, Li D, Qin J, Zhu J, Wang B, Geng Q, Guo M, Punyapitak D, Cao Y. Development and validation of a high-performance liquid chromatography method for determination of ractopamine residue in pork samples by solid phase extraction and pre-column derivatization. *Meat Sci.* 2015;106:55-60. DOI: 10.1016/j.meatsci.2015.03.016
14. Ying L, Huang L, Pan Y, Wu Q, Xie S, Yuan Z. Simultaneous determination of aditoprim and its three major metabolites in pigs, broilers and carp tissues, and its application in tissue distribution and depletion studies. *Food Addit Contam Part A Chem Anal Control Expo Risk Assess.* 2016;33:1299-1311. DOI:10.1080/19440049.2016.1200751.
15. Wu J, Liu X, Peng Y. Determination of ractopamine in pig hair using liquid chromatography with tandem mass spectrometric detection. *J Pharmacol Toxicol Methods.* 2014;69:211-216. DOI: 10.1016/j.vascn.2014.02.001
16. Pan S, Zhou L, Zhao Y, Chen X, Li X, Jin M. Development and validation of a sensitive method for simultaneous determination of eight beta (2)-agonists in pork by ultrasonic-assisted extraction and liquid chromatography/tandem mass spectrometry. *J Chromatogr Sci.* 2015;53:104-111. DOI: 10.1093/chromsci/bmu026
17. Du W, Zhao G, Fu Q, Sun M, Zhou H, Chang C. Combined microextraction by packed sorbent and high-performance liquid chromatography-ultraviolet detection for rapid analysis of ractopamine in porcine muscle and urine samples. *Food Chem.* 2014;145:789-795. DOI: 10.1016/j.foodchem.2013.08.094
18. Freire EF, Borges KB, Tanimoto H, Nogueira RT, Bertolini LC, de Gaitani CM. Monitoring of ractopamine concentration in the mixture of this feed additive with vitamin mineral complex and with swine feed by HPLC. *Food Addit Contam Part A Chem Anal Control Expo Risk Assess.* 2013;30:796-803. DOI: 10.1080/19440049.2013.780213.
19. Wang X, Guo T, Wang S, Yuan J, Zhao R. Simultaneous determination of 11 beta-agonists in human urine using high-performance liquid chromatography/tandem mass spectrometry with isotope dilution. *J Anal Toxicol.* 2015;39:213-218. DOI: 10.1093/jat/bku143.
20. Chan KW. Validation of a straightforward high-performance liquid chromatographic method formorphine quantitation. *Egypt J Forensic Sci.* 2017;7:1-6. DOI: 10.1186/s41935-017-0003-0.
21. Smith DJ, Shelver WL, Marx A. Detection of residues in urine and tissues of sheep treated with trace levels of dietary ractopamine HCl. *J Anim Sci.* 2016;94:5423-5433. DOI: 10.2527/jas.2016-0899
22. Zhao Z, Gu X, Su X, Li J, Li J, Dong Y, Yang Y, Yao T, Qin Y. Distribution and depletion of ractopamine in goat plasma, urine and various muscle tissues. *J Anal Toxicol.* 2017;41:60-64. DOI: 10.1093/jat/bkw102
23. Tang C, Zhang J, Li L, Zhao Q, Bu D. Ractopamine residues in urine, plasma and hair of cattle during and after treatment. *J Anal Toxicol* 2014;38:149-154. DOI: 10.1093/jat/bku006
24. Huang L, Shi J, Pan Y, Wang L, Chen D, Xie S, Liu Z, Yuan Z. Elimination and concentration correlations between edible tissues and biological fluids and hair of ractopamine in pigs and goats fed with ractopamine-medicated feed. *J Agric Food Chem.* 2016;64:2012-2020. DOI: 10.1021/acs.jafc.6b00456.
25. Pleadin J, Vulic A, Persi N, Terzic S, Andrisic M, Žarkovic I, Šandor K, Perak E. Comparison of ractopamine residue depletion from internal tissues. *Immunopharmacol Immunotoxicol.* 2013;35:88-92. DOI:10.3109/08923973.2012.702115
26. Edenburn BM, Kneeskern SG, Bohrer BM, Rounds W, Boler DD, Dilger AC, Felix TL. Effects of supplementing zinc or chromium to finishing steers fed ractopamine hydrochloride on growth performance, carcass characteristics, and meat quality. *J Anim Sci.* 2016;94(2):771-779. DOI:10.2527/jas.2015-9979
27. Ho JK, Huo TI, Lin LC, Tsai TH. Pharmacokinetics of ractopamine and its organ distribution in rats. *J Agric Food Chem.* 2014;62:9273-9278. DOI: 10.1021/jf5026168
28. Grandin T. On-farm conditions that compromise animal welfare that can be monitored at the slaughter plant. *Meat Sci.* 2017;132:52-58. DOI:10.1016/j.meatsci.2017.05.004

Assessment of the withdrawal period for ractopamine hydrochloride in the goat and sheep

ORIGINALITY REPORT

9%

SIMILARITY INDEX

7%

INTERNET SOURCES

5%

PUBLICATIONS

0%

STUDENT PAPERS

PRIMARY SOURCES

- | | | |
|---|--|----|
| 1 | Muhammad Kashif Maan, Adeel Sattar, Kun Mi, Muhammad Abu Bakr Shabbir et al. "Integration of PK/PD for dose optimization of aditoprim against Trueperella pyogenes causing endometritis in bovines", Microbial Pathogenesis, 2020
Publication | 1% |
| 2 | www.hindawi.com
Internet Source | 1% |
| 3 | link.springer.com
Internet Source | 1% |
| 4 | worldwidescience.org
Internet Source | 1% |
| 5 | discovery.ucl.ac.uk
Internet Source | 1% |
| 6 | www.isisn.org
Internet Source | 1% |
| 7 | www.ncbi.nlm.nih.gov | |

<1%

8

pubs.rsc.org

Internet Source

<1%

9

www.frontiersin.org

Internet Source

<1%

10

Whittle, Nigel, Helen Eldridge, John Bartley, and Gregory Organ. "Identification of the Polyphenols in Barley and Beer by HPLC/MS and HPLC/Electrochemical Detection", Journal of the Institute of Brewing, 1999.

Publication

<1%

11

Yuan Liu, Jian Wang, Yang Liu, Liting Yang, Xuran Zhu, Wei Wang, Jiaxiao Zhang, Dong Wei. "Expression of Codon Optimized α -2-Adrenergic Receptor in Sf9 Insect Cells for Multianalyte Detection of α -Agonist Residues in Pork", Journal of Microbiology and Biotechnology, 2019

Publication

<1%

12

www.tandfonline.com

Internet Source

<1%

13

www.macrothink.org

Internet Source

<1%

14

docstroika.ru

Internet Source

<1%

15

Lingli Huang, Jingfei Shi, Yuanhu Pan, Liye Wang, Dongmei Chen, Shuyu Xie, Zhenli Liu, Zonghui Yuan. "Elimination and Concentration Correlations between Edible Tissues and Biological Fluids and Hair of Ractopamine in Pigs and Goats Fed with Ractopamine-Medicated Feed", *Journal of Agricultural and Food Chemistry*, 2016

Publication

<1%

16

hdl.handle.net

Internet Source

<1%

17

Lin Xiong, Ya-Qin Gao, Wei-Hong Li, Tian-Feng Guo, Xiao-Lin Yang. "A method for multiple identification of four β 2-Agonists in goat muscle and beef muscle meats using LC-MS/MS based on deproteinization by adjusting pH and SPE for sample cleanup", *Food Science and Biotechnology*, 2015

Publication

<1%

18

Faried Effendy, Eto Wuryanto, Livia Felisia Marentina. "Penerapan Model Technology-to-Performance Chain pada Cyber Campus", *Jurnal Edukasi dan Penelitian Informatika (JEPIN)*, 2019

Publication

<1%

19

Stanley D. Furrow. "Kinetics and mechanism for the iodination of methylmalonic acid",

<1%

20

Kai-Chun Chang, Yu-Ting Chang, Chin-En Tsai.
"Determination of ractopamine and salbutamol
in pig hair by liquid chromatography tandem
mass spectrometry", Journal of Food and Drug
Analysis, 2018

Publication

<1%

Exclude quotes Off

Exclude matches Off

Exclude bibliography On

Assessment of the withdrawal period for ractopamine hydrochloride in the goat and sheep

GRADEMARK REPORT

FINAL GRADE

/0

GENERAL COMMENTS

Instructor

PAGE 1

PAGE 2

PAGE 3

PAGE 4

PAGE 5

PAGE 6
