

Association of high blood pressure with elevated oxidative stress, inflammatory marker and albuminuria in chronic kidney disease patients

by Mochammad Thaha

Submission date: 08-Feb-2021 11:34AM (UTC+0800)

Submission ID: 1504093338

File name: ry_marker_and_albuminuria_in_chronic_kidney_disease_patients.pdf (357.95K)

Word count: 4113

Character count: 22845

Association of High Blood Pressure with Elevated Oxidative Stress, Inflammatory Marker and Albuminuria in Chronic Kidney Disease Patients

Mochammad Thaha,¹ Ika N Kadariswantiningsih,² Maulana A Empitu³

Abstract

Background: Activation of renin-Angiotensin system in hypertension was believed to be major determinant in endothelial dysfunction, micro-inflammation, and reactive oxygen species generation. This study aimed to investigate the interaction of increased blood pressure with cardiovascular risk factors in chronic kidney disease (CKD).

Materials & methods: The study was an observational study with cross-sectional design that consecutively enrolled CKD patients in Universitas Airlangga Hospital and two other hospitals in Surabaya, Indonesia. The resting blood pressure and kidney functions of the participants were examined. Malondialdehyde (MDA) and total antioxidant capacity (TAC) was measured in serum and used as oxidative stress markers. Serum hs-C-reactive protein (CRP), lymphocyte-to-monocyte ratio and platelet-to-lymphocyte ratio were utilized as inflammatory markers, while urine albumin-to-creatinine ratio (ACR) was used as renal disease marker. The participants were grouped based on their systolic and diastolic blood pressure (SBP and DBP). The difference of marker levels between groups was tested using Mann-Whitney test. The correlation between SBP and DBP with inflammation, oxidative stress, and albuminuria was determined using Spearman's test.

Results: As many as 71 patients with CKD were enrolled in this study. As much as 37% of the participants had high SBP and 14% had high DBP. High SBP positively associated with MDA ($P<0.05$), hs-CRP ($P<0.05$), platelet-to-lymphocyte ratio ($P<0.05$), and ACR ($P<0.0001$) and negatively with lymphocyte-to-monocyte ratio ($P<0.05$) and TAC ($P<0.0001$). High DBP associated positively with ACR ($P<0.05$) and negatively with TAC ($P<0.05$).

Conclusions: High systolic or diastolic blood pressure was significantly associated with inflammation, oxidative stress and albuminuria. Optimal blood pressure control may be one of strategies to prevent inflammation and oxidative stress among CKD patients.

Keywords: Hypertension, inflammation, oxidative stress, albuminuria, chronic kidney disease.



DOI: <http://dx.doi.org/10.3329/jom.v20i1.38815>

Copyright: © 2019 Thaha M et al. This is an open access article published under the Creative Commons Attribution-NonCommercial-NoDerivatives 4.0 International License, which permits use, distribution and reproduction in any medium, provided the original work is properly cited, is not changed in any way and it is not used for commercial purposes.

Received: 29 November, 2017;

Accepted: 07 March, 2018

1. Department of Internal Medicine, Faculty of Medicine, Universitas Airlangga – Universitas Airlangga Hospital, Indonesia.
2. Department of Medical Microbiology, Faculty of Medicine, Universitas Airlangga, Indonesia.
3. Department of Pharmacology and Therapeutics, Faculty of Medicine, Universitas Airlangga, Indonesia.

Corresponding Author: Maulana A Empitu, Department of Pharmacology and Therapeutics, Faculty of Medicine, Universitas Airlangga, Indonesia. Email: maulana.antiyana@fk.unair.ac.id, Telephone: +628155949095.

Introduction:

Chronic kidney disease (CKD) and hypertension are both major global health problems. The current prevalence of high blood pressure is estimated around 18-31% globally, while CKD prevalence was 10% among South East Asian countries in 2013.¹ Both of the disorders frequently coincide as blood pressure typically increase with declined kidney function and associated with poor outcomes.² However, adverse cardiovascular events in CKD is the result of interactions between multiple risk factors rather than a contribution of single factor.²

Inflammation and oxidative stress are two of non-traditional cardiovascular risk factors in CKD. Oxidative stress which is resulted from the imbalance of oxidant and anti-oxidant system. In hypertensive non-CKD population, activation of the renin-angiotensin system has been proposed as a mediator of NAD(P)H oxidase activation and reactive oxygen species (ROS) production.³ Multiple studies have shown consistent association between inflammation and adverse cardiovascular event in patients with CKD.^{4,5} Hypertension acts as major determinant of endothelial dysfunction promoting inflammatory response in vascular damage.⁶ It has been shown in experimental model that hypertension promote expression of pro-inflammatory cytokines.⁶

On the other hands, high blood pressure is a mechanical stress to glomerulus which strongly associated with progression of CKD. The mechanical stressed that increases the intra-glomerular pressure initiates the cascade of endothelial damage, podocyte injury, and sclerosis.⁷ In epidemiological study, high Systolic Blood Pressure (SBP) is strong predictor of CKD progression to end-stage renal disease (ESRD) while high Diastolic Blood Pressure (DBP) was consistently associated with higher cardiovascular mortality in CKD.⁸

This study aimed to investigate the association of high SBP and DBP with oxidative stress, inflammation, and CKD progression. The progression of kidney disease can be well monitored using marker of kidney damage such as urinary albumin-to-creatinine ratio (ACR) as demonstrated previously. High-sensitivity C-reactive protein (hs-CRP) is an established inflammatory marker with strong association with cardiovascular mortality in CKD.⁵ In the other hand, higher platelet-to-lymphocyte ratio and lower Lymphocyte-to-monocyte ratio were novel predictive marker for higher cardiovascular mortality.^{9,10} This study compared the oxidative stress, inflammation, and kidney damage markers in CKD patients who had high SBP or DBP.

Materials & methods:

Study design and participants

This study is an observational clinical study with a cross-sectional design. We assumed that the α -value and the expected power for this study were 0.05 and 80% respectively. With the expected correlation coefficient for blood pressure with inflammation, oxidative stress, and albuminuria was 0.400, the minimum number of hypertensive patients is 47 based on previously described calculation.¹¹

The subjects of this study were patients who visit the internal medicine clinics or hemodialysis units in a government and a private hospital in Surabaya, Indonesia on May to August 2017. All of the subjects were agreed and sign informed consent for this study. The diagnosis of CKD was confirmed by NKF K-DOQI criteria based on CKD-EPI equation (eGFR < 60 mL/min/1.73 m², urine albumin > 300 mg/day,

Albumin to Creatinine Ratio > 250 mg/g for men and > 355 mg/g for women). The subjects who had overt infection, malignancy, and fever in the last three days were excluded from this study. The study was approved by Universitas Airlangga Hospital Ethic Committee (Approval number: 093/IGH/2017) and conducted by research team with Good Clinical Practice certification.

In this study, the study participants were divided based on its systolic blood pressure (SBP) and diastolic blood pressure (DBP) category. High systolic blood pressure (SBP) was defined as SBP greater than 139 mmHg, while high DBP was determined if DBP more than 89 mmHg. Serum malondialdehyde and total antioxidant capacity were used as oxidative stress marker, while hs-CRP, platelet-to-lymphocyte and lymphocyte-to-monocyte ratio as inflammation marker.

Blood pressure measurement

All BP measurement were performed trained examiner utilizing a standard stethoscope and sphygmomanometer. Resting blood pressure (BP) was measured in a situated position by auscultation utilizing the Riva-Rocci-Korotkoff technique following 5 minutes of rest. Systolic and diastolic BP were controlled by the beginning and vanishing of the Korotkoff sounds (K1 and K5), individually. Proper cuff sizes were chosen by the upper right arm boundary by alluding to procedural guidelines. Three BP readings were taken at 2-minute interims. The least measurement result was utilized in the analysis. The participants of this study were grouped based on their SBP and DBP based on the criteria of hypertension stated in the American College of Cardiology's 2017 Guideline for High Blood Pressure in Adults. High SBP was defined as SBP > 139 mmHg and high DBP means DBP > 89 mmHg.¹²

Laboratory examination

The laboratory test measured in this study consisted of leucocyte differential count from peripheral blood cell, serum Malondialdehyde, Total Antioxidant Capacity, and hs-CRP. Serum MDA was measured in blood serum and process by HPLC method using Agilent 1100. The serum TAC measured in blood serum and process by Colorimetry method using Advia 1800. Serum Hs-CRP measured in blood serum and process using particle enhanced turbidimetry (Roche Diagnostoc, CA, USA). The urine level of albumin and creatinine were measured with a Hitachi 7600 using a turbidimetric immunoassay and an enzymatic method, respectively.

Statistical Analysis

All quantitative data were subject to normality test using Saphiro-Wilk method. Normally distributed values were described as mean and standard deviation (SD) and not normally distributed values were stated as median (interquartile range). Difference of oxidative stress marker level, inflammatory marker, and urine Albumin-to-Creatinine

ratio between normal and high BP within DBP and SBP groups were calculated using Mann-Whitney test. Difference of marker levels between all groups was tested using Kruskal-Wallis test. Interaction between blood pressure subgroups with oxidative stress marker level, inflammatory marker, and urine Albumin-to-Creatinine ratio were assessed using Spearman test. All comparison test utilized in this study used two-tailed 95% Confidence Interval. Significant difference was defined if the p-value<0.05. Data analysis is supported by XLSTAT version 2016.02.28451.

Results:

Characteristic of study participants

Seventy-one patients were evaluated in this study (median age 59 y.o., 41 male). The baseline characteristics of the study participants were described in Table 1. Twenty-six patients (30 %) were on hemodialysis. The median of eGFR was 20 ml/minute/1.73 m² (3 – 39). As much as 73% of the study participant had type 2 DM, 87% had hypertension and 41% had congestive heart failure.

Comparison of Oxidative Stress Marker Level between SBP and DBP category

This study divided participants based on its SBP and DBP category, then compared the level of oxidative stress marker. Serum MDA and TAC were used to describe the states of oxidative stress. The MDA level is higher in high SBP (2.9 ± 0.6 mmol/L) compared to normal SBP group (2.4 IQR 2.2-2.9), but there was no different between the high DBP (3.0 ± 0.6 mmol/L) and the normal DBP groups (2.5 IQR 2.2- 3.1 mmol/L) (Fig 1a). Serum TAC were lower in high SBP (2.3 ± 0.7 mmol/L) compared to normal SBP (2.95 ± 0.7 mmol/L), and

lower in high DBP (2.3 ± 0.7 mmol/L) compared to normal DBP (2.8 ± 0.6 mmol/L) groups (Fig 1b).

Table I: Characteristics of Study Participants

Characteristic	All participant(n=71)
Age (years)	59 (53-63)
Sex ratio (M/F)	41/30
Kidney Function	
eGFR (ml/minute/1.73 m ²)	20 (3 – 39)
Urine ACR	408 (19 – 2174)
Serum Creatinine (mg/dL)	2.9 (1.7 – 12.7)
Serum Cystatin-C (mg/L)	2.8 (1.7 – 6.7)
HD, n (%)	26 (37)
Cardiovascular Disease and Risk Factors	
Type 2 Diabetes, n (%)	54 (76)
Hypertension, n (%)	62 (87)
High SBP, n (%)	26 (37)
High DBP, n (%)	10 (14)
Chronic heart failure, n (%)	29 (41)

Table II: Spearman's Correlation of Oxidative Stress, Inflammatory Marker, and Urine ACR between groups, we tested their association with high SBP and DBP

	High SBP		High DBP	
	r	P	r	P
Serum MDA	0.299	0.012	-	ns
Serum TAC	0.504	<0.0001	0.277	0.020
Hs-CRP	0.253	0.034	-	ns
Platelet-to-lymphocyte ratio	0.272	0.022	-	ns
Lymphocyte-to-monocyte ratio	-0.235	0.048	-	ns
Urine ACR	0.437	<0.0001	0.247	0.038

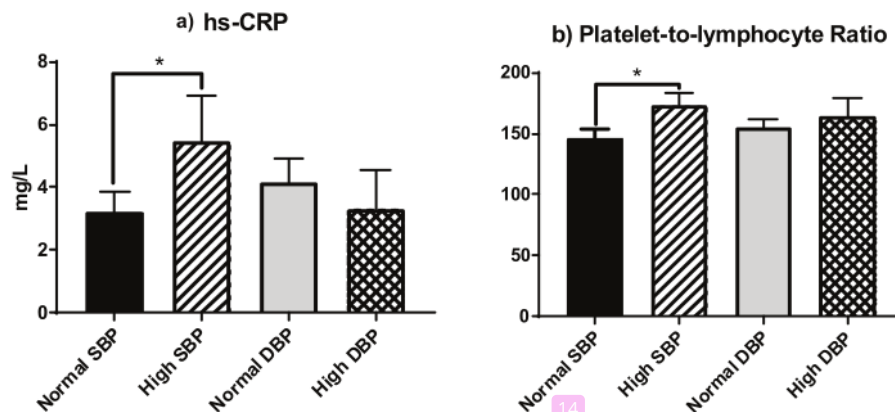


Figure 1: Oxidative stress marker level among study participants. a) Serum MDA level in normal and high SBP as well as DBP; b) Serum MDA level in normal and high SBP as well as DBP. * P<0.05; ** P<0.01; and # P<0.0001

Comparison of Inflammatory Markers Level between SBP and DBP category

This study also compared the level of inflammation among the study participants. Hs-CRP, platelet-to-lymphocyte and lymphocyte-to-monocyte ratio were used to describe the inflammation in CKD patients. Hs-CRP level was higher in high SBP (2.4 IQR 1.5 - 5.9 mg/L) compared to normal SBP groups (1.5 IQR 0.9 - 3.5 mg/L) (Fig. 2a). Platelet-to-Lymphocyte ratio was greater in high SBP (173.5 ± 52.7) compared to normal SBP (144.2 IQR 100.3 - 178) groups (Fig. 2b). Lymphocyte-to-monocyte ratio was lower in high SBP (3.7 ± 1.8) compared to normal SBP groups (4.5 ± 1.5) (Fig. 2c).

Comparison of Urine Albumin-to-Creatinine Ratio between SBP and DBP category

To assess the degree of kidney damage, the urine ACR were measured. The Urine ACR were different among the four subgroups ($P < 0.001$). Urine ACR was higher in high SBP (1789 IQR 587 - 3646) compared to the normal SBP groups (164 IQR 6 - 990). The urine ACR was also higher in high DBP ($2174 \pm 917 - 3600$) compared to normal DBP groups ($237 \pm 10 - 1789$) (Fig. 3).

Association between High SBP and DBP with Oxidative Stress, Inflammatory Marker, and Urine Albumin Excretion

After comparing the oxidative stress, inflammatory marker, and urine ACR between groups, this study tested the

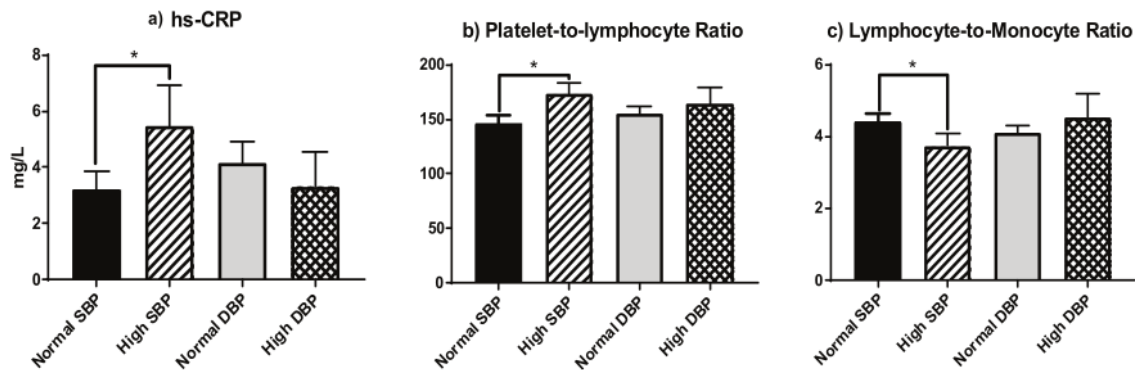


Figure 2: Inflammatory marker level among study participants. a) Serum hs-CRP level; b) Platelet-to-lymphocyte ratio level; and c) Lymphocyte-to-monocyte ratio in normal and high SBP as well as DBP group. * $P < 0.05$

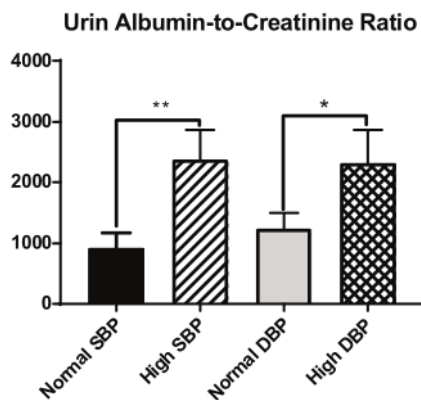


Figure 3. Urine Albumin-to-Creatinine ratio among study participants. * $P < 0.05$; ** $P < 0.001$

association of those markers with high SBP and DBP. High SBP was associated with serum MDA, TAC, Hs-CRP, Platelet-to-Lymphocyte ratio, Lymphocyte-to-Monocyte ratio and Urine ACR (Table 2). High DBP was only associated serum TAC and Urine ACR.

Discussion:

Our study showed that both high SBP and DBP associated with some of cardiovascular risk factors in CKD including oxidative stress, inflammation and albuminuria. Participants with high SBP demonstrated increased level of oxidative stress marker and lower level of total antioxidant capacity. Our previous study also found that pro-oxidant state and genetic predisposition factors existed in individual with CKD.¹³ This study result reassured the previous finding which revealed higher MDA level in hypertensive patients.⁴ Malondialdehyde is a marker of lipid peroxidation that increase along with reactive oxygen species (ROS) activity.

In addition of have higher oxidative stress marker, high SBP group exhibited a lower TAC level. This finding may explain the marked increase in MDA was due to the failure of antioxidant defense, indicated by lower TAC level. Other study by Xu *et al*¹⁴ also revealed that hypertensive CKD patients had increase level of MDA and lower level of antioxidant such as Superoxide dismutase and Glutathione Peroxidase.

Besides having pro-oxidant states, our study showed an association of high SBP with high hs-CRP. Chronic Renal Insufficiency Cohort (CRIC) study demonstrated that increased inflammatory markers were associated with albuminuria and negatively correlated with eGFR.¹⁵ In a multicenter international kidney disease register, hs-CRP predicted all-cause mortality of hemodialysis patients with precision better than leukocyte counts and ferritin.¹⁶ Increased plasma hs-CRP was strongly associated with increased body fat, arterial stiffness and cardiovascular mortality both in population with and without CKD.^{17,18} In experimental model, it has been demonstrated that increased blood pressure promote pro-inflammatory cytokines and endothelial damages.¹⁹

The rising level of hs-CRP in our study was supported by the finding of increased platelet-to-lymphocyte and lower lymphocyte-to-monocyte ratio in participants with high SBP. Turkmen *et al*²⁰ has previously showed that platelet-to-lymphocyte ratio is a reliable marker of inflammation in ESRD with better predictive value compared to neutrophil-to-lymphocyte ratio. In non-CKD population, platelet-to-lymphocyte ratio demonstrated predictive ability for all-cause mortality after non-ST elevation myocardial infarction.²¹

In the other hand, pro-inflammatory state in CKD is not only a factor that contribute to the progression towards ESRD and mortality, but also occurs as a consequence of decreased renal function and increased cytokines production. Decreased GFR may cause lower clearance of circulating pro-inflammatory cytokines, thus increased the cytokines plasma level.^{22,23}

Other factors that increased the pro-inflammatory cytokines production in CKD such as uremia, metabolic acidosis, uncontrolled blood pressure, frequent blood access infection, and thrombosed IV fistula might also contribute to the inflammation.²² Uremic state produces oxidative and carbonyl stress which are pro-inflammatory.²⁴ The uremic states also contributed to intestinal dysbiosis that was suggested to trigger translocation of gut bacteria into systemic circulation and activate systemic inflammation.^{25,26} As the result, inflammation markers such as IL-6, TNF-alpha, and hs-CRP are increased in CKD patients.¹⁵

There has been an ample of experimental and clinical evidence that showed hypertension as progression factors of CKD. In this study, the urine ACR was evaluated in patients with increased SBP or DBP. In CKD patients, albuminuria is strongly associated with arterial stiffness and currently used as a progression marker of kidney damage.²⁷ Our result showed that both groups of participants with high SBP or DBP had higher urine ACR compared to their normal counterparts respectively. The previous study also revealed similar finding that normotensive individuals are less likely to develop albuminuria.²⁸ In the context of outcomes and mortality prediction, albuminuria was comparable to hs-CRP.¹⁶ Considering the study result that showed the interaction of increased blood pressure with oxidative stress and inflammation, implied that a proper blood pressure control in CKD patients may delay CKD progression and reduce cardiovascular risk. Our previous study showed that an intervention to reduce oxidative stress decreased the surrogate marker level of endothelial dysfunction.²⁹

Conclusions:

This study result should be viewed with its limitation. Considering the cross sectional design of this study, the association of increased SBP and DBP with other cardiovascular risk factors did not infer any causality relationship. The weak and moderate association of SBP and DBP with inflammation and stress oxidative also might result from the small size of study participants.

In overall, this study is able some degree of association between high SBP and DBP with several non-traditional cardiovascular risk in CKD. However, further investigation with proper design is highly needed to evaluate the long term outcome and cost effectiveness of managing blood pressure while directly targeting inflammation and stress oxidative in CKD patients.

Conflict of interest: None.

References:

1. Jha V, Garcia-Garcia G, Iseki K, Li Z, Naicker S, Plattner B, et al. Chronic kidney disease: global dimension and perspectives. *Lancet*. 2013;382(9888):260–72. [https://doi.org/10.1016/S0140-6736\(13\)60687-X](https://doi.org/10.1016/S0140-6736(13)60687-X)
2. GoAS, Chertow GM, Fan D, McCulloch CE, Hsu C. Chronic kidney disease and the risks of death, cardiovascular events, and hospitalization. *N Engl J Med*. 2004;351(13):1296–305. <https://doi.org/10.1056/NEJMoa041031>
3. Paravicini TM, Touyz RM. NADPH oxidases, reactive oxygen species, and hypertension: clinical implications and therapeutic possibilities. *Diabetes Care*. 2008;31(Supplement 2):S170–80. <https://doi.org/10.2337/dc08-s247>
4. Ahmad A, Singhal U, Hossain MM, Islam N, Rizvi I. The role of the endogenous antioxidant enzymes and

- malondialdehyde in essential hypertension. *J Clin diagnostic Res JCDR*. 2013;7(6):987. <https://doi.org/10.7860/JCDR/2013/5829.3091>
5. Jalal D, Chonchol M, Etgen T, Sander D. C-reactive protein as a predictor of cardiovascular events in elderly patients with chronic kidney disease. *J Nephrol*. 2012;25(5):719. <https://doi.org/10.5301/jn.5000047>
 6. Grundy SM. Inflammation, hypertension, and the metabolic syndrome. *Jama*. 2003;290(22):3000–2. <https://doi.org/10.1001/jama.290.22.3000>
 7. Empitu MA, Kadariswantiningsih IN, Aizawa M, Asanuma K. MAGI-2 and scaffold proteins in glomerulopathy. *Am J Physiol Physiol*. 2018;
 8. Weiner DE, Tighiouart H, Amin MG, Stark PC, MacLeod B, Griffith JL, et al. Chronic kidney disease as a risk factor for cardiovascular disease and all-cause mortality: a pooled analysis of community-based studies. *J Am Soc Nephrol*. 2004;15(5):1307–15. <https://doi.org/10.1097/01.ASN.0000123691.46138.E2>
 9. Silva N, Bettencourt P, Guimarães JT. The lymphocyte-to-monocyte ratio: An added value for death prediction in heart failure. *Nutr Metab Cardiovasc Dis*. 2015;25(11):1033–40. <https://doi.org/10.1016/j.numecd.2015.07.004>
 10. Durmus E, Kivrak T, Gerin F, Sunbul M, Sari I, Erdogan O. Neutrophil-to-lymphocyte ratio and platelet-to-lymphocyte ratio are predictors of heart failure. *Arq Bras Cardiol*. 2015;105(6):606–13. <https://doi.org/10.5935/abc.20150126>
 11. Hulley SB, Cummings SR, Browner WS, Grady DG, Newman TB. *Designing clinical research*. Lippincott Williams & Wilkins; 2011.
 12. Whelton PK, Carey RM, Aronow WS, Casey DE, Collins KJ, Dennison Himmelfarb C, et al. 2017 ACC/AHA/AAPA/ABC/ACPM/AGS/APhA/ASH/ASPC/NMA/PCNA Guideline for the Prevention, Detection, Evaluation, and Management of High Blood Pressure in Adults. *J Am Coll Cardiol [Internet]*. 2018 May 15;71(19):e127 LP-e248. Available from: <http://www.onlinejacc.org/content/71/19/e127.abstract>
 13. Thaha M, Yusuf M, Empitu MA, Bakarman A, Tomino Y. Distribution of dimethylarginine-dimethylaminohydrolase-II (DDAH2) gene polymorphism in hemodialysis patients. *Acta Med Indones*. 2013;45(2):83–8.
 14. Xu G, Luo K, Liu H, Huang T, Fang X, Tu W. The progress of inflammation and oxidative stress in patients with chronic kidney disease. *Ren Fail*. 2015;37(1):45–9. <https://doi.org/10.3109/0886022X.2014.964141>
 15. Goldstein SL, Leung JC, Silverstein DM. Pro-and anti-inflammatory cytokines in chronic pediatric dialysis patients: effect of aspirin. *Clin J Am Soc Nephrol*. 2006;1(5):979–86. <https://doi.org/10.2215/CJN.022911205>
 16. Bazeley J, Bieber B, Li Y, Morgenstern H, de Sequera P, Combe C, et al. C-reactive protein and prediction of 1-year mortality in prevalent hemodialysis patients. *Clin J Am Soc Nephrol*. 2011;CJN-00710111. <https://doi.org/10.2215/CJN.00710111>
 17. Thaha M, Empitu MA, Kadariswantiningsih IN, Nugroho CW, Hasanatuludhhiyah N, Rasyid H, et al. Anthropometry-based Body Fat Percentage Predicts High hs-CRP in Chronic Kidney Disease Patients. *Indones Biomed J*. 2018;10(2):184–91. <https://doi.org/10.18585/inabj.v10i2.397>
 18. Tsai S-S, Lin Y-S, Lin C-P, Hwang J-S, Wu L-S, Chu P-H. Metabolic syndrome-associated risk factors and high-sensitivity C-reactive protein independently predict arterial stiffness in 9903 subjects with and without chronic kidney disease. *Medicine (Baltimore)*. 2015;94(36). <https://doi.org/10.1097/MD.0000000000001419>
 19. Grundy SM. Metabolic syndrome update. *Trends Cardiovasc Med*. 2016;26(4):364–73. <https://doi.org/10.1016/j.tcm.2015.10.004>
 20. Turkmen K, Erdur FM, Ozcicek F, Ozcicek A, Akbas EM, Ozbicer A, et al. Platelet to lymphocyte ratio better predicts inflammation than neutrophil to lymphocyte ratio in end stage renal disease patients. *Hemodial Int*. 2013;17(3):391–6. <https://doi.org/10.1111/hdi.12040>
 21. Azab B, Shah N, Akerman M, McGinn JT. Value of platelet/lymphocyte ratio as a predictor of all-cause mortality after non-ST-elevation myocardial infarction. *J Thromb Thrombolysis*. 2012;34(3):326–34. <https://doi.org/10.1007/s11239-012-0718-6>
 22. Akchurin M, Kaskel F. Update on inflammation in chronic kidney disease. *Blood Purif*. 2015;39(1–3):84–92. <https://doi.org/10.1159/000368940>
 23. Andres-Hernando A, Dursun B, Altmann C, Ahuja N, He Z, Bhargava R, et al. Cytokine production increases and cytokine clearance decreases in mice with bilateral nephrectomy. *Nephrol Dial Transplant*. 2012;27(12):4339–47. <https://doi.org/10.1093/ndt/gfs256>
 24. Avelas PR, Criminácio CR, Gonçalves S, Bignelli AT, Claro LM, Siqueira SS, et al. Association between biomarkers of carbonyl stress with increased systemic inflammatory response in different stages of chronic kidney disease and after renal transplantation. *Nephron Clin Pract*. 2010;116(4):c294–9. <https://doi.org/10.1159/000318792>
 25. Anders H-J, Andersen K, Stecher B. The intestinal microbiota, a leaky gut, and abnormal immunity in kidney disease. *Kidney Int*. 2013;83(6):1010–6. <https://doi.org/10.1038/ki.2012.440>
 26. Ramezani A, Raj DS. The gut microbiome, kidney disease, and targeted interventions. *J Am Soc Nephrol*. 2014;25(4):657–70. <https://doi.org/10.1681/ASN.2013080905>

27. Kalaitzidis RG, Karasavvidou DP, Tatsioni A, Pappas K, Katatsis G, Lontos A, et al. Albuminuria as a marker of arterial stiffness in chronic kidney disease patients. *World J Nephrol.* 2015;4(3):406. <https://doi.org/10.5527/wjn.v4.i3.406>
28. Cotter J, Oliveira P, Cunha P, Polónia J. Risk Factors for Development of Microalbuminuria in Diabetic and Nondiabetic Normoalbuminuric Hypertensives with High or Very High Cardiovascular Risk—A Twelve-Month Follow-Up Study. *Nephron Clin Pract.* 2009;113(1):c8–15. <https://doi.org/10.1159/000228070>
29. Thaha M, Pranawa W, Yogiantoro M, Tomino Y. Intravenous N-acetylcysteine during hemodialysis reduces asymmetric dimethylarginine level in end-stage renal disease patients. *Clin Nephrol.* 2008;69(1):24–32. <https://doi.org/10.5414/CNP69024>

Association of high blood pressure with elevated oxidative stress, inflammatory marker and albuminuria in chronic kidney disease patients

ORIGINALITY REPORT

18%

SIMILARITY INDEX

12%

INTERNET SOURCES

16%

PUBLICATIONS

0%

STUDENT PAPERS

PRIMARY SOURCES

- 1** Anna Raguzzini, Giovanna Poce, Sara Consalvi, Elisabetta Toti, Francesca Palmacci, Mariangela Biava, Ilaria Peluso. "Chocolate Consumers and Lymphocyte-to-Monocyte Ratio: A Working Hypothesis from a Preliminary Report of a Pilot Study in Celiac Subjects", *Antioxidants*, 2019
Publication 1%
- 2** Sholahuddin Rhatomy, Dwikora Novembri Utomo, Heri Suroto, Ferdiansyah Mahyudin. "Publication trends on the posterior cruciate ligament over the past 10 years in PubMed: Review article", *Annals of Medicine and Surgery*, 2020
Publication 1%
- 3** Lorenzo Loffredo. "The Role of Nicotinamide Adenine Dinucleotide Phosphate Oxidase in the Pathogenesis of Hypertension :", *High Blood Pressure & Cardiovascular Prevention*, 09/2009 1%

-
- | | | |
|----|--|------|
| 4 | Beauchet, Olivier, Sébastien Celle, Frédéric Roche, Robert Bartha, Manuel Montero-Odasso, Gilles Allali, and Cédric Annweiler. "Blood pressure levels and brain volume reduction : a systematic review and meta-analysis", Journal of Hypertension, 2013.
Publication | 1 % |
| 5 | www.tandfonline.com
Internet Source | 1 % |
| 6 | Simone Wirz. "Influence of PDGF-AB on Tissue Development in Autologous Platelet-Rich Plasma Gels", Tissue Engineering Part A, 03/17/2011
Publication | 1 % |
| 7 | www.bjcv.org
Internet Source | 1 % |
| 8 | www.ncbi.nlm.nih.gov
Internet Source | 1 % |
| 9 | R. C. Fitzgerald. "Hereditary diffuse gastric cancer: updated consensus guidelines for clinical management and directions for future research", Journal of Medical Genetics, 07/01/2010
Publication | 1 % |
| 10 | "Resistant Hypertension in Chronic Kidney Disease", Springer Science and Business | <1 % |

11

archive.org

Internet Source

<1 %

12

Michael G. Shlipak, Sri Lekha Tummalapalli, L. Ebony Boulware, Morgan E. Grams et al. "The case for early identification and intervention of chronic kidney disease: conclusions from a Kidney Disease: Improving Global Outcomes (KDIGO) Controversies Conference", *Kidney International*, 2020

Publication

<1 %

13

Hana Študentová, Denisa Vitásková, Vlastislav Šrámek, Jarmila Indráková et al. "Correlations of neutrophil-to-lymphocyte, lymphocyte-to-monocyte and platelet-to-lymphocyte ratios with biomarkers of atherosclerosis risk and inflammatory response in patients with a history of breast cancer", *Pteridines*, 2015

Publication

<1 %

14

Hossein Cheraghi, Morteza Zendejdel, Jamshid GhiasiGhalehkandi, Parviz Tajik, Negar Panahi. "The Effect of Leptin on Sex Hormones and Antioxidant Enzyme Levels in Obese and Normal Male Rats", *International Journal of Peptide Research and Therapeutics*, 2018

Publication

<1 %

15 Sindy Cornelia Nelwan, Ricardo Adrian Nugraha, Anang Endaryanto, Frisma Dewi et al. "Chapter 3 Correlation between Salivary Lipopolysaccharide of with Circulatory Immunoglobulin-E and Immunoglobulin-G in Periodontally Healthy Children with House Dust Mite Allergy ", IntechOpen, 2019
Publication

16 www.scielo.mec.pt
Internet Source

17 Marija Kocijancic, Zlatko Cubranic, Bozidar Vujicic, Sanjin Racki, Stefica Dvornik, Luka Zaputovic. "Soluble intracellular adhesion molecule-1 and omentin-1 as potential biomarkers of subclinical atherosclerosis in hemodialysis patients", International Urology and Nephrology, 2016
Publication

18 P. Pauletto. "Inflammation and hypertension: the search for a link", Nephrology Dialysis Transplantation, 12/19/2005
Publication

19 Tomoko Yamagishi, Nobukazu Fujimoto, Hideyuki Nishi, Yosuke Miyamoto et al. "Prognostic significance of the lymphocyte-to-monocyte ratio in patients with malignant pleural mesothelioma", Lung Cancer, 2015
Publication

20

journals.sagepub.com

Internet Source

<1 %

21

www.archivestsc.com

Internet Source

<1 %

22

www.researchsquare.com

Internet Source

<1 %

23

"The Therapeutic Use of N-Acetylcysteine (NAC) in Medicine", Springer Science and Business Media LLC, 2019

Publication

<1 %

24

Kyoung Im Cho, Soe Hee Ann, Gillian Balbir Singh, Ae-Young Her, Eun-Seok Shin.
"Combined Usefulness of the Platelet-to-Lymphocyte Ratio and the Neutrophil-to-Lymphocyte Ratio in Predicting the Long-Term Adverse Events in Patients Who Have Undergone Percutaneous Coronary Intervention with a Drug-Eluting Stent", PLOS ONE, 2015

Publication

<1 %

25

Mengxing Cai, Dongjie Liang, Feng Gao, Xia Hong, Xiafei Feng, Yating Yang, Shengjie Wu, Weijian Huang. "Association of lymphocyte-to-monocyte ratio with the long-term outcome after hospital discharge in patients with ST-elevation myocardial infarction", Coronary Artery Disease, 2020

Publication

<1 %

26 journals.plos.org <1 %
Internet Source

27 oaji.net <1 %
Internet Source

28 www.dovepress.com <1 %
Internet Source

29 www.oalib.com <1 %
Internet Source

30 "Regulation of NADPH Oxidase in Vascular Endothelium: The Role of Phospholipases, Protein Kinases, and Cytoskeletal Proteins", *Antioxidants & Redox Signaling*, 10/2008
Publication

31 "Sunday, 2 September 2007", *European Heart Journal*, 09/02/2007
Publication

32 Cihan Bedel, Fatih Selvi. "Association of Platelet to Lymphocyte and Neutrophil to Lymphocyte Ratios with In-Hospital Mortality in Patients with Type A Acute Aortic Dissection", *Brazilian Journal of Cardiovascular Surgery*, 2019
Publication

33 *Obesity*, 2016. <1 %
Publication

34 Ugur, Murat, Mehmet Gul, Mehmet Bozbay, Gokhan Cicek, Huseyin Uyarel, Bayram Koroglu, Mahmut Uluganyan, Serkan Aslan, Eyyup Tusun, Ozgur Surgit, Emre Akkaya, and Mehmet Eren. "The relationship between platelet to lymphocyte ratio and the clinical outcomes in ST elevation myocardial infarction underwent primary coronary intervention :", Blood Coagulation & Fibrinolysis, 2014.
Publication

35 annalsofintensivecare.springeropen.com <1 %
Internet Source

36 bmccardiovascdisord.biomedcentral.com <1 %
Internet Source

37 docplayer.net <1 %
Internet Source

38 e-sciencecentral.org <1 %
Internet Source

39 epdf.pub <1 %
Internet Source

40 jcp.bmj.com <1 %
Internet Source

41 link.springer.com <1 %
Internet Source

42	protocolexchange.researchsquare.com Internet Source	<1 %
43	www.scielo.br Internet Source	<1 %
44	"Abstracts Poster", American Journal of Transplantation, 05/2009 Publication	<1 %
45	cronfa.swan.ac.uk Internet Source	<1 %
46	kclpure.kcl.ac.uk Internet Source	<1 %
47	scindeks-clanci.ceon.rs Internet Source	<1 %

Exclude quotes On

Exclude matches Off

Exclude bibliography On

Association of high blood pressure with elevated oxidative stress, inflammatory marker and albuminuria in chronic kidney disease patients

GRADEMARK REPORT

FINAL GRADE

/100

GENERAL COMMENTS

Instructor

PAGE 1

PAGE 2

PAGE 3

PAGE 4

PAGE 5

PAGE 6

PAGE 7
