

Mixture of Sambiloto
(*Andrographis panniculata*
Nees.) and Salam (*Syzygium*
polyanthum (Wight.) Walp.)
Extract to Improve GLUT4 and
PPAR- γ Expression in
Hyperglycemic · Wistar Rats

by Iwan Sahrial Hamid

Submission date: 18-May-2021 03:24PM (UTC+0800)

Submission ID: 1588631072

File name: siding_Internasional_Mixture_of_Sambiloto_Andrographis...1.pdf (3.11M)

Word count: 2300

Character count: 12472

Mixture of Sambiloto (*Andrographis paniculata* Nees.) and Salam (*Syzygium polyanthum* (Wight.) Walp.) Extract to Improve GLUT4 and PPAR- γ Expression in Hyperglycemic Wistar Rats

*Wahyu Dewi Tamayanti¹, Ferawati¹, Iwan Sahrial Hamid², Elisabeth C. Widjajakusuma¹

¹Department of Clinical and Community Pharmacy, Faculty of Pharmacy, Widya Mandala Catholic University, Surabaya, Indonesia

²Department of Pharmacology, Faculty of Veterinary, Airlangga University, Surabaya, Indonesia
dewffua@gmail.com

Abstract

The increased prevalence of diabetes mellitus stimulates the ongoing study of molecular mechanisms of sambiloto (*Andrographis paniculata* Nees.) and salam (*Syzygium polyanthum* (Wight) Walp.) in relieving the disorder. The molecular study was done by treating hyperglycemia Wistar rats with a combination of sambiloto (AP) and salam (SP) extract. After 14 days of treatment, the rats were sacrificed and the liver organs were collected. The organs were stored in a solution of 10% buffered formalin to be blocked in paraffin afterwards. Subsequent molecular test was performed to identify GLUT4 and PPAR γ gene expression by immunohistochemistry method. This study showed that administration of a combination of sambiloto and salam extracts (6:1) in rats was able to increase the expression level of GLUT4 which resembled the expression level of GLUT4 after insulin administration. It was also found that the expression level of PPAR γ was increased after rats were treated by combination of AP and SP extracts (6:1). It showed that the increased expression of PPAR γ resembles the expression of PPAR γ after metformin stimulation. Interestingly, the administration of AP:SP extract (6:1) combination showed a level of GLUT4 expression that was not in line with PPAR γ expression.

1. INTRODUCTION

The prevalence of diabetes mellitus (DM) that remains increased stimulates the ongoing study of molecular mechanisms of sambiloto and salam in relieving the disorder. In hyperglycemic condition, ROS (reactive oxygen species) from mitochondria electron transport was occurred. If this condition persisted, cellular organelles may be damaged and enzymes activities may also be disturbed. Thus, increased lipid peroxydation and insulin resistance may ultimately be stimulated. Increased level of ROS can be diminished by induction of PPAR- γ coactivator, PGC-1 α (PPAR Gamma Coactivator-1a), MnSOD (manganese superoxide dismutase), and activation of AMPK (adenosine monophosphate activated protein kinase). The mechanism of action is carried out by metformin and pioglitazone. The thiazolidinedione (TZD) is another oral antidiabetic agent that acts as Peroxisome Proliferator Activated Receptor (PPAR γ) agonist to stimulate insulin sensitivity in cells (Braissant *et al.*, 1996). Increase level of PPAR γ may activate GLUT4, the gene

that plays role in regulating transport of glucose to the adipose tissue and skeletal muscle, as a response of increase insulin level in the blood (Watson *et al.*, 2004). It was mentioned that both sambiloto and salam are effective in reducing blood glucose level (Widjajakusuma *et al.*, 2010). Therefore, this molecular study was conducted to explore the efficacy of a mixture of sambiloto and salam extract in increasing PPAR γ and GLUT4 in hyperglycemic Wistar rats.

2. METHODS

2.1. Preparation of Extracts

Fresh *Andrographis paniculata* Nees. herbs (AP) and *Syzygium polyanthum* Wight. (Walp.) (SP) leaves that obtained from Pandaan, East Java were cleaned, cut, dried, and water extracted (Kaneria *et al.*, 2012). The water extracts was spray dried in order to obtain the dried extracts.

2.2. General Procedures

Healthy Wistar rats that were aged 2-3 months, weighted 200 – 250 g, blood glucose level of 65-100 mg/dl. The rats were randomly grouped into 8 groups of 6, namely: negative control group (K I); normal control group (K II); positive control group I (K III) – insulin; positive control group II (K IV) - metformin 9 mg/kg BW; treatment group I (K V) - AP extract; treatment group II (K VI) - SP extract; treatment group III - mixture of AP:SP extracts (6:1); treatment group IV (K VIII) – AP:SP mixture extract (2:1); treatment group V (K IX) – AP:SP mixture extract (1:2); treatment group VI (K X) – AP:SP mixture extract (1:6). Dose of extract was 200 mg/kg BW. Prior to the treatment, rats were administered by monohidrate alloxan 150 mg/kg BW through intraperitoneal route in order to reach the hyperglycemic condition (blood glucose level of 300-400 mg/dl). When hyperglycemic condition was achieved, mixture of AP and SP extracts was given for 14 days. After 14 days of treatment, the hyperglycemic rats were sacrificed and the liver was collected. The organs were stored in a solution of 10% buffered formalin to be blocked in paraffin afterwards.

2.3. Immunohistochemistry of GLUT 4 and PPAR γ

The rats livers were paraffine blocked and sliced into 3-4 μ m and incubated overnight 450 °C, then deparaffined with xylene. Subsequently, washed with PBS (phosphate buffer saline) and incubated in 3 % hydrogen peroxide (H₂O₂ in methanol). The antigen retrieval was conducted by incubating the slides in the citrate buffer pH 6. The 0,1% protease was added in 37 °C, digested with 100 μ g/ml proteinase K in buffer (0,01 mol/l trish HCl pH 7,8 0,005 mol/l EDTA dan 0,5 % SDS) and incubated in mouse serum. Subsequently, the normal mouse serum was cleaned by primer antibody (1 : 50) of IgG1 anti GLUT 4 and PPAR γ monoclonal antibody, in separate. Afterwards, incubation with secondary antibody IgG goat anti rat was conducted, streptavidin-peroxidase was dropped, and incubated in DAB for 5-15 minutes. Counterstain with hematoxylin eosin and rehydration were conducted with addition of absolute ethanol, 95% ethanol, 80% ethanol and xylol. The medium mounting was conducted lastly by adding gliserol gelatin prior to closing by deck glass.

3. RESULTS AND DISCUSSION

3.1. GLUT 4 Expression

This study showed that administration of AP and SP mixture extracts (6:1) in rats was able to increase the expression level of GLUT4 (figure 1 in brown) which resembled the expression level of GLUT4 after insulin administration (table 1). This study indicated that the mixture extracts were able to stimulate glucose transport to the cells by the high level of GLUT4 expression similar as insulin stimulation. This result is in line to the study of Widjayakusuma *et al.*, 2010 who reported the reduction of blood glucose level in rats after administration with mixture extracts of Ap and Sp.

Table 1. GLUT4 Expression (n=6) GLUT4 Expression in the liver of hyperglycemic Wistar Rats

	Groups	Means±SD
K I	Negative control	179±11
K II	Normal control	51±18
K III	Insulin	231±15
K IV	Metformin	54±20
K V	Ap (<i>Andrographis paniculata</i>)	141±23
K VI	Sp (<i>Syzygium polyanthum</i>)	151±23
K VII	Ap:Sp (6:1)	234±11
K VIII	Ap:Sp (2:1)	62±18
K IX	Ap:Sp (1:2)	70±15
K X	Ap:Sp (1:6)	43±18

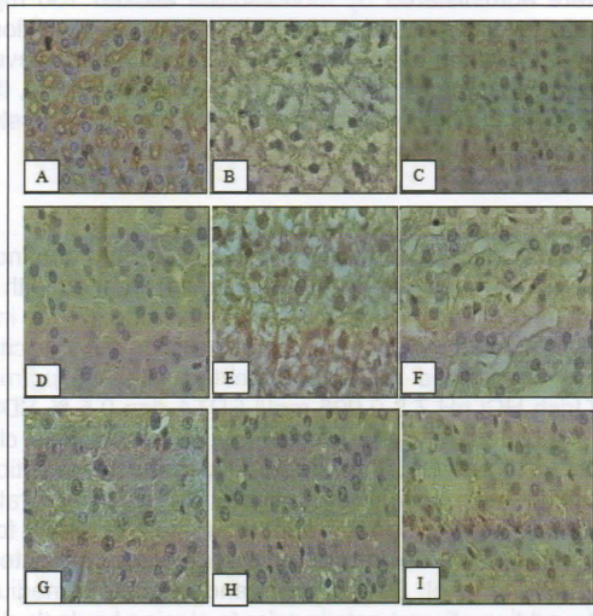


Figure 1. GLUT4 Expression in the liver of hyperglycemic Wistar Rats
 (A) Negative control group (B) Normal group (C) Insulin group (D) Metformin group (E) Ap group (F) Sp group (G) Ap:Sp=6:1 (H) Ap:Sp=2:1 (I) Ap:Sp=2:1

GLUT4 is a glucose transporter that was expressed by adipose tissue, muscle, and liver cells (Fukumoto *et al.*, 1989). GLUT4 is activated and facilitates glucose transport to the adipose tissue and muscle when insulin hormone is released. It was proved that insulin was the main regulator of GLUT4 mRNA expression in adipose tissue (Garvey *et al.*, 1989). This study found that GLUT4 was expressed in relatively same level as insulin, thus it was predicted that active compound of AP is able to induce glucose transport by stimulating the activation of GLUT4. The expression of GLUT4 was also increase in high-fat-fructose-fed rats (Nugroho *et al.*, 2011). Moreover, AP was also increase glucose cellular uptake in STZ-diabetics-induced rats by increasing the GLUT4 mRNA and protein level (Zhang *et al.*, 2009). Andrographolide, the active compound of AP also reported its ability to increase glucose uptake into the isolated ileus muscle of STZ-diabetic-induceds rat (Yu *et al.*, 2008).

3.2. PPAR γ expression

This study also showed the increased expression level of PPAR γ after rats were treated by mixture of sambiloto and salam extracts (6:1). It showed that the increased expression of PPAR γ resembles the expression of PPAR γ after metformin stimulation (table 2).

Table 2. PPAR γ Expression

Groups	Means \pm SD
K I Negative control	164 \pm 11
K II Normal control	169 \pm 9
K III Insulin	183 \pm 8
K IV Metformin	147 \pm 24
K V Ap (<i>Andrographis paniculata</i>)	178 \pm 13
K VI Sp (<i>Syzygium polyanthum</i>)	150 \pm 19
K VII Ap:Sp (6:1)	141 \pm 12

Table 2 showed relative high expression of PPAR γ that maybe indication of high reactivity of monoclonal antibody used in the immunohistochemistry process. Moreover, this result maybe also an indication that PPAR γ expression need to be studied in other organs or tissues such as adipose tissue, pancreas, or muscle tissue that are related to glucose transport. In figure 2, the PPAR γ expression can be seen brown in colour.

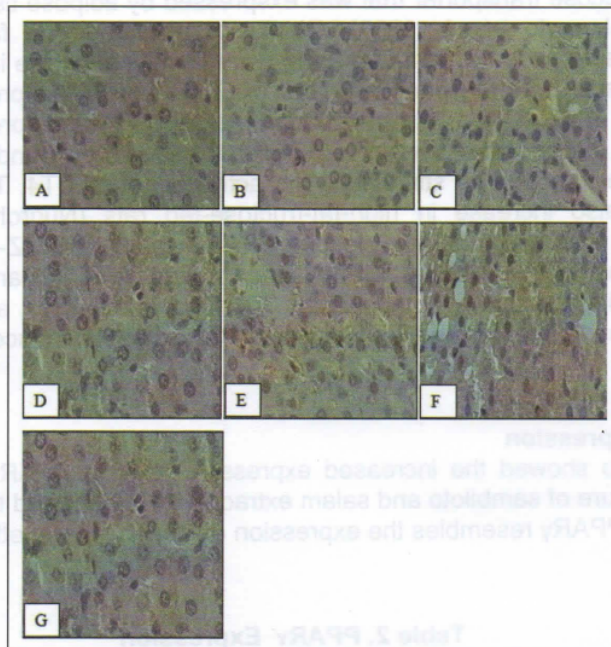


Figure 2. PPAR- γ Expression in the liver of hyperglycemic Wistar Rats

(A) Negative control group (B) Normal group (C) Insulin group (D) Metformin group (E) Ap group (F) Sp group (G) Ap:Sp=6:1

PPAR γ expression expressed in adipose and muscle tissue. PPAR γ promotes *tecl* differentiation adipose cells (Braissant *et al.*, 1996). GLUT4 activation during adipogenesis is closely related to the role of PPAR γ (Wu Z *et al.*, 1998). The role of PPAR γ to GLUT4 expression was shown in a study of wild ginseng in reducing body weight (Ollah *et al.*, 2008). In the study, wild ginseng administration of dose 100 and 200 mg/kg for 4 weeks, revealed the lowering blood glucose level and increasing of PPAR γ and GLUT4 expression, as well as insulin receptor in muscle and liver. Active compounds of SP was previously studied and revealed that campest-4-en-3-one, exhibited a significant protein tyrosine phosphatase 1B inhibitory (PTP1B) activity (Syaifudin *et al.*, 2012). PTP1B is an enzyme that found in insulin-targetting tissue (liver, muscle and adipose) that pays a role as a negative regulator in insulin signal transduction (Byon *et al.*, 1998).

Interestingly, the administration of AP and SP mixture extract (6:1) showed a level of GLUT4 expression that was not in line with PPAR- γ expression. The expressed PPAR- γ gene that were stimulated by the mixture extract maybe expressed in the different form as was previously studied, thus no relation with the level of GLUT4 was observed. These results explained that there maybe another gene expression than PPAR γ was expressed and induced activation of GLUT4 following the administration of Ap and Sp mixture extract.

4. CONCLUSIONS

Mixture extracts of *Andrographis paniculata* Nees and *Syzygium polyanthum* Wight. (Walp.) able to increase GLUT4 expression in alloxanne-diabetic induced.

5. REFERENCES

1. Syaifuddin, A., Tanaka, K., Kadota, S. and Tezuka, Y. 2012. Protein Tyrosine Phosphatase 1B (PTP1B)-inhibiting Constituents from the leaves of *Syzygium polyanthum*. *Planta Medica*
2. Braissant, O., Fougère, F., Scott, C., Dauce, M. and Wahli, W. 1996. Differential expression of peroxisome proliferator-activated receptors (PPARs): tissue distribution of PPAR- α , β and γ in the adult rat. *Endocrinology* 137, 354-366.
3. Byon, J.C.H., Kusari, A.B. and Kusari, J. 1998. Protein-tyrosine phosphatase-1B acts as a negative regulator of insulin signal transduction. *Mol Cell Biochem* 1998; 182: 101-108
4. Elisabeth, E.C., Ferawati, Surjadhana, A. and Hendriati, L. 2010. Antidiabetic Properties of *Andrographis paniculata* Nees and *Eugenia polyantha* Wight Leaves in Wistar Rats by Oral Glucose Tolerance Test. International Conference and Talkshow on Medicinal Plant.
5. Watson, R.T., Kanzaki, M. and Pessin, J.E. 2004. Regulated membrane trafficking of the insulin-responsive glucose transporter 4 in adipocytes. *Endocr. Rev.*, 25 (2): 177-204.
6. Zhang, Z., Jiang, J., Yu, P., Zeng, X., Larrick, J.W. and Wang, Y. 2009. Hypoglycemic and beta cell protective effects of andrographolide analogue for diabetes treatment, *J. Transl. Med.*, 7: 62
7. Nugroho, A.E., Andrie, M., Susilowati, R., Nurrochmad, A., Lukitaningsih, E. and Pramono, S. 2011. Ethanolic extracts of *A. paniculata* (Burm.f.) nees and its active compounds, andrographolide, decrease the expression of glucose transporter (GLUT 4) in high fructose-fat fed rats, *Intl J Phytomed.*, 3: 486
8. Yu, B.C., Chang, C.k., Su, C.F. and Cheng, J.T. 2008. Mediation of beta-endorphin in andrographolide -induced plasma glucose-lowering action in type I diabetes-like animals, *Naunyn Schmiedebergs Arch Pharmacol*, 377: 529.
9. Kaneria, M., Kanani, B. and Chanda, S. 2012. Assessment of effect of hydroalcoholic and decoction methods on extraction of antioxidants from selected Indian medicinal plants. *Asian Pacific Journal of Tropical Biomedicine*, 195-202.
10. Fukumoto, H., Kayano, T., Buse, J.B., Edwards, Y., Pilch, P.F., Bell, G.I. and Seino, S. 1989. Cloning and characterization of the major insulin-responsive glucose transporter expressed in human skeletal muscle and other insulin-responsive tissues. *Journal of Biology Chemistry*, 264: 7776-79
11. Garvey, W.T., Huecksteadt, T.P. and Birnbaum, M.J. 1989. Pretranslational suppression of an insulin-responsive glucose transporter in rats with diabetes mellitus. *Science*, 245: 60-63
12. Ollah, M.L., Kim, G., Moon, H., Chung, S., Cheon, Y., Kim, J. and Kim, K. 2008. Antiobesity effects of wild ginseng (*Panax ginseng* C.A. Meyer) mediated by PPAR- γ , GLUT4 and LPL in ob/ob mice. *Phytotherapy Research*, 23: 220-225.

Mixture of Sambiloto (*Andrographis paniculata* Nees.) and Salam (*Syzygium polyanthum* (Wight.) Walp.) Extract to Improve GLUT4 and PPAR- γ Expression in Hyperglycemic Wistar Rats

ORIGINALITY REPORT

8%

SIMILARITY INDEX

3%

INTERNET SOURCES

7%

PUBLICATIONS

0%

STUDENT PAPERS

PRIMARY SOURCES

- 1 Li Wang, Zongbao Liu, Xiaofei Liu, Yuntang Wu. "Microwave-assisted synthesis of chitooligosaccharide guanidine and its effect on GLUT4-dependent glucose uptake through an Akt-activated protein kinase signaling pathway in L6 skeletal muscle cells", *RSC Advances*, 2016
Publication 1%
- 2 Subramoniam, Appian. "Anti-Diabetes Mellitus Plants", *Plants with Anti-Diabetes Mellitus Properties*, 2016.
Publication 1%
- 3 www.thieme-connect.com
Internet Source 1%
- 4 Y. Si, Y. Zhao, H. Hao, J. Liu, Y. Guo, Y. Mu, J. Shen, Y. Cheng, X. Fu, W. Han. "Infusion of Mesenchymal Stem Cells Ameliorates Hyperglycemia in Type 2 Diabetic Rats: 1%

Identification of a Novel Role in Improving Insulin Sensitivity", Diabetes, 2012

Publication

-
- 5 Elisabeth Catherina Widjajakusuma, Arijanto Jonosewojo, Lucia Hendriati, Sumi Wijaya et al. "Phytochemical screening and preliminary clinical trials of the aqueous extract mixture of *Andrographis paniculata* (Burm. f.) Wall. ex Nees and *Syzygium polyanthum* (Wight.) Walp leaves in metformin treated patients with type 2 diabetes", *Phytomedicine*, 2018
Publication 1 %
-
- 6 ejournal.litbang.depkes.go.id
Internet Source 1 %
-
- 7 B. Jager, R. Liedtke, F. Lamprecht, H. Freyberger. "Social and health adjustment of bulimic women 7-9 years following therapy", *Acta Psychiatrica Scandinavica*, 2004
Publication <1 %
-
- 8 Gert Böhme. "Chapter 8 Approximatives Schließen", Springer Science and Business Media LLC, 1993
Publication <1 %
-
- 9 Wong Tet Soon, Hassan Fahmi Ismail, Zanariah Hashim, Fadzilah Adibah Abdul Majid. "Synergistic antihyperglycaemic effect of combination therapy with gallic acid and andrographolide in streptozotocin-induced

diabetic rats", Biocatalysis and Agricultural Biotechnology, 2019

Publication

10

www.ifrj.upm.edu.my

Internet Source

<1 %

11

www.scribd.com

Internet Source

<1 %

Exclude quotes Off

Exclude matches Off

Exclude bibliography On

Mixture of Sambiloto (*Andrographis paniculata* Nees.) and Salam (*Syzygium polyanthum* (Wight.) Walp.) Extract to Improve GLUT4 and PPAR- γ Expression in Hyperglycemic Wistar Rats

GRADEMARK REPORT

FINAL GRADE

/0

GENERAL COMMENTS

Instructor

PAGE 1

PAGE 2

PAGE 3

PAGE 4

PAGE 5

PAGE 6
