

# Downregulation of The Expression of MMP-3 and TIM-1 By Metformin Regardless of TNF-alfa Level in an In Vitro Lens Capsule Fibrosis Model

*by* Razzaqy Razzaqy

---

**Submission date:** 28-Jul-2021 01:00PM (UTC+0800)

**Submission ID:** 1624948871

**File name:** of\_TNF-alfa\_Level\_in\_an\_In\_Vitro\_Lens\_Capsule\_Fibrosis\_Model.pdf (238.09K)

**Word count:** 3237

**Character count:** 17139

## DOWNREGULATION OF THE EXPRESSION OF MMP-3 AND TIMP-1 BY METFORMIN REGARDLESS OF TNF- $\alpha$ LEVEL IN AN *IN VITRO* LENS CAPSULE FIBROSIS MODEL

Razzaqi<sup>1</sup>, Reni Prastyani<sup>1</sup>, Yulia Primitasari<sup>1</sup> and Maftuchah Rochmanti<sup>2</sup>

<sup>1</sup>Department of Ophthalmology, Faculty of Medicine, Universitas Airlangga, Surabaya, Indonesia.

<sup>2</sup>Department of Pharmacology, Faculty of Medicine, Universitas Airlangga, Surabaya, Indonesia.

email:razzaqi@outlook.com

(Received 25 August 2019, Revised 23 October 2019, Accepted 25 October 2019)

**ABSTRACT :** Metformin, of biguanide groups, was found to possess some anti-inflammatory and anti-fibrotic ability. The drug also showed the capability of inhibiting human lens epithelial cells (HLECs) migration *in vitro*. Therefore, the aim of this study was to investigate the potential of metformin in reducing the expression of TNF- $\alpha$  as the key cytokine of inflammatory process as well as MMP-3 and TIMP-1 in the early proliferative phase of epithelial-mesenchymal transition (EMT) in lens capsule fibrosis. This study uses HLECs, as initiator of EMT in the development of posterior capsular fibrosis after surgery. These were isolated from the anterior capsule of a cataractous eye. The HLECs were cultured and divided into 4 groups, *i.e.*, FBS 10% control group, as well as the metformin 0.1 mM, 0.5 mM and 1.0 mM treatment groups. The expression of TNF- $\alpha$  was assessed 6 hours after intervention using ELISA, while MMP-3 and TIMP-1 immunofluorescence were evaluated 7 days following metformin administration. The data were analyzed using through One-way ANOVA followed by post hoc test at 95% confidence interval ( $p < 0.05$ ). Low concentration of TNF- $\alpha$  was detected in all groups, with the lowest in FBS 10% group ( $5.9896 \pm 0.0357$  pg/mL). Similarly, metformin decreases the expression of MMP-3 and TIMP-1 with mean intensity of  $1.8069 \times 10^5 \pm 1.2715 \times 10^5$  pixels and  $2.6662 \times 10^5 \pm 1.6261 \times 10^5$  pixels, which were respectively found to be significantly lower than control group ( $p < 0.05$ ). This result showed metformin role in early proliferative phase of lens EMT directly without TNF- $\alpha$  attenuation. Metformin has an anti-fibrotic role by downregulating proteolytic enzyme such as MMP-3 and TIMP-1 regardless the expression of TNF- $\alpha$ .

**Key words:** Metformin, lens epithelial cells, MMP-3, TIMP-1, fibrosis.

### INTRODUCTION

Posterior capsular opacification (PCO) is the most common postoperative complication of cataract surgery with varying incidence in adult patients ranging from roughly 38.5% to 67% (Jorge *et al*, 2014; Jick *et al*, 2016). The condition arises from residual hyperproliferative human lens epithelial cells (HLEC) after extracapsular cataract surgery. Also, this HLEC phenotype modification is mediated through epithelial-mesenchymal transition (EMT) towards fibrocytic morphology accompanied with aberrant synthesis of the basal membranes. Additionally, mechanical injury-activated cells attenuate gene transcription associated with their survival maintenance within 24 hours, thereby initiating the expression of the genes responsible in regulating fibrosis (Jiang *et al*, 2018). Such mechanical stress leads to the expression of aldose reductase which induces the phosphorylation of akt/mTOR signaling axis, as well as the upregulation of numerous inflammatory cytokines such as TNF- $\alpha$ , IL-6 and TGF- $\beta$ . The main

effector of fibrosis, TGF- $\beta$ , orchestrates EMT via Smad, p38 MAPK, JNK and ERK 1/2 which are accessible by TNF- $\alpha$  to regulate the same process. In addition, the initiation of EMT by TNF- $\alpha$  is aided by IL-6 and NF- $\kappa$ B resulting in the upregulation of MMP and TIMP. The imbalance in MMP3 and TIMP1 plays a role in fibrotic cataract (Tan *et al*, 2006). Also, the overexpression of both enzymes results in E-cadherin downregulation which subsequently affects cellular proliferation, differentiation, and migration (West-Mays and Korol, 2014; D'Angelo *et al*, 2014). Furthermore, overexpression of MMP-3 alter FGF-2 trait to further increase HLEC migration.

The strategy for PCO prevention and treatment remains a challenge, with no idyllic result to date. Metformin of biguanide group, is found to possess anti-inflammatory and anti-fibrotic activity. The drug downregulates NF- $\kappa$ B by activating AMPK through mTORC1, inhibiting inflammatory cytokines including IL-1 $\alpha$ , IL-6, TNF- $\alpha$  and TGF- $\beta$ , repressing catabolic gene encoder for MMP-3, downregulating TIMP-1 and

increasing promoter gene for E-cadherin expression in various cells (Hwang and Jeong, 2010; Park *et al*, 2010). Also, metformin is shown to reduce  $\alpha$ -SMA, fibronectin, as well as LEC proliferation and migration in the development of EMT on HLEC *in vitro* (Lasiste *et al*, 2018). Therefore, the purpose of current study is to investigate both anti-inflammatory and anti-fibrotic effect of metformin on inhibiting the expression of TNF- $\alpha$ , MMP-3 and TIMP-1 in an *in vitro* lens capsule fibrosis model.

## MATERIALS AND METHODS

### Materials

The main reagents used in this study include Dulbecco's modified eagle medium (DMEM) from Gibco-Life Technologies, USA; non-essential amino acid (NEAA) from Sigma, USA; trypsin from Gibco - Life Technologies, USA; fetal bovine serum (FBS) from Biowest, USA; basic fibroblast growth factor (bFGF) from Gibco-Life Technologies, USA and Insulin-transferin-selenium (ITS) from Gibco-Life Technologies, USA. Also, the human TNF- $\alpha$  ELISA kit (E-EL-H0109) from Elabscience, USA. Then, the primary FITC antibodies for immunocytochemistry to vimentin, p63, MMP-3 and TIMP-1 all purchased from BIOSS, USA.

### Methods

#### Study design

This is an *in vitro* study involving the HLECs of cataract patient, conducted in Stem Cell Research and Development Center, Universitas Airlangga. All experimental procedures were in line with local ethics review board in Dr. Soetomo Hospital. The cultures of HLECs were divided into four groups, *i.e.*, FBS 10%-treated control group in culture media, metformin 0.1 mM, 0.5 mM and 1.0 mM groups. TNF- $\alpha$  concentration was assessed from the supernatant collected from each group at 6 hours after treatment. Expression levels of MMP-3 and TIMP-1 were measured on 7 days after treatment.

#### Tissue collection and isolation of HLECs

The lens capsule explant was obtained through routine uneventful cataract surgery conducted on a single patient, aged 54 years, with senile nuclear immature cataract at Dr. Soetomo Hospital, Surabaya. The cell isolation was in accordance to the protocol established by Ibaraki (2002) and modified by Andjelja *et al* (2015) through dissecting the anterior portion of the lens capsule. Primary HLEC cultures were obtained by cutting the capsule into a size of 0.5x0.5 mm, plated firmly into collagenase A-coated 60-mm petri dish and stored the dish in a CO<sub>2</sub> incubator at

37°C and 5% CO<sub>2</sub> for 30 minutes. The tissues were then cultured in 3mL growth media (10 % FBS + 5 ng/mL FGF + 1 % gentamicin), until 90% confluency was achieved. The cells were harvested and passaged after 5 to 7 days of culture. In order to confirm epithelial cells with multipotent nature, the cultured HLECs were characterized at passage 3 for the expression of vimentin and p63-FITC antibody, then counterstained with DAPI. The stained cells were visualized under fluorescence microscope (BH2-RFL-T3 model fluorescence attachment, Olympus) and positive expressions were characterized by glowing green cells.

#### Metformin preparation

The preparation of metformin in this study was in accordance with the protocol established by Dowling *et al* (2010) and Lasiste *et al* (2018). Metformin hydrochloride (Alpha Science Innolabs, Jakarta, Indonesia) was dissolved to a concentration of 10 mM in 20 mL alpha modified eagle medium ( $\alpha$ -MEM). The range of concentrations utilized in this study in growth media were 0.1-1 mM metformin.

#### *In vitro* lens capsule fibrosis model

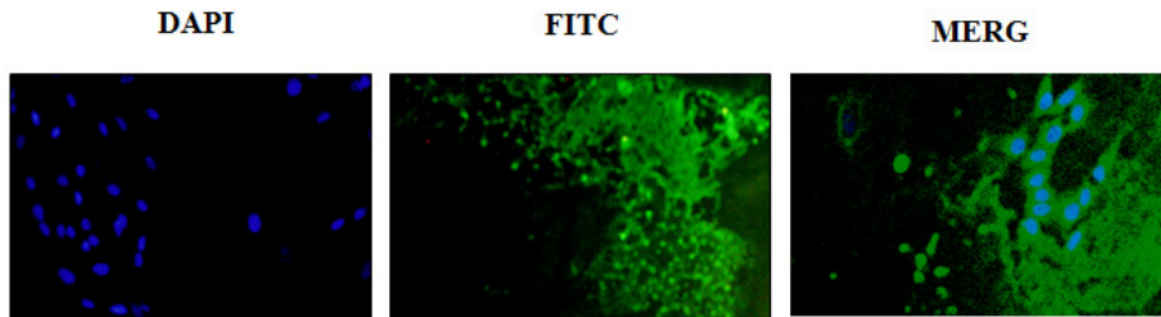
HLECs at  $3 \times 10^5$  cells/well were seeded into 96-well culture dishes and allowed to attach and grow to confluency. Scratch wounding were performed on the cells by yellow pipette tip. Intervened cells were then washed with medium to remove loose or dead cells. Treatment with 10% FBS for control group, and metformin of 0.1-1 mM concentration were administered for 7 days.

#### TNF- $\alpha$ expression analysis using ELISA

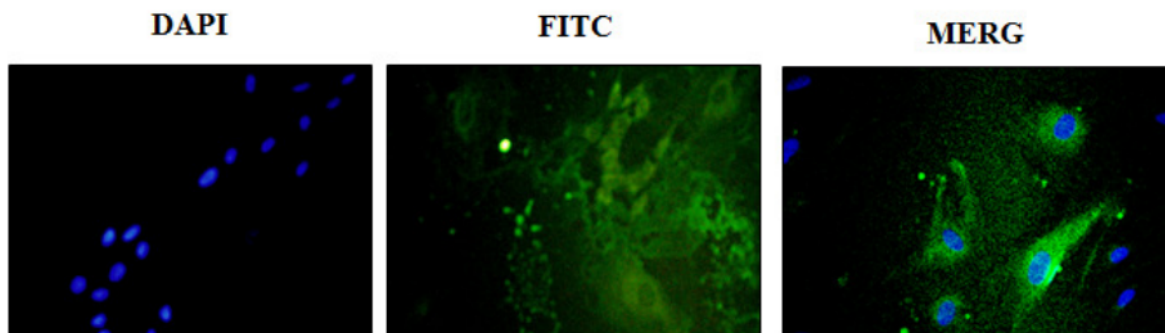
Supernatants were collected 6 hours post-wounding from the control group and 6 hours after adding metformin from the treatment groups for TNF- $\alpha$  assessment. 100  $\mu$ L supernatant of each group were relocated into a 96-well plate and incubated for 90 minutes at 37°C. The liquids were then removed from each well and 100  $\mu$ L of Biotinylated detection antibody working solution was added to each well and the plate was incubated for 1 hour at 37°C. The solution was aspirated from the wells and 350  $\mu$ L of wash buffers were added to soak and wash the plate for at least 3 times. HRP conjugate, substrate reagent, and stop solution application to the wells were done as instructed in the datasheet from the kit. Optical density values were read at 450 nm.

#### Immunofluorescence staining of MMP-3 and TIMP-1

Each group was tested for immunofluorescence to measure the expression levels of MMP-3 and TIMP-1 after 7 days of treatment. Firstly, the culture media were



**Fig. 1** : p63-stained HLECs. Left section: cells were stained with DAPI; middle section: p63-FITC; right section: merged pictures of two sections (inverted fluorescence microscope; 200x magnification).



**Fig. 2** : Vimentin-stained HLECs. Left section: cells were stained with DAPI; middle section: Vimentin-FITC; right section: merged pictures of two sections (inverted fluorescence microscope, 200x magnification).

aspirated and fixated with 3% formaldehyde for 15 minutes at room temperature. Subsequently, each well was washed in PBS 4 times, allowed to dry, and blocked with PBS containing 1% serum for 15 minutes at room temperature. Next, MMP-3 and TIMP-1 antibodies were added to each group and cell cultures were incubated at -4°C overnight. The results were then viewed using fluorescence microscope at 200x and 400x magnification while the expression levels were analyzed using ImageJ software version 1.52p. These were expressed in corrected total cell fluorescence (CTCF) determined through the formula: Integrated Density - (Area of selected cell  $\times$  mean fluorescence background readings).

#### Statistical analysis

The statistical analyses were performed using SPSS version 25.0 software. These involved One-way ANOVA test, followed by Tukey HSD post hoc test, conducted to determine the statistical differences of TNF- $\alpha$  concentration as well as the fluorescence intensity of MMP-3 and TIMP-1 between groups at  $p < 0.05$ .

### RESULTS

#### Isolation and characterization of HLECs

The HLECs were isolated through the explant technique. On supplementing the cell cultures with bFGF

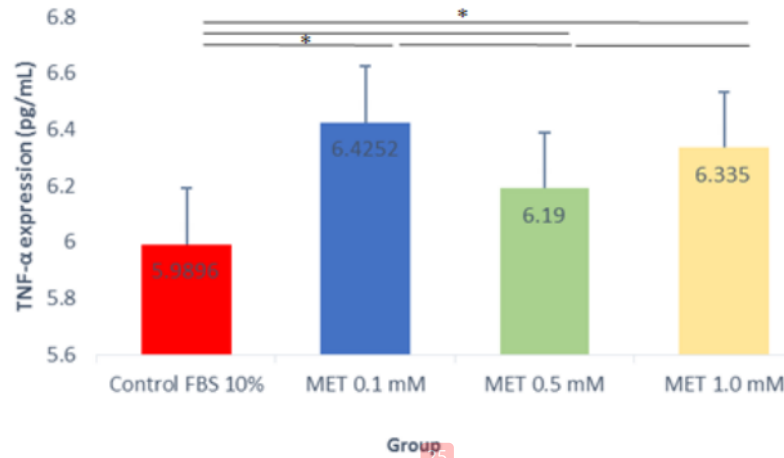
and NEAA, confluency of 85-90% were reached in day 14. Vimentin and p63 were characterized and visualized under microscope fluorescence on passage 3 as shown in Figs. 1 and 2.

#### TNF- $\alpha$ expression

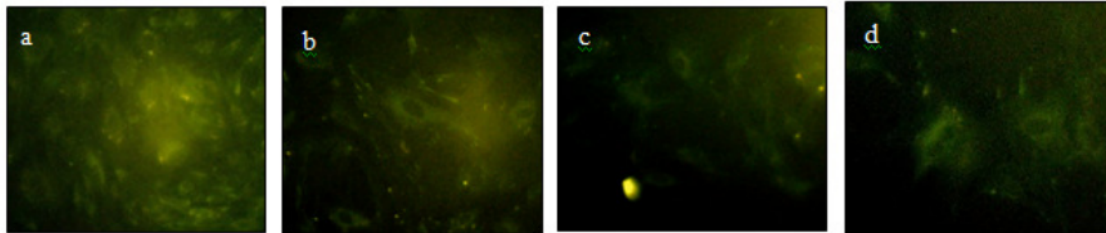
Six hours after treatment, the supernatants from all the groups were tested for TNF- $\alpha$  expression. The results showed that all the groups have low concentration of TNF- $\alpha$  expressions with the least concentration was found in FBS 10% control group (5.9896 pg/mL; with One-way ANOVA test ( $F(3,20) = 7.067$ ,  $p = 0.002$ ). The Tukey HSD post hoc test showed a statistically significant difference result between the control group with FBS 10% compared with the metformin 0.1 mM ( $p = 0.002$ ) and 1.0 mM ( $p = 0.013$ ) groups as shown in Fig. 3.

#### MMP-3 and TIMP-1 expression

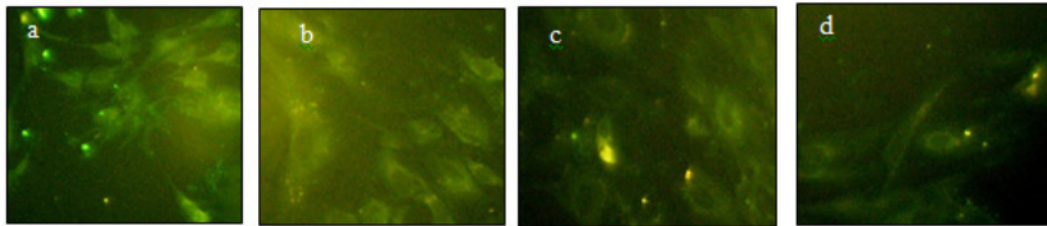
The MMP-3 expression decreases after the administration of metformin 0.1 mM ( $3.0102 \times 10^5$  pixels  $\pm$   $2.0813 \times 10^5$  pixels), 0.5 mM ( $2.5817 \times 10^5$  pixels  $\pm$   $1.0759 \times 10^5$  pixels) and 1.0 mM ( $1.8069 \times 10^5$  pixels  $\pm$   $1.2715 \times 10^5$  pixels). Also, the Tukey HSD post hoc test revealed significant reduction of MMP-3 expression in 1.0 mM concentration compared to control group ( $p = 0.012$ ).



**Fig. 3 :** Average TNF- $\alpha$  expression (post hoc Tukey HSD, \* $p < 0.05$ ).



**Fig. 4 :** MMP-3 expression in control FBS 10% group (a), metformin 0.1 mM group (b), metformin 0.5 mM group (c), and metformin 1.0 mM group (d) (inverted fluorescence microscope, 200x magnification).



**Fig. 5 :** TIMP-1 expression in control FBS 10% group (a), metformin 0.1 mM group (b), metformin 0.5 mM group (c), and metformin 1.0 mM group (d) (inverted fluorescence microscope, 200x magnification).

Similarly, the fluorescence staining of TIMP-1 lessens after treatment of 0.1 mM ( $6.3759 \times 10^5 \text{ pixels} \pm 3.3324 \times 10^5 \text{ pixels}$ ), 0.5 mM ( $2.6662 \times 10^5 \text{ pixels} \pm 1.6261 \times 10^5 \text{ pixels}$ ) and 1.0 mM ( $3.2540 \times 10^5 \text{ pixels} \pm 1.6244 \times 10^5 \text{ pixels}$ ) metformin. The Tukey HSD post hoc test result also revealed statistically significant decrease in 0.5 mM ( $p=0.003$ ) and 1.0 mM ( $p=0.008$ ) metformin groups compared with the FBS 10% group as shown by its fluorescence intensity in Figs. 4 and 5.

### DISCUSSION

Mechanical stress-activated HLECs play role in EMT initiation associated with PCO development by decreasing gene transcription, which maintains the epithelial cell phenotype within the first 24 hours and upregulating gene that promotes fibrosis and mesenchymal cell survival

(Jiang *et al*, 2018). This study revealed that metformin-treated HLECs expressed less MMP-3 and TIMP-1 (Figs. 4 and 5) without downregulation effect on TNF- $\alpha$  (Fig. 3). However, scratch wounding stimuli in other studies showed induction of aldose reductase pathway and increased expression of toll-like receptor (TLR)-4 mRNA, which results in phosphorylation of p38 MAPK, JNK, and ERK 1/2 followed by the activation of proinflammatory and profibrogenic cytokines as well as proteolytic enzymes (Zhao *et al*, 2017). Also, a study the found expression of MMP-3 and MMP-9 by inhibiting phosphorylation of NF- $\kappa$ B transcription and the activators of STAT3 pathway by TLR-4 (Eslani *et al*, 2014; Zhang *et al*, 2019). Attenuation of TLR-4 in the lens results in decelerated cellular proliferation (Yu and Lu, 2015). NF- $\kappa$ B phosphorylation is responsible for the expression of

TIMP-1 and MMP-3. Aside of modulation through TLR-4, upregulation of MicroRNA-26b by metformin inhibits NF- $\kappa$ B translocation into nucleus of cells. In a study conducted by Lisboa *et al* (2013), there were no increase in TNF- $\alpha$  and IL-1 $\beta$  after TLR was activated by mechanical force stimulus, which is in concordance with the result of this study, which showed low expression of TNF- $\alpha$  in all the groups. On the other hand, increased expression of TNF- $\alpha$  among treatment groups in this study may be associated with its activation by metformin-induced lipocalin-2 (LCN2). In an injured lens, Jiang *et al* (2018) discovered that LCN2 regulates proinflammatory cytokines including TNF- $\alpha$  within the first 24 hours and subsides in 48 hours. However, this multifunctional protein shows protective capability in some study in other cells which in turn counter their proinflammatory nature (Kang *et al*, 2017; Kang *et al*, 2018). Regarding EMT in PCO, metformin works through SLC22A1 receptor in HLECs in vitro with optimum dose of 0.5 mM and has the capacity to penetrate transcorneally *in vivo* as shown in the study conducted by Nirmal *et al* (2013). The results of this study showed effective dose of 0.5-1.0 mM which were correlated to the downregulation of TIMP-1 and MMP-3.

Our study has several limitations. This study is a post-test only design, thus, the baseline levels of each parameter in primary HLEC culture were not assessed. TNF- $\alpha$  expression was only evaluated in protein level, hence localization of intracellular TNF- $\alpha$  could not be confirmed with this method. We did not evaluate the downstream for MMP-3 and TIMP-1 particularly such as E-cadherin shedding and extracellular matrix changes which were observed to be fibrosis marker in PCO.

### CONCLUSION

Metformin has an anti-fibrotic role by downregulating MMP-3 and TIMP-1 regardless the expression of TNF- $\alpha$ .

### Conflict of interests

None

### ACKNOWLEDGMENT

Stem cell research and development center Universitas Airlangga, Surabaya.

### REFERENCES

- D'Angelo R C, Liu X W, Najy A J, Jung Y S, Won J, Chai K X, Fridman R and Kim H R C (2014) TIMP-1 via TWIST1 Induces EMT Phenotypes in Human Breast Epithelial Cells. *Molecular Cancer Research* **12**(9), 1324-1333.
- Eslani M, Movahedan A, Afsharkhamesh N, Sroussi H and Djalilian A R (2014) The Role of Toll-Like Receptor 4 in Corneal Epithelial Wound Healing. *Investigative Ophthalmology & Visual Science* **55**(9), 6108-6115.
- Hwang Y P and Jeong H G (2010) Metformin Blocks Migration and Invasion of Tumour Cells by Inhibition of Matrix Metalloproteinase-9 Activation through A Calcium and Protein Kinase C $\alpha$ -dependent Pathway: Phorbol-12-myristate-13-acetate-induced/extracellular signal-regulated kinase/activator protein-1. *British Journal of Pharmacology* **160**, 1195-1211.
- Jiang J, Shihan M H, Wang Y and Duncan M K (2018) Lens Epithelial Cells Initiate and Inflammatory Response Following Cataract Surgery. *Investigative Ophthalmology and Visual Science* **59**(12), 4986-4997.
- Jick S L, Beardsley T L, Brasington C R, Buznego C, Grostern R J, Park L and Roberts T V (2016) Complications of Cataract Surgery in *Basic and Clinical Science 2016-2017: Section 11 Lens and Cataract*. San Francisco: American Academy of Ophthalmology.
- Jorge P, Jorge D, Ventura C, Ventura B, Lira W, Carvalho Ventura M, Santiago M R and Kara-Junior N (2014) Incidence of Posterior Capsule Opacification Following the Implantation of A Foldable Hydrophilic Acrylic Intraocular Lens: A 4 Year Follow-Up Study. *Arquivos Brasileiros de Oftalmologia* **77**(4), 222-224.
- Kang S S, Ren Y, Liu C C, Kurti A, Baker K E, Bu G, Asmann Y and Fryer J D (2018) Lipocalin-2 Protects the Brain during Inflammatory Conditions. *Molecular Psychiatry* **23**, 344-350.
- Kang Y T, Hsu W C, Wu C H, Hsin I L, Wu P R, Yeh K T and Ko J L (2017) Metformin Alleviates Nickel-Induced Autophagy and Apoptosis via Inhibition of Hexokinase-2, Activating Lipocalin-2, in Human Bronchial Epithelial Cells. *Oncotarget* **8**(62), 105536-105552.
- Lasiste J M E F, Zoroquiain P, Miyamoto D and Burnier M N (2018) Metformin Activity in an In Vitro Model of Posterior Capsule Opacification. *Vision Pan-America* **17**(4), 105-112.
- Lisboa R A, Andrade M V and Cunha-Melo J R. Toll-like receptor activation and Mechanical force stimulation promote the secretion of matrix metalloproteinases 1, 3 and 10 of human periodontal fibroblasts via p38, JNK and NF- $\kappa$ B. *Archives of oral Biology* **58**, 731-739.
- Nirmal J, Singh S B, Biswas N R, Thavaraj V, Azad R V and Velpandian T (2013) Potential Pharmacokinetic Role of Organic Cation Transporters in Modulating the Transcorneal Penetration of Its Substrates Administered Topically. *Eye* **27**, 1196-1203.
- Park H Y L, Kim I T, Lee K M, Choi J S, Park M O and Joo C K (2010) Effects of Nuclear Factor- $\kappa$ B Small Interfering RNA on Posterior Capsule Opacification. *Investigative Ophthalmology and Visual Science* **51**, 4707-4715.
- Tan Q, Jiang J and Luo D Q (2006) Effects of Matrix Metalloproteinase-3, Osteopontin and Tissue Inhibitor of Metalloproteinase-1 in the Formation of Cataract. *Journal of Central South University* **31**(5), 737-741.
- West-Mays J A and Korol A (2014) The Lens Capsule: Synthesis, Remodelling, and MMPs. In : Saika S, Werner L and Lovicu F J (eds.) *Lens Epithelium and Posterior Capsular Opacification*. Japan: Springer. pp 39-52.
- Yu H T and Lu P R (2015) Effects of Lentiviral Short Hairpin RNA Silencing of Toll-Like Receptor 4 on the Lens Epithelial Cell Line HLEC. *Genetics and Molecular Research* **15**(2), 1-9.
- Zhang M, Xue Y, Chen H L, Meng L B, Chen B D, Gong H, Zhao Y Y and Qi R M (2019) Resveratrol Inhibits MMP3 and MMP9 Expression and Secretion by Suppressing TLR4/NF- $\kappa$ B/STAT3 Activation in Ox-LDL-Treated HUVECs. *Oxidative Medicine and Cellular Longevity* **2019**, 1-15.
- Zhao J X, Yuan Y W, Cai C F, Shen D Y, Chen M L, Ya F, Mi Y J, Luo Q C, Cai W Y, Zhang W, Long Y, Zeng Y, Ya G D and Yang S Y (2017) Aldose Reductase Interacts with AKT1 to Augment Hepatic AKT/mTOR Signaling and Promote Hepatocarcinogenesis. *Oncotarget* **8**(40), 66987-67000.

# Downregulation of The Expression of MMP-3 and TIM-1 By Metformin Regardless of TNF-alfa Level in an In Vitro Lens Capsule Fibrosis Model

## ORIGINALITY REPORT

17%

SIMILARITY INDEX

14%

INTERNET SOURCES

13%

PUBLICATIONS

0%

STUDENT PAPERS

## PRIMARY SOURCES

1	<a href="http://sinta.ristekbrin.go.id">sinta.ristekbrin.go.id</a> Internet Source	3%
2	Cita R. S. Prakoeswa, Yuyun Rindiastuti, Yohanes Widodo Wirohadidjojo, Evelyn Komaratih et al. "Resveratrol promotes secretion of wound healing related growth factors of mesenchymal stem cells originated from adult and fetal tissues", <i>Artificial Cells, Nanomedicine, and Biotechnology</i> , 2020 Publication	1%
3	<a href="http://www.jkaoms.org">www.jkaoms.org</a> Internet Source	1%
4	<a href="http://www.jisprm.org">www.jisprm.org</a> Internet Source	1%
5	<a href="http://www.jstage.jst.go.jp">www.jstage.jst.go.jp</a> Internet Source	1%
6	Rohan Umesh Parekh, Jacques Robidoux, Srinivas Sriramula. "Kinin B1 Receptor	1%

# Blockade Prevents Angiotensin II-induced Neuroinflammation and Oxidative Stress in Primary Hypothalamic Neurons", Cellular and Molecular Neurobiology, 2019

Publication

---

7	<a href="http://www.jbc.org">www.jbc.org</a> Internet Source	1 %
8	<a href="http://nrs.harvard.edu">nrs.harvard.edu</a> Internet Source	1 %
9	<a href="http://arizona.openrepository.com">arizona.openrepository.com</a> Internet Source	1 %
10	Zihui Xiao, Wenjun Wu, Vladimir Poltoratsky. "Metformin Suppressed CXCL8 Expression and Cell Migration in HEK293/TLR4 Cell Line", Mediators of Inflammation, 2017 Publication	<1 %
11	<a href="http://jcdr.net">jcdr.net</a> Internet Source	<1 %
12	<a href="http://orbi.uliege.be">orbi.uliege.be</a> Internet Source	<1 %
13	<a href="http://synapse.koreamed.org">synapse.koreamed.org</a> Internet Source	<1 %
14	Baodong Qin, Tingting Wei, Lili Wang, Ning Ma, Qingqin Tang, Yan Liang, Zaixing Yang, Lin Zhou, Renqian Zhong. "Decreased expression of TIPE2 contributes to the hyperreactivity of	<1 %



monocyte to Toll-like receptor ligands in primary biliary cirrhosis", Journal of Gastroenterology and Hepatology, 2016

Publication

15

[journals.lww.com](http://journals.lww.com)

Internet Source

<1 %

16

[www.oncotarget.com](http://www.oncotarget.com)

Internet Source

<1 %

17

Daisuke Suzuki. "In situ hybridization studies of matrix metalloproteinase-3, tissue inhibitor of metalloproteinase-1 and type IV collagen in diabetic nephropathy", Kidney International, 07/1997

Publication

<1 %

18

Hao Jin, Hak Sung Kim, Geom Seog Seo, Sung Hee Lee. "A new chalcone derivative, 3-phenyl-1-(2,4,6-tris(methoxymethoxy)phenyl)prop-2-yn-1-one), inhibits phorbol ester-induced metastatic activity of colorectal cancer cells through upregulation of heme oxygenase-1", European Journal of Pharmacology, 2018

Publication

<1 %

19

Maurizio BEVILACQUA. "Effect of nimesulide on the serum levels of hyaluronan and stromelysin-1 in patients with osteoarthritis: a pilot study", International Journal of Clinical Practice, 10/2004

<1 %

20

[hdl.handle.net](https://hdl.handle.net)

Internet Source

<1 %

---

21

[onlinelibrary.wiley.com](https://onlinelibrary.wiley.com)

Internet Source

<1 %

---

22

[www.tandfonline.com](https://www.tandfonline.com)

Internet Source

<1 %

---

23

Bhavani Kowtharapu, Radovan Murín, Anselm Jünemann, Oliver Stachs. "Role of Corneal Stromal Cells on Epithelial Cell Function during Wound Healing", International Journal of Molecular Sciences, 2018

Publication

<1 %

---

24

Kosta J. Popović, Dušica J. Popović, Dejan Miljković, Jovan K. Popović, Dušan Lalošević, Ivan Čapo. "Co-treatment with nitroglycerin and metformin exhibits physicochemically and pathohistologically detectable anticancer effects on fibrosarcoma in hamsters", Biomedicine & Pharmacotherapy, 2020

Publication

<1 %

---

25

[bmcevolbiol.biomedcentral.com](https://bmcevolbiol.biomedcentral.com)

Internet Source

<1 %

---

26

[journals.sagepub.com](https://journals.sagepub.com)

Internet Source

<1 %

---

27

[pesquisa.bvsalud.org](https://pesquisa.bvsalud.org)

Internet Source

<1 %

28

[www.hindawi.com](http://www.hindawi.com)

Internet Source

<1 %

29

[www.nature.com](http://www.nature.com)

Internet Source

<1 %

30

T. Alpagot. "Longitudinal evaluation of GCF MMP-3 and TIMP-1 levels as prognostic factors for progression of periodontitis", *Journal Of Clinical Periodontology*, 4/2001

Publication

<1 %

31

"1-A6: Cell and Molecular Biology 2", *Respirology*, 2013

Publication

<1 %

Exclude quotes  On

Exclude matches  Off

Exclude bibliography  On

# Downregulation of The Expression of MMP-3 and TIM-1 By Metformin Regardless of TNF-alfa Level in an In Vitro Lens Capsule Fibrosis Model

---

GRADEMARK REPORT

---

FINAL GRADE

**/100**

GENERAL COMMENTS

**Instructor**

---

PAGE 1

---

PAGE 2

---

PAGE 3

---

PAGE 4

---

PAGE 5

---