

Surface ultrastructure of Blastocystis sp. isolated from cattle

by Endang Suprihati

Submission date: 08-Oct-2021 11:03AM (UTC+0800)

Submission ID: 1668355918

File name: rface_ultrastructure_of_Blastocystis_sp.isolated_from_cattle.pdf (303.1K)

Word count: 3439

Character count: 19075

Surface ultrastructure of *Blastocystis* sp. isolated from cattle

NI KOMANG APRILINA WIDISUPUTRI¹, NUNUK DYAH RETNO LASTUTI¹, ENDANG SUPRIHATI¹,
POEDJI HASTUTIEK¹, HANI^{1,32}, MERIASTUTI², MUFASIRIN^{1,3}, HENI PUSPITASARI³,
LUCIA TRI SUWANTI^{1,3,*}

¹Department of Veterinary Parasitology, Faculty of Veterinary Medicine, Universitas Airlangga. Jl. Mulyorejo, Kampus C Unair, Surabaya 60115, East Java, Indonesia

²Department of Veterinary Patology, Faculty of Veterinary Medicine, Universitas Airlangga. Jl. Mulyorejo, Kampus C Unair, Surabaya 60115, East Java, Indonesia

³Institute of Tropical Disease, Universitas Airlangga. Jl. Mulyorejo, Kampus C Unair, Surabaya, 60115, East Java, Indonesia.
Tel./fax.: +62 31-5992785. *email: lucia-t-s@fkh.unair.ac.id

Manuscript received: 4 January 2021. Revision accepted: 26 February 2021.

Abstract. Widisuputri NKA, Lastuti NDR, Suprihati E, Hastutie P, Plumeriastuti H, Mufasirin, Puspitasari H, Suwanti LT. 2021. Surface ultrastructure of *Blastocystis* sp. isolated from cattle. *Biodiversitas* 22: 1514-1518. *Blastocystis* is a protozoan parasite commonly detected in the intestinal tract of humans and various animals that causes zoonotic blastocystosis. The pathogenic potential of *Blastocystis* is still being evaluated, some *Blastocystis* sp are completely pathogenic, while others can be considered commensal and hypothetical, related to the role of the surface coat of *Blastocystis* sp. This study aimed to compare the surface ultrastructure of *Blastocystis* sp. in cattle with diarrhea and non diarrhea by Scanning Electron Microscope (SEM). Four *Blastocystis* sp. isolates were selected from the faeces of four positives cattle which consisted of two diarrhea and two non-diarrhea cattle. The result showed that *Blastocystis* sp. in cattle appeared in round shape and reproduced by binary fission. The surface cell of *Blastocystis* sp. isolates from diarrhea cattle had a rough surface while organism of non diarrhea cattle isolates was very smooth. Bacteria were seen attached to the surface of *Blastocystis* sp. from diarrhea cattle faeces. In conclusion, the features of the surface structure of *Blastocystis* sp. correlated with symptomatic appearance. The surface structure of *Blastocystis* sp. isolates from cattle with diarrhea was rougher than non diarrhea.

Keywords: *Blastocystis*, cattle with diarrhea, scanning electron microscope, surface structure

INTRODUCTION

Blastocystis sp. is a protozoan parasite that commonly found in the intestinal tract of humans and varied of animals and its infection caused blastocystosis (Wawrzyniak et al. 2013). Animals that were infected include mammals, birds, amphibians, and reptiles (Cian et al. 2017). In recent years, researches on the identification and prevalence of *Blastocystis* sp. both in humans and animals have been reported throughout the world (Lee et al. 2012) and several studies have shown that *Blastocystis* infection is zoonotic, this is evidenced by the discovery of the same subtype (ST) in humans and animals (Osman et al. 2016). *Blastocystis* infection is a waterborne or foodborne disease, and oral transmission occurs due to ingestion of the infective stage, cysts, which contaminate water and food (Lee et al. 2012). The prevalence of *Blastocystis* infection in humans in developing countries is significantly higher than in developed countries (El Safadi et al. 2016). Poor hygiene practices, close contact with animals, and consumption of contaminated food or water are factors in the high prevalence of blastocystosis in people (Wawrzyniak et al. 2013). Symptoms of blastocystosis are non-specific such as diarrhea, abdominal pain, constipation, flatulence, fatigue, urticaria and skin rash (Parija and Jeremiah 2013; Wawrzyniak et al. 2013) and most of cases are asymptomatic (Yason and Tan 2018). Some researchers found *Blastocystis* sp both in the host

with or without clinical symptoms, this is the reason why the pathogenicity of *Blastocystis* is still being (Roberts et al. 2014; Skotarczak 2018). However, some researchers point to serious consequences due to this parasite infection, in which, *Blastocystis* sp. was known to play a role in irritable bowel syndrome (IBS) (Ragavan et al. 2014; 2015) and induced precancerous polyp formation (Kumarasamy et al. 2017).

Diagnose of *Blastocystis* sp. generally based on the morphologically parasite in faeces by direct examination using the light microscope or by *in vitro* cultivation method. *Blastocystis* sp. is morphologically in the form of vacuoles, granular, amoeboid, or cysts (Wawrzyniak et al. 2013), but the morphology of *Blastocystis* sp. isolates from humans and animals, is difficult to be distinguished only by light microscopy examination, as they were morphologically similar (Zhang et al. 2012). Previous study by Suwanti et al. (2020a) reported that the morphology of *Blastocystis* sp. in cattle were varied widely in size with 2.78 – 35.35 µm (average 14.76 µm) in which 100% of the cattle samples were positive for *Blastocystis* however differentiation between diarrhea and non-diarrheal cattle were not considered.

Examination using an electron microscope recently shed new light on the morphology of parasites, one of which by using Scanning Electron Microscope (SEM). Using SEM aimed to obtain detailed information on the morphology and topography of the cell surface of a

microorganism (de Souza and Attias 2018). Research on surface ultrastructure *Blastocystis* sp. using SEM has been reported in humans, monkeys, pigs, chickens, rats and cockroaches which have varying differences in their surface coat (Cassidy et al. 1994; Haziqah et al. 2017). According to Yason and Tan (2018), electron micrographs showed variations in the surface coats from the different *Blastocystis* isolates and these differences could be attributed to differences in the pathogenic potential of the *Blastocystis* subtype. It has also been proven by Ahmed et al. (2019) that the surface ultrastructure of *Blastocystis* sp. was rougher in isolates from patients with colorectal carcinoma.

Until now, the research of surface ultrastructure of *Blastocystis* sp. in cattle has not been reported. As already mentioned above, the results of previous studies showed the morphology of *Blastocystis* in cattle with diarrhea and no diarrhea were the same. The aim of this study was to compare the surface structure of *Blastocystis* from cultured faeces samples of cattle with (symptomatic) and no diarrhea (asymptomatic) using SEM.

MATERIALS AND METHODS

Ethical approval

Ethical approval for this study was granted by the Animal Care and Use Committee of the Faculty of Veterinary Medicine, Universitas Airlangga (approval number: 2.KE.095.05.2019)

Isolate of *Blastocystis* sp

Isolate was *Blastocystis* sp. isolated from the feces of Madura cattle in Kamal and Socah, Bangkalan, Madura, Indonesia. Isolation was carried out in 2018, by taking samples of fresh feces that had just fallen to the ground. A total of 108 samples were examined. The presence of *Blastocystis* sp. in feces was detected by both morphologically and genetically based on the 18S rRNA gene (Suwanti et al. 2020b). The Isolate were stored in the Department of Veterinary Parasitology, Faculty of Veterinary Medicine, Universitas Airlangga.

In Vitro Cultivation

Four *Blastocystis* sp. isolates were subcultured from four positive cattle samples consisting of two diarrhea and two non-diarrhea cattle. Each sample was cultured in RPMI 1640 medium (CP19-2763, Caporn Scientific, Germany) and incubated at 37°C for 3 days. The growth of *Blastocystis* sp. in culture was observed morphologically under a light microscope (Nikon® E100, Japan) at 400X magnification. Microscope was connected to a camera (Optilab® MTN001, Indonesia) to capture the image of the parasites. The supernatant of the culture medium was inserted into the tube and centrifuged at 1500 rpm for 10 minutes. Supernatant was removed and pellets was resuspended with phosphate buffered saline (PBS) and stored for SEM observation.

Scanning Electron Microscope (SEM)

Cell of *Blastocystis* sp. were washed with PBS pH 7 for three times by centrifugation. It was centrifuged with speed 3000 rpm for 5 minutes. Then each sample was fixed by adding 2.5% glutaraldehyde and post-fixation with 1% osmium tetroxide. The isolate was mounted on a polycarbonate membrane and dehydrated using ethanol in sequence 30%, 50%, 70%, 80%, 90%, and 100%. Each ethanol series was done for 15 minutes and the last step was added with amyl acetate. Critical Point Drying (CPD) was performed using carbon dioxide, then the specimen was coated using a gold coating, and observed using SEM (Ragavan et al. 2014). SEM images were captured at the Faculty of Mechanical Engineering, Institut Teknologi Sepuluh Nopember (ITS) Surabaya.

RESULTS AND DISCUSSION

Morphology of *Blastocystis* in medium culture

On culture media *Blastocystis* sp. most of the vacuolar forms (Figure 1). In previous study, it was found that the diameter of *Blastocystis* sp. in cattles was varied widely with ranged about 2.78 to 35.35 µm (average 14.76µm) and the size of *Blastocystis* sp. in culture was smaller than in fresh stool (Suwanti et al. 2020a). The main morphology of *Blastocystis* sp. has four forms: vacuole, granular, amoeboid and cyst form (Wawrzyniak et al. 2013) and the vacuolar form was the most common cell form found in cultures (Natalia et al. 2018). Under a light microscope, the morphology of *Blastocystis* sp. from healthy cattle (without diarrhea) and diarrhea cattle could not be distinguished. According to Tan et al. (2008), *Blastocystis* poses considerable challenges for diagnostic laboratories. The morphology of *Blastocystis* sp. is difficult to distinguish by using light microscopy only (Zhang et al. 2012). Yanson and Tan (2018) using an electron microscope show variations in the membrane surface from three *Blastocystis* isolates and these differences could be associated with the differences in the pathogenic potential of *Blastocystis* subtypes.

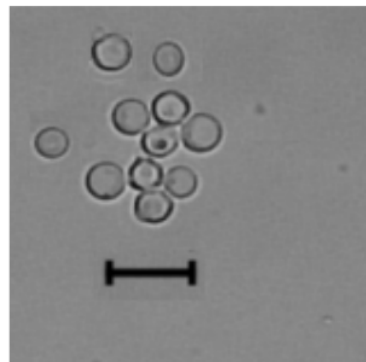


Figure 1. *Blastocystis* sp. in cattle in medium culture. Bar 10 µm

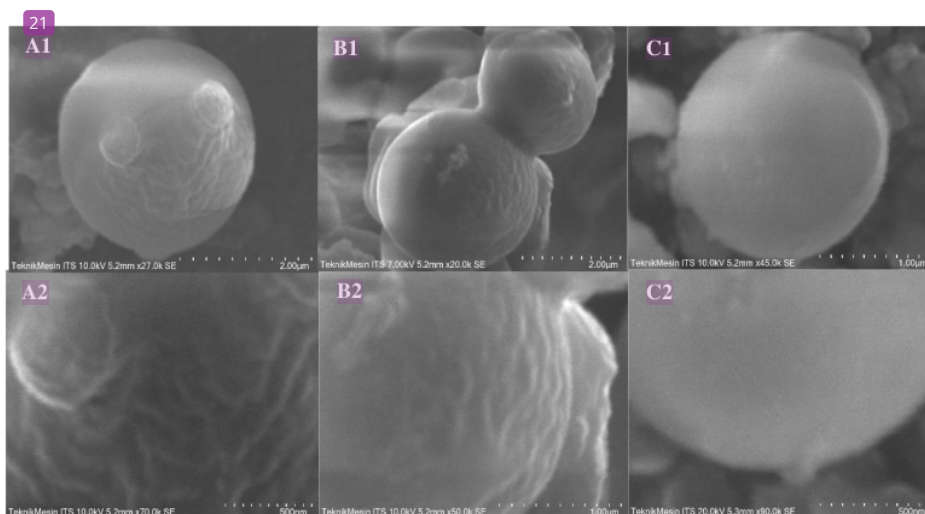


Figure 2. The scanning electron micrograph showing the cell surface of *Blastocystis* sp. isolated from the *in vitro* culture. A and B *Blastocystis* sp. from faeces of cattle with diarrhea. C. *Blastocystis* sp. from faeces of asymptomatic cattle. Red arrows are daughter cell. Black arrows are bacteria.

Appearance of the surface structure of *Blastocystis* sp. Using SEM

In this decade, SEM was used widely in the morphological studies of a cell based on the structural surface of the cell, including *Blastocystis* sp. (Boreham and Stenzel 1993; Zaman et al. 1999; Tan et al. 2008; Zhang et al. 2012; Ragavan et al. 2014; Ahmed et al. 2019). SEM revealed the external morphological shape of the cyst and various surface coat structures of the parasite (Zhang et al. 2012). The surface coat was a kind of fibrous substance in varying appearance, rough or fine, which adhere to the surface of the *Blastocystis* cells (Elsayad et al. 2019). This study is the first report on the surface structure of *Blastocystis* sp. in cattle, both in symptomatic (diarrhea) and asymptomatic cattle.

In this study, it was found that *Blastocystis* sp. in cattle appeared in round shape. This result was similar with the morphology of *Blastocystis* in human which presented by Boreham and Stenzel (1993), generally the shape of *Blastocystis* from *in vitro* culture were spherical in shape. Round shape was also found by Ahmed et al. (2019) in addition to other forms, oval and irregular. *Blastocystis* cells often possess one or two nuclei, and occasionally, quadrinucleate cells and cells possessing numerous nuclei have been reported (Zhang et al. 2008). According to Zhang et al. (2007), there were five modes of reproduction, namely, binary fission, endodyogeny, plasmotomy, budding and schizogeny. In this study, the reproduction of *Blastocystis* sp. is shown in Figures 2.A1 and 2.B1. Figure 2.A1 was probably the initial stage of plasmotomy reproduction. Plasmotomy reproduction occurred during the stage of vacuolar form, which a daughter cell came into being by forming a finger-like cytoplasmic extension from the cellular surface of the mother vacuolar cell (Zhang et al.

2007). Figure 2.B1, *Blastocystis* sp. was seen undergo binary fission similarly reported by Elsayad et al. (2019) and Mehlhorn et al. (2012).

The surface cell of *Blastocystis* sp. isolates from diarrheal cattle had a rough surface as shown in Figure 2.A and 2.B. Whereas organism of non diarrhea cattle isolates was very smooth (Figure 2.C). Elsayad et al. (2019), using SEM micrographs shown different outer morphology of *Blastocystis* in human covered by rough or smooth surface coat, but there was no further explanation regarding the differences. The smooth surface structure of *Blastocystis* sp. isolates from non diarrheal cattle is similar to *Blastocystis* in asymptomatic human isolates as described previously by Suresh et al. (1994). The rough surface cell illustration in diarrheal cattle in this study supported the results of a study previously reported by Boreham and Stenzel (1993) that rough morphology of cells was found on isolates of *Blastocystis* from a diarrhea patient. This cell surface structure may be related to the pathogenicity of organisms related to the symptoms shown. It is suggested that a rough surface *Blastocystis* is more pathogenic than smooth surface and the features of the surface structure of *Blastocystis* sp. correlated with symptomatic appearance. Tan et al. (2008), Ragavan et al. (2014) and Ahmed et al. (2019) stated that there were differences in the surface ultrastructure of *Blastocystis* isolated from human derived from symptomatic and asymptomatic persons; *Blastocystis* from symptomatic isolates have coarser surface structure while asymptomatic isolates have a smooth surface structure. Rougher with excessive indentation surface was drawn from isolates derived from suffering patients IBS (Ragavan et al. 2014) and colorectal carcinoma (Ahmed et al. 2019).

Several studies using SEM to observed *Blastocystis* have indicated that the surface coat is associated with bacteria. The surface coat contains a variety of carbohydrates and has been postulated to play a role in trapping and degrading bacteria for nutrition (Tan 2008). In this study, bacteria were seen attached to the surface of *Blastocystis* sp. from cattle with diarrhea (Figure 2.B₁). The attachment of bacteria to the surface of *Blastocystis* isolated from human samples had been confirmed by SEM studies. Attached bacteria on the surface of *Blastocystis* have been seen in close association with the surface coat and often causing an indentation (Boreham and Stenzel 1993). Although some surface coat functions are not yet known exactly, it is thought to be a mechanism for trapping bacteria for nutritional purposes and attachment to the intestinal epithelial lining (Zaman et al. 1999) and according to Yason and Tan (2018), the surface coat of *Blastocystis* sp. associates with potentially pathogenic of *Blastocystis* subtype. There was a hypothesis that surface coat protects the organism from innate host immune response as well as contribute to greater adhesion during colonization (Yason and Tan 2018).

In conclusion, by SEM, most of *Blastocystis* sp. isolated from the *in vitro* cultivation method of cattle faeces appeared in round shape with and reproduced by binary fission. Meanwhile, the surfaces cell of *Blastocystis* sp. isolates from cattle with diarrhea had a rough surface while *Blastocystis* isolated from asymptomatic cattle isolates were having very smooth surface. Bacteria were seen attached to the surface of *Blastocystis* sp. from cattle with diarrhea. The features of the surface structure of *Blastocystis* sp. correlated with symptomatic appearance. The surface structure of *Blastocystis* sp. isolates from cattle with diarrhea was rougher than non diarrhea. Research on the determinants of the pathogenicity of *Blastocystis* is still needed.

ACKNOWLEDGEMENTS

The authors wish to express gratitude to Directorate General Research and Development Strengthening of Ministry of Research, Technology and Higher Education, for financial support with research grant through the Budget Execution Checklist 2019-2020.

REFERENCES

- Ahmed MM, Habib FS, Saad GA, El Naggat HM. 2019. Surface ultrastructure, protein profile and zymography of *Blastocystis* species isolated from patients with colorectal carcinoma. *J Parasit Dis* 43 (2): 294-303. DOI: 10.1007/s12639-019-01092-9.
- Boreham PFL, Stenzel DJ. 1993. *Blastocystis* in humans and animals: morphology, biology, and epizootiology. *Adv Parasitol* 32: 1-70. DOI: 10.1016/S0065-308X(08)60206-7.
- Cassidy MF, Stenzel DJ, Boreham PF. 1994. Electron microscopy of surface structures of *Blastocystis* sp. from different hosts. *Parasitol Res* 80 (6): 505-511. DOI: 10.1007/BF00932698.
- Cian A, El Safadi D, Osman M, Moriniere R, Gantois N, Benamrouz-Vanneste S, Delgado-Viscogliosi P, Guyot K, Li LL, Monchy S, Noël C. 2017. Molecular epidemiology of *Blastocystis* sp. in various animal groups from two french zoos and evaluation of potential zoonotic risk. *PLoS ONE* 12 (1): e0169659. DOI: 10.1371/journal.pone.0169659.
- de Souza W, Attias M. 2018. New advances in scanning microscopy and its application to study parasitic protozoa. *Exp Parasitol* 190: 10-33. DOI: 10.1016/j.exppara.2018.04.018.
- Elsayad MH, Tolba MM, Argiah HA, Gaballah A, Osman MM, Mikhael IL. 2019. Electron microscopy of *Blastocystis hominis* and other diagnostic approaches. *J Egypt Soc Parasitol* 49 (2): 373-380. DOI: 10.21608/jesp.2019.68145.
- El Safadi D, Cian A, Nourisson C, Pereira B, Morelle C, Bastien P, Bellanger AP, Botterel F, Candolfi E, Desoubreux G, Lachaud L. 2016. Prevalence, risk factors for infection and subtype distribution of the intestinal parasite *Blastocystis* sp. from a large-scale multi-center study in France. *BMC Infect Dis* 16 (1): 451. DOI: 10.1186/s12879-016-1776-8.
- Haziqah FMT, Asyiqin NMN, Khalid MKN, Suresh K, Rajamanikam A, Chandrawathani P, Mohd Zain SN. 2017. Short Communication: Current status of *Blastocystis* in cockroaches. *Trop Biomed* 34 (3): 741-745.
- Kumarasamy V, Kuppasamy UR, Jayalakshmi P, Samudi C, Ragavan ND, Kumar S. 2017. Exacerbation of colon carcinogenesis by *Blastocystis* sp. *PLoS ONE* 12 (8): e0183097. DOI: 10.1371/journal.pone.0183097.
- Lee LI, Chye TT, Karmacharya BM, Govind SK. 2012. *Blastocystis* sp.: waterborne zoonotic organism, a possibility. *Parasites Vectors* 5: 130. DOI: 10.1186/1756-3305-5-130.
- Mehlhorn H, Tan KSW, Yoshikawa H. 2012. *Blastocystis*: pathogen or passenger?: An evaluation of 101 years of research. Springer, Heidelberg Berlin.
- Natalia F, Suwanti LT, Suprihati E, Koesdarto S, Srianto P. 2018. Morphological detection of the intestinal parasite *Blastocystis* Sp. in fresh and cultured feces of pet Sugar Glider (*Petaurus Breviceps*) (Mammalia: Marsupialia: Petauridae) in Surabaya, Indonesia. *Philipp J Vet Med* 55 (S1): 91-96.
- Osman M, El Safadi D, Cian A, Benamrouz S, Nourisson C, Poirier P, Pereira B, Razakandrainibe R, Pinon A, Lambert C, Wawrzyniak I. 2016. Prevalence and risk factors for intestinal protozoan infections with *Cryptosporidium*, *Giardia*, *Blastocystis* and *Dientamoeba* among schoolchildren in Tripoli, Lebanon. *PLoS Neglected Trop Dis* 10 (3): e0004496. DOI: 10.1371/journal.pntd.0004496.
- Parija SC, Jeremiah SS. 2013. *Blastocystis*: Taxonomy, Biology and Virulence. *Trop Parasitol* 3 (1): 17-25. DOI: 10.4103/2229-5070.113894.
- Ragavan ND, Govind SK, Chye TT, Mahadeva S. 2014. Phenotypic variation in *Blastocystis* sp. ST3. *Parasites Vectors* 7 (404): 1-10. DOI: 10.1186/1756-3305-7-404.
- Ragavan ND, Kumar S, Chye TT, Mahadeva S, Shiaw-Hooi H. 2015. *Blastocystis* sp. in irritable bowel syndrome (IBS)-Detection in stool aspirates during colonoscopy. *PLoS ONE* 10 (9): e0121173. DOI: 10.1371/journal.pone.0121173.
- Roberts T, Stark D, Harkness J, Ellis J. 2014. Update on the pathogenic potential and treatment options for *Blastocystis* sp. *Gut Pathog* 6: 17. DOI: 10.1186/1757-4749-6-17.
- Skotarczak B. 2018. Genetic diversity and pathogenicity of *Blastocystis*. *Ann Agric Environ Med* 25 (3): 411-416. DOI: 10.26444/aaem/81315.
- Suresh K, Howe J, Chong SY, Ng GC, Ho LC, Loh AK, Ramachandran NP, Yap EH, Singh M. 1994. Ultrastructural changes during *in vitro* encystment of *Blastocystis hominis*. *Parasitol Res* 80: 327-335. DOI: 10.1007/BF02351875.
- Suwanti LT, Mufasirin, Lastuti NDR. 2020a. Molecular detection and morphological varied of *Blastocystis* sp in beef cattle in Siak Sri Indrapura Riau Indonesia. *Eco Environ Cons* 26 (April Suppl. Issue): S209- S212.
- Suwanti LT, Susana Y, Hastutiek P, Suprihati E, Lastuti ND. 2020b. *Blastocystis* spp. subtype 10 infected beef cattle in Kamal and Socah, Bangkalan, Madura, Indonesia. *Vet World* 13 (2): 231-237. DOI: 10.14202/vetworld.2020.231-237.
- Tan TC, Suresh KG, Smith HV. 2008. Phenotypic and genotypic characterization of *Blastocystis hominis* isolates implicates subtype 3 as a subtype with pathogenic potential. *Parasitol Res* 104: 85-93. DOI: 10.1007/s00436-008-1163-5.
- Wawrzyniak I, Poirier P, Viscogliosi E, Dionigia M, Texier C, Delbac F, Alaoui HE. 2013. *Blastocystis*, an unrecognized parasite: An overview of pathogenesis and diagnosis. *Ther Adv Infect Dis* 1(5): 167-178. DOI: 10.1177/2049936113504754.

- Yason JA, Tan KSW. 2018. Membrane surface features of *Blastocystis* Subtypes. Genes 9: 1-6. DOI: 10.3390/genes9080417.
- Zaman V, Howe J, Ng M, Goh TK. 1999. Scanning Electron Microscopy of the surface coat of *Blastocystis hominis*. Parasitol Res 85: 974-976. DOI: 10.1007/s004360050668.
- Zhang X, Qiao JY, Zhou XJ, Yao FR, Wei ZC. 2007. Morphology and reproductive mode of *Blastocystis hominis* in diarrhea and in vitro. Parasitol Res 101 (1): 43-51. DOI: 10.1007/s00436-006-0439-x.
- Zhang X, Zhang S, Qiao J, Wu X, Zhao L, Liu Y, Fan X. 2012. Ultrastructural insights into morphology and reproductive mode of *Blastocystis hominis*. Parasitol Res 110: 1165-1172. DOI: 10.1007/s00436-011-2607-x.

Surface ultrastructure of Blastocystis sp. isolated from cattle

ORIGINALITY REPORT

19%

SIMILARITY INDEX

13%

INTERNET SOURCES

17%

PUBLICATIONS

0%

STUDENT PAPERS

PRIMARY SOURCES

- 1 Lucia Tri Suwanti, Yuli Susana, Poedji Hastutiek, Endang Suprihati, Nunuk Dyah Retno Lastuti. "Blastocystis spp. subtype 10 infected beef cattle in Kamal and Socah, Bangkalan, Madura, Indonesia", *Veterinary World*, 2020
Publication 4%

- 2 cmr.asm.org
Internet Source 2%

- 3 X. Zhang, J. Y. Qiao, X. J. Zhou, F. R. Yao, Z. C. Wei. "Morphology and reproductive mode of *Blastocystis hominis* in diarrhea and in vitro", *Parasitology Research*, 2007
Publication 1%

- 4 Dionigia Meloni, Giovanna Sanciu, Philippe Poirier, Hicham El Alaoui et al. "Molecular subtyping of *Blastocystis* sp. isolates from symptomatic patients in Italy", *Parasitology Research*, 2011
Publication 1%

- 5 researchonline.lshtm.ac.uk

Internet Source

1 %

6

www.mysciencework.com

Internet Source

1 %

7

doaj.org

Internet Source

1 %

8

Robyn Nagel. "Are Blastocystis species clinically relevant to humans?", 'University of Queensland Library', 2016

Internet Source

1 %

9

pubmed.ncbi.nlm.nih.gov

Internet Source

1 %

10

ijicc.net

Internet Source

1 %

11

msptm.org

Internet Source

1 %

12

Sara Nemati, Mohammad Reza Zali, Paul Johnson, Hamed Mirjalali, Panagiotis Karanis. " Molecular prevalence and subtype distribution of sp. in Asia and in Australia ", Journal of Water and Health, 2021

Publication

<1 %

13

fahatan.unmul.ac.id

Internet Source

<1 %

14 Lei Deng, Yijun Chai, Ziyao Zhou, Haifeng Liu, Zhijun Zhong, Yanchun Hu, Hualin Fu, Chanjuan Yue, Guangneng Peng. "Epidemiology of sp. infection in China: a systematic review ", Parasite, 2019
Publication <1 %

15 peerj.com
Internet Source <1 %

16 scholarbank.nus.edu.sg
Internet Source <1 %

17 "Blastocystis: Pathogen or Passenger?", Springer Science and Business Media LLC, 2012
Publication <1 %

18 Vinoth Kumarasamy, Deepa Anbazhagan, Vetriselvan Subramaniyan, Shalini Vellasamy. "Blastocystis sp., Parasite Associated with Gastrointestinal Disorders: An Overview of its Pathogenesis, Immune Modulation and Therapeutic Strategies", Current Pharmaceutical Design, 2018
Publication <1 %

19 coek.info
Internet Source <1 %

20 eprints.um.edu.my
Internet Source <1 %

21

www.dovepress.com

Internet Source

<1 %

22

www.epu-eg.com

Internet Source

<1 %

23

www.researchsquare.com

Internet Source

<1 %

24

Jenny G. Maloney, Maria J. R. da Cunha, Aleksey Molokin, Márcia C. Cury, Monica Santin. "Next-generation sequencing reveals wide genetic diversity of Blastocystis subtypes in chickens including potentially zoonotic subtypes", Parasitology Research, 2021

Publication

<1 %

25

hdl.handle.net

Internet Source

<1 %

26

iopscience.iop.org

Internet Source

<1 %

27

journals.plos.org

Internet Source

<1 %

28

Ana Paula Oliveira-Arbex, Érica Boarato David, Semíramis Guimarães. "Blastocystis genetic diversity among children of low-income daycare center in Southeastern Brazil", Infection, Genetics and Evolution, 2018

Publication

<1 %

29

G.M. Arpitha, C. Sreekumar, Bhaskaran Ravi Latha, M. Vijaya Bharathi. "Prevalence and staining characteristics of Blastocystis isolates from food animals in Tamil Nadu", *Veterinary Parasitology: Regional Studies and Reports*, 2018

Publication

<1 %

30

Morteza Shams, Laya Shamsi, Alireza Sadrebazzaz, Ali Asghari, Roya Badali, Mostafa Omidian, Soheil Hassanipour. "A systematic review and meta-analysis on the global prevalence and subtypes distribution of Blastocystis sp. infection in cattle: A zoonotic concern", *Comparative Immunology, Microbiology and Infectious Diseases*, 2021

Publication

<1 %

31

T. Gaythri, K. Suresh, B. Subha, R. Kalyani. "Identification and Characterisation of Heat Shock Protein 70 in Thermal Stressed Blastocystis sp", *PLoS ONE*, 2014

Publication

<1 %

32

Submitted to Universitas Airlangga

Student Paper

<1 %

Exclude quotes Off

Exclude matches Off

Exclude bibliography On

Surface ultrastructure of Blastocystis sp. isolated from cattle

GRADEMARK REPORT

FINAL GRADE

/0

GENERAL COMMENTS

Instructor

PAGE 1

PAGE 2

PAGE 3

PAGE 4

PAGE 5
