

ISSN 0959-4134

WILEY-LISSONLINE
DISCOVER SOMETHING GREAT

JOURNAL OF BASIC AND CLINICAL PHYSIOLOGY AND PHARMACOLOGY

WILEY-LISSONLINE

DISCOVER SOMETHING GREAT

[LATEST ISSUE](#)[ISSUES](#)[RANKING](#)[SUBMIT](#)[EDITORIAL](#)

I

ef:

Federico II University, Naples, Italy)

:

Marra (Federico II University, Naples, Italy and University of Heidelberg, Germany)

Section Editors:

Internal Medicine: Giorgio Bosso (S. Maria delle Grazie Hospital, Pozzuoli, Naples)

Internal Medicine: Sylviane Bischof (prev. Ewelina Biskup; University Hospital Basel, Switzerland, Shanghai University of Health Sciences, Shanghai, China)

Internal Medicine: Pablo Demelo-Rodriguez (G. Marangon Hospital and Universidad Complutense, Madrid, Spain)

Internal Medicine: Antonio Valvano (Legnano Hospital, Legnano, Italy)

Internal Medicine: Theodor Voiosu (University of Bucharest, Bucharest, Romania)

Internal Medicine: Andrei Voiosu (University of Bucharest, Bucharest, Romania)

Internal Medicine: Lorenzo Falsetti (Azienda Ospedaliero-Universitaria "Ospedali Riuniti" di Ancona, Ancona, Italy)

Internal Medicine: Valeria Raparelli (University of Ferrara, Ferrara, Italy)

Internal Medicine: Ieva Ruza, (University of Riga, Riga, Latvia)

Internal Medicine: Mariarosaria De Luca (Federico II University, Naples)

Internal Medicine: Andrea Salzano (Glenfield General Hospital, University of Leicester, Leicester, UK)

Internal Medicine: Antonio Cittadini (Federico II University of Naples, Naples, Italy)

Internal Medicine: Salvatore Torrisi (University of Catania, Catania, Italy)

Internal Medicine: Leonardo Bencivenga (Federico II University, Naples, Italy)

Internal Medicine: Gilda Varricchi (Federico II University, Naples, Italy)

Internal Medicine: Domenico Sambataro (Artrorrea, Catania, Italy)

HEALTH SCIENCES: The 3rd JOINT CONFERENCE UNAIR – USM; Guest Editors: Suciati & Andang Miatmoko

July 2021

Issue of [Journal of Basic and Clinical Physiology and Pharmacology](#)

JOURNAL OVERVIEW

e June 25, 2021

ter

e: *i-ii*

[Download PDF](#)

il Articles

ires Authentication June 25, 2021

Illness of diabetes mellitus in Indonesia: a systematic review

Febriani Putri Peu Patty, Mufarrihah, Yunita Nita

ange: 285-295

[Cite this](#)

ires Authentication June 25, 2021

Media health interventions to improve diabetes mellitus patient outcome: a systematic

fian, Umi Athiyah, Yunita Nita

ange: 297-304

[Cite this](#)

ires Authentication June 25, 2021

Modeling pharmacokinetics – pharmacodynamics model of valproic acid syrup based on population pharmacokinetics parameter and seizure frequency in Indonesian pediatric patients

ng Prawira Nata Nugraha, Anita Purnamayanti, I Gusti Ngurah Made Suwarba, Nani Parfati

ange: 305-311

[Cite this](#)

ires Authentication June 25, 2021

Effects of quercetin on nicotine-induced reward effects in mice

Chalihan Rahmadi, Dian Suasana, Silvy Restuning Lailis, Dinda Monika Nusantara Ratri, Chrismawan Ardianto
Page: 327-333

[Cite this](#)

ires Authentication June 25, 2021

Quercetin ameliorates physical and psychological stress-induced depressive-like behavior in mice

Chalihan Rahmadi, Aniek Setiya Budiadin, I Nengah Budi Sumartha, Nurrahmi Nurrahmi, Mahardian I Khotib

Page: 335-340

[Cite this](#)

ires Authentication June 25, 2021

Validation and cross-cultural adaption of an instrument measuring patient's well-being using the WHOQOL-BREF in Indonesia

Fitria Julaelha, Umi Athiyah, Margarita Maria Maramis, Agus Sugianto, Andi Hermansyah

Page: 341-347

[Cite this](#)

ires Authentication June 25, 2021

Quercetin promotes behavioral recovery and biomolecular changes of melanocortin-4 receptor in ischemic stroke

Fitria Julaelha, Chrismawan Ardianto, Putri Anggreini, Aniek Setiya Budiadin, Dwi Setyawan, Junaidi Khotib

Page: 349-355

[Cite this](#)

ires Authentication June 25, 2021

Knowledge and attitudes of healthcare professionals on prescribing errors

Fitria Julaelha, Ketut Ernawati, Ida Ayu Alit Widhiartini, Endang Budiarti

Page: 357-362

[Cite this](#)

ires Authentication June 25, 2021

Inhibition of Ras and STAT3 activity of 4-(tert-butyl)-N-carbamoylbenzamide as antiproliferative agent in HER2-expressing breast cancer cells

Fitria Julaelha, Kirtishanti, Siswandono Siswodihardjo, I Ketut Suidiana, Desak G. A. Suprabawati, Aristika Dinarti

Page: 363-371

[Cite this](#)

Peer Review Authentication June 25, 2021

Analysis, ADMET predictions, molecular docking studies, and *in-vitro* anticancer activity of flavonoid compounds against A549 human lung cancer cells

Ika Sulistyowaty, Retno Widyowati, Galih Satrio Putra, Tutuk Budiati, Katsuyoshi Matsunami
Page: 385-392

[Cite this](#)

Peer Review Authentication June 25, 2021

Anticancer activity of naphthoquinone and its derivatives against breast cancer with HER2 positive: *in silico* studies and molecular docking and QSPR

Adelia Wulandari, Achmad Aziz Choiri, Fitria, Tri Widiandani
Page: 393-401

[Cite this](#)

Peer Review Authentication June 25, 2021

Assessment of patient understanding of their conventional cardiac medicines and herbal medicine/derived products: preliminary survey and interviews with selected community-dwelling hypertensive patients in the Philippines

Arif M. Azul, Trisha Michaela G. Arciga, Mary Angelie C. Ante, Danavin Gwyneth B. Berlin, Loise Françoise B. Banting, Samantha A. Reyes, Jashanjit Singh
Page: 403-413

[Cite this](#)

Peer Review Authentication June 25, 2021

Development and validation of the health belief model questionnaire for measuring medication adherence in the elderly with hypertension

Fitriatul Fithri, Umi Athiyah, Elida Zairina
Page: 415-419

[Cite this](#)

Peer Review Authentication June 25, 2021

Analysis of the side effect of QTc interval prolongation in the bedaquiline regimen in drug resistant tuberculosis patients

Ardhianto, Suharjono, Soedarsono, Umi Fatmawati
Page: 421-427

[Cite this](#)

Peer Review Authentication June 25, 2021

ires Authentication June 25, 2021

Analysis of matrix metalloproteinase-9 levels among acute heart failure patients with ACE inhibitors (Dr. Soetomo Regional General Hospital, Surabaya)

Fitri Kusumawati, Bambang Zubakti Zulkarnain, Muh Aminuddin, Umi Fatmawati

Page: 447-451

[Cite this](#)

ires Authentication June 25, 2021

Correlation between self-related adherence, asthma-related quality of life and control of symptoms in asthmatic patients

Fitri Kusumawati, Gesnita Nugraheni, Gusti Noorrizka Veronika Achmad, Arie Sulistyarini, Yunita Nita, Arief Iqbal Ahmad Amin

Page: 453-458

[Cite this](#)

ires Authentication June 25, 2021

Effectiveness of home pharmacy care (HPC) for hemodialysis patients with hypertension in lowering blood pressure

Fitri Kusumawati, Bambang Subakti Zulkarnain, Ivan Virnanda Amu

Page: 459-465

[Cite this](#)

ires Authentication June 25, 2021

Community knowledge and attitude in recognizing asthma symptoms and using medication during asthma attacks: a cross-sectional study

Fitri Kusumawati, Bindaria Mutmaina Prabawati, Alfian Nur Rosyid

Page: 467-472

[Cite this](#)

ires Authentication June 25, 2021

Effectiveness of anticoagulant therapy in patients with coronary artery disease

Fitri Kusumawati, Daniel Dwi Christiananta Salean, Didik Hasmono, Rudy Hartono, Meity Ardiana

Page: 473-478

[Cite this](#)

ires Authentication June 25, 2021

Association of FKBP5 polymorphism with asthma susceptibility in asthmatic patients

Fitri Kusumawati, Alsaffar, Haider Abdulhameed Alqaraghuli, Jabbar H. Yenzeel, Haider F. Ghazi

Page: 479-484

Peer Review Authentication June 25, 2021

Protective effect of ethanolic extract of sugarcane (*Saccharum officinarum* Linn.) leaves on DMBA-induced hyperplasia in lung parenchymal and colonic epithelial cells in DMBA-induced mice by administering *Andrographis paniculata* Nees extract using animal model

Septiya Budiati, Ilham Bagus Sagitaras, Ika Putri Nurhayati, Nismatun Khairah, Khoirotin Nisak, Irwan Junaidi Khotib

Page: 497-504

[Cite this](#)

Peer Review Authentication June 25, 2021

Effect of sodium diethylamine on the induction of inflammation of liver in mice

Paulidya Cahyani, Andang Miatmoko, Berlian Sarasitha Hariawan, Kusuma Eko Purwantari, Retno

Page: 505-510

[Cite this](#)

Peer Review Authentication June 25, 2021

Effect of *Echinometra mathaei* ethanol extract on the levels of MDA, ALT, and liver histopathology on tamol-induced hepatotoxicity in rats

Kresnamurti, Dita Nurlita Rakhma, Amidasari Damayanti, Septiyan Dwi Santoso, Enggar Restrya, Ladinata, Iwan Sahrial Hamid

Page: 511-516

[Cite this](#)

Peer Review Authentication June 25, 2021

Development, characterization, molecular docking, and *in vivo* skin penetration of coenzyme Q10 structured lipid carriers using tristearin and stearyl alcohol for dermal delivery

Dewi Aryani, Siswandono Siswodihardjo, Widji Soeratri, Nadia Fitria Indah Sari

Page: 517-525

[Cite this](#)

Peer Review Authentication June 25, 2021

Protective effect of *Camellia sinensis* (green tea) with its active compound EGCG on neuronal cell apoptosis in *Rattus norvegicus* middle cerebral artery occlusion (MCAO) model

Sh Machin, Ramidha Syaharani, Imam Susilo, Muhammad Hamdan, Dyah Fauziah, Djoko Agus Pui

Page: 527-531

[Cite this](#)

Peer Review Authentication June 25, 2021

Protective effect of ethanolic extract of sugarcane (*Saccharum officinarum* Linn.) leaves

Peer Review Authentication June 25, 2021

Effect of various high-fat diet on liver histology in the development of NAFLD models in

Lilian Rahmadi, Ahmad Dzulfikri Nurhan, Eka Dewi Pratiwi, Devita Ardina Prameswari, Sisca Melanimo, Khoirotin Nisak, Junaidi Khotib

Page: 547-553

[Cite this](#)

Peer Review Authentication June 25, 2021

Preparation and characterization of bovine hydroxyapatite-gelatin-alendronate scaffold cross-linked by glutaraldehyde for bone regeneration

Fitriyana, Aniek Setiya Budiadin, Ferdiansyah Mahyudin, Junaidi Khotib

Page: 555-560

[Cite this](#)

Peer Review Authentication June 25, 2021

Effect of related quality of life among postmenopausal woman with hormone responsive HER-2/neu in Indonesia

Fitriyana, Tri Murti Andayani, Dwi Endarti, Kartika Widayati Taroeno-Hariadi

Page: 561-565

[Cite this](#)

Peer Review Authentication June 25, 2021

Effect of differences in the blood glucose type 2 diabetes patients with combination rapid and long acting insulin therapy

M. N. Ratri, Arina D. Puspitasari, Cahyo W. Nugroho, Budi Suprapti, Suharjono, Christopher P. Alder

Page: 567-570

[Cite this](#)

Peer Review Authentication June 25, 2021

Effect of variation of dietary iron intake and serum iron with thyroid stimulating hormone (TSH) and free thyroxine (FT4) levels in adult hyperthyroid patients

Fitriyana, Harjantini, Yulia Lanti Retno Dewi, Diffah Hanim, Ida Nurwati

Page: 571-576

[Cite this](#)

Peer Review Authentication June 25, 2021

Effect of pillbox use and education by pharmacist toward medication adherence in diabetic patients in a Primary Health Care Center in Mataram

Fitriyana, Ita Andanalusia, Yunita Nita, Umi Athiyah

Page: 577-582

[Cite this](#)

Peer Review Authentication June 25, 2021

Antipyretic and antipyrretic effects of Maja (*Crescentia cujete* L.) in fever-induced mice
Pratiwi, Munawarohthus Sholikha, Asniatul Ania, Ika Maruya Kusuma
Page: 595-601

[Cite this](#)

Peer Review Authentication June 25, 2021

Effect of Maja (*Crescentia cujete* L.) on kidney function and serum electrolyte in children with tumor lysis syndrome and risk of TLS
Pratiwi, Claudia Tiffany, I. Dewa Gede Ugrasena, Mariyatul Qibtiyah
Page: 603-609

[Cite this](#)

Peer Review Authentication June 25, 2021

Utilization study and cost analysis of adult β -thalassemia major patient therapy at Dr. Soedono Hospital Surabaya
Qatrunnada, Suharjono, Siprianus Ugroseno Yudho Bintoro, Siti Wahyuni
Page: 611-616

[Cite this](#)

Peer Review Authentication June 25, 2021

Effect of hyperbaric oxygen on platelet aggregation in noninsulin-dependent diabetes mellitus (NIDDM)
Pratiwi Widiyanti, Purnomo Suryohudoyo
Page: 617-621

[Cite this](#)

Peer Review Authentication June 25, 2021

Stability and chemical formation of loratadine-succinic acid and its improved solubility
Pratiwi Widiyanti, Firdaus Rendra Adyaksa, Hanny Lystia Sari, Diajeng Putri Paramita, Retno Sari
Page: 623-630

[Cite this](#)

Peer Review Authentication June 25, 2021

Effect of chondroitin sulfate to bone healing indicators and compressive strength
Pratiwi Widiyanti, Vibowo, Prihartini Widiyanti, Syaifullah Asmiragani
Page: 631-635

[Cite this](#)

Peer Review Authentication June 25, 2021

Effectiveness and irritability study of the chitosan – Aloe vera spray gel as wound healing

Retno Sri Wahid, Retno Sari, Esti Hendradi, Septiani Septiani

Page: 651-656

[Cite this](#)

Peer Review Authentication June 25, 2021

Effectiveness of citicoline in pediatric patients with refractive amblyopia in Surabaya, East Java

Retno Sri Wahid, Bambang Subakti Zulkarnain, Fitri Amalia Siswanto

Page: 657-661

[Cite this](#)

Peer Review Authentication June 25, 2021

Thermodynamic study of p-methoxycinnamic acid inclusion complex formation, using cyclodextrin and hydroxypropyl- β -cyclodextrin

Fitri Amalia Siswanto, Adiartuti, Noorma Rosita, Juni Ekowati, Achmad Syahrani, Toetik Ariyani, M. Ainur Rifqi

Page: 663-667

[Cite this](#)

Peer Review Authentication June 25, 2021

Effect of chitosan type and drug-chitosan ratio on physical characteristics and release profile of ibuprofen microparticles prepared by spray drying

Fitri Amalia Siswanto, Ahmad A. S. Rijal, Hanah Masitah, Fanny Purvitasari, Retno Sari

Page: 669-673

[Cite this](#)

Peer Review Authentication June 25, 2021

Maximum dose and duration in the therapy single use methotrexate to achieve remission in rheumatoid arthritis patients through disease activity score 28 (DAS28)

Fitri Amalia Siswanto, Achmad, Tika Yasmin Rahmayanti, Bagus Putu Putra Suryana

Page: 675-680

[Cite this](#)

Peer Review Authentication June 25, 2021

Knowledge, attitudes, and practices (KAP) towards COVID-19 among university students in Indonesia

Peer Review Authentication June 25, 2021

Effect of the use of antibiotics profile and factors of surgical site infections study on digestive system surgery

Pratiwi Sulita, Suharjono, Kuntaman, Mohammad Akram

Page: 693-700

[Cite this](#)

Peer Review Authentication June 25, 2021

Effect of internal transcribed spacer (ITS-2) as genetic marker for molecular characterization of *Sarcoptes scabiei* in rabbits from several areas of East Java, Indonesia

Dyah Retno Lastuti, Nur Rusdiana, Poedji Hastutiek

Page: 701-705

[Cite this](#)

Peer Review Authentication June 25, 2021

Effect of gossypetin derivatives based on naturally occurring flavonoid in *Hibiscus sabdariffa* on molecular docking as antibacterial agents

N. Diah, Isnaeni, Shabrina W. Hidayati, Bambang T. Purwanto, Siswandono

Page: 707-714

[Cite this](#)

Peer Review Authentication June 25, 2021

Effect of new targeting agents against GAPDH receptor for antituberculosis drug delivery

Amad Amirul Asyraf Noh, Siti Sarah Fazalul Rahiman, Habibah A Wahab, Amirah Mohd Gazzali

Page: 715-722

[Cite this](#)

Peer Review Authentication June 25, 2021

Effect of red passion fruit (*Passiflora edulis* Sims.) fermentation time on its activity against Methicillin-Resistant (ESBL) *Escherichia coli* and Methicillin-Resistant *Staphylococcus aureus* (MRSA)

Fitria Nurrosyidah, Ni Made Mertaniasih, Isnaeni

Page: 723-727

[Cite this](#)

Peer Review Authentication June 25, 2021

Effect of probiotic use on acute respiratory tract infection nonpneumonia and nonspecific diarrhea in primary Health Care Centre in Banjarbaru City, South Kalimantan, Indonesia

Fitriestya Wardani, Suharjono, Kuntaman, Agus Widjaja

Page: 728-735

Peer Review Authentication June 25, 2021

Effect of gyrA gene mutation in clinical isolate of levofloxacin resistant *Escherichia coli*

Wisma Fahmi, Suharjono, Kuntaman

Page: 751-754

[Cite this](#)

Peer Review Authentication June 25, 2021

Microbial activity of *Centella asiatica* and *Gigantochloa apus*

daliana

Page: 755-759

[Cite this](#)

Peer Review Authentication June 25, 2021

Related problems of antibiotic use in gastroenteritis related to patient therapy outcome at Universitas Gadjah Mada Hospital

Pratiwiarniawati, Nanang Munif Yasin, Farida Aulia, Gidfrie Vinanda Krisha

Page: 761-766

[Cite this](#)

Peer Review Authentication June 25, 2021

Impact of suitability of empirical antibiotics use on therapeutic outcome of respiratory tract infection on patients at inpatient wards of Universitas Gadjah Mada Academic Hospital

Pratiwiarniawati, Nanang Munif Yasin, Safina Nur Azizah, Silvia Ayu Purbaningtyas

Page: 767-771

[Cite this](#)

Peer Review Authentication June 25, 2021

Effect of rpoB profile mutation in clinical isolate of rifampicin-resistant *Staphylococcus aureus*

Wisma Fahmi, Suharjono, Kuntaman

Page: 773-776

[Cite this](#)

Peer Review Authentication June 25, 2021

Pharmacological side effect analysis of linezolid in MDR-TB patients with individual therapy

Yusuf Indra Pratama, Bambang Subakti Zulkarnain, Soedarsono, Umi Fatmawati

Page: 777-781

[Cite this](#)

Peer Review Authentication June 25, 2021

in silico docking studies of *Nigella sativa* L and *Curcuma xanthorrhiza* Roxb secondary metabolites with histamine N-methyltransferase with their ADMET prediction

Dzulfikri Nurhan, Maria Apriliani Gani, Aniek Setiya Budiadin, Siswandono Siswodihardjo, Junaidi
Page range: 795-802

[Cite this](#)

Peer Review Authentication June 25, 2021

Antioxidant activity of compounds with antiosteoporosis activity in *Chrysophyllum cainito* L. leaves through in silico approach

Ma'arif, Hilwa Fitri, Nisfatul Lailatus Saidah, Luqman Alfani Najib, Achmad Hamdan Yuwafi, Riahani Dwi Atmaja, Fidia Rizkiah Inayatillah, Meilina Ratna Dianti, Hening Laswati, Mangestuti Agil
Page range: 803-808

[Cite this](#)

Peer Review Authentication June 25, 2021

Antioxidant activity of phyllanthin and hypophyllanthin, the isolated compounds of *Phyllanthus niruri* inhibit protease activity of corona virus (COVID-19) through in silico approach

Dzikri Marhaeny, Aty Widyawaruyanti, Tri Widiandani, Achmad Fuad Hafid, Tutik Sri Wahyuni
Page range: 809-815

[Cite this](#)

Peer Review Authentication June 25, 2021

Antimalarial activity of *Albizia sumatranum* stem bark exhibited antimalarial activity by Lactate Dehydrogenase inhibition

Mumewu, Fendi Yoga Wardana, Hilkatul Ilmi, Adita Ayu Permanasari, Achmad Fuad Hafid, Aty Widyawaruyanti
Page range: 817-822

[Cite this](#)

Peer Review Authentication June 25, 2021

Antibacterial activity of ethyl acetate extracts of fungi inhabiting *Physalis angulata* L. plant: diversity, antioxidant, and antibacterial activity

Dyah Palupi, Muhammad Ilyas, Andria Agusta
Page range: 823-829

[Cite this](#)

Peer Review Authentication June 25, 2021

Antioxidant activity of several plants from Baung Forest on bone formation cell models

Amad Sulaiman Zubair, Siti Qamariyah Khairunisa, Evi Sulastri, Ihwan, Agustinus Widodo, Nasron, Anil Pitopang
Page: 845-851

[Cite this](#)

Peer Review Authentication June 25, 2021

Antimicrobial activity of *Albizia lebbek* stem bark contains antimalarial substances against *Plasmodium falciparum*
Lutfah Qurrota A'yun, Hilkatul Ilmi, Achmad Fuad Hafid, Aty Widyawaruyanti
Page: 853-858

[Cite this](#)

Peer Review Authentication June 25, 2021

Formulation and characterization of *Eleutherine palmifolia* extract-loaded self-nanoemulsified delivery system (SNEDDS)
Annisa, Mochammad Yuwono, Esti Hendradi
Page: 859-865

[Cite this](#)

Peer Review Authentication June 25, 2021

Optimization of a colorimetric method for the determination of curcumin entrapped in polymeric micellar powder
Yusuf, Nina Wijiani, Rizka Arifa Rahmawati, Riesta Primaharinastiti, M. Agus Syamsur Rijal, Dewituti
Page: 867-873

[Cite this](#)

Peer Review Authentication June 25, 2021

Knowledge in the provision of natural medicines by community pharmacists in East Java Province
P. Puspitasari, Dhita Fatmaningrum, Sa'adatus Zahro, Shofi Salsabila, Zulfia A. Rizqulloh, Ana Yudihah, Anila I. Sukorini, Neny Purwitasari
Page: 875-880

[Cite this](#)

Peer Review Authentication June 25, 2021

In vitro and in silico analysis of phytochemical compounds of 96% ethanol extract of *Semecarpus grisea* (Lam.) Presl.) leaves as a bone formation agent
R. Aditama, Burhan Ma'arif, Hening Laswati, Mangestuti Agil
Page: 881-887

Cite this

Printed to you by **Airlangga University Library (UNAIR)**

Printed

All issues

Contact us

Customer Service
Open Resources
Library
Rights for authors

Career

How to join us
Current Vacancies
Working at De Gruyter

Open Access

Articles
Books
Funding & Support

Authors

Submit your book
Submit your journal article
Publishing & Indexing

For Libraries & Trade Partners

Electronic Journals
Ebooks
Databases & Online Reference
Metadata

Our Partner Publishers

Privacy & Permissions

Privacy Policy
Access Policy

About De Gruyter

De Gruyter Foundation
Our locations

Help/FAQ
Privacy Policy
Terms & Conditions
Legal Notice

Aniek Setiya Budiatin, Ilham Bagus Sagitaras, Ika Putri Nurhayati, Nismatun Khairah, Khoirotin Nisak, Imam Susilo and Junaidi Khotib*

Attenuation of hyperplasia in lung parenchymal and colonic epithelial cells in DMBA-induced cancer by administering *Andrographis paniculata* Nees extract using animal model

<https://doi.org/10.1515/jbcpp-2020-0440>

Received December 27, 2020; accepted March 7, 2021

Abstract

Objectives: This study was designed to evaluate the potential of *Andrographis paniculata* ethanolic extract to inhibit the increase in proliferation and induction of abnormal cell death.

Methods: The hyperplasia stage as an early stage of cancer development was induced by oral administration of 20 mg/Kg BW DMBA to SD rats twice a week for 5 weeks. There were five groups in this study include negative control, positive control, and treatment groups of DMBA induction followed by administration of *A. paniculata* ethanolic extract in doses equivalent to 10, 30 or 100 mg/Kg BW andrographolide once per day for 6 consecutive weeks. On the last day, rats were sacrificed, lung and colon tissues were collected. Histological examination by HE staining and immunohistochemistry using p53, telomerase, and caspase-3 antibodies were aimed at observing hyperplasia state in these tissues.

Results: DMBA induction to SD rats was able to produce hyperplasia in lung parenchymal and colon epithelial tissue. This can be showed by the increasing number of proliferated cells and as indicated by the number of brown-colored nuclei with sharper intensity. As well telomerase appears to be overexpressed strongly, while p53 and caspase-3 show low intensity. The administration of

A. paniculata extract for 6 weeks showed a decrease in the number of cells that actively proliferate, a decrease in telomerase activity, and an increase in caspase-3 levels which indicate cellular death activity.

Conclusions: *A. paniculata* ethanolic extract can inhibit the development of cancer at the hyperplasia stage by reducing telomerase activity and increasing apoptosis, marked by an increase of caspase-3 expressions.

Keywords: *Andrographis paniculata*; caspase-3; DMBA-induced cancer in rats; hyperplasia; telomerase.

Introduction

Cancer is a group of disorders characterized by uncontrolled cell growth, local tissue invasion, and distant metastases. Abnormal cell proliferation leads to hyperplasia, an increase in the number of cells in an organ, and can spread to other organs through the metastasis process where metastasis is the main cause of cancer death. The formation of cancer cells is believed as the result of physical, biological, or chemical carcinogen damage and alters genetic and epigenetic [1, 2].

According to the report, cancer is the second leading cause of death globally, accounting for an estimated 9.6 million deaths, or one in six deaths, in 2018. Lung and colorectal cancer are the most common type of cancer in both men and women, and the most common cause of cancer death. Its high mortality rate is due to the absence early diagnosis and the symptoms in the early stage, so it can be detected and treated after reaching an advanced stage [3]. For this reason, inhibition of abnormal cell growth at the hyperplasia stage becomes critical in reducing the rate of cancer development and the incidence of death.

The current paradigm of cancer research is focused on therapy that has a more selective target so as to minimize the toxic effects on normal cells. Therapies that selectively act directly on target proteins, growth receptors or small

*Corresponding author: Junaidi Khotib, Department of Clinical Pharmacy, Faculty of Pharmacy, Airlangga University, Jl Mulyorejo, Kampus C Unair, 60286, Surabaya, East Java, Indonesia, E-mail: junaidi-k@ff.unair.ac.id

Aniek Setiya Budiati, Ilham Bagus Sagitaras, Ika Putri Nurhayati, Nismatun Khairah and Khoirotin Nisak, Department of Clinical Pharmacy, Faculty of Pharmacy, Airlangga University, Surabaya, East Java, Indonesia

Imam Susilo, Department of Pathological Anatomy, Faculty of Medicine, Airlangga University, Surabaya, East Java, Indonesia

molecule inhibitors that have overexpression on cancer cells. With an understanding of the genetic changes and cell cycle in cancer cells compared to normal cells, it will encourage the discovery of new drugs that are selective in cancer cells. The expected effects of anticancer therapy include decreased cell proliferation and increased apoptosis.

The components that play a role in cell proliferation are telomere and telomerase. Telomeres are repeated DNA complexes (TTAGGG) that have an important role in the life of cancer cells. They are maintained by an enzyme called telomerase in the vast majority of tumors. The mechanisms underlying the maintenance of telomere length (TL) and telomerase expression are related to transcription, post-transcription, and epigenetic regulation, and an in-depth understanding of these mechanisms can provide new biomarkers and targets for early detection of disease, determination of disease prognosis, and development of therapy [4].

Inhibition of telomerase activity can induce apoptosis, which is programmed cell death that genetically regulates the development and homeostasis of an organism. Apoptotic activation occurs in two pathways, intrinsic and extrinsic, each of which can activate the effector caspases, caspase-3 and 7. If the effector caspase is activated, the cell will experience apoptosis [5]. In cancer patients, where cell proliferation cannot be controlled, apoptosis is important as a mechanism to control cancer cell growth. Drugs that inhibit telomerase activity and induce apoptosis can be used as an effective and selective alternative to colon cancer therapy so as to minimize side effects.

Cancer treatment depends on the stage of the cancer. In the early stages (I, II, III) cancer can be cured, but in the late stage (IV) treatment is aimed at palliative therapy to reduce symptoms, prevent complications, and prolong life [1]. Cancer is used to be treated with surgery, radiation, and systemic anticancer agent where the choice of treatment is based on the type and stage of cancer. Systemic anticancer agents such as chemotherapy, targeted therapy, and immunotherapy, aimed to kill cancer cells and minimizing side effects on healthy cells [1]. Therefore, it is necessary to develop new anticancer agents that can increase the effectiveness and tolerance.

One of the plants that have been suspected of having an anticancer effect is *Andrographis paniculata* Ness, with andrographolide as a chemical substance that is responsible for its anticancer activity. *A. paniculata* extracts and their major diterpenoid component has been reported that able to suppress cell proliferation, induce cell cycle arrest, and induce cell apoptosis of cancer cells [6]. Combination of andrographolide and fluorouracil (5-FU) is used for

treatment 5-FU resistance in colorectal cancer. Andrographolide in combination with fluorouracil (5-FU) is used for the treatment of 5-FU resistance in colorectal cancer. Andrographolide can induce apoptotic cell death so that 5-FU sensitivity in cancer cells increases [7]. *A. paniculata* ethanolic extract played a role in the intervention of cancer formation. Administration of *A. paniculata* extract in colon cancer can reduce the number of aberrant cancer cells and frequencies of aberration per cell [8]. *A. paniculata* extract can reduce telomerase activity and increase apoptosis by activating the PI3K/AKT/AP-1 signaling pathway [9]. Therefore, this study was designed to evaluate the potential of andrographolide in *A. paniculata* ethanolic extract to inhibit the increase in proliferation and induction of abnormal cell death.

Materials and methods

A. paniculata Ness ethanolic extract obtained from the Pharmacognosy and Phytochemical Laboratory of Faculty of Pharmacy Airlangga University. The extract was suspended with CMC Na 0.1% (w/v) in aquadest. The preparations were made in three different doses that equivalent to 10, 30 and 100 mg andrographolide/kgBW. Andrographolide content was determined using Thin Layer Chromatography (TLC) and Densitometer Shimadzu CS-930. Mixture of chloroform and methanol (9:1) was used as an eluent in TLC method.

Female Sprague Dawley (SD) rats, 7–10 weeks of age, were acquired from Integrated Research and Testing Laboratory of Gadjah Mada University. In this study, SD rats were divided into five groups. Group 1 (negative control) was fed orally with Oleum Maydis twice a week for 5 weeks (at induction phase) and CMC-Na everyday (at treatment phase). Group 2 (positive control) was induced by oral administration of 20 mg/Kg BW DMBA to SD rats twice a week for 5 weeks (induction phase) and CMC-Na everyday (at treatment phase). Group 3, 4, and 5 (treatment groups), were induced by DMBA and followed with administration of doses that equivalent to 10, 30 or 100 mg/Kg BW andrographolide in ethanolic extract once per day for 6 consecutive weeks. On the last day, rats were sacrificed, lung and colon tissues were collected. Doses of 10, 30 or 100 mg/kg BW andrographolide was adopted as low, medium, and high dosage that altered the expression of genes in cellular compromise, cell cycle, and "DNA recombination, replication, and repair" [10].

Telomerase and caspase-3 were detected using affinity purified rabbit anti-rat caspase-3 antibody (Bioworld Technology Inc.) and rabbit anti-rat telomerase antibody (Bioworld Technology Inc.). Tissue sections were rehydrated using alcohol solution with a decrease in concentration every 2 min (99, 99, 90, 80, 70%) and subjected to specific antigen retrieval treatment. Endogenous peroxidase activity was blocked with H₂O₂ 0.3%/methanol. Background was blocked using Block Serum Free X 0909, dropped in "marking pen immunologic" area at room temperature for 5 min, then washed with TRIS buffer/Tween 20 for 5 min and swap the tissue around "marking pen immunologic" area.

For immunohistochemistry (IHC), Primary antibodies were dropped into the "Marking pen immunologic" area and then incubated in

closed magnetic immunostaining at room temperature for 1 h and incubate 4 °C overnight with the tissue, washed with TRIS buffer/Tween 20 for 5 min and swap the tissue around “marking pen immunologic” area. Secondary antibodies (Biotin-labeled Link) was dropped on “marking pen immunologic” area at room temperature for 10 min, washed then dropped HRP (Streptavidin Peroxidase Conjugate) and incubate at room temperature for 10 min. Washed then dropped DAB at room temperature for 5–10 min and washed with water for 5 min. Then, tissue sections were counterstained with hematoxylin and dehydrated. The results of immunohistochemistry staining were analyzed qualitatively on the expression of telomerase and caspase-3 proteins by observing using a 1000x magnification light microscope.

Results

Andrographolide content in *A. paniculata* ethanolic extract had been shown in Table 1. The result show that *A. paniculata* ethanolic extract that used in this research contain 11.65% w/v andrographolide.

Administration of *A. paniculata* extract to SD rats that had been induced by DMBA was able to improve the lung structure of rats as shown in Figure 1. In this figure, it has

shown the histology of the lungs in rats that have been given *A. paniculata* extract with doses equivalent to 10, 30 and 100 mg/kg BW andrographolide. Compared with the histology of the lungs in rats that were only given DMBA (A), the alveolar structure began to appear with narrower space between the alveoli and the wider alveolar cavity on the lung histology after administration of *A. paniculata* extracts (B), (C), and (D).

From Figure 1, it can be seen that giving the extract with andrographolide dose of 10 mg/kg BW suppresses the rate of cell proliferation not as much as the extract with andrographolide dose of 30 and 100 mg/kg BW. This can be seen from the number of cells that are still quite large in the alveolar space compared to the other two doses. Meanwhile, the extract with andrographolide doses of 30 and 100 mg/kg BW resulted in almost the same histological picture of lung structure improvement.

The ability of *A. paniculata* extract in suppressing the rate of cell proliferation is associated with decreased telomerase activity in cells, shown in Figure 2. From the results of observations of telomerase using a light microscope qualitatively, it was found that *A. paniculata* extract could

Table 1: Andrographolide content in *A. paniculata* ethanolic extract.

Samples	Total andrographolide applied in TLC, 2 µL	Total andrographolide measured, 5.0 mL	Total weighed sample	Andrographolide content in sample
1	922.20 ng	2.305 mg	20.4 mg	11.32%
2	973.74 ng	2.434 mg	20.3 mg	11.99%
Mean andrographolide concentration in sample				11.65%

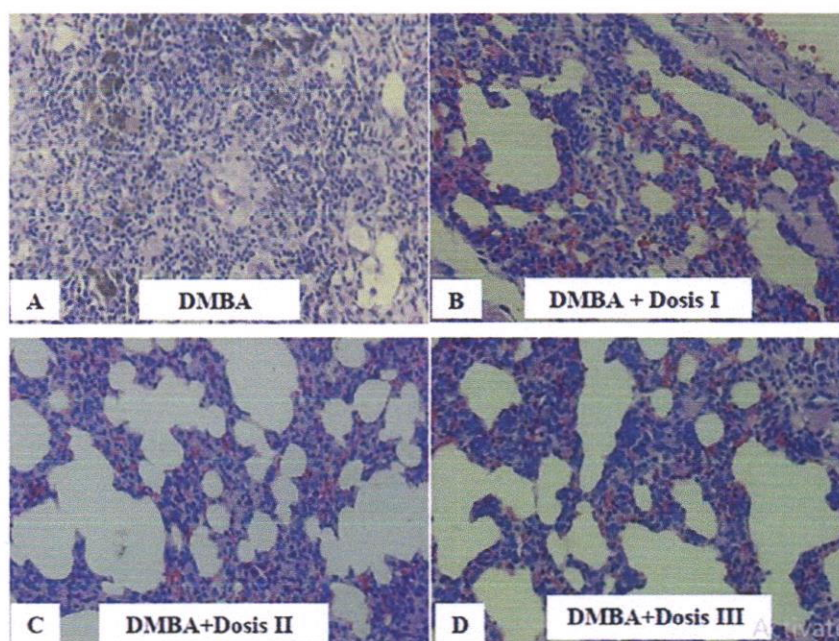


Figure 1: Histopathology of SD rats lung given DMBA (A) and given *A. paniculata* extract with doses equivalent to 10 mg/kg BW (B), 30 mg/kg BW (C), and 100 mg/kg BW (D) andrographolide using Hematoxylin-Eosin staining at 400x Magnification.

reduce the expression of telomerase protein. The decrease in telomerase protein expression at the extract with dose of andrographolide 10 mg/kg BW was lower than the other doses (Figure 2B), it appears that the number of cells that absorb brown is still quite a lot. Whereas at the extract with andrographolide dose of 100 mg/kg BW (Figure 2D), it appears that number of cells that absorb the brown color less than the other doses. However, from these observations it was not certain that the dose that was able to suppress telomerase activity was the best among the three doses given.

In observing caspase-3 activity, the results showed that there was an increase in the expression of caspase-3 after giving treatment as seen in Figure 3 where cells absorbed more brown in the treatment group compared to the DMBA group. The extract with andrographolide dose of 10 mg/kg BW showed the lowest caspase-3 expression among other doses.

Changes in colonic tissue morphology after treatment with *A. paniculata* extract can be observed in Figure 4. When compared with DMBA group (Figure A), where the epithelial cells appear thicker due to increased proliferation and hyperchromatic nuclei, the three treatment groups showed improvement in decreasing cell proliferation. In treatment group I extract with a dose of andrographolide 10 mg/kg BW (Figure 4B) showed that the enlargement of the nucleus was reduced, but the epithelial cells that proliferated and showed hyperchromatic nuclei were still present. Treatment group II extract with a dose of andrographolide 30 mg/kg BW (Figure 4C) showed a more pronounced decrease in proliferation and cell boundaries.

Treatment group III extract with a dose of andrographolide 100 mg/kg BW (Figure 4D) also showed a decrease in proliferation, but the difference with treatment group II was not clear.

Telomerase expression after treatment with *A. paniculata* extract in the three treatment groups can be observed in Figure 5. When compared with DMBA group, it can be clearly observed that the telomerase expression in the treatment group decreased. This can be seen from the reduced number of cells whose nuclei are brown. The color intensity in the treatment group appeared sharper and varied. In treatment group I (Figure 5B), cells expressing nuclear telomerase appear larger and elongated, indicating that the cell is in a mitotic state. The difference in telomerase expression between treatment groups could not be known because scoring could not be done due to cutting the tissue that was too thick. From immunohistochemistry, it is known that treatment using *A. paniculata* extract can reduce the proliferation of colonic epithelial cells exposed to DMBA which is characterized by a decrease in telomerase expression.

The expression of caspase-3 in the group that had received *A. paniculata* extract treatment can be seen in Figure 6. The difference in the immunohistochemistry between DMBA group and the treatment group that received *A. paniculata* extract treatment was that the number of caspase-3 expressions was more often found in the treatment group. When compared with the test control group (Figure 6A), the color intensity of epithelial cells expressing caspase-3 in treatment groups I (Figure 6B) and II (Figure 6C) was sharper. In the treatment group III

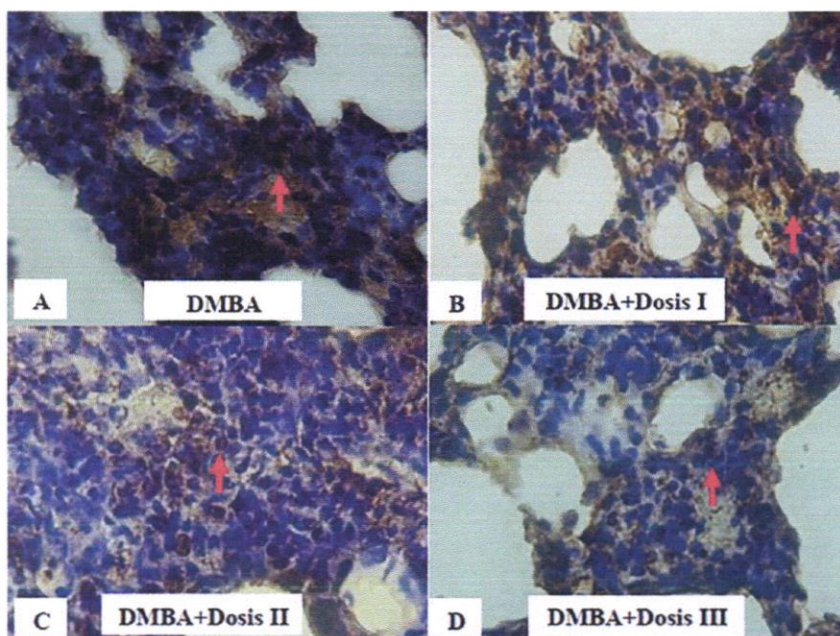


Figure 2: Immunohistochemistry staining using telomerase antibodies in SD rats lung given DMBA (A) and given *A. paniculata* extract with doses equivalent to 10 mg/kg BW (B), 30 mg/kg BW (C), and 100 mg/kg BW (D) andrographolide using Hematoxylin-Eosin staining at 400x magnification. Red arrows indicate cells that express telomerase.

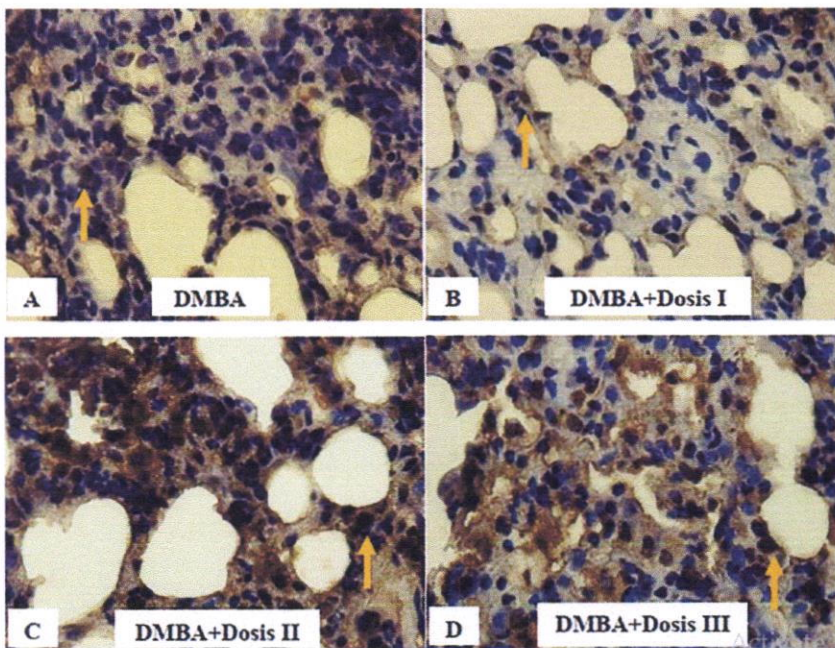


Figure 3: Immunohistochemistry staining using caspase-3 antibodies in SD rats lung given DMBA (A) and given *A. paniculata* extract with doses equivalent to 10 mg/kg BW (B), 30 mg/kg BW (C), and 100 mg/kg BW (D) andrographolide using Hematoxylin-Eosin staining at 400x magnification. Yellow arrows indicate cells that express caspase-3.

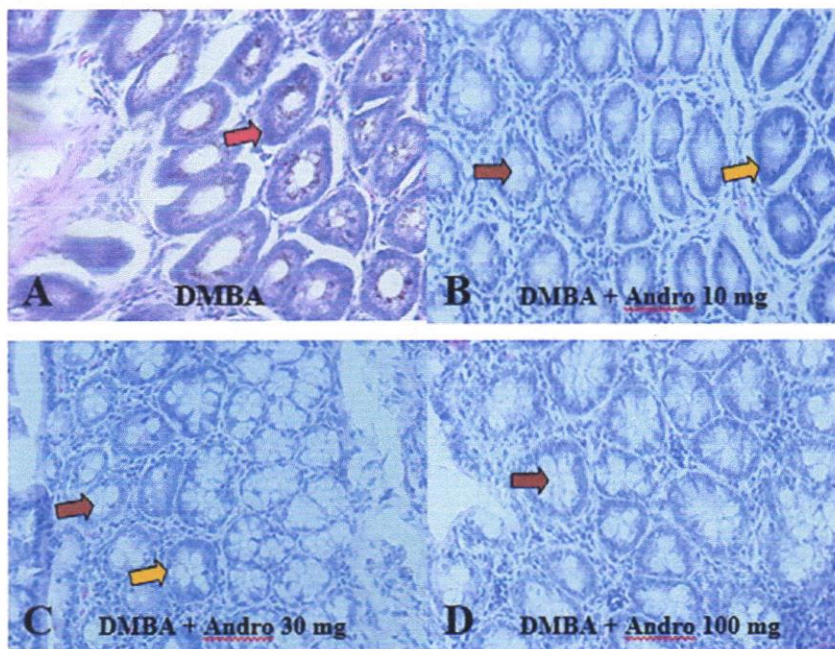


Figure 4: Histopathology of SD rats colon given DMBA (A) and given *A. paniculata* extract with doses equivalent to 10 mg/kg BW (B), 30 mg/kg BW (C), and 100 mg/kg BW (D) andrographolide Hematoxylin-Eosin staining at 400x magnification. Red arrow indicates epithelial cells without treatment, yellow arrow indicates epithelial cells after treatment, brown color indicates goblet cells.

(Figure 6D), the apoptosis also increased with a more diverse color intensity.

Discussion

Lung and colon cancer is one of the leading causes of cancer death. Several studies on the causes of this cancer state that the development of these cancers is related to dietary factors, environment, lifestyle, and comorbid

conditions as well as genetic factors due to genetic mutations and physical weakness [1]. Experimental models showing complex cancer-causing interaction equations are needed to test various mechanisms and determine the carcinogenic potential of a chemical compound. In this study, the effect of telomerase and caspase-3 expression on lung and colon cancer that given *A. paniculata* extract was carried out using experimental animals Sprague-Dawley rats with induction of 7,12-Dimethylbenz(a)anthracene (DMBA).

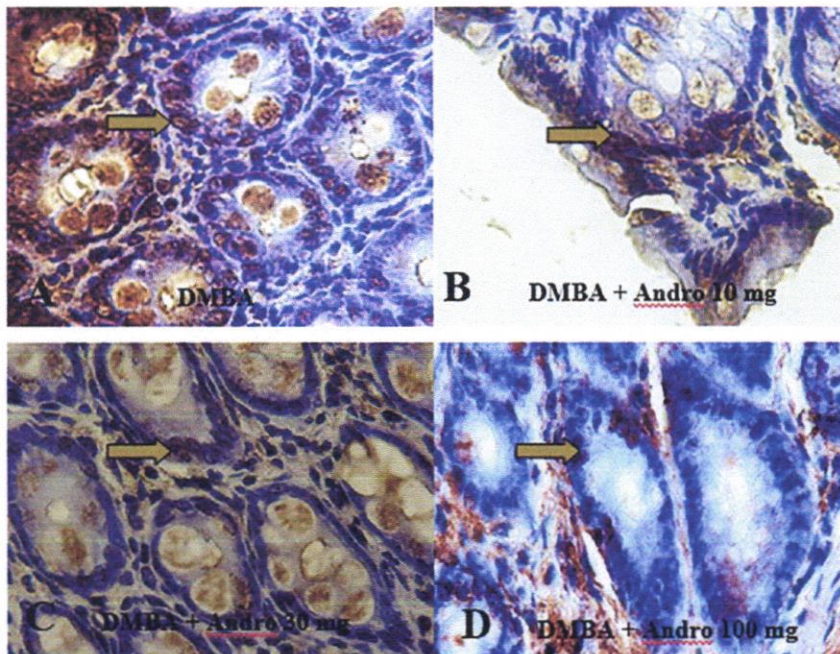


Figure 5: Immunohistochemistry staining using telomerase antibodies in SD rats colon given DMBA (A) and given *A. paniculata* extract with doses equivalent to 10 mg/kg BW (B), 30 mg/kg BW (C), and 100 mg/kg BW (D) andrographolide using Hematoxylin-Eosin staining at 400x magnification. Gray arrows indicate cells that express telomerase.

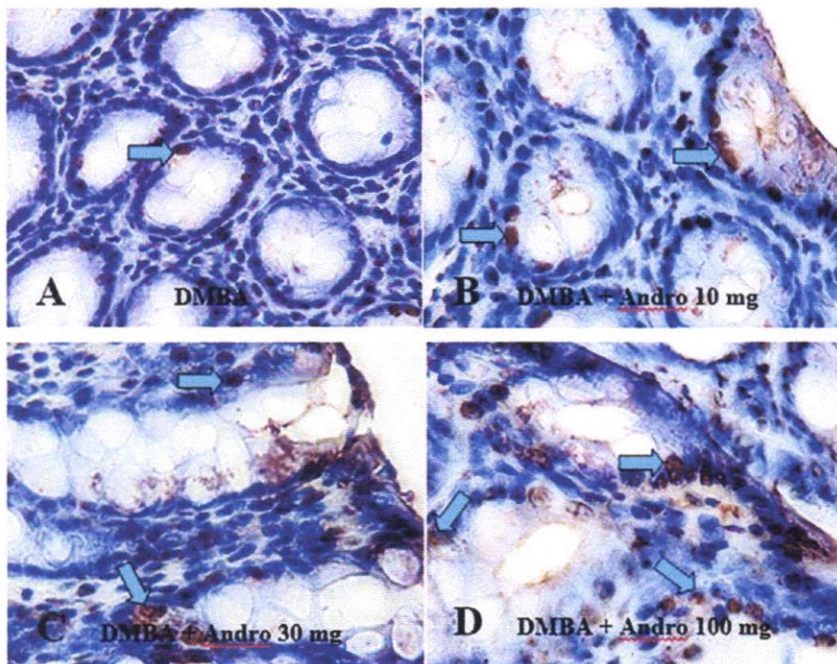


Figure 6: Immunohistochemistry staining using caspase-3 antibodies in SD rats colon given DMBA (A) and given *A. paniculata* extract with doses equivalent to 10 mg/kg BW (B), 30 mg/kg BW (C), and 100 mg/kg BW (D) andrographolide using Hematoxylin-Eosin staining at 400x magnification. Blue arrows indicates cells that express caspase-3.

The use of experimental animals in cancer research is supported by the fact that experimental animals have in common with humans in terms of response to exposure to carcinogens. Some of the protooncogenes and gene suppressor tumors in humans are homologous to rats. The difference is that in rats, fewer genetic changes are required [11]. Long-term studies on rat models prove that this model is useful for knowing the stages of initiation, promotion, and progress of carcinogenesis.

DMBA is a polycyclic aromatic hydrocarbon (PAH) carcinogen. Chronic exposure to PAH class carcinogens can lead to cancer, especially in cells that have a fast replicative cycle, for example bone marrow, skin, and lungs. Previous research conducted by Harris et al. [12] stated that the induction of benzo (a) pyrene can cause adenoma in the colon. In other studies, it is demonstrated that oral administration of DMBA can induce lung cancer [13].

Evaluation of the effect of *A. paniculata* extract on lung and colon carcinogenesis in rats was carried out by histological observation using Immunohistochemistry. Cell proliferation can be determined by observing protein expression telomerase in cancer [14]. In addition, an observation of the expression of caspase-3 which was an effector caspase in the apoptosis process with immunohistochemistry staining using caspase-3 antibodies. In lung carcinogenesis, pulmonary septal interalveolar cells of rats given DMBA, whereas in normal rats, there was no expression of telomerase. In normal cells, the expression of telomerase is very low due to the activation of checkpoints in the cell cycle which causes telomere shortening. The shortening of the telomere causes the cell to enter the senescence phase, which was the phase where the cell does not divide anymore [2].

Observations of caspase-3 activity were also carried out to determine the presence of apoptosis in cells. From the observations, it was found that no caspase-3 expression was seen in normal cells, while cells that had been exposed to DMBA appeared to express caspase-3. An increase in caspase-3 expression indicated apoptosis due to DMBA administration which could cause DNA damage that triggered apoptosis.

Efforts that can be made to inhibit carcinogenic processes are by suppressing telomerase activity so as to suppress cell proliferation and induce apoptosis. *A. paniculata* is a plant known to have anticancer properties. Therefore, the observation of the effect of *A. paniculata* extract on proliferation and apoptosis in lung cells of SD rats that had been induced by DMBA was conducted. To determine the effect of *A. paniculata* extract on rats that have been induced by DMBA, histological microscopic observation using immunohistochemistry was carried out using telomerase and caspase-3 antibodies.

Observation of telomerase activity was carried out qualitatively by looking at the cells that expressed telomerase, cells whose nuclei were brown due to the application of chromogen DAB on immunohistochemistry staining. Observations were made using a light microscope with 400x and 1000x magnifications. The decrease in telomerase protein expression was carried out by observing interalveolar septal cells in several fields of view and then compared between treatment groups. From these observations, it was found that there was a decrease in telomerase expression in rat lung cells after giving *A. paniculata* extract. Meanwhile, on the caspase-3 activity examination to determine the presence of apoptosis, the results showed that there was an increase in caspase-3 expression in the lung cells of rats given *A. paniculata* extract which was shown in brown on the cells. However, from the qualitative analysis conducted, it was not known

the optimal dose that could significantly suppress telomerase activity and induce apoptosis.

In colon carcinogenesis, the difference in cell morphology between the DMBA-given group and the treatment group (*A. paniculata* extract) can be seen in Figure 4. With an increase in the dose of *A. paniculata* extract given, it was seen that there was an improvement in the form of decreased epithelial cell proliferation and goblet cell formation began to clear. Although hyperchromatic nuclei were still observed in the treatment group, its intensity was not as big as the control group. *A. paniculata* extract plays a role in reducing the initiation and promotion of carcinogens against colon cancer but does not inhibit its progress. This mechanism is often obtained in the anticancer of plant extracts [15].

Furthermore, an immunohistochemistry examination was carried out to determine how changes in cell proliferation and apoptosis after DMBA exposure and treatment with *A. paniculata* extract. In this study, an increase in cell proliferation due to chronic DMBA exposure to rats colonic epithelial cells was observed with an increase in telomerase enzyme expression. Telomerase acts as a major positive regulator of telomere length and can bind to telomeres which facilitate the elongation of chromosomes and prevent their shortening. Progressive shortening occurs during cell division so that increased telomerase activity can be found in cells that are actively proliferating. Cells that express telomerase positive will appear brown in the nucleus region. The immunohistochemistry features using telomerase antibodies can be seen in Figure 5.

In Figure 5, it is clear that the expression of the telomerase in the DMBA-given group is greater than that in the normal control group. This suggests that exposure to DMBA can increase the proliferation of colonic epithelial cells. The DNA adducts binding between DMBA metabolites and DNA causes mutations. In the treatment group that received *A. paniculata* extract treatment equivalent to 10, 30, and 100 mg andrographolide/kg BW of rats showed a decrease in telomerase enzyme expression. This shows that *A. paniculata* extract can reduce the expression of the telomerase enzyme so that it can limit uncontrolled cell growth as the beginning of carcinogenesis.

In addition to reducing cell proliferation, apoptosis is indispensable to prevent carcinogenesis. Apoptosis as an important mechanism in controlling cancer cell growth was observed in this study using immunohistochemistry examination with caspase-3 antibodies. In cancer conditions, the apoptosis process cannot run properly, so that cell growth is not controlled. Cells that are positive to express caspase-3 will show a brown color in the cytoplasm and over time it can be observed in the nucleus [16].

Immunohistochemistry results of colonic tissue with caspase-3 antibodies can be seen in Figure 6. Both treatment groups I, II, and III, colonic epithelial cells express caspase-3. Observation of the color intensity shows that the intensity in the treatment group is greater and clearer than the control test. The number of cells expressing caspase-3 in the treatment group was also higher.

The use of caspase-3 antibodies to detect apoptosis is a sensitive, accurate, and independent method of DNA fragmentation [16]. Previously, it was known that treatment with *A. paniculata* extract could reduce the activity of the telomerase enzyme. Inhibition of telomerase activity can induce apoptosis, namely programmed cell death which genetically regulates the development and homeostasis of an organism [5]. Because hyperplasia is an early stage of cancer development, it is hoped that *A. paniculata* extract can be used as an alternative to more effective colon cancer therapy.

Conclusions

From this study, it can be seen that *A. paniculata* extract is able to suppress telomerase activity and increase the occurrence of apoptosis, this can be used as an early stage in developing the use of *A. paniculata* as an anticancer. Moreover, *A. paniculata* extract has the ability to inhibit carcinogenesis in colonic epithelial cells due to chronic DMBA exposure through inhibition of telomerase enzyme activity, thereby reducing proliferation and inducing apoptosis which is marked by an increase in caspase-3.

Acknowledgments: We thank our colleagues from the Department of Clinical Pharmacy, Faculty of Pharmacy, University of Airlangga for all supporting during research.

Research funding: This research was funded by the Ministry of Research, Technology, and Higher Education of Republic of Indonesian through a scheme of Mandate Research Grant 2019–2020.

Author contributions: All authors have accepted responsibility for the entire content of this manuscript and approved its submission.

Competing interests: Authors state no conflict of interest.

Ethical approval: All experiments were conducted at the Animal Research Laboratory of the Faculty of Pharmacy University of Airlangga, Surabaya, Indonesia in accordance with the Guideline for the Care and Use of Laboratory Animals issued by the National Institutes of Health revised in 1985. The Ethic Committee of Faculty of

Veterinary Medicine Universitas Airlangga, Surabaya, Indonesia, approved the study protocol.

References

1. Cordes LM, Shord SS. Cancer treatment and chemotherapy. In: Dipiro JT, Yee BG, Posey LM, Haines ST, Nolin TD, Ellingrod V, editors. *Pharmacotherapy a pathophysiologic approach*. New York: Mc Graw Hill; 2020.
2. Kumar V, Abbas AK, Aster JC. *Robbins basic pathology*, 10th ed. Philadelphia: Elsevier; 2018.
3. World Health Organization. Latest global cancer data: Cancer burden rises to 18.1 million new cases and 9.6 million cancer deaths in 2018. Geneva: WHO; 2018.
4. Jafri MA, Ansari SA, Alqahtani MH, Shay JW. Roles of telomeres and telomerase in cancer, and advances in telomerase targeted therapies. *Genome Med* 2016;8:1–18.
5. Artandi SE, DePinho RA. Telomeres and telomerase in cancer. *Carcinogenesis* 2010;31:9–18.
6. Dai Y, Chen SR, Chai L, Zhao J, Wang Y, Wang Y. Overview of pharmacological activities of *Andrographis paniculata* and its major compound andrographolide. *Crit Rev Food Sci Nutr* 2019; 59(1 Suppl):S17–29.
7. Wang W, Guo W, Li L, Fu Z, Liu W, Gao J, et al. Andrographolide reversed 5-FU resistance in human colorectal cancer by elevating BAX expression. *Biochem Pharmacol* 2016;121: 8–17.
8. Ahmad MS, Ahmad S, Arshad M, Afzal M. *Andrographis paniculata* a Miracle Herbs for cancer treatment: in vivo and in vitro studies against Aflatoxin B1 Toxicity. *Egypt J Med Hum Genet* 2014;15:163–71.
9. Duan MX, Zhou H, Wu QQ, Liu C, Xiao Y, Deng W, et al. Andrographolide protects against HG-induced inflammation, apoptosis, migration, and impairment of angiogenesis via PI3K/AKT-eNOS signalling in HUVECs. *Mediat Inflamm* 2019:1–15. <https://doi.org/10.1155/2019/6168340>.
10. Forestier-Román IS, López-Rivas A, Sánchez-Vázquez MM, Rohena-Rivera K, Nieves-Burgos G, Ortiz-Zuazaga H, et al. Andrographolide induces DNA damage in prostate cancer cells. *Oncotarget* 2019;10:1085–101.
11. Anisimov VN, Ukraintseva SV, Yashin AI. Cancer in rodent: does it tell us about cancer in human. *Nature* 2005;5:807–17.
12. Harris D, Washington MK, Hood DB, Robert LJ II, Ramesh A. Dietary fat-induced development of colon neoplasia in ApcMin mice exposed to benzo(a)pyrene. *Toxicol Pathol* 2009;37: 938–46.
13. Mun'im A, Andrajati R, Susilowati S. Uji Hambatan Tumorigenesis Sari Buah Merah (*Pandanus Conoideus* LAM.) terhadap Tiuks Putih Betina yang Diinduksi 7,12 Dimetilbenz(a)antrasen (DMBA). *Maj Ilm Kefarmasian* 2006;3:153–61.
14. Meyerson M. Role of telomerase in normal and cancer cell. *J Clin Oncol* 2000;18:2626–34.
15. Airlay R. *Cancer chemotherapy*. UK: John Wiley & Sons Ltd.; 2009.
16. Cor A, Pizem J, Gale N. Immunohistochemical analysis of pro- and active- caspase-3 in laryngeal squamous cell carcinoma. *Vischows Arch* 2004;444:439–46.

also developed by scimago:



SCIMAGO INSTITUTIONS RANKINGS

SJR

Scimago Journal & Co Enter Journal Title, ISSN or Publisher Name

[Home](#)[Journal Rankings](#)[Country Rankings](#)[Viz Tools](#)[Help](#)[About Us](#)

Journal of Basic and Clinical Physiology and Pharmacology

COUNTRY[Germany](#)Universitäts- und
Forschungsanstalt für
Medizin in
Deutschland**SUBJECT AREA AND
CATEGORY**[Biochemistry,
Genetics and
Molecular Biology
Physiology](#)[Medicine
Medicine
\(miscellaneous\)](#)[Pharmacology,
Toxicology and
Pharmaceutics
Drug Discovery
Pharmacology](#)**PUBLISHER**[Walter de
Gruyter GmbH](#)**H-INDEX****36****PUBLICATION
TYPE**[Journals](#)**ISSN**[07926855,
21910286](#)**COVERAGE**[1985-1988,
1990-2021](#)**INFORMATION**[Homepage](#)[How to publish
in this journal](#)[m.horowitz@ma
il.huji.ac.il](mailto:m.horowitz@ma
il.huji.ac.il)

SCOPE

The Journal of Basic and Clinical Physiology and Pharmacology (JBCPP) is a peer-reviewed bi-monthly published journal in experimental medicine. JBCPP publishes novel research in the physiological and pharmacological sciences, including brain research; cardiovascular-pulmonary interactions; exercise; thermal control; haematology; immune response; inflammation; metabolism; oxidative stress; and phytotherapy. As the borders between physiology, pharmacology and biochemistry become increasingly blurred, we also welcome papers using cutting-edge techniques in cellular and/or molecular biology to link descriptive or behavioral studies with cellular and molecular mechanisms underlying the integrative processes. Topics: Behavior and Neuroprotection, Reproduction, Genotoxicity and Cytotoxicity, Vascular Conditions, Cardiovascular Function, Cardiovascular-Pulmonary Interactions, Oxidative Stress, Metabolism, Immune Response, Hematological Profile, Inflammation, Infection, Phytotherapy.

 Join the conversation about this journal

 Quartiles



FIND SIMILAR JOURNALS 

1
**Archives of Physiology and
Biochemistry**
GBR

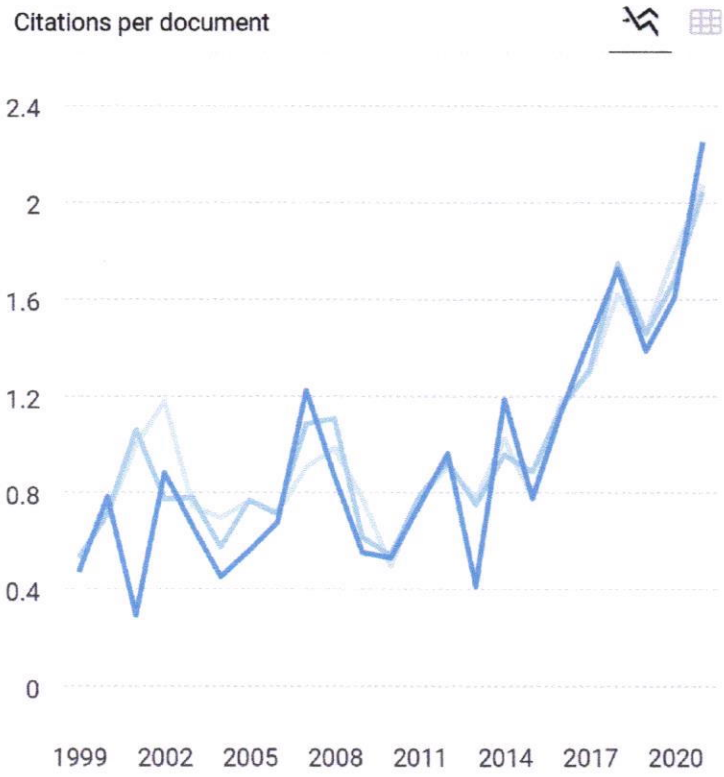
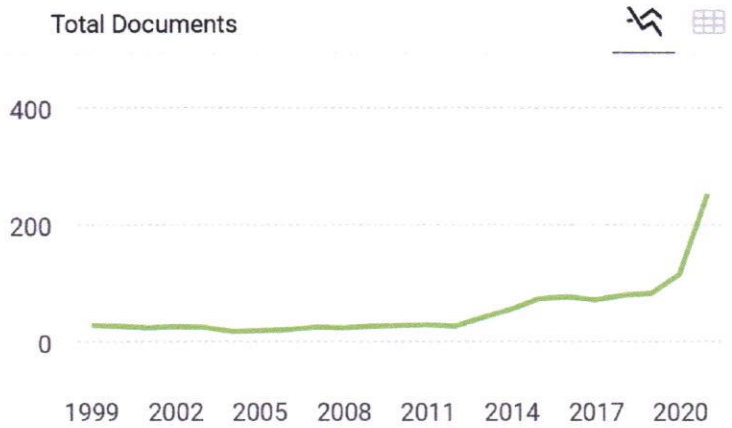
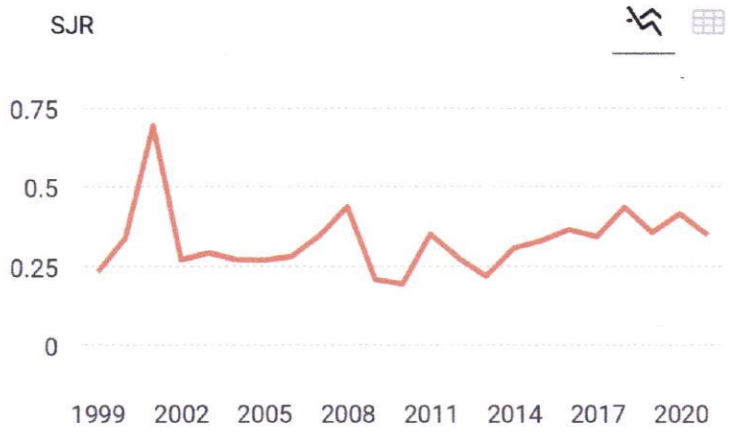
65%

2
**International Journal of
Pharmacology**
PAK

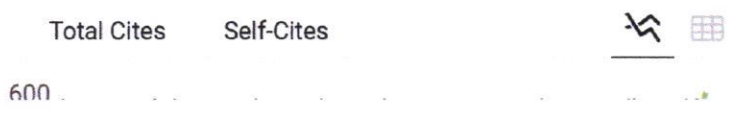
62%

3
Pathophysiology
CHE

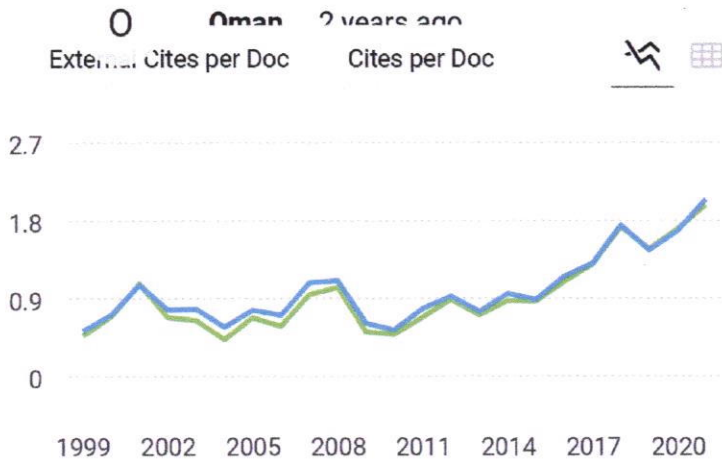
60



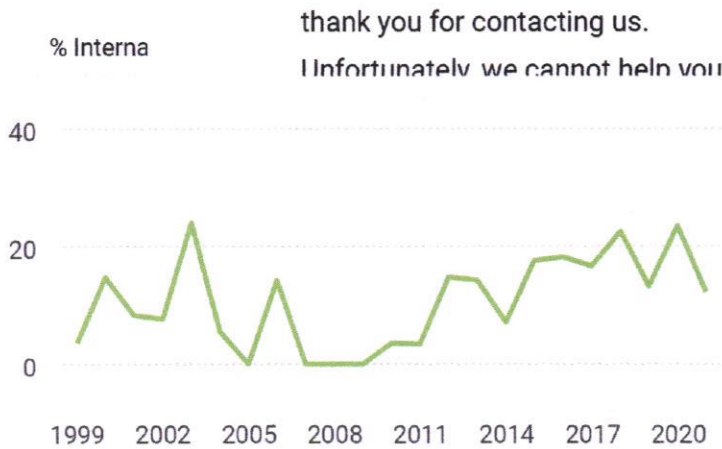
- Cites / Doc. (4 years)
- Cites / Doc. (3 years)
- Cites / Doc. (2 years)



us® data as of April 2022

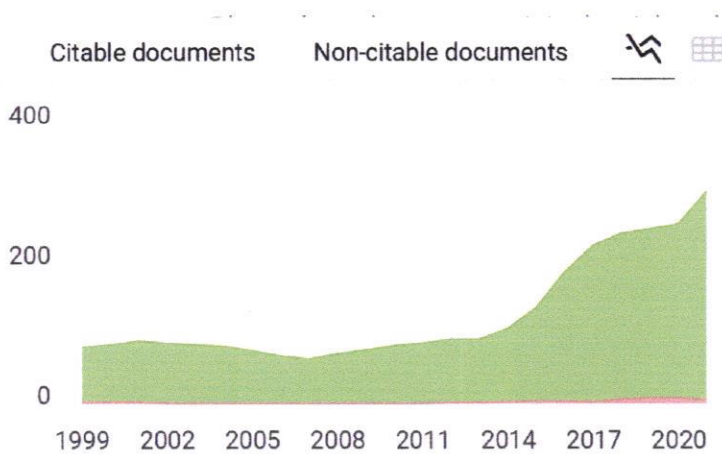


SCImago Team



thank you for contacting us.

I Unfortunately we cannot help you with your request, we suggest you visit the journal's editorial staff , so they could inform



nitted.

SCImago Team

or your comment, we suggest you look for guidelines in the journal's website. Best


Regards, SCImago Team



D

and Pharmacology is online only journal ??

Journal of Basic and Clinical Physiology ← Show this widget in



SCImago Team

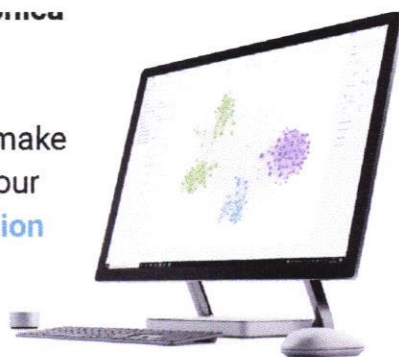
Melanie Ortiz 3 years ago

Dear Jhanvi,
thank you for contacting us.

Sorry to tell you that SCImago Journal & Country Rank is not a journal. SJR is a portal with scientometric indicators of journals indexed in Elsevier/Scopus. Unfortunately, we cannot help you with your request, we suggest you to visit the journal's homepage or contact the journal's editorial staff , so they could inform you more deeply. Best Regards, SCImago Team

SCImago Graphics

Explore, visually communicate and make sense of data with our new data visualization tool.



this journal. Could you possibly send the requirements of publishing at this journal, please?

Kindest regards,
Nilufar

reply

SCImago Team

Melanie Ortiz 3 years ago

Dear Nilufar,

You can see the updated information just above. Best Regards, SCImago Team

Leave a comment

Name

Email

(will not be published)

 I'm not a robotreCAPTCHA
[Privacy](#) - [Terms](#)**Submit**

The users of Scimago Journal & Country Rank have the possibility to dialogue through comments linked to a specific journal. The purpose is to have a forum in which general doubts about the processes of publication in the journal, experiences and other issues derived from the publication of papers are resolved. For topics on particular articles, maintain the dialogue through the usual channels with your editor.

Developed by:



Powered by:



Follow us on @ScimagoJR

Scimago Lab, Copyright 2007-2022. Data Source: Scopus®

EST MODUS IN REBUS
Horatio (Satire 1, 1, 106)

Edit Cookie Consent