

ISSN 1022-0181

IJDIR

INTERNATIONAL JOURNAL OF DEVELOPMENT RESEARCH

Volume 10 Issue 10 October 2017

2017

EDITORIAL BOARD

Editor-in-Chief

Prof. İSMAİL HAKKI NUR,

Professor, Erciyes Üniversitesi, Türkiye

Associate Editor

Idiberto José Zotarelli Filho, M.Sc., Ph.D.,

- FACERES - Medical School of Sao Jose do Rio Preto / SP, Brazil.

- DOMINGO BRAILE INSTITUTE, São José do Rio Preto / SP, Brazil.

Editorial Board

Ferit Gürbüz

Hakkari University, Faculty of Education, Department of Mathematics Education, Hakkari, Turkey

Dr. Hiba Riyadh Al-abodi

College of Science, University of Al-Qadisiyah Iraq.

Prof. Boshra Ismael Arnout

Psychology- Counseling and psychotherapy King Khalid University – Zagazig University Egypt

Daniel Nascimento-e-Silva

Federal Institute of Education Science and Technology of Amazonas Brazil

Fonttamara Lima

FMU Brasil

Saif Ali Mohammed

Middle technical university Iraq

M Chairul Basrun Umanilo

Agricultural-University of Iqra Buru Indonesia

Dr. Mehul Patel

“Shivalay” Bungalow 28, Ganesh Society, Near, Purohit Dining Hall, Karamsad Road, At & Post:-Vallabh Vidyanagar 388120, District: Anand. [Gujarat] [INDIA]

Kathari Santosh, MBA, Ph.D.

Dept. of Management Studies, CMR Institute of Technology, Bengaluru – 560037, Andhra Pradesh

Luai Farhan Zghair

Department of Surgery, General Surgery at AL-Iraqia University, Medical College, Baghdad, Iraq

Eric Randy Reyes Politud

Misamis Oriental State College of Agriculture and Technology 9004 Claveria, Misamis Oriental

Mahmoud Charmiyan

Isfahan University of Technology (IUT), Isfahan, Iran

Jimmy Pham

Arizona College of Osteopathic Medicine, Midwestern University Livonia, MI, USA

Shashank Tiwari

Department of Pharmacy, Integrated Biotechnological Research Institute (IBRI) Lucknow, Uttar Pradesh, India

Mehmet Ozdemir

Medical Microbiology, N.Erbakan University Konya, Turkey

EXPLORE JOURNAL CONTENT

[Instruction to author \(/author-guidelines\)](/author-guidelines)

[Abstracting & Indexing \(/abstracting-indexing\)](/abstracting-indexing)

[Current Issue \(/current-issue\)](/current-issue)

[Archive \(/archive\)](/archive)

[Editorial Board \(http://www.journalijdr.com/editorial-board-0\)](http://www.journalijdr.com/editorial-board-0)

[Manuscript Online Submission \(http://www.journalijdr.com/submit-articles\)](http://www.journalijdr.com/submit-articles)

[Peer Review Process \(http://www.journalijdr.com/peer-review-process\)](http://www.journalijdr.com/peer-review-process)

[Plagiarism Policy \(http://www.journalijdr.com/plagiarism-policy\)](http://www.journalijdr.com/plagiarism-policy)

[Publication Policy and Ethics \(http://www.journalijdr.com/publication-policies-and-ethics\)](http://www.journalijdr.com/publication-policies-and-ethics)

[Contact Us \(/contact-us\)](/contact-us)

QUALIS-CAPES

[Qualis-CAPES \(A2\) \(https://sucupira.capes.gov.br/sucupira/public/consultas/coleta/veiculoPublicacaoQualis/listaConsultaGeralPeriodicos.jsf\)](https://sucupira.capes.gov.br/sucupira/public/consultas/coleta/veiculoPublicacaoQualis/listaConsultaGeralPeriodicos.jsf)

[Submit Manuscript - Qualis IJDR \(http://www.journalijdr.com/submit-articles\)](http://www.journalijdr.com/submit-articles)

AUTHORS

[Manuscript Online Submission \(http://www.journalijdr.com/submit-articles\)](http://www.journalijdr.com/submit-articles)

[Paper Submission Guidelines \(http://www.journalijdr.com/paper-submission-guidelines\)](http://www.journalijdr.com/paper-submission-guidelines)

[How to Publish a Research Paper \(http://www.journalijdr.com/how-publish-research-paper\)](http://www.journalijdr.com/how-publish-research-paper)

[Publication Certificate \(http://www.journalijdr.com/ijdr-publication-certificate\)](http://www.journalijdr.com/ijdr-publication-certificate)

[Impact Factor 2019 \(http://www.journalijdr.com/impact-factors\)](http://www.journalijdr.com/impact-factors)

[Cover Images \(/cover-images\)](/cover-images)

[Call for Papers November 2020 \(http://www.journalijdr.com/call-papers-july-2020\)](http://www.journalijdr.com/call-papers-july-2020)

[Copyright Form \(/copyright-form\)](/copyright-form)

[Contact Us \(/contact-us\)](/contact-us)

BROWSE SUBJECTS

- [Agriculture \(http://www.journalijdr.com/browse-subjects\)](http://www.journalijdr.com/browse-subjects)
- [Auxiliary sciences of history \(http://www.journalijdr.com/browse-subjects\)](http://www.journalijdr.com/browse-subjects)
- [Bibliography. Library science. \(http://www.journalijdr.com/browse-subjects\)](http://www.journalijdr.com/browse-subjects)
- [Information resources \(http://www.journalijdr.com/browse-subjects\)](http://www.journalijdr.com/browse-subjects)
- [Education \(http://www.journalijdr.com/browse-subjects\)](http://www.journalijdr.com/browse-subjects)
- [Fine Arts \(http://www.journalijdr.com/browse-subjects\)](http://www.journalijdr.com/browse-subjects)
- [General Works \(http://www.journalijdr.com/browse-subjects\)](http://www.journalijdr.com/browse-subjects)
- [Geography. Anthropology. Recreation \(http://www.journalijdr.com/browse-subjects\)](http://www.journalijdr.com/browse-subjects)
- [History \(General\) \(http://www.journalijdr.com/browse-subjects\)](http://www.journalijdr.com/browse-subjects)
- [History America \(http://www.journalijdr.com/browse-subjects\)](http://www.journalijdr.com/browse-subjects)
- [Language and Literature \(http://www.journalijdr.com/browse-subjects\)](http://www.journalijdr.com/browse-subjects)
- [Medicine \(http://www.journalijdr.com/browse-subjects\)](http://www.journalijdr.com/browse-subjects)
- [Military Science \(http://www.journalijdr.com/browse-subjects\)](http://www.journalijdr.com/browse-subjects)
- [Music and books on Music \(http://www.journalijdr.com/browse-subjects\)](http://www.journalijdr.com/browse-subjects)
- [Naval Science \(http://www.journalijdr.com/browse-subjects\)](http://www.journalijdr.com/browse-subjects)
- [Philosophy. Psychology. Religion \(http://www.journalijdr.com/browse-subjects\)](http://www.journalijdr.com/browse-subjects)
- [Political science \(http://www.journalijdr.com/browse-subjects\)](http://www.journalijdr.com/browse-subjects)
- [Science \(http://www.journalijdr.com/browse-subjects\)](http://www.journalijdr.com/browse-subjects)
- [Social Sciences \(http://www.journalijdr.com/browse-subjects\)](http://www.journalijdr.com/browse-subjects)
- [Technology \(http://www.journalijdr.com/browse-subjects\)](http://www.journalijdr.com/browse-subjects)

September 2017

1. The use of science curriculum based on al-qur'an in improving the quality of student personality (/use-science-curriculum-based-al-quran-improving-quality-student-personality)
Abdul Madjid Latief and Ifa Faizah Rohmah
Original Article (<https://www.journalijdr.com/sites/default/files/issue-pdf/10284.pdf>)
Volume: 7 , Article ID: 10284
2. Nutriproteomics for obesity research (/nutriproteomics-obesity-research)
Fernando César Rodrigues Brito, Abelardo Barbosa Moreira Lima Neto, Bruno Bezerra da Silva, Luana Mara Silva de Castro Pacheco da Cunha, Ismael Paula de Souza, Mariana de Oliveira Viana Veras, Gildênio Estevam Freire, Ana Angélica Queiroz

downregulation-tnf-%CE%B1-mrna-human-monocytes-infected-mycobacterium-tuberculosis)

Jawed Iqbal, Wasil Hasana, Zeeshan Fatimaa, Abbas Ali Mahdib, and Najmul Islama

Original Article (<https://www.ijournalijdr.com/sites/default/files/issue-pdf/9251.pdf>)

Volume: 07 , Article ID: 9251

32. Suicide, Law and society: Civil disobedience in perspective (/suicide-law-and-society-civil-disobedience-perspective)

Valdir Aragão do Nascimento, Igor Domingos de Souza, Cleberon Dias Lima, Sonia Maria Oliveira de Andrade and Valter Aragão do Nascimento

Original Article (https://www.ijournalijdr.com/sites/default/files/issue-pdf/10342_0.pdf)

Volume: 07 , Article ID: 10342

33. Historical timbers of traditional rafts from along the coast of pernambuco, northeast Brazil (/historical-timbers-traditional-rafts-along-coast-pernambuco-northeast-brazil)

João Carlos Ferreira de Melo Júnior, Marcelo Messadri Hess, Gustavo Borba de Oliveira, Alessandra Pfuetzenreuter, Antônio Buriti Neto, Maria Luiza Schwarz and Cláudia Franca Barros

Original Article (<https://www.ijournalijdr.com/sites/default/files/issue-pdf/10164.pdf>)

Volume: 7 , Article ID: 10164

34. Non specific bacteria isolate in reproductive tract of dairy cattle that experienced repeat breeder at ksu “tunas setia baru” pasuruan regency (/non-specific-bacteria-isolate-reproductive-tract-dairy-cattle-experienced-repeat-breeder-ksu-%E2%80%9Ctunas)

Dewi Nur Sholikhah, Sri Pantja Madyawati, Wiwiek Tyasningsih, Lianny Nangoi and Pudji Srinto

Original Article (<https://www.ijournalijdr.com/sites/default/files/issue-pdf/10307.pdf>)

Volume: 07 , Article ID: 10307

35. A study of impact of nutritional counseling on the health status of patients with type 2 diabetes mellitus (/study-impact-nutritional-counseling-health-status-patients-type-2-diabetes-mellitus)

Ms. Pooja Maheshwari, Dr. Sunayn, Dr. Ankita Tyagi and Dr. Rita Bakshi

Original Article (<https://www.ijournalijdr.com/sites/default/files/issue-pdf/10155.pdf>)

Volume: 7 , Article ID: 10155



ORIGINAL RESEARCH ARTICLE

OPEN ACCESS

NON SPECIFIC BACTERIA ISOLATE IN REPRODUCTIVE TRACT OF DAIRY CATTLE THAT EXPERIENCED REPEAT BREEDER AT KSU “TUNAS SETIA BARU” PASURUAN REGENCY

*¹Dewi Nur Sholikhah, ²Sri Pantja Madyawati, ³Wiwiek Tyasningsih, ⁴Lianny Nangoi and ²Pudji Srinto

¹Student, Veterinary Medicine Faculty, Universitas Airlangga

²Veterinary Reproduction Departement, Veterinary Medicine Faculty, Universitas Airlangga

³Veterinary Microbiology Departement, Veterinary Medicine Faculty, Universitas Airlangga

⁴Veterinary Clinic Departement, Veterinary Medicine Faculty, Universitas Airlangga

ARTICLE INFO

Article History:

Received 28th June, 2017

Received in revised form

19th July, 2017

Accepted 24th August, 2017

Published online 30th September, 2017

Keywords:

Isolate, Non Specific Bacteria,
Dairy Cattle,
Repeat Breeder Case.

*Corresponding author: Dewi Nur Sholikhah,

ABSTRACT

The study aims to isolate genus of non specific bacteria in reproductive tract of dairy cattle that experienced Repeat Breeder at KSU Tunas Setia Baru, Pasuruan Regency.. Bacteria isolate was done using Gram coloring, Catalase test, Motility test, Spore test, further bio-chemical test using medium of TSA, Mannitol and Glucose. Result of observation on 10 bacteria samples was Gram positive bacteria of coccus with white round colony and those that changed MSA medium to be yellowish 2/10 (20%) were samples of number 4 and 5. Gram negative bacteria of coccobacil with methalic green round colony on EMBA medium 5/10 (50%) was obtained from samples number 2,4,7,9 and 10. Gram positive bacteria of bacil and white round colony on medium of TSA and BA 5/10 (50 %) was obtained from samples number 1, 3, 6, 8 and 9. The study concluded that non specific bacteria that was able to be isolated was those from Corynebacterium genus 4/10 (40%), Staphylococcus genus 2/10 (20%) and Escherichia genus 5/10 (50%).

Copyright ©2017, Dewi Nur Sholikhah et al. This is an open access article distributed under the Creative Commons Attribution License, which permits unrestricted use, distribution, and reproduction in any medium, provided the original work is properly cited.

Citation: Dewi Nur Sholikhah, Sri Pantja Madyawati, Wiwiek Tyasningsih, Lianny Nangoi and Pudji Srinto. 2017. “Non specific bacteria isolate in reproductive tract of dairy cattle that experienced repeat breeder at ksu “tunas setia baru” pasuruan regency”, *International Journal of Development Research*, 7, (09), 15598-15601.

INTRODUCTION

In Indonesia dairy cattle is commodity that grows rapidly in the community. It is proven by increase of dairy based food consumption. Present development of cattle uses new biotechnology such as artificial insemination to make cattle of varieties that are able to produce high quantity milk. Dairy cattle type that is high frequently developed in Indonesia especially in high lands is type of FH (Friesian Holstein). Reproductive efficiency is parameter and ability of a cattle to have gestation and produce offspring (Niazi, 2003). However, dairy cattle business still has obstacles that lead to low cattle productivity. Obstacles that arise are many cases regarding reproductive disorder due to less attention on cattle health status.

Case that often exists is repeat breeder, that is, a condition where a female cattle fails to have gestation after being mated three times with a fertile stud without seen abnormality (Zemjanis,1980). High repeat breeder rate will lead to less milk production as success of reproductive efficiency highly influences milk productivity (Brunner, 1984). Symptoms of early death on mated dairy cattle is one of factors that causes repeat breeder (Syarif dan Sumoprastowo, 1985). Referring to that, research on dairy cattle reproductive health particularly identification of bacteria that exists in dairy cattle reproductive tract that experienced repeat breeder at KSU “Tunas Setia Baru” Pasuruan Regency is necessary to be conducted.

METHODOLOGY

Research Procedures

Stage of Research Sample Preparation: 2-3 cm sample cut of plastic sheath tip containing cervical mucus was put into PBS medium and kept in coolbox with temperature of 4°C.

Bacteria Isolate

Sample of PBS medium was then planted in culture medium of Trypticase Soya Agar (TSA) and Blood Agar (BA) which is a common medium to grow bacteria. Mannitol Salt Agar (MSA) and Eosin Methylene Blue Agar (EMBA) were selective medium used to isolate bacteria of Staphylococcus genus and Escherichia genus. Each medium was incubated for 24 hours in incubator.

Gram Coloring

Solution of aquades /sterile water was dripped on glass object, added with 1 culture sample ose, then fixated on fire. It was dripped with violet crystal coloring , and let it for one minute, washed with flowing water. Next, it was dripped with lugol and let it for one minute and washed with flowing water. Then, it was dripped with acetone alcohol, let it for 30 seconds, washed with flowing water and added with safranin let it for 20-30 seconds, then washed again with flowing water. Next step was dry with tissue paper and observe under microscope. If it resulted in red bacteria meaning that it was Gram negative bacteria, On the other hand, purple bacteria meant Gram positive bacteria.

Catalase Test

This test was carried out by dripping solution of hydrogen peroxide (H₂O₂) 3% on clean glass object. Culture was smeared on glass object, dripped with solution of hydrogen peroxide and ose. Suspension was mixed slowly with ose, positive result was marked by air bubbles formed (Hadioetomo, 1990)

Spore Test

This test was conducted by dripping solution of sterile water on glass object added with 1 sample culture ose, then fixated on fire. It was dripped with solution of Malachite green and heated with small torch until vapor was seen on glass object but it was not boiling for one minute. Then it was washed with flowing water and added with safranin for 30 seconds, next it was rinsed with flowing water.

Motility Test

Straight dripping method was done by cleaning glass object until it was clean and fat free, dripped with one ose of bacteria suspension on the middle part, and examined under microscope with its condenser and object lens lowered and 1000 times magnification.

RESULTS OF STUDY

Result of colony and Gram coloring examination on 10 samples on medium prepared was round white colony and Gram coloring on bacil form and purple color amounted to 5/10 (50%) on medium of TSA and BA, round yellow colony

and changed MSA medium into yellowish and Gram coloring on coccus form and purple color amounted to 2/10 (20%), round metallic green colony on EMBA medium and Gram coloring on coccobacil form and red color amounted to 5/10 (50%).

Table 1. Result of Gram Coloring on 10 Cervical Mucus Samples in Reproductive Tract of Dairy Cattle that Experienced Repeat Breeder

No	Sample	Morphology	Gram Coloring	Gram Conclusion
1	1	Bacil	Purple	Positive
2	2	Coccobacil	Red	Negative
3	3	Bacil	Purple	Positive
4	4	Coccobacil	Red	Negative
5	5	Coccus	Purple	Positive
6	6	Bacil	Purple	Positive
7	7	Coccobacil	Red	Negative
8	8	Bacil	Purple	Positive
9	9	Bacil	Purple	Positive
10	10	Coccobacil	Red	Negative

Figure of non specific bacteria of bacil, coccobacil and coccus types can be seen in the Figure below.

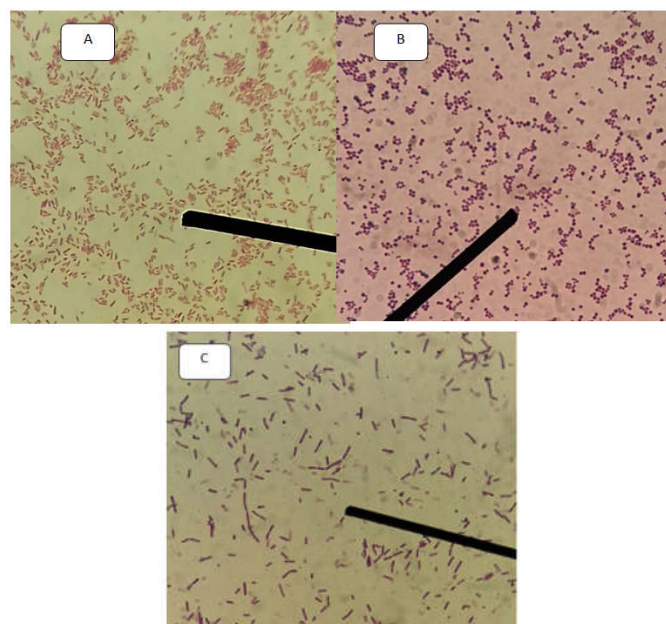


Figure 1. Bacteria morphological form of Gram Coloring : A) Coccobacil Gram negative B) Coccus Gram positive C) Bacil Gram positive. Microscopic examination used optical microscope with 1000 times magnification

Catalase test was only done on two bacteria samples of coccus Gram positive bacteria that is, samples number 4 and 5 and 5 bacteria samples of bacil Gram positive bacteria, that is, samples number 1, 3, 6, 8 and 9.

Table 2. Result of Catalase Test on Coccus Gram Positive Bacteria and Bacil Gram Positive Bacteria Samples

No	Sample	Gas Bubbles	Catalase Test
1	4	Oxygen bubbles exist	Positive
	5		
2	1	Oxygen bubbles exist	Positive
	3		
	6		
	8		
	9		

Spore test was conducted only on samples of Gram positive bacteria with bacil morphology, that is, samples number 1, 3, 6, 8 and 9. It was aimed to differentiate bacteria of *Corynebacterium* genus from that of *Bacillus* genus. The result showed that out of 5 samples, non spore bacteria amounted to 4/5 (80%), that is, samples number 1, 3, 6, and 9, whereas, spore bacteria amounted to 1/5 (20%), that is, sample number 8.

Table 3. Result of Spore Test on Bacil Gram Positive Bacteria

No	Sample	Spore Test
1	1	Negative
2	3	Negative
3	6	Negative
4	8	Positive
5	9	Negative

After spore test was conducted, next Motility, TSIA, Mannitol and Glucose tests were done on samples number 1,3, 6, 8 and 9. The detailed result can be seen at Table 4.

Table 4. Result of Motility, TSIA, Mannitol and Glucose tests

No	Sample	Motility Test	H ₂ S Test	Fermented Carbohydrate	Mannitol	Glucose
1	1	-	-	+	+ no gas	+ no gas
2	3	-	-	+	+ no gas	+ no gas
3	6	-	-	+	+ no gas	+ no gas
4	9	-	-	+	+ no gas	+ no gas

10 bacteria samples taken from reproductive tract of dairy cattle that experienced repeat breeder resulted in non specific bacteria of *Corynebacterium* genus 4/10 (40%), *Staphylococcus* genus 2/10 (20%) and *Escherichia* genus 5/10 (50%). Detailed result can be seen at Table 5.

Table 5. Result of 10 Samples of Non Specific Bacteria Isolate

No	Sample	Non Specific Bacteria Genus
1	1	<i>Corynebacterium</i>
2	2	<i>Escherichia</i>
3	3	<i>Corynebacterium</i>
4	4	<i>Escherichia</i>
		<i>Staphylococcus</i>
5	5	<i>Staphylococcus</i>
6	6	<i>Corynebacterium</i>
7	7	<i>Escherichia</i>
8	9	<i>Corynebacterium</i>
		<i>Escherichia</i>
9	10	<i>Escherichia</i>

DISCUSSION

Examination of cervical mucus samples from dairy reproductive tract of dairy cattle that experienced repeat breeder at KSU Tunas Setia Baru Pasuruan Regency, resulted in several bacteria colonies then continued with Gram coloring which resulted in bacteria morphology of coccus, cocobacil and bacil. Next step to isolate non specific bacteria genus, spore, motility, TSIA and sweet tests (mannitol and glucose tests) were conducted. Subronto (2007) stated that there were two bacteria genus that were able to form spore, that is, *Bacillus* genus and *Clostridium* genus. So it could be concluded that the four samples tested were not non specific bacteria of *Bacillus* genus and *Clostridium* genus and it was assumed that they were non specific bacteria of *Corynebacterium* genus (Subronto, 2007). Bacteria samples that showed non spore bacteria were tested again using

motility test, further tests of TSIA, mannitol and glucose to find out if the bacteria was *Corynebacterium* genus or not.

The result of motility test showed that all samples were non motil bacteria. TSIA test showed that H₂S did not exist as the bottom of the tube was not black. Medium color changed as bacteria samples tested were able to fermentate carbohydrate well to form alkali acid. The same result was obtained when *Escherichia* genus was examined on TSIA medium. Finally mannitol and glucose tests resulted in positive result as there was color change from red to yellow but the gas did not exist and Durham tube did not rise. Bacteria on the fourth sample was bacteria of *Corynebacterium* genus marked by similarity with research of Baya *et al.* (1992), bacteria of *Corynebacterium* genus obtained on the samples using morphological and bio chemical tests was the same as result of test on the fourth sample, so it could be assumed that bacteria genus on the fourth sample was *Corynebacterium* genus. *Staphylococcus* genus bacteria which existed in uterus was assumed to enter the uterus through the hands of officer who did artificial insemination or dystocia aid process. Based on the research of Meisser *et al.*, (1984), *Staphylococcus* genus bacteria was successfully isolated from cattle uterus when the animal was in weak condition or there was wound on mucosa of uterus.

On the other hand, *Escherichia* genus bacteria found was assumed due to feses contamination which contained the bacteria, which occurred during artificial insemination process. This bacteria was normal flora which existed in digestive tract of animals or human (Singh *et al.*, 1988). *Corynebacterium* genus bacteria found was assumed to exist on the ground, water or plants consumed by cattle. This genus was non specific bacteria which was able to cause reproductive disorder, that is, endometritis. Endometritis was likely to exist during unhygienic insemination or birth handling, therefore many bacteria were able to enter the reproductive tract, like other non specific bacteria (Baya *et al.*, 1992).

Conclusion

It can be concluded that 10 bacteria isolate samples from reproductive tract of dairy cattle that experienced repeat breeder at KSU "Tunas Setia Baru" Pasuruan Regency resulted in non specific bacteria of *Corynebacterium* genus 4/10 (40%), *Staphylococcus* genus 2/10 (20%) and *Escherichia* genus 5/10 (50%).

REFERENCES

- Baya, A.M., B. Lupiani, I. Bandin, FM. Hetrick, A.Figueras, EM. May, and AE. Toranzo. 1992. *Corynebacterium aquatum* from culture striped bass 14:115-126
- Brunner, M. A. 1984. Repeat Breeder. Dairy Integrated Reproductive Management. Cornell University
- Hadioetomo, 1990. Mikrobiologi Dasar Dalam Praktek. PT. Gramedia. Jakarta
- Meisser, S., R.Higgins, Y.Couture and M.Morin. 1984. Comparison of Swabbing and Biopsy for Studying the Flora of The Bovine Uterus. *Can. Vet. J.* 25: 283-288.
- Niazi, A.A.K. 2003. Comparative Studies on The Reproductive Efficiency of Imported and Local Born Friesian Cows in Pakistan. *Journal of Biological Sciences*, 3.

-
- Subronto. 2007. Ilmu Penyakit Ternak II. GadjahMada University Press.Yogyakarta. Hal 50-62.
- Singh, N., M.R. Vihan., S.V. Singh and N.K. Bhattacharyya. 1988. Disease Factors Affecting Goat Meat Production. In: C. Devendra, 1988. Goat Meat Production in Asia. Proceeding of workshop held in Tando Jam, Pakistan, 13-18 Maret 1988. 56-57.
- Syarief, M. Z. dan C. D. A. Sumopratowo. 1985. Ternak Perah. CV Yasaguna. Jakarta
- Zemjanis, R, 1980, Repeat Breeding or Conception Failure in cattle; Current Theraphy., Morrow, D.A, W.B Saunders Company Philadelphia, pp: 205.
