

Osteogenic Differentiation and Biocompatibility of Bovine Teeth Scaffold with Rat Adipose-derived Mesenchymal Stem Cells

by Ferdiansyah Mahyudin

Submission date: 06-Dec-2021 01:03PM (UTC+0800)

Submission ID: 1721819821

File name: 4.4_Journal.pdf (1.46M)

Word count: 4627

Character count: 25247

Osteogenic Differentiation and Biocompatibility of Bovine Teeth Scaffold with Rat Adipose-derived Mesenchymal Stem Cells

Desi Sandra Sari^{1,2} Ernie Maduratna³ Ferdiansyah^{4,5} Fourier Dzar Eljabbar Latief⁶ Satuman^{1,7}
Alexander Patera Nugraha^{1,5,8} Ketut Sudiana^{9,10} Fedik Abdul Rantam^{5,11}

¹Faculty of Medicine, Universitas Airlangga, Surabaya, Indonesia

²Department of Periodontics, Faculty of Dentistry, Universitas Jember, Jember, Indonesia

³Department of Periodontics, Faculty of Dental Medicine, Universitas Airlangga, Surabaya, Indonesia

⁴Department of Orthopaedic and Traumatology, Faculty of Medicine, Universitas Airlangga, Dr. Soetomo General Hospital, Surabaya, Indonesia

⁵Stem Cells Research and Development Center, Universitas Airlangga, Surabaya, Indonesia

⁶Micro-CT Laboratory, Faculty of Mathematics and Natural Sciences, Institut Teknologi Bandung, Bandung, Indonesia

⁷Laboratory of Human Physiology, Faculty of Medicine, Universitas Brawijaya, Malang, Indonesia

⁸Department of Orthodontics, Faculty of Dental Medicine, Universitas Airlangga, Surabaya, Indonesia

⁹Department of Microscope Electron, Faculty of Medicine, Universitas Airlangga, Surabaya, Indonesia

¹⁰Department of Pathology Anatomy, Faculty of Medicine, Universitas Airlangga, Surabaya, Indonesia

¹¹Laboratory of Virology, Department of Microbiology and Immunology, Faculty of Veterinary Medicine, Universitas Airlangga, Surabaya, Indonesia

Address for correspondence Fedik Abdul Rantam, DVM, Jl. Ir H. Soekarno, Mulyosari, Campus C, Universitas Airlangga, Surabaya, Indonesia (e-mail: fedik-a-r@fkh.unair.ac.id).

Eur J Dent

Abstract

Objective Adipose-derived mesenchymal stem cells (ADMSCs) have great potential for regenerative medicine. These have been combined with biomaterials such as Bovine teeth that are preferred as a periodontal regeneration material. The main purpose of this study is to evaluate and analyze a biocompatibility test and osteogenic differentiation of bovine teeth scaffold seeded with ADMSCs in vitro.

Materials and Methods A true experimental study with post-test only group design was conducted. Random sampling and Lameshow's formula were used to determine the sample. The scaffold, obtained from bovine teeth as the bone graft material, was analyzed using 3- (4,5-dimethylthiazol-2-yl)-2,5-diphenyltetrazolium bromide (MTT) assay, and its attachment was evaluated by scanning electron microscopy (SEM) and micro-computed tomography with ADMSCs. ADMSCs attachment present in the bovine teeth scaffold was assessed using SEM at 1-hour, 12-hour, and 24-hour intervals. **Statistical Analysis** Analysis of variance was used to analyze the MTT assay results ($p < 0.05$) based on normality and homogeneity test ($p > 0.05$).

Results The highest viability of cells (97.08%) was found at a concentration of 10% by means of an MTT test ($p < 0.05$). The results of three-dimensional bovine teeth scaffold

¹⁷
DOI <https://doi.org/10.1055/s-0039-1694305>
ISSN 1305-7456.

©2019 Dental Investigation Society

License terms



Keywords

- ▶ adipose-derived mesenchymal stem cells
- ▶ bovine teeth
- ▶ scaffold
- ▶ tissue engineering

showed the average particle size to be 500 μm . ADMSCs cell attachment to the scaffold bovine teeth showed a significant increase in the number of cells attached after 24 hours compared with those at 1 and 12 hours. Alizarin red staining showed an increase in ADMSC osteogenic differentiation after it was combined with bovine teeth scaffold.

Conclusion The scaffold from bovine teeth is biocompatible and accelerates osteogenic differentiation of ADMSC.

Introduction

The tissue engineering technique incorporating the use of cells and growth factors combined with scaffold for periodontal tissue regeneration is currently gaining popularity. This technique utilizes biocompatible scaffold seeds with growth factor, stem cells, or both that are implanted into a site to stimulate the reformation or repair of the missing tissues.^{1,2} Bovine teeth have been the most widely employed substitutes for the human variety in dental research, with their use increasing over the past 30 years.^{3,4} As bone graft material, bovine teeth possess osteoinductive and osteoconductive properties responsible for the construction of new bones. The term "osteinduction" signifies that the grafted material is chemotactic to undifferentiated osteoprogenitor cells in the host and induces differentiation into osteoblasts. Osteoconduction is defined as a process that permits the growth of osteogenic cells from exposed bone surface into the adjacent graft material.^{5,6}

Bovine teeth are predominantly composed of inorganic material (70%), organic material (20%), and water (10%). The inorganic component is largely hydroxyapatite and organic content consisting of collagen type I and growth factor.^{7,8,9} The purpose of scaffolds is to support cell attachment and migration, while also providing growth factors to support tissue and bone formation. The combination of scaffold and stem cells for bone growth is synergic in character. The self-renewal abilities of stem cells and their capability to differentiate into multiple cell lineages render them promising candidates for cell-based tissue engineering. Adipose-tissue derived from adult stem cells is most commonly used for periodontal regeneration.¹⁰

Adipose-derived mesenchymal stem cells (ADMSCs) can be easily isolated, providing an enormous number of stem cells that are vital for tissue engineering and stem cells-based therapies.^{11,12} The International Society for Cellular Therapy set three minimum criteria for the definition of MSCs: plastic-adherence; expression of CD73, CD90, and CD105; and the absence of CD45, CD14, CD19, human leukocyte antigen - DR isotype (HLA-DR) expressions and their trilineage differentiation potential into osteoblasts, chondrocytes, adipocytes.^{13,14} Research into bovine teeth implantation in the calvarial defects of rats showed an increase in bone density after 6 weeks. Other research conducted by George et al state that umbilical mesenchymal stem cells demonstrate a tendency to differentiate and proliferate after binding to the tooth surface in vitro.^{15,16}

The purpose of this study is to analyze the osteogenic potential and biocompatibility test of bovine teeth scaffold seeded with ADMSCs in vitro.

Subjects and Methods

This study received ethical clearance (number 637-KE) from the Animal Care and Use Committee Faculty, Veterinary University of Airlangga, Surabaya, Indonesia. Three, 4-week-old, male Wistar rat subjects were sacrificed by euthanasia. Isolation of the ADMSCs of these subjects was performed by washing adipose tissue with saline phosphates containing 10% antimycotic-antibiotic agent. The adipose tissue was cut into pieces and immersed in a 0.2% collagenase type I (Worthington, Lakewood, New Jersey, United States) solution with the addition of Dulbecco's phosphate buffer saline (STEMCELL Technologies, Nucleos, Singapore) and agitated slowly for 40 minutes at 37°C. The tissue was filtered using a 10 μm mesh filter (Pluriselect; Leipzig, DE) before being centrifuged at 1,250 rpm for 4 minutes, with the supernatant subsequently discarded.¹⁷

Isolation and Culture of Adipose-Derived Mesenchymal Stem Cells ADMSCs

MSCs were cultured with α -modified minimum essential medium eagle (α MEM) (Gibco, Roskilde Denmark) plus 15% fetal bovine serum (Biowest; Missouri, United States), 2 mM of L-glutamine (Gibco), 100 mg/mL streptomycin (Gibco), 2.5 $\mu\text{g}/\text{mL}$ fungizone (Gibco), and 100 IU/mL penicillin (Gibco) before being incubated at 37°C with 5% CO₂. The cells were grown in six wells on a tissue culture plate at a concentration of 10⁷ in each well. The medium was changed on the 7th day and every 3 days thereafter. Observation of the cells was performed using an inverted microscope (80 \times magnification).¹³⁻¹⁸

Characterization ADMSCs by Immunocytochemical Staining and Flow Cytometry

A single cell subjected to a process of trypsinization was centrifuged, fixed with formaldehyde (TCI, Chuo-ku, Tokyo), and washed with PBS. FITC anti-rat CD105 monoclonal antibody (BioLegend, San Diego, California, United States) and FITC anti-rat CD45 monoclonal antibody (BioLegend) were mixed into the sample and incubated at 37°C for 45 minutes. Several drops of 50% glycerin (TCI, Chuo-ku, Tokyo) were then applied to glass objects and observed under a fluorescent microscope. During the trypsinization process, the single

cell was centrifuged. Thereafter, it was fixed in formaldehyde solution and closed with BSA. Cells were added to CD105 primary antibody and CD45 FITC. The fixed cells were analyzed by means of a FACSCalibur flow cytometer (Becton Dickinson, New Jersey, United States).¹⁹

Culture on Osteogenic Medium

MSC culture was separated using trypsin solution (Sigma, Singapore) and poured into a 24-well microplate (SPL, Gyeonggi-do, Korea) filled with osteogenic medium that contained α MEM medium (Gibco) with the supplementary addition of 50 μ g/mL of L-ascorbic acid (TCI, Chuo-ku, Tokyo), 10–8 M of dexamethasone (TCI, Chuo-ku, Tokyo and 10 mM of β -glycerophosphate (TCI, Chuo-ku, Tokyo) at a density of 2×10^5 and incubated at 37°C. The medium was replaced every 3 days for 21 days. After that period, the cells were fixed with 10% formaldehyde (TCI, Chuo-ku, Tokyo), rinsed with water to facilitate examination of the osteogenic differentiation, and, finally, stained with Alizarin red (Sigma, Singapore).²⁰

Preparation of Bovine Teeth

Bovine teeth were cleaned with peroxidase 3% for 1 week. The crowns and roots were subsequently separated by means of a bone cutter and rongeur forceps. Powder was produced by processing the teeth comprised of dentin and cementum tissue with a bone miller. The resulting products were filtered until the desired amount was obtained. The demineralization process was performed using a bone mineral removal method involving immersion in 1% hydrochloric acid (Merck, NJ, United States) for a day and thorough rinsing before being dried. Prior to storage, the protein content of the tooth was frozen (freeze dried = lyophilization). Particles 355 to 710 μ m in size were produced and sterilized in Batan, Jakarta, Indonesia.²¹ The bovine teeth particle shape was examined with an SEM at a magnification of 75 \times and 1,500 \times (Electron Microscope Laboratory, Faculty of Medicine, Universitas Airlangga Surabaya, East Java, Indonesia) before being scanned using micro-computed tomography (micro-CT) to observe the particle shape in three-dimensional (3D) (Faculty of Mathematics and Natural Science, Institut Teknologi Bandung West Java, Indonesia).

Micro-computed Tomography-based Investigation

The specimens were positioned in a horizontally rotating micro-CT scanning device holder (Bruker Micro-CT Sky-Scan 1173, High Energy Micro-CT, FMIPA ITB) before being scanned using a source X-ray voltage of 40 kV. The source current was 130 mA with an exposure time of 500 ms using a 1.0-mm aluminum filter. The sample was scanned through a 180° rotation with a rotation step of 0.2°. During image acquisition, 10 frames were averaged and the scanning process required approximately 2 hours per sample. By using a camera binning of 1 \times 1, the projection images produced were 2,240 \times 2,240 in dimension. The projection images were reconstructed as 8-bit gray scale images with isotropic spatial resolution of 5.7 μ m/pixel. A pre-reconstruction process, a ring artifact correction of 10, and beam hardening

correction of 20% were applied to enhance the reconstructed image quality.²³

Toxicity Testing

A toxicity test (MTT assay) of bovine teeth scaffold in relation to the cell culture of ADMSCs was performed using the following procedure. Bovine teeth scaffolds were immersed in μ MEM (Gibco) for 24 hours. The pellets were cultured in ninety-six 5×10^4 cells/well and incubated for 24 hours at 37°C at 5% CO₂ concentration. After 80% growth and incubation for 20 hours at 37°C and 5% CO₂, 200 μ L supernatant from bovine teeth scaffold and 25 μ L MTT (3-(4,5-dimethylthiazol-2-yl)-2,5-diphenyltetrazolium bromide) (Biotium, Fremont, California, United States) were added to each well and incubated for 4 hours at 37°C. They were subsequently observed under an inverted microscope. The color change in the wells was observed with an Elisa Reader at a wavelength of 595 nm.^{22,23}

Seeding of ADMSCs on Bovine Teeth Scaffold

Bovine teeth scaffolds were immersed in α MEM (Gibco) for 1 day, before the medium was removed and replaced with a new one. After 1 day, 5 mg of bovine teeth scaffold was inserted into 96-well culture, to which a medium suspension of 2×10^6 cells was added and incubated for an hour at a temperature of 37°C and 5% CO₂. More medium was added to each 1.3 mL/well and incubated at a temperature of 37°C and 5% CO₂. The tube was periodically agitated to ensure even cell distribution within the bovine teeth scaffold suspension. SEM observation was conducted after 1 day of seeding.²⁴

Statistical Analysis

All data were expressed as the mean and standard deviation (SD). The statistical analysis was performed using one-way analysis of variance. *p*-Value < 0.05 was considered statistically significant.

Results

In this research, bovine teeth scaffold seeded with ADMSCs was obtained. The characteristics of bovine teeth scaffold and the viability rate of the ADMSCs was examined using MTT assays. The ADMSC culture of the subjects is shown in **Fig. 1**. ADMSCs have the ability to adhere to culture plastic flasks, while they appeared, morphologically, as spindle-shaped cells both as scattered individuals and in small colonies. With regard to the expression of mesenchymal stem cell markers CD45 and CD105, based on observation under a fluorescence microscope (**Fig. 2**), it transpired that CD105 expression is much stronger than that of CD45. Characterization of MSCs with flowcytometry showed that the cells cultured were MSCs with a marked subpopulation of cells expressing more CD105 than CD45.

The proportion of subpopulations of MSCs cells expressing CD105 was more dominant at 99.63%, while that expressing CD45 accounted for only 0.37% (**Fig. 3**). The effect of the bovine teeth scaffold on the mineralization ability of

ADMSCs and the deposition of calcium and phosphate was confirmed by Alizarin red staining (→ Fig. 4). The morphological shape of bovine scaffold was observed in 3D using micro-CT with a particle size of 355 to 710 μm. → Fig. 5B shows the pore shape of the bovine teeth scaffold particles. Particle thickness distribution as estimated by means of 3D micro-CT had an average of ~96 μm, while the average particle size as determined during the process (→ Fig. 5) was 500 μm. The particle size (2D) can be estimated by calculating the area and perimeter of the previously clustered objects using a watershed process (→ Fig. 6). From the results of the study, the largest cell viability was obtained at a concentration of 10% with a mean ± SD (97.08 ± 12.67), concentration of 50% with mean ± SD (88.58 ± 12.38), and concentration of 100% with mean ± SD (76.64 ± 5.76) where $p < 0.05$ (→ Fig. 7). The attachment and proliferation of cells on bovine teeth scaffold were demonstrated within 1, 12, and 24 hours of incubation.

After 24 hours in culture, the number of cells in the bovine teeth scaffold was greater than that at 1 and 12 hours ($p < 0.05$) (→ Fig. 8).

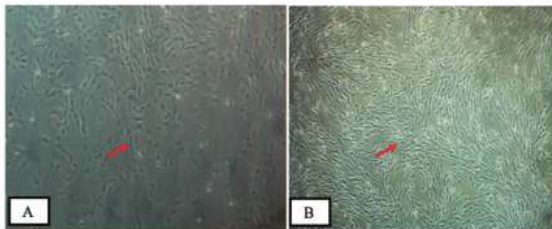


Fig. 1 Culture of adipose-derived mesenchymal stem cells (ADMSCs) showing fibroblast-like morphology and adherence to the plate: (A) Culture containing ADMSCs 1 day after isolation (passage 1) and (B) 15 days after isolation (passage 4) (inverted microscope at 200× magnification).

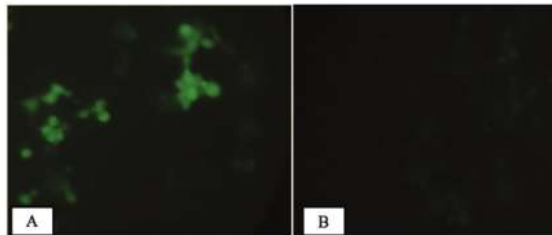


Fig. 2 The immunocytochemistry result showed that (A) adipose-derived mesenchymal stem cells are strongly expressed in CD105 and (B) weakly expressed in CD45 (immunofluorescence microscope at 200× magnification).

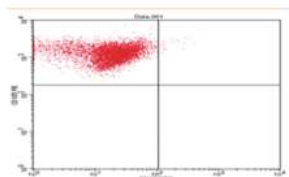


Fig. 3 Examination of flow cytometry indicating that the majority of mesenchymal stem cells subpopulations expressed more CD105 at ~99.63% (UL), while the minority subpopulations expressed around 0.37% (LL) of CD45.

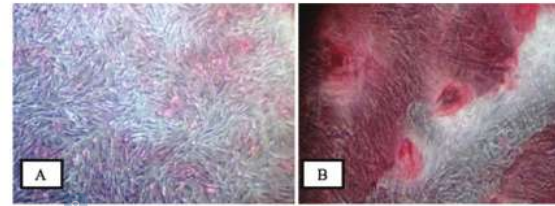


Fig. 4 Optical microscopy pictures showing the cultures stained with alizarin red. (A) Control cultured in a medium for 21 days. (B) Differentiation of adipose-derived mesenchymal stem cells as shown by positive alizarin red staining in osteogenic medium for 21 days (inverted microscope at 200× magnification).

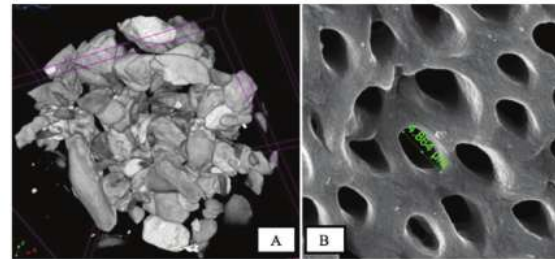


Fig. 5 (A) Bovine teeth scaffold with various particle sizes from 355 to 710 μm (micro-computed tomography photographs). (B) Scanning electron microscopy photographs of bovine teeth scaffold visible pores.

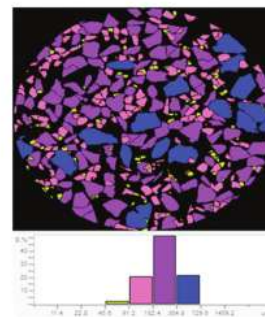


Fig. 6 Two-dimensional particle size distribution measured by the calculation of the major diameter. The majority of bovine teeth scaffold particles are 182 to 364 μm (purple).

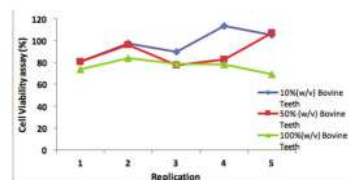


Fig. 7 Cell viability of the bovine teeth scaffold.

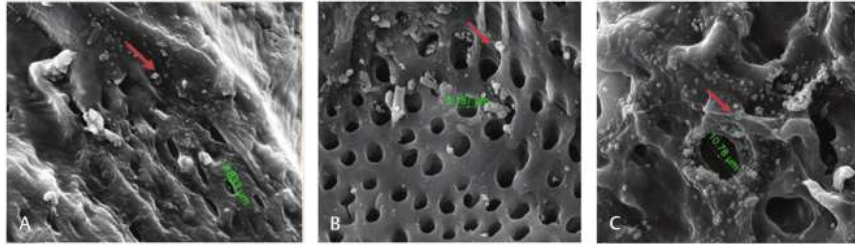


Fig. 8 Scanning electron microscopy micrographs showed adipose-derived mesenchymal stem cells seeding with bovine teeth scaffold at various time intervals: (A) 1, (B) 12, and (C) 24 hours of cells seeding DDM scaffold ($\times 5,000$ magnification). The arrow-marked region is the attachment point.

Discussion

The growth of ADMSCs can be subcultured up to 9 to 10 passages, after which the cells will degenerate.²⁵ ADMSCs are shown to be 80% confluent after three passages and form multilayers after 20 \times confluence.^{26,27} Periodontal tissue regeneration has also been successfully demonstrated in the experimental subject using ADMSCs.²⁸ Characterization of ADMSCs was confirmed MSCs by means of CD105 positive and CD45 negative. CD105 is a homodimer membrane glycoprotein associated with human vascular endothelium. CD45 is expressed in hematopoietic progenitors, the small vessel endothelium of many varieties of tissue, and represents a subset of bone marrow stromal cells.²⁹

The osteogenic differentiation of adipose-derived stem cells was initiated after as few as 4 days in the form of small nodules in isolated regions characterized by spindle-shaped cells at their perimeters. Electron microscope transmission of the osteogenic cells on day 21 of osteogenic culture showed nearly intact osteogenic progenitor cells. These are characterized by the cytoplasm that is abundant in the mitochondria, rough endoplasmic reticulum, oval-shaped mineralized calcium deposits, and the considerable numbers of collagen fibrils that are distinctive features of osteoblast differentiated cells.³⁰ Another study posited that osteogenic differentiation requires at least 28 to 38 days at which point calcified extracellular matrix are observable after staining with alizarin red.³¹ The results of these experiments indicate that bovine teeth scaffold plays a crucial role in stimulating ADMSCs mineralization potential.³²

Small pore size facilitates osteoblast cell proliferation, while lower porosity helps osteogenic differentiation in vitro. The structure of the newly formed bone correlated with the scaffold pore size where smaller pores support more trabeculae formation.³³ There are some factors that must be considered when designing a scaffold, such as pore size, as this will affect the nutrition diffusion and migration of cells throughout the scaffold, while also influencing the formation of a vascular network within the scaffold and integration with the vascular system of the surrounding tissues. Previous studies posited that collagen combined with demineralized bone powder with a particle size of 250 to 500 μm is suitable for osteoblast differentiation environments and potentially for bone tissue engineering.^{34,35}

An MTT assay is employed to evaluate the material cytotoxicity in tissue engineering and can indicate cell growth and proliferation. These results prove that bovine teeth scaffolds are not toxic and may be attached to and proliferate in the ADMSCs.³⁶ The HA content of bovine teeth helps improve the osteoconduction process. Inorganic materials, including HA, have also been used to promote periodontal regeneration. Hydroxyapatite can not only eliminate the morbidity of the donor site but also lead to granular migration and incomplete resorption.^{37,38} Previous studies have suggested that HA scaffold seeded with mesenchymal stem cells from bone marrow can improve the osteogenesis process in vivo.³⁹ Cells were attached and spread into the pores of the scaffold, being visibly attached to the scaffold approximately 1 hour after seeding (data not shown). This result indicates that a bovine teeth scaffold is suitable for cell environments and supports cell growth and proliferation in addition to cell differentiation.^{40,41}

Conclusion

The scaffold from bovine teeth is biocompatible and accelerates osteogenic differentiation of ADMSC.

Funding

The research was funded by doctoral dissertation research, Direktorat Jenderal Penguatan Riset dan Pengembangan, The Ministry of Research, Technology and Higher Education of The Republic of Indonesia (Kemenristekdikti RI letter of appointment agreement number 058.SP2H/LT/DRPM/2018).

Conflict of Interest

None declared.

Acknowledgments

The authors would like to thank Team Stem Cells Research and Development Centre, Universitas Airlangga; Laboratory of Animal Experimental Stem Cells Research and Development Centre, Universitas Airlangga; Postgraduate School, Faculty of Medicine, Universitas Airlangga; and the Micro-CT Laboratory (Bruker Micro-CT SkyScan 1173) of the Faculty of Mathematics and Natural Science, Institut Teknologi Bandung.

References

- 1 Amal SP, Yash M, Preeti N. Tissue engineering of craniofacial tissues—a review. *Regen Med Tissue Eng.* 2013;2(6):1–19
- 2 Siddhartha VA, Shartak B, Rashmi G, Shilpa S, Uzma B. Tissue engineering in periodontics—a novel therapy. *Ann Dental Res* 2012;2(1):01–07
- 3 Young-Kyun K. Bone graft material using teeth. *J Korean Assoc Oral Maxillofac Surg* 2012;38:134–138
- 4 Teruel JdeD, Alcolea A, Hernández A, Ruiz AJ. Comparison of chemical composition of enamel and dentine in human, bovine, porcine and ovine teeth. *Arch Oral Biol* 2015;60(5):768–775
- 5 de Oliveira GS, Miziara MN, Silva ER, Ferreira EL, Biulchi APF, Alves JB. Enhanced bone formation during healing process of tooth sockets filled with demineralized human dentine matrix. *Aust Dent J* 2013;58(3):326–332
- 6 Amini AR, Laurencin CT, Nukavarapu SP. Bone tissue engineering: recent advances and challenges. *Crit Rev Biomed Eng* 2012;40(5):363–408
- 7 Koga T, Minamizato T, Kawai Y, et al. Bone regeneration using dentin matrix depends on the degree of demineralization and particle size. *PLoS One* 2016;11(1):e0147235
- 8 Monthira S. Dentin as bone graft substitution. *Songklanakarin Dent J* 2014;2(1):21–27
- 9 Kim YK, Lee J, Um IW, et al. Tooth-derived bone graft material. *J Korean Assoc Oral Maxillofac Surg* 2013;39(3):103–111
- 10 Nassif L, El Sabban M. Mesenchymal stem cells in combination with scaffolds for bone tissue engineering. *Materials (Basel)* 2011;4(10):1793–1804
- 11 Baer PC, Werner L. Adipose-derived stromal/stem cells and their differentiation potential into the endothelial lineage. In: Jurgen H, Erhard H eds. *Adult and Pluripotent Stem Cells*. Köln, Germany: Springer; 2014:53–64
- 12 Lotfy A, Salama M, Zahran F, Jones E, Badawy A, Sobh M. Characterization of mesenchymal stem cells derived from rat bone marrow and adipose tissue: a comparative study. *Int J Stem Cells* 2014;7(2):135–142
- 13 Dominici M, Le Blanc K, Mueller I, et al. Minimal criteria for defining multipotent mesenchymal stromal cells. The International Society for Cellular Therapy position statement. *Cytotherapy* 2006;8(4):315–317
- 14 Cihho I, Ken S. *Mesenchymal Stem Cells for Regenerative Therapy: Optimization of Cell Preparation Protocols*. Hindawi Publishing Corporation BioMed Research International. 2014:1–11
- 15 Ibrahim H, Keyvan M, Ian MB, Patricio JON, Luiz AS. Evaluation of Osteoconductive and Osteogenic Potential of a Dentin-Based Bone Substitute Using a Calvarial Defect Model. *Hindawi Publishing Corporation International Journal of Dentistry*, 2012;1–6
- 16 George JP, Chakravarty P, Chowdhary KY, Purushothama H, Rao JA. Attachment and differentiation of human umbilical cord stem cells on to the tooth root surface with and without the use of fibroblast growth factor—an in vitro study. *Int J Stem Cells* 2015;8(1):90–98
- 17 Rada T, Gomes ME, Reis RL. A novel method for the isolation of subpopulations of rat adipose stem cells with different proliferation and osteogenic differentiation potentials. *J Tissue Eng Regen Med* 2011;5(8):655–664
- 18 Kamal D, Iskandriati I, Dilogo N, et al. Comparison of culture mesenchymal stem cell derived from bone marrow or peripheral blood of rats. *J Exp Integr Med* 2014;4(1):17–22
- 19 Martens W, Wolfs E, Struys T, Politis C, Bronckaers A, Lambrechts I. Expression pattern of basal markers in human dental pulp stem cells and tissue. *Cells Tissues Organs* 2012;196(6):490–500
- 20 Birmingham E, Niebur GL, McHugh PE, Shaw G, Barry FP, McNamara LM. Osteogenic differentiation of mesenchymal stem cells is regulated by osteocyte and osteoblast cells in a simplified bone niche. *Eur Cell Mater* 2012;23:13–27
- 21 Nather YN, Hilmi N. *Allograft Procurement Processing and Transplantation: A Comprehensive Guide for Tissue Bank*. Singapore: World Scientific Publishing Co. Pvt Ltd.; 2010:356–358
- 22 Ola SM. Preparation and characterization of hydroxyapatite from bovine teeth. *Nat Appl Sci* 2017;11(8):623–630
- 23 David BK, Purwati, Fedik AR, Ferdiansyah, Coen DP. Healing mechanism and osteogenic capacity of bovine bone mineral-human amniotic mesenchymal stem cell and autogenous bone graft in critical size mandibular defect. *J Biomed Sci Eng* 2015;8:733–746
- 24 Yaling S, Jerry NR, Adrain SB, Simon B, Brend LA. Adipose-derived stem cells combined with a demineralized cancellous bone substrate for bone regeneration. *Tissue Eng* 2012;18(13):1–9
- 25 Jin GZ, Park JH, Wall I, Kim HW. Isolation and culture of primary rat adipose derived stem cells using porous biopolymer microcarriers. *Tissue Eng Regen Med* 2016;13(3):242–250
- 26 Seyed JH, Hamed G, Ahmad G, Hamid RS, Majid GM, Elaheh M. Isolation characterization and differentiation of rat adipose tissue derived mesenchymal stem cells. *Int J Pediatr* 2014;2(Suppl 3):1–6
- 27 Uccelli A, Moretta L, Pistoia V. Mesenchymal stem cells in health and disease. *Nat Rev Immunol* 2008;8(9):726–736
- 28 Cao F, Liu T, Xu Y, Xu D, Feng S. Culture and properties of adipose-derived mesenchymal stem cells: characteristics in vitro and immunosuppression in vivo. *Int J Clin Exp Pathol* 2015;8(7):7694–7709
- 29 Kawashima N. Characterisation of dental pulp stem cells: a new horizon for tissue regeneration? *Arch Oral Biol* 2012;57(11):1439–1458
- 30 Hassan IHE, Mohamed AS, Soad AK, Omnia KRE. Adipose derived mesenchymal stem cell differentiation into adipogenic and osteogenic stem cells. *Stud Stem Cells Res Ther* 2011;2(1):17–24
- 31 Locke M, Windsor J, Dunbar PR. Human adipose-derived stem cells: isolation, characterization and applications in surgery. *ANZ J Surg* 2009;79(4):235–244
- 32 Li TX, Yuan J, Chen Y, et al. Differentiation of mesenchymal stem cells from human umbilical cord tissue into odontoblast-like cells using the conditioned medium of tooth germ cells in vitro. *BioMed Res Int* 2013; 2013 :1–10
- 33 Sundelacruz S, Kaplan DL. Stem cell- and scaffold-based tissue engineering approaches to osteochondral regenerative medicine. *Semin Cell Dev Biol* 2009;20(6):646–655
- 34 Thitiset T, Damrongsakkul S, Bunaprasert T, Leeanansaksiri W, Honsawek S. Development of collagen/demineralized bone powder scaffolds and periosteum-derived cells for bone tissue engineering application. *Int J Mol Sci* 2013;14(1):2056–2071
- 35 da Cruz GA, de Toledo S, Sallum EA, de Lima AF. Morphological and chemical analysis of bone substitutes by scanning electron microscopy and microanalysis by spectroscopy of dispersion energy. *Braz Dent J* 2007;18(2):129–133
- 36 Chen Q, Shou P, Zheng C, et al. Fate decision of mesenchymal stem cells: adipocytes or osteoblasts? *Cell Death Differ* 2016;23(7):1128–1139
- 37 Darby I. Periodontal materials. *Aust Dent J* 2011;56(Suppl 1): 107–118
- 38 Hidetoshi S, Eiji N, Hiroshi S, Masatsugu S. Possible functional scaffold for periodontal regeneration. *Jpn Dent Sci Rev* 2013;49:118–130

- 39 Li Z, Yossy M, Yanging W, Yayou L, Seeram R. Review scaffold design and stem cells for tooth regeneration. *Jpn Dent Sci Rev* 2013;9:14–26
- 40 Weiguang W, Guilherme C, William SA, et al. Enhancing the hydrophilicity and cell attachment of 3D printed PCL/graphene scaffold for bone tissue engineering. *Materials (Basel)* 2016;9(992):1–10
- 41 Supronowicz P, Gill E, Trujillo A, et al. Human adipose-derived side population stem cells cultured on demineralized bone matrix for bone tissue engineering. *Tissue Eng Part A* 2011;17(5–6):789–798

Osteogenic Differentiation and Biocompatibility of Bovine Teeth Scaffold with Rat Adipose-derived Mesenchymal Stem Cells

ORIGINALITY REPORT

14%

SIMILARITY INDEX

8%

INTERNET SOURCES

14%

PUBLICATIONS

0%

STUDENT PAPERS

PRIMARY SOURCES

- 1 Shinta Oktya Wardhani, Jonny Karunia Fajar, Laksmi Wulandari, Gatot Soegiarto et al. "Association between convalescent plasma and the risk of mortality among patients with COVID-19: a meta-analysis", F1000Research, 2021
Publication 1%
 - 2 pdfs.semanticscholar.org
Internet Source 1%
 - 3 Dwikora N. Utomo, Ferdiansyah Mahyudin, Kukuh D. Hernugrahanto, Heri Suroto, Muhammad Zaim Chilmi, Fedik Abdul Rantam. "Implantation of platelet rich fibrin and allogenic mesenchymal stem cells facilitate the healing of muscle injury: An experimental study on animal", International Journal of Surgery Open, 2018
Publication 1%
-

4

HIH El Sayyad. "Adipose Derived Mesenchymal Stem Cell Differentiation into Adipogenic and Osteogenic Stem Cells", Studies on Stem Cells Research and Therapy, 2016

Publication

1 %

5

Baer, Patrick C., and Werner Luttmann. "Adipose-derived Stromal/Stem Cells and Their Differentiation Potential into the Endothelial Lineage", Adult and Pluripotent Stem Cells, 2014.

Publication

1 %

6

Yaling Shi. "Adipose Derived Stem Cells Combined with a Demineralized Cancellous Bone Substrate for Bone Regeneration", Tissue Engineering Part A, 04/13/2012

Publication

1 %

7

Sundelacruz, S.. "Stem cell- and scaffold-based tissue engineering approaches to osteochondral regenerative medicine", Seminars in Cell and Developmental Biology, 200908

Publication

1 %

8

Tommaso Rada. "A novel method for the isolation of subpopulations of rat adipose stem cells with different proliferation and osteogenic differentiation potentials", Journal

1 %

of Tissue Engineering and Regenerative Medicine, 08/2011

Publication

9	www.freepatentsonline.com Internet Source	1 %
10	Kawashima, Nobuyuki. "Characterisation of dental pulp stem cells: A new horizon for tissue regeneration?", Archives of Oral Biology, 2012. Publication	1 %
11	www.tandfonline.com Internet Source	1 %
12	www.liebertpub.com Internet Source	<1 %
13	Venkata Lokesh Battula, Kurt William Evans, Brett George Hollier, Yuexi Shi et al. "Epithelial-Mesenchymal Transition-Derived Cells Exhibit Multilineage Differentiation Potential Similar to Mesenchymal Stem Cells", STEM CELLS, 2010 Publication	<1 %
14	sabre.lib.sussex.ac.uk Internet Source	<1 %
15	"OS11: Critical Care Medicine 2 : Oral Sessions", Respirology, 2013. Publication	<1 %

16

Safitree Nawae, Jirut Meesane, Nantakan Muensit, Chalongrat Daengngam. "Layer-by-layer self-assembled films of silk fibroin/collagen/poly (diallyldimethylammonium chloride) as nucleating surface for osseointegration to design coated dental implant materials", *Materials & Design*, 2018

Publication

<1 %

17

pt.scribd.com

Internet Source

<1 %

18

tessera.spandidos-publications.com

Internet Source

<1 %

19

Fitri, L A, V Asyana, T Ridwan, F Anwary, H Soekersi, F D E Latief, and F Haryanto. "Dual energy micro CT SkyScan 1173 for the characterization of urinary stone", *Journal of Physics Conference Series*, 2016.

Publication

<1 %

20

Iane Souza Nery-Silva, Gabriela Rover, Maybell Tedesco, Lucas da Fonseca Roberti Garcia et al. "Effect of Bleaching and Ca(OH)₂ Dressing on the Bond Strength of Fiberglass Posts to Root Dentine", *European Journal of Dentistry*, 2019

Publication

<1 %

21

Ping Shi, Jia Tian, Brittany Ulm, Julianne Mallinger, Habibeh Khoshbouei, Loic Deleyrolle, Matthew R Sarkisian. "Tumor Treating Fields Suppression of Ciliogenesis Enhances Temozolomide Toxicity", Cold Spring Harbor Laboratory, 2021

Publication

<1 %

22

Pong PONGPRUEKSA, Pisol SENAWONGSE, Nataya VONGPHAN. "Effect of dentinal tubule orientation on the modulus of elasticity of resin-infiltrated demineralized dentin", Dental Materials Journal, 2014

Publication

<1 %

23

Xu Qin, Fang Zou, Weimin Chen, Yiwen Xu, Bo Ma, Zhibin Huang, Guangxun Zhu, Bin Zhou. "Demineralized Dentin as a Semi-Rigid Barrier for Guiding Periodontal Tissue Regeneration", Journal of Periodontology, 2015

Publication

<1 %

24

theses.gla.ac.uk

Internet Source

<1 %

25

Liangming Zhang, Peiqiang Su, Caixia Xu, Junlin Yang, Weihua Yu, Dongsheng Huang. "Chondrogenic differentiation of human mesenchymal stem cells: a comparison between micromass and pellet culture systems", Biotechnology Letters, 2010

Publication

<1 %

26

Yannan Zhao. "Crosslinked Three-Dimensional Demineralized Bone Matrix for the Adipose-Derived Stromal Cell Proliferation and Differentiation", Tissue Engineering Part A, 01/2009

Publication

<1 %

Exclude quotes Off

Exclude matches < 10 words

Exclude bibliography On

Osteogenic Differentiation and Biocompatibility of Bovine Teeth Scaffold with Rat Adipose-derived Mesenchymal Stem Cells

GRADEMARK REPORT

FINAL GRADE

/100

GENERAL COMMENTS

Instructor

PAGE 1

PAGE 2

PAGE 3

PAGE 4

PAGE 5

PAGE 6

PAGE 7