

MALAYSIAN JOURNAL OF
Medicine and Health Sciences
Vol. 17 No. SUPP2, APRIL 2021
Supplementary Issue:
THE 4th INTERNATIONAL
CONFERENCE POSTGRADUATE
SCHOOL UNIVERSITAS AIRLANGGA:
UPDATE MANAGEMENT IN COVID-19
(ICPSUA)

MALAYSIAN JOURNAL OF

Medicine and Health Sciences

Vol. 17 No. SUPP2 / April 2021
Supplementary Issue:
THE 4th
INTERNATIONAL
CONFERENCE
POSTGRADUATE
SCHOOL
UNIVERSITAS
AIRLANGGA:
UPDATE
MANAGEMENT IN
COVID-19 (ICPSUA)

Malaysian Journal of Medicine and Health Sciences Vol. 17 No. SUPP2, APRIL 2021



Faculty of Medicine and Health Sciences
Universiti Putra Malaysia
43400 UPM Serdang
Selangor Darul Ehsan
Malaysia
<http://medic.upm.edu.my/>

UPM Press
Universiti Putra Malaysia
43400 UPM Serdang
Selangor Darul Ehsan
Malaysia
<http://penerbit.upm.edu.my>

PENERBIT
UPM
PRESS



A scientific journal published by Universiti Putra Malaysia Press

C9

About the Journal

The Malaysian Journal of Medicine and Health Sciences (MJMHS) is published by the Faculty of Medicine and Health Sciences, Universiti Putra Malaysia. The main aim of the MJMHS is to be a premier journal on all aspects of medicine and health sciences in Malaysia and internationally. The focus of the MJMHS will be on results of original scientific research and development, emerging issues and policy analyses pertaining to medical, biomedical and clinical sciences. The Malaysian Journal of Medicine and Health Sciences is now indexed in the following data bases: Scopus, EBSCOhost, ISC, and Rubriq.

Editorial Board

Editor in Chief:

Prof. Dr. Normala Ibrahim

Members:

Prof. Dr. Rukman Awang Hamat

Prof. Dr. Christopher LimThiamSeong

Assoc. Prof. Dr. Rajesh Ramasamy

Assoc. Prof. Dr. Sharmili Vidyadaran

Assoc. Prof. Dr. Sethu Thakachy Subha

Assoc. Prof. Dr. Loh Su Peng

Assoc. Prof. Dr. Nor Afiah Mohd Zulkeffi

Assoc. Prof. Dr. Wan Aliaa Wan Sulaiman

Assoc. Prof. Dr. Ling King Hwa

Assoc. Prof. Dr. Habibah Abdul Hamid

Assoc. Prof. Dr. Zubaidah Nor Hanipah

Assoc. Prof. Dr. Ching Siew Mooi

Assoc. Prof. Dr. Intan Hakimah Ismail

Assoc. Prof. Dr. Ho Yu Bin

Assoc. Prof. Dr. Karmegam Karuppiah

Assoc. Prof. Dr. Subapriya Suppiah

Lead Guest Editor:

Dr. Dian Agustin Wahjuningrum

Guest Editors:

Dr. Hendrik Setia Budi

Dr. Galih Sampoerno

Dr. Theresia Indah Budhy

Technical Coordinator:

Dr. Tan Kit Aun

International Advisory Board

Prof. Dr. Pierce Anthony Grace

Prof. Dr. David Isaacs

Prof. Dr. P. Ronan O'Connell

Prof. Dr. Graham Alexander Mc Gregor

Prof. Dr. Tan Ser Kiat

Prof. Dr. Gregory Y.H. Lip

Prof. Dr. Roger Pepperell

**Malaysian Journal of
Medicine and Health Sciences
Vol. 17 SUPP2, April 2021**

Contents

ORIGINAL ARTICLES

| | |
|---|----|
| Gonial Angle of Healthy Young Males and Females in Indonesia: A Study Using the Facial Photometry <i>Rudi Irawan, Viskasari P. Kalanjati, Peppy Nawangsasi, Risdiansyah, Abdurachman</i> | 1 |
| Malondialdehyde (MDA) Levels on Mice Atopic Dermatitis Treated with Pearl Grass (<i>Hedyotis corymbosa</i> (L.) Lamk) Extract Cream <i>Dinda Eka Putri, Atin Supiyani, Adina Novia Permata Putri, Enik Mushonnifah</i> | 5 |
| Correlation of Hand Grip Strength and Body Height Amongst Young Adults in Indonesia <i>Peppy Nawangsasi, Viskasari P. Kalanjati, Rudi Irawan, Risdiansyah, Ni Wajan Tirthaningsih</i> | 9 |
| The Leukocyte Profile, Histopathology and Molecularly Characteristics of Rabbits Scabies From East Java, Indonesia <i>Nunuk Dyah Retno Lastuti, Lucia Tri Suwanti, Anwar Ma'arif, Amirotul Azhimah, Putri Pelangi Noor Aina Zahro</i> | 13 |
| Growth and Penicillin Activities Resulted by <i>Penicillium chrysogenum</i> in Tomato (<i>Solanum Lycopersicum</i> L.) Juice <i>Anasthasia Cindy Ayuningtyas</i> | 16 |
| Correlation Between the Knee Height and Pulse Pressure in the Young Adults <i>Risdiansyah, Viskasari P. Kalanjati, Peppy Nawangsasi, Rudi Irawan, Abdurachman</i> | 19 |
| Antimitotic Activity of Pigeon Pea Filtrates (<i>Cajanus cajan</i>) to Sea Urchin (<i>Diadema antillarum</i>) Embryonic Cells <i>Maulia Hardian Hayati, Erna Kristinawati, Ida Bagus Rai Wiadnya</i> | 23 |
| Effect of Ozone-induced Diode Laser of Photodynamic Inactivation on <i>Pseudomonas aeruginosa</i> <i>Suryani Dyah Astuti, Wahyu Intan Pratiwi, Nur Anisah Tanassatha, Kartika Anggraini Afamsyah, Yunus Susilo, Miratul Khasanah</i> | 27 |
| The Effectiveness of Dry and Wet Teeth-brushing Technique Using 1.5% Enzyme Toothpaste as Plaque Prevention <i>R.P. Arief Rakhman, Heru Hananto, Theresia Indah Budhy, Ernie Maduratna S</i> | 33 |
| The Association Between Individual Characteristics, Personal Hygiene, and Environmental Sanitation to Pediculosis Capitis in Students of Mentokok Elementary School, West Praya, Central Lombok <i>Ari Kurniawati, Nurul Inayati, Lalu Srigede</i> | 36 |
| Analysis of the Cellular and Humoral Immune Response (IgG, CD4) in Rabbits Immunized with the Antigenic Protein of <i>Leucocytozoon caulleryi</i> <i>Dony Chrismanto, Miyayu Soneta Sofyan, Ira Sari Yudaniyanti</i> | 41 |
| Effect of Temperature on Viability of Normal Flora Bacteria (<i>Escherichia coli</i> and <i>Staphylococcus aureus</i>) <i>Anis En Nabiilah, Yunan Jiwintarum, Erlin Yustin Tatontos</i> | 44 |
| Alteration in Organic Elements of Sediment in Delayed Examinations of Alkaline pH Urine Sample using Conventional Method <i>Heribertus Agustinus B Tena, Jenny Sunariani, Ahmad Yudianto, Budi Santosa, Tulus Ariyadi</i> | 48 |
| Kinship Analysis on Paternity Test Through Str Codis Locus [CSF1PO, TH01, TPOX & vWA] From Maduranese Siblings in Surabaya <i>Ahmad Yudianto, Agung Sosiawan, Fery Setiawan, Reni Sumino</i> | 53 |
| Differences of Height Estimation Using Karl Pearson Formulation and Calculation of Multiplication Factor Using Trotter and Glesser Formulation <i>Ade Nahdia Nandarini, Anggraeni Puspitasari, Ahmad Yudianto</i> | 57 |
| The Relationship Between Protein Intake and Vitamin D With the Quality of Life of the Elderly <i>Ivan Panji Teguh, Difiyah Hanim, Suminah Suminah</i> | 61 |
| Comparing the Degree of Direct Sputum Atb Smear-Positive With the Sedimentation in Patients Suspected of Pulmonary Tuberculosis <i>Wiwit Sulistyamsi, Almurdji, Renowati</i> | 65 |
| Description of Erythrocyte Morphology With Blood Smear Method of Giemsa Staining in Patients at the Thalassemia Patients Parents Association Indonesia (TPPAI) Kediri <i>Mutia Hariani Nurjanah, Zuyyina Fihayati, Wiwik Yuli Setiawati</i> | 66 |
| Antibacterial Activity and Phytochemical Analysis of Ethanolic Purple Leaf Extract (<i>Graptophyllum Pictum</i> L. griff) on <i>Lactobacillus Acidophilus</i> <i>Devi Eka Juniarti, Tuti Kusumaningsih, Adioro Soetojo, Eric Priyo Prasetyo, Yulianti Kartini Sunur</i> | 71 |
| Fat Suppression Spectral Adiabatic Inversion Recovery (SPAIR) to Optimize the Quality of MRI Pelvis Image <i>Akhmad Muzamil, Suryani Dyah Astuti, Kamelia, Suhariningsih</i> | 74 |
| Combination of Curcumin Photosensitizer With Laser Diode to Reduce Antibiotic Resistant Bacterial Biofilms <i>Selvy Wikan Ganini, Suryani Dyah Astuti, Idha Kusumawati, Yunus Susilo</i> | 78 |
| Correlation Between Eosinophil to Leukocyte Ratio (ELR) and HbA1c in Type 2 Diabetes Mellitus Patients <i>Elfrida Melisa Ngamal, Maria Immakulata Diah Pramudianti, Edy Prasetya</i> | 82 |

| | |
|--|-----|
| Molecular Detection of Entamoeba Spp in Long-tailed Macaque (<i>Macaca Fascicularis</i>) at Baluran National Park, Indonesia <i>Nunuk Dyah Retno Lastuti, Lucia Tri Suwanti, Poedji Hastutieik, Dyah Ayu Kurniawati, Heni Puspitasari</i> | |
| DNA Purity and Concentration Analysis From Toothpick as the Evidence for Forensic Examination <i>Beta Novia Rizky, Mieke Sylvia Margaretha Amiatun Ruth, Ahmad Yudianto</i> | 89 |
| The Relationship Between Diet Pattern and Gastritis Prevalence in Nursing Semester II Study Program Students <i>Mohammad Abdul Rahman Usman, Reinaldy Octavianus Yan Dimpudus, Ledy Ana Zulfatunnadiroh, Rachmadita Yoga Pratiwi, Azizah Sastrawati Paneo, Chairil Anjasmara Robo Putra</i> | 92 |
| The Role of Moringa Oleifera L. Leaves Extract in Increasing Caspase 3 Expressions in Carcinoma of Oral Squamous Cells <i>Sawitri Dwi Indah Pertami, Theresia Indah Budhy</i> | 95 |
| Relationship of Therapeutic Communication And Healing Between Nurse and Patient <i>Achmad Faisol, Ahmad Yudianto, Hartono Kahar, Suryani Dyah Astuti</i> | 99 |
| Anti Immunogenicity Evaluation of Bovine Demineralized Dentine Membrane Material <i>Pratiwi Soesilawati, Tantiara, Annisa Zahra</i> | 103 |
| Transparent Collagen Soap From Shellfish (<i>Anadara Granosa</i>) With Additional Oils From Olae Plant (<i>Etlingera Calophrys</i>) (k.schum.) a.d.poulsen <i>Wd. Syafitri Salsabila, Yusuf Ahmad Husein, Zainal Rahmadsyah, Rahmania, La Ode Ahmad Nur Ramadhan, Alimin</i> | 106 |
| Description of Hematocrit in Malaria Tropica (<i>Plasmodium falciparum</i>) Patients at Jayapura Regional General Hospital <i>Marselaonety La'lang, Theresia Indah Budhy, Rini Prastyawati</i> | 111 |
| The Relationship Between Energy Intake and Fat Intake With Fine Motor Skill in Infants Aged 6-11 Months <i>Catur Retno Lestari, Harsono Salimo, Adi Magna Patriadi Nuhriawangsa</i> | 115 |
| Mapping Survey of Community Satisfaction at an Academic Hospital in Surabaya <i>Cita Rosita Sigit Prakoeswa, Anang Endaryanto, Tri Wahyu Martanto, Joni Wahyuhadi, Thinni Nurul Rochmah, Moses Glorino Rumambo Pandin</i> | 119 |
| The Physical Symptoms and Risk Factors of COVID-19 Among Academic Community During the Large-scale Social Restriction Period in the Faculty of Medicine UPN Veteran Jakarta <i>Nunuk Nugrohowati, Melly Kristanti, Muhammad Fiki Fauzan, Abdul Kolib</i> | 123 |
| The Effect of Combination of Classical Music Therapy and Breathing Exercise Towards the Stress and Cortisol Level in Hemodialysis Patients in Dr. Mm. Dunda Regional Public Hospital in Limboto Gorontalo Regency <i>Meggy Wulandan Kai, Rahayu Anggraini, Khamida, Wesiana Heris Santy</i> | 127 |
| Antibacterial Activity of Ethanolic Extract of Morel Berry (<i>Physalis angulata L.</i>) towards <i>Staphylococcus aureus</i> <i>Heru Hananto, Arief Rahman, Muhammad Fahmi</i> | 132 |
| REVIEW ARTICLES | |
| Dexamethasone for Covid-19: A Literature Review <i>Endah Sekar Palupi, Nurul Faiza, Chairil Anjasmara Robo Putra</i> | 136 |
| New Normal to Achieve High Threshold Herd Immunity by (Ro and Pc) Post Pandemic COVID-19 <i>Fery Setiawan, Ahmad Yudianto, Jenny Sunariani, Latief Mooduto</i> | 141 |
| The Role of MMP-1 Gene in the Osseointegration of Dental Implant <i>Mega Moeharyono Puteri, Andra Rizqiawan, Pratiwi Soesilawati</i> | 146 |
| The Dual Effects of Capsaicin: Benefits or Disadvantages? <i>Jenny Sunariani</i> | 150 |
| Pitfalls in the Diagnosis or Screening of COVID-19 Cases Based on Antibody Detection: Review and Solution <i>Yan Fuana, RP. Arief Rakhman, Gatot Soegiarto, Theresia Indah Budhy</i> | 153 |
| Achieving Behaviour Change in COVID 19 Pandemic: Lessons Learnt From Cancer Prevention and Antibiotic Stewardship Programs Based on Social Cognition Framework <i>Fransiscus Arifin, K. Kuntaman</i> | 157 |
| Challenges of Dentistry in Coronavirus Pandemic <i>Yessy Andriani Fauziah, Mohamad Rulianto, Deka Bagus Binarsa</i> | 162 |
| Potential of IL-10 as Targeted Therapy in Severe COVID-19 Patients <i>Nur Fadhilah, Gatot Soegiarto, Theresia Indah Budhy</i> | 165 |
| T2R38 Taste Receptors Can Be Affected by Cancer <i>Ayuningtyas Wahyu Nurani, Jenny Sunariani, Willy Sandhika, Theresia Indah Budhy</i> | 169 |

CASE REPORTS

| | |
|--|-----|
| Death Due to Violence and Sharp Force Injury on the Neck: A Case Report <i>Puji Rahayu, Ahmad Yudianto</i> | 174 |
| Death Caused by the Blunt Trauma on The Prisoner's Chest: A Case Report <i>Edwin Tambunan, Ahmad Yudianto, Galih Endradita</i> | 177 |
| Medico-legal Neck Stab Wound on Deadly Masseur: A Case Report <i>Vernando Parlindungan, Puji Rahayu, Sudjari Solichin</i> | 180 |
| An Autopsy Review of Liver Injuries Resulting From Blunt Trauma: Case Report <i>Desy Martha Panjaitan, Ahmad Yudianto, Tutik Purwanti</i> | 183 |
| Natural or Unnatural Death in COVID-19 Pandemic? A Case Report <i>Ria Kumala, Ahmad Yudianto, Tia Maya Affrita</i> | 186 |
| A Case Report of Extratamial Child Homicide <i>Ma'rifatul Ula, Abigael Samsi Pagatiku, Ahmad Yudianto</i> | 189 |

ORIGINAL ARTICLE

Molecular Detection of *Entamoeba* Spp in Long-tailed Macaque (*Macaca Fascicularis*) at Baluran National Park, Indonesia

Nunuk Dyah Retno Lastuti¹, Lucia Tri Suwanti¹, Poedji Hastutiek¹, Dyah Ayu Kurniawati², Heni Puspitasari³

¹ Department of Veterinary Parasitology, Faculty of Veterinary Medicine, Universitas Airlangga, 60286 Surabaya, Indonesia

² Magister Student of Faculty of Veterinary Medicine, Universitas Airlangga, 60286 Surabaya, Indonesia

³ Institute of Tropical Disease, Universitas Airlangga, 60286 Surabaya, Indonesia

ABSTRACT

Introduction: Baluran National Park (BNP) is one of the oldest national parks in Indonesia. Due to its natural beauty, BNP is also the highest number of tourists in Indonesia. *Macaca fascicularis* is one of the species that has a high population abundance in several park locations. Several species of *Entamoeba* have been reported as pathogenic and non-pathogenic to humans and Non-human primates (NHP). The aim of this research was to detect gen 18 SSU rDNA of *Entamoeba* spp in long-tailed macaque at Baluran National Park. **Methods:** A total 100 faecal samples of *Macaca fascicularis* taken from BNP, Indonesia. Samples were purified with sugar flotation methods, and extracted the DNA using DNAzol. For molecular identification of *Entamoeba* spp, using primer pairs *Entamoeba*-specific primers, including Entam1 (5-GTT GAT CCT GCC AGT ATT ATA TG-3) and Entam2 (5-CAC TAT TGG AGC TGG AAT TAC-3), have been designed by Verweij et al. Amplification is carried out 5 min at 95° C; 40 denaturation cycles of 30 s, 95° C; 30 s for annealing at 57° C, and 30 s for extension at 72° C, with a final step of 2 min at 72°C. **Results:** The prevalence of *Entamoeba* spp. based on PCR examination was 53% (53/100). The PCR products from *Entamoeba* spp. isolates from *Macaca fascicularis* produced bands of around 600 bp with 2% agarose gel electrophoresis. **Conclusion:** there was a high prevalence of *Entamoeba* spp in *Macaca fascicularis* in BNP, and *E. coli* were identified with 18 SSU rDNA genes.

Keywords: *Entamoeba* spp., *Macaca fascicularis*, Baluran National Park, Indonesia

Corresponding Author:

Nunuk Dyah Retno Lastuti, Drh
Email: nunukdyah53@gmail.com
Tel: (+62) 31 5041566

INTRODUCTION

Entamoeba spp is a parasite that infests Non-human primates (1,2,3). Several species of *Entamoeba* have been reported as pathogenic and non-pathogenic to humans and Non-human primates (NHP) (4,5). Although most of the *Entamoeba* species are known as non-pathogenic, concern should be taken to *Entamoeba* histolytica because this species can induce amoebiasis both human and NHP (6,7). In severe cases *E. histolytica* can cause hemorrhagic dysentery, liver ulcers, extra-intestinal lesions, even death (8,9). Amoebiasis reported as the second cause of death induced by parasitic disease in humans, Around the world approximately 35–50 million symptomatic cases and 100,000 human deaths was reported annually (3,10). In Indonesia, many intestinal amoebiasis is found endemically with a fairly high

incidence, ranging from 10–18%. Based on the results of routine examination of stool specimens of patients visiting the hospital with symptoms of diarrhea, it is known that 39.6% are amoebic dysentery (11).

Regarding Genus *Entamoeba*, in recent study, six species (*E. histolytica*, *E. dispar*, *E. moshkovskii*, *E. hartmanni*, *E. coli* and *E. polecki*-like organisms) recorded in NHP in Belgium and Netherland (12). The clinical relevance of *Entamoeba* spp. is more difficult to ascertain in NHP. Several species are considered non-pathogenic, while *E. histolytica* and its virulent variant *E. nuttalli* are known to provoke severe and sometimes lethal intestinal and extra-intestinal disorders in monkeys and apes (3,4,13).

There are various methods to detect *Entamoeba* spp. Morphologic identification is the inexpensive methods but low sensitivity and specificity. In the diagnosis of *E. histolytica*, it's difficult to differentiate between *E. dispar* and *E. moshkovskii*. Therefore, researchers suggest using both morphologic and molecular identification (15).

Baluran National Park (BNP) is one of the oldest national parks in Indonesia. Due to its natural beauty, BNP is also one of the national parks with the highest number of tourists in Indonesia. Long-tailed macaque (*Macaca fascicularis*) is one of the species that has a high population abundance in several park locations. Since a decade ago, close interaction between human and long-tailed macaques has arisen due to excessive feeding by tourists. These made the distance between the long-tailed macaque and humans getting closer which increased the risk of zoonosis (16). Identifying *Entamoeba* spp in Macaque *fascicularis* based on molecular identification have not been evaluated in BNP and the epidemiology is still unclear. Thus, the aim of this research was to detect *Entamoeba* spp in long-tailed macaque at Baluran National Park. This research attempted to analyze potential zoonosis.

MATERIALS AND METHODS

Ethical approval

This Research was permitted by Baluran National Park (Approval Letter Number SL.794/T.37/TU/KSA.6/9/2018) and IACUC with the ethical clearance No. 2.KE.001.01.2019 under the guidance of Ethical Clearance Commission Faculty of Veterinary Medicine, Universitas Airlangga.

Study and sites samples

BNP is located in the District of Banyuputih, East Java, Indonesia. It spans over 25,000 ha and located at 7°55'17.76S and 114°23'15.27E. BNP contains a range of habitats, ranging from savannah, mangroves, swamp forest, coastal forest, sub-montane forest (primary), monsoon evergreen forest, sea-grass beds and coral reefs. The climate is dominated by 9 months dry season with less than 60 mm rainfall and 3 months of the rainy season. A Total 100 faecal samples of long-tailed macaque taken from Bama beach and Bekol savanna in Baluran National Park. These two sites of tourism have high human-macaque interaction. Faecal samples collected opportunistically and non invasive from the soil immediately after defecation. All samples were collected from fresh dung (<8 hours). Collection samples were taken during August-September 2019. Samples analyzed with sugar flotation methods and purified based on Matsubayashi et al (17).

PCR and sequencing

We extracted the DNA of faecal samples using DNAzol (Ohio, USA) according to the manufacturer's recommended procedures. For identification of *Entamoeba* spp, diagnostic fragments were amplified using primer pairs *Entamoeba*-specific primers, including Entam1 (5-GTT GAT CCT GCC AGT ATT ATA TG-3) and Entam2 (5-CAC TAT TGG AGC TGG AAT TAC-3), have been designed by Verweij et al. (18). These genus-specific primers can be used to

amplify the 18S SSU rDNA of *E. polecki*, *E. chattoni*, *E. moshkovskii*, *E. dispar*, *E. histolytica*, *E. hartmanni*, *E. coli*, and *E. nuttalli*. In this study, the amplification reaction was performed in a 25µl solution consisting of 12.5 µl of Bioline Mastermix (Bioline, Taiwan), 10 pmol of each primer, 8.5 µl distilled water and 2 µl of the DNA template. Amplification involved 5 min at 95°C, followed by 40 denaturation cycles of 30 s at 95°C, 30 s for annealing at 57°C, and 30 s for extension at 72°C, with a final step of 2 min at 72°C. The positive sample will be appear band in 600bp.

RESULTS

A Total of 100 faecal samples were analyzed microscopically for parasite, and *Entamoeba* spp. was found in 53% (53/100) samples both microscopically and molecular examination. The positive samples showed a band in 600bp (Figure 1). *Entamoeba* spp has been reported in different prevalence around the world. *Entamoeba* is the most common protozoan infections observed in NHP (2,3). This is the first data of *Entamoeba* spp. in wild long tailed Macaque at National Park in Indonesia based on molecular detection. The prevalence of *Entamoeba* spp. in this study based on molecular examination was 53% (53/100). Results from sequencing only found *E. coli* in faecal samples. Based on a report from Levecke et al (12), the prevalence of *Entamoeba* spp. among Old World monkeys ranging from 30% and 100% and among apes ranging from 0% and 100%. We found moderate prevalence of *Entamoeba* infection in Long tailed macaque in Baluran National park. The moderate prevalence of *Entamoeba* spp. in the macaque at BNP have similar results from fromosan rock macaque in Taiwan (19). In another study, *Entamoeba* spp. was reported in Celebes Crested Macaque at Sulawesi with prevalence in 97% (20). In North-West India, *Entamoeba* spp. were found in 79% of wild rhesus macaques samples (21). High prevalence of *Entamoeba* spp. also reported in 94% of long-tailed macaque in China (22). Research from Zanzani et al (23) in long tailed macaque showed prevalence of *Entamoeba* spp. around 85%.

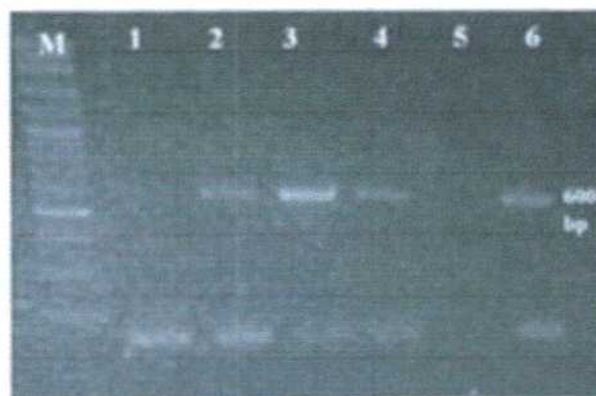


Figure 1 : PCR product of *Entamoeba* spp band 600bp (M:Marker, 1-6: Samples)

According to Nunn and Altizer (24), high prevalence of parasites could be found in the long-tailed macaque because of their social behavior and high population in one group. This is somehow lower compared to other research. The relatively low prevalence might be due to season, shedding intensities of individuals, geographic condition, source of feeds and feeding behaviour of macaque (25,26). The other studies reporting higher prevalence almost come from captive macaque or rural areas. That might be an infection rate higher.

DISCUSSION

Sequencing only identified *Entamoeba coli* in this study. Sample were not identified with *Entamoeba dispar*, *Entamoeba histolytica*, *Entamoeba moshkovskii*, *Entamoeba chattoni*, *Entamoeba nuttalli* and *Entamoeba hartmanni*. Although, that did not mean that other *Entamoeba* species didn't infect macaque because each sequencing result only can identify one species. Research from Debenham et al (21) in wild rhesus macaques showed that *E. chattoni*, *Entamoeba histolytica* nonhuman primate variant, *E. dispar* and *E. moshkovskii* have been identified. Feng et al (1) only found three species of *Entamoeba* i.e. *E. coli*, *E. chattoni*, and *E. dispar* in macaque. Another study from Chang et al (19), has identified *E. coli*, *E. chattoni*, *E. hartmanni*, and *E. nuttalli* in macaque in Taiwan. Few *Entamoeba histolytica* infections had been in the Philippines (4), Belgium (9), Netherlands (12), and China (28). Although only *E. coli* was detected in this study and was universally accepted as nonpathogenic, it was also detected in humans.

Tourists or local residents may be at risk of infection through water and food contamination. Density of Long tailed macaque in BNP was recorded by Hansen et al (16). There are 417 individuals in the four focal groups (in the research area) utilized an estimated home range averaging 1.75km² /group, with an average density of 59 individuals/km² /group and a maximum group size of 180 individuals. The average group size consisted of 104 individuals/group. Actually the density of Long tailed macaque was not too high, but food provisioning made concentration of long tailed macaque in this tourist site high and that may increase the frequency of contact between humans and macaques. The primary potential *Entamoeba* transmission pathways are waterborne, fecal-oral, and contact between humans and NHPs. Waterborne transmission of *Entamoeba* due to contaminated drinking water or poor public water systems has been reported worldwide (27). Actually the report of *Entamoeba* spp infection from NHP to human is still not clear. Although several study reported cases. Sargeant et al. reported eight human cases infections with *E. chattoni* using isoenzyme analysis (29). From that cases, Human records had contact with temple monkeys

during a visit to India. Verveijj et al (30) also found *E. chattoni*-like cysts from humans, but it is not clear whether the infections originated from contact with monkeys. An accidental infection of *E. nuttalli* recorded in a caretaker of NHP in a zoo (31) but still it might be concern.

CONCLUSION

In conclusion, there was a high prevalence of *Entamoeba* spp in long-tailed macaque in Baluran National Park, and *E. coli* were identified (53%). The long-tailed macaque might have carried another *Entamoeba* species that had also been detected in humans, thus in next study identification with primer *Entamoeba* specific species will help to determine deeply. That should be attempted to analyze potential mix infection.

ACKNOWLEDGEMENT

The present scientific research was supported by Baluran National Park and Faculty of Veterinary Medicine, Universitas Airlangga, Surabaya, Indonesia.

REFERENCES

1. Feng M, Yang B, Yang L, Fu Y, Zhuang Y, Liang L, Xu Q, Cheng X, Tachibana H. High prevalence of *Entamoeba* infections in captive long-tailed macaques in China. *Parasitology Research*. 2011; 109:1093–1097.
2. Tachibana H, Cheng X, Kobayashi S, Matsubayashi N, Gotoh S, Matsubayashi K. High Prevalence of Infection with *Entamoeba dispar* but not *Entamoeba histolytica*, in captive macaque. *Parasitology Research*. 2001;87: 14-17.
3. Levecke B, Dorny P, Geurden T, Vercammen F, Vercruyssen J: Gastrointestinal protozoa in non-human primates of four zoological gardens in Belgium. *Vet Parasitol* 2007, 148:236-246.
4. Rivera WL, Yason JA, Adao DE. *Entamoeba histolytica* and *E. dispar* infections in captive macaques (*Macaca fascicularis*) in the Philippines. *Primates*. 2010; 51:69–74.
5. Tachibana H, Yanagi T, Lama C, Pandey K, Feng M, Kobayashi S, Sherchand JB. Prevalence of *Entamoeba nuttalli* infection in wild rhesus macaques in Nepal and characterization of the parasite isolates. *Parasitology International*. 2013; 62:230–235.
6. Cleaveland S, Laurenson MK, Taylor LH. Diseases of humans and their domestic mammals: Pathogen characteristics, host range and the risk of emergence. *Philosophical Transaction of the Royal Society London B Biology Science*. 2001; 356:991–999.
7. McCallum H, Dobson A. Disease, habitat fragmentation and conservation. *Proceeding*

- Biology Science. 2002; 269:2041–2049.
8. Rivera WL, Kanbara H. Detection of *Entamoeba dispar* DNA in macaque feces by polymerase chain reaction. *Parasitology Research*. 1999; 85:493–495.
 9. Verweij JJ, Vermeer J, Brienen EA, Blotkamp C, Laeijendecker D, Van Lieshout L, Polderman AM. *Entamoeba histolytica* infections in captive primates. *Parasitology Research*. 2003; 90:100–103.
 10. Sličko TR, Smith HV, Rose JB. Emerging parasite zoonoses associated with water and food. *International Journal of Parasitology*. 2000; 30:1379–1393.
 11. Anorital and Lelly Andayasari. Epidemiological Study Of Intestinal Infection Caused By Amoeba In Indonesia. *Media Litbang Kesehatan*. 2011; 21 (1).
 12. Levecke B, Dreesen L, Dorny P, Verweij JJ, Vercammen F, Casaert S, Vercruyse J, Geldhof P. Molecular identification of *Entamoeba* spp. in captive nonhuman primates. *Journal of Clinical Microbiology*. 2010; 48:2988–2990.
 13. Matz-Rensing K, Floto A, Kaup FJ, Schaller K: Gastric amebiasis due to *Entamoeba histolytica* infection in a mandrill (*Mandrillus sphinx*). Book of Abstracts of the 5th Scientific Meeting of the European Association of Zoo and Wildlife Veterinarians, Ebeltoft, Denmark. 2004; 19-23.
 14. Tachibana H, Yanagi T, Pandey K, Cheng XJ, Kobayashi S, Sherchand JB, Kanbara H: An *Entamoeba* sp. strain isolated from rhesus monkey is virulent but genetically different from *Entamoeba histolytica*. *Molecular and Biochemical Parasitology*. 2007; 153:107-114.
 15. Stensvold CR, Lebbad M, Victory EL, Verweij JJ, Tannich E, Alfellani M, Legarraga P, Clark CG. Increased sampling reveals novel lineages of *Entamoeba*: Consequences of genetic diversity and host specificity for taxonomy and molecular detection. *Protista*. 2011; 162:525–541.
 16. Hansen MF, Hariyawan AW, Supriyanto S, Damanik AR. The interactions between long-tailed macaques (*Macaca fascicularis*) and tourists in Baluran National Park, Indonesia. *Journal of Indonesian Natural History*. 2015; 3: 36-41.
 17. Matsubayashi M, Takami K, Kimata I, Teruo N, Tani H, Sasai K, Baba E. Survey of *Cryptosporidium* spp. and *Giardia* spp. Infection In Various Animals At Zoo in Japan. *Journal of Zoo and Wildlife Medicine*. 2005; 36(2): 331-335.
 18. Verweij JJ, Laeijendecker D, Brienen EA, Van Lieshout L, Polderman AM. Detection and identification of *Entamoeba* species in stool samples by a reverse line hybridization assay. *Journal of Clinical Microbiology*. 2003; 41:5041–5045.
 19. Chang AM, Chen CC, Huffman MA. *Entamoeba* Spp. In Wild Formosan Rock Macaques (*Macaca cyclops*) In An Area With Frequent Human-macaque Contact. *Journal of Wildlife Diseases*. 2019; 55(3): 608–618.
 20. Tuda J, Feng M, Imad D, Kobayashi S, Cheng X, Tachibana H. Identification of *Entamoeba polecki* with Unique 18S rRNA Gene Sequences from Celebes Crested Macaques and Pigs in Tangkoko Nature Reserve, North Sulawesi, Indonesia. *Journal of Eukaryotic Microbiology*. 2016; 1–6
 21. Debenham JJ, Tysnes K, Khunger S, Robertson LJ. Occurrence of *Giardia*, *Cryptosporidium*, and *Entamoeba* in wild rhesus macaques (*Macaca mulatta*) living in urban and semi-rural North-West India. *International Journal for Parasitology: Parasites and Wildlife*, 2017; 6:29–34
 22. Feng M, Yang B, Yang L, Fu Y, Zhuang Y, Liang L, Xu Q, Cheng X, Tachibana H. High prevalence of *Entamoeba* infections in captive long-tailed macaques in China. *Parasitology Research*. 2011; 109:1093–1097.
 23. Zanzani SA, Gazzonis AL, Epis S, Manfredi MT. Study of the Gastrointestinal Parasitic Fauna of Captive non-human primates (*Macaca fascicularis*). *Parasitology Research*. 2016; 115:307–312.
 24. Nunn CL, Altizer SM. Infectious diseases in primates: behavior, ecology and evolution. Oxford University Press, Oxford. 2006.
 25. Eckert K, Hahn N, Genz A, Kitchen D, Stuart M, Averbeck G, Stromberg B, Markowitz H. Coprological Surveys of *Alouatta pigra* at Two Sites in Belize. *International Journal of Primatology*, 2006; 27: 227-238
 26. Adhikari P, Dhakal P. Prevalence of Gastrointestinal Parasite of Rhesus Macaque (*Macaca mulatta*, 1780) and Hanuman langur (*Semnopithecus entellus* Dufresne, 1797) In Devghat, Chitwan, Nepal. *Journal of Institute of Science and Technology*. 2018.
 27. Karanis P, Kourenti C, Smith H. Waterborne transmission of protozoan parasites: A worldwide review of outbreaks and lessons learnt. *Journal of Water and Health*. 2007; 5: 1–38.
 28. Jiang Y, Yuan Z, Zang G, Li D, Wang Y, Zhang Y, Liu H, Cao J, Shen Y. *Cyclospora cayentanesis* Infections among diarrheal outpatients in Shanghai : A Retrospective Case Study. *Parasitology Research*. 2018; 103: 915–917.
 29. Sargeant PG, Patrick S, O’Keefe D. Human infections of *Entamoeba chattoni* masquerade as *Entamoeba histolytica*. *Transactions of The Royal Society Tropical Medicine and Hygiene*. 1992; 86(6):633–634
 30. Verweij JJ, Polderman AM, Clark CG. Genetic variation among human isolates of uninucleated cyst-producing *Entamoeba* species. *Journal of Clinical Microbiology*. 2001. 39(4):1644–1646.
 31. Levecke B, Dorny P, Vercammen F, Visser LG, van Esbroeck M, Vercruyse J, Verweij JJ. Transmission of *Entamoeba nuttalli* and *Trichuris trichiura* from nonhuman primates to humans. *Emerging Infectious Disease*. 2015; 21(10):1871–1872.