

23. The Epidemiological Pattern and Risk Factor of ESBL (Extended Spectrum B-Lactamase) Producing

by Agusta Reny Soekoyo

Submission date: 03-Jun-2021 03:36PM (UTC+0800)

Submission ID: 1599522698

File name: d_Risk_Factor_of_ESBL_Extended_Spectrum_-Lactamase_Producing.pdf (1.84M)

Word count: 4973

Character count: 27258

Indonesian Journal of Tropical and Infectious Disease

Vol. 8 No. 3 September–December 2020

Research Report

The Epidemiological Pattern and Risk Factor of ESBL (Extended Spectrum B-Lactamase) Producing *Enterobacteriaceae* in Gut Bacterial Flora of Dairy Cows and People Surrounding in Rural Area, Indonesia

Agusta Reny Soekoyo¹, Sulistiawati², Wahyu Setyorini³, K. Kuntaman^{3,4,5}

¹ Master Program of Basic Medical Sciences, Faculty of Medicine, Universitas Airlangga

² Department of Public Health, Faculty of Medicine, Universitas Airlangga

³ Institute of Tropical Disease, Universitas Airlangga

⁴ Department of Medical Microbiology, Faculty of Medicine, Universitas Airlangga

⁵ Dr Soetomo Academic Hospital, Surabaya, Indonesia

Received: 23rd January 2020; Revised: 28th January 2020; Accepted: 6th October 2020

ABSTRACT

Livestock would be a risk factor of resistant bacteria that impact on human health. Rural area with farms as major economic source has become a risk of the spread of the ESBL producing *Enterobacteriaceae*. The aim of the study was to explore the distribution and risk factor of ESBL (extended-spectrum β -lactamase) producing *Enterobacteriaceae* in the gut bacterial flora of dairy cows and people surrounding farming area. Total of 204 fecal swab samples were collected, 102 from dairy cows and 102 from farmers. Samples were sub-cultured by streaking on MacConkey agar supplemented with 2 mg/L cefotaxime. The growing colonies were confirmed of the ESBL producer by Modified Double Disk Test (M-DDST) and identification of *Enterobacteriaceae* by biochemical test. ESBL genes were identified by PCR. ESBL producing bacteria were found 13.7% in dairy cows and 34.3% in farmers. ESBL producing *Enterobacteriaceae* in dairy cows were 6.9% and in farmers of 33.3%. Statistical analysis showed: Distribution of ESBL producing *Enterobacteriaceae* strain were insignificant among dairy cows and farmers while bla_{TEM} distribution was significantly different ($p=0,035$) and use of antibiotic was identified as a risk factor of colonization of ESBL producing *Enterobacteriaceae* in farmers ($p=0,007$). Farmers had suspected as the source of ESBL producing *Enterobacteriaceae* based on higher prevalence. Further education of appropriate use of antibiotic need to enhance to control risk factor and prevent the colonization of ESBL producing *Enterobacteriaceae*.

Keywords: *Enterobacteriaceae*, ESBL, gut flora, dairy cow, farmer, rural

ABSTRAK

Hewan ternak diduga sebagai faktor risiko kejadian bakteri resisten yang berdampak terhadap kesehatan manusia. Area rural dengan potensi ekonomi di sektor peternakan merupakan area yang berisiko terhadap penyebaran *Enterobacteriaceae* penghasil ESBL. Penelitian bertujuan mengeksplorasi pola distribusi dan faktor risiko *Enterobacteriaceae* penghasil ESBL pada bakteri flora usus sapi perah dan penduduk sekitarnya. Total 204 sampel swab feses, terdiri dari 102 swab feses sapi perah dan 102 swab feses peternak. Swab feses ditanam pada media MacConkey yang ditambahkan 2 mg/L cefotaxime. Koloni yang tumbuh dikonfirmasi sebagai penghasil ESBL dengan metode Modified Double Disk Test (M-DDST) and diidentifikasi dengan uji biokimia. Identifikasi gen ESBL menggunakan metode PCR. Prevalensi bakteri penghasil ESBL di sapi perah sebesar 13.7% dan di peternak sebesar 34.3%. Distribusi *Enterobacteriaceae* penghasil ESBL pada sapi perah 6.9% dan pada peternak 33.3%. Analisis statistik menunjukkan: Tidak ada perbedaan signifikan antara distribusi bakteri *Enterobacteriaceae* penghasil ESBL pada sapi perah dan peternak, distribusi bla_{TEM} pada sapi perah dan peternak berbeda signifikan ($p=0,035$), dan penggunaan antibiotik sebagai faktor risiko kolonisasi *Enterobacteriaceae* penghasil ESBL pada peternak ($p=0,007$). Peternak diduga sebagai sumber *Enterobacteriaceae* penghasil ESBL. Penyuluhan

* Corresponding Author:
kuntaman@fk.unair.ac.id

tentang penggunaan antibiotik secara tepat perlu ditingkatkan untuk mengendalikan faktor risiko dan mencegah kolonisasi *Enterobacteriaceae* penghasil ESBL.

Kata kunci: *Enterobacteriaceae*, ESBL, flora usus, sapi perah, peternak, rural

How to Cite: The Epidemiological Pattern and Risk Factor of ESBL (Extended Spectrum B-Lactamase) Producing *Enterobacteriaceae* in Gut Bacterial Flora of Dairy Cows and People Surrounding in Rural Area, Indonesia. Soekoyo, AR, Sulistiawati, Setyorini, W, Kuntaman, K. Indonesian Journal of Tropical and Infectious Disease, 8(3), 144–151.

INTRODUCTION

The inappropriate use of antibiotics in human and animal health is a major cause of pathogenic bacterial resistance.¹ Resistant pathogenic bacteria that have increased significantly over the past few decades are ESBL-producing bacteria (extended-spectrum β -lactamase).² ESBL mainly distributed among gram-negative bacilli of the *Enterobacteriaceae* group.³

The use of antibiotics as growth promotion and the prevention of disease in veterinary⁴ was correlated with the increase of ESBL producing Gram-negative bacteria.⁵ It thus, the livestock are identified as a risk factor for ESBL producing *Enterobacteriaceae* (ESBL-E).⁶ In 2018, East Java Province was identified has the highest population of dairy cows in Indonesia, about 283,311 cows.⁷ Most of the dairy farms in East Java Province are located in rural areas to empowering the community's economy. Kalipucang Village in District of Pasuruan, East Java was established as the first center of public dairy farming in Indonesia at 2016.⁸

ESBL producing *Enterobacteriaceae* (ESBL-E) bacteria cause various infections in humans, such as: bacteremia, gastroenteritis, respiratory infections, urinary tract infections, and infections of the central nervous system.⁹ In dairy cows, *Escherichia coli* and *Klebsiella spp* are identified as an agent that causing inflammation of mammary gland and udder tissue (mastitis) which impact on decreasing quantity and quality of milk production, increasing the rejected prematurely, and death.¹⁰ ESBL-E becomes a serious challenge in therapy for infection includes prolong of diagnosis and expensive, a longer duration of treatment, limited antibiotic choices that impact

on higher cost of therapy for an infection, as well as increased morbidity and mortality.¹¹ Multiple resistance to fluoroquinolones, aminoglycosides, and trimethoprim are commonly found in ESBL-E.³ It also causes carrier in both humans¹² and livestock.⁶

Since ESBL-E has been identified as one of the causes of mastitis in dairy cows in 2000,⁶ dairy farming was suspected to be at risk as a source of ESBL-E transmission. It thus the epidemiological profile of ESBL-E in farm needs to be explored. This study is the first study to analyze the epidemiological patterns of ESBL producing *Enterobacteriaceae* in livestock and humans in rural areas in Indonesia.

The aim of the study was to identify and analyzed the distribution and risk factor of ESBL producing *Enterobacteriaceae* in gut bacterial flora of dairy cows and people/farmer who have close contact with dairy cows.

MATERIALS AND METHODS

Design

This study was conducted a cross-sectional design. This study was approved by Research Ethics Committee in Faculty of Medicine of Universitas Airlangga, no: 82/EC/KEPK/FKUA/2019.

Samples Collection

Fecal samples were collected from April until July 2019 from dairy cows and farmers. Samples collected using Amies transport medium (Deltalab, Spanyol). The total dairy farming in the District of Pasuruan, East Java, are 648 clusters, of which as many as 102 were randomly included as the samples in this study, consisting

of 102 samples from dairy cows and 102 from humans that living around and have close contact with dairy cows. These clusters were located in Kalipucang village. The samples transportation were using a cool box and ice pack (4-8°C). Samples were processed within 24 hours after taken from the sample source.

Bacterial and ESBL Identification

The isolation, confirmation, and identification of ESBL-E were conducted in The Clinical Microbiology Laboratory of Dr. Soetomo Hospital, Surabaya. Amies swab was streaked on MacConkey selective medium supplemented by cefotaxime 2 mg/L and incubated for 18-24 h at 37°C. The growing colonies were ESBL confirmed by Modified Double Disk Synergy Test (M-DDST). Colonies which grow were inoculated in Mueller Hinton medium (0,5 MacFarland) with five (5) antibiotics disk : amoxicillin/clavulanic (AMC) 30 ug, ceftazidime (CAZ) 30 ug, cefotaxime (CTX) 30 ug, ceftriaxone (CRO) 30 ug, and aztreonam (ATM) 30 ug which placed within 15 mm of distance from edge to edge of AMC disk.¹³ Incubated for 18-24 hours at 37°C. The inhibition zone which show synergy zone between one of cephalosporin disk or aztreonam disk with amoxicillin/clavulanic disk was confirmed as ESBL producer. ESBL positive strain were bacteriologically identified using the biochemical test: Triple Sugar Iron (TSI) test, Indol test, Methyl Red (MR) test, Voges Proskauer (VP) test, Urease test, and Motility test. All bacterial isolates were then stored in deep freeze minus 80°C.

Genotypic Examination

Genotypic examination was held in Institute of Tropical Diseases, Universitas Airlangga, Surabaya.

DNA Extraction

DNA extraction was conducted by boiling method. The identified ESBL producing bacteria were re-cultured on Mueller Hinton medium, incubated at 37°C for 18 – 24 h. Four to five colonies were taken and suspended in sterile distilled water in 1,5 ml Eppendorf tube. The suspension was homogenized with vortex for 15 seconds and immersed in a thermostat at 95°C for 10 minutes, then centrifuged at 14.000 rpm for 1 minutes. The supernatant was used as DNA template in PCR and stored in -20°C.¹⁴

DNA Amplification

Three ESBL gene primers are used to amplify and identify the ESBL gene, as follow (Table 1) : [15]

PCR reaction was run in volume of 20 µl: 10 ul of GoTaq Green Master Mix 2x (Promega), 1 ul for each of forward and reverse primers, 3 µl nuclease free water, and 5 µl DNA template. PCR was run as follow: for *bla*_{CTX-M}: denaturation on 94°C for 7 minutes and the following 35 cycles on 94°C for 50 seconds, annealing on 50°C for 40 seconds, extension on 72°C for 1 minute, and final extension on 72°C for 5 minutes; for *bla*_{SHV}: denaturation on 96°C for 5 minutes and the following 35 cycles on 96°C for 1 minute, annealing on 60°C for 1 minute, extension on 72°C for 1 minute, and final extension on 72°C

Table 1. Primers of ESBL Genes

Gen	Sekuens Primer (5'-3')	Amplicon size (bp/base pair)
<i>bla</i> _{CTX-M}	F : 5' ATGTGCAGYACCAGTAARGT 3' R : 5' TGGGTRAARTARCTSAACCAGA 3'	593
<i>bla</i> _{SHV}	F : 5' GGTTATGCGTTATATTCGCC 3' R : 5' TTAGGTTGCCAGTGCTC 3'	867
<i>bla</i> _{TEM}	F : 5' ATGAGTATCAACATTTCCG 3' R : 5' CTGACAGTTACCAATGCTTA 3'	867

for 10 minutes; and for *bla*_{TEM}: denaturation on 96°C for 5 minutes and the following 35 cycles on 96°C for 1 minute, annealing on 58°C for 1 minute, extension on 72°C for 1 minute, and final extension on 72°C for 10 minutes. PCR amplicon were visualized in 2% gel electrophoresis.

Questionnaire to Find Risk Factors

Information about risk factor of ESBL producing *Enterobacteriaceae* in dairy cows and farmers were obtained through interview and questionnaires. *Enterobacteriaceae* strain and genotype distribution among dairy cows and farmers and risk factors were analyzed by Chi Square/Fisher Exact Test on SPSS 22 version program.

RESULTS

34 Distribution of ESBL Producing Enterobacteriaceae in Dairy Cows and Farmers

Prevalence of ESBL producing bacteria in dairy cows was 13.7% (14/102) and in farmers 34.3% (35/102). ESBL producing *Enterobacteriaceae* in dairy cows were 6.9% (7/102) and in farmers 33.3% (34/102) (Table 2). The ESBL producing *Enterobacteriaceae* in dairy cows were mostly: *Escherichia coli* 85.7% (6/7) and *Enterobacter spp* 14.3% (1/7), whereas among 34 ESBL-E in human were *Escherichia*

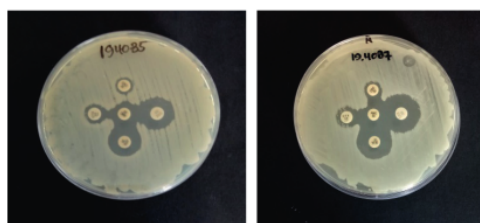


Figure 1. The Double Disk Synergy Test (DDST) for identifying ESBL producer bacteria. Note: The increasing of inhibition zone in area between cephalosporin disk and clavulanic acid disk was marked as positive ESBL producer.

coli 82.4% (28/34), *Enterobacter spp* 14.3% (3/34), *Klebsiella pneumoniae* 5.9% (2/34), and *Klebsiella oxytoca* 2.9% (1/34). There were no significant differences in distribution of ESBL producing *Enterobacteriaceae* strain in dairy cows and in farmers (Table 2) and Fig. 1.

Escherichia coli were identified as dominant strain of ESBL producing *Enterobacteriaceae* in dairy cows and farmers (85.7% vs. 82.4%).

Distribution of ESBL Gene Among Dairy Cows and Human (Farmers)

Among seven ESBL producing *Enterobacteriaceae* in dairy cows, six isolates were harbored *bla*_{CTX-M} (85.7%) and one an unidentified gene (14.3%). Among 34 isolates of ESBL producer in farmers, 26 isolates harbored *bla*_{CTX-M} (76.5%), 15 isolates *bla*_{TEM}, and three

31 Table 2. Distribution of ESBL producing *Enterobacteriaceae* strain in dairy cows and farmers

ESBL Producer	Dairy Cows (n=102)	Farmers (n=102)	p value
ESBL producing bacteria	14 (13.7%)	35 (34.3%)	
Non- <i>Enterobacteriaceae</i>	7 (6.9%)	1 (0.9%)	
<i>Enterobacteriaceae</i>	7 (6.9%)	34 (33.3%)	
<i>Escherichia coli</i>	6 (85.7)	28 (82.4)	p = 1,000
<i>Enterobacter spp</i>	1 (14.3)	3 (8.8)	p = 0,542
<i>Klebsiella pneumoniae</i>	0 / 0	2 (5.9)	p = 1,000
<i>Klebsiella oxytoca</i>	0 / 0	1 (2.9)	p = 1,000

Note: ESBL-E: ESBL producing *Enterobacteriaceae*

Table 3. ESBL genes distribution of ESBL producing *Enterobacteriaceae* in dairy cows and farmers

ESBL Gene	Dairy Cows (n=7)	Farmers (n=34)	p value
<i>bla</i> _{CTX-M}	6 (85.7)	26 (76.5)	p = 1,000
<i>bla</i> _{SHV}	0 (0)	3 (8.8)	p = 1,000
<i>bla</i> _{TEM}	0 (0)	15 (44.1)	p = 0,035
Unidentified gene	1(14.3)	0 (0)	p = 0,171
<i>bla</i> _{CTX-M} , <i>bla</i> _{TEM}	0 (0)	8 (23.5)	-
<i>bla</i> _{CTX-M} , <i>bla</i> _{SHV} , <i>bla</i> _{TEM}	0 (0)	1 (2.9)	-

Note: Unidentified gene: gene of ESBL producing *Enterobacteriaceae* which couldn't detected with specific primer used in this study

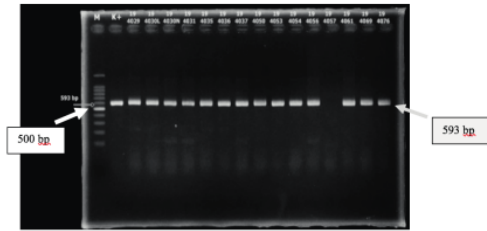


Figure 2. Electrophoresis of amplified gene of *bla*_{CTX-M} (593 bp)

isolates *bla*_{SHV} (8.8%), respectively. There was a significant difference of *bla*_{TEM} distribution in dairy cows and in farmers ($p = 0,035$) (Table 3).

Combination of two and three of ESBL genes were found in *Enterobacteriaceae* producing ESBL isolates in farmers. Eight isolates harbored *bla*_{CTX-M} dan *bla*_{TEM} (23.5%) and one isolate harbored *bla*_{CTX-M}, *bla*_{SHV}, *bla*_{TEM} (2.9%) (Table 3).

Risk Factor for Colonization of ESBL Producing *Enterobacteriaceae*

Age, origin of dairy cows, history of illness during the last 3 months, history of drug use, type of drug given last 3 month, and type of feed were not risk factors for colonization of ESBL-producing *Enterobacteriaceae* in dairy cows. Risk factor for ESBL producing *Enterobacteriaceae* colonization in farmers was the use of antibiotics ($p = 0.007$). Gender, age, education level, household, hygiene sanitation of environment (location of dairy cow shed and type of toilet), personal hygiene sanitation (frequency and how to wash hands), and frequency of going out of the city during the last 3 months were not a risk factor.

DISCUSSION

Colonization of ESBL producing *Enterobacteriaceae* in dairy cows by 6,9% in this study is similar with study in healthy ruminant (cows and buffaloes) in rural areas in Cambodia by 7%¹⁶ and lower than in cattle farm in German

by 54.5%.⁶ Colonization of ESBL producing *Enterobacteriaceae* in farmers by 33,33% lower than the colonization of ESBL-producing bacteria in healthy individuals in rural areas in Thailand by 65.7%,¹⁷ in China by 73.9%,¹⁸ and workers in cattle farms in Germany: 12.5%.⁶

Human and animal gut were the natural habitat of many bacterial especially *Enterobacteriaceae* and become a reservoir of various infections.¹² Non-appropriate and overuse of antibiotic caused selective pressure that supports the growth of resistance bacteria.⁹ Colonization of resistance bacteria in human and animal gut causing transmission of resistance genes in gut flora bacterial through horizontal gene transfer by conjugative plasmid.¹² ESBL mostly encoded by genes in plasmids.¹⁹ *Enterobacteriaceae* was identified as having plasmid carrying resistant genes. IncFII plasmid group known as a plasmid group that encoded ESBL genes and it widely distributed in *Enterobacteriaceae*. It called epidemic resistant plasmid group.²⁰

This study identified *Escherichia coli* as the dominant ESBL producing bacteria in dairy cows (85.7%) and farmers (82.4%). Distribution of *Escherichia coli* as an ESBL producer in dairy cows in this study was 85.7%, higher than in cattle farms in Mecklenburg-Western Pomerania, Germany by 54.5%.⁶ At farmers, distribution of ESBL producing *Escherichia coli* by 82.4% is lower than the distribution of *Escherichia coli* in healthy individuals in rural areas in Thailand by 85.4%¹⁷ and in China 88%,¹⁸ but higher than workers in cattle farms in Germany: 12.5%.⁶

Escherichia coli is the main organism that produces ESBL in communities²¹ and associated with urinary tract infections (UTI). It is related to their role as gut bacterial flora and are pathogenic to humans and animals.¹² The resistance of commensal *Escherichia coli* to antimicrobial agents has been found in healthy individuals.²² This bacterium also acts as an indicator of 'acquired antibiotic resistance genes' in the community.²³

Distribution of *bla*_{CTX-M} in the ESBL producing *Enterobacteriaceae* in dairy cows by 85.7% is higher than the distribution of *bla*_{CTX-M} in cattle farms in Germany 80%.⁶ At farmers,

distribution of *bla*_{CTX-M} in the ESBL-producing *Enterobacteriaceae* by 76.5% higher than in healthy individuals in rural areas in China by 68.1%¹⁸ and in Thailand by 65.7%.¹⁷ *bla*_{CTX-M} that mostly integrated with conjugative plasmid, and conjoint with the other resistant gene, has a higher transferability among bacteria, and impact on higher prevalence epidemiologically.²⁴

*bla*_{CTX-M}, *bla*_{SHV}, and *bla*_{TEM} are dominant ESBL genes in various regions worldwide and found from isolates of humans, animals and the environment. *bla*_{TEM} and *bla*_{SHV} mainly found in *Escherichia coli* and *Klebsiella pneumoniae*.²⁵ The study identified *bla*_{TEM} in *Escherichia coli* and *Enterobacter spp* isolates and *bla*_{SHV} in *Klebsiella pneumoniae* and *Escherichia coli* isolates. *bla*_{CTX-M} is the dominant ESBL gene worldwide, especially in community and has increased in incidence since 2000.¹² It were identified in livestock and pets with *Escherichia coli* as the main producing bacteria.²⁶ Our study showed that *bla*_{CTX-M} was identified in *Escherichia coli*, *Enterobacter spp*, and *Klebsiella oxytoca*.

Dissemination of *bla*_{CTX-M} occurs rapidly, extensive, and significantly. Plasmids are known to carry genes which encode resistance for antibiotic.²⁷ Conjugative plasmids play an important role in facilitating the horizontal dissemination of *bla*_{CTX-M} among bacteria.²⁸ *bla*_{CTX-M} was identified in various epidemic resistant plasmid groups, including: groups IncF, IncN, Inc11, IncL/M, and IncHI2.²⁴ These plasmid group are able to capture and transfer resistant genes among bacteria.²⁹ The IncFII Group is the largest plasmid group encoding *bla*_{CTX-M} and widely found in *Enterobacteriaceae*²⁴ and isolates from human and animal.²⁰

ISEcp1 is the genetic element which associated with all variants of *bla*_{CTX-M}, play a role incoding transposase and inducing *bla*_{CTX-M} expression. Transposase is an enzyme that mobilizes *bla*_{CTX-M} in certain plasmids.²⁸ Other types of IS include: *ISCR1* plays a role in *bla*_{CTX-M} group 2 and 9 expression, *IS10* in *bla*_{CTX-M} group 8 expression,²⁴ and *IS26* in *bla*_{CTX-M} group 1 and 9 expression. *ISEcp1* and *ISCR1* play a role in the mobilization

of class 1 integron that encodes various types of resistant genes (MDR cassettes).²⁸

Clones of *Escherichia coli* were identified having a significant role in the dissemination of *bla*_{CTX-M}, among others, such as ST131, ST38, ST393, ST405. ST131 serotype O25: H4 phylogenetic group B2 is an extra-intestinal pathogenic *E. coli* strain and was mainly involved in *bla*_{CTX-M} dissemination especially *bla*_{CTX-M-15} in worldwide.²⁴ It identified having IncFII plasmid group and found in isolates originated from the animal, environment, and especially human.²⁸

Combination of two or three ESBL genes in one bacterial isolate is due to integron and plasmid that carry several resistant genes. *Enterobacteriaceae* would be harboring of 5 to 6 plasmids in one isolate.³⁰ Class 1 integron which related to *bla*_{CTX-M} were identified encoding several types of resistant genes (MDR cassettes).²⁸ The unidentified gene is thought to be an ESBL gene in addition to *bla*_{CTX-M} (group 1), *bla*_{SHV}, and *bla*_{TEM}.

The finding of antibiotic use as risk factor of ESBL producing *Enterobacteriaceae* in farmers in this study ($p = 0,007$) related according to the study of Luvsansharav et al,¹⁷ which identified the use of antibiotics in the last 3 months (OR 1,883; 95% CI 1,221-2,903) as a risk factor for colonization of ESBL producing bacteria in healthy individuals in rural area in Thailand and Zang et al¹⁸ that identified antibiotic use in the previous 6 months (OR 1,892; 95% CI 1,242-2,903; $p = 0.034$) as a risk factor for colonization of ESBL-producing bacteria in healthy individuals in rural area in China.

In dairy cows in this study, there was not any antibiotic use detected based on data on questionnaires. The total of 52% of dairy cows were given anthelmintic every three months. Risk factors for colonization of ESBL producing *Enterobacteriaceae* in dairy cows was not identified. Dissemination of ESBL producing bacteria occurs from animals to humans or vice versa.⁶ ESBL producing Gram negative in dairy cows have the potential as a zoonotic risk,³¹ especially through close contact during daily care.⁶

²¹ The results of the study showed that the rural community could act as a reservoir of ESBL-producing *Enterobacteriaceae*. The finding of *Escherichia coli* and *bla*_{CTX-M} as the dominant strain and ESBL gene epidemiologically indicated alarming sign. *E. coli* ST131 consider as virulent strain,²⁴ multiple resistance, easily colonize and spread between humans, animals and environment isolates.²⁷ It contributes to the spread of *bla*_{CTX-M} globally through horizontal gene transfer.²⁴ ESBL-producing *E. coli* and *bla*_{CTX-M} have driven the spread of ESBL gene in the community. Colonization of ESBL-producing *Enterobacteriaceae* is a risk factor for infection of ESBL-E.³ The colonization of ESBL-producing *Enterobacteriaceae* in community were predicted increasing by about 5% annually.²⁴ This certainly becomes a challenge in therapy of infectious disease.

CONCLUSION

Farmers had suspected as the source of ESBL producing *Enterobacteriaceae* based on higher prevalence. The use of antibiotic in human, was identified as risk factor for colonization of ESBL producing *Enterobacteriaceae* while not identified in dairy cows.

²⁵ CONFLICT OF INTEREST

There is no conflict of interest of this study.

ACKNOWLEDGEMENT

We thank staff and cadre of Sumberpitu Public Health Centre for assistance of collecting samples, Health Office of District of Pasuruan for the study support. Microbiology Laboratory of Dr. Soetomo and Institute Tropical Diseases, Surabaya for processing samples. Thank you to Tahir professorship grant Universitas Airlangga No. 1149/UN3/2018, that supported this study.

REFERENCES

1. Health Ministry of The Republic of Indonesia. Antimicrobial Resistance Control Becomes World Attention. News Release. 2018. [cited 30 January 2019]. Available from: <<http://www.depkes.go.id/article/view/18112900002/pengendalian-resistensi-antimikroba-jadi-perhatian-dunia.html>>.
2. Shaikh S, Fatima J, Shakil S, Rizvi SMD, Kamal MA. Antibiotic Resistance And Extended Spectrum β -Lactamase : Types, Epidemiology And Treatment, Saudi J Bio Sci. 2015 ;22(1);90-101. doi: <http://dx.doi.org/10.1016/j.sjbs.2014.08.002>
3. Brolund A. Overview of ESBL-producing *Enterobacteriaceae* From A Nordic Perspective. Review, Infect Ecol Epidemiol, 2014;4: 1-9. doi:<https://doi.org/10.3402/iee.v4.24555>
4. Madigan MT, Martinko JM, Bender KS, Buckley DH, Stahl DA. *Brock Biology of Microorganism*, 14th edn, Pearson Education Inc.S; 2015: 820-821.
5. Dandachi I, Chabou S, Daoud Z, and Rolain JM. Prevalence and Emergence Of Extended-Spectrum Cephalosporin, Carbapenem and Colistin-Resistant Gram Negative Bacteria Of Animal Origin In The Mediterranean Basin. Front Microbiol. Review. 2018;9(2299):1 – 26. doi: <https://doi.org/10.3389/fmicb.2018.00550>
6. Dahms C, Hubner NO, Kossow A, Mellmann A, Dittmann K, Kramer A. Occurance of ESBL-Producing *Escherichia coli* in Livestock and Farm Workers in Mecklenburg-Western Pomerania, Germany, Plos One. 2015; 10(11): 1-13 <https://doi.org/10.1371/journal.pone.0143326>
7. Central Bureau of Statistics of Republic Indonesia. Dairy Cows Population by Province, 2009-2018. Animal husbandry. Dynamic Table. [cited 29 December 2019]. Available from: (<https://www.bps.go.id/linkTableDinamis/view/id/1018>).
8. Government of District of Pasuruan. Official Website of Pasuruan Regency Government : Pasuruan Regency has The First County of Dairy Farm Centre In Indonesia, [cited 4 Nopember 2019]. Available from: <<https://www.pasuruankab.go.id/>>.
9. Carroll KC, Morse SA, Mretzner T, Miller S. *Jawetz, Melnick & Adelberg's Medical Microbiology*, 27th edn, Mcgraw Hill Education: Lange Medical Books; 2016, pp.351-360.
10. Nurhayati, IS dan Martindah, E. Pengendalian Mastitis Subklinis Melalui Pemberian Antibiotik Saat Periode Kering Pada Sapi Perah. Wartazoa. 2015; 25(2): 065 – 074. doi:<http://dx.doi.org/10.14334/wartazoa.v25i2.1143>
11. Amelia A, Nugroho A, and Harijanto PN. Diagnosis and Management of Infections Caused by *Enterobacteriaceae* Producing Extended-Spectrum β -Lactamase. Acta Med Indones-Indones J Intern Med. 2016; 48(2):156-166.

12. Woerther PL, Burdet C, Chachaty E, and Andremont A. Trends in Human Faecal Carriage of Extended-Spectrum β -Lactamases in The Community : Toward The Globalization of CTX-M. *Clin Microbiol Rev.* 2013; 26(4): 744-758. doi: <http://dx.doi.org/10.1128/CMR.00023-13>
13. Schreckenberger P and Rekasius V, 2007. Procedure Double Disk Diffusion Confirmation of ESBL. Layola University Medical Center. pp 1 – 7.
14. Tawfik MM, El-Moghazy AN, Hassan MA. PCR-Based Molecular Detection of ESBLs Encoding Genes *bla_{TEM}*, *bla_{CTX-M}*, and *bla_{SHV}* Among MDR *Escherichia coli* Isolates From Diarrhoea Stool Cultures In Cairo, Egypt. *International Journal of Research Studies In Microbiology and Biotechnology (IJRSMB)*. 2016; 2(3): 7-14. doi : <http://dx.doi.org/10.20431/2454-9428.0203002>
15. Ferreira CM, William AF, Almeida NCOdS, Naveca FG, Barbosa MdGV. Extended Spectrum Beta Lactamase Producing Bacteri Isolated From Hematologic Patients In Manaus, State of Amazonas, Brazil. *Braz J Microbiol.* 2011 Jul-Sep; 42(3): 1076-1084. doi: 10.1590/S1517-838220110003000028.
16. Atterby C, Osbjør K, Tepper V, Rajala E, Hernandez J, Seng S, Holl D, Bonnedahl J, Borjesson S, Magnusson U, and Jarhult JD. Carriage Of Carbapenemase- And Extended-Spectrum Cephalosporinase-Producing *Escherichia Coli* And *Klebsiella pneumoniae* In Humans And Livestock In Rural Cambodia; Gender And Age Differences And Detection Of *Bla_{oxa-48}* In Humans. *Zoonoses Public Health*. 2019 Sep; 66(6):603–617. doi: 10.1111/zph.12612
17. Luvsansharav UO, Hirai I, Nakata A, Imura K, Yamauci K, Niki M, Komalamisra C, Kusulsuk T, and Yamamoto Y. Prevalence of and Risk Factors Associated With Faecal Carriage of CTX-M β -Lactamase-producing *Enterobacteriaceae* In Rural Thai Communities, *Journal Antimicrobial Chemotherapy* 2012 Jul; 67(7): 1769 – 1774. doi : <https://doi.org/10.1093/jac/dks118>
18. Zhang H, Zhou Y, Guo S, and Chan W. High prevalence and risk factors of faecal carriage of CTX-M type extended-spectrum beta-lactamase-producing *Enterobacteriaceae* from healthy. *Front Microbiol.* 2015 March; 6(239): 1 – 5. doi: <https://doi.org/10.3389/fmicb.2015.00239>
19. Paterson DL and Bonomo RA. Extended Spectrum β -Lactamases : a Clinical Update. *Clin Microbiol Rev.* 2005 Oct; 18(4): 657–686. Doi: 10.1128/CMR.18.4.657-686.2005.
20. Rozwandowicz M, brouwer MSM, Fisher J, Wagenaar JA, Gonzalez-Zorn B, Guerra B, Mevius DJ, and Hordijk J. Plasmids carrying antimicrobial resistance genes in *Enterobacteriaceae*. *Journal of Antimicrobial Chemotherapy.* 2018 May; 73(5): 1121–1137. doi: <https://doi.org/10.1093/jac/dkx488>
21. De A. Extended Spectrum Beta-Lactamase Infections, In : Parthasarathy A, Kundu R, Agrawal R, Choudhury J, Shastri DD, Yewale VN, Shah AK, Uttam KG, *Textbook of Pediatric Infectious Diseases*, IAP, National Publication House, Jaypee Brothers Medical Publishers (P) LTD, New Delhi; 2013.
22. Rolain JM. Food and human gut as reservoirs of transferable antibiotic resistance encoding genes. *Front Microbiol. Review.* 2013 June; 4(173): 1 – 10. doi: <https://doi.org/10.3389/fmicb.2013.00173>
23. Araque M, and Labrador I. Prevalence of Faecal Carriage of CTX-M-15 Beta-Lactamase-Producing *Escherichia coli* in Healthy Children From A Rural Andean Village In Venezuela. *Osong Public Health Res Perspect.* 2018; 9(1):9 –15. doi: <https://doi.org/10.24171/j.phrp.2018.9.1.03>
24. Canton R, Gonzalez-Alba JM, and Galan JC. CTX-M Enzymes: Origin and Diffusion. *Front Microbiol. Review.* 2012 April; 3(110): 1-19. doi: <https://doi.org/10.3389/fmicb.2012.00110>
25. Doi Y, Lovleva A, and Bonomo RA. The Ecology of Extended-Spectrum- β -Lactamase (ESBLs) In The Developed World. *Journal of Travel Medicine.* Review. 2017 ; 24(Suppl. 1) : S44-S51. doi: 10.1093/jtm/taw102.
26. Rossolini GM, D'Andrea MD, and Mugnaioli C. The spread of CTX-M-type extended-spectrum β -lactamases. *Journal Compilation 2008 European Society of Clinical Microbiology and Infectious Diseases, CMI. Review.* 2008; 14 (Suppl. 1): 33–41. doi: <https://doi.org/10.1111/j.1469-0691.2007.01867.x>
27. Dubey RC. A Textbook of Biotechnology with Biotechnology Practicals for Class XII. Revised edition. S. Chand & Company PVT. LTD. Ram Nagar. New Delhi; 2014.
28. Bevan ER, Jones AM, and Hawkey PM. Global Epidemiology Of CTX-M β -Lactamases: Temporal And Geographical Shifts In Genotype. *Journal of Antimicrobial Chemotherapy, Editor's Choice.* 2017 August; 72(8): 2145–2155. doi: <https://doi.org/10.1093/jac/dkx146>
29. Carattoli A. Plasmids In Gram Negatives : Molecular Typing of Resistance Plasmids. *International Journal of Medical Microbiology. Mini Review. Abstract.* Elsevier. 2011 December; 301(8): 654-658. doi: <https://doi.org/10.1016/j.ijmm.2011.09.003>
30. Livermore DM. Bacterial Resistance: Origins, Epidemiology, And Impact. *Clinical Infectious Diseases.* 2003 Jan; 36(Issue Supplement_1): S11–S23. doi: <https://doi.org/10.1086/344654>
31. Olsen RH, Bisgaard M, Lohren U, Robineau B, and Christensen H. Extended – Spectrum Beta-Lactamase-Producing *Escherichia coli* Isolated From Poultry : A Review of Current Problems, Illustrated With Some Laboratory Findings. *Avian Pathology.* 2014 Apr; 43(3): 199–208. doi: <https://doi.org/10.1080/03079457.2014.907866>

23. The Epidemiological Pattern and Risk Factor of ESBL (Extended Spectrum B-Lactamase) Producing

ORIGINALITY REPORT

14%

SIMILARITY INDEX

11%

INTERNET SOURCES

13%

PUBLICATIONS

1%

STUDENT PAPERS

PRIMARY SOURCES

1	portal.research.lu.se Internet Source	1%
2	www.ijo.in Internet Source	1%
3	Hiroaki Shigemura, Eri Sakatsume, Tsuyoshi Sekizuka, Hiroshi Yokoyama et al. " Food workers as a reservoir of extended-spectrum cephalosporin-resistant in Japan ", Applied and Environmental Microbiology, 2020 Publication	<1%
4	www.arcjournals.org Internet Source	<1%
5	www.reactgroup.org Internet Source	<1%
6	Magdalena Nüesch-Inderbinen, Andrea Treier, Katrin Zurfluh, Roger Stephan. "Raw meat-based diets for companion animals: a potential source of transmission of pathogenic and antimicrobial-resistant	<1%

Enterobacteriaceae", Royal Society Open Science, 2019

Publication

7	ir.library.osaka-u.ac.jp Internet Source	<1 %
8	thejns-net.org Internet Source	<1 %
9	www.kjim.org Internet Source	<1 %
10	agritrop.cirad.fr Internet Source	<1 %
11	dev.biologists.org Internet Source	<1 %
12	kcdcphrp.org Internet Source	<1 %
13	parasitesandvectors.biomedcentral.com Internet Source	<1 %
14	tropmedhealth.biomedcentral.com Internet Source	<1 %
15	"Asia Pacific Stroke Conference 2018. Abstracts of the Annual Conference of the Asia Pacific Stroke Organization (APSO). Jakarta, Indonesia, September 6-9, 2018", Cerebrovascular Diseases, 2018 Publication	<1 %

16

diglib.uibk.ac.at

Internet Source

<1 %

17

www.ncbi.nlm.nih.gov

Internet Source

<1 %

18

juniperpublishers.com

Internet Source

<1 %

19

openagriculturejournal.com

Internet Source

<1 %

20

Edwin Barrios-Villa, Gerardo Cortés-Cortés, Patricia Lozano Zarain, Sergio Romero-Romero et al. " Characterization of extended-spectrum and CMY-2 -lactamases, and associated virulence genes in from food of animal origin in México ", British Food Journal, 2018

Publication

<1 %

21

Fatemeh Doregirae, Masoud Alebouyeh, Bahar Nayeri Fasaee, Saeed Charkhkar, Elahe Tajeddin, Mohammad Reza Zali. " Changes in antimicrobial resistance patterns and dominance of extended spectrum β -lactamase genes among faecal isolates from broilers and workers during two rearing periods ", Italian Journal of Animal Science, 2017

Publication

<1 %

22

Iman Dandachi, Elie S. Sokhn, Elias A. Dahdouh, Eid Azar, Bassel El-Bazzal, Jean-Marc Rolain, Ziad Daoud. "Prevalence and Characterization of Multi-Drug-Resistant Gram-Negative Bacilli Isolated From Lebanese Poultry: A Nationwide Study", *Frontiers in Microbiology*, 2018

Publication

<1 %

23

Laksmi Wulandari, Berliana Hamidah, Cennikon Pakpahan, Nevy Shinta Damayanti et al. "Initial study on TMPRSS2 p.Val160Met genetic variant in COVID-19 patients", *Human Genomics*, 2021

Publication

<1 %

24

Pinyo Rattanaumpawan, Chatiros Choorat, Kanchanaporn Takonkitsakul, Teerawit Tangkoskul et al. "A prospective surveillance study for multidrug-resistant bacteria colonization in hospitalized patients at a Thai University Hospital", *Antimicrobial Resistance & Infection Control*, 2018

Publication

<1 %

25

actamedindones.org

Internet Source

<1 %

26

Braun, Sascha D., Marwa F. E. Ahmed, Hosny El-Adawy, Helmut Hotzel, Ines Engelmann, Daniel Wei, Stefan Monecke, and Ralf Ehricht. "Surveillance of Extended-Spectrum

<1 %

Beta-Lactamase-Producing Escherichia coli in Dairy Cattle Farms in the Nile Delta, Egypt", *Frontiers in Microbiology*, 2016.

Publication

27

Suporn Pholwat, Tawat Pongpan, Rattapha Chinli, Elizabeth T. Rogawski McQuade et al. "Antimicrobial Resistance in Swine Fecal Specimens Across Different Farm Management Systems", *Frontiers in Microbiology*, 2020

Publication

28

repub.eur.nl
Internet Source

<1 %

29

Habeeb Kayode Saka, Silvia García-Soto, Nasir Tukur Dabo, Vicente Lopez-Chavarrias et al. "Molecular detection of extended spectrum β -lactamase genes in Escherichia coli clinical isolates from diarrhoeic children in Kano, Nigeria", *PLOS ONE*, 2020

Publication

30

"Antimicrobial Resistance in the 21st Century", Springer Nature America, Inc, 2018

Publication

31

Bayeh Abera, Mulugeta Kibret, Wondemagegn Mulu. "Extended-Spectrum beta (β)-Lactamases and Antibiogram in Enterobacteriaceae from Clinical and Drinking

<1 %

Water Sources from Bahir Dar City, Ethiopia",
PLOS ONE, 2016

Publication

32

Carmen Dahms, Nils-Olaf Hübner, Annelene Kossow, Alexander Mellmann, Kathleen Dittmann, Axel Kramer. "Occurrence of ESBL-Producing Escherichia coli in Livestock and Farm Workers in Mecklenburg-Western Pomerania, Germany", PLOS ONE, 2015

Publication

<1 %

33

Ebrahimi, Fatemeh, Julianna Mózes, Júlia Monostori, Orsolya Gorácz, Adina Fésűs, László Majoros, Krisztina Szarka, and Gábor Kardos. "Comparison of the faecal colonization rates with extended-spectrum beta-lactamase producing enterobacteria among patients in different wards, outpatients and screened medical students : ESBL carriage in different ward types", Microbiology and Immunology, 2016.

Publication

<1 %

34

Firdaus Hamid, Munawir Munawir, Aldian Irma Amaruddin, Bramantyas Kusuma Hapsari, Andi Rofian Sultan, Dianawaty Amiruddin. "Prevalence of Fecal Carriage of Extended-Spectrum β -Lactamase-Producing Enterobacteriaceae Among School Children in

<1 %

South Sulawesi, Indonesia", Archives of
Clinical Infectious Diseases, 2020

Publication

35

Mozhdeh Barzan, Darioush Gharibi, Masoud Ghorbanpoor, Mohammadrahim Haji Hajikolaei, Mehdi Pourmehdi-Boroujeni. "Phylogenetic Grouping and Phenotypic Detection of Extended-Spectrum β -Lactamases Among Escherichia coli From Calves and Dairy Cows in Khuzestan, Iran", International Journal of Enteric Pathogens, 2017

Publication

36

Shuheii Ueda, Bui Thi Kim Ngan, Bui Thi Mai Huong, Itaru Hirai, Le Danh Tuyen, Yoshimasa Yamamoto. " Limited Transmission of β -Type-Positive Escherichia coli between Humans and Poultry in Vietnam ", Antimicrobial Agents and Chemotherapy, 2015

Publication

37

Wan-Chen Lee, Kuang-Sheng Yeh. "Characteristics of extended-spectrum β -lactamase-producing Escherichia coli isolated from fecal samples of piglets with diarrhea in central and southern Taiwan in 2015", BMC Veterinary Research, 2017

Publication

38

dipot.ulb.ac.be

Internet Source

<1 %

<1 %

<1 %

<1 %

39

jurnal.ugm.ac.id

Internet Source

<1 %

40

pubmed.ncbi.nlm.nih.gov

Internet Source

<1 %

41

www.mdpi.com

Internet Source

<1 %

42

www.scilit.net

Internet Source

<1 %

43

www.scribd.com

Internet Source

<1 %

44

Onduru Gervas Onduru, Susan Fred Rumisha, Rajhab Sawasawa Mkakosya, Gabriel Kambale Bunduki, Said Aboud. "Lack of Association Between Patients Characteristics and the Carriage of Extended-spectrum β -Lactamase Producing Enterobacteriaceae in Community Settings in Blantyre, Malawi", Research Square, 2021

Publication

<1 %

45

Åse Östholm-Balkhed. "Extended-Spectrum β -Lactamase-Producing Enterobacteriaceae : Antibiotic consumption, Detection and Resistance Epidemiology", Linköping University Electronic Press, 2014

<1 %

46

R. J. Mesa. "Extended-spectrum β -lactamase-producing Enterobacteriaceae in different environments (humans, food, animal farms and sewage)", *Journal of Antimicrobial Chemotherapy*, 05/02/2006

<1 %

Publication

Exclude quotes On

Exclude matches Off

Exclude bibliography On

23. The Epidemiological Pattern and Risk Factor of ESBL (Extended Spectrum B-Lactamase) Producing

GRADEMARK REPORT

FINAL GRADE

/100

GENERAL COMMENTS

Instructor

PAGE 1

PAGE 2

PAGE 3

PAGE 4

PAGE 5

PAGE 6

PAGE 7

PAGE 8
