

- [Online First](#)
- [Current Issue](#)
- [Archive](#)
- [Most Downloaded](#)
- [Most Accessed](#)
- [Most Cited](#)



## Rawal Medical Journal

Current Issue : 2020, Vol: 45, Issue: 2

ISSN : 0303-5212

ISSUES : 4 per year

PUBLISHER : Pakistan Medical Association Rawalpindi Islamabad Branch

Rawal Medical Journal is an internationally peer reviewed journal and an official publication of Pakistan Medical Association (PMA) Rawalpindi-Islamabad Branch. It is funded by PMA and HEC Pakistan and 1000 printed copies are distributed to members of PMA and all major hospitals and teaching institutions of Pakistan. It is published every three months in March, June, September and December.



AU\*

REV

A

Indexed in  
IME  
Pakmed  
Scopi

Appro  
Educati  
Pakist  
Medical :

[« Previous Issue](#)

**RMJ. Year: 2020, Volume: 45**

### Editorial

#### 1. COVID Pandemic: Lessons for Pakistan

Ejaz Khan

**RMJ. 2020; 45(2): 250-252**

» [Abstract](#) » [PDF](#)

### Original Research

#### 2. Systemic lupus erythematosus clinical spectrum at King Abdul Aziz Specialists Hospital, Taif, Saudi Arabia

Ajmal Farid, Hammad Tufail Chaudhary, Imran Nazir, Irshad Ahmad Sirwal, Anjum Zahin

**RMJ. 2020; 45(2): 253-256**

» [Abstract](#) » [PDF](#)

#### 3. Hypertensive patients are prone to have large infarcts when present with acute coronary syndrome

Zahid Mahmood, Noeman Ahmed, Anjum Iqbal, Abdul Rashid, Naveed Arshad

**RMJ. 2020; 45(2): 257-260**

» [Abstract](#) » [PDF](#)

#### 4. Effect of Inspiratory and Expiratory Muscle Training to reduce Hypertension among Stage I and II Hypertensive Patients

Tahir Ramzan, Muhammad Iqbal Tariq, Maria Razzaq, Madeeha Shafiq, Zara Khalid, Imran Amjad, Sumaiyah Obaid

**RMJ. 2020; 45(2): 261-264**

» [Abstract](#) » [PDF](#)

#### 5. Diabetic dyslipidemia and association of glycemic status with lipid profile, body mass index and abdominal obesity

Kuldeep Poorani, Nisar Ahmed Khokhar, Pardeep Kumar, Pushpa Goswami

**RMJ. 2020; 45(2): 265-268**

» [Abstract](#) » [PDF](#)

#### 6. Correlation between self reported adherence to haemodialysis and serum phosphate levels in patients with end stage renal disease

Abdul Rehman Arshad, Salahuddin, Abdul Wahab Mir, Taleah Tahir

**RMJ. 2020; 45(2): 269-272**

» [Abstract](#) » [PDF](#)

#### 7. Assessment of various types of poisoning cases seen in District Hospital, Badin, Sindh, Pakistan

Fayaz Hussain Khoso, Fouzia Panhwar, Mudassar Iqbal Arain, Abdullah Dayo, Muhammad Ali Ghoto

**RMJ. 2020; 45(2): 272-277**

» [Abstract](#) » [PDF](#)

#### 8. Knowledge, Attitude and Practices of dentists regarding modes of transmission of Hepatitis B virus in our society

Hira Shafique, Sana Zafar, Danish Javed

**RMJ. 2020; 45(2): 278-281**

» [Abstract](#) » [PDF](#)

- [Online First](#)
- [Current Issue](#)
- [Archive](#)
- [Most Downloaded](#)
- [Most Accessed](#)
- [Most Cited](#)



## RAWAL MEDICAL JOURNAL

### Editorial Staff

#### Patron:

Prof. M. Salim          Professor of Anesthesiology Islamic International Medical College Rawalpindi

#### Editors:

Prof. Nasir Khokhar    Professor of Medicine Shifa International Hospital Islamabad

Prof Mazhar Malik     Professor of Psychiatry Rawal Institute of Medical Sciences Islamabad

#### Associate Editors:

Dr Omar Qureshi      Assistant Professor of Medicine Pakistan Kidney and Liver Transplant Institute, Lahore

Dr. Mati ur Rehman.    Professor of Medicine Riphah University Islamabad

Dr. Ejaz Khan.          Professor of Pediatrics. Shifa College of Medicine Islamabad

Dr Muhammad Usman Ghani Assistant Professor of Psychiatry, Rai Medical College Sargodha

#### Managing Secretary:

Dr. Muhammad Khurram Professor of Medicine Rawalpindi Medical College Rawalpindi

#### Finance Secretary:

Dr Zakauallah Warriach Assistant Professor of Medicine Rawalpindi Medical College Rawalpindi

#### Epidemiologist:

Dr. Sajida Naseem Associate Professor of Community Medicine Shifa College of Medicine Islamabad

#### Bibliographer:

Muhammad Javed. Chief Librarian Shifa Tameer e Millat University Islamabad

### National Editorial Board

Prof. Musaddiq Khan

Professor of Surgery

Rawalpindi Medical College

Prof. Shawkat Matabdin

Professor of Anesthesiology

Shifa International Hospital

AU

REV

A

Indexed in  
IME  
Pakmed  
Scopi

Appro  
Educati  
Pakist  
Medical :

Rawalpindi

Islamabad

Prof. Mian Abdul Rashid

Prof. M. Yousuf Chaudhary

Professor of Forensic Medicine

Professor of Radiology

Muhammad Medical College

Shifa International Hospital

Mirpur AJK

Islamabad

Prof. Javed Butt

Prof. Rehana Arshad

Professor of Gastroenterology

Professor of Anatomy

Pakistan Institute of Medical Sciences

Rawalpindi Medical College

Islamabad

Rawalpindi

Dr Naveed Ashfaq

Consultant Surgeon

CDA Hospital

Dr Hina Mehwish

Dr Khalid Randhawa

Asstt Prof of Gynecology

Asstt Prof of Surgery

Rawalpindi Medical College

Rawalpindi Medical College

Rawalpindi

Rawalpindi

Dr. Sajjad Minhas

Dr Arshad Rana

General Practice

President PMA Rawalpindi Islamabad Branch

Rawalpindi

Rawalpindi

### International Editorial Board

Prof. Helmut Denk

Prof. Graham Foster

Professor of Pathology

Professor of Medicine

University of Vienna

University of London

Austria

London

Prof. C. L. Lie

Prof. James Lewis

Professor of Medicine  
University of Hong Kong  
Hong Kong

Professor of Medicine  
Georgetown University  
Washington DC

Prof. Myron Schwartz  
Professor of Surgery  
Mount Sain School of Medicine  
New York, NY

Prof. Graeme P. Young  
Professor of Medicine  
Flinders University  
South Australia, Australia

Prof. Rene Lambert  
International Agency for  
Research on Cancer  
Lyon, France

Prof. Zhang Gao Wang  
Professor of Cardiovascular Surgery  
Xuan Wu Hospital Capital University  
of Medical Sciences  
Beijing, China

Dr Med. Peter Schiedermaier

Dr Dr. Abdurrahman Hamdi inan

Gynecology and Obstetrics  
Turkey

Professor of Medicine and Endocrinology  
University of Bonn  
Germany

#### ABOUT JOURNAL

- [About Publisher](#)
- [Contact Us](#)
- [Editorial & Peer Review Process](#)

#### POLICIES

- [Privacy Policy](#)
- [Editorial Policy](#)
- [Author's Rights and Obligations](#)
- [Conflict of Interest Policy](#)

#### STATEMENTS

- [Terms of Use](#)
- [Author's Rights and Obligations](#)
- [Publication Ethics and Publication Malpr](#)
- [Protection of Research Participants](#)

- [Plagiarism Policy](#)
- [Advertising Policy](#)

- [\(Statement On Human And Animal Right\)](#)
- [License Information](#)



This is an open access journal which means that all content is freely available without charge to the user or his/her institution allowed to read, download, copy, distribute, print, search, or link to the full texts of the articles in this journal without asking permission from the publisher or the author. This is in accordance with the Budapest Open Access Initiative (BOAI) definition of open access.

The articles in Rawal Medical Journal are open access articles licensed under the terms of the Creative Commons Attribution-NonCommercial License (<http://creativecommons.org/licenses/by-nc-sa/3.0/>) which permits unrestricted, non-commercial use and reproduction in any medium, provided the work is properly cited.

• [Online First](#) • [Current Issue](#) • [Archive](#) • [Most Downloaded](#) • [Most Accessed](#) • [Most Cited](#)

[« Previous Issue](#)

[Next Issue »](#)

**RMJ. Year: 2020, Volume: 45, Issue: 1**

### **Editorial**

**1. Care of transgenders**

Mazhar Malik  
**RMJ. 2020; 45(1): 1-2**  
[» Abstract](#)   [» PDF](#)

### **Original Research**

**2. Emotional intelligence and self-concept as predictors of goal-adjustment among Pakistani transgenders**

Uzma Ilyas, Rida Hussain Bukhari, Arooj Fatima  
**RMJ. 2020; 45(1): 3-6**  
[» Abstract](#)   [» PDF](#)

**3. Coping mechanisms curtailed to stress by the By-birth hermaphrodites**

Razia Anjum, Tazvin Ijaz, Muhammad Usman Ghani  
**RMJ. 2020; 45(1): 7-12**  
[» Abstract](#)   [» PDF](#)

**4. Adequacy of dialysis in patients of chronic kidney disease**

Haidar Zaman, Bilal Saeed, Muhammad Wasim Sajjad, Armaghan Ali, Munir Ahmad Abbasi, Muhammad Asim  
**RMJ. 2020; 45(1): 13-16**  
[» Abstract](#)   [» PDF](#)

**5. Antibiotic susceptibility pattern in an intensive care unit of a tertiary care hospital in Pakistan**

Mir Tahir Hussain Talpur, Kashif Ullah Shabir, Khalil Ullah Shabir, Muhammad Tauqeer Katbar, Uzair Yaqoob, Shahida Kashif  
**RMJ. 2020; 45(1): 17-21**  
[» Abstract](#)   [» PDF](#)

**6. Urinary tract pathogens and their patterns of resistance to commonly used antibiotics**

Salman Farooq Dar, Malik Muhammad Atif, Muhammad Hamza Arshad, Muhammad Fahr Hayat, Talha Farooq Dar  
**RMJ. 2020; 45(1): 22-26**  
[» Abstract](#)   [» PDF](#)

**7. Association between diabetic neuropathy, fall risks and balance in diabetes type 2 patients**

Mayda Asif, Sana Batool  
**RMJ. 2020; 45(1): 27-30**  
[» Abstract](#)   [» PDF](#)

**8. Changes in blood glucose 2 hours after meals in Type 2 diabetes patients based on length of treatment at Hasanuddin University Hospital, Indonesia**

Anna Islamiyati, Fatmawati Fatmawati, Nur Chamidah  
**RMJ. 2020; 45(1): 31-34**  
[» Abstract](#)   [» PDF](#)

**9. Different cutaneous infections in diabetic patients presenting in an out patient department of a tertiary care hospital**

Sadaf Ahmed Asim, Mehnaz Nuruddin Gitay, Sahar Soomro  
**RMJ. 2020; 45(1): 35-38**  
[» Abstract](#)   [» PDF](#)

**10. Frequency of hypomagnesemia in adult patients with diabetic ketoacidosis**

Sadia Salman, Usman Iqbal Rana, Nauman Zafar, Fariha Salman,  
**RMJ. 2020; 45(1): 39-41**  
[» Abstract](#)   [» PDF](#)

**11. Serum Testosterone levels in Obese and Diabetes mellitus Type-II in Males individuals**

Farheen dahri Shaikh, Muhammad Rafiq, Muhammad Aqeel Bhutto, Syed Habib Naqvi  
**RMJ. 2020; 45(1): 42-45**  
[» Abstract](#)   [» PDF](#)

**12. Relationship of glycemic status with anthropometric measures and body mass index**

Syed Muhammad Hasan, Muhammad Bilal Azmi, Akhtar Ali Baloch, Fauzia Imtiaz  
**RMJ. 2020; 45(1): 46-50**  
[» Abstract](#)   [» PDF](#)

**13. Frequency of Cellac Disease in anemic patients presenting at Federal Government Poly Clinic Hospital, Islamabad, Pakistan**

Safina Hameed Qureshi, Sania Hameed Qureshi, Farid Ullah Shah, Syed Fahd Shah, Aisha Hameed Qureshi

eJM

AU

REV

A

Indexed in  
 IME  
 Pakist  
 Scop

Appro  
 Educati  
 Pakist  
 Medical :

## Changes in blood glucose 2 hours after meals in Type 2 diabetes patients based on length of treatment at Hasanuddin University Hospital, Indonesia

Anna Islamiyati, Fatmawati, Nur Chamidah

Departments of Mathematics, Faculty of Natural Sciences, Hasanuddin University and Faculty of Sciences and Technology, Airlangga University, Indonesia

**Objectives:** To analyze the changing pattern that occurs in glucose two hours after eating from patients with type 2 diabetes. The changing pattern of glucose is shown based on the length of treatment that varies from 3 to 29 days.

**Methodology:** Data were obtained from medical records of Type 2 diabetes patients while undergoing treatment at the Hasanuddin University Hospital, Indonesia during 2015-2016. The total number of samples was 418 out of 50 patients. The glucose of type 2 diabetes patients is a longitudinal data which modeled through the penalized quadratic spline regression.

**Results:** There were four patterns of glucose

based on length of treatment in which the pattern indicates that the glucose tends to decrease at the beginning of treatment until the second week of treatment. The glucose increases for the third to the fourth week, so that it needs attention from doctors and patients.

**Conclusion:** The pattern of glucose change two hours after meals based on treatment duration for a month of treatment tends to change in every week. This shows the need for analysis of the pattern of glucose change at each time interval of a particular treatment. (Rawal Med J 202;45:31-34).

**Keyword:** Glucose, length of treatment, Type 2 diabetes, Quadratic penalized spline.

### INTRODUCTION

One of the glucose measurements recommended by the doctors is the measurement of glucose two hours after eating. This aims to control the precision of nutrients and drugs consumed by the patient. A glucose monitoring program in diabetics has shown that glucose increases after having meals.<sup>1</sup> Two hours glucose after meals is one of the glucose measurements that need a special analysis, because it is related to the nutrients that have been consumed by patients at the time. However, fluctuating and non-trend data is difficult to analyze with parametric approaches. On the other hand, the condition of the increasing and decreasing data is a phenomenon that cannot be accepted. However, it should be able to be explored to provide useful information.

Each glucose pattern provides information relating to both the medical treatment and the patient itself. The recent research on diabetes has examined many factors related to glucose for diabetics. These include body weight,<sup>2</sup> knowledge,<sup>3</sup> unhealthy lifestyles,<sup>4</sup> and genetic factors.<sup>5</sup> For data analysis, researchers have used regression models,<sup>6</sup> chi-

square,<sup>7</sup> logistics,<sup>8</sup> hazard rates,<sup>9</sup> and meta analysis.<sup>10</sup> However, these studies have not yet looked in detail about patterns of glucose change in a given interval. We propose a method of a highly flexible nonparametric regression through a longitudinal study of the penalized spline.<sup>11</sup> Penalized spline can be applied in linear, quadratic, cubic, or in other orders.<sup>12</sup> In this study, we proposed a quadratic penalized spline regression. The excellence of the penalized spline is capable to generate smooth regression curves with more accurate patterns of change at certain intervals.<sup>13</sup> In addition, longitudinal studies will consider the effect of repeated measurements of each patient. The aim of this study was to analyze the changing pattern that occurs in glucose two hours after eating from patients with type 2 diabetes.

### METHODOLOGY

This is a longitudinal study which analyzed blood glucose data two hours after meals from type 2 diabetes patients coming to Hasanuddin University Hospital, Indonesia. It was obtained from the

medical records in 2015-2016. We selected 50 hospitalized patients who had glucose measured every day. So, the total data which were analyzed is around 418. We examined blood glucose two hours after meals as the response variable and length of treatment as the predictor variable. We did not involve nutrition in data modeling.

**Statistical Analysis:** The analysis model used is a quadratic penalized spline regression, which is:

$$y_{ij} = f(t_{ij}) + \varepsilon_{r,ij}, \text{ where } f_i(t_{ij}) = \sum_{u=0}^2 \beta_u(t_{ij})^u + \sum_{v=1}^d \beta_{(2+v)}(t_{ij} - K_v)_+^2, \\ i = 1, 2, \dots, n, \text{ and } j = 1, 2, \dots, m_i.$$

The shape of the estimation criteria of the quadratic penalized spline is as follows:

$$Q = y^T y - 2\beta^T X y + \beta^T X^T X \beta + \lambda^T \beta^T D \beta.$$

Where  $y$  is the response vector,  $\beta$  is the coefficient regression,  $X$  is the  $X$  matrix containing the predictor,  $\lambda$  is the vector of the smoothing parameter, and  $D$  is the diagonal matrix (0.1). The optimal model selection method is based on the minimum Generalized Cross Validation (GCV) value.<sup>14</sup>

## RESULTS

The age of the patients ranged from 40-85 years with the patient's weight ranged from 38-85 kg. For the duration of treatment, there were 3-29 days. Glucose 2 hours after meals ranged from 41-580 mg/dL (Table 1).

**Table 1. Characteristics of patients with type 2 diabetes.**

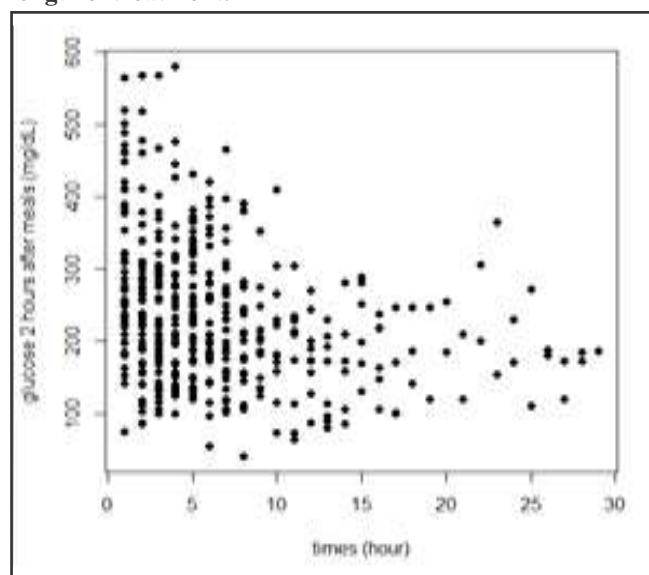
Factor	Minimum	Maximum	Mean±sd
Age	40	85	59.6±10.2
Weight	38	85	59.2±11.8
Length of treatment	3	29	8.36±5.59
Glucose 2 hours after meals	41	580	236.7±97.8

**Table 2. The levels of blood glucose two hours after meals based on length of treatment.**

Length of treatment (day)	2 hours blood glucose after meals (mg/dL)	mean±sd	Percent
1 – 7	55 – 580	269.8±102.4	56%
8 – 14	41 – 410	193.2±76.1	32%
15 – 21	100 – 289	189.4±58.4	8%
22 – 30	110 – 365	200.6±67.9	4%

The number of patients who stayed in the hospital at the most 7 days was about 56% with average glucose 2 hours after meals 269.8 mg/dL. For 8-14 days of treatment there are about 32% with average glucose 2 hours after meals 193.2 mg/dL (Table 2). Furthermore, blood glucose data were analyzed by nonparametric regression. The first step in the analysis process was the initial data plot. It aimed to look at the trend of data distribution in the  $X$  and  $Y$  axes (Fig. 1).

**Fig. 1 Plot of glucose two hours after meals data based on length of treatment.**



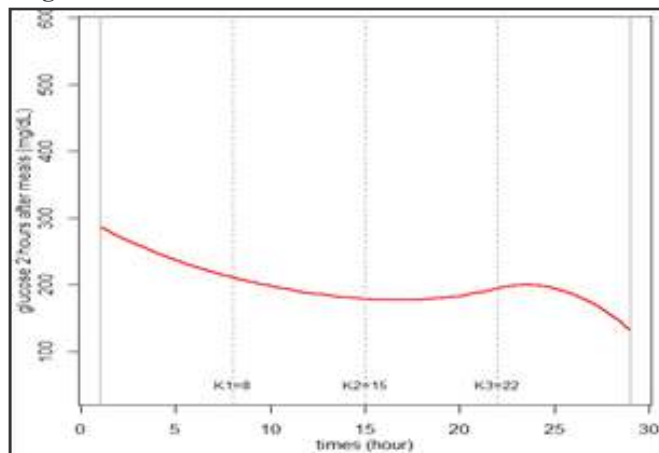
In Figure 1, the interpretation of the pattern of glucose reduction was difficult because of data points that do not form a parametric curve. This pattern looks much more extreme. The data did not establish a pattern spread parametric as we know it in the classic statistical approach.

Penalized spline regression model is the optimal quadratic regression model of a smoothing parameter which provides a minimum GCV value. The minimum value of GCV was 8536.756 at  $l=0.67$ . We obtain a regression model of the penalized spline quadratic on glucose 2 hours after a meal that corresponded to the knot point and the optimal smoothing parameter is:

$$y_{ij} = 286,65 - 56,77t_{ij} - 126,54t_{ij}^2 - 109,58(t_{ij} - 8)_+^2 - 90,47(t_{ij} - 15)_+^2 - 97,82(t_{ij} - 22)_+^2$$



**Fig. 2 Regression curve of the quadratic penalized spline on glucose two hours after meals.**



The pattern of changing glucose 2 hours after meals consisted of 4 patterns of change. The first pattern occurred on the 1<sup>st</sup> day until the 8<sup>th</sup> day. The decrease in glucose continuously occurred until the second pattern after day 8 to day 15. The third pattern occurred after the 15<sup>th</sup> day until the 22<sup>nd</sup> day, in which glucose appeared to increase slowly until the fourth week. The fourth pattern after the 22<sup>nd</sup> day is glucose keep going down until the patient is discharged from the hospital (Fig. 2).

## DISCUSSION

This study is a longitudinal which considered the effect of repetitive time on response. Each patient received inpatient glucose measurements. The patient's age was in the range of 40-85 years. The weight was 38-85 kg with an average weight of about 59.2 kg. This is the age group and body weight susceptible to type 2 diabetes.<sup>15</sup>

Blood glucose data analysis through a model of quadratic spline penalized identified the changing patterns of glucose based on the treatment time. It was able to identify four patterns of glucose changes (Fig. 2). This shows the blood glucose in the first week decreased, so patients choose to be discharged from the hospital. As for patients who are still in the hospital, it is to continue treatment in the second week. They had an average glucose in the second week down to 193.2 mg/dL. This is close to the normal limit of glucose 2 hours after eating (180 mg/dL). The changing pattern of the glucose

showed that the effect of diabetes treatment decreased the level of blood glucose in the first and second weeks of treatment.

Other patients continued treatment in the third week. Their average glucose 2 hours after meal was 189.4 mg/dL and it was getting lower than in the previous week. Glucose 2 hours after meals from type 2 diabetic patients was getting normal. The condition of normal glucose of the patient may affect the patient's lifestyle to disobey the rules of care.

Other possibilities, the patient will be bored with the treatment of diabetes. Next, the average glucose in the fourth week was 200.6 mg/dL. This is quite worrying. This is the biggest challenge of diabetes, which is called the awareness of the patient's own self to live a healthy lifestyle.<sup>16</sup> The team of diabetes doctors should monitor and evaluate the usual course of treatment after 2 weeks of hospitalization.

## CONCLUSION

Based on the pattern of glucose changes from the quadratic penalized regression, it showed that there was a pattern of increased blood sugar 2 hours after eating that occurred on the 15<sup>th</sup> to 22<sup>nd</sup> day of treatment. Therefore, we must examine more closely the patient's condition, medical treatment and the environment together at that time interval.

### Author Contributions:

Conception and design: Anna Islamiyati, Fatmawati  
 Collection and assembly of data: Anna Islamiyati  
 Analysis and interpretation of the data: Anna Islamiyati, Nur Chamidah  
 Drafting of the article: Anna Islamiyati  
 Critical revision of the article for important intellectual content: Fatmawati, Nur Chamidah  
 Statistical expertise: Anna Islamiyati  
 Final approval and guarantor of the article: Anna Islamiyati  
**Corresponding author email:** Anna Islamiyati: annaislamiyati@unhas.ac.id  
**Conflict of Interest:** None declared  
 Rec. Date: Aug 8, 2018 Revision Rec. Date: Nov 22, 2019 Accept Date: Dec 6, 2019

## REFERENCES

1. Veras VS, Teixeira CR, Santos MA, Torquato MT, Rodrigues FF, Zanetti ML. Glycemic profile of persons with diabetes mellitus in a home blood glucose self-monitoring program. *Text Context Nursing Florianópolis* 2014;23:609-16.
2. Nguyen QM, Xu JH, Chen W, Srinivasan SR, Berenson GS. Correlates of Age Onset of Type 2 Diabetes Among

- Relatively Young Black and White Adults in a Community. *Diabetes Care* 2012;35:1341-6.
3. Upadhyay DK, Palaian S, Shankar PR, Mishra P. Knowledge, Attitude and Practice about Diabetes among Diabetes Patients in Western Nepal. *Rawal Med J* 2008; 33: 8-11.
  4. Herman WH, Hoerger TJ, Brandle M, Hicks K, Sorensen S, Zhang P, et al. The Cost-Effectiveness of Lifestyle Modification or Metformin in Preventing Type 2 Diabetes in Adults with Impaired Glucose Tolerance. *Ann Intern Med* 2005;142: 323–32.
  5. Hariri S, Yoon PW, Qureshi N, Valdez R, Scheuner MT, Khoury MJ. Family history of type 2 diabetes: a population-based screening tool for prevention?. *Genet Med* 2006;8:102-8.
  6. Perreault L, Temprosa M, Mather KJ, Horton ED, Kitabchi A, Larkin M, et al. Regression from prediabetes to normal glucose regulation is associated with reduction in cardiovascular risk: results from the diabetes prevention program outcomes study. *Diabetes Care* 2014;37:2622-31.
  7. Islam R, Rahman O. The risk factors of type 2 diabetic patients attending rajshahi diabetes association, Rajshahi, Bangladesh and its primary prevention. *Food Public Health* 2012;2:5-11.
  8. Arun N, Mounghmai R. Comparison of classifiers for the risk of diabetes prediction. *Procedia Computer Sci* 2015;69:132-42.
  9. Askarishahi M, Hajizadeh E, Ardekani MA, Manaviat MR. Estimate of the diabetic retinopathy hazard rates in type 2 diabetic patients with current status data. *Int J Diabetes Developing Countries* 2012;32:203–8.
  10. Li Y, Yan X, Geng H, Gong G. Type 2 diabetes mellitus and *TCF7L2* gene rs12255372 G/T polymorphism: a meta-analysis involving 7990 subjects. *Int J Diabetes Developing Countries* 2018;38:55-61.
  11. Islamiyati A, Fatmawati, Chamidah N. Estimation of covariance matrix on bi-response longitudinal data analysis with penalized spline regression. *J Physics* 2018; Conf. Series 979.
  12. Islamiyati A, Fatmawati, Chamidah N. Ability of covariance matrix in bi-response multi-predictor penalized spline model through longitudinal data simulation. *Int J Acad Appl Res* 2019;3:8-11.
  13. Islamiyati A, Fatmawati, Chamidah N. Penalized spline estimator with multi-smoothing parameters in bi-response multi-predictor nonparametric regression model for longitudinal data. *Songklanakarin J Sci Technol* 2019; Article In Press. SJST-2018-0423.R2.
  14. Islamiyati A, Fatmawati, Chamidah N. Longitudinal data analysis using bi-response nonparametric regression model based on the penalized spline estimator with single penalty. Submitted to *Pak J Statistics Operation Res* 2018.
  15. Yin Y, Han E, Wang Y, Zhang Y, Wu S, Zhang H, et al. Identification of risk actors affecting impaired fasting glucose and diabetes in adult patients from Northeast China. *Int J Environ Res Public Health* 2015;12:12662-78.
  16. Porcellati F, Lucidi P, Bolli GB, Fanelli CG. Thirty years of research on the dawn phenomenon: lessons to optimize blood glucose control in diabetes. *Diabetes Care* 2013;36:3860-2.

also developed by scimago:



SCIMAGO INSTITUTIONS RANKINGS

SJR

Scimago Journal &amp; Country Ran Enter Journal Title, ISSN or Publisher Name

[Home](#)[Journal Rankings](#)[Country Rankings](#)[Viz Tools](#)[Help](#)[About Us](#)

## Press play on remote working

The ultimate remote working tool.

LARK

OPEN

# Rawal Medical Journal

<b>Country</b>	Pakistan - <a href="#">SJR Ranking of Pakistan</a>	<b>7</b>
<b>Subject Area and Category</b>	<a href="#">Medicine</a> <a href="#">Medicine (miscellaneous)</a> <a href="#">Nursing</a> <a href="#">Nursing (miscellaneous)</a>	
<b>Publisher</b>	<a href="#">Pakistan Medical Association</a>	
<b>Publication type</b>	Journals	
<b>ISSN</b>	03035212	
<b>Coverage</b>	2008-ongoing	
<b>Scope</b>	RMJ is a general Medicine publication and accepts ooriginal articles, editorials, case reports and commentaries. It aims to dessiminate medical knowldge to professional community.	
	<a href="#">Homepage</a> <a href="#">How to publish in this journal</a> <a href="#">Contact</a>	
	<a href="#">Join the conversation about this journal</a>	

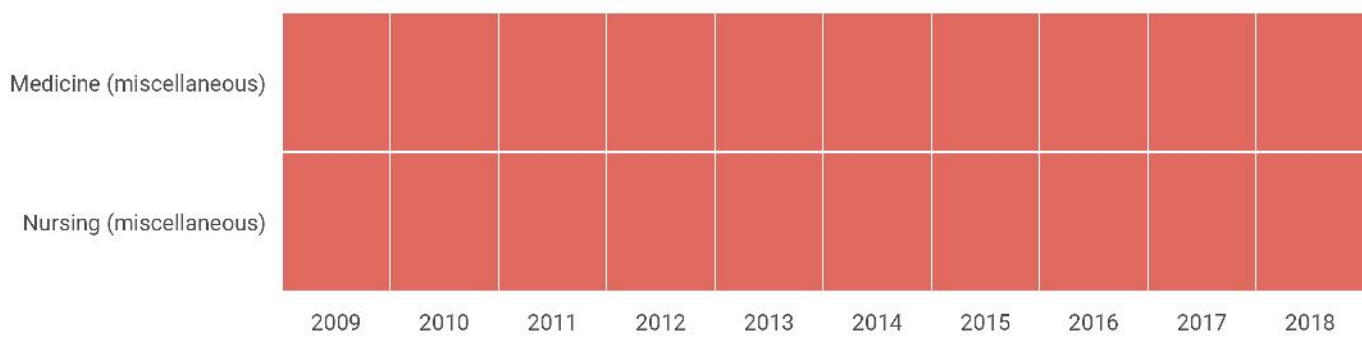
# Call for Research Paper 2019

Top Journal - High Indexing - Impact Factor - Low Cost Publication - Peer Review

ieeesem.com

OPEN

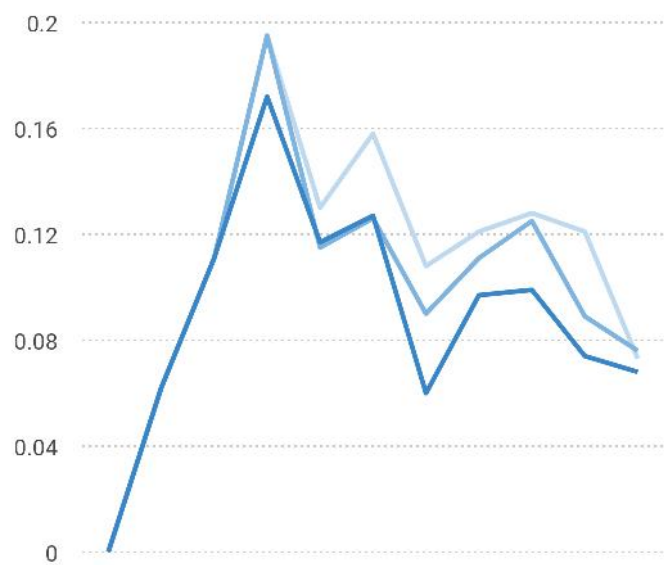
## Quartiles



## SJR



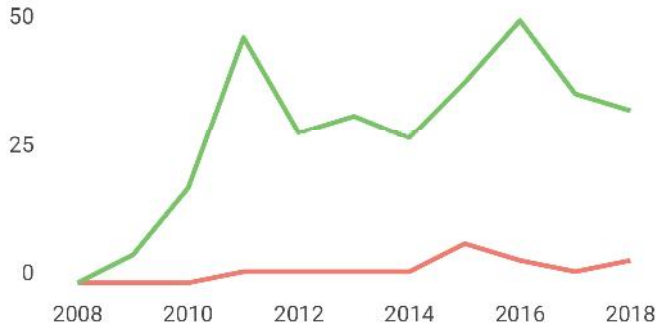
## Citations per document



# Call for Research Paper 2019

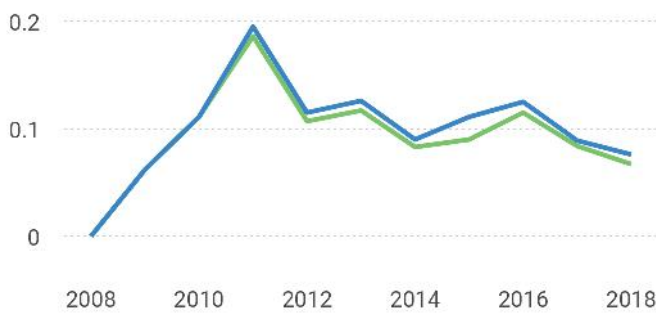
Top Journal - High Indexing - Impact Factor - Low Cost Publication - Peer Review

OPEN



will you give me please advise how much I have to pay

External Cites per Doc   Cites per Doc   +



SCImago Team

sorry to tell you that SCImago Journal & Country Rank is not a journal. SJR is a portal with scientometric indicators of journals indexed in Elsevier/Scopus.

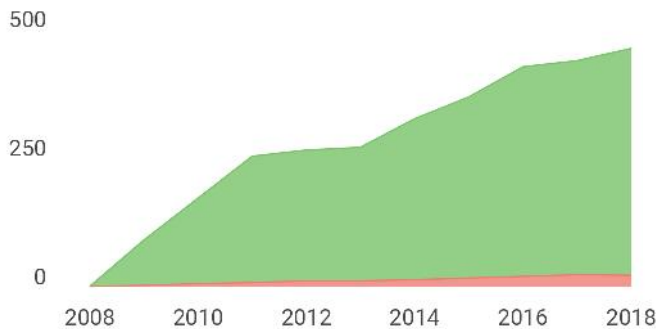
% Intern:



with your request, we suggest you to visit the journal's editorial staff , so they could inform you more deeply.

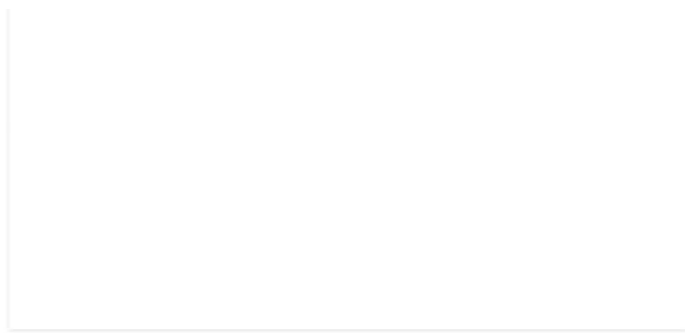
Leave a comment

Citable documents   Non-citable documents   +



Cited documents   Uncited documents   +

500



**Rawal Medical Journal**

Q4

Medicine  
(miscellaneous)

best quartile

**SJR 2018**

0.12



powered by scimagojr.com

← Show this widget in  
your own website

Just copy the code below  
and paste within your html  
code:

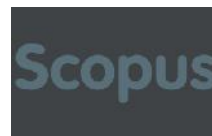
```
<a href="https://www.scim.
```

ssibility to dialogue through comments linked to a specific journal. The purpose is to have a forum in which general doubts about the processes of publication in the journal, experiences and other issues derived from the publication of papers are resolved. For topics on particular articles, maintain the dialogue through the usual channels with your editor.

Developed by:



Powered by:



Follow us on @ScimagoJR

Scimago Lab, Copyright 2007-2020. Data Source: Scopus®

EST MODUS IN REBUS  
Horatio (Satire 1.1, 106)