

Vol. 9 No. 1 April 2022



Jurnal Farmasi dan Ilmu Kefarmasian Indonesia

E-ISSN: 2580-8303

P-ISSN: 2406-9388



PUBLISHED BY:
FACULTY OF PHARMACY UNIVERSITAS AIRLANGGA in collaboration with
INDONESIAN PHARMACISTS ASSOCIATION (IAI) OF EAST JAVA



Accredited SINTA 2
No: B/1796/E5.2/KI.02.00/2020



Home Editorial Team

Editorial Team

	Elida Zairina, S.Si., MPH., PhD., Apt Editor in Chief Universitas Airlangga, Indonesia	56127288100		5986180
	Suciati, S.Si., M.Phil., PhD., Apt Editorial Board Universitas Airlangga, Indonesia	36453244400		5987657
	Dr.rer.nat Maria Lucia Ardhani D. L., S.Si., MPharm, Apt Editorial Board Universitas Airlangga, Indonesia	35573993500		5986185
	Didik Setiawan, Ph.D., Apt Editorial Board Universitas Muhammadiyah Purwokerto, Indonesia	56543713300		5972747
	Dr. Susi Ari Kristina, M.Kes., Apt Editorial Board Universitas Gadjah Mada, Indonesia	56626120200		6001684
	Dr. Ariyanti Suhita Dewi, S.Si., M.Sc Editorial Board Kementerian Kelautan dan Perikanan, Indonesia	36159404300		6670048
	Dr. Adiah Mhd. Ali Editorial Board Universiti Kebangsaan Malaysia, Malaysia	5514172000		-
	Asst. Prof. Dr. Nungruthai Suphrom Editorial Board Naresuan University, Thailand	54388285100		-
	Assist. Prof. Dr.rer.nat. Nuttakorn Baisaeng Editorial Board University of Phayao, Thailand	55630412100		-
	Debra Dorotea, Ph.D Editorial Board Karolinska Institutet, Sweden	57196217112		-
	Deby Fapyane, Ph.D Editorial Board Cellugy ApS, Denmark	55711006200		-
	Susmiandri, S.Kom Administrative Editor Universitas Airlangga, Indonesia	-		-

Login

Username *

Password *

Forgot your password?

Keep me logged in

Accredited Sinta II



Instructions

- [Guide for Reviewers](#)
- [Guide for Authors](#)
- [Online Submission](#)
- [Document Template](#)
- [Copyright Form](#)

Journal Policy

- [Focus and Scope](#)
- [Publication Ethics](#)
- [Article Processing Charge](#)
- [Peer Review Process](#)
- [Peer Review](#)
- [Editorial Team](#)
- [Open Access Statement](#)
- [Archiving](#)
- [Plagiarism](#)
- [Copyright](#)
- [Contact](#)
- [Old Website](#)

Publisher

This journal has been published by the Faculty of Pharmacy, Universitas Airlangga in collaboration with IAI of East Java



Meet Our Editorial Team

- Elida Zairina, S.Si., MPH., PhD., Apt**
Editor in Chief
Universitas Airlangga, Indonesia
- Suciati, S.Si., M.Phil., PhD., Apt**
Editorial Board
Universitas Airlangga, Indonesia
- Susmiandri, S.Kom**
Assistant Editor
Universitas Airlangga, Indonesia

[Read More](#)



Vol. 9 No. 1 (2022): JURNAL FARMASI DAN ILMU KEFARMASIAN INDONESIA

Current Issue



Vol. 9 No. 1 (2022): JURNAL FARMASI DAN ILMU KEFARMASIAN INDONESIA

Published: 2022-04-26

Full Issue



Articles

Cost of Illness Type 2 Diabetes Mellitus Outpatient BPJS on Malang City Health Center

Ika Ratna Hidayati , Aniza Oktaviana , Liza Pristianty

1-7

Abstract : 351

PDF : 142



DOI : 10.20473/jfiki.v9i12022.1-7

Physicochemical Characteristics, Stability, and Irritability of Nanostructured Lipid Carrier System Stabilized with Different Surfactant Ratios

Dyah Rahmasari , Noorma Rosita , Widji Soeratri

8-16

Abstract : 397

PDF : 107



DOI : 10.20473/jfiki.v9i12022.8-16

Synthesis and Activity Test of 1-Allyl-3-(4-tertiary-Butylbenzoyl) Thioureaas a Candidate of an Analgesic Drug

Rais Razak , Siswandono Siswandono , Juni Ekowati

17-23

Abstract : 241

PDF : 59



DOI : 10.20473/jfiki.v9i12022.17-23

Calcium Decay Ability of Extracts Chromolaena odorata L. Leaves (Asteraceae) on Kidney Stones

Dimas Danang Indriatmoko , Maulani Maulani , Tarso Rudiana

24-31

Abstract : 298

PDF : 74



DOI : 10.20473/jfiki.v9i12022.24-31

Synthesis and Antiplatelet Activity of 4-Hidroxy-3-Methoxycinnamic Acid

Erika Christy Marentek , Tutuk Budiati , Juni Ekowati

32-38

Abstract : 241

PDF : 59

Abstract : 175

PDF : 59

PDF

DOI : 10.20473/jfiki.v9i12022.32-38

Acute and Subchronic Toxicity Assessment of 70% Ethanol Extract of Gendarusa Leaves In Vivo

Luthfiatu Kanina , Mabluhatus Solehah , Hani Plumeriastuti

39-47

Abstract : 189

PDF : 62

PDF

DOI : 10.20473/jfiki.v9i12022.39-47

Anti-Hepatitis C Virus Activity of Various Indonesian Plants from Balikpapan Botanical Garden, East Borneo

Rina Puspitasari , Tutik Sri Wahyuni , Achmad Fuad Hafid

48-54

Abstract : 204

PDF : 85

PDF

DOI : 10.20473/jfiki.v9i12022.48-54

Ethnomedicine Study on *Justicia gendarussa* for Male Contraception at the Nimboran Ethnic, Jayapura

Niluh Indrawati , Retno Widyowati , Pilipus Kopeuw

55-61

Abstract : 165

PDF : 60

PDF

DOI : 10.20473/jfiki.v9i12022.55-61

HPLC Method Optimization for Simultaneous Determination of Quercetin, Luteolin, Sinensetin, and Stigmasterol in Herbal Medicines

Asih Imulda Hari Purwani , Riesta Primaharinastiti , Mochammad Yuwono

62-68

Abstract : 184

PDF : 87

PDF

DOI : 10.20473/jfiki.v9i12022.62-68

Potential Drug-Drug Interactions in Ambulatory Patients with Hypertension: a Retrospective Study

Marcha Debby Saraswati , Shafira Muti Ardiana , Budi Suprapti

69-74

Abstract : 162

PDF : 78

PDF

DOI : 10.20473/jfiki.v9i12022.69-74

Molecular Docking of Active Compound of *Lavandula angustifolia* Mill Essential Oil against N-methyl-D-aspartate (NMDA) Receptor

Baiq Risky Wahyu Lisnasari , Aniek Setiya Budiatiin , Chrismawan Ardianto

75-81

Abstract : 158

PDF : 70

PDF

DOI : 10.20473/jfiki.v9i12022.75-81

Detection of Potentially Inappropriate Medication in Elderly Outpatient Based on The Beer's Criteria 2019

Nurmainah Nurmainah , Rindu Astuti

82-91

Abstract : 186

PDF : 145

PDF

DOI : 10.20473/jfiki.v9i12022.82-91

Antidiabetic Activity of Ethanolic Extract of Kale (*Brassica oleracea* var. *sabellica*)

Afdrian Kusumawardianingrum , Novena Yety Lindawati

92-100

Abstract : 178

PDF : 81

PDF

DOI : 10.20473/jfiki.v9i12022.92-100



Molecular Docking of Active Compound of *Lavandula angustifolia* Mill Essential Oil against N-methyl-D-aspartate (NMDA) Receptor

Baiq Risky Wahyu Lisnasari¹, Aniek Setiya Budiatin², Chrismawan Ardianto², Junaidi Khotib^{2*}

¹Undergraduate Program of Pharmacy, Faculty of Pharmacy, Universitas Airlangga, Surabaya, Indonesia

²Department of Pharmacy Practice, Faculty of Pharmacy, Universitas Airlangga, Surabaya, Indonesia

*Corresponding author: junaidi-k@ff.unair.ac.id

Submitted: 19 November 2021

Accepted: 2 February 2022

Published: 26 April 2022

Abstract

Background: Lavender oil is widely known to possess a relaxant effect to relieve stress, anxiety, and depression. Linalyl acetate, linalool, geranyl acetate, and β -caryophyllene were the major constituents of lavender oil that potentially act on NMDAR (N-methyl-d-aspartate receptors), and emerging targets in the treatment of depression.

Objective: This study aims to predict the binding of lavender compounds to NMDA receptors using an *in silico* model. **Methods:** The ligands of the docking study were four major chemical compounds of lavender oil, i.e., linalyl acetate, linalool, geranyl acetate, and β -caryophyllene. 5YE was defined as a native ligand, while memantine, an NMDAR antagonist, was used as a reference ligand. The NMDAR structure was taken from Protein Data Bank (ID 5H8Q), while the lavender compound was sketched in Chem3D. Autodock 4.2 was used to perform the docking analysis. **Results:** The result showed that beta-caryophyllene had the most potent interaction with NMDAR (free binding energy was -8.02 kcal/mol and inhibitory constant was 1.32 μ M). **Conclusion:** The docking results suggest that beta-caryophyllene could be an NMDAR antagonist and be developed as a treatment for depression.

Keywords: depression, lavender oil, molecular docking, NMDAR

How to cite this article:

Lisnasari, B. R. W., Budiatin, A. S., Ardianto, C., & Khotib, J. (2022). Molecular Docking of Active Compound of *Lavandula angustifolia* Mill Essential Oil against N-methyl-D-aspartate (NMDA) Receptor. *Jurnal Farmasi Dan Ilmu Kefarmasian Indonesia*, 9(1), 75-81. <http://doi.org/10.20473/jfiki.v9i12022.75-81>

INTRODUCTION

Essential oil from black seed (*Nigella sativa*), Japanese rush (*Acorus gramineus*), lavender (*Lavandula angustifolia*), blue gum (*Eucalyptus globulus*), peppermint (*Mentha piperita*), rosemary (*Rosmarinus officinalis*), sambac jasmine (*Jasminum sambac*), black pepper (*Piper nigrum*) and several other plants have been reported to have neuroprotective effects (Ayaz *et al.*, 2017). Lavender (*Lavandula angustifolia*) is the most widely used essential oil for aromatherapy (Wells *et al.*, 2018). Lavender oil is known for its delicate aroma and is commonly used in the perfume, flavoring, and cosmetic industries. Lavender has a long history of medicinal use and is reported to have antidepressants, anti-anxiolytic, sedative, analgesics, and calming effects (Wells *et al.*, 2018; Kang *et al.*, 2019; Lizarraga-Valderrama, 2021). Aromatherapy is considered therapeutically effective because of the inhaled volatile compounds' psychological effects, which are believed to act through the limbic system, particularly the amygdala and hippocampus (Fung *et al.*, 2021). While the exact cellular mechanism of action is unknown, it is predicted that lavender (based on studies on *L. angustifolia*) may have an effect similar to benzodiazepines and may enhance the effects gamma-aminobutyric acid (Lizarraga-Valderrama, 2021). In their publication, López *et al.* (2017) reported that the main constituents of lavender essential oil analyzed by GC-MS were linalyl acetate (52.1%), linalool (37.4%), geranyl acetate (5.4%), and β -caryophyllene.

Stress is one of the most common psychological disorders and is generally the beginning of other psychiatric disorders, such as anxiety, insomnia, and depression (López *et al.*, 2017). Currently, drugs for depression exert their effects by increasing the levels of biogenic amines, i.e., norepinephrine (NE), dopamine (DA), and serotonin (5HT) by various mechanisms, such as inhibiting the degradation or reuptake of neurotransmitters. However, these drugs have serious side effects, including sexual dysfunction, weight gain, sleep disturbance, etc., leading to an effective and better-tolerated antidepressant. On the other hand, the NMDA receptor family (N-methyl-D-aspartate) has received particular attention in psychiatric disorders, especially major depressive disorder (Pochwat *et al.*, 2019). Therefore, direct targeting of the NMDA receptor may yield alternative strategies for treating depression.

Docking is the process of interaction between two molecules in three-dimensional space. Molecular docking is a valuable tool in structural molecular biology and is a potential field for new drug discovery.

This method is widely used to predict the binding mode of the ligand to the protein. Applications of docking techniques include the prediction of new drug binding modes and the screening of active compounds. This study aims to predict the binding of lavender compounds to the receptors using an in silico model.

MATERIALS AND METHODS

Protein preparation

The crystal structure of the NMDA with ID 5H8Q was downloaded in PDB file format from the RCSB protein data bank and imported into AutoDock 4.2. Polar hydrogens and Kollman charges are then added to the protein. Considering that the water molecule is not involved in the ligand-receptor bonding process, the water molecule is removed. This step of removing water molecules may also significantly improve computations and prevent distortions that might occur.

Ligand preparation

The molecular structures of four major compounds from lavender oil are given in Figure 1. The structures of linalyl acetate, linalool, geranyl acetate, and β -caryophyllene were drawn using Chem3D. Next, energy minimization of each ligand was carried out using the MM4 force field, and then the ligands were stored in mol2 format. Finally, the ligands are imported into the AutoDock workspace. The nonpolar hydrogens were merged for each ligand, and the gasteiger charges were computed.

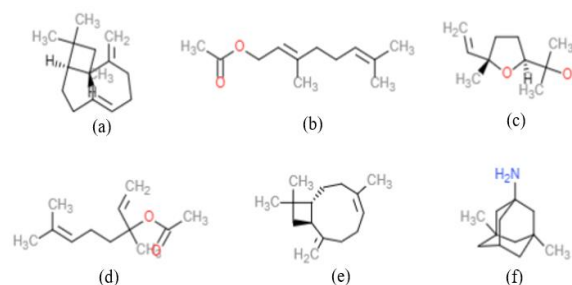


Figure 1. The molecular structure of (a) beta-caryophyllene, (b) geranyl acetate, (c) linalool, (d) linalyl acetate, (e) 5_YY, and (f) memantine

Docking

Molecular docking was performed using Autodock 4.2. Before the docking study was performed, the docking parameters and algorithm were validated by redocking the native ligand to the target receptor. According to the native ligand, a grid box of 14.595 Å x -14.301 Å x -25.15Å along x, y, and z was defined as a binding site. The docking parameters were left as

default, except the docking run was set to 30 for each compound. Finally, the Lamarckian Genetic Algorithm generated a molecular docking study. Root mean standard deviation (RMSD) lower than 2 Å suggested that the method could consistently predict the natural conformation of the ligand-receptor. Favorable conformation was selected based on the lowest energy binding and inhibitory constant (Ki).

Statistical analysis

The quantitative relationship between the chemical structure in lavender oil and its biological activity was determined by correlation analysis in the SPSS program. Analysis of the structure-activity relationship was carried out using the LFER Hansch model. In this study, lipophilic parameters involved were partition coefficient (logP), electronic parameter, i.e., ligand-receptor bond energy (binding energy), and steric parameter, i.e., molar refraction (MR). Linear and

nonlinear regression analysis was performed between lipophilic, steric, and electronic parameters with antidepressant activity. The equation with the best relationship significance was selected based on the values of r, F, and SD.

RESULTS AND DISCUSSION

The docking protocol was validated through a re-docking experiment using the native ligand. A root means square deviation (RMSD) value of less than 2 Å was observed, suggesting that the ligand-receptor conformation has a high docking accuracy. Another method to validate the docking parameters and algorithm is docking decoy ligands to the receptor's binding site (Huang *et al.*, 2006). Decoys are compounds that share similar physical properties with the reference ligand but may not bind to the target.

Table 1. Results of molecular docking of *Lavandula angustifolia* Mill compound with NMDA1/2 (5H8Q) receptors

No	Ligand	Binding Energy (kcal/mol)	Estimated Binding Constant (Ki) (µM)	Hydrogen bond	Interacting Amino Acid	Number of Binding Site Similar to Native Ligand
1	Beta-caryophyllene	-8.02	1.32	-	THR A: 242, GLU A: 132, PHE A: 130, VAL A: 131, GLY B: 250, PRO B: 141, PRO A: 129, TYR B: 144, ILE B: 128	9
2	Geranyl acetate	-6.49	17.60	-	PHE A: 130, VAL A: 131, GLU A: 132, PRO A: 129, TYR B: 144, THR A: 241, THR A: 242, PRO B: 141, GLY A: 243, HIS B: 273, LEU B: 270, LYS B: 140	12
3	Linalool	-5.91	46.83	THR A: 242	ILE B: 269, GLU A: 132, TYR B: 144, LYS B: 143, LEU B: 270, THR A: 241, LYS B: 140, HIS B: 273, THR A: 242, PRO A: 129, GLY A: 243, ILE A: 116, PRO B: 141	13
4	Linalyl acetate	-6.37	21.33	-	GLU A: 131, PHE A: 130, VAL A: 131, PRO A: 129, GLY A: 243, LYS B: 140, THR A: 242, LYS B: 143, PHE B: 142, THR A: 241, HIS B: 275, THR B: 144,	9
5	5YE (native ligand)	-10.43	22.75	THR A: 242	PHE B: 142, LYS B: 143, THR A: 241, THR A: 242, HIS B: 273, LYS B: 140, ILE A: 116, LEU B: 270, GLY A: 243, PRO B: 141, PHE A: 130, VAL A: 131, VAL A: 266, TYR B: 144, PRO A: 129, GLU A: 132, GLY B: 250	All
6	Memantine	-8.72	407.81	THR A: 133, THR A: 242, GLU A: 132	THR A: 133, THR A: 242, THR A: 241, GLU A: 132, PRO A: 129, HIS B: 273, TYR B: 144, PRO B: 141, GLY A: 243	9

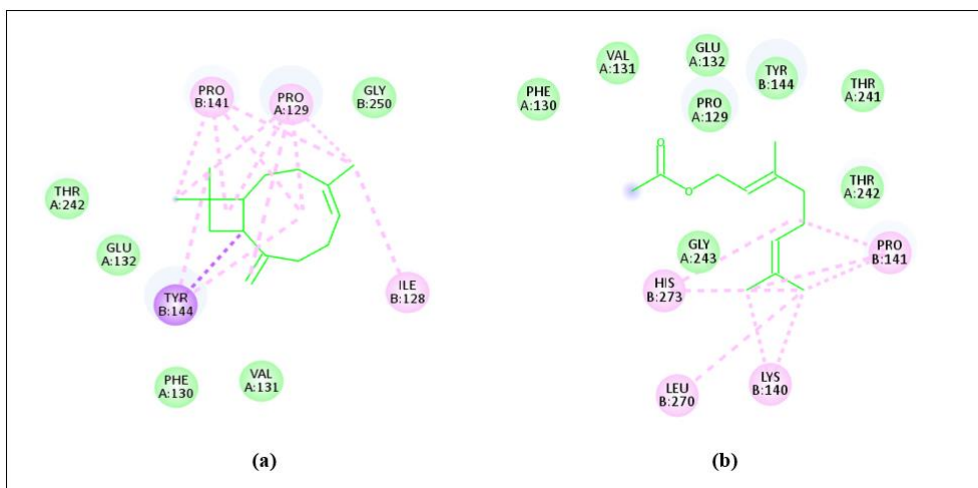


Figure 2. Interaction between (a) beta-caryophyllene and (b) geranyl acetate with N-methyl D-aspartate (NMDA) receptors

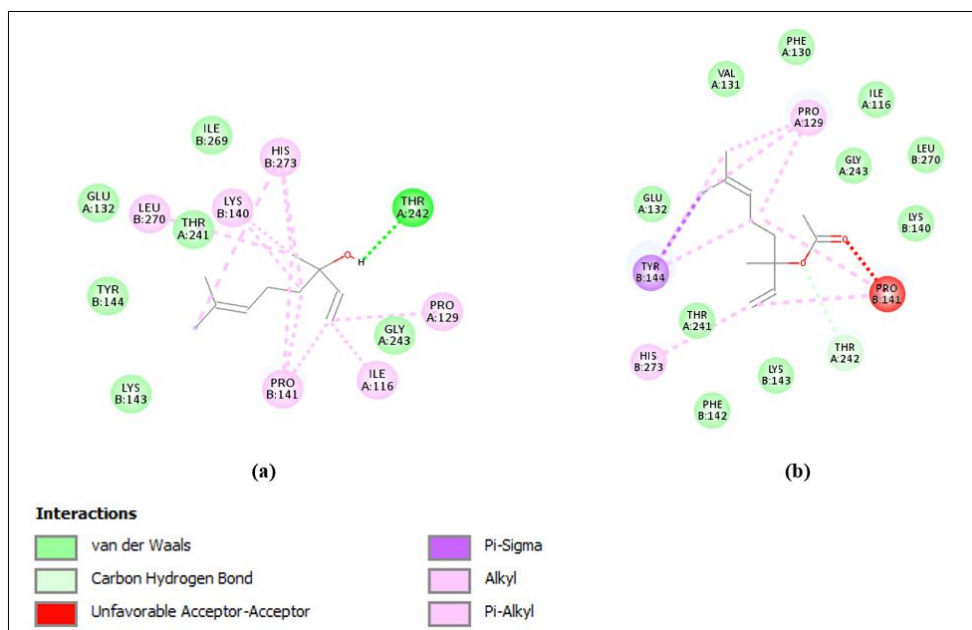


Figure 3. Interaction between (a) linalool and (b) linalyl acetate with N-methyl D-aspartate (NMDA) receptors

The molecular docking of the *Lavandula angustifolia* Mill compound components against the NMDA1/2 (5H8Q) receptor obtained using Autodock are presented in Table 1, while the 2D interactions are visualized in Figure 2 and 3. The docking results showed that all ligands from lavender oil were docked on the same binding site as the native ligand. Similar interactions with binding site residue indicate that the compound might exhibit inhibitory activity toward the receptor. Based on the docking data, we found that beta-caryophyllene has the lowest energy required to bind to the targeted receptor compared to other compounds. The binding energy is -8.02 kcal/mol, and K_i is 1.32 μ M.

Furthermore, the low binding energy value indicated the stability of the ligand-receptor interaction.

Interestingly, beta-caryophyllene has no hydrogen bond with the target receptor. The interaction formed is mainly hydrophobic via Pro B: 141, Pro A: 129, Tyr B: 144, and Ile B: 128 residues. Meanwhile, 5YE (native ligand) had binding energy of -10.43 kcal/mol and made one hydrogen bond, one pi-pi stacked, and five hydrophobic interactions (Figure 4a). Memantine, an NMDAR antagonist, had binding energy of -8.72 kcal/mol and formed three hydrogen bonds, one carbon-hydrogen bond, and four hydrophobic interactions (Figure 4b). Therefore, by comparing the binding energy of the three complexes, it is suggested that the contribution of hydrophobic interaction to binding affinity is comparable to electrostatic interaction.

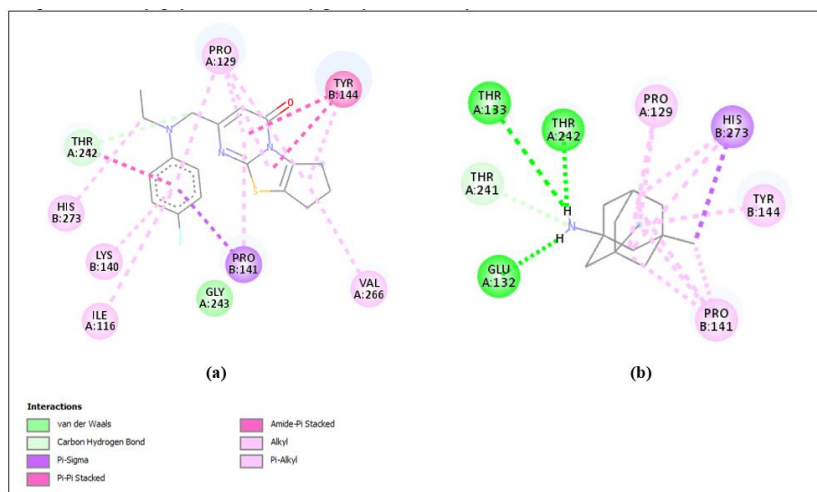


Figure 4. Interaction between (a) 5YE (native ligand) and (b) memantine (reference ligand) with N-methyl D-aspartate (NMDA) receptors

Table 2. The value of electronic properties (σ), lipophilic properties (π), steric properties (RM), and log activity of each lavender compound

Ligand	σ	π	π^2	RM	Log A
Beta-caryophyllene	-8.02	4.32	18.662	67.452	-0.12
Geranyl acetate	-6.49	3.25	10.563	60.334	-1.245
Linalool	-5.91	2.55	6.503	50.206	-1.67
Linalyl acetate	-6.37	3.189	10.170	59.357	-1.33

Linalool is the only compound that forms a hydrogen bond with the targeted receptor, but this compound has the highest energy to bind to the receptor (-5.91 kcal/mol) and the highest K_i (46.83 μ M). Meanwhile, the ester of linalool, linalyl acetate, has a slightly higher binding affinity, evidenced by the free binding energy of -6.37 kcal/mol and K_i of 21.33 μ M. The in-vitro study supports this result reporting the monoterpenes (linalool and linalyl acetate) can inhibit NMDA receptor, in which linalyl acetate has the greater inhibition against the receptor (0.54 mM and 2.3 mM for linalyl acetate and linalool, respectively) (López *et al.*, 2017). Indeed, the presence of the acetate group is predicted to increase the compound's acts on the NMDA receptor. This may explain the higher affinity of geranyl acetate geranyl acetate's affinity toward the receptor (binding energy -6.49 kcal/mol and K_i 17.60), compared to linalool. To summarize the findings, the lavender compound with the best affinity against NMDA receptors is beta-caryophyllene, followed by geranyl acetate, linalyl acetate, and linalool.

The value of electronic, lipophilic, and steric properties of each lavender compound is given in Table 2. Statistical analysis was conducted to examine the correlation between the compound structure and its activity. It was found that the electronic property (binding energy) is the parameter that is most related to

compound activity, as indicated by the values of r , r^2 , F , and S . The closer to 1 the value of r , the higher the value of r^2 and F , and the smaller the value of S , the greater the significance of the relationship between physical chemistry parameters and compound activity. The linear regression equation of electronic parameters with antidepressant activity is $\text{Log A} = 0.992 \sigma + 2.229$ ($r = 0.992$; $r^2 = 0.984$; $F = 124.658$; $S = 0.2$; $\text{Sig} = 0.008$), while the linear equation of lipophilic parameters is $\text{Log A} = 0.418 \pi - 10.457$ ($r = 0.418$; $r^2 = 0.175$; $F = 0.424$; $S = 16.067$; $\text{Sig} = 0.582$), and the equation of steric parameters is $\text{Log A} = 0.411 \text{RM} - 1.065$ ($r = 0.411$; $r^2 = 0.169$; $F = 0.406$; $S = 1.672$; $\text{Sig} = 0.589$). These results indicate that the binding energy value is the most significant parameter in influencing the antidepressant activity of compounds in lavender.

A recent systematic review and meta-analysis of randomized controlled studies reported that lavender oil significantly reduced depressive scores compared to the control group (Firoozeei *et al.*, 2021). As lavender oil is mainly used in the inhalation method, it can cross the blood-brain barrier, has a faster onset, and limited side effects. Inhaled essential oil is thought to have better bioavailability than oral drugs, ascribed to its high lipid solubility and minimal to zero hepatic metabolisms (Ayaz *et al.*, 2015). The molecular pathway of lavender oil in exerting its antidepressant and antianxiety effect is

reported through the inhibition of NMDA receptor, 5HT_{1A} receptor, serotonin transporter, voltage-gated calcium channel, and neurotoxic agent as hydrogen peroxide (López *et al.*, 2017; Firoozeei *et al.*, 2021). Linalool is the most studied lavender oil compound for its anxiolytic effect. Linalool was reported to have a relaxant effect, increased social interaction and reduced aggressive behavior in the animal model (Ayaz *et al.*, 2017). Previously, it was reported that beta-caryophyllene could improve rat depressive-like behavior and suppress the altered hippocampal expression of BDNF, COX-2, and CB2 receptors (Hwang *et al.*, 2020).

Targeting the classic monoaminergic receptor, the current antidepressants on the market, such as selective serotonin reuptake inhibitor (SSRI) or serotonin-norepinephrine reuptake inhibitor (SNRI), have become unfavorable to the lack of efficacy and prominent side effects. This limitation leads to finding an alternative antidepressant with better efficacy and tolerability. In recent years, the glutamate receptor has been emerging as a key target of antidepressants, owing to the rapid and robust antidepressant effect of ketamine, an NMDA receptor antagonist (Machado-Viera *et al.*, 2017). Glutamate is the main excitatory neurotransmitter in the brain and is involved in neurotoxicity by activating the NMDA receptor. Thus, targeting the NMDA receptor may exert a neuroprotective effect that improves depressive symptoms. In this study, we find that the primary compound of lavender oil has an affinity to bind to the NMDA receptor and act as an inhibitor. Beta-caryophyllene has the best binding affinity, making it a promising compound for further development as an NMDA receptor antagonist and a new candidate of antidepressant.

Beta-caryophyllene is a component of *L. angustifolia* with a molecular weight of 204.357 g/mol and a logP of 4.73. Geranyl acetate has high absorption in the gastrointestinal tract, where it is predicted that 94.85% will be absorbed through the intestine. This compound also has good permeability to the blood-brain barrier, with a predictive value of 0.733 logBB. In addition, geranyl acetate is not a substrate for P-gp, a transporter that acts as a biological barrier that removes toxins and xenobiotics from cells (Pires *et al.*, 2015).

Despite its wide application, molecular docking also has a limitation, including the wrong binding site to the target, the choice of docking pose, the uncertainty of whether a compound is a true antagonist or agonist, and the nonlinearity of the docking and molecular dynamic simulation results (Chen, 2014). The

molecular dynamic simulation is warranted to further investigate the stability of ligand binding poses to protein (Liu *et al.*, 2017).

CONCLUSION

In silico molecular docking, the analysis revealed that beta-caryophyllene has the lowest binding energy (-8.02 kcal/mol) to NMDA receptor, suggesting its potential as an inhibitor of the NMDA receptor its future use as an antidepressant agent. Analysis of the structure-activity relationship indicates that the ligand-receptor bond energy was the parameter that most influenced the compound's activity. Further preclinical research of the compound in lavender oil needs to be carried out to validate the in silico results.

ACKNOWLEDGMENT

We would like to thank Prof Siswandono for guiding the Moldoc Program in drug design and development.

AUTHOR CONTRIBUTIONS

Conceptualization, B.R.W.L., A.S.B., J.K.; Methodology, B.R.W.L., A.S.B., C.A.; Software, B.R.W.L.; Validation, C.A.; Formal Analysis, B.R.W.L.; Investigation, B.R.W.L.; Resources, J.K.; Data Curation, B.R.W.L., C.A., J.K.; Writing - Original Draft, B.R.W.L.; Writing - Review & Editing, J.K.; Visualization, B.R.W.L.; Supervision, C.A.; Project Administration, B.R.W.L.; Funding Acquisition, J.K.

CONFLICT OF INTEREST

The authors declared no conflict of interest.

REFERENCES

- Ayaz, M., Junaid, M., Ullah, F., Sadiq, A., Khan, M. A., Ahmad, W., Shah, M. R., Imran, M. & Ahmad, S. (2015). Comparative Chemical Profiling, Cholinesterase Inhibitions and Anti-Radicals Properties of Essential Oils from *Polygonum hydropiper* L: a Preliminary Anti-Alzheimer's Study. *Lipids in Health and Disease*; 14; 1–12. doi: 10.1186/s12944-015-0145-8.
- Ayaz, M., Sadiq, A., Junaid, M., Ullah, F., Subhan, F. & Ahmed, J. (2017). Neuroprotective and Anti-Aging Potentials of Essential Oils from Aromatic and Medicinal Plants. *Frontiers in Aging Neuroscience*; 9; 1–16. doi: 10.3389/fnagi.2017.00168.

- Chen, Y. C. (2014). Beware of docking!. *Trends in Pharmacological Sciences*; 36; 78–95. doi: 10.1016/j.tips.2014.12.001.
- Firoozeei, T. S., Feizi, A., Rezaeizadeh, H., Zargarani, A., Roohafza, H. R. & Karimi, M. (2021). The Antidepressant Effects of Lavender (*Lavandula angustifolia* Mill.): A Systematic Review and Meta-Analysis of Randomized Controlled Clinical Trials. *Complementary Therapies in Medicine*; 59; 1-13. doi: 10.1016/j.ctim.2021.102679.
- Fung, T. K. H., Lau, B. W. M., Ngai, S. P. C. & Tsang, H. W. H. (2021). Therapeutic Effect and Mechanisms of Essential Oils in Mood Disorders: Interaction between the Nervous and Respiratory Systems. *International Journal of Molecular Sciences*; 22; 1-17. doi: 10.3390/ijms22094844.
- Huang, N., Shoichet, B. K. & Irwin, J. J. (2006). Benchmarking Sets for Molecular Docking. *Journal of Medicinal Chemistry*; 49; 6789–6801. doi: 10.1021/jm0608356.
- Hwang, E. S., Kim, H. B., Lee, S., Kim, M. J., Kim, K. J., Han, G., Han, S. Y., Lee, E. A., Yoon, J. H., Kim, D. O., Maeng, S. & Park, J. H. (2020). Antidepressant-Like Effects of β -caryophyllene on Restraint Plus Stress-Induced Depression. *Behavioural Brain Research*; 380; 1-8. doi: 10.1016/j.bbr.2019.112439.
- Kang, H. J., Nam, E. S., Lee, Y. & Kim, M. (2019). How Strong is the Evidence for the Anxiolytic Efficacy of Lavender?: Systematic Review and Meta-analysis of Randomized Controlled Trials. *Asian Nursing Research*; 13; 295–305. doi: 10.1016/j.anr.2019.11.003.
- Liu, K., Watanabe, E. & Kokubo, H. (2017). Exploring the Stability of Ligand Binding Modes to Proteins by Molecular Dynamics Simulations. *Journal of Computer-Aided Molecular Design*; 31; 201–211. doi: 10.1007/s10822-016-0005-2.
- Lizarraga-Valderrama, L. R. (2021). Effects of Essential Oils on Central Nervous System: Focus on Mental Health. *Phytotherapy Research*; 35; 657–679. doi: 10.1002/ptr.6854.
- López, V., Nielsen, B., Solas, M., Ramírez, M. J. & Jäger, A. K. (2017). Exploring Pharmacological Mechanisms of Lavender (*Lavandula angustifolia*) Essential Oil on Central Nervous System Targets. *Frontiers in Pharmacology*; 8; 1–8. doi: 10.3389/fphar.2017.00280.
- Machado-Viera, R., Henter, I. D. & Zarate Jr., C. A. (2017). New Targets for Rapid Antidepressant Action. *Progress in Neurobiology*; 152; 1-37. doi: 10.1016/j.pneurobio.2015.12.001.
- Pires, D. E. V., Blundell, T. L. & Ascher, D. B. (2015). pkCSM: Predicting Small-Molecule Pharmacokinetic and Toxicity Properties Using Graph-Based Signatures. *Journal of Medicinal Chemistry*; 58; 4066–4072. doi: 10.1021/acs.jmedchem.5b00104.
- Pochwat, B., Nowak, G. & Szewczyk, B. (2019). An Update on NMDA Antagonists in Depression. *Expert Review of Neurotherapeutics*; 19; 1055–1067. doi: 10.1080/14737175.2019.1643237.
- Wells, R., Truong, F., Adal, A. M., Sarker, L. S. & Mahmoud, S. S. (2018). Lavandula Essential Oils: a Current Review of Applications in Medicinal, Food, and Cosmetic Industries of Lavender. *Natural Product Communications*; 13; 1403–1417. doi: 10.1177/1934578X1801301038.



JURNAL FARMASI DAN ILMU KEFARMASIAN INDONESIA

FAKULTAS FARMASI UNIVERSITAS AIRLANGGA

P-ISSN : 24069388 < > E-ISSN : 25808303

1,14583
Impact Factor

478
Google Citations

S2
Current Accreditation

History Accreditation

2017 2018 2019 2020 2021 2022 2023 2024

Google Scholar Garuda

[Evaluasi Obat Kadaluwarsa, Obat Rusak dan Stok Mati di Puskesmas Wilayah Magelang](#)

Authors : R Nurma Khairani, E Latifah, N Made Ayu Nila Septianingrum [Jurnal Farmasi dan Ilmu Kefarmasian Indonesia 8 \(1\), 91-97, 2021](#)

2021 [5 cited](#) [S2 Journal](#)

[Penetapan Kandungan Total Fenolik-Flavonoid pada Fraksi Etil Asetat Kulit Batang Kasturi \(Mangifera casturi Kosterman\)](#)

Authors : H Ramadhan, D Permata Rezky, F Fitri Susiani [Jurnal Farmasi dan Ilmu Kefarmasian Indonesia 8 \(1\), 58-67, 2021](#)

2021 [8 cited](#) [S2 Journal](#)

[Aphrodisiac Activity of Ethanolic Extracts from the Fruits of Three Pepper Plants from Piperaceae Family](#)

Authors : N Kusumawati, S Mahatmaputra, R Hadi, R Rohmania, S Rullyansyah, ... [Jurnal Farmasi dan Ilmu Kefarmasian Indonesia 8 \(2\), 194-199, 2021](#)

2021 [0 cited](#) [S2 Journal](#)

[Optimasi Kondisi Fermentasi pada Produksi Metabolit Antibakteri dari Bacillus tequilensis BSME Simbiotik Halichondria panicea](#)

Authors : N Pramessti Wardani, A Toto Poernomo, I Isnaeni [Jurnal Farmasi dan Ilmu Kefarmasian Indonesia 8 \(2\), 187-193, 2021](#)

2021 [0 cited](#) [S2 Journal](#)

[Karakteristik dan Stabilitas Fisik NLC-Koenzim Q10 dalam Sleeping Mask dengan Minyak Nilam](#)

Authors : F Dita Mayangsari, T Erawati, W Soeratri, N Rosita [Jurnal Farmasi dan Ilmu Kefarmasian Indonesia 8 \(2\), 178-186, 2021](#)

2021 [1 cited](#) [S2 Journal](#)

[Optimasi Aristoflex® AVC dan Propilen Glikol Gel Tabir Surya Rimpang Kunyit dengan Metode Desain Faktorial](#)

Authors : A Sumule, G Pamudji, E Diyah Iksari [Jurnal Farmasi dan Ilmu Kefarmasian Indonesia 8 \(2\), 168-177, 2021](#)

2021 [0 cited](#) [S2 Journal](#)

[Evaluasi Rasionalitas Penggunaan Obat Neuroprotektif pada Pasien Stroke Iskemik di Rumah Sakit Stroke Nasional Bukittinggi](#)

Authors : D Permatasari, D Ayu Juwita, R Yosmar, J Fajar Rahmat Illahi [Jurnal Farmasi dan Ilmu Kefarmasian Indonesia 8 \(2\), 162-167, 2021](#)

2021 [1 cited](#) [S2 Journal](#)

[Analisis Boraks pada Jajanan Bakso di Kota Jambi](#)

Authors : S Gustini, D Yulianis, Yulianis, Sutrisno [Jurnal Farmasi dan Ilmu Kefarmasian Indonesia 8 \(2\), 156-161, 2021](#)

2021 [0 cited](#) [S2 Journal](#)

[The Short Form-6 Dimension \(SF-6D\) Validity and Reliability in Hemodialysis Patients](#)

Authors : A Zulfa Fatihah, T Murti Andayani, N Munif Yasin [Jurnal Farmasi dan Ilmu Kefarmasian Indonesia 8 \(2\), 150-155, 2021](#)

2021 [0 cited](#) [S2 Journal](#)

[Aktivitas Gel Fraksi Etil Asetat dari Ekstrak Etanol Daun Ubi Jalar Untuk Pengobatan Luka Bakar](#)

Authors : H Fajar Rahmadani, D Pratimasari, M Saiful Amin [Jurnal Farmasi dan Ilmu Kefarmasian Indonesia 8 \(2\), 143-149, 2021](#)

2021 [1 cited](#) [S2 Journal](#)

[View more ...](#)