

ISSN: 2123-4567

IJDOR

INTERNATIONAL JOURNAL OF DEVELOPMENT RESEARCH

VOL.07, ISSUE 11, NOVEMBER 2017

www.journalijdr.com

2017

INTERNATIONAL JOURNAL OF DEVELOPMENT RESEARCH

(INTERNATIONAL PEER REVIEWED JOURNAL: OPEN ACCESS: ISSN: 2230-9926: IMPACT FACTOR: 7.012)

Qualis-CAPES (A2) (BRAZIL)



Monthly Publication: High Visibility: Rapid Publication; Scholarly Publishing Journal



https://doi.org/10.37118



- HOME
- EDITORIAL BOARD
- AUTHOR INFORMATION
- IMPACT FACTORS
- CURRENT ISSUE
- PAST ISSUES
- SUBMIT ARTICLES
- REVIEWERS FORM
- CONTACT US

EXPLORE JOURNAL CONTENT

- Instruction to author
- Abstracting & Indexing
- Current Issue
- Archive
- Editorial Board
- Manuscript Online Submission
- Peer Review Process
- Plagiarism Policy
- Publication Policy and Ethics
- Contact Us

QUALIS-CAPES

November 2017

- Determinants of women unemployment: evidence from ethiopia (case of halabatown, snnpr)
Gizachew Gobebo, Wondaferahu Mulugeta and Temesgen Yaekob
[Original Article](#) Volume: 7, Article ID: 7472
- Random iteration methods for strictly pseudo-contractive operators
Agrawal, N.K. and Guptaeshwar Gupta
[Original Article](#) Volume: 7, Article ID: 8696
- A contextualized study of vivekananda's neo-vedanta (through karl mannheim approach of sociology of knowledge)
Dr. Nosheen Zaheer and Zainab Mazhar
[Original Article](#) Volume: 7, Article ID: 10094
- On-farm phenotypic characterization of indigenous chicken populations in guji zone of oromia national regional state, Ethiopia
Abebe Hailu, Manaye Misganaw, Abraham Assefa, Fassil
[Original Article](#) Volume: 7, Article ID: 10160

CHIEF EDITOR

Prof. Dr. Ismail Hakki NUR - Türkiye

ONLINE PAYMENT: PAYPAL



MONTHLY ARCHIVE

- May 2021
- April 2021
- March 2021
- February 2021
- January 2021

Contact Us

QUALIS-CAPES

- Qualis-CAPES (A2)
- Submit Manuscript - Qualis IJDR

AUTHORS

- Manuscript Online Submission
- Paper Submission Guidelines
- How to Publish a Research Paper
- Publication Certificate
- Impact Factor 2019
- Cover Images
- Call for Papers May 2021
- Copyright Form
- Contact Us

BROWSE SUBJECTS

- Agriculture
- Auxiliary sciences of history
- Bibliography, Library science.

- On-farm phenotypic characterization of indigenous chicken populations in guji zone of oromia national regional state, Ethiopia
Abebe Hailu, Manaye Misganaw, Abraham Assefa, Fassil
[Original Article](#) Volume: 7, Article ID: 10160
- Psychosocial evaluation for prevalence of sleep disorders in patients of somatoform disorders visiting psychosomatic clinic in tertiary care centre, vidarbha
Ratika Sharma and Prakriti Vohra
[Original Article](#) Volume: 7, Article ID: 10202
- Dynamic processes of students learning on initial teacher training
Fernanda Gouveia and Paulo Brazão
[Original Article](#) Volume: 7, Article ID: 10390
- Prevalence of leiomyoma in patients with abnormal uterine bleeding
Jinonath, S.K., Dr. Hephzibah Kirubamani, N. and Dr. Vanusha, A.
[Original Article](#) Volume: 7, Article ID: 10418
- Fracture risk assessment in post-menopausal women with frax tool
Jeffrey Xavier, A. and Dr. Hephzibah Kirubamani, N.
[Original Article](#) Volume: 7, Article ID: 10445
- Smart agriculture using automation system
Rashmi Pawar and Jadhav, A. S.
[Original Article](#) Volume: 7, Article ID: 10451
- Prosperity of retail business in Virudhunagar
Prof. Gurusamy, M. and Dr. Anbalagan, M.
[Original Article](#) Volume: 7, Article ID: 10486
- A critical review on single cell protein production using different substrates
Anamika Malav, Seema Meena, Meenakshi Sharma, Manju Sharma and Prahlad Dube
[Original Article](#) Volume: 7, Article ID: 10488
- High-resolution vertical electrical sounding survey: investigation of subsurface structures at dashgll's mud volcano, Azerbaijan

- April 2021
- March 2021
- February 2021
- January 2021
- December 2020
- November 2020
- October 2020
- September 2020
- August 2020
- July 2020
- June 2020
- May 2020
- April 2020
- March 2020
- February 2020
- January 2020
- December 2019
- November 2019
- October 2019
- September 2019
- August 2019
- July 2019
- June 2019

November 2017 | International Journal of Developmental Psychology | Detection of encoding gene expression | international journal of developmental psychology | JPG ke PDF - Konversi gambar | journalijdr.com/archive/201711

BROWSE SUBJECTS

- Agriculture
- Auxiliary sciences of history
- Bibliography. Library science.
- Information resources
- Education
- Fine Arts
- General Works
- Geography. Anthropology. Recreation
- History (General)
- History America
- Language and Literature
- Medicine
- Military Science
- Music and books on Music
- Naval Science
- Philosophy. Psychology. Religion
- Political science
- Science
- Social Sciences
- Technology

11. A critical review on single cell protein production using different substrates
Anamika Malav, Seema Meena, Meenakshi Sharma, Manju Sharma and Prahlad Dube
Original Article Volume: 7, Article ID: 10488

12. High-resolution vertical electrical sounding survey: investigation of subsurface structures at dashgli's mud volcano, Azerbaijan
Avaz Mahmud Salamov, Samir Gasim Mammadov, Azer Hamid Gadrirov and Rafiq Tofig Safarov
Original Article Volume: 7, Article ID: 10531

13. Periodontal disease in hiv patients
Leticia S. Estefaneli, Kayanny R. Marques, Leandro MoreiraTempest, Idiberto JoséZotarelli Filho and Patricia Garani Fernandes
Original Article Volume: 7, Article ID: 10551

14. Education policies in kenya: does free secondary education promote equity in public secondary schools?
Reuben Gitonga Mutegi, Moses Kinyanjui Muriithi and Genevieve Wanjala
Original Article Volume: 7, Article ID: 10588

15. The thickness and density of pawon man mandible body cortical bone and alveolar using cone beam computed tomography (cbct)
Azhari, Lusi Epsilawati, Fahmi Oscandar, Wisam and Lutfi, Y.
Original Article Volume: 7, Article ID: 10608

16. Genetic variability, heritability, correlation and path analysis studies in green gram (vigna radiata l.wilczek)
Kate, A. M., Dahat, D. V. and Chavan, B. H.
Original Article Volume: 7, Article ID: 10681

17. Effectiveness of foot massage on pain, heart rate among patient underwent abdominal surgery
Dr. Aruna, S.
Original Article Volume: 7, Article ID: 10687

18. Evaluation and comparison of the characteristics of three processable lithium diisilicate glass ceramic materials

- October 2019
- September 2019
- August 2019
- July 2019
- June 2019
- May 2019
- April 2019
- March 2019
- February 2019
- January 2019
- December 2018
- November 2018
- October 2018
- September 2018
- August 2018
- July 2018
- June 2018
- May 2018
- April 2018
- March 2018
- February 2018
- January 2018
- December 2017

images-dikonversi.pdf | images.jpg | 11116.pdf | [Tampilkan semua](#)

Type here to search

November 2017 | International Journal of Developmental Psychology | Detection of encoding gene expression | international journal of developmental psychology | JPG ke PDF - Konversi gambar | journalijdr.com/archive/201711

19. Evaluation and comparison of the characteristics of three processable lithium diisilicate glass ceramic materials
KatsuraOhashi, Yuka Kameyama, Yuuki Wada, Tomoyasu Midono, Kaori Miyake, Karl-Heinz Kunzelmann and Tomotaro Nihei
Original Article Volume: 7, Article ID: 10731

20. Team-based learning (tbl) in traditional curriculum: assessment of students' acceptance
Francisco José Mendes dos Reis, Ernesto Antonio Figueiró-Filho, Maria Lucia Ivo, Maria Angélica Marchetti, Rodrigo Juliano Oliveira and Valter Aragão do Nascimento
Original Article Volume: 7, Article ID: 10732

21. Self appraisal on communicative competence by elt students in Indonesia
Hery YufriZal, Cucu Sutarsyah and Mulyanto Widodo
Original Article Volume: 7, Article ID: 10753

22. Shape memory polymers and shape memory alloys: use in smart textiles
Ismail YÜCE
Original Article Volume: 7, Article ID: 10761

23. Global assessment of fossil fuels research output: a scientometric study
Indrani, M. and Dr. Murugan, C.
Original Article Volume: 7, Article ID: 10762

24. Arginase-1, fibronectin, il-13, tissue inhibitor of metalloproteinase-1 as indicator hepatocellular carcinoma on sprague-dawleyrats induced by diethylnitrosamine and n-morpholine
Siti Muchayat Purmamaningsih
Original Article Volume: 7, Article ID: 10771

25. Growth charts among a selected sample of lebanese infants from birth until 2 years of age: association with breastfeeding and child rank in the family
Titsiana Maria SamirMahayri
Original Article Volume: 7, Article ID: 10790

25. Actions performed by the family health support centers: an analysis of the results from the second cycle of the

- November 2017
- October 2017
- September 2017

images-dikonversi.pdf | images.jpg | 11116.pdf | [Tampilkan semua](#)

Type here to search

November 2017 | International J... x Detection of encoding gene exte... x international journal of develop... x JPG ke PDF - Konversi gambar A... x +

journalijdr.com/archive/201711

26. Examining methods used by physical education teachers against problem behaviors
Gülsüm Hatipoğlu Özcan
[Original Article](#) Volume: 7, Article ID: 10795
27. Lipidmediators pro-inflammationresolution in periodontal disease: review of literature
João AbadioOliveira Neto, Carolina Filippin, Jeniffer Fernandes Cristina, Andreia Borges-Scriboni, Idiberto José Zotarelli Filho and Patricia Garani Fernandes
[Original Article](#) Volume: 7, Article ID: 10803
28. Biofertilizers obtained from fish by-products aimed at improving the biological functions of soils and plants application to corn silage
Hammoutou, S., Aziane, A., Aouane, E., Chaouch, A. and El yachloui, M.
[Original Article](#) Volume: 7, Article ID: 10817
29. Valuation of the frequency of cardiovascular brain events in hypertensive patients with and without blood pressure control
Natália Duarte Moreira Marques, Larissa Geovana Fonseca Rocha, Jonatas Silva Souza, Claudia Kämpel, Antônio Adolfo Mattos de Castro and Elias Ferreira Pôrto
[Original Article](#) Volume: 7, Article ID: 10823
30. Socio-economic values of the alboran marine protected area in the moroccan mediterranean: reference state for monitoring the impact of the mpa performance
Malouli Idrissi Mohammed, Bazairi Hocein, Erraoui Hassan and Bakkali Saad
[Original Article](#) Volume: 7, Article ID: 10852
31. Diaspora, dedication and development (3d): Indian perspective
Satya Bhan Yadav
[Original Article](#) Volume: 7, Article ID: 10858
32. Comparative analysis of barite and hematite used in water-based drilling fluid
Prabhat Ranjan and Adityam Dutta
[Original Article](#) Volume: 7, Article ID: 10862

images-dikonversi.pdf images.jpg 11116.pdf [Tampilkan semua](#)

Type here to search

6:51 24/05/2021

November 2017 | International J... x Detection of encoding gene exte... x international journal of develop... x JPG ke PDF - Konversi gambar A... x +

journalijdr.com/archive/201711

- Geyin Boli and Binam Pertin
[Original Article](#) Volume: 07, Article ID: 11381
112. Maternal body mass index and pregnancy outcomes
Dr. Swarnima Saxena, Dr. L.D. Kapadia and Dr. Shirish Toshniwal
[Original Article](#) Volume: 07, Article ID: 11094
113. Investigation of the audit teaching and learning process in the nursing course: Cross-sectional study
Geany Oliveira de Lima, Alexsandra Figueiredo de Souza, Ismar Gurgei Coqueiro, Francisca Priscila Duarte de Figueiredo, Roberta Oliveira da Costa, Osvaldo Pereira da Costa Sobrinho, Gilberto Santos Cerqueira João Erivan Barreto Façanha, Jonas Nogueira Fe
[Original Article](#) Volume: 07, Article ID: 11103
114. Multiprofessional performance: the importance of evaluating the patient's social context
Luciana Shirley Pereira Zanela and Alexandra Maria Almeida Carvalho Pinto
[Original Article](#) Volume: 07, Article ID: 11105
115. [Detection of encoding gene extended spectrum beta lactamase on escherichia coli isolated from broiler chicken meat in traditional market surabaya](#)
Rinda Dewi Safitri, Risi Cicilia, Intan Galuh Bintari, Intan Permatasari Hermawan, Mustofa Helmi Effendi Rahaju Emawati and Jola Rahmahani
[Original Article](#) Volume: 07, Article ID: 11116
116. Raja rao as an adept in projecting kanthapura as a prominent social document: An analysis
Dr. Chelliah, S.
[Original Article](#) Volume: 7, Article ID: 11151
117. Study of appropriateness of turbo-matching of a58n75 and a58n72 turbochargers for a commercial vehicle engine
Badal Dev Roy and Saravanan Rathinasamy
[Original Article](#) Volume: 07, Article ID: 11168
118. [Machematic analysis of kalpana's suk-antasthad. Makur Takuk. Velasapadi Dintat](#)

images-dikonversi.pdf images.jpg 11116.pdf [Tampilkan semua](#)

Type here to search

6:50 24/05/2021



ORIGINAL RESEARCH ARTICLE

OPEN ACCESS

DETECTION OF ENCODING GENE EXTENDED SPECTRUM BETA LACTAMASE ON *ESCHERICHIA COLI* ISOLATED FROM BROILER CHICKEN MEAT IN TRADITIONAL MARKET SURABAYA

^{1,*}Rinda Dewi Safitri, ¹Risi Cicilia, ¹Intan Galuh Bintari, ¹Intan Permatasari Hermawan, ²Mustofa Helmi Effendi ³Rahaju Ernawati and ³Jola Rahmahani

¹Student, Master Program of Medicine and Veterinary Public Health, Faculty of Veterinary Medicine, Universitas Airlangga

²Department of Veterinary Public Health, Faculty of Veterinary Medicine, Universitas Airlangga

³Department of Veterinary Microbiology, Faculty of Veterinary Medicine, Universitas Airlangga

ARTICLE INFO

Article History:

Received 22nd August 2017

Received in revised form

07th September, 2017

Accepted 16th October, 2017

Published online 30th November, 2017

Key Words:

Extended Spectrum β -Lactamase,
Escherichia coli,
broiler chicken meat,
*bla*_{TEM} gene,
Antimicrobial Resistance.

ABSTRACT

This study aims to isolate, to identify, and to seek out fragments of encoding gene Extended Spectrum β -Lactamase on *Escherichia coli* isolated from swab surface of broiler chicken meat in a number of traditional markets in Surabaya. The result shows that 31 out of 50 samples positively contain *Escherichia coli*, shown through EMBA isolation media and identified using indole test. Sensitivity test shows that 100% of the isolates are resistant to Ampicillin, 48.4% are resistant to Cephazoline, 13% are resistant to Ceftazidime, 9.6% are resistant to Cefotaxime, 6.4% are resistant to Ceftriaxone and 87.2% are resistant to Tetracycline. 8 out of 8 (100%) samples of *E. coli* resistant show the presence of band towards *bla*_{TEM} gene of 861 basepair (bp).

Copyright ©2017, Rinda Dewi Safitri et al. This is an open access article distributed under the Creative Commons Attribution License, which permits unrestricted use, distribution, and reproduction in any medium, provided the original work is properly cited.

Citation: Rinda Dewi Safitri, Risi Cicilia, Intan Galuh Bintari, Intan Permatasari Hermawan, Mustofa Helmi Effendi Rahaju Ernawati and Jola Rahmahani, 2017. "Detection of encoding gene extended spectrum beta lactamase on escherichia coli isolated from broiler chicken meat in traditional market surabaya", *International Journal of Development Research*, 7, (11), 17354-17357.

INTRODUCTION

The phenomenon of antibiotic resistance is a health problem occurring all over the world with various adverse effects which can degrade the quality of health service. At least 23,000 out of 2 million people die each year resulting from bacterial infections which are resistant to more than one type of antibiotics. One of the bacteria which often carries such resistant property is Extended Spectrum Beta Lactamase (ESBL) bacteria produced by Enterobacteriaceae, especially *Escherichia coli* (Nathisuwan et al., 2001). The increasing occurrence of *E. coli* resistance, especially Extended Spectrum β -lactamase (ESBL) constitutes a serious issue (Rocha-Gracia et al., 2014). This is due to the fact that one of the transmission pathways is through animal source food contaminated by resistant bacteria.

*Corresponding author: Mustofa Helmi Effendi,
Department of Veterinary Public Health, Faculty of Veterinary Medicine, Universitas Airlangga.

Chicken is one of animal source food which is prone to bacterial contamination for it contains an ideal substrate supporting the growth of contaminant bacteria, such as *E. coli*. *E. coli* bacteria are among the most common contaminant bacteria to contaminate meat (Norrung et al., 2009). *bla*_{TEM} which are resistant to antibiotics in food-producing animals, such as chickens, are of particular concern, since *E. coli* is able to transmit resistant genes to human populations (Molbak, 2004). Molecular analysis on resistant genes and cellular elements of antibiotic resistant shows that identical elements are found in bacteria which contaminate both animals and humans. It signifies the role of raw food as a medium in the contamination of resistant bacteria and resistant genes on human being through the food chain (Teuber, 2001; Odwar et al., 2015). Of the above explanation, study on detection of encoding gene of Extended Spectrum Beta-lactamase in *Escherichia coli* isolated from broiler chicken meat taken from traditional market in Surabaya is considered to be essential to conduct.

METHODOLOGY

SAMPLING

The samples were taken from five traditional markets in Surabaya; they are Pabean market (North Surabaya), Wonokromo market (South Surabaya), Keputran market (Central Surabaya), Pacar Keling market (East Surabaya), and Manukan market (West Surabaya). 10 samples were taken from each market meaning that the total sample in this study is 50 samples. The sample was taken by swab surface of chicken meat using sterile cotton bud and is inserted into a tube containing 1% peptone water. It is then immediately brought to the laboratory using cool box containing dry ice inside.

ISOLATION AND IDENTIFICATION

Swab samples in the medium of 1% peptone water were removed to Brilliant Green Bile Broth (BGBB) (E. Merck, Darmstadt, Germany) and were incubated at 37°C for 24 hours. Positive results in the medium of BGBB were then grown on the medium of Eosin Methylene Blue Agar (EMBA) (E. Merck, Darmstadt, Germany) in streak manner and were incubated at 37°C for 18 – 24 hours. A typical colony of *Escherichia coli* on the media of EMBA is indicated in metallic green.

BACTERIA SENSITIVITY TEST ON ANTIBIOTICS

Testing of *Escherichia coli* resistant to disc antibiotics (OXOID, Basingstoke, United Kingdom), Ampicillin 10 µg (CT0003), Cefotaxime 30 µg (CT0166), Ceftazidime 30 µg (CT0412), Ceftriaxone 30 µg (CT0417), Cefazolin 30 µg (CT0011) and Tetracyclin 30 µg (CT0054), were carried out by disc diffusion method on the medium of Mueller Hinton Agar (MHA) (E. Merck, Darmstadt, Germany). Interpretation of the result was known through measurement of inhibitory zone diameter formed in accordance with the recommendation of the Clinical and Laboratory Standards Institute (CLSI, 2016).

IDENTIFICATION OF ESBL GENE WITH POLYMERASE CHAIN REACTION

The initial procedure in conducting PCR technique in this study was the DNA extraction. DNA extraction of *Escherichia coli* used boiling method. PCR amplification of the *bla*_{TEM} gene with 20 µL PCR reaction consisted of: 12.5 µL PCR Master Mix, 1 µL primary forward and 1 µL reverse primer, 5 µL DNA template and 0.5 µL nuclease free water. The mixture of PCR reagent was then added in the thermocycler. Primer used and the condition of PCR are presented in Table 1.

Table 1. Primer and thermal cycling condition that were used for amplification of *bla*_{TEM} gene

Target gene	Primer used	Thermal Cycling Condition
<i>bla</i> _{TEM}	F : 5' GTATCCGC TCATGGAGA CAATAACCCGTG-3'	95°C 15 min → 30x [95°C 1 min, 58°C 1 min, 72°C 1 min] → 72°C 10 min → 4°C ∞
	R : 5'-CCAATGCTT AATCAGTGGAGGCACC-3'	

RESULT

The isolation and identification result on 50 swab samples of broiler chicken meat obtained from 5 traditional market in

Surabaya shows that 31 samples (62%) indicates the occurrence of color change from translucent green to cloudy green in the medium of BGBB as well as the presence of gas in the Durham tube. A metallic green colony with a black colony in the central part as well as indole ring formation is present in the media of Sulfid Indol Motility (SIM) with the addition of Kovach reagent. A total of 31 positive samples of *Escherichia coli* from isolation and identification underwent sensitivity test on antibiotics of Ampicillin, Cefotaxime, Ceftriaxone, Ceftazidime, Cephazoline, and Tetracylin. The sensitivity test indicates 100% *E. coli* isolates are resistant to Ampicillin, 48.4% to Cephazoline, 13% to Ceftazidime, 9.6% to Cefotaxime, 6.4% to Ceftriaxone, and 87.2% to Tetracycline. The illustration of sensitivity test result on antibiotics is presented in Figure 1.

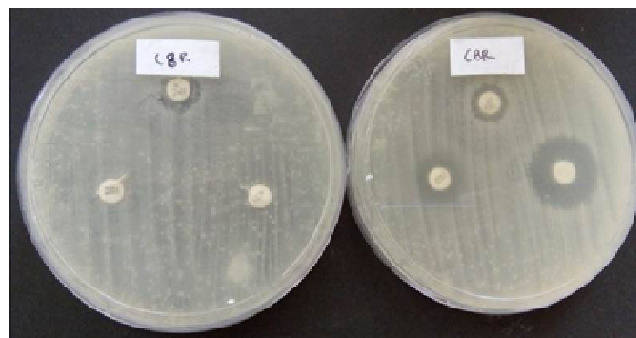


Figure 1. The illustration of sensitivity test on *Escherichia coli* isolates towards antibiotics.

Samples which are resistant to antibiotics in the sensitivity test were then undergone Polymerase Chain Reaction (PCR) in order to find the fragment of the encoding gene of Extended Spectrum Beta-lactamase (ESBL). 8 out of 8 *E. coli* resistant samples show the presence of DNA band from *bla*_{TEM} gene of 861bp. The electrophoresis result of PCR products can be seen in Figure 2.

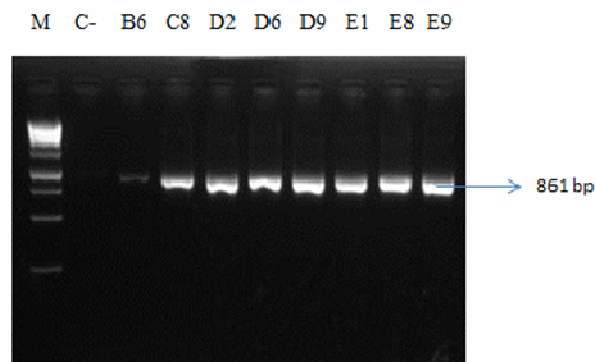


Figure 2. The electrophoresis result of PCR products indicates *bla*_{TEM} gene with band of 861bp

DISCUSSION

This study has successfully isolated *Escherichia coli* by 62% (31 out of 50) samples taken from swab surface of broiler chicken meat in 5 traditional markets in the area of Surabaya. This finding is similar to the study by Bhoomika et al. (2016) which detects *E. coli* in chicken meat in Chhattisgrah, India of 66.32%. The level of *E. coli* contamination in chicken meat reported by Odwar et al. (2014) is also considerably high at 78%.

Nevertheless, lower level of *E. coli* contamination is reported by Indana (2015) at 32.15%. High level of contamination of *E. coli* in chicken meat is a result of the surface contact with chicken carcass which is not water-resistant, chicken are placed mixed with other commodities, kiosk hygiene is not well-maintained, personal hygiene of the seller who does not wear gloves and apron, the presence of alive chicken in the place where chicken meat is sold, market hygiene and sanitary which remains poor due to the pile of garbage, the absence of adequate washing facilities, cutting board made of wood, and the absence of cold chain principle because the chicken meats are not stored at cold temperature (Mukti *et al.*, 2017).

In the bacterial sensitivity test on antibiotics using Kirby Bauer method, the level of resistance towards Ampicillin is significantly high of 100%, while the level of resistance on Cephalosporin group of antibiotics: Cephazoline (48.4%), Ceftazidime (13%), Cefotaxime (9.6%), Ceftriaxone (6.4%). It is also obtained high level of resistance on Non-Beta Lactam antibiotics: Tetracycline (87.2%). The result of molecular detection on 8 out of 8 *Escherichia coli* isolates using Polymerase Chain Reaction indicates the band resulting from primer amplification of *bla*_{TEM} gene of 861 bp. *bla*_{TEM} gene is one of the ESBL enzyme-encoding genes which indicates that genotypically, samples of chicken meat isolated from the traditional markets in Surabaya are *Escherichia coli*-producing ESBL reservoirs. It is in accordance with the study by Overdevest *et al.* (2011) stating that there is contamination of ESBL-producing *E. coli* on chicken meat of 76.8% with percentage of *bla*_{TEM} gene presence of 14%. Younis *et al.* (2017) also report that *bla*_{TEM} gene constitutes the main gene found in ESBL-producing *Escherichia coli* isolated from frozen chicken carcass of 37.5%. Study regarding ESBL contamination on chicken carcass by Reich *et al.* (2013) reports that of 88.6% of ESBL-producing isolates, 27% of which contains *bla*_{TEM}, and *Escherichia coli* is the most commonly found bacteria.

The presence of ESBL-producing bacteria in poultry-based food directly affects public health (Garcia-Graells *et al.*, 2012) because *E. coli* becomes a possible means in spreading resistant genes on animals and human beings. Such bacteria are known to be able to exchange resistant genetic material among strains (Costa *et al.*, 2013). Generally, resistant gene transfer can undergo through three mechanisms: transformation, conjugation, and transduction. The issue on antibiotic resistance comes largely from horizontal gene transfer between bacterial species. Such mechanisms are acknowledged to become more efficient for bacteria to adapt to environmental changes compared to random mutations. Transformation and conjugation (Marshall *et al.*, 2009) are the most commonly emerging transfer route.

The transfer of antibiotic-resistant genes from commensal bacteria to pathogenic bacteria relies on the density of the donor and the recipient bacteria, the availability of transfer mechanisms, nutrients, and selective pressure. Broiler chickens as one of the food-producing animals have the potential as a reservoir for ESBL-producing bacteria. The ESBL-producing bacteria can transmit from animal to human and potentially cause zoonotic diseases. ESBL-producing bacterial infections from consuming food-producing animal can lead to limited option in the treatment of patients. Such conditions extend the treatment period, increase the cost of treatment, increase the occurrence of the diseases, and death (Khosbayan *et al.*, 2013).

REFERENCES

- Bhoomika., Shakya, S., Patyal, A., Gade, N.E. 2016. Occurrence and characteristics of extended-spectrum β -lactamases producing *Escherichia coli* in foods of animal origin and human clinical samples in Chhattisgarh, India, *Veterinary World*, 9(9): 996-1000.
- Centers for Disease Control and Prevention (CDC). 2013. Antimicrobial Resistance Threats in The United States, 2013. <http://www.CDC.gov>.
- Clinical and Laboratory Standarts Institute. 2016. Performances Standards for Antimicrobial Susceptibility Testing. M100S 26th ed.
- Costa, P.M., Loreiro, L and Matos, A.J.F. 2013. Transfer of multidrug-resistance bacteria between intermingled ecological niches: the interface between humans, animals, and environment. *Int J Environ Res Publ Health*. 10:278-294.
- Garcia-Graells, C., N. Botteldoorn., K. Dierick. 2012. Microbial surveillance of ESBL *E. coli* in poultry meats, a possible vehicle for transfer of antimicrobial resistance to humans. *WIV-ISP*. 13:1-6.
- Indana, K. 2015. Pembuktian Gen Penyandi Resisten Antibiotik Ampicillin pada *Escherichia coli* yang Diisolasi dari beberapa Peternakan dan Pengepul Ayam di Surabaya [Thesis]. Fakultas Kedokteran Hewan. Universitas Airlangga. Surabaya.
- Khosbayan, T., Munguntsetseg, B., Ochbadrakh, B., Udval, U., Batbaatar, G., Wu, J and Yong D. 2013. Plasmid analysis of ESBL producing Gram negative bacilli in Mongolia. *Mongolian J Hea Sci*. 10(1):90-100.
- Marshall, B.M., D.J. Ochieng and S.B. Levy. 2009. Commensals: Underappreciated reservoir of antibiotic resistance. *Microbe*.4(5):231-238.
- Molbak, K. 2004. Spread of Resistant Bacteria and Resistance Genes from Animals to Humans-The Public Health Consequences. *Journal of Veterinary Medicine* 51(8-9) : 364-369.
- Mukti, A., Rastina., A. Harris., Ismail., Darniati and D. Masyitha. 2017. Resistensi *Escherichia coli* terhadap Antibiotik dari Daging Ayam Broiler di Pasar Rukoh. *Jimve*. 01(3) : 492-498.
- Nathisuwan, S., D. Burgess and J.S. Lewis. 2005. Extended-Spectrum β -lactamases : Epidemiology, Detection and Treatment. *Pharmacotherapy*. 21(8): 921-928.
- Norrung, B., J.K. Andersen and S. Buncic. 2009. Main Concerns of Pathogenic Microorganism in Meat. *Safety of Meat and Processed Meat* : 3-29.
- Odwar, J. A., Kikivi, G., Kariuki, J. N and Kariuki, S. 2014. A cross-sectional study on the microbiological quality and safety of raw chicken meats sold in Nairobi, Kenya. *BMC research notes*, 7(1), 627.
- Odwar, J.A. 2015. Contamination levels and transferability of antimicrobial resistance by *Escherichia coli* isolated from raw retail chicken meats in Nairobi, Kenya [Thesis]. Jomo Kenyatta University of Agriculture and Technology.
- Overdevest, I., I. Willemsen., M. Rijnsburger., A. Eustace., X. Li., P. Hawkey., M. Heck., P. Savelkoul., C. Vandenbroucke-Grauls., K. van der Zwaluw ., X. H. 2011. Extended Spectrum β -Lactamase Producing *Escherichia coli* in Poultry. *Journal of Antimicrobial Chemotherapy*. 67(12): 2822-2828.
- Reich, F., V. Atanassova., G. Klein. 2013. Extended-spectrum β -lactamase- and ampc-producing enterobacteria in healthy

- broiler chickens, germany. *Emerg Infect Dis.* 19(8):1253-1259.
- Rocha-Gracia, C.R., G. Cortés-Cortés., P. Lozano-Zarain., F. Bello., Y. Martínez-Laguna., C. Torres. 2014. Faecal *Escherichia coli* isolates from healthy dogs harbour CTX-M-15 and CMY-2 β -lactamases. *Vet J.* 203(3):315-319.
- Younis, G. A., Elkenany, R. M., Fouda, M. A and Mostafa, N. F. 2017. Virulence and extended-spectrum β -lactamase encoding genes in *Escherichia coli* recovered from chicken meat intended for hospitalized human consumption, *Veterinary World*, 10(10): 1281-1285.



SURAT KETERANGAN

Nomor : 2518 /UN3.1.6/KP/2022

Yang bertanda tangan di bawah ini :

Nama : **Prof. Dr. Mustofa Helmi Effendi, drh., DTAPH**
NIP : 196201151988031002
Pangkat / Golongan : Pembina (Gol. IV/a)
Jabatan : Wakil Dekan III

Dengan ini menerangkan bahwa :

Nama : **Dr. Jola Rahmahani, drh., M.Kes**
NIP : 195807131986012001
Pangkat/Golongan : Pembina (IV/a)
Jabatan : Lektor Kepala

Telah melaksanakan penelitian dengan judul sebagai berikut :

No	Judul Karya Ilmiah	Tahun pelaksanaan Penelitian
1.	Antimicrobial Resistance Profile of Escherichia Coli From Cloacal Swab of Domestic Chicken in Surabaya Traditional Market.	2019
2.	Antimicrobial Resistance Profile of Escherichia Coli Bacteria Collected From Cloaca Swab of Broiler Chicken at Surabaya Traditional Market, Indonesia.	2019
3.	Presence of multidrug resistance (MDR) and extended-spectrum beta-lactamase (ESBL) of Escherichia coli isolated from cloacal swab of broilers in several wet markets in Surabaya, Indonesia.	2019
4.	Public Awareness for Antimicrobial Resistance from Escherichia coli Isolated from Beef Sold on Several Wet Market in Surabaya, Indonesia	2019
5.	Detection Of Encoding Gene Extended Spectrum Beta Lactamase On Escherichia Coli Isolated From Broiler Chicken Meat In Traditional Market Surabaya	2019
6.	Knowledge, attitude, and practices associated with avian influenza among undergraduate university students of East Java Indonesia: A cross-sectional survey.	2021

Adapun penelitian tersebut tidak perlu di lakukan *Uji Etical Clearence* karena tidak menggunakan hewan coba.





UNIVERSITAS AIRLANGGA

FAKULTAS KEDOKTERAN HEWAN

Kampus C Mulyorejo Surabaya 60115 Telp. (031) 5992785, 5993016 Fax (031) 5993015

Laman: <http://www.fkh.unair.ac.id>, e-mail: info@fkh.unair.ac.id

Demikian surat keterangan ini kami buat untuk dapat dipergunakan sebagai persyaratan pengusulan Jabatan Fungsional **Guru Besar**.

Surabaya, 07 Juli 2022

Wakil Dekan III



[Handwritten Signature]
Prof. Dr. Mustofa Helmi Effendi, drh., DTAPH
NIP. 196201151988031002



ASEAN
University
Network

