

1st International Conference Postgraduate School (ICPSUAS 2017)

**Implementation of Climate Change
Agreement to Meet Sustainable
Development Goals**

Advances in Social Science, Education and
Humanities Research Volume 98

Surabaya, Indonesia
1 – 2 August 2017

Editors:

**Hj. Sri Iswati
Anwar Ma'ruf**

**Dina Sunyowati
Ignatius Nalarkusumamurti Sutirto**

ISBN: 978-1-5108-5690-5

Printed from e-media with permission by:

Curran Associates, Inc.
57 Morehouse Lane
Red Hook, NY 12571



Some format issues inherent in the e-media version may also appear in this print version.

Copyright© (2018) by Atlantis Press
All rights reserved.
<https://www.atlantis-press.com/proceedings/icpsuas-17>

Printed by Curran Associates, Inc. (2018)

For permission requests, please contact the publisher:

Atlantis Press
Amsterdam / Paris

Email: contact@atlantis-press.com

Additional copies of this publication are available from:

Curran Associates, Inc.
57 Morehouse Lane
Red Hook, NY 12571 USA
Phone: 845-758-0400
Fax: 845-758-2633
Email: curran@proceedings.com
Web: www.proceedings.com

Search

Series: [Advances in Social Science, Education and Humanities Research](#)

**Proceedings of the 1st International Conference
Postgraduate School Universitas Airlangga :
"Implementation of Climate Change Agreement to Meet
Sustainable Development Goals" (ICPSUAS 2017)**

ORGANIZERS

Steering Committee

Prof. Ir. Moch. Amin Alamsjah, M.Si., Ph.D.

Airlangga University, Indonesia

Prof. Dr. Hj. Sri Iswati, S.E., M.Si., Ak.

Airlangga University, Indonesia

Prof. H. Hery Purnobasuki, Drs., M.Si., PhD.

Airlangga University, Indonesia

Prof. Dr. Nyoman Tri Puspaningsih, M.Si.

Airlangga University, Indonesia

Prof. Dr. Nunuk Dyah Retno L., Drh., MS.

Airlangga University, Indonesia

Prof. Dr. H. Muslich Anshori, S.E., M.Sc., Ak., CA.

Airlangga University, Indonesia

Prof. Dr. Fendy Suhariadi, M.T., Psi.

Airlangga University, Indonesia

Organizing Committe

Prof. Hj. Romziah Sidik, Drh., Ph.D.

Airlangga University, Indonesia

Dr. Suparto Wijoyo

Airlangga University, Indonesia

Suryo Kuncorojakti, Drh., M.Vet.

Airlangga University, Indonesia

Hardany Primarizky, Drh., MVM.

Airlangga University, Indonesia

Asmaul Chusna

Airlangga University, Indonesia

Fira Nurafini, S.El.

Airlangga University, Indonesia

Scientific Committe

Herlambang Pradana, S.H., M.A., Ph.D.

Airlangga University, Indonesia

Dr. Prihartini Widiyanti, Drg., M.Kes.

Airlangga University, Indonesia

Prof. Dr. Sri Agus Sudjarwo, Drh., Ph.D.

Airlangga University, Indonesia

Iman Harymawan, S.E., MBA., Ph.D.

Airlangga University, Indonesia

Dr. Ferdiansyah, dr., Sp.OT.

Airlangga University, Indonesia

Prof. Myrtati Dyah Artaria, Dra., M.A., Ph.D.

Airlangga University, Indonesia

Dr. Dewi Retno Suminar, Dra., M.Si.

Airlangga University, Indonesia

Dr. Suryani Dyah Astuti, M.Si.

Airlangga University, Indonesia

Prof. Dr. Subagyo Adam, M.S.

Airlangga University, Indonesia

Prof. Dr. Hari Suprpto, Ir., M.Agr.

Airlangga University, Indonesia

Dr. Agung Dwi Wahyu Widodo, dr., M.Si.

Airlangga University, Indonesia

Dr. Sri Herianingrum, S.E., M.Si.

Airlangga University, Indonesia

Dr. Ahmad Yudianto, dr., SpF., M.Kes., S.H.

Airlangga University, Indonesia

Dr. Christijogo Sumartono, dr., Sp.An. (KAR)

Airlangga University, Indonesia

Dr. Sarwirini, S.H., M.S.

Airlangga University, Indonesia

Dr. Lilik Pudjiastuti, S.H., M.H.

Airlangga University, Indonesia

Dr. Windijarto, S.E., MBA.

Airlangga University, Indonesia

Tan Evan Tandiono, S.E., S.Pd.K.

Airlangga University, Indonesia

Dr. Nove Hidajati, Drh., M.Kes.

Airlangga University, Indonesia

Dr. Rimayanti, Drh., M.Kes.

Airlangga University, Indonesia

Ratna Damayanti, Drh., M.Kes.

Airlangga University, Indonesia

M. Gandul Atik Y., Drh., M.Kes.

Airlangga University, Indonesia

Kukuh Leksono, S.H., LL.M.

Airlangga University, Indonesia

Wilda Prihatiningtyas, S.H., M.H.

Airlangga University, Indonesia

Conference Editor

Prof. Dr. Hj. Sri Iswati, S.E., M.Si., Ak.

Airlangga University, Indonesia

Prof. Dr. Anwar Maâ€™ruf, drh., M.Kes.

Airlangga University, Indonesia

Dr. Dina Sunyowati, S.H., M.Hum.

Airlangga University, Indonesia

Ignatius Nalarkusumamurti Sutirto

Airlangga University, Indonesia

Atlantis Press

Atlantis Press is a professional publisher of scientific, technical and medical (STM) proceedings, journals and books. We offer world-class services, fast turnaround times and personalised communication. The proceedings and journals on our platform are Open Access and generate millions of downloads every month.

For more information, please contact us at: contact@atlantis-press.com

▶ PROCEEDINGS

▶ JOURNALS

▶ BOOKS

▶ PUBLISHING SERVICES

▶ ABOUT

▶ NEWS

▶ CONTACT

▶ SEARCH



[Home](#) [Privacy Policy](#) [Terms of use](#)



Copyright © 2006-2020 Atlantis Press

TABLE OF CONTENTS

SESSION: INDUSTRY, INNOVATION AND INFRASTRUCTURE

ANALYSIS OF FACTORS THAT INFLUENCE THE RISK OF OCCUPATIONAL ACCIDENTS IN TERMS OF BEHAVIORAL ASPECTS (STUDY ON AIRCRAFT PAINT REMOVAL WORKERS IN PT. X)	1
<i>Hesti Fiskalisa Purbayanti, Tri Martiana</i>	
EARLY STUDY THE POTENCY OF TURMERIC (CURCUMA DOMESTICA VAL.) AS IMMUNOSTIMULATOR FOR LAYERS CHICKENS AGAINST AVIAN INFLUENZA (AI) VACCINE	7
<i>Dyah Widhowati, Nurul Hidayah, Retina Yunani, Mijania Malia</i>	
THE USE OF CELL FREE FETAL DNA [CFF-DNA] AS NON-INVASIVE TECHNIQUES ON PATERNITY TEST [FORENSIC IDENTIFICATION]	10
<i>Ahmad Yudianto</i>	
LIBRARIAN : ANALYSIS FACTORS OF CAREER DEVELOPMENT	13
<i>Dimas Agung Trisliatanto, Koko Srimulyo, Helmy Prasetyo Yuwinanto, Mirza Dewi Suntari, Lastika Kusumawardhani</i>	
THE COMPETENCY DEVELOPMENT MODEL BASED ON PERFORMANCE	19
<i>Dimas Agung Trisliatanto, Fahih Suaedi, Fahmi Muhammad Az-Zuhri, Teguh Prasetyo, Rizka Pranatasari</i>	
IDENTIFICATION HUMAN AND ANIMAL BLOOD MIXTURES USING HUMAN CYTOCHROME B GENE	26
<i>Wimbuh Tri Widodo, Abdul Hadi Furqoni, Ahmad Yudianto, Sri Puji Astuti Wahyuningsih</i>	
ANATOMICAL PATHOLOGY AND RADIOLOGY APPEARANCE OF BALLISTIC WOUND RESULT OF CAL. 177 AIR RIFLE WITH 4,5 MM PELLETS ON EXTRIMITY OF THE DOG (CANIS LUPUS FAMILIARIS) AT DIFFERENT SHOOTING DISTANCES	29
<i>B. Putra, J. Rahmahani, E. Aksono, D. Legowo, B. Christoffel</i>	
JOB SATISFACTION AND JOB MOTIVATION TOWARD PERFORMANCE THROUGH ORGANIZATIONAL COMMITMENT	33
<i>Dimas Agung Trisliatanto, Tan Evan Tandiyono, Dimaz Ganjar Harry Pradana, Pristiandi Teguh Cahya, Nur Anilawati</i>	
QUALITY AND QUANTITY TEST OF DNA FROM SPERM IN WATER IMMERSION	39
<i>Abdul Hadi Furqoni, Wimbuh Tri Widodo, A. Yudianto</i>	
IMMUNOMODULATION EFFECT OF MENIRAN (PHYLLANTHUS NIRURI LINN) ON BLOOD PROFILE OF BROILER CHICKENS INFECTED WITH ENTEROTOXIN OF ANTIBIOTIC-RESISTANT ESCHERICHIA COLI	42
<i>Retno Sri Wahjuni, Emy Koestanti Sabdoningrum, Sri Hidanah, Diyantoro, R. Wahjuni</i>	

SESSION: OPENING

OBESITY IN PETS - ONE HEALTH AND ANIMAL WELFARE CONSIDERATIONS	45
<i>Shane Ryan</i>	
ENZOOTIC BOVINE LEUKOSIS: HOW TO PREVENT THE DISEASE AND CONTROL THE SPREAD OF BLV INFECTION.	50
<i>Takeshi Haga</i>	
CARBON ACCOUNTING REFLECTION AS A RESPONSE TO FACE THE CLIMATE CHANGE	52
<i>Sri Iswati</i>	
DEVELOPMENT OF LEGAL THEORY FOR ENVIRONMENT PROTECTION AND REMEDY FOR VICTIMS IN JAPAN	56
<i>Yuzuru Shimada</i>	
AN OVERVIEW OF THE SEAWEED CULTIVATION IN SEVERAL COUNTRIES: TECHNOLOGY AND CHALLENGE	62
<i>Mochammad Amin Alamsjah</i>	

SESSION: GENDER EQUALITY

COULD THE EXISTENCE OF MICROFINANCE INSTITUTION FOR ALLEVIATION POVERTY IN RURAL AREA? A CASE STUDY IN WOMEN'S COOPERATIVE IN MAGERSARI VILLAGE, PLUMPANG SUB-DISTRICT, EAST JAVA, INDONESIA	69
<i>Rustinsyah</i>	
WOMEN EMPOWERMENT TO SUPPORT FAMILIES ECONOMY IN SUKAMUKTI CIAMIS INDONESIA	76
<i>Nuning Kurniasih, Pawit M. Yusup, Engkus Kuswarno</i>	
THE INFLUENCE OF EMOTIONAL INTELLIGENCE TO THE PERFORMANCE OF FEMALE LECTURERS AT SEVERAL PRIVATE COLLEGES IN BALIKPAPAN	79
<i>Mardatillah</i>	

SESSION: RESPONSIBLE CONSUMPTION AND PRODUCTION

UTILIZATION OF DIGESTIBLE NUTRIENTS OF FEED RATIONS CONTAINING BLACK GLUTEN AND RED RICE BY MINI REX RABBIT	83
<i>S. Romziah , K. Emy, H Sri</i>	
PRODUCTION OF CARP IMMUNOGLOBULIN M EXPOSED WITH WHOLE PROTEIN FROM MYXOBOLUS KOI SPORE THROUGH FEED AS AN IMMUNOSTIMULANT	87
<i>Moch. Saad, Gunanti Mahasri, Woro Hastuti Satyantini</i>	
THE INFLUENCE OF THE DIFFERENT COMMERCIAL PROBIOTIC ON THE BIOFLOC NUTRITION	94
<i>Endang Dewi Masitah, Fitri Anisha Kurniawati, Azhar Muhammad Helmi</i>	

SESSION: GOOD HEALTH AND WELL-BEING

ANTIGENIC PROTEIN OF LEUCOCYTOZOON CAULLERYI SCHIZONT INDUCING CELLULAR IMMUNE RESPONSE: TLR-2 AND CD4 AS MARKER	98
<i>Nunuk Dyah Retno Lastuti, Endang Suprihati, Dony Chrismanto, Anwar Ma'Ruf</i>	
INFECTIOUS RESPIRATORY SUSPECT MALLEUS IN PONY HORSE AT SIDOARJO EAST JAVA INDONESIA	102
<i>Arya Pradana Wicaksono, Romziah Sidik</i>	
CONSUMER PROTECTION ON THE CIRCULATION OF COSMETIC ONLINE	104
<i>Lilik Pudjiastuti, Emanuel Sujatmoko, Indrawati</i>	
THE TRADITIONAL WAY IN PREVENTING AND OVERCOMING HEALTH PROBLEMS AMONG SULFUR MINERS IN THE CRATERS OF IJEN	109
<i>Wisnu Setiadji, Myrtati D. Artaria</i>	
SELF INDEPENDENCE OF FAMILY PLANNING IN URBAN AREA GRESIK DISTRICT	114
<i>Yuly Sulistyorini, Nunik Puspitasari, Diah Indriani, Rachmah Indawati</i>	
ANALYSIS OF THE EFFECT OF INDIVIDUAL, FAMILIAL AND ENVIRONMENTAL FACTORS ON FAMILY STIGMA OF LEPROSY IN JOMBANG REGENCY, EAST JAVA INDONESIA	118
<i>Nasrudin , Tjipto Suwandi, Cholichul Hadi, A. Yusuf, R. Hargono</i>	
THE FREQUENCY OF Y-PATTERN DENTAL TRAITS ON LOWER MOLAR OF JAVANESE DEUTROMALAYID	123
<i>Aprian A. Prastya, Myrtati D. Artaria</i>	
ANTIDIABETIC EFFECT ON TEA OF PLUCHEA INDICA LESS AS FUNCTIONAL BEVERAGE IN DIABETIC PATIENTS	126
<i>Yesiana Dwi Wahyu Werdani, Paini Sri Widyawati</i>	
DESIGN OF A WIRELESS TELEMETRIC SENSOR SYSTEM FOR MONITORING THE DEVELOPMENT AND TREATMENT OF CHRONIC DIABETIC FOOT INJURIES	130
<i>Suryani Dyah Astuti, Tri A. Prijo, Wirda A. Ridyananda, I. Suhariningsih</i>	
ACTIVATION OF FAK EXPRESSION IN INFLUENCING BONE DENSITY BY EXERCISE TRAINING FOR DECREASIS OSTEOPOROTIC RISK	133
<i>Nurul Mahmudati, Hawin Nurdiana</i>	
ANTIMICROBIAL USAGE SURVEILLANCE OF CATTLE IN INDONESIA TO ADDRESS ANTIMICROBIAL RESISTANCE	136
<i>Havan Yusuf, Syafrison Idris, Mathilde Paul, Theera Rukkwamsuk</i>	

EFFECTS OF HEAT EXPOSURE DURATION ON SALIVA TRACES ON CIGARETTE BUTTS AS FORENSIC IDENTIFICATION TOOLS	141
<i>Mely Purnadianti, Andika Aliviameita, Diah Ayu Nur Rochmawati, Dian Amanovitasari</i>	
THE USAGE OF VISUM ET REPERTUM (VER) AS A SCIENTIFIC EVIDENCE IN ANIMAL ABUSE ACCORDING TO THE PERSPECTIVE OF THE PENAL CODE (KUHP) AND THE LAW OF CRIMINAL PROCEDURE CODE (KUHAP) IN INDONESIA	144
<i>A. Bilqishti, N. Ignatius, H. Pudji, Haniyah, Sadjijono</i>	
POLICY INSTRUMENTS ON REPRODUCTIVE HEALTH AS REALIZATION OF CIVIL RIGHTS IN GENDER EQUALITY AND JUSTICE	148
<i>Lina Hastuti, Lilik Pudjiastuti, Sukardi</i>	
MODEL OF ADOLESCENT REPRODUCTIVE HEALTH INFORMATION DISSEMINATION IN BANDUNG WEST JAVA INDONESIA	153
<i>Nuning Kurniasih</i>	
RELATION EFFECT OF VARIATION TIME STORAGE YAM TUBER (PACHYRRHIZUS) TO CHOLESTEROL RATTUSNORVEGICUS	157
<i>Anggi Khairina Hanum Hasibuan, Wa Ode Diana, Yosephin Anis Widiyanti</i>	
PROTEIN SIGNAL TRANSDUCERS AND ACTIVATORS TRANSCRIPTION (STAT) AS GROWTH PROMOTER	162
<i>Anwar Ma'Ruf, Ngakan Made Rw, M. Sukmanadi, Ratna Damayanti</i>	
POTENTIAL PROTEIN GHRELIN ORIGIN OF PLANT AS ENERGY BALANCE SETTINGS FOR FEED EFFICIENCY	166
<i>Nove Hidayati, Chairul Anwar, Ratna Damayanti</i>	
ANTIOXIDANT ACTIVITY ASSAY OF ALPHA-MANGOSTIN FOR AMELIORATION OF KIDNEY STRUCTURE AND FUNCTION IN DIABETIC MICE	170
<i>Saikhu Akhmad Husen, Firas Khaleyla, Arif Nur Muhammad Ansori, Raden Joko Kuncoroningrat Susilo, Dwi Winarni, Salamun</i>	
RISK ANALYSIS OF OCCUPATIONAL DISEASES IN HARBOR COMMUNITY	175
<i>Martiana Tri, N. Widajati</i>	
THE VASCULAR DISTRIBUTION USING COLOR DOPPLER SONOGRAPHY IN AXILLARY NODES OF BREAST CANCER TO ASSES METASTASIS	179
<i>Lailatul Muqmiroh, Lies Mardiyana, Heru Purwanto, Sri Agustiniingsih</i>	
PHOTODYNAMIC INACTIVATION FOR PHATOGENIC BACTERIA: ADDING CHLOROPHYLL AND OXYGEN	185
<i>Basitha Febrinda Hidayatulail, Moh. Yasin, Suryani Dyah Astuti</i>	
THE EFFECT OF DAYAK ONION (ELEUTHERINE PALMIFOLIA) TUBER EXTRACT IN LIVER MALONDIALDEHYDE (MDA) LEVEL IN MALE WISTAR RATS INDUCED BY ALLOXAN	189
<i>Risqia Damayanti, Anwar Ma'Ruf</i>	
FISH PROTEIN PROFILE SUBMERGE ALUM SOLUTIONBASED ON SDS-PAGE	192
<i>Akhmad Mubarak, S. Darmawati, T. Endang</i>	
EFFECTIVENESS TEST OF AKAR KUCING PLANT EXTRACT (ACALYPHA INDICA LINN) TO LOWER TOTAL CHOLESTEROL LEVELS IN RATS (RATTUS NOVERGICUS) WHICH INDUCED HYPERCHOLESTEROLEMIA DIET	195
<i>Retno Sri Wahyuni, Fitria Agung Nugrahaningtyas, Nove Hidayati, Rochmah Kurnijasanti</i>	

SESSION: DECENT WORK AND ECONOMIC GROWTH

INDICATOR OF ZAKAT OVER MUZAKKI AN EXPLANATORY STUDY ON BAZNAS OF CENTRAL JAVA PROVINCE	198
<i>Suraji, Sri Iswati</i>	
KAILI WOMEN'S EMPOWERMENT IN INDONESIA	202
<i>Indah Ahdiah, B. Suyanto, I. Wirawan</i>	
THE ROLE OF MUHAMMADIYAH IN THE DEVELOPMENT OF SOCIAL CAPITAL COMMUNITY	206
<i>Sri Iswati, Sri Herianingrum, Muslich Anshori, H. Effendie, Tika Widiastuti, Ririn Tri Ratnasari</i>	
ROLE OF SOCIAL EUNTERPRENEURSHIP ON POVERTY REDUCTION AND ECONOMIC GROWTH IN INDONESIA	211
<i>Risma Ayu Kinanti, Sri Iswati, Tjiptohadi Sawarjuwono, Ririn Tri Ratnasari</i>	
WAQF PRODUCTIVE EFFICIENCY: EVIDENCE FROM YAYASAN BADAN WAKAF SULTAN AGUNG, SEMARANG	217
<i>Tika Widiastuti, Wahyuningsih</i>	

EFFECT OF THE FINANCING OF SHARIA BANK ON THE INFLATION IN INDONESIA	225
<i>Anas Alhifni, Rully Trihantana Rully, Maya Apriyana</i>	
EMPOWERING COMMUNITY INFORMATION GROUP: STRATEGIC COMMUNICATION PLAN IN COMMUNICATION AND INFORMATICS OFFICE OF MALANG CITY	230
<i>Dani Maroe Beni</i>	
EVALUATION OF INVESTMENT POLICY IN THE FORM OF TAX HOLIDAY IN ORDER TO INCREASE INDONESIAN ECONOMIC GROWTH	240
<i>Resha Dwiayu Pangesti Mulyono, Elia Mustikasari</i>	
THE EXTERNAL AND INTERNAL FACTORS ON MICRO, SMALL AND MEDIUM ENTERPRISE (SME) FINANCING IN ISLAMIC BANK	244
<i>Fira Nurafini, Raditya Sukmana, Sri Herianingrum</i>	
ANALYSIS OF THE ROLE SHARIA FINANCING AND CHARACTERISTICS OF BUSINESS INSTITUTIONS TO MICRO, SMALL AND MEDIUM ENTERPRISE (MSMES) DEVELOPMENT IN SOLOK CITY OF WEST SUMATERA	249
<i>Neng Kamarni, Muslich Anshori</i>	
THE LINKAGE BETWEEN ECONOMIC GROWTH AND DEFORESTATION IN OIC (THE ORGANIZATION OF ISLAMIC COOPERATION) COUNTRIES	253
<i>Rani Puspitaningrum, Raditya Sukmana, Imron Mawardi</i>	
EMPLOYEES' COMMITMENT BUILDING THROUGH SOCIAL ESTEEM AT THE REMUNERATION'S INCREASEMENT OF RECOGNITION AN SELF-ACTUALIZATION NEED IN MASLOW THEORY	259
<i>Djoko Soelistya</i>	
THE DYNAMIC ANALYSIS ON IMPACTS OF EDUCATION AGAINST POVERTY REDUCTION	262
<i>Sri Herianingrum, Sri Iswati, Muslich Anshori</i>	
THIRD PARTY FUNDS, NUMBER OF CAPITAL, AND NON PERFORMING FINANCING TO THE NUMBER OF MUDHARABAH FINANCING IN INDONESIA'S SHARIA BANKING	266
<i>Muhammad Iqbal Surya Pratiko, Ririn Tri Ratnasari</i>	
ISLAMIC WORK ETHIC AND SATISFACTION WITH INTRINSIC MOTIVATION AS MEDIATOR VARIABLE	272
<i>Rio Eriawan Putra Tohari, Ririn Tri Ratnasari</i>	
BUILDING SOFT SKILLS AS THE PEOPLE-JOB FIT TO OVERCOME COUNTERPRODUCTIVE WORK BEHAVIOR IN CREDIT ASSESSMENT BANKING SECTOR: A LITERATURE REVIEW	276
<i>Dewi Khrisna Sawitri</i>	
 <u>SESSION: CLEAN WATER AND SANITATION</u>	
THE MANAGEMENT MODEL ON INTEGRATED SETTLEMENT WASTEWATER TREATMENT SYSTEM (SPAL) IN SUPPORTING HEALTH DEVELOPMENT	281
<i>Lilik Pudjiastuti</i>	
WATER TRADE IN ISLAMIC BUSINESS ETHICS PERSPECTIVE: EVIDENCE FROM INDONESIA	285
<i>Bahrina Almas, Tjiptohadi Sawarjuwono, Sri Iswati</i>	
 <u>SESSION: ZERO HUNGER</u>	
OPTIMIZATION OF FOOD ESTATE PROGRAM THROUGH CASH WAQF TO ACHIEVE FOOD SOVEREIGNTY OF INDONESIA	290
<i>Denizar Abdurrahman Miraj, Ummi Muthia Fathy, Muhammad Nafik Hadi Ryandono, Tjiptohadi Sawarjuwono</i>	
 <u>SESSION: CLIMATE ACTION</u>	
BLUE CARBON: ROLE OF SEA TO THE BALANCE OF CLIMATE WITHIN THE MITIGATION FRAME OF CLIMATE CHANGE	294
<i>Sunyowati Dina, Ria Tri Vinata</i>	

LOCAL CONCERN ON PLASTIC BAG CHARGE IN INDONESIA: DO WE REALLY CARE?	298
<i>Nuzulul Kusuma Putri</i>	
MAKING MODEL OF VILLAGE REGULATION BASED ON GOOD VILLAGE GOVERNANCE IN INDONESIA	302
<i>Suparto Wijoyo, Radian Salman, Bagus Oktafian Abrianto</i>	
STRIP INTERCROPPING PRODUCTIVITY OF MODERN MAIZE HYBRID VARIETIES WITH PULSE CROPS ON A DRYLAND	309
<i>I Komang Damar Jaya, Sudirman, Rosmilawati</i>	
ANISAKIDAE AS A BIOINDICATOR CANDIDATE IN RESPONSE OF ENVIRONMENTAL DAMAGE	313
<i>Hartanto M. Raharjo, Setiawan Koesdarto, Qabilah C. K. N. Sumarsono, Febrina D. Permatasari, Zafitri N. Wastomi, Nurul S. A. Sari</i>	
ANALYSIS OF THE DISCLOSURE OF GREENHOUSE GAS EMISSIONS AND ENVIRONMENTAL PERFORMANCE IN LISTED FIRMS AT JAKARTA ISLAMIC INDEX (JII)	316
<i>Dwi Swasana Ramadhan, Azizah Anshori, Sri Iswati, Sri Herianingrum</i>	
MARINE ENVIRONMENT AND CLIMATE CHANGE : LEGAL ASPECTS OF PROTECTION AND PREVENTION AGAINST CORAL REEFS DEGRADATION IN INDONESIA	321
<i>Dina Sunyowati, Annisa Firdhausy</i>	

SESSION: ZERO POVERTY

ISLAMIC CONCEPTS AS EFFORT TO UTILIZE WASTELAND OF PUBLIC REVENUE DISTRIBUTION	325
<i>Ridan Muhtadi, Sri Iswati, A. Rohman</i>	
INFLUENCE OF INFLATION ON POVERTY IN SURABAYA AND ISLAMIC SOLUTIONS IN ERADICATING POVERTY	331
<i>Amaliah Al Azmi, S. Iswati, R. Sukmana, R. Ratnasari</i>	
ECONOMIC DEVELOPMENT IN INDONESIA: INTEGRATED MODEL OF ISLAMIC FINANCIAL INCLUSION	335
<i>Laila Masruro Pimada, N. Firdaus</i>	
POVERTY ALLEVIATION: AN ECONOMIC PRACTICE STUDY OF ISLAM IN CULTURE	341
<i>Renny Oktafia, M. Anshori, I. Mawardi</i>	
DETERMINANTS OF SUCCESS IN VENTURE CAPITAL ASSISTANCE RECIPIENTS IN YAYASAN DANA SOSIAL AL-FALAH (YDSF) SURABAYA	345
<i>Doddy Koesnadhi, Tika Widiastuti, Sri Herianingrum</i>	
OPTIMIZING FUND MANAGEMENT OF MOSQUE CASH FOR ECONOMIC EMPOWERMENT OF PEOPLE	350
<i>Sri Wulandari, T. Sawarjuwow, S. Iswati</i>	
ENHANCING FARMER'S INDEPENDENCE BY BAITUL MAAL WAT TAMWIL CONCEPT	355
<i>Vina Septiana Permatasari, T. Sawarjuwono, S. Iswati</i>	
THE MOVING OUT OF POVERTY OF MUSTAHIQ PRODUCTIVE ZAKAT IN INDONESIA	359
<i>Imron Mawardi, Tika Widiastuti, Puji Sukmaningrum</i>	
ISLAMIC FINANCIAL DEVELOPMENT AS EFFORTS TO ACCELERATE ECONOMIC DEVELOPMENT AND POVERTY ALLEVIATION	365
<i>Elsi Mersilia Hanesti, Sri Herianingrum, Raditya Sukmana</i>	
HADD AL- KIFAYAH (SUBSISTENCE CRITERIA) AS A MEASUREMENT OF ISLAMIC SOCIO-ECONOMIC SECURITY	372
<i>Imron Mawardi, Sri Herianingrum, T. Widiastuti</i>	

Author Index

Antigenic Protein of *Leucocytozoon caulleryi* schizont Inducing Cellular Immune Response: TLR-2 and CD4 as Marker

Nunuk Dyah Retno Lastuti^{1(a)}

Endang Suprihati¹⁾

¹⁾Department of Parasitology, Faculty of Veterinary Medicine
Universitas Airlangga, Surabaya

^{a)} Corresponding Author: nunuk_dyah@yahoo.com

Dony Chrismanto²⁾

²⁾Study Program of Animal Health, Faculty of Vocation
Universitas Airlangga, Surabaya

Anwar Ma'ruf³⁾

³⁾Department of Basic Medical Science
Universitas Airlangga, Surabaya

Abstract: Leucocytozoonosis is caused by *Leucocytozoon caulleryi* and is responsible for death in chickens by bleeding. Leucocytozoonosis is an endemic disease in Indonesia and incidences have been reported in several regions in East and Central Java. The financial losses caused by this disease include growth disorders in chick, decreased egg production, higher mortality rate and also a higher production cost. This research aims to detect TLR-2 and CD4 expression as a cellular immune response in rabbits immunised by the protein of *L.caulleryi* schizont. It is needed as a preliminary research study for molecular vaccine development which is considerably effective when it comes to preventing leucocytozoonosis occurrence in Indonesia. This research study was performed in several stages i.e. **the** isolation of *L.caulleryi* schizont from a chicken liver infected with leucocytozoonosis to be based on the clinical signs observed, microscopic examination, and the pathological changes in the other chicken organs. The purification of the soluble protein of *L.caulleryi* schizont including the immunisation of the rabbits. Each of the experimental rabbits was injected with 500 µg of *L.caulleryi* schizont protein and added adjuvant complete with a ratio of 1:1. Every two weeks the injection was performed with the same protein with a dosage of 500 µg each and an added adjuvant that was incomplete (the booster was performed 5 times in 2 weeks). The examination of the cellular immune response of CD4 and TLR-2 expression in the rabbits' T cells using an immunocytochemistry method visualised by fluorescein isothiocyanate. The examination of the results was done by immunocytochemistry showing TLR-2 and CD4 expression as yellow to green fluorescent colour, mainly in the 5th booster where the activation of the CD4 co-receptor and TLR-2 occurred. The conclusion shows that the antigenic protein of *L.caulleryi* schizont has the ability to induce a cellular immune response through the co-receptors CD4 and TLR-2 in the rabbits' T cells as the preliminary

research in the sub-unit vaccine development for leucocytozoonosis in chickens.

KEY WORD: *antigenic protein, Leucocytozoon caulleryi, schizont, TLR-2, CD4.*

I. INTRODUCTION

Leucocytozoonosis is one of the diseases caused by *Leucocytozoon caulleryi* in poultry, which is transmitted by flies *Culicoides* sp. or *Simulium* sp. Leucocytozoonosis is an endemic disease in Indonesia and incidences have been reported in several regions in East and Central Java. *Leucocytozoon* parasites infect a large number of avian hosts, including the domestic chicken, and causes a significant economical loss to the poultry industry (1). The financial losses impacted by this disease include growth disorders in chicks, decreased egg production, higher mortality rate and also a higher production cost (2, 3, 4, 6). The occurrence of leucocytozoonosis in broiler is between 7-40%, while the mortality rate in chicks is about 7-50% and in layer is about 2-60% respectively (7). The clinical signs observed in chickens are green faeces, depression, a loss of appetite, vomiting blood, paralysis and death due to bleeding (8). In order to overcome leucocytozoonosis in chickens, farmers have carried out the dispensing of medications, eradicating flies using insecticides, and improving the water irrigation in the area around the henhouse, but the latter method is less efficient due to the rapid growth of flies. Based on the vaccine developed by Onaga *et al* (1999), chickens can be protected from *L.caulleryi* infection by giving them a second generation schizont extract and blood serum containing an antigen (5). The weakness of this live vaccine administration is due to the possibility of infection because the parasites may become pathogens when the host's condition is weakened. Molecular vaccine development is considerably more effective when it comes to preventing leucocytozoonosis occurrence in

Indonesia. Based on the phylogenetic analysis of Cytochrome B *Leucocytozoon* spp in broilers, it was shown that the *L.caulleryi* from various endemic regions is highly homologous (>95%) (6). Referring to the problems above, a preliminary research about the rabbits' immune response induced by *L. caulleryi* schizont protein with TLR-2 and CD4 as marker to explore the cellular immune response is necessary.

TLR is a membrane protein that helps receptor recognition patterns in response to various molecule derivatives from microbes and stimulated innate immunity due to microbe molecule exposure. TLR is known to be a recognition receptor which is involved in pathogen-associated molecular patterns (PAMP) recognised by pattern recognition molecules (PRMs). A phagocytes development system in recognising pathogens can be stimulated any time to respond as an inflammatory system. TLR stimulation through microbial product initiates the signalling pathways which activate not only the innate immunity but also adaptive immunity (9, 10). CD4+T cells play a central role in immune protection and the B cells to produce antibodies, to induce the macrophages to develop enhanced microbicidal activity, to recruit neutrophils, eosinophils, and basophils to the sites of infection and inflammation, and through their production of cytokines and chemokines (11). As a vaccine kit candidate, it is required to know whether or not the *L.caulleryi* protein can induce either humoral or cellular immune response, because then a favourable immune response and immunogenic protein can be explored. Immunogenic protein has main characteristics such as a heavy molecule weight, homogeneity and a complex chemical structure and alienation (13, 15). It is necessary to study whether the results of the immunogenic proteins from a liver containing *L. caulleryi* can be developed for use in a vaccine in the effort to overcome Leucocytozoonosis, for example, with a vaccination program for chickens with a vaccine sub-unit that is safe in its use.

II. METHODS

A. Isolation and identification of *L.caulleryi* schizont

Schizont *L.caulleryi* isolated from chicken liver infected by leucocytozoonosis is based on the clinical signs observed, microscopic examination and the pathological changes of other chicken organs. Microscopic examination was performed to detect any gametosit stadium developed in eritrosit. Then, further assesment was done on several other organs such as the liver, spleen and intestine to detect the schizont stadium by crushing the organ and a pathological examination. The chicken liver and spleen containing schizont *L.caulleryi* was isolated in 50-100 mg or 0.05 ml cultured wet pellets, with a 2-3 ml 2-Drehydration solution/sample buffer added. Next, the sample was put on ice, sonicated for 30 seconds and cooled down to -80°C for 5 minutes. This treatment was repeated four times. The sample was centrifuged using a microcentrifuge (16.000 x g) for 20-30

minutes at 18-20 °C, and was then taken out from the centrifuge, Supernatan was put into a clean tube and the sample was stored at -80°C.

B. Immunization of rabbits

This research used five rabbits treated as per the animal welfare concept. They were given a health examination based on both clinical symptoms and laboratory tests. All of the animals were handled in strict accordance with Ethical Clearance and the experiment was approved by the Ethical Committee of the Faculty of Veterinary Medicine, of the Universitas Airlangga, No: 630-KE. Four-month old naïve rabbits were prepared for the immunisation trial at the laboratory of experimental animals, in the Faculty of Veterinary Medicine at the Universitas Airlangga. Each of the experimental rabbits were injected with 500 µg *L.caulleryi* schizont protein (0.3 ml) with an added Freund adjuvant complete (Sigma, USA) with a ratio of 1:1. The injection was performed every two weeks with the same protein with a dosage of 500 µg each and with the added adjuvant incomplete (Sigma, USA). The immunisation (booster) was performed 5 times in 2 weeks. Prior to the first injection, about 10 ml of rabbit blood was taken for TLR-2 and CD4 examination as preliminary data (control) and whole blood examination was conducted at the end of the first booster until the fifth booster (13, 15).

C. Examination of TLR 2 and CD4 expression using Immunocytochemistry

The principle of immunocytochemistry examination is that it is an immunology technique used to visualise specific proteins or antigens in the cells using the first antibody (www.abcam.com/index html). Several stages of the examination will be explained: 1) the blood sample is washed using 10% PBS-T20 five times, and the sample is fixated with 100% methanol (10 minutes) or with paraformaldehyde in PBS pH 7,4 for 15 minutes at room temperature, 2) the sample is washed twice using cold PBS, the sample is incubated for 10 minutes in PBS consisting of 0.1% Triton X-100 or 100 mM digitonin, and then the cells are washed in PBS three times for 5 minutes, 3) the cells are incubated with 1% BSA in PBS-T20 for 30 minutes, and incubated in conjugated antibody TLR 2-FITC labelled (Abcam's RabMab, USA) and CD4-FITC labeled (Abcam's RabMab, USA) and diluted in 1% BSA in PBS-T20 at room temperature for an hour or at night at a temperature of 4°C, 4) the cells are washed three times in PBS (5 minutes for each washing). The results were examined by using a fluorescent microscope using a magnification of 200 times, to find out whether the yellow to green fluorescent colour from the T cells expresses TLR-2 and CD4.

III. RESULTS AND DISCUSSION

The cellular immune response was shown by the expression of TLR-2 and CD4 in the rabbit T cells marked by the yellow to green fluorescent colour after the rabbit immunisation (Figure 1 and Figure 2).

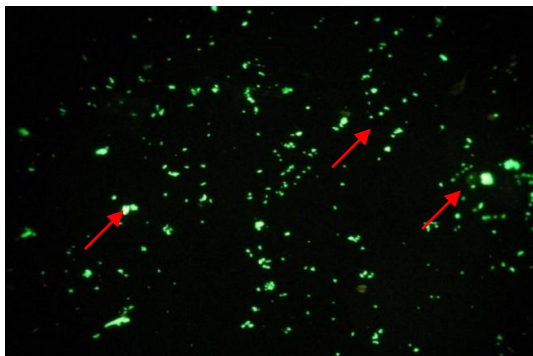


Figure 1. TLR2 expression in rabbit T cells visualized by Fluorescein Isothiocyanate (FITC) (200x magnification).

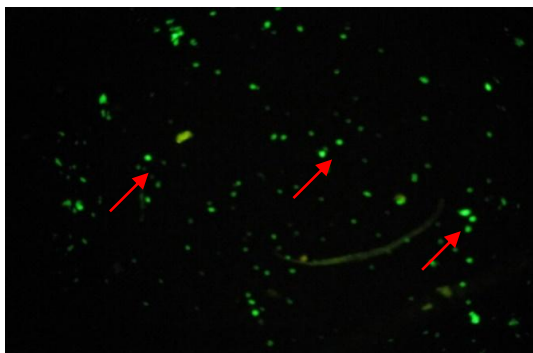


Figure 2. CD4 expression in rabbit T cells visualized by Fluorescein Isothiocyanate (FITC) (200x magnification).

It has been known that the toll-like receptor (TLR) is a receptor that can recognise the ligand from microbes or parasites which are involved in innate immunity. Along with new developments, TLR not only plays a role in innate immunity but also in adaptive immunity (12, 13). The examination results from the immunocytochemistry shows that there is a yellow to green fluorescent colour visualised by fluorescein isothiocyanate (FITC). It shows that the stadium schizont *L.caulleryi* protein has a ligand that is recognised by TLR 2 as a form of signal transduction which activates and induces a cellular immune response such as the lymphocyte T of the rabbits after immunisation. In accordance with the principles of the immunisation method, which is an increasing degree of immunity, it provides protective immunity by inducing a memory response towards a specific pathogen with a non-virulent or non-toxic antigen (14).

According the results of the research, it is shown that the antibody TLR-2 can recognise the ligand from the protein antigen *L.caulleryi* schizont by stimulating T cell activation, marked by the presence of yellow to green fluorescent colour which increased in accordance with the treatment from the various boosters. When the antigen of *L.caulleryi* schizont enters the body, it will be caught by macrophage or dendritic cells and the phagocytes cells will be activated by TLR as a signal transducer. *L.caulleryi* schizont possess a ligand or pathogen-associated molecular pattern (PAMP) which is recognised by TLR-2. Ligands that are recognised by TLR-2 consist of lipoprotein/lipopolyptide, flagelin, ssRNA and CpG DNA. The schizont of *L.caulleryi* is an intracellular microorganism which contains antigens. When the antigen enters the body, it will be caught by a macrophage and the phagocytes cells will be activated by the TLR as a signalling pathway. The signal produced by TLR will activate the transcription factor NFκB which stimulates cytokine production (10, 16). NFκB activation is initiated by a signal which recruits MyD88 and interacts with the IL-1 receptor associated kinase (IRAK). Autophosphorylation then occurs, separating MyD88 and activating the TNF receptor associated factor 6 (TRAF-6) to activate the IκB kinase (IKK). Activated IKK will activate NFκB to transcript gene IL-12, IL-10, IL-4, TNF-α, IFN-γ. IL-2 roles will increase the cytolytic activity from the cytolytic T lymphocytes. This will also promote Th1 cells development together with CD8 activation in order to produce IL-2 which stimulates the proliferation and differentiation of B cells that will produce antibodies. IL-4 is a cytokine which is produced by subset Th2 from Th cells CD4 that function to induce Th2 cells differentiation and stimulate IgE production. (17, 18).

The main function of CD4 is acting as a transduction signal in antigen recognition and to strengthen the bond between T cells and antigen-presenting cells (APC). APC produces IFN-γ and IL-12 that stimulate the differentiation of CD4+ cells into Th1 which plays a major role in delayed hypersensitivity reactions. CD4+ T-cells produce a protein named IL-4 cytokine which helps B lymphocytes in antibody production and phagocytosis to destroy ingested microbes (11, 17). CD4 molecules as a co-receptor are a surface cell molecule which are expressed by various types of cells in the immune system which were formed by cluster differentiation. The accessory molecule is used as a marker of Th cell activation with B cells and cytotoxic T cells maturation, which is responsible in regulating chronic inflammatory reactions towards antigens through macrophage stimulation. Lymphocytes B activation is marked by a significant increase ($p < 0,05$) in the antibody titer of rabbits injected with the protein of *L.caulleryi* schizont (15, 19). As a vaccine kit candidate, the schizont *L.caulleryi* antigen injected in to rabbits needs to induce a cellular immune response, marked by T cell lymphocyte activation which expresses TLR 2 in accordance with humoral immune response. There was an antibody (IgG) titre enhancement produced by B lymphocytes (14, 15).

Conclusion

The antigenic protein of *L.caulleryi* schizont has the ability to induce a cellular immune response through the expression of TLR-2 and CD4 in the rabbits' T cells. The TLR-2 signal plays a role in innate immunity, but also in adaptive immunity. The antigenic protein of *L.caulleryi* schizont may contain ligand which acts as a receptor that is involved in pathogen-associated molecular patterns (PAMP). This study is a preliminary research to explore the immunogenic protein which plays a role in immune system activation for future studies in vaccine development to overcome leucocytozoonosis in chickens.

Acknowledgment

We would like to thank the Ministry of Research, Technology and Higher Education in Indonesia. This study was supported by research grant 2015. We would also like to thank the Rector of Universitas Airlangga and the Director of Research and Innovation Department, of Universitas Airlangga.

References

1. Abbas, A.K., Litchman, A.H. Cellular and Molecular Immunology. 5th. Ed. International Edition. Elsevier Saunders Inc. Philadelphia, Pennsylvania, 41-105, 411-432 (2005).
2. Gotanda T, Doi M, Eiguchi Y, Tanaka Y, Kobayashi S and Fujisaki Y, 2002. Characterization of Monoclonal Antibodies against the second generation schizonts of *Leucocytozoon caulleryi*. *J Vet Med Sci*. 64(3):281-283.
3. Imura T, Sato S, Sato Y, Sakamoto D, Isobe T, Murata K, Holder AA, Yukawa M. The apicoplast genome of *Leucocytozoon caulleryi*, a pathogenic apicomplexan parasite of the chicken. *Parasitol Res* 113:823-828, 2014.
4. Ito A, Gotanda T. The correlation of protective effects and antibody production in immunized chickens with recombinant R7 vaccine against *Leucocytozoon caulleryi*. *J Vet Med Sci* 64(5):405-411, 2002.
5. Lastuti, N.D.: Specific antigenic protein 57.3 kDa of *Sarcoptes scabiei* var. *caprae* as material candidate of scabies diagnostic kit for goat and Toll-like receptor mediated Immune Responses. Doctoral diss. Postgraduate Program. Universitas Airlangga (2009).
6. Lee HR, Koo BS, Jeon EO, Han MS, Min KC, Lee SB, Bae Y, Mo IP. Pathology and molecular characterization of recent *Leucocytozoon caulleryi* cases in layer flocks. *J Biomed Res*, 30(6): 517-524, 2016.
7. Lastuti N.D, Suprihati E, Chrismanto D. Exploration of antigenic protein of *Leucocytozoon caulleryi* as diagnostic kit leucocytozoonosis on broiler chickens. *Media Kedokteran Hewan* 29 (3): 213-222 (2013).
8. [Majewska M, Szczepanik M](#). The role of Toll-like receptors (TLR) in innate and adaptive immune responses and their function in immune response regulation. [Postepy Hig Med Dosw \(Online\)](#). 60:52-63 (2006).
9. Nakamura K, Ogiso M, Shibahara T, Kasuga H and Isobe T. Pathogenicity of *Leucocytozoon caulleryi* for specific Pathogen Free Laying Hens. *J of Parasitol* .87:1202-1204, 2001.
10. Nakata K, Watarai S, Kodama H, Gotanda T, Ito A, Kume K. Cellular immune responses in chickens induced by recombinant R7 *Leucocytozoon caulleryi* vaccine. *J Parasitol* 89(2):419-422 (2003).
11. Pasare C, Medzhitov,R. Control of B cell Responses by Toll-like receptor. *Nature*, 364-438, 2005.
12. Singh., Dimri, U., Sharma, B., Saxena, M.: Assessment of the cytokine profile in peripheral blood mononuclear cells of naturally *Sarcoptes scabiei* var. *canis* infested dogs. *Veterinary Parasitology*. 206:253-257 (2014).
13. Suprihati E. Phylogenetic analysis of gen cytochrome B *Leucocytozoon* sp. on broiler chicken in endemic area, Indonesia. Doctoral diss. Postgraduate Program. Universitas Airlangga, 2013.
14. Soekardono S, 1986. Chicken *Leucocytozoonosis* in Java and Bali. Doctoral diss. Postgraduate Program, Institut Pertanian Bogor, 12-15, 1986.
15. Vollmer, J.: CpG motifs to modulate innate and adaptive immune responses. *Int Rev Immunol* 25, 125-134 (2006).
16. Xiao, H, Li, X., Abbot, D.W. Analysis of TLR Expression, Regulation and Signalling. Signalling by Toll like receptor. Edited by Gregory WK. CRC Press. Taylor & Francis Group. Chapter 3, 39-55, 2008.
17. Yarovinsky, F.H., Kanzier., Hieny, S, Coffman, R.L, Sher, A.: Toll-like Receptor Recognition Regulated Immunodominance in an Antimicrobial CD4+Tcell Response. *Immunity* 25, 655-664 (2006).
18. Zhao W, Pang Q, Xu R, Liu J, Liu S, Li J, Monitoring the Prevalence of *Leucocytozoon sabraezesi* in Southern China and Testing Tricyclic Compounds against Gametocytes. *PLoS ONE* 11(8): e0161869. <https://doi.org/10.1371/journal.pone.0161869>, 2016.
19. Zhu J, Paul WE. CD4 T cells: fates, functions, and faults. *Blood*, Sep 1;112(5):1557-69. doi: 10.1182/blood-2008-05-078154. (2008).



SURAT KETERANGAN
Nomor : 2934/UN3.1.6/KP/2022

Yang bertanda tangan di bawah ini :

Nama : Prof. Dr. Mirni Lamid, drh., MP
NIP : 196201161992032001
Pangkat / Golongan : Pembina Utama Madya / (Gol. IV/d)
Jabatan : Dekan

Dengan ini menerangkan bahwa :

Nama : Dr. Endang Suprihati, drh., MS
NIP : 195810211983112001
Pangkat / Golongan : Pembina TK I / (Gol. IV/b)
Jabatan : Lektor Kepala

Telah melaksanakan penelitian dengan judul sebagai berikut :

No.	Judul Karya Ilmiah	Tahun pelaksanaan Penelitian
1.	Morphological Detection of The Intestinal Parasite Blastocystis sp. In Fresh and Cultured Feces of Pet Sugar Glider (<i>Petaurus breviceps</i>) (Mammalia: Petauridae) In Surabaya, Indonesia.	2018
2.	Identification of Active Compounds of Ethanol Extract of Citrus amblycarpa leaves by Analysis of Thin-layer Chromatography and Gas Chromatography-Mass Spectrometry as Bioinsecticide Candidates for Mosquitoes	2020
3.	Histopathological studies on <i>Leucocytozoon Caulleryi</i> infection on broiler in endemic area of Indonesia	2020
4.	Potential Extract Ethanol Citrus Amblycarpa as a Bioinsecticide Against <i>Aedes Aegypti</i> Larvae	2021
5.	Protein Profile of Sporozoite of <i>Leucocytozoon</i> sp. from <i>Culicoides</i> sp.	2010
6.	Deteksi <i>Cryptosporidium canis</i> pada Anjing di Kota Surabaya	2020
7.	Eksplorasi Protein Antigenik <i>Leucocytozoon caulleryi</i> sebagai Kit Diagnostik <i>Leucocytozoonosis</i> pada Ayam Broiler	2013



UNIVERSITAS AIRLANGGA

FAKULTAS KEDOKTERAN HEWAN

Kampus C Mulyorejo Surabaya 60115 Telp. (031) 5992785, 5993016 Fax (031) 5993015

Laman: <http://www.fkh.unair.ac.id>, e-mail: info@fkh.unair.ac.id

8.	Uji reaktivitas protein 30 kDA bakteri <i>Aeromonas hydrophila</i> yang diisolasi dari ikan air tawar dengan teknik indirect ELISA.	2016
9.	Penambahan Sari Air Laut (Nigarin) Dalam Pengencer Skim Kuning Telur Terhadap Viabilitas Dan Motilitas Spermatozoa Sapi Limousin Post Thawing	2018
10.	The Effectiveness of Ethanol Extract of Red Betel Leaf (<i>Piper crocatum</i>) Against Mortality of <i>Boophilus microplus</i> Larvae In Vitro	2020
11.	Prevalence of Ectoparasites in Bean Goats on the Sub-District of Prambon, District of Nganjuk	2020
12.	Repellent Effectiveness of Permet Leaf Ethanol Extract (<i>Passiflora Foetida</i> Linn.) against <i>Aedes Aegypti</i> Adult Mosquitoes	2021
13.	Detection of Goat Digestive Tract Protozoa Through Feces Examination in Kwanyar Sub-District, Bangkalan District	2021
14.	Identification and Prevalence of Digestive Tract Endoparasites of Goats in Ujungpangkah, Gresik District	2021
15.	Morphology of surface ultrastructure of <i>Duthiersia expansa</i> (Cestoda Diphylllobothriidea) from water lizards (<i>Varamus salvator</i>) from Sidoarjo, Indonesia	2014
16.	Antigenic Protein of <i>Leucocytozoon caulleryi</i> schizont Inducing Cellular Immune Resonse: TLR-2 and CD4 as Marker	2017

Adapun penelitian tersebut tidak perlu dilakukan *Uji Etical Clearence* karena tidak menggunakan hewan coba.

Demikian surat kerangan ini kami buat untuk dapat dipergunakan sebagai persyaratan pengusulan Jabatan Fungsional **Guru Besar**

Surabaya, 8 Agustus 2022

Dekan,



Prof. Dr. Mirni Lamid, drh., MP
NIP. 196201161992032001

