

Occurrence and biodiversity of Eimeria spp. (Apicomplexa: Eimeriidae) in Madura cattle reared on Kamal Subdistrict, Madura Island, Indonesia

by Poedji Hastutiek

Submission date: 30-Sep-2022 04:28PM (UTC+0800)

Submission ID: 1912848686

File name: 23-1.pdf (832.35K)

Word count: 4093

Character count: 22261

Occurrence and biodiversity of *Eimeria* spp. (Apicomplexa: Eimeriidae) in Madura cattle reared on Kamal Subdistrict, Madura Island, Indonesia

Poedji Hastutiek^{1,2}, Nunuk Dyah Retno Lastuti¹, Lucia Tri Suwanti^{1,2}, Agus Sunarso¹, Dyah Ayu Kurniawati³, and Aditya Yudhana⁴

1. Department of Veterinary Science, Division of Veterinary Parasitology, Faculty of Veterinary Medicine, Universitas Airlangga, Surabaya, Indonesia; 2. Institute of Tropical Disease, Universitas Airlangga, Surabaya, Indonesia; 3. Indonesian Research Center for Veterinary Sciences, Indonesian Agency for Agricultural Research and Development, Ministry of Agriculture Republic Indonesia, Indonesia; 4. Department of Veterinary Medicine, School of Health and Life Sciences, Universitas Airlangga, Banyuwangi, Indonesia.

Corresponding author: Aditya Yudhana, e-mail: adityayudhana@fkh.unair.ac.id

Co-authors: PH: poedjihastutiek@gmail.com, NDRL: nunukdyah53@gmail.com, LTS: lucia-t-s@fkh.unair.ac.id, AS: drhagussunarso@gmail.com, DAK: fatimahazzaman@gmail.com

Received: 13-04-2022, **Accepted:** 01-08-2022, **Published online:** 27-08-2022

doi: www.doi.org/10.14202/vetworld.2022.2084-2088 **How to cite this article:** Hastutiek P, Lastuti NDR, Suwanti LT, Sunarso A, Kurniawati DA, and Yudhana A (2022) Occurrence and biodiversity of *Eimeria* spp. (Apicomplexa: Eimeriidae) in Madura cattle reared on Kamal Subdistrict, Madura Island, Indonesia, *Veterinary World*, 15(8): 2084–2088.

Abstract

Background and Aim: In Indonesia, Madura cattle are native breeds that are expected to contribute to the improvement of regional self-sufficiency. *Eimeria* spp. are protozoans that are commonly found in ruminants. This study aimed to identify the occurrence and diversity of *Eimeria* spp. in Madura cattle.

Materials and Methods: In this study, fresh fecal samples were collected from 100 cattle in Kamal Subdistrict, Bangkalan District, Madura Island, Indonesia. Morphological detection was performed using a light microscope, and molecular identification performed using a polymerase chain reaction. DNA amplification was conducted using various species-specific primers for *Eimeria bovis*, *Eimeria zuernii*, *Eimeria auburnensis*, *Eimeria alabamensis*, *Eimeria ellipsoidalis*, and *Eimeria cylindrica*.

Results: The results obtained 21% (21/100) of *Eimeria* spp. based on morphological detection. A total of 15 positive samples with 500–25,000/mL oocysts were selected for DNA extraction and identification, resulting in 12 positive samples. Four *Eimeria* spp. were obtained based on molecular identification: *E. bovis*, *E. zuernii*, *E. auburnensis*, and *E. cylindrica*.

Conclusion: Four species of *Eimeria* namely *E. bovis*, *E. zuernii*, *E. auburnensis*, and *E. cylindrica* were identified from fecal sample of Madura cattle using PCR method in this study. Further comprehensive studies are required to investigate the pathogenicity of *Eimeria* spp. in Madura cattle. Therefore, improved and integrated management practices should be strengthened by local governments to prevent pathogenic diseases and increase national livestock productivity in Indonesia.

Keywords: biodiversity, *Eimeria* species, infectious disease, Madura cattle, Madura Island.

Introduction

Bovine coccidiosis, caused by *Eimeria* spp., is a parasitic disease that is common in cattle. There are approximately 21 *Eimeria* species in cattle, of which *Eimeria bovis* and *Eimeria zuernii* are the most pathogenic [1]. Coccidiosis in adult animals is often asymptomatic but can be a reservoir for calves [2]. Infection in calves causes diarrhea, dehydration, dysentery, debilitation, and death in severe cases [3]. Although most of them are non-pathogenic, *Eimeria* spp. can cause intestinal tissue damage and decrease productivity in meat and milk [4]. In addition, *Eimeria* spp. infection in cattle can increase their vulnerability to other infectious diseases such as pneumonia and bacterial and viral disease [5, 6]. The economic loss due to coccidiosis in cattle was estimated at USD 400 million

worldwide. In Mexico, coccidiosis reportedly affects the economics of large and small ruminants, with annual losses up to USD 23.7 million [6].

Coccidiosis cases are easily found in managed farms in dirty environments, which contaminated by *Eimeria* oocysts. Cattle are infected with *Eimeria* spp. through ingestion of sporulated oocysts that contaminate water and feed as the main source of transmission [7]. Factors related to the prevalence of *Eimeria* spp. infection in cattle include farm management, age, and environmental temperature [8]. In Indonesia, farm management is mainly based on traditional systems managed by family units. Madura cattle are one of the main meat sources in Madura Island, Indonesia. This breed is also expected to contribute to the improvement of regional meat self-sufficiency. The manifestation of *Eimeria* spp. in the cattle might be affecting the achievement of the program.

To the best of our knowledge, there are no data regarding economic loss due to bovine coccidiosis in Indonesia because most studies only focused on poultry coccidiosis. Only a few studies have reported *Eimeria* infections, particularly cattle in Indonesia. Ananta *et al.* [9] reported 22.4% prevalence of *Eimeria*

Copyright: Hastutiek, *et al.* Open Access. This article is distributed under the terms of the Creative Commons Attribution 4.0 International License (<http://creativecommons.org/licenses/by/4.0/>), which permits unrestricted use, distribution, and reproduction in any medium, provided you give appropriate credit to the original author(s) and the source, provide a link to the Creative Commons license, and indicate if changes were made. The Creative Commons Public Domain Dedication waiver (<http://creativecommons.org/publicdomain/zero/1.0/>) applies to the data made available in this article, unless otherwise stated.

in cattle in West Java Province, and Hamid *et al.* [10] reported 15.5% in Central Java Province. Coccidiosis in Madura cattle was also reported microscopically by Hastutiek *et al.* [11], with a prevalence of 75.07%. However, in almost studies, *Eimeria* spp. were only observed morphologically using the microscopic examination. The first report of *Eimeria* species based on molecular identification in Indonesia was done by Ekawasti *et al.* [4], who reported that the prevalence of each species was 10% [17], 2.8%, 2.1%, 1.4%, 1.1%, and 0.4%, for *E. bovis*, *Eimeria ellipsoidalis*, *Eimeria alabamensis*, *E. zuernii*, *Eimeria auburnensis*, and *Eimeria cylindrical*.

Therefore, this study aimed to identify various species of *Eimeria* spp. in Madura cattle using a molecular diagnostic approach.

Materials and Methods

Ethical approval

No ethical approval was required as samples were collected for diagnostic purposes only. This study not used cattle as the sample but used only fresh fecal samples that had been collected from around the enclosures. However, sample collections in the field were conducted with permission from the Animal Husbandry Department in Bangkalan District, Madura Island.

Study period and location

The study was conducted from January to December 2020. The fecal samples of Madura cattle were collected in the Kamal Subdistrict, Bangkalan District, Madura Island. Morphological and molecular identification of *Eimeria* spp. were conducted in the Laboratory of Veterinary Parasitology, Division of Veterinary Parasitology, Department of Veterinary Science, Faculty of Veterinary Medicine, Universitas Airlangga, Surabaya, East Java Province, Indonesia.

Study sites and sampling methods

Kamal Subdistrict (112.72713 longitude and -7.136996 latitude) is a part of the Bangkalan District on Madura Island. The area spans over 41.40 km². Madura cattle (*Sapi Madura*) are a stable, inbred hybrid of Zebu and Banteng (*Bos javanicus*) [12] that originated from the island of Madura. Their body appearance is very similar to that of Bali cattle, which have the same origin as Banteng. The color is reddish-brown with non-specific white patterning on the leg and rump. Adult bulls weigh approximately 250–300 kg. A total of 100 cattle fecal samples were collected from fresh dung (<8 h) and stored in plastic bags containing potassium dichromate. No animals showed specific clinical symptoms when fecal samples were collected. Sample size calculation based on 10% of the total Madura cattle population from each village were located in north, south, east, west, and center part of Kamal Subdistrict.

Fecal examination

The samples were analyzed using modified sugar flotation methods [13]. Sugar flotation methods were

used, with a specific gravity of 1.2 (Gulaku Indonesia, Lampung, Indonesia). Approximately 2–4 g of feces was diluted with 12 mL of Aquadest. The fecal solution was filtered, and the filtrate was transferred to a 15 mL centrifuge tube. The sample was centrifuged at 3000× g for 10 min. The supernatant was discarded and resuspended in a sugar solution. The suspension was mixed and centrifuged at 3000× g for 10 min. The supernatant was collected and examined on a glass slide at 100× and 400× under a light microscope (Olympus, Guangzhou, China). *Eimeria* parasites were identified based on morphological features, such as size, shape, number of sporozoites, and other notable characteristics [14]. A qualitative microscopic examination was performed to determine the presence and absence of oocysts. A quantitative examination was performed by counting the number of oocysts per milliliter.

The purification was performed using a positive sample. *Eimeria* oocysts were purified using the sugar flotation method [15]. *Eimeria* oocysts were placed on the surface of the sugar solution using a pipette of approximately 1–2 mL. The supernatant was washed three times with distilled water. The pellet was added to 1–2 mL of PBS and stored at 4°C.

Molecular identification

Fifteen morphologically positive samples were subjected to molecular analyses. The selection of molecular samples was based on the number of oocysts containing 250–25,000 oocysts per milliliter of fecal solution. DNA was extracted using DNAzol (Ohio, USA), according to the manufacturer's recommended procedures. DNA was amplified using the primer pairs *Eimeria* specific species primers [15, 16]. Primers were specific for *E. bovis*, *E. zuernii*, *E. auburnensis*, *E. cylindrical*, *E. alabamensis*, and *E. ellipsoidalis*. In this study, the amplification reaction was performed in a 25 µL solution consisting of 25.5 µL of Bioline Mastermix (Bioline, Taiwan), 1 µL of each primer, 8.5 µL distilled water, and 2 µL of the DNA template. Amplification involved an initial denaturation phase at 94°C for 30 s, followed by 35 cycles at 94°C for 10 s, 52°C for 20 s, and 72°C for 20 s, and a final extension at 72°C for 2 min [15]. Then, 10 µL of polymerase chain reaction (PCR) products were electrophoresed on 1.5% agarose gel, stained with ethidium bromide, and visualized in an ultraviolet transilluminator.

Results

Eimeria spp. were identified in 21 of the 100 (21%) fecal samples using microscopy. The morphology of *Eimeria* spp., sporulated, and unsporulated oocysts, based on observation under a light microscope, is shown in Figure-1. Of 15 samples amplified by PCR, 12 samples were successfully amplified. The results of running PCR products showed that four *Eimeria* species were found: *E. bovis*, *E. zuernii*, *E. auburnensis*, and *E. cylindrical* (Figure-2a-d).

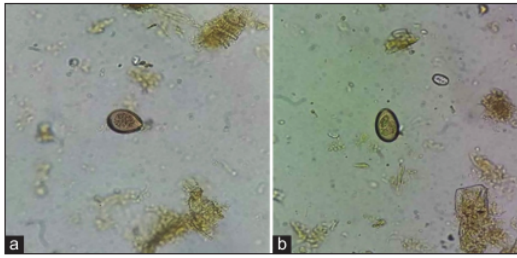


Figure-1: Identification of *Eimeria* spp. unsporulated oocyst (left) and sporulated oocyst (right) using a light microscope (400×).

Six samples were detected for *E. bovis*, three for *E. zuernii*, two for *Eimeria Aurburnensis*, and one for *E. cylindrica*. *E. bovis* was detected more frequently in this study. Five samples were found with a single infection and three samples with mixed infections.

Discussion

Many studies have reported the prevalence of *Eimeria* spp. in cattle in different countries using a standard microscopy examination to detect oocysts [2, 3, 8, 10]. The prevalence was different in each country; the prevalence of *Eimeria* infection 75.5% in Colombia [3], 22.1% in South Korea [8], 47.09% in Pakistan [16], and 11.97% in India [17]. Ekawasti *et al.* [4] reported 52.3% prevalence of *Eimeria* on Java Island. Furthermore, bovine coccidiosis has also been reported in Maluku Island as the highest (94.1%) prevalence, followed by Kalimantan (83%), Sumatra (70.3%), Sulawesi (68.9%), Papua (62.3%), and Nusa Tenggara (58.5%) [18]. The variation in prevalence and type of infection can differ depending on the various infection rates and shedding intensities of individuals. These differences might be due to geographical conditions, sources of feed, and feeding behavior [19].

Based on the molecular diagnostic findings, 12 samples were shown positive. *E. bovis* was frequently found in this study, followed by *E. zuernii*, *Eimeria aurburnensis*, and *E. cylindrica*. In South Korea, Lee *et al.* [8] reported that *E. bovis* was identified in 79% and *E. zuernii* in 66% of samples. Ekawasti *et al.* [4] also reported that *E. bovis* (10.4%) is the most prevalent species on Java Island, Indonesia. Using PCR as a molecular approach, Lee *et al.* [8] successfully identified three species of *Eimeria*, namely, *E. bovis*, *E. zuernii*, and *E. aurburnensis*. Ekawasti *et al.* [4] identified *E. bovis*, *E. ellipsoidalis*, *E. alabamensis*, *E. zuernii*, *E. aurburnensis*, and *E. cylindrica*. Moreover, in this study, not all the positive samples in the microscopic examination showed positive PCR results. A possible reason for this is the limited number of oocysts in fecal samples. Those findings were supported by the statement of Carvalho *et al.* [20], Mirhashemi *et al.* [21], and Ekawasti *et al.* [4], who explained that a small number of oocysts were not sufficient for species identification

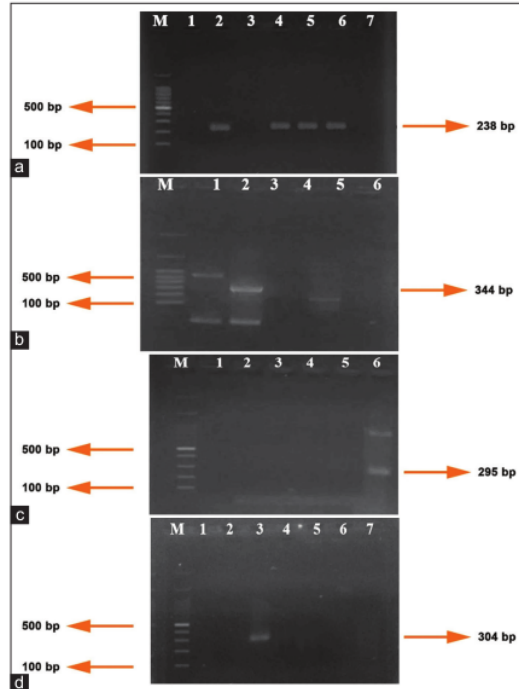


Figure-2: (a) Polymerase chain reaction (PCR) DNA products of *Eimeria bovis* from fecal sample of Madura cattle. M=DNA ladder; 1–7 samples. Samples 1, 3, and 7 are negative and samples 2, 4, 5, and 6 are positive. (b) PCR DNA products of *Eimeria zuernii* from fecal sample of Madura cattle. M=DNA ladder; 1–5 samples. Samples 1, 3, 4, and 5 are negative and sample 2 is positive. (c) PCR DNA products of *Eimeria aurburnensis* from fecal sample of Madura cattle. M=DNA ladder; 1–6 samples. Samples 1, 2, 3, 4, and 5 are negative and sample 6 is positive. (d) PCR DNA products of *Eimeria cylindrica* from fecal sample of Madura cattle. M=DNA ladder; 1–7 samples. Samples 1, 2, 4, 5, 6, and 7 are negative and sample 3 is positive.

using the PCR method. The presence of contaminants possibly also inhibited the PCR process during the procedures [4, 15].

Bovine coccidiosis can cause not only growth delays but also a decrease in body performance and cattle production. These clinical signs also affect the quality of adult cattle, thus resulting in high morbidity and mortality in calves, inhibiting the sustainability of livestock production [22]. Theoretically, coccidiosis is a pathogenic disease of young animals, but poor nutritional and environmental management can be potential risk factors for older animals. Adult cattle with chronic infection are frequently diagnosed with anorexia, weight loss, emaciation, bloody diarrhea, and blood-stained dung in perineum and tail part [23].

In this study, Madura cattle were infected with either single or mixed *Eimeria* species. Coccidiosis in cattle is typically caused by more than one species of *Eimeria*. The Madura cattle in this study were infected with single or mixed *Eimeria*. Bangoura *et al.* [2] reported that 48.6% of cases of diarrhea in calves were

caused by a single infection, and 51.4% had mixed infections. Morgoglione *et al.* [24] also reported that 71.2% of cattle were infected with more than 1 *Eimeria* species. These previous results were different from our study, which showed that a single infection was recorded more frequently compared to mixed infections. In the sampling area, the management of cages and sanitation is also known to be improper because feces that were cleared from the cages were dumped right around the cages, which might potentially increase the risk of infection and reinfection [25, 26]. The majority of cages are also known to be traditional and still not equipped with feces and urine disposal lines.

Management patterns also affect the occurrence of *Eimeria* spp. infection, such as sanitation method, drainage system, population density, cage structure, feeding systems, and drinking sources [27]. Occurrences of infection and intensity of *Eimeria* spp. in cattle were also recorded at a lower percentage in a cage compared to pasture [28]. Therefore, cattle shed a lot of oocysts through feces in their closed cages every day during the patent period, which can increase the risk of transmission and increase the development cycle of *Eimeria* spp. The clinical signs of bovine coccidiosis frequently appear 2–3 weeks after infection in a contaminated environment condition [29].

To date, there have been rare reports of molecular investigations of *Eimeria* spp., especially in Indonesia [4, 30]. Although the number of samples in our study was limited, we revealed that the samples could be identified at the species level for *Eimeria* spp. using the molecular method. Therefore, comprehensive studies are required to further investigate the pathogenicity of *Eimeria* spp. infection in Madura cattle and improve productivity through improved and integrated livestock management practices.

Conclusion

The occurrence of *Eimeria* spp. infection in Madura cattle in Kamal Subdistrict, Bangkalan District, Madura Island, is 12% detected by PCR using specific species primer. Moreover, this study successfully obtained four species: *E. bovis*, *E. zuernii*, *E. auburnensis*, and *E. cylindrica*. The occurrence of *Eimeria* spp. among Madura cattle should be considered because bovine coccidiosis is probably distributed in most parts of Madura Island. Based on these findings, molecular detection of coccidiosis in Madura cattle can be applied not only in one district but also in several districts, with different conditions associated with the risk factors. The biosecurity measures need to be strengthened among traditional farmers to control the transmission of *Eimeria* spp. in Madura cattle.

Authors' Contributions

PH, LTS, AS, and DAK: Collected fecal samples. PH, NDRL, and DAK: Analyzed the microscopic

observation and molecular identification. PH, DAK, and AY: Wrote original draft and revised the manuscript. All authors have read and approved the final manuscript.

Acknowledgments

The authors gratefully acknowledge the Directorate General of Research and Development Strengthening of Ministry of Research, Technology and Higher Education, Indonesia, for financial support with a research grant through the Budget Executive Checklist (Grant number 758/UN3.14/PT/2020).

Competing Interests

The authors declare that they have no competing interests.

Publisher's Note

Veterinary World remains neutral with regard to jurisdictional claims in published institutional affiliation.

References

- Tomczuk, K., Grzybek, M., Szczepaniak, K., Studzińska, M., Demkowska-Kutzepa, M., Roczeń-Karczmarz, M. and Klockiewicz, M. (2015) Analysis of intrinsic and extrinsic factors influencing the dynamics of bovine *Eimeria* spp. from central-eastern Poland. *Vet. Parasitol.*, 214(1–2): 22–28.
- Bangoura, B., Mundt, H.C., Schmäsckke, R, Westphal, B. and Dauschies, A. (2012) Prevalence of *Eimeria bovis* and *Eimeria zuernii* in German cattle herds and factors influencing oocyst excretion. *Parasitol. Res.*, 110(2): 875–881.
- Lopez-Osorio, S., Villar, D., Failing, K., Taubert, A., Hermosilla, C. and Chaparro-Gutierrez, J.J.C. (2020) Epidemiological survey and risk factor analysis on *Eimeria* infections in calves and young cattle up to 1 year old in Colombia. *Parasitol. Res.*, 11(1): 255–266.
- Ekawasti, F., Nurcahyo, W., Wardhana, A.H, Shibahara, T., Tokoro, M., Sasai, K. and Matsubayashi, M. (2019) Molecular characterization of highly pathogenic *Eimeria* species among beef cattle on Java Island, Indonesia. *Parasitol. Int.*, 72: 101927.
- Fox, J.E. (1985) Coccidiosis in cattle. *Mod. Vet. Pract.*, 66(1): 113–116.
- Gräfner, G., Graubmann, H.D., Schwartz, K., Hiepe, T. and Kron, A. (1985) Investigation on occurrence and epizootiology of *Eimeria* as coccidiosis agent in cattle under the conditions of intensive husbandry [Weitere untersuchungen zu vorkommen, epizootiologie und bekämpfung der *Eimeria* kokzidiose des rindesunter den bedingungenintensivstallhaltung]. *Monatsh Vet. Med.*, 40(1): 41–44.
- Lassen, B., Lepik, T. and Järvis, T. (2014) Seasonal recovery of *Eimeria* oocysts from soil on naturally contaminated pastures. *Parasitol. Res.*, 113(3): 993–999.
- Lee, S.H., Kim, H.Y., Lee, H., Ke, J.W., Lee, Y.R., Chae, M.J., Oh, S.I., Kim, J.H., Rhee, M.H., Kwon, O.D., Goo, Y.K., Kim, T.H., Geraldino, P.J.L. and Kwak, D. (2018) *Eimeria* species in cattle with diarrhea in the Republic of Korea regarding age, season and nature of diarrhea. *Vet. Rec.*, 183(16): 504.
- Ananta, S.M., Suharno, A.M., Matsubayashi, M. and Hidayat. (2014) Survey on gastrointestinal parasites and detection of *Cryptosporidium* spp. on cattle in West Java, Indonesia. *Asian Pac. J. Trop. Med.*, 7(3): 197–201.
- Hamid, P.H., Kristianingrum, Y.P., Prastowo, J., and da Silva, L.M.R. (2016) Gastrointestinal parasites of cattle in

- central Java. *Am. J. Anim. Vet. Sci.*, 11(1): 119–124.
11. Hastutiek, P, Yuniarti, W.M., Djaeri, M., Lastuti, N.D.R., Suprihati, E. and Suwanti, L.T. (2019) Prevalence and diversity of gastrointestinal protozoa in Madura cattle at Bangkalan regency, East Java, Indonesia. *Vet. World*, 12(2): 198–204.
 12. Popescu, C.P. and Smith, W.G. (1988) A Cytogenetic investigation of Madura cattle. *Reprod Dom Anim.*, 23(3): 145.
 13. Matsubayashi, M., Takami, K., Kimata, I., Nakanishi, T., Tani, H., Sasai, K. and Baba, E. (2005) Survey of *Cryptosporidium* spp. and *Giardia* spp. Infections in various animals at a zoo in Japan. *J. Zoo Wild. Med.*, 36(2): 331–335.
 14. Soulsby, E.J.L. (1986) Helminths, Arthropods, and Protozoa of Domestic Animals. 7th ed. Bailliere, Tindall and Cassel, London. p594–664.
 15. Kawahara, F., Zhang, G., Mingala, C.N., Tamura, Y., Koiwa, M., Onuma, M. and Nunoya, T. (2010) Genetic analysis and development of specific PCR assays based on ITS-1 region of rRNA in bovine *Eimeria* parasites. *Vet. Parasitol.*, 174(1–2): 49–57.
 16. Rehman, T.U., Khan, M.N., Sajid, M.S., Abbas, R.Z., Arshad, M., Iqbal, Z. and Iqbal, A. (2011) Epidemiology of *Eimeria* and associated risk factors in cattle of district Toba Tek Singh, Pakistan. *Parasitol. Res.*, 108(5): 1171–1177.
 17. Das, M., Deka, D.K., Sarmah, P.C., Islam, S. and Sarma, S. (2015) Diversity of *Eimeria* spp. in dairy cattle of Guwahati, Assam, India. *Vet. World*, 8(8): 941–945.
 18. Ekawasti, F., Nurcahyo, R.W., Firdausy, L.W., Wardhana, A.H., Sawitri, D.H., Prastowo, J. and Priyowidodo, D. (2021) Prevalence and risk factors associated with *Eimeria* species infection in cattle of different geographical regions of Indonesia. *Vet. World*, 14(9): 2339–2345.
 19. De Andrade, A.L.F., Da Silva, P.C., De Aguiar, E.M. and Santos, F.G.A. (2012) Use of coccidiostat in mineral salt and study on ovine eimeriosis. *Rev. Bras. Parasitol. Vet.*, 21(1): 16–21.
 20. Carvalho, F.S., Wenceslau, A.A., Teixeira, M., Carneiro, J.A.M., Melo, A.D. and Albuquerque, G.R. (2011) Diagnosis of *Eimeria* species using traditional and molecular methods in field studies. *Vet. Parasitol.*, 176(2–3): 95–100.
 21. Mirhashemi, M.E., Zintl, A., Grant, T., Lucy, F., Mulcahy, C. and Waal T.D. (2016) Molecular epidemiology of *Cryptosporidium* species in livestock in Ireland. *Vet. Parasitol.*, 216: 18–22.
 22. Heidari, H. and Gharekhani, J. (2014) Detection of *Eimeria* species in Iranian native cattle. *Int. J. Adv. Res.*, 2(7): 731–734.
 23. Sudhakara, R.B., Sivajothi, S. and Rayulu, V.C. (2015) Clinical coccidiosis in adult cattle. *J. Parasit. Dis.*, 39(3): 557–559.
 24. Morgoglione, M.E., Bosco, A., Maurelli, M.P., Alves, L.C., Saralli, G., Bruni, G., Cringoli, G. and Rinaldi, L. (2020) A 10-year surveillance of *Eimeria* spp. in cattle and buffaloes in a Mediterranean area. *Front. Vet. Sci.*, 7: 410.
 25. Marskole, P., Verma, Y., Dixit, A.K. and Swamy, M. (2016) Prevalence and burden of gastrointestinal parasites in cattle and buffaloes in Jabalpur, India. *Vet. World*, 9(11): 1214–1217.
 26. Nurgiartiningsih, V.M.A., Budiarto, A. Kusmartono, S. (2016) Evaluation of performance in female Madura cattle in Madura Island, Indonesia. *Anim. Prod.*, 18(3): 125–130.
 27. Makau, D.N., Gitau, G.K., Muchemi, G.K., Thomas, L.F., Cook, E.A., Wardrop, N.A., Fevre, E.M. and De Glanville, W.A. (2017) Environmental predictors of bovine *Eimeria* infection in western Kenya. *Trop. Anim. Health Prod.*, 49(2): 409–416.
 28. Jäger, M., Gualy, M., Bauer, C., Failing, K., Erhardt, G. and Zahner, H. (2005) Endoparasites in calves of beef cattle herds: Management systems dependent and genetic influences. *Vet. Parasitol.*, 131(3–4): 173–191.
 29. Hussin, A.G. (2016) Prevalence and associated risk factors of *Eimeria* spp. in cattle of Baghdad, Iraq. *J. Appl. Anim. Sci.*, 9(1): 37–44.
 30. Hastutiek, P., Lastuti, N.D.R., Suwanti, L.T. Sunarso, A., Suprihati, E., Kurniawati, D.A. and Masubayashi, M. (2021) Coproparasitological examinations and molecular determination of *Eimeria* species in Madura cattle reared on Madura Island, Indonesia. *Parasitol. Int.* 86: 102478.

Occurrence and biodiversity of Eimeria spp. (Apicomplexa: Eimeriidae) in Madura cattle reared on Kamal Subdistrict, Madura Island, Indonesia

ORIGINALITY REPORT

19%

SIMILARITY INDEX

14%

INTERNET SOURCES

16%

PUBLICATIONS

0%

STUDENT PAPERS

PRIMARY SOURCES

1	www.e-sc.org Internet Source	3%
2	Dyah Haryuningtyas Sawitri, April Hari Wardhana, Eny Martindah, Fitri Ekawasti et al. "Detections of gastrointestinal parasites, including Giardia intestinalis and Cryptosporidium spp., in cattle of Banten province, Indonesia", Journal of Parasitic Diseases, 2019 Publication	1%
3	tel.archives-ouvertes.fr Internet Source	1%
4	gsejournal.biomedcentral.com Internet Source	1%
5	wikimili.com Internet Source	1%
6	Yudi Hartono, Khoirul Huda. "Development Concept of Controversial History Material in	1%

Senior High School in Indonesia", Proceedings
of the 4th International Conference on
Learning Innovation and Quality Education,
2020

Publication

7	www.thescipub.com Internet Source	1 %
8	www.zooparaz.net Internet Source	1 %
9	Berit Bangoura, Hans-Christian Mundt, Ronald Schmäschke, Bernhard Westphal, Arwid Dauschies. "Prevalence of Eimeria bovis and Eimeria zuernii in German cattle herds and factors influencing oocyst excretion", Parasitology Research, 2011 Publication	1 %
10	f1000research.com Internet Source	1 %
11	ejnmires.springeropen.com Internet Source	1 %
12	theses.whiterose.ac.uk Internet Source	1 %
13	Cytra Meyliana Surya Dewi, Yeni Dhamayanti, Faisal Fikri, Agus Purnomo et al. "An investigation of syrinx morphometry and sound frequency correlation during the	<1 %

chirping period in lovebirds (*Agapornis fischeri*)", F1000Research, 2022

Publication

14

Samaan, Gina, Risa Indriani, Luis Roman Carrasco, Kamalini Lokuge, Alex R. Cook, Paul M. Kelly, and Rma Adjid. "Prioritizing live bird markets at risk of avian influenza H5N1 virus contamination for intervention: A simple tool for low resource settings", *Preventive Veterinary Medicine*, 2012.

Publication

<1 %

15

intl-jcm.asm.org

Internet Source

<1 %

16

www.gutnliver.org

Internet Source

<1 %

17

Leonardo Bueno Cruvinel, Lorena Lopes Ferreira, João Eduardo Nicaretta, Luiz Fellipe Monteiro Couto et al. "Eimeria spp. in naturally infected beef cattle: dynamics of oocysts excretion, prevalence, and comparison between parasitological diagnostics", *Preventive Veterinary Medicine*, 2021

Publication

<1 %

18

repositorio.uam.es

Internet Source

<1 %

19

Makoto MATSUBAYASHI, Toshimasa KITA, Tsuguto NARUSHIMA, Isao KIMATA, Hiroyuki TANI, Kazumi SASAI, Eiichiroh BABA.

"Coprological Survey of Parasitic Infections in Pigs and Cattle in Slaughterhouse in Osaka, Japan", Journal of Veterinary Medical Science, 2009

Publication

<1 %

20

Yazmin Alcala-Canto, Juan Antonio Figueroa-Castillo, Froylan Ibarra-Velarde, Yolanda Vera-Montenegro et al. "First database of the spatial distribution of Eimeria species of cattle, sheep and goats in Mexico", Parasitology Research, 2020

Publication

<1 %

21

Makoto MATSUBAYASHI, Tomoyuki SHIBAHARA, Tomohide MATSUO, Toshimitsu HATABU, Junya YAMAGISHI, Kazumi SASAI, Takashi ISOBE. "Morphological and molecular identification of *Eimeria* spp. in breeding chicken farms of Japan", Journal of Veterinary Medical Science, 2020

Publication

<1 %

22

William C Marquardt, CA Speer. "Protozoan Pathogens of Domestic and Companion Animals", Wiley, 2001

Publication

<1 %

23

Internet Source

<1 %

24

worldwidescience.org

Internet Source

<1 %

25

www.dovepress.com

Internet Source

<1 %

26

E.S.E. Mitchell, R.P. Smith, J. Ellis-Iversen.
"Husbandry risk factors associated with
subclinical coccidiosis in young cattle", The
Veterinary Journal, 2012

Publication

<1 %

27

Xueyong Zhang, Yingna Jian, Xiuping Li, Liqing
Ma, Gabriele Karanis, Cai Qigang, Panagiotis
Karanis. "Molecular detection and prevalence
of Cryptosporidium spp. infections in two
types of domestic farm animals in the
Qinghai-Tibetan Plateau Area (QTPA) in
China", Parasitology Research, 2017

Publication

<1 %

28

dx.doi.org

Internet Source

<1 %

29

enaca.org

Internet Source

<1 %

30

eprints.lib.hokudai.ac.jp

Internet Source

<1 %

geb.uni-giessen.de

31

Internet Source

<1 %

32

ibic.lib.ku.ac.th

Internet Source

<1 %

33

journal.biotrop.org

Internet Source

<1 %

34

journals.plos.org

Internet Source

<1 %

35

www.e-journal.unair.ac.id

Internet Source

<1 %

36

www.edp-open.org

Internet Source

<1 %

37

J.P. Dubey. "A review of coccidiosis in water buffaloes (*Bubalus bubalis*)", *Veterinary Parasitology*, 2018

Publication

<1 %

38

Kazue Katsui, Shigeaki Takami, Kousuke Ohashi, Hiromi Otsuka et al. "Molecular identification of *Eimeria* species in liver and feces of naturally infected rabbits in Japan", *Parasitology Research*, 2022

Publication

<1 %

39

Maria Elena Morgoglione, Antonio Bosco, Lavinia Ciuca, Paola Pepe, Gerald C. Coles, Giuseppe Cringoli, Laura Rinaldi. "In Vitro Evaluation of Ozonated Water Treatment on

<1 %

the Viability of Eimeria Oocysts and Giardia Cysts from Water Buffaloes: A Proof-of-Concept Study", Veterinary Sciences, 2021

Publication

Exclude quotes Off

Exclude matches Off

Exclude bibliography On

Occurrence and biodiversity of Eimeria spp. (Apicomplexa: Eimeriidae) in Madura cattle reared on Kamal Subdistrict, Madura Island, Indonesia

GRADEMARK REPORT

FINAL GRADE

/0

GENERAL COMMENTS

Instructor

PAGE 1

PAGE 2

PAGE 3

PAGE 4

PAGE 5
