



**Journal of International Dental and Medical Research**



## **Journal of International Dental and Medical Research**

**ISSN 1309-100X**

### **AIMS&SCOPE**

Journal of International Dental and Medical Research is an internationally pulising journal by the Ectodermal Dysplasia Group-Turkey, JIDMR publish 4 times per year (In March, June, September, December; published at the end of the month or at the beginning of the following month) to promote practice, education, and research specifically related to the specialty of dental and medical researchs. Manuscripts are accepted for consideration if neither the article, nor any part of its essential substance, tables, or figures has been or will be published in another journal or is simultaneously submitted to another journal. Published papers do not necessarily represent the views of the editor, the Ectodermal Dysplasia Group-Turkey.

The Medical and Biomedical Research section of JIDMR is a section for research papers from all major related fields of Dentistry with neuroscience, biophysics, environmental sciences algology, biotechnology and pharmacology. The journal will be high quality, comprehensive, exceptionally fast and consistently peer reviewed. It will be a multi-disciplinary publication for rapid communication in Biomedical research, for the promotion of the international scientific collaboration, for presenting the

achievements that emphasize clinical, fundamental and molecular aspects of biomedical studies in the all of world.

Fast publication will be achieved by the use of modern communication techniques. The journal features full-length papers, rapid communications and mini-reviews on selected areas.

Manuscript and Peer Review Submission process is by the e-mail to the [jjdmreditor@outlook.com](mailto:jjdmreditor@outlook.com)

Prof. Dr. Izzet YAVUZ

Editor-in-Chief and General Director

Journal of International Dental and Medical Research ISSN  
1309 – 100X

Design:TwTDizayn

www.jidmr.com

www.journalofinternationaldentalandmedicalresearch.com





# Source details

## Journal of International Dental and Medical Research

Scopus coverage years: from 2009 to 2021

Publisher: Ektodermal Displazi Grubu

ISSN: 1309-100X

Subject area: Dentistry: General Dentistry

Source type: Journal

CiteScore 2020

1.3



SJR 2020

0.259



SNIP 2020

0.759



[View all documents >](#)

[Set document alert](#)

[Save to source list](#) [Source Homepage](#)

[CiteScore](#) [CiteScore rank & trend](#) [Scopus content coverage](#)

### i Improved CiteScore methodology



CiteScore 2020 counts the citations received in 2017-2020 to articles, reviews, conference papers, book chapters and data papers published in 2017-2020, and divides this by the number of publications published in 2017-2020. [Learn more >](#)

### CiteScore 2020

$$1.3 = \frac{1.250 \text{ Citations 2017 - 2020}}{953 \text{ Documents 2017 - 2020}}$$

Calculated on 05 May, 2021

### CiteScoreTracker 2021

$$1.1 = \frac{1.165 \text{ Citations to date}}{1.038 \text{ Documents to date}}$$

Last updated on 06 March, 2022 • Updated monthly

### CiteScore rank 2020

Category	Rank	Percentile
Dentistry		
General Dentistry	#75/111	32nd

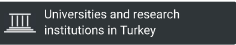
[View CiteScore methodology >](#) [CiteScore FAQ >](#) [Add CiteScore to your site](#)

←

Ads by Google


Stop seeing this ad Why this ad? ⓘ

## Journal of International Dental and Medical Research

<p>COUNTRY</p> <p>Turkey</p> 	<p>SUBJECT AREA AND CATEGORY</p> <p>Dentistry</p> <ul style="list-style-type: none"> <li>Dentistry (miscellaneous)</li> </ul>	<p>PUBLISHER</p> <p>Ektodermal Displazi Grubu</p>	<p>H-INDEX</p> <p>13</p>
<p>PUBLICATION TYPE</p> <p>Journals</p>	<p>ISSN</p> <p>1309100X</p>	<p>COVERAGE</p> <p>2009-2020</p>	

SCOPE

Information not localized

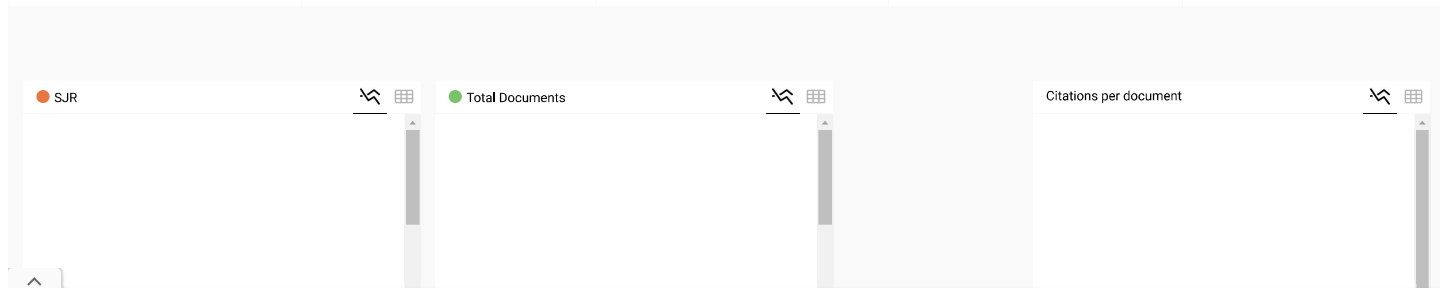
 Join the conversation about this journal

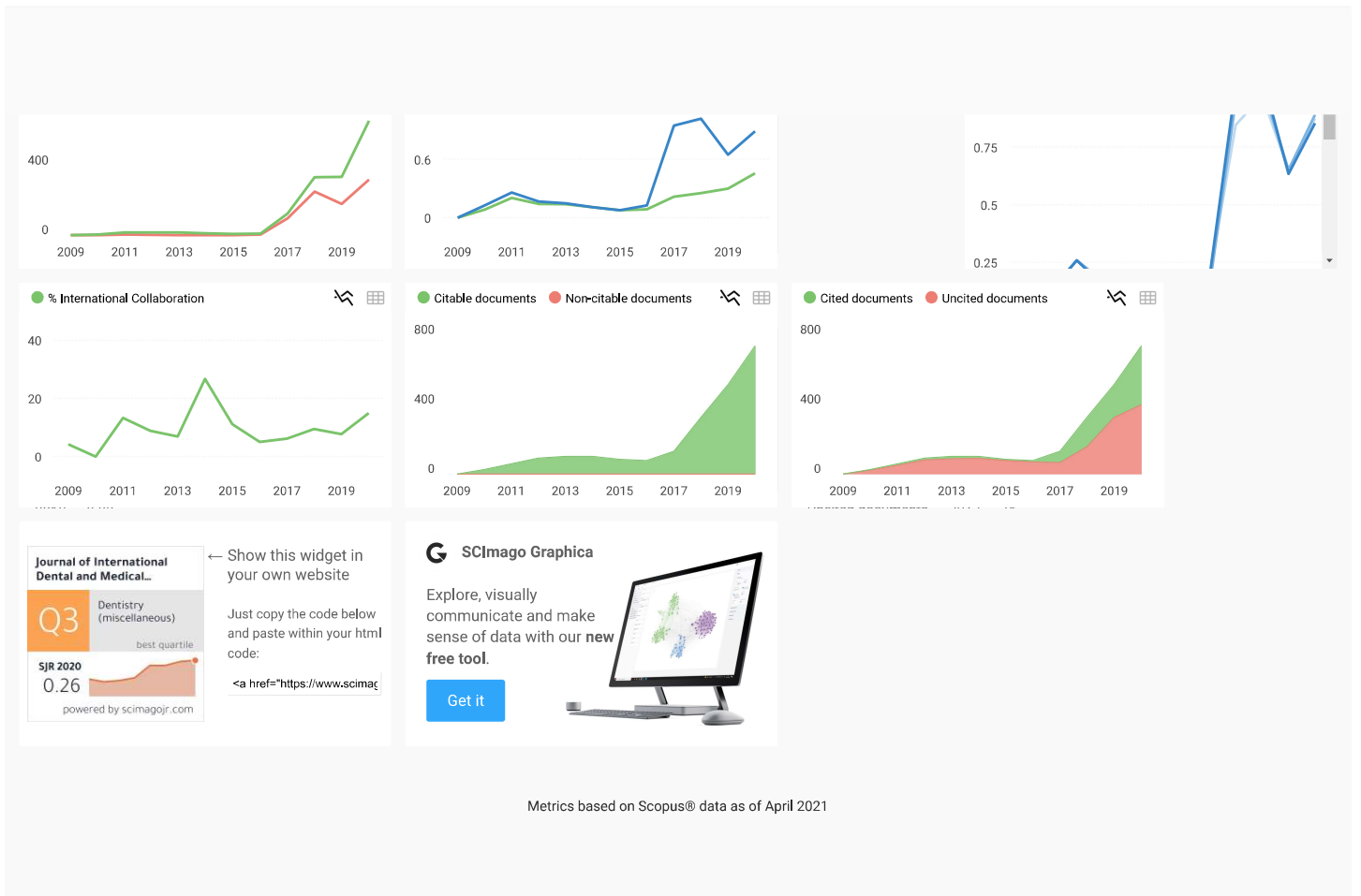
Quartiles

FIND SIMILAR JOURNALS 

options

<p>1</p> <p>Journal of International Oral Health</p> <p>IND</p> <p>40%</p> <p>similarity</p>	<p>2</p> <p>Pesquisa Brasileira em Odontopediatria e Clinica</p> <p>BRA</p> <p>38%</p> <p>similarity</p>	<p>3</p> <p>Journal of International Society of Preventive and</p> <p>IND</p> <p>37%</p> <p>similarity</p>	<p>4</p> <p>Indian Journal of Dental Research</p> <p>IND</p> <p>36%</p> <p>similarity</p>	<p>5</p> <p>International Journal of Dentistry</p> <p>USA</p> <p>36%</p> <p>similarity</p>
--	--	--	---	--





**D** **Dr A Sri Pavan Kumar** 1 month ago  
Hi is JIDMR is still in Scopus indexed  
reply

**Melanie Ortiz** 1 month ago SCImago Team  
Dear Dr A Sri Pavan,  
Thank you very much for your comment.  
All the metadata have been provided by Scopus /Elsevier in their last update sent to SCImago, including the Coverage's period data. The SJR for 2020 was released on 17 May 2021. We suggest you consult the Scopus database directly to see the current index status as SJR is a static image of Scopus, which is changing every day.  
Best Regards, SCImago Team

**R** **Ruby** 1 year ago  
I would like to send an article to JIDMR, are there any submission web system\*  
reply

**Melanie Ortiz** 1 year ago SCImago Team  
Dear Ruby, thank you very much for your comment, we suggest you look for the author's instructions/submission guidelines in the journal's website. Best Regards, SCImago Team

**A** **azhari** 1 year ago  
Dear Mr. Izzet Yavuz  
why still confused, because I have more than 6 articles published in your journal but not fine in the Scopus index, so I hope you can explain in detail and you must help me with it a serious problem for my career at university padjadjaran bandung.  
I think a lot of question from kolega with the same problem ..



Journal of International Dental and Medical Research



## Editorial Board of JIDMR

Prof. Dr. Izzet YAVUZ

Editor-in-Chief and General Director

### Advisory Board

Prof. Dr. Refik ULKU Editor for Medicine

Prof. Dr. Zulkuf AKDAG Editor for Biomedical Research

Prof. Dr. Ozkan ADIGUZEL Associate Editor

Gajanan Kiran KULKARNI (CANADA)

Betul KARGUL (TURKEY)

Diah Ayu MAHARANI (INDONESIA)

Francisco Cammarata-Scalisi (Venezuela)

Myroslav Goncharuk-Khomyn (UKRAINE)

Ferranti WONG (UK)

Zeki AKKUS (TURKEY)

Michele CALLEA (ROME, ITALY)

Zelal ULKU (TURKEY)

Moschos A. PAPADOPOULOS (GREECE)

Lindawati S KUSDHANY (INDONESIA)

Yasemin YAVUZ (TURKEY)

Yuliya MAKEDONOVA (RUSSIA)

Nik Noriah Nik HUSSEIN (MALAYSIA)

## Editorial Board

Abdel Fattah BADAWI (EGYPT)

Abdurrahman ONEN (TURKEY)

Ahmet YALINKAYA (TURKEY)

Ahmet DAG (TURKEY)

Ali Al-ZAAG (IRAQ)

Ali BUMIN (TURKEY)

Ali FADEL (EGYPT)

Ali GUR (TURKEY)

Ali Kemal KADIROGLU (TURKEY)

Ali Riza ALPOZ (TURKEY)

Ali Riza Tunçdemir (TURKEY)

Allah Bakhsh HAAFIZ (USA)

Alpaslan TUZCU (TURKEY)

Alpen ORTUG (TURKEY)

Guvenc BASARAN (TURKEY)

Guvenc ERBIL (TURKEY)

Halimah AWANG (MALAYSIA)

Halit AKBAS (TURKEY)

Heloisa Fonseca MARAO (BRAZIL)

Hilal TURKER (TURKEY)

Huseyin ASLAN (TURKEY)

Igor BELYAEV (SWEDEN)

Ilhan INCI (ZURICH)

Ilker ETIKAN (TURKEY)

Isil TEKMEK (TURKEY)

Isin ULUKAPI (TURKEY)

Jalen DEVECIOGLU KAMA (TURKEY)

Kemal CIGDEM (TURKEY)

Nezahat AKPOLAT (TURKEY)

Nihal HAMAMCI (TURKEY)

Nik Noriah Nik HUSSEIN (MALAYSIA)

Nicola Pranno (ROME)

Nurten AKDENIZ (TURKEY)

Nurten ERDAL (TURKEY)

Orhan TACAR (TURKEY)

Ozant ONCAG (TURKEY)

Ozgur UZUN (TURKEY)

Ozkan ADIGUZEL (TURKEY)

Rafat Ali SIDDIQUI (PAKISTAN)

Refik ULKU (TURKEY)

Sabiha Zelal ULKU (TURKEY)

Sabri BATUN (TURKEY)

Armelia Sari WIDYARMAN (INDONESIA)	Kemal NAS (TURKEY)	Sadullah KAYA (TURKEY)
Ashish AGGARWAL (INDIA)	Kewal KRISHAN (INDIA)	Saul Martins PAIVA (BRAZIL)
Ayşe GUNAY (TURKEY)	King Nigel MARTYN(HONG KONG, CHINA)	Sedat AKDENİZ (TURKEY)
Aziz YASAN (TURKEY)	Kursat ER (TURKEY)	Seher GUNDUZ ARSLAN (TURKEY)
Awiruth KLAISIRI (THAILAND)	Levent ERDINC (TURKEY)	Selahattin ATMACA (TURKEY)
Balasubramanian MADHAN (INDIA)	Luca TESTARELLI (ROME)	Selahattin TEKES (TURKEY)
Benik HARUTUNYAN (ARMENIA)	Lucianne Cople MAIA (BRAZIL)	Serdar ERDINE (TURKEY)
Betul KARGUL (TURKEY)	Luciane Rezende COSTA (BRAZIL)	Serdar ONAT (TURKEY)
Betul URREHMAN (UAE)	Marri Sai ARCHANA (INDIA)	Sergio Adriane Bezerra DE MOURA (BRAZIL)
Bugra OZEN (TURKEY)	Manoj KUMAR (INDIA)	Serhan AKMAN (TURKEY)
Carlos Menezes AGUIAR (BRAZIL)	Marcelo Rodrigues AZENHA (BRAZIL)	Sertac PEKER (TURKEY)
Cemil SERT (TURKEY)	Marcia Cancado FIGUEIREDO (BRAZIL)	Seyed Amir Danesh Sani (USA)
Chiramana SANDEEP (INDIA)	Marco MONTANARI (ITALY)	Seyit Burhaneddin ZİNCİRCİOĞLU (TURKEY)
Christine Bettina STAUDT (SWITZERLAND)	Margaret TZAPHLIDOU (GREECE)	Shailesh LELE (INDIA)
Cihan AKGUL (TURKEY)	Maria Elisa Oliveira dos SANTOS (BRAZIL)	Sinerik N. AYRAPETIAN (ARMENIA)
Claudia DELLAVIA ( ITALY )	Medi GANIBEGOVIC (BOSNIA and HERZEGOVINA)	Smaragda KAVADIA (GREECE)
Diah Ayu MAHARANI (INDONESIA)	Mehmet DOGRU (TURKEY)	Sossani SIDIROPOULOU (GREECE)
Dinesh Rokaya (NEPAL)	Mehmet Emin ERDAL (TURKEY)	Stefano Di CARLO (ROME)
Edoardo BAUNER (ROMA)	Mehmet Sinan DOGAN (TURKEY)	Sunit Kr. JUREL (INDIA)
Emmanuel Joao N. Leal da SILVA (BRAZIL)	Mehmet Ünal (TURKEY)	Stephen D. SMITH (USA)
Emin Caner TUMEN (TURKEY)	Mehmet Zulkuf AKDAG (TURKEY)	Susumu TEREKAWA (JAPAN)
Emrullah BAHSI (TURKEY)	Meral ERDINC (TURKEY)	Suha TURKASLAN (TURKEY)
Ertunc Dayı (TURKEY)	Michele CALLEA (ITALY)	Suleyman DASDAG (TURKEY)
Fadel M. ALI (EGYPT)	Mohamed TREBAK (USA)	Taskin GURBUZ (TURKEY)
Fahinur ERTUGRUL (TURKEY)	Mohammad Khurshedd Alam (KSA)	Ufuk ALUCLU (TURKEY)
Feral OZTURK (TURKEY)	Mohammad SUHRON (INDONESIA)	Ugur KEKLIKCI (TURKEY)
Feridun BASAK (TURKEY)	Mohammed Mustahsen URREHMAN (UAE)	Xiong-Li YANG (CHINA)
Ferranti WONG (UNITED KINGDOM)	Moschos A. PAPAPOPOULOS (GREECE)	Vatan KAVAK (TURKEY)
Feyzi Çelik (TURKEY)	Mostaphazadeh AMROLLAH (IRAN)	Yasar YILDIRIM (TURKEY)
Feyzullah Uçmak (TURKEY)	M.S. Rami REDDY (INDIA)	Yasemin YAVUZ (TURKEY)
Figen SEYMEN (TURKEY)	Muhammad FAHIM (INDIA)	Yavuz SANISOGLU (TURKEY)
Filippo BATTELLI (ITALY)	Mukadder ATMACA (TURKEY)	Yu LEI (USA)
Filiz Acun KAYA (TURKEY)	Murat AKKUS (TURKEY)	Yuri LIMANSKI (UKRAINE)
Flavio Domingues Das NEVES (BRAZIL)	Murat SOKER (TURKEY)	Zafer C. CEHRELI (TURKEY)
Folakemi OREDUGBA (NIGERIA)	Mustafa KELLE (TURKEY)	Zeki AKKUS (TURKEY)
Francesca De Angelis (ITALY)	Mustafa ZORTUK (TURKEY)	Zeynep AYTEPE (TURKEY)
Gajanan Kiran KULKARNI (CANADA)	Muzeyyen YILDIRIM (TURKEY)	Zuhal KIRZIOGLU (TURKEY)
Gamze AREN (TURKEY)	Neval Berrin ARSERIM (TURKEY)	Zurab KOMETIANI (GEORGIA)
Gauri LELE (INDIA)		
Gonul OLMEZ (TURKEY)		
Gulsen YILMAZ (TURKEY)		

Gulten UNLU (TURKEY)

Design: TwTDizayn

[www.jidmr.com](http://www.jidmr.com)

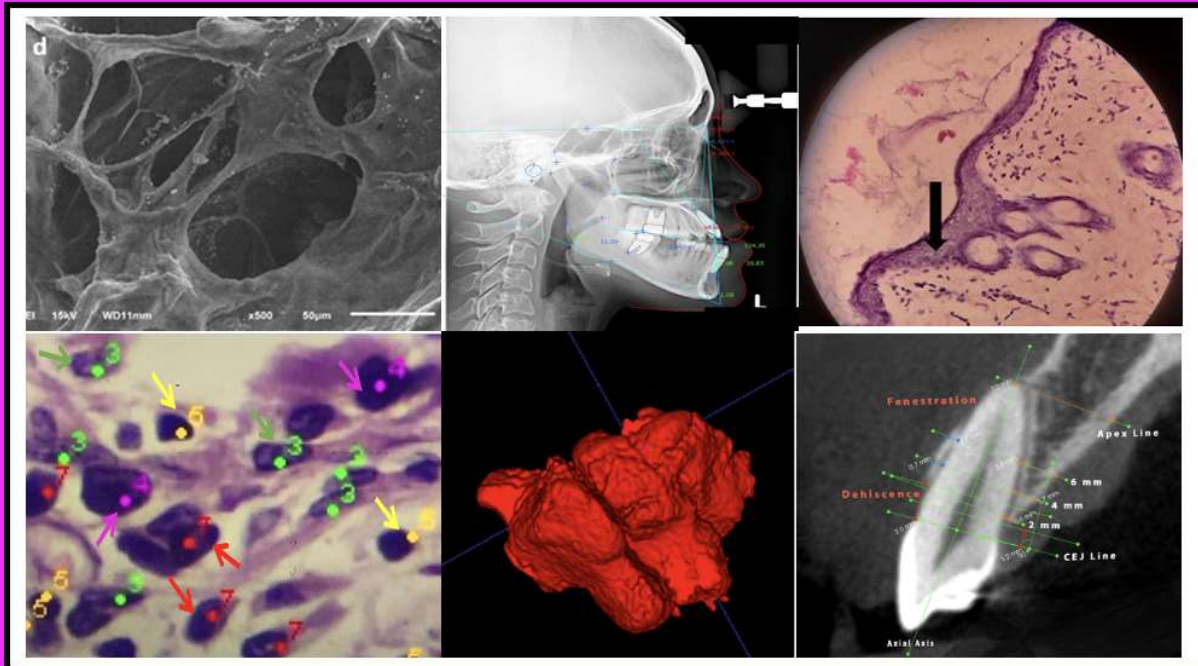
[www.journalofinternationaldentalandmedicalresearch.com](http://www.journalofinternationaldentalandmedicalresearch.com)





E-ISSN: 1309-100X

Journal of  
International  
Dental and Medical  
Research



2021 - Vol. 14 – No. 4

<http://www.jidmr.com>

**DENTISTRY**

- EXPERIMENTAL ARTICLE**
1. **Comparative evaluation of the remineralization potential of Theobromine and Fluoride containing dentifrices using Scanning Electron Microscopy with Energy Dispersive X-Ray Analysis: An in-vitro Study**  
Nithya Annie Thomas, Priya Shetty, Charisma Thimmaiah, Sowmya B. Shetty, Nimmy Sabu, Kavita Bekal Kripalani  
Pages 1314-1320
- EXPERIMENTAL ARTICLE**
2. **Attachment of Streptococcus Mutans to Intraoral Suture Materials: An in Vitro Study**  
Denta Aditya Prasetya, Poerwati Soetji Rahajoe, Bambang Dwirahardjo, Michael Haryadi Wibowo  
Pages 1321-1326
- EXPERIMENTAL ARTICLE**
3. **Erythrocyte Sedimentation Rate as an Alternative to C-Reactive Protein in Rheumatoid Arthritis Patients with Periodontitis**  
Anirudh B. Acharya, Ibbani Padakannaya, Srinath Thakur  
Pages 1327-1333
- EXPERIMENTAL ARTICLE**
4. **Effect of Platelet Rich Plasma Incorporated to Autologous Bone Graft on Collagen Production in vivo**  
Vera Julia1, Fitriana, Benny Sjariefsjah Latief, Lilies Dwi Sulistyani, Bambang Pontjo, Tri Isyani Tungga Dewi  
Pages 1334-1338
- EXPERIMENTAL ARTICLE**
5. **An Invitro Study to Evaluate and Compare the Effect of Surface Treatment of Implant Abutments on the Retentiveness of Three Commercially Available Provisional Cements**  
Ayesha Shaziya Jubapu, Brilvin Pinto  
Pages 1339-1350
- EXPERIMENTAL ARTICLE**
6. **Microvascular Activity from the Wound Healing Process in Wistar Rats Due to Administration of Anredera Cordifolia (Ten.) Steenis**  
Christian Khoswanto  
Pages 1351-1356
- EXPERIMENTAL ARTICLE**
7. **The Effect of Polyvinyl Alcohol on the Physico-Chemical Properties of Collagen-Chitosan Membranes**  
Agus Susanto, Ira Komara, Arief Cahyanto, Basril Abbas, Fajar Lukitowati, Yessy Warastuti  
Pages 1357-1362
- EXPERIMENTAL ARTICLE**
8. **Efficacy of Bidara Leaf (Ziziphus Mauritiana) Viscous Extract to Gingival Wound Healing in Wistar Rats**  
Mochammad Taha Ma'ruf, Putu Sulistiawati Dewi, Dewi Farida Nurlitasari  
Pages 1363-1372
- EXPERIMENTAL ARTICLE**
9. **Antibiofilm Efficacy of Myrmecodia Pendens Methanol Extract and NaOCl Against Enterococcus Faecalis ATCC 29212**  
Faisal Kuswandani, Mieke H. Satari, Ani M. Maskoen  
Pages 1373-1378
- EXPERIMENTAL ARTICLE**
10. **In Vitro Wound Healing Potential of Stem Extract of Spatholobus littoralis Hassk**  
Yessy Ariesanti, Wiwiek Poedjiastoeti, Komariah, Amalia Fauzana Wijaya  
Pages 1379-1385

**EXPERIMENTAL ARTICLE**

- 11. Osteoinduction Ability of Human Adipose-Derived Mesenchymal Stem Cell with Chitosan Scaffold Combination Towards Blood Serum Phosphorus Levels**

Dian Agustin Wahjuningrum, Nindya R A Marhendra, M. Roelianto, Ari Subiyanto, Irmaleny, Fery Setiawan, Syania E Febriyanti, Setyabudi, Tamara Yuanita, Swadheena Patro, Anuj Bhardwaj  
 Pages 1386-1393

**EXPERIMENTAL ARTICLE**

- 12. The Effect of Tooth-Brushing Activity, Temperature, and pH to Acrylic and Composite Resin Microplastic Release**

Jackson Dipankara, Joko Kusnoto, Rosalina Tjandrawinata, Rahmi Amtha  
 Pages 1394-1400

**EXPERIMENTAL ARTICLE**

- 13. Cellulose Fiber from Coconut Coir for Development of Dental Composite Filler**

Twı Agnita Cevanti, Nur Shiyama Purnama Sari, Steella Ilham Isnaini, Mahardika F. Rois, Heru Setyawan, Adioro Soetojo, Ira Widjiastuti  
 Pages 1401-1406

**EXPERIMENTAL ARTICLE**

- 14. Mefenamic Acid Induces Apoptosis in Oral Malignant Burkitt's lymphoma Through Caspase-3 and -9 Pathways Followed by Down-Regulation of Cox-2 and Overexpression of p27Kip-1**

Supriatno, Fauzi Adityawan, Faizal Dentawan Pritama, Muhammad Arindra Saka, Sartari Entin Yuletnawati, Faisal Fikri Hakim  
 Pages 1407-1412

**EXPERIMENTAL ARTICLE**

- 15. The Effect of the Application of (Garcinia mangostana L.) towards PDGF-B Expression on Human Gingival Fibroblast Cell Culture After Wound Healing Scratch Test Assay (In-Vitro Study)**

Felicia Laurens Lesmana, Andra Rizqiawan, Indra Mulyawan, Ni Putu Mira Sumarta, David B. Kamadjaja, Coen Pramono D, Tobiumei Kei, Gde Djodi Satria Rurus, Naura Athiyyah Sativa, Rozhaline Apriliany Fanddhy  
 Pages 1413-1418

**EXPERIMENTAL ARTICLE**

- 16. The Effects of Ag<sup>+</sup> Ion in Osteoblast Cell Proliferation (In Vitro Study)**

R. Aries Muharram, Coen Pramono D, Pratiwi Soesilawati, Muhammad Subhan Amir, Aisyah Rachmadani Putri Gofur, Ajeng Hayyuning Citrasari  
 Pages 1419-1424

**EXPERIMENTAL ARTICLE**

- 17. Physical Modification of Bovine Amniotic Membrane for Dental Application**

Octarina, Elly Munadzirah, Fathilah Abdul Razak  
 Pages 1425-1428

**EXPERIMENTAL ARTICLE**

- 18. Effects of Centella asiatica Leaves Extract on Dimethyl Benz(A) Anthracene (DMBA) Induced Oral Epithelial Dysplasia in Rats**

Ahyar Riza, Gostry Aldica Dohude, Anisa Fitri  
 Pages 1429-1434

**EXPERIMENTAL ARTICLE**

- 19. Spectroscopy Structure Analysis of Ellagic Acid and Calcium Phosphate**

Debby Saputera, Intan Nirwana, Michael Josef Kridanto Kamadjaja  
 Pages 1435-1441

## EXPERIMENTAL ARTICLE

- 20. The Effect of Titanium Oxide (TiO<sub>2</sub>) Nanoparticles Addition on Polymethyl Methacrylate Denture Base Impact Strength, Tensile Strength, and Hardness**

Sanggry Mutiara, Hubban Nasution, Ricca Chairunnisa, Kholidina Harahap, Sefty Aryani Harahap, Astrid Yudhit, Febby Revita Sari, Slamet Tarigan  
Pages 1442-1446

## EXPERIMENTAL ARTICLE

- 21. The Pattern of Collagen, Col1a, Bsp and Mmp-8 in Alveolar Bone Socket Post Tooth Extraction of Rattus Norvegicus Strain Wistar After Induced With Hydroxyapatite Bovine Tooth Graft**

Nanik Zubaidah, Yosefin Adventa, Dian Dwi Pratiwi, Latief Mooduto, Ernie Maduratna Setiawati, Sri Kunarti  
Pages 1447-1452

## EXPERIMENTAL ARTICLE

- 22. The Benefits of the Combination of Vitamin D3, K2 Supplements, and UV-B Exposure for Increasing Bone Density: A Simple Solution for Bone Health**

Sindy Cornelia Nelwan, Udijanto Tedjosongko, Satiti Kuntari, Daniel Haryono Utomo, Tania Saskianti, Mega Moeharyono Puteri, Devi Dharmawan, Yufita Fitriani, Pradita Agung Kurnia, Amalia Ramadhani Mufida, Nadhia Zahria Fajrin, Retno Pudji Rahayu, Nunthawan Nowwarote  
Pages 1453-1458

## EXPERIMENTAL ARTICLE

- 23. The Effect of Chitosan and Acrylate Acid Complex into Acrylic Resin as Denture Material Against Fibroblast and Inflammatory Cells**

Titik Ismiyati, Ananto Ali Alhasyimi, Widowati Siswomihardjo, Supriatno  
Pages 1459-1464

## EXPERIMENTAL ARTICLE

- 24. Comparison of the Effect of Calcium Hydroxide Combination with Cocoa Pod Husk Extract and Green Tea Extract on Fibroblast and Alp Activation**

Tamara Yuanita, Lailatun Tedja, Debby Suryani, Irma Drismayanti  
Pages 1465-1471

## CLINICAL ARTICLE

- 25. To assess the usefulness of the Mandibular Ramus in determining Age and Gender among Malaysians in digital OPGs**

Ranjana GARG, Tiew JACKY, Timothy Gan Hwa YUNG, Young Wen LI, Tengku Mariam Batrisyia Tengku BRAHANUDIN  
Pages 1472-1477

## CLINICAL ARTICLE

- 26. The Relationship Between Parenting Stress in Parents and Oral Health-Related Quality of Life (OHRQoL) Children with Down Syndrome**

Masayu Sesiliana, Willyanti Soewondo, Inne Suherna Sasmita  
Pages 1478-1484

## CLINICAL ARTICLE

- 27. Accuracy of Sphenoidal Sinus Morphometry in Forensic Identification Using Cone Beam Computed Tomography**

Asmaa T Uthman, Abdullah Alomar, Ali Almkhtar, Rama Jaber, Raneen Essale, Rifqa Abdulsalam, Samsam Warsame, Walid Shaaban Elsayed, Natheer H Al-Rawi  
Pages 1485-1491

## CLINICAL ARTICLE

- 28. Relationship Between the Satisfaction of Removable Denture Patients and Nutritional Status**

Rifka Dennisa, Lia Kartika Wulansari, Fakhrana Ariani Ayub  
Pages 1492-1497

TABLE OF CONTENTS / 2021; 14 (4)

## CLINICAL ARTICLE

- 29. Fruits and Vegetables: A Cost-effective Practical Solution in Periodontal Pre-Clinical Surgical Training for Postgraduate Students**  
Fouad H AL-Bayaty, MFH Hidayat, Farha Ariffin, Erni Noor, Mahyunah Masud,  
Muhammad Hilmi Bin Zainal Ariffin, Hafizul Izwan Mohd Zahari, Fara Azwin Adam  
Pages 1498-1502
- 30. Lifestyle as a Risk Factor of High Periodontitis Prevalence with and without Type 2 Diabetes Mellitus in Surabaya**  
Titiek Berniyanti, Retno Palupi, Dini Setiyowati, Aulia Rahmadhani, Dinda Novia, Novitasari Mira Afanda,  
Nadya Innasa Khairani, Annisa Zahra Nurlaili, Fidelia Kartikasari  
Pages 1503-1508
- 31. Effects of Sucking Exercise using Straws on Mouth Rinsing Ability in Children with Down syndrome**  
Megananda Hiranya Putri, Susi Sukmasari, Eliza Herijulianti, Hetty Anggrawati, Neneng Nurjanah,  
Arlette Suzy Setiawan  
Pages 1509-1516
- 32. Effect of Carbonate Apatite Membrane as Adjunctive Therapy of Scaling and Root Planing on Gingival Crevicular Fluid Matrix Metalloproteinase-8 in Chronic Periodontitis Patient**  
Ira Komara, Siti Sopiadin, Ina Hendiani, Nunung Rusminah, Agus Susanto  
Pages 1517-1522
- 33. Position of Unilateral / Bilateral Permanent Canine Impaction on the Prognosis of Treatment with KPG Index: 3D Cone Beam Computed Tomography Analysis**  
Nina Agustin Chrystinasari, Ida Bagus Narmada, Ari Triwardhani  
Pages 1523-1530
- 34. Development of the Indonesian version of the Oral Health Impact Profile in Edentulous Prosthodontic Patients**  
Muslita Indrasari, Lindawati S. Kusdhany, Diah Ayu Maharani, R. Irawati Ismail  
Pages 1531-1536
- 35. Correction of Gummy Smile using Botulinum Toxin**  
Awad Ashekhi, Maher Al Shayeb, Danyah Ashekhi, Amany Ghazy, Aiman Abu-fanas, Syed Kuduruthullah,  
Ahmed Taha, Ibrahim Taher  
Pages 1537-1541
- 36. Surface Electromyography Reveal Association between Masticatory Muscles with Malocclusion Class I And Class III Skeletal in Javanese Ethnic Patient**  
Dwi Rahmawati, I Gusti Aju Wahyu Ardani, Thalca hamid, Irina Fardhani, Haydar Taftazani,  
Alexander Patera Nugraha, Martha Kurnia Kusumawardani  
Pages 1542-1546
- 37. Factors Associated with Dental Attendance Among Indonesian Adults: A Cross-Sectional Study**  
Latifah Fitriani Rakhman, Atik Ramadhani, Diah Ayu Maharani  
Pages 1547-1551

TABLE OF CONTENTS / 2021; 14 (4)

- 38. Knowledge, Attitude, Practice Towards Plaque Disclosing Agent Among Dentists in West Java, Indonesia**  
Giannissah Fathina Fairuz, Siti Sopiati, Amaliya Amaliya  
Pages 1552-1560  
CLINICAL ARTICLE
- 39. Prevalence of Dehiscence and Fenestration on Incisors after Orthodontic Treatment in High-Angle Patients using Cone Beam Computed Tomography**  
Yoshua Christian Hendrik, Retno Widayati, Menik Priaminiarti, Miesje Karmiati Purwanegara  
Pages 1561-1568  
CLINICAL ARTICLE
- 40. Prevalence of Most Common Tongue Lesions Related to Degenerative Diseases in the Elderly**  
Adiastuti Endah Parmadiati, Diah Savitri Ernawati, Fatma Yasmin Mahdani, Nurina Febriyanti Ayuningtyas, Meircurius Dwi Condro Surboyo, Aulya Setyo Pratiwi, Riyan Iman Marsetyo, Candrika Ramya Inastu, Vint Erawati  
Pages 1569-1572  
CLINICAL ARTICLE
- 41. Associated Factors of Early Childhood Caries (ECC) Among 24–42-Month-Old-Children in Jakarta: A Cross-Sectional Study**  
Febriana Setiawati, Iwany Amalliah, Preticia, Atik Ramadhani, Diah Ayu Maharani  
Pages 1573-1579  
CLINICAL ARTICLE
- 42. Elements Affecting Toothbrushing Parenting among Mothers in Banjarbaru City**  
Widodo, R. Darmawan Setijanto, Taufan Bramantoro  
Pages 1580-1586  
CLINICAL ARTICLE
- 43. The First Case Report about Noninvasive Impression Taking in Orthodontic Patient with Epidermolysis Bullosa**  
Oleg Valovikov, Ellina Velichko, Svetlana Razumova, Olga Bait Said  
Pages 1587-1591  
CASE REPORT
- 44. Oral Hygiene, Periodontal Condition and Their Treatment Need of Teaching Faculty in Higher Schools**  
Sunitha.S, Aruna.G, Vidya Doddawad, Arunpriya Srinivasan  
Pages 1592-1598  
CASE REPORT
- 45. Dental Management of Severe Malocclusion and Syndromic Multiple Odontogenic Keratocysts**  
Nabeel Almotairy  
Pages 1599-1603  
CASE REPORT
- 46. Intraosseous Anesthesia of the Mandibular Molars: A Critical Literature Review**  
Emiliya Simeonova, Valeriya Aleksandrova, Svetlin Aleksandrov  
Pages 1604-1610  
REVIEW
- 47. Role of Salivary Nitric Oxide on Caries Status of Children with Down Syndrome**  
Nita Naomi, Tania Saskianti, Ardianti Maartrina Dewi, Barnabas Bonardo, Alit Rahma Estu, Brian Maulani  
Pages 1611-1616  
REVIEW

**TABLE OF CONTENTS / 2021; 14 (4)**

REVIEW

- 48. Minimally Invasive Posterior Full Crown Competitors: Onlays, Occlusal Veneers, Vonlays and Endocrowns: A Review and Proposed Classification**

Sherif Sultan, Hmoud Al Garni, Meshal Al Onazi, Kiran Gangi, Salah Al Otha, Fahad Al Ruwaili, Saif Al Anazi, Sultan Al Shammari, Abdul Aziz Fandi, Mostafa Fayad  
Pages 1617-1622

REVIEW

- 49. Periodontitis Affects Skeletal Muscle Metabolism Through an Increase in Proinflammatory Cytokines**

Risma Aprinda Kristanti, Taufan Bramantoro, Pratiwi Soesilawati, Erni Maduratna Setiawatie, Bambang Purwanto  
Pages 1623-1628

REVIEW

- 50. Dental Articulators**

Rawan Abu Zaghlan, Jamal Aqrabawi, Omar Al-Fatyan, Basmah AbuZaghllan  
Pages 1629-1638

REVIEW

- 51. Teachers' Role in Regular and Special Need Students' Oral Health: A Narrative Review**

Tania Saskianti, Mega Moeharyono Puteri, Barnabas Bonardo, Brian Maulani, Nita Naomi, Alit Rahma Estu  
Pages 1639-1647

REVIEW

- 52. Strategically Important Features of the Influence of Sodium Hypochlorite on the Mechanical Properties of Dentin: A Systematic Review**

Zurab Khabadze, Alexandra Kotelnikova, Mikhail Protsky, Oleg Mordanov, Ekaterina Faustova, Irina Nikolskaya, Shushanik Minosyan, Khadizhat Omarova, Ekaterina Shilyaeva, Daria Nazarova, Alena Kulikova  
Pages 1648-1655

REVIEW

- 53. Comparison of Screw- and Cement-Retained Dental Implant from Biological, Clinical, and Technical Complications: A Systematic Review**

Margaretha Elfridamanela Samosir, Nada Fairuzia Soadi, Sheila Indrisavira, Hubban Nasution  
Pages 1656-1663

REVIEW

- 54. Clinical Dental Risk Management: The Needs and Challenges**

Didin Mirandani, Taufan Bramantoro, Dini Setyowati  
Pages 1664-1666

**MEDICINE**

EXPERIMENTAL ARTICLE

- 55. Mangiferin Attenuates Doxorubicin-Induced Nephrotoxicity in Rats Through Reduction of Oxidative Stress**

W. Arozal, A.J. Barinda, E.R. Monayo, R. Aulia  
Pages 1667-1674

CLINICAL ARTICLE

- 56. Evaluation of 900 and 1800 Mhz Radiofrequency Radiation Emitted from Mobile Phones on Pregnant Women**

Hava Bektas, Suleyman Dasdag, Mehmet Selcuk Bektas  
Pages 1675-1683

TABLE OF CONTENTS / 2021; 14 (4)

- CLINICAL ARTICLE
- 57. Infrared Thermography as a Evaluation Metod an Athlete's Emotional Readiness**  
Kozhevnikova I. S., Anikina N.Yu., Pankov M. N., Plaksin V.A., Startseva L. F.  
Pages 1684-1687
- CLINICAL ARTICLE
- 58. Effect of Nutritional Literacy on Mother's Self Efficacy in Child Feeding (Effect of Nutritional Literacy on Mother's)**  
Maula Mar'atus Solikhah, Lita Heni Kusumawardani, Nurul Devi Ardiani, Annisa Cindy Nurul Afni, Atiek Murharyati<sup>1</sup>, Siti Nurjanah, Erinda Nur Pratiwi  
Pages 1688-1693
- CLINICAL ARTICLE
- 59. The Implementation of Theory of Planned Behavior in Identifying Behavioral Models of Nursing Documentation in "X" Hospital**  
Erna Dwi Wahyuni, Nursalam, Yulis Setiya Dewi, Amel Dawod Kamel  
Pages 1694-1700
- CLINICAL ARTICLE
- 60. Overview of Self-Care of Patients with Chronic Kidney Disease based on a Family Perspective**  
Virgianti Nur Faridah, Nursalam Nursalam, Ninuk Dian Kurniawati, Trijati Puspita Lestari, Nurul Hikmatul Qowi, Arifal Aris  
Pages 1701-1704
- CLINICAL ARTICLE
- 61. Factors Affecting Anemia Prevention Behavior in Pregnant Women based on Lawrence Green's Theory**  
Mira Triharini, Ayu Rahmawati, Aria Aulia Nastiti, Yulis Setiya Dewi, Smriti Kana Mani  
Pages 1705-1708
- CLINICAL ARTICLE
- 62. Cinematherapy-based Group Reminiscence on Older Adults' Quality of Life**  
Intan M. S. Batubara, Niken Y. Sari, Febriana S. Sari, Megan Eagle, Erlina Windyastuti, Erlyn Hapsari, Desy Widyastutik, Joko Santoso  
Pages 1709-1714
- CLINICAL ARTICLE
- 63. Comparison of Urogynecological Care in Hospitals Before and During the SARS CoV-2 Infection: The Case Approach in Dr. Soetomo Hospital Indonesia**  
Eighty Mardiyani Kurniawati, Hari Paraton, Gatut Hardiyanto, Azami Denas Azinar, Tri Hastono Setyo Hadi, Rizqy Rahmatyah, Nur Anisah Rahmawati  
Pages 1715-1721
- CLINICAL ARTICLE
- 64. Effectiveness of the "Emotion Recognition" Music Therapy Module in Schizophrenia Patients: A Quasi Experimental Study**  
Pangeran Ericson Arthur Siahaan, AAAA Kusumawardhani, Raden Irawati Ismail, Khamelia Malik  
Pages 1722-1726
- CLINICAL ARTICLE
- 65. Suboptimal Care on Maternal Near-Miss Cases: A Study from s Tertiary Referral Hospital in East Java, Indonesia**  
Hendy Hendarto, Hanifa Erlin Dharmayanti, Baksono Winardi, Budi Prasetyo, Muhammad Ardian Cahya Laksana, Muhammad Yusuf, Rizki Pranadyan, Pandu Hanindito Habibie, Bambang Trijanto, Erni Rosita Dewi, Alifina Izza, Mohammad Afzal Mahmood  
Pages 1727-1735



## CLINICAL ARTICLE

**66. Natural Killer Cell in Mild and Severe Systemic Lupus Erythematosus**

Wita Kartika Nurani, Gatot Soegiarto, Yuliasih  
Pages 1736-1742

## CASE REPORT

**67. Case Study: Health Workers' Perspective on Treatment of People with Post-Pasung Mental Disorder**

Febriana S. Sari, Novy H.C. Daulima, Ice Y. Wardani, Intan M.S. Batubara, Ariyanti, Heni N. Kusumawati, Wahyuningsih Safitri, Yunita Wulandari  
Pages 1743-1747

## REVIEW

**68. Diabetes and Metabolic Syndrome – Risk Factors for Covid-19 (literature review)**

Nartikoeva M.I., Dzampaeva Zh.V., Takoeva E.A.  
Pages 1748-1752

## REVIEW

**69. The Effectiveness of Tai Chi on Increasing Exercise Capacity and Quality of Life in Patients with Chronic Obstructive Pulmonary Disease: A Systematic review. (Tai Chi Effectiveness in COPD Patients)**

Yosin Herloheti Pella, Hasanudin, Yoyok Bakti Prasetyo, Joel Rey Ugsang Acob, Yulis Setiya Dewi  
Pages 1753-1759

## REVIEW

**70. Analysis Factor Affecting Continuous Learning Based Transformative Learning Theory and Digitalization to Improve Nurse Competencies: Literature Review**

Domingos Soares, Nursalam  
Pages 1760-1764

## REVIEW

**71. Energy-Drink and Adverse Kidney Function: A Review of Public Health Concern and Ethical Issue**

Ira Suarilah, Chiu-Chu Lin, Ika Yuni Widayawati  
Pages 1765-1770

## Natural Killer Cell in Mild and Severe Systemic Lupus Erythematosus

Wita Kartika Nurani<sup>1\*</sup>, Gatot Soegiarto<sup>1</sup>, Yuliasih<sup>2</sup>

1. Allergy and Clinical Immunology Division, Department of Internal Medicine, Dr. Soetomo General Hospital, Faculty of Medicine, Universitas Airlangga, Surabaya 60286, Indonesia.
2. Rheumatology Division, Department of Internal Medicine, Dr. Soetomo General Hospital, Faculty of Medicine, Universitas Airlangga, Surabaya 60286, Indonesia.

### Abstract

Systemic lupus erythematosus (SLE) is a chronic autoimmune disease characterized by acute relapses that affect numerous organ systems. The purpose of this study was to compare the number of natural killer (NK) cells and the proportion of activated NK cells in patients with mild and severe SLE based on CD69 expression.

The design of this study was cross-sectional. Patients with SLE in this study were patients who met four criteria out of 11 criteria for the 1997 ACR. Patients were examined for the number of NK cells, the percentage of activated NK cells, and SLE disease activity assessed by the Score Systemic Lupus Activity Measure (SLAM) index. All patients were female, 17 patients in the mild SLE group (47.2%) and 19 patients in the severe SLE group (52.8%). The mean age of the SLE group was  $30.76 \pm 10.146$  years, and the severe SLE group included  $27.89 \pm 7.527$  years. In this study, the mean body mass index (BMI) in the mild SLE group was  $20.859 \pm 2.3203$  kg/m<sup>2</sup>, while BMI in the severe SLE group was  $21.900 \pm 3.1213$  kg/m<sup>2</sup>. The mean number of NK cells in the mild SLE group ( $161.94 \pm 113.004$  cells/ $\mu$ L) was higher than the severe SLE group ( $63.16 \pm 54.851$  cell/ $\mu$ L) ( $p = 0.006$ ). The mean percentage of activated NK cells in the severe SLE group ( $4.00 \pm 3.45$  cells/ $\mu$ L) was higher than the mild SLE group ( $1.90 \pm 0.94$  cells/ $\mu$ L) ( $p = 0.141$ ).

There was a significant difference in the number and percentage of activated NK cells between the mild SLE group and the severe SLE group.

**Clinical article (J Int Dent Med Res 2021; 14(4): 1736-1742)**

**Keywords:** Systemic lupus erythematosus, NK cell, autoimmune, immunology.

**Received date:** 04 August 2021

**Accept date:** 25 October 2021

### Introduction

Systemic lupus erythematosus (SLE) is a chronic autoimmune disease with acute periodic recurrences affecting multiple organ systems, characterized by loss of tolerance to nucleic acids, and has a wide variety of clinical manifestations, leading to potentially life-threatening complications.<sup>1-3</sup> SLE is well known as a disease characterized by the formation of autoantibodies. Subsequent studies have shown that SLE also can affect the innate and adaptive

immune system. The latest study on pathogenesis of SLE have shown a formation of Neutrophil Extracellular Trap (NET), Interferon (IFN) signatures, changes in Dendritic Cell (DC), changes in T cells, and changes in Natural Killer (NK) cells.<sup>4,5</sup> NK cells are lymphocytes in innate immune system that has a contribution to autoimmune diseases.<sup>6</sup> Currently, there have been several studies studying the effect of SLE disease activity on NK cell counts and NK cell cytotoxic activity,<sup>7-9</sup> but the results are still controversial.

Recent studies on the pathogenesis of SLE have reported the presence of an IFN signature and also NET. The presence of NET will cause more antigen presentation so that excessive autoantibodies are formed, and immune complexes are deposited in various body tissues, which causes disease activity to worsen. This is due to the reduced role of NK cells as immunoregulators due to the influence of IFN. SLE patients show differences in clinical

#### \*Corresponding author:

Wita Kartika Nurani, MD  
Allergy and Clinical Immunology Division, Department of Internal Medicine, Dr. Soetomo General Hospital, Faculty of Medicine, Universitas Airlangga, Surabaya 60286, Indonesia  
Jalan Mayjend Prof. Dr. Moestopo No. 6-8  
Surabaya 60286, Indonesia.  
E-mail: [witakartikanurani@gmail.com](mailto:witakartikanurani@gmail.com)

manifestations or disease activity due to the molecular signature that causes the IFN signature.<sup>10-13</sup> This interferon signature and NET causes inflammation in various organs due to immune complex activation because the presence of NET will form many autoantigens.<sup>5,14-16</sup>

NET causes the number and function of NK cells to decrease, which causes impaired immune system regulation related to disease activity.<sup>6-9,15,17</sup> Previous studies reported that a decrease in the number of NK cells was not associated with SLE disease activity. The different results of this study were due to differences in the activity parameters and the number of NK cells used.<sup>18-20</sup>

The problems in SLE patients cannot be underestimated. Until now, the mortality rate for SLE is still relatively high. The incidence of SLE worldwide ranges from 0.3–23.7 per 100,000 people per year, while the prevalence of SLE ranges from 6.5–178 per 100,000 population. Data on SLE sufferers in Indonesia have not been collected integratively. However, based on the Data and Information Center of the Ministry of Health of the Republic of Indonesia in 2017, it is estimated that the prevalence of SLE in Indonesia is 0.5% of the total population or around 1,250,000 patients.<sup>21,22</sup>

The role of NK cells in the pathogenesis of SLE is widely studied nowadays since it is believed that variations in NK cell deficiency are related to SLE. This study is intended to compare the number and percentage of activated NK cells in mild and severe SLE.

## Materials and methods

This is analytic observational study with a cross-sectional research design. The study location is in the Inpatient and Outpatient Installation of Dr. Soetomo Hospital, Surabaya, Indonesia, from October 2019 to January 2020. The population of this study was all patients diagnosed with SLE based on the criteria of the 1997 American College Rheumatology (ACR) in the Inpatient and Outpatient Installation of Dr. Soetomo Hospital, Surabaya, Indonesia.

### Sample

The sample in this study was part of all SLE patients in the Inpatient and Outpatient Installation of Dr. Soetomo Hospital, Surabaya, who met the inclusion criteria, and no exclusion

criteria were found. The inclusion criteria of this study were 16-50 years old, new SLE patients (who had not received therapy) who met the 1997 criteria clinically, laboratories and radiologists in inpatients, and SLE patients with a minimum length of calm for one year in an outpatient installation. In comparison, the exclusion criteria were SLE patients who overlapped with other connective tissue diseases (scleroderma, rheumatoid arthritis, dermatomyositis), people with diabetes mellitus, and who had a history of or were suffering a malignancy. The minimum total sample size in this study is calculated based on the following formula:

$$N = \frac{2 \times \sigma^2 \times (Z\alpha + Z\beta)^2}{(\mu_1 - \mu_2)^2}$$

The sample size required for each group based on the above calculation is 9.6, rounded off to 10 people. Thus, the minimum sample size is 20 people. Sampling was done by consecutive sampling from SLE patients to obtain a predetermined large number of samples.

Patients with SLE in this study were patients who met four criteria out of 11 criteria for the 1997 ACR. Samples were obtained from inpatient and outpatient installations. The immunological tests measured in this study were ANA and anti-double-stranded deoxy nucleic acid (anti-dsDNA). This was classified into 3 levels, namely negative (<20 units/ml), moderate positive (20-60 units/ml), strong positive (>60 units/ml), measured by the ANA hybrid method. Anti ds-DNA was classified into 4 levels, namely negative (<92.6 WHO units/ml), borderline (92.6–138.9 WHO units/ml), moderate positive (139.9–370 WHO units/ml), strong positive (>370.4 WHO unit/ml), measured by the Enzyme Immuno Assay (EIA) titer method. The examination of the number of NK cells was also carried out at the Clinical Pathology Laboratory, Dr. Soetomo Hospital, Surabaya, Indonesia, expressed in units of cells/μL, while the percentage of NK cells to the number of lymphocytes is displayed in a ratio scale.

In this study, the percentage of activated NK cell is measured based on CD69 expression. The examination was carried out in the calibrated laboratory of Clinical Pathology at Dr. Soetomo Hospital, Surabaya. The variable percentage of

activated NK cells will appear as a ratio scale. While SLE disease activity was assessed using the Score Systemic Lupus Activity Measure (SLAM) index. This scoring system assigns a score of 0–3 for each parameter. The total score value ranges from 0 to 86. The meaning of this score is that if the score is higher, the degree of disease will be more active or severe.<sup>23</sup> This variable is a nominal scale with mild and severe categories. SLE was classified into mild SLE (SLAM Score 0-19) and severe SLE (SLAM Score >20).

### Data analysis

Data processing was performed using the IBM® SPSS® version 25 programme. Data were analyzed using descriptive statistics and presented in the form of a frequency distribution table. Statistical analysis of the difference in the number of NK cells and the percentage counting of activated NK cells between the two subject groups were carried out. Test data distribution was done using Shapiro Wilk, where if  $p > 0.05$  indicates normal data distribution. A comparative test for 2 sample groups was also conducted, namely two independent samples of the non-parametric test.

## Results

### General Characteristics of Research Subjects

This study took a sample of 36 patients in outpatient and inpatient units at the Department of Internal Medicine, Dr. Soetomo Hospital, Surabaya. The study subjects were divided into two groups: the mild SLE group (low SLAM) and the severe SLE group (high SLAM). All subjects of this study were female. The age group for mild SLE included a mean age of  $30.76 \pm 10.15$  years, with the youngest age being 17 years and the oldest being 47 years. For the severe SLE group, the mean age was  $27.89 \pm 7.52$  years, with the youngest age being 19 years and the oldest being 47 years old. The mean Body Mass Index (BMI) in the mild SLE group was  $20.86 \pm 2.32$  kg/m<sup>2</sup>, with the lowest BMI was 17.5 kg/m<sup>2</sup> and the highest BMI was 22.5 kg/m<sup>2</sup>. Meanwhile, BMI in the severe SLE group had a mean value of  $21.90 \pm 3.12$  kg/m<sup>2</sup> with the lowest value of 16.8 kg/m<sup>2</sup> and the highest value of 27 kg/m<sup>2</sup>.

Table 1 displays the laboratories parameter of subjects. The mean random blood glucose (RBG) was  $89.71 \pm 22.66$  mg/dL for the

mild SLE group and  $115.95 \pm 30.74$  mg/dL for the severe SLE group. Sequentially from mild SLE to severe SLE, the mean erythrocyte sedimentation rate (ESR) included  $35.47 \pm 19.88$  and  $35.74 \pm 24.24$ . The mean CRP levels were  $0.32 \pm 0.28$  for the mild SLE group and  $3.98 \pm 4.33$  for the severe SLE group. The complement test showed that the mean level of C3 for the mild SLE group was  $73.54 \pm 28.29$ , and the severe SLE group was  $44.28 \pm 34.79$ . Meanwhile, the mean C4 level for the mild SLE group was  $25.61 \pm 12.08$ , and the severe SLE group was  $20.66 \pm 21.39$ .

Characteristics	Mild SLE (n=17)	Severe SLE (n=19)
<b>Hemoglobin (g/dL)</b>		
Mean ± SD	11.80 ± 1.72	8.11 ± 3.14
Median (range)	12.10 (8.8-14.1)	8.70 (2.3-14.8)
<b>Leukosit (cell/μL)</b>		
Mean ± SD	6814.71 ± 2145.49	8190.00 ± 5029.40
Median (range)	7210.00 (3390-11290)	7930.00 (2420-21990)
<b>Limfosit (cell/μL)</b>		
Mean ± SD	1631.18 ± 847.14	1053.16 ± 538.68
Median (range)	1800.00 (240-3300)	1200.00 (270-1960)
<b>Trombosit (cell/μL)</b>		
Mean ± SD	306000.00 ± 75790.83	167368.42 ± 116779.09
Median (range)	285000 (188000-486000)	139000 (6000-458000)
<b>Random Blood Glucose (mg/dL)</b>		
Mean ± SD	89.71 ± 22.66	115.95 ± 30.74
Median (range)	91.00 (21-136)	113.00 (77-196)
<b>LED</b>		
Mean ± SD	35.47 ± 19.88	35.74 ± 24.24
Median (range)	34.00 (5-72)	33.00 (2-84)
<b>CRP</b>		
Mean ± SD	0.32 ± 0.28	3.98 ± 4.33
Median (range)	0.20 (0.1-0.9)	2.00 (0.0-14.0)
<b>C3</b>		
Mean ± SD	73.54 ± 28.29	44.28 ± 34.79
Median (range)	82.00 (19.0-120.0)	33.80 (16.4-144.0)
<b>C4</b>		
Mean ± SD	25.61 ± 12.08	20.66 ± 21.39
Median (range)	27.20 (6.0-47.5)	15.70 (3.0-90.6)
<b>SLAM Score</b>		
Mean	4.24 ± 4.87	26.26 ± 4.82
Median (range)	2.00 (1-19)	24.00 (20-36)

**Table 1.** Laboratories Parameter of Subjects.

SLE: Systemic lupus erythematosus; ESR: Erythrocyte sedimentation rate; CRP: C-reactive protein; SLAM: Systemic Lupus Activity Measure.

The examination of the number of NK cells in each group of mild and severe SLE is shown in Table 2. The average number of NK cells in the mild SLE group was higher than the average number of NK cells in the severe SLE group. The lowest number of NK cells in the mild

SLE group was 7, while the highest was 388. The lowest number of NK cells in the severe SLE group was 10, while the highest was 222. The range of minimum and maximum values in both groups was also quite large, as indicated by the standard values. The very high deviation was 113.00 in patients with mild SLE scores and 54.85 in patients with severe SLE.

Group	N	□□□□□□□□□□ (cells/μL)	□□□□□□□□□□ (cells/μL)
Mild SLE	17	161.94 ± 113.00	140.00
Severe SLE	19	63.16 ± 54.85	54.851

**Table 2.** Number of NK Cells in mild and severe SLE. SLE: Systemic lupus erythematosus.

**Percentage of activated NK cells in mild and severe SLE**

The examination of the percentage of activated NK cells in each group of mild and severe SLE is shown in Table 3. The average percentage of activated NK cells in the severe SLE group was higher than that of activated NK cells in the mild SLE group. The lowest percentage of activated NK cells was 0.55 in the mild SLE group, and the highest percentage of NK cells was in the severe SLE group at 13.25. The range of minimum and maximum values in both groups was also quite large, indicated by a very high standard deviation value, namely 0.94 in patients with mild SLE scores and 3.45 in patients with severe SLE scores.

Group	N	Mean ± SD (cells/μL)	Median (cells/μL)
Mild SLE	17	1.90 ± 0.94	1.90
Severe SLE	19	4.00 ± 3.45	2.21

**Table 3.** Percentage of activated NK cells on mild and severe SLE.

SLE: Systemic lupus erythematosus.

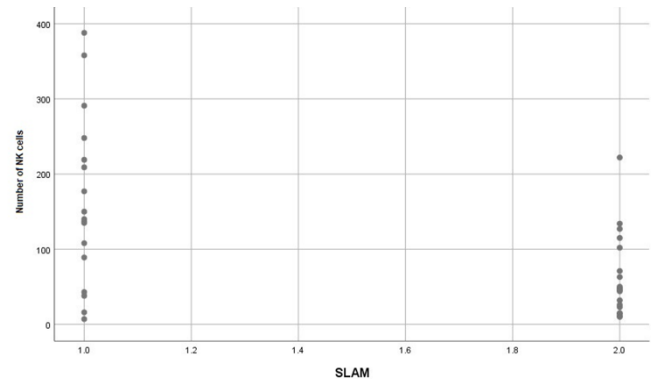
**Research Data Normality Test**

Examination of the distribution of NK cells and the percentage of activated NK cells in SLE patients was carried out using the Shapiro Wilk method. Based on the Shapiro Wilk test results for the variable number of NK cells and the percentage of activated NK cells in each sample group, the resulting p-value is 0.46; 0.01; 0.09; 0.00; which means normally distributed.

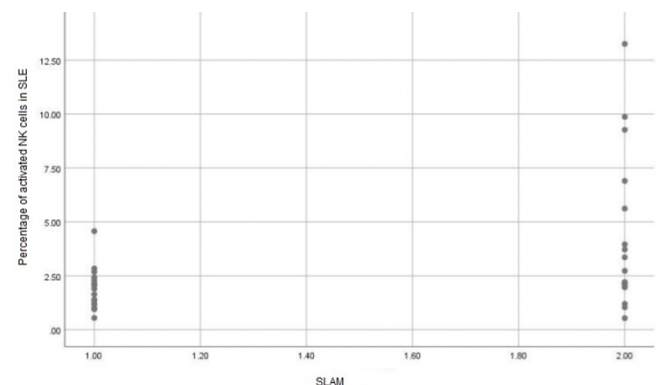
**Comparative test comparison of the number of NK cells for each SLE group**

The results of the comparative test for the mean number of NK cells in patients with mild SLE (161.94 ± 113.00 cells/μL) and severe SLE (63.16 ± 54.85 cells/μL) obtained a p-value of

0.006. It can be concluded that there is a significant difference in the number of NK cells in the mild and severe SLE groups. The mean value of the number of NK cells was higher in the mild SLE group than in the severe SLE group, which indicated a negative relationship between the SLAM score of SLE and the number of NK cells, as illustrated in the scatter diagram in Figure 1.



**Figure 1.** Scatter diagram comparing the number of NK cells with the SLAM score.  
 Note: 1.0 = mild SLE, 2.0 = severe SLE.



**Figure 2.** Scatter diagram comparing the percentage of activated NK cells in SLE.  
 Note: 1.0 = mild SLE, 2.0 = severe SLE.

**Comparative test of the percentage of activated NK cells in each group**

The results of the comparison test of the percentage of NK cells in patients with mild SLE (1.90 ± 0.94 cells/μL) and severe SLE (4.00 ± 3.45 cells/μL) obtained a p-value of 0.032. Consequently, it can be concluded that there was significant difference in the percentage of activated NK cells in SLE patients in the mild and severe SLAM groups. The mean value of the percentage of activated NK cells was greater in the severe SLE group than the mild SLE group, indicating a positive relationship between the

SLAM score of SLE and the percentage of NK cells, as illustrated in the scatter diagram in Figure 2.

## Discussion

The results of this study suggested that the number of NK cells in the mild and severe SLE groups was significantly different. This study also tested the correlation between mild SLE scores and severe SLE scores with the number of NK cells using a scatter diagram showing the direction of linear and negative correlation. This means that the lower the SLAM score, the higher the number of NK cells. According to the comparison analysis, both groups had a significant decrease in NK cells. This is consistent with the theory that the more active SLE disease, the more NK cells undergo apoptosis. This causes autoantigens' availability that triggers more intense inflammation, which is reflected in the activity of SLE disease. Additionally, IFN- $\alpha$  released by plasmacytoid (p) DC causes cell death in individuals with active SLE as a result of circulating NK cell activation, ultimately contributing to the loss of circulating NK cells. A recent study suggested that CD56<sup>bright</sup> NK cells might contribute to the pathogenesis of SLE. Serum IL-15 levels are elevated in SLE patients, especially those with active SLE.<sup>24,25</sup> Meanwhile, in SLE patients, an increase in peripheral blood Ki67 + CD56<sup>bright</sup> NK cells was significantly associated with an increase in serum IL-15 clinical severity and active nephritis.<sup>26</sup>

This study discovered that severe SLE patients had a higher percentage of activated NK cells than those with mild SLE based on CD69 expression. In addition, the scatter diagram shows that the higher the SLAM score, the higher the percentage of activated NK cells. The percentage of activated NK cells in the peripheral circulation is not same in the target tissue of the inflamed organ. Many NK cells in the periphery go to the tissue by releasing cytokines and chemokines that aim to control inflammation, but in tissues that have experienced inflammation due to the presence of NK cells, it turns out that the tissue will experience more intense inflammation so that the tissue cells will be more numerous which is damaged and causes spreading epitope, which explains the worsening of organ function disorders or the emergence of inflammation in other organs.<sup>27,28</sup>

Due to the interactions between chemokines and their receptors, NK cells are rapidly attracted from the peripheral circulation to the wounded tissue during pathological situations, such as inflammation.<sup>29,30</sup> After reaching at the site of inflammation, NK cells are activated to carry out their functional functions. Activation of NK cells can occur in response to a variety of different cues. These include signals transmitted by multiple NK cell activating receptors in response to the recognition of specific ligands expressed on tumor cells, or signals generated in response to stimulation via toll-like receptors (TLRs) that are constitutively expressed on NK cells and enable them to react to pathogen-derived products.<sup>31,32</sup> Additionally, NK cells can be activated via cytokines released by other cell types. Indeed, while NK cells can recognize altered cells directly, recent research has showed that the microenvironment and interactions with other immune cells, particularly DCs, can play a significant role in ensuring proper NK cell priming. For instance, the synthesis of cytokines (such as IL-12) by activated DCs augments NK cell proliferation, IFN production, and antitumor cytotoxicity.<sup>33</sup>

The majority of research on the role of NK cells in SLE has been conducted on peripheral blood, but little is known about NK cell function in the target tissue. Recent studies using the mouse SLE model have shown that NK cells infiltrate the kidney in an active disease state, which in this case, due to the influence of the microenvironment, the NK cells in the tissue will be activated and cause inflammation in lupus nephritis.<sup>6</sup>

Several further investigations have established that NK cells have a role in the pathogenesis of SLE. Experiments in rats have shown that NK cell deficiency triggers the autoimmune disease.<sup>34</sup> Subsequent studies observed the cytotoxic activity and cytokine profile of NK cells in the pathogenesis of SLE. Increased cytotoxicity and pro-inflammatory phenotype of NK cells are correlated with changes in cytotoxic activity in NK cells, including downregulation of CD3 $\alpha$  expression in SLE patients accompanied by increased caspase-3 activity compared to healthy controls, resulting in downregulation of CD3 $\alpha$  expression in cells which are pro-inflammatory phenotypes.<sup>35</sup> Other studies have also shown changes in the phenotype, distribution, and function of NK cells

in SLE. The proportion of NK cells, namely CD56<sup>dim</sup> NK cells, was lower, but CD56<sup>bright</sup> NK cells were higher in the peripheral blood of SLE patients when compared to healthy controls.<sup>6,15</sup> As is well known, NK-dimmed CD56 NK cells in active SLE patients exhibit increased IFN- $\gamma$  production and exhibit an active phenotype in the presence of increased activating receptors (e.g., NKp44, NKp46, and CD69) and decreased CD158a/h/g expression.<sup>36</sup> A decrease in the number of circulating CD56<sup>dim</sup> NK cells in SLE patients can be related to the rapid migration of CD56<sup>dim</sup> NK cells from peripheral circulation to target organs, such as the kidneys, resulting in local tissue damage. Numerous factors contribute to CD56<sup>dim</sup> NK cell migration, including increased expression of NKG2D ligands, such as ribonucleic acid export (RAE)-1 and UL16 binding in mouse transcript-like protein (MULT)-1, CD226 ligands (e.g., CD112 and CD115), proinflammatory cytokines (e.g., TNF- $\alpha$ ), and chemoattractant chemokines, for example, the C-X3-C1igan-patterned chemokine (CX3CL) in kidney tissue that contributes to CD56<sup>dim</sup> NK cell migration. Migratory NK cells have also been observed in animal models of SLE, in which circulating DX5 + NK cells (mostly CD226 +) infiltrate rat kidneys and are responsible for the kidney injury observed in SLE.<sup>37,38</sup>

Increased IL-15 levels in SLE are associated with increased type I IFN production, which activates DCs; moreover, IL-15 promotes Ki67 expression on NK cells, stimulating NK cell proliferation and contributing to the pathogenesis of SLE. The precise mechanisms by which CD56<sup>bright</sup> NK cells induce SLE or cause tissue harm, however, remain unknown. The inflamed tissue is expected to recruit NK cells and alter their effector function by transforming the phenotypic of CD56<sup>bright</sup> NK cells, which should have low cytotoxicity, to CD56<sup>bright</sup> cytotoxicity via an unknown mechanism.<sup>31</sup>

This research has several limitations. First, this study used a cross-sectional design to measure the number of NK cells, and the percentage of activated NK cells was only done once. Second, the exclusion criteria in this study were only based on anamnesis, physical examination, and simple laboratory results. Third, the difficulty in controlling the confounding variables of the study, including the drugs used and the duration of suffering from SLE. Fourth, NK cell measurements were not differentiated in

a subset of CD56<sup>dim</sup> NK cells and CD56<sup>bright</sup> NK cells. Fifth, the measurement of the percentage of activated NK cells based on CD69<sup>+</sup> expression was only carried out at baseline without any in vitro stimulation.

## Conclusions

There was a substantial difference in the number of NK cells and the percentage of activated NK cells between mild SLE group and severe SLE group based on CD69 expression.

## Declaration of Interest

The authors declare no conflict of interest.

## References

1. Pirone C, Mendoza-Pinto C, van der Windt DA, Parker B, O Sullivan M, Bruce IN. Predictive and prognostic factors influencing outcomes of rituximab therapy in systemic lupus erythematosus (SLE): A systematic review. *Semin Arthritis Rheum.* 2017;47(3):384–96.
2. Flournoy-Floyd M, Ortiz K, Egede L, Oates JC, Faith TD, Williams EM. "We Would Still Find Things to Talk About": Assessment of Mentor Perspectives in a Systemic Lupus Erythematosus Intervention to Improve Disease Self-Management, Empowering SLE Patients. *J Natl Med Assoc.* 2018;110(2):182–9.
3. Khabadze ZS, Blokhina A V, Mustafaeva RS, Balashova ME, Abdulkerimova SM, Bakaev Y, et al. Temporomandibular joint in systemic lupus erythematosus: Literature review. *J Int Dent Med Res.* 2019;12(2):727–32.
4. Ganguly D, Haak S, Sisirak V, Reizis B. The role of dendritic cells in autoimmunity. *Nat Rev Immunol.* 2013/07/05. 2013;13(8):566–77.
5. Delgado-Rizo V, Martínez-Guzmán M, Iñiguez-Gutierrez L, García-Orozco A, Alvarado-Navarro A, Fafutis-Morris M. Neutrophil extracellular traps and its implications in inflammation: an overview. *Front Immunol.* 2017;8(81):1–20.
6. Spada R, Rojas JM, Barber DF. Recent findings on the role of natural killer cells in the pathogenesis of systemic lupus erythematosus. *J Leukoc Biol.* 2015;98(4):479–87.
7. Schepis D, Gunnarsson I, Eloranta M-L, Lampa J, Jacobson SH, Kärre K, et al. Increased proportion of CD56<sup>bright</sup> natural killer cells in active and inactive systemic lupus erythematosus. *Immunology.* 2009;126(1):140–6.
8. Park Y-W, Kee S-J, Cho Y-N, Lee E-H, Lee H-Y, Kim E-M, et al. Impaired differentiation and cytotoxicity of natural killer cells in systemic lupus erythematosus. *Arthritis Rheum.* 2009;60(6):1753–63.
9. Zahran AM, Abdel-Rahim MH, Elsayh KI, Hassanien MM, Mahran SA, Hetta HF. Natural Killer and Natural Killer T Cells in Juvenile Systemic Lupus Erythematosus: Relation to Disease Activity and Progression. *Arch Immunol Ther Exp (Warsz).* 2019 Jun;67(3):161–9.
10. Baechler EC, Batliwalla FM, Karypis G, Gaffney PM, Ortmann WA, Espe KJ, et al. Interferon-inducible gene expression signature in peripheral blood cells of patients with severe lupus. *Proc Natl Acad Sci U S A.* 2003;100(5):2610–5.
11. Bennett L, Palucka AK, Arce E, Cantrell V, Borvak J, Banchereau J, et al. Interferon and granulopoiesis signatures in systemic lupus erythematosus blood. *J Exp Med.* 2003;197(6):711–23.

12. Nzeusseu Toukap A, Galant C, Theate I, Maudoux AL, Lories RJJ, Houssiau FA, et al. Identification of distinct gene expression profiles in the synovium of patients with systemic lupus erythematosus. *Arthritis Rheum.* 2007;56(5):1579–88.
13. Crow MK. Type I interferon in organ-targeted autoimmune and inflammatory diseases. *Arthritis Res Ther.* 2010;12(Suppl 1):S5.
14. Klarquist J, Zhou Z, Shen N, Janssen EM. Dendritic Cells in Systemic Lupus Erythematosus: From Pathogenic Players to Therapeutic Tools. *Mediators Inflamm.* 2016;2016(2016):5045248.
15. Henriques A, Teixeira L, Inês L, Carvalheiro T, Gonçalves A, Martinho A, et al. NK cells dysfunction in systemic lupus erythematosus: relation to disease activity. *Clin Rheumatol.* 2013 Jun;32(6):805–13.
16. Garcia-Romo GS, Caielli S, Vega B, Connolly J, Allantaz F, Xu Z, et al. Netting neutrophils are major inducers of type I IFN production in pediatric systemic lupus erythematosus. *Sci Transl Med.* 2011;3(73):73ra20-73ra20.
17. Green MRJ, Kennell ASM, Larche MJ, Seifert MH, Isenberg DA, Salaman MR. Natural killer cell activity in families of patients with systemic lupus erythematosus: demonstration of a killing defect in patients. *Clin Exp Immunol.* 2005;141(1):165–73.
18. Oshimi K, Gonda N, Sumiya M, Kano S. Effects of corticosteroids on natural killer cell activity in systemic lupus erythematosus. *Clin Exp Immunol.* 1980 Apr;40(1):83–8.
19. Hervier B, Beziat V, Haroche J, Mathian A, Lebon P, Ghillani-Dalbin P, et al. Phenotype and function of natural killer cells in systemic lupus erythematosus: excess interferon- $\gamma$  production in patients with active disease. *Arthritis Rheum.* 2011;63(6):1698–706.
20. Erkeller-Yuksel FM, Lydyard PM, Isenberg DA. Lack of NK cells in lupus patients with renal involvement. *Lupus.* 1997;6(9):708–12.
21. Pons-Estel GJ, Ugarte-Gil MF, Alarcón GS. Epidemiology of systemic lupus erythematosus. *Expert Rev Clin Immunol.* 2017;13(8):799–814.
22. Indonesian Ministry of Health. InfoDATIN Hipertensi. Jakarta; 2017.
23. Romero-Diaz J, Isenberg D, Ramsey-Goldman R. Measures of adult systemic lupus erythematosus: updated version of British Isles Lupus Assessment Group (BILAG 2004), European Consensus Lupus Activity Measurements (ECLAM), Systemic Lupus Activity Measure, Revised (SLAM-R), Systemic Lupus Activity Quest. *Arthritis Care Res (Hoboken).* 2011;63 Suppl 1(0 11):S37-46.
24. Lin S-J, Kuo M-L, Hsiao H-S, Lee P-T, Chen J-Y, Huang J-L. Activating and inhibitory receptors on natural killer cells in patients with systemic lupus erythematosus-regulation with interleukin-15. *PLoS One.* 2017;12(10):e0186223.
25. Lin H, Sohn J, Shen H, Langhans MT, Tuan RS. Bone marrow mesenchymal stem cells: Aging and tissue engineering applications to enhance bone healing. *Biomaterials.* 2019;203:96–110.
26. Hudspeth K, Wang S, Wang J, Rahman S, Smith MA, Casey KA, et al. Natural killer cell expression of Ki67 is associated with elevated serum IL-15, disease activity and nephritis in systemic lupus erythematosus. *Clin Exp Immunol.* 2019;196(2):226–36.
27. Gross CC, Schulte-Mecklenbeck A, Rünzi A, Kuhlmann T, Posevitz-Fejfar A, Schwab N, et al. Impaired NK-mediated regulation of T-cell activity in multiple sclerosis is reconstituted by IL-2 receptor modulation. *Proc Natl Acad Sci U S A.* 2016 May;113(21):E2973-82.
28. Liu M, Liang S, Zhang C. NK Cells in Autoimmune Diseases: Protective or Pathogenic? *Front Immunol.* 2021;12:701.
29. Parolini S, Santoro A, Marcenaro E, Luini W, Massardi L, Facchetti F, et al. The role of chemerin in the colocalization of NK and dendritic cell subsets into inflamed tissues. *Blood.* 2007;109(9):3625–32.
30. Moretta A. Natural killer cells and dendritic cells: rendezvous in abused tissues. *Nat Rev Immunol.* 2002;2(12):957–65.
31. Pesce S, Moretta L, Moretta A, Marcenaro E. Human NK Cell Subsets Redistribution in Pathological Conditions: A Role for CCR7 Receptor. *Front Immunol.* 2016;7:414.
32. Agaugué S, Marcenaro E, Ferranti B, Moretta L, Moretta A. Human natural killer cells exposed to IL-2, IL-12, IL-18, or IL-4 differently modulate priming of naive T cells by monocyte-derived dendritic cells. *Blood.* 2008;112(5):1776–83.
33. Marcenaro E, Della Chiesa M, Bellora F, Parolini S, Millo R, Moretta L, et al. IL-12 or IL-4 prime human NK cells to mediate functionally divergent interactions with dendritic cells or tumors. *J Immunol.* 2005;174(7):3992–8.
34. Takeda K, Dennert G. The development of autoimmunity in C57BL/6 lpr mice correlates with the disappearance of natural killer type 1-positive cells: evidence for their suppressive action on bone marrow stem cell proliferation, B cell immunoglobulin secretion, and autoimmune s. *J Exp Med.* 1993;177(1):155–64.
35. Suárez-Fueyo A, Bradley SJ, Katsuyama T, Solomon S, Katsuyama E, Kyttaris VC, et al. Downregulation of CD3 $\zeta$  in NK Cells from Systemic Lupus Erythematosus Patients Confers a Proinflammatory Phenotype. *J Immunol.* 2018;200(9):3077–86.
36. Liu M, Liu J, Zhang X, Xiao Y, Jiang G, Huang X. Activation status of CD56(dim) natural killer cells is associated with disease activity of patients with systemic lupus erythematosus. *Clin Rheumatol.* 2021;40(3):1103–12.
37. Inoue A, Hasegawa H, Kohno M, Ito MR, Terada M, Imai T, et al. Antagonist of fractalkine (CX3CL1) delays the initiation and ameliorates the progression of lupus nephritis in MRL/lpr mice. *Arthritis Rheum.* 2005;52(5):1522–33.
38. Huang Z, Fu B, Zheng SG, Li X, Sun R, Tian Z, et al. Involvement of CD226+ NK cells in immunopathogenesis of systemic lupus erythematosus. *J Immunol.* 2011;186(6):3421–31.





**KOMITE ETIK PENELITIAN KESEHATAN  
RSUD Dr. SOETOMO SURABAYA**

**KETERANGAN KELAIKAN ETIK  
(" ETHICAL CLEARANCE ")**

1500/KEPK/Ix/2019

**KOMITE ETIK RSUD Dr. SOETOMO SURABAYA TELAH MEMPELAJARI  
SECARA SEKSAMA RANCANGAN PENELITIAN YANG DIUSULKAN, MAKA  
DENGAN INI MENYATAKAN BAHWA PENELITIAN DENGAN JUDUL :**

**" Perbandingan Jumlah dan Persentase Sel NK Teraktivasi dengan Aktivitas Systemic  
Lupus Erythematosus "**

**PENELITI UTAMA : Wita Kartika Nurani, dr., Sp.PD**

**PENELITI LAIN : 1. Dr. Gatot Soegiarto, dr., Sp.PD., K-AI., FINASIM  
2. Dr. Yuliasih, dr., Sp.PD., K-R., FINASIM  
3. Deasy Fetarayani, dr., Sp.PD., K-AI  
4. Ari Baskoro, dr., Sp.PD., K-AI**

**UNIT / LEMBAGA / TEMPAT PENELITIAN : RSUD Dr. Soetomo**

**DINYATAKAN LAIK ETIK**

**Berlaku dari : 10/09/2019 s.d 10/09/2020**

**Surabaya, 10 September 2019**

**KETUA**



**(Dr. Elizeus Hanindito, dr., Sp.An, KIC,KAP)**

**NIP. 19511007 197903 1 002**

**\*) Sertifikat ini dinyatakan sah apabila telah mendapatkan stempel asli dari Komite Etik**