

Maria Andisa maria.andisa-13@fkg.unair.ac.id

Fwd: Manuscript Submission "Microleakage difference between bulk and incremental technique on bulk fill resin composite restoration (in vitro study)"

To: nanikzubaidah@yahoo.com, Nanik Zubaidah <nanik-z@fkg.unair.ac.id>

----- Forwarded message -----

Dari: **Maria Andisa** <maria.andisa-13@fkg.unair.ac.id>

Date: Sab, 18 Agu 2018 pukul 13.44

Subject: Manuscript Submission "Microleakage difference between bulk and incremental technique on bulk fill resin composite restoration (in vitro study)"

To: izzet yavuz <izzetyavuz@hotmail.com>

Dear Prof. Dr. Yavuz

I am sending this on behalf of Nanik Zubaidah, DDS, MHS we have just uploaded the file of our original manuscript entitled "**Microleakage difference between bulk and incremental technique on bulk fill resin composite restoration (in vitro study)**" by Nanik Zubaidah, Maria Andisa Mayangsari, Mochamad Mudjiono for consideration of publication in the **Journal of International Dental and Medical Research** as a **full article**

Author Correspondence: **Nanik Zubaidah, DDS, MHS**, Department of Conservative Dentistry, Faculty of Dental Medicine of Universitas Airlangga, Jl. Prof Dr. Moestopo no. 47, Surabaya, Indonesia. E-mail: nanikzubaidah@yahoo.com, maria.andisa-13@fkg.unair.ac.id

By submitting the manuscript to the **Journal of International Dental and Medical Research**, the author understand that the material presented in this paper has not been published before nor has it been submitted for publication to another scientific journal or being considered for publication elsewhere. I attest that this work has been approved by all co-authors. The authors also understand that should the submitted material be accepted for publication in the journal, they will automatically transfer the copyright to the publisher. All authors have made substantive contribution to this study and manuscript, and all have reviewed the final paper prior to its submission.

I hope that the reviewing process finds the manuscript acceptable for publication in the journal. If there's any information about this journal submission please forward to my email.

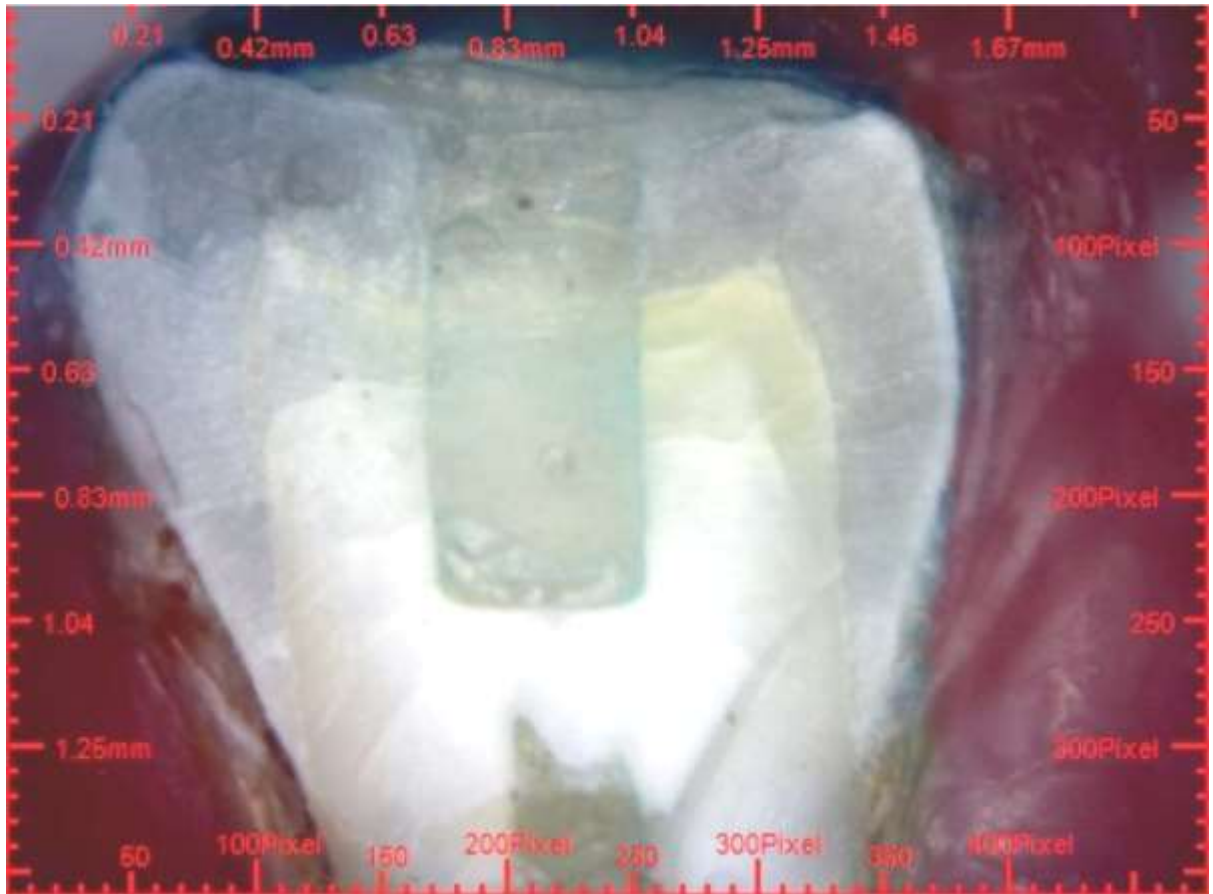
Sincerely Yours,

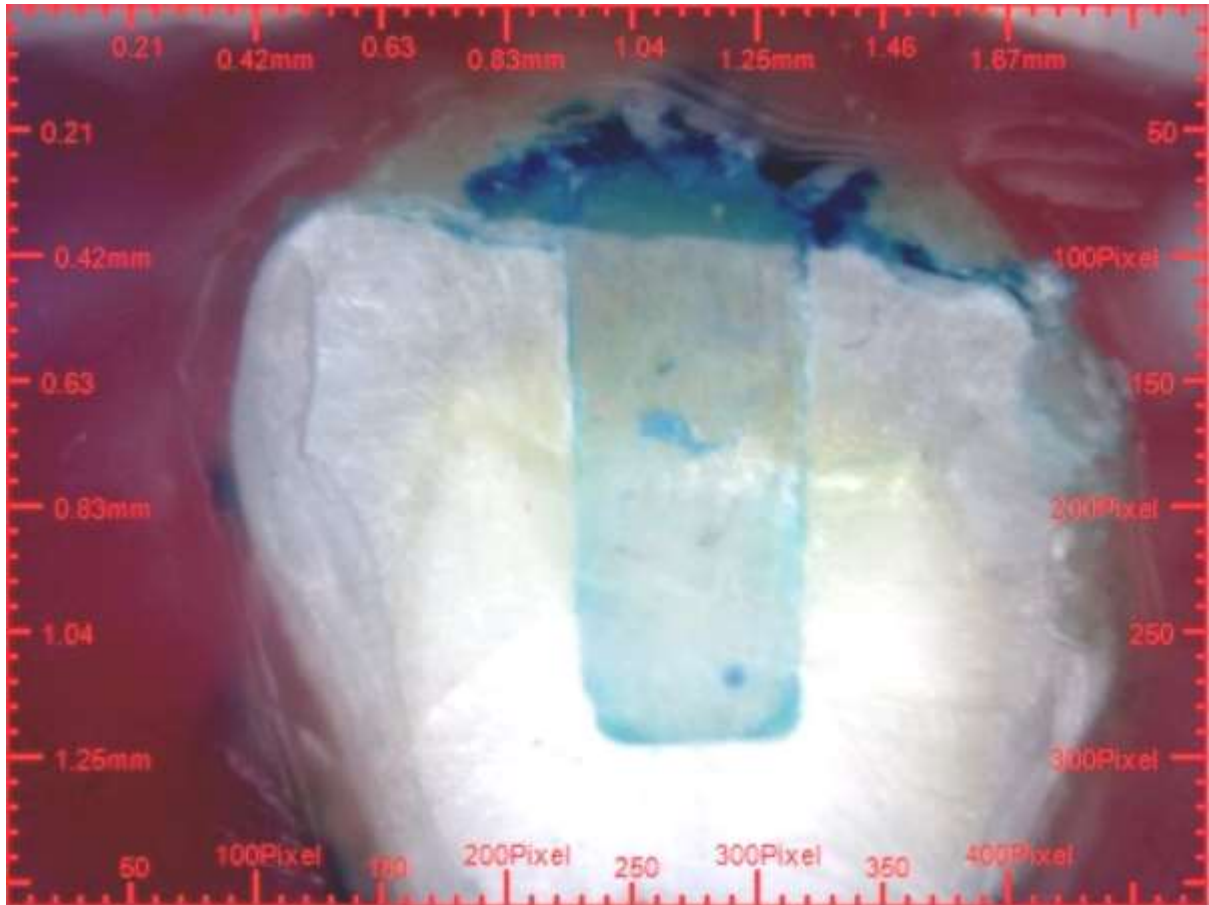
--

Maria Andisa Mayangsari
Faculty of Dental Medicine
Universitas Airlangga
Surabaya, Indonesia
Phone: +628113391413 (Whatsapp available)

--

Maria Andisa Mayangsari
Faculty of Dental Medicine
Universitas Airlangga
Surabaya, Indonesia
Phone: +628113391413 (Whatsapp available)





Maria Andisa maria.andisa-13@fkg.unair.ac.id

Fwd: D18_742_Maria_Andisa_Mayangsari / Submission bulk fill resin composite restoration (in vitro study)"

To: nanikzubaidah@yahoo.com, Nanik Zubaidah <nanik-z@fkg.unair.ac.id>

----- Forwarded message -----

Dari: **izzet yavuz** <izzetyavuz@hotmail.com>

Date: Min, 19 Agu 2018 pukul 19.13

Subject: D18_742_Maria_Andisa_Mayangsari / Submission bulk fill resin composite restoration (in vitro study)"

To: Maria Andisa <maria.andisa-13@fkg.unair.ac.id>

Dear **Prof. Dr. Nanik Zubaidah**,

Your manuscript entitled " **Microleakage difference between bulk and incremental technique on bulk fill resin composite restoration (in vitro study)** " has been successfully submitted to the JIDMR by e-mail and will be considered for publication in "**Journal of International Dental and Medical Research**".

We are sending your article for a peer-review and when we receive an evaluation we will inform you.

Thank for considering the manuscript for submission to the **Journal of International Dental and Medical Research**.

Please feel free to contact me with any questions or concerns.

Best Regards,

Prof. Dr. Izzet YAVUZ

Dean of D.Ü. Faculty of Dentistry
Editor-in-Chief and General Director
Journal of International Dental and Medical Research ISSN 1309 - 100X

<http://www.jidmr.com/journal/>

MSc, PhD, D Ped Dent.
Professor, Pediatric Dentistry

MSc, PhD, D Ped Dent.
Professor, Pediatric Dentistry
Faculty of Dentistry, University of Dicle
21280 Diyarbakir, TURKEY
E-mail: izzetyavuz@hotmail.com, iyavuz@dicle.edu.tr
ECTODERMAL DYSPLASIA GROUP - TURKEY
<http://www.ektodermaldisplazi.com>

Gönderen: Maria Andisa <maria.andisa-13@fkg.unair.ac.id>

Gönderildi: 18 Ağustos 2018 Cumartesi 09:44

Kime: izzet yavuz

Konu: Manuscript Submission "Microleakage difference between bulk and incremental technique on bulk fill resin composite restoration (in vitro study)"

Dear Prof. Dr. Yavuz

I am sending this on behalf of Nanik Zubaidah, DDS, MHS we have just uploaded the file of our original manuscript entitled "**Microleakage difference between bulk and incremental technique on bulk fill resin composite restoration (in vitro study)**" by Nanik Zubaidah, Maria Andisa Mayangsari, Mochamad Mudjiono for consideration of publication in the **Journal of International Dental and Medical Research** as a **full article**

Author Correspondence: Nanik Zubaidah, DDS, MHS, Department of Conservative Dentistry, Faculty of Dental Medicine of Universitas Airlangga, Jl. Prof Dr. Moestopo no. 47, Surabaya, Indonesia. E-mail: nanikzubaidah@yahoo.com, maria.andisa-13@fkg.unair.ac.id

By submitting the manuscript to the **Journal of International Dental and Medical Research**, the author understand that the material presented in this paper has not been published before nor has it been submitted for publication to another scientific journal or being considered for publication elsewhere. I attest that this work has been approved by all co-authors. The authors also understand that should the submitted material be accepted for publication in the journal, they will automatically transfer the copyright to the publisher. All authors have made substantive contribution to this study and manuscript, and all have reviewed the final paper prior to its submission.

I hope that the reviewing process finds the manuscript acceptable for publication in the journal. If there's any information about this journal submission please forward to my email.

Sincerely Yours,

--

Maria Andisa Mayangsari
Faculty of Dental Medicine
Universitas Airlangga
Surabaya, Indonesia
Phone: +628113391413 (Whatsapp available)

--

Maria Andisa Mayangsari
Faculty of Dental Medicine
Universitas Airlangga
Surabaya, Indonesia
Phone: +628113391413 (Whatsapp available)

--

Gönderen: Maria Andisa <maria.andisa-13@fkg.unair.ac.id>

Gönderildi: 26 Ekim 2018 Cuma 09:40

Kime: izzet yavuz

Konu: Manuscript status of D18_742_Maria_Andisa_Mayangsari

Dear Prof Dr Izzet Yavuz

I have submitted my manuscript no D18_742_Maria_Andisa_Mayangsari since August 19th 2018. I am aware that my manuscript is in peer review process. Without intention to make haste, I would like to ask the current status of my manuscript and if there is anything else required.

I appreciate your time and cooperation very much.

Best Regards

--

Maria Andisa Mayangsari
Faculty of Dental Medicine
Universitas Airlangga
Surabaya, Indonesia
Phone: +628113391413 (Whatsapp available)

--

Maria Andisa Mayangsari
Faculty of Dental Medicine
Universitas Airlangga
Surabaya, Indonesia
Phone: +628113391413 (Whatsapp available)

Maria Andisa maria.andisa-13@fkg.unair.ac.id

Fwd: D18_742_Maria_Andisa_Mayangsari / Revision needs

To: nanikzubaidah@yahoo.com, Nanik Zubaidah nanik-z@fkg.unair.ac.id

----- Forwarded message -----

Dari: **izzet yavuz** <izzetyavuz@hotmail.com>

Date: Jum, 26 Okt 2018 pukul 14.20

Subject: D18_742_Maria_Andisa_Mayangsari / Revision needs

To: Maria Andisa <maria.andisa-13@fkg.unair.ac.id>, nanikzubaidah@yahoo.com <nanikzubaidah@yahoo.com>

Dear **Prof. Dr. Nanik Zubaidah**,

Your paper looking acceptable titled "**Microleakage difference between bulk and incremental technique on bulk fill resin composite restoration (in vitro study)**", but please check to the references section according to the JIDMR guideline <http://www.jidmr.com/journal/author-guidelines/> .

All of the references section should be unique with a same character (Year; volume(No): page number).

Improve to the article with latest published articles, which some of reference samples are below.

It will be welcome if you cite some of them in your article.

After the revisions you can submit your paper.

Sincerely yours.

1. **Microleakage Differences on Composite Resin Restoration with and without Nanohybrid Flowable Composite Resin as a Surface Sealant**

Aditya Arinta Putra, Ruslan Effendy, Devi Eka Yuniarti

[Journal of International Dental and Medical Research 2018; 11 \(1\)](#)

Pages 289-293

2. **Influence of Curing Time and Color Shade on Diametral Tensile Strength of Bulk Fill Composite Resins**

Siti Triaminingsih, Yosi Kusuma Eriwati, Sefty Aryani Harahap, Rebecca Grace Agustina

[Journal of International Dental and Medical Research 2018; 11 \(2\)](#)

Pages 441-444

3. **Effect of Different Light-Curing Sources on Diametral Tensile Strength of Bulk Fill Composite Resins**

Yosi Kusuma Eriwati, Konita Nur Khasanah, Sefty Aryani Harahap, Siti Triaminingsih

[Journal of International Dental and Medical Research 2018; 11 \(2\)](#)

Pages 491-494

4. **THE EFFECT OF FINISHING AND POLISHING SYSTEMS ON SURFACE ROUGHNESS, MICROHARDNESS AND MICROLEAKAGE OF A NANOHYBRID COMPOSITE**

Ece EDEN, Dilsah COGULU, Thomas ATTIN

[Journal of International Dental and Medical Research](#)

[2012 Volume 5 - Number 3](#)

Pages 155-160

5. **NEW DIRECTION FOR MEASUREMENT OF MICROLEAKAGE IN CARIOLOGY RESEARCH**

Izzet Yavuz, Haluk Aydın

Journal of International Dental and Medical Research

2010 Volume 3 - Number 1

Pages 19-24

6. THE EFFECT OF SILVER DIAMINE FLUORIDE ON MICROLEAKAGE OF RESIN COMPOSITE

Ilhan Uzel, Ozlem Ulukent, Dilsah Cogulu

Journal of International Dental and Medical Research

2013 Volume 6 - Number 3

Pages 105-108

Prof. Dr. Izzet YAVUZ

Dean of D.Ü. Faculty of Dentistry

Editor-in-Chief and General Director

Journal of International Dental and Medical Research ISSN 1309 - 100X

<http://www.jidmr.com/journal/>

MSc, PhD, D Ped Dent.

Professor, Pediatric Dentistry

MSc, PhD, D Ped Dent.

Professor, Pediatric Dentistry

Faculty of Dentistry, University of Dicle

21280 Diyarbakir, TURKEY

E-mail: izzetyavuz@hotmail.com, iyavuz@dicle.edu.tr

ECTODERMAL DYSPLASIA GROUP - TURKEY

<http://www.ektodermaldisplazi.com>



Find messages, documents, photos or people



Home

Compose

← Back ↶ ↷ → Archive ↗ Move 🗑 Delete 🛡 Spam

☰ 31 ☰



- Inbox** 613
- Unread
- Starred
- Drafts 17
- Sent
- Archive
- Spam
- Trash
- Less
- Views Hide
- 📷 Photos
- 📄 Documents
- ✂ Deals
- 🛒 Purchases
- 🛒 Groceries
- ➔ Travel
- 🔍 Tutorials
- Folders Hide
- + New Folder
- Junk

----- Forwarded message -----
 From: **izzet yavuz** <izzetyavuz@hotmail.com>
 Date: Tue, Nov 6, 2018, 1:24 AM
 Subject: D18_742_Maria_Andisa_Mayangsari
 To: nanikzubaidah@yahoo.com <nanikzubaidah@yahoo.com>, maria.andisa-13@fkg.unair.ac.id <maria.andisa-13@fkg.unair.ac.id>

Dear **Prof. Dr. Maria Andisa Mayangsari,**

Thank you very much for complete to the publication process.

Your article " **Microleakage difference between bulk and incremental technique on bulk fill resin composite restoration (in vitro study)**", will be publish at the 2019 volume 12 number 2 JIDMR.

Before sending manuscript to press, I will send to you the press ready copy for your final checking.

Sincerely yours.

Prof. Dr. Izzet YAVUZ
 Dean of D.Ü. Faculty of Dentistry
 Editor-in-Chief and General Director

Journal of International Dental and Medical Research ISSN 1309 - 100X
<http://www.jidmr.com/journal/>
MSc, PhD, D Ped Dent.
Professor, Pediatric Dentistry
 MSc, PhD, D Ped Dent.
 Professor, Pediatric Dentistry
 Faculty of Dentistry, University of Dicle
 21280 Diyarbakir, TURKEY
 E-mail: izzetyavuz@hotmail.com, iyavuz@dicle.edu.tr
ECTODERMAL DYSPLASIA GROUP - TURKEY
<http://www.ektodermaldislazi.com>



Maria Andisa 🔍

maria.andisa-13@fkg.unair.ac.id



Berrylook BELANJ



Berrylook BELANJ

izzet yavuz izzetyavuz@hotmail.com

D18_742_Maria_Andisa_Mayangsari / Accept letter

To: Maria Andisa <maria.andisa-13@fkg.unair.ac.id>, "nanikzubaidah@yahoo.com" <nanikzubaidah@yahoo.com>

Subject: Your article has been accepted for Publication. (**Nanik Zubaidah, Maria Andisa Mayangsari , Mochamad Mudjiono, “Microleakage difference between bulk and incremental technique on bulk fill resin composite restoration (in vitro study)”**)

Dear Prof. Dr. Maria Andisa Mayangsari,

It's a great pleasure for me to inform you that your manuscript which titled **“Microleakage difference between bulk and incremental technique on bulk fill resin composite restoration (in vitro study)”** has been accepted and will be finalized for **issue 2019; volume 12 number 2.**

Send us Transfer of Copyright Agreement please, it is necessarily before sending manuscript to press <http://www.jidmr.com/journal/> , http://www.ektodermaldisplazi.com/journal/documents/Transfer_of_Copyright_Agreement.doc

.Before sending manuscript to press, I will send to you the press ready copy for your final checking.

Sincerely yours.

Publication processing charges for your article is **400 US\$.**

Please complete to the publication process for your accepted article.

Sincerely yours.

1- By bank transfer to the my account (as 400 US\$).

Please **carefully fill in** transaction form and indicate to the; **Full Account Beneficiary Name, Account IBAN number and article ID number** at the “Remittance Information” section over the transaction or swift bill (pay slip).

Please inform me money order date when you did.

FINANCIAL INSTITUTION Vakıf Bank	BANK CODE/ABA # Vakıf Bank 015
BRANCH Dicle Üniversitesi (Diyarbakir)(S0527)Bağlı Şube	ACCOUNT HOLDER / BENEFICIARY NAME# izzet yavuz
CITY/STATE/ZIP/COUNTRY Dicle Üniversitesi Kampüs Alanı Sur. Diyarbakir / 21280/ Turkey	SWIFT CODE TVBATR2A BIC CODE XXX IBAN / ACCOUNT NUMBER # TR190001500158048013204615

Prof. Dr. Izzet YAVUZ

Dean of D.Ü. Faculty of Dentistry

Editor-in-Chief and General Director

Journal of International Dental and Medical Research ISSN 1309 - 100X

<http://www.jidmr.com/journal/>

MSc, PhD, D Ped Dent.

Professor, Pediatric Dentistry

MSc, PhD, D Ped Dent.

Professor, Pediatric Dentistry

Faculty of Dentistry, University of Dicle

21280 Diyarbakir, TURKEY

E-mail: izzetyavuz@hotmail.com, iyavuz@dicle.edu.tr

ECTODERMAL DYSPLASIA GROUP - TURKEY

<http://www.ektodermaldisplazi.com>

Maria Andisa maria.andisa-13@fkg.unair.ac.id

Re: D18_742_Maria_Andisa_Mayangsari / Accept letter

To: izzet yavuz <izzetyavuz@hotmail.com>, nanikzubaidah@yahoo.com

Dear Prof. Dr. Izzet Yavuz

We are glad to hear the good news and thankful for your kind help as well. Within this email i attached the copyright tranfer form signed by all authors and proof of publication charges payment. Please let me know if anything else's required. Thank you very much for your time and help.

Regards

Maria Andisa Mayangsari

Faculty of Dental Medicine

Universitas Airlangga

Surabaya, Indonesia

[See More from izzet yavuz](#)

Prof. Dr. Izzet YAVUZ

Dean of D.Ü. Faculty of Dentistry

Editor-in-Chief and General Director

Journal of International Dental and Medical Research ISSN 1309 - 100X

<http://www.jidmr.com/journal/>

MSc, PhD, D Ped Dent.

Professor, Pediatric Dentistry

MSc, PhD, D Ped Dent.

Professor, Pediatric Dentistry

Faculty of Dentistry, University of Dicle

21280 Diyarbakir, TURKEY

E-mail: izzetyavuz@hotmail.com, iyavuz@dicle.edu.tr

ECTODERMAL DYSPLASIA GROUP - TURKEY

<http://www.ektodermaldisplazi.com>

izzet yavuz izzetyavuz@hotmail.com

D18_742_Maria_Andisa_Mayangsari

To: "nanikzubaidah@yahoo.com" <nanikzubaidah@yahoo.com>, "maria.andisa-13@fkg.unair.ac.id" maria.andisa-13@fkg.unair.ac.id

Dear **Prof. Dr. Maria Andisa Mayangsari**,

Thank you very much for complete to the publication process.

Your article "**Microleakage difference between bulk and incremental technique on bulk fill resin composite restoration (in vitro study)**", will be publish at the 2019 volume 12 number 2 JIDMR.

Before sending manuscript to press, I will send to you the press ready copy for your final checking.

Sincerely yours.

Prof. Dr. Izzet YAVUZ

Dean of D.Ü. Faculty of Dentistry

Editor-in-Chief and General Director

Journal of International Dental and Medical Research ISSN 1309 - 100X

<http://www.jidmr.com/journal/>

MSc, PhD, D Ped Dent.

Professor, Pediatric Dentistry

MSc, PhD, D Ped Dent.

Professor, Pediatric Dentistry

Faculty of Dentistry, University of Dicle

21280 Diyarbakir, TURKEY

E-mail: izzetyavuz@hotmail.com, iyavuz@dicle.edu.tr

ECTODERMAL DYSPLASIA GROUP - TURKEY

<http://www.ektodermaldisplazi.com>

Maria Andisa maria.andisa-13@fkg.unair.ac.id

Fwd: Galley Proof for Manuscript Publication by Nanik Zubaidah
To: nanikzubaidah@yahoo.com, Nanik Zubaidah <nanik-z@fkg.unair.ac.id>

----- Forwarded message -----

Dari: **izzet yavuz** <izzetyavuz@hotmail.com>
Date: Rab, 10 Jul 2019 pukul 04.57
Subject: Ynt: Galley Proof for Manuscript Publication by Nanik Zubaidah
To: Maria Andisa <maria.andisa-13@fkg.unair.ac.id>

Dear author your article has been published. Galley Prof have had been sent to the corresponding author mail.

Sincerely yours.

http://www.jidmr.com/journal/wp-content/uploads/2019/07/22_D18_742_Maria_Andisa_Mayangsari_Layout.pdf

[Journal of International Dental and Medical Research ISSN 1309-100X
Microleakage Difference - jidmr.com](http://www.jidmr.com/journal/wp-content/uploads/2019/07/22_D18_742_Maria_Andisa_Mayangsari_Layout.pdf)

Journal of International Dental and Medical Research ISSN 1309-100X Microleakage Difference
www.jidmr.com

<http://www.jidmr.com/journal/>

Please have a check to the last layout file of your article.

❓
❓
❓
❓

izzet yavuz
27.06.2019 Per 01:15

• nanikzubaidah@yahoo.com

📎

D18_742_Maria_Andisa_Mayangsari_Layout.pdf
311 KB

Dear author,

Please have a check to the last layout file of your article.

You can offer only minor corrections for any mistake which done by our side, you have to inform us within 3 days.

Your article will be publish at the coming issue, which will be released at the early July.

Sincerely yours.

Prof. Dr. Izzet YAVUZ

Dean of D.Ü. Faculty of Dentistry

Editor-in-Chief and General Director

Journal of International Dental and Medical Research ISSN 1309 - 100X

<http://www.jidmr.com/journal/>

MSc, PhD, D Ped Dent.

Professor, Pediatric Dentistry

MSc, PhD, D Ped Dent.

Professor, Pediatric Dentistry

Faculty of Dentistry, University of Dicle

21280 Diyarbakir, TURKEY

E-mail: izzetyavuz@hotmail.com, iyavuz@dicle.edu.tr

ECTODERMAL DYSPLASIA GROUP - TURKEY

<http://www.ektodermaldisplazi.com>

Gönderen: Maria Andisa <maria.andisa-13@fkg.unair.ac.id>

Gönderildi: 8 Temmuz 2019 Pazartesi 06:52

Kime: izzet yavuz

Konu: Fwd: Galley Proof for Manuscript Publication by Nanik Zubaidah

Dear Prof. Dr. Izzet Yavuz

According to the previous emails, i am aware that my manuscript entitled "**Microleakage difference between bulk and incremental technique on bulk fill resin composite restoration (in vitro study)**" will be published at 2019 volume 12 no. 2. I would like to make a revision of the corresponding email due to some errors in the previous email account. Hence i would like to ask when will the galley proof be sent to us.
Thank you for your kind cooperation.

Regards,
Maria Andisa Mayangsari, DDS
Faculty of Dental Medicine
Universitas Airlangga
Surabaya, Indonesia

----- Forwarded message -----

Dari: **Maria Andisa** <maria.andisa-13@fkg.unair.ac.id>

Date: Kam, 20 Jun 2019 pukul 16.58

Subject: Galley Proof for Manuscript Publication by Nanik Zubaidah

To: izzet yavuz <izzetyavuz@hotmail.com>

Dear Prof. Dr. Izzet Yavuz

According to the previous emails, i am aware that my manuscript entitled "**Microleakage difference between bulk and incremental technique on bulk fill resin composite restoration (in vitro study)**" will be published at 2019 volume 12 no. 2. I would like to make a revision of the corresponding email due to some errors in the previous email account. Hence i would like to ask when will the galley proof be sent to us.
Thank you for your kind cooperation.

Regards,
Maria Andisa Mayangsari, DDS

Faculty of Dental Medicine
Universitas Airlangga
Surabaya, Indonesia

--

Maria Andisa Mayangsari
Faculty of Dental Medicine
Universitas Airlangga
Surabaya, Indonesia
Phone: +628113391413 (Whatsapp available)

--

Maria Andisa Mayangsari
Faculty of Dental Medicine
Universitas Airlangga
Surabaya, Indonesia
Phone: +628113391413 (Whatsapp available)

ORIGINAL ARTICLE

Microleakage difference between bulk and incremental technique on bulk fill resin composite restoration (in vitro study)

Nanik Zubaidah¹, Maria Andisa Mayangsari² , Mochamad Mudjiono¹

1. Department of Conservative Dentistry, Faculty of Dental Medicine, Universitas Airlangga, Surabaya, Indonesia

2. Undergraduate student, Faculty of Dental Medicine, Universitas Airlangga, Surabaya, Indonesia

ABSTRACT

Background: Polymerization shrinkage is one major drawback of composite resin as dental restoration material. Polymerization shrinkage can cause microleakage that may impact on the occurrence of secondary caries. Incremental placement technique has been widely suggested as an attempt to minimize polymerization shrinkage. Meanwhile, developments in dentistry has led to bulk fill composites that can be used up to a thickness of 4 mm with less polymerization shrinkage compared with conventional composites. *Aim:* To determine microleakage difference between bulk and incremental technique on bulk fill resin composite restoration. *Materials and methods:* Cavity depth of 4 mm with diameter of 2 mm were made on two sample groups, each group consisted of 12 premolars. Group 1 with bulk technique (4 mm) and group 2 with incremental technique of 2 layers (2 mm) horizontally. Samples were submesed in 0.3% methylene blue for 24 hours. Samples were cut in bucco-lingual direction and microleakage determined with scoring system. *Results:* There were significant differences between sample groups ($p < 0.05$). In general, microleakage produced by incremental technique was smaller than bulk technique. *Conclusion:* Incremental technique on bulk fill resin composite restoration creates less microleakage than bulk technique.

Keywords: Bulk fill composite, microleakage, bulk technique, incremental technique, polymerization shrinkage.

Corresponding Author: Nanik Zubaidah, Department of Conservative Dentistry, Faculty of Dental Medicine, Universitas Airlangga, Jl. Mayjen. Prof. Dr. Moestopo 47, Surabaya 60132, Indonesia.

Phone number: +62 31 50 30 255, Fax number: +62 31 50 20 256

Email: nanikzubaidah@yahoo.com, maria.andisa-13@fkg.unair.ac.id

Introduction

Composite resin is a restorative material that was introduced in the 1960s by Bowen. Since then, the composite resin has undergone many developments until now. However, conventional composite resins have several drawbacks, including shrinkage and stress due to polymerization processes, marginal microleakage, post-operative sensitivity, wear, discoloration, low fracture resistance, caries recurrence and tooth deformation.^{1,2} Large posterior composite restoration has high failure rate, secondary caries incidence, and therefore higher retreatment frequency.³ One of the most common causes (about 73.9%) of restoration failure was secondary caries.^{4,5}

Secondary caries is defined as caries on tooth surface under the restorative material. Secondary caries can be found on the enamel surface around the restoration material or extends along its margins.⁶ This may result from marginal microleakage arising from poor marginal adaptation of composite resin due to polymerization shrinkage, thus causing post-operative tooth sensitivity and bacterial invasion of *Streptococcus mutans*.² Contraction force due to light cure polymerization will compete with the adhesion force between tooth structure and composite resin, thus able to break the bond between the composite and the tooth structure and therefore form a marginal gap. Marginal gap may become the entry for bacteria and eventually develop into secondary caries.⁷

In terms of direct restoration for deep cavity, there are three major challenges, namely the depth of cure limitations that limit the thickness of the composite placement, the shrinkage due to setting reaction, and the manipulation of proximal contact with adjacent teeth. When the composite resin is placed thicker than the depth of cure according to the manufacturer then the polymerization will not be optimal. This will also result in greater polymerization shrinkage and increase the risk of secondary caries.⁸

Currently, almost all commercially available composite resins have the basic properties of polymerization shrinkage due to the methacrylate-based monomer composition. One of the well-known techniques to reduce polymerization shrinkage is incremental curing that can produce less marginal leakage compared to a single curing on conventional composite resins.⁹

The development of dental materials has led to the increasingly popular methacrylate bulk fill composite because of certain properties, including good flow, good elasticity, smaller shrinkage, and high degree of conversion which allows penetration of light up to 4 mm depth.¹⁰ Less polymerization shrinkage on bulk fill composite resins is due to the addition of special modifiers that can reduce stress of polymerization process.¹

Incremental curing technique have been shown to reduce microleakage on hybrid composite resins. Sakri *et al.*, found that in incremental techniques with a 1 mm thick layer in a 2 mm cavity having less edge leakage than without incremental.¹¹ Zorzin et al., have also observed that two increments curing can minimize polymerization shrinkage and increase degree of conversion on bulk fill composite resin.¹² However, there are still a few researches on how variations in the amount of curing affect the microleakage of packable bulk fill composite resin. If incremental technique successfully minimizes the microleakage of bulk fill composite resin, it will simplify the application and become a time-saving alternative

procedure in restoration because it uses only one type of material without liner or flowable composite.

Materials and Methods

This research was a laboratory experimental with Post Test Only Group Design research design. The samples were 24 maxillary premolar teeth with completely formed roots, without caries, restoration, discoloration, or fracture. The sample size was calculated using the Hypothesis Tests for Two Population Proportions (one-sided test) formula. The samples were divided into two treatment groups, the first group (I) was single increment of 4 mm thickness (bulk technique) with single curing, and the second group (II) was two increments of 2 mm thickness with two-times curing. The composite used was Tetric N-Ceram Bulk Fill (Ivoclar Vivadent, Liechtenstein, Germany). The bonding agent used is Teconom (Ivoclar Vivadent, Liechtenstein, Germany) from the same manufacturer as well.

Sample Preparation:

First the teeth were cleaned and rinsed with saline solution and then stored at room temperature.¹³ Enamel of the occlusal was cut to remove the cusps. The cavity preparation of class I as deep as 4 mm with diameter 2 mm was made with low speed handpiece and cylindrical bur. The depth of the cavity was measured using a straight probe with a stopper as a marker.¹⁴ Finishing of the cavity wall was done with a fine diamond bur.

Group 1: The cavity surface was etched with 37% phosphoric acid on the enamel margin cavosurface, washed, and dried. Total etch bonding was applied with microbrush and cured for 20 seconds. The cavity was filled with 4 mm-thick Tetric N-Ceram Bulk Fill composite, condensed with a plugger, applied celluloid strip to produce a flat surface, then

cured for 20 seconds with an intensity of 600 mW according to the manufacturer's instructions.

Group 2: The cavity surface was etched with 37% phosphoric acid on the enamel margin cavosurface, washed, and dried. Total etch bonding was applied with microbrush and cured for 20 seconds. The cavity was filled with 2mm-thick Tetrill N-Ceram Bulk Fill composite measured with marked probe, condensed with a plugger, applied celluloid strips to produce a flat surface, then cured for 20 seconds with 600 mW intensity according to the manufacturer's instructions. The second layer was added later with thickness of 2 mm and cured for 20 seconds.

Submersion in Methylene Blue:

After all the samples have been filled, the apex were covered with dental wax and the entire part was coated with two layers of nail polish except on the 1 mm around the restoration. Samples were incubated in physiological saline for 24 hours at 37 ° C using incubator. Sample then dried with tissue and submersed in a 0.3% methylene blue solution at 37 ° C for 24 hours in the incubator. After submersion, samples were washed with aquadest for 10 seconds then dried. The samples were cut in buccal-lingual direction starting from the occlusal surface at the center of the restoration to obtain mesial and distal sections. Fixation of every sample was done using the dental wax in block form and dye penetration was measured using the scoring method according to Popoff et al., as follows:¹⁵

0 = no penetration into interfacial-tooth-composite.

1 = dye penetration into interfacial-tooth-composite less than half of the lateral wall of the cavity.

2 = dye penetration into the interfacial-tooth-composite up to more than half the lateral wall of the cavity, but not affecting axio-pulpal wall.

3 = dye penetration into interfacial-tooth-composite along the lateral wall of the cavity and affecting the axio-pulpal wall.

4 = dye penetration into the interfacial-dental composite along the lateral wall of the cavity, affecting the axio-pulpal wall, and extending to the base of the pulp wall.

Observation was done using stereomicroscope (S02 1x-500x 2MP USB Digital Microscope Portable 8-LED Electron Endoscope Magnifier, China) at 40x magnification. Results of scoring were in the form of non-parametric ordinal data and analyzed using Mann-Whitney test.

Results

Microleakage measurement was done by observation dye penetration at restoration of bulk fill composite resin then classified based on scoring criteria. The use of scoring as semi-quantitative method was considered to be the most representative method for microleakage study using dye penetration and sectioning method in two dimensions.

Based on Table 1, the result of group with bulk fill technique on 4 mm deep cavity showed score 0 in 2 teeth, score 1 in 9 teeth and score 4 in 1 tooth. The total number of samples in this group was 12 teeth. In the incremental technique group, out of 12 samples, 7 teeth scored 0 and the other 5 teeth scored 1.

Mann-Whitney test analysis results showed that microleakage score of both groups had significant differences with value of $p = 0.01$ at $p < 0.05$. Group with incremental technique resulted in smaller microleakage compared to the bulk fill technique.

Discussion

Microleakage is one of the factors that play a role of failure in composite resin restoration. Microleakage occurred due to the break of bonding between cavity walls and

restorative materials caused by polymerization shrinkage phenomenon. Composite resin bulk fill as an innovation in the development of composite resin, claimed to have minimal polymerization shrinkage, although placed in a deep cavity (4-5 mm).

The polymerization of the composite resin occurs in two stages, the first being the activation of camphoroquinone (CQ) and the second is propagation reaction. During the first stage, CQ will be excited through activation with blue light (400-550 nm) therefore hydrogen from organic amine (co-initiator) will be attracted and form free radicals. Free radicals will react with monomer molecules starting from the center and polymerization reactions will continue to spread around it. The second stage is propagation involves adding chains through the addition of a cross-linked covalent monomer to a maximum degree of conversion. Maximum degree of conversion means the maximum number of unsaturated bonds (C = C) converted to saturated bonds (C-C).¹⁶

Initially, the distance between molecular monomers is about 4 Å. During the polymerization process, the distance is replaced by a covalent bond with a distance of about 1.5 Å. The volume contraction that occurs as small monomer units is converted into long polymer chains is called polymerization shrinkage. In composite resins, this shrinkage may range from less than 1% to 6%.¹⁶

Polymerization shrinkage will cause shrinkage stress on the interfacial surface of composite resin with enamel & dentin structure. The amount of stress is estimated at 13-17 Mpa. The application of bonding agent is an attempt to compensate the stress shrinkage because it can increase the adhesion bond strength between composite resin and tooth structure up to 20 MPa.¹⁷ However, the strength of the polymerization contraction in gross total can exceed the bonding strength, therefore causing detachment of the bonding and produce a microscopic gap that prone to caries recurrence.¹⁸

The bulk fill composite used was Tetric N-Ceram Bulk Fill from the Ivoclar Vivadent. Tetric N-Ceram Bulk Fill is classified as packable due to its large filler particle proportion (73.1%) and is indicated for posterior restoration. The unique feature of this composite compared to other bulk fill composites is the addition of Ivocerin, a photoinitiator. Ivocerin was claimed to have better light absorption properties compared to CQ.¹⁹

The curing technique may affect the depth of cure of the composite resin. Therefore, the light curing unit, light intensity, wavelength, and radiation distance were controlled to create the same treatment for all samples. The intensity of light and wavelength used was adjusted to the manufacturer's instructions above 500 nm with a wavelength of about 450 nm. Based on Dunne & Millar, the closer the radiation distance is, the greater the depth of cure of the composite resin.²⁰ Therefore, the irradiation was as close as possible (attached to the surface of the composite resin) in order to obtain maximum depth of cure.

Microleakage was observed through the penetration of methylene blue on the interfacial surface of the bulk fill composite resin with the cavity wall. Methylene blue was used due to its low molecular weight, affordable cost, and easy to use. The molecular weight of the methylene blue is lower than the average molecular weight of bacteria so it is considered representative enough to identify the microleakage of composite resin restoration.¹¹

The scoring method used to assess microleakage has been used in a study by Popoff et al.¹⁵ The scoring method is considered a semiquantitative method because the assessment is based solely on the observation and interpretation of the observer. In addition, one of the limitations of this method is that it cannot quantitatively measure the microleakage because the sample cut is only done on one side (bucco-lingual) only. Nevertheless, this method is still acceptable and widely used to quantify microleakage semiquantitatively.²¹

The bulk technique group showed more samples subjected to microleakage compared to incremental technique. Meanwhile, in incremental technique group, more samples found

without microleakage (score 0). This is consistent with the study of Bugalia et al., which stated that incremental techniques produce smaller microleakage compared to bulk techniques.²² Through incremental techniques, light penetration was optimized due to the reduced volume of the polymerized material, hence the light intensity that penetrated into the material was still high and therefore created optimal polymerization.²³ In accordance with the statement Anusavice, the thicker placement of a composite resin, the more light intensity reduced because of material density and absorption by composite resin material.²⁴ The addition of a composite resin second layer after placement of a first layer will compensate the shrinkage of the first layer by closing the gap due to the shrinkage of the first layer volume.²²

Microleakage score of 1 also found in incremental technique group. It can be explained by Welime statement which stated that in incremental technique, it was possible that the volume of composite resin applied in incremental technique will be less than the initial volume.²³ Therefore, there would be deformity of the cavity wall which resulted in an interfacial gap. Many studies have attempted to examine incremental techniques that can produce the maximum marginal seal. In addition to the horizontal layering technique used in this study, there are several techniques that have been studied such as oblique, centripetal, and horizontal split techniques.²⁵

In this study, microleakage still found in entire experimental groups, but there was a significant difference between bulk technique and incremental technique. Microleakage observed in the incremental group was smaller than in bulk technique.

Conclusion

Restoration using incremental technique proved to result less microleakage compared to bulk fill technique. Therefore it was recommended for clinical use for composite resin restoration. Further research can be done to investigate more specific incremental techniques,

such as incremental oblique and centripetal techniques. In addition, the biocompatibility of bulk fill packable composites in deep and adjacent-to-pulp cavities also need to be studied.

Conflict of Interests:

Conflict of interests are declared none.

References

1. Hatrick CD, Eackle S. Dental Materials: Clinical Applications for Dental Assistants and Dental Hygienists. Missouri: Elsevier; 2016:74.
2. Mahajan V, Bhondwe S, Doot R, Balpande R, Bhandari S, Dahiwalé SS. Failure in composite restoration. Int J of Dental Restoration 2015;3(3): 10-4.
3. Boharty BS, Ye Q, Misra A, Sene F, Spencer P. Posterior Composite Restoration Update: Focus on Factors Influencing Form and Function. Clin Cosmet Invest Dent 2013;5:32-42.
4. Abolghasemzade F, Alaghehmand H, Judi R. The Reasons for Composite Restoration Replacement in Restorative Department of Babol Dental School. Jentashapir J Health Res 2015;6(6): 7-10.
5. Kopperud SE, Tveit AB, Gaarden T, Sandvik L, Espelid I. Longevity of Posterior Dental Restorations and Reasons for Failure. Eur J Oral Sci 2012;120(6):539-48
6. Nisha G, Amit G. Textbook of Operative Dentistry, 3rd Edition. New Delhi: Jaypee 2015;65,273,321.
7. Oliveira L, Duarte S, Araujo C, Abrahão A. Effect of Low-elastic Modulus Liner and Base as Stress-absorbing Layer in Composite Resin Restorations. Dent Mater 2010; 26(3):159-69.
8. Kay E. Dentistry at A Glance. Oxford: John Wiley & Sons 2016;103.

9. Bagis YH, Baltacioglu IH, Kahyaogullari S. Comparing Microleakage and The Layering Methods of Silorane Composite in Wide Class II MOD Cavities. *Oper Dent* 2009;24(5):578-85.
10. Jackson RD. 2012. Placing posterior composites: A new, practical, efficient techniques [<http://www.oralhealthgroup.com/features/placing-posterior-composites-a-new-practical-efficient-technique/>]. Accessed August 18th 2017.
11. Sakri MR, Koppal P, Patil BC, Haralur SB. Evaluation of Microleakage in Hybrid Composite Restoration with Different Intermediate Layers and Curin Cycles. *J of Dent Allied Sci* 2016;5(1):14-20.
12. Zorzini J, Maier E, Harre S, Fey T, Belli R, Lohbauer U, et al. Bulk-fill Resin Composites: Polymerization Properties and Extended Light Curing. *Dent Mater* 2015;31(3): 293-301.
13. Orłowski M, Tarczydło B, Chalas R. Evaluation of Marginal Integrity of Four Bulk-fill Composite Materials: In Vitro Study. *Sci World J* 2015;1-8, <http://dx.doi.org/10.1155/2015/701262>.
14. Parolia A, Adhailiya N, Porto D, Mala K. A Comparative Evaluation of Microleakage around Class V Cavities Restored with Different Tooth Colored Restorative Materials'. *Oral Health Dent Med J* 2014;13: 1-7.
15. Popoff DA, Soncalves FS, Magalhaes CS, Moreira AN, Ferreira RC, Mjor IA. Repair of Amalgam Restorations With Composite Resin and Bonded Amalgam: A Microleakage Study. *Brazil Dent J* 2011;22(6):799-803
16. Narene AVK, Veniashok B, Subbiya A, Vivekanandhan P, Sukumaran VG. Polymerization Shrinkage in Resin Composite- A Review'. *Middle-East J Sci Res* 2014;21(1):107-12.
17. Fabianelli A, Pollington S, Davidson C, Cagidaco C, Gorracco C. The Relevance of

Micro-Leakage Studies. *Int Dent J* 2011;9:64-70

18. Matinlinna JP, Mittal KL. *Adhesion Aspects in Dentistry*. Boston: VSP 2009;37.
19. Leprince J, Palin W, Vanacker J, Sabbagh J, Devaux J, Leloup G. Physico-mechanical Characteristic of Commercially Available Bulk-fill Composites. *J Dent* 2014;42:993-1000.
20. Dunne SM, Millar BJ. Effect of Distance from Curing Light Tip to Restoration Surface of Composite Resin. *Primary Dent Care* 2008;14(4):147-52.
21. Yavuz I, Aydin AH, Ulku R, Dulgergil TC, Akdag MZ. New Technique: Measurement of Microleakage Volume in The Marginal Gaps of The Dental Restorations. *Biotechnol & Biotechnol Eq* 2006;19(3):184-91.
22. Bugalia A, Yujvender, Bramta N, Kharbanda J, Atri M, Kharbanda G. Effect of Placement Techniques, Flowable Composite, Liner and Fibre inserts on Marginal Microleakage of Class II Composite Restorations. *J Evid Based Med Healthc* 2015;2(32): 4773-87.
23. Welime PK. Placement Technique and Microleakage in Posterior Composite Restorations. *J Res Dent* 2014;2(3): 136-43.
24. Anusavice KJ. *Phillips' Science of Dental Materials*, 11th Edition. Philadelphia: WB Saunders 2014;406-13.
25. Nadig RR, Bugalia A, Usha G, Karthik J, Rao R, Vedavathi B. Effect of Four Different Placement Techniques on Marginal Microleakage Class II Composite Restorations: An In Vitro Study. *World J Dent* 2011;2(2):111-6

Table 1. Scoring results on methylene blue penetration into restoration

Groups	Technique	Score					N	P
		0	1	2	3	4		
I	Bulk fill technique	2	9	-	-	1	12	0.012*
II	Incremental technique	7	5	-	-	-	12	

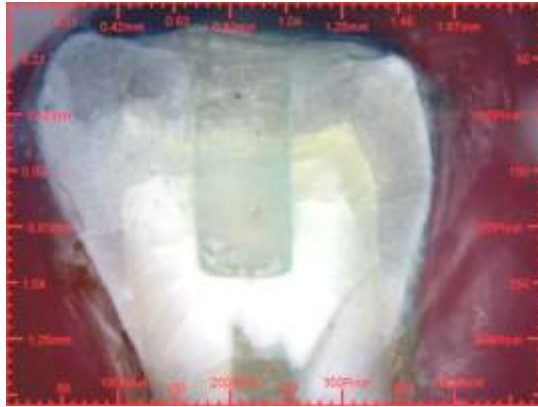


Figure 1. Microleakage with score of 0

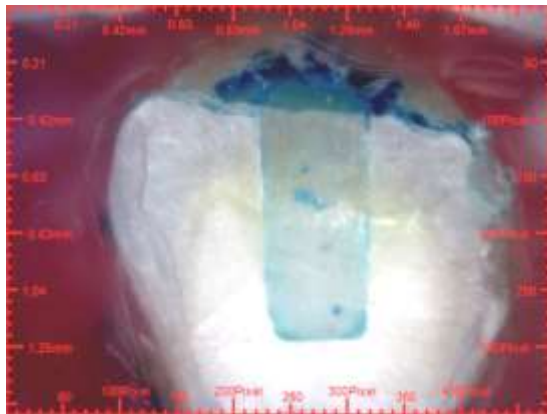
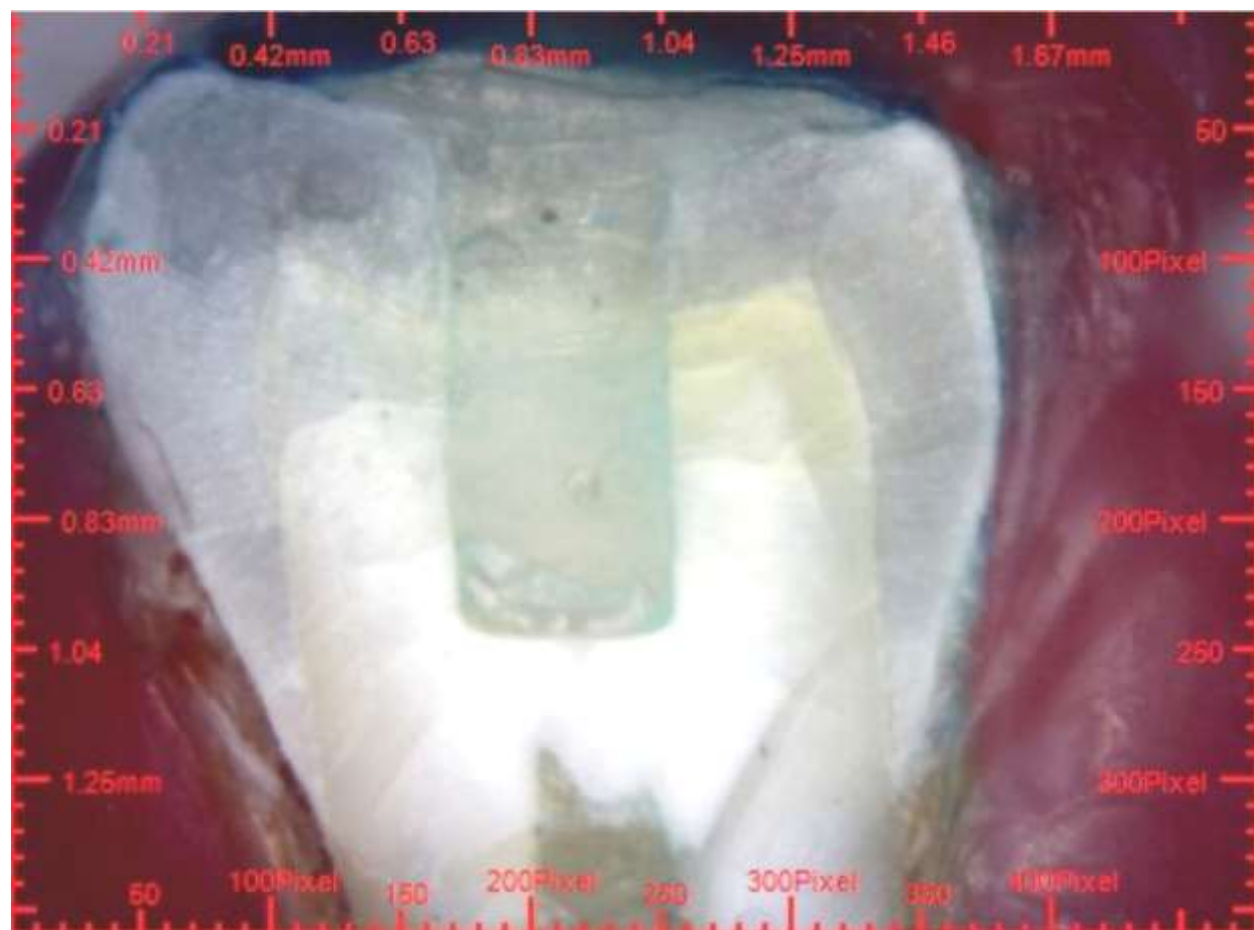
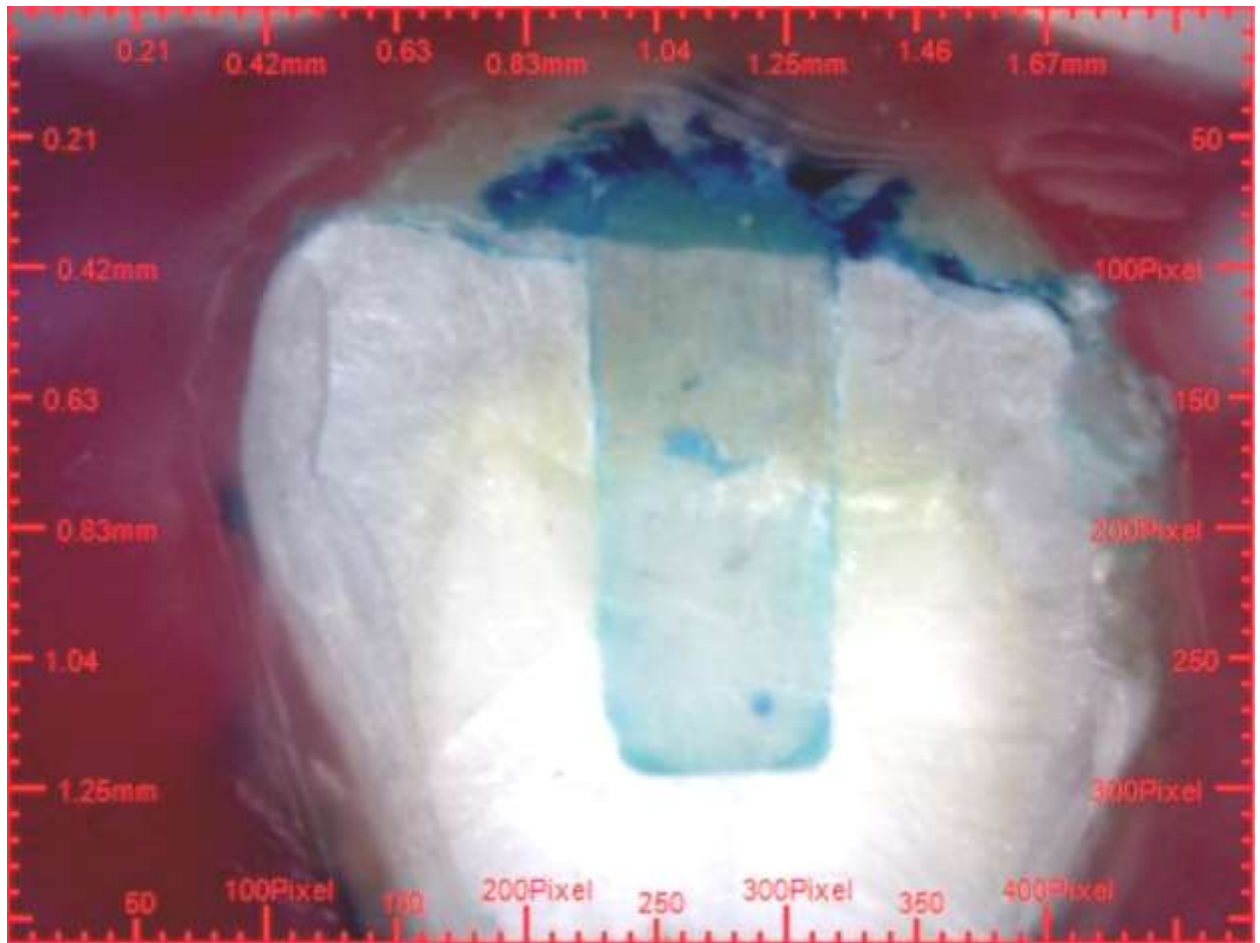


Figure 2. Microleakage with score of 4





Microleakage Difference between Bulk and Incremental Technique on Bulk Fill Resin Composite Restoration (in Vitro Study)

Nanik Zubaidah^{1*}, Maria Andisa Mayangsari², Mochamad Mudjiono¹

1. Department of Conservative Dentistry, Faculty of Dental Medicine, Universitas Airlangga, Surabaya, Indonesia.

2. Undergraduate student, Faculty of Dental Medicine, Universitas Airlangga, Surabaya, Indonesia.

Abstract

Polymerization shrinkage is one major drawback of composite resin as dental restoration material. Polymerization shrinkage can cause microleakage that may impact on the occurrence of secondary caries. Incremental placement technique has been widely suggested as an attempt to minimize polymerization shrinkage. Meanwhile, developments in dentistry has led to bulk fill composites that can be used up to a thickness of 4 mm with less polymerization shrinkage compared with conventional composites. Aim: To determine microleakage difference between bulk and incremental technique on bulk fill resin composite restoration.

Cavity depth of 4 mm with diameter of 2 mm were made on two sample groups, each group consisted of 12 premolars. Group 1 with bulk technique (4 mm) and group 2 with incremental technique of 2 layers (2 mm) horizontally. Samples were submersed in 0.3% methylene blue for 24 hours. Samples were cut in bucco-lingual direction and microleakage determined with scoring system.

There were significant differences between sample groups ($p < 0.05$). In general, microleakage produced by incremental technique was smaller than bulk technique.

Incremental technique on bulk fill resin composite restoration creates less microleakage than bulk technique.

Experimental article (J Int Dent Med Res 2019; 12(2): 498-503)

Keywords: Bulk fill composite, microleakage, bulk technique, incremental technique, polymerization shrinkage.

Received date: 19 August 2018

Accept date: 30 October 2018

Introduction

Composite resin is a restorative material that was introduced in the 1960s by Bowen. Since then, the composite resin has undergone many developments until now. However, conventional composite resins have several drawbacks, including shrinkage and stress due to polymerization processes, marginal microleakage, post-operative sensitivity, wear, discoloration, low fracture resistance, caries recurrence and tooth deformation.^{1,2} Large posterior composite restoration has high failure rate, secondary caries incidence, and therefore higher retreatment

frequency.³ One of the most common causes (about 73.9%) of restoration failure was secondary caries.^{4,5}

Secondary caries is defined as caries on tooth surface under the restorative material. Secondary caries can be found on the enamel surface around the restoration material or extends along its margins.⁶ This may results from marginal microleakage arising from poor marginal adaptation of composite resin due to polymerization shrinkage, thus causing post-operative tooth sensitivity and bacterial invasion of *Streptococcus mutans*.² Contraction force due to light cure polymerization will compete with the adhesion force between tooth structure and composite resin, thus able to break the bond between the composite and the tooth structure and therefore form a marginal gap. Marginal gap may become the entry for bacteria and eventually develop into secondary caries.⁷

In terms of direct restoration for deep cavity, there are three major challenges, namely

*Corresponding author:

Nanik Zubaidah
Department of Conservative Dentistry,
Faculty of Dental Medicine, Universitas Airlangga,
Surabaya, Indonesia.
Email: nanikzubaidah@yahoo.com

the depth of cure limitations that limit the thickness of the composite placement, the shrinkage due to setting reaction, and the manipulation of proximal contact with adjacent teeth. When the composite resin is placed thicker than the depth of cure according to the manufacturer then the polymerization will not be optimal. This will also result in greater polymerization shrinkage and increase the risk of secondary caries.⁸

Currently, almost all commercially available composite resins have the basic properties of polymerization shrinkage due to the methacrylate-based monomer composition. One of the well-known techniques to reduce polymerization shrinkage is incremental curing that can produce less marginal leakage compared to a single curing on conventional composite resins.⁹

The development of dental materials has led to the increasingly popular methacrylate bulk fill composite because of certain properties, including good flow, good elasticity, smaller shrinkage, and high degree of conversion which allows penetration of light up to 4 mm depth.¹⁰ Less polymerization shrinkage on bulk fill composite resins is due to the addition of special modifiers that can reduce stress of polymerization process.¹

Incremental curing technique have been shown to reduce microleakage on hybrid composite resins. Sakri *et al.*, found that in incremental techniques with a 1 mm thick layer in a 2 mm cavity having less edge leakage than without incremental.¹¹ Zorzini *et al.*, have also observed that two increments curing can minimize polymerization shrinkage and increase degree of conversion on bulk fill composite resin.¹² However, there are still a few researches on how variations in the amount of curing affect the microleakage of packable bulk fill composite resin. If incremental technique successfully minimizes the microleakage of bulk fill composite resin, it will simplify the application and become a time-saving alternative procedure in restoration because it uses only one type of material without liner or flowable composite.

Materials and methods

This research was a laboratory experimental with Post Test Only Group Design research design. The samples were 24 maxillary

premolar teeth with completely formed roots, without caries, restoration, discoloration, or fracture. The sample size was calculated using the Hypothesis Tests for Two Population Proportions (one-sided test) formula. The samples were divided into two treatment groups, the first group (I) was single increment of 4 mm thickness (bulk technique) with single curing, and the second group (II) was two increments of 2 mm thickness with two-times curing. The composite used was Tetric N-Ceram Bulk Fill (Ivoclar Vivadent, Liechtenstein, Germany). The bonding agent used is Te-econom (Ivoclar Vivadent, Liechtenstein, Germany) from the same manufacturer as well.

Sample Preparation

First the teeth were cleaned and rinsed with saline solution and then stored at room temperature.¹³ Enamel of the occlusal was cut to remove the cusps. The cavity preparation of class I as deep as 4 mm with diameter 2 mm was made with low speed handpiece and cylindrical bur. The depth of the cavity was measured using a straight probe with a stopper as a marker.¹⁴ Finishing of the cavity wall was done with a fine diamond bur.

Group 1: The cavity surface was etched with 37% phosphoric acid on the enamel margin cavosurface, washed, and dried. Total etch bonding was applied with microbrush and cured for 20 seconds. The cavity was filled with 4 mm-thick Tetric N-Ceram Bulk Fill composite, condensed with a plugger, applied celluloid strip to produce a flat surface, then cured for 20 seconds with an intensity of 600 mW according to the manufacturer's instructions.

Group 2: The cavity surface was etched with 37% phosphoric acid on the enamel margin cavosurface, washed, and dried. Total etch bonding was applied with microbrush and cured for 20 seconds. The cavity was filled with 2mm-thick Tetric N-Ceram Bulk Fill composite measured with marked probe, condensed with a plugger, applied celluloid strips to produce a flat surface, then cured for 20 seconds with 600 mW intensity according to the manufacturer's instructions. The second layer was added later with thickness of 2 mm and cured for 20 seconds.

Submersion in Methylene Blue

After all the samples have been filled, the apex were covered with dental wax and the entire part was coated with two layers of nail polish except on the 1 mm around the restoration. Samples were incubated in physiological saline for 24 hours at 37 ° C using incubator. Sample then dried with tissue and submersed in a 0.3% methylene blue solution at 37 ° C for 24 hours in the incubator. After submersion, samples were washed with aquadest for 10 seconds then dried. The samples were cut in buccal-lingual direction starting from the occlusal surface at the center of the restoration to obtain mesial and distal sections. Fixation of every sample was done using the dental wax in block form and dye penetration was measured using the scoring method according to Popoff et al., as follows:¹⁵

0 = no penetration into interfacial-tooth-composite.

1 = dye penetration into interfacial-tooth-composite less than half of the lateral wall of the cavity.

2 = dye penetration into the interfacial-tooth-composite up to more than half the lateral wall of the cavity, but not affecting axio-pulpal wall.

3 = dye penetration into interfacial-tooth-composite along the lateral wall of the cavity and affecting the axio-pulpal wall.

4 = dye penetration into the interfacial-dental composite along the lateral wall of the cavity, affecting the axio-pulpal wall, and extending to the base of the pulp wall.

Observation was done using stereomicroscope (S02 1x-500x 2MP USB Digital Microscope Portable 8-LED Electron Endoscope Magnifier, China) at 40x magnification. Results of scoring were in the form of non-parametric ordinal data and analyzed using Mann-Whitney test.¹⁶

Results

Microleakage measurement was done by observation dye penetration at restoration of bulk fill composite resin then classified based on scoring criteria. The use of scoring as semi-quantitative method was considered to be the most representative method for microleakage study using dye penetration and sectioning method in two dimensions.

Based on Table 1, the result of group with bulk fill technique on 4 mm deep cavity showed score 0 in 2 teeth, score 1 in 9 teeth and score 4 in 1 tooth. The total number of samples in this group was 12 teeth. In the incremental technique group, out of 12 samples, 7 teeth scored 0 and the other 5 teeth scored 1.

Groups	Technique	Score					N	P
		0	1	2	3	4		
I	Bulk fill technique	2	9	-	-	1	12	0.012*
II	Incremental technique	7	5	-	-	-	12	

Table 1. Scoring results on methylene blue penetration into restoration.

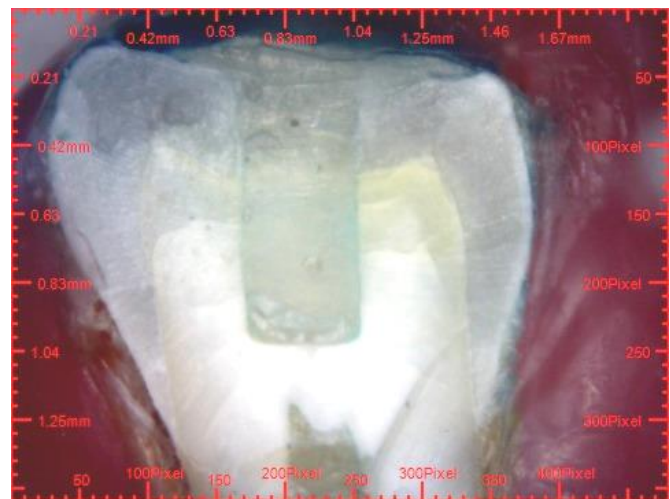


Figure 1. Microleakage with score of 0.

Mann-Whitney test analysis results showed that microleakage score of both groups had significant differences with value of $p = 0.01$ at $p < 0.05$. Group with incremental technique resulted in smaller microleakage compared to the bulk fill technique.

Discussion

Microleakage is one of the factors that play a role of failure in composite resin restoration. Microleakage occurred due to the break of bonding between cavity walls and restorative materials caused by polymerization shrinkage phenomenon. Composite resin bulk fill as an innovation in the development of composite resin, claimed to have minimal polymerization shrinkage, although placed in a deep cavity (4-5 mm).¹⁷

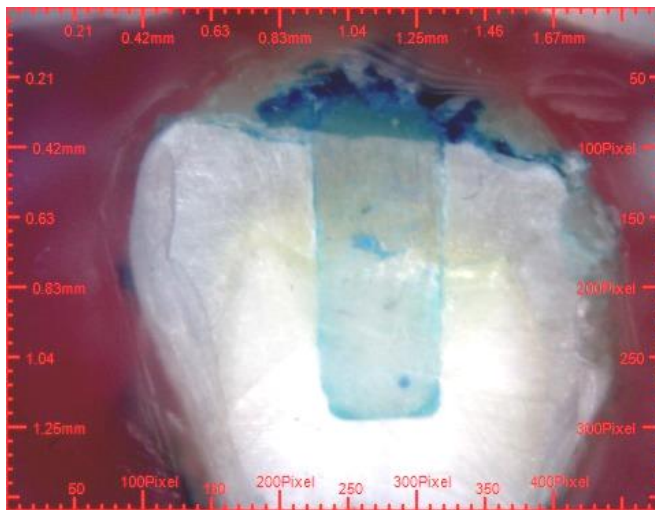


Figure 2. Microleakage with score of 4.

The polymerization of the composite resin occurs in two stages, the first being the activation of camphoroquinone (CQ) and the second is propagation reaction. During the first stage, CQ will be excited through activation with blue light (400-550 nm) therefore hydrogen from organic amine (co-initiator) will be attracted and form free radicals. Free radicals will react with monomer molecules starting from the center and polymerization reactions will continue to spread around it. The second stage is propagation involves adding chains through the addition of a cross-linked covalent monomer to a maximum degree of conversion. Maximum degree of conversion means the maximum number of unsaturated bonds ($C = C$) converted to saturated bonds ($C-C$).¹⁸

Initially, the distance between molecular monomers is about 4 \AA . During the polymerization process, the distance is replaced by a covalent bond with a distance of about 1.5 \AA . The volume contraction that occurs as small monomer units is converted into long polymer chains is called polymerization shrinkage. In composite resins, this shrinkage may range from less than 1% to 6%.¹⁸

Polymerization shrinkage will cause shrinkage stress on the interfacial surface of composite resin with enamel & dentin structure. The amount of stress is estimated at 13-17 Mpa. The application of bonding agent is an attempt to compensate the stress shrinkage because it can increase the adhesion bond strength between composite resin and tooth structure up to 20 MPa.¹⁹ However, the strength of the polymerization contraction in gross total can

exceed the bonding strength, therefore causing detachment of the bonding and produce a microscopic gap that prone to caries recurrence.²⁰

The bulk fill composite used was Tetric N-Ceram Bulk Fill from the Ivoclar Vivadent. Tetric N-Ceram Bulk Fill is classified as packable due to its large filler particle proportion (73.1%) and is indicated for posterior restoration. The unique feature of this composite compared to other bulk fill composites is the addition of Ivocerin, a photoinitiator. Ivocerin was claimed to have better light absorption properties compared to CQ.²¹

The curing technique may affect the depth of cure of the composite resin. Therefore, the light curing unit, light intensity, wavelength, and radiation distance were controlled to create the same treatment for all samples. The intensity of light and wavelength used was adjusted to the manufacturer's instructions above 500 nm with a wavelength of about 450 nm. Based on Dunne & Millar, the closer the radiation distance is, the greater the depth of cure of the composite resin.²² Therefore, the irradiation was as close as possible (attached to the surface of the composite resin) in order to obtain maximum depth of cure.¹⁶

Microleakage was observed through the penetration of methylene blue on the interfacial surface of the bulk fill composite resin with the cavity wall. Methylene blue was used due to its low molecular weight, affordable cost, and easy to use. The molecular weight of the methylene blue is lower than the average molecular weight of bacteria so it is considered representative enough to identify the microleakage of composite resin restoration.¹¹ The scoring method used to assess microleakage has been used in a study by Popoff et al.¹⁵ The scoring method is considered a semiquantitative method because the assessment is based solely on the observation and interpretation of the observer. In addition, one of the limitations of this method is that it cannot quantitatively measure the microleakage because the sample cut is only done on one side (bucco-lingual) only. Nevertheless, this method is still acceptable and widely used to quantify microleakage semiquantitatively.²³

The bulk technique group showed more samples subjected to microleakage compared to incremental technique. Meanwhile, in incremental

technique group, more samples found without microleakage (score 0). This is consistent with the study of Bugalia et al., which stated that incremental techniques produce smaller microleakage compared to bulk techniques.²⁴ Through incremental techniques, light penetration was optimized due to the reduced volume of the polymerized material, hence the light intensity that penetrated into the material was still high and therefore created optimal polymerization.²⁵ In accordance with the statement Anusavice, the thicker placement of a composite resin, the more light intensity reduced because of material density and absorption by composite resin material.²⁶ The addition of a composite resin second layer after placement of a first layer will compensate the shrinkage of the first layer by closing the gap due to the shrinkage of the first layer volume.²⁴

Microleakage score of 1 also found in incremental technique group. It can be explained by Welime statement which stated that in incremental technique, it was possible that the volume of composite resin applied in incremental technique will be less than the initial volume.²⁵ Therefore, there would be deformity of the cavity wall which resulted in an interfacial gap. Many studies have attempted to examine incremental techniques that can produce the maximum marginal seal. In addition to the horizontal layering technique used in this study, there are several techniques that have been studied such as oblique, centripetal, and horizontal split techniques.²⁷ In this study, microleakage still found in entire experimental groups, but there was a significant difference between bulk technique and incremental technique. Microleakage observed in the incremental group was smaller than in bulk technique.

Conclusions

Restoration using incremental technique proved to result less microleakage compared to bulk fill technique. Therefore it was recommended for clinical use for composite resin restoration. Further research can be done to investigate more specific incremental techniques, such as incremental oblique and centripetal techniques. In addition, the biocompatibility of bulk fill packable composites in deep and adjacent-to-pulp cavities also need to be studied.

Declaration of Interest

None declared.

Conflict of Interests

Conflict of interests are declared none.

References

1. Hatrick CD, Eackle S. Dental materials: Clinical applications for dental assistants and dental hygienists. Missouri: Elsevier;2016:74.
2. Mahajan V, Bhondwe S, Doot R, Balpande R, Bhandari S, Dahiwale SS. Failure in Composite Restoration. *Int J Dent Res* 2015;3(3): 10-4.
3. Bohaty BS, Ye Q, Misra A, Sene F, Spencer P. Posterior Composite Restoration Update: Focus on Factors Influencing Form and Function. *Clin Cosmet Invest Dent* 2013;5:33-42.
4. Abolghasemzade F, Alaghehmand H, Judi R. The Reasons for Composite Restoration Replacement in Restorative Department of Babol Dental School. *Jentashapir J Health Res* 2015;6(6): 7-10.
5. Kopperud SE, Tveit AB, Gaarden T, Sandvik L, Espelid I. Longevity of Posterior Dental Restorations and Reasons for Failure. *Eur J Oral Sci* 2012;120(6):539-48.
6. Nisha G, Amit G. Textbook of operative dentistry, 3rd Edition. New Delhi: Jaypee 2015;65,273,321.
7. Oliveira L, Duarte S, Araujo C, Abrahão A. Effect of Low-elastic Modulus Liner and Base as Stress-absorbing Layer in Composite Resin Restorations. *Dent Mater* 2010; 26(3):159-69.
8. Kay E. Dentistry at a glance. Oxford: John Wiley & Sons 2016;103.
9. Bagis YH, Baltacioglu IH, Kahyaogullari S. Comparing Microleakage and The Layering Methods of Silorane Composite in Wide Class II MOD Cavities. *Oper Dent* 2009;24(5):578-85.
10. Jackson RD. 2012. Placing posterior composites: A new, practical, efficient techniques Available at: "<http://www.oralhealthgroup.com/features/placing-posterior-composites-a-new-practical-efficient-technique/>". Accessed August 18th 2017.
11. Sakri MR, Koppal P, Patil BC, Haralur SB. Evaluation of Microleakage in Hybrid Composite Restoration with Different Intermediate Layers and Curin Cycles. *J Dent Allied Sci* 2016;5(1):14-20.
12. Zorzin J, Maier E, Harre S, et al. Bulk-fill Resin Composites: Polymerization Properties and Extended Light Curing. *Dent Mater* 2015;31(3): 293-301.
13. Orłowski M, Tarczydło B, Chalas R. Evaluation of Marginal Integrity of Four Bulk-fill Composite Materials: In Vitro Study. *Sci World J* 2015;1-8, <http://dx.doi.org/10.1155/2015/701262>.
14. Parolia A, Adhailiya N, Porto D, Mala K. A Comparative Evaluation of Microleakage around Class V Cavities Restored with Different Tooth Colored Restorative Materials'. *Oral Health Dent Med J* 2014;13: 1-7.
15. Popoff DA, Soncalves FS, Magalhaes CS, Moreira AN, Ferreira RC, Mjor IA. Repair of Amalgam Restorations With Composite Resin and Bonded Amalgam: A Microleakage Study. *Brazil Dent J* 2011;22(6):799-803.
16. Eriwati YK, Khasanah KN, Harap SA, Triamningsih HS. Effect of Different Light-Curing Sources on Diametral Tensile Strength of Bulk Fill Composite Resins. *J Int Dent Res* 2018;11(2):491-4.
17. Yavuz I, Aydin H. New Direction for Measurement for Microleakage in Cariology Research. *J Int Dent Med Res* 2010;3(1):19-24.

18. Narene AVK, Veniashok B, Subbiya A, Vivekanandhan P, Sukumaran VG. Polymerization Shrinkage in Resin Composite- A Review. Middle-East J Sci Res 2014;21(1):107-12.
19. Fabianelli A, Pollington S, Davidson C, Cagidaco C, Gorracco C. The Relevance of Micro-Leakage Studies. Int Dent J 2011;9:64-70.
20. Matinlinna JP, Mittal KL. Adhesion Aspects in Dentistry. Boston: VSP;2009;37.
21. Leprince J, Palin, W, Vanacker, J, Sabbagh, J, Devaux, J, Leloup, G. Physico-mechanical Characteristic of Commercially Available Bulk-fill Composites. J Dent 2014;42:993-1000.
22. Dunne SM, Millar BJ. Effect of Distance from Curing Light Tip to Restoration Surface of Composite Resin. Primary Dent Care 2008;14(4):147-52.
23. Yavuz I, Aydin AH, Ulku R, Dulgergil TC, Akdag MZ. New Technique: Measurement of Microleakage Volume in The Marginal Gaps of The Dental Restorations. Biotechnol & Biotechnol Eq 2006;19(3):184-91.
24. Bugalia A, Yujvender, Bramta N, Kharbanda J, Atri M, Kharbanda G. Effect of Placement Techniques, Flowable Composite, Liner and Fibre inserts on Marginal Microleakage of Class II Composite Restorations. J Evid Based Med Healthc 2015;2(32): 4773-87.
25. Welime PK. Placement Technique and Microleakage in Posterior Composite Restorations. J Res Dent 2014;2(3): 136-43.
26. Anusavice KJ. Phillips' Science of Dental Materials, 11th Edition. Philadelphia: WB Saunders;2014:406-13.
27. Nadig RR, Bugalia A, Usha G, Karthik J, Rao R, Vedavathi B. Effect of Four Different Placement Techniques on Marginal Microleakage Class II Composite Restorations: An In Vitro Study. World J Dent 2011;2(2):111-6.