

A review on reducing the incidence of postoperative ileus by chewing

by Tintin Sukartini

Submission date: 06-Jan-2022 09:15AM (UTC+0800)

Submission ID: 1737943692

File name: reducing_the_incidence_of_postoperative_ileus_by_chewing_21.pdf (446.88K)

Word count: 7029

Character count: 37537



[View Article](#)

A review on reducing the incidence of postoperative ileus by chewing gum, consuming coffee or warm water post abdominal surgery

Tria Anisa Firmanti ¹, Tintin Sukartini, Ilya Krisnana

¹⁶ Faculty of Nursing Universitas Airlangga, Surabaya, Indonesia

ARTICLE INFORMATION

Received: March 03, 2020
Revised: March 23, 2020
Available online: April 30, 2020

KEYWORDS

Chewing gum; Coffee; Water; Ileus; Nausea

CORRESPONDENCE

Phone: 081331802409
E-mail: tintin-s@fkp.unair.ac.id

ABSTRACT

Background: Postoperative ileus is the main complication post abdominal surgery; it signs two or more periods of vomiting and nausea, intolerance of diet more than 24 hours, inability to pass flatus more than 24 hours, and abdomen distension. Several studies are stating that interventions chewing gum, consuming coffee, and drinking warm water can reduce the incidence of postoperative ileus.

Objective: Collects the evidence for effect chewing gum, consuming coffee, and warm water to reduce postoperative ileus.

Method: This systematic review is arranged based on literature studies from five databases last five years, such as Scopus, Sciencedirect, Proquest, and Oxford, with the comprehensive survey, which conducted according to the guidelines in the PRISMA. We searched for studies with the keyword "chewing gum" OR "coffee" OR "warm water" AND "postoperative."

Result: We selected 215 articles from an electronic database, and 17 articles with Randomized Control Trials (RCTs) method included. The sampling of selected items in this systematic review carried for five months to 1 year, from January to December 2010 - 2017, obtained 20 to 975 samples. There was a significant effect of chewing gum, consuming coffee, and warm water reduced postoperative ileus incidence without side effects.

Conclusion: Chewing gum, consuming coffee, and warm water, are effective, safe, and not expensive to reduce the incidence of postoperative ileus and improve recovery post abdominal surgery.

INTRODUCTION

Postoperative ileus, gastric distension, and abdominal distension are the most common occurrence in abdominal surgery ^{1,2}. Postoperative ileus is the occurrence of two periods of nausea and vomiting or more, more than 24 hours of tolerance to the diet, flatus does not appear more than 24 hours, and abdominal distension ³. Postoperative ileus and abdominal distension increase due to prolonged abdominal distension, nausea, vomiting, abdominal pressure, cramps, and pain in the patient, which causes prolonged recovery process ^{4,5}. Protracted postoperative ileus can reduce patient comfort, increase morbidity, mortality, and increase the length of hospital stay, higher maintenance costs, and delayed first food intake and failure of mobilization ⁶. Several strategies and interventions have been carried out to prevent postoperative ileus both

pharmacologically and non-pharmacologically, such as early mobilization and giving mineral water two hours after surgery but these interventions have not been effective in reducing postoperative ileus in abdominal surgery ⁶

Postoperative ileus reported as 10 to 30% occurring in cases of abdominal surgery, according to previous studies, the incidence is different from one survey to another ⁷⁻¹⁴. Postoperative ileus in Korea reported to be around 17.4% - 24% is a common complication that occurs after major abdominal surgery ¹⁵. Postoperative ileus incidence has happened in post-laparotomy gynecological surgery patients in China 14%¹⁶. An average of 10%-30% of post abdominal surgery patients have postoperative ileus ¹⁷. Postoperative ileus in colorectal surgery was 14%, research conducted in the USA ¹⁸. Postoperative gastric patients in Indonesia, approximately 30%-50%, experienced

<https://doi.org/10.30595/medisains.v18i1.6901>

©(2020) by the Medisains Journal. Readers may use this article as long as the work is properly cited, the use is educational and not for profit, and the work is not altered. More information is available at [Attribution-NonCommercial 4.0 International](#).

prolongation of bowel sounds, and flatus 24 to 72 hours. Postoperative ileus problems cannot be resolved four days after surgery reported about 50% of events and will become prolonged postoperative ileus (PPOI) if not resolved for more than five days.

Postoperative ileus can increase due to pain fiber stimulation, excessive sympathetic nerve stimulation, and stress response that is influenced by nitric oxide release, intestinal vasoactive peptide, and P substance. These mechanisms occur because of the reaction of inhibited neurotransmitter in the abdomen manipulated and peritoneal irritation¹⁶. Postoperative ileus symptoms include abdominal discomfort, nausea, and vomiting, which are the leading causes of delayed enteral diet and patient recovery. The factors affecting are visceral manipulation, inflammatory mediators, anesthesia, and giving opioids to reduce pain¹⁵. Risk factors that can increase the incidence of postoperative ileus are cigarette users, low body weight, oral antibiotics in pre-surgery, preparation for abdominal repair, and surgery³. Patients with postoperative ileus will cause delayed oral food intake, wound healing, decreased immune system, increased septic complications, and hospital stay. It is essential to restore the digestive system function of postoperative patients to normal as soon as possible and prevent postoperative ileus^{4,5,19-21}.

The most important part of postoperative patient care that nurses must do is increasing the prevention of postoperative complications. Some studies suggested that the prevention of postoperative complications can reduce complications and problems in preoperative and postoperative care^{22,23}. Nursing interventions provided to prevent complications of the digestive system include exercise in patients, pain management, early postoperative mobilization, initiation of initial oral intake²⁴⁻²⁷. Chewing Gum is reported to reduce postoperative ileus² is a safe, comfortable and inexpensive intervention, chewing gum is one type of sham feeding by seeing, smelling and eating without swallowing so that it can stimulate the cephalic vagal pathway¹⁵. Responses of giving warm water to postoperative patients also have positive effects on intestinal motility such as, eliminating gastrointestinal spasm and restoring⁶ intestinal peristalsis. Giving a little water to the patient undergoing bile duct surgery during the early postoperative stage is useful in regaining digestive function and preventing oral complications²². The next intervention that also provides health benefits is coffee, and research showed that consuming coffee after colectomy surgery is safe and can restore intestinal motility quickly²⁸.

Based on the evidence-based on some literature on abdominal postoperative interventions, this systematic review was done to gather evidence that chewing gum, consuming coffee, and warm water can reduce postoperative intestinal ileus. The previous systematic review only discussed the benefits of chewing gum or drinking coffee

only, while in this systematic review discussed together with the intervention of chewing gum, drinking coffee, and warm water to reduce post-operative ileus.

METHOD

Search strategy

We used PRISMA statement guidelines in preparing this systematic review. We searched the articles through the Scopus, Sciencedirect, Proquest, and Oxford database, by using the keywords "chewing gum" OR "coffee" OR "warm water" AND "postoperative" (Table 1).

Table 1. Search List

Find the database	Keyword
Scopus = 32	chewing gum "OR"
Science Direct = 63	coffee "OR"
Proquest = 98	warm water "AND"
Oxford = 22	Postoperative

Study Selection

The articles we chose were the original articles published in the last five years (2015-2019). The articles discuss the intervention of chewing gum or consuming coffee or warm water to reduce postoperative ileus in post abdominal surgery patients. Paper that uses the Randomized Control Trial (RCTs) research method included, and we exclude articles that discuss chewing gum or consuming coffee or warm water combined and or compared with other interventions.

Data extraction

The articles criteria included in this systematic review were (1) articles related to the prevention of postoperative ileus, (2) the patient's criteria were postoperative abdominal patients, (3) the interventions carried out by giving chewing gum, warm water and coffee, (4) The expected research results are the first time bowel noise, flatus, defecation and length of stay (LOS).

RESULTS

The article search results obtained 215 articles consisting of 32 Scopus articles, 63 Science Direct articles, 98 Proquest articles, and 22 Oxford articles. The identification was according to the inclusion and exclusion criteria contained 11 items on the chewing gum intervention, six reports on coffee, and warm water intervention. The remaining 194 items excluded because they were not original articles, in the form of systematic reviews, did not use the RCTs method, in combination with other interventions, and the respondents were not postoperative abdominal patients. The expected results in 17 articles that have identified showed improvement in the first time bowel sounds, flatus, defecation, and LOS.

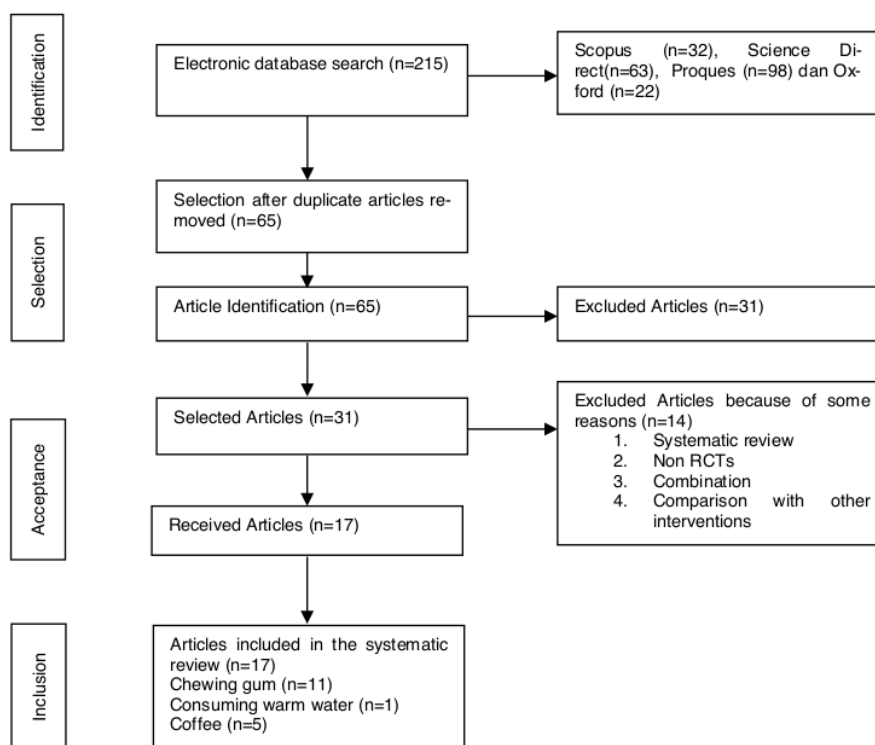


Figure 2. PRISMA flow diagram

Study characteristics

The article selection process has included in the PRISMA flow diagram presented in figure 1, and sample characteristics, intervention, outcome, and result in the included studies described in table 2. The sampling of selected articles in this systematic review was carried out for five months to 1 year, from January to December 2010-2017 and obtained 200 to 1000 samples, because there was a drop out in the study, the respondents became 20-975 in each group.

The selected articles in this systematic review used the division of intervention and nonintervention group; there were also articles which consisted of 3 groups. Fourteen paper was composed of two groups, including an intervention group and a nonintervention group. The intervention group, and the nonintervention group with standard post-operative interventions. The regular gum-chewing group, and the nicotine gum-chewing group. The coffee-drinking group and the control group with routine room interventions, the coffee-drinking group and the warm water drinking control group, the coffee-drinking group and the drinking water control group, the friendly drinking water group and the control group with routine interventions in the room. The articles were consisting of 3 groups; the first was the xylitol gum group, the nonxylitol gum group, and

the control group. The second articles were the coffee drinking group with caffeine, the decaffeinated coffee drinking group, and the drinking water group, and the third articles were the chewing gum group, the coffee-drinking group, and the warm water-drinking group.

Interventions on these patients carried out in several countries, including Korea, Japan, Turkey, Iran, Australia, Thailand, Taiwan, the Netherlands, the United Kingdom, and the USA. The following inclusion criteria patients over 18 years old, scheduled to be open elective or laparoscopic bowel surgery, fasting for 8 hours preoperative, stable vital signs, no general complications during surgery, no history of diabetes, hypothyroidism, neuromuscular disease, diarrhea, chronic constipation, abdominal irritation syndrome, gastroesophageal reflux and exclusion criteria for swallowing difficulty or risk of choking (post-stroke), risk of aspiration, planned stoma, cognitive impairment, history of analgesic use, electrolyte imbalance, pneumonia or peritonitis, history of abdominal surgery, postoperative complications, dental problems, wearing dentures, not understanding informed consent, patients with acute or chronic cardiovascular disease, liver disease, kidney disease, pregnancy, breastfeeding, patients with sudden surgery, and hypersensitive to coffee.

Tabel 2. Article characteristics identification

Author	Sample	Intervention	Outcome	Result
Manal mahmoud, Safaa Hussein Mohammad ²⁹	Hamet Appendectomy (240)	Chewing gum Time: 2 hours postoperation Duration: 15 minutes Frequency: every 2 hours until flatul	Bowel sound; Feeling hunger; Flatus; Defecation; Length hospital stay.	Shortened digestive function and reduce postoperative ileus symptoms
Lee H, Cho CW, Liver Yoon S, Suh K, Ryu GH ³⁰	Transplantation	Chewing gum Time: postoperative Duration: 15 minutes Frequency: 3 times a day	Flatus; Sips water; Diet; Energy intake; Length hospital stay	Postoperative ileus and oral intake do not shorten
Pilevarzadeh M ³¹	Cholecystectomy surgery(40)	Chewing gum Time: full consciousness postoperative Duration: 20 minutes Frequency: 3 times a day until oral intake	Bowel sound; Flatus; Defecation	Time bowel sound, flatus, and defecation reduced
Lee JT, Hsieh M, Cheng P, Lin J ³²	Caesarean section (120)	Chewing gum Time: 2 hours postoperation Duration: 15 minutes	Bowel sounds; Flatus; Defecation	Faster flatus time, shorter defecation time and bowel sound
E. M. De Leede, N. J. Van Leersum, H. M. Kroon, V Van Weel, J. R. M. Van Der Sijp, B. A. Borsing ³³	Elective laparotomy or laparoscopic intestinal re-section or non-intestinal surgery by laparotomy (2000)	Chewing gum Time: day of operation Duration: 30 minutes Frequency: 3 time until hospital discharge	Length of stay; Intestinal recovery; Complications	Length of stay and intestinal recovery does not shrink, and complications reduced
C. M. Byrne, A Young, J. M. Young, M. J. Solomon, C. J. Young ³⁴	Elective open or laparoscopic bowel surgery (158)	Chewing gum Time: postoperation Duration: 15 minutes, until a normal bowel motion	Length of stay; Flatus; Bowel motion; Complication; Pain; Total morphine equivalent (TMEq)	Digestive function return faster, and analgesic use reduced
Nathawong Sangkomkamhang U, Sangkomkamhang T ³⁵	Laparotomy for benign gynecologic diseases (112)	Chewing gum Time: 6 hours postoperatively Duration: 15 minutes until flatul	Flatus; Liquid tolerate; Diet; Vomiting; Anti-emetic requirement	Flatus time, diet and vomiting reduced. Liquid tolerance time, nausea, anti-emetic and length hospital stay are short

Author	Sample	Intervention	Outcome	Result
Lambrichts DP, Boersema GSA, Tas B, Wu Z, Menon AG ³⁶	Elective oncological colorectal surgery (40)	Chewing gum Time: 2 hours preoperation and half an hour at a time postoperation Frequency: 3 times a day postoperation until defecation and solid food tolerance	Defecation; Solid food toleration; Flatulence; Length of stay; Postoperative complications; Postoperative mortality; Postoperative opioid use; Pain score; Nausea; Regurgitations; Vomiting; Chewing gum use; Inflammatory parameters (e.g., CRP, WBC, short and IL-6); Blood Pressure; Body temperature	Defecation, solid food tolerance, flatulence, length of stay, postoperative complications, postoperative mortality, pain scores, inflammatory parameters, and postoperative complications are reduced.
Atkinson C, Penfold CM, Ness AR ³⁷	Elective colorectal resection: colorectal neoplasia (invasive cancer or dysplasia), ulcerative colitis or diverticular disease (402)	Time: 1 st postoperative morning Duration: 10 minutes, Frequency: 4 times a day for five consecutive days or until discharge (if less than five days)	Length of stay; Bowel movement Flatulence; Bowel sounds; patient-reported abdominal pain, nausea, vomiting, not return with chewing solid food consumption and tolerance, and quality of life; and clinical complications and death	Intestinal function or hospital stay can be improved, but return with chewing solid food consumption and tolerance, and quality of life, and clinical complications and death.
Yildizeli S, Deniz S, Effect ³⁸	Cholecystectomy (40)	Chewing gum Time: after full consciousness; Duration: 20 minutes Frequency: each time after until oral intake	Bowel sounds; Flatus; Defecation	Paralytic ileus is reduced
Rabiepoor S, A, Navaei J, Khalkhali HR ³⁹	Elective cesarean section (100)	Coffee Time: 8, 12 and 20 hours postoperative, Control group; Dosis: 100 cc coffee Hot water Time: 8, 12 and 20 hours postoperative; Dosis: 100 cc	Bowel sound; Flatus; Defecation; Time to first flatulence	Time to first flatulence is reduced
Dulskas A, Klimovskij M, Vitkauskienė M, Samalavicius NE ⁴⁰	Elective laparoscopic colectomy (105)	Coffee Group 1 Time: postoperative morning; Dosis: 100 ml coffee with caffeine 100; Frequency: 8:00 AM, 12:00 PM, and 4:00 PM until a bowel movement Group 2 Time: postoperative morning; Dosis: 100 ml coffee without caffeine; Frequency: 8:00 AM, 12:00 PM, and 4:00 PM Group 3 Time: postoperative morning; Dosis: 100 ml water; Frequency: 8:00 AM, 12:00 PM, and 4:00 PM until bowel movement	Bowel movement (time from postoperative until defecation); Solid food tolerance (no vomiting); Flatulence	Bowel movement and of solid food tolerance decreases with decaffeinated coffee intervention, but flatulence does not decrease

Author	Sample	Intervention	Outcome	Result
Goymen A, Simsek Y, Oskaplan SE ⁴¹	Caesarean section (100)	Group 1 Chewing gum Time: 2 hours postoperative; Frequency: 4-hour intervals until defaecation Group 2 Coffee Time: 2 hours postoperative; Dosis: 100 ml; Frequency: 3 times a day until defaecation Group 3 Hot Water Time: 2 hours postoperative; Dosis: 100 ml; Frequency: 4-hour intervals until defaecation for three times a day	Bowel movement Flatus Defaecation	Flatus and defecation is reduced by chewing gum dan coffee intervention
Hayashi Tsunoda Shiraishi Kusanagi H ⁴²	K, LVR (laparoscopic ventral rectopexy) (46)	Group 1 Coffee Time: 5 hours postoperative Dosis: 100 ml (50-60 °C) Frequency: 3 times daily at 9:00 AM, 1:00 PM, and 5:00 PM (1st day postoperative) until defaecation Group 2 Water Time: 5 hours postoperative Dosis: 100 ml (50-60 °C) Frequency: 3 times daily at 9:00 AM, 1:00 PM, and 5:00 PM (1st day postoperative) until defaecation	Radiopaque Flatus Defecation Bowel movement	Bowel movement return faster with coffee intervention
Caliskan N, Bulut H, Konan A. ²²	Laparoscopic cholecystectomy surgeries (60)	Warm water Time: 4 hours postoperative Dosis: 200 ml at 98.6°F (37 °C) Duration: 15 minutes	Nausea/vomiting Mobilization Flatus Defecation	Warm water reduces the time of flatus and has a good effect on the bowel movement
Kemal G, Isa Aykut O, M, Ozgu G., Varol G., Mehmet G., Muzaffer S. ²⁸	Abdominal hysterectomy and bilateral salpingo-oophorectomy (114)	Coffee Time: postoperative morning Dosis: 100 mL Frequency: 10:00 AM, 3:00 PM, and 7:00 PM, ²	Flatus Defecation Bowel movement Solid diet tolerance ²	Intestinal motility and solid diet tolerance are faster with coffee intervention

Outcome

Chewing gum

The result of 11 articles on chewing gum intervention showed the first time bowel noise, flatus, defecation, and LOS faster than standard hospital interventions. First study got the first time bowel sounds in the intervention group (mean = 10.05, SD = 1.44) faster than the control group (mean = 15.22, SD = 2.02), first time flatus in the intervention group (mean = 19.46, SD = 1.87) faster than the control group (mean = 24.43, SD = 1.80), the first defecation time in the intervention group (mean = 19.74, SD = 1.84) faster than the control group (mean = 31.03, SD = 8.28), LOS time in the intervention group (mean = 28.81, SD = 12.13) faster than the control group (mean = 35.63, SD = 7.32)²⁹.

The second study found the results of the first time flatus in the intervention group (69.0 (66.1- 82.9) hours) faster than the control group (72.0 (57.6-77.2) hours), the LOS time in the intervention group (21 (15-37) days) more quickly than the control group (26 (16-42) days)³⁰. The third study found that the first flatus time in the intervention group (21.05 ± 12.8 hours) was faster than the control group (40.8 ± 15.9 hours), the first time defecation in the intervention group (38.1 ± 29.8 hours) was faster than the control group (58.25 ± 18.6 hours). The first time bowel noise in the intervention group (4 ± 0.02 hours) was faster than the control group (1.9 ± 1.2 hours)³¹.

The fourth study found that the first time bowel noise in the intervention group of chewing xylitol gum (6.9 ± 1.7 hours) faster than the intervention group of chewing regular gum (8.0 ± 1.6 hours) more quickly than the control group (12.8 ± 2.5 hours). The first time flatus in the intervention group of chewing xylitol gum (16.6 ± 2.9 hours) faster than the intervention group of chewing regular gum (17.5 ± 2.6 hours) more quickly than the control group (24.3 ± 4.5 hours), the first time defecation in the intervention group of chewing Xylitol gum (42.2 ± 5.6 hours) was faster than the intervention group of chewing regular gum (42.4 ± 6.2 hours) faster than the control group (43.4 ± 6.9 hours)³².

The fifth study found the first time flatus in the intervention group (23 (14–45) hours) faster than the control group (24 (13–48) hours), the first time defecation in the intervention group (52 (29–79) hours) faster than the control group (60 (25–88) hours). The LOS in the intervention group (7 (5–10) days) was the same as the control group (7 (5–10) hours)³³. The sixth study got the results of the first time flatus in the intervention group (42.0 (2.9) hours)³ was faster than the control group (58.0 (8.2) hours), LOS in the intervention group (5.8 days) was faster than the control group (6.1 days)³⁴.

The seventh study got the results of the first time flatus in the intervention group (20.3 ± 8.4 hours) faster than the control group (27.3 ± 7.9 hours), LOS in the intervention

group (6.1 ± 0.3 hours) more quickly than the control group (6.1 ± 0.4 hours)³⁵. The eighth study found the first time flatus in the intervention group of chewing nicotine gum (1.00 [1.00–1.00] hours) faster than the intervention group of chewing regular gum (1.00 [1.00–22.25] hours), the first time defecation of intervention group of chewing nicotine gum (3.00 [1.75–4.00] hours) faster than the intervention group of chewing regular gum (3.00 [1.75–5.00] hours), LOS in the intervention group of chewing nicotine gum (4.50 [4.00–6.00] days) faster than the intervention group of chewing regular gum (5.50 [4.00–8.50] days)³⁶.

The ninth study found that the first time bowel noise in the intervention group (2 (1-3) hours) was the same as the standard intervention group (2 (1-3) hours), the first time flatus in the intervention group (2 (2-3) hour) is the same as the standard intervention group (2 (1-3) hours). LOS in the intervention group (2 (1-3) hours) was faster than the standard intervention group (3 (1-4) hours)³⁷. The tenth Study got the results of the first time flatus in the intervention group chewing gum (42.33 ± 1.42 hours) faster than the control group (49.20 ± 1.42 hours), the results of the first time defecation in the intervention group chewing gum (66.07 ± 2.36 hours) faster than the control group (78.37 ± 1.62 hours)³⁷.

The eleventh study got the result of the first time flatus in the intervention group (51.07 ± 19.63 hours) faster than the control group (87.83 ± 25.89 hours). The first time defecation in the intervention group (73.33 ± 30.29 hours) were faster than the control group (137.20 ± 44.05 hours), and LOS in the intervention group (7.63 ± 1.47 faster than the control group (9.47 ± 2.67 hours)³⁸.

Coffee and warm water

There were six articles on coffee and mild water intervention. First, the first study found that the first time bowel noise in the coffee intervention group (5.84 ± 1.41 hours) was faster than the warm water intervention group (6.16 ± 1.33 hours). The first time flatus in the coffee intervention group (17.28 ± 4.44 hours) faster than the warm water intervention group (22.54 ± 5.09 hours), the first time defecation in the coffee intervention group (37.22 ± 16.31 hours) was faster than the warm water intervention group (36.82 ± 16.35 hours)³⁹.

The second study found that the first time bowel noise in the decaffeinated coffee intervention group (3.00 ± 1.50) was faster than the caffeine coffee intervention group (3.75 ± 1.53) shorter than the drinking water group (4.14 ± 1.15). The time first flatus in the decaffeinated coffee group (1.47 hours) was faster than the caffeine coffee group (1.57 hours) faster than the drinking water group (1.77 hours). The LOS in the caffeinated coffee intervention group (6.0 days) was faster than the decaffeinated coffee intervention group (6.6) faster than the drinking water group (7.0 days)⁴⁰.

Third research got the first time result of intestinal noise in the chewing gum intervention group (300 (150-500)) faster than the coffee intervention group (320 (205-590)) more quickly than the warm water intervention group (385 (280-580)) more rapidly than the control group (405 (188-680) s), the first time flatus in the intervention group chewing gum (360 (200-600)) more quickly than the coffee intervention group (420 (300-650)) faster than the warm water intervention group (490 (345-705)) more rapidly than the control group (600 (380-903)), the first time defecation in the intervention group of chewing gum (802 (710-930)) longer than the intervention group of coffee (776 (502-960)), longer than the warm water intervention group (737 (490-910)) and faster than the control group (980 (804-1010))⁴¹.

The fourth study³ found that the first time bowel noise in the intervention group (35.6 ± 5.4) was faster than the control group (47.5 ± 11.7), the first time flatus in the intervention group (29.7 ± 4.9) was faster than the control group (41.6 ± 10.9). The first time defecation in the intervention group (42.0 ± 6.8) was faster than the control group (59.8 ± 14.6), and LOS in the intervention group (6.1 ± 1.1) was faster than the control group (7.4 ± 2.9)²⁸. The fifth study got the results of the first time flatus in the coffee intervention group ($55.1 (19.1,114.0)$) was faster than the water intervention group ($69.7 (20.7,141.6)$), the first time defecation in the coffee intervention group ($9.3 (0.5,47.1)$) was faster than the water intervention group ($12.6 (1.1,46.1)$)⁴².

15 article about the intervention of consuming warm water in the study got the result of the first time flatus in the intervention group (11.0 ± 4.2 hours) faster than the control group (18.6 ± 6.0 hours), the first time defecation in the intervention group (35.4 ± 12.5 hours) was faster than the control group (38.1 ± 12.7 hours) and LOS in the intervention group (24.4 ± 7.6 hours) was faster than the control group (23.8 ± 4.8 hours)²².

DISCUSSION

This systematic review was compiled based on the identification of 19 articles with RCTs method about the effect of chewing gum intervention, consuming coffee, and warm water to decrease the incidence of postoperative ileus in postoperative abdominal patients. Postoperative ileus is a postoperative abdominal complication characterized by prolonged bowel sounds, flatus, defecation, and causes LOS. Postoperative ileus is a cessation of intestinal motility in a coordinated and temporary manner after surgery to prevent the removal of the bowel of tolerance of oral diet contents⁴³. Some degree of postoperative ileus is not pathological response but a physiological and reasonable response to abdominal surgery according to some opinions in general⁵. Typical values for determining between pathological postoperative ileus there is still no significant opinion.

The duration of pathological postoperative ileus varies from 1-7 days, according to the researchers¹⁷. The results of physiological studies explained that gastric motility returned at 24-48 hours, small intestinal motility at 12-24 hours, and colonic motility at 3-5 days⁴⁵. Postoperative ileus requires appropriate action in overcoming problems arising from its pathological effects. The cooperation of all health workers is needed to achieve optimal digestion recovery and reduce the length of stay. Appropriate planning and communication are also required to develop as evidence-based standard operational procedure than is followed and carried out; there have been several interventions designed to reduce the number and timing of postoperative ileus lately⁴⁴.

Nineteen articles have identified in this systematic review that proved that the intervention of chewing gum, coffee, and consuming warm water could speed up the first time bowel sounds, flatus, defecation, and shortening LOS in postoperative abdominal patients. Chewing gum, coffee, and consuming warm water interventions are safe, inexpensive, secure. Without side effects, so they can be recommended as additional interventions on standard operational procedures in postoperative abdominal patients. The clinical characteristics of ileus are abdominal distension, inability to expel flatus, defecation, and defecation pain. These conditions can inhibit recovery, increase the LOS, and higher cost of care³⁷. Sham feeding with gum is a safe, inexpensive, and convenient method to reduce postoperative abdominal ileus surgery¹⁵.

Chewing gum and coffee consumption are comfortable, safe, and tolerable methods and reported to increase postoperative gastrointestinal motility⁴⁶. Chewing gum can increase intestinal motility by directly activating vagal cephalic reflexes that activate bowel myoelectric motion and stimulates the secretion of gastrointestinal hormones indirectly so that saliva and pancreatic fluid are produced; these reactions can encourage hormones and nerves to activate intestinal motility²⁹.

The intervention of consuming warm water in postoperative patients also has a positive effect on intestinal motility such as, eliminating gastrointestinal spasm and restoring intestinal peristalsis²². When heat-sensitive receptors in the hypothalamus stimulated, the effector's system emits a signal which causes peripheral vasodilation and perspiration. Medulla oblongata, as the vasomotor center of the brain stem, regulates changes in the shape of blood vessels, vasodilation of blood vessels is influenced by anterior hypothalamic. As a result of vasodilation of blood vessels will increase the blood flow of splanchnic (blood vessels of the gastrointestinal system).

The increased blood flow will carry the hormones that have been released by endocrine gland cells such as gastrin and motilin in the blood to circulated. These hormones will

have an excitatory effect along the intestinal wall and smooth muscle, causing intestinal motility⁴⁷. At the same time, coffee is a beverage that is known globally and has positive effects on health, including the cardiovascular system and central nervous system, as well as increasing feelings of comfort. According to Cohn, coffee has a good influence on the peristaltic and intestinal motility index when taken by adults^{39,48-50}.

Intervention procedure of chewing gum (sugar-free gum) was given 2 hours before surgery and or 2-6 hours after surgery for 15-30 minutes, giving frequency every 2-4 hours once a day until flatus and defecation appear or up to 5 days (if the patient comes home before five days). The intervention procedure for consuming warm water was given 4 hours after surgery for 15 minutes as much as 200 ml with a temperature of 37°C, the frequency of providing water was every 4 hours until bowel sounds, flatus or defecation appears. The coffee intervention procedure was given six hours-1 days after surgery, as much as 100 ml of decaffeinated coffee, the frequency of giving coffee was every 2-4 hours until bowel sounds, flatus or defecation appear.

The weaknesses in this systematic review were first; respondents who included in all cases of abdominal and non-intestinal abdominal surgery have not homogenized in any of the cases. Second, there was only one article about consuming warm water after surgery, so it cannot strengthen evidence of warm water in reducing postoperative abdominal ileus. Third, not all items included outcomes of first-time bowel noise, flatus, defecation, and overall length of stay.

CONCLUSIONS AND RECOMMENDATION

Postoperative abdominal ileus characterized by abdominal distension, prolonged bowel sounds, flatus, and defecation can be reduced by chewing gum intervention, consuming warm water, and coffee. The invasion of chewing gum, drinking coffee, and warm water enhances the recovery of digestive function by accelerating the first time bowel sounds, flatus, defecation, and the Length of Stay of postoperative abdominal patients. The intervention is safe, comfortable, secure, and no side effects, so it can be recommended as a standard operational intervention procedure in postoperative gastric patients.

REFERENCES

- Brenner ZR. Preventing postoperative complications. *J Nurs Manag.* 2000;31(12):17-22.
- Sayek I. *Basic Surgery*. Ankara, Turkey: Günes, Bookstore; 2004.
- Yang P, Long WJ, Li W. Chewing Xylitol Gum could Accelerate Bowel motility Recovery after Elective Open Proctectomy for Rectal Cancer. *2018;70(1):53-58.* doi:10.24875/RIC.18002428
- Kehlet H. Postoperative ileus, an update on preventive techniques. *Nat Clin Pract Gastroenterol Hepatol.* 2008;5(10):552-558. doi:10.1038/ncpgasthep1230
- Miedema BW, Johnson JO. Methods for decreasing postoperative gut dysmotility. *Lancet Oncol.* 2003;4(6):365-372. doi:10.1016/S1470-2045(03)01118-5
- Nanthawong, Sangkomkhang, & Sangkomkhang T. Gum Chewing for Stimulating Early Recovery of Bowel Function after Postoperative Benign Gynecologic Surgery, A Randomized Controlled Trial. *2016;24(4):247-254.*
- Chapuis P, Bokey L, Keshava A, Rikard M, Young C, Dent O. Risk factors for prolonged ileus after resection of colorectal cancer: an observational study of 2400 consecutive patients. *Ann Surg.* 2013;257(5):909-915. doi:10.1097/SLA.0b013e318268a693
- Moghadamyeghaneh Z, Hwang GS, Hanna M., Stamos MJ. Risk factors for prolonged ileus following colon surgery. *Surg Endosc.* 2016;30(2):603-609. doi:10.1007/s00464-015-4247-1
- Svatek RS, Fisher MB, Williams MB, Noguera-Gonzales GM, Urbauer DL, Dinney CP. Age and body mass index are independent risk factors for the development of postoperative paralytic ileus after radical cystectomy. *Urology.* 2010;76(6):1419-1424. doi:10.1016/j.urology.2010.02.053
- Vather R, Josephson R, Jaung R, Robertson J, Bissett I. Development of a risk stratification system for the occurrence of prolonged postoperative ileus after colorectal surgery: a prospective risk factor analysis. *Surgery.* 2015;157(4):764-773. doi:10.1016/j.surg.2014.12.005
- Artinyan A, Nunoo-Mensah JW, Balasubramaniam S, Beart Jr RW. Prolonged postoperative ileus-definition, risk factors, and predictors after surgery. *World J Surg.* 2008;32(7):1495-1500. doi:10.1007/s00268-008-9491-2
- Millan M, Biondo S, Fracalvieri D, Kreisler A. Risk factors for prolonged postoperative ileus after colorectal cancer surgery. *World J Surg.* 2012;36(1):179-185. doi:10.1007/s00268-011-1339-5
- Vather R, Trivedi S, Bissett I. Defining postoperative ileus: results of a systematic review and global survey. *J Gastrointest Surg.* 2013;17(5):962-972. doi:10.1007/s11605-013-2148-y
- Kim JM, Min GE, Yoo KH, Chang S-G, Jeon SH. Risk factors for postoperative ileus after urologic laparoscopic surgery. *J Korean Surg Soc.* 2011;80(6):384-389. doi:10.4174/jkss.2011.80.6.384
- Lee, Chan, Susie, Suh, Yoon, & Geol H. Effect of sham feeding with gum chewing on postoperative ileus after liver transplantation — a randomized controlled trial. *2016;30(9):1501-1507.* doi:10.1111/ctr.12849
- Tazegul, Secilmisa, Dogan, Yilmaz, Kebabcilar, Gencoglu, & Celik C. Gum chewing reduces the

- time to first defaecation after pelvic surgery: A randomised controlled study Analyzed per protocol Analyzed per protocol. *J Obstet Gynaecol.* 2014;35(5):494-498. doi:10.3109/01443615.2014.970146
17. Venara, Neunlist, Slim, Barbieux, Colas, Hamy S. Postoperative ileus: Pathophysiology, incidence, and prevention. *J ViscSurg.* 2016;153 (6):439-446.
 18. Muphy, Tevis, Kennedy S. Independent Risk Factors For Prolonged Operative Ileus Development. *JSurg Res.* 2016;201(2):279-285. doi:10.1016/j.jss.2015.10.047
 19. Holte K, Kehlet H. Postoperative ileus, progress towards effective management. *Drugs.* 2002;62(12):2603-2615. doi:10.2165/00003495-200262180-00004
 20. Leier H. Does gum chewing help prevent impaired gastric motility in the postoperative period? *J Am Acad Pract.* 2007;19(3):133-136. doi:10.1111/j.1745-7599.2006.00209.x
 21. Luckey A, Livingston E, Tache Y. Mechanisms and treatment of postoperative ileus. *Arch Surg.* 2003;138(2):206-214. doi:10.1001/archurg.138.2.206
 22. Caliskan N, Bulut H, Konan A. The Effect of Warm Water Intake on Bowel Movements in the Early Postoperative Stage of Patients Having Undergone Laparoscopic Cholecystectomy, A Randomized Controlled Trial. 2016;39(5):340-347. doi:10.1097/SGA.0000000000000181
 23. Yilmaz M. Effect of planned pre-operative teaching on the occurrence of post-operative complications and patient satisfaction. *Turkish J Res Dev Nurs.* 2002;4(1):40-50.
 24. Fearon KCH, Ljungqvist O, Von Meyenfeldt M, et al. Enhanced recovery after surgery: A consensus review of clinical care for patients undergoing colonic resection. *Clin Nutr.* 2005;24(2):466-477. doi:10.1016/j.clnu.2005.02.002
 25. Junger M, Schoenberg MH. Postoperative care in fast-track rehabilitation for elective colonic surgery. *Transfus Altern Transfus Med.* 2007;9(1):66-77. doi:10.1111/j.1778-428X.2007.00047.x
 26. Quin W, Neill J. Evidence for early oral feeding of patients after elective open colorectal surgery: A literature review. *J Clin Nurs.* 2006;15(6):696-709. doi:10.1111/j.1365-2702.2006.01389.x
 27. Zhou T, Wu XT, Zhou YJ, Huang X, Fan W, Li YC. Early removing gastrointestinal decompression and early oral feeding improve patients' rehabilitation after colectomy. *World J Gastroenterol.* 2006;12(15):2459-2463. doi:10.3748/wjg.v12.i15.2459
 28. Kemal Gungorduk M, Isa Aykut Ozdemir M, Ozgu Gungorduk M, Varol Gulseren M, Mehmet Gokcu M, Muzaffer Sancı M. Effects of coffee consumption on gut recovery after surgery of gynecological cancer patients: a randomized controlled trial. 2017;216(2):145.e1-e7. doi:10.1016/j.ajog.2016.10.019
 29. Mahmoud MH, Mohammad SH. Chewing gum for declining ileus and accelerating gastrointestinal recovery after appendectomy. 2018;5(4):277-284. doi:10.1515/fo-2018-0038
 30. Lee H, Cho CW, Yoon S, Suh K, Ryu GH. Effect of sham feeding with gum chewing on postoperative ileus after liver transplantation a randomized controlled trial. *Clin Transplant.* 2016;30(9):1501-1507. doi:10.1111/ctr.12849
 31. Pilevarzadeh M. Effect of Gum Chewing in the Reduction of Paralytic Ileus Following Cholecystectomy. 2016;9(1):405-409.
 32. Lee JT, Hsieh M, Cheng P, Lin J. The Role of Xylitol Gum Chewing in Restoring Postoperative Bowel Activity After Cesarean Section. 2016;18(2):167-172. doi:10.1177/1099800415592966
 33. Leede EM De, Leersum NJ Van, Kroon HM, Weel V Van, Sijp JRM Van Der, Bonsing BA. Multicentre randomized clinical trial of the effect of chewing gum after abdominal surgery. *BJS.* 2018;105(7):1-9. doi:10.1002/bjs.10828
 34. Byrne CM, Zahid A, Young JM, Solomon MJ, Young CJ. Gum Chewing Aids Bowel Function Return and Analgesic Requirements After Bowel Surgery: A Randomised Controlled Trial. 2017. doi:10.1111/ijlh.12426
 35. Nathawong E, Sangkomkamhang U, Sangkomkamhang T. Gum Chewing for Stimulating Early Recovery of Bowel Function after Postoperative Benign Gynecologic Surgery: A Randomized Controlled Trial. *Thai J Obstet Gynaecol.* 2016;24(4):247-254.
 36. Lambrechts DP V, Boersema GSA, Tas B, Wu Z, Menon AG. Nicotine chewing gum for the prevention of postoperative ileus after colorectal surgery: a multicenter, double-blind, randomised, controlled pilot study. *Int J Color Dis.* 2017;32(9):1267-1275. doi:10.1007/s00384-017-2839-z
 37. Atkinson C, Penfold CM, Ness AR, et al. Randomized clinical trial of postoperative chewing gum versus standard care after colorectal resection. 2016;33 (1):962-970. doi:10.1002/bjs.10194
 38. Yildizeli S, Deniz S. Effect of gum chewing on reducing postoperative ileus and recovery after colorectal surgery: A randomised controlled trial. *Complement Ther Clin Pract.* 2016;23(2):21-25. doi:10.1016/j.ctcp.2016.02.001
 39. Rabiepoor S, Yas A, Navaei J, Khalkhali HR. Does coffee affect the bowel function after caesarean section? *Eur J Obstet Gynecol.* 2017;220(7):96-99. doi:10.1016/j.ejogrb.2017.07.028
 40. Dulskas A, Klimovskij M, Vitkauskiene M, Samalavicius NE. Effect of Coffee on the Length of Postoperative Ileus After Elective Laparoscopic Left-Sided Colectomy: A Randomized, Prospective Single-Center Study. 2015;58(11):1064-1069. doi:10.1097/DCR.0000000000000449
 41. Goymen A, Simsek Y, Oskaplan SE, et al. Effect of Gum Chewing and Coffee Consumption on Intestinal Motility in Caesarean Sections. 2017;(3):1-5. doi:10.4328/JCAM.4901
 42. Hayashi K, Tsunoda A, Shiraishi A, Kusanagi H. Quantification of the effects of coffee on postoperative ileus after laparoscopic ventral rectopexy: a randomized controlled trial. *Eur Surg.* 2019;51(6):325-331. doi:10.1007/s10353-019-0605-x
 43. Augestad K, Delaney C. Postoperative ileus:

- impact of pharmacological treatment, laparoscopic surgery and enhanced recovery pathways. *World J Gastroenterol.* 2010;16(17):2067-2074. doi:10.3748/wjg.v16.i17.2067
44. Livingston EH, Passaro Jr EP. Postoperative ileus. *Dig Dis Sci.* 1990;35(1):121-232. doi:10.1007/bf01537233
45. Barletta JF, Senagore AJ. Reducing the Burden of Postoperative ileus : Evaluating and Implementing an Evidence-based Strategy. *World J Surg.* 2014;38(8):1966-1977. doi:10.1007/s00268-014-2506-2
46. Short V, Herbert G, Perry R, et al. Chewing gum for postoperative recovery of gastrointestinal function. *Cochrane Database Syst Rev.* 2015;20(2):CD006506. doi:10.1002/1464651858.CD006506.pub3
47. Sherwood. *Fisiologi Manusia Dari Sel Ke Sistem.* (6, ed.). Jakarta: EGC; 2011.
48. Eamudomkarn N, Kietpeerakool C, Kaewrudee S. Effect of postoperative coffee consumption on gastrointestinal function after abdominal surgery : A systematic review and meta- analysis of randomized controlled trials. *Sci Rep.* 2018;8(11):1-10. doi:10.1038/s41598-018-35752-2
49. Cornwall HL, Edwards BA, Curran JF, Boyce S. Coffee to go ? The effect of coffee on resolution of ileus following abdominal surgery : A systematic review and meta-analysis of randomised controlled trials. *Clin Nutr.* 2019;300(6):1-10. doi:10.1016/j.clnu.2019.06.003
50. Kane TD, Tubog TD, Schmidt JR. The Use of Coffee to Decrease the Incidence of Postoperative Ileus : A Systematic Review and Meta-Analysis. *J PeriAnesthesia Nurs.* 2019;300(7):1-8. doi:10.1016/j.jopan.2019.07.004

A review on reducing the incidence of postoperative ileus by chewing

ORIGINALITY REPORT

13%

SIMILARITY INDEX

12%

INTERNET SOURCES

7%

PUBLICATIONS

0%

STUDENT PAPERS

PRIMARY SOURCES

1	doaj.org Internet Source	6%
2	onlinelibrary.wiley.com Internet Source	1%
3	biomedpharmajournal.org Internet Source	1%
4	Tetet Kartilah, Sofia Februanty. "Effectiveness of progressive muscle relaxation and aromatherapy on fatigue in pregnant mothers", MEDISAINS, 2020 Publication	1%
5	garuda.ristekbrin.go.id Internet Source	1%
6	Nefise Çalışkan, Hülya Bulut, Ali Konan. "The Effect of Warm Water Intake on Bowel Movements in the Early Postoperative Stage of Patients Having Undergone Laparoscopic Cholecystectomy", Gastroenterology Nursing, 2016 Publication	1%

7	www.science.gov Internet Source	<1 %
8	school.cbe.ab.ca Internet Source	<1 %
9	content.sciendo.com Internet Source	<1 %
10	Audrius Dulskas, Michail Klimovskij, Marija Vitkauskiene, Narimantas E. Samalavicius. "Effect of Coffee on the Length of Postoperative Ileus After Elective Laparoscopic Left-Sided Colectomy", Diseases of the Colon & Rectum, 2015 Publication	<1 %
11	coek.info Internet Source	<1 %
12	digitalcommons.pcom.edu Internet Source	<1 %
13	link.springer.com Internet Source	<1 %
14	Thomas Andersson, Kristofer Bjerså, Kristin Falk, Monika Fagevik Olsén. "Effects of chewing gum against postoperative ileus after pancreaticoduodenectomy – a randomized controlled trial", BMC Research Notes, 2015 Publication	<1 %

15 Dilek Soylu, Pinar Tekinsoy Kartın. "The effect on gastrointestinal system functions, pain and anxiety of acupressure applied following laparoscopic cholecystectomy operation: A randomised, placebo-controlled study", *Complementary Therapies in Clinical Practice*, 2021
Publication <1 %

16 openaidsjournal.com
Internet Source <1 %

17 www.ijrcog.org
Internet Source <1 %

Exclude quotes Off
Exclude bibliography On

Exclude matches < 10 words