

Corelation of Parents' Profiles Of Children With Late Cleft Repair In Surabaya Cleft Lip And Palate Centre (January 2015 – December 2017)

by Laras Puspita Ningrum

Submission date: 01-May-2021 03:16PM (UTC+0800)

Submission ID: 1575198174

File name: baya_Cleft_Lip_And_Palate_Centre_January_2015_December_2017.pdf (792.95K)

Word count: 2508

Character count: 13206

Corelation Of Parents' Profiles Of Children With Late Cleft Repair In Surabaya Cleft Lip And Palate Centre (January 2015 – December 2017)

Laras Puspita Ningrum^a, Iswinarno Doso Saputro^{a*}, Lobredia Zarasade^a

^aDepartment of Plastic Reconstructive and Aesthetic Surgery, Faculty of Medicine Universitas Airlangga

*Corresponding author: Iswinarno Doso Saputro - Department of Plastic Reconstructive and Aesthetic Surgery, Faculty of Medicine Universitas Airlangga. Email address: iswinarno@yahoo.com

ARTICLE INFO

Keywords: Cleft palate, Cleft palate repair, Late cleft palate repair.

ABSTRACT

Background : Optimal time of Cleft palate repair is during the 10 to 12 month of age. In this time produce far natural results in terms of speech because it enabled the maturation of scar tissue postoperatively. The soft palate must function properly before the patient starts learning to talk, otherwise speech disorders such as *persistent rhinolalia aperta* might arise. In pediatric patients, the role of parents is very important on adherence to therapy.

Methods: This is a cross-sectional study. The first study group was parents of patients who had surgical repair before two years old and the second group was the parents of patients who had repair after two years old. We compared age, monthly income, education level, number of children, and residential distance from Surabaya of the two groups.

Results : The data of this study were obtained from the medical records of patients with cleft lip surgery at CLP Center Surabaya in 2015th – 2017th with total of 358 patients, 172 were female and 186 were male. 52 patients with delayed cleft palate surgery. Patients' parents in both groups were mostly 31-40 years old, were high school graduated, has one child, earned less than 1.5 million rupiah a month, and lived less than 100 kms from Surabaya. From the statistical results, parent's income has the strongest correlation with the patient's age in cleft palate surgery (-2.7). A negative coefficient means that the less parent's income, the more patient likely had delayed cleft palate surgery. While other factors found weak and very weak correlations.

Conclusions: The results from patient's parents' interview, concluded that besides economic factors, the lack of information cleft palate treatment is the key factors that contributed to the delay of cleft palate repair. The education level does not affect the delay in cleft palate surgery, because even in high educated parents, sometimes they don't understand the stages of cleft lip and palate treatment. This study emphasized the necessity to educate about the stages of surgery by primary care physicians, to minimize delays.

INTRODUCTION

Cleft lip and palate is a congenital disorder due to disruption of protrusions on the facial embryo during intra-uterine growth.¹ There are clefts on the lips with or without alveolar and palate cleft Embryologically, this occurs in the first trimester of pregnancy. The incidence of cleft lip and palate is 1-2 per 1000 live births.² This number is slightly higher in certain areas such as East Nusa Tenggara, reaching 6-9 per 1000 live births.³

Cleft palate repair should be performed at the age of 10 to 12 months. This allows maturation of postoperative scar tissue to soften and optimize speech.⁴ Late cleft palate repair may increase the risk of speech function disorders such as *persistent rhinolalia aperta*.

In Surabaya CLP Center, 25% of cleft palate repair are carried out at the age of more than 7 years, 50% at ages 3-7 years, and only 25% are carried out according to the recommended age.³ There are numerous

factors associated to the late timing of cleft palate repair, among them are the age of parents, parental education, socioeconomic level, number of children in the family, and patient residence. This study aims to analyze the correlation of parents' profile that associated with the delay of cleft palate repair.

METHOD

We conducted a retrospective study involving 139 patients who is done the rhinoplasty unilateral operation at Malahayati Hospital from January 2017 to November 2019. Demographic information was recorded such as ratio between pre -

operation and post - operation, gender and age.

RESULT

Data were obtained from the database of patients who underwent cleft palate repair at Surabaya CLP Center from January 1st, 2015 - December 31st, 2017. A total of 358 patients were included in the study, of which 172 (48,04%) were female and 186 (51,96%) were male. Out of the 358 patients, 52 patients underwent the first cleft palate repair at the age of more than 2 years old. All factors obtained in database were presented in Table 1.

Table 1. Factors observed in timing of cleft palate repair

Factors	Not Late		Late		
	Father	Mother	Father	Mother	
Age	< 20 y.o.	3	18	-	1
	21 - 30 y.o.	103	150	9	19
	31 - 40 y.o.	149	125	23	25
	41 - 50 y.o.	43	7	14	6
	> 50 y.o.	2	-	6	1
Education	No formal education	7	39	4	6
	Elementary school (SD)	66	46	12	13
	Junior high school (SMP)	58	68	11	12
	High school (SMA)	128	106	23	15
	Higher vocational school	15	15	-	1
	Bachelor	26	26	2	5
Monthly Income	< 1.5 million	236		44	
	1.5 - 2.5 million	35		5	
	2.5 - 3.5 million	17		2	
	> 3.5 million	12		1	
Number of Children	1	141		22	
	2	109		22	
	3	39		6	
	4	9		1	
	>4	2		1	
Residential distance	100 kms or less	194		30	
	> 100 kms	106		22	

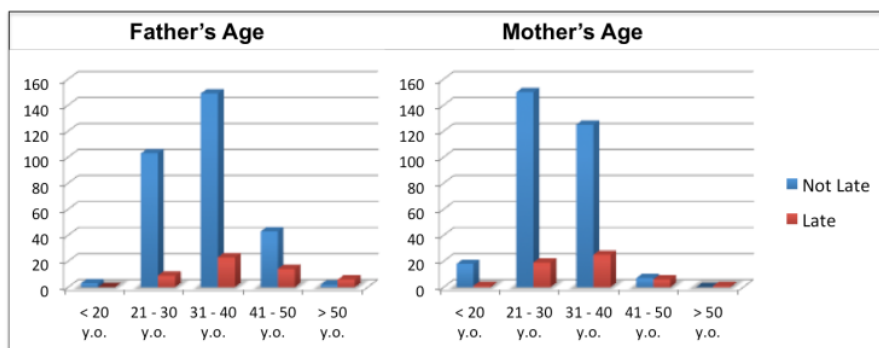


Figure 1 Parents' age and cleft palate repair timing of their children

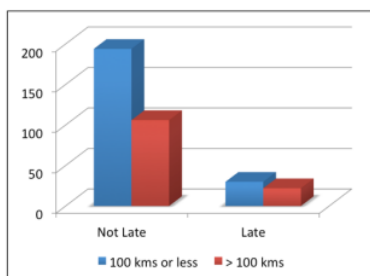


Figure 2 Residential distance from Surabaya

The average age of the patients' fathers and mothers in both groups is 31-40 years old (Figure 1). Both groups share common characteristic of the parents, those were educational level, monthly income and numbers of children in family. Most were high school graduates, earned less than 1.5 million rupiahs and had one child. The patients in both groups also lived less than 100 kilometres from Surabaya (Figure 2).

Statistical analysis using Chi square was carried out to observe the association between these factors mentioned above to the delay of the cleft palate repair. The fathers' age ($p = 0.000$) and mothers' age ($p = 0.001$) were associated with the delay in cleft palate repair. There was no association between the fathers' education level ($p = 0.151$), mother's education level ($p = 0.541$), number of children in family ($p = 0.320$), and monthly income ($p = 0.286$) and the delay of the surgery. The odds ratio of the residential distance was calculated and it was found that the patients who lived more 100 kilometers away from Surabaya were 1.36 times more

likely to have late cleft palate repair, but this was also insignificant.

Furthermore, 25 interviews were conducted to add perspectives in our analysis. Eleven of the parents interviewed said that they lacked the information about the ideal timing of the cleft palate repair and were informed about Surabaya CLP Center only recently. Ten parents considered the living cost in Surabaya while the children had surgeries. Three parents mentioned having difficulties leaving work and arranging time to go to Surabaya. One mother considered that it was not necessary to have surgery during infancy since she had her own palate repair in adulthood.

DISCUSSION

There are various factors suspected to have an association with the occurrence of late cleft palate repair. Previous research described that patients who had late cleft palate repair had characteristic of parents as follow: most age of 20-50 years old, graduates of elementary school (SD), and economic level group 1.⁵ This finding was different from this study, where in the group of patients who had late cleft palate repair had parents who were mostly aged 31-40 years old and high-school (SMU) graduates, but from the same socioeconomic status.

Analysis showed association between parent's age with late cleft palate repair in children found weak positive correlation, meant the older the parents, the later cleft palate repair was done. This was in contrast to a report from Hertz regarding patient adherence to diabetes treatment,

where the older the patients, the better adherence to control and treatment.⁶

Productive age patients tend to be less adherent to therapy. In Japan, patients of childbearing age were found to be less likely to adhere to treatment.⁷ Likewise, in other studies, patients aged 20-40 years also had low levels of adherence.⁸ In Singapore, patients aged less than 40 years were found to be less likely to take drugs prescribed in the clinic.⁹ Patients in this age range had other priorities in their daily lives. Because of their work and other commitments, they were not able to adhere to the treatment schedule. We found similar pattern where in parents' productive age group, 31-40 years, the children had late cleft palate repair.

The effect of education level on noncompliance in terms of previous studies, has varied results. Several studies found patients with higher education level also have higher levels of adherence.^{10,11} While some studies did not find a significant relationship between education level and patient compliance.¹²⁻¹⁴ Intuitively, it was expected that patients with a higher level of education should have had better knowledge about the disease and therapy and therefore were expected to be more obedient. However, DiMatteo found that highly educated patients tend not to understand their condition neither believed in the benefits of adherence to their treatment regimen.¹⁵ Other researchers showed that patients with lower levels of education to have better adherence.¹⁶ A UK study group found that patients without formal education qualifications had better adherence to their treatment.¹⁷ It was assumed that patients with lower education level trusted more to doctor's advice. From these results, it seemed that education level was not a good predictor of therapeutic adherence. We found insignificant correlation between parental education and the delay of cleft palate repair to their children.

Cost and income were two interrelated factors and had significant influence on patients' compliance. In this study, parental income had no association to the age of cleft palate repair. Although cleft palate repair was Surabaya CLP Center is free of charge, it was a significant amount of

accomodation cost. A number of studies found that patients without insurance,^{18,19} or who have low income were more likely to be non-adherent to treatment.²⁰⁻²² Even in the United States, more than one in ten seniors with health insurance, were reportedly not compliant to therapy on cost reason.

This study added valuable information from the interview that the main factors that cause the most delays were the lack of information regarding the phases of the cleft repair, the presence of free surgeries at Surabaya CLP Center. From the interview, we observed that the main factor contributing the delay of the cleft lip repair was access to the surgery itself.

CONCLUSION

Although we found the association between parental age and the delay of the cleft palate repair in their children, the interview suggests that the problems were access to health care facilities and the lack of information regarding the timing of cleft surgeries. Moreover, access to free health care services and surgery was not available to patients outside Surabaya. This study emphasized the necessity to educate about the stages of surgery by primary care physicians, to minimize delays.

RECOMMENDATION

We recommended to give more information and disseminate information about the free operation of cleft lip and palate at Surabaya CLP Center. Further in-depth qualitative study should reveal any problems that correlates to delay of the surgery.

REFERENCES

1. Hopper R. Cleft Lip and Palate: Embryology, Principles, and Treatment. In: Thorne CH, editors. *Grabb and Smith's Plastic Surgery*, 7th ed. Philadelphia: Lippincott Williams & Wilkins; 2014.
2. Christensen K. The 20th Century Danish Facial Cleft Population Epidemiological and Genetic Epidemiological Studies. *The Cleft*

- Palate-Craniofacial Journal*. 2000;36(2):96-104.
- 20
3. Noer IS. Study on The Cause of Delayed Operation for Cleft Palate Repair at CLP Center in Surabaya International Hospital. 2007
 4. Marzoeki DJ. *Tehnik Celah Bibir dan Langit-langit*. Jakarta: Sagung Seto; 2002.
 5. Noer MS. Study on Case Delayed Operation for Cleft Palate Repair at CLP Center Surabaya International Hospital. 2006.
 6. Hertz R, Unger A, Lustik M. Adherence with pharmacotherapy for type 2 diabetes: a retrospective cohort study of adults with employer-sponsored health insurance. *Clinical Therapeutics*. 2005;27(7):1064-1073.
 7. Iihara N, Tsukamoto T, Morita S, Miyoshi C, Takabatake K, Kurosaki Y. Beliefs of chronically ill Japanese patients that lead to intentional non-adherence to medication. *Journal of Clinical Pharmacy and Therapeutics*. 2007;29(5):417-424.
 8. Siegal B, Greenstein S. Compliance and Noncompliance in Kidney Transplant Patients: Cues for Transplant Coordinators. *Journal of Transplant Coordination*. 2007;9(2):104-108.
 9. Loong, TW. Primary non-compliance in a Singapore polyclinic. *Singapore Med J*. 2009 Nov;40(11):691-3.
 10. Okuno J, Yanagi H, Tomura S. Is cognitive impairment a risk factor for poor compliance among Japanese elderly in the community?. *European Journal of Clinical Pharmacology*. 2011;57(8):589-594.
 11. Ghods A, Nasrollahzadeh D. Noncompliance with Immunosuppressive Medications After Renal Transplantation. *Tissue Antigens*. 2013;60(6):553-553.
 12. Norman S, Marconi K, Schezal G, Schechter C, Stolley P. Beliefs, Social Normative Influences, and Compliance with Antihypertensive Medication. *American Journal of Preventive Medicine*. 2005;1(3):10-17.
 13. Horne R, Weinman J. Patients' beliefs about prescribed medicines and their role in adherence to treatment in chronic physical illness. *Journal of Psychosomatic Research*. 2009;47(6):555-567.
 14. Kaona F, Tuba M, Siziya S, Sikaona L. An assessment of factors contributing to treatment adherence and knowledge of TB transmission among patients on TB treatment. *BMC Public Health*. 2004;4(1).
 15. DiMatteo MR. Patient adherence to pharmacotherapy: the importance of effective communication. *Formulary*. 2005;30(10):596-605.
 16. Kyngäs H, Lahdenperä T. Compliance of patients with hypertension and associated factors. *Journal of Advanced Nursing*. 2009;29(4):832-839.
 17. Senior V, Marteau T, Weinman J. Self-Reported Adherence to Cholesterol-Lowering Medication in Patients with Familial Hypercholesterolaemia: The Role of Illness Perceptions. *Cardiovascular Drugs and Therapy*. 2007;18(6):475-481.
 18. Kaplan R, Bhalodkar N, Brown E, White J, Brown D. Race, ethnicity, and sociocultural characteristics predict noncompliance with lipid-lowering medications. *Preventive Medicine*. 2014;39(6):1249-1255.
 19. Choi-Kwon S, Kwon S, Kim J. Compliance with Risk Factor Modification: Early-Onset versus Late-Onset Stroke Patients. *European Neurology*. 2015;54(4):204-211.
 20. Frazier PA, Davis-Ali SH, Dahl KE. Correlates of noncompliance among renal transplant recipients. *Clin Transplant*. 2004;8(6):550-557.
 21. Apter A, Reisine S, Affleck G, Barrows E, Zuwallack R. Adherence with Twice-Daily Dosing of Inhaled Steroids. *American Journal of Respiratory and Critical Care Medicine*. 2008;157(6):1810-1817.
 22. Mishra P, Hansen EH, Sabroe S, Kafle KK. Socio-economic status and adherence to tuberculosis treatment: a case-control study in a district of Nepal. *Int J Tuberc Lung Dis*. 2015;9(10):1134-1139.

Corelation of Parents' Profiles Of Children With Late Cleft Repair In Surabaya Cleft Lip And Palate Centre (January 2015 – December 2017)

ORIGINALITY REPORT

14%

SIMILARITY INDEX

12%

INTERNET SOURCES

11%

PUBLICATIONS

0%

STUDENT PAPERS

PRIMARY SOURCES

1	pdfs.semanticscholar.org Internet Source	2%
2	isainsmedis.id Internet Source	2%
3	jprjournal.com Internet Source	1%
4	www.jpsbr.org Internet Source	1%
5	www.researchgate.net Internet Source	1%
6	studentsrepo.um.edu.my Internet Source	1%
7	eprints.glos.ac.uk Internet Source	1%
8	Mei-Na Zhang, Young-Suk Lee, Soon-Boon Kim. "A Study on Clothes Purchase and Size	1%

Fit for Kindergarten Children", Fashion &
Textile Research Journal, 2013

Publication

9

"Cleft Lip and Palate Treatment", Springer
Science and Business Media LLC, 2018

Publication

1 %

10

www.neliti.com

Internet Source

1 %

11

Mantziou, Vassiliki, Constantine I. Vardavas,
Eleni Kletsiou, and Kostas N. Priftis.
"Predictors of Childhood Exposure to Parental
Secondhand Smoke in the House and Family
Car", International Journal of Environmental
Research and Public Health, 2009.

Publication

<1 %

12

Roaa Aljohani, Zeyad Aljohani, Rawan Aljohani,
Raghad Alsaidalani. "Saudi cultural adaptation
of the "compliance questionnaire of
Rheumatology" for Rheumatoid arthritis
patients on disease modifying anti-rheumatic
drugs (DMARDs)", Saudi Pharmaceutical
Journal, 2021

Publication

<1 %

13

event.ners.unair.ac.id

Internet Source

<1 %

14

www.biomedcentral.com

Internet Source

<1 %

15

www.ncbi.nlm.nih.gov

Internet Source

<1 %

16

Alper Ural, Fatma Bilgen, Mehmet Bekerecioğlu. "Evaluation of Adolescent and Adult Cleft Lip and Palate Patients in a Developing Country", *Journal of Craniofacial Surgery*, 2020

Publication

<1 %

17

Pasick, Christina M., Paul L. Shay, Carrie A. Stransky, Cynthia B. Solot, Marilyn A. Cohen, and Oksana A. Jackson. "Long term speech outcomes following late cleft palate repair using the modified Furlow technique", *International Journal of Pediatric Otorhinolaryngology*, 2014.

Publication

<1 %

18

Robertus Arian Datusanantyo, Magda Rosalina Hutagalung, Sitti Rizaliyana, Djohansjah Marzoeki. "Anthropometric Outcome of Primary Unilateral Cleft Lip Repair in Indonesia", *The Cleft Palate-Craniofacial Journal*, 2021

Publication

<1 %

19

www.counseling.org

Internet Source

<1 %

20

penelitian.unair.ac.id

Internet Source

<1 %

Exclude quotes On

Exclude matches Off

Exclude bibliography On

Corelation of Parents' Profiles Of Children With Late Cleft Repair In Surabaya Cleft Lip And Palate Centre (January 2015 – December 2017)

GRADEMARK REPORT

FINAL GRADE

/100

GENERAL COMMENTS

Instructor

PAGE 1

PAGE 2

PAGE 3

PAGE 4

PAGE 5
