

p-ISSN 2355-8393

e-ISSN 2599-056X

FOLIA MEDICA INDONESIANA

Vol. 54 No. 4 December 2018

EFFECTS OF VALPROATE AND FLUOXETINE COMBINATION ON YMRS AND MADRS SCORES IN CONTINUATION PHASE TREATMENT OF BIPOLAR DISORDER
(Ganesha T. Trengginas, Didik H Asmono, Roni Subagyo)

EFFECT OF GOOD HYGIENE SANITATION AND PERSONAL HYGIENE DEPOT MANAGEMENT OF REFILL DRINKING WATER ON THE QUALITY OF DRINKING WATER REVIEWED FROM MOST-PROBABLE - NUMBER COLIFORM IN KEDIRI
(Indasah)

DHIKR (RECITATION) AND RELAXATION IMPROVE STRESS PERCEPTION AND REDUCE BLOOD CORTISOL LEVEL IN TYPE 2 DIABETES MELLITUS PATIENTS WITH OAD
(Faisal Amir, Gondo Mastutik, M. Hasinuddin, Suhartono Taat Putra)

THE PREVALENCE OF EXTENDED SPECTRUM β -LACTAMASE (ESBL) PRODUCING GUT BACTERIAL FLORA AMONG PATIENTS IN DR. SOETOMO HOSPITAL AND PRIMARY HEALTH CENTRE IN SURABAYA
(Dian Neni Naelasari, Eko Budi Koendhori, Linda Dewanti, Sulistiawati, Rosantia Sarassari, K. Kuntaman)

icaA/D GENES AND BIOFILM FORMATION OF METHICILLIN-RESISTANT *Staphylococcus aureus* IN DR. SOETOMO HOSPITAL, SURABAYA
(Putu Arya Suryanditha, Yoeke Dewi Rasita, Kartuti Debora, K. Kuntaman)

FORENSIC IDENTIFICATION OF BLOOD TYPES IN PEAR (*Pyrus bretschneideri*) FRUIT BITEMARK
(Andika Aliviameita, Mieke Sylvia M.A.R., Ahmad Yudianto)

THE EFFECT OF TIME ON BLOOD GROUP OF ABO SYSTEMS ON SALIVA SPOTS OF CIGARETTE BUTTS FOR FORENSIC IDENTIFICATION
(Mely Purnadianti, Mieke Sylvia MAR, Ahmad Yudianto)

COMPARISON OF LENGTH OF STAY AND DEEP VEIN THROMBOSIS (DVT) INCIDENTS IN DR. SOETOMO HOSPITAL
(Elizeus Hanindito, Prananda Surya Airlangga, Soni Sunarso Sulistiawan, et al)

INCREASED ACTIVITY OF MATURE OSTEOBLAST FROM RAT BONE MARROW-MESENCHYMAL STEM CELLS IN OSTEOGENIC MEDIUM EXPOSED TO MELATONIN
(Yugi Hari Chandra Purnama, Gondo Mastutik, Suhartono Taat Putra)

PREVALENCE OF INSOMNIA AND ITS ASSOCIATION WITH SOCIAL MEDIA USAGE AMONG UNIVERSITY STUDENTS IN SELANGOR, MALAYSIA, 2018
(Mohammed A. Abdalqader, Indang Ariati Ariffin, Hasanain Faisal Ghazi, et al)

THE EFFICACY OF *Psidium guajava* Linn LEAF EXTRACTS FROM SELANGOR REGION AGAINST GRAM-POSITIVE AND GRAM-NEGATIVE BACTERIA
(S. Zuhaira, Noorhaniz Mohd Nizam, P.M. Ridzuan)

Review article:

THE EFFECT OF EXERCISE ON FAT BROWNING THROUGH PLASMA IRISIN LEVEL MODULATION TO OVERCOME OBESITY
(Miftahul Nur Amalyah, Purwo Sri Rejeki)

Reviewarticle

NEONATAL SEPSIS IN THAILAND
(Anucha Thatrimontrichai)

International Online Distribution by ProQuest™
www.proquest.com

Folia Medica Indonesiana	Vol. 54	No. 4	Page 234-310	Surabaya December 2018	p-ISSN: 2355-8393 e-ISSN: 2599-056X
-----------------------------	---------	-------	--------------	---------------------------	--

Editorial Team



Kuntaman Kuntaman

Editor in Chief

Department of Medical Microbiology, Faculty of Medicine, Universitas Airlangga; Indonesian Society for Clinical Microbiology, Indonesia

0000-0003-4897-8879 Google Scholar 8700386400 6086035



Viskasari Pintoko Kalanjati

Associate Editor

Department of Anatomy Histology and Pharmacology, Faculty of Medicine, Universitas Airlangga, Indonesia; International Federation of Associations of Anatomists (IFAA), Indonesia

0000-0002-7005-0025 Google Scholar 54388384000 5975075



Lucky Prasetiowati

Editorial Board

PAAI, Indonesia

0000-0002-8929-9816 Google Scholar 57192906307 5995382



Muhammad Miftahussurur

Editorial Board

Universitas Airlangga, Indonesia; Baylor College Medicine, Houston, US

0000-0003-1415-6033 Google Scholar 56323903000 6031037



Yoshio Yamaoka

Editorial Board

Oita University, Japan

0000-0002-1222-5819 Google Scholar 55183784100 -



Purwo Sri Rejeki

Editorial Board

Department of Physiology and Biochemistry, Faculty of Medicine, Universitas Airlangga, Surabaya, Indonesia

0000-0003-2363-6362 Google Scholar 35088990700 6067303



Delvac Oceandy

Editorial Board

Division of Cardiovascular Sciences, Faculty of Biology, Medicine, and Health, The University of Manchester, Manchester, United Kingdom

0000-0002-6242-6491 - 6506557120 -



Andrew Paul Smith

Editorial Board

Centre for Occupational and Health Psychology, School of Psychology, Cardiff University, Cardiff, United Kingdom

0000-0001-8805-8028 - 35429650000



Franco Servadei
Editorial Board

Department of Neurosurgery, Humanitas University, Italy

0000-0002-3595-3464

[Google Scholar](#)

7006077203



Marten J Postma
Editorial Board

Faculty of Science, Swammerdam Institute for Life Sciences, University of Amsterdam, Netherlands

0000-0002-3167-3633

[Google Scholar](#)

-



Aryati Aryati
Editorial Board

PDS PATKLIN, Indonesia

0000-0001-9055-0177

[Google Scholar](#)

56054058600

6043865



Dirk Jan Marie de Ridder
Editorial Board

Department of Development and Regeneration, Katholieke Universiteit Leuven, Belgium

-

[Google Scholar](#)

-



Horie Shigeo
Editorial Board

Department of Urology, Faculty of Medicine, Juntendo University, Japan

0000-0002-8612-8368

-

57222920684



Yusuke Suzuki
Editorial Board

Department of Nephrology, Faculty of Medicine, Juntendo University, Japan

-

-

8388474600



Hiroaki Kimura
Editorial Board

Department of Physical Medicine and Rehabilitation, Hiroshima University Hospital, Japan

0000-0003-0005-5805

-

49763362000



Bambang Purwanto
Editorial Board

Master Program of Sport Medicine, Dr. Soetomo General Academic Hospital, Indonesia

0000-0002-3786-7068

[Google Scholar](#)

57152859900

5987193



Arend Frederik Bos
Editorial Board

Division Neonatology, Faculty of Medical Sciences, University of Groningen, Netherlands

-

-

36839156800



Azimatul Karimah
Editorial Board

Dr. Soetomo General Academic Hospital, Surabaya, Indonesia

0000-0002-0261-7878

[Google Scholar](#)

55640202700

6058132





Reny Itishom
Editorial Board

Department of Biomedical Sciences, Faculty of Medicine, Universitas Airlangga, Surabaya, Indonesia

0000-0002-9971-7786 [Google Scholar](#) 57209243610 5984521



Christianto Lumenta
Editorial Board

Bogenhausen Academic Teaching Hospital, Technical University, Munich, Germany

0000-0002-4030-0708 - 55397690000 -



Irwanto Irwanto
Editorial Board

Department of Child Health, Universitas Airlangga, Indonesia

0000-0002-7573-8793 [Google Scholar](#) - 255759



Jitti Hanprasertpong
Editorial Board

Division of Gynecologic Oncology, Department of Obstetrics and Gynecology, Faculty of Medicine, Prince of Songkla University, Hat Yai, Songkhla, Thailand

0000-0002-0640-6824 [Google Scholar](#) 21740891300 -



Surasak Sangkhathat
Editorial Board

Pediatric Surgery Unit, Department of Surgery, Prince of Songkla University, Songkhla, Thailand

0000-0003-3622-3233 - 6602156542 -



Brahmaputra Marjadi
Editorial Board

Western Sydney University, Penrith, Australia

0000-0003-0898-3737 [Google Scholar](#) 28267975300 -



Asra Al Fauzi
Editorial Board

PERSPEBSI (Perhimpunan Spesialis Bedah Saraf Indonesia- INS), Indonesia; Surabaya Neuroscience Institute (SNeI), Indonesia

0000-0002-5155-2476 [Google Scholar](#) 57215857858 5984620



Wihasto Suryaningtyas
Editorial Board

PERSPEBSI, Indonesia; Dr. Soetomo General Academic Hospital, Indonesia

0000-0002-1187-3777 [Google Scholar](#) 57216140907 5987008



Siti Khaerunnisa
Editorial Board

Department of Physiology and Medical Biochemistry, Faculty of Medicine, Universitas Airlangga, Surabaya, Indonesia

0000-0002-6358-8265 [Google Scholar](#) 57205438945 6072589



Atika Wardah
Assistant Editor

Unit Konsorsium Jurnal dan Folia Medica Indonesiana, Indonesia

0000-0002-8065-4922 [Google Scholar](#) -



Vol. 54 No. 4 (2018): December

Current Issue



Vol. 54 No. 4 (2018): December

Published: 2018-12-11

Articles

Effects of Valproate and Fluoxetine Combination on YMRS and MADRS Sores in Continuation Phase Treatment of Bipolar Disorder

Ganesha T Trengginas , Didik Hasmono , Roni Subagyo

234-240

Abstract : 1645

PDF : 856



DOI : 10.20473/fmi.v54i4.10704

Effect of Good Hygiene Sanitation and Personal Hygiene Depot Management of Refill Drinking Water on the Quality of Drinking Water Reviewed from Most-Probable-Number Coliform in Kediri

Indasah Indasah

241-248

Abstract : 1228

PDF : 920



DOI : 10.20473/fmi.v54i4.10705

Dhikr (Recitation) and Relaxation Improve Stress Perception and Reduce Blood Cortisol Level in Type 2 Diabetes Mellitus Patients with OAD

Faisal Amir , Gondo Mastutik , M Hasinuddin , Suhartono Taat Putra

249-255

Abstract : 3294

PDF : 1657



DOI : 10.20473/fmi.v54i4.10707

The Prevalence of Extended Spectrum Beta-Lactamase (ESBL) Producing Gut Bacterial Flora Among Patients in Dr. Soetomo Hospital and Primary Health Centre in Surabaya

Dian Neni Naelasari , Eko Budi Koendhori , Linda Dewanti , Rosantia Sarassari , K Kuntaman

256-262

Abstract : 3095

PDF : 2538



DOI : 10.20473/fmi.v54i4.10708

icaA/D Genes and Biofilm Formation of Methicillin-Resistant Staphylococcus aureus in Dr. Soetomo Hospital, Surabaya

Putu Arya Suryanditha , Yoeke Dewi Rasita , Kartuti Debora , K Kuntaman

263

Abstract : 1317

PDF : 697

**Forensic Identification of Blood Types in Pear (*Pyrus bretschneideri*) Fruit Bitemark**

Andika Aliviameita , Mieke Sylvia MAR , Ahmad Yudianto

269-273

Abstract : 2163

PDF : 1153



DOI : 10.20473/fmi.v54i4.10710

The Effect of Time on Blood Types of ABO Systems on Saliva Spots of Cigarette Butts for Forensic Identification

Mely Purnadianti , Mieke Sylvia MAR , Ahmad Yudianto

274-277

Abstract : 1079

PDF : 676



DOI : 10.20473/fmi.v54i4.10711

Comparison of Length of Stay and Deep Vein Thrombosis (DVT) Incidents in Dr. Soetomo Hospital

Elizeus Hanindito , Prananda Surya Airlangga , Soni Sunarso Sulistiawan , Bambang Pujo Semedi , Lucky Andriyanto , Arie Utariani , Nancy Margarita Rehatta

278-281

Abstract : 1985

PDF : 1484



DOI : 10.20473/fmi.v54i4.10713

Increased Activity Of Mature Osteoblast from Rat Bone Marrow-Mesenchymal Stem Cells tn Osteogenic Medium Exposed to Melatonin

Yugi Hari Chandra Purnama , Gondo Mastutik , Suhartono Taat Putra

282-288

Abstract : 832

PDF : 427



DOI : 10.20473/fmi.v54i4.10714

Prevalence of Insomnia and Its Association with Social Media Usage among University Students in Selangor, Malaysia, 2018

Mohammed A Abdalqader , Indang Ariati Ariffin , Hasanain Faisal Ghazi , Mohammed Faez AboBakr , Mohd Ariff Fadzil

289-293

Abstract : 7957

PDF : 5057



DOI : 10.20473/fmi.v54i4.10715

The Efficacy of Psidium guajava Linn Leaf Extracts from Selangor Region Against Gram-Positive and Gram-Negative Bacteria

S Zuhaira , Noorhaniz Mohd Nizam , PM Ridzuan

294-300

Abstract : 896

PDF : 838



DOI : 10.20473/fmi.v54i4.10716

Review article: The Effect of Exercise On Fat Browning through Plasma Irisin Level Modulation to Overcome Obesity

Miftahul Nur Amaliyah , Purwo Sri Rejeki

301-305

Abstract : 1360

PDF : 832



DOI : 10.20473/fmi.v54i4.10718

Review article: Neonatal Sepsis in Thailand

Anucha Thatrimontrichai

306-310

Abstract : 1774

PDF :



DOI : 10.20473/fmi.v54i4.10719

Meet Our Editorial Team



Kuntaman Kuntaman
Editor in Chief
Universitas Airlangga, Surabaya, Indonesia
8700386400



Viskasari Pintoko Kalanjati
Associate Editor
Universitas Airlangga, Indonesia
54388384000



Muhammad Miftahussurur
Editorial Board
Universitas Airlangga, Indonesia
56323903000

[Read More](#)

Instruction For Author

How to Submit	Guidelines for Authors
Online Submission	Document Template
Patient Consent for Publication	CTA & Authors' Declaration

ISSN

Printed ISSN	Electronic ISSN
------------------------------	---------------------------------

Journal Standing



Reference Manager



Plagiarism Checker



INCREASED ACTIVITY OF MATURE OSTEOBLAST FROM RAT BONE MARROW-MESENCHYMAL STEM CELLS IN OSTEOGENIC MEDIUM EXPOSED TO MELATONIN

Yugi Hari Chandra Purnama¹, Gondo Mastutik², Suhartono Taat Putra²

¹Master Program, Basic Medical Science, ²Department of Anatomic Pathology, Faculty of Medicine, Universitas Airlangga, Surabaya, Indonesia

ABSTRACT

Exposure to melatonin in the cultures of Bone Marrow Mesenchymal Stem Cells (BM-MSCs) in osteogenic medium is able to induce mesenchymal stem cells and preosteoblasts into active osteoblasts via several transduction signals such as ERK 1/2. Previous studies used a single dose of 50 nM and a physiological dose of 20-200 pg/ml. The objective of the study was to obtain an optimal dose of melatonin that enhances osteoblast activity by increasing the expression of ERK1/2 and ALP levels in the culture of Rat Bone Marrow Mesenchymal Stem Cells (BM-MSCs) in osteogenic medium. This study was an in vitro experimental laboratory study using BM-MSCs from rat femoral bone grown on osteogenic medium without or with exposure to melatonin in doses of 0, 50, 100, 150 nM for 21 days. BM-MSCs were characterized by immunocytochemical techniques (CD45- and CD 105+) and ERK 1/2 expression was checked 24 hours after exposure to melatonin, while ALP levels were examined on day 21 using ELISA technique. ERK 1/2 expression on BM-MSCs exposed to melatonin in doses 0, 50, 100, and 150 nM were respectively 0.087, 0.095, 0.081, and 0.079. Mean ERK 1/2 expression in various groups showed a decrease along with increasing doses of melatonin. Among the four treatment groups, the administration of melatonin in a dose of 50 nM resulted in highest mean ERK 1/2 expression. ALP levels in BM-MSCs exposed to melatonin doses of 0, 50, 100, and 150 nM were 0.128; 0.130; 0.117, and 0.111 ng/ml respectively. Data showed that decreasing mean ALP levels occurred along with the addition of melatonin dose. In conclusion, the administration of melatonin 50 nM is the optimal dose to increase the differentiation of cultured rat BM-MSCs into active osteoblasts.

Keywords: Melatonin; ERK 1/2 expression; ALP level; rat BM-MSCs

ABSTRAK

Paparan melatonin pada biakan Bone Marrow Mesenchymal Stem Cells (BM-MSCs) dalam medium osteogenik mampu menginduksi sel punca mesenkimal dan preosteoblas menjadi osteoblas aktif melalui beberapa sinyal transduksi seperti ERK 1/2. Penelitian terdahulu tersebut menggunakan dosis tunggal 50 nM dan dosis fisiologis 20-200pg/ml. Tujuan penelitian adalah mendapatkan dosis optimal melatonin yang mampu meningkatkan aktivitas osteoblas melalui peningkatan ekspresi ERK1/2 dan kadar ALP pada biakan Rat Bone Marrow Mesenchymal Stem Cells (BM-MSCs) di medium osteogenik. Penelitian ini merupakan penelitian eksperimental laboratorik in vitro menggunakan BM-MSCs dari tulang femur tikus yang dibiakkan pada medium osteogenik tanpa atau dengan paparan melatonin dosis 0, 50, 100, 150 nM selama 21 hari. BM-MSCs dikarakterisasi dengan teknik imunositokimia (CD45- dan CD 105+) dan ekspresi ERK 1/2 diperiksa 24 jam setelah paparan melatonin, sedangkan kadar ALP diperiksa hari ke-21 dengan menggunakan teknik ELISA. Ekspresi ERK 1/2 pada BM-MSCs yang diapapir melatonin dosis 0, 50, 100, 150 nM yaitu 0,087; 0,095; 0,081; 0,079 secara berurutan. Rerata ekspresi ERK 1/2 pada berbagai kelompok menunjukkan terjadi penurunan seiring dengan peningkatan pemberian dosis melatonin. Di antara keempat perlakuan tersebut, pemberian melatonin dengan dosis 50 nM dapat memberikan ekspresi ERK 1/2 dengan rerata tertinggi. Kadar ALP pada BM-MSCs yang dipapar melatonin dosis 0, 50, 100, 150 nM yaitu 0,128; 0,130; 0,117, dan 0,111 ng/ml secara berurutan. Data tersebut menunjukkan penurunan rerata kadar ALP terjadi seiring dengan penambahan dosis melatonin. Sebagai simpulan, pemberian melatonin 50 nM merupakan dosis optimal untuk meningkatkan diferensiasi biakan rat BM-MSCs menjadi osteoblas aktif.

Kata kunci: Melatonin; ekspresi ERK 1/2; kadar ALP; rat BM-MSCs

Correspondence: Gondo Mastutik, Department of Anatomic Pathology, Faculty of Medicine, Universitas Airlangga, Jl. Prof Dr Moestopo 47, Surabaya 60131, phone. 62-31-5020251, ext 151. E-mail: gondomastutik@gmail.com, gondomastutik@fk.unair.ac.id

INTRODUCTION

Melatonin or N-acetyl-5-methoxytryptamine is a hormone produced by the pineal gland and several other organs, such as salivary glands, gastrointestinal tract, skin, bone marrow and lymphocytes. Specifically in a dark state serotonin will be converted to N-acetylserotonin by the enzyme N-acetyltransferase. N-acetylserotonin will be methylated into melatonin by the hydroxyindole-O-methyltransferase enzyme. Later, melatonin will be released at night because of postsynaptic activation of the β -adrenergic receptor. Melatonin is known to improve bone health through bone remodeling mechanism as a target. The role of melatonin in bone physiology suggests that melatonin is the agent that can be selected for preventive therapy and prevent bone disease by improving therapeutic function through increased osteoblast differentiation in bone formation.

Exposure to melatonin in cultures of Bone Marrow Mesenchymal Stem Cells (BM-MSCs) in osteogenic media is capable of causing increased activity of mature osteoblasts (Radio et al 2006, Zaminy et al 2008). Research conducted by Radio et al (2006) found that single-dose melatonin administration of 50 nM may increase BM-MSCs differentiation characterized by increased alkaline phosphatase (ALP) activity through melatonin 2 (MTR2) and Extracellular-Signal-Regulated Kinases 1/2 (ERK1/2) (Radio et al 2006). Exposure to melatonin physiological doses of 20-200 pg/ml in rat BM-MSCs in osteogenic media can lead to increased ALP activity and extracellular mineralization (Zaminy et al 2008). The study used a single dose of 50 nM and a physiological dose of 20-200pg/ml. However, the optimal dose of melatonin levels capable of causing increased BM-MSCs differentiation remains unknown.

Melatonin is able to induce mesenchymal stem cells and preosteoblasts into active osteoblasts via several transduction signals such as ERK 1/2 and Wnt/ β -catenin. Melatonin will bind to the type 2 melatonin receptor (MT2R) in mesenchymal stem cells, then directly increase MAPK (ERK 1/2) activity. The activity of MEK1/2 or ERK 1/2 will activate the transduction signal, thus triggering the activation of alkaline phosphatase (ALP) in the cytoplasm (Maria & Enderby 2014). This study aims to obtain optimal doses of melatonin which can increase osteoblast activity through increased expression of ERK1/2 and ALP levels in rat BM-MSCs cultures in osteogenic medium.

MATERIALS AND METHODS

This study was an in vitro experimental laboratory study using BM-MSCs from rat femoral bone, which cultured,

expanded, passaged for 5 times, characterized, and cultured on osteogenic \pm melatonin medium for 21 days. The study was divided into four groups: group K0 (melatonin 0 nM), K1 (melatonin 50 nM), K2 (melatonin 100 nM), and K3 (melatonin 150 nM). BM-MSCs were characterized by immunocytochemical techniques (CD45- and CD 105+) and ERK 1/2 expression was examined after 24 hours of melatonin administration. ALP levels were examined after day 21 using ELISA techniques.

Isolation and culture of Bone Marrow Mesenchymal Stem Cells (BM-MSCs)

BM-MSC was obtained from male adult Wistar strain albino rat (*Rattus Norvegicus*), 6-8 weeks of age, and with healthy physical condition. Bone marrow collection was performed by aspirating femoral bone and each aspirate was transferred into a 15 mL sterile blue tube and diluted with sterile 1xPBS sufficiently to reach a total volume of 8 ml. Then, each tube was washed 2 times with the addition of 1 mPBS of 5 ml and its content was coupled with diluted aspirate. At each 5 mL aspirate the Ficoll was placed at room temperature in a 15 mL tube separately and the aspirate product was carefully placed on top of the Ficoll. Centrifugation was carried out at 1600 rpm for 15 min at room temperature in rotating container. After centrifugation, the buffy coat at the Ficoll-PBS join was taken using a sterile Pasteur transfer pipette and the cell was inserted into a 15 ml tube. Each sample was diluted with 1xPBS sufficiently to achieve a total volume of 15 ml. The tubes were shaken 3-5 times to mix well. Centrifugation was performed again at 1600 rpm for 10 minutes in a rotating container. Then, the centrifugation pellet was moved into a 5 cm petridish.

Cell expansion and culture

Cells obtained from the previous process were dissolved using 6 ml α -modified essential medium (α -MEM) and added with antibiotics (100 units/ml penicillin G and 100 μ g/ml streptomycin). The result, in the form of BM-MSC, was then cultured and expanded on petridish (Corning, China) 5 cm, then expanded again to two petridish 10 cm (passage 5) and incubated at 37°C containing 5% CO₂, so that adjacent cells could stick together, until a 90% confluent cell condition was obtained. About 24 hours later, the results were examined under an inverted microscope to determine the profile of the cell count with an inverted microscope.

BM-MSCs characterization

Characterization of rat BM-MSCs maturation was done by analyzing the expression of CD105+ and CD45- on

rat BM-MSCs culture using immunocytochemical staining technique. The immunocytochemical staining procedure was as follows: BM-MSCs were made into single cell with trypsination then fixed with acetone at -20°C for 10 minutes. Samples were blocked with 1% foetal calf serum (FCS) and treated with primary antibodies and incubated for 45 minutes to 1 hour. The sample was washed with PBS then reacted with secondary antibody and incubated 45 minutes to 1 hour at 37°C . The sample was then reacted with FCG conjugate Fab IgG labeled (Fluorescence isothiocyanat). The sample was washed with PBS and then added with 10 μl emerc oil above the cell, then covered with a glass cover. Samples were viewed with a fluorescence microscope after 1-3 hours with a green filter (Rantam et al 2014).

Melatonin exposure and osteogenic differentiation

Cells grown in two 10 cm petridish to 5-times passage were then transferred to 24 well plates and given osteogenic medium. This osteogenic medium consisted of DMEM-HG, 10% FCS, 100 nm dexamethasone, 0.1 μM ascorbic acid and 10 nm β -glycerophosphate. After the cells were attached to the plate wall, the cells were exposed to melatonin (Ebcam, China) corresponding to the treatment groups. Each well was chosen randomly, then divided into four groups, the K1 (melatonin 0 nM), K2 (melatonin 50 nm), K3 (Melatonin 100 nm), and K4 (melatonin 150 nm).

ERK1/2 expression

ERK activity 1/2 was assessed within 24 hours after cell culture. The ERK 1/2 protein phosphorylation assessment on the experimental model could verify the activation of pathways in the cell line by preparing cell lysate and could be easily analyzed using ELISA. Identified ERK 1/2 cells using ELISA Kit were planted on 24-well plate tissue culture. Then, the cells were fixed and blocked after treatment. After that, Anti-Phospho-ERK1 2 (Thr202/Tyr204) or Anti-ERK1/2 was pipetted into the wells and incubated for 1 hour at 37°C .

Then, the wells were washed and supplemented with HRP Conjugated anti-mouse IgG and incubated at room temperature for 1 hour. The wells were again, TMB substrate solution was added to every well and incubated for 30 minutes at room temperature in darkness and later the propositional color appeared according to the amount of protein. A 50 μl stop solution was added to each well which then turned from blue to yellow. Optical Density (OD) analysis was done immediately with ELISA technique at 450 nm wavelength (Raybiotech inc. 2004).

ALP level

Assessment of the effect of melatonin on ALP activity was performed on day 21 with RAT ALP ELISA kit (Elabscience, China). This examination was an in vitro quantitative examination using Sandwich-ELISA method by analyzing cell culture homogenates supernate obtained by separating cells from medium, then cell suspension was lysed with 200 μl radio immune precipitation assay (RIPA). Then, the lysis buffer was centrifuged with 15000xg 4°C for 15 minutes (Elabscience 2014).

The principle of ALP examination with this method was the addition of ALP specific antibodies to micro ELISA plate, then the addition of standard or sample as much as 100 μl , followed by the addition of biotinylated detection antibody and conjugated Avidin-Horseradish Peroxidase (HRP). ALP, biotinylated detection antibody and conjugated Avidin-Horseradish Peroxidase (HRP) showed blue color. The enzyme and substrate reaction ended with the addition of sulfuric acid solution and when the color turned yellow. Then the color was detected and the Optical Density (OD) was measured with a spectrophotometer (ELISA reader) at a wavelength of $450\text{ nm} \pm 2\text{ nm}$. The value of OD was proportional to the concentration of ALP. The concentration of ALP samples was assessed by comparing the sample OD on the standard curve (Elabscience 2014).

RESULTS

BM-MSCs characterization

Characterization of rat BM-MSCs was performed by analyzing the expression of CD45- and CD105 + on rat BM-MSCs culture. The characterization results of rat BM-MSCs showed a weak green luminescence on CD45- and strong luminescence on CD105+.

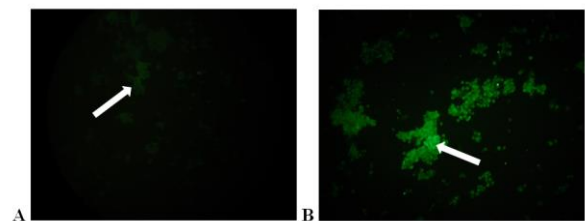


Fig. 1. Characterization of rat BM-MSCs using immunocytochemical techniques. (A) The expression of CD45-fluorescent is weak; (B) CD105 expression + fluorescent (fluorescence microscope, 200x magnification).

BM-MSCs culture

On observation of growth in early 24 hours, the majority of observable cells were hematopoietic stem cells and few mesenchymal stem cells appeared. Five days later, mesenchymal stem cells appeared to have attached and were spindle-shaped or fibroblast-like. On the day 12, the cells grew until it reached 90% confluence and more densely compacted.

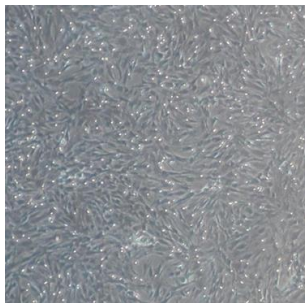


Fig. 2. BMSC that grows confluent, after validation, ready to be differentiated into more specific progenitor cells (inverted microscope, 200x magnification).

After passage 5, the cells were cultured on 1x24 medium well plates and divided into 4 groups, group 1 (control group) were BM-MSC group without melatonin [OS + M-]; group 2 was the BM-MSC group receiving melatonin [OS + M + (50 nM)], group 3 was the BM-MSC group receiving melatonin [OS + M + (100 nM)], and group 4 was the BM-MSC group receiving melatonin [OS + M + (150 nM)].

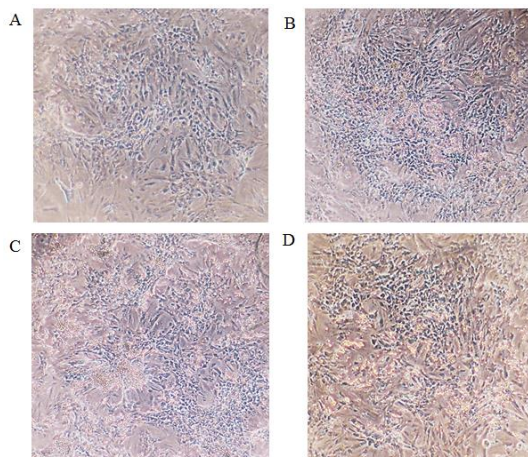


Fig. 3. The morphological features of BM-MSCs on day 21, control group (A) [OS + M-] (B) Treatment group [OS + M + (50 nM)]; (C) [OS + M + (100 nM)]; and (D) [OS + M + (150 nM)]; (inverted microscope, 200x magnification).

ERK1/2 expression

There were differences between the treatment groups, the control group and the group receiving melatonin doses of 50 nM, 100 nM and 150 nM. Mean ERK 1/2 expression in various groups showed a decrease in ERK 1/2 expression level along with increased dose of melatonin. The ERK 1/2 expression in the control group was 0.087 (SD 0.004726), 50nM 0.095 (SD 0.005508), 100nM 0.081 (SD 0.002309), 150nM 0.079 (SD 0.004359). The lowest ERK expression was in the BM-MSc group of mice exposed to melatonin dose of 150 nM (mean 0.079), and the highest was in the BM-MSCs group exposed to melatonin dose of 50 nM (mean 0.095).

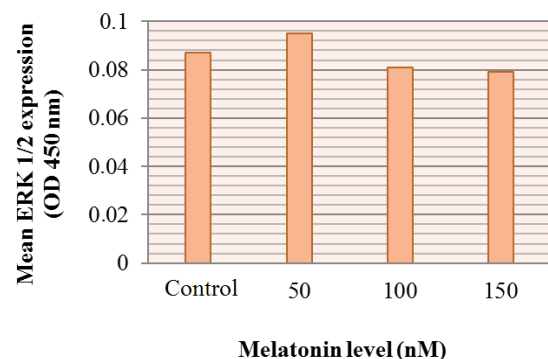


Fig. 4. Mean difference of ERK expression 1/2 between study groups.

ALP levels

There were no differences between the treatment groups, the control group and the group receiving melatonin doses of 50 nM, 100 nM and 150 nM. ALP levels in the control group with melatonin exposure of 50 nM, 100 nM, 150 nM were 0.128 ng/ml (SD 2.582), 0.130 ng/ml (SD 2.651), 0.117 ng/ml (SD 2.227), and 0.111 ng/ml (SD 2.020). The lowest ALP expression was obtained in BM-MSc group which was exposed to melatonin dose 150 nM, ie the average of 0.111 (ng/ml), and the highest was found in BM-MSCs group exposed to melatonin dose of 50 nM ie 0.130 (ng/ml). These data suggest that a decrease in mean ALP levels occurred with the addition of melatonin doses.

DISCUSSION

ERK 1/2 expression in the group exposed to melatonin 50 nM was higher than those in other groups. However, mean ERK 1/2 expression compared with that in group not exposed to melatonin (0 nM) did not show significant differences (ERK 1/2 expression in

melatonin exposure 0nM = 0.087; 50nM = 0.095). ERK 1/2 expression on BM-MSCs exposed to melatonin 50 nM, 100 nM and 150 nM showed a decrease of 0.095; 0.081; and 0.079 respectively. Among the four treatments, the administration of melatonin at a dose of 50 nM resulted in highest mean ERK 1/2 expression. It shows that exposure to melatonin at 50 nM is the optimal dose in increasing BM-MSCs rat differentiation.

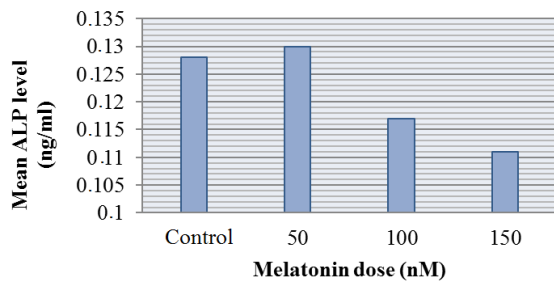


Fig. 5. Comparison of mean ALP levels between study groups.

This is in accordance with previous research results that indicate that melatonin can induce HMSCs and preosteoblasts into active osteoblasts through multiple signal transductions, including ERK 1/2 (Maria & Enderby 2014). Luchetti et al (2014) mentions that MSCs differentiation can also be regulated by melatonin via Wn³-catenin signaling and ERK 1/2 signaling. Radio et al (2006) explains that melatonin can increase the differentiation of mesenchymal stem cells through melatonin receptors 2 and ERK 1/2 signaling.

The process of ERK 1/2 phosphorylation will increase ERK 1/2 level in the cytoplasm causing ERK 1/2 to translocate to cell nucleus. Increased ERK 1/2 in cell nucleus causes increased transcriptional activity and phosphorylation of Runx2 and Osterix (Osx). Runx2 and Osx play a role in regulating the activity of osteoblastic specific genes (Kirkham & Cartmell, 2007; Zang, 2010). Increased activity of the osteoblastic specific gene, either through the ERK 1/2 or Wnt pathway, will trigger the differentiation of mesenchymal stem cells into activated osteoblast cells.

ALP is an enzyme secreted by osteoblasts when the osteoblasts are active. ALP is also a precipitate enzyme in matrix maturation phase. This enzyme serves to increase the concentration of inorganic phosphate and activate the collagen fiber so that it can cause the deposition of calcium salts. ALP in blood is an indicator of bone growth rate. The ALP expression is regulated by the ERK 1/2, Runx 2, Osx and WNT signals that interconnect with each other (Golub & Bataglia, 2007).

ALP levels in the BM-MSCs group exposed to melatonin 0nM, 50nM, 100nM, and 150nM showed no differences, but there was a decrease in ALP levels along with the addition of melatonin doses. Mean ALP levels of group 1 (50 nM) were found to be higher than those in the other groups. However, when compared to the control group (0 nM), the mean difference of ALP levels was not significantly different. The results of this study differed from previous research by Radio et al (2006) which states that melatonin doses of 50 nM can increase osteogenic differentiation characterized by increased ALP activity via the melatonin 2 (MTR2) and ERK 1/2 receptor pathways using Human adult BM-MSCs for 10 days. Sethi et al (2010) suggests that physiologic doses of melatonin can increase the activity of ALP, osteogenic genes (runx-2, osteocalcin and BMP2), and calcium deposition through the melatonin 2 (MTR2) and ERK 1/2 receptor pathways. Increased ALP activity and extracellular mineralization were also found in rat BM-MSCs exposed to physiological doses of melatonin in osteogenic medium (Zaminy et al 2008). The study explains that the mineralization process, which is part of the differentiation process of BM-MSCs into osteoblasts, is at day 14-28 with continuous exposure of melatonin.

The results can be influenced by several factors so that there are different results. Differences in rat BM-MSCs used are among the factors that can affect ALP levels. This can happen because every experimental animal has different stem cell properties. Another factor affecting the growth of BM-MSCs is their macro environment and micro environment. The macro environment in question is the laboratory condition, whether it is the instruments or the room used. The ability to adapt, maturity, proliferation and differentiation in micro environments also varies (Rantam et al 2014).

Differences in the time of examination may also be the cause of differences in ALP levels in the treatment group in this study from those in previous studies. In this study the ALP examination was performed on day 21, whereas, according to Birmingham et al. (2012), ALP levels occurred on days 5 to day 14. When examined in this study, we suspect ALP levels have decreased as it has passed the phase peak (5-14 days). The ALP levels dropped gradually. Melatonin is thought to increase rat BM-MSCs differentiation, so it runs faster and the highest ALP levels have occurred on day 14 or earlier. Thus, on day 21, rat BM-MSCs are at the end of the synthesis phase and extracellular matrix mineralization, and cellular ALP levels have decreased (Neve et al 2010). This assumption is consistent with the results of the study indicating that there is a lower level of ALP treatment groups compared to the control group. The group given melatonin will experience

differentiation faster than control, so the ALP will be faster at the highest peak level (5-14 days) and will decrease after passing the level. The statement was supported by an alizarin red examination on day 15 which suggested that there was a calcium deposition that indicated the presence of matrix mineralization. This is the initial phase of BM-MSCs cell differentiation into preosteoblasts and subsequently turned into active osteoblasts.

Melatonin is widely known for its function as an active substance to help sleep disorders. Melatonin, also known as "hormone of darkness", has several physiological functions, such as controlling circadian rhythms, regulating body temperature, activating the immune system, controlling the secretion of growth hormone and adrenocortico hormone, enhancing osteoblast differentiation in vitro and enhancing in vivo formation as well as having a hypnotic action for sleep initiation as a driver to open a "sleep gate" (Kräuchi & Wirz-Justice 2001).

The results showed that melatonin was able to increase BM-MSCs differentiation through increased ERK 1/2 activity pathway and ALP levels in the treatment group. There are several phases in differentiation of BM-MSCs into osteoblasts characterized by changes in MSCs to osteoprogenitors, preosteoblasts, early phases of osteoblasts, late phases of osteoblasts and mature osteoblasts. The phase of change in each phase has an important marker that indicates a change. ALP produced by osteoblasts is a marker that indicates that the preosteoblast has turned into an early phase osteoblast. The levels of ALP will continue to increase until the cells are in the final phase osteoblasts.

ALP is expressed and secreted by osteoblasts. The administration of melatonin in cultured mesenchymal stem cells may bind to its receptor, MTR2, then directly activate and phosphorylate the kinase cascade protein, ie MAPKKK (c-Raf-1), MAPKK (MEK 1/2), and MAPK (ERK 1/2) (Maria & Enderby 2014, Park et al 2011, Zhang & Liu 2002). The phosphorylation process of ERK 1/2 will increase the level of ERK 1/2 in the cytoplasm that causes ERK 1/2 to translocate to the cell nucleus. Increased ERK 1/2 in the cell nucleus causes increased transcriptional activity and phosphorylation of Runx2 and Osx. Runx2 and Osx play a role in regulating the activity of osteoblastic specific genes (Kirkham & Cartmell, 2007, Zang 2010). Increased activity of osteoblastic specific gene via ERK 1/2 pathway will trigger differentiation of mesenchymal stem cells into mature osteoblast cells that will secrete higher ALP. The results showed that the activity of ERK 1/2 increased in the mesenchymal stem cell group given melatonin dose 50 nM, while those in other

treatment groups were not higher than that in the control group. The increase was also obtained at ALP levels in the 50 nM treatment group although only slightly differed from the control group, whereas in other treatment groups the increase was not higher than that in the control group. This is due to high doses of melatonin. While the ERK expression of 1/2 increased in the mesenchymal stem cell group given melatonin doses of 50 nM, that in the other treatment groups were not higher than that in the control group.

Osteoporosis is a progressive systemic skeletal disease, characterized by low bone mass and damage to the microarchitecture of bone tissue resulting in increased bone fragility and a tendency to fracture. In patients with osteoporosis, the bone will be reabsorbed rapidly by osteoclasts rather than replacement by osteoblasts so that the bones become weak and easily fracture. Although not new, melatonin can be recommended to be a therapy that can improve and regulate the process of bone formation and resorption. Pino et al (2012), reported that in osteoporotic patients, MSCs tend to differentiate into adipose, not to osteoblasts, because there is a disturbance in intrinsic properties and MSCs microenvironment. This suggests that MSCs therapy for osteoporosis patients can be a good new hope and melatonin may be considered as a growth factor supplement to obtain maximum MSCs expansion and regulate for MSCs to differentiate in osteogenic (Zaminy et al 2008, Pino et al 2012).

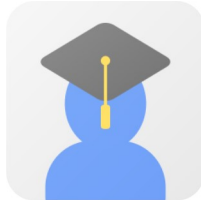
CONCLUSION

In the culture of rat BM-MSCs exposed to melatonin an increase in ERK expression 1/2 and no increase in ALP levels were found. The administration of melatonin 50 nM is the optimal dose to increase the differentiation of cultured rat BM-MSCs into active osteoblasts.

REFERENCES



- Birmingham E, Niebur GL, McHugh PE, Shaw G, Barry FP, McNamara LM (2012). Osteogenic differentiation of mesenchymal stem cells is regulated by osteocyte and osteoblast cells in a simplified bone niche. *European Cells And Materials* 23, 13-27
- Elabscience (2014). Rat ALP (Alkaline Phosphatase) ELISA Kit. 5th Edition. Elabscience Biotechnology Co, Ltd. Available from www.elabscience.com
- Golub EE, Boesze-Battaglia K (2007). The role of alkaline phosphatase in mineralization. *Current opinion in Orthopaedics* 18, 444-8

- Kirkham GR, Cartmell SH (2007). Genes and proteins involved in the regulation of osteogenesis. *Topics in Tissue Engineering* 3, 1-22
- Kräuchi K, Wirz-Justice A (2001). circadian clues to sleep onset mechanisms. *Neuropsychopharmacology* 25, S92-6
- Maria S, Witt-Enderby PA (2014). Melatonin effects on bone: potential use for the prevention and treatment for osteopenia, osteoporosis, and periodontal disease and for use in bone-grafting procedures. *Journal Pineal Research* 56, 115-25
- Luchetti F, Canonico B, Bartolini D, Arcangeletti M, Ciffolilli S, Murdolo G, Piroddi M, Papa S, Reiter RJ, Galli F (2014). Melatonin regulates mesenchymal stem cell differentiation: a Review. *Journal Pineal Research* 56, 382-97
- Neve A, Corrado A, Cantatore FP (2011). Osteoblast Physiology in normal and pathological Condition. *Cell and Tissue Research* 343, 289-302
- Park KH, Kang JW, Lee EM, Kim JS, Rhee YH, Kim M, Jeong SJ, Park YG, Kim SH (2011). Melatonin promotes osteoblastic differentiation through the BMP/ERK/Wnt signaling pathways. *Journal Pineal Research* 51, 187-94
- Pino AM, Rosen CJ, Rodríguez JP, 2012. In osteoporosis, differentiation of mesenchymal stem cells (MSCs) improves bone marrow adipogenesis. *Biological Research* 45, 279-87
- Radio NM, Doctor JS, Witt-Enderby PA (2006). Melatonin enhances alkaline phosphatase activity in differentiating human adult mesenchymal stem cells grown in osteogenic medium via MT2 melatonin receptors and the MEK/ERK1/2 signaling cascade. *Journal of Pineal Research* 40, 332-42
- Rantam FA, Ferdiansyah, Purwati (2014). *Stem Cell; meenchymal, Hematopoetik dan Model Aplikasi*. 2nd Ed. Surabaya, Airlangga University Press, p 23-40
- Raybiotech, inc (2004). *RayBio® Cell?Based Human/Mouse/Rat ERK1/2 (Thr202/Tyr204) Phosphorylation ELISA Kit*. Available from www.raybiotech.com
- Sethi S, Radio NM, Kotlarczyk MP, Chen CT, Wei YH, Jockers R, Witt-Enderby PA (2010). Determination of the minimal melatonin exposure required to induce osteoblast differentiation from human mesenchymal stem cells and these effects on downstream signaling pathways. *Journal of Pineal Research* 49, 222-38
- Zaminy A, Ragerdi Kashani I, Barbarestani M, Hedayatpour A, Mahmoudi R, Farzaneh Nejad A (2008). Osteogenic differentiation of rat mesenchymal stem cells from adipose tissue in comparison with bone marrow mesenchymal stem cells: Melatonin as a differentiation factor. *Iranian Biomedical Journal* 12, 133-41
- Zhang W, Liu HT (2002). MAPK signal pathways in the regulation of cell proliferation in mammalian cells. *Cell Research* 12, 9-18



FOLIA MEDICA INDONESIAANA

 [UNIVERSITAS AIRLANGGA](#)

 P-ISSN : 23558393 <> E-ISSN : 2599056X  Subject Area : Education



0.525

Impact Factor



1020

Google Citations



Sinta 2

Current Accreditation

 [Google Scholar](#)  [Garuda](#)  [Website](#)  [Editor URL](#)

History Accreditation

2018

2020

2021

2022

2023

2024

2025

Garuda [Google Scholar](#)

[Longer Lag Time in Early-Stage Retinoblastoma](#)

Faculty of Medicine, Universitas Airlangga

 [Folia Medica Indonesiana Vol. 58 No. 2 \(2022\): June 103-107](#)

 2022

 [DOI: 10.20473/fmi.v58i2.24975](#)

 [Accred : Sinta 2](#)

[The AKT Pathway and Satellite Cell Activation in Skeletal Muscle Mass Regulation](#)

Faculty of Medicine, Universitas Airlangga

 [Folia Medica Indonesiana Vol. 58 No. 1 \(2022\): March 68-73](#)

 2022

 [DOI: 10.20473/fmi.v58i1.13354](#)

 [Accred : Sinta 2](#)

[Viral Load And Cd4+ among Hiv/Aids Patients Receiving Antiretroviral Therapy In Jayawijaya District, Papua Province, Indonesia](#)

Faculty of Medicine, Universitas Airlangga

 [Folia Medica Indonesiana Vol. 58 No. 1 \(2022\): March 10-14](#)

 2022

 [DOI: 10.20473/fmi.v58i1.18247](#)

 [Accred : Sinta 2](#)

[Back Matter Vol.58 No.1 March 2022](#)

Faculty of Medicine, Universitas Airlangga

 [Folia Medica Indonesiana Vol. 58 No. 1 \(2022\): March](#)

 2022

 [DOI: 10.20473/fmi.v58i1.34145](#)

 [Accred : Sinta 2](#)

[Acute Diarrhea Patients among Children Under Five Hospitalized in a Tertiary Hospital in East Java, Indonesia](#)

Faculty of Medicine, Universitas Airlangga

 [Folia Medica Indonesiana Vol. 58 No. 1 \(2022\): March 33-38](#)



**KOMISI KELAIKAN ETIK PENELITIAN KESEHATAN (KKEPK)
FAKULTAS KEDOKTERAN GIGI UNIVERSITAS AIRLANGGA**

**KETERANGAN KELAIKAN ETIK
("ETHICAL CLEARANCE")**

Nomor : 26/KKEPK.FKG/II/2016

Komisi Kelaikan Etik Penelitian Kesehatan (KKEPK) Fakultas Kedokteran Gigi Universitas Airlangga, telah mengkaji secara seksama rancangan penelitian yang diusulkan, maka dengan ini menyatakan bahwa penelitian berjudul :

**" PENGARUH MELATONIN TERHADAP EKSPRESI ERK 1/2
DAN KADAR ALKALINE PHOSPHATASE (ALP) PADA SEL OSTEOBLAS MATUR "**

Peneliti Utama : **Yugi Hari Chandra Purnama**
Unit / Lembaga/ Tempat Penelitian : - Lab.Stem Cell Institute of Tropical Disease/
Universitas Airlangga Surabaya.

DINYATAKAN LAIK ETIK

Surabaya, 10 Pebruari 2016
Ketua,



Prof. Dr. M. Rubianto, drg., MS., Sp.Perio (K)
NIP.195009081978021001