

Publish fast. Openly. Without restrictions.



F1000Research is an **Open Research** publishing platform for scientists, scholars and clinicians offering rapid publication of articles and other research outputs without editorial bias.

HOW IT WORKS (/ABOUT)

SUBJECT AREAS | [Browse all](#) →

Natural Sciences

Medical and Health
Sciences

Social Sciences

Engineering and Technology

Agricultural and Veterinary
Sciences

Humanities and the Arts

RECENT ARTICLES | [Browse all](#) →

25 NOVEMBER 2022

Characteristics and contributing factors of adverse drug reactions: an analytical stud...

25 NOVEMBER 2022

Validation of an instrument in Latin America to measure fear perception of th...

25 NOVEMBER 2022

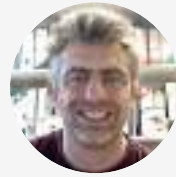
Spatial association of land-use areas and disease occurred by pesticide poisoning i...





*When reviewers comment openly on a paper that is already published, they sudden
and helpful.*

Etienne Joly
IPBS, CNRS
Université de Toulouse
Toulouse, France



Why you should publish with us



The F1000Research website uses cookies. By continuing to browse the site, you are agreeing to our use of cookies. [Find out more »](#)



Benefits for Researchers

- Enables authors, not editors, to decide what they wish to publish.
- Authors suggest peer reviewers and control the process.
- All types of research can be published rapidly: traditional articles, data sets, null results, protocols, case reports, incremental findings and more.



Benefits for Research

- Aims to shift the way research and researchers are evaluated.
- Moves away from journal-based measures towards direct assessment of individual outputs.
- Supports research assessment based on the intrinsic value of the research, not the venue of publication.



Benefits for Society

- Reduces the barrier to collaborative research through data sharing, transparency and attribution.
- Reduces research waste and helps to remove the bias in our understanding of research.
- Enables others to build upon new ideas right away, wherever and whoever they are.



Featured Updates



24 Nov 2022

Using global frameworks to assess the performance and impact of local research infrastructures

Ana Portugal Melo



22 Nov 2022

Implementing the SAGER guidelines to counter sex and gender bias in research

Jennifer Copeland



17 Nov 2022

Who is responsible for reproducibility?

Tom Sinden and Jack Brook

[VIEW ALL UPDATES \(HTTPS://BLOG.F1000.COM/BLOGS/F1000RESEARCH/\)](https://blog.f1000.com/blogs/f1000research/)



The F1000Research website uses cookies. By continuing to browse the site, you are agreeing to our use of cookies. [Find out more »](#)

Our Gateways

Gateways provide personalized portals for institutions or organizations, with links to other resources.



Médecins Sans Frontières

MSF publish articles, posters, slides and videos from their Scientific Days, as well as research carried out by their doctors in the field.



ELIXIR

The ELIXIR gateway publishes articles, use cases, strategy documents, technology developments, reviews, posters and slides relating to ELIXIR's activities.



Global Open Data for Agriculture and Nutrition

The GODAN gateway publishes articles on open agriculture or nutrition projects, tools and analyses, together with reports by the GODAN initiative.



International Decision Support Initiative

iDSI publishes research articles, process and methods guides, country case studies, policy briefs and more to enhance priority-setting in health.

[BROWSE ALL GATEWAYS \(/GATEWAYS\)](/GATEWAYS)

An innovative open access publishing platform offering rapid publication and open peer review, whilst supporting data deposition and sharing.

BROWSE

GATEWAYS

COLLECTIONS

HOW IT WORKS

BLOG

CONTACT

PRIVACY NOTICE

RSS



Follow us



[Home](#) » [Browse Articles](#)

[ARTICLES](#) [FACULTY REVIEWS](#) [DOCUMENTS](#) [POSTERS](#) [SLIDES](#)

FILTERS ▾ 201-220 of 5,843 ARTICLES < >

CASE REPORT  metrics

AWAITING PEER REVIEW

Case Report: Tropical sprue, diagnostic challenges of an old but unrecognized disease [version 1; peer review: awaiting peer review]

Jihene Guissouma, Hana Ben Ali, Hend Allouche, Insaf Trabelsi, Olfa Hammami, Yosra Yahia, Ilhem Mchirgui, Marwa Mabrouk, Hatem Ghadhoun

 PEER REVIEWERS *Invited*

PUBLISHED 24 Oct 2022

RESEARCH ARTICLE  metrics



A critical discourse analysis of the Quebec media's portrayal of older adults in residences and long-term care homes pre- and peri-COVID-19 [version 1; peer review: 1 approved with reservations]

Olivia Archambault, Martine Lagacé, Sarah Anne Fraser

 PEER REVIEWERS *Mandy Stanley; Loredana Ivan*

PUBLISHED 21 Oct 2022

CLINICAL PRACTICE ARTICLE  metrics

AWAITING PEER REVIEW

Plasmodium knowlesi infection in East Kalimantan, Indonesia [version 1; peer review: awaiting peer review]

Carta A. Gunawan, Loly R.D. Siagian, Edwin Prasetya

 PEER REVIEWERS *Invited*

STUDY PROTOCOL  metrics

AWAITING PEER REVIEW

Epidemiology of pediatric schistosomiasis in hard-to-reach areas and populations: A scoping review protocol [version 1; peer review: awaiting peer review]

Phyllis Munyiva Isaiah, Marta Palmeirim, Peter Steinmann

 PEER REVIEWERS *Invited*

FUNDER Amt für Ausbildungsbeiträge

PUBLISHED 21 Oct 2022

RESEARCH ARTICLE  metrics



REVISED Trends in authorship demographics for manuscripts published in endocrine journals - A 70-year analysis [version 2; peer review: 1 approved with reservations]

Arpit Jain, Hritik Madan, Kamaldeep Singh, Yash Agarwal, Bharat Midha, Shreya Gulati, Priyanka Batra, Ankur Batra, Salil Chaturvedi, Shiny Teja Kollu, Vishal Reddy Bejugam, Hyesung Kim, Priyanshu Jain, Ipsa Arora, Madhav Prabhu, Shreyas Arya, Yashasvi Chugh, Shobhit Piplani

 PEER REVIEWER *Kunal Mahajan*


LATEST VERSION PUBLISHED 20 Oct 2022

RESEARCH ARTICLE  metrics



REVISED Metabolites of Pinang Yaki (*Areca vestiaria*) Fruit Extract: A Metabolite Profiling Study [version 3; peer review: 1 approved, 1 approved with reservations, 1 not approved]

Herny Emma Inonta Simbala, Fahrul Nurkolis, Nelly Mayulu, Linda Wilhelma Ancella Rotty

 PEER REVIEWERS *Toto Sudargo; Zanariah Hashim; Nawaporn Vinayavekhin*

FUNDER Direktorat Riset dan Pengabdian Masyarakat Badan Riset dan Inovasi Nasional Indonesia (Directorate of Research and Community Service of the

RESEARCH ARTICLE  metrics



REVISED

Returning to work at school during the COVID -19 pandemic, is it stressful for schoolteachers? Assessment of immediate psychological effects: a cross sectional study [version 2; peer review: 2 approved]

Sowmini Padmanabh Kamath, Prasanna Mithra, Jayashree K, Vaman Kulkarni, Jayateertha Joshi, Padmanabh Kamath, Bhaskaran Unnikrishnan, Keshava Pai

 **PEER REVIEWERS** *Ajay Risal; Rajesh Mithur*

LATEST VERSION PUBLISHED 20 Oct 2022

RESEARCH ARTICLE  metrics



Mulberroside A could serve as a pan inhibitor for the tyrosine kinase domains of the HER family [version 1; peer review: 1 approved with reservations]

Jaafar Wadi, Othman Sagheer

 **PEER REVIEWER** *Tahir Ali Chohan*

PUBLISHED 20 Oct 2022

RESEARCH ARTICLE  metrics

AWAITING PEER REVIEW

Green campus universities: case studies on problems and prospects [version 1; peer review: awaiting peer review]

Junainah Mahdee, Normazalila Abu Bakar, Vincent Oh Kim Seng

 **PEER REVIEWERS** *Invited*

FUNDER Multimedia University

PUBLISHED 20 Oct 2022

RESEARCH ARTICLE  metrics

AWAITING PEER REVIEW



***mutans* strains from dental carries of diabetic patients using conventional methods in Sudan. [version 1; peer review: awaiting peer review]**

Nuha M. Elhage, S.M. El Sanousi, Rami Y Hassab Elrasul, Wafa I.Elhag

 PEER REVIEWERS Invited


PUBLISHED 20 Oct 2022

RESEARCH ARTICLE  metrics



REVISED Effectiveness of forest honey (*Apis dorsata*) as therapy for ovarian failure causing malnutrition [version 2; peer review: 2 approved]

Erma Safitri, Hery Purnobasuki, Muhammad Thohawi Elziyad Purnama, Shekhar Chhetri

 PEER REVIEWERS Ujjwal Layek; Aulanni'am Aulanni'am and Husnul Khotimah

FUNDER The Indonesian Directorate General Higher Education

LATEST VERSION PUBLISHED 20 Oct 2022

DATA NOTE  metrics

AWAITING PEER REVIEW

SPME-GC-HRTOF-MS dataset of fermented maize flour volatilome [version 1; peer review: awaiting peer review]

Oluwafemi Ayodeji Adebo, Sefater Gbashi, Yusuf Olamide Kewuyemi, Sunday Samuel Sobowale, Adedola Sulaiman Adeboye, Patrick Berka Njobeh, Samson Adeoye Oyeyinka, Jonathan D. Wilkin, Chiemela Enyinnaya Chinma

 PEER REVIEWERS Invited

FUNDERS 2022 NRF Emerging Researcher Award Grant | National Research Foundation (NRF), South Africa Thuthuka Grant

PUBLISHED 20 Oct 2022

SYSTEMATIC REVIEW  metrics



review: 1 approved with reservations, 2 not approved]

Carl J. Heneghan, Elizabeth A. Spencer, Jon Brassey, Annette Plüddemann, Igbo J. Onakpoya, Jason L. Oke, David H. Evans, John M. Conly, Tom Jefferson

PEER REVIEWERS *David R. Tomlinson; Nancy H. L. Leung; Maosheng Yao*

FUNDERS World Health Organization | NIHR School for Primary Care Research

LATEST VERSION PUBLISHED 19 Oct 2022

RESEARCH ARTICLE  metrics 

REVISED Hypoxic preconditioning promotes survival of human adipose derived mesenchymal stem cell via expression of prosurvival and proangiogenic biomarkers [version 2; peer review: 1 approved with reservations]

I Gde Rurus Suryawan, Budi Susetyo Pikir, Fedik Abdul Rantam, Anudya Kartika Ratri, Ricardo Adrian Nugraha

PEER REVIEWER *Gun-Jae Jeong*

LATEST VERSION PUBLISHED 19 Oct 2022

METHOD ARTICLE  metrics 

The effect of the scale of grant scoring on ranking accuracy [version 1; peer review: 1 approved with reservations]

Peter M. Visscher, Loic Yengo

PEER REVIEWER *Rachel Heyard*

FUNDER The Australian Research Council

PUBLISHED 19 Oct 2022

RESEARCH ARTICLE  metrics

AWAITING PEER REVIEW

Chemical equilibrium model comprising calcaneus

awaiting peer review]

Kazuto Mitsuhashi, Yasunori Imagawa, Yuta Kojima, Naokata Ishii, Yasushi Kishimoto

 PEER REVIEWERS *Invited*

FUNDER Japan Society for the Promotion of Science

PUBLISHED 19 Oct 2022

RESEARCH ARTICLE  metrics

AWAITING PEER REVIEW

Effects of the COVID-19 pandemic on university-based research conduct and training: Exploring university-based researchers' perspectives and experiences [version 1; peer review: awaiting peer review]

Marcia G. Ory, Shinduk Lee, Tiffany A. Radcliff, Sagar Jani, Allison Rice-Ficht, Amy L. Waer

 PEER REVIEWERS *Invited*


PUBLISHED 19 Oct 2022

RESEARCH ARTICLE  metrics



REVISED Interplay between COVID-19 vaccines and social measures for ending the SARS-CoV-2 pandemic [version 2; peer review: 1 approved with reservations, 1 not approved]

Glenn Young, Pengcheng Xiao, Ken Newcomb, Edwin Michael

 PEER REVIEWERS *Sam Moore; Matthew Adewole*

LATEST VERSION PUBLISHED 18 Oct 2022

RESEARCH ARTICLE  metrics



REVISED The effect of chewing-betel habits on blood glucose levels in the Karo ethnic community, Karo district [version 3: peer review: 1 approved]



 **PEER REVIEWER** Mustofa Mustofa

FUNDER Ministry of Science and Higher Education

LATEST VERSION PUBLISHED 18 Oct 2022

RESEARCH ARTICLE  metrics

AWAITING PEER REVIEW

Conceptualizing university students' food choices based on theory of planned behavior [version 1; peer review: awaiting peer review]

Kshama Vishwakarma, Varalakshmi Chandra Sekaran, Vidya Patwardhan, Asha Kamath

 **PEER REVIEWERS** Invited

PUBLISHED 18 Oct 2022

201-220 of 5,843 ARTICLES



PUBLISH YOUR RESEARCH



ARTICLES

We publish a wide range of article types in science, engineering, medicine, social sciences and humanities, with no editorial biases.

SUBMIT AN ARTICLE (/FOR-AUTHORS/PUBLISH-YOUR-RESEARCH)


See [guidelines](#) and [policies](#).





RESEARCH ARTICLE

Effectiveness of forest honey (*Apis dorsata*) as therapy for ovarian failure causing malnutrition [version 1; peer review: 1 approved, 1 approved with reservations]

Erma Safitri¹, Hery Purnobasuki², Muhammad Thohawi Elziyad Purnama ³, Shekhar Chhetri⁴

¹Division of Veterinary Reproduction, Department of Veterinary Science, Faculty of Veterinary Medicine, Universitas Airlangga, Surabaya, East Java, 60115, Indonesia

²Department of Biology, Faculty of Science and Technology, Universitas Airlangga, Surabaya, East Java, 60115, Indonesia

³Division of Veterinary Anatomy, Department of Veterinary Science, Faculty of Veterinary Medicine, Universitas Airlangga, Surabaya, East Java, 60115, Indonesia

⁴Department of Animal Science, College of Natural Resources, Royal University of Bhutan, Lobesa, Punakha, 13001, Bhutan

V1 First published: 12 May 2022, 11:512
<https://doi.org/10.12688/f1000research.110660.1>

Latest published: 20 Oct 2022, 11:512
<https://doi.org/10.12688/f1000research.110660.2>

Abstract

Background: Malnutrition is a crucial issue that contributes to approximately 45% of deaths among children under 5 years old and even >50% of deaths when accompanied by diarrhea. Several studies have stated that the use of honey can overcome cases of infertility due to malnutrition.





Methods: An infertile female rat model with a degenerative ovary was induced with malnutrition through a 5-day food fasting but still had drinking water. The administration of (T1) 30% (v/v) and (T2) 50% (v/v) forest honey (*Apis dorsata*) were performed for ten consecutive days, whereas the (T+) group was fasted and not administered forest honey and the (T-) group has not fasted and not administered forest honey. Superoxide dismutase, malondialdehyde, IL-13 and TNF- α cytokine expressions, and ovarian tissue regeneration were analyzed.


Results: Antioxidant activity (SOD) was significantly different ($p < 0.05$) in T1 (65.24 ± 7.53), T2 (74.16 ± 12.3), and T- (65.09 ± 6.56) compared with T+ (41.76 ± 8.51). Oxidative stress (MDA) was significantly different ($p < 0.05$) in T1 (9.71 ± 1.53), T2 (9.23 ± 0.96), and T- (9.83 ± 1.46) compared with T+ (15.28 ± 1.61). Anti-inflammatory cytokine (IL-13) expression was significantly different ($p < 0.05$) in T1 (5.30 ± 2.31), T2 (9.80 ± 2.53), and T- (0.30 ± 0.48) compared with T+ (2.70 ± 1.57). Pro-inflammatory cytokine (TNF- α) expression was significantly different ($p < 0.05$) in T1 (4.40 ± 3.02), T2 (2.50 ± 1.65), and T- (0.30 ± 0.48) compared with T+ (9.50 ± 1.78). Ovarian tissue regeneration was significantly different ($p < 0.05$) in T- (8.6 ± 0.69) and T2 (5.10 ± 0.99) compared with T1 (0.7 ± 0.95) and T+ (0.3 ± 0.67).


Conclusion: The 10-day administration of 50% (v/v) forest honey can


Open Peer Review

Approval Status  

	1	2
version 2 (revision) 20 Oct 2022	 view	
		
version 1 12 May 2022	 view	 view

1. **Ujjwal Layek** , Rampurhat College, Rampurhat, India

2. **Aulanni'am Aulanni'am** , Universitas Brawijaya, Malang, Indonesia

Husnul Khotimah , Universitas Brawijaya, Malang, Indonesia

Any reports and responses or comments on the article can be found at the end of the article.

be an effective therapy for ovarian failure that caused malnutrition in the female rat model.

Keywords

forest honey, ovarian failure, malnutrition, oxidative stress, inflammation



This article is included in the [Agriculture, Food and Nutrition gateway](#).

Corresponding author: Erma Safitri (erma-s@fkh.unair.ac.id)

Author roles: **Safitri E:** Conceptualization, Methodology, Supervision, Writing – Original Draft Preparation; **Purnobasuki H:** Data Curation, Formal Analysis, Investigation, Resources, Software, Validation, Visualization, Writing – Review & Editing; **Purnama MTE:** Data Curation, Formal Analysis, Investigation; **Chhetri S:** Data Curation, Writing – Review & Editing

Competing interests: No competing interests were disclosed.

Grant information: This study was granted by The Indonesian Directorate General Higher Education (DIKTI) for funding this study (Grant number: 4/AMD/E1/ KP.PTNBH/2022).

Copyright: © 2022 Safitri E *et al.* This is an open access article distributed under the terms of the [Creative Commons Attribution License](#), which permits unrestricted use, distribution, and reproduction in any medium, provided the original work is properly cited.

How to cite this article: Safitri E, Purnobasuki H, Purnama MTE and Chhetri S. **Effectiveness of forest honey (*Apis dorsata*) as therapy for ovarian failure causing malnutrition [version 1; peer review: 1 approved, 1 approved with reservations]** F1000Research 2022, 11:512 <https://doi.org/10.12688/f1000research.110660.1>

First published: 12 May 2022, 11:512 <https://doi.org/10.12688/f1000research.110660.1>

Introduction

Malnutrition in the form of protein–energy malnutrition (PEM) is a challenge in developing countries, including Indonesia.¹ Malnutrition is the imbalance between intake and nutritional needs, resulting in a decrease in body weight, composition, and physical function.² Furthermore, malnutrition contributes to approximately 45% of deaths among children under 5 years old.³ PEM accompanied by diarrhea has been reported to contribute >50% of deaths among children.⁴ In experimental animals, PEM causes infertility due to intestinal⁵ and liver degeneration,⁶ which may progress to testicular^{7–9} and ovarian degeneration.¹⁰

Malnutrition is closely related to oxidative stress, which is an increase in reactive oxygen species (ROS) that causes damage to cellular components, such as DNA, proteins, and lipids.¹¹ The binding between ROS and lipids can lead to increased levels of malondialdehyde (MDA), a biomarker of increased lipid peroxidation.¹² The increased ROS in malnutrition conditions can cause a decrease in the amount of antioxidants in the body. One of the antioxidants that play a significant role in protection from ROS reactions is superoxide dismutase (SOD).¹³ SOD is an essential enzyme (scavenger) that plays a role in preventing the oxidation process. Decreased antioxidant protection, such as SOD, can lead to various disorders in the form of an immunological response, such as an excessive inflammatory process.

Inflammation is one of the responses of the body's immune system in recognizing and eliminating harmful components, thereby promoting the healing process. The inflammatory process involves communication between various components in the body. Several components involved in the inflammatory process include tumor necrosis factor alpha (TNF- α) and interleukin 13 (IL-13). TNF- α and IL-13 are cytokines that are formed in response to inflammatory reactions. The two cytokines act antagonistically. TNF- α is a pro-inflammatory cytokine that plays a role in systemic inflammation and one of the cytokines that complete the acute phase reaction,¹⁴ whereas IL-13 is an anti-inflammatory cytokine. TNF- α is primarily produced by activated macrophages although can be produced by other cells. The anti-inflammatory response is controlled mainly by IL-13, which is a multifunctional cytokine.¹⁵

According to several previous studies, PEM can be overcome by monofloral honey administration.^{7–9,16} Honey has various benefits both as a food source and for medicinal purposes, including antibacterial, anti-inflammatory, anti-apoptotic, and antioxidant properties.¹⁷ Honey consists of various compounds, which are divided into major and minor compounds. The major compounds are carbohydrates in the form of monosaccharides (fructose and glucose), disaccharides (sucrose, maltose), and oligosaccharides; whereas the minor compounds are amino acids, enzymes, vitamins, minerals, and polyphenols.^{17,18} Honey is grouped into two types: monofloral (derived from one type of flower) and polyfloral (more than one type of flower).¹⁹

Forest honey from *Apis dorsata* bees is one example of polyfloral honey that can be found in Indonesia. The phenolic and flavonoid content of forest honey (*A. dorsata*) is a strong combination as an antioxidant.²⁰ The antioxidants possessed by forest honey (*A. dorsata*) have a higher value than those of monofloral honey.

Some studies have been performed regarding the administration of honey.^{5,16,21,22} Homing and differentiation of stem cells were expected in the honey administration in the animal model with ovarian failure.⁵ Stem cells are derived and differentiated by culture originating from the body itself, facilitating follicle regeneration in the ovary. Ovarian regeneration can be proven by molecular and microscopic studies.^{23,24} The microscopic histological appearance will reveal ovarian tissue regeneration at the molecular level, wherein several expressions, such as cluster of differentiation like CD45+ and CD34+ from biomarker of hematopoietic stem cells,^{5,25} expression of transforming growth factor- β ,²¹ growth differentiation factor-9,^{26,27} vascular endothelial growth factor, and granulocyte colony-stimulating factor of the ovary, were evident.^{21,26,27}

Honey has properties that promote wound healing from several antibacterial agents, stimulate the growth of wound tissue, and facilitate an anti-inflammatory response, which rapidly reduces pain, edema, and exudate production.²⁸ Therefore, it is necessary to know about the effect of forest honey (*A. dorsata*) on SOD and MDA levels, TNF- α and IL-13 expressions, and ovarian tissue regeneration in female white rats (*Rattus norvegicus*) experiencing PEM.

Methods

Ethical approval

This study was approved by the ethical committee through the Ethical Clearance institution (Komisi Etik Penelitian), Animal Care and Use Committee, Faculty of Veterinary Medicine, University of Airlangga, Surabaya, Indonesia (Number 065-KE).

Ovarian tissue degeneration of female rats

Ovarian tissue degeneration was achieved by performing a study using a female rat model. Very healthy female Wistar rats (*R. norvegicus*) with a body weight of 250–300 g each, 8–10 weeks old, were used in this case study. The female rats went without food for 5 days, although they were provided with water.^{5,10} The rats were placed in individual plastic cages in the Experimental Animal Laboratory at the Veterinary Medicine Faculty, Universitas Airlangga. Experimental animal laboratories were designed with adequate air circulation, humidity and temperature regulation. In addition, the use of litter and counterflow replacement was performed to ensure eligibility during the study.

The administration of honey on the malnutrition-induced animal model

A total of 40 rats were divided into four groups as follows: normal rats, without honey (T–); infertile rats, without honey (T+); infertile rats administered 30% (v/v) honey for 10 days (T1); and infertile rats administered 50% (v/v) honey for 10 days (T2).

Forest honey (*A. dorsata*) from the forest in Batu Malang East Java, Indonesia, was used in this study. MDA and SOD levels, TNF- α and IL-13 expressions, and subsequent folliculogenesis and ovarian tissue regeneration were analyzed. The analysis of MDA and SOD levels was performed using the ELISA method.^{29,30} Pro-inflammatory and anti-inflammatory properties of TNF- α ¹⁴ and IL-13¹⁵ expressions were analyzed using the immunohistochemical (IHC) method in the ovarian tissue.^{5,10} Folliculogenesis was indicated by an increase in the follicle De Graaf expression³¹ and ovarian tissue regeneration using routine hematoxylin and eosin (H&E) staining.¹⁰

MDA and SOD level analysis in serum

The analysis of MDA and SOD levels in serum was performed using the double-antibody sandwich ELISA kit.^{29,30} The working principle of this kit is identified by precoated capture antibody (anti-rat MDA monoclonal antibody/anti-rat SOD monoclonal antibody) and detection antibody (biotinylated polyclonal antibody) simultaneously. Furthermore, staining was performed using a substrate of 3,3',5,5'-tetramethylbenzidine (TMB). TMB reacts through peroxidase activity to form a blue color, and the addition of a stop solution causes a yellow color change. Color intensity has a positive correlation with the target analyte quantity being analyzed.

Serum sample preparation was performed by cooling the extracted blood at 4°C for one night. The serum from the blood sample that has been coagulated and contained in the top layer was then separated and centrifuged for 10 min at a speed of 1,000–3,000 rpm. The supernatant formed can be directly used in ELISA testing or stored (lasts for 1–3 months if stored at a temperature of –20°C to –80°C).

The ELISA test was performed by preparing wells from the ELISA plate of serum samples, standards, and blanks. Initially, 100 μ L of serum and blank samples were added to each well and incubated at 37°C for 90 min, and the ELISA plate was subsequently washed two times using a 350- μ L wash buffer in each well. After, the liquid was removed by placing the blotting paper on the ELISA plate to remove the liquid. Then, a 100- μ L biotinylated polyclonal antibody was added to each well and incubated at 37°C for 30 min. The ELISA plate was then washed five times and dried using the abovementioned method. Next, 100 μ L of TMB was added to each well and incubated at 37°C until a color gradient was formed with a maximum time of 30 min. Then, 100 μ L of stop solution was added, and the ELISA plate was subsequently read at 450 nm optical density. ELISA plate readings were immediately performed.

IHC methods for TNF- α and IL-13 analyses

IHC analysis was performed to determine the expressions of TNF- α ¹⁴ and IL-13.¹⁵ First, an incision was made through the ovarian tissues transversely from paraffin blocks. IHC techniques were performed using monoclonal antibodies anti-TNF- α and IL-13. TNF- α and IL-13 expression analyses were performed using a light microscope with a magnification of 400 \times . TNF- α and IL-13 expressions were indicated by the number of cells with brownish discoloration due to DAB-chromogen in each incision.³² The five fields of view were assessed for each slide through a scoring system. The following IHC scoring system was used: IHC score=A \times B, wherein A denotes the wide percentage of expressions and B is the intensity of the chromogen color (Table 1).³³

Histological and follicle De Graaf analyses of the ovary

The identification of follicle De Graaf and ovarian tissue regeneration was performed using light microscopy examination.³¹ Histological preparations were performed, including fixing the rat ovary in 10% buffer formalin; dehydrating using a series of alcohol, that is, 70%, 80%, 90%, and 96% (absolute); and clearing of the rat ovary in xylene solution. The tissues were infiltrated with liquid paraffin, which is an embedding agent. Sectioning was performed with a microtome that could be set with a distance of 4–6 μ m, and the sections were placed on a slide. The embedding process must be reversed to get the paraffin wax out of the tissue and allow water-soluble dyes to penetrate the sections. Therefore, before

Table 1. Semiquantitative IHC scale taking into account both percentage of positive cells (A) and intensity of reaction color (B) with the final score representing the product of the two variables (A × B).³³

A	B
0 points no cells with positive reaction	0 points no color reaction
1 point to 10% cells with positive reaction	1 point low intensity of color reaction
2 points 11%–50% cells with positive reaction	2 points moderate intensity of color reaction
3 points 51%–80% cells with positive reaction	3 points intense color reaction
4 points >80% cells with positive reaction	

any staining can be performed, the slides are “deparaffinized” by running them through xylenes to alcohols to water. Routine H&E staining was used. The stained section was subsequently mounted with Canada balsam, and a coverslip was placed. Analyses and identifications of follicle De Graaf and ovarian regenerations are based on the histological measures of the normal tissue.⁵

Statistical analysis

The MDA concentration and SOD activity, TNF- α and IL-13 expressions, and growing follicle count were statistically analyzed using SPSS 15 (SCR_016479) for Windows XP with the level of significance set at 0.05 ($p=0.05$) and the confidence level at 99% ($\alpha=0.01$). Steps of comparative hypothesis tests are as follows: test data normality with the Kolmogorov–Smirnov test, homogeneity of variance test, analysis of variance factorial, and *post hoc* test (least significant difference test) using the Tukey HSD 5%.

Results

The effectiveness of forest honey (*A. dorsata*) as a therapy for ovarian failure that caused malnutrition was based on the following: increased antioxidant enzyme activity, such as SOD, and decreased oxidative stress concentration, such as MDA; increased anti-inflammatory cytokine expression, such as IL-13, and decreased pro-inflammatory cytokine expression, such as TNF- α ; and ovarian tissue regeneration with increased growing follicle count.

The antioxidant activity was analyzed using the ELISA double-antibody sandwich method and was based on increased SOD and decreased MDA concentration as oxidative stress. The SOD analysis showed a significant difference ($p<0.05$) in T1 (65.24 ± 7.53), T2 (74.16 ± 12.3), and T- (65.09 ± 6.56) compared with T+ (41.76 ± 8.51) (Table 2). The MDA analysis showed a significant difference ($p<0.05$) in T1 (9.71 ± 1.53), T2 (9.23 ± 0.96), and T- (9.83 ± 1.46) compared with T+ (15.28 ± 1.61) (Table 2).

The anti-inflammatory expression was analyzed using the IHC method and was based on increased IL-13 cytokine expression and decreased TNF- α pro-inflammatory cytokine expression. The IL-3 analysis showed a significant difference ($p<0.05$) in T1 (5.30 ± 2.31), T2 (9.80 ± 2.53), and T- (0.30 ± 0.48) compared with T+ (2.70 ± 1.57) (Table 2,

Table 2. The average of MDA concentration, SOD activity, TNF- α and IL-13 score expression, and growing follicle count in the ovarian rat tissue.

Treatments	Average \pm SD				
	Average MDA concentration (nmol/L)	Average SOD activity (%)	Average score TNF- α expression	Average score IL-13 expression	Average growing follicle count
Fertile female negative control group (T-)	$9.83^a\pm 1.46$	$65.09^b\pm 6.56$	$0.30^a\pm 0.48$	$0.30^a\pm 0.48$	$8.6^c\pm 0.69$
Infertile female positive control group (T+)	$15.28^b\pm 1.61$	$41.76^a\pm 8.51$	$9.50^c\pm 1.78$	$2.70^b\pm 1.57$	$0.3^a\pm 0.67$
Infertile female with 30% honey v/v group (T1)	$9.71^a\pm 1.53$	$65.24^b\pm 7.53$	$4.40^b\pm 3.02$	$5.30^c\pm 2.31$	$0.7^a\pm 0.95$
Infertile female with 50% honey v/v group (T2)	$9.23^a\pm 0.96$	$74.16^b\pm 12.3$	$2.50^{ab}\pm 1.65$	$9.80^d\pm 2.53$	$5.10^b\pm 0.99$

^{a-d}Different superscripts in the same column are significantly different ($p < 0.005$).

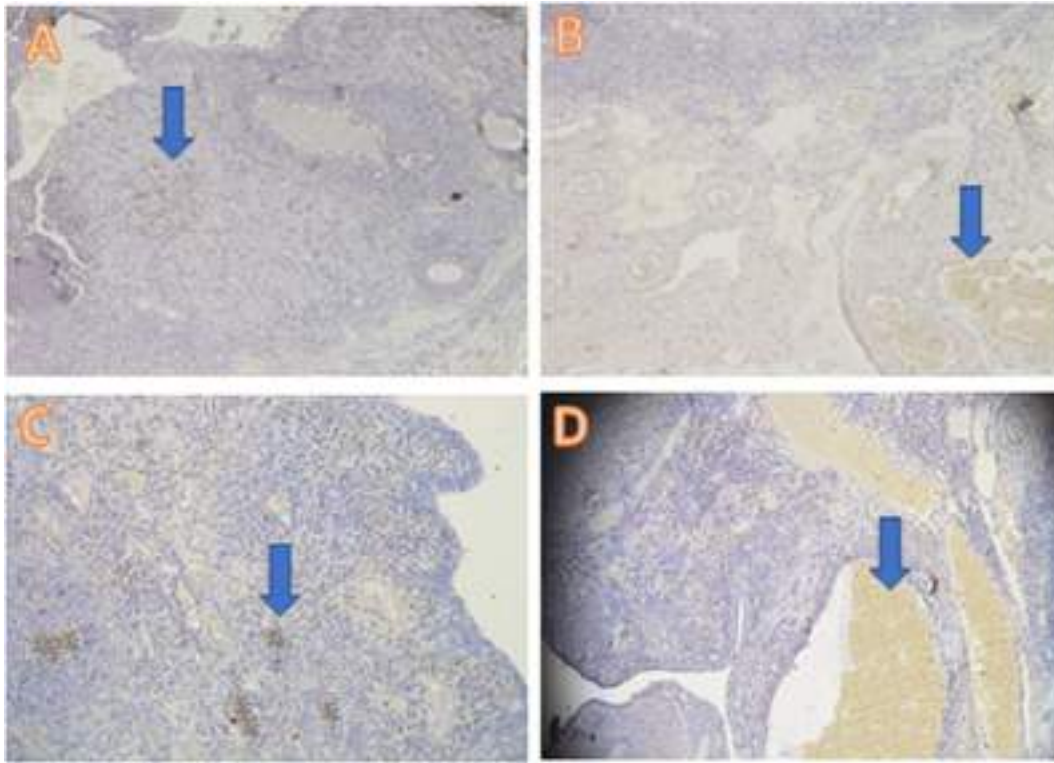


Figure 1. Average score of IL-13 expression (brown): (A) fertile female, negative control group (T⁻) = $0.30^a \pm 0.48$; (B) infertile female, positive control group (T⁺) = $2.70^b \pm 1.57$; (C) infertile female with 30% honey v/v group (T1) = $5.30^c \pm 2.31$; (D) infertile female with 50% honey v/v group (T2) = $9.80^d \pm 2.53$. (A–D) 400 \times with the IHC method. IHC = immunohistochemical.

Figure 1). The TNF- α analysis showed a significant difference ($p < 0.05$) in T1 (4.40 ± 3.02), T2 (2.50 ± 1.65), and T⁻ (0.30 ± 0.48) compared with T⁺ (9.50 ± 1.78) (Table 2, Figure 2).

Ovarian tissue regeneration was analyzed using the H&E method and was based on the increased growing follicle count. The growing follicle count analysis showed a significant difference ($p < 0.05$) in T⁻ (8.6 ± 0.69) and T2 (5.10 ± 0.99) compared with T1 (0.7 ± 0.95) and T⁺ (0.3 ± 0.67) (Table 2, Figure 3).

Discussion

The increased antioxidant activity and decreased oxidative stress were analyzed using the ELISA double-antibody sandwich method. The increased anti-inflammatory and decreased pro-inflammatory expressions were analyzed using the IHC method, and ovarian tissue regeneration was analyzed using the H&E staining method.

The increased antioxidant activity, such as SOD in T2, can reduce oxidative stress, which allows the MDA concentration to decrease (Table 2). SOD is a type of essential enzyme that functions as a scavenger against oxidative stress that occurs in the body. Various factors can affect the level and activity of antioxidants in dealing with oxidative stress. Physiological conditions, as well as environmental and genetic conditions, can affect the composition and amount of antioxidants.³⁴ Some researchers say that administering food supplements can also increase the amount of antioxidants in the body. The antioxidants derived from exogenous sources, such as those from food, also have an important role in increasing the endogenous antioxidant activity and neutralizing oxidative stress.³⁵

Decreased antioxidant activity is a sign of oxidative stress conditions. These results are in agreement with the results of another study, which states that nutritional deficiencies can affect the defense system of several scavenger enzymes, such as SOD, glutathione peroxidase, and catalase, in the form of a decreased activity in overcoming oxidative stress.³⁶ Similar results were also found, which stated that antioxidant levels can be significantly decreased ($p < 0.05$) under certain conditions, such as malnutrition.³⁷

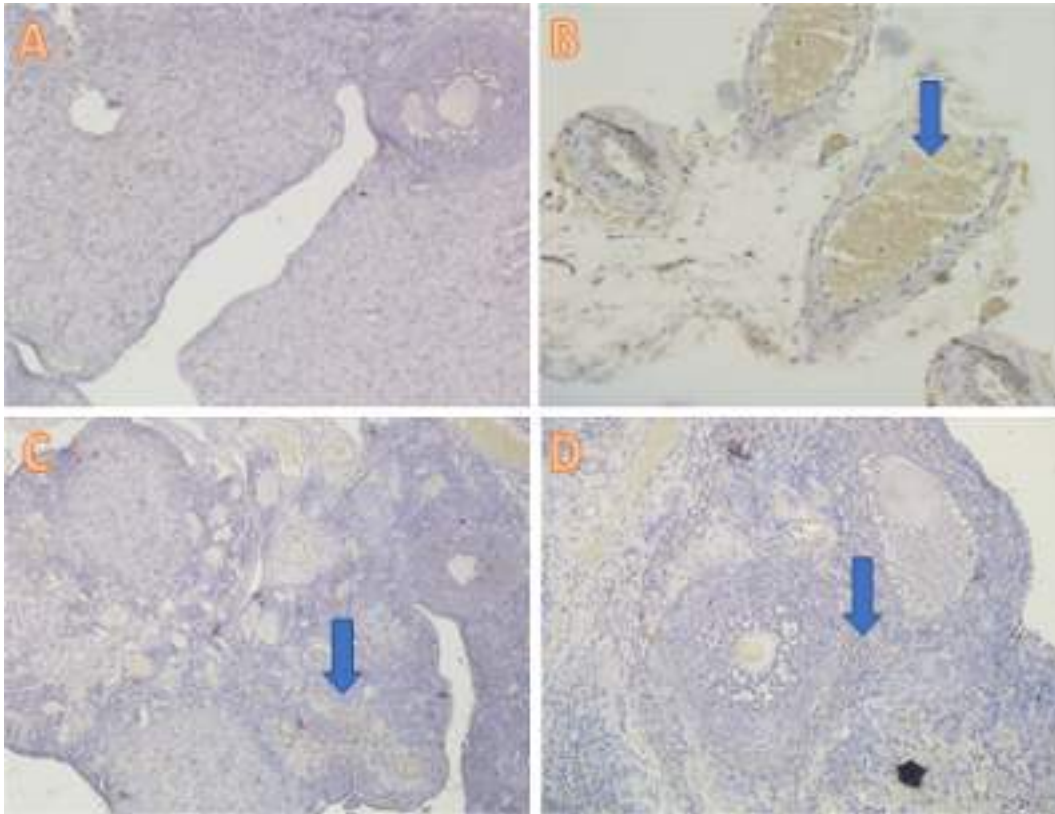


Figure 2. Average score of TNF- α expression (brown): (A) fertile female, negative control group (T $^-$) = $0.30^a \pm 0.48$; (B) infertile female, positive control group (T $^+$) = $9.50^c \pm 1.78$; (C) infertile female with 30% honey v/v group (T1) = $4.40^b \pm 3.02$; (D) infertile female with 50% honey v/v group (T2) = $2.50^{ab} \pm 1.65$. (A-D) 400 \times with the IHC method. IHC = immunohistochemical.

Based on the results of this study (Table 2), significant differences were observed in the T $^+$ group test compared with T1 and T2. The group of infertile rats without forest honey (T $^+$) had a lower activity value and was significantly different ($p < 0.05$) than the group of infertile rats treated with forest honey (T1 and T2). The significantly higher SOD activity values in the T1 and T2 groups indicated that forest honey therapy could increase the SOD activity in infertile female white rats due to malnutrition. The results of this study are consistent with those of another study conducted in 2003, wherein the results can prove that the application of natural ingredients of honey can increase the antioxidant activity in the recipient's blood plasma.³⁸

MDA is a marker of oxidative stress. An increase in MDA indicates an increase in oxidative stress. Malnutrition is one of the causes of oxidative stress. The results of this study are consistent with those of other studies, which state that a lack of nutritional intake can be the cause of oxidative stress,⁷ which ultimately leads to an increase in MDA concentrations.³⁹

Based on the statistical analysis of the results of this study (Table 2), a significant difference was noted in the MDA concentration ($p < 0.05$) in T $^+$ compared with T1 and T2. The group of infertile rats without forest honey (T $^+$) had a higher and significantly different MDA concentration than the group of infertile female rats treated with forest honey (T1 and T2), indicating a decrease in oxidative stress conditions in rats administered with forest honey. The results of this study are supported by the results of other studies, stating that honey has an antioxidant property, through a significant decrease in the MDA concentration compared with controls without honey.^{40,41}

Furthermore, regarding the immune response based on the anti-inflammatory cytokine IL-13 expression, the highest IL-13 expression was found in the T2 treatment group (infertile rats administered with forest honey with a 50% concentration) and the lowest expression was found in the T $^+$ and T $^-$ groups. IL-13 is an anti-inflammatory cytokine produced by innate or adaptive immune cells.⁴² The IL-13 expression that appears indicates that the addition of honey in malnourished rats can reduce the occurrence of inflammatory conditions in the ovarian tissue of experimental white rats.

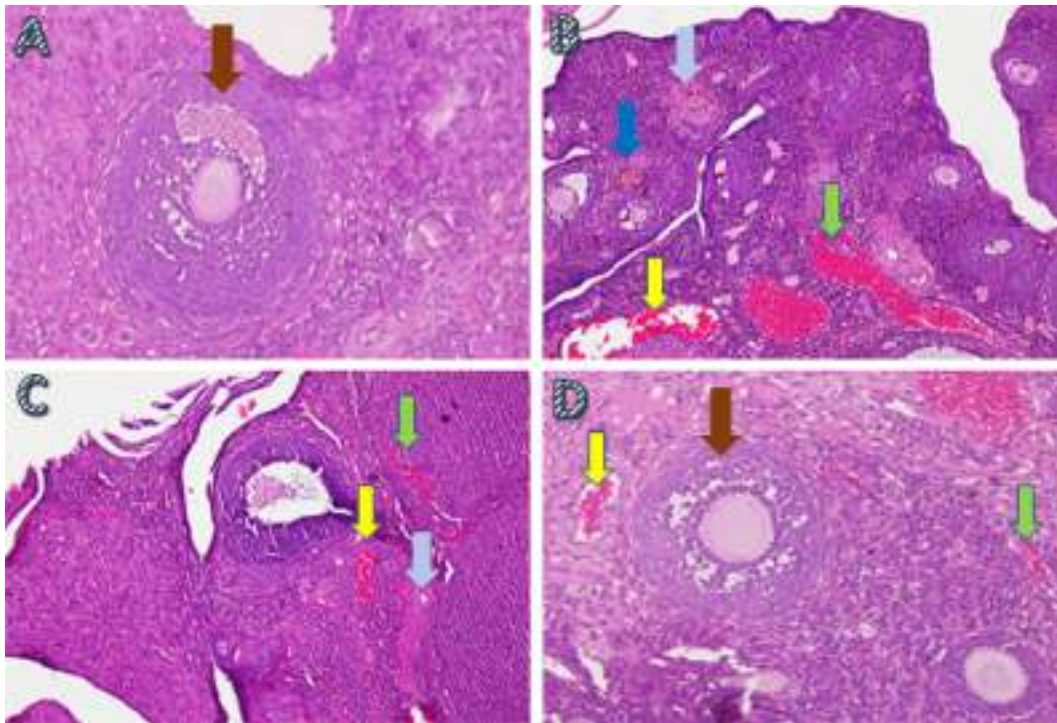


Figure 3. The ovarian tissue regeneration through the method of histopathology anatomy with hematoxylin and eosin (H&E) staining in ovarian rat tissue in a few treatments. A. Fertile female, negative control group (T⁻): shows growing follicle (↓); B. Infertile female, positive control group (T⁺): congestion of the ovary (↓) and widely hemorrhagic (↓), also visible hemosiderin (↓) due to blood cell hemolysis (brownish-yellow color) with fibrin deposition (↓), indicating that chronic congestive has occurred; C. Infertile female with 30% honey v/v group (T1): ovary does not regenerate, congestion appears along the hemosiderin expression and remains widely hemorrhagic; D. Infertile female with 50% honey v/v group (T2): ovaries begin to regenerate, making it appear intact; hemorrhage and congestion still appears in some areas with growing follicles.

This is supported by a study conducted in 2016, which states that the administration of honey to malnourished female rats regenerates ovarian tissues.⁵

Another study in 2016 stated that rats that were not fed for 5 days would experience damage to various organs, including reproductive organs.¹⁰ ROS is strongly suspected to be one of the factors that cause organ damage due to malnutrition. Not being fed for a long time and in a row experienced by white rats as experimental animals in this study can cause an imbalance between the ROS produced and the defense or the presence of antioxidants in the body. This imbalance can ultimately lead to oxidative stress that results in the occurrence of lipid peroxidation in cell membranes, which in turn leads to cell membrane and lipoprotein damage.⁴³

Damage to the cell membrane triggers the release of cellular components that will eventually cause cell death. The emergence of an active immune response occurs as a result of cellular damage. Immune system activation rapidly elicits an acute inflammatory response, which begins with the secretion of various cytokines and chemokines to recruit immune cells to the site of the defect.⁴⁴

The inflammatory process occurs in response to injury or damage to organs.⁴⁵ IL-13 is a cytokine that plays a significant role in the anti-inflammatory response.¹⁵ In this study, the IL-13 expression appeared in the T1 and T2 treatment groups, wherein the rats received honey therapy. In the negative control group (T⁻), wherein the condition of the rats was healthy, it could be inferred that IL-13 was not expressed (Table 2), which was due to the absence of injury in healthy rats. However, in the positive group (T⁺), wherein the rats were injured and without forest honey, the IL-13 expression was also low.

Forest honey has the highest antioxidant content than other types of honey; therefore, it has an optimal effect on wound healing and inflammation.⁴⁶ Phenolic compounds are contained in honey and are factors that have a major influence on

antioxidant and anti-inflammatory activities.¹⁷ IL-13 exerts its anti-inflammatory function through the deactivation of monocytes and macrophages and plays a major role in reducing the pro-inflammatory cytokine production.⁴⁷ Moreover, IL-13 inhibits potentially damaging inflammatory responses and plays a role in blocking antigen presentation by dendritic cells as well as blocking the activation and infiltration of macrophages to the site of the defect.⁴⁸

In this study, the increased IL-13 expression proves that forest honey acts as an anti-inflammatory agent. Another anti-inflammatory activity of honey is the decrease in the production of pro-inflammatory cytokines or inflammatory transcription factors, such as NF- κ B and MAPK.⁴⁹ The increased IL-13 expression indicates that the body's response, through the addition of forest honey, toward tissue damage can be improved. The increase in IL-13 expression in the T1 and T2 forest honey therapy groups showed that the inhibitory reaction to inflammation that occurred was also influenced by the presence of honey therapy.

The next observation is the effectiveness of honey therapy based on a decrease in pro-inflammatory cytokines. Based on the results of this study, the lowest TNF- α expression was in the T2 group, which received the highest forest honey therapy (50% v/v), whereas the highest TNF- α expression was found in the infertile rat group without honey (T+). This indicates that the greatest inflammatory reaction occurred in the malnourished condition in the positive control group (T+) rats. TNF- α is an inflammatory cytokine produced by macrophages or monocytes during acute inflammatory events. TNF- α further contributes to a wide range of cell signaling, causing cell death, such as necrosis or apoptosis.⁵⁰ TNF- α is mainly secreted by macrophages to stimulate the induction of systemic inflammation.⁵¹

Prolonged starvation conditions that cause malnutrition in rats cause damage to various organs, including the ovaries, due to an imbalance between ROS production and the rat body's antioxidant defenses. In a study conducted in 2016, it was stated that there was severe damage to cells from the ovarian tissue of rats that were not fed for five consecutive days.¹⁰ Excessive amounts of ROS in cells can cause damage to cell components, including cell membranes, lipids, proteins, nucleic acids, and other organelles.⁵² ROS at high concentrations is damaging to cells because ROS can oxidize proteins and lipid cellular components and injure DNA in the cell nucleus.⁴⁴ The body responds to damage or defects in tissues with the appearance of an inflammatory reaction.⁴⁵ Inflammation itself is an important part of innate immunity and is regulated by several mechanisms, one of which is through the cytokine mechanism. One of the cytokines that play an important role in the inflammatory response is TNF- α . TNF- α is a pro-inflammatory cytokine that is rapidly released during trauma or infection and is an early mediator in inflamed tissues.⁵³ Inflammation has the aim of eliminating irritant agents and accelerating tissue regeneration. TNF- α signals through two membrane receptors, namely TNFR1 and TNFR2.⁵⁴ Signaling via TNFR1 and TNFR2 that activates NF- κ B and MAPK induces inflammation, tissue regeneration, cell survival, and proliferation, and regulates immune defense against pathogens.⁵⁵ TNF- α increases the synthesis of anti-inflammatory factors, such as IL-13, corticosteroids, or prostanoids, which can regulate TNF- α expression.⁵⁴ That if anti-inflammatory factors cannot balance TNF- α , excessive inflammation occurs. In this study, the decrease in TNF- α expression observed in rats administered with forest honey, both at concentrations of 30% v/v and 50% v/v showed that the decrease in inflammatory reactions that occurred was also influenced by forest honey therapy.

In this study, ovarian tissue regeneration, which is shown as an intact ovarian tissue with growing follicles, is the third determinant of the effectiveness of forest honey administration. Ovarian regeneration can be observed microscopically using H&E staining.^{56,57} Microscopic examination showed that 50% v/v forest honey therapy (T2), which leads to ovarian tissue repair. Improvements are identified based on the regeneration of the ovary with growing follicles. Overview of these improvements can be compared with the negative control group (T-), which did not suffer from ovarian failure and remained in normal condition with growing follicles (Figure 3). The abnormal feature of the damaged ovary can be compared with the positive control group of rats (T+) with ovarian failure (degenerative). The microscopic examination showed congested, and severe hemosiderosis (yellow-brown color) was observed owing to the hemolysis of red blood cells with fibrin deposition and then hemorrhage, indicating that chronic congestion has occurred (Figure 3).

Conclusions

Therapy of 50% v/v forest honey for ten consecutive days in female rats with ovarian failure reveals the following findings: increased antioxidant enzyme activity, such as SOD, and decreased oxidative stress concentration, such as MDA; increased anti-inflammatory cytokine expression, such as IL-13, and decreased pro-inflammatory cytokine expression, such as TNF- α ; and ovarian tissue regeneration with increased growing follicle count.

Data availability

Underlying data

Figshare: Raw data of growing follicle, MDA concentration, TNF- α , IL-13 and SOD activity.

<https://doi.org/10.6084/m9.figshare.19173857.v3>.⁵⁸

This project contains the following underlying data:

- anova_growing follicle.xlsx
- anova_MDA concentration.xlsx
- anova_TNF-alfa.xlsx
- anova_IL-13 expression.xlsx
- anova_SOD Activity.xlsx

Figshare: Immunohistochemical reaction figures on TNF-alpha.

<https://doi.org/10.6084/m9.figshare.19397636.v2>.⁵⁹

This project contains the following underlying data:

- Fig. 1 TNF A.jpeg
- Fig. 2 TNF A.jpeg
- Fig. 3 TNF A.jpeg
- Fig. 4 TNF A.jpeg

Figshare: Histopathological figure: Ovary.

<https://doi.org/10.6084/m9.figshare.19397630.v2>.⁶⁰

This project contains the following underlying data:

- Fig. 1 HE.jpeg
- Fig. 2 HE.jpeg
- Fig. 3 HE.jpeg
- Fig. 4 HE.jpeg

Reporting guidelines

Figshare: ARRIVE checklist for 'Effectiveness of forest honey (*Apis dorsata*) as therapy for ovarian failure that caused malnutrition', <https://doi.org/10.6084/m9.figshare.19642266.v1>.⁶¹

Data are available under the terms of the Creative Commons Attribution 4.0 International license (CC-BY 4.0).

Acknowledgments

The authors acknowledge the chairman and staff of LIPJHKI, who assisted in the grammar check and Prof. Dr. R. Heru Prasetyo, dr., MS., SpParK, for his support.

References

1. UNICEF: **Celebrating World Food Day with innovation to combat child malnutrition**. 2020. [February 1 2022].
[Reference Source](#)
2. Zhang Y, Huang X, Yang Y, et al.: **Double burden of malnutrition among children under 5 in poor areas of China**. *PLoS One*. 2018; **13**(9): e0204142.
[PubMed Abstract](#) | [Publisher Full Text](#)
3. WHO: **Children: Improving survival and well-being**. 2020. [February 1 2022].
[Reference Source](#)
4. Prasetyo RH: **Changes in the Expression of CD4, IgA, PGE2, and Hsp70 Intestinal Mucosa *Mus musculus* Balb/c Protein Energy Malnutrition Infected by Cryptosporidium**. Dissertation. University of Airlangga. Indonesian. 2010; 37–45.
5. Prasetyo RH, Safitri E: **Effects of honey to mobilize endogenous stem cells in efforts intestinal and ovarian tissue regeneration in rats with protein energy malnutrition**. *Asian Pac. J. Reprod.* 2016; **5**(3): 198–203.
[Publisher Full Text](#)
6. Prasetyo RH, Hestianah EP: **Honey can repair damage of liver tissue due to protein energy malnutrition through induction of endogenous stem cells**. *Vet. World*. 2017; **10**(6): 711–715.
[PubMed Abstract](#) | [Publisher Full Text](#)
7. Rahma N, Wurlina W, Madyawati SP, et al.: **Kaliandra honey improves testosterone levels, diameter and epithelial thickness of seminiferous tubule of white rat (*Rattus norvegicus*) due to malnutrition through stimulation of HSP70**. *Open Vet. J.* 2021; **11**(3): 401–406.
[PubMed Abstract](#) | [Publisher Full Text](#)
8. Lisyorini L, Mustofa I, Hernawati T, et al.: **Potential of honey on regeneration of rat (*Rattus norvegicus*) testicular tissue due to nutrient deficiency through expression of vascular endothelial growth factor (VEGF)**. *Int. J. Pharmacol. Res.* 2021; **13**(2): 1893–1897.
9. Safitri E, Purnobasuki H: **Effectiveness of mesenchymal stem cells cultured under hypoxia to increase the fertility rate in rats (*Rattus norvegicus*)**. *Vet. World*. 2021; **14**(11): 3056–3064.
[PubMed Abstract](#) | [Publisher Full Text](#)
10. Safitri E, Widiyatno TV, Prasetyo RH: **Honeybee product therapeutic as stem cells homing for ovary failure**. *Vet. World*. 2016; **9**(11): 1324–1330.
[PubMed Abstract](#) | [Publisher Full Text](#)
11. Schieber M, Chandel NS: **ROS function in redox signaling and oxidative stress**. *Curr. Biol.* 2014; **24**(10): R453–R462.
[PubMed Abstract](#) | [Publisher Full Text](#)
12. Dzoyem JP, Kuete V, Eloff JN: **Biochemical parameters in toxicological studies in Africa: Significance, principle of methods, data interpretation, and use in plant screenings**. *Toxicol. Afr. Plants*. 2014; 659–715.
[Publisher Full Text](#)
13. Zhao H, Zhang R, Yan X, et al.: **Superoxide dismutase nanozymes: An emerging star for anti-oxidation**. *J. Mater. Chem. B*. 2021; **9**(35): 6939–6957.
[PubMed Abstract](#) | [Publisher Full Text](#)
14. Liu T, Zhang L, Joo D, et al.: **NF- κ B signaling in inflammation**. *Signal Transduct. Target. Ther.* 2017; **2**(2): 1–9.
15. Hutchins AP, Diez D, Miranda-Saavedra D: **The IL-10/STAT3-mediated anti-inflammatory response: recent developments and future challenges**. *Brief. Funct. Genomics*. 2013; **12**(6): 489–498.
[PubMed Abstract](#) | [Publisher Full Text](#)
16. Safitri E, Utama S, Widiyatno TV, et al.: **Autoregeneration of mice testicle seminiferous tubules due to malnutrition based on stem cells mobilization using bee honey**. *Asian Pac. J. Reprod.* 2016; **5**(1): 31–35. 4.
[Publisher Full Text](#)
17. Samarghandian S, Farkhondehad T, Samini F: **Honey and health: A review of recent clinical research**. *Pharmacog. Res.* 2017; **9**(2): 121–127.
18. Albaridi NA: **Antibacterial potency of honey**. *Int. J. Microbiol.* 2019; **2019**: 1–10.
[Publisher Full Text](#)
19. Alvarez-Suarez JM, Gasparrini M, Forbes-Hernández TY, et al.: **The composition and biological activity of honey: A focus on manuka honey**. *Foods*. 2014; **3**: 420–432.
[PubMed Abstract](#) | [Publisher Full Text](#)
20. Moniruzzaman M, Khalil MI, Sulaiman SA, et al.: **Physicochemical and antioxidant properties of Malaysian honeys produced by *Apis cerana*, *Apis dorsata* and *Apis mellifera***. *BMC Complement. Altern. Med.* 2013; **13**: 43.
[PubMed Abstract](#) | [Publisher Full Text](#)
21. Hozzein W: **Bee venom accelerates diabetic wound healing by suppressing the activating transcription factor-3 and inducible nitric oxid synthase-mediated oxidative stress and by recruiting bone marrow-derived endothelial progenitor cells in diabetic mice**. *Proceeding 13th Asian Apic. Assoc. Conference. Jeddah, Kingdom of Saudi Arabia*. April. 2016; **23**: 134–135
22. Nabuni M, Azimi E, Shiravi A, et al.: **Honey bee venom will differentiate mesenchymal stem cells in to the osteocyte**. *International Conference on Applied Life Sciences, (ICALS 2012)*. Turkey. September. 2012; **10**(12): 247–250.
23. Najm F, Madhavan M, Zaremba A, et al.: **Drug-based modulation of endogenous stem cells promotes functional remyelination in vivo**. *Nature*. 2015; **522**(7555): 216–220.
[PubMed Abstract](#) | [Publisher Full Text](#)
24. Caplan AI: **Adult mesenchymal stemcells for tissue engineering versus regenerative medicine. Mini review**. *J. Cell. Physiol.* 2007; **213**(2): 341–347.
[Publisher Full Text](#)
25. Wendy WP, Priceb EA, Sahooa D, et al.: **Human bone marrow hematopoietic stem cells are increased in frequency and myeloid-biased with age**. *PNAS*. 2011; **108**(50): 20012–20017.
[Publisher Full Text](#)
26. Santoro NF, Cooper AR: *Primary Ovarian Insufficiency - Clinical Guide to Early Menopause*. e-Book. 1st ed. Switzerland: Springer; 2016. 82–83.
27. Rantam FA, Ferdiansyah M, Purwati A: *Stem Cell Mesenchymal, Hematopoetik dan Model Aplikasi*. 2nd ed. Surabaya: Airlangga University Press; 2014; vol. 45-50: 145–155.
28. Oryan A, Alemzadeh E, Moshiri A: **Biological properties and therapeutic activities of honey in wound healing: A narrative review and meta-analysis**. *J. Tissue Viability*. 2016; **25**(2): 98–118.
[PubMed Abstract](#) | [Publisher Full Text](#)
29. MyBioSource: **MDA ELISA kit | Rat malondialdehyde (MDA) ELISA Kit**. 2021. [February 1 2022].
[Reference Source](#)
30. MyBioSource: **SOD ELISA kit | Rat super oxide dismutases (SOD) ELISA kit-ABA82128.1**. 2021. [February 1 2022].
[Reference Source](#)
31. Palermo R: **Differential actions of FSH and LH during folliculogenesis**. *Reprod. Biomed. Online*. 2007; **15**(3): 326–337.
[PubMed Abstract](#) | [Publisher Full Text](#)
32. Crosby K, Simendinger J, Grange C, et al.: **Immunohistochemistry protocol for paraffin-embedded tissue section-advertisement**. *Cell Signal. Technol.* 2016.
33. Nowak M, Madej J, Dziegiel P: **Intensity of COX2 expression in cells of soft tissue fibrosarcomas in dogs as related to grade of tumour malignancy**. *Bull. Vet. Inst. Pulawy*. 2007; **51**(2): 275–279.
34. Li H, Tsao R, Deng Z: **Factors affecting the antioxidant potential and health benefits of plant foods**. *Can. J. Plant Sci.* 2012; **92**(6): 1101–1111.
[Publisher Full Text](#)
35. Pham-Huy LA, He H, Pham-Huy C: **Free radicals, antioxidants in disease and health**. *Int. J. Biomed. Sci.* 2008; **4**(2): 89–96.
36. Gavia-García G, González-Martínez H, Miliar-García A, et al.: **Oxidative damage and antioxidant defense in thymus of malnourished lactating rats**. *Nutrition*. 2015; **31**(11-12): 1408–1415.
[PubMed Abstract](#) | [Publisher Full Text](#)
37. Khare M, Mohanty C, Das BK, et al.: **Free radicals and antioxidant status in protein energy malnutrition**. *Int. J. Pediatr.* 2014; **1**(1): 1–7.
38. Schramm DD, Karim M, Schrader HR, et al.: **Honey with high levels of antioxidants can provide protection to healthy human subjects**. *J. Agric. Food Chem.* 2003; **51**(6): 1732–1735.
[Publisher Full Text](#)
39. Cahyani D, Puryatni A, Permatasari N: **Cysteine, malondialdehyde (MDA) and glutathione (GSH) levels in marasmic type malnutrition**. *J. Trop. Life Sci.* 2017; **7**(2): 151–157.
[Publisher Full Text](#)
40. Hilary S, Habib H, Souka U, et al.: **Bioactivity of arid region honey: An in vitro study**. *BMC Complement. Altern. Med.* 2017; **17**(1): 177.
[PubMed Abstract](#) | [Publisher Full Text](#)
41. Fajrilah BR, Indrayani UD, Djamaan Q: **The effect of honey on plasma malondialdehyde (MDA) level on alloxan-induced hyperglycemic rats an experimental studies in rats Galur Wistar white males**. *Sains. Medika*. 2013; **5**(2): 98–100.
42. Mollazadeh H, Cicero AFG, Blesso CN, et al.: **Immune modulation by curcumin: The role of interleukin-10**. *Crit. Rev. Food Sci. Nutr.* 2017; **59**(1): 89–101.

43. Pizzino G, Irrera N, Cucinotta M, *et al.*: **Oxidative stress: Harms and benefits for human health.** *Oxidative Med. Cell. Longev.* 2017; **2017**: 1–13.
[Publisher Full Text](#)
44. Mittal M, Siddiqui MR, Tran K, *et al.*: **Reactive oxygen species in inflammation and tissue injury.** *Antioxid. Redox Signal.* 2014; **20**(7): 1126–1167.
[PubMed Abstract](#) | [Publisher Full Text](#)
45. Azenabor A, Ekun AO, Akinloye O: **Impact of inflammation on male reproductive tract.** *J. Reprod. Infertil.* 2015; **16**(3): 123–129.
[PubMed Abstract](#)
46. Ahmed SI, Elsheikh AS, Attia GA, *et al.*: **Prenatal progesterone exposure of male rats induces morphometric and histological changes in testes.** *Asian Pac. J. Reprod.* 2016; **4**(1): 1–7.
47. King A, Balaji S, Le LD, *et al.*: **Regenerative wound healing: The role of interleukin-10.** *Adv. Wound Care (New Rochelle).* 2014; **3**(4): 315–323.
[PubMed Abstract](#) | [Publisher Full Text](#)
48. Steen EH, Wang X, Balaji S, *et al.*: **the role of anti-inflammatory cytokine interleukin-10 in tissue fibrosis.** *Adv. Wound Care (New Rochelle).* 2020; **9**(4): 184–198.
[PubMed Abstract](#) | [Publisher Full Text](#)
49. Ranneh Y, Akim AM, Hamid HA, *et al.*: **Honey and its nutritional and anti-inflammatory value.** *BMC Complement. Med. Ther.* 2021; **21**(1): 30.
[PubMed Abstract](#) | [Publisher Full Text](#)
50. Idriss HT, Naismith JH: **TNF alpha and TNF receptor superfamily: Structure-function relationship.** *Microsc. Res. Tech.* 2000; **50**(3): 184–195.
[PubMed Abstract](#) | [Publisher Full Text](#)
51. Kale VP, Gilhooley PJ, Phadtare S, *et al.*: **Role of gambogic acid in chemosensitization of cancer. in: cancer sensitizing agent for chemotherapy.** *Role of Nutraceuticals in Cancer Chemocitization.* 2nd ed. Academic Press; 2018; 151–167
52. Redza-Dutordoir M, Averill-Bates DA: **activation of apoptosis signalling pathways by reactive oxygen species.** *Biochim. Biophys. Acta.* 2016; **1863**(12): 2977–2992.
[Publisher Full Text](#)
53. Parameswaran N, Patial S: **Tumor Necrosis Factor- α Signalling in Macrophag.** *Crit. Rev. Eukaryot. Gene Expr.* 2010; **20**(2): 87–103.
[PubMed Abstract](#) | [Publisher Full Text](#) | [Free Full Text](#)
54. Zelova H, Hosek J: **TNF- α in Signalling and Inflammation: Interaction Between Old Acquaintances.** *Inflamm. Res.* 2013; **62**(7): 641–651.
[PubMed Abstract](#) | [Publisher Full Text](#)
55. Kalliolias GD, Ivashkiv LB: **TNF biology, pathogenic mechanism and emerging therapeutic strategies.** *Nat. Rev. Rheumatol.* 2016; **12**(1): 49–62.
[Publisher Full Text](#)
56. Dong J, Albertini DF, Nishimori K, *et al.*: **Growth differentiation factor-9 is required during early ovarian folliculogenesis.** *Nature.* 1996; **383**(6600): 531–535.
[PubMed Abstract](#) | [Publisher Full Text](#)
57. Dan S, Haibo L, Hong L: **Review: Pathogenesis and stem cell therapy for premature ovarian failure.** *OA Stem Cells.* 2014; **2**(1): 1–8.
58. Safitri E, Purnobasuki H, Purnama MTE, *et al.*: **Raw data of growing follicle, MDA concentration, TNF- α , IL-13 and SOD activity.** *figshare. Dataset.* 2022.
[Publisher Full Text](#)
59. Safitri E, Purnobasuki H, Purnama MTE, *et al.*: **Immunohistochemical reaction figures on TNF- α .** *figshare. Figure.* 2022.
[Publisher Full Text](#)
60. Safitri E, Purnobasuki H, Purnama MTE, *et al.*: **Histopathological figure: Ovary.** *figshare. Figure.* 2022.
[Publisher Full Text](#)
61. Safitri E, Purnobasuki H, Purnama MTE, Chhetri S: **ARRIVE Checklist: Effectiveness of forest honey (Apis dorsata) as therapy for ovarian failure that caused malnutrition.** *figshare.* 2022. Online resource.
[Publisher Full Text](#)

Open Peer Review

Current Peer Review Status: ? ✓

Version 1

Reviewer Report 15 September 2022

<https://doi.org/10.5256/f1000research.122287.r143797>

© 2022 Aulanni'am A et al. This is an open access peer review report distributed under the terms of the [Creative Commons Attribution License](#), which permits unrestricted use, distribution, and reproduction in any medium, provided the original work is properly cited. The author(s) is/are employees of the US Government and therefore domestic copyright protection in USA does not apply to this work. The work may be protected under the copyright laws of other jurisdictions when used in those jurisdictions.



Aulanni'am Aulanni'am

Department of Biochemistry, Faculty of Mathematics and Natural Sciences, Universitas Brawijaya, Malang, Indonesia

Husnul Khotimah

Department of Pharmacology, Faculty of Medicine, Universitas Brawijaya, Malang, Indonesia

The Title: will be better if showed the object (Rat)

The dose of Honey, will be stronger for conclusion if you have 3 doses, so we will know the trends.

This is good research. however, I had some questions :

1. In this study you used IHC (immunohistochemistry) for measuring TNFa as an inflammatory mediator rather than ELISA because by ELISA we will know the level of TNFa directly.
2. This study also only used 2 doses of forest honey. because pharmacologically at least 3 doses are needed to know the trends and dose-response curve.
3. There is such a jumping discussion about tissue damage. I thought tissue damage was the end point of this research, and several variables (MDA, SOD, TNFa and IL-13) is an intermediate variables that explained the endpoint.

Overall, this is a good experiment with good results

Is the work clearly and accurately presented and does it cite the current literature?

Yes

Is the study design appropriate and is the work technically sound?

Yes

Are sufficient details of methods and analysis provided to allow replication by others?

Yes

If applicable, is the statistical analysis and its interpretation appropriate?

Yes

Are all the source data underlying the results available to ensure full reproducibility?

Yes

Are the conclusions drawn adequately supported by the results?

Yes

Competing Interests: No competing interests were disclosed.

Reviewer Expertise: Molecular Biochemistry: the molecular mechanism of carbohydrate, protein and lipid metabolism; molecular pharmacology: mechanism of drugs, herbal or natural resources; animal model: a design for some animal models such as diabetes, cancers, infertility, malnutrition

We confirm that we have read this submission and believe that we have an appropriate level of expertise to confirm that it is of an acceptable scientific standard.

Author Response 09 Oct 2022

Muhammad Thohawi Elziyad Purnama, Faculty of Veterinary Medicine, Universitas Airlangga, Surabaya, Indonesia

Dear Reviewer,

Thanks for your valuable comments and suggestions on the manuscript entitled:

Effectiveness of forest honey (*Apis dorsata*) as therapy for ovarian failure causing malnutrition

We welcome feedback. We have made modifications to the manuscript according the track comment.

Competing Interests: None

Reviewer Report 15 September 2022

<https://doi.org/10.5256/f1000research.122287.r149430>

© 2022 Layek U. This is an open access peer review report distributed under the terms of the [Creative Commons Attribution License](#), which permits unrestricted use, distribution, and reproduction in any medium, provided the original work is properly cited.



Ujjwal Layek 

Department of Botany, Rampurhat College, Rampurhat, West Bengal, India

The authors determine the effect of honey feeding on the fertility of rats. They measured superoxide dismutase (SOD) and malondialdehyde (MDA) levels and observed ovarian tissue regeneration in different treatments. I think the work has a significant impact on medical science. However, the manuscript needs to improve by focusing on the following:

Abstract

- Background: needs to focus on the effect of malnutrition on fertility.
- Results: SOD, MDA; I think full forms will be better for readers.

Introduction

- Inflammation due to malnutrition is needs to be illustrate.
- "monofloral" delete it.
- "medical purposes antioxidant properties".---- use more references.
- "Monofloral (derived ...) and polyfloral....)." --- The honey sample in which one pollen type is predominant (>45%) is called unifloral/monofloral. In contrast, absence of predominant pollen type within a honey sample is treated as multiflral/polyfloral.
 - Vonder Ohe et al. 2004. *Apidologie* 35: S18-S25. doi: 10.1051/apido:2004050
 - Layek and Karmakar 2018. *Grana* 57(4): 298-310. doi: 10.1080/00173134.2017.1390604
- *Apis dorsata* ----- add author citation Fabricius
- "Forest honey in Indonesia." --- why polyfloral? Monofloral and polyfloral depend on surrounding vegetation. Mention plants and add references.

Methods

- MDA and SOD
 - 100-uL---- correct

Figure ligands: need to be concise

Conclusion

- add text about the importance of the work

References

- several errors are there and do not maintain the journal's style

References

1. Von Der Ohe W, Persano Oddo L, Piana M, Morlot M, et al.: Harmonized methods of melissopalynology. *Apidologie*. 2004; **35** (Suppl. 1): S18-S25 [Publisher Full Text](#)
2. Layek U, Karmakar P: Pollen analysis of *Apis dorsata* Fabricius honeys in Bankura and Paschim Medinipur districts, West Bengal. *Grana*. 2018; **57** (4): 298-310 [Publisher Full Text](#)

Is the work clearly and accurately presented and does it cite the current literature?

Partly

Is the study design appropriate and is the work technically sound?

Partly

Are sufficient details of methods and analysis provided to allow replication by others?

Yes

If applicable, is the statistical analysis and its interpretation appropriate?

Yes

Are all the source data underlying the results available to ensure full reproducibility?

Yes

Are the conclusions drawn adequately supported by the results?

Yes

Competing Interests: No competing interests were disclosed.

Reviewer Expertise: Plant-pollinator interactions, Honeybee biology, stingless bee biology

I confirm that I have read this submission and believe that I have an appropriate level of expertise to confirm that it is of an acceptable scientific standard, however I have significant reservations, as outlined above.

Author Response 09 Oct 2022

Muhammad Thohawi Elziyad Purnama, Faculty of Veterinary Medicine, Universitas Airlangga, Surabaya, Indonesia

Dear Reviewer,

Thanks for your valuable comments and suggestions on the manuscript entitled:

Effectiveness of forest honey (*Apis dorsata*) as therapy for ovarian failure causing malnutrition

We welcome feedback. We have made modifications to the manuscript according to the following:

Abstract

Background: needs to focus on the effect of malnutrition on fertility.

Answer: We have revised with the focus research contribution.

Results: SOD, MDA; I think full forms will be better for readers.

Answer: We have revised with the full form of SOD and MDA.

Introduction

Inflammation due to malnutrition is needs to be illustrate.

Answer: We have revised.

"monofloral" delete it.

Answer: We have revised.

"medical purposes antioxidant properties".---- use more references.

Answer: We have added a reference.

"Monofloral (derived ...) and polyfloral....)." --- The honey sample in which one pollen type is predominant (>45%) is called unifloral/monofloral. In contrast, absence of predominant pollen type within a honey sample is treated as multiflral/polyfloral.

Vonder Ohe et al. 2004. Apidologie 35: S18-S25. doi: 10.1051/apido:2004050

Layek and Karmakar 2018. Grana 57(4): 298-310. doi: 10.1080/00173134.2017.1390604

Answer: We have added this two reference.

Apis dorsata ----- add author citation Fabricius

Answer: We have revised.

"Forest honey in Indonesia." --- why polyfloral? Monofloral and polyfloral depend on surrounding vegetation. Mention plants and add references.

Answer: We have revised.

Methods

MDA and SOD

100-uL---- correct

Answer: We have revised.

Figure ligands: need to be concise

Answer: We have revised.

Conclusion

add text about the importance of the work

Answer: We have added the brief conclusion regarding these finding.

References

several errors are there and do not maintain the journal's style

Answer: We have revised all references according to journal's style.

Competing Interests: None

The benefits of publishing with F1000Research:

- Your article is published within days, with no editorial bias
- You can publish traditional articles, null/negative results, case reports, data notes and more
- The peer review process is transparent and collaborative
- Your article is indexed in PubMed after passing peer review
- Dedicated customer support at every stage

For pre-submission enquiries, contact research@f1000.com

F1000Research