



International Journal of
*Environmental Research
and Public Health*

IMPACT
FACTOR
4.614

Indexed in:
PubMed

Nature, Tourism & Mental Health

Volume 19 • Issue 20 | October (II) 2022

Int. J. Environ. Res. Public Health, Volume 19, Issue 20 (October-2 2022) – 731 articles



Cover Story (view full-size image): Tourism in national parks and nature provides a mechanism to bring nature-based therapies into mainstream mental healthcare. This is of major economic importance in global recovery of mental health, which declined severely during the COVID-19 pandemic. Countries have adopted a variety of different approaches. Some, e.g., Australia, are focused on the design of activities; others, e.g., China, on provision of facilities. Research priorities include benefits of tour guides or psychologists, compared to self-guided nature experiences; comparisons between repeated brief visits and one-off nature holidays; relative effects of biodiversity, flagship species, and scenic or wilderness quality; and differences between individuals, depending on personalities, life histories, and mental health status and symptoms. [View this paper](#)

- Issues are regarded as officially published after their release is announced to the table of contents alert mailing list.
- You may sign up for e-mail alerts to receive table of contents of newly released issues.
- PDF is the official format for papers published in both, html and pdf forms. To view the papers in pdf format, click on the "PDF Full-text" link, and use the free [Adobe Reader](#) to open them.

Order results

Publication Date

Result details

Normal

Section

All Sections

Open Access Article



Dynamic Taping Improves Landing Biomechanics in Young Volleyball Athletes

by [Chih-Kuan Wu](#), [Yin-Chou Lin](#), [Chi-Ping Lai](#), [Hsin-Ping Wang](#) and [Tsung-Hsun Hsieh](#)
Int. J. Environ. Res. Public Health 2022, 19(20), 13716; <https://doi.org/10.3390/ijerph192013716> - 21 Oct 2022
Cited by 1 | Viewed by 994

Abstract Poor landing biomechanics such as hip adduction, internal rotation, and knee valgus have been recognized as modifiable risk factors of anterior cruciate ligament (ACL) injury. Dynamic taping is a newly developed technique with better elasticity and extensibility, which could change the landing biomechanics. [...] [Read more](#).
(This article belongs to the Special Issue Sports Medicine and Sports Science)

► [Show Figures](#)

Open Access Opinion



Contribution of Home Gardens to Sustainable Development: Perspectives from A Supported Opinion Essay

by [Mário Santos](#), [Helena Moreira](#), [João Alexandre Cabral](#), [Ronaldo Gabriel](#), [Andreia Teixeira](#),
[Rita Bastos](#) and [Alfredo Aires](#)
Int. J. Environ. Res. Public Health 2022, 19(20), 13715; <https://doi.org/10.3390/ijerph192013715> - 21 Oct 2022
Cited by 1 | Viewed by 898

Abstract Home gardening has a long history that started when humans became sedentary, being traditionally considered an accessible source of food and medicinal plants to treat common illnesses. With trends towards urbanization and industrialization, particularly in the post-World War II period, the importance of [...] [Read more](#).
(This article belongs to the Special Issue Environmental Sustainability of Agricultural Systems: Concepts, Practices and Drawbacks)

Open Access Article



Correlation between Lindane Use and the Incidence of Thyroid Cancer in the United States: An Ecological Study

by Mathilda Alsen, Vikram Vasani, Eric M. Genden, Catherine Sinclair and Maaïke van Gerwen

Int. J. Environ. Res. Public Health 2022, 19(20), 13158; <https://doi.org/10.3390/ijerph192013158> - 13 Oct 2022

Viewed by 574

Abstract The increasing rate of thyroid cancer may be attributable to endocrine disruptive chemicals. Lindane is a persistent organochlorine pesticide with endocrine disruptive properties that has been classified as carcinogenic to humans. The aim of this ecological study was to evaluate potential correlation between [...] [Read more.](#)

(This article belongs to the Topic Environmental Exposure, Biomonitoring and Exposure Assessment)

► [Show Figures](#)

Open Access Systematic Review



Economic Burden of SARS-CoV-2 Patients with Multi-Morbidity: A Systematic Review Protocol

by Amirah Azzeri, Mohd Noor Afiq Ramlee, Mohd Iqbal Mohd Noor, Mohd Hafiz Jaafar, Thinni Nurul Rochmah and Maznah Dahlui

Int. J. Environ. Res. Public Health 2022, 19(20), 13157; <https://doi.org/10.3390/ijerph192013157> - 13 Oct 2022

viewed by 168

Abstract Economic burden issues in SARS-CoV-2 patients with underlying co-morbidities are enormous resources for patient treatment and management. The uncertainty costs for clinical management render the healthcare system catatonic and incurs deficits in national annual budgets. This article focuses on systematic steps towards selecting [...] [Read more.](#)

(This article belongs to the Section Health Economics)

[Back to Top](#)

[Sign In / Sign Up \(/user/login\)](#)[Submit \(https://susy.mdpi.com/user/manuscripts/upload?journal=ijerph\)](https://susy.mdpi.com/user/manuscripts/upload?journal=ijerph)

Search for Articles:

Advanced Search

[Journals \(/about/journals\)](#) / [IJERPH \(/journal/ijerph\)](#) / [Editorial Board](#) /

International Journal of
**Environmental Research
and Public Health** [\(/journal/ijerph\)](#)

IMPACT
FACTOR
4.614



Indexed in: [PubMed \(https://www.ncbi.nlm.nih.gov/pubmed/?term=1660-4601\)](https://www.ncbi.nlm.nih.gov/pubmed/?term=1660-4601)

Submit to *IJERPH* (<https://susy.mdpi.com/journal/ijerph/stats>)/manuscripts/upload?form[journal_id]=6)

Review for *IJERPH* (<https://susy.mdpi.com/volunteer/journals/review>)

Journal Menu

► Journal Menu

- [IJERPH Home \(/journal/ijerph\)](#)
- [Aims & Scope \(/journal/ijerph/about\)](#)
- [Editorial Board \(/journal/ijerph/editors\)](#)
- [Reviewer Board \(/journal/ijerph/submission_reviewers\)](#)
- [Topical Advisory Panel \(/journal/ijerph/topical_advisory_panel\)](#)
- [Instructions for Authors \(/journal/ijerph/instructions\)](#)
- [Special Issues \(/journal/ijerph/special_issues\)](#)
- [Topics \(/topics?query=&journal=ijerph&status=all&category=all\)](#)
- [Sections & Collections \(/journal/ijerph/sections\)](#)
- [Article Processing Charge \(/journal/ijerph/apc\)](#)
- [Indexing & Archiving \(/journal/ijerph/indexing\)](#)
- [Editor's Choice Articles \(/journal/ijerph/editors_choice\)](#)
- [Most Cited & Viewed \(/journal/ijerph/most_cited\)](#)
- [Journal Statistics \(/journal/ijerph/stats\)](#)
- [Journal History \(/journal/ijerph/history\)](#)
- [Journal Awards \(/journal/ijerph/awards\)](#)
- [Society Collaborations \(/journal/ijerph/societies\)](#)
- [Conferences \(/journal/ijerph/events\)](#)
- [Editorial Office \(/journal/ijerph/editorial_office\)](#)

Journal Browser

► Journal Browser

- > [Forthcoming issue \(/1660-4601/20/2\)](#)
- > [Current issue \(/1660-4601/20/1\)](#)

[Vol. 20 \(2023\) \(/1660-4601/20\)](#)
[Vol. 19 \(2022\) \(/1660-4601/19\)](#)
[Vol. 18 \(2021\) \(/1660-4601/18\)](#)
[Vol. 17 \(2020\) \(/1660-4601/17\)](#)
[Vol. 16 \(2019\) \(/1660-4601/16\)](#)
[Vol. 15 \(2018\) \(/1660-4601/15\)](#)
[Vol. 14 \(2017\) \(/1660-4601/14\)](#)
[Vol. 13 \(2016\) \(/1660-4601/13\)](#)
[Vol. 12 \(2015\) \(/1660-4601/12\)](#)
[Vol. 11 \(2014\) \(/1660-4601/11\)](#)
[Vol. 10 \(2013\) \(/1660-4601/10\)](#)
[Vol. 9 \(2012\) \(/1660-4601/9\)](#)
[Vol. 8 \(2011\) \(/1660-4601/8\)](#)
[Vol. 7 \(2010\) \(/1660-4601/7\)](#)
[Vol. 6 \(2009\) \(/1660-4601/6\)](#)
[Vol. 5 \(2008\) \(/1660-4601/5\)](#)
[Vol. 4 \(2007\) \(/1660-4601/4\)](#)
[Vol. 3 \(2006\) \(/1660-4601/3\)](#)
[Vol. 2 \(2005\) \(/1660-4601/2\)](#)
[Vol. 1 \(2004\) \(/1660-4601/1\)](#)

Thanks
A Million
to our
66,000
editorial
board
members



1,000,000
articles
published!

Editorial Board

- [Health Economics Section \(/journal/ijerph/sectioneditors/health_eco\)](#)
- [Global Health Section \(/journal/ijerph/sectioneditors/public_health\)](#)
- [Environmental Health Section \(/journal/ijerph/sectioneditors/environment_health\)](#)



- [Environmental Science and Engineering Section \(/journal/ijerph/sectioneditors/environment_engineering\)](#)
- [Occupational Safety and Health Section \(/journal/ijerph/sectioneditors/occupational_health\)](#)
- [Health Behavior, Chronic Disease and Health Promotion Section \(/journal/ijerph/sectioneditors/health_promotion\)](#)
- [Climate Change Section \(/journal/ijerph/sectioneditors/Climate_Change\)](#)
- [Infectious Disease Epidemiology Section \(/journal/ijerph/sectioneditors/Infectious_Disease_Epidemiology\)](#)
- [Mental Health Section \(/journal/ijerph/sectioneditors/Mental_Health\)](#)
- [Digital Health Section \(/journal/ijerph/sectioneditors/Digital_Health\)](#)
- [Children's Health Section \(/journal/ijerph/sectioneditors/Children_Health\)](#)
- [Women's Health Section \(/journal/ijerph/sectioneditors/women_health\)](#)
- [Health Care Sciences & Services Section \(/journal/ijerph/sectioneditors/health_care_sci\)](#)
- [Health Communication and Informatics Section \(/journal/ijerph/sectioneditors/Health_Communication\)](#)
- [Toxicology and Public Health Section \(/journal/ijerph/sectioneditors/Toxicology_and_Public_Health_1\)](#)
- [Public Health Statistics and Risk Assessment Section \(/journal/ijerph/sectioneditors/Statistics_Risk_Assessment\)](#)
- [Environmental Microbiology Section \(/journal/ijerph/sectioneditors/environmental_microbiology_\)](#)
- [Oral Health Section \(/journal/ijerph/sectioneditors/Oral_Health\)](#)
- [Exercise and Health Section \(/journal/ijerph/sectioneditors/Exercise-Health\)](#)
- [Traumas Section \(/journal/ijerph/sectioneditors/traumas\)](#)
- [Nursing Section \(/journal/ijerph/sectioneditors/nursing\)](#)
- [Adolescents Section \(/journal/ijerph/sectioneditors/adolescents\)](#)
- [Skin Health Section \(/journal/ijerph/sectioneditors/skin-health\)](#)
- [Disabilities Section \(/journal/ijerph/sectioneditors/disabilities\)](#)
- [Reproductive Health Section \(/journal/ijerph/sectioneditors/reproductive-health\)](#)
- [Sport and Health Section \(/journal/ijerph/sectioneditors/sport_health\)](#)
- [Aging Section \(/journal/ijerph/sectioneditors/aging\)](#)
- [Air Section \(/journal/ijerph/sectioneditors/Air\)](#)
- [Water Science and Technology Section \(/journal/ijerph/sectioneditors/water_science_technology\)](#)
- [Anthropogenic Circularity Section \(/journal/ijerph/sectioneditors/anthropogen_circularity\)](#)
- [Chemoenvironment Section \(/journal/ijerph/sectioneditors/chemoenvironment\)](#)
- [Environmental Earth Science and Medical Geology Section \(/journal/ijerph/sectioneditors/earth\)](#)
- [Biosafety Section \(/journal/ijerph/sectioneditors/biosafety\)](#)
- [Disease Prevention Section \(/journal/ijerph/sectioneditors/disease_prevention\)](#)
- [Health-Related Quality of Life and Well-Being Section \(/journal/ijerph/sectioneditors/health-related_quality_of_life_and_well-being\)](#)
- [Injury Prevention and Rehabilitation Section \(/journal/ijerph/sectioneditors/injury_prevention_and_rehabilitation\)](#)
- [Disaster Medicine Section \(/journal/ijerph/sectioneditors/disaster_medicine\)](#)
- [Environmental Ecology Section \(/journal/ijerph/sectioneditors/environmental_ecology\)](#)



Members (1878)

Search by first name, last name, affiliation,



Prof. Dr. Paul B. Tchounwou

Website (<https://www.jsums.edu/biology/dr-paul-b-tchounwou/>) **SciProfiles** (<https://sciprofiles.com/profile/84>)

Editor-in-Chief

Department of Biology, College of Science, Engineering and Technology, Jackson State University, 1400 Lynch Street, Box 18750, Jackson, MS 39217, USA

Interests: environmental health and diseases; gene-environment interactions; environmental toxicology, mutagenesis and carcinogenesis; environmental epidemiology and disease control; health risk assessment and management; ecological risk assessment and management; environmental chemistry and computational toxicology; environmental genomics and proteomics; environmental medicine; and natural resources damage assessment and management

Special Issues, Collections and Topics in MDPI journals



Prof. Dr. Javier Abián-Vicén

Website (<https://dialnet.unirioja.es/servlet/autor?codigo=917925>) **Website2** (<https://dialnet.unirioja.es/servlet/autor?codigo=917925>)
SciProfiles (<https://sciprofiles.com/profile/1313137>)

Section Editor-in-Chief

Performance and Sport Rehabilitation Laboratory (DEPORSALUD), Faculty of Sports Sciences, University of Castilla-La Mancha, Avda. Carlos III s/n, 45071 Toledo, Spain

Interests: sport science; sport biomechanics; physical activity; caffeine; ergogenic aids; racquet sports; injury prevention; exercise performance; sonoelastography in sports injury diagnosis

[Special Issues, Collections and Topics in MDPI journals](#)



Dr. David Berrigan

Website (<https://staffprofiles.cancer.gov/brp/prgmStaffProfile.do?contactId=1456>) **SciProfiles** (<https://sciprofiles.com/profile/244332>)

Section Editor-in-Chief

Division of Cancer Control and Population Sciences, Behavioral Research Program, National Cancer Institute, 9609 Medical Center Drive MSC 7344, Bethesda, MD 20892, USA

Interests: cancer prevention; built environment; physical activity; obesity; energy balance; natural experiments; transportation and health; acculturation; geospatial approaches to cancer control; childhood obesity

[Special Issues, Collections and Topics in MDPI journals](#)



Prof. Dr. Fabrizio Bert

Website (https://medchirurgia.campusnet.unito.it/do/docenti.pl/Show?_id=fbert) **SciProfiles** (<https://sciprofiles.com/profile/83970>)

Section Editor-in-Chief

Department of Public Health, University of Turin, Via Santena 5 bis, 10126 Turin, Italy

Interests: public health; epidemiology; e-health; mental health; minority health

[Special Issues, Collections and Topics in MDPI journals](#)



Dr. Zahid Ahmad Butt

Website (<https://uwaterloo.ca/public-health-and-health-systems/people-profiles/zahid-butt>) **SciProfiles** (<https://sciprofiles.com/profile/1062057>)

Section Editor-in-Chief

School of Public Health and Health Systems, University of Waterloo, 200 University Avenue West, Waterloo, ON N2L 3G1, Canada

Interests: HIV/HCV/HBV coinfections; vaccine preventable diseases; communicable and non-communicable disease syndemics; global health; big data; spatial analysis of complex data

[Special Issues, Collections and Topics in MDPI journals](#)



Prof. Dr. Alessandra Casuccio

Website (<https://pure.unipa.it/en/persons/alessandra-casuccio-4>) **SciProfiles** (<https://sciprofiles.com/profile/395539>)

Section Editor-in-Chief

Department of Health Promotion Sciences Maternal and Infant Care, Internal Medicine and Medical Specialties "G. D'Alessandro" – Hygiene Section, University of Palermo, 90133 Palermo, Italy

Interests: public health; preventive medicine; communicable disease prevention; health promotion; palliative care epidemiology; health determinants

[Special Issues, Collections and Topics in MDPI journals](#)



Prof. Dr. Lingxin Chen *

★ (<https://recognition.webofsciencegroup.com/awards/highly-cited/2020/>) **Website1** (<https://people.ucas.ac.cn/~0008768?language=en>)

Website2 (<https://www.researchgate.net/profile/Lingxin-Chen>) **SciProfiles** (<https://sciprofiles.com/profile/968812>)

Section Editor-in-Chief

CAS Key Laboratory of Coastal Environmental Processes and Ecological Remediation, Shandong Key Laboratory of Coastal Environmental Processes, Research Center for Coastal Environmental Engineering and Technology of Shandong Province, Yantai Institute of Coastal Zone Research, Chinese Academy

of Sciences, Yantai 264003, China

Interests: coastal zone pollutants; typical water body pollutants; microanalysis techniques; environmental microanalysis; oceanic oil spill; situ on-line and real-time environmental monitoring techniques

* Section: Environmental Science and Engineering

[Special Issues, Collections and Topics in MDPI journals](#)



Dr. Cristina Cortis

[Website \(https://www.unicas.it/didattica/docenti/schedadocente.aspx?nome_cognome=cristina_cortis\)](https://www.unicas.it/didattica/docenti/schedadocente.aspx?nome_cognome=cristina_cortis)

[SciProfiles \(https://sciprofiles.com/profile/503847\)](https://sciprofiles.com/profile/503847)

Section Editor-in-Chief

Department of Human Sciences, Society and Health, University of Cassino and Lazio Meridionale, 03043 Cassino, Italy

Interests: sport performance; athlete's stress management; ageing wellbeing

[Special Issues, Collections and Topics in MDPI journals](#)



Prof. Dr. Kristie L. Ebi

[Website \(https://globalhealth.washington.edu/faculty/kristie-ebi\)](https://globalhealth.washington.edu/faculty/kristie-ebi) [SciProfiles \(https://sciprofiles.com/profile/390396\)](https://sciprofiles.com/profile/390396)

Section Editor-in-Chief

Department of Global Health, University of Washington, 4225 Roosevelt Way NE, Seattle, WA 98105, USA

Interests: health risks of climate variability and change; health adaptation; health co-benefits of mitigation policy; sustainable development

[Special Issues, Collections and Topics in MDPI journals](#)



Prof. Dr. Jimmy T. Efid *

[Website \(https://loop.frontiersin.org/people/36394/overview\)](https://loop.frontiersin.org/people/36394/overview) [SciProfiles \(https://sciprofiles.com/profile/430\)](https://sciprofiles.com/profile/430)

Section Editor-in-Chief

1. VA Cooperative Studies Program Coordinating Center, Boston, MA 02130, USA

2. Department of Radiation Oncology, Case Western Reserve University School of Medicine, Cleveland, OH 44106, USA

Interests: statistical methods; epidemiological study design; risk modeling; cardiovascular disease; cancer

* Section: Public Health Statistics and Risk Assessment

[Special Issues, Collections and Topics in MDPI journals](#)



Prof. Dr. William Douglas Evans

[Website \(https://publichealth.gwu.edu/departments/prevention-and-community-health-global-health/w-douglas-evans\)](https://publichealth.gwu.edu/departments/prevention-and-community-health-global-health/w-douglas-evans)

[SciProfiles \(https://sciprofiles.com/profile/336941\)](https://sciprofiles.com/profile/336941)

Section Editor-in-Chief

Milken Institute School of Public Health, Washington, DC 20052, USA

Interests: design and evaluation of interventions using digital technologies; improving health equity through marketing and communication; social norms, social and behavior change (SBC); social marketing

[Special Issues, Collections and Topics in MDPI journals](#)



Prof. Dr. Xinbin Feng

[Website \(http://sourcedb.gyig.cas.cn/yw/pe/200908/t20090806_2331083.html\)](http://sourcedb.gyig.cas.cn/yw/pe/200908/t20090806_2331083.html) [SciProfiles \(https://sciprofiles.com/profile/1026180\)](https://sciprofiles.com/profile/1026180)

Section Editor-in-Chief

State Key Laboratory of Environmental Geochemistry, Institute of Geochemistry, Chinese Academy of Sciences, Guiyang 550081, China

Interests: biogeochemical cycling of heavy metals in the environment and health impacts; non-traditional stable isotope geochemistry; remediation of heavy metal contaminated environment

[Special Issues, Collections and Topics in MDPI journals](#)

Prof. Dr. Olaf Gefeller

Website (<https://www.fau.eu/person/olaf-gefeller/>) **SciProfiles** (<https://sciprofiles.com/profile/206065>)

Section Editor-in-Chief

Department of Medical Informatics, Biometry and Epidemiology, Friedrich-Alexander-University of Erlangen-Nuremberg, 91054 Erlangen, Germany

Interests: epidemiology; biostatistics; melanoma; ultraviolet radiation; UV index; prevention of sun exposure

[Special Issues, Collections and Topics in MDPI journals](#)



Prof. Dr. Ulf-G. Gerdtham

Website ([http://portal.research.lu.se/portal/en/persons/ulf-gerdtham\(883e0d0d-e6d4-426b-8851-28c263a83e30\).html](http://portal.research.lu.se/portal/en/persons/ulf-gerdtham(883e0d0d-e6d4-426b-8851-28c263a83e30).html))

SciProfiles (<https://sciprofiles.com/profile/11825>)

Section Editor-in-Chief

Department of Clinical Sciences, Department of Economics, Lund University, P.O. Box 7082, S-220 07 Lund, Sweden

Interests: health economics; health econometrics; inequalities in health; economics of health behaviour; international health expenditure; health system and organization

[Special Issues, Collections and Topics in MDPI journals](#)



Prof. Dr. Karl Goodkin

Website (<https://www.unmc.edu/psychiatry/about/faculty/Goodkin.html>) **SciProfiles** (<https://sciprofiles.com/profile/2322884>)

Section Editor-in-Chief

Department of Psychiatry, University of Nebraska Medical Center in Omaha, Omaha, NE 68198, USA

Interests: HIV-associated neurocognitive disorders (HAND); major depressive disorder in persons living with HIV; aging and HIV infection; global epidemiology of HAND; psychoneuroimmunology; psycho-oncology; chronic pain



Dr. Jun Hou

Website (<http://hjxy.hhu.edu.cn/english/2017/1020/c9934a159184/page.htm>) **SciProfiles** (<https://sciprofiles.com/profile/692074>)

Section Editor-in-Chief

College of Environment, Hohai University, Nanjing 210098, China

Interests: water quality improvement technology; water environment protection and bioremediation; coupling of biofilms and active substrata; ecological engineering; nanomaterials for environmental remediation; environmental behaviors of nanomaterials; toxicity of manufactured nanoparticles

[Special Issues, Collections and Topics in MDPI journals](#)



Prof. Dr. Ivo Iavicoli

Website (<https://www.docenti.unina.it/ivo.iavicoli>) **SciProfiles** (<https://sciprofiles.com/profile/50033>)

Section Editor-in-Chief

Department of Public Health, University of Naples Federico II, Via Pansini 5, 80131 Naples, Italy

Interests: occupational medicine; public health; nanosafety; active aging; occupational toxicology; industrial health; biological monitoring; occupational risk assessment; occupational diseases; occupational carcinogens

[Special Issues, Collections and Topics in MDPI journals](#)



Prof. Dr. Dongsheng Ji

Website (<https://people.ucas.edu.cn/~dongshengji?language=en>) **SciProfiles** (<https://sciprofiles.com/profile/2238773>)

Section Editor-in-Chief

State Key Laboratory of Atmospheric Boundary Layer Physics and Atmospheric Chemistry, Institute of Atmospheric Physics, Chinese Academy of Sciences, Beijing 100029, China

Interests: atmospheric environment; atmospheric chemistry; atmospheric physics; aerosol chemistry; volatile organic compounds; photochemical air pollution; regional air pollution; hazardous airborne elements; carbonaceous aerosols; atmospheric pollution control

Prof. Dr. Fulvio Lauretani

Website (<https://en.unipr.it/ugov/person/97003>) **SciProfiles** (<https://sciprofiles.com/profile/331763>)

Section Editor-in-Chief

Geriatric Rehabilitation Department, University Hospital of Parma, University of Parma, 43121 Parma, Italy

Interests: frail older persons; parkinsonism; dementia; amyloid PET; older persons

[Special Issues, Collections and Topics in MDPI journals](#)



Prof. Dr. Nicola Magnavita

[Website \(https://www.researchgate.net/profile/Nicola_Magnavita\)](https://www.researchgate.net/profile/Nicola_Magnavita) **[SciProfiles \(https://sciprofiles.com/profile/184772\)](https://sciprofiles.com/profile/184772)**

Section Editor-in-Chief

Department of Public Health, Università Cattolica del Sacro Cuore, Largo Gemelli 8, 00168 Roma, Italy

Interests: health promotion; public health; epidemiology health; risk assessment; safety; risk analysis; epidemiology and public Health; Healthcare; Environmental Risk Assessment; Health and Safety sleep disorders and sleep medicine; risk factors; determination health risk assessment; exposure assessment; environmental exposure occupational health; hospital management; chemical risk assessment environmental epidemiology; health impact assessment informed consent; occupational epidemiology; chemical safety occupational medicine; occupational health and disease; inhalation toxicology; environmental medicine; aging and work; hazardous workers

[Special Issues, Collections and Topics in MDPI journals](#)



Dr. Pantelis T. Nikolaidis

[Website \(https://www.researchgate.net/profile/Pantelis_Nikolaidis\)](https://www.researchgate.net/profile/Pantelis_Nikolaidis) **[SciProfiles \(https://sciprofiles.com/profile/147346\)](https://sciprofiles.com/profile/147346)**

Section Editor-in-Chief

School of Health and Caring Sciences, University of West Attica, 12243 Athens, Greece

Interests: exercise testing; exercise physiology; ergometer; calorimetry; anaerobic power; cardiorespiratory fitness

[Special Issues, Collections and Topics in MDPI journals](#)



Prof. Dr. Jon Øyvind Odland

[Website \(https://www.ntnu.no/ansatte/jon.o.odland\)](https://www.ntnu.no/ansatte/jon.o.odland) **[SciProfiles \(https://sciprofiles.com/profile/877454\)](https://sciprofiles.com/profile/877454)**

Section Editor-in-Chief

Department of Public Health and Nursing, UiT The Arctic University of Norway, 9037 Tromsø, Norway

Interests: public health; epidemiology; environmental health; reproductive health; pregnancy care; climate change

[Special Issues, Collections and Topics in MDPI journals](#)



Prof. Dr. David Rodríguez-Lázaro

[Website \(https://investigacion.ubu.es/investigadores/35482/detalle?lang=en\)](https://investigacion.ubu.es/investigadores/35482/detalle?lang=en) **[SciProfiles \(https://sciprofiles.com/profile/929065\)](https://sciprofiles.com/profile/929065)**

Section Editor-in-Chief

Microbiology Section, Department of Biotechnology and Food Science, Faculty of Science, University of Burgos, 09001 Burgos, Spain

Interests: food-borne pathogens; food safety; food microbiology

[Special Issues, Collections and Topics in MDPI journals](#)



Prof. Dr. Jinyou Shen

[Website \(https://ebe.njust.edu.cn/4b/d0/c5080a216016/page.htm\)](https://ebe.njust.edu.cn/4b/d0/c5080a216016/page.htm) **[SciProfiles \(https://sciprofiles.com/profile/2120171\)](https://sciprofiles.com/profile/2120171)**

Section Editor-in-Chief

School of Environmental and Biological Engineering, Nanjing University of Science and Technology, Nanjing 210094, China

Interests: wastewater treatment process; environmental engineering; anaerobic digestion; bioelectrochemistry; nanobiotechnology; advanced oxidation processes treatment; environmental remediation; biodegradation; renewable energy

[Special Issues, Collections and Topics in MDPI journals](#)



Prof. Dr. Gianrico Spagnuolo

Website (<https://cutt.ly/VlhRTM1>) **SciProfiles** (<https://sciprofiles.com/profile/477376>)

Section Editor-in-Chief

Department of Neuroscience, Reproductive and Odontostomatological Sciences, University of Naples "Federico II", 80131 Naples, Italy

Interests: oral medicine; dental materials; operative dentistry; oral health

[Special Issues, Collections and Topics in MDPI journals](#)



Prof. Dr. William A. Toscano

Website (<https://directory.sph.umn.edu/bio/sph-a-z/william-toscano>) **SciProfiles** (<https://sciprofiles.com/profile/10959>)

Section Editor-in-Chief

Division of Environmental Health Sciences, University of Minnesota, School of Public Health, Minneapolis, MN 55455, USA

Interests: toxicology; environmental hormones; public health genomics; environmental signaling

[Special Issues, Collections and Topics in MDPI journals](#)



Prof. Dr. Germán Vicente-Rodríguez

Website (<https://sideral.unizar.es/sideral/CV/german-vicente-rodriguez>) **SciProfiles** (<https://sciprofiles.com/profile/692355>)

Section Editor-in-Chief

Department of Physiatry and Nursing, Faculty of Health and Sport Sciences (FCSD), University of Zaragoza, Ronda Misericordia 5, 22001 Huesca, Spain

Interests: physical activity and health during life; exercise prescription; exercise–diet interaction for health; healthy and active aging; body composition; special populations

[Special Issues, Collections and Topics in MDPI journals](#)



Prof. Dr. Linyu Xu

Website (<http://envfaculty.bnu.edu.cn/Public/htm/news/5/37.htm>) **SciProfiles** (<https://sciprofiles.com/profile/44912>)

Section Editor-in-Chief

State Key Joint Laboratory of Environmental Simulation and Pollution Control, School of Environment, Beijing Normal University, Beijing 100875, China

Interests: urban ecological environment; economic environmental management; environmental risk assessment; urban ecological planning

[Special Issues, Collections and Topics in MDPI journals](#)



Dr. Xianlai Zeng

Website (<https://www.tsinghua.edu.cn/enven/info/1052/1964.htm>) **SciProfiles** (<https://sciprofiles.com/profile/152107>)

Section Editor-in-Chief

School of Environment, Tsinghua University, Beijing 100084, China

Interests: urban mining; resource evaluation; E-waste management; circular economy

[Special Issues, Collections and Topics in MDPI journals](#)



Prof. Dr. Luca Paolo Ardigo

Website (<https://www.nla.no/en/ansattliste/ansatte/luca-paolo-ardigo/>) **SciProfiles** (<https://sciprofiles.com/profile/455338>)

Section Associate Editor

Department of Teacher Education, NLA University College, Linstovs Gate 3, 0166 Oslo, Norway

Interests: training load monitoring; physical activity; metabolic expenditure; motor control; sport technology; testing; training

[Special Issues, Collections and Topics in MDPI journals](#)

Displaying Editorial board member 1-30 on page 1 of 63.

Go to page [1](#) [2](#) [3](#) [4](#) [5](#) [6](#) [7](#) [8](#) [9](#) [10](#) [11](#) [12](#) [13](#) [14](#) [15](#) [16](#) [17](#) [18](#) [19](#) [20](#) [21](#) [22](#) [23](#) [24](#) [25](#) [26](#) [27](#) [28](#) [29](#) [30](#) [31](#) [32](#) [33](#) [34](#) [35](#) [36](#) [37](#) [38](#) [39](#) [40](#) [41](#) [42](#) [43](#) [44](#) [45](#) [46](#) [47](#) [48](#) [49](#) [50](#) [51](#) [52](#) [53](#) [54](#) [55](#) [56](#) [57](#) [58](#) [59](#) [60](#) [61](#) [62](#) [63](#)

[Int. J. Environ. Res. Public Health](#) (*Journal* [/ijerph](#)), EISSN 1660-4601, Published by MDPI

[RSS](#) ([/rss/journal/ijerph](#)) **[Content Alert](#)** ([/journal/ijerph/toc-alert](#))

[Article Processing Charges \(/apc\)](#)

[Pay an Invoice \(/about/payment\)](#)

[Open Access Policy \(/openaccess\)](#)

[Contact MDPI \(/about/contact\)](#)

[Jobs at MDPI \(https://careers.mdpi.com\)](https://careers.mdpi.com)



Guidelines

[For Authors \(/authors\)](#)

[For Reviewers \(/reviewers\)](#)

[For Editors \(/editors\)](#)

[For Librarians \(/librarians\)](#)

[For Publishers \(/publishing_services\)](#)

[For Societies \(/societies\)](#)

[For Conference Organizers \(/conference_organizers\)](#)

MDPI Initiatives

[Sciforum \(https://sciforum.net\)](https://sciforum.net)

[MDPI Books \(https://www.mdpi.com/books\)](https://www.mdpi.com/books)

[Preprints \(https://www.preprints.org\)](https://www.preprints.org)

[Scilit \(https://www.scilit.net\)](https://www.scilit.net)

[SciProfiles \(https://sciprofiles.com\)](https://sciprofiles.com)

[Encyclopedia \(https://encyclopedia.pub\)](https://encyclopedia.pub)

[JAMS \(https://jams.pub\)](https://jams.pub)

[Proceedings Series \(/about/proceedings\)](#)

Follow MDPI

[LinkedIn \(https://www.linkedin.com/company/mdpi\)](https://www.linkedin.com/company/mdpi)

[Facebook \(https://www.facebook.com/MDPIOpenAccessPublishing\)](https://www.facebook.com/MDPIOpenAccessPublishing)

[Twitter \(https://twitter.com/MDPIOpenAccess\)](https://twitter.com/MDPIOpenAccess)

Subscribe to receive issue release notifications and newsletters from MDPI journals

Select options 

Enter your email address...

Subscribe



Systematic Review

Economic Burden of SARS-CoV-2 Patients with Multi-Morbidity: A Systematic Review Protocol

Amirah Azzeri ^{1,2,*} , Mohd Noor Afiq Ramlee ^{1,2} , Mohd Iqbal Mohd Noor ^{3,4,*} , Mohd Hafiz Jaafar ^{1,2,*},
Thinni Nurul Rochmah ⁵ and Maznah Dahlui ^{2,6}

- ¹ Faculty of Medicine & Health Science, Universiti Sains Islam Malaysia (USIM), Persiaran Ilmu, Bandar Baru Nilai, Nilai 71800, Negeri Sembilan, Malaysia
 - ² Department of Research Development and Innovation, University of Malaya Medical Centre (UMMC), Lembah Pantai, Kuala Lumpur 59100, Malaysia
 - ³ Faculty of Business Management, Universiti Teknologi MARA (UiTM) (Pahang), Raub 27600, Pahang, Malaysia
 - ⁴ Institute for Biodiversity and Sustainable Development, Universiti Teknologi MARA (UiTM), Shah Alam 40450, Selangor, Malaysia
 - ⁵ Department of Health Administration and Policy, Faculty of Public Health, Universitas Airlangga, Surabaya 60115, Jawa Timur, Indonesia
 - ⁶ Centre of Population Health, Department of Social and Preventive Medicine, Faculty of Medicine, Universiti Malaya, Kuala Lumpur 50603, Malaysia
- * Correspondence: amirah.azzeri@usim.edu.my (A.A.); mohdiqbalmn@uitm.edu.my (M.I.M.N.); dr.hafizjaafar@usim.edu.my (M.H.J.); Tel.: +60-132088543 (A.A.); +60-93515327 (M.I.M.N.); +60-172888543 (M.H.J.)



Citation: Azzeri, A.; Ramlee, M.N.A.; Noor, M.I.M.; Jaafar, M.H.; Rochmah, T.N.; Dahlui, M. Economic Burden of SARS-CoV-2 Patients with Multi-Morbidity: A Systematic Review Protocol. *Int. J. Environ. Res. Public Health* **2022**, *19*, 13157. <https://doi.org/10.3390/ijerph192013157>

Academic Editor: Paul B. Tchounwou

Received: 11 August 2022

Accepted: 8 October 2022

Published: 13 October 2022

Publisher's Note: MDPI stays neutral with regard to jurisdictional claims in published maps and institutional affiliations.

Abstract: Economic burden issues in SARS-CoV-2 patients with underlying co-morbidities are enormous resources for patient treatment and management. The uncertainty costs for clinical management render the healthcare system catatonic and incurs deficits in national annual budgets. This article focuses on systematic steps towards selecting and evaluating literature to uncover gaps and ways to help healthcare stakeholders optimize resources in treating and managing COVID-19 patients with multi-morbidity. A systematic review of all COVID-19 treatment procedures with co-morbidities or multi-morbidity for the period from 2019 to 2022 was conducted. The search includes studies describing treatment costs associated with multi- or co-morbidity cases for infected patients and, if concurrently reported, determining recurring expenses. Study selection will follow the Preferred Reporting Items for Systematic Reviews and Meta-Analyses (PRISMA) guidelines. Galbraith plots and I^2 statistics will be deployed to assess heterogeneity and to identify potential sources. A backward elimination process will be applied in the regression modelling procedure. Based on the number of studies retrieved and their sample size, the subgroup analysis will be stratified on participant disease category, associated total costs, and degree of freedom in cost estimation. These studies were registered in the PROSPERO registry (ID: CRD42022323071).

Keywords: COVID-19; economic burden; comorbidity; cardio/cerebrovascular; diabetes; hypertension; respiratory diseases



Copyright: © 2022 by the authors. Licensee MDPI, Basel, Switzerland. This article is an open access article distributed under the terms and conditions of the Creative Commons Attribution (CC BY) license (<https://creativecommons.org/licenses/by/4.0/>).

1. Introduction

SARS-CoV-2 infection significantly negatively impacts human lives and has dramatically affected the global economy. During the start of the COVID-19 waves in late 2019, the World G.D.P. (World Gross Domestic Product per capita) growth rate was 2.33% (a decline of 0.7% compared to 2018), which took a significant plunge in 2020, when the total G.D.P. marked its greatest decline at -3.60% (a drop of 5.93% from 2019), the lowest since 1961 [1,2]. Most human activities halted as most countries opted to undergo lockdowns to reduce cases. Due to those restrictions, there was a massive impact on the economy and the environment; there are several reports that indicate the reduced economic consumption

of resources, such as electricity [3,4], food [5], and necessities [5–7], resulting in financial losses for businesses and vice versa and government revenue in the form of taxes. Despite that, substantial resources were poured into the healthcare system to combat the pandemic. The resilience of the COVID-19 pandemic and the spread of this virus have significantly impacted the healthcare system [8].

As time passes, more mutations of SARS-CoV2 emerge. Although most changes in the COVID-19 variants have little to no impact on the virus properties, some of these alterations threaten global healthcare [9,10]. The iterations of the variant of concern (V.O.C.) introduce a new parameter in the healthcare system, as a new V.O.C. results in different disease severity, is easily spread, or even compromises the performance of vaccines, medicines, diagnosis tools, and other public health measures [9–12]. The ever-changing nature of some V.O.C., especially VOC-LUM (variant of concern lineage under monitoring) cases, is becoming much more difficult for patients who suffer from co-morbidities before contracting the virus as clinical management becomes more elaborate and urgent and increasing mortality based on prior and new complication results. The co-circulation of variants with additional new V.O.C. renders the healthcare system catatonic. At the same time, the existing morbidities of the patient's treatment regime will differ while using more resources.

These complications open up a new avenue for researchers to identify the resources used in treating patients suffering from the SARS-CoV-2 virus with prior morbidities to further identify the essential resources needed to treat patients and to further strengthen COVID-19 responses while adequately allocating time and healthcare resources required in similar cases [8,13–17]. In order to uncover the complications in COVID-19 patients with multi-morbidities, our research focuses on systematic steps toward selecting and evaluating the scientific literature to find gaps [16,18] and the way forward to help healthcare stakeholders further understand and provide informed decision-making procedures to optimize resources in treating and managing said underlying conditions.

The primary question for this systematic review is, “what is the economic effect of COVID-19 patients that suffer multi-morbidity towards medical practitioners?”. Hence, to answer the research question, this review aims to determine the direct medical costs associated with the clinical management of COVID-19 patients with background co-morbidities or who have multi-morbidity. This research question is broken down into the Population, Intervention, Comparison, and Outcome scheme (PICO). The above primary question methodologies contain critical elements of the keyword's column [18].

2. Materials and Methods

2.1. Methodological Overview

This systematic review protocol applies the Guidelines and Standards for Cochrane Reviews under the COVID-END initiative by PROSPERO. The reporting of the full systematic review will follow the PRISMA Statement 2020 for the review protocol, as all research article search databases, registries, and other sources are compiled according to PRISMA Statement 2020, as shown in Figures 1 and 2 [19]. The essential aspects of the review process are written down and kept as a permanent record [20,21]. PROSPERO's goal is to give a comprehensive listing of systematic reviews registered at the start of the project to avoid duplication and to reduce the risk of reporting bias by comparing the finished review with the protocol's plans. Reducing the risk of bias will follow the Cochrane Handbook, where the specifications of bias assessment will focus on the study and outcomes of the screened articles [22,23].

2.2. Bibliographic Databases

The literature search for the systematic review will be undertaken using Web of Science, Scopus, PubMed, G.H.L., V.H.L., EMBASE, Cochrane, POPLINE, and SIGLE (refer to Figure 1). In the initial step, before embarking on searching the databases for a journal, the authors will initiate a search for issue classification in the Cochrane or a Cochrane-

related database (such as PROSPERO) to avoid replication when conducting the literature review (refer Figure 2) [24,25].

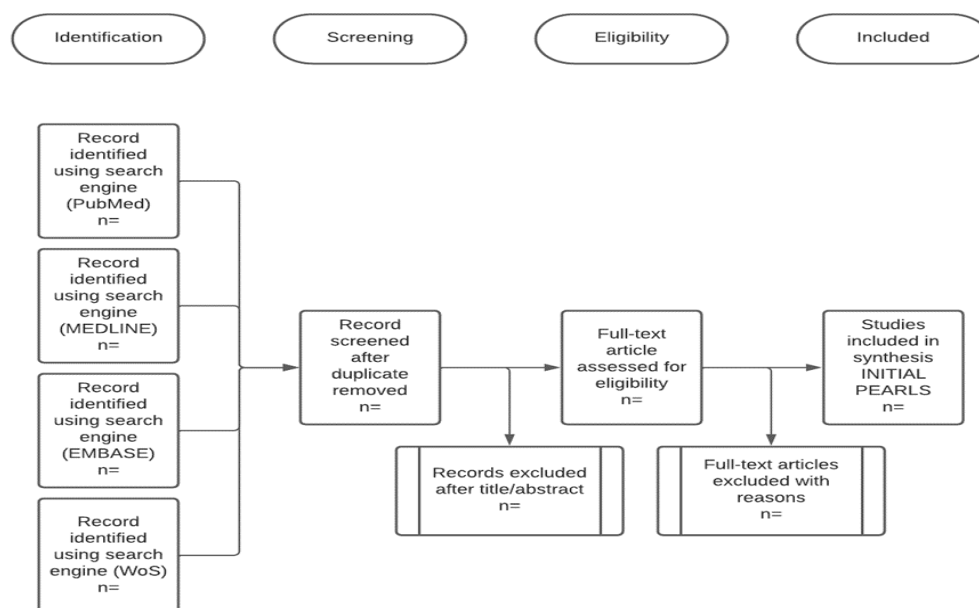


Figure 1. A schematic of the process of the systemic review. (Randomized controlled trials (R.C.T.s); Preferred Reporting Items for Systematic Reviews and Meta-Analyses (PRISMA).)

In Web of Science, PubMed, G.H.L., V.H.L., and POPLINE, the search strategy will be run based on the “topic” (T.S) field, which includes literature titles, research abstracts (short and/or extended abstract), keywords, and “Keywords Plus” (automatically generated terms pulled from the labels of cited articles).

In Scopus, EMBASE, SIGLE, and MEDLINE, literature titles, research abstracts, and keywords will be searched using the exact search string used in the Web of Science database, outlined in Section 2.3. All years will be explored. Search results will be selected and exported to a Microsoft Excel spreadsheet and Endnote X9 (reference management software).

2.3. Searching for Articles and Comprehensiveness of the Searches

Article comprehensiveness is obtained from the search engines through inclusion and exclusion criteria [26]. Comprehensiveness includes the level of readability and ethicality. From here, the scope of the search is run first in the protocol registry to ensure that the scope of the investigations does not replicate research that has been completed or that has undergone a review process [26]. Early protocol registration provides transparency in the research process and safeguards against duplication issues. It also confirms a team’s action plan, research question, eligibility criteria, intervention/exposure, quality evaluation, and pre-analysis strategy.

The scoping exercise will use the quality assessment suggestions by Cochrane, where individual study quality will be categorized into three parts: low- (criteria fully met), moderate- (criteria partially met), and high-risk of bias (criteria not met), the requirements for which are listed in the section describing inclusion and exclusion [27–30].

2.4. Search Terms

The search technique uses a three-stage protocol to find only published publications (Figure 1). A preliminary search for a similar review will be conducted through the literature review database (Figure 2), which will be followed by an examination of the text words found in the titles and abstracts and the index keywords used to describe each article (keywords strategy as in Table 1). The search strategies consist of searchable keywords in the Boolean operator. Each keyword in the P, I, C, and O items will be linked with the

“OR” Boolean operator, and all of the PICO items will be connected with “AND”. Special Boolean characters such as “*” will be used as inclusion criteria for possible adjectives, and “\$” or “-” will be used to link each character as one keyword.

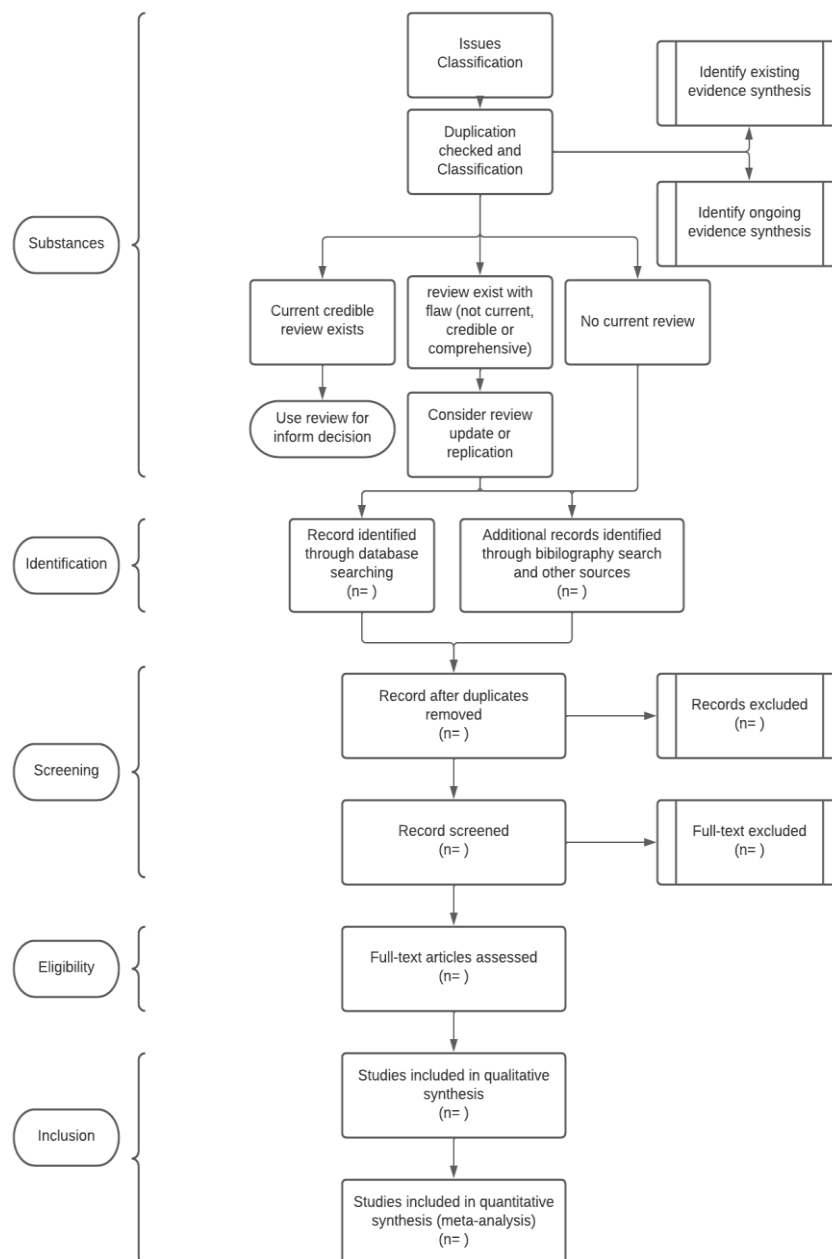


Figure 2. Full flow for search criteria of the systemic review. (Includes database search strategies to include or exclude specific studies from duplicate titles or subjects).

A second search will be conducted across all databases utilizing all specified keywords and index phrases. Additional research will be found in the third phase by searching the reference lists of influential papers. The studies will be limited to those written in English and published between 2019 and 2022. Medline, Science Direct, Scopus, Web of Science, the Cochrane Library of Systematic Reviews, PROSPERO Systematic Reviews on Health Science, ProQuest, Wiley, and Highwire Press will be searched.

Table 1. Components of the primary research questions with search strategies [17].

Item	Keywords	Search Terms	Search Strategies
P = Population/ Patient/Problem	Patients suffer COVID-19	COVID-19	"COVID" OR "HCoV-19" OR "2019-nCoV" OR "SARS-CoV-2" OR "SARS-nCoV-2" OR "COVID\$19*" OR (coronavirus) OR ("novel\$corona*")
I = Intervention	Patients suffer COVID-19 with multimorbidity, co-morbidity cases, AND related diseases	Multi-, co-morbidity, and related diseases	(("Multi-morbidity*") OR ("Comorbidity*") OR ("Multi-chronic condition") OR ("Multiple chronic condition") OR ("disorder*") OR ("Multi\$disorder") OR ("dignos*") OR ("co\$dignos*") OR ("cancer*") OR ("cerebrovasc*") OR ("chronic\$lung*") OR ("chronic\$liver*") OR ("cyst*") OR ("diabetes*") OR ("heart*") OR ("neuro*") OR ("immuno*") OR ("tuberculo*"))
O = Outcome	Treatment cost for patient or world economic implication	Cost	((econom*) OR (cost*) OR (fee*) OR ("fees") OR (charge*) OR ("organized\$financing") OR (grant*) OR (financ*) OR (reimburse*) OR ("prospective\$payment*") OR ("prospective\$payment&system*") OR ("prospective\$reimbursement*") OR ("prospective\$reimbursement system*") OR ("prospective\$price*") OR ("block\$fund*") OR (blockfund*) OR ("bulk\$fund*") OR (bulkfund*) OR ("lump\$sum*") OR (lumpsum*) OR (pay) OR ("payment") OR (payments) OR (paying) OR (purchase) OR (purchasing) OR (purchased) OR ("price") OR ("pricing") OR ("fund*") OR (capitation) OR ("regulation") OR ("incentiv*") OR ("econ*\$implication") OR ("econ*\$burden*") OR ("cost\$of\$ill*") OR ("burden\$of\$ill*") OR ("cost\$of\$sick*") OR ("disease\$cost*") OR ("sick*\$cost*")

These search strategies include population, intervention, and outcome only.

2.5. Eligibility Criteria

Eligibility criteria are essential in undergoing literature selection to produce an excellent systematic review and meta-analysis. The eligibility for literature to be selected consists of inclusion and exclusion criteria to ensure the quality of the final evaluation. The quality assessment will follow the Cochrane Risk of Bias tool (Cochrane RoB2) [22,25,27]. The inclusion and exclusion criteria are as mentioned below.

2.5.1. Inclusion Criteria

Our study will include research published in the allocated time frame of 2019 to 2022. Due to the emergence of COVID-19 in December 2019, the search results from 2019 to 2022 intend to capture any early reports of coronavirus studies before the virus outbreak. The 2022 search results will include all related literature that mentions all of the information relevant to this research. All of the related search criteria in the PRISMA methodologies that have the PICO statement (Population, Intervention, Comparison and Outcome) are listed in Table 1 [19]. However, Comparison keywords are not included, as there is a non-related comparison, as we include all economic and population factors in this research. The statement of the PICO keywords is an essential strategy for mining the MeSH Database (Medical Subject Headings Database). Databases that use MeSH terms include (but are not limited to) all related journals in this database (PubMed, CINAHL Complete, Medline) and are used as a criterion for selecting reputable publications to be used as references while conducting data extraction and analysis.

2.5.2. Exclusion Criteria

As this protocol aims to establish a standard practice for reviews and meta-analyses, several factors would be considered exclusion criteria when selecting a publication. A publication is only regarded as reputable if it has references. Therefore, only peer-reviewed publications from Medline, Science Direct, Scopus, Web of Science, Cochrane Library of Systematic Reviews, ProQuest, Wiley, and Highwire Press will be included, and other related publications will be excluded. Non-peer reviewed literature, known as grey literature, will be excluded because (a) there are no consistent means to assess the scientific rigor of the publications and (b) there is no systematic method for retrieving this literature. The searches will be conducted in English, and only English-language literature will be included due to the project scope, timeline, and funding.

This research will also exclude patients who did not exhibit or suffer multi- or comorbidities as pre-existing conditions before contacting COVID-19. Therefore, any complications post-contacting COVID-19 will be excluded from this research.

The most important factors are that the studies conducted in English are preferred due to the sheer number of publications to be filtered. This literature filtering is important to help reduce the cost of translating research articles and the probability of wasting resources post-translation after the elimination of unrelated themes.

However, there are no restrictions for research geography, population, type of research, and study design, as these have been deemed unrelated to this particular study.

2.6. Article Screening

All articles identified using the search string provided in Section 2.3 will be uploaded in EndNote X9 (reference management software), where the authors will delete any duplicate identifiers. After the duplicates have been removed, screening for the review will be evaluated based on (i) title and abstract eligibility and (ii) full-text eligibility. Screening will be assessed using the eligibility criteria listed in Section 2.4. Articles that pass the inclusion criteria and papers that seem unclear on their relevance at the title and abstract levels will be included and reviewed at the full-text level. A record of the included/excluded articles will be made for each stage. Articles excluded in the full-text step will be recorded with the reasons for exclusion as an Supplementary Materials.

Two reviewers will conduct this screening. Kappa tests will be performed to ensure the consistency and accuracy of the decisions by the two reviewers throughout the screening process. Overall, only 10% of the literature retrieved will be selected by non-reviewer experts in the research field search and screened independently by each reviewer. The selection of 10% by a non-reviewer expert is crucial to reduce risk of bias. Consistency in decisions will be analyzed using Cohen's Kappa test. A Kappa value of $K > 0.60$ is deemed significant for consistent and accurate findings [22,25,27]. In addition, any disagreements between reviewers will be discussed and resolved regardless of the Kappa value results. Suppose a retrieved publication was authored or co-authored by any of the two reviewers selected. In this case, the publication will be referred to another reviewer in the team for assessment.

2.7. Study Quality Assessment

A critical appraisal of study quality and strength will be carried out using standard quality assessment criteria for evaluating quantitative research adapted from critical quality appraisal assessment [25,28]. The checklist has eight (8) assessment criteria: (1) research objectives; (2) study designs; (3) study outcomes; (4) sample size calculations; (5) findings analysis; (6) variance estimations for the significant results; (7) good reported results; and (8) conclusions. The article scores two points if it satisfies the underlying criteria, one point if the article partially meets the requirements, and zero if the report does not meet any of the requirements.

2.8. Data Coding Strategy and Potential Effect Modifiers/Reasons for Heterogeneity

Descriptive analysis coding consists of multiple pieces of information from the articles, such as the title, article citation, year of publication, and location of the country of the lead author's affiliated institution. Then, a narrative synthesis is carried out using a thematic category that revolves around each article's key findings. These mainly include the study hypotheses, explaining the impact of COVID-19 on the micro-costs and economics for treating patients with pre-existing conditions. The synthesis followed a two-step coding process. First, a line-by-line review will be conducted on the articles to identify the critical impacts of alien invasive species. Each paper will be assigned a code label to cluster all of the information into a common theme. Two of the reviewers will independently perform the coding process; a discussion will be carried out with all reviewers to create a basis for a robust set of common themes.

2.9. Data Synthesis and Presentation

2.9.1. Thematic Synthesis

Thematic synthesis will focus on the direct medical costs for COVID-19 management among patients with multi/co-morbidities and factors associated with the cost variances.

2.9.2. Meta-Analysis

Because of the various outcomes measured and the sparse publication in this area, we believe that meta-analysis will be limited. Where studies have employed the same intervention- and outcome-measure type, the mixed results must be sorted according to manner. For analysis, we will utilize R Studio software for a random-effects meta-analysis to pool the data from randomized controlled trials, including standardized mean differences for continuous outcomes and risk ratios for binary outcomes, and to produce 95% confidence intervals and two-sided p values for each result. We will modify the standard deviations for the design impact in studies where the effects of clustering have not been considered using intraclass coefficients from the study reports or external estimates from similar studies.

The final report of the manuscript produced using this protocol will present a definition of multi- or co-morbidity status in COVID-19 patients and its derivative medical classification (for existing preconditions before contracting COVID-19), general popula-

tion and sample size, risk factors, and the output of each study. The conglomerations of data will be represented in tables, and the output analysis will be discussed in detail to pinpoint research gaps for future studies. After data synthesis and categorizing the studies mentioned above, the final report will be written using the Preferred Reporting Items for Systematic Reviews and Meta-Analyses (PRISMA) standards. In this step, a webinar will be held to share the list of definitions with an international group of specialists in the field of healthcare economics and allied medical practitioners. Their opinions on the best way to define the economic impact of multi- or co-morbidities in COVID-19 patients on the healthcare system will be gathered. A final consensus will be reached utilizing Delphi methodologies.

3. Discussion

The ongoing COVID-19 pandemic has been associated with considerable healthcare and humanistic burden. It is expected to lead to significant economic and financial implications and clinical responsibility. Countries need to be prepared to cope with the additional pressure on the healthcare system. There are many uncertainties in COVID-19 disease, and the magnitude of the healthcare and economic consequences is unknown. The COVID-19 pandemic will impact healthcare systems and patients in many aspects. The most immediate need is to address the increased healthcare burden and the demand for healthcare resources, including healthcare personnel, healthcare facilities, and an increased load of clinical episodes. The economic implications of managing COVID-19 patients with underlying co-morbidities or multi-morbidities are huge, as those patients are usually susceptible to developing the late stage of the disease, which requires a considerable number of resources, including expensive drugs and intubation, admission to intensive care units, and numerous blood and radiological investigations.

Nevertheless, shreds of evidence on the magnitude of the economic burden of treating these patients are sparse. Therefore, the systematic review and meta-analysis that will be conducted are essential to facilitate decisions in optimizing healthcare resource use and to help divert funds from other less critical services during this crisis. During the pandemic, many difficult decisions will need to be made, and data on the economic impact due to COVID-19 can help inform national policy and decision-making.

3.1. Limitation of Strength

The limitations of the systematic review protocol are that the study only considers scholarly articles reflected in Medline, Science Direct, Scopus, Web of Science, Cochrane Library of Systematic Reviews, ProQuest, Wiley and Highwire Press and does not include other web databases and grey literature and irregulated literature. The language inclusion criteria include only English and no other languages. To the author's knowledge, the strength of the protocol is that no review fills these gaps in the systematic mapping review literature, as it performs a broad search to review the costs associated with multi-morbidity treatment for SARS-CoV-2 patients.

3.2. Limitation of Biasness

While considering the selection strategies, there are three types of bias that need to be addressed in this manuscript: (1) selection bias, (2) information bias, and (3) confounding bias. Selection bias occurs due to the selection of only English-language manuscripts from peer-reviewed journals, which will result in a confined selection of information that results in selection bias. However, due to the reviewer's limitation of understanding articles written in other languages, the language barrier will further result in missing data or the gathering of misinformed data and will produce misinformation when constructing the S.L.R. The selection of peer-reviewed manuscripts also removes the likelihood of selecting false or misinformation data from grey-area publications. Despite the reviewer's acknowledgment of possible important and groundbreaking results being excluded based

on these limitations, the limitations are needed to enable the manuscript to adhere to the quality standard suggested early in the S.L.R.

Information bias occurs due to the human limitation of reviewing numerous pieces of literature to accept only quality manuscripts. This bias may be due to the selection of reviewers that are inadequate or not experts. To avoid information bias, we have several reviewers on the team. The team members consist of medical doctors, public health physicians, and health economists who are experts in the field. Most of the team members are members and important stakeholders in the COVID-19 taskforce team at local and international levels.

Confounding biases are possible and are very common in health economics studies. Many factors contribute to the higher direct medical costs of patient management other than co-morbidities. For example, the hospital system, healthcare finance, clinical pathways, length of stay, age, and other factors may also contribute to cost increases. However, based on our early desk research, many studies highlight that co-morbidities are the main cost driver for the direct medical costs in COVID-19 around the world [13–15,18,29–32].

4. Conclusions

The final systematic review of the costs associated with multi-morbidity treatment for SARS-CoV-2 patients will include a detailed summary of evidence in the form of figures and tables of the study characteristics for evidence-based identification. The output from the systematic review will uncover the gap between research that justifies the economic perspectival view of COVID-19 issues in medical fields.

5. Patents

This research will be registered in both the PROSPERO/COCHRANE database and the *IJERPH* database as intellectual property under the Creative Commons Attribution (CC BY) license. Therefore, this research article was obligated to adhere to Creative Commons Attribution (CC BY) license conduct and its regulation.

Supplementary Materials: The following supporting information can be downloaded at <https://www.mdpi.com/article/10.3390/ijerph192013157/s1>. Supplementary information regarding the PRISMA form for systematic reviews and meta-analyses are available as follows: Supplementary file S1: Cochrane Data Collection S.L.R. Form.docx; Supplementary file S2: Search strategy.docx; and Supplementary file S3: Prisma Checklist 2020.pdf.

Author Contributions: Conceptualization: A.A.; data collection: M.N.A.R. and M.I.M.N.; methodology: M.N.A.R., A.A., M.I.M.N., M.H.J. and M.D.; funding acquisition: A.A., M.H.J. and M.I.M.N.; supervision: A.A., M.H.J., T.N.R., M.I.M.N. and M.D.; writing—original draft: A.A. and M.N.A.R.; writing—review and editing: M.H.J., M.I.M.N., T.N.R. and M.D. All authors have read and agreed to the published version of the manuscript.

Funding: This evidence-based review protocol is a preliminary reference for the project “Developing Smart Hospital System to Determine Patient-Level Healthcare Resources Utilization and Real-Time Medical Expenditure for Efficient Health Budget Allocation in Providing Good Health and Wellbeing for Malaysians” under the Fundamental Research Grant Scheme (FRGS) funded by the Department of Higher Education, Ministry of Higher Education Malaysia (FRGS/1/2021/SSO/USIM/02/5; FRGS USIM Vote. USIM/FRGS/FPSK/KPT/50621), duration 2021–2024, and “Economic Assessment of The COVID-19 in Malaysia: From Patient’s Perspective” under Universiti Sains Islam Malaysia (USIM) Research Grant Scheme (PPPI/FPSK/0121/USIM/16321), duration 2021–2023. The funding body did not participate in the project’s design, collection, analysis, or interpretation of data; or manuscript writing.

Institutional Review Board Statement: The study was conducted under the Declaration of Helsinki and was approved by the Institutional Review Board (or Ethics Committee) of the Universiti Malaya Medical Centre (UMMC) (protocol code MRECID: 202133-9908 and RSCH-ID-2200441-K3T).

Informed Consent Statement: Not applicable.

Data Availability Statement: Not applicable.

Acknowledgments: Profound thanks are extended to the administrative staff of the Department of Research, Development, and Innovation, Universiti Malaya Medical Centre (UMMC).

Conflicts of Interest: The authors declare no conflict of interest. The funders had no role in the study's design; in the collection, analyses, or interpretation of data; in the writing of the manuscript; or in the decision to publish the results.

References

1. International Monetary Fund. *World Economic Outlook International Monetary Fund Update: Rising Caseloads, a Disrupted Recovery, and Higher Inflation*; International Monetary Fund: Washington, DC, USA, 2022; pp. 1–15. ISBN 978-1-61635-871-6.
2. World Bank. *World Bank National Accounts Data, and OECD National Accounts Data Files*; World Bank: Washington, DC, USA, 2022.
3. Al-Musaylh, M.S.; Deo, R.C.; Adamowski, J.F.; Li, Y. Short-term electricity demand forecasting with MARS, S.V.R. and ARIMA models using aggregated demand data in Queensland, Australia. *Adv. Eng. Inform.* **2018**, *35*, 1–16. [[CrossRef](#)]
4. Wang, Q.; Li, S.; Jiang, F. Uncovering the impact of the COVID-19 pandemic on energy consumption: New insight from difference between pandemic-free scenario and actual electricity consumption in China. *J. Clean. Prod.* **2021**, *313*, 127897. [[CrossRef](#)]
5. Janssen, M.; Chang, B.P.I.; Hristov, H.; Pravst, I.; Profeta, A.; Millard, J. Changes in Food Consumption During the COVID-19 Pandemic: Analysis of Consumer Survey Data From the First Lockdown Period in Denmark, Germany, and Slovenia. *Front. Nutr.* **2021**, *8*, 635859. [[CrossRef](#)]
6. Oecd. *The Territorial Impact of COVID-19: Managing the Crisis and Recovery across Levels of Government*; Oecd: Paris, France, 2021.
7. Di Crosta, A.; Ceccato, I.; Marchetti, D.; La Malva, P.; Maiella, R.; Cannito, L.; Cipi, M.; Mammarella, N.; Palumbo, R.; Verrocchio, M.C.; et al. Psychological factors and consumer behavior during the COVID-19 pandemic. *PLoS ONE* **2021**, *16*, e0256095. [[CrossRef](#)]
8. Zhai, P.; Ding, Y.; Wu, X.; Long, J.; Zhong, Y.; Li, Y. The epidemiology, diagnosis and treatment of COVID-19. *Int. J. Antimicrob. Agents* **2020**, *55*, 105955. [[CrossRef](#)]
9. Teymoori-Rad, M.; Samadzadeh, S.; Tabarraei, A.; Moradi, A.; Shahbaz, M.B.; Tahamtan, A. Ten challenging questions about SARS-CoV-2 and COVID-19. *Expert Rev. Respir. Med.* **2020**, *14*, 881–888. [[CrossRef](#)] [[PubMed](#)]
10. Wu, Z.; McGoogan, J.M. Characteristics of and Important Lessons from the Coronavirus Disease 2019 (COVID-19) Outbreak in China: Summary of a Report of 72314 Cases from the Chinese Center for Disease Control and Prevention. *JAMA J. Am. Med. Assoc.* **2020**, *323*, 1239–1242. [[CrossRef](#)] [[PubMed](#)]
11. Samadzadeh, S.; Masoudi, M.; Rastegar, M.; Salimi, V.; Shahbaz, M.B.; Tahamtan, A. COVID-19: Why does disease severity vary among individuals? *Respir. Med.* **2021**, *180*, 106356. [[CrossRef](#)]
12. Gao, C.; Zhao, Z.; Li, F.; Liu, J.L.; Xu, H.; Zeng, Y.; Yang, L.; Chen, J.; Lu, X.; Wang, C.; et al. The impact of individual lifestyle and status on the acquisition of COVID-19: A case-Control study. *PLoS ONE* **2020**, *15*, e0241540. [[CrossRef](#)]
13. Yin, T.; Li, Y.; Ying, Y.; Luo, Z. Prevalence of co-morbidity in Chinese patients with COVID-19: Systematic review and meta-analysis of risk factors. *BMC Infect. Dis.* **2021**, *21*, 200. [[CrossRef](#)]
14. Fathi, M.; Vakili, K.; Sayehmiri, F.; Mohamadkhani, A.; Hajiesmaeili, M.; Razaeei-Tavirani, M.; Eilami, O. The prognostic value of co-morbidity for the severity of COVID-19: A systematic review and meta-analysis study. *PLoS ONE* **2021**, *16*, e0246190. [[CrossRef](#)]
15. Thakur, B.; Dubey, P.; Benitez, J.; Torres, J.P.; Reddy, S.; Shokar, N.; Aung, K.; Mukherjee, D.; Dwivedi, A.K. A systematic review and meta-analysis of geographic differences in co-morbidities and associated severity and mortality among individuals with COVID-19. *Sci. Rep.* **2021**, *11*, 8562. [[CrossRef](#)]
16. Lai, A.G.; Pasea, L.; Banerjee, A.; Hall, G.; Denaxas, S.; Chang, W.H.; Katsoulis, M.; Williams, B.; Pillay, D.; Noursadeghi, M.; et al. Estimated impact of the COVID-19 pandemic on cancer services and excess 1-year mortality in people with cancer and multi-morbidity: Near real-time data on cancer care, cancer deaths and a population-based cohort study. *BMJ Open* **2020**, *10*, e043828. [[CrossRef](#)] [[PubMed](#)]
17. Rochmah, T.N.; Rahmawati, I.T.; Dahlui, M.; Budiarto, W.; Bilqis, N. Economic burden of stroke disease: A systematic review. *Int. J. Environ. Res. Public Health* **2021**, *18*, 7552. [[CrossRef](#)] [[PubMed](#)]
18. Gold, M.S.; Sehayek, D.; Gabrielli, S.; Zhang, X.; McCusker, C.; Ben-Shoshan, M. COVID-19 and co-morbidities: A systematic review and meta-analysis. *Postgrad. Med.* **2020**, *132*, 749–755. [[CrossRef](#)]
19. Page, M.J.; McKenzie, J.E.; Bossuyt, P.M.; Boutron, I.; Hoffmann, T.C.; Mulrow, C.D.; Shamseer, L.; Tetzlaff, J.M.; Akl, E.A.; Brennan, S.E.; et al. The PRISMA 2020 statement: An updated guideline for reporting systematic reviews. *BMJ* **2021**, *372*, n71. [[CrossRef](#)] [[PubMed](#)]
20. Bryant, J.; Boyes, A.; Jones, K.; Sanson-Fisher, R.; Carey, M.; Fry, R. Examining and addressing evidence-practice gaps in cancer care: A systematic review. *Implement. Sci.* **2014**, *9*, 37. [[CrossRef](#)]
21. Buchan, H. Gaps between best evidence and practice: Causes for concern. *Med. J. Aust.* **2004**, *180*, S48–S49. [[CrossRef](#)] [[PubMed](#)]
22. Shea, B.; Bouter, L.M.; Grimshaw, J.M.; Francis, D.; Ortiz, Z.; Wells, G.A.; Tugwell, P.S.; Boers, M.; Shea, B. Scope for Improvement in the Quality of Reporting of Systematic Reviews. From the Cochrane Musculoskeletal Group. *J. Rheumatol.* **2006**, *33*, 9–15.

23. Liberati, A.; Altman, D.G.; Tetzlaff, J.; Mulrow, C.; Gøtzsche, P.C.; Ioannidis, J.P.A.; Clarke, M.; Devereaux, P.J.; Kleijnen, J.; Moher, D. The PRISMA statement for reporting systematic reviews and meta-analyses of studies that evaluate healthcare interventions: Explanation and elaboration. *BMJ* **2009**, *339*, b2700. [[CrossRef](#)] [[PubMed](#)]
24. Isojarvi, J.; Wood, H.; Lefebvre, C.; Glanville, J. Challenges of identifying unpublished data from clinical trials: Getting the best out of clinical trials registers and other novel sources. *Res. Synth. Methods* **2018**, *9*, 561–578. [[CrossRef](#)]
25. Lefebvre, C.; Glanville, J.; Briscoe, S.; Littlewood, A.; Marshall, C.; Metzendorf, M.I.; Noel-Storr, A.; Rader, T.; Shokraneh, F.; Thomas, J.; et al. Searching for and selecting studies. In *Cochrane Handbook for Systematic Reviews of Interventions*, 6th ed.; Higgins, J.P.T., Thomas, J., Chandler, J., Cumpston, M., Li, T., Page, M.J., Welch, V.A., Eds.; Wiley & Sons: Hoboken, NJ, USA, 2019; Volume 6, pp. 67–107.
26. Azzeri, A.; Ching, G.H.; Jaafar, H.; Noor, M.I.M.; Razi, N.A.; Then, A.Y.H.; Suhaimi, J.; Kari, F.; Dahlui, M. A review of published literature regarding health issues of coastal communities in Sabah, Malaysia. *Int. J. Environ. Res. Public Health* **2020**, *17*, 1533. [[CrossRef](#)]
27. Zhao, M.-Z.; Zhao, C.; Tu, S.-S.; Wei, X.-X.; Shang, H.-C. Evaluating the methodology of studies conducted during the global COVID-19 pandemic: A systematic review of randomized controlled trials. *J. Integr. Med.* **2021**, *19*, 317–326. [[CrossRef](#)]
28. Harrison, J.K.; Reid, J.; Quinn, T.J.; Shenkin, S.D. Using quality assessment tools to critically appraise ageing research: A guide for clinicians. *Age Ageing* **2017**, *46*, 359–365. [[CrossRef](#)]
29. Ng, W.H.; Tiph, T.; Makoah, N.A.; Vermeulen, J.G.; Goedhals, D.; Sempa, J.B.; Burt, F.J.; Taylor, A.; Mahalingam, S. Co-morbidities in SARS-CoV-2 patients: A systematic review and meta-analysis. *mBio* **2021**, *12*, e03647-20. [[CrossRef](#)]
30. Yang, J.; Zheng, Y.; Gou, X.; Pu, K.; Chen, Z.; Guo, Q.; Ji, R.; Wang, H.; Wang, Y.; Zhou, Y. Prevalence of co-morbidities and its effects in coronavirus disease 2019 patients: A systematic review and meta-analysis. *Int. J. Infect. Dis.* **2020**, *94*, 91–95. [[CrossRef](#)]
31. Honardoost, M.; Janani, L.; Aghili, R.; Emami, Z.; Khamseh, M.E. The Association between Presence of Co-morbidities and COVID-19 Severity: A Systematic Review and Meta-Analysis. *Cerebrovasc. Dis.* **2021**, *50*, 132–140. [[CrossRef](#)]
32. Navickas, R.; Petric, V.-K.; Feigl, A.B.; Seychell, M. Multimorbidity: What Do We Know? What Should We Do? *J. Comorbidity* **2016**, *6*, 4–11. [[CrossRef](#)]