



**KOMISI ETIK PENELITIAN
FAKULTAS KEDOKTERAN HEWAN UNIVERSITAS AIRLANGGA
*Animal Care and Use Committee (ACUC)***

**KETERANGAN KELAIKAN ETIK
" ETHICAL CLEARANCE "**

No : 239-KE

**KOMISI ETIK PENELITIAN (ANIMAL CARE AND USE COMMITTEE)
FAKULTAS KEDOKTERAN HEWAN UNIVERSITAS AIRLANGGA SURABAYA,
TELAH MEMPELAJARI SECARA SEKSAMA RANCANGAN PENELITIAN YANG
DIUSULKAN, MAKA DENGAN INI MENYATAKAN BAHWA :**

PENELITIAN BERJUDUL : Quiscent Bone Marrow Mesenchymal Stem Cells
Melalui Hypoxia Precondition Sebagai Upaya
Mempertahankan Viabilitas Kultur Stem Cells

PENELITI UTAMA : Erma Safitri

**UNIT/LEMBAGA/TEMPAT
PENELITIAN** : Program Studi Ilmu Kedokteran
Fakultas Kedokteran Universitas Airlangga

DINYATAKAN : LAIK ETIK

Surabaya, 14 Januari 2013

Mengetahui,
Dekan FKH-Unair

Prof. Romziah Sidik, Ph.D., drh.
NIP. 195312161978062001

Ketua,

Dr. E. Bimo Aksono, M.Kes., Drh.
NIP. 196609201992031003



The 3rd Annual International Conference
in conjunction with
The 2nd International Conference on Multidisciplinary Research
Darussalam - Banda Aceh, Indonesia, October 2-4, 2013

Award this
Certificate
to

Erma Safitri

for having participated and contributed as
Presenter

in The International Conference
Given on the 4th October 2013 at Darussalam, Banda Aceh, Indonesia

Dr. Muchlisin Z.A., S.Pi, M.Sc
Chairman



Muhammad Bahi, Ph.D
Secretary



THE 3rd ANNUAL INTERNATIONAL CONFERENCE SYIAH KUALA UNIVERSITY
(AIC - UNSYIAH)
IN CONJUNCTION WITH
THE 2nd INTERNATIONAL CONFERENCE ON MULTIDISCIPLINARY RESEARCH
(ICMR)

AAC Dayan Dawood, Darussalam - Banda Aceh, Indonesia
October 2-4, 2013

LIFE SCIENCES CHAPTER



Editors:

Darmawi (Syiah Kuala University, Indonesia)
Siti Azizah M. Nor (Universiti Sains Malaysia, Malaysia)
Bradly J. Pusey (The University of Western Australia, Australia)
Zainal A. Muchlisin (Syiah Kuala University, Indonesia)
Gloria Shiela Edmilao Coyoca (Mindanao State University, Philippines)
Francis D. Sikoki (University of Port Harcourt, Nigeria)
Hasanuddin (Syiah Kuala University, Indonesia)

SYIAH KUALA UNIVERSITY PRESS
2013



ISSN : 2089-208X

EDITORIAL BOARD

Editor-in-Chief:

Dr. drh. Darmawi, M.Si. (Syiah Kuala University, Indonesia)

Editors:

Prof. Dr. Siti Azizah M. Nor (Universiti Sains Malaysia, Malaysia)
Prof. Dr. Bradly J. Pusey (The University of Western Australia, Australia)
Dr. Zainal A. Muchlisin (Syiah Kuala University, Indonesia)
Prof. Gloria Shiela Edmilao Coyoca (Philippines)
Prof. Francis D. Sikoki (Nigeria)
Prof. Dr. Ir. Hasanuddin (Syiah Kuala University, Indonesia)

INTERNATIONAL STEERING COMMITTEE

Prof. Dr. Ir. Samsul Rizal, M.Eng	(Syiah Kuala University, Indonesia)
Prof. Dr. Ir. Hasanuddin,	(Syiah Kuala University, Indonesia)
Prof. Dr. Syamsul Rizal	(Syiah Kuala University, Indonesia)
Prof. Dr. Abdul Wahab	(Universiti Sains Malaysia, Malaysia)
Dr. Andrew Baird	(James Cook University, Australia)
Dr. Chutima Tantikitti	(Prince Songkla University, Thailand)
Dr. Alfiansyah Yulianur	(Syiah Kuala University, Indonesia)
Eddy Nur Ilyas, SH, M.Hum	(Syiah Kuala University, Indonesia)
Dr. Rusli Yusuf, M.Pd	(Syiah Kuala University, Indonesia)
Prof. Dr. Darussman	(Syiah Kuala University, Indonesia)
Assoc. Prof. Dr. Habibah Hj Lateh	(Universiti Sains Malaysia, Malaysia)
Assoc. Prof. Dr. Mustafa Fadzil Farid Wajid	(Universiti Sains Malaysia, Malaysia)
Prof. Dr. Nurhayati	(Islamic University of North Sumatra, Indonesia)

TABLE OF CONTENTS

EDITORIAL BOARD		i
NOTICE OF DISCLAIMER		ii
MESSAGE FROM THE RECTOR		iii
MESSAGE FROM THE CHAIRMAN		iv
CONTENTS		v
AGRICULTURE		
1	Production optimization of clones slow starter IRR 42 application through stimulant etefon <i>Yayuk Purwaningrum, Junaidi and Lollie Agustina</i>	2
2	Utilization of thermophilic cellulolytic bacteria isolates and <i>Trichoderma harzianum</i> fungi on rice straw composting <i>Dini Mufriah and Rini Sulistiani</i>	9
3	Biochar residual effects and NPK fertilization on soil chemical properties and yield of rice (<i>Oryza sativa</i> L.) from third season planting <i>Mawardiana, Sufardi, Edi Husen</i>	15
4	Synthesis and characteristic bioadditive of rubber seed oil as low pour point biodiesel CPO <i>Misdawati, Muslih Nasution, Syafiruddin</i>	22
5	Response of growth and production of rice varieties caused by application amendment straw Bokashi and specific location of fertilization in salin soil <i>Rini Sulistiani, Dini Mufriah</i>	28
6	Maintaining viability of rubber shelled seed for storage of 16 days period by polyethylene glycol 6000 treatments <i>Charloq, Zulkifli Lubis, Tumpal H. Siregar, Sengly B. Damanik, Elisa J Husni M, Yazid A</i>	35
7	Optimization of latex production on rubber slow starter clones IRR 42 through application of multiple exploitation system <i>Murni Sari Rahayu and Nurhayati</i>	41
8	Isoflavone characters of three soybean varieties under drought stress with application of nitrogen sources <i>Yaya Hasanah, Tengku Chairun Nisa, Hapsoh, Hamidah Hanum</i>	48
9	Effect of indigenous mycorrhizal fungi on organic osmotic adjustment in soybean under salt stress <i>Nini Rahmawati, Rosmayati, Delvian, and Mohammad Basyuni</i>	55
10	Population dynamics of <i>Myzus persicae</i> (Sulzer) on intercropping potatoes with other plants on Karo Highland <i>Lamria Sidauruk, Darma Bakti, B.Sengli J. Damanik, and Retna Astuti Kuswardani</i>	63
11	The impact of differences planting date against morphological characters of some wheat genotype in Berastagi of Karo District <i>Dafni Mawar Tarigan, Rosmayati, Chairani Hanum, Lollie A. P. Putri</i>	68
12	Morphology and physiology characteristic of some varieties of rice under salinity stress <i>Wan Arfiani Barus, Abdul Rauf, B. Sengli J. Damanik and Rosmayati</i>	75
13	The effect of inclination bench and intermittent mist on the growth and production of Anthurium plant (<i>Anthurium andraeanum</i>) <i>Elly Kesumawati</i>	80

	increase the level of PIGF (Placental Growth Factor) Dewi Karlina Rusly, Kanadi Sumapraja, Rajuddin, Kartini Hasballah	
✓ 46	Use of <i>bee honey</i> as alternative medicine in protein energy deficiency R. Heru Prasetyo, Willy Sandhika, and Djoni Susanto	284
47	Self regulation of single mother having child with autism in Banda Aceh Sitti Wahyuni	288
48	Students' metacognitive skill in mathematics learning with cabri geometry II plus Rahmah Johar, Khalisna, Taufik Fuadi Abidin	294

VETERINARY		
49	The potential antioxidant activity of ethanolic extract of Aceh ant-plant (<i>Mymercodia sp</i>) on the free radical DPPH(1,1-Diphenyl-2-pikrylhidrazil) Suryawati, Frengki, Hijra Novia Suardi	301
50	Inhibitory of activity α -glucosidase from ethyl acetate and flavanal compound of the stem-bark of <i>Calophyllum mcrophyllum</i> Scheff Frengki, Jamilah Abbas and Surya Wati	306
51	The effect of ethanol extract <i>Coleus ambonicus</i> L on antibody titer of white rats (<i>Rattus norvegicus</i>) trough SRBC as antigen Melva Silitonga and Eriana Situmorang	312
52	Asses humoral immunity of wistar strains rats (<i>Rattus norvegicus</i> L.) which given ethanol extract-buas buas (<i>Premna pubescens</i> Blume) leaves Martina Restuati and Restianna Eliawaty Simanjuntak	319
52	Analysis of centelloside of pegagan (<i>Centella asiatica</i>) Noverita Sprinse Vinolina, Justin A. Napitupulu, Marline Nainggolan and Luthfi A.M. Siregar	324
53	Didekilketon compounds from the leaves of <i>Artocarpus camansi</i> Blanco Rosnani Nasution, Marianne	329
54	Microbial contamination on beef trade in wet markets of Lambaro, Sigli, and Meureudu Razali, Nurliana, and T. Reza Ferasyi	334
✓ 55	Utilization of viable bone marrow derivat stem cells through an adaption in low oxigen tension as an attempt to increase cellular transplantation efficacy for spermatogenesis process Erma Safitri, Suzanita Utama, Candra Bumi, Sri Wigati Mardi Mulyani, Helen, Purwati, R. Heru Prasetyo, Mas'ud Hariadi, Fedik Abdul Rantam	338
56	Histopathological Changes in Intestine of Chicken (<i>Gallus domesticus</i>) Infected Naturally by <i>Ascaridia galli</i> Ummu Balqis, Muhammad Hambal, Darmawi, Cut S. Utami	343
57	Isolation of enterobacteriaceae bacteria species from feces of Sumatran Orangutans (<i>Pongo abelii</i>) Darmawi, Erdiansyah Rahmi, Maryulia Dewi, Joharsyah Hutabarat, Mahdi Abrar and Fakhrurrazi	349
58	Supplementation of tempeh extract for improving quality of bone in premenopausal conditions using rats as animal models Safrida, Nastiti Kusumorini, Wasmen Manalu, Hera Maheshwari	355
60	Infiltration of inflammatory cells in intestines of chickens infected naturally by <i>Ascaridia galli</i> Muhammad Hambal, Ummu Balqis, Darmawi, Cut S. Utami	362

Utilization of viable bone marrow derivat stem cells through an adaption in low oxigen tension as an attempt to increase cellular transplantation efficacy for spermatogenesis process

Erma Safitri^{1,2}, Suzanita Utama¹, Candra Bumi^{2,3}, Sri Wigati Mardi Mulyani^{2,4}, Helen², Purwati^{2,5}, R. Heru Prasetyo⁶, Mas'ud Hariadi¹, Fedik Abdul Rantam²

¹Department of Veterinary Reproduction Faculty of Veterinary Med, Airlangga University

²Stem Cells Research Divison of Institute Tropical Disease (ITD), Airlangga University

³Department of Epidemiology and Biostatistics Public Health, Jember University

⁴Departement of DentoMaxillo Facial Radiologi Faculty of Dentistry, Airlangga University

⁵Internal Medicine Department of RSUD Dr. Soetomo Surabaya

⁶Departement of Parasitology School of Medicine, Airlangga University

⁷Department of Veterinary Microbiologi and Virologi Faculty of Vet. Med, Airlangga University

Corresponding Author: rma_fispro@yahoo.com

Abstract. Cellular transplantation using stem cells provides very promising solutions in the regeneration and repairment of cells that have experienced degeneration where recovery through medical or surgical intervention is impossible. However, the very low viability of transplanted stem cells limits the transplantation efficacy. The aim of this research was to obtain viable bone marrow derived stem cells by an adaptation treatment in a low oxygen tensioned in vitro culture. Low oxygen tension adaptation was adjusted to the niche of the stem cells in vivo. In this study, in vitro culture of stem cells in 1% oxygen was compared to those of the conventional culture in 21 % oxygen. Results showed that under 1% oxygen tension cell proliferation was slower with larger or rounded triangle shaped cells, and senescence or dead cells was low. Meanwhile under 21 % oxygen tension cell proliferation was two fold faster with flattened and slender cells, and senescence or dead cells was higher. In conclusion, conventional in vitro culture under 21 % oxygen caused cell aging (senescence) and rapid cell death, therefore the transplanted cells were not viable.

Key words: Stem cells, bone marrow, low oxygen tension, viability.

Introduction

Infertility case particularly oligospermy is the most frequent case in male reproductive disorder. In the most severe stage, this case could be followed with mono- as well as bilateral pathological changes of both testis (Hafez, 2000; Schlatt et al., 2002). Unfortunately regeneration that is possible to occur, even though in a long period of time, could only succeed if there are remaining normal spermatogonia cells in the seminiferous tubules. However the regeneration ability becomes very limited to replace the degenerating cells.

Cell therapy using bone marrow derived stem cells provides a very promising solution in the case of regenerating and restoring germ cells and testis tissues undergoing degeneration where recovering through medical or surgical intervention is impossible (Blanchard et al., 2008). However, the low viability of the transplanted stem cell in degenerative testis to differentiate into spermatogonia cells causes the limitation of the efficacy of this therapy (Kenichiro et al., 2005; Tang et al., 2005). A study on stem cell by Geng (2003) revealed that 99 % of the stem cells injected died four days after

injection. This indicates that microenvironment in the degenerative tissue or body organs is not conducive for the stem cells' survival. The estimated mechanism accounted for the decreasing function of stem cells are the high amount of the stem cells undergoing senescence and death along with the decreasing capacity to adhere and differentiate. Therefore the increase of the implanted stem cells' survival became important to increase the efficacy of stem cell therapy.

Therefore adaptation of the stem cells during in vitro culture adjusted to the in vivo niche of the stem cell need to be conducted in an attempt to increase viability at the time of transplantation to oligospermia patient through the low oxygen tension preconditioning during culture.

Material and methods

Procedure bone marrow derived stem cell isolation & culture (Rantam et al., 2009)

Rabbit was anesthetized at the coxigea area. Stem cell was harvested by an aspiration of bone marrow at the middle of femur bone below the condylus. Aspirate was placed in hepanized tubes. Sample in tube was placed in thermos maintained at 4°C during transportation to laboratory to be processed.

Aspirate was transferred into 15 ml sterile blue capped tubes then tube was rinsed twice with 5 ml sterile Phosphate Buffered Saline (PBS). PBS was topped up to a total volume of 8 ml. Diluted sample was loaded over a same volume of Ficoll in a separate 15 ml tube. Centrifugation was performed at 1600 rpm for 15 minutes at room temperature. After centrifugation cells were collected from Ficoll-PBS interface using sterile pasteur pipette and transferred into 15 ml tube. Cells were then resuspended in PBS up to a total volume of 15 ml. Tube was inverted gently 5 times to homogenize the suspension. Tube was then centrifuged again at 1600 rpm for 10 minutes. Supernatant and floating cells were discarded and cell pellet was resuspended in 6 ml of α MEM prior to incubation. Cells were plated in 10 cm² plates and incubated at 37°C in a humidified atmosphere containing 5% CO₂ for 24 hours to let the cells adhere. After 24 hours, media and non-adherent cells were discarded. Adherent cells were rinsed twice using 5 ml of PBS. Ten ml of fresh α MEM was then added into dish and the dish was returned into the incubator. Culture was observed daily under an inverted microscope. Every 4 days medium was changed, preceded by a rinse using 10 ml PBS then 10 ml of fresh α MEM were replaced. Culture was continued until approximately 75-80% confluence was attained. After confluence, cells were passaged into several dishes for subculture. Passage was conducted 3 times, then cells were divided into two low oxygen tension treatments of 1% in hypoxia chamber inside 5% CO₂ incubator while another treatment was the use of 21% oxygen (conventional culture).

Results and discussions

Results of this research showed that under low oxygen tension of 1%, cells proliferated slower, cells looked bigger and round, formed triangle shape with fewer cells undergoing senescence or death; meanwhile under 21% oxygen tension cells proliferated twice as fast with flat and slender shaped cells with more cells undergoing senescence or even dead (Figure 1-6).

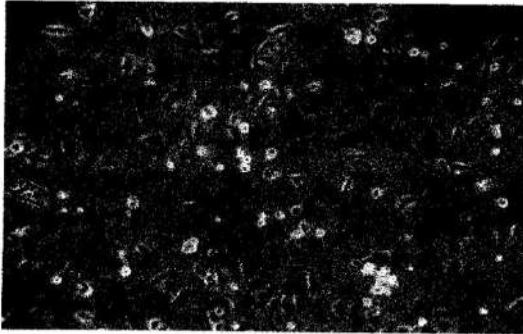


Figure 1. Two hours after incubation under 1% O₂. Proliferation was slower, cells were enlarged, rounded and formed triangle shapes (red arrow head) with fewer cells undergoing senescence and dead (black arrow head); (400 x magnification).

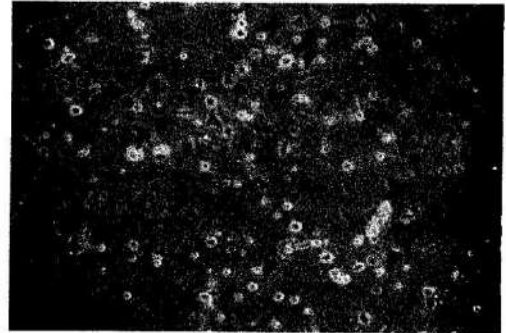


Figure 2. Two hours after incubation under conventional 21% O₂ tension. Proliferation was faster, cells were flat and slender (red arrow head) with more cells undergoing senescence and dead (black arrow head); (400 x magnification).

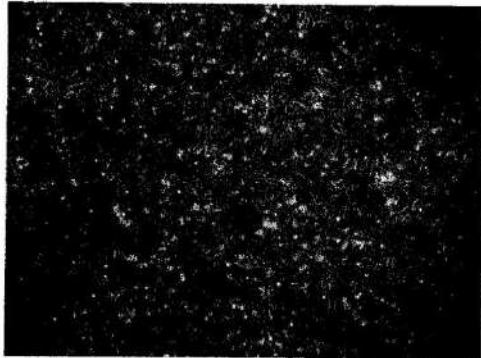


Figure 3. One day after incubation under low 1% O₂. Proliferation was slower and cells were larger; (400 x magnification).

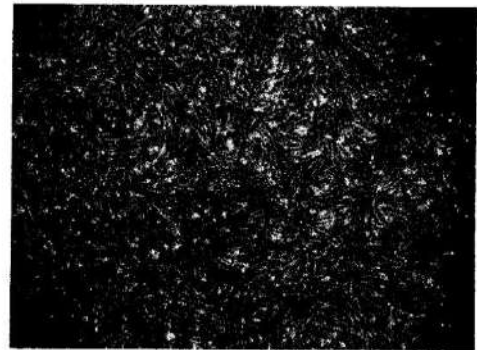


Figure 4. One day after incubation under conventional 21 % O₂; Proliferation was faster, cells were flat, slender and elongated; (400x magnification).

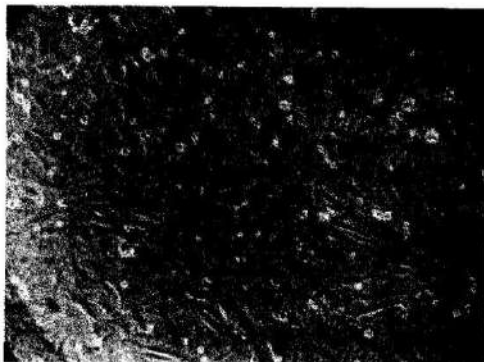


Figure 5. Two days after incubation under low 1 % O₂. Proliferation was slower and cells were larger; (1000 x magnification).

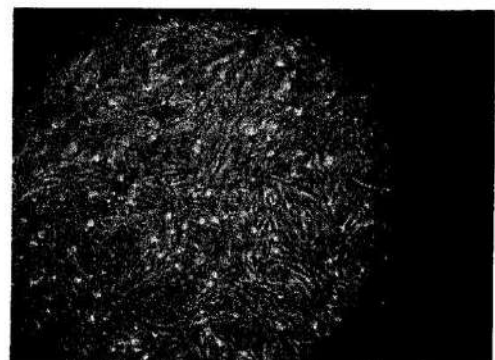


Figure 6. Two days after incubation under conventional 21 % O₂. Proliferation was faster, cells were small, flat and confluency was rapidly attained ; (1000 x magnification).

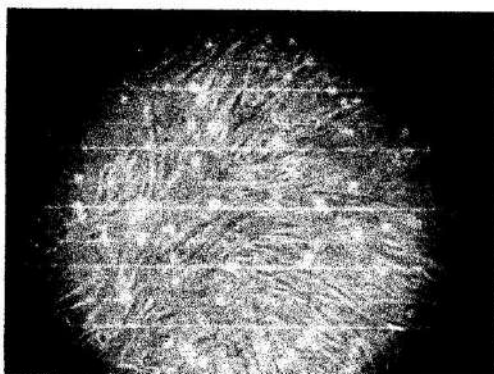


Figure 7. Three days after incubation under low 1 % O₂. Proliferation was slower and cells were larger; (1000 x magnification).

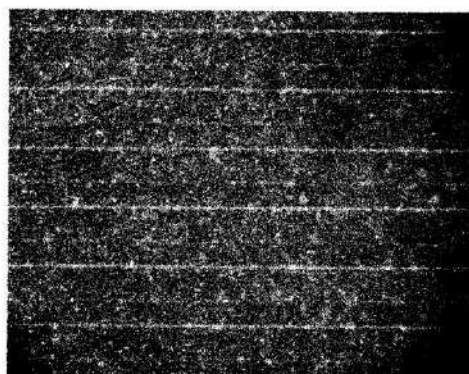


Figure 8. Three days after incubation under conventional 21 % O₂. Proliferation was faster, cells were small, flat and confluency was rapidly attained; (1000 x magnification).

From the result of this research it could be explained as follows: that low 1% oxygen tension applied affected HIF-1 α release from van Houppellindau (vPL) and accumulated in nucleus. The high level of HIF-1 α would inhibit Reactive Oxygen Species (ROS) that acted as free radical. The inhibition of ROS would inhibit the expression of protein genes P53 and P21. Therefore, cell cycle arrest genes were sensitized, which ended up with slow proliferation and maintenance of stem cells. This maintenance was also supported by the reduced ROS by the role of HIF-1 α therefore p53 gene expression was inhibited. The inhibition of p53 gene expression caused an inhibition of the opening of mitochondrial membrane pore. Therefore, cytochrome C that acted as apoptotic protease activating factor-1 (APAF-1) caused inhibition of the release of various caspases (Caspase 9 and Caspase 3) as apoptotic cascade. The inhibition of P53, cytochrome C and caspases would cause the inhibition of cell death of the cultured stem cells. Meanwhile, the decreased P21 caused an inhibition of the active cycling cell which prevented cell senescence process from happening. The inhibition of cell death and senescence caused the stem cell proliferation to become slower and also making the speed of cell culture reaching confluency slower.

Conclusions

From the research results, it could be concluded that conventional in vitro culture using 21% O₂ caused cells to undergo senescence and die faster. Therefore, the transplanted stem cells were not viable. Meanwhile, in the use of low oxygen tension at 1% concentration cells were more viable because of the slower senescence and did not die.

References

- Cavallini G. 2006. Male idiopathic oligoasthenoteratozoospermia. *Asian J Androl.* 2006. 8(2): 143-157. doi: 10.1111/j.1745-7262.2006.00123.x (<http://dx.doi.org/10.1111%2Fj.1745-7262.2006.00123.x>). PMID 16491265 (<http://www.ncbi.nlm.nih.gov/pubmed/16491265>)

- Geng YJ. 2003. Molecular Mechanisms for Cardiovascular Stem Cell Apoptosis and Growth in the Hearts with Atherosclerotic Coronary Disease and Ischemic Heart Failure. *Science. Ann NY Acad* 1010:687-697.
- Hamanaka RB and NS Chandel. 2010. Review. Mitochondrial Reactive Oxygen Species Regulate Cellular Signaling and Dictate Biological Outcomes. 0968-0004/\$ - see front matter ©2010 Elsevier Ltd. All rights reserved. DOI: 10.1016/j.tibs.2010.04.002. *Trends in Biochemical Sciences* 35(2010). 505-513.
- Rantam FA, Ferdiansyah, Nasronudin and Purwati. 2009. *Stem Cell Exploration. Methods of Isolation and Culture*. First Ed. Airlangga University Press. Surabaya
- Suda T, K Takubo, and GL Semenza. 2011. Cell Stem Cell Review. Metabolic Regulation of Hematopoietic Stem Cells in Hypoxic Niche. DOI: 10.1016/j.stem.2011.09.010. *Cell Stem Cell* 9, Oct 7, 2011 ©2011 Elsevier Inc. 296-310.
- Takubo K, N Goda, W Yamada, H Iriuchishima, E Ikeda, Y Kubota, S Haruko, RS Johnson, A Hirao, M Suematsu and T Suda. 2010. Regulation of the HIF-1 Level is Essential for Hematopoietic Stem Cells. *Cell Stem Cell* 7. Article. Sept 3, 2010 ©2010 Elsevier Inc. 391-402.