

Journal of Physics

Conference Series

The 2nd International Seminar on Smart
Molecule of Natural Resources
(ISSMART 2020)

1665

Volume 1665

**August 25 (Tuesday) to 26 (Wednesday), 2020
Padang, Indonesia**

Editor

Prof. James Ketudat
Prof. Fahrul Zaman Huyop
Prof. Takeshi Ohta
Prof. Mikio Nishizawa
Prof. Fatchiyah

The Open Access Journal for Conference Proceedings

<https://iopscience.iop.org/issue/1742-6596/1665/1>



ISSMART 2020

PROCEEDING BOOK

The 2nd International Seminar on Smart Molecule
of Natural Resources (ISSMART) 2020

Smart Molecule from Natural Resources for Global
Pandemic Diseases

Malang, Indonesia | August 25-26, 2020



Organized by:



website : <http://issmart.ub.ac.id/>
e-mail : issmart@ub.ac.id



Content from this work may be used under the terms of the [Creative Commons Attribution 3.0 licence](https://creativecommons.org/licenses/by/3.0/). Any further distribution of this work must maintain attribution to the author(s) and the title of the work, journal citation and DOI.

PREFACE

Conference in a brief

The ISSMART 2020 runs for 2 days, 25-26 August 2020, as a virtual conference. This year theme is "Smart Molecules from Natural Resources for Global Pandemic Diseases", which covers a broad range of research field with various scopes of:

- Biochemistry & Molecular Biology
- Molecular Sciences
- Biomedical Engineering
- Neurosciences
- Nutrigenomics & Nutrigenetics

This particular theme is intended to promote recent advances in the field of natural genetic resources, importantly to address important issue that is outbreak of the corona virus.

This international forum also provides a platform where national and international academia or researchers, policy makers, and other stakeholders to translate technology, exchange ideas, and help stimulate multidisciplinary international collaborations in a convergent manner for shaping a worldwide sustainable development.

Around 70 people registered to this seminar. They consist of 45 presenting participants, about 30 non-presenting participants, and 5 keynote speakers.

Keynote speakers:

- Prof James Ketudat Cairns, from SUT, Thailand
- Prof Fahrul Zaman Huyop, from UTM, Malaysia
- Dr. Saki Shirako, from Ritsumeikan University, Japan
- Prof Dian Handayani, from Universitas Brawijaya, Indonesia
- Prof Fatchiyah, from Universitas Brawijaya, Indonesia

LIST OF COMMITTEES

Steering Committee

Rector Universitas Brawijaya

Head of LPPM Universitas Brawijaya

Organizing Committee

BaSIC 2019 Chair : Anna Safitri, PhD

Secretary : Dewi Ratih Tirto Sari, M.Si.

Finance : Rista Nikmatu Rohmah, M.Si

Secretariat : dr. Nia Kurnianingsih, M. Biomed.

Cleonara Yanuar Dini, M.Sc.

Lidwina Faraline Tripsila, M.Si.

Sisca Fajriani, MP

Program and Scientific Committee: Prof Fatchiyah, Ph.D

Prof. Dian Handayani, Ph.D

Eko Suyanto, M.Sc.

Documentation : Akbar Farid

International Scientific Committee/Editorial of Proceeding

- **Prof James Ketudat-Cairns**

Suranaree University of Technology, Thailand

- **Prof. Fahrul Zaman Huyop**

Malaysia University of Technology, Malaysia

- **Prof Takeshi Ohta**

Kyoto University, Japan

- **Prof Mikio Nishizawa**

Ritsumeikan University, Japan

- **Prof Fatchiyah**

Universitas Brawijaya, Japan

Table of contents

Volume 1665

2020

[Previous issue](#) [Next issue](#)

The 2nd International Seminar on Smart Molecule of Natural Resources (ISSMART) 2020 25-26 August 2020, Malang, Indonesia

Accepted papers received: 01 October 2020

Published online: 20 October 2020

[Open all abstracts](#)

Preface

OPEN ACCESS

[Preface](#)

011001

[Open abstract](#) [View article](#) [PDF](#)

OPEN ACCESS

[Peer review declaration](#)

011002

[Open abstract](#) [View article](#) [PDF](#)

Papers

OPEN ACCESS

[Screening Anti-MRSA Activities of Indigenous Microbes and Prediction of The Biosynthetic Gene Clusters](#)

012001

A Asnani, R Amaliyah and A Yuniaty

[Open abstract](#) [View article](#) [PDF](#)

OPEN ACCESS

[Genetic differences and population structure of spotted barb \(cyprinidae\) collected from three rivers in Java Island](#)

012002

S S Astuti, A M Hariati, W E Kusuma and D G R Wiadnya

[Open abstract](#) [View article](#) [PDF](#)

OPEN ACCESS

[Smart Development of Big Data App for Determining the Modelling of Covid-19 Medicinal Compounds Using Deep AI Core Engine System](#)

012003

I Cholissodin, S Sutrisno, N Santoso, A A Soebroto, N Hidayat and N T Rochman

[Open abstract](#) [View article](#) [PDF](#)

OPEN ACCESS

[In vitro and In silico Analysis of Pomegranate \(*Punica granatum* L.\) Fruit Powder as Pancreatic Lipase and \$\alpha\$ -Amylase Inhibitor](#)

012004

Andi Alfira Ratna F Dewi, Muntholib and Subandi

[Open abstract](#) [View article](#) [PDF](#)

OPEN ACCESS

[The cyanidin-3-O-glucoside of Black Rice inhibits the interaction of HMG-CoA and HMG-CoA Reductase: three-and two-dimension structure](#)

012005

Fatchiyah Fatchiyah, Hazna Noor Meidinna and Eko Suyanto

[Open abstract](#) [View article](#) [PDF](#)

Relationship between of Insuline Like growth Factor-2 Gene and Growth Traits in Crosses of Indonesian Local Chicken

H Nurcahya, E Sinaga, S Darwati and I Khaerunissa

[Open abstract](#)

[View article](#)

[PDF](#)

OPEN ACCESS

Hypolipidemic Effect of Avocado Peel (*Persea americana* Mill.) Extract in Rats with Dyslipidemia

012016

R S Brajawikalpa, U Nidhamuddin and I M Loebis

[Open abstract](#)

[View article](#)

[PDF](#)

OPEN ACCESS

Molecular Study of Root Colonization and Diversity of Arbuscular Mycorrhizal Fungi (AMF) Associated with Lesser Yam (*Dioscorea esculenta*)

012017

I Nuryana, J Widada and S Subandiyah

[Open abstract](#)

[View article](#)

[PDF](#)

OPEN ACCESS

The Two Peptides Fragments of Goat Milk CSN1S2 Protein Blocked Insulin Receptor to Interact Ligand: *In Silico* Study

012018

Kadita Octavia Pertiwi and Fatchiyah Fatchiyah

[Open abstract](#)

[View article](#)

[PDF](#)

OPEN ACCESS

Nutrient content and endemic red fruit oil (*Pandanus austrosinensis*) fatty acid profile in Papua Indonesia

012019

A. W. A. Renyaan, E Suprayitno, Aulani'am and A M Hariati

[Open abstract](#)

[View article](#)

[PDF](#)

OPEN ACCESS

Communities Structure of Fish in Some Mangrove Ecosystem as a Result of the Restoration in Southern Beach of Malang, East Java Indonesia

012020

Irham Ahsanul Ridlo, Nia Kurniawan and Catur Retnaningdyah

[Open abstract](#)

[View article](#)

[PDF](#)

OPEN ACCESS

Determination of optimum conditions to produce stearoyl glycerol enzymatically

012021

Anna Roosdiana, Chanif Mahdi, Sutrisno and Zahza Fatika Rahma

[Open abstract](#)

[View article](#)

[PDF](#)

OPEN ACCESS

Metabolomic Profiles of *Curcuma longa* L and *Cosmos caudatus* Extracts and Their *In-Silico* Anti-cancer Activity

012022

Anna Safitri, Amila Safira Putri, Tri Dewi Octavianty and Dewi Ratih Tirto Sari

[Open abstract](#)

[View article](#)

[PDF](#)

OPEN ACCESS

Effect of Ethanolic Extract of *Cayratia trifolia* on Histologically Kidney Mouse Model

012023

Djoko Santoso, I Ketut Sudiana, Anny Setijo Rahayu and Muchammad Yunus

[Open abstract](#)

[View article](#)

[PDF](#)

OPEN ACCESS

012024

PAPER • OPEN ACCESS

Effect of Ethanolic Extract of *Cayratia trifolia* on Histologically Kidney Mouse Model

To cite this article: Djoko Santoso *et al* 2020 *J. Phys.: Conf. Ser.* **1665** 012023

View the [article online](#) for updates and enhancements.

You may also like

- [Antioxidant and antibacterial activity of ethanolic extract from *Ulva sp.*](#)
M P Wulanjati, A W Indrianingsih, C Darsih *et al.*
- [Phytoconstituents Investigation on the Ethanolic Extract of *Azadirachta indica var. Indonesian and Philippines*](#)
R Raissa, A Safitri, M A G Beltran *et al.*
- [The Potency of Ethanolic Extract of *Sauropus androgynus \(L.\) Merr Leaves as Therapeutic herbal of Rats \(Rattus norvegicus\) Peptic Ulcer Model Induced by Aspirin*](#)
A Roosdiana, S A Yudandi and A Erika



The advertisement features a dark teal background. On the left, the ECS logo is displayed above the text 'The Electrochemical Society Advancing solid state & electrochemical science & technology'. Below this, it announces the '242nd ECS Meeting' from Oct 9 – 13, 2022 in Atlanta, GA, US, highlighting 'Presenting more than 2,400 technical abstracts in 50 symposia'. In the center, a portrait of M. Stanley Whittingham is shown next to a Nobel Prize medal. To the right, text describes the 'ECS Plenary Lecture featuring M. Stanley Whittingham, Binghamton University Nobel Laureate – 2019 Nobel Prize in Chemistry'. A 'Register now!' button with a checkmark icon is positioned above a photograph of a large audience. At the bottom right, there is an image of a person holding a futuristic device with glowing icons.

Effect of Ethanolic Extract of *Cayratia trifolia* on Histologically Kidney Mouse Model

Djoko Santoso^{1*}, I Ketut Sudiana², Anny Setijo Rahayu³ and Muchammad Yunus⁴

¹Department of Internal Medicine, Faculty of Medicine, Universitas Airlangga

^{2,3}Department of Anatomic Pathology, Faculty of Medicine, Universitas Airlangga

⁴Department of Veterinary Parasitology, Faculty of Veterinary Medicine, Universitas Airlangga

*Corresponding author email: djoko-santoso@fk.unair.ac.id

Abstract. This study was conducted to determine the effect of *Cayratia trifolia* ethanolic extract on histological mouse kidney models. A total of 12 adult male Balb/c mice were randomly divided into two groups, comprising six mice in each group. The first group of 6 mice provided as the control group and received 25 ml/kg BW orally sodium carboxymethylcellulose during 6 days. The second group, 6 mice was administered 50 mg/kg BW of *C. trifolia* ethanolic extract in sodium carboxymethylcellulose orally during 6 days. The present study, we have performed histological kidney mice evaluation after 6 days of *C. trifolia* ethanolic extract administration. The histological mice kidney was quantified in term of tubular epithelium, glomerular and focal mononuclear infiltrate. The effect of administration of *C. trifolia* ethanolic extract on histological kidney of mice appeared normal tubular morphology in cortical and medullary regions of kidney in administered *C. trifolia* ethanolic extract mice, there was no kidney change histologically showed normal architecture of the glomerulus and tubules, while in control mice group, kidney histologically first marked with mononuclear cell infiltration, tubular necrosis, glomerular congestion and hyaline casts. The study results exhibit that relatively sufficient in histopathological changes in the corticomedullary junction of mice kidneys, including tubular epithelial damage, tubular dilatation and intratubular cast formation.

Keywords: Balb/c mice, *C. trifolia* ethanolic extract, kidney

1. Introduction

Several natural substances are possessed the medicinal plants, one of those medicinal plants is *C. trifolia*. A large number of compounds contained in *C. trifolia* plants include bioactive compounds such as yellow wax oil, steroids, terpenoids, flavonoids, and tannins [1]. Phenols, flavonoids, and tannins are gaining attention because they have natural qualities in preventing disease, promoting health, and anti-aging substances as natural antioxidants [2]. Antioxidants can function to reduce oxidative damage caused by free radicals and reactive oxygen species under conditions of oxidative stress in humans [3]. Several parts of *C. trifolia* such as stems, leaves, and roots are reported to have hydrocyanic acid and delphinidin. Leaves of *C. trifolia* have been reported to contain several flavonoids such as cyanidine [1].



Content from this work may be used under the terms of the [Creative Commons Attribution 3.0 licence](https://creativecommons.org/licenses/by/3.0/). Any further distribution of this work must maintain attribution to the author(s) and the title of the work, journal citation and DOI.

Kaempferol, myricetin, quercetin, triterpenes and epifriedelanol are contained the aerial parts of the plant; the seeds and fruits contain cyanogenic compounds; and the leaves also contain stilbenes such as piceid, resveratrol, viniferin and ampelopsin [4].

Patients with diabetes in order to check sugar levels of blood traditionally can be given infusion of seeds along with extract of tubers orally. In several cases such as diuretics, tumors, neuralgia and splenopathy can be medicated to used the whole plant [5]. The presence of alkaloids and flavonoids in the ethanolic extract of *C. trifolia* can be used for good free radicals scavenging activity. Antioxidants that contained the ethanolic extract of *C. trifolia* exhibits a good free radical scavenging activity [6]. Many of the properties of this plant have been reported in previous studies such as antibacterial, antifungal, antiprotozoal, antiviral, hypoglycemic, anticancer, antioxidant, anti-inflammatory and diuretic properties. This study aims to know indirect effect of antioxidants and anti free radical scavenging activity of the *C. trifolia* ethanolic extract by inducing sodium carboxymethylcellulose that can influence histologically kidney feature in mouse model.

2. Materials and Methods

A total of 12 adult male Balb/c mice were randomly divided into two groups, comprising six mice in each group. The first group of 6 mice provided as the control group and received 25 ml/kg BW orally sodium carboxymethylcellulose during 6 days. The second group, 6 mice was administered 50 mg/kg BW of *C. trifolia* ethanolic extract in sodium carboxymethylcellulose orally during 6 days. The present study, we have performed histological kidney mice evaluation after 6 days of *C. trifolia* ethanolic extract administration. The histological kidney mice was quantified in term of tubular epithelium, glomerular and focal mononuclear infiltrate.

3. Results and Discussion

In *C. trifolia* ethanolic extract administration mice group (Group 2), relatively well morphology of tubular was appeared in cortical and medullary regions of kidney in that mice group, there was no kidney injury histologically with normal architecture of the glomerulus and tubules. While in sodium carboxymethylcellulose administration mice group (without *C. trifolia* ethanolic extract, Group 1) kidney injury histologically first marked with mononuclear cell infiltration, tubular necrosis, glomerular congestion and hyaline casts in the lumen of tubular (Table 1 and Figure 1).

Table 1. Scoring of the histological features of the mice kidney tissue sections in effect of Ethanolic Extract of *C. trifolia* and sodium carboxymethylcellulose induced nephrotoxicity

Histopathological features	Group 1	Group 2
Glomerular congestion	++	+
Tubular necrosis	+++	+
Tubular casts (hyaline)	++	+

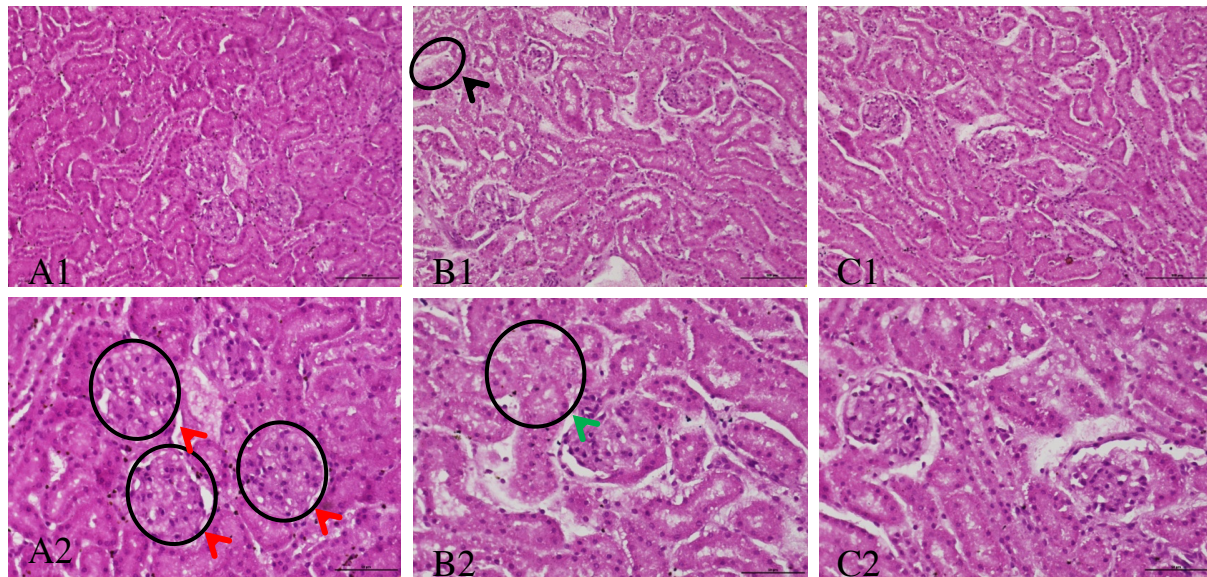


Figure 1. The kidney tissue in group 1 showing glomerular congestion, mononuclear cell infiltration, tubular necrosis and hyaline casts, Group 2 occurred increasing quality architecture of kidney tissue [H&E, A1, B1, C1 (x200); A2, B2, C2 (x400)]. black head arrow, casts hyaline; green head arrow, damaged tubular cells; red head arrow, glomerular congestion.

The use of pro-inflammatory agent is single as well as multiple often generate impact, one of which is nephrotoxicity. Various responses of the use of that agent is important to know including frequency of administration, the dosage and cumulative dose of agent, response of animals is different severity can be occurred acute (early) and chronic (advanced) kidney injury [7]. It appears that the use of carboxymethylcellulose can trigger increased production of pro-inflammatory cytokines, reactive oxygen species, and proteolytic enzymes.

Previous studies of chronic wound environments demonstrated ongoing inflammation with matrix degradation and other accompanying sequelae [8]. Some conditions including serious side effects such as risk of kidney failure, gastrointestinal damage, and prolonged bleeding time due to impaired coagulation often result from the use of proinflammatory agents. [9]. For this reason, nonpharmacological strategies and topical agents to achieve optimal to reduce stimulation of inflammation. Administration of sodium carboxymethylcellulose resulted in histopathological changes at the corticomedullary junction of the mouse kidneys, including tubular epithelial damage, tubular dilatation and formation of casts in the tubular lumen (Figure 1).

Nephropathy in rodents is histologically characterized by degenerative changes in the proximal tubule consisting of hydropic degeneration, pyknotic nuclei, increased cytoplasmic vesicles, cytoplasmic vacuolization, loss of brush border, necrosis and apoptosis of tubular cells, and desquamation of necrotic epithelial cells of tubular lumens and forming hyaline casts. [10]. The effect of the use of sodium carboxymethylcellulose occurs through increased oxidative stress, tubulo-interstitial inflammation and apoptosis. The results of the present study indicated that sodium carboxymethylcellulose may induce free radical production that could cause tubular damage due to sodium carboxymethylcellulose intoxicated animals, which was resulted through the increase of oxidative stress, inflammation and apoptosis in the kidneys [11]. One of the most commonly used strategies is saline hydration and forced diuresis. Despite saline hydration and forced diuresis, nephrotoxicity is in the range of 20–30% [12].

4. Conclusion

Cayratia trifolia ethanolic extract supplementation may reduce sodium carboxymethylcellulose induced nephrotoxicity. The study results demonstrated that relatively sufficient in histopathological changes in the corticomedullary junction of the mice kidney, including damage to the tubular epithelium, tubular dilatation and formation of an intratubular cast. We suggest that the *Cayratia trifolia* Ethanolic extract modulates oxidative stress in the kidney.

Acknowledgement

This study was funded by Directorate of Higher Education, Ministry of Education and Culture of the Republic of Indonesia, Excellence Research Grant of Higher Education for a research contract number: 560/UN3.14/PT/2020.

REFERENCES

- [1] Kumar D, Gupta J, Kumar S, Arya R, Kumar T and Gupta A 2012 Pharmacognostic evaluation of *Cayratia trifolia* (Linn.) leaf. *Asian Pac J Trop Biomed* 2: 6-10.
- [2] Ozyurt D, Ozturk B D and Apak R. 2004 Determination of total flavonoid content of *Urtica dioica* L. by a new method. *Proceedings book, Turkey*.
- [3] Sowmya S, Chella P P, Anusooriya P, Vidya B, Pratibha P and Gopalakrishnan V K 2015 *In vitro* Antioxidant Activity, *In vivo* Skin Irritation Studies and HPTLC Analysis of *Cayratia trifolia* (L.) Domin. *IJPTR* 7(1): 1-9.
- [4] Kumar D, Kumar S, Gupta J, Arya R and Gupta A 2011 A review on chemical and biological properties of *Cayratia trifolia* Linn. (Vitaceae). *Pharmacogn. Rev.* 5: 184–188.
- [5] Pulliah T 2006 *Encyclopedia of world medical plant*. New Delhi, Regency Publication, 492.
- [6] Valko M, Leibfritz D, Moncol J, Cronin M T, Mazur M and Telser J. 2007 Free radicals and antioxidants in normal physiological functions and human disease. *International Journal of Biochemistry and Cell Biology* 39: 44-84.
- [7] Perše M and Veceric-Haler Z 2018 Cisplatin-Induced Rodent Model of Kidney Injury: Characteristics and Challenges. *BioMed Research International*, Article ID 1462802.
- [8] Romanelli M, Valentina Dini D, Vowden P and Agren, M S 2008 Amelogenin, an extracellular matrix protein, in the treatment of venous leg ulcers and other hard-to-heal wounds: Experimental and clinical evidence. *Clinical Interventions in Aging* 3(2): 263–272.
- [9] Wallace J L and Vong L 2008 NSAID-induced gastrointestinal damage and the design of GI-sparing NSAIDs. *Current Opinion in Investigational Drugs* 9(11):1151-1156.
- [10] Heyman S N, Rosenberger C. and Rosen S. 2011 Acute kidney injury: lessons from experimental models. *Contributions to Nephrology* 169: 286–296.
- [11] Ozkok A and Edelstein C L 2014 Pathophysiology of cisplatin induced acute kidney injury. *Biomed research international*, article ID 967826.
- [12] Ali B H, Al-Salam S, Al Hussein I S, Al-Lawati I, Waly M, Yasin J, Fahim M. and Nemmar A 2011 Abrogation of cisplatin-induced nephrotoxicity by emodin in rats. *Fundam. Clin. Pharmacol.* 27: 192-200.

Journal of Physics: Conference Series

COUNTRY

United Kingdom



Universities and research
institutions in United Kingdom

SUBJECT AREA AND CATEGORY

Physics and Astronomy
Physics and Astronomy
(miscellaneous)

PUBLISHER

IOP Publishing Ltd.

H-INDEX

85

PUBLICATION TYPE

Conferences and Proceedings

ISSN

17426588, 17426596

COVERAGE

2005-2021

INFORMATION

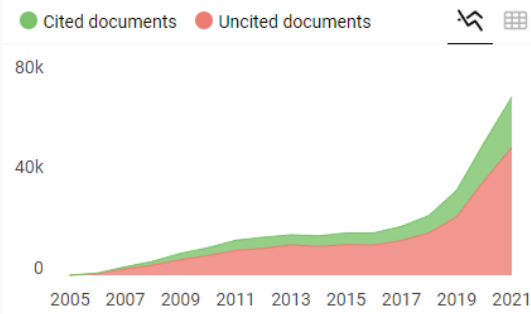
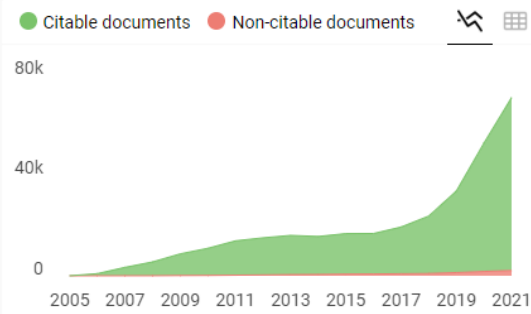
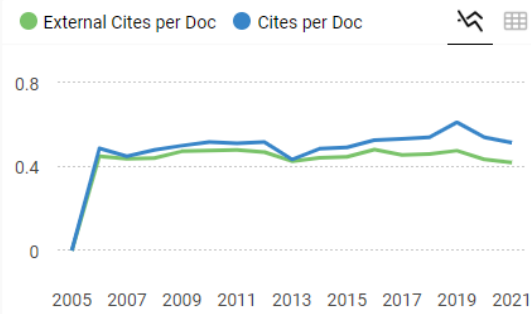
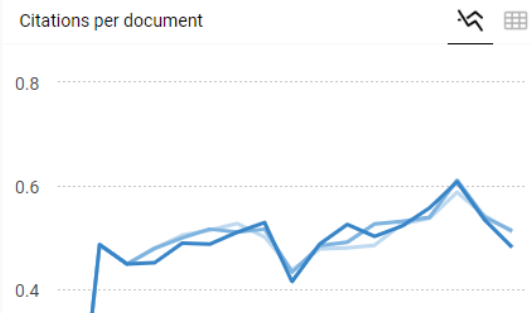
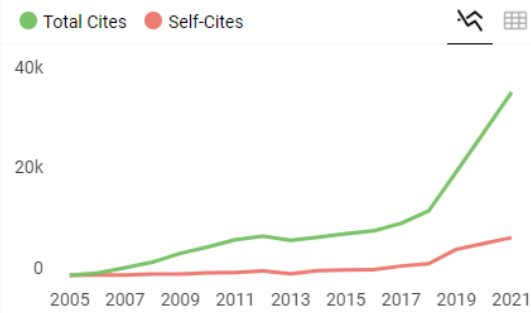
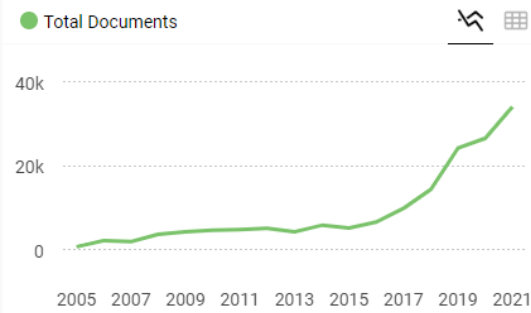
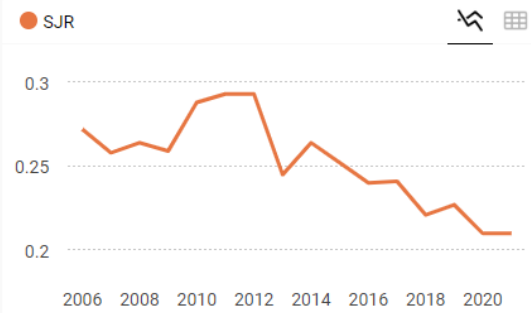
[Homepage](#)

[How to publish in this journal](#)

jpcs@iopublishing.org

SCOPE

The open access Journal of Physics: Conference Series (JPCS) provides a fast, versatile and cost-effective proceedings publication service.



Journal of Physics: Conference Series

Not yet assigned quartile

SJR 2021
0.21

powered by scimagojr.com

← Show this widget in your own website

Just copy the code below and paste within your html code:

```
<a href="https://www.scimaç"
```

SCImago Graphica

Explore, visually communicate and make sense of data with our **new data visualization tool.**



Source details

Journal of Physics: Conference Series

Scopus coverage years: from 2005 to Present

Publisher: Institute of Physics Publishing

ISSN: 1742-6588 E-ISSN: 1742-6596

Subject area: Physics and Astronomy: General Physics and Astronomy

Source type: Conference Proceeding

CiteScore 2021

0.8

SJR 2021

0.210

SNIP 2021

0.395

[View all documents >](#)

[Set document alert](#)

[Save to source list](#) [Source Homepage](#)

[CiteScore](#) [CiteScore rank & trend](#) [Scopus content coverage](#)

i Improved CiteScore methodology

CiteScore 2021 counts the citations received in 2018-2021 to articles, reviews, conference papers, book chapters and data papers published in 2018-2021, and divides this by the number of publications published in 2018-2021. [Learn more >](#)

CiteScore 2021

$$0.8 = \frac{74,925 \text{ Citations 2018 - 2021}}{96,702 \text{ Documents 2018 - 2021}}$$

Calculated on 05 May, 2022

CiteScoreTracker 2022

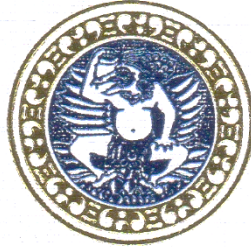
$$0.8 = \frac{68,400 \text{ Citations to date}}{90,117 \text{ Documents to date}}$$

Last updated on 05 September, 2022 • Updated monthly

CiteScore rank 2021

Category	Rank	Percentile
Physics and Astronomy		
General Physics and Astronomy	#195/240	18th

[View CiteScore methodology >](#) [CiteScore FAQ >](#) [Add CiteScore to your site](#)



**KOMISI ETIK PENELITIAN
FAKULTAS KEDOKTERAN HEWAN UNIVERSITAS AIRLANGGA
*Animal Care and Use Committee (ACUC)***

**KETERANGAN KELAIKAN ETIK
“ ETHICAL CLEARENCE ”**

No : 2.KE.076.05.2018

**KOMISI ETIK PENELITIAN (ANIMAL CARE AND USE COMMITTEE)
FAKULTAS KEDOKTERAN HEWAN UNIVERSITAS AIRLANGGA SURABAYA,
TELAH MEMPELAJARI SECARA SEKSAMA RANCANGAN PENELITIAN YANG
DIUSULKAN, MAKA DENGAN INI MENYATAKAN BAHWA :**

- PENELITIAN BERJUDUL** : Pemodelan Pengembangan dan Penggunaan Potensi Ekstrak Tanaman Galing (*Cayratia trifolia*) Dalam Pencegahan Gangguan Fungsi Ginjal Akibat Pemberian Kemoterapi (Cisplatin) Pada Balb/c Mice
- PENELITI UTAMA** : Djoko Santoso
- UNIT/LEMBAGA/TEMPAT PENELITIAN** : Penelitian Dasar Unggulan Perguruan Tinggi Fakultas Kedokteran Universitas Airlangga
- DINYATAKAN** : LAIK ETIK

Surabaya, 14 Mei 2018

Mengetahui,
Dekan FKH-Unair,



Prof. Dr. Pudji Srianto, M.Kes.,Drh.
NIP. 195601051986011001

Ketua,

Dr. Nusdianto Triakoso, M.P.,Drh.
NIP. 196805051997021001