

The expression of TNF- α in recurrent aphthous stomatitis: A systematic review and meta-analysis

Meircurius Dwi Condro Surboyo^{a,*}, Rizky Merdietio Boedi^{b,c}, Ninuk Hariyani^d,
Arvind Babu Rajendra Santosh^{a,e}, Ida Bagus Pramana Putra Manuaba^f, Pamela Handy Cecilia^g,
I Gusti Agung Dyah Ambarawati^h, Adiastuti Endah Parmadiati^a, Diah Savitri Ernawati^a

^a Department of Oral Medicine, Faculty of Dental Medicine, Universitas Airlangga, Surabaya, Indonesia

^b Department of Dentistry, Faculty of Medicine, Universitas Diponegoro, Semarang, Indonesia

^c Centre of Forensic and Legal Medicine and Dentistry, School of Dentistry, University of Dundee, Dundee, United Kingdom

^d Department of Dental Public Health, Faculty of Dental Medicine, Universitas Airlangga, Surabaya, Indonesia

^e School of Dentistry, Faculty of Medical Sciences, University of The West Indies, Jamaica

^f Oral Medicine Specialistic Degree, Faculty of Dental Medicine, Universitas Airlangga, Surabaya, Indonesia

^g Graduate School of Dental Sciences Program, Faculty of Dental Medicine, Universitas Airlangga, Surabaya, Indonesia

^h School of Dentistry, Faculty of Medicine, Udayana University, Jimbaran, Bali, Indonesia

ARTICLE INFO

Keywords:

Saliva
TNF- α
Recurrent aphthous stomatitis
Serum
Tissue expression

ABSTRACT

Objective: The pathogenesis of recurrent aphthous stomatitis (RAS) is related to an increase of pro-inflammatory cytokine, namely tumor necrosis factor α (TNF- α). This cytokine plays an important role in the development of ulcer lesions, both in saliva, tissues and blood. This systematic review analyzed the differences of TNF- α in lesions, salivary and blood and can be used as a reliable method of diagnosis for RAS.

Methods: A comprehensive search of PubMed, Scopus databases, Web of Science, Scielo, Google Scholar and Embase with keywords. The inclusion criteria were studies that assessed the saliva, serum, and RAS lesion, with the outcome reporting the mean of saliva, serum and tissue expression of TNF- α . The risk of bias was also assessed.

Result: Healthy individuals showed significantly lower TNF- α than RAS (SMD = -1.517, 95% CI [-2.25, -0.78]). Although there is a significant difference between sample (i.e., saliva, serum) and detection type (i.e., cytometry bead array, ELISA), both methods can detect a significant difference in TNF- α between healthy individuals and RAS patients.

Conclusions: The TNF- α is a useful diagnostic marker for RAS. We encourage saliva to detect changes in TNF- α during ulceration as it provides accuracy, reliability, and non-invasive procedure compared to a blood draw.

1. Introduction

The diagnosis of recurrent aphthous stomatitis (RAS) can be given definitively if it includes four criteria: recurrence, periodic, unknown etiology, and no systemic alteration [1–4]. Research evidence shows few aggravating factors for RAS, and these are categorized as local (i.e., trauma, smoking) and systemic predisposing factors (i.e., periodic fever, stress) were related to RAS development. However, considering the multiple factors influencing the diagnosis, the enforcement of RAS diagnosis has not been determined.

In the current oral medicine practice, RAS diagnosis is only

determined based on the degree of recurrence, without definite etiology, ulcer period or accompanying objective examination. Since the evidence of RAS pathogenesis is related to oral bacteria changes [5,6], polymorphism of interleukin gene [7,8], and serotonin transporter [9], observing these indicators are complex and not clinically feasible. However, studies have reported that RAS is more likely to have genetic connections and changes in the immune response, such as tumor necrosis factor- α (TNF- α). TNF- α It has become a common inflammatory marker in various mucosal abnormalities of the oral cavity, including RAS [10]. If TNF- α has an essential role in lesion development, then detecting these cytokines can be an objective reference to establish the

* Corresponding author.

E-mail addresses: meircurius@fkg.unair.ac.id, meircurius-2015@fkg.unair.ac.id (M.D.C. Surboyo).

<https://doi.org/10.1016/j.cyto.2022.155946>

Received 31 March 2022; Received in revised form 6 June 2022; Accepted 13 June 2022

Available online 18 June 2022

1043-4666/© 2022 Elsevier Ltd. All rights reserved.

diagnosis. Several studies have reported the expression of these cytokines in various stages of RAS, and the level is elevated in saliva [11], serums [12], and tissue lesions [13].

Several research studies reported that TNF- α is a useful marker for diagnosing RAS. However, a variation is observed in their results and methods for estimating TNF- α . Hence, to understand the available evidence on utilizing TNF- α in diagnosing RAS, the present systematic review analyzes the differences of TNF- α in saliva and blood and can be used as a reliable method of diagnosis for RAS.

2. Material and methods

2.1. Data sources and search strategy

The Preferred Reporting Items for Systematic Reviews and Meta-Analyses (PRISMA) guidelines were adopted for this systematic review and meta-analysis. A comprehensive search of PubMed, Scopus databases, Google Scholar, Scielo, Web of Science and Embase was conducted in March 2022. The following keyword combinations were adopted for searching articles for recurrent aphthous stomatitis: ["recurrent aphthous stomatitis" or "recurrent aphthous ulcers" or "aphthous ulcer" or "RAS" or "RAU"] AND ["tumor necrosis factor" or "TNF" or "TNF-alpha"] AND ["cytokine"] AND ["pro-inflammatory"]. In addition, the reference lists of the eligible articles were searched manually to identify additional relevant publications.

A search strategy was performed using the PICO model (patient, intervention, comparison, outcome), taking into consideration the following aspects: population/patient (RAS patient), diagnostic/therapeutic procedure (the saliva collection and blood drawn), comparison (healthy individual), and outcomes (TNF- α expression or value).

2.2. Study selection

The inclusion criteria for studies were as follows: (i) the diagnostic criteria of RAS were based on an accepted clinical description, both active and remission phases (ii) RAS patient and control (healthy individuals) (iii) reported the TNF- α expression. Fundamental experimental studies such as animal or cell studies, abstracts, narrative reviews, case reports and editorials were excluded from this analysis.

2.3. Data extraction and quality assessment

Three authors screened each study independently (MDCS, IBPPM and PHC). MDCS is an oral medicine specialist with 3 years of experience, IBPPM is a final year residence of oral medicine, and PHC is the last year of the dentistry program. The authors first screened the title(s), abstracts, and full texts to determine whether the inclusion criteria had been met. The following information was then extracted from the studies to be included in the meta-analysis: first author's name, year of publication, age, sex, sample size, study design, RAS type, and the value of TNF- α . In case of disagreement, third investigators (DSE and AEP) will act as a referral and reach a consensus through discussion.

The Joanna Briggs Institute Critical Appraisal Tools, including the 10-item Checklist for Case-Control Studies, 10-item Checklist for Analytical Cross-Sectional Studies, and 13-item Checklist for Randomized Control Study, were used to assess the methodological quality of the included studies. Each item was scored as "yes", "no", "unclear", or "not applicable". One point was assigned to the answer "yes", and zero points were assigned to "no". The total point of each study was categorized into < 50%, 51–75% and > 75% for high, moderate, and low risk of bias. Furthermore, each study assessed the publication bias using *Begg's rank correlation test*, and a *p-value* of < 0.05 indicated no publication bias.

2.4. Data synthesis and analysis

The data extracted from the included articles were entered into R (R

Foundation for Statistical Computing Version 4.0.5, Vienna, Austria) with metafor package [14]. A random-effects model was applied to pool the value of TNF- α with corresponding 95% confidence intervals (CI). The primary size effect was analyzed with the standardized mean difference (SMD) using Cohens' D transformation, with a negative SMD value indicating a lower amount of TNF- α in the healthy individual group and a positive SMD value indicating a higher amount of TNF- α in the RAS group. Knapp and Hartung's adjustment test were used to reduce the number of unjustified significant result from the previous transformation. Furthermore, meta-regression analysis using a mixed-effect model was done to analyze the difference between sample acquisition (i.e., saliva or serum) and the quantification process (i.e., ELISA and cytometric bead array (CBA), etc.).

3. Result

3.1. Characteristics of included studies

A literature search with the specified keywords resulted in 5113 published articles. After title screening was done, only 247 articles were chosen for the next step. Finally, 30 studies were selected in this systematic review based on abstract reading and full-text availability. The PRISMA flowchart of the study search is presented in Fig. 1.

3.2. TNF- α expression on saliva

Seven studies reported the saliva expression of TNF- α with nine observations. Two hundred and seventy-six RAS patients and 190 healthy patients as control were analyzed for salivary TNF- α . Six studies analyzed the salivary TNF- α using ELISA [11,15–19], and one study analyzed using CBA methods [20]. These methods resulted in a higher salivary expression of TNF- α in RAS patients compared to the healthy individual's cohort [11,15–18,20]. In contrast, only one study showed lower salivary expression of TNF- α in RAS patients compared to healthy individuals [19] (Table 1).

3.3. TNF- α expression on serum

The serum TNF- α was reported by seven studies with twelve observations. A total of 283 RAS patients and 351 healthy patients as control were analyzed for serum expression of TNF- α . Six studies analyzed the serum expression of TNF- α using ELISA methods [19,21–24], and three studies analyzed using CBA [25–27]. The ELISA method showed a higher serum expression of TNF- α in RAS patients compared to healthy individuals. One study showed lower salivary expression of TNF- α in RAS patients compared to the healthy individuals [24] (Table 2).

3.4. Risk bias assessments

The risk assessments provide in Table 3, Table 4 and Table 5. Publication bias was not detected in the current study sample ($p < 0.05$).

3.5. Meta-Analysis

Fourteen studies with 21 observations were included in the meta-analysis. The SMD value reported from the random effect model favored the healthy individual group (SMD = -1.376, 95% CI [-2.05, -0.7]) Fig. 2. High heterogeneity was observed with a significant Q-test ($I^2 = 91.68\%$, $\text{Tau}^2 = 1.19$) (Table 6).

The mixed-effect model for meta-regression analysis found a significant difference on SMD between saliva and serum sample acquisition, with saliva samples giving a higher SMD value (SMD = -1.618, 95% CI [-2.64, -0.59]). In the detection type, ELISA and CBA significantly different from each other, CBA gives higher SMD value (SMD = -1.881, 95% CI [-3.11, -0.84]). High heterogeneity was detected in each meta-regression model with a significant Q test (Table 6).

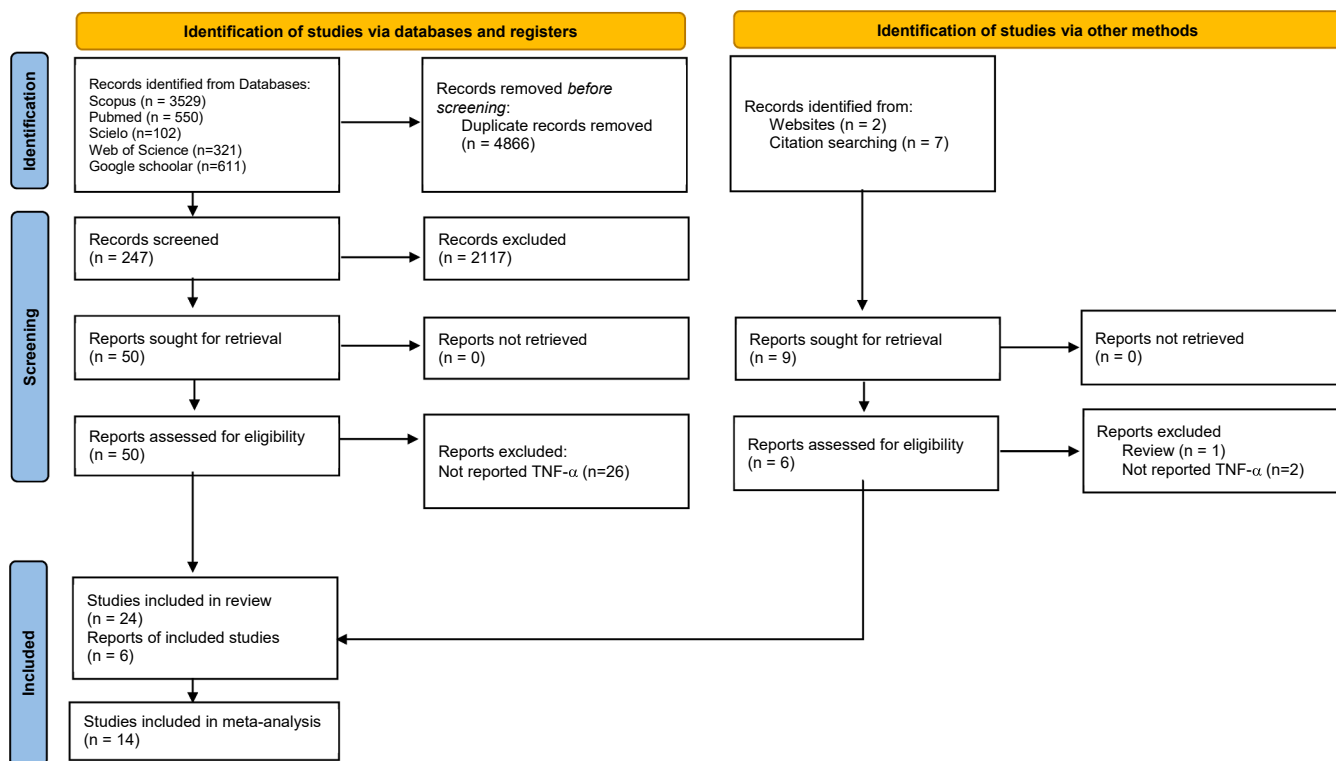


Fig. 1. PRISMA flow chart of the literature search and study selection.

Table 1
TNF-α expression on saliva.

Author	Reference	Type of RAS	Subject		TNF-α expression (Mean ± SD)		Method of detection	Samples
			Health patient	RAS	Health patient	RAS		
Boras et al	[15]	MiRAS	26	26	7.88 ± 8.45	28.00 ± 26.19	ELISA	Saliva
	[15]	MiRAS - remission	26	13	7.88 ± 8.45	54.31 ± 49.63	ELISA	Saliva
Chaudhuri et al	[11]	RAS	30	30	47.85 ± 17.48	86.30 ± 18.59	ELISA	Saliva
Valle et al	[16]	RAS	10	20	26.03 ± 7.66	53.59 ± 20.05	ELISA	Saliva
Hegde et al	[17]	MiRAS	30	30	23.09 ± 6.95	58.82 ± 15.24	ELISA	Saliva
Seifi et al	[18]	MiRAS	18	18	10.76 ± 1.83	34.9 ± 11.35	ELISA	Saliva
	[18]	MiRAS	18	18	10.76 ± 1.83	28.09 ± 9.07	ELISA	Saliva
Borra et al	[19]	RAS	17	20	21.90 ± 42.90	11.50 ± 14.00	ELISA	Saliva
Deng et al	[20]	MiRAS	15	101	0.14 ± 0.18	8.87 ± 20.86	CBA	Saliva

RAS: Recurrent aphthous stomatitis; MiRAS: Minor recurrent aphthous stomatitis; CBA: Cytometric bead array.

Table 2
TNF-α expression on serum.

Author	Reference	Type of RAS	Subject		TNF-α expression (Mean±SD)		Method of detection	Samples
			Health patient	RAS	Health patient	RAS		
Borra et al	[19]	RAS	20	21	0.90 ± 2.90	2.70 ± 5.70	ELISA	Serum
Albinidou et al	[21]	MiRAS	40	32	177.6 ± 16.00	184 ± 16.00	ELISA	Serum
Avci et al	[22]	MiRAS	25	25	3.45 ± 1.01	5.26 ± 1.21	ELISA	Serum
Yamamoto et al	[23]	RAS-active	20	20	95.0 ± 0.00	111.7 ± 52.7	ELISA	Serum
	[23]	RAS-remission	20	20	95.0 ± 0.00	95.0 ± 25.00	ELISA	Serum
Zhu et al	[24]	RAS	70	70	278.4 ± 31.50	263.5 ± 32.70	ELISA	Serum
Elamrousy et al	[25]	MiRAS	20	20	278.20 ± 11.37	281.30 ± 11.79	CBA	Serum
Shen et al	[26]	MiRAS	20	127	0.33 ± 0.63	2.26 ± 5.02	CBA	Serum
Lewkowicz et al	[27]	RAS-active	12	10	391.4 ± 105.78	762.0 ± 193.74	CBA	Serum
	[27]	RAS-remission	12	8	391.4 ± 105.78	754.5 ± 258.73	CBA	Serum
	[27]	RAS-active	12	10	579.3 ± 70.54	1236.3 ± 219.89	CBA	Serum
	[27]	RAS-remission	12	8	579.3 ± 70.54	1826.3 ± 277.36	CBA	Serum

RAS: Recurrent aphthous stomatitis; MiRAS: Minor recurrent aphthous stomatitis; CBA: Cytometric bead array.

Table 3

Study quality of analytical cross-sectional study.

Author	Reference	Type of study	Q1	Q2	Q3	Q4	Q5	Q6	Q7	Q8	Total
Chaudhuri et al	[11]	Analytical cross-sectional study	✓	✓	✓	✓	X	X	✓	✓	75%
Borra et al	[19]	Analytical cross-sectional study	✓	✓	✓	✓	X	X	✓	✓	75%
Deng et al	[20]	Analytical cross-sectional study	✓	✓	✓	✓	X	X	✓	✓	75%
Avci et al	[22]	Analytical cross-sectional study	✓	✓	✓	✓	X	X	✓	✓	75%
Zhu et al	[24]	Analytical cross-sectional study	✓	✓	✓	✓	✓	✓	✓	✓	100%
Shen et al	[26]	Analytical cross-sectional study	✓	✓	✓	✓	X	X	✓	✓	75%

Q1: Were the criteria for inclusion in the sample clearly defined?

Q2: Were the study subjects and the setting described in detail?

Q3: Was the exposure measured in a valid and reliable way?

Q4: Were objective, standard criteria used for measurement of the condition?

Q5: Were confounding factors identified?

Q6: Were strategies to deal with confounding factors stated?

Q7: Were the outcomes measured in a valid and reliable way?

Q8: Was appropriate statistical analysis used?

Table 4

Study quality of case control study.

Author	Reference	Type of study	Q1	Q2	Q3	Q4	Q5	Q6	Q7	Q8	Q9	Q10	Total
Boras et al	[15]	Case control study	✓	✓	✓	NA	NA	X	X	✓	NA	✓	50%
Valle et al	[16]	Case control study	✓	✓	✓	NA	NA	X	X	✓	NA	✓	50%
Hegde et al	[17]	Case control study	✓	✓	✓	NA	NA	X	X	✓	NA	✓	50%
Seifi et al	[18]	Case control study	✓	✓	✓	NA	NA	X	X	✓	NA	✓	50%
Albinidou et al	[21]	Case control study	✓	✓	✓	NA	NA	X	X	✓	NA	✓	50%
Yamamoto et al	[23]	Case control study	✓	✓	✓	NA	NA	X	X	✓	NA	✓	50%
Lewkowicz et al	[27]	Case control study	✓	✓	✓	NA	NA	X	X	✓	NA	✓	50%

Q1: Were the groups comparable other than the presence of disease in cases or the absence of disease in controls?

Q2: Were cases and controls matched appropriately?

Q3: Were the same criteria used for identification of cases and controls?

Q4: Was exposure measured in a standard, valid and reliable way?

Q5: Was exposure measured in the same way for cases and controls?

Q6: Were confounding factors identified?

Q7: Were strategies to deal with confounding factors stated?

Q8: Were outcomes assessed in a standard, valid and reliable way for cases and controls?

Q9: Was the exposure period of interest long enough to be meaningful?

Q10: Was appropriate statistical analysis used?

Table 5

Study quality of randomized control study.

Author	Reference	Type of study	1	2	3	4	5	6	7	8	9	10	11	12	13	Total
Elamrousy et al	[25]	RCT	✓	✓	✓	✓	✓	✓	✓	✓	✓	✓	✓	✓	✓	100%

Q1: Was true randomization used for assignment of participants to treatment groups?

Q2: Was allocation to treatment groups concealed?

Q3: Were treatment groups similar at the baseline?

Q4: Were participants blind to treatment assignment?

Q5: Were those delivering treatment blind to treatment assignment?

Q6: Were outcomes assessors blind to treatment assignment?

Q7: Were treatment groups treated identically other than the intervention of interest?

Q8: Was follow up complete and if not, were differences between groups in terms of their follow up adequately described and analyzed?

Q9: Were participants analyzed in the groups to which they were randomized?

Q10: Were outcomes measured in the same way for treatment groups?

Q11: Were outcomes measured in a reliable way?

Q12: Was appropriate statistical analysis used?

Q13: Was the trial design appropriate, and any deviations from the standard RCT design (individual randomization, parallel groups) accounted for in the conduct and analysis of the trial?

4. Discussion

TNF- α plays a significant role in mediating acute inflammation. A similar relation between TNF- α and RAS is observed. Our current finding suggests that multiple types of research explore the quantified amount of TNF- α produced when various predisposing factors were accounted. Nevertheless, all findings agreed that TNF- α changes between healthy individuals and RAS patients. These differences in TNF- α provide

evidence that a reliable and easy to enforce RAS diagnostic is through TNF- α . Unfortunately, no published literature explains the role of molecules that allow elevation of TNF- α expression in saliva and blood patients with RAS.

TNF- α becomes an important marker for the occurrence and development of RAS lesions. TNF- α was found to be consistently higher in active lesions [15,27], and recurrent [15,27], even when the lesion has healed [28]. In the formation and development of RAS lesions, trauma

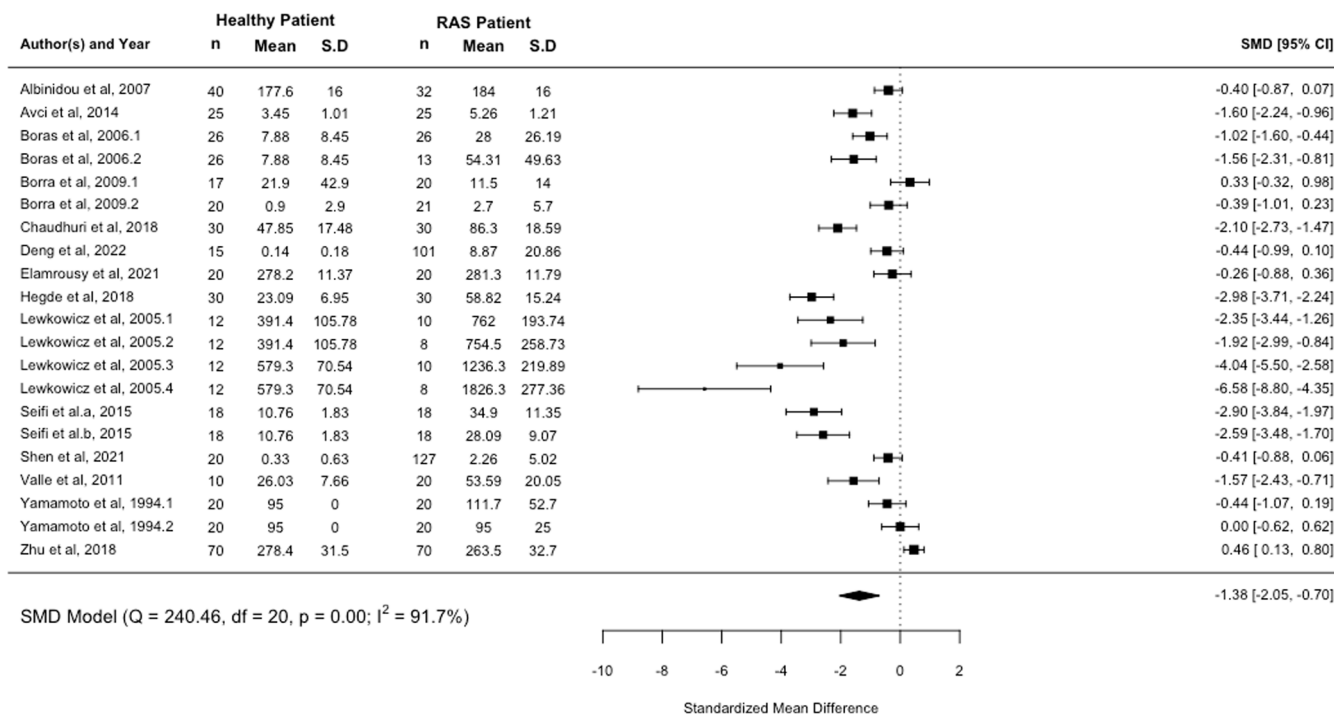


Fig. 2. TNF-α expression on saliva. n: Number of patients in each group, S.D: standard deviation, SMD: Standardized Mean Difference, 95% CI: Confidence Interval, Q(df): Q test for homogeneity and degrees of freedom, I²: Total Heterogeneity.

Table 6
Meta-Regression Models.

	n	SMD	95% CI	Q(df)	Tau ²	I ²
Sample Type						
Saliva	9	-1.618	-2.64 -0.59	194.46(19)	1.02	90.23%
Serum	12	-1.151	-2.05 -0.25			
Detection Type						
CBA	7	-1.881	-3.11 -0.65	239.92(19)	1.29	92.08%
ELISA	14	-1.165	-1.98 -0.35			

SMD: Standardized Mean Difference, 95% CI: Confidence Interval, Q(df): Q test for homogeneity and degrees of freedom. Tau²: estimated amount of total heterogeneity, I²: Total Heterogeneity; n: number of observations.

frequently plays a role in RAS onset. In this context, trauma is a local factor that can occur in the oral cavity due to masticatory or occluding forces or other harmful habits. In addition, immunological abnormalities (deficiencies/suppressed) can assist during traumatic episodes by triggering an immunological response to develop RAS. During this immunological response, an abnormal cytokine cascade is activated in the oral mucosal environment, which leads to a cell-mediated immune response in a focal area of the oral mucosa [29]. During the development of the lesion, the CD4+/CD8 + ratio is disrupted, recruitment lymphocytes and macrophages in the lesion — therefore, increasing the cytokine production of TNF-α [30]. The immune response occurs not only in the local region of ulcerated tissue but also triggers an increased blood flow and capillary permeability. Thus, the systemic influence of TNF-α is noted in the bloodstream. Increased TNF-α in the blood and saliva does not cause clinical manifestation in RAS patients but represents a sign of damage to oral tissue triggered by an immunological alteration in the body.

Meanwhile, the pathogen recognition receptor (PRR) releases phagocytic-chemokines cells (i.e., macrophages, dendritic and mast cells) to secrete pro-inflammatory cytokines such as TNF-α. These inflammatory mediators cause an increase in vascular permeability expression of cell adhesion molecules (CAM) and chemokines. Hence, the epithelium becomes an inflamed form of ulceration [31].

High TNF-α levels in the blood serum in patients with active disease indicate a polarized Th1 response [32]. Therefore, Th1 will be seen in the RAS due to the release of TNF-α. This event will stimulate cytotoxic T lymphocytes and increase endothelial expression, causing inflammatory cells migration to the inflammation site, which causes ulcer development [30,33].

Several cytokines that are linked with RAS pathogenesis have also been studied, however there were no confirmatory observations on those cytokines in RAS. Clinical studies that focused on estimation of cytokine levels in RAS are interferon and Interleukins, such as IFN [34,35], IL-8 [36], IL-1β [37–40], IL-1 [35,41,42], IL-2 [34,43–46], IL-4 [44,45,47,48], IL-6 [37,42,46,49], IL-10 [39,45,50–53], IL-12 [50,51], IL-13 [35,45], IL-17 [35,54], IL-17C [55], IL-17F [56]. Unfortunately, these findings on cytokines were not able to achieve any clinically reliable application in RAS while comparing TNF-α.

One of the invasive methods that assist in analyzing TNF-α levels is obtaining tissue samples of RAS lesions. However, current evidence indicates that tissue sampling from RAS does not yield good results for estimating TNF-α levels. RAS lesions for immunohistochemical examination [32,57], mRNA extraction [28,58], and RNA [59] showed that TNF-α is higher than in healthy individuals. However, this method is invasive and requires surgical procedures, so that it cannot efficiently provide a favorable clinical application.

Nowadays, saliva is the most helpful component of chair side diagnosis. Saliva can use to diagnose systemic illnesses, monitoring general health, understand the prognosis of a disease, or identify an oral sign of systemic disease. The serum component of saliva is derived originally from the vascularity of carotid arteries. Saliva has the same molecule found in systemic circulation [60]. From this review, we found that the elevation of TNF-α expression in saliva and serum can be detected. The increased TNF-α expression in the saliva is easier to analyze in the clinical setting of oral medicine for diagnosing RAS due to its relevance and non-invasive nature of specimen collection.

Further analysis of detection type indicates that CBA is significantly different in TNF-α detection compared to ELISA due to its better sensitivity. This assures clinicians, especially in RAS patients who have

passed the acute phase, both in the active and remission phase, that low concentrations of TNF- α can still be detected using CBA. This finding strengthened the procedures for the enforcement of diagnosis from RAS objectively and confirmed the role of TNF- α in the pathogenesis of RAS. Despite the significant difference, both methods are acceptable forms of diagnosis regarding TNF- α detection.

5. Conclusion

In the current dental or oral medicine practice, RAS cases are diagnosed through clinical examination. However, this approach is not completely adequate for starting RAS management. Hence, estimation of TNF- α is recommended as chair side consideration. Both systematic review and meta-analysis findings of this study state that TNF- α should serve as a reliable diagnostic marker for RAS. Whilst the detection method is comparably similar, we encourage saliva to detect changes in TNF- α during ulceration as it provides accuracy, reliability, and non-invasive procedure compared to a blood draw.

Declaration of Competing Interest

The authors declare that they have no known competing financial interests or personal relationships that could have appeared to influence the work reported in this paper.

References

- Giannetti, Murri Dello Diago A, Lo Muzio L, Recurrent aphthous stomatitis. *Minerva Stomatol.* 67 (2018) 125–128.
- Belenguier-guallar, Y. Jiménez-soriano, A. Claramunt-Lozano, Treatment of recurrent aphthous stomatitis. A literature review, *J Clin Exp Dent.* 6 (2014) 168–174.
- S.O. Akintoye, M.S. Greenberg, Recurrent Aphthous Stomatitis, *Dent Clin North Am.* 58 (2) (2014) 281–297.
- J. Sánchez, C. Conejero, R. Conejero, Recurrent Aphthous Stomatitis, *Actas Dermo-Sifiliográficas (Engl Ed).* 111 (2020) 471–480.
- H. Yuan, J. Qiu, T. Zhang, X. Wu, J. Zhou, S. Park, Quantitative changes of Veillonella, Streptococcus, and Neisseria in the oral cavity of patients with recurrent aphthous stomatitis: A systematic review and meta-analysis, *Arc Oral Biol.* 129 (2021) 105198, <https://doi.org/10.1016/j.archoralbio.2021.105198>.
- C.C. Gomes, R.S. Gomez, L.G. Zina, F.R. Amaral, Recurrent aphthous stomatitis and Helicobacter pylori, *Med Oral Patol Oral Cir Bucal.* 21 (2016) e187–e191.
- Y. Zhou, J. Wu, W. Wang, M. Sun, Association between interleukin family gene polymorphisms and recurrent aphthous stomatitis risk, *Genes Immun.* 20 (2019) 90–101.
- L. Chen, Z. Ke, Z. Zhou, X. Jiang, Y. Zhao, J. Zhang, Associations of IL-1, 6, and 10 Gene Polymorphisms with Susceptibility to Recurrent Aphthous Stomatitis: Insights from a Meta-Analysis, *Genet Test Mol Biomarkers.* 22 (2018) 237–245.
- Y. Lu, W. Wang, X. Ding, X. Shi, Association between the promoter region of serotonin transporter polymorphisms and recurrent aphthous stomatitis: A meta-analysis, *Arc Oral Biol.* 109 (2020) 104555, <https://doi.org/10.1016/j.archoralbio.2019.104555>.
- C. Rivera, Essentials of recurrent aphthous stomatitis (Review), *Biomed Rep.* 11 (2019) 47–50.
- K. Chaudhuri, K.K. Nair, L. Ashok, Salivary levels of TNF- α in patients with recurrent aphthous stomatitis: A cross-sectional study, *J Dent Res Dent Clin Dent Prospects.* 12 (1) (2018) 45–48.
- M.A.M. Mimura, R.C. Borra, C.H.W. Hirata, P.N. de Oliveira, Immune response of patients with recurrent aphthous stomatitis challenged with a symbiotic, *J Oral Pathol Med.* 46 (2017) 821–828.
- O.Y. Feleshtynska, O.O. Dyadyk, Substantiation of Diagnosis and Treatment of Chronic Recurrent Aphthous Stomatitis in Crohn's Disease, *Wiad Lek.* 73 (2020) 512–516.
- W. Viechtbauer, Conducting Meta-analysis in R with the metafor package, *J Stat Softw.* 36 (2010) 1–48.
- V.V. Boras, J. Lukač, V. Brailo, P. Picek, D. Kordić, I.A. Žilić, Salivary interleukin-6 and tumor necrosis factor- α in patients with recurrent aphthous ulceration, *J Oral Pathol Med.* 35 (2006) 241–243.
- A.E. del Valle, R.M.C. Llamas, J. López-Vicente, A. Uribarri-Etxebarria, J.M. M. Aguirre-Urizar, A. Eguia-Del Valle, et al., Salivary levels of Tumour Necrosis Factor- α in patients with recurrent aphthous stomatitis, *Med Oral Patol Oral Cir Bucal.* 16 (2011) 6–9.
- S. Hegde, V. Ajila, S. Babu, S. Kumari, H. Ullal, A. Madiyal, Evaluation of salivary tumour necrosis factor- α in patients with recurrent aphthous stomatitis, *Eur Oral Res.* 52 (2018) 157–161.
- S. Seifi, G. Maliji, A. Azadmehr, M. Motallebnejad, E. Maliji, M.K. Samani, et al., Salivary VEGF-R3, TNF- α , TGF- β and IL-17A/F Levels in Patients with Minor Aphthous, *Res Mol Med.* 3 (2015) 30–35.
- R.C. Borra, B.F. de Mesquita, L.M. de Andrade, F.E. Villanova, P.M. Andrade, Toll-like receptor activity in Recurrent Aphthous Ulceration, *J Oral Pathol Med.* 38 (2009) 289–298.
- Y. Deng, Y. Yao, G. Du, W. Liu, Changes in Th1/Th2-related cytokine expression in the saliva of patients with recurrent aphthous stomatitis before and after prednisone treatment, *Clin Oral Investig.* 22 (2022) 1089–1093.
- E. Albanidou-Farmaki, A.K. Markopoulos, F. Kalogerakou, D.Z. Antoniadis, Detection, enumeration and characterization of T helper cells secreting type 1 and type 2 cytokines in patients with recurrent aphthous stomatitis, *Tohoku J Exp Med.* 212 (2007) 101–105.
- E. Avci, Z.Z. Akarslan, H. Erten, S. Coskun-Cevher, Oxidative stress and cellular immunity in patients with recurrent aphthous ulcers, *Braz J Med Biol Res.* 47 (2014) 355–360.
- T. Yamamoto, K. Yoneda, E. Ueta, T. Osaki, Serum cytokines, interleukin-2 receptor, and soluble intercellular adhesion molecule-1 in oral disorders, *Oral Surg Oral Med Oral Pathol.* 78 (6) (1994) 727–735.
- S. Zhu, Q. Shi, J. Lu, Curative effect of oral ulcer powder on the treatment of recurrent aphthous ulcer, *Pak J Pharm Sci.* 31 (2018).
- W. Elamrousy, A. Mortada, M. Shoukheba, Evaluation of novel topical camel whey protein gel for the treatment of recurrent aphthous stomatitis: Randomized clinical study, *J Int Soc Prev Community Dents.* 11 (2021) 574–581.
- C. Shen, W. Ye, L. Gong, K. Lv, B. Gao, H. Yao, Serum interleukin-6, interleukin-17A, and tumor necrosis factor- α in patients with recurrent aphthous stomatitis, *J Oral Pathol Med.* 50 (4) (2021) 418–423.
- N. Lewkowicz, P. Lewkowicz, M. Banasik, A. Kurnatowska, H. Tchorzewski, Predominance of Type 1 cytokines and decreased number of CD4CD25 T regulatory cells in peripheral blood of patients with recurrent aphthous ulcerations, *Immunol Lett.* 99 (2005) 57–62.
- I.J. Buño, J. Clark Huff, W.L. Weston, D.T. Cook, S.L. Brice, Elevated levels of interferon gamma, tumor necrosis factor α , interleukins 2, 4, and 5, but not interleukin 10, are present in recurrent aphthous stomatitis, *Arch Dermatol.* 134 (1998) 827–831.
- S.J. Challacombe, S. Alshahaf, A. Tappuni, Recurrent Aphthous Stomatitis: Towards Evidence-Based Treatment? *Curr Oral Health Rep.* 2 (3) (2015) 158–167.
- A. Yusran, E. Marlina, S. Sumintarti, Adanya korelasi kadar TNF- α antara pemeriksaan hapusan lesi dengan pemeriksaan darah perifer pasien stomatitis aftosa rekuren Correlation of TNF- α between lesional swab and peripheral blood of mononuclear cell of recurrent aphthous stomatitis patient, *J Dentomax Sci.* 10 (2011) 71.
- H. Pflücke, M. Sixt, Preformed portals facilitate dendritic cell entry into afferent lymphatic vessels, *J Exp Med.* 206 (2009) 2925–2935.
- A.M. Dalghous, J. Freysdottir, F. Fortune, Expression of cytokines, chemokines, and chemokine receptors in oral ulcers of patients with Behcet's disease (BD) and recurrent aphthous stomatitis is Th1-associated, although Th2-association is also observed in patients with BD, *Scand J Rheumatol.* 35 (2006) 472–475.
- M.D.C. Surboyo, D.S. Ernawati, J. Sunariani, Mechanism of TRADD And RIP In Necroptosis of Recurrent Aphthous Ulcers In Inflammatory Bowel Disease, *Biochem Cell Arch.* 20 (2020) 2951–2955.
- S. Najafi, H. Yousefi, M. Mohammadzadeh, A.Z. Bidoki, E. Farhadi, N. Rezaei, Interleukin-2, Interferon-gamma Gene Polymorphisms in Recurrent Aphthous Stomatitis, *Prague Med Rep.* 118 (2017) 81–86.
- K. Ozyurt, A. Çelik, M. Sayarlioglu, E. Colgecen, R. Inci, T. Karakas, et al., Serum Th1, Th2 and Th17 cytokine profiles and alpha-enolase levels in recurrent aphthous stomatitis, *J Oral Pathol Med.* 43 (2014) 691–695.
- P. Gupta, L. Ashok, Shantalar Naik, Assessment of serum interleukin-8 as a sensitive serological marker in monitoring the therapeutic effect of levamisole in recurrent aphthous ulcers: A randomized control study, *Indian Journal of Dental Research.* 25 (3) (2014) 284, <https://doi.org/10.4103/0970-9290.138293>.
- M.R. Bazrafshani, A.H. Hajeer, W.E.R. Ollier, M.H. Thornhill, IL-1B and IL-6 gene polymorphisms encode significant risk for the development of recurrent aphthous stomatitis (RAS), *Genes Immun.* 3 (2002) 302–305.
- A.L.S. Guimarães, A.R. de Sá, J.M.N. Victória, J.F. Correia-Silva, P.S. Pessoa, M. G. Diniz, et al., Association of interleukin-1 β polymorphism with recurrent aphthous stomatitis in Brazilian individuals, *Oral Dis.* 12 (2006) 580–583.
- Z. Ślebioda, E. Krawiecka, M. Rozmiarek, E. Szponar, A. Kowalska, B. Dorocka-Bobkowska, Clinical phenotype of recurrent aphthous stomatitis and interleukin-1 β genotype in a Polish cohort of patients, *J Oral Pathol Med.* 46 (2017) 657–662.
- Z. Ślebioda, A. Kowalska, M. Rozmiarek, E. Krawiecka, E. Szponar, B. Dorocka-Bobkowska, The absence of an association between Interleukin 1 β gene polymorphisms and recurrent aphthous stomatitis (RAS), *Arc Oral Biol.* 84 (2017) 45–49.
- I. Izakovicova Holla, S. Valova, P. Borilova Linhartova, J. Bartova, J. Petanova, P. Kuklinek, et al., Association study of interleukin-1 family, interleukin-6, and its receptor gene polymorphisms in patients with recurrent aphthous stomatitis, *J Oral Pathol Med.* 46 (2017) 1030–1035.
- S. Najafi, H. Yousefi, M. Mohammadzadeh, A.Z. Bidoki, I. Firouze Moqadam, E. Farhadi, et al., Association study of interleukin-1 family and interleukin-6 gene single nucleotide polymorphisms in recurrent aphthous stomatitis, *Int J Immunogenet.* 42 (2015) 428–431.
- R. Kalpana, M. Thubashini, S.B. Sivapatha, Detection of salivary interleukin-2 in recurrent aphthous stomatitis, *J Oral Maxillofac Path.* 18 (2014) 361–364.
- S.S. Lin, M.Y. Chou, C.C. Ho, C.T. Kao, C.H. Tsai, L. Wang, et al., Study of the viral infections and cytokines associated with recurrent aphthous ulceration, *Microbes Infect.* 7 (2005) 635–644.
- P. Borilova Linhartova, J. Janos, S. Slezakova, J. Bartova, J. Petanova, P. Kuklinek, A. Fassmann, L. Dusek, L. Izakovicova Holla, Recurrent aphthous stomatitis and

- gene variability in selected interleukins: a case-control study, *Eur J Oral Sci.* 126 (6) (2018) 485–492.
- [46] F.N. Pekiner, E. Aytugar, G.Y. Demirel, M.O. Borahan, Interleukin-2, interleukin-6 and T regulatory cells in peripheral blood of patients with Behçet's disease and recurrent aphthous ulcerations, *J Oral Pathol Med.* 41 (2012) 73–79.
- [47] G. Kalkan, S. Yigit, N. Karakus, Y. Baş, H.Y. Seçkin, Association between interleukin 4 gene intron 3 VNTR polymorphism and recurrent aphthous stomatitis in a cohort of Turkish patients, *Gene.* 527 (2013) 207–210.
- [48] S. Najafi, M. Mohammadzadeh, F. Rajabi, A. Zare Bidoki, H. Yousefi, E. Farhadi, et al., Interleukin-4 and Interleukin-4 Receptor Alpha Gene Polymorphisms in Recurrent Aphthous Stomatitis, *Immunol Inves.* 47 (2018) 680–688.
- [49] N. Karakus, S. Yigit, A. Rustemoglu, G. Kalkan, N. Bozkurt, Effects of interleukin (IL)-6 gene polymorphisms on recurrent aphthous stomatitis, *Arch Dermatol Res.* 306 (2014) 173–180.
- [50] M.R. Bazrafshani, A.H. Hajeer, W.E.R. Ollier, M.H. Thornhill, Polymorphisms in the IL-10 and IL-12 gene cluster and risk of developing recurrent aphthous stomatitis, *Oral Dis.* 9 (2003) 287–291.
- [51] Bhosale SS, Rajput BS, Takkar H, Bhagat S v., Vagger RM, K Shaikh MI. Establishment of role of IL-2, IL-10 and IL-12 in patients with recurrent aphthous stomatitis-A clinical study. *J Contemp Dent Pract.* 19 (2018) 1242–5.
- [52] N.T. Miyamoto, R.C. Borra, M. Abreu, L.L.M. Weckx, M. Franco, Immune-expression of HSP27 and IL-10 in recurrent aphthous ulceration, *J Oral Pathol Med.* 37 (2008) 462–467.
- [53] S. Najafi, I.F. Moqadam, M. Mohammadzadeh, A.Z. Bidoki, H. Yousefi, E. Farhadi, et al., Interleukin-10 gene polymorphisms in recurrent aphthous stomatitis, *Immunol Invest.* 43 (2014) 405–409.
- [54] Xiang H, Cheng D, Guo H, Wang Y, Jia Z, Gao Q. Relationships of interleukin-17 polymorphisms with recurrent aphthous ulcer risk in a Han Chinese population. *J Inter Med Res.* 48 (2020).
- [55] A. Al-Samadi, V.P. Kouri, A. Salem, M. Ainola, E. Kaivosoja, G. Barreto, et al., IL-17C and its receptor IL-17RA/IL-17RE identify human oral epithelial cell as an inflammatory cell in recurrent aphthous ulcer, *J Oral Pathol Med.* 43 (2014) 117–124.
- [56] A. Zare Bidoki, A. Massoud, S. Najafi, M. Mohammadzadeh, N. Rezaei, Autosomal dominant deficiency of the interleukin-17F in recurrent aphthous stomatitis: Possible novel mutation in a new entity, *Gene.* 654 (2018) 64–68.
- [57] S.S. Natah, R. Häyrinen-Immonen, J. Hietanen, M. Malmström, Y.T. Kontinen, Immunolocalization of tumor necrosis factor- α expressing cells in recurrent aphthous ulcer lesions (RAU), *J Oral Pathol Med.* 29 (1) (2000) 19–25.
- [58] Guimarães ALS, Correia-Silva J de F, Sá AR de, Victória JMN, Diniz MG, Costa F de O, et al. Investigation of functional gene polymorphisms IL-1 β , IL-6, IL-10 and TNF- α in individuals with recurrent aphthous stomatitis. *Arch Oral Biol.* 52 (2007) 268–72.
- [59] N. Lewkowicz, B. Kur, A. Kurnatowska, H. Tchorzewski, P. Lewkowicz, Expression of Th1/Th2/Th3/Th17-related genes in recurrent aphthous ulcers, *Arch Immunol Ther Ex (Warsz).* 59 (5) (2011) 399–406.
- [60] Gomes FIF, Aragão MGB, Barbosa FCB, Bezerra MM, de Paulo Teixeira Pinto V, Chaves HV. Inflammatory Cytokines Interleukin-1 β and Tumour Necrosis Factor- α - Novel Biomarkers for the Detection of Periodontal Diseases: a Literature Review. *J Oral Maxillofac Res.* 7 (2016) 1–10.