

PAPER • OPEN ACCESS

ASEAN-FEN INTERNATIONAL FISHERIES SYMPOSIUM – 2017

To cite this article: 2018 *IOP Conf. Ser.: Earth Environ. Sci.* **137** 011001

View the [article online](#) for updates and enhancements.

You may also like

- [The effect of climate change damages on agriculture, forestry and fisheries in ASEAN countries](#)

R M Indriawati and D Prasetyani

- [Analysis on the Characteristics of Aquatic Products Trade between China and ASEAN based on the HS Classification](#)

Xiao-fei Luo and Yong-hui Han

- [ASEAN and the EU in handling the COVID-19 outbreak: A comparative study between supranational organizations](#)

Henny S.D. Nugrahani, Akbar Azmi, Graha Christi et al.



245th ECS Meeting
San Francisco, CA
May 26–30, 2024

PRiME 2024
Honolulu, Hawaii
October 6–11, 2024

Bringing together industry, researchers, and government across 50 symposia in electrochemistry and solid state science and technology

Learn more about ECS Meetings at
<http://www.electrochem.org/upcoming-meetings>

ECS Save the Dates for future ECS Meetings!

IOP Conference Series Earth and Environmental Sciences

ASEAN-FEN

7th International Fisheries Symposium

*Projecting ASEAN FEN-Plus for Sustainable
Aquaculture, Fisheries and Aquatic Ecosystem*

Batu City, Indonesia. November 07-09, 2017



IOP Proceeding



Preface

The 7th ASEAN-FEN International Fisheries Symposium was successfully held in Batu, East Java, Indonesia 7 – 9 November 2017. The conference was hosted by Faculty of Fisheries and Marine Science, Brawijaya University Malang Indonesia. The theme of this symposium was “Projecting ASEAN FEN Plus for Supporting Sustainable Aquaculture, Fisheries and Aquatic Ecosystems”, with focus on the advanced innovation to address to the newly emerged issues in aquaculture, fisheries and aquatic ecosystems for the synergies between socioeconomic development and protecting natural resources and the environment.

The conference was attended by over 500 researchers from different countries, who presented and discussed the results of their work within the framework of five main areas: 1. Aquaculture, 2. Sustainable fisheries and management, 3. Seafood processing and biotechnology, 4. Aquatic resources, biodiversity and environment, and 5. Fisheries Economic.

ASEAN-FEN IFS 2017 Committee received more than 120 manuscripts from participated universities and research institutes, and 106 manuscripts were accepted for publication. All of the papers were subjected to peer-review by qualified experts in the field selected by the conference committee. The papers selected depended on their quality and their relevancy to the conference.

We would like to thank all the authors who have contributed to this volume and also to the board members, organizing committee, reviewers, speakers, chairpersons, sponsors and all the conference participants for their support to the ASEAN-FEN IFS 2017.

Warm Regards,

Dr.Sc. Asep Awaludin Prihanto, S.Pi., MP.

Chairperson of ASEAN FEN, IFS 2017
Faculty of Fisheries and Marine Science,
Brawijaya University, Malang, Indonesia

ORGANIZING COMMITTEE

Chairperson

Dr. Sc. Asep Awaludin Prihanto., S.Pi., MP, Faculty of Fisheries and Marine Science,
Brawijaya University, Indonesia

International Scientific Board Committee

Chair person

Dr. Sasmito Djati, MS.Vice Rector, Brawijaya University, Indonesia

Assoc. Prof. Dr. Sukree Hajisamae, Dean, PSU, Thailand; Chairman of ASEAN-FEN

Members

Dr. Happy Nursyam, Universitas Brawijaya, Indonesia

Prof .Dr.Mazlan bin Ghaffar, Universiti Malaysia Terengganu, Malaysia

Prof. Dr. Siti Azizah Mohd Nor, Universiti Sains Malaysia

Assoc. Prof. Dr. Truong Quoc Phu, Can Tho University, Vietnam

Assoc. Prof. Dr. Tran Ngoc Hai, Can Tho University, Vietnam

Assoc. Prof. Dr. Shettapong Mekrumpun, Kasetsart University, Thailand

Assist.Prof.Dr. Prasert Tongnunui, Rajamangala University of Science and Technology
Srivijaya, Thailand

Dr. Mirni Lamid, DVM, M.Sc.Universitas Air Langga, Indonesia

Assoc. Prof. Dr. Nguyen Nhu Tri, Nong Lam University, Vietnam

Dr. Pham Quoc Hung, NhaTrang University, Vietnam

Mr. Seng Samphal, Royal University of Agriculture, Cambodia

Mr.Lam Khannarith, Prek Leap National College of Agriculture, Cambodia

Prof. Myin zu Min, University of Yangon, Myanmar

Assist. Prof. Dr. Ekarut Srisuk, Burapha University, Thailand

Prof. Crispino A. Saclauso, University of Philippines Visayas, Philippines

Prof. Dr. Fatimah Md. Yusoff, Universiti Putra Malaysia, Malaysia

Secretary

Rahmi Nurdiani, S.Pi, M.App.Sc, Ph.D

Treasury

Citra Satrya Utama Dewi S.Pi., M.Si

Hefti Salis Yufidasari, S.Pi, MP

Secretariat

Coordinator

Candra Adi Intyas, S.Pi, MP

Supriyadi, S.Pi

Web and IT Division

Dhira Khurniawan S., S.Kel., M.Sc.

Bayu Kusuma, S.Pi, MSc

AnggaWiraperdana, SPi, MP

Program Division

Oktiyas Muzaky L, S.T, M.Sc.

Abdul Aziz Jaziri, S.Pi, M.Sc

Conference Photographs









OPEN ACCESS 012014

The identification of plankton, water quality, blood cell, and histology in culture pond of tilapia *Oreochromis niloticus* which infected by viral nervous necrosis (VNN)

U Yanuhar, D T Rahayu, M Musa and D Arfiati

[+ Open abstract](#) [View article](#) [PDF](#)

OPEN ACCESS 012015

Effect of mercury chloride to number of melano-macrophage centers on the kidney of carp fish (*Cyprinus carpio*)

L Mubarokah, W Tjahjaningsih and L Sulmartiwi

[+ Open abstract](#) [View article](#) [PDF](#)

OPEN ACCESS 012016

The effects of season, aeration and light intensity on the performance of pacific whiteleg shrimp (*Litopenaeus vannamei*) polycultured with seaweed (*Gracilaria verrucosa*)

T Susilowati, Desrina, J Hutabarat, S Anggoro, M Zainuri, Sarjito, F Basuki and T Yuniarti

[+ Open abstract](#) [View article](#) [PDF](#)

OPEN ACCESS 012017

The Effect of maceration period on contents and color brightness of phycoerythrin from *Gracilaria* sp.

H Lidiana, L Sulmartiwi and S Andriyono

[+ Open abstract](#) [View article](#) [PDF](#)

The effects of salinity 1/4 ^ v x

OPEN ACCESS 012018

Culture of *Daphnia* sp. (crustacean – cladocera): the effect of manure variation on the growth, natality, and mortality

H Herman, Y Andriani, A Sahidin, T Hidayat and T Herawati

[+ Open abstract](#) [View article](#) [PDF](#)

OPEN ACCESS 012019

The effects of salinity and temperature shock on *Kappaphycus alvarezii* seaweed spores release

F K Harwinda, W H Satyantini and E W Masithah

[+ Open abstract](#) [View article](#) [PDF](#)

OPEN ACCESS 012020

Effectivity of immunostimulant from *Zoothamnium penaei* protein membrane for decreasing the mortality rate of white shrimp (*Litopenaeus vannamei*) in traditional plus pond

G Mahasri, R Kusdarwati, Kismiyati, Rozi and H Gustrifandi

[+ Open abstract](#) [View article](#) [PDF](#)

OPEN ACCESS 012021

The fecundity of fork-tailed threadfin bream (*Nemipterus furcosus*) in Bangka, Bangka Belitung

E Utami, E Safitriyani and Leo Gatra Persada

[+ Open abstract](#) [View article](#) [PDF](#)

OPEN ACCESS 012022

The effect of *Chaetoceros calcitrans* extract on hematology common carp (*Cyprinus carpio*) infected by *Aeromonas salmonicida*

Maftuch, N D A Wulan, H Suprastyani, E Wijayanto, M Noercholis, A A Prihanto and A Kurniawan

[+ Open abstract](#) [View article](#) [PDF](#)

OPEN ACCESS 012023

The motility and motion duration of jatimbulan tilapia (*Oreochromis niloticus*) spermatozoa in different salinity

J Triastuti, D Kintani, E M Luqman and D Y Pujiastuti

[+ Open abstract](#) [View article](#) [PDF](#)

OPEN ACCESS 012024

Immune response and parasitic infestation on Pacific white shrimp (*Litopenaeus vannamei*) in immuno-probio circulation system (SI-PBR) in ponds

G Mahasri, P D W Sari and Prayogo

[+ Open abstract](#) [View article](#) [PDF](#)

OPEN ACCESS 012025

The effects of different concentrations of ccBA-GFP promoter with electroporation methods on the quality of koi sperm (*Cyprinus carpio* var. koi)

PAPER • OPEN ACCESS

The effects of salinity and temperature shock on *Kappaphycus alvarezii* seaweed spores release

To cite this article: F K Harwinda *et al* 2018 *IOP Conf. Ser.: Earth Environ. Sci.* **137** 012019

View the [article online](#) for updates and enhancements.

Related content

- [Alternative bioenergy through the utilization of *Kappaphycus alvarezii* waste as a substitution of substrate for biogas products](#)
R Yulita, Agustono, D Y Pujiastuti et al.
- [Genetic diversity of the causative agent of ice-ice disease of the seaweed *Kappaphycus alvarezii* from Karimunjawa island, Indonesia](#)
E Syafitri, S B Prayitno, W F Ma'ruf et al.
- [Infection *Vibrio* sp. Bacteria on *Kappaphycus* Seaweed Varieties Brown and Green](#)
Yuni Irmawati and Fien Sudirjo

The effects of salinity and temperature shock on *Kappaphycus alvarezii* seaweed spores release

F K Harwinda¹, W H Satyantini², E W Masithah³

¹ Aquaculture, Faculty of Fisheries and Marine Airlangga University, Surabaya 60115

² Departement of Fish Health Management and Aquaculture, Faculty of Fisheries and Marine Airlangga University, Surabaya 60115

³ Departement of Marine, Faculty of Fisheries and Marine Airlangga University, Surabaya 60115

E-mail: farizkukuh@hotmail.com

Abstract. One of the reproductive aspects of development step that is considered as the solution of this issue is seaweed sporulation technique through which is induced through salinity and temperature shock. This study aims to determine the effect of combination and interaction of salinity and temperature shock on the release of *K. alvarezii* spores in order to produce superior seeds. This research was conducted using Complete Randomized Design Factorial which consists of nine combinations of treatments and three replications. The used treatment in this study is the combination of different environmental factors such as salinity shock and temperature shock. The data were analyzed using ANOVA (Analysis of Variance) followed by Duncan Multiple Range Test. The results showed that salinity (31 ppt, 33 ppt, and 35 ppt) and temperature (30°C, 32°C, and 34°C) shock affected the osmoregulation system and the release of *K. alvarezii* spores. The salinity shock and temperature shock had interaction with *K. alvarezii* spore release on the sixth and seventh day with the best treatment at 32°C temperature and 31 ppt salinity and released 5413 cells/ml spores on the seventh day.

1. Introduction

Seaweed as a fishery commodity that produces carrageenan has an important role in the industrial sector. It is much utilized in the food industry, cosmetics, pharmaceutical, and other industries such as the paper industry, textiles, photography, pasta, and fish canning [1]. The current market demand for *Kappaphycus alvarezii* has increased each year in line with the development of seaweed processing industry in Indonesia. The Ministry of Marine and Fisheries expects that the cultivation of seaweed and the processing industry sector can be developed to compete in the world market. [2] stated the efforts to increase the production of *K. alvarezii* require the availability of superior seaweed seed continuously.

Since 1970, the seed of *K. alvarezii* has always been obtained from vegetative reproduction. The repetitive clonal of vegetative development will result in a reduction in genetic variability, leading to the fall in the growth rate, levels of carrageenan, and gel strength [2]. Based on that reason, the development of reproductive aspects needs to be considered in order to increase productivity. One of the aspects of reproductive development step is the growing of seed through seaweed sporulation. In addition, [3] stated that the reproduction using spores is considered to be more efficient, fast-growing,



and capable of producing superior seeds. It is also explained that there is a possibility of genetic engineering that could be done through spores reproduction [4]

However, reproduction by using spores depends on the season in which the release of spores is very rare. The reproductive cycle of *K. alvarezii* happens only once a year with the release of spore in August to September [5]. Therefore, research on the implementation of environmental manipulation in the provision of sustainable seaweed seeds throughout the year needs to be conducted.

It is explained that the release and germination of *K. alvarezii* seaweed spores are influenced by biotic and abiotic components [6]. Factors of the abiotic component are one of the factors that needs to be developed in the application. Some influential abiotic components in the reproduction of the seaweed are salinity, temperature, light, pH, and waves [7]. Temperature and salinity are important factors that determine the growth and reproduction of seaweed [2]. The rise or decline in the level of salinity could influence the turgor pressure that will induce seaweed to do an osmotic adjustment [8]. Meanwhile, temperatures have a fundamental effect on chemical reactions and metabolism level of seaweed. Both of these factors greatly affect the release of seaweed spores.

Thus, research on the effect of the application of salinity and temperature shock on spores release and germination is needed so that the optimal combination of temperature and salinity shock to produce *K. alvarezii* superior and sustainable seeds could be identified and understood.

2. Methodology

2.1. Research time and place

This research was conducted from February to March 2017 at Seaweed Tissue Culture Laboratory, Marine Aquaculture Development Center Lombok.

2.2. Materials

The equipments used in this study were petridish, stopwatch, thermostat heater, aerator set, bottles with a diameter of 5 cm and height of 12 cm, an aquarium with a length of 60 cm, width of 30 cm and height of 30 cm, stereo microscopes, pipette, a beaker glass, hand counters, Sedgwick Rafter counting cell and thermometer. The research materials used were fresh water, sea water, *K. alvarezii* seaweed obtained from Lombok island.

2.3. Procedures

K. alvarezii seaweed was obtained from Gerupuk, Lombok. The first stage before doing the temperature and salinity shock towards *K. alvarezii* seaweed spores was the selection of seeds. Seaweed seedling selection was done to obtain eligible explant to be reproduced, cultivated and tissue cultured. *K. alvarezii* seaweed from nature were acclimatized in the aquarium for a week. Acclimatization in greenhouses was done by moving the seaweed on media containing sea water in aquarium.

The minimum size of the aquarium used was 90 cm x 30 cm x 35cm with a recirculating water system. A recirculation system was implemented using a multilevel aquarium. The arrangement of the aquarium water temperature allows the sea-floor to remain stable because the heat of the sun was covered by the aquariums placed above.

An increase of temperature of water in a beaker glass was done using a commercial thermostat to regulate the temperature [9]. Salinity shock treatment was done using three different salinity levels at each beaker glass. Certain salinity obtained by giving a certain appropriate weight of salts with the desired salinity. It is in accordance with Ask [10] that used this comparison:

$$\text{Salinity (ppt)} = \frac{\text{Salt Concentration (gr)}}{\text{Volume of Water (1 L)}} \quad (1)$$

Before the treatment was done in mini media (petridish), seaweed was washed with sea water, cleaned from other algae and attached dirt. Seaweed used as a sample in the shock process was the one

having sporophyte. The making of sterile seaweed explant was done by selecting the thallus and sterilizing the thallus. The sterilization process was conducted according to Harley [2] with some modifications. The steps are: (1) the young thallus was cut with the length of 5 cm using scalpel and tweezers on sterilized petridish, then rinsed with sterile sea water twice; (2) the thallus or explant were soaked for 8-10 minutes in a solution of liquid soap with a concentration of 2 drops per 200 ml, and then rinsed with sterile sea water 2 times; (3) explant were soaked for 2-3 minutes in 100 ml of seawater containing Povidone Iodine 1 % (10 ml of Betadine and 90 ml of sterile sea water), then rinsed two times with sterile seawater; (4) the explant were dried with paper towels and put into sterile media shock treatment temperature and salinity.

2.4. Environmental shock

The media used for the temperature and salinity shock treatment was sea water with different salinity levels and a certain temperature in a beaker glass. The salinity and temperature shock treatment were given with an increase in salinity i.e. 31 ppt, ppt, 33 and 35 ppt at different temperatures i.e 30°C, 32°C, and 34°C.

The temperature and salinity shock treatment were done by putting the selected and cleaned thallus explant to beaker glasses, 6 explants for each beaker glass. Temperature and salinity shock was done for 30 minutes. After that, the seaweed was restored into a culture bottle of 100 ml with original water conditions on a rotary shaker for 7 days with a room temperature of 22-25°C and 1500 lux fluorescent light for 12 hours of light and 12 hours of dark.

Seaweed spores were counted using Sedgwick Rafter counting chamber [11]. The calculations were performed every day during the maintenance period after treatment to observe the number of spores released per day. The calculation was done based on the formula used by Bindu [12]:

$$\text{Cells/ml} = \frac{\text{Counted cells} \times 1000 \text{ mm}^3}{A \times D \times F} \quad (2)$$

Description:

A = Area of field

D = Depth of Sedgwick Counting Cell

F = Counted fields

2.5. Data analysis

The data of released spores yield obtained from the results of this research were analyzed using ANOVA (Analysis of Variance) to identify whether there was a difference of each treatment, according to the research experimental design used. The analysis of multiple distance trials was followed by Duncan with the SPSS program. Further tests using Test Duncan were needed to compare the treatments.

3. Result and Discussion

The results of the variant analysis show that there is no significant difference ($p > 0.05$) on the interaction of temperature and salinity shock treatment on the first day until the second day, while the third to seven days shows a significant difference ($p < 0.05$). The result of the *K. alvarezii* spores release is shown in table 1.

K. alvarezii spores had been released gradually every day. Seaweed thallus used as samples has different spore release responses. A3B2 treatment showed exponential phase on the second day, while other treatments experienced exponential phase on the fourth day. A1B2, A3B1, and A3B2 treatment showed declination phase on the sixth day, while the other treatments had not showed declination phase until the seventh day of observation.

The temperature and salinity shock treatment influenced spore releases significantly. Seaweed spores had also been released gradually during the 7 days of observation. According to Clesceri [6],

some abiotic components such as salinity, temperature, light, pH, current and waves are able to affect the reproductive system of seaweed. The results of the variant analysis showed that the given treatment had no significant difference ($p > 0.05$) on the interaction of temperature and salinity shock treatment on the first day to the fourth day, while on the fifth day to seven shows a significant difference ($p < 0.05$). This indicates that the spores of seaweed have a cell maturation phase before being released into the environment. The discharge of spores has a gradual releasing system which is divided into several processes such as spores formation, spores maturation, and spores release. These processes are strongly influenced by factors such as changes in temperature, salinity, and other abiotic components [2].

Spore release yield, shown in figure 1. and table 1., indicates that there are fluctuations and the phase of spores beginning to release. It also shows significant differences, indicating that the release of spores has a certain pattern, and does not directly occur after experiencing the stress on the environment. In addition, the data showed that the *K. alvarezii* seaweed needs a process for certain days to be released. It is in accordance with Ask [10] who mentioned that the release, growth and germination process of seaweed spores can be observed after five days. *K. alvarezii* seaweed spores experienced a maturation process before they were released. The transition process of spore filaments formation consists of thin layer formation, filament elongation, and formation of vegetative conchospore (spore) which is strongly influenced by the extreme change in temperature [13].

Table 1. *Kappaphycus alvarezii* seaweed spores release during 7 days

| | Amount of Released <i>K. alvarezii</i> Spores (cell/ml) \pm SD | | | | | |
|------|--|------------------------------------|--------------------------------------|--|---|---|
| | Day 2 | Day 3 | Day 4 | Day 5 | Day 6 | Day 7 |
| A1B1 | 132,67 ^a \pm 37,52 | 123,83 ^a \pm 30,63 | 123,83 ^a \pm 30,63 | 3078,03 ^c \pm 1518,71 | 4484,39 ^{abc} \pm 37,49 | 4953,15 ^{dc} \pm 457,56 |
| A1B2 | 141,52 ^{ab} \pm 30,69 | 159,21 ^a \pm 75,05 | 159,21 ^a \pm 53,07 | 1362,06 ^{abc} \pm 220,96 | 4970,89 ^c \pm 353,35 | 1804,34 ^{abc} \pm 1276,94 |
| A1B3 | 238,81 ^{ab} \pm 37,52 | 159,21 ^a \pm 51,05 | 106,14 ^a \pm 75,05 | 424,56 ^a \pm 231,32 | 2998,45 ^{ab} \pm 37,52 | 3856,33 ^{cde} \pm 1649,73 |
| A2B1 | 159,21 ^a \pm 75,05 | 212,28 ^a \pm 53,07 | 106,14 ^a \pm 75,05 | 2618,06 ^{bc} \pm 81,05 | 4033,29 ^{abc} \pm 675,43 | 5413,06 ^e \pm 414,49 |
| A2B2 | 238,81 ^{ab} \pm 37,52 | 300,73 ^a \pm 30,63 | 132,67 ^a \pm 37,52 | 618,98 ^{ab} \pm 110,67 | 371,49 ^a \pm 243,19 | 1450,55 ^{ab} \pm 615,06 |
| A2B3 | 159,21 ^{ab} \pm 53,07 | 159,21 ^a \pm 53,07 | 212,28 ^a \pm 140,41 | 902,17 ^{ab} \pm 424,53 | 689,91 ^{ab} \pm 53,07 | 2794,96 ^{abcd} \pm 425,65 |
| A3B1 | 106,14 ^a \pm 51,79 | 123,83 ^a \pm 30,63 | 371,49 ^a \pm 231,32 | 1892,77 ^{abc} \pm 429,00 | 2282,01 ^{abc} \pm 265,35 | 919,86 ^a \pm 376,48 |
| A3B2 | 283,04 ^b \pm 82,39 | 972,9 ^b \pm 391,14 | 1406,34 ^b \pm 712,98 | 1432,83 ^{abc} \pm 486,36 | 3060,37 ^{abc} \pm 1648,87 | 1468,23 ^{ab} \pm 1327,09 |
| A3B3 | 212,28 ^{ab} \pm 54,93 | 247,66 ^a \pm 61,27 | 636,84 ^{ab} \pm 231,32 | 3378,75 ^c \pm 2869,85 | 3414,12 ^{bc} \pm 963,07 | 3325,69 ^{bcd} \pm 2575,01 |

A1B1 = Temperature 30°C (A1) dan Salinity 31 ppt (B1) A2B3 = Temperature 32°C (A2) dan Salinity 34 ppt (B3)
A1B2 = Temperature 30°C (A1) dan Salinity 33 ppt (B2) A3B1 = Temperature 34°C (A3) dan Salinity 31 ppt (B1)
A1B3 = Temperature 30°C (A1) dan Salinity 35 ppt (B3) A3B2 = Temperature 34°C (A3) dan Salinity 33 ppt (B2)
A2B1 = Temperature 32°C (A2) dan Salinity 31 ppt (B1) A3B3 = Temperature 34°C (A3) dan Salinity 34 ppt (B3)
A2B2 = Temperature 32°C (A2) dan Salinity 33 ppt (B2)

Temperature and salinity shock treatment simultaneously showed a significant difference on day three to seven. The results of Duncan Multiple Distance Test on day three to five showed that an increased temperature shock to 34°C could give a significant influence on the release of spores. In addition, the data of thallus weight decrease indicate that the higher the temperature, the higher the thallus lose its water from within. Seaweed thallus weight-loss can be seen in table 2. Temperature has a fundamental effect on the degree of chemical reactions, reproduction, and metabolism of seaweed [8]. The effect of

high-temperature shock will gradually affect photosynthesis, respiration, membrane stability and physiological changes [14]

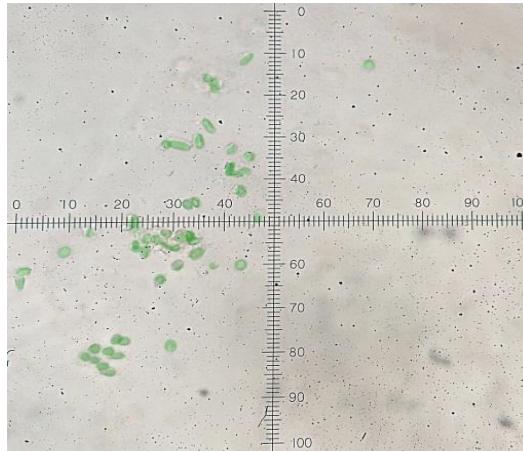


Figure 1. Released spores from seaweed *K. alvarezii* Thallus with 200x magnification.

Rising temperatures in the form of temperature shock treatment also elevated the cell membrane activity and water flow in plants. The rise in temperatures will increase water flow in plants that will further enhance the turgor pressure within the plant cell [15]. It urged the cell to increased pressure from within. Then, the fluid within the cell is pushed to out. This term is called osmosis. In addition, a decrease in the weight of the thallus of *K. alvarezii* also caused the cell membrane to loose which will simplify the osmosis process. Meanwhile, the higher temperature could loose the pores on the surface of the plants [16]. When the pores which are considered as semipermeable membrane open up wider, the water-loss level will be higher [17]. This condition causes the plants to lose more fluids and pushes the spores to be discharged. The influence of force, pressure, and the weakening of the liquid on the layers of the skin pore could trigger algae cystocarp to force the seaweed spores to discharge through the venturi tube [18].

Salinity shock treatment has a significant difference and the best result was shown by 31 ppt salinity. The Duncan test showed that during the fifth day to the seventh day, 31 ppt salinity was very influential on the release of spores with the largest results. Seaweed spores can be released optimally on the salinity range of 30 ppt [19]. The development of good seaweed spores occurs in the range of salinity of 30 ppt [20]. The release of seaweed spores also has a narrow salinity range. It is also stated that the most suitable salinity for *K. alvarezii* spores to release is in the range of 29-34ppt. In addition, the thallus weight decrease data indicate that the higher the salinity, the higher thallus loses its water from within. The result of weight-loss of the thallus can be seen in table 2. This indicates that there is a presence of osmoregulation activity within seaweed cells. It is also considered as the most effective treatment in the weight-loss of *K. alvarezii* seaweed. Salinity shock directly affects the osmoregulation system on seaweed. The increase in salinity will directly increase the concentration of seawater correspondingly. So, the osmotic pressure will change differently. Increased salinity of sea water will result in the loss of water and ion absorption of the thallus. The entire process caused the change in osmotic pressure so that the seaweed will suffer osmosis. If the concentration of the environment outside the cell is higher than the concentration within the cell, this difference will cause the water to shrink out [8]. This progressive water-loss will be correspondingly loosening the space among the cells.

Table 2. Weight loss of *Kappaphycus alvarezii* thallus.

| | Given Treatment | | Thallus Weight Reduction (gr) ± SD |
|------|------------------------|----------------------|------------------------------------|
| | Temperature Shock (°C) | Salinity Shock (ppt) | |
| A1B1 | | 31 | 0 ^a ± 0 |
| A1B2 | 30 | 33 | 0,016 ^b ± 0,005 |
| A1B3 | | 35 | 0,026 ^c ± 0,005 |
| A2B1 | | 31 | 0,013 ^b ± 0,005 |
| A2B2 | 32 | 33 | 0,026 ^c ± 0,005 |
| A2B3 | | 35 | 0,036 ^d ± 0,005 |
| A3B1 | | 31 | 0,013 ^b ± 0,005 |
| A3B2 | 34 | 33 | 0,026 ^c ± 0,005 |
| A3B3 | | 35 | 0,070 ^e ± 0,010 |

A1B1 = Temperature 30°C (A1) dan Salinity 31 ppt (B1) A2B3=Temperature 32°C (A2) dan Salinity 34 ppt (B3)
A1B2 = Temperature 30°C (A1) dan Salinity 33 ppt (B2) A3B1 = Temperature 34°C (A3) dan Salinity 31 ppt (B1)
A1B3 = Temperature 30°C (A1) dan Salinity 35 ppt (B3) A3B2 = Temperature 34°C (A3) dan Salinity 33 ppt (B2)
A2B1 = Temperature 32°C (A2) dan Salinity 31 ppt (B1) A3B3 = Temperature 34°C (A3) dan Salinity 34 ppt (B3)
A2B2 = Temperature 32°C (A2) dan Salinity 33 ppt (B2)

Disruption of the function of the plant cell wall is affected by the role of Golgi apparatus that are not optimal so that the cells will undergo osmosis. According to Davis [21], a different concentration of the liquid inside and outside the cell will push the Golgi apparatus to continue to strive balancing the nature until the environment condition gets isotonic. The cell will become increasingly dense, but the size will stay or become relatively smaller than the size of the previous condition [22].

The results of this research show that temperature and salinity affect the osmoregulation and release of spores. The results of the variant analysis showed that the interaction of temperature and salinity could obtain the biggest amount of spore cells on the seventh day with the A2B1 treatment. This treatment, with a temperature of 32°C and 31 ppt salinity, could obtain 5413.06 cells/ml. It shows the positive interaction between the two factors. Temperature and salinity are the factors that interact in giving the influence of seaweed physiology and reproduction. The temperature and salinity factors correspondingly interact with significant spores release. Seaweed reproductive system chain is affected by some combination of biotic and abiotic factors [6]. Temperature and salinity are the most important abiotic component factors which determine the growth and reproduction of seaweed [7].

K. alvarezii spores release is closely related to seaweed physiological system and environmental factors. The osmosis from seaweed cell, which is caused by the different concentration of the environment and spaces between cells that loosen, will carry spores out. The opening of the cystocarp pores will force seaweed spores to be released through the venturi tube with the influence of force, pressure, and the weakening of the adhesive liquid on the skin layer of algae [18]. Environmental factors such as temperature and salinity affect the connection between cells (the pit connection) to detach and release the reproduction cell [22].

4. Conclusion

Based on the discussion, it can be concluded that environmental manipulation using salinity and temperature shock have several effects on osmoregulation system and *K. alvarezii* spores release with 31 ppt salinity on the fifth day to the seventh day and 30°C temperature on the sixth day and seventh day. The addition of salinity and temperature shock also have an interaction with the release of *K. alvarezii* spores on the third day to the seventh day with A2B1 as the best treatment. A2B1 is the combination of 32°C temperature shock and 31 ppt salinity shock that could produce 5413.06 cells/ml

on the seventh day. The temperature and salinity shock can be used as the candidate of *K. alvarezii* seaweed reproductive method to obtain superior seeds which can be used for fishery development.

5. References

- [1] Jaya D, Hadi F, Kusumasari D and Riswardani E 2012 *Drying carrot (Daucus carota) by dehydration osmosis* (Jakarta : National Seminar on Chemical Engineering Soebardjo Brotohardjono) **11** 1-6
- [2] Harley C D G, Anderson K M, Demes K W, Jorve C P, Kordas R L and Coyle T A 2012 *J Phycol.* 1-15
- [3] Bulboa C, De Paula E J and Chow F 2008 *Phycol. Res* **56** 39-45
- [4] Ask E I, Batibasaga A, Zertuche-González J A and de San M 2003 *Kappaphycus alvarezii Introduction* pp 49-57
- [5] Agrawal S C 2009 *Folia Microbiol* **54** 273-302
- [6] Clesceri L S, Greenberg A E and Eaton A D 1999 *Standard methods for the examination of water and wastewater* (America : American Public Health Association, American Waterworks Association, and Water Environment Federation) 2671 p.
- [7] Giplin M 1991 *Biol. J. Linn. Soc.* **42** 165-175.
- [8] Azanza R V and Ask E I 2001 *Int. Seaweed Sym.* 1-10
- [9] Arisandi A, Marsoedi, Nursyam H and Sartimbul A 2011 *Ilm. Kel* **16** 143-150 (In Indonesia)
- [10] Ask E I and Azanza R V 2002 *J. Aquac.* **206** 257-277.
- [11] Azanza-Corrales R, Mamauag S S, Alfiler E and Orolfo M J 1993 *J. Aquac.* **103** 29-34.
- [12] Bindu M S and Levine I A 2011 *J Appl. Phycol.* **23** 789-796.
- [13] Jensen R D and Taylor S A 1961 *Plant Physy.* **171** 639-642
- [14] Dickson L G and Waaland J R 1985 *Planta.* **165** 548-553.
- [15] Guiry M D and Cunningham M H 1984 *Phycologia* **23** 357-367.
- [16] Davis T W, Berry D L, Boyer G L and Gobler C J 2009 *Harm. Algae* **8** 715-725.
- [17] Guzmán-Urióstegui A and Robledo D 1999 *J. Hydrobiol.* **389/399** 285-290.
- [18] Hurtado A Q and Cheney D P 2003 *Bot. Mar.* **46** 338-341.
- [19] Hay M E 1991 *Academic Press Inc. North Carolina* 96-108.
- [20] Anggraeni S R, Sudarsono and Soedharma D 2008 *Bionatura* **10** 196-208. (In Indonesia)
- [21] Forslund H 2009 *Grazing and the geographical range of seaweeds : the introduced fucus evanescens and the newly described fucus radicans* (Sweden : Licentiate Thesis. Stockholm University) 30 p.
- [22] Dhargalkar V K and Kavlekar D 2004 *Seaweeds – A Field Manual* (Dona Paula : National Institute of Oceanography) 42 p.

Acknowledgement

This research is dedicated to Indonesia future seaweed aquaculture. I would also like to thank all of the supervisors and Faculty of Fisheries and Marine, Universitas Airlangga.