

The significance of amelogenin loci from toothpicks as forensic evidence for sex determination

by Arofi Kurniawan

Submission date: 29-Dec-2022 12:05PM (UTC+0800)

Submission ID: 1987210523

File name: Scopus_2022_The_significance_of_amelogenin.pdf (1.11M)

Word count: 4197

Character count: 21612



Taibah University

Journal of Taibah University Medical Sciences

www.sciencedirect.com



Original Article

The significance of amelogenin loci from toothpicks as forensic evidence for sex determination



Arofi Kurniawan, DDS, PhD^{a,*}, Beta N. Rizky, DDS, MSc^{a,*},
An'nisaa Chusida, DDS, MDSc, PhD^a, Beshlina F.W.R. Prakoeswa, DDS, MSc^a,
Salma A. Athalia, BDS^b, Stefani T.J. Malau, BDS^b and Aspalilah Alias, DDS, PhD^{c,d}

^a Department of Forensic Odontology, Faculty of Dental Medicine Universitas Airlangga, Surabaya, Indonesia

^b Undergraduate Study Program, Faculty of Dental Medicine, Universitas Airlangga, Surabaya, Indonesia

^c Department of Basic Sciences and Oral Biology, Faculty of Dentistry, Universiti Sains Islam Malaysia, Kuala Lumpur, Malaysia

^d Forensic Odontology Unit, Department of Imaging & Pathology, KU Leuven, Belgium

Received 12 April 2022; revised 12 July 2022; accepted 24 July 2022; Available online 13 August 2022

المخلص

أهداف البحث: أصبح تحليل الحمض النووي الريبي منقوص الأكسجين هو المعيار الذهبي في التعرف على الأفراد من خلال فحص الطب الشرعي. هناك العديد من المصادر الأولية والثانوية لعينات الحمض النووي في مجال الطب الشرعي. تشمل المصادر الثانوية العناصر التي يستخدمها الشخص مثل الملابس وفرشاة الأسنان وأعواد الأسنان. في الدول الآسيوية مثل كوريا واليابان وإندونيسيا، ينتشر استخدام أعواد الأسنان. يمكن استخدام طرف عود الأسنان المستخدم في تنظيف جزئيات الطعام في المناطق بين الأسنان لالتقاط عينات من الحمض النووي من اللعاب. استخدام عينات اللعاب لتحليل الحمض النووي في تحديد الجنس يعتمد على التكرار الترادفي القصير مع موضع الأميلوجينين. الغرض من هذه الدراسة هو فحص تركيز ونقاء الحمض النووي على أعواد الأسنان كدليل في التحقيقات الجنائية، بالإضافة إلى إمكانية استخدامه لتحديد الجنس.

طرق البحث: تم توجيه ثمانية أشخاص لتنظيف الجانب البيني لأسنانهم الخلفية باستخدام عود أسنان. علاوة على ذلك، تم الاحتفاظ بكل عينة من أعواد الأسنان لمدة صفر يومًا (كعنصر تحكم)، و 14 يومًا، و 20 يومًا. تم تحديد النقاء وتركيز الحمض النووي لكل عينة من خلال فحص الحمض النووي. بعد تحديد تركيز ونقاء الحمض النووي من كل عينة، تم إجراء الرحلان الكهربائي في مواضع الأميلوجينين لتحديد الجنس.

النتائج: أظهرت هذه الدراسة أن متوسط تركيز الحمض النووي في أعواد الأسنان تراوح بين 425.25 - 796.25 ميكروغرام / مل. متوسط نقاء الحمض النووي في هذه الدراسة يتراوح بين 1.09 - 1.13 ميكروغرام / مل. ينتج جين الأميلوجينين 112 زوج قاعدي و 116 زوج قاعدي من المضمخ النووي من الكروموسومات إكس و واي.

الاستنتاجات: يمكن تحديد الجنس باستخدام الحمض النووي باستخدام موضع الأميلوجينين، وهو بروتين موجود في الكروموسومات الجنسية (إكس و واي). لا يزال من الممكن استخدام قيمة تركيز الحمض النووي لعود الأسنان في هذه الدراسة لدعم الطب الشرعي بعد 20 يومًا في درجة حرارة الغرفة.

الكلمات المفتاحية: أميلوجينين؛ تحليل الحمض النووي؛ العدل؛ الهوية القانونية؛ تحديد الجنس

Abstract

Objective: DNA analysis has become the gold standard of all identification methods in forensic science. There are several primary and secondary sources of DNA samples in the field of forensics. Primary sources can be obtained directly from individuals, whereas secondary sources of DNA samples include items used by someone such as clothes, toothbrushes, and toothpicks. In Asian countries such as Korea, Japan, and Indonesia, toothpicks are often used, as the tip of toothpicks used to clear food particles in the interdental regions can be utilized to capture DNA samples from saliva. The use of saliva samples for DNA analysis in sex identification is based on short tandem repeats with the amelogenin (AMG) locus. The purpose of this study was to examine the concentration and purity of DNA on toothpicks as

* Corresponding address: Faculty of Dental Medicine, Airlangga University, Jl. Prof. Dr. Moestopo 47 Surabaya, Indonesia.

E-mail: betanoviarizky@gmail.com (B.N. Rizky)

Peer review under responsibility of Taibah University.



Production and hosting by Elsevier

1658-3612 © 2022 Taibah University.

Production and hosting by Elsevier Ltd. This is an open access article under the CC BY-NC-ND license (<http://creativecommons.org/licenses/by-nc-nd/4.0/>). <https://doi.org/10.1016/j.jtumed.2022.07.010>

evidence in criminal case investigations, as well as its potential as sex determination material.

Methods: Eight subjects were instructed to clean the interproximal side of their posterior teeth using a toothpick. Each toothpick sample was kept for 0 days (as a control), 14 days, and 20 days. The purity and DNA concentration of each sample were determined through DNA examination. After determining the concentration and purity of DNA from each sample, electrophoresis of the AMG loci was performed for sex determination.

Results: This study showed that the average concentration of DNA on toothpicks ranged from 425.25 to 796.25 µg/ml, and the average purity of DNA ranged from 1.09 to 1.13 µg/ml. The AMG gene produces 112 and 116 base pair amplicons from the X and Y chromosomes.

Conclusion: Sex determination using DNA can be done using AMG loci, a protein found on the sex chromosomes (X and Y). The value of DNA concentration on toothpicks could be used to support forensic identification after 20 days at room temperature.

Keywords: Amelogenin; DNA analysis; Justice; Legal identity; Sex determination

© 2022 Taibah University.
Production and hosting by Elsevier Ltd. This is an open access article under the CC BY-NC-ND license (<http://creativecommons.org/licenses/by-nc-nd/4.0/>).

Introduction

DNA is the smallest unit of organisms.^{1,2} In the last three decades, DNA analysis has become an important tool in forensic science. DNA profiling is based on short tandem repeats (STRs) and aids in human identification from biological samples. It is a reliable and robust identification parameter, and is also legally accepted as evidence in criminal cases.^{3,4,5} There are two types of DNA sources in the field of forensic sciences: primary and secondary. Primary DNA sources can be obtained directly from individuals, whereas secondary sources can be collected from a person's relatives. Body fluids such as saliva, blood, semen, and urine represent important components in DNA human identification.⁶

Forensic DNA examination for sex determination is frequently required for disaster victim identification, missing person investigations, and sexual assault cases. Y-specific target sequence analysis on the Y chromosome is an effective method for sex determination and estimating the ratio of male to female DNA in mixed forensic samples.^{6,7} DNA is generally used to solve crimes in one of two ways. When a suspect is identified, a DNA sample from that person can be compared to evidence from the crime scene. The results of this comparison may aid in determining whether the suspect committed the crime. In

cases where a suspect has not yet been identified, biological evidence from the crime scene can be analyzed and compared to offender profiles in DNA databases to assist in identifying the perpetrator. Crime scene evidence can also be linked to other crime scenes through the use of DNA databases.^{8,9}

In forensic situations involving mass disasters, transportation accidents, missing persons, or sexual assault, sex determination can be helpful. The DNA of the victim can be used to track down the remains of a corpse utilizing samples from numerous sources such as teeth, oral epithelial tissue, and saliva. Amelogenin (AMG) is a sex typing marker that is commonly utilized. AMG is an epithelial protein whose gene is found on both the X and Y chromosomes.¹⁰ Due to variation in the X and Y chromosomes, a group of proteins may be utilized to identify sex.¹¹

Every object at the crime scene has important meaning as forensic evidence. This includes everything used by the perpetrator or victim for the last time such as clothes, combs, toothbrushes, toothpicks, miswak, and tableware.¹² Objects exposed to saliva are good DNA sources for forensic identification. Saliva collection is considered a robust, non-invasive procedure for obtaining samples both in the laboratory and field.^{10,11}

The presence of food remnants, dental plaque, and calculus in the oral cavity shows the degree of oral hygiene. The miswak and toothpicks are the most widely used tooth cleaning instruments.^{12,13,14} Toothpicks are commonly used in Asian countries such as China, Korea, Japan, and Indonesia.^{16,17} The Ministry of Health of Indonesia also recommends toothpicks as one of the interdental cleaning instruments.^{2,15} DNA samples from saliva can be easily collected from the tip of toothpicks that are used to remove food debris in the interdental areas.^{18,19}

DNA sex determination has opened new avenues of exploration for modern forensic studies. The application of DNA examination using saliva samples in sex determination is based on STRs with AMG loci.²⁰ This study aims to determine the quantity and quality of DNA on toothpicks as evidence in criminal investigations. Then an appropriate quantity and quality of the DNA were examined for sex determination through electrophoresis of AMG loci.

Materials and Methods

This study was conducted in the Human Genetic Laboratory of Universitas Airlangga (Surabaya, Indonesia). Eight subjects (four males and four females) who met the following inclusion criteria participated in this study: aged 18–23 years old, with complete permanent posterior teeth and no severe crowding of the anterior and posterior teeth. The number of samples in this study was limited because this study was conducted during the coronavirus disease 2019 (COVID-19) pandemic, so we were constrained in taking samples from the oral cavity. We carried out sampling according to strict health protocols.

Each subject was asked to eat fibrous foods and drink mineral water. Then they were instructed to clean the interdental surfaces of the posterior teeth with the toothpicks

provided. The process of cleaning the interdental surfaces was repeated three times with different toothpicks. Each toothpick sample was placed in an envelope, kept at room temperature, and divided into three groups: Group A (control day 0), Group B (day 14), and Group C (day 20). As the control sample, DNA quality and quantity were directly examined in Group A, while Groups B and C were stored for 14 and 20 days, respectively. All samples were stored in controlled conditions at a room temperature of 24 °C and humidity of 66%.

The DNA extraction process was started by soaking the toothpicks separately overnight in eight sterile centrifuge tubes. To dissolve and settle DNA samples from the toothpicks, each tube was filled with 5 cm³ distilled water. After 24 h, the samples were centrifuged for 10 min at 12,000 rpm. Then the supernatants were discarded. DNAzol was added to the DNA sample solution, followed by vortexing, incubating for 15 min, and centrifugation at 8000 rpm for 10 min. The supernatant was mixed with isopropanol and centrifuged for 10 min at 12,000 rpm. The pellet was washed with 70% ethanol before being centrifuged again at 12,000 rpm.²¹ Then the pellet was resuspended in 50 ml sterile aquadest before undergoing a 30 s spindown for the spectrophotometer. Final DNA extraction and isolation were performed using the Invitrogen™ DNAzol™ reagent.

The DNA purity of this study was determined using the optical density (OD) and OD260/280 ratio, and the DNA concentration was determined using a dilution factor of 700 ml (10 ml DNA and 690 ml distilled water). The DNA concentration was calculated using the following formula: OD260 dilution factor for 50 µg/ml double-stranded DNA. The results of the DNA concentration and purity tests were statistically analyzed using one-way repeated measure analysis of variance in SPSS version 20.0. In addition to determining DNA purity and concentration, visualization of AMG loci in electrophoretic gels was also performed to observe differences in base pair (bp) bands for sex determination on the DNA from toothpick samples.

Electrophoresis was performed after the acrylamide gel was prepared. The gel was made by mixing 3 cm³ acrylamide reagent (Sigma–Aldrich, St. Louis, MO, USA) with 8 cm³ Tris-borate-EDTA (TBE) Buffer 0.5× (Promega Co., Madison, WI USA) in an Erlenmeyer flask, followed by homogenization. A 200 µl solution of ammonium persulfate (Sigma–Aldrich) was added, followed by homogenization in the Erlenmeyer flask. The prepared gel solution was placed in a 0.5× TBE buffer solution electrophoresis chamber. A volume of 5 µl PCR DNA sample was pipetted into the gel column. After adding the solution, electrophoresis was performed at 100 V for 60 min to allow the negatively charged DNA to migrate to the positively charged opposite end, resulting in band contrast.

Results

The average DNA concentrations in Groups A, B, and C were 425.25, 796.25, and 531.12 µg/ml, respectively. A comparative test of DNA concentration revealed that there was a significant difference among Groups A, B, and C ($p < 0.05$). Because the p value was < 0.05 , we used the Tukey Honest Significant Difference post hoc test. The results of Groups A and B showed significant differences, but there were no significant differences between Groups A and C and Groups B and C (see Figure 1)

This study showed that, in addition to DNA concentration, the average purity of DNA in Groups A, B, and C was 1.11, 1.13, and 1.09 µg/ml, respectively (see Figure 2). The comparative test results for DNA purity revealed no significant differences among Groups A, B, and C ($p > 0.05$), so it is not used post hoc test.

The electrophoresis results of this study were visualized at the AMG loci to determine the sex of the toothpick samples. Electrophoresis was conducted with the sample with the lowest concentration to determine if the lowest concentration in this study could still be seen in DNA bands on the electrophoresis visualization results. Figure 3 shows that five

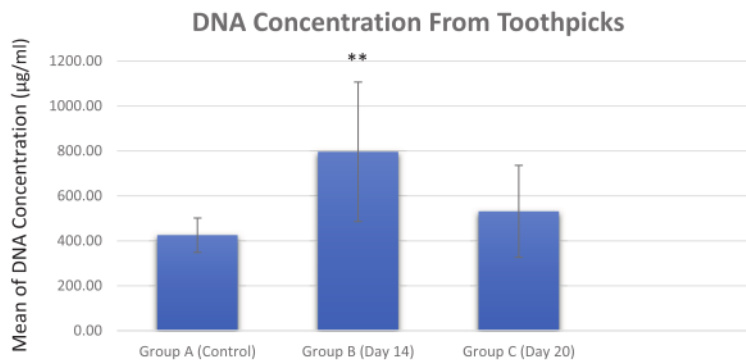


Figure 1: Descriptive analysis and one-way ANOVA with post hoc Tukey test result of DNA concentration from toothpicks. **: showed a statistically significant difference, with $p < 0.01$ vs control. DNA concentration of Group A: 425.25 ± 76.48 µg/ml; group B: 796.25 ± 309.89 µg/ml; and group C: 531.13 ± 204.88 µg/ml. The graph represents the mean ± SEM of the data.

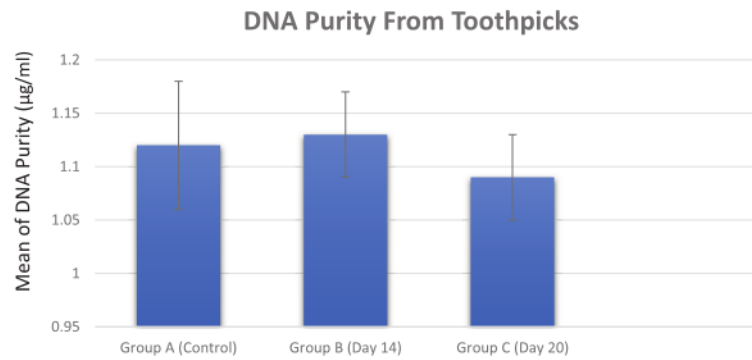


Figure 2: Descriptive analysis and one-way analysis of variance test result of DNA purity from toothpicks. The comparative test results for DNA purity revealed no significant difference, with $p = 0.703$. DNA purity of Group A: $1.12 \pm 0.06 \mu\text{g/ml}$; Group B: $1.13 \pm 0.04 \mu\text{g/ml}$; Group C: $1.09 \pm 0.04 \mu\text{g/ml}$.

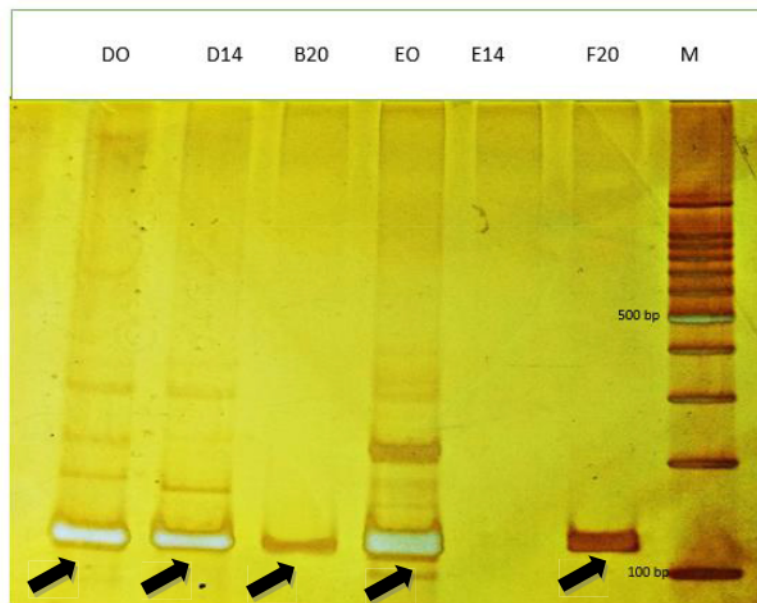


Figure 3: Electrophoresis visualization of the amelogenin loci. M = base pair (bp) marker; D0 = sample with the lowest concentration on day 0 (female). D14 = sample with the lowest concentration on day 14 (female); B20 = sample with the lowest concentration on day 20 (female); E0 = sample with the lowest concentration on day 0 (male); E14 = sample with the lowest concentration on day 14 (male); F20 = sample with the lowest concentration on day 20 (male); the arrows indicate that the amelogenin gene generates 112 bp for X and 116 bp for Y.

samples clearly showed DNA bands, while one sample did not show DNA bands at all.

Discussion

Spectrophotometry is used to determine the concentration and purity of DNA using ultraviolet absorbance ratios at 260 and 280 nm.²² A DNA purity ratio of 1.8–2 is considered good. The DNA purity ranged from 1.09 to 1.13 $\mu\text{g/ml}$ in this study, and statistical analysis revealed no

significant difference in DNA purity among Groups A, B, and C ($p > 0.05$). Previous research has determined that the minimum value of DNA purity is 1–2 $\mu\text{g/ml}$, with excellent values ranging from 1.8 to 2 $\mu\text{g/ml}$.³ This indicated that the level of DNA purity in this study met the minimum requirements and that the PCR amplification process can be continued.

It was also shown in this study that the average DNA concentration of all sample groups ranged from 425.25 to 796.25 $\mu\text{g/ml}$. This result is more valuable than that of Bharath

et al.,²³ which showed that the DNA concentration of epithelial cells in acrylic removable partial dentures was 32.37 µg/ml. Furthermore, statistical analyses revealed significant differences in DNA concentration among Groups A, B, and C ($p < 0.05$). Even though there were significant differences among sample groups, the value of the toothpick DNA concentration in this study can still be used to support forensic identification after 20 days at room temperature.

The identification process correctly identifies the victims of a disaster or incident where there are multiple fatalities or where the identity of deceased victims is in dispute before returning them to their families. Identification parameters such as sex, age, and paternity are critical in establishing an individual's identity. In forensic identification, determining the victim's sex and age can help in categorizing the victim group. Various methods have been considered reliable for sex determination, such as DNA AMG loci analysis.²⁴

The electrophoresis results at the AMG loci revealed that each sample had distinct bands. The E14 bands, however, were not visible in the sample. The reason is not that the concentration was too low. In fact of the four samples that underwent electrophoresis, sample D14 had a lower concentration but the DNA band was still clearly visible. This condition can be caused by several factors, one of which is that the annealing temperature is close to but lower than the ideal annealing temperature.²⁵ The next possibility is that DNA has been degraded. Despite the small number of DNA samples, PCR is very sensitive and only requires a small amount of DNA to produce good results. As a result, PCR works well. However, agarose gels are based on visual detection and are therefore much less sensitive. It requires much more DNA to be visualized in a gel than for a successful PCR to work.²⁶ The reason for this is that the DNA band does not appear when the electrophoresis results on the agarose gel are visualized.

The AMG gene generates 112 and 116 bp amplicons from the X and Y chromosomes, respectively. Particular observations on electrophoresis results are required to distinguish the location of the X and Y bands because they only differ by four bp, resulting in only thick bands for males (XY chromosomes) and thinner bands for females (XX chromosomes).¹ This is a shortcoming in studies of sex determination using agarose gel visualization of AMG loci. However, if the AMG test fails to determine sex, the DXYS156 loci method can be used.¹⁰ The limitation of this study was the small number of samples due to the COVID-19 pandemic.

The clinical implications and future perspectives related to this study can help support the police in determining the sex of the alleged perpetrator if the evidence is found in the form of toothpicks at the crime scene, even if discovered after 20 days.

Conclusion

Sex determination using DNA can be done using the loci of AMG, a protein found on the sex chromosomes (X and Y). The value of toothpick DNA concentration shown in this study could be used to support forensic identification after 20 days at room temperature.

Source of funding

This research was funded internally by Dental Medicine Airlangga University (No. 1689/UN3.1.2./PT/2020).

Conflict of interest

The authors have no conflicts of interest to declare.

Ethical approval

This research was approved by the Ethical Clearance Committee, Faculty of Dental Medicine, Universitas Airlangga (Permit No. 155/HRECC.FODM/III/2020).

Authors contributions

AK designed the study, analyzed and evaluated the data, wrote the first draft of the paper, and revised the final text. BNR collected the data, developed the research question, conducted a literature search and review, and critically examined the manuscript. AC developed the manuscript's methodology section, collected the data, and reviewed the final draft. The manuscript's content and similarity index are the responsibility of all authors, who have critically examined and approved the final draft. All authors have critically reviewed and approved the final draft and are responsible for the content and similarity index of the manuscript.

References

1. Yudianto A, Sisipitarsi YE. DNA isolation from human urine stain as an alternative material for personal identification examination. *Folia Med Indonesia* 2017; 52(4): 277.
2. Yudianto A, Sisipitarsi YE. Isolasi DNA dari Bercak Urine Manusia sebagai Bahan Alternatif Pemeriksaan Identifikasi personal. *MPI (Media Pharmaceutica Indonesiana)* 2017; 1(1): 53–61.
3. Rizky BN, Sylvia M, Amiatun M, Yudianto A. DNA purity and concentration analysis from toothpick as the evidence for forensic examination. *Malays J Med Health Sci* 2021; 17(4): 89–91.
4. Carvalho SPM, Sales-Peres A, Ribeiro-Bicudo LA, da Silva RHA. Quality evaluation of DNA obtained from stored human saliva and its applicability to identification in Forensic Dentistry. *Rev Odonto Ciência* 2010; 25(1): 48–53.
5. Dumache R, Ciocan V, Muresan C, Enache A. Molecular DNA analysis in forensic identification. *Clin Lab* 2016; 62(1–2): 245.
6. Gudiseva HV, Hansen M, Gutierrez L, Collins DW, He J, Verkuil LD, et al. Saliva DNA quality and genotyping efficiency in a predominantly elderly population. *BMC Med Genom* 2016; 9: 17.
7. Butler E, Li R. Genetic markers for sex identification in forensic DNA analysis. *J Forensic Invest* 2014; 2(3): 10.
8. Butler JM. The future of forensic DNA analysis. *Philos Trans R Soc B Biol Sci* 2015; 370(1674).
9. U.S. Department of Justice. Advancing justice through DNA technology: using DNA to solve crimes. Available from, <https://www.justice.gov/archives/ag/advancing-justice-through-dna-technology-using-dna-solve-crimes> 2017; 2017.

10. Maulani C, Auerkari EI. Molecular analysis for sex determination in forensic dentistry: a systematic review. *Egypt J Food Sci* 2020; 10(36).
11. Christensen AM, Passalacqua NV, Bartelink EJ. Contemporary issues in forensic anthropology. In: *Forensic Anthropology*; 2014.
12. Yudianto A, Nzilibilia SMM. Effect of room temperature and length of exposure to recover quality DNA from earphone swab-derived 126bp and 143bp mitochondrial DNA at D-loop region. *J Punjab Acad Forensic Med Toxicol [Internet]* 2019; 19(1): 100.
13. Walsh DJ, Corey AC, Cotton RW, Forman L, Herrin GL, Word CJ, et al. Isolation of deoxyribonucleic acid (DNA) from saliva and forensic science samples containing saliva. *J Forensic Sci* 2015; 37(2): 387–395.
14. Hughes SR, Chapleau RR. Comparing DNA quantity and quality using saliva collection following food and beverage consumption. *BMC Res Notes* 2019; 12(1): 165.
15. Saha S, Mohammad S, Saha S, Samadi F. Efficiency of traditional chewing stick (miswak) as an oral hygiene aid among Muslim school children in Lucknow: a cross-sectional study. *J Oral Biol Craniofacial Res* 2012; 2(3): 176–180.
16. Särner B, Birkhed D, Andersson P, Lingström P. Recommendations by dental staff and use of toothpicks, dental floss, and interdental brushes for approximal cleaning in an adult Swedish population. *Oral Health Prev Dent* 2010; 8(2): 185–194.
17. Worthington HV, MacDonald L, Poklepovic Pericic T, Sambunjak D, Johnson TM, Imai P, et al. Home use of interdental cleaning devices, in addition to toothbrushing, for preventing and controlling periodontal diseases and dental caries. *Cochrane Database Syst Rev* 2019; 4(4).
18. Emailijati K, Hamsar A, Marthias EM, Aini N. *Hubungan Penggunaan Tusuk Gigi terhadap Terjadinya Saku Gusi Kecamatan Patumbak Kabupaten Deli Serdang*; 2016. 2.
19. National Institute of Justice. *DNA evidence: basics of identifying, gathering, and transporting*; 2012. Available from: <https://nij.ojp.gov/topics/articles/dna-evidence-basics-identifying-gathering-and-transporting>.
20. Khare P, Chandra S, Raj V, Agarwal S. Salivary DNA for sex determination and forensic individualization. *J Forensic Med Toxicol* 2012; 29(1): 73–78.
21. Nzilibilia SMM, Ekodiyanto MKH, Hardjanto P, Yudianto A. Concentration and purity DNA spectrophotometer: sodium monofluorophosphate forensic impended effect. *Egypt J Forensic Sci* 2018; 8(34).
22. Van Wieren-de Wijer DB, Maitland-van der Zee AH, de Boer A, Belitser SV, Kroon AA, de Leeuw PW, Schiffers P, Janssen RG, van Duijn CM, Stricker BH, Klungel OH. Determinants of DNA yield and purity collected with buccal cell samples. *Eur J Epidemiol* 2009; 24(11): 677–682.
23. Bharath TS, Saraswathi TR, Suresh Sajjan MC, Ramchandran CR, Govindraj Kumar N. Isolation and quantification of DNA from epithelial cells obtained from acrylic removable partial denture for sex identification. *Egypt J Forensic Sci* 2019; 9(1).
24. Dutta P, Bhosale S, Singh R, Gubrelly P, Patil J, Sehdev B, et al. Amelogenin gene - the pioneer in gender determination from forensic dental samples. *J Clin Diagn Res* 2017; 11(2).
25. Shenghe C, Wei S, Zhaoxi Z, Jingyang L, Minjie D, Haiyan S. A weird DNA band in PCR and its cause. *J Plant Sci Mol Breed* 2016; 5(1).
26. Bhairavi V. Re: Why there are no bands of DNA on running gel electrophoresis even after a PCR? [Internet]. Available from: https://www.researchgate.net/post/Why_there_are_no_bands_of_DNA_on_running_gel_electrophoresis_even_after_a_PCR/5caf8b07a4714b45c02e5b62/citation/download 2019; 2019.

How to cite this article: Kurniawan A, Rizky BN, Chusida A, Prakoeswa BFWR, Athalia SA, Malau STJ, Alias A. The significance of amelogenin loci from toothpicks as forensic evidence for sex determination. *J Taibah Univ Med Sc* 2023;18(1):148–153.

The significance of amelogenin loci from toothpicks as forensic evidence for sex determination

ORIGINALITY REPORT

20%
SIMILARITY INDEX

16%
INTERNET SOURCES

9%
PUBLICATIONS

0%
STUDENT PAPERS

PRIMARY SOURCES

1 [faqs.tips](#) Internet Source **1%**

2 [answerygy.com](#) Internet Source **1%**

3 [www.spandidos-publications.com](#) Internet Source **1%**

4 [academicworks.cuny.edu](#) Internet Source **1%**

5 [journalmsr.com](#) Internet Source **1%**

6 [www.afp.gov.au](#) Internet Source **1%**

7 Hussain Abdullah Yamany. "Quiz", Journal of Taibah University Medical Sciences, 2013
Publication **1%**

8 [maryelizabethbodycare.com](#) Internet Source **1%**

[discovery.dundee.ac.uk](#)

9

Internet Source

1 %

10

Cut Ratna Keumala, Sisca Mardelita.
"COMMUNITY KNOWLEDGE ABOUT THE USE
OF TOOTH PICKS ON GINGIVA STATUS IN
LAMTEH VILLAGE BANDA ACEH", JDHT Journal
of Dental Hygiene and Therapy, 2022

Publication

1 %

11

www.science.gov

Internet Source

1 %

12

Sindy Cornelia Nelwan, Ricardo Adrian
Nugraha, Anang Endaryanto, Frisma Dewi et
al. " Effect of scaling and root planing on level
of immunoglobulin E and immunoglobulin G
in children with gingivitis and house-dust mite
allergy: A pilot randomised controlled trial ",
Singapore Dental Journal, 2020

Publication

1 %

13

www.mdpi.com

Internet Source

1 %

14

www.sfu.ca

Internet Source

1 %

15

Ayesha Ahmed, Dalal M. Al-Tamimi, Mohamed
A. Shwarby, Areej M. Al-Nemer et al.
"Prerequisites for histopathological evaluation
of reduction mammoplasty specimens:
Recommendations based on an audit in a

1 %

tertiary care hospital", Journal of Taibah
University Medical Sciences, 2016

Publication

16	acbjournal.org Internet Source	1 %
17	www.ejmed.org Internet Source	1 %
18	"Editorial Board", Journal of Taibah University Medical Sciences, 2012 Publication	<1 %
19	curis.ku.dk Internet Source	<1 %
20	pubs.rsc.org Internet Source	<1 %
21	Acosta, F.. "Mx expression in Atlantic salmon (Salmo salar L.) parr in response to Listonella anguillarum bacterin, lipopolysaccharide and chromosomal DNA", Fish and Shellfish Immunology, 200409 Publication	<1 %
22	Solip Lee, Heesang You, Songhee Lee, Yeongju Lee, Hee-Gyoo Kang, Ho-Joong Sung, Jiwon Choi, Sunghee Hyun. "Individual Identification with Short Tandem Repeat Analysis and Collection of Secondary Information Using Microbiome Analysis", Genes, 2021 Publication	<1 %

23	downloads.hindawi.com Internet Source	<1 %
24	mts.intechopen.com Internet Source	<1 %
25	resource-allocation.biomedcentral.com Internet Source	<1 %
26	www.hoajonline.com Internet Source	<1 %
27	B. KAY. "Dose-response relationship for disoprofol (ICI 35868; Diprivan).", <i>Anaesthesia</i> , 9/1981 Publication	<1 %
28	acikerisim.ibu.edu.tr Internet Source	<1 %
29	Dennis Heng, Scheila Manica, Ademir Franco. "Forensic Dentistry as an Analysis Tool for Sex Estimation: A Review of Current Techniques", <i>Research and Reports in Forensic Medical Science</i> , 2022 Publication	<1 %
30	cris.usil.edu.pe Internet Source	<1 %
31	tessera.spandidos-publications.com Internet Source	<1 %
32	www.thaiscience.info Internet Source	<1 %

<1 %

33

www.rfppl.co.in

Internet Source

<1 %

34

M. R. Bakst. "Duration of fertility of turkeys inseminated at different times after the onset of photostimulation", *Reproduction*, 11/01/1988

Publication

<1 %

35

Saad G. Al-Ghaneem, Osama S. Al-Nefisah. "The prevalence of smoking among male students of Majmaah University, KSA", *Journal of Taibah University Medical Sciences*, 2016

Publication

<1 %

36

e-journal.unair.ac.id

Internet Source

<1 %

37

www.frontiersin.org

Internet Source

<1 %

38

Jianguang Zhang, Junjun Wang, Yue Wang, Ming Chen, Xuemin Shi, Xiaoping Zhou, Zhifeng Zhang. "Phytochemistry and Antioxidant Activities of the Rhizome and Radix of *Millettia speciosa* Based on UHPLC-Q-Exactive Orbitrap-MS", *Molecules*, 2022

Publication

<1 %

Exclude quotes Off

Exclude matches Off

Exclude bibliography On

The significance of amelogenin loci from toothpicks as forensic evidence for sex determination

GRADEMARK REPORT

FINAL GRADE

/0

GENERAL COMMENTS

Instructor

PAGE 1

PAGE 2

PAGE 3

PAGE 4

PAGE 5

PAGE 6
