

Effectivity Test Of Crude Protein Spore of Myxobolus koi as Materials Development For Sub Unit Vaccine To Prevent the Gold Fish (Cyprinus carpio, Linn) Dead by Myxobolusis

by Kismiyati Kismiyati

Submission date: 11-Jul-2022 01:12AM (UTC+0800)

Submission ID: 1868687055

File name: 018_Kismiyati_IOP_Conf._Ser._Earth_Environ._Sci._116_012105.pdf (559.72K)

Word count: 6264

Character count: 31059

PAPER · OPEN ACCESS

1
Effectivity Test Of Crude Protein Spore of *Myxobolus koi* as Materials Development For Sub Unit Vaccine To Prevent the Gold Fish (*Cyprinus carpio*, Linn) Dead by Myxobolus

To cite this article: Kismiyati and G. Mahasri 2018 *IOP Conf. Ser.: Earth Environ. Sci.* **116** 012105

9
View the [article online](#) for updates and enhancements.

You may also like

- 11
- [Self-organization in bacterial swarming: lessons from myxobacteria](#)
Yilin Wu, Yi Jiang, A Dale Kaiser et al.
- 7
- [Development of Spore Protein of *Myxobolus koi* as an Immunostimulant for Prevent of Myxobolus on Gold Fish \(*Cyprinus carpio* Linn\) by Oral Immunisation](#)
Gunanti Mahasri
- 6
- [A generalized discrete model linking rippling pattern formation and individual cell reversal statistics in colonies of myxobacteria](#)
Uwe Börner, Andreas Deutsch and Markus Bär



*Benefit from connecting
with your community*

ECS Membership = Connection

ECS membership connects you to the electrochemical community:

- Facilitate your research and discovery through ECS meetings which convene scientists from around the world;
- Access professional support through your lifetime career;
- Open up mentorship opportunities across the stages of your career;
- Build relationships that nurture partnership, teamwork—and success!

Join ECS!

Visit electrochem.org/join



1
**Effectivity Test Of Crude Protein Spore of *Myxobolus koi* as Materials
Development For Sub Unit Vaccine To Prevent the Gold Fish
(*Cyprinus carpio*, Linn) Dead by Myxobolus**

Kisdiyati¹ and G. Mahasri²

¹ Department of Fish Health Management and Aquaculture Faculty of Fisheries and Marine, Universitas Airlangga, Kampus C Mulyorejo, 60115

² Department of Fish Health Management and Aquaculture Faculty of Fisheries and Marine, Universitas Airlangga, Kampus C Mulyorejo, 60115

email : kisdiyati@fpm.unair.ac.id
ORCID ID : 0000-0003-3627-2895

Abstract. Production of fisheries culture according to totality estimated is increasing about 4.9% per year. Gold fish is one of species that have economically value in Indonesia, but there are problem because of myxobolus. The aims of this research are : Isolation of crude spore protein of *Myxobolus koi* by using SDS-PAGE and to analyze profile of *Myxobolus koi* protein that will be developed for sub unit vaccine that can protect koi fish infected by *Myxobolus sp.* The method of this research used experimental method and belonged to stage : Culture of *Myxobolus* by using spore scattered, characterization of *Myxobolus* proteine spore by using SDS-PAGE, Antibody polyclonal production by using ELISA methode to find out optical density of this antibody, and vaccination was done by dipping, with dose 600 μ l per liter. The result showed that there were 5 bands of crude protein spore of *Myxobolus koi* with molecule weight (MW) 41.1 kDa, 51 kDa, 89.8 kDa, 121.7 kDa and 230,1 kDa. The highest Optical Density (0.699) from polyclonal antibody production by using crude spore protein of *Myxobolus koi* happened on the 42nd day. The result of the challenge test of the protein showed that the highest of leucocyte count happened on the fish immunized by crude spore protein and not infected by *Myxobolus koi*, but can increase the survival rate (SR) from 20% to 86,37%, so the crude spore protein of *Myxobolus* can be used for development of material for sub unit vaccine to prevent the myxobolus.

Keywords : Crude protein spora, Leukocyte, *Myxobolus*, Myxobolus, Optical Density.

1. Introduction

One of the species of freshwater fish that have a bright prospect is the goldfish (*Cyprinus carpio* Linn). Based on document from the Ministry of Fisheries and marine in 2010, it is stated that Indonesia recently mastered 7.5% freshwater fish trading, still lower if compared to Singapore which has reached 22.5%. This led to the development of the carp increased mainly through farming good intensively or traditional. However, many obstacles can cause a failure in the culture, in which the main constraint of very noteworthy is the emergence of an attack of the disease.



2
Content from this work may be used under the terms of the [Creative Commons Attribution 3.0 licence](https://creativecommons.org/licenses/by/3.0/). Any further distribution of this work must maintain attribution to the author(s) and the title of the work, journal citation and DOI.

One of the diseases that often become parasiter is a Protozoan disease caused by *Myxobollus koi* called myxobolusis. Myxobolusis is a disease parasiter on fish caused by the sporozoa among other *Myxobolus* sp. Generally disease-causing organisms is known as its spore morphology, number, and location of the polar filament. The disease can cause serious problems on the goldfish of koi and can lead to the death of up to 60-90% with prevalence reaching 100%. Furthermore it is said that in 1974 and 1978 there was a case of *Myxobolus* attack in Indonesia that led to the deaths of up to 100% of the koi fish mainly on stadia seeds.

Fish Stricken by the disease of myxobolusis show difficulty to breathe because there was a nodule or cyst or nodule on the Gill filaments. In Blitar it was reported by farmers that in 2010 there was myxobolusis disease occurring on carp koi that was 3-5 cm with mortality reaching the 90%. The spread of this parasite occurs due to the transfer of parasites from one fish to another, either directly or through the host between certain phases of the life cycle of the parasite [8]. In 2002 mass death of goldfish occurred in Kulon Progo and Sleman, caused by a parasite *Myxobolus* sp. and *Henneguya* so that the loss experienced by the fish farmers was quite large. *Myxobolus* sp. is also found in the Ngrajek area of Magelang Regency in 2006 with prevalence reaching 91%, and then in goldfish ponds koi in Blitar with prevalence reaching 86% in 2010.

Prevention efforts and countermeasures against myxobolusis have been done using a disinfectant as well as other chemicals, but not yet able to meet the target and can even cause resistance and residues in the body of the fish. It is necessary to look for alternative prevention efforts that do not cause a negative impact. One of the efforts that have already begun to be developed at this time is by vaccination that can be done by means of immersion or injection [3]. [2] managed to find a antigenic carbohydrate isolated from glycoprotein.

Characterization of protein can be done by using the method of *Sodium Dodecyl Sulfate-Poly Acrylamide Gel Electrophoresis* (SDS-PAGE) where the results can be known whether protein molecular weight is suitable for use as a vaccine. A protein core and anti-*Zoothamnium arbuscula* with cytoplasmic protein spasmin-1 on spasmonema. Immunoblotting analysis of results showed that the protein has a molecular weight of antigen of 68 kDa, 55 kDa and 71 kDa. This protein is thought to play a role in parasitic infestations on the host where the major protein is as an important ligand bonding in *Ichthyophthirius multifiliis* and is the parasite's entry bridge into the cell.

Protein can be a good antigen when it has a molecular weight greater than 1,000 Dalton and the complexity of the structure. The antigen that is also referred to as imunogen is a material that can stimulate the immune response or material that may react with antibodies that are already there without regard to its ability to stimulate the production of antibodies.

The protein of spasmin on *Zoothamnium arbuscula* spasmonema can already be created Polyclonal antibody in hela cells. Immunoblotting analysis of the results shows that the location of the protein of antigens at molecule weight is 68/69 kDa, 55 kDa and 70 kDa. Proteins of the membrane *Tetrahymena* sp. which is the one with the *Ichthyophthirius familia multifiliis* had most likely developed as a sub unit vaccine against the disease white spot on the fish. The antigenic membrane protein in *Paramecium* by SDS-PAGE and Western Blotting, with 61 kDa molecular weight, 63 kDa and 65 kDa.

Based on the background above, searching sub-unit of myxobolus material needs to be done to be developed as a sub unit vaccine that an provide protection against attacks on the carp myxobolusis, until the death of fish in the pond can be suppressed.

2. Research Methodology

This research was carried out from March to October by 2015, with the location of the research in the laboratory of Dry (*Kering*), Fisheries and Marine Faculty, Airlangga University and the laboratory of molecular biology, the Faculty of Sciences Brawijaya University of Brawijaya, Malang.

2.1 Materials and Equipments

The main material for the isolation and characterization of a protein used are physiological NaCl, ethanol, solvents percoll gradient, pepsin, HCl, Ethylenediaminetetraacetic (EDTA), K1, Na₂HPO₄, KH₂PO₄, trypsin, sodium citrat, NaHPO₄, H₂, NaHCO₃, glucosa, phenols red 0.5%, NaOH, filter 0.22 um, bovine serum albumin, dextrosa, Ethyl Alcohol (ETOH), proteinase, ForwardERIB1 primer pairs 5'-ACCTGGTTGATCCTGCCAG-3' (2-20) and Reverse ERIB10 5'-CCTCCGCAGGTTACCTACGG-3' (2069-2070), 400 UM DNTP, 3 um Mgso₄, yellow and blue dye, agarose, Tribase Acetic and EDTA (TAE) buffer, sybrsafe, 100 DNAladder bp and bp 1, loading dey, tris-HCL, 2-mercaptoethanol, sodium dodecyl sulfate (SDS), bromophenol blue, glycerol, SDS loading buffer, polyacrylamide, stacking gels, ammonium peroxidaisulphate (APS), glycine and Tetramethylenediamine (TEMED).

Materials for the production of Polyclonal Antibodies are rabbit from the Center Pusvetma/Veterinaria Farma, Surabaya, with an average weight of 2.385 kg 5 – 6 months and the male gender, Freund's complete adjuvants (Sigma), and Incomplete Adjuvants Freund's (Sigma).

The main equipment used are Haemocytometer, rubber pollicemen, microscope tube micrometer, autoclaf, centrifuse, swinging rotors, water bath sonicator and 1 set of tools of SDS-PAGE electrophoresis.

2.2 Research Methode

Research methods used in this research is descriptive method, where the blood picture and examination stages of counting of survival rate of carps are performed using 4 pieces of aquariums with a volume of 10 litres, for not exposed by a spore protein spores (given PBS) and not infected (K1), 1 for treatment of exposure to infection with spores and protein *Myxobolus koi* (K2), 1 piece of the Aquarium for treatment not exposed with protein and infected *Myxobolus koi* (K3) and 1 piece of akurium for the treatment of infection not exposed with protein and *Myxobolus koi* (K4). Dose used in this research is 600 micro litres per fish through injection (IM). Each of the aquariums is filled with 10 goldfish.

2.3 Sample preparation of *Myxobolus* sp. Spore.

The main ingredients of this research are nodules containing spores of *Myxobolus* sp. stadia adults are obtained from goldfish stricken by myxobolus. The infected fish or there are nodules on gills first are cleaned using aquadest so that dirt stuck in the body of the fish is lost. Retrieval of nodules containing spores of *Myxobolus* is done manually by first taking the gills of carp and then using tweezers nodules on the gills slowly so that the nodules are not destroyed and turned so that the spores can be drawn wholly from the stricken organs (gills). Nodules containing spores of *Myxobolus* sp. are collected and washed with aquadest in order to be free from dirt and slime, and then broken down and crushed and then centrifuged with speed 1,500 rpm. Spores will precipitate out. Deposits of spores are washed again with centrifugedion again with speed 1,500 rpm for 5 minutes. The deposits are taken and spores are counted in numbers and saved and given PBS.

2.4 Isolation of Spore Protein Crude of *Myxobolus* sp.

Spores that have been counted then are washed with PBS and centrifuged at speed 5000 rpm for 10 minutes. Leaching process is repeated twice. Pellet is resuspended with buffer Lysis (0.32 M sucrose (sucrosa) 54.8 gram, 1% v/v Triton X-100 0.5 ml, 10 mM Tris HCL pH 7.4 10 ml) so as to obtain a concentration \pm 11ml. then on pellet suspension added 0.5 ml of EDTA 1 μ M and PMSF (phenylmethylsulfonyl fluoride) 5 mM as much as 0.5 ml. then sonication is done with ice in a sonicator waterbath (1 minute sonication, ½ minute break) repetitive 10 times. The results of the sonication is vortexed (½ minute vortex 1 minute rest) in ice, carried out repeatedly 15 times. Solution of sonication results is crude protein.

Analysis of protein concentration on research uses the method of Biuret and read with a UV-Visible spectrophotometer. Reaction with biuret method is the formation of the complex which is purple. This complex is formed when one or more peptides reacts with NaOH and CuSO₄. Colour arising is due to Cu²⁺ ions complex with four nitrogen atoms that come from four of the ring peptide. Protein levels are calculated by converting on Bovine Serum Albumin curve (BSA) whose concentration is known.

2.5 The production of Polyclonal Antibody against Crude of Spores Protein Of Immunization of Spore Protein in rabbits

Adult healthy male Rabbit is injected intramuscularly with whole protein with a dose of 50-100 μ g which was previously added adjuvants complete (Sigma) with the same comparison so that the final volume by as much as 500 μ l. Injection is done under the skin at the four locations of the body that have loose skin. Injection was repeated with the same protein by the addition of adjuvants incomplete (Sigma) at 2 weeks after the first injection. Reinjection the next reset used the same protein with adjuvant the same way incomplete onwards until a high antibody titer was obtained. Prior to injecting, the first capture serum negative control in test as ELISA. Taking the serum before further carried out booster is to see any antibody response after injection with the same test.

2.6 Determination of Antibody Titer by ELISA Method

Titer of antibodies derived from rabbit serum that has been on immunization is determined by the method of ELISA. Negative control is taken from rabbits that are not in immunization by gender and age. The Cup of microtiter used is mikrotiter cup sumuran 96. Every sumuran is in the content with 100 μ l of the antigen solution with the concentration 10 μ g/ml in buffer coating and in incubation at a temperature of 20^o C for 24 hours. The cup of mikrotiter is washed one time with wash buffer and then in each sumuran is added 100 μ l of serum of rabbits immunized and diluted with PBS. Rabbit serum is diluted in series, namely 2⁰, 2⁻¹, 2⁻², 2⁻³, ..., 2⁻¹⁰. The cup of mikrotiter is incubated at temperature 37^o C for one hour and continued to be washed three times with wash buffer. Every sumuran is in the content with 100 μ l of the conjugated solution of IgG goat antimouse peroxidase. Conjugate is diluted with PBS 10,000 X and BSA is added 1%. The cup of mikrotiter is incubated in temperature 37^o C for one hour and then is washed three times with wash buffer. Each sumuran is added as many as 150 μ l ABTS substrate μ l (one mg/ml in buffer substrate ABTS and 0.3 μ l of hydrogen preokside). The cup of mikrotiter is incubated in room temperature for 30-45 minutes. antibody titer is read with a spectrophotometer for ELISA (ELISA reader) at a wavelength of 405 nm. Antibody Titer indicates negative if the results of the reading of ELISA between control rabbit and the immunized rabbit gets almost the same optical density (OD) values immunization. Antibody Titer indicates positive when value OD immune rabbit higher or at least twice the value of the OD of control rabbit control.

2.7 Examination of Erythrocyte Number

Hemosit is taken on the ventral part of the second abdominal segments using needle 25 G one syringe one ml entered 0.2 ml of solution modified with cold Alsever (AS 19.3 mM; Na citrate 239.8 mM NaCl 182.5 and glucose 6.2 mM EDTA; pH 7.2) as an anticoagulant. Counting the number of haemocyte is done with methods of May Grunwald-Giemza, namely using light microscopy (LM) with an enlarged 1000 times, then calculated with the Coulter counter ZM SUNDAY model (Counter Electronic Ltd), hemosit particle size range 0.4-800 μ m, as supporting data can also be observed with the electron microscope (EM) by first centrifuged 700 X gravity at a temperature of 4⁰ C for five minutes.

2.8 Examination Of The Differential White Blood Cells

The blood is shed on glass objects and made blood review with giemsa staining, later the type of cell is identified . Differential hemosit aims to find out the amount, type and percentage of cell hemosit. The number of hemosit is calculated up to 100 cells and look for the percentage of each type is found, done from the beginning to the end of the study.

2.9 Determination of Survival Rate (SR)

Determination of level of survival rate was conducted to analyze the ability of crude spore protein protection on goldfish. It is expressed in the form of a percentage of the number of koi fish that lives up to the experimental treatment against 30pasca the total number of fish kept. Fish survival is calculated by using the formula :

$$SR = \frac{Nt}{No} \times 100\%$$

Description:

SR = survival rate

NT = the number of fish that live at the end of the observation

No = number of fish that live in the beginning of the test

2.10 The parameters of the research and Data analysis

The main parameter of this research is the protein profile of *Myxobolus koi*, carp blood Picture (the number of Leukocytes and Erythrocyte) and Survival Rate of the koi fish exposed with protein of *Myxobolus koi*. Data from the study results will be presented in the form of quantitative data and analyzed with Analyzed of Variance (ANOVA) [12].

3. Results And Discussion

The results of the examination and identification of spores of *Myxobolus koi* of koi fish can be seen in Figure 1 and 2. While the results of the determination of the characterization protein conducted using SDS-PAGE method can be seen in Figure 3.



Figure 1. Nodules on the gills of fish infected by *Myxobolus koi* (A) and Nodules that contains the spores of *Myxobolus koi*

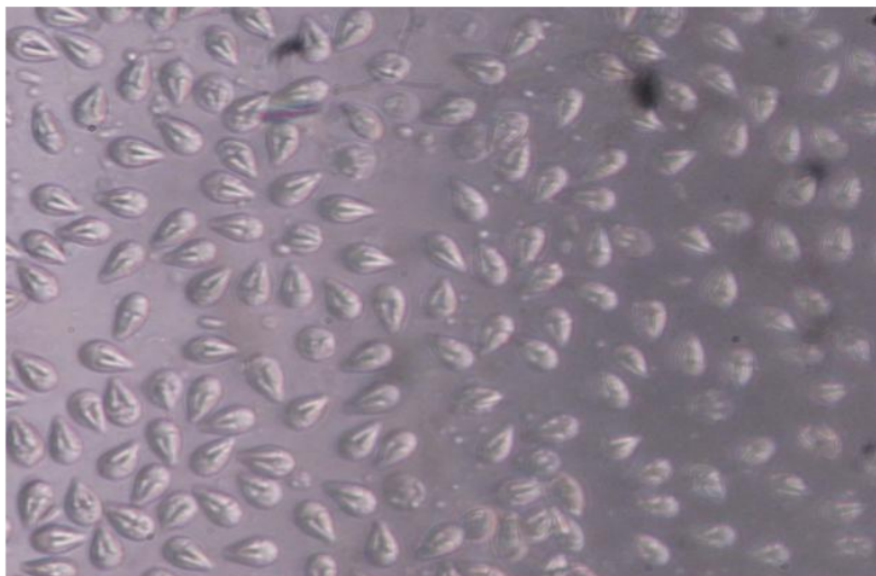


Figure 2. spore of *Myxobolus koi* (400x Zoom)

3.1 Isolation of Crude Protein

Samples of nodules containing spores of *Myxobolus* sp was obtained from Blitar, Tlogo village, Kanigoro district as many as 154. Isolation of proteins was carried out by taking 1 gram of tissue samples of nodules that were then made into crude protein and stored in a refrigerator with a temperature of 4 ° C in a solution of Tris-HCl 20 mM.

Crude protein concentration analysis is performed using the method of solution concentration using Biuret BSA 0 – 10000 ppm. Determination of the wavelength of the BSA was done in concentration of BSA at 4000 ppm so the obtained maximum wavelength was 541 nm.

3.2 Analysis of Crude Protein of Spores By The Method Of SDS-PAGE

Protein analysis is carried out using the method of SDS-PAGE which is a method to solve the protein based on molecular weight. SDS-PAGE uses the stacking gel used 3% and 12% separating gel and was run on 200 Volt voltages and 2 mA. The results of the SDS-PAGE in the form of band of proteins, where the band can be calculated from the weight of the molecule so that the character of the protein from the spores of *Myxobolus* sp. can be known. (Figure 3)

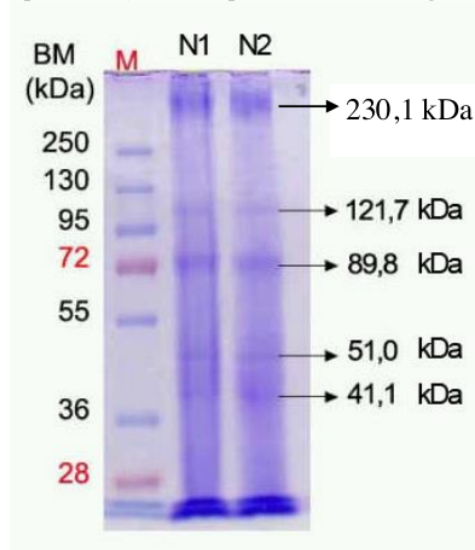


Figure 3. Showed that results of spore protein characterization of of *Myxobolus* sp. Using SDS-PAGE is invalidated 5 bands of protein with molecular weight (BM) 230.1 kDa, 121.7 kDa, 89.8 kDa, 51.0 kDa, 41.1 kDa.

3.3 Production of Polyclonal Antibodies

The result of the production of Polyclonal Antibodies from spore protein *Myxobolus koi* obtained Value OD that on day 1 is 0.233 and has increased up to day to 42. Every time the blood taking is done. booster OD Values on day 56 though done booster was done, it declined to be a 0547.

Table 1. The value of the Optical Density (OD) of Spore Proteins Polyclonal Antibody in rabbits by Indirect ELISA

Day to	Value of OD		
	The Rabbit serum infected by <i>Myxobolus</i>	Control Serum (-)	PBS control (-)
1	0.233	0.154	0.103
14	0.489	0.157	0.101
28	0.531	0.158	0.102
42	0.699	0.151	0.103
56	0.547	0.132	0.102

Value OD on day 42 reached 0.699 that shows more than 2 times the value of OD control. This is in accordance with the opinion of the Tizzard (1988) who says that animals given repeated vaccine will stimulate the formation of antibodies.

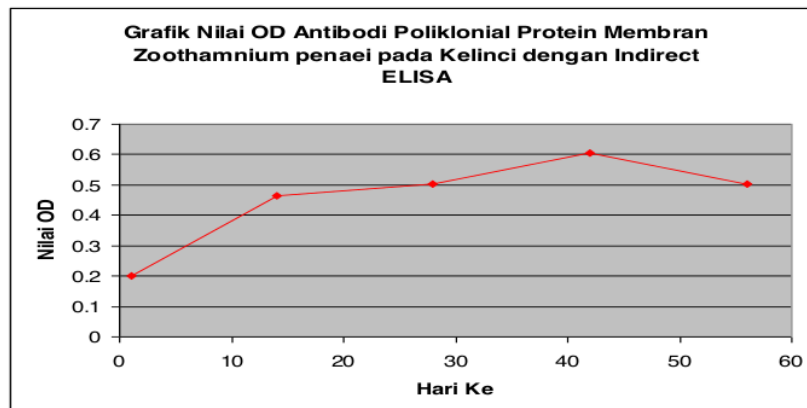


Figure 4. Graph of OD Value of Spore Protein Polyclonal Antibody of *Myxobolus koi* in rabbits by Indirect ELISA

ELISA test results showed that the crude spore proteins of *Myxobolus koi* can induce the formation of antibodies on goldfish. Table 1 shows the highest optical density values occur on day 42. The increase in the value of the OD on the fish exposed later infected with crude spore protein *M. koi* shows the ability of the protein protection against myxobolus infection. The mechanisms of the immune response in fish, when antigen (vaccine) enters into the body of the fish then the antigens is presented by MHC, antigen will be captured by receptors on T helper cells (2), and helper T cells (2) going to secrete cytokines, namely IL-2, IL-4, IL-6 aimed at the differentiation and proliferation of B cells, differentiation of B cells and plasma cells will produce memory cells. Next the cell plasma will synthesize specific antibody and bind antigens so as to prevent the movement of antigen and to ease the process of phagocytosis.

3.4 Examination results of Blood picture of Goldfish Exposed with Spore Protein

The results of the determination of the blood picture of Goldfish exposed with the spore proteins after 14 days of observance, with a dose of 600 μ l is presented in table 2. Table 2 shows that the number of Erythroisit occurs on a control (K1) and lowest on K3 (infected by *Myxobolus koi*, not exposed by spore protein) namely 30.4% and the highest occurred in control (K1) by 91.13%, while on treatment of K3 (exposed by protein and infected by *Myxobolus koi*) amounted to 30.4%. For the number of leukocytes occurs on K3 that is 69.36% and lowest in 8.87% of K1, whereas in the treatments of K3 66,58%.

Table 2. The results of the determination of the Blood picture of a Goldfish exposed by spores protein after 14 days of maintenance.

Treatments	Image of Carp Blood after 14 days of maintenance (%)	
	Erythrosit	Leukosit
Control, no infection and no exposed Protein (K1)	91.13 ^a	8.87 ^c
Infected by <i>Myxobolus</i> and not exposed by Spores Protein a dose of 600 μ l/fish (K2)	32.42 ^b	66.58 ^f
Infected by <i>Myxobolus</i> and not exposed by Spores Protein with a dose of 600 μ l/fish (K3)	30.64 ^c	69.36 ^g
Not Infected by <i>Myxobolus</i> and not exposed by Spores Protein with a dose of 600 μ l/fish (K3)	69.33 ^d	30.67 ^h
Normal	96.5 – 98,0	14 - 36

Description: different Superscript on the same column indicates the existence of the real difference ($p < 0.05$)

3.5 Results of determination of Differential Goldfish Leukocytes Exposed by Crude Spore Proteins

The results of the differential determination of white blood cells in the goldfish exposed with crude spore protein after 14 days of observance, with a dose of 600 μ l are presented in table 3. Table 3 shows that the results of the counting of the lymphocytes in the blood of carp at the highest is treatment K3 (fish without being vaccinated but infected with 80 spores/fish *M. koi*), namely in the amount of 86.37% and the lowest percentage is in the treatment of K namely 70.46%. The results of the counting of monocytes in the blood of carp at each treatment obtained the highest percentage in the treatment of K3 namely 23.33% and the lowest is K4 treatments at 9.24%. Percentage of observations of heterofil in blood of koi fish showed the highest percentage in the treatment of K4 namel 13.4% and lowest is in treatment of K2 (fish were vaccinated and infected by 80 spores/fish *M. koi*) of 6.7%. Observation of the number of eosinophils demonstrated the highest percentage on K3 treatment of 6.71% and lowest in the treatment of the K1 (control) of 6.8%. Observation of the number of basophils indicates the highest percentage in the treatment of 5.93% K3 and K1 is at the lowest treatment 2.23%.

Table 3. Results of determination of Differential Leukocytes Carp exposed by Crude spore Protein after 14 days of maintenance.

Treatment	Differential of Leukocytes Carp exposed by Crude spore Protein after 14 days of maintenance (%)				
	Limfosit	Basofil	Heterofl	Eosinofil	Monosit
Control, not infected and not exposed by protein (K1)	73.12	2.23	13.4	3.65	10.25
Infected by <i>Myxobolus</i> and exposed by spore Protein Spora dose 600 μ l/fish (K2)	82.23	3.95	6.7	5.19	1.53
Infected by <i>Myxobolus</i> and not exposed by spore protein dose 600 μ l/fish (K3)	86.37	5.93	12.6	6.71	23.33
Not infected by <i>Myxobolus</i> and exposed by spore Protein Spora dose 600 μ l/fish (K4)	70.46	2.53	8	3.27	9.24
NORMAL	54	2	14	7	23

3.6 Results of determination of survival rate of Carps exposed by spore Protein

Survival rate of carp is expressed in percentage and calculated on day 14 presented in table 4. Table 4 shows that in spore protein protection test of *M. koi*, there is a noticeable difference ($p < 0.05$) between the treatment of survival rate between exposed and not exposed with spores of *Myxobolus koi* keeping after 14 days.

The results of calculation show that the highest at the treatment of survival rate is in K4 (fish are not infected and fish are exposed with spores of *M. koi*) namely 96.00% and treatment (control) of K1 94.00%, while the lowest treatment is K3 (fish are infected with 80 spores/fish of *M. koi* and not exposed) with the value of SR for 20%.

Table 4. The Results Of The Determination Of survival rate of Koi exposed by The Spores Protein after 14 days of maintenance

Treatment Group	Survival rate of koi fish after vaccination
Control, not infected and not exposed by protein (K1)	94.00 ^a ± 2.13
Infected by <i>Myxobolus</i> and exposed by spore Protein Spora dose 600 µl/fish (K2)	83.00 ^b ± 6.43
Infected by <i>Myxobolus</i> and not exposed by spore protein dose 600 µl/fish (K3)	20.00 ^c ± 3.54
Not infected by <i>Myxobolus</i> and exposed by spore Protein Spora dose 600 µl/fish (K4)	96.00 ^a ± 2.46

Description: different Superscript on the same column indicates the existence of the real difference ($p < 0.05$)

3.7 Water quality of maintenance medium

Water quality is the most important factor in fish farming. Water quality is affected by a variety of chemical substances that are dissolved in the water, that are temperature, pH, dissolved oxygen and ammonia.

4. Discussion

The results of the identification of spores shows that *Myxobolus* sp. obtained on goldfish gills in this research is *Myxobolus* sp. nodule samples obtained subsequently are made into protein samples by way of physical breakdown by crushing and disonicating to break down the cell. Sonication can be used to speed up the separation of particles in the sample by breaking Intermolecular interaction and then centrifuged with high speed and enough time to separate between the spores, nodules chains, and spore protein, and nodule protein. Sentrifus is a tool that is used to rotate the sample at high speeds and forced heavy particles accumulated into the base tube of sentrifus.

Crude protein concentration of nodules containing spores of *Myxobolus* sp. which is measurable by using UV-Visible Spectrophotometry is 5116.25 µg/ml. States that the lowest concentration of protein is needed for protein analysis of 1.2 µg/ml, so it can be inferred that the crude proteins of *Myxobolus* sp. protein analysis can be conducted using SDS-PAGE electrophoresis.

Stacking gel SDS-PAGE technique used was 3% and separating gel 12 % and being run on with 200 Volt voltages and 2 mA. This study used separating gel 12% protein because the spores of *Myxobolus* sp. ranged between 7 – 130 kDa. The protein which has a molecular weight of 20 – 200 kDa packed used separating gel 12%.

The results of the SDS-PAGE in this study showed 5 bands of protein with molecular weight (BM) 41.1 kDa, 51 kDa, 89.8 kDa, 121.7 kDa and 230.1 kDa. Protein band results obtained is not yet

known which the spore proteins and band proteins are and which the protein from tissue nodules is. The protein from spore of *Myxobolus cerebralis* has BM 7 kDa, 45 kDa, 60 kDa and 130 kDa. Therefore, on this research protein bands with BM 41.1 kDa, 51 kDa, 89.8 kDa and 121.7 kDa and 230.1 kDa are crude proteins of *Myxobolus* sp. which most likely is a highly immunogenic protein

Changes in the total number of leukocytes and erythrocytes can be used as an indicator of the existence of the attack of infectious diseases in fish. Leukocytes in blood components is one that serves as a specific body defense that will neutralize and destroy pathogens through phagocytosis. Lymphocytes is one form of leukocytes. Figure 3 shows the percentage of lymphocytes in each treatment. The observations of lymphocytes showed the highest percentage of 86.37% in the treatment of K3 (not being exposed and infected with 80 spores/fish of *M. koi*) when compared with the treatment of K1 (control) of 73.12%. The increased number of lymphocytes in the fish infected with spores of *M. koi* is the body's defense system response of fish over the entry of pathogens. The antibody-producing lymphocytes function as immune to interference from disease.

Lymphocyte cell consists of two populations i.e. B cells and T cells. B cells have the ability to transform into plasma cells i.e. cells that produce antibodies. T cell immunity is as instrumental in cells interaction (cytotoxic T cells) and control the immune response (suppressor T cells). After the binding of an antigen with antigen receptor cell lymphocytes, lymphocyte cells will then divide and differentiate into effector cells and memory cells.

Monocyte percentage of each of the treatments is shown in Table 3. There was a decline in the number of monocytes in treatment K4 i.e. 9.24% compared with K1 (control) i.e. 10.25%. The decline was caused by the monocytes which phagocytosed spores of *M. koi* that went in the body of the fish. This is in accordance with the opinion that the monocytes with macrophage will phagocytose agents causing diseases that enter the body. The monocytes function as phagocytes against foreign objects which act as the agent of the disease.

The amount of heterophil in treatment K2, K3 and K4 has decreased when compared with the treatment of the K1 (control) as shown in Table 1. This is due to the increase in lymphocytes and monocytes, so heterophil is declining. Cell heterophil does not play a role mainly in responding to an infection caused by a parasite and is more instrumental in infections caused by bacteria.

The results of the calculation against the number of eosinophils demonstrated the highest percentage on K3 treatment of 6.71% compared with treatment K (control) of 3.65%. Spore infection of *M. koi* increases the number of eosinophils in the blood of fish. The eosinophils is one of the body's defense cells that are dominant in the blood and will increase sharply in number in case of infection disease parasite.

The results of the calculation showed that the lowest percentage basophils is 2.23% in K1 (control), then treatment K4 also shows low value namely 2.53%. The percentage of basophils in the blood of fish ranged from 0.17-0.194% and measuring 8-12 μm . The existence of basophils in blood circulation has been observed only in a small number of species of fish. Even more rarely basophils are found on examination of blood compared to eosinophils. The basophil granules contain eosinophil chemotaxis factor and type 1 hypersensitivity mediator when there is stimulation from allergens that cause the occurrence of snapping allergens on basophils, the content of basophils will release.

The results showed that spore proteins of *Myxobolus koi* were able to protect (protective nature) koi fish against myxobolus. This is evident by the presence of increased survival of carp from 20.00% up to 83.00% to harvest takes place, so that it can be interpreted as a decline of the death of goldfish.

The results of measurements of water quality: temperature, pH and dissolved oxygen on maintenance as indicated in Table 3 show the average temperature of the medium maintenance of each treatment was about 27-28 ° C, pH of water 8 and dissolved oxygen of 5 ppm. It indicates that the condition of water quality of maintenance medium is still in normal conditions for the survival of the fish. The goldfish can live on temperature range 8-30 ° c. The levels of ammonia (NH₃) before and after the treatment showed a difference in which ammonia before treatment of was 0 ppm while the after treatment was 0.5 ppm. The content of ammonia in the maintenance media tends to high caused by the presence of remnants of feed and fish metabolism excretion results.

5. Conclusion

5 profiles of Crude spore protein of *Myxobolus koi* are retrieved with molecular weight of 41.1 kDa, 51 kDa, 89.8 kDa, 121.7 kDa and 230.1 kDa. Crude spore Protein of *Myxobolus koi* can be developed as sub unit vaccine ingredients to prevent the death of goldfish, because it can improve the immune response of carp. Crude spore Protein *Myxobolus koi* can give protection to carps, so it can improve the survival rate of 20% up to 85%.

References

- [1] Eszterbauer, E., 2004. *Genetic Relationship Among Gill-Infecting Myxobolus Species (Myxosporae) of Cyprinids: Molecular Evidence of Importance of Tissue-Specificity*. Dis.Aquatis Org. 58:35-40.
- [2] Feizi, T and R.A. Childs. 1987, *Carbohydrates as Antigenic Determinants of Glycoprotein*, Biochem J, 245(1):1-11.
- [3] Fiala, I. 2006. *The Phylogeny of Myxosporae (Myxozoa) Based on Small Subunit Ribosomal RNA Gene Analysis*. Int. J. Parasitol 36: 1521-1534.
- [4] Hanson, L.A, D. Lin, L.M. Pote and R. Shivaji, 2001. *Small Subunit rRNA Gene Comparisons of Four Actinosporae Species to Establish a Polymerase Chain Reaction Test for The Causative Agent of Proliferative Gill Disease in Channel Catfish*. J. of Aq. An. Health, 13:117-123.
- [5] Lowers, J.M. and J.L. Bartholomew, 2006, *Detection of Myxozoan Parasites in Oligochaetes Imported as Food for Ornamental Fish*, Journal of Parasitology, 70:84-91.
- [6] Mahasri, G. 2007. *Protein Membrane Immunogenik Zoothamnium penaei Sebagai Bahan Pengembangan Immunostimulan Pada Udang Windu (Penaeus monodon Fab.) Untuk Mencegah Zoothamniosis*. Disertasi, Program Pascasarjana, Universitas Airlangga, Surabaya.
- [7] Mahasri, G. 2012. *Respon Imun Dan Kelulushidupan Udang Vannamei Lithopenaeus vannamei Yang Dimunisasi Dengan Protein/Membran Immunogenik Zoothamnium penaei*. Article of Konggres and International Seminar IFS, Can Tho University, Vietnam.
- [8] Ryce, E.K.N., 2003. *Factors Affecting The Resistance of Juvenile Rainbow Trout To Whirling Disease*. Ph.D. Thesis, Montana State University, Bozeman, MT.
- [9] Schlegel, M., J. Lom, A. Stechmann, D. Bernhard, D. Leipe, A.I. Dykova and M.L. Sogin, 1996, *Phylogenetic*

Effectivity Test Of Crude Protein Spore of Myxobolus koi as Materials Development For Sub Unit Vaccine To Prevent the Gold Fish (Cyprinus carpio, Linn) Dead by Myxobolusis

ORIGINALITY REPORT

7%

SIMILARITY INDEX

6%

INTERNET SOURCES

2%

PUBLICATIONS

3%

STUDENT PAPERS

PRIMARY SOURCES

1	www.ppjpi.unair.ac.id Internet Source	1%
2	Submitted to University of Greenwich Student Paper	1%
3	doaj.org Internet Source	1%
4	media.neliti.com Internet Source	1%
5	worldresearchersassociations.com Internet Source	<1%
6	Uwe Börner, Andreas Deutsch, Markus Bär. "A generalized discrete model linking rippling pattern formation and individual cell reversal statistics in colonies of myxobacteria", Physical Biology, 2006 Publication	<1%
7	sinta3.ristekdikti.go.id Internet Source	<1%

8	Joseph Selvin, A.J. Huxley, A.P. Lipton. "Immunomodulatory potential of marine secondary metabolites against bacterial diseases of shrimp", Aquaculture, 2004 Publication	<1 %
9	ir.siat.ac.cn Internet Source	<1 %
10	jurnal.unsyiah.ac.id Internet Source	<1 %
11	opus.bibliothek.uni-augsburg.de Internet Source	<1 %
12	Submitted to iGroup Student Paper	<1 %
13	Submitted to Universitas Brawijaya Student Paper	<1 %
14	Submitted to Aberystwyth University Student Paper	<1 %
15	www.ncbi.nlm.nih.gov Internet Source	<1 %
16	C. B. T. van de Braak, R. Faber, J. H. Boon. "Cellular and humoral characteristics of Penaeus monodon (Fabricius, 1798) haemolymph", Comparative Haematology International, 1996 Publication	<1 %

17

e-journal.unair.ac.id

Internet Source

<1 %

18

epdf.pub

Internet Source

<1 %

19

www.tandfonline.com

Internet Source

<1 %

20

link.springer.com

Internet Source

<1 %

Exclude quotes On

Exclude matches Off

Exclude bibliography On

Effectivity Test Of Crude Protein Spore of Myxobolus koi as Materials Development For Sub Unit Vaccine To Prevent the Gold Fish (Cyprinus carpio, Linn) Dead by Myxobolus

GRADEMARK REPORT

FINAL GRADE

/0

GENERAL COMMENTS

Instructor

PAGE 1

PAGE 2

PAGE 3

PAGE 4

PAGE 5

PAGE 6

PAGE 7

PAGE 8

PAGE 9

PAGE 10

PAGE 11

PAGE 12

PAGE 13

RUBRIC: 6TH-8TH SCIENCE ARGUMENT (CER)

CLAIM

Take an arguable position on the scientific topic and develop the essay around that stance.

ADVANCED	The essay introduces a precise, qualitative and/or quantitative claim based on the scientific topic or text(s), regarding the relationship between dependent and independent variables. The essay develops the claim and counterclaim fairly, distinguishing the claim from alternate or opposing claims.
PROFICIENT	The essay introduces a clear, qualitative and/or quantitative claim based on the scientific topic or text(s), regarding the relationship between dependent and independent variables. The essay effectively acknowledges and distinguishes the claim from alternate or opposing claims.
DEVELOPING	The essay attempts to introduce a qualitative and/or quantitative claim, based on the scientific topic or text(s), but it may be somewhat unclear or not maintained throughout the essay. The essay may not clearly acknowledge or distinguish the claim from alternate or opposing claims.
EMERGING	The essay does not clearly make a claim based on the scientific topic or text(s), or the claim is overly simplistic or vague. The essay does not acknowledge or distinguish counterclaims.

EVIDENCE

Include relevant facts, definitions, and examples to back up the claim.

ADVANCED	The essay supplies sufficient relevant, accurate qualitative and/or quantitative data and evidence related to the scientific topic or text(s) to support its claim and counterclaim.
PROFICIENT	The essay supplies relevant, accurate qualitative and/or quantitative data and evidence related to the scientific topic or text(s) to support its claim and counterclaim.
DEVELOPING	The essay supplies some qualitative and/or quantitative data and evidence, but it may not be closely related to the scientific topic or text(s), or the support that is offered relies mostly on summary of the source(s), thereby not effectively supporting the essay's claim and counterclaim.
EMERGING	The essay supplies very little or no data and evidence to support its claim and counterclaim, or the evidence that is provided is not clear or relevant.

REASONING

Explain how or why each piece of evidence supports the claim.

ADVANCED	The essay effectively applies scientific ideas and principles in order to explain how or why the cited evidence supports the claim. The essay demonstrates consistently logical reasoning and understanding of the scientific topic and/or text(s). The essay's explanations anticipate the audience's knowledge level and concerns about this scientific topic.
----------	--

PROFICIENT	The essay applies scientific reasoning in order to explain how or why the cited evidence supports the claim. The essay demonstrates logical reasoning and understanding of the scientific topic and/or text(s). The essay's explanations attempt to anticipate the audience's knowledge level and concerns about this scientific topic.
DEVELOPING	The essay includes some reasoning and understanding of the scientific topic and/or text(s), but it does not effectively apply scientific ideas or principles to explain how or why the evidence supports the claim.
EMERGING	The essay does not demonstrate clear or relevant reasoning to support the claim or to demonstrate an understanding of the scientific topic and/or text(s).

FOCUS

Focus your writing on the prompt and task.

ADVANCED	The essay maintains strong focus on the purpose and task, using the whole essay to support and develop the claim and counterclaims evenly while thoroughly addressing the demands of the prompt.
PROFICIENT	The essay addresses the demands of the prompt and is mostly focused on the purpose and task. The essay may not acknowledge the claim and counterclaims evenly throughout.
DEVELOPING	The essay may not fully address the demands of the prompt or stay focused on the purpose and task. The writing may stray significantly off topic at times, and introduce the writer's bias occasionally, making it difficult to follow the central claim at times.
EMERGING	The essay does not maintain focus on purpose or task.

ORGANIZATION

Organize your writing in a logical sequence.

ADVANCED	The essay incorporates an organizational structure throughout that establishes clear relationships among the claim(s), counterclaims, reasons, and evidence. Effective transitional words and phrases are included to clarify the relationships between and among ideas (i.e. claim and reasons, reasons and evidence, claim and counterclaim) in a way that strengthens the argument. The essay includes an introduction and conclusion that effectively follows from and supports the argument presented.
PROFICIENT	The essay incorporates an organizational structure with clear transitional words and phrases that show the relationship between and among ideas. The essay includes a progression of ideas from beginning to end, including an introduction and concluding statement or section that follows from and supports the argument presented.
DEVELOPING	The essay uses a basic organizational structure and minimal transitional words and phrases, though relationships between and among ideas are not consistently

clear. The essay moves from beginning to end; however, an introduction and/or conclusion may not be clearly evident.

EMERGING

The essay does not have an organizational structure and may simply offer a series of ideas without any clear transitions or connections. An introduction and conclusion are not evident.

LANGUAGE

Pay close attention to your tone, style, word choice, and sentence structure when writing.

ADVANCED

The essay effectively establishes and maintains a formal style and objective tone and incorporates language that anticipates the reader's knowledge level and concerns. The essay consistently demonstrates a clear command of conventions, while also employing discipline-specific word choices and varied sentence structure.

PROFICIENT

The essay generally establishes and maintains a formal style with few possible exceptions and incorporates language that anticipates the reader's knowledge level and concerns. The essay demonstrates a general command of conventions, while also employing discipline-specific word choices and some variety in sentence structure.

DEVELOPING

The essay does not maintain a formal style consistently and incorporates language that may not show an awareness of the reader's knowledge or concerns. The essay may contain errors in conventions that interfere with meaning. Some attempts at discipline-specific word choices are made, and sentence structure may not vary often.

EMERGING

The essay employs language that is inappropriate for the audience and is not formal in style. The essay may contain pervasive errors in conventions that interfere with meaning, word choice is not discipline-specific, and sentence structures are simplistic and unvaried.