

[Aquaculture, Aquarium, Conservation & Legislation](#)

You are here > [Home](#) · [AACL](#)

AACL Bioflux

[Instructions to authors](#)

[Submission letter](#)

[Model of paper](#)

[Reviewer information pack](#)

[Editorial Board Expanded](#)

[Coverage / databases](#)

[Volume 13\(6\)/2020](#)

[Volume 13\(5\)/2020](#)

[Volume 13\(4\)/2020 \(August, 30\)](#)

[Volume 13\(3\)/2020 \(June, 30\)](#)

[Volume 13\(2\)/2020 \(April, 30\)](#)

[Volume 13\(1\)/2020 \(February, 28\)](#)

[Volume 12\(6\)/2019 \(December, 30\)](#)

[Volume 12\(5\)/2019 \(October, 30\)](#)

[Volume 12\(4\)/2019 \(August, 30\)](#)

[Volume 12\(3\)/2019 \(June, 30\)](#)

[Volume 12\(2\)/2019 \(April, 30\)](#)

[Volume 12\(1\)/2019 \(February, 28\)](#)

[Volume 11\(6\)/2018 \(December, 30\)](#)

[Volume 11\(5\)/2018 \(October, 30\)](#)

[Volume 11\(4\)/2018 \(August, 30\)](#)

[Volume 11\(3\)/2018 \(June, 30\)](#)

[Volume 11\(2\)/2018 \(April, 30\)](#)

[Volume 11\(1\)/2018 \(February, 28\)](#)

[Volume 10\(6\)/2017 \(December, 30\)](#)

[Volume 10\(5\)/2017 \(October, 30\)](#)

[Volume 10\(4\)/2017 \(August, 30\)](#)

[Volume 10\(3\)/2017 \(June, 30\)](#)

Aquaculture, Aquarium, Conservation & Legislation - International Journal of the Bioflux Society

ISSN 1844-9166 (online)

ISSN 1844-8143 (print)

Published by Bioflux - bimonthly -

in cooperation with The Natural Sciences Museum Complex (Constanta, Romania)

Peer-reviewed (each article was independently evaluated before publication by two specialists)

The journal includes original papers, short communications, and reviews on Aquaculture (Biology, Technology, Economics, Marketing), Fish Genetics and Improvement, Aquarium Sciences, Fisheries, Ichthyology, Aquatic Ecology, Conservation of Aquatic Resources and Legislation (in connection with aquatic issues) from wide world.

The manuscripts should be submitted to zoobiomag2004@yahoo.com

Editor-in-Chief:

Petrescu-Mag I. Valentin: USAMV Cluj, Cluj-Napoca, University of Oradea (Romania)

Gavriloaie Ionel-Claudiu (reserve): SC Bioflux SRL, Cluj-Napoca (Romania).

Editors:

Abdel-Rahim Mohamed M.: National Institute of Oceanography and Fisheries, Alexandria (Egypt)

Adascalitei Oana: Maritime University of Constanta, Constanta (Romania)

Amira Aicha Beya: Badji Mokhtar Annaba University, Annaba (Algeria)

Arockiaraj A. Jesu: SRM University, Chennai (India)

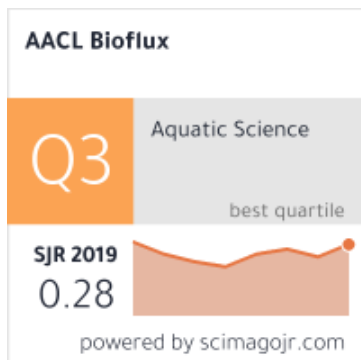
Appelbaum Samuel: Ben-Gurion University of the Negev (Israel)

Baharuddin Nursalwa: Universiti Malaysia Terengganu, Terengganu (Malaysia)

Boaru Anca: USAMV Cluj, Cluj-Napoca (Romania)

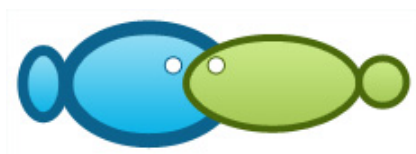
Volume 10(2)/2017 (April, 30)	Botha Miklos: Bioflux SRL, Cluj-Napoca (Romania)
Volume 10(1)/2017 (February, 28)	Breden Felix: Simon Fraser University (Canada)
Volume 9(6)/2016 (December, 30)	Burny Philippe: Universite de Liege, Gembloux (Belgium)
Volume 9(5)/2016 (October, 30)	Caipang Cristopher M.A.: Temasek Polytechnic (Singapore)
Volume 9(4)/2016 (August, 30)	Chapman Frank: University of Florida, Gainesville (USA)
Volume 9(3)/2016 (June, 30)	Coroian Cristian: USAMV Cluj, Cluj-Napoca (Romania)
Volume 9(2)/2016 (April, 30)	Creanga Steofil: USAMV Iasi, Iasi (Romania)
Volume 9(1)/2016 (February, 28)	Cristea Victor: Dunarea de Jos University of Galati, Galati (Romania)
Volume 8(6)/2015 (December, 30)	Das Simon Kumar: Universiti Kebangsaan Malaysia, Bangi, Selangor (Malaysia)
Volume 8(5)/2015 (October, 30)	Dimaggio Matthew A.: University of Florida (USA)
Volume 8(4)/2015 (August, 30)	Firica Cristian Manuel: Spiru Haret University Bucharest, Craiova (Romania)
Volume 8(3)/2015 (June, 30)	Georgescu Bogdan: USAMV Cluj, Cluj-Napoca (Romania)
Volume 8(2)/2015 (April, 30)	Karayucel Ismihan: University of Sinop, Sinop (Turkey)
Volume 8(1)/2015 (February, 28)	Khamesipour Faham: Shiraz University, Shiraz (Iran)
Volume 7(6)/2014 (December, 30)	Kosco Jan: Presov University, Presov (Slovakia)
Volume 7(5)/2014 (October, 30)	Kovacs Eniko: USAMV Cluj, Cluj-Napoca (Romania)
Volume 7(4)/2014 (August, 30)	Mehrad Bahar: Gorgan University of Agricultural Sciences and Nat. Res. (Iran)
Volume 7(3)/2014 (June, 30)	Miclaus Viorel: USAMV Cluj, Cluj-Napoca (Romania)
Volume 7(2)/2014 (April, 15)	Mihociu Tamara: R&D National Institute for Food Bioresources (Romania)
Volume 7(1)/2014 (February, 15)	Molnar Kalman: Hungarian Academy of Sciences, Budapest (Hungary)
Volume 6(6)/2013 (November, 15)	Muchlisin Zainal Abidin: Universiti Sains (Malaysia), Syiah Kuala University (Indonesia)
Volume 6(5)/2013 (September, 15)	Muntean George Catalin: USAMV Cluj, Cluj-Napoca (Romania)
Volume 6(4)/2013 (July, 25)	Nowak Michal: University of Agriculture in Krakow (Poland)
Volume 6(3)/2013 (May, 15)	Nyanti Lee: Universiti Malaysia Sarawak, Sarawak (Malaysia)
Volume 6(2)/2013 (March, 15)	Olivotto Ike: Universita Politecnica delle Marche, Ancona (Italy)
Volume 6(1)/2013 (January, 15)	Oroian Firuta Camelia: USAMV Cluj, Cluj-Napoca (Romania)
Volume 5(5)/2012 (December, 30)	Papuc Tudor: USAMV Cluj, Cluj-Napoca (Romania)
Volume 5(4)/2012 (September, 30)	Parvulescu Lucian: West University of Timisoara (Romania)
Volume 5(3)/2012 (July, 30)	Pasarin Benone: USAMV Iasi, Iasi (Romania)
Volume 5(2)/2012 (June, 30)	Pattikawa Jesaja Ajub: Pattimura University, Ambon (Indonesia)
Volume 5(1)/2012 (March, 15)	Petrescu Dacinia Crina: Babes-Bolyai University, Cluj-Napoca (Romania)
Volume 4(5)/2011 (December, 30)	
Volume 4(4)/2011 (October, 30)	
Volume 4(3)/2011 (July, 30)	

Volume 4(2)/2011 (April, 30)	Petrescu-Mag Ruxandra Malina: Babes-Bolyai University, Cluj-Napoca (Romania)
Volume 4(1)/2011 (January, 30)	Petrovici Milca: West University of Timisoara (Romania)
Volume 3(5)/2010 (December, 5)	Pratasik Silvester Benny: Sam Ratulangi University, Manado (Indonesia)
Volume 3(4)/2010 (December, 1)	Proorocu Marian: USAMV Cluj, Cluj-Napoca (Romania)
Volume 3(3)/2010 (November, 15)	Ray Sunuram: Khulna University (Bangladesh)
Volume 3(2)/2010 (July, 30)	Rhyne Andrew: Roger Williams University; New England Aquarium, Boston (USA)
Volume 3(1)/2010 (February, 28)	Ruchin Alexander B.: Joint Directorate of the Mordovia State Nature Reserve and National Park «Smolny», Saransk (Russia)
Volume 2(4)/2009 (October, 30)	Safirescu Calin: USAMV Cluj, Cluj-Napoca (Romania)
Volume 2(3)/2009 (July, 30)	Serrano Jr. Augusto E.: University of the Philippines Visayas (Philippines)
Volume 2(2)/2009 (April, 30)	Sima Nicusor Flaviu: USAMV Cluj, Cluj-Napoca (Romania)
Volume 2(1)/2009 (January, 30)	Tlusty Michael F.: New England Aquarium, Boston (USA)
Volume 1(2)/2008 (December, 30)	Vesa Stefan Cristian: Iuliu Hatieganu UMF, Cluj-Napoca (Romania)
Volume 1(1)/2008 (September, 30)	Vintila Iuliana: Dunarea de Jos University of Galati, Galati (Romania)
Volume Pilot/2007 (December, 30) - available printed only	Wariaghli Fatima: University Mohammed V in Rabat, Rabat (Morocco)
Pontus Euxinus, Volume 1 (1980) - Parent Journal	Yusli Wardiatno: Bogor Agricultural University, Bogor (Indonesia).



design: www.simple-webdesign.com

Home | Archive | Volume 1 (1) / 2008 | CEEX 140 | Volume 1 (2) / 2008 | Volume 2 (1) / 2009 | Volume 2 (2) / 2009 | Volume 2 (3) / 2009 | Volume 2 (4) / 2009 | Pilot | Volume 3 (1) / 2010 | Volume 3(2)/2010 (July, 30) | Volume 3(3)/2010 | Volume 3(4)/2010 | Volume 3(5)/2010 - ACVAPEDIA 2010 | Volume 4(1)/2011 | Volume 4(2)/2011 - ACVAPEDIA 2010 | Volume 4(3)/2011 | Volume 4(4)/2011 | Volume 4(5)/2011 | Volume 5(1)/2012 (March, 15) | Volume 5(2)/2012 | Volume 5(3)/2012 | Volume 5(4)/2012 | Volume 5(5)/2012 (December, 30) | Volume 6(1)/2013 - ACVAPEDIA 5th edn., Hungary, Szarvas (HAKI), 27-29th of November, 2012 | Volume 6(2)/2013 - ACVAPEDIA 5th edn., Hungary, Szarvas (HAKI), 27-29th of November, 2012 | Volume 6(3)/2013 | Volume 6(4)/2013 | Volume 6(5)/2013 | Volume 6(6)/2013 | Volume 7(1)/2014 | Volume 7(2)/2014 | Volume 7(3)/2014 | Volume 7(4)/2014 | Volume 7(5)/2014 | Volume 7(6)/2014 | Volume 8(1)/2015 | Volume 8(2)/2015 | Volume 8(3)/2015 | Volume 8(4)/2015 | Volume 8(5)/2015 | Volume 8(6)/2015 | Volume 9(1)/2016 | Volume 9(2)/2016 | Volume 9(3)/2016 | Volume 9(4)/2016 | Volume 9(5)/2016 | Volume 9(6)/2016 | Volume 10(1)/2017 | Volume 10(2)/2017 | Volume 10(3)/2017 | Volume 10(4)/2017 | Volume 10(5)/2017 | Volume 10(6)/2017 | Volume 11(1)/2018 | Volume 11(2)/2018 | Volume 11(3)/2018 | Volume 11(4)/2018 | Pontus Euxinus, Volume 1, 1980 | Volume 11(5)/2018 | Volume 11(6)/2018 | Volume 12(1)/2019 | Volume 12(2)/2019 | Volume 12(3)/2019 | Volume 12(4)/2019 | Volume 12(5)/2019 | Volume 12(6)/2019 | Volume 13(1)/2020 | Volume 13(2)/2020 | Volume 13(3)/2020 | Volume 13(4)/2020 | Contact | Site Map



[Aquaculture, Aquarium, Conservation & Legislation](#)

You are here > [Home](#) · [Volume 13\(3\)/2020](#)

AACL Bioflux

[Instructions to authors](#)

[Submission letter](#)

[Model of paper](#)

[Reviewer information pack](#)

[Editorial Board Expanded](#)

[Coverage / databases](#)

[Volume 13\(6\)/2020](#)

[Volume 13\(5\)/2020](#)

[Volume 13\(4\)/2020 \(August, 30\)](#)

[Volume 13\(3\)/2020 \(June, 30\)](#)

[Volume 13\(2\)/2020 \(April, 30\)](#)

[Volume 13\(1\)/2020 \(February, 28\)](#)

[Volume 12\(6\)/2019 \(December, 30\)](#)

[Volume 12\(5\)/2019 \(October, 30\)](#)

[Volume 12\(4\)/2019 \(August, 30\)](#)

[Volume 12\(3\)/2019 \(June, 30\)](#)

[Volume 12\(2\)/2019 \(April, 30\)](#)

[Volume 12\(1\)/2019 \(February, 28\)](#)

[Volume 11\(6\)/2018 \(December, 30\)](#)

[Volume 11\(5\)/2018 \(October, 30\)](#)

[Volume 11\(4\)/2018 \(August, 30\)](#)

[Volume 11\(3\)/2018 \(June, 30\)](#)

[Volume 11\(2\)/2018 \(April, 30\)](#)

[Volume 11\(1\)/2018 \(February, 28\)](#)

[Volume 10\(6\)/2017 \(December, 30\)](#)

[Volume 10\(5\)/2017 \(October, 30\)](#)

[Volume 10\(4\)/2017 \(August, 30\)](#)

[Volume 10\(3\)/2017 \(June, 30\)](#)

Volume 13(3)/2020

First pages, 2020, AACL Bioflux 13(3):i-viii.

Sentosa A. A., Chodrijah U., 2020 Length-weight relationship and growth parameter of Indonesian houndshark (*Hemitriakis indroyonoi* White, Compagno & Dharmadi, 2009) caught from artisanal fisheries in Southern West Nusa Tenggara Waters. AACL Bioflux 13(3):1211-1220.

Nofrizal, Ramdhani F., Oktavia Y., Ramses, Kurniawan R., Arimoto T., 2020. Swimming speed and heart rate of Japanese jack mackerel (*Trachurus japonicus* Temminck & Schlegel, 1844), through electrocardiograph (ECG) monitoring in step-up swimming exercise. AACL Bioflux 13(3):1221-1228.

Sulistiyarto B., Susila N., 2020 Techniques for bloodworm (Chironomid larvae: Diptera) mass culture in tarpaulin tanks. AACL Bioflux 13(3):1229-1234.

Pratama A. F., Masithah E. D., Lokapirnasari W. P., 2020 Enrichment of nutrition of *Brachionus* spp. in the tropical areas. AACL Bioflux 13(3):1235-1241.

Mulyasari G., Irham, Waluyati L. R., Suryantini A., 2020 Livelihood vulnerability to climate change of fishermen in the coastal area of Bengkulu Province, Indonesia. AACL Bioflux 13(3):1242-1254.

Imron I., Marnis H., Iswanto B., Suprpto R., 2020 Development of a PCR marker for the identification of resistance to Motile Aeromonad Septicemia disease in African catfish (*Clarias gariepinus*). AACL Bioflux 13(3):1255-1267.

Bouzaidi H., Haroufi O., Khaili A., El Fanichi C., Maatouk M., El-Moumni B., Daoudi M., 2020 Stock assessment and spatial distribution of the smooth clam *Callista chione* (Linnaeus, 1758) exploited in the occidental Mediterranean Sea of Morocco. AACL Bioflux 13(3):1268-1284.

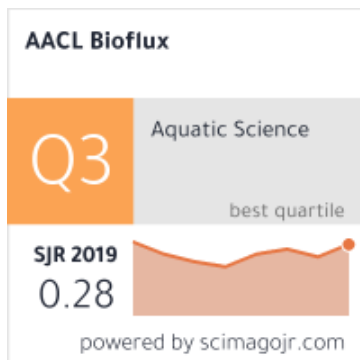
Karnila R., Dewita, Ilham D., Sidauruk S. W., 2020 Utilization of papain enzymes in the production of protein hydrolysates of yellow pike conger (*Congresox talabon*). AACL Bioflux 13(3):1285-1291.

Suparmi, Effendi I., Nursyirwani, Dewita, Sidauruk S. W., Windarti, 2020 The potential of hydrolyzed, concentrated, and isolated protein from *Acefes erythraeus* as natural antioxidant. AACL Bioflux 13(3):1292-1299.

Widiastuti, Faiqoh E., 2020 Abundance assessment of indicator bacteria for coral health in the Pemuteran Waters, North Bali, Indonesia. AACL Bioflux 13(3):1300-1307.

- Volume 10(2)/2017 (April, 30) **Pane A. R. P., Alnanda R., Prihatingsih., Hasanah A., Suman A., 2020 Biological aspect and exploitation status of striped threadfin fish (*Polydactylus plebeius* Broussonet, 1782) in Merauke waters and its surrounding, Papua Province, Indonesia. AACL Bioflux 13(3):1308-1319.**
- Volume 10(1)/2017 (February, 28)
- Volume 9(6)/2016 (December, 30)
- Volume 9(5)/2016 (October, 30) **Srithongthum S., Au H. L., Amornsakun T., Chesoh S., Jantarat S., Suzuki N., Takeuchi Y., Hassan A., Kawamura G., Lim L. S., 2020 Yolk-sac absorption, mouth size development, and first exogenous feeding of Sultan fish, *Leptobarbus hoevenii*. AACL Bioflux 13(3):1320-1327.**
- Volume 9(4)/2016 (August, 30)
- Volume 9(3)/2016 (June, 30)
- Volume 9(2)/2016 (April, 30) **Ghufron M., Rahardja B. S., Sari L. A., 2020 The temporal variation of ammonia and nitrite content in extensive ponds with tilapia. AACL Bioflux 13(3):1328-1335.**
- Volume 9(1)/2016 (February, 28)
- Volume 8(6)/2015 (December, 30) **Maryani, Ratnasari I., Alhidayat S. A., Handayani T., Nursiah, Tanduh Y., 2020 Immunostimulant activities of yellow root (*Arcangelisia flava* Merr.) extract on *Edwardsiella tarda* infection. AACL Bioflux 13(3):1336-1344.**
- Volume 8(5)/2015 (October, 30)
- Volume 8(4)/2015 (August, 30)
- Volume 8(3)/2015 (June, 30) **Fahmy A. F., El-Ghazaly N. A., Sayed A., Areef K., 2020 Impact of purifying aquatic environment on *Tilapia zillii* production quality, caught from Lake Mariout, Egypt. Challenges and solutions! AACL Bioflux 13(3):1345-1354.**
- Volume 8(2)/2015 (April, 30)
- Volume 8(1)/2015 (February, 28) **Purnama M. F., Sari S. F., Admaja A. K., Salwiyah, Abdullah, Haslianti, 2020 Spatial distribution of invasive alien species *Tarebia granifera* in Southeast Sulawesi, Indonesia. AACL Bioflux 13(3):1355-1365.**
- Volume 7(6)/2014 (December, 30)
- Volume 7(5)/2014 (October, 30)
- Volume 7(4)/2014 (August, 30) **Varga D., Hancz C., Szabo A., 2020 Selective mobilization of fatty acids in common carp (*Cyprinus carpio*) during long-term starvation. AACL Bioflux 13(3):1366-1373.**
- Volume 7(3)/2014 (June, 30)
- Volume 7(2)/2014 (April, 15) **Dewi P., Hutajulu J., Nugraha E., Yusrizal, Sumbung S., Johari, Leilani A., 2020 Financial analysis of purse seine fisheries in Natuna waters, Indonesia. AACL Bioflux 13(3):1374-1382.**
- Volume 7(1)/2014 (February, 15)
- Volume 6(6)/2013 (November, 15)
- Volume 6(5)/2013 (September, 15) **Hidayat A. S., Agusliani E., 2020 Beach tourism, whether benefit or disaster for coastal fishermen of Tanah Laut Regency, South Kalimantan Province. AACL Bioflux 13(3):1383-1393.**
- Volume 6(4)/2013 (July, 25)
- Volume 6(3)/2013 (May, 15) **Razali F. N., Ismail N., Fisal A., Tuan Zainazor T. C., Mohamad F., Shamsuddin A., 2020 Updating a new trend of horseshoe crab feeding behavior in captivity: towards a healthy practice of horseshoe crabs rearing. AACL Bioflux 13(3):1394-1409.**
- Volume 6(2)/2013 (March, 15)
- Volume 6(1)/2013 (January, 15)
- Volume 5(5)/2012 (December, 30) **Firdaus M., Salim G., Cahyadi J., Weliyadi E., Bintoro G., 2020 Model and nature of growth of red snapper fish (*Lutjanus argentimaculatus* (Forsskal, 1775)) fishing catch of bottom fish pots in Bunyu waters, North Kalimantan. AACL Bioflux 13(3):1410-1421.**
- Volume 5(4)/2012 (September, 30)
- Volume 5(3)/2012 (July, 30)
- Volume 5(2)/2012 (June, 30)
- Volume 5(1)/2012 (March, 15) **Cahyaningtyas I., Utama K. W., Sukmadewi Y., 2020 Judicial bureaucratic reform in the Indonesian Fisheries Court. AACL Bioflux 13(3):1422-1427.**
- Volume 4(5)/2011 (December, 30)
- Volume 4(4)/2011 (October, 30) **Hidayat T., Boer M., Kamal M. M., Zairion, Suman A., Mardlijah S., 2020 Population dynamics of longtail tuna (*Thunnus tonggol*) in the Java Sea and adjacent waters. AACL Bioflux 13(3):1428-1436.**
- Volume 4(3)/2011 (July, 30)

- Volume 4(2)/2011 (April, 30)
- Volume 4(1)/2011 (January, 30)
- Volume 3(5)/2010 (December, 5)
- Volume 3(4)/2010 (December, 1)
- Volume 3(3)/2010 (November, 15)
- Volume 3(2)/2010 (July, 30)
- Volume 3(1)/2010 (February, 28)
- Volume 2(4)/2009 (October, 30)
- Volume 2(3)/2009 (July, 30)
- Volume 2(2)/2009 (April, 30)
- Volume 2(1)/2009 (January, 30)
- Volume 1(2)/2008 (December, 30)
- Volume 1(1)/2008 (September, 30)
- Volume Pilot/2007 (December, 30) - available printed only
- Pontus Euxinus, Volume 1 (1980) - Parent Journal



Prabandari A. P., Hananto P. W. H., Lestari S. N., Roisah K., 2020 The legal protection of intellectual property rights toward the maritime scientific researches in Indonesian seas. AACL Bioflux 13(3):1437-1444.

Yusrizal, Nugraha E., Syamsuddin S., Danapraja S., Jaenudin A., Basino, Aulia M. R., Endo S., Purwanto Y., 2020 Composition of target species, bycatch, hook rate and fluctuation for longline tuna fishing in the Eastern Indian Ocean, Indonesia. AACL Bioflux 13(3):1445-1452.

Hapsari R. W., Hartoko A., Hendrarto B., 2020 Mangrove vulnerability index and carbon algorithm using Sentinel-2A satellite data at Kemujan Island, Karimunjawa Islands, Indonesia. AACL Bioflux 13(3):1453-1462.

Ridwan F. F., Triastuti J., Mukti A. T., 2020 The effect of mercury chloride in different salinities on the histopathology of juvenile *Oreochromis niloticus*. AACL Bioflux 13(3):1463-1472.

Taufiq-Spj N., Hutabarat J., Trianto A., Wirasatria A., Indarjo A., Suryono S., Ario R., Pratikto I., 2020 The use of different water volume to measure the growth and survival rates of *Anguilla bicolor* caught from Nusawungu riverines, Cilacap, Indonesia. AACL Bioflux 13(3):1473-1482.

Soemarmi A., Indarti E., Pujiyono, Wardhani L. T. A. L., Diamantina A., Ristyawati A., 2020 The use of the vessel monitoring system as fishery ship obligations in Indonesia. AACL Bioflux 13(3):1483-1494.

Santos D. A., Manliclic A. D. C., Corpuz M. N. C., 2020 Length-weight relationship and condition factor of silver therapon, *Leiopotherapon plumbeus* (Terapontidae) from two brackishwater habitats. AACL Bioflux 13(3):1495-1503.

Yulinda E., Saad M., Yusuf M., 2020 A study on the economic potential of blood cockles (*Anadara granosa*) in Rokan Hilir, Riau Province, Indonesia. AACL Bioflux 13(3):1504-1510.

Erzad A. F., Hartoko A., Muskananfola M. R., 2020 Seagrass ecosystem as fish larvae habitat and its biomass algorithm from Sentinel-2A Satellite at Kemujan Island, Karimunjawa, Indonesia. AACL Bioflux 13(3):1511-1521.

Pattiasina T. F., Sartimbul A., Herawati E. Y., Semedi B., Mulyadi, Krey M., Simatauw F. F., 2020 Assessing functional diversity and biomass of herbivorous fish as resilience indicators of coral reef ecosystems in Doreri Bay, Manokwari Regency, Indonesia. AACL Bioflux 13(3):1522-1534.

Krisnafi Y., Wibowo B., Alamsah S., Sembiring K., Sudinno D., Rahman A., Alfariis L., Astiyani W. P., 2020 General overview on financial aspects of lift net fisheries operation in Pangandaran, West Java, Indonesia. AACL Bioflux 13(3):1535-1545.

Mulyadi, Tang U. M., Amin B., Sukendi, Pamukas N. A., Windarti, 2020 Osmotic performance rate, stress response, and growth performance of silver pompano (*Trachinotus blochii*) reared in different salinities using recirculating culture system. AACL Bioflux 13(3):1546-1556.

- Izzabaha O., Gjije A., Dergoun A., Saad Z., Ait Chattou E. M., Chairi H., Idhalla M., 2020 First trial on rearing European sea bass *Dicentrarchus labrax* in floating cages in Dakhla bay- SW Morocco, Atlantic Ocean. AACL Bioflux 13(3):1557-1569.
- Oedjoe M. D. R., Rebhung F., Sunadji, 2020 The impact of the transportation of dry systems on the growth and carrageenan content of seaweed (*Kappaphycus alvarezii*) in Batu Bao water, Kupang District, East Nusa Tenggara, Indonesia. AACL Bioflux 13(3):1570-1575.
- Hanifah A., Suharyanto, Baskoro M. S., 2020 Season pattern of pole and line skipjack tuna (*Katsuwonus pelamis*) catching in Kupang, Indonesia. AACL Bioflux 13(3):1576-1584.
- Feliatra F., Nursyirwani N., Zirna A. P., Lukistyowati I., Mulyadi A., Adelina A., 2020 Antibacterial potential of heterotrophic bacteria isolated in Siak River estuary, Indonesia, against pathogens in fish. AACL Bioflux 13(3):1585-1594.
- Chowdhury G., Hossain M. S., Dey T., Akhtar S., Jinia M. A., Das B., Islam M. J., Iqbal M. M., 2020 Effects of dietary probiotics on the growth, blood chemistry and stress response of Pabda catfish (*Ompok pabda*) juveniles. AACL Bioflux 13(3):1595-1605.
- Bambang A. N., Wijayanto D., 2020 The perception and aspirations of purse seine fishermen toward the prohibition of 'cantrang' (Danish seine) in Bajomulyo, Pati Regency-Indonesia. AACL Bioflux 13(3):1606-1613.
- Pangemanan N. P. L., Kepel R. C., Bataragoa N. E., Tumbol R. A., Sahami F. M., 2020 Morphological and molecular identification of nike fish, *Ophieleotris aporos* in Tondano Lake, North Sulawesi, Indonesia. AACL Bioflux 13(3):1614-1621.
- Helmiati S., Rustadi, Isnansetyo A., Zuprizal, 2020 Replacement of fish meal with fermented Moringa leaves meal and its effect on the growth performance of red tilapia (*Oreochromis* sp.). AACL Bioflux 13(3):1622-1632.
- Chaw V. V., Wong A. B. H., Fikri A. H., 2020 Diversity of aquatic macroinvertebrate assemblages and their functional feeding groups in the streams of Kota Marudu, Sabah. AACL Bioflux 13(3):1633-1649.
- Parakkasi P., Syamsuddin R., Najamuddin, Haris A., Rani C., 2020 Shading effect of seaweed farming on the growth and health of the corals *Porites cylindrica* and *Acropora formosa*. AACL Bioflux 13(3):1650-1664.
- Tilaar F., Kreckhoff R. L., Wagey B. T., Bucol L. A., 2020 Ecology, diversity and biomass of seagrass species in Manado Tua Island, North Sulawesi, Indonesia. AACL Bioflux 13(3):1665-1673.
- Cahyadi J., Satriani G. I., Gusman E., Weliyadi E., 2020 Inhibiting *Vibrio harveyi* infection in *Penaeus monodon* using enriched *Artemia salina* with mangrove fruit *Sonneratia alba* extract. AACL Bioflux 13(3):1674-1681.
- Sutarjo G. A., Refki M., Zubaidah A., Handajani H., Andriawan S., 2020 Recombinant growth hormone supplemented on feed to the growth performance of *Barbodes binotatus*. AACL Bioflux 13(3):1682-1688.

Nurdin J., Irawan D., Syandri H., Nofrita, Rizaldi, 2020 Phytoplankton and the correlation to primary productivity, chlorophyll-a, and nutrients in Lake Maninjau, West Sumatra, Indonesia. AACL Bioflux 13(3):1689-1702.

Arifin T., Daulat A., Ramdhan M., Rahmania R., Yulius, Setyawidati N. A., Gusmawati N., Kusuma L. P. A. C., 2020 The use of high resolution satellite imagery to identify coral reef cover and its correlation with the abundance of reef fish in Nias Island, North Sumatera, Indonesia. AACL Bioflux 13(3):1703-1714.

Sulardiono B., Anggoro S., Yuniati R., 2020 Exploration of the potential of *Holothuria atra* bioactive compounds based on their habitat characteristics. AACL Bioflux 13(3):1715-1722.

Manginsela F. B., Rompas R. M., Mamuya G. E., Lumingas L. J. L., 2020 Otolith size and shape index of mackerel scad *Decapterus macarellus* (Cuvier, 1833) from Manado Bay and Kema Bay, North Sulawesi, Indonesia. AACL Bioflux 13(3):1723-1734.

Khatimah K., Yasir I., Tresnati J., Niartiningsih A., Yaqin K., Aprianto R., Tuwo A., 2020 Preliminary study on the potential of *Sargassum* macroalgae as lead (Pb) biosorbent agents. AACL Bioflux 13(3):1735-1745.

Mulyani S., Tuwo A., Syamsuddin R., Jompa J., Cahyono I., 2020 Effect of *Kappaphycus alvarezii* mariculture on the recruitment of scleractinian corals. AACL Bioflux 13(3):1746-1757.

Lumbanraja A. D., Musyafah A. A., Saraswati R., Indreswari T. L., 2020 The effect of GPA IGR-4 on Indonesian government policy on marine litter. AACL Bioflux 13(3):1758-1763.

Elfidasari D., Ismi L. N., Sugoro I., 2020 Heavy metal concentration in water, sediment, and *Pterygoplichthys pardalis* in the Ciliwung River, Indonesia. AACL Bioflux 13(3):1764-1778.

design: www.simple-webdesign.com

Home | Archive | Volume 1 (1) / 2008 | CEEX 140 | Volume 1 (2) / 2008 | Volume 2 (1) / 2009 | Volume 2 (2) / 2009 | Volume 2 (3) / 2009 | Volume 2 (4) / 2009 | Pilot | Volume 3 (1) / 2010 | Volume 3(2)/2010 (July, 30) | Volume 3(3)/2010 | Volume 3(4)/2010 | Volume 3(5)/2010 - ACVAPEDIA 2010 | Volume 4(1)/2011 | Volume 4(2)/2011 - ACVAPEDIA 2010 | Volume 4(3)/2011 | Volume 4(4)/2011 | Volume 4(5)/2011 | Volume 5(1)/2012 (March, 15) | Volume 5(2)/2012 | Volume 5(3)/2012 | Volume 5(4)/2012 | Volume 5(5)/2012 (December, 30) | Volume 6(1)/2013 - ACVAPEDIA 5th edn., Hungary, Szarvas (HAKI), 27-29th of November, 2012 | Volume 6(2)/2013 - ACVAPEDIA 5th edn., Hungary, Szarvas (HAKI), 27-29th of November, 2012 | Volume 6(3)/2013 | Volume 6(4)/2013 | Volume 6(5)/2013 | Volume 6(6)/2013 | Volume 7(1)/2014 | Volume 7(2)/2014 | Volume 7(3)/2014 | Volume 7(4)/2014 | Volume 7(5)/2014 | Volume 7(6)/2014 | Volume 8(1)/2015 | Volume 8(2)/2015 | Volume 8(3)/2015 | Volume 8(4)/2015 | Volume 8(5)/2015 | Volume 8(6)/2015 | Volume 9(1)/2016 | Volume 9(2)/2016 | Volume 9(3)/2016 | Volume 9(4)/2016 | Volume 9(5)/2016 | Volume 9(6)/2016 | Volume 10(1)/2017 | Volume 10(2)/2017 | Volume 10(3)/2017 | Volume 10(4)/2017 | Volume 10(5)/2017 | Volume 10(6)/2017 | Volume 11(1)/2018 | Volume 11(2)/2018 | Volume 11(3)/2018 | Volume 11(4)/2018 | Pontus Euxinus, Volume 1, 1980 | Volume 11(5)/2018 | Volume 11(6)/2018 | Volume 12(1)/2019 | Volume 12(2)/2019 | Volume 12(3)/2019 | Volume 12(4)/2019 | Volume 12(5)/2019 | Volume 12(6)/2019 | Volume 13(1)/2020 | Volume 13(2)/2020 | Volume 13(3)/2020 | Volume 13(4)/2020 | Contact | Site Map



The effect of mercury chloride in different salinities on the histopathology of juvenile *Oreochromis niloticus*

Firdla F. Ridwan, Juni Triastuti, Akhmad T. Mukti

Department of Marine, Faculty of Fisheries and Marine, Universitas Airlangga, Surabaya, Indonesia. Corresponding author: J. Triastuti, triastutijunitri@gmail.com

Abstract. The increased concentration of heavy metals, especially mercury chloride, in the aquatic environment results in toxicity for the life of aquatic organisms, including Nile tilapia (*Oreochromis niloticus* L.). This study aimed to determine the histopathological damage of heavy metal mercury (Hg) exposure in different salinities to juvenile Nile tilapia. The research method was an experimental study with a Completely Randomized Design (CRD), using five different treatments with three replications. The histopathological damage of the gill and skin of Nile tilapia were determined. Data analysis conducted in this study consisted in the Kruskal-Wallis test with the reflection scoring method and continued with the Mann-Whitney U test. The results of histopathological examination of the gills and skin showed damage in the gills, including edema, hyperplasia, hemorrhage and necrosis. The highest damaging effect of mercury chloride exposure on gills, especially hyperplasia, was in treatment A, with 0 ppt salinity and 0.016 mg L⁻¹ of chloride. Meanwhile, the histopathological observations in the skin did not show significant differences between treatment groups. Mercury chloride exposure in different salinities had an effect on the histopathological damage of gill organs and the skin of Nile tilapia. The results also showed the potential of salinity to suppress the toxicity of mercury chloride and prevent damage to the gills and skin of Nile tilapia.

Key Words: gills, histopathology, Nile tilapia, HgCl₂, skin.

Introduction. Industrial, agricultural, and mining developments facilitate the increased metal pollution in the environment, even in upstream waters and tributaries, among others (Sericano et al 1995). The high concentration of heavy metals in the aquatic environment can be toxic to the life of aquatic organisms. Mercury, as one of the heavy metals found in the environment, is neurotoxic and enters the aquatic ecosystem through industrial waste (Verma & Dwivedi 2013). Mercury levels in freshwater naturally range from 10 to 100 µL, whereas in marine waters it ranges from <10 to 30 µL (Moore 1990). Mercury that accumulates in the body of aquatic animals will damage or stimulate the enzymatic system. As a result, it causes a decrease in the adaptability of these animals to polluted environments. In fish, the organs that accumulate the highest mercury content are the kidneys, liver and gills. The toxicity of heavy metals that injure gills and other external tissue structures can cause the death to the fish. Increasing temperature, decreasing pH, and decreasing water salinity can lead to greater levels of heavy metal bioaccumulation (Wang & Wong 2003). Other studies also suggest that the toxic effects of mercury are influenced by salinity (Modassir 2000), and that metal concentrations will increase with decreasing salinity (Connell & Miller 1984).

Accumulation of heavy metals in the gills can result in changes in the metabolism and function of some enzymes, thus, disrupting the work function of the gills. In addition, the gill tissue damage is characterized by cells experiencing necrosis, hypertrophy and edema (Önning et al 1996). The microscopic image of an organ that experiences necrosis shows changes in tissue color (the color becomes paler) and in tissue consistency (the consistency becomes softer). High levels of mercury in waters are found in developing countries, including Indonesia.

The mercury content in the Surabaya river, Indonesia, increased from 0.0011 to 0.0049 mg L⁻¹ in 2001 (Yuniar 2009), and from 0.018 to 0.062 mg L⁻¹ in 2011 (Fauziyah 2012). The high level of mercury is not only polluting the waters, but it can also accumulate in the body of fish and other aquatic biota. This can be seen in cases of mercury pollution in Minamata Bay, Japan, where the mercury content in coastal shells in non-polluted areas ranged between 1.7 and 6 mg L⁻¹, while in Minamata Bay it ranged from 11 to 39 mg L⁻¹ (Yuniar 2009). Mercury that enters the waters can easily be tied to the chlorine in seawater. Subsequently, mercury enters the body tissues of living organisms through several paths, including the respiratory tract, digestive organs, and skin. Mercury that enters the body cannot be digested, and will be dissolved in fat. Fat-soluble metals are capable of penetrating cell membranes, so eventually mercury ions will accumulate in cells and other organs. The highest accumulation is usually in detoxifying organs (liver) and excretory organs (kidneys) (Dallinger et al 1987). The interaction of fish with its environment affects the digestion, osmoregulation, respiration, reproduction and metabolism. If the condition of the water experiences changes because of pollutants (in this case heavy metals) that enter continuously for long periods of time, it will cause changes in the immune system, blood, organs and other tissue structures in the fish (Hardi & Handayani 2015).

Nile tilapia (*Oreochromis niloticus*) is a freshwater fish species farmed in aquaculture, being classified as a fish with a high tolerance to the environmental parameters (Mahasri et al 2018; Mukti et al 2019; Soegianto et al 2017; Zainuddin et al 2017). Furthermore, Environmental Protection Agencies (EPA) suggested the use of Nile tilapia as test animals (Utami et al 2018) in different experiments. This species meets the requirements of extensive distribution, wide cultivation, a high ability to tolerate bad environmental parameters and is easily maintained in the laboratory (Rahim & Tuiyo 2015). In general, fish species have the ability to avoid the effects of water pollution. However, fish that live in limitative habitats (such as rivers, lakes and bays) cannot escape the effects of pollution. Based on these problems, a study was conducted to determine the effect of exposure to mercury (Hg) on Nile tilapia in different salinity concentrations on some organs, especially gills and skin.

Material and Method

Preparation of Nile tilapia and rearing conditions. This research was conducted in January - March 2017. The experiment was carried out for 30 days, with an acclimatization period of three weeks beforehand. Histopathological preparations and observations were carried out at the Laboratory of Anatomy and Microbiology, Faculty of Fisheries and Marine, Airlangga University, Surabaya, Indonesia. The tilapia were obtained from the Pandaan Freshwater Cultivation Service Unit, Pasuruan, Indonesia. The experiment used a total of 90 fish, with a length between 7-8 cm. The fish were transported to an aquarium from the Practical Laboratory. Before the fish were placed in the test media, selection was carried out to separate defective fish from healthy fish. Acclimatization was carried out for one week after the fish was placed in fresh water, then one week in 10 ppt salinity and another week in a salinity of 20 ppt. This was conducted so that fish do not experience stress due to sudden changes in salinity levels. In the process of acclimatization, the fish were fed a standard diet. Acclimatized fish were transferred to the test aquarium according to the salinity prepared beforehand, after a fasting period of 24 hours.

Determination of mercury chloride dosage. The concentration of mercury chloride used was obtained from the results of research conducted by Yuniar (2009). The study states that the safe concentration for Nile tilapia juveniles is 0.016 mg L⁻¹ (Yuniar 2009). Dissolution of powdered mercury chloride is carried out in water with a concentration of 10 ppm to produce a stock solution. Afterwards, the stock solution of mercury chloride was dissolved by using Aquadest with a dose of 0.016 mg L⁻¹.

The calculation of heavy metal mercury chloride with standard manufacturing solutions was carried out using molecular weight calculation, molarity, and dissolution.

The weighing process was conducted with analytical scales before mercury was added to the media. Then, the mercury powder was dissolved in distilled water, according to the calculations.

Determination of salinity. The salinity concentrations used were 0 ppt, 10 ppt and 20 ppt. The concentration selection was based on the concentrations that Nile tilapia find in the aquatic environment. The process of making saline water implied diluting seawater in fresh water.

Histopathological analysis. The histopathological preparation was conducted after exposure to mercury. Before being dissected, the fish were monitored. The gills and skin were surgically removed. Subsequently, the organs were inserted into sterile containers and soaked with 10% neutral buffered formalin (BNF) for at least 24 hours.

The results were analyzed using a scoring method, the Pantung method (Table 1), which aimed to determine the organ damage with scores from 0 to 3, depending on the level and extent of changes that occur due to mercury exposure. The histopathological symptoms observed were edema, hyperplasia, hemorrhage and necrosis. The percentage of the scoring values used are presented in Table 1.

Table 1
The scoring value of histopathological changes in juvenile Nile tilapia (*Oreochromis niloticus*)

<i>Observed parameter</i>	<i>Score 0 (normal)</i>	<i>Score 1 (mild)</i>	<i>Score 2 (moderate)</i>	<i>Score 3 (severe)</i>
Edema	Absent	Less than 30% of the observed area	30% -70% of the observed area	More than 70% of the observed area
Hyperplasia	Absent	Less than 30% of the observed area	30% -70% of the observed area	More than 70% of the observed area
Necrosis	Absent	Less than 30% of the observed area	30% -70% of the observed area	More than 70% of the observed area
Hemorrhage	Absent	Less than 30% of the observed area	30% -70% of the observed area	More than 70% of the observed area

Note: source - Pantung et al (2008).

Experimental design. This study used a completely randomized design with three treatments and a control and five replications, with different salinities and the same mercury chloride (HgCl₂) exposure. The treatments in this study were: control (0 ppt salinity without mercury chloride); A (0 ppt salinity with mercury chloride); B (10 ppt salinity with mercury chloride); and C (20 ppt salinity with mercury chloride).

Water quality. The juveniles of Nile tilapia were maintained in an aquarium with 15 L of water. During the research, the water quality examinations were carried out twice a day, in the morning and evening. The temperature, dissolved oxygen (DO) (mg L⁻¹), pH, ammonia (mg L⁻¹) and salinity (ppt) were measured in the morning and evening. The optimal temperature for Nile tilapia is between 25-30°C.

Statistical analysis. The histopathological results of the study were analyzed using a Kruskal-Wallis test (one-way ANOVA) to find out the differences between the samples. The Mann-Whitney U test followed.

Results and Discussion

Survival rate. The survival rate of Nile tilapia in water with mercury chloride decreased (Table 2). No fish survived in treatment A after 30 days.

Table 2

Survival rate of juvenile Nile tilapia (*Oreochromis niloticus*) exposed to mercury chloride in different salinities

Treatment	Survival rate in all repetitions (%)					Σ	x±SD
	1	2	3	4	5		
A	0	0	0	0	0	0	0
B	60	40	50	40	10	40	16.7
C	50	30	50	60	60	50	10.95

Test results of histopathological scoring for gills in juvenile Nile tilapia. It can be concluded that there were significant differences between all treatments in terms of hyperplasia, hemorrhage and necrosis (Table 4). There was no significant difference in the treatments for edema. A normal score has values between 0 and 0.75. A low damage score has values between 0.75 and 1.5. Higher scores, between 1.5 and 2.25, show a medium damage, while high damage presents scores ranging from 2.25 to 3.

Table 3

Histopathological damage of gills in Nile tilapia (*Oreochromis niloticus*) exposed to HgCl₂ in different salinities

Treatment	Edema	Hyperplasia	Hemorrhage	Necrosis
Control (0 ppt)	1.1 ^a	0.9 ^a	1.2 ^a	0.4 ^a
A (0 ppt + 0.016 mg L ⁻¹ HgCl ₂)	1.7 ^a	2.4 ^b	2.1 ^b	1.1 ^{ab}
B (10 ppt + 0.016 mg L ⁻¹ HgCl ₂)	1.7 ^a	1.8 ^b	1.6 ^{ab}	1.3 ^{ab}
C (20 ppt + 0.016 mg L ⁻¹ HgCl ₂)	2.0 ^a	2.1 ^b	2.1 ^b	1.4 ^b

Note: different superscripts in the same column show significant differences (P<0.05).

The average damage scores regarding hyperplasia in different treatments show that the control treatment was significantly different from treatments A, B and C, which did not present differences among themselves. There were no differences regarding the edema scores between treatments. In terms of hemorrhage, it can be seen that treatments A and C showed no differences, but were significantly different from the control treatment, while treatment B was similar with all other situations. There were no differences in necrosis scores among A, B and C treatments, but the control treatment was significantly different from the C treatment, while showing similar results with the ones from A and B. Based on the damage observation on juvenile Nile tilapia due to mercury chloride exposure in 0 ppt, 10 ppt and 20 ppt salinity, there were visible damages to the gills. The gill damage can be seen in Figure 1.

Edemas were found in the form of perfect spheres with fluid inside. Hyperplasia was found in all treatments, however, in different amounts and with different levels of damage. In the control, there was no necrosis in the gills. It can be said that the damage caused by exposure to mercury chloride is relatively mild. In addition to hyperplasia and edema, the presence of hemorrhages in the gills was also observed in all treatments, but with a different degree of damage.

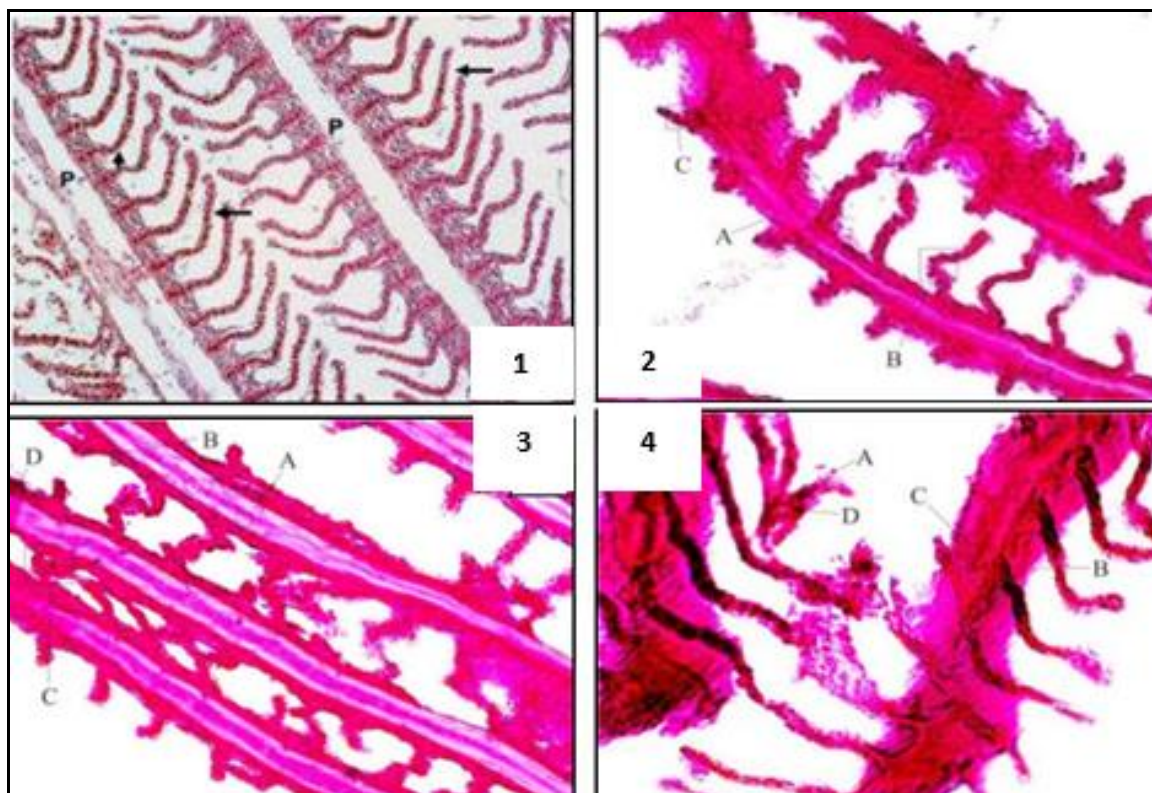


Figure 1. The histopathological section of gills in Nile tilapia (*Oreochromis niloticus*) exposed to HgCl₂ in different salinities. 1 - normal gills (Sharon & Zilberg 2012); 2 - treatment A (0 ppt salinity + 0.016 mg L⁻¹ HgCl₂); 3 - treatment B (10 ppt salinity + 0.016 mg L⁻¹ HgCl₂); 4 - treatment C (20 ppt salinity + 0.016 mg L⁻¹ HgCl₂). A - edema; B - hyperplasia; C - hemorrhage; D - necrosis.

Damage in the skin of Nile tilapia. It can be concluded that there was no significant difference between treatments (Table 4). A normal score has values between 0 and 0.75. A low damage score has values between 0.75 and 1.5. Higher scores, between 1.5 and 2.25, show a medium damage, while high damage presents scores ranging from 2.25 to 3.

Table 4

Histopathology of skin damage of juvenile Nile tilapia (*Oreochromis niloticus*) exposed to HgCl₂ in different salinities

Treatment	Edema	Hyperplasia	Necrosis
Control (0 ppt salinity)	1.5 ^a	1.5 ^a	1.2 ^a
A (0 ppt salinity + 0.016 mg L ⁻¹ HgCl ₂)	1.5 ^a	2.1 ^a	1.8 ^a
B (10 ppt salinity + 0.016 mg L ⁻¹ HgCl ₂)	2.1 ^a	1.7 ^a	1.3 ^a
C (20 ppt salinity + 0.016 mg L ⁻¹ HgCl ₂)	1.7 ^a	1.3 ^a	0.7 ^a

Note: the same superscript in the same column shows no significant difference (P>0.05).

Table 4 shows that the average scores of edema, hyperplasia and necrosis damage in the skin in all situations presented no significant differences. Histopathological observations determined that there was damage to the skin of juvenile Nile tilapia exposed to mercury chloride in all treatments and control. The skin damage produced by mercury chloride exposure in different salinities can be seen in Figure 2.

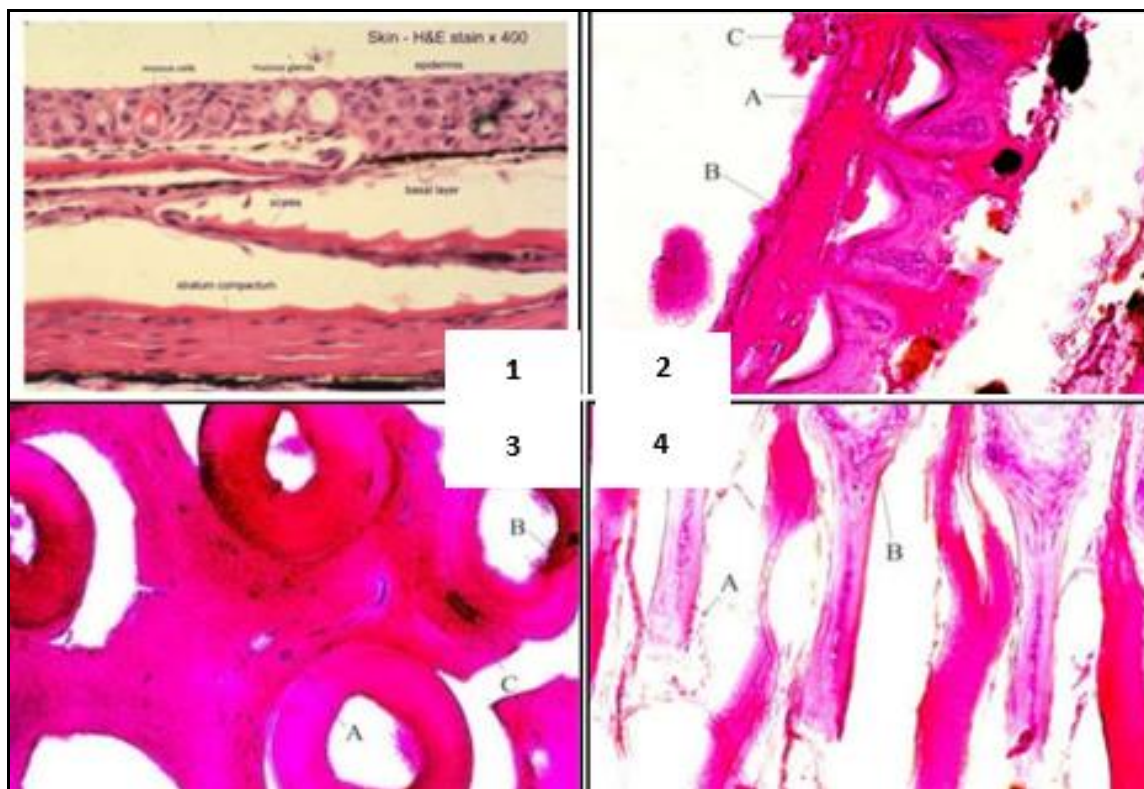


Figure 2. Skin section of juvenile Nile tilapia (*Oreochromis niloticus*) exposed to HgCl₂ in different salinities. 1 - normal skin (Poleksic et al 2010); 2 - treatment A (0 ppt salinity + 0.016 mg L⁻¹ HgCl₂); 3 - treatment B (10 ppt salinity + 0.016 mg L⁻¹ HgCl₂); 4 - treatment C (20 ppt salinity + 0.016 mg L⁻¹ HgCl₂). A - edema; B - hyperplasia; C - necrosis.

Based on Figure 2, the results of observations regarding skin damage due to HgCl₂ exposure in different salinities showed that edemas, hyperplasia and necrosis were present. In treatment C no necrosis was found, meaning that no cell death occurred in the skin of juvenile Nile tilapia. However, edema was found in the form of increased fluid in the tissue. The lack of salinity triggered cell damage until necrosis in treatment A, with HgCl₂ exposure to a salinity of 0 ppt and 10 ppt. In treatment C there were only changes or damage in the form of edemas and hyperplasia.

Water quality. Water quality parameters include temperature, DO, pH, ammonia, and salinity. The parameter values are presented in Table 5. The range of the parameters of water quality during the exposure period was still in the optimal range for the life of juvenile Nile tilapia.

Table 5

Water quality during the experiment

Water Quality Parameter	Control	A	B	C
Temperature (°C)	25.5-30	25.5-30	25.5-30	25.5-30
Salinity (ppt)	0	0	10	20
pH	5.8-8.9	5.5-9.1	5.7-9.2	5.8-9.2
Ammonia (mg L ⁻¹)	0-0.5	0-0.5	0-1	0-0.5
Dissolved oxygen (mg L ⁻¹)	4.8-5.6	4.14-5.09	4.88-5.06	4.6-6

Histopathological damage was observed in all treatments, including the control. This is presumably due to water having no exchange during the maintenance period. This is in line with the results of a previous study, stating that the accumulation of heavy metals

from water in the fish is influenced by water quality (Purnomo & Muchyiddin 2007). However, the water quality during the experiment was generally in the optimal range for the maintenance of Nile tilapia.

The results of the histopathological examinations of the gills and skin showed damage. Damage in the gills included edemas, hyperplasia, hemorrhage and necrosis. Gill damage is in normal to low levels. The initial damage that occurs is hyperplasia, which develops into edemas and hemorrhages. However, the treatments did not cause severe necrosis in the gills of juvenile Nile tilapia. When water flows in through the gills, the brachial filaments stretch, so that water and pollutants have a direct contact with the lamellas, entering the blood vessels and damaging the other organs, even in low levels (Gerking 1974). The initial damage that occurs to the gills continues to grow during the exposure to mercury (Yuniar 2009). Another factor that can cause damage to the gills, namely hyperplasia, which then develops into hemorrhage and necrosis, is ammonia derived from excretion (Zeitoun et al 2016).

The histopathological observation of the skin showed no significant differences between treatments. HgCl₂ exposure caused damage to the skin in the form of edemas, hyperplasia and necrosis. The skin was damaged by HgCl₂ exposure through the diffusion process. The cells from an organ affected by toxic substances will degenerate and eventually die (Roberts 2012). HgCl₂ enters the skin through pores. HgCl₂ binds to proteins and forms metallothioneins, which are carried by blood and released into the body (Darmono 1995). The blood vessels in the skin are located under the bottom layer of the skin, so that the process of heavy metal absorption through the skin becomes slower and the damage is usually not very severe. Only a few heavy metals that enter through the skin accumulate in the body, mainly because the skin has mechanisms through which it can carry out detoxification and excretion processes. Thus, the influence of toxic properties can still be tolerated where xenobiotics in the body will stimulate physiological resistance to minimize the effects of toxins (Connell & Miller 1984). Similar results are observed in studies conducted by Poleksic et al (2010) in *Acipenser ruthenus* L., suggesting that heavy metals can affect skin histopathology. Samples from *A. ruthenus* showed changes in the epidermal layer, without changes in the dermis and hypodermis layers. Damage of 25% was only found in the outer part of the skin, with severe hemorrhage.

HgCl₂ exposure had the most harming effects in the gills compared to the skin in treatment A, especially in hyperplasia damage. Hyperplasia can cause blood vessels to narrow and blood will accumulate in the constriction area. More blood accumulates in the blood vessels, which will rupture due to not being able to resist the pressure, resulting in hemorrhage (Flores-Lopes & Thomaz 2011). This is presumably due to exposure to heavy metals and because of high levels of salinity resulting in disruption of respiration and osmoregulation. HgCl₂ can result in cell swelling or edema in the gills or excessive accumulation of fluid in the body tissues, characterized by the release of the base membrane and narrowed lacuna cells. These cause the gills to experience deficiencies in function, further causing breathing difficulty. The metabolism is also disrupted (Fitriawan et al 2011). This lack of oxygen results in hypoxia. Fish will stimulate the binding of red blood cells, hematocrit and hemoglobin to increase the mechanism of oxygen transfer in the body (Affonso et al 2002), but in the presence of mercury, the binding process will be disrupted. Previous studies showed a faster mercury uptake in killifish fish (*Fundulus heteroclitus*) under higher salinity. Hg concentrations accumulate more at higher salinities (Dutton & Fisher 2011).

Treatments B and C showed a decreased damage due to the higher salinities. It is suspected that salinity is able to suppress damage caused by HgCl₂ in the gills of Nile tilapia. Decreasing salinity will increase the toxicity of heavy metals (Sullivan 1977). In fresh water and water with low salinity, uncharged hydroxide complexes and chloride ions are formed, while in high salinity, Hg will form a negative complex with chloride ions, where molecules that do not change are more easily delivered to the membrane. Bioavailability from mercury to methyl increases with decreasing salinity levels (Ullrich et al 2001). High salinity causes an increase in chloride ion formation, which results in a decrease in the concentration of heavy metal ions in the waters due to the reaction of

these metal ions with chloride ions (Mance 2012). When compared with treatment B and C, treatment A experienced a decrease in the survival rate of fish in the second week of maintenance. *Clarias bathracus* exposed to mercury for 30 days presented changes in the form of necrosis and degeneration of the gill epithelium, with hyperplasia, hemorrhage and death (Selvanathan et al 2013).

The survival rate of juvenile Nile tilapia in the treatments decreased. The highest survival rate was 80%, in the control aquarium. As for the lowest survival rate, a 0% survival rate was observed in treatment A with a salinity of 0 ppt and mercury chloride.

Conclusions. It can be concluded that exposure to HgCl₂ (0.016 mg L⁻¹) in different salinities had an effect on the histopathology of the gills and skin of juvenile *O. niloticus*, damages appearing in the form of edemas, hyperplasia, hemorrhage and necrosis. The exposure to 0.016 mg L⁻¹ mercury chloride at 0 ppt salinity affected the skin, while gills were damaged in both 0 ppt and 10 ppt salinity. At 20 ppt salinity, the decrease in damage occurs along with the increasing salinity. In general, Hg adsorption decreases significantly when salinity is high. Thus, salinity is able to suppress toxic levels and damage caused by mercury chloride exposure.

Acknowledgements. The authors would like to express their gratitude to all the members of the Faculty of Fisheries and Marine, Universitas Airlangga, Indonesia.

References

- Affonso E. G., Polez V. L. P., Correa C. F., Mazon A. F., Araujo M. R. R., Moraes G., Rantin F. T., 2002 Blood parameters and metabolites in the teleost fish *Colossoma macropomum* exposed to sulfide or hypoxia. *Comparative Biochemistry and Physiology Part C: Toxicology & Pharmacology* 133(3):375-382.
- Connell D. W., Miller G. J., 1984 *Chemistry and ecotoxicology of pollution*. John Wiley & Sons, Hoboken, New Jersey, 464 p.
- Dallinger R., Prosi F., Segner H., Back H., 1987 Contaminated food and uptake of heavy metals by fish: a review and a proposal for further research. *Oecologia* 73:91-98.
- Darmono D., 1995 [Metals in living systems]. UI Press, Jakarta, 140 p. [In Indonesian].
- Dutton J., Fisher N. S., 2011 Salinity effects on the bioavailability of aqueous metals for the estuarine killifish *Fundulus heteroclitus*. *Environmental Toxicology and Chemistry* 30(9):2107-2114.
- Fauziyah Y., 2012 [Obstetrics pathology]. Yogyakarta, Nuha Medika, pp. 17-34. [In Indonesian].
- Fitriawan F., Sutarno, Sunarto, 2011 [Microanatomy changes in gills and kidneys of freshwater shellfish (*Anodonta woodiana*) against cadmium exposure]. *Bioteknologi* 8(1):42-52. [In Indonesian].
- Flores-Lopes F., Thomaz A. T., 2011 Histopathologic alterations observed in fish gills as a tool in environmental monitoring. *Brazilian Journal of Biology* 71(1):179-188.
- Gerking S. D., 1974 *Biological systems* (2nd Edition). W. B. Saunders Co., Philadelphia, 109 p.
- Hardi D., Handayani E., 2015 [Aquatic biota parasites]. Mulawarman University Press, Samarinda, 118 p. [In Indonesian].
- Mahasri G., Saskia A., Apandi P. S., Dewi N. N., Usuman N. M., 2018 Development of an aquaculture system using nanobubble technology for the optimization of dissolved oxygen in culture media for Nile tilapia (*Oreochromis niloticus*). IOP Conference Series: Earth and Environmental Science, IOP Publishing, 12046.
- Mance G., 2012 *Pollution threat of heavy metals in aquatic environments*. Springer Netherlands, Dordrecht, 372 p.
- Modassir Y., 2000 Effect of salinity on the toxicity of mercury in mangrove clam, *Polymesoda erosa* (Lightfoot 1786). *Asian Fisheries Society Metro Manila* 13:335-341.
- Moore J. W., 1990 *Inorganic contaminants of surface water residuals and monitoring priorities*. Springer-Verlag, New York, 334 p.

- Mukti A. T., Dewi E., Satyantini W. H., Sulmartiwi L., Hassan M., 2019 The effect of noni *Morinda citrifolia* L. fruit extracts on the gill histopathological changes of Nile tilapia *Oreochromis niloticus*. IOP Conference Series: Earth and Environmental Science, IOP Publishing, 12093.
- Önning G., Wang Q., Weström B., Asp N. G., Karlsson B., 1996 Influence of oat saponins on intestinal permeability in vitro and in vivo in the rat. *British Journal of Nutrition* 76(1):141-151.
- Pantung N., Helander K. G., Helander H. F., Cheevaporn V., 2008 Histopathological alterations of hybrid walking catfish (*Clarias macrocephalus* x *Clarias gariepinus*) in acute and subacute cadmium exposure. *Environmental Asia* 1:22-27.
- Poleksic V., Lenhardt M., Jaric I., Djordjevic D., Gacic Z., Cvijanovic G., Raskovic B., 2010 Liver, gills, and skin histopathology and heavy metal content of the Danube sterlet (*Acipenser ruthenus* Linnaeus, 1758). *Environmental Toxicology and Chemistry* 29(3):515-521.
- Purnomo T., Muchyiddin, 2007 [Analysis of lead content (Pb) in Bandeng fish (*Chanos chanos* Forsk.) in Tambak, Gresik District]. *Neptunus* 14(1):68-77. [In Indonesian].
- Rahim T., Tuiyo R., 2015 [Effect of different salinity on growth and survival rate of red tilapia (*Oreochromis niloticus*) seed at Gorontalo City Fish Seed Center]. *Jurnal Nike* 3(1):39-43. [In Indonesian].
- Roberts R. J., 2012 *Fish pathology*. John Wiley & Sons, New Jersey, 590 p.
- Sharon G., Zilberg D., 2012 *Atlas of fish histology and histopathology*. Central and Northern Arava Research and Development Centers, 78 p.
- Selvanathan J., Vincent S., Nirmala A., 2013 Histopathology changes in freshwater fish *Clarias batrachus* (Linn.) exposed to mercury and cadmium. *International Journal of Life Sciences and Pharma Research* 3(2):11-21.
- Sericano J. L., Wade T. L., Jackson T. J., Brooks J. M., Tripp B. W., Farrington J. W., Mee L. D., Readmann J. W., Villeneuve J. P., Goldberg E. D., 1995 Trace organic contamination in the Americas: an overview of the US National Status & Trends and the International 'Mussel Watch' programmes. *Marine Pollution Bulletin* 31:214-225.
- Soegianto A., Adhim M. H., Zainuddin A., Putranto T. W. C., Irawan B., 2017 Effect of different salinity on serum osmolality, ion levels and hematological parameters of East Java strain tilapia *Oreochromis niloticus*. *Marine and Freshwater Behaviour and Physiology* 50:105-113.
- Sullivan J. K., 1977 Effects of salinity and temperature on the acute toxicity of cadmium to the estuarine crab *Paragrapsus gaimardii* (Milne Edwards). *Marine and Freshwater Research* 28(6):739-743.
- Ullrich S. M., Tanton T. W., Abdrashitova S. A., 2001 Mercury in the aquatic environment: a review of factors affecting methylation. *Critical Reviews in Environmental Science and Technology* 31(3):241-293.
- Utami N. R., Widiyaningrum P., Iswari R. S., 2018 Histologic structure of red Nile tilapia fish (*Oreochromis niloticus* Var.) gill which is exposed to lead acetate. In: *Journal of Physics: Conference Series* 983, 12181 (IOP Publishing).
- Verma R., Dwivedi P., 2013 Heavy metal water pollution - A case study. *Recent Research in Science and Technology* 5(5):98-99.
- Wang W. X., Wong R. S. K., 2003 Bioaccumulation kinetics and exposure pathways of inorganic mercury and methylmercury in a marine fish, the sweetlips *Plectorhinchus gibbosus*. *Marine Ecology Progress Series* 261:257-268.
- Yuniar V., 2009 [Mercury toxicity (Hg) on survival, growth, blood counts and organ damage in tilapia (*Oreochromis niloticus*)]. Bachelor Thesis, IPB Bogor, 89 p. [In Indonesian].
- Zainuddin A., Putranto T. W. C., Irawan B., Soegianto A., 2017 Effect of sub-lethal lead exposure at different salinities on osmoregulation and hematological changes in tilapia, *Oreochromis niloticus*. *Archive of Polish Fisheries* 25:173-185.
- Zeitoun M. M., EL-Azrak K. E. D. M., Zaki M. A., Nemat-Allah B. R., Mehana E. S. E., 2016 Effects of ammonia toxicity on growth performance, cortisol, glucose and hematological response of Nile Tilapia (*Oreochromis niloticus*). *Aceh Journal of Animal Science* 1(1):21-28.

Received: 31 July 2019. Accepted: 12 August 2019. Published online: 11 June 2020.

Authors:

Firdla Fauziah Ridwan, Department of Marine, Faculty of Fisheries and Marine, Universitas Airlangga, Campus C UNAIR, Jl. Mulyorejo, 60115 Surabaya, Indonesia, e-mail: firdlafauziahridwan@gmail.com

Juni Triastuti, Department of Marine Faculty of Fisheries and Marine, Universitas Airlangga, Campus C UNAIR, Jl. Mulyorejo, 60115 Surabaya, Indonesia, e-mail: triastutijunitri@gmail.com

Akhmad Taufiq Mukti, Department of Marine, Faculty of Fisheries and Marine, Universitas Airlangga, Campus C UNAIR, Jl. Mulyorejo, 60115 Surabaya, Indonesia, e-mail: akhmadtaufiqmukhti@yahoo.com

This is an open-access article distributed under the terms of the Creative Commons Attribution License, which permits unrestricted use, distribution and reproduction in any medium, provided the original author and source are credited.

How to cite this article:

Ridwan F. F., Triastuti J., Mukti A. T., 2020 The effect of mercury chloride in different salinities on the histopathology of juvenile *Oreochromis niloticus*. AACL Bioflux 13(3):1463-1472.