

# Effect of Intravenous Glutamine on Caspase-12 Expression in the Apoptosis of the Glomerular Epithelial Cells of Male Rats Exposed to Cisplatin

*by Tamara Aulia*

---

**Submission date:** 19-Apr-2023 12:09PM (UTC+0800)

**Submission ID:** 2069029362

**File name:** 02.\_Effect\_of\_Intravenous\_Glutamine\_on\_Caspase-12.pdf (409.12K)

**Word count:** 4737

**Character count:** 25696

RESEARCH ARTICLE

Editorial Process: Submission:10/20/2020 Acceptance:02/25/2021

## Effect of Intravenous Glutamine on *Caspase-12* Expression in the Apoptosis of the Glomerular Epithelial Cells of Male Rats Exposed to Cisplatin

Tamara Aulia Fakhrinnisa<sup>1</sup>, Imam Susilo<sup>2\*</sup>, Arifa Mustika<sup>3</sup>, Miyayu Soneta Sofyan<sup>4</sup>

### Abstract

**Objective:** Cisplatin is potent chemotherapy for broad-spectrum malignancies treatment, but its use is limited by organ toxicity effects, including nephrotoxicity. Glutamine prevents cisplatin nephrotoxicity by inhibiting the oxidative stress in kidney cell apoptosis. **Methods:** This research examined the nephroprotective effects of intravenous glutamine on the glomerular epithelium of male rats (*Rattus norvegicus*). 30 male rats were randomly divided into (1) P0 as the control group; (2) P1 that was administered with single dose cisplatin (20 mg/kg BW) intraperitoneal injection; and (3) P2 that was administered with intravenous injection of glutamine (100 mg/kg BW) and single-dose cisplatin (20 mg/kg BW) intraperitoneal injection. The measurement of *caspase-12* expression and apoptotic cells was performed using immunohistochemical methods. **Results:** The *caspase-12* expression are as follows: P0 =  $0.5 \pm 0.15$ ; P1 =  $4.1 \pm 0.86$ ; P2 =  $2.54 \pm 0.72$ . The apoptotic cells are as follows: P0 =  $14.5 \pm 5.23$  cells/field of view; P1 =  $52.7 \pm 17.06$  cells/field of view; P2 =  $31.5 \pm 6.73$  cells/field of view. There is a decrease in the *caspase-12* expression and apoptotic cells after intravenous glutamine administration in male white rats' glomerular epithelial cells exposed to cisplatin. The decrease of *caspase-12* expression is followed by a decrease in glomerular epithelium apoptosis after intravenous glutamine administration. **Conclusion:** Immunohistochemical examination can be used as a marker of the nephrotoxic effect of cisplatin on the renal glomerular epithelium. Glutamine has been observed to give nephroprotective effect to cisplatin nephrotoxic effects.

**Keywords:** Apoptosis- caspase-12- cisplatin- glomerular epithelial cells- glutamine

*Asian Pac J Cancer Prev*, 22 (2), 457-462

### Introduction

The prevalence of metabolic diseases in Indonesia, especially kidney disease, exhibits a high trend. Based on the 2017 data from the Health Insurance Administering Agency (BPJS), the state covered the 3,657,691 recorded cases of chronic kidney disease dialysis procedures with total cost for coverage of IDR 3.1 trillion. One of the etiologies in kidney failure is the permanent damage to the nephrons by toxins.

Cisplatin is a potent chemotherapy drug that is widely used for broad-spectrum therapy for malignancies, including head and neck, esophageal, bladder, testicular, ovarian, breast, and non-small-cell lung cancers (Fillipski et al., 2008; Reck, et al., 2010). However, the clinical application of cisplatin is limited due to the high organ toxicity effects, such as nephrotoxic, neurotoxic, ototoxic,

and hepatotoxic effects (Karasawa, and Steyger, 2015; Guo et al., 2018). Cisplatin causes apoptosis at lower doses (10–100  $\mu$ M) and necrotic cell death at higher doses (200–800  $\mu$ M) (Hanigan and Devarajan, 2003) More than 70% of pediatric patients who received cisplatin experience kidney dysfunction (Skinner et al., 1998). Moreover, acute kidney injury occurs in 20–30% of all administered patients (Miller et al., 2010). The renal dysfunction usually begins a few days after the standard dose of cisplatin (50–120 mg/m<sup>2</sup>) administration and is expressed by the increasing levels of serum creatinine and blood urea nitrogen (Akcaay et al., 2010). Cisplatin treatment induces a massive tubular dilation and cast formation in several tubule lumens. Focal tubular necrosis, base membrane thickening of kidney tubules and Bowman's capsule, and focal mononuclear cell infiltration are occasionally observed as well. Renal tubular damage

<sup>1</sup>Medicine Undergraduate Program, Faculty of Medicine, Airlangga University, Jalan Mayjen Prof. Dr. Moestopo 47, Surabaya, Indonesia. <sup>2</sup>Department of Pathological Anatomy, Faculty of Medicine, Airlangga University, Jalan Mayjen Prof. Dr. Moestopo 47, Surabaya, Indonesia. <sup>3</sup>Department of Pharmacology, Faculty of Medicine, Airlangga University, Jalan Mayjen Prof. Dr. Moestopo 47, Surabaya, Indonesia. <sup>4</sup>Department of Health Faculty of Vocational Study, Airlangga University, Jalan Darmawangsa dalam 68-69 601551 Surabaya, Indonesia. \*For Correspondence: imam-susilo@fk.unair.ac.id

also occurs, together with vacuolization and desquamation of epithelial cells. Some glomeruli experience necrosis and normal residual glomeruli often show the enlarged periglomerular spaces.

One of the cisplatin's nephrotoxic mechanisms is apoptosis, which is a programmed cell death pathway activated by cisplatin through some mechanisms. Cisplatin decreases *Bcl-2* expression in the mitochondrial pathway, which supposedly inhibits the development of the pro-apoptotic molecules (Oltvai and Korsmeyer, 1994). In the death receptor pathways, cisplatin activates Fas-dependent pathways and apoptosis, either in vivo (Nogae *et al.*, 1998) or in vitro (Feldenberg *et al.*, 1999). Cisplatin also activates caspase pathways. The role of caspase-3 is first encountered in the cultured tubular proximal cells, which respond to cisplatin by increasing the caspase-3 activity in a dose-dependent manner (Fukuoka *et al.*, 1998; Lau, 1999). Following studies have revealed caspase-9 activation and, to a lesser extent, caspase-8 activation (Kaushal *et al.*, 2001; Park *et al.*, 2001).

Glutamine (Gln or Q) is an  $\alpha$ -amino acid used in protein biosynthesis. It is one of the ingredients to produce glutathione, which is a potent antioxidant. A single dose of intravenous glutamine (0.15–0.75 g/kg) can increase the *HSP* expression, reduce end-organ injury, and improve the survival rate from septic shock in mice (Wischmeyer, 2002). Glutamine also increased the vascular reactivity by inducing *HSP* expression and inhibiting the release of inflammatory cytokines and peroxide biosynthesis in LPS shock mice (Jing *et al.*, 2017). Glutamine can also reduce apoptosis by inhibiting the oxidative stress, as observed by the results of the trials using mice with colitis induced by a 2,4,6-trinitrobenzene sulfonic acid (Crespo *et al.*, 2012).

The levels of caspase-12 in the glomerular epithelium have not been studied, even though the time of exposure to the toxin received to the glomerulus is high and the epithelial cells are exposed first then the tubules. A study has shown that Bowman's capsules have a role in the physiological function of the normal glomerulus. The podocyte injury stimulates the activation of Bowman's capsule parietal cells, which extend into the glomerular beam, resulting in segmental and global sclerosis by producing more matrixes and destroying the glomerulus capillary's lumen (Al Hussain *et al.*, 2017).

This study aims to analyze the nephroprotective effect of intravenous glutamine on the glomerular epithelial cells apoptosis by examining the expression of *caspase-12*, which is the initiator of apoptosis in the endoplasmic reticulum stress pathway. Pro-caspase-12 is found in the endoplasmic reticulum, especially in the proximal tubules of the kidney. The intravenous glutamine is expected to be an alternative solution for kidney failure caused by cisplatin chemotherapy modalities.

## Materials and Methods

### Animals and Treatment

This research was approved by the Health Research Ethics Committee of the Universitas Airlangga School of Medicine (No. 25/EC/KEPK/FKUA/2020). In this

research, 30 male white rats (*Rattus norvegicus*), aged 2–3 months with a bodyweight of 150–200 grams were obtained from the experimental animal unit of the Faculty of Veterinary Medicine, Universitas Airlangga. Each of them was held separately in a plastic box, lined with husks in the bottom, and then covered with woven wires on top. The husks were replaced every day.

### Chemicals

The glutamine was obtained from Serva (Germany). The glutamine solution was prepared in 0.9% NaCl, with a dose of 1 g of glutamine in 10 mL of 0.9% NaCl. The glutamine dose is injected 100 mg/kg of body weight (BW) and a single injection is made a maximum of 0.2 mL IV. The glutamine was injected intravenously into the rat's tail using a 1 mL 27-gauge syringe.

The cisplatin material was obtained from Kalbe Farma (Indonesia), with a dose of 20 mg/kg BW, administered via intraperitoneal injection using a 1 mL 27-gauge syringe. We also used Primary Antibodies Caspase-12 (Polyclonal Antibody PA5-27094 Thermo Scientific) and Apoptosis Detection Kit in Situ Cell POD (11684817910 ROCHE).

### Experimental Design

In this research, 30 Wistar male white rats were randomly divided into three groups at the start of the study. The control group (P0) was sacrificed by cervical dislocation after anesthesia with ether and then the kidneys were taken for immunohistochemistry preparation.

On day 7, the P1 group was administered with cisplatin at a single dose of 20 mg/kg BW via intraperitoneal injection and then observed for 72 h. The rats were sacrificed on the 10th day by cervical dislocation after anesthesia with ether, and then the kidneys were taken for the immunohistochemistry preparation. The execution time is due to the glomerular epithelial cells' apoptosis is occurred after cisplatin injection on day 10 (Tsuruya *et al.*, 2003). The P2 group was administered with glutamine at a dose of 100 mg/kg BW once daily via intravenous injection from day 1 to day 7 (Zhang *et al.*, 2009). On day 7, the rats were administered with cisplatin at a single dose of 20 mg/kg BW via intraperitoneal injection. Subsequently, the rats were observed for 72 h and then sacrificed on the 10th day through cervical dislocation after anesthesia with ether. Later, the kidneys were taken as well for the immunohistochemistry preparation.

### Histopathological Preparation

The kidney tissue was fixed in 10% formalin for 15–24 h. The dehydration was performed for 60 minutes using the series of alcohol (30%, 50%, 70%, 80%, 96%, and absolute concentration) to prevent any changes in tissue morphology. Then, the clearing using xylol was performed twice (60 min each). Subsequently, the infiltration with tender paraffin was performed for 60 min at 48°C. Later, the hard paraffin was blocked in the mold and stored for 1 day. The next day, the hardened was placed on the holder and cut into 4–5- $\mu$ m-thick sections using a rotary microtome. After that, the mounting to object glass was performed with the poly-L-lysine coating. The mounted tissue was immersed in xylol twice (5 min each). After

that, the rehydration was performed using the series of alcohol (absolute, 96%, 80%, 70%, 50%, and 30% concentration) for 5 min, respectively. Then, it was rinsed in dH<sub>2</sub>O for 5 min.

#### Immunohistochemical Assay of *CSP12*

The slides were washed once with phosphate-buffered saline (PBS) (Millipore 524650) at pH 7.4 for 5 min three times. The endogenous peroxide blocking was carried using 3% H<sub>2</sub>O<sub>2</sub> for 20 min. Then the slides were washed again with the same procedure before the blocking treatment. The unspecific protein blocking was done using 5% PBS (Millipore 524650) containing 0.25% Triton X-100 (Sigma-Aldrich T8787) and then repeat the washing procedure. The incubation of primary antibodies caspase-12 (Polyclonal Antibody PA5-27094 Thermo Scientific) was done overnight at 40°C. After that, the slides were washed using PBS (Millipore 524650), pH 7.4, three times for 5 min each. The incubation using anti-mouse biotin-conjugated was done for 1 h at room temperature then the wash procedure was repeated. The incubation using streptavidin-horse radish peroxidase (Thermo Fisher Scientific N100) was done for 40 min and then washed once more. The slides were then added with drops with diaminobenzidine (DAB) (Thermo Fisher Scientific 3400) and incubated for 10 min and then washed with a similar procedure. The counterstaining was using Mayer's hematoxylin solution (Sigma-Aldrich MHS32) for 10 min, then washed using tap water, rinsed with dH<sub>2</sub>O, and air-dried. The prepared slides were observed using a light microscope at a magnification of 400× after mounted and covered with a glass cover. The positive molecular expression with primary antibodies would appear brown when observed. The calculated glomerular epithelial cells were located in the renal corpuscle area marked by a flat layer of epithelial cells at the parietal part of Bowman's space.

#### Apoptosis Examination

Tissue deparaffinization was performed by washing the tissue three times with xylene (Supelco 108297) for 5 min. The tissue was soaked twice in absolute ethanol for 5 min each and then transferred to 95% ethanol and 70% ethanol 3 min each. The tissue was washed with PBS (Millipore 524650) for 5 min.

The antigen uptake was done by giving proteinase K (Sigma-Aldrich 70663) for 15 min to the sample. Then, the tissue was washed twice with H<sub>2</sub>O in a Coplin tube for 2 min. The endogenous peroxidase was removed by dripping 3% H<sub>2</sub>O<sub>2</sub> PBS and left for 5 min at room temperature. Then, the tissue was washed twice with PBS (Millipore 524650) for 2 min each in a Coplin tube. The excess liquid was dried using paper. About 75 µl of equilibration buffer was dropped on the tissue and then incubated for 10 min at room temperature. The liquid around the tissue was then dried using paper. The enzyme activity was reduced by 55 µl/5 cm in the tissue of TdT (Sigma-Aldrich SAB5600268), and then the tissue was incubated at 37°C in a moist container for 1 h. The preparations were placed in a Coplin jar containing a strong buffer/cleaning job and then incubated for 10

min at room temperature. The preparations were washed four times with PBS (Millipore 524650) for 2 min in a Coplin jar at room temperature. The excess liquid around the tissue was dried using paper. Anti-digoxigenin (Roche 11333089001) conjugate, which was previously removed from storage and warmed to room temperature, was dropped on a tissue surface of 65 µl/5 cm<sup>2</sup> and then incubated for 30 min at room temperature. The preparation was washed four times with PBS (Millipore 524650) in a Coplin jar for 2 min at room temperature. Then, the excess liquid around the tissue was dried using paper. The color was exposed after peroxidase substrate (Sigma-Aldrich CPS160) drops of 75 µl/5cm<sup>2</sup> on the surface of the tissue and left for 10 min at room temperature. The preparations were washed three times with dH<sub>2</sub>O for 1 min in Coplin jars and then incubated with dH<sub>2</sub>O in Coplin jars for 5 min at room temperature. The methyl green counterstaining (Sigma-Aldrich M8884) was performed for 30 s at room temperature. Then, the preparation was washed three times with dH<sub>2</sub>O for 1 min in a Coplin jar. The preparations were cleaned with xylene (Supelco 108297), and the excess liquid around the tissue was dried using paper. The preparations were observed using a light microscope at a magnification of 400× and the brown epithelial cells from the glomerular kidney epithelium were counted in each field of view.

#### Statistical Analysis

The ratio was the used data scale for caspase-12 expressing cells and apoptotic cells, so it was necessary to conduct a normality test using the Shapiro-Wilk test ( $\alpha = 0.05$ ) and homogeneity test using the Leaven test ( $\alpha = 0.05$ ). If the results were in the normal distribution and homogeneous, then a different test using one-way ANOVA ( $\alpha = 0.05$ ) was conducted. If the results were normal but heterogeneous, then the conducted test was Kruskal-Wallis ( $\alpha = 0.05$ ). If there was a difference in data obtained, then the analysis was followed by Mann-Whitney U test ( $\alpha = 0.05$ ). Eventually, Pearson's correlation test was conducted to find out the correlation between caspase-12 expressing cells and apoptotic cells.

## Results

#### Glomerular Epithelial Cells Morphology

Before observing the caspase-12 expressing cells and apoptotic cells, the morphology of Bowman's capsule renal epithelium was first observed with hematoxylin-eosin (HE) staining at a 400× magnification. The observed object was chosen randomly to represent the histological picture of each group. The cisplatin was occasionally found in focal tubular necrosis, the thickening of the base membrane in the kidney tubules and Bowman's capsules, and the infiltration of focal mononuclear cells in the glomerulus. Some glomeruli experience necrosis and normal residual glomeruli often exhibit enlarged periglomerular spaces.

#### Caspase-12 Protein Expression and Apoptotic Cells in the Glomerular Epithelial Cells

The results of immunohistochemical-stained kidney  
*Asian Pacific Journal of Cancer Prevention, Vol 22* 459

Table 1. The Descriptive Statistic of Caspase-12 Expression and Apoptotic Cells. P0: control group. P1: cisplatin injection on the 7<sup>th</sup> day. P2 treated with intravenous glutamine injection 7 days in a row before being injected with cisplatin on the 7<sup>th</sup> day.

Group	Cells expressing the caspase-12 protein Mean ± SD	Apoptotic cells Mean ± SD
P0	0.5 ± 0.15	14.5 ± 5.23
P1	4.1 ± 0.86	52.7 ± 17.06
P2	2.54 ± 0.72	31.5 ± 6.73

tissue exhibited changes in the expression of *caspase-12* in each group. The administration of cisplatin injection in group P1 exhibited a higher mean expression of *caspase-12* after 72 h (4.1 ± 0.86) when compared with the control group (P0). The administration of glutamine injection and cisplatin injection (P2) exhibited a lower mean expression of *caspase-12* after 72 h (2.54 ± 0.72) when compared with P1 (Table 1).

Besides, cisplatin injection in group P1 exhibited a higher rate of cell apoptosis after 72 h (52.7 ± 17.06) when compared with the control group (P0). The administration of glutamine injection and cisplatin injection in P2 exhibited a lower mean expression of *caspase-12* after 72 h (31.5 ± 6.73) when compared with P1 (Table 1).

The Kruskal–Wallis test indicated the differences in the number of glomerular epithelial cells expressing caspase-12 and in the number of apoptotic cells in the three treatment groups. Subsequently, the Mann–Whitney U test concluded that there were differences in the number of parietal epithelial cells expressing caspase-12 protein and in the number of apoptotic cells between the P1 and P2 groups with the control group and between the P1 and P2 groups. There were also differences in the number of parietal epithelial cells expressing the caspase-12 protein

38 Table 2. Mann–Whitney U Test Results

Variable	Comparison	P-value	Interpretation
Cells expressing the caspase-12	P0 P1	0	Obtained difference
	P2	0	
	P1 P2	0.001	
Apoptotic cells	P0 P1	0	Obtained difference
	P2	0	
	P1 P2	0.001	

and the number of cell apoptosis (Table 2).

*The Correlation Between Caspase-12 Expression Cells and Apoptotic Cells*

The Pearson’s correlation test results indicated that a significant correlation exists between the glomerular epithelial cells expressing caspase-12 and the number of cells undergoing apoptosis with the correlation coefficient of 0.707, which is strong and positive. Thus, it can be concluded that if the number of protein expression cells decreases, the number of apoptotic cells also decreases, and vice versa.

**Discussion**

In this study, the treatment was performed in the experimental animals that were divided into three groups: the control group (P0); the P1 group, which received intraperitoneal cisplatin injection; and the P2 group, which received intraperitoneal cisplatin injection and intravenous glutamine injection. The treatment response was observed for 72 h after treatment because apoptosis was apparent after 72 h of cisplatin injection (Tsuruya et al., 2003). The site observed in this study was the

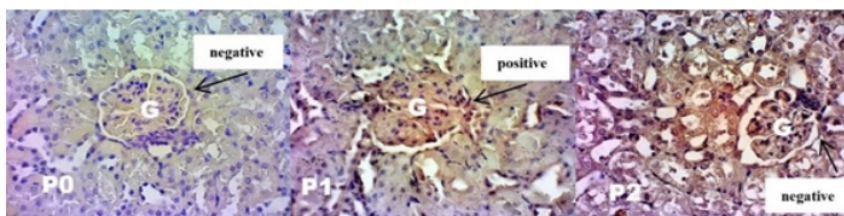


Figure 1. Glomerular Epithelial Cells Morphology after CSP-12 Antibody. P0: control group. P1: cisplatin injection on the 7<sup>th</sup> day. P2 treated with intravenous glutamine injection for 7 days in a row before being injected with cisplatin on the 7<sup>th</sup> day. The positive result indicated with brown cytoplasm.

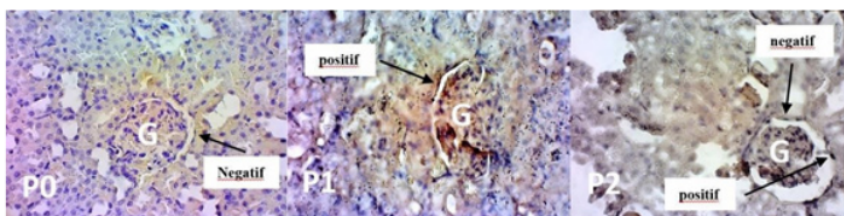


Figure 2. Morphology of the Glomerular Epithelial Cells after Apoptosis Detection Kit. P0: control group. P1: cisplatin injection on the 7<sup>th</sup> day. P2 treated with intravenous glutamine injection for 7 days in a row before being injected with cisplatin on the 7<sup>th</sup> day. The positive result indicated with brown cytoplasm.

glomerular epithelium. So far, there has been no research yet on the cisplatin nephrotoxicity in the glomerular epithelium. The glomerulus is more proximal than the tubules and therefore is thought to be affected by cisplatin nephrotoxicity earlier than the tubules.

The differences in the *caspase-12* expression level were directly proportional to the level of glutamine administration in each treatment. These results are supporting by a study that stated that glutamine can induce high levels of *HSP* expression in all organs, including the kidneys (Zhang et al., 2009) A single dose of intravenous glutamine can increase the *HSP* expression, reduce end-organ injury, and improve survival from septic shock in whole mice (Wischmeyer, 2002). The cytoprotective and antioxidant properties of glutamine may be crucial in high catabolism situations, where the activity and expression of inflammatory pathways mediated by *NF-κB* are modulated (Cruzat et al., 2014). The decreased availability of plasma glutamine has been reported to cause the reduction of lymphocyte proliferation, impair the expression of surface activation proteins and cytokine production, and induce apoptosis in cells (Roth, 2008). This is what might be the reason glutamine can prevent the cells toward apoptosis in this study.

As mentioned in the results, glutamine administration decreased apoptosis of cisplatin-treated cells. This has been proven to the contrary in a study by Kadri et al. (2017) where the suppression of glutamine metabolism can increase the cytotoxic potential of some therapeutic drugs, such as cisplatin, thus allowing a decrease of chemotherapy compounds dose to minimize the toxicity and adverse reactions.

The mechanisms of cell death depend on the cisplatin administration dose, either by necrosis or apoptosis (Lieberthal et al., 1996). In *in vitro* experiments, low concentrations of cisplatin cause cells to undergo apoptosis, while necrosis at high concentrations (Megyesi et al., 1998; Ramesh and Reeves, 2003). In this research, the dose was enough to cause the epithelial cells to undergo apoptosis.

In the present study, cisplatin injection in the P1 exhibited a higher rate of cell apoptosis after 72 h compared to the control (P0). We also found that glutamine and cisplatin injection in the P2 expressed lower *caspase-12* expression after 72 h compared to P1. Apoptosis after cisplatin treatment can also involve the ER-stress pathway. The caspase initiator in the ER pathway is caspase-12, which is localized to the cytosolic face of the ER and activated by ER pressure (Boyce and Yuan, 2006). Caspase-12 is activated during the treatment of cisplatin in LLC-PK1 cells (Liu and Baliga, 2005). *In vitro* observations have recently been extended to mouse models of cisplatin nephrotoxicity, where ER stresses and associated signaling, such as cleavage of caspase-12, were observed (Peyrou et al., 2007).

It can be concluded that apoptosis due to cisplatin administration occurs due to the increased expression of *caspase-12*, which induces apoptosis in the renal glomerular epithelial cells. At 72 h of observation after intravenous glutamine administration, the incidence of apoptosis in the renal glomerular epithelial cells was

significantly inhibited ( $p < 0.0001$ ) between the groups and was directly proportional to the effect of glutamine, which inhibited the expression of *caspase-12*.

In conclusion, based on the results, there is a decrease in the expression of *caspase-12* and apoptotic cells in the glomerular epithelial cells of male white rats exposed to cisplatin after intravenous glutamine administration. The decreased expression of *caspase-12* in intravenous glutamine administration is followed by a decrease in apoptosis in the glomerular epithelium. Thus, it is assumed that immunohistochemical examination on the renal glomerular epithelium can be used as a marker for the nephrotoxic effect of cisplatin.

The limitation of this study is various variables have not been observed. The researcher did not make observations to the executor caspase (*caspase-3*) because the researcher wanted to see the significance if the treatment was carried out in the initiator caspase. This study also did not see the incidence of apoptosis through two or more routes. In this case, the researcher wants to try to go through one route first and there is no need to study more than one route if the results are significant. It is also suggested to do further research on the application of glutamine intravenous to humans receiving cisplatin chemotherapy and also on the treatment in the animal with cancer so the effect of glutamine in cancer group and non-cancer can be observed.

## References

- Akcaay A, Turkmen K, Lee D, Edelstein CL (2010). Update on the diagnosis and management of acute kidney injury. *Int J Nephrol Renovasc Dis*, **3**, 129-40
- Al Hussain T, Al Mana H, Hussein M, Akhtar M (2017). Podocyte and parietal epithelial cell interactions in health and disease. *Adv Anat pathol*, **24**, 24-34.
- Boyce M, Yuan J (2006). Cellular response to endoplasmic reticulum stress: a matter of life or death. *Cell Death Differ*, **13**, 363-73
- Crespo I, San-Miguel B, Prause C, et al (2012). Glutamine treatment attenuates endoplasmic reticulum stress and apoptosis in TNBS-induced colitis. *PLoS One*, **7**, 50407
- Cruzat VF, Bittencourt A, Scorzazon SP, et al (2014). Oral free and dipeptide forms of glutamine supplementation attenuate oxidative stress and inflammation induced by endotoxemia. *Nutrition*, **30**, 602-11
- Feldenberg LR, Thevananther S, Del Rio M, De Leon M, Devarajan P (1999). Partial ATP depletion induces Fas- and caspase-mediated apoptosis in MDCK cells. *Am J Physiol (Renal Physiol)*, **276**, 837-46.
- Fillipski KK, Loos WJ, Verweij J, Sparreboom A (2008). Interaction of cisplatin with the human organic cation transporter 2. *Clin Cancer Res*, **15**, 3875- 80
- Fukuoka K, Takeda M, Kobayashi M, et al (1998). Distinct interleukin-1 $\beta$ -converting enzyme family proteases mediate cisplatin- and staurosporine-induced apoptosis of mouse proximal tubule cells. *Life Sci*, **62**, 1125-38.
- Guo Y, Wang M, Mou J, et al (2018). Pretreatment of huaiqihuang extractum protects against cisplatin-induced nephrotoxicity. *Sci Rep*, **8**, 7333
- Hanigan MH, Devarajan P (2003). Cisplatin nephrotoxicity: Molecular mechanisms. *Cancer Ther*, **1**, 47-61
- Jing L, Wu Q, Wang F (2017). Glutamine induces heat-shock protein and protects against *Escherichia coli*

- lipopolysaccharide-induced vascular hyporeactivity in rats. *Crit Care*, **11**, R34
- Kadri V, Lian C, Björn K, et al (2017). Contrasting effects of glutamine deprivation on apoptosis induced by conventionally used anticancer drugs, *biochimica et biophysica acta (BBA). Mol Cell Res*, **1864**, 498-506
- Karasawa T, Steyger PS (2015). An integrated view of cisplatin-induced nephrotoxicity and ototoxicity. *Toxico Lett*, **237**, 219-27.
- Kaushal GP, Kaushal V, Hong X, Shah SV (2001). Role and regulation of caspases in cisplatin-induced injury to renal tubular epithelial cells. *Kidney Int*, **60**, 1726-36
- Lau AH (1999). Apoptosis induced by cisplatin nephrotoxic injury. *Kidney Int*, **56**, 1295-8.
- Lieberthal W, Triaca V, Levine J (1996). Mechanisms of death induced by cisplatin in proximal tubular epithelial cells: apoptosis vs. necrosis. *Am J Physiol*, **270**, 700-8.
- Liu H, Baliga R (2005). Endoplasmic reticulum stress-associated caspase 12 mediates cisplatin-induced LLC-PK1 cell apoptosis. *J Am Soc Nephrol*, **16**, 1985- 92.
- Megyesi J, Safirstein RL, Price PM (1998). Induction of p21WAF1/CIP1/SDI1 in kidney tubule cells affects the course of cisplatin-induced acute renal failure. *J Clin Invest*, **101**, 777-82.
- Miller R, Tadagavadi R, Ramesh G, Reeves W (2010). Mechanisms of cisplatin nephrotoxicity. *Toxins (Basel)*, **2**, 2490-2518.
- Nogae S, Masanobu M, Kobayashi N, et al (1998). Induction of apoptosis in ischemia-reperfusion model of mouse kidney: Possible involvement of Fas. *J Am Soc Nephrol*, **9**, 620-31.
- Oltvai Z, Korsmeyer S (1994). Checkpoints of dueling dimers foil death wishes. *Cell*, **79**, 189-92.
- Park MS, De Leon M, Devarajan P (2002). Cisplatin induces apoptosis in LLC-PK1 cells via activation of mitochondrial pathways. *J Am Soc Nephrol*, **13**, 858-65.
- Peyrou M, Hanna PE, Cribb AE (2007). Cisplatin, gentamicin, and P- aminophenol induce markers of endoplasmic reticulum stress in the rat kidneys. *Toxicol Sci*, **99**, 346-53.
- Ramesh G, Reeves WB (2003). TNFR2-mediated apoptosis and necrosis in cisplatin-induced acute renal failure. *Am J Physiol Renal Physiol*, **285**, 610-8
- Reck M, Von P, Zatloukal P, et al (2010). Overall survival with cisplatin-gemcitabine and bevacizumab or placebo as first-line therapy for nonsquamous non-small-cell lung cancer: Results from a randomised phase III trial (AVAiL). *Ann Oncol*, **21**, 1804-9
- Roth E (2008). Nonnutritive effects of glutamine. *J Nutr*, **138**, 2025-31.
- Skinner R, Pearson AD, English MW, et al (1998). Cisplatin dose rate as a risk factor for nephrotoxicity in children. *CraftAW Br J Cancer*, **77**, 1677-82.
- Tsuruya K, Ninomiya T, Tokumoto M (2003). Direct involvement of the receptor-mediated apoptotic pathways in cisplatin-induced renal tubular cell death. *Kidney Int*, **63**, 72-82
- Wischmeyer P (2002). Glutamine and heat shock protein expression. *Nutrition*, **18**, 225-8.
- Zhang Y, Zou Z, Li YK, Yuan HB, Shi XY (2009). Glutamine-induced heat shock protein protects against renal ischaemia reperfusion injury in rats. *J Comp Asia Pacific Soc Nephrol*, **14**, 573-80.



This work is licensed under a Creative Commons Attribution-Non Commercial 4.0 International License.

# Effect of Intravenous Glutamine on Caspase-12 Expression in the Apoptosis of the Glomerular Epithelial Cells of Male Rats Exposed to Cisplatin

## ORIGINALITY REPORT

19%

SIMILARITY INDEX

14%

INTERNET SOURCES

14%

PUBLICATIONS

2%

STUDENT PAPERS

## PRIMARY SOURCES

- 1** Yeter Topcu Tarladacalisir, Mehmet Kanter, Muberra Uygun. "Protective Effects of Vitamin C on Cisplatin-Induced Renal Damage: A Light and Electron Microscopic Study", Renal Failure, 2009  
Publication 1%
- 2** [issuu.com](http://issuu.com)  
Internet Source 1%
- 3** [www.mdpi.com](http://www.mdpi.com)  
Internet Source 1%
- 4** Ika Nindya Kadariswantiningsih, Mochammad Thaha, Cahyo Wibisono Nugroho, Berliana Hamidah et al. "Could Complete Blood Count Parameters and Non-fasting Cholesterol Profile Describe Inflammation and Oxidative Stress in Chronic Kidney Disease?", The Indonesian Biomedical Journal, 2018  
Publication 1%



5	Internet Source	1 %
6	<a href="http://big5.39kf.com">big5.39kf.com</a> Internet Source	1 %
7	<a href="http://discovery.dundee.ac.uk">discovery.dundee.ac.uk</a> Internet Source	1 %
8	Jane Bayani, Jeremy A. Squire. " Fluorescence In Situ Hybridization ( ) ", Current Protocols in Cell Biology, 2004 Publication	1 %
9	<a href="http://japer.in">japer.in</a> Internet Source	1 %
10	<a href="http://coek.info">coek.info</a> Internet Source	1 %
11	Fitriyani Fitriyani, Kurniasari Kurniasari. "CUKA APEL MENURUNKAN BERAT BADAN TIKUS DENGAN OBESITAS", Jurnal Biomedika dan Kesehatan, 2022 Publication	<1 %
12	Farida Fitriana, Woro Setia Ningtyas, Erni Rosita Dewi. "Providing mental healthcare for postpartum women in Indonesia: a qualitative phenomenological study", British Journal of Midwifery, 2022 Publication	<1 %
13	<a href="http://www.peertechz.com">www.peertechz.com</a>	

Internet Source

<1 %

14

[www.tandfonline.com](http://www.tandfonline.com)

Internet Source

<1 %

15

[www.frontiersin.org](http://www.frontiersin.org)

Internet Source

<1 %

16

[iopscience.iop.org](http://iopscience.iop.org)

Internet Source

<1 %

17

Alvo Orlando Vizzotto Junior, Lucia de Noronha, Darliany Louise H. Scheffel, Antonio Carlos L. Campos. "Influência da cisplatina administrada no pré e no pós-operatório sobre a cicatrização de anastomoses colônicas em ratos", *Jornal Brasileiro de Patologia e Medicina Laboratorial*, 2003

Publication

<1 %

18

Submitted to University of Sunderland

Student Paper

<1 %

19

Shumin Zhang, Lianzhen Wang, Yuting Gao, Yanxia Fan, Gang Zhang, Yujie Zhang. "Molecular Mechanism of 73HOXC-AS1-Activated Wnt $\beta$ -Catenin Signaling and eIF4AIII in Promoting Progression of Gastric Cancer", *BioMed Research International*, 2021

Publication

<1 %

20

[e-journal.unair.ac.id](http://e-journal.unair.ac.id)

Internet Source

<1 %

21

Submitted to Yeditepe University

Student Paper

<1 %

22

[cancerbiomedcentral.com](http://cancerbiomedcentral.com)

Internet Source

<1 %

23

[erc.bioscientifica.com](http://erc.bioscientifica.com)

Internet Source

<1 %

24

[link.springer.com](http://link.springer.com)

Internet Source

<1 %

25

G P Kaushal. "Transcriptional activation of caspase-6 and -7 genes by cisplatin-induced p53 and its functional significance in cisplatin nephrotoxicity", *Cell Death and Differentiation*, 03/2008

Publication

<1 %

26

Miyagi, Mariana Yasue Saito, Marilia Seelaender, Angela Castoldi, Danilo Candido de Almeida, Aline Villa Nova Bacurau, Vinicius Andrade-Oliveira, Lucas Maceratesi Enju, Marcus Pisciotano, Caroline Yuri Hayashida, Meire Ioshie Hiyane, Patricia Chakur Brum, Niels Olsen Saraiva Camara, and Mariane Tami Amano. "Long-Term Aerobic Exercise Protects against Cisplatin-Induced

<1 %

# Nephrotoxicity by Modulating the Expression of IL-6 and HO-1", PLoS ONE, 2014.

Publication

27

Paul E Wischmeyer. "Glutamine: role in critical illness and ongoing clinical trials", Current Opinion in Gastroenterology, 03/2008

Publication

<1 %

28

Z Dong. "Regulation of PUMA- $\alpha$  by p53 in cisplatin-induced renal cell apoptosis", Oncogene, 07/06/2006

Publication

<1 %

29

[ajprenal.physiology.org](http://ajprenal.physiology.org)

Internet Source

<1 %

30

[dr.ntu.edu.sg](http://dr.ntu.edu.sg)

Internet Source

<1 %

31

[worldwidescience.org](http://worldwidescience.org)

Internet Source

<1 %

32

Mishima, K.. "Protective effect of cyclic AMP against cisplatin-induced nephrotoxicity", Free Radical Biology and Medicine, 20060501

Publication

<1 %

33

Nagla A. El-Sherbeeney, Ghalia M. Attia. "The protective effect of trimetazidine against cisplatin-induced nephrotoxicity in rats", Canadian Journal of Physiology and Pharmacology, 2016

Publication

<1 %

34

Rishi Bhardwaj, Ankita Bhardwaj, Devinder K. Dhawan, Chanderdeep Tandon, Tanzeer Kaur. "4-PBA rescues hyperoxaluria induced nephrolithiasis by modulating urinary glycoproteins: Cross talk between endoplasmic reticulum, calcium homeostasis and mitochondria", Life Sciences, 2022

Publication

&lt;1 %

35

Zoja, C., P. Bautista Garcia, C. Rota, S. Conti, E. Gagliardini, D. Corna, C. Zanchi, P. Bigini, A. Benigni, G. Remuzzi, and M. Morigi. "MESENCHYMAL STEM CELL THERAPY PROMOTES RENAL REPAIR BY LIMITING GLOMERULAR PODOCYTE AND PROGENITOR CELL DYSFUNCTION IN ADRIAMYCIN-INDUCED NEPHROPATHY", AJP Renal Physiology, 2012.

Publication

&lt;1 %

36

[bioone.org](http://bioone.org)

Internet Source

&lt;1 %

37

[era.ed.ac.uk](http://era.ed.ac.uk)

Internet Source

&lt;1 %

38

[mafiadoc.com](http://mafiadoc.com)

Internet Source

&lt;1 %

39

[pure.rug.nl](http://pure.rug.nl)

Internet Source

&lt;1 %

40

[rucore.libraries.rutgers.edu](http://rucore.libraries.rutgers.edu)

Internet Source

<1 %

41

[tjnpr.org](http://tjnpr.org)

Internet Source

<1 %

42

[unsworks.unsw.edu.au](http://unsworks.unsw.edu.au)

Internet Source

<1 %

43

[www.codecollector.net](http://www.codecollector.net)

Internet Source

<1 %

44

[www.jneurosci.org](http://www.jneurosci.org)

Internet Source

<1 %

45

[www.promega.com](http://www.promega.com)

Internet Source

<1 %

46

[www.spandidos-publications.com](http://www.spandidos-publications.com)

Internet Source

<1 %

47

Submitted to Universitas Indonesia

Student Paper

<1 %

48

Vinicius Cruzat, Marcelo Macedo Rogero, Kevin Noel Keane, Rui Curi, Philip Newsholme.

"Glutamine: Metabolism and Immune Function, Supplementation and Clinical Translation", *Nutrients*, 2018

Publication

<1 %

49

[hdl.handle.net](http://hdl.handle.net)

Internet Source

<1 %

50

Andreas Linkermann, Guochun Chen, Guie Dong, Ulrich Kunzendorf, Stefan Krautwald, Zheng Dong. "Regulated Cell Death in AKI", Journal of the American Society of Nephrology, 2014

Publication

<1 %

51

H. Servais. "Renal cell apoptosis induced by nephrotoxic drugs: cellular and molecular mechanisms and potential approaches to modulation", APOPTOSIS, 01/2008

Publication

<1 %

52

Miller, Ronald P., Raghu K. Tadagavadi, Ganesan Ramesh, and William Brian Reeves. "Mechanisms of Cisplatin Nephrotoxicity", Toxins, 2010.

Publication

<1 %

Exclude quotes Off

Exclude matches Off

Exclude bibliography On

# Effect of Intravenous Glutamine on Caspase-12 Expression in the Apoptosis of the Glomerular Epithelial Cells of Male Rats Exposed to Cisplatin

---

GRADEMARK REPORT

---

FINAL GRADE

**/100**

GENERAL COMMENTS

**Instructor**

---

PAGE 1

---

PAGE 2

---

PAGE 3

---

PAGE 4

---

PAGE 5

---

PAGE 6

---