

# A novel method of sampling gingival crevicular fluid from a mouse model of periodontitis

*by Irma Josefina Savitri*

---

**Submission date:** 11-Apr-2023 10:46AM (UTC+0800)

**Submission ID:** 2061150862

**File name:** ingival\_crevicular\_fluid\_from\_a\_mouse\_model\_of\_periodontitis.pdf (620.85K)

**Word count:** 4253

**Character count:** 22546



Research paper

## A novel method of sampling gingival crevicular fluid from a mouse model of periodontitis



Shinji Matsuda<sup>a,b,1</sup>, Alexandru Movila<sup>a,1</sup>, Maiko Suzuki<sup>a,c</sup>, Mikihito Kajiya<sup>a,b</sup>, Wichaya Wisitrasameewong<sup>a,d,e</sup>, Rayyan Kayal<sup>f</sup>, Josefine Hirshfeld<sup>a,g</sup>, Ayman Al-dharrab<sup>f</sup>, Irma J. Savitri<sup>a,h</sup>, Abdulghani Mira<sup>f</sup>, Hidemi Kurihara<sup>b</sup>, Martin A. Taubman<sup>a</sup>, Toshihisa Kawai<sup>a,d,\*</sup>

<sup>a</sup> The Forsyth Institute, Department of Immunology and Infectious Diseases, Cambridge, MA, USA

<sup>b</sup> Department of Periodontology, Hiroshima University Faculty of Dentistry, Hiroshima, Japan

<sup>c</sup> College of Dentistry, The Ohio State University, Columbus, OH, USA

<sup>d</sup> Department of Oral Medicine, Infection and Immunity, Harvard School of Dental Medicine, Harvard University, Boston, MA, USA

<sup>e</sup> Department of Periodontology, Faculty of Dentistry, Chulalongkorn University, Bangkok, Thailand

<sup>f</sup> King Abdulaziz University, Faculty of Dentistry, Jeddah, Saudi Arabia

<sup>g</sup> Department of Restorative Dentistry, University of Birmingham, Birmingham, UK

<sup>h</sup> Universitas Airlangga, Faculty of Dental Medicine, Department of Periodontology, Jawa Timur, Indonesia

### ARTICLE INFO

#### Article history:

Received 10 July 2016

Received in revised form 23 August 2016

Accepted 29 August 2016

Available online 30 August 2016

#### Keywords:

Periodontal disease

Gingival crevicular fluid

Ligature-induced periodontal disease

Mice

### ABSTRACT

Using a mouse model of silk ligature-induced periodontal disease (PD), we report a novel method of sampling mouse gingival crevicular fluid (GCF) to evaluate the time-dependent secretion patterns of bone resorption-related cytokines. GCF is a serum transudate containing host-derived biomarkers which can represent cellular response in the periodontium. As such, human clinical evaluations of PD status rely on sampling this critical secretion. At the same time, a method of sampling GCF from mice is absent, hindering the translational value of mouse models of PD. Therefore, we herein report a novel method of sampling GCF from a mouse model of periodontitis, involving a series of easy steps. First, the original ligature used for induction of PD was removed, and a fresh ligature for sampling GCF was placed in the gingival crevice for 10 min. Immediately afterwards, the volume of GCF collected in the sampling ligature was measured using a high precision weighing balance. The sampling ligature containing GCF was then immersed in a solution of PBS-Tween 20 and subjected to ELISA. This enabled us to monitor the volume of GCF and detect time-dependent changes in the expression of such cytokines as IL-1 $\beta$ , TNF- $\alpha$ , IL-6, RANKL, and OPG associated with the levels of alveolar bone loss, as reflected in GCF collected from a mouse model of PD. Therefore, this novel GCF sampling method can be used to measure various cytokines in GCF relative to the dynamic changes in periodontal bone loss induced in a mouse model of PD.

© 2016 Published by Elsevier B.V.

### 1. Introduction

Periodontal diseases (PD) are inflammatory bone lytic diseases caused by polymicrobial infection, indicating that several opportunistic pathogens act on host cells to produce inflammatory cytokines and enzymes that destroy periodontal soft tissue and alveolar bone (Taubman and Kawai, 2001). Importantly, host-destructive inflammatory biomarkers can be monitored in gingival crevicular fluid (GCF) in a non-invasive manner (Giannobile, 1997; Champagne et al., 2003; Armitage, 2004). Among a variety of host biomarkers in GCF thus far assessed (Loos, 2005), interleukin (IL)-1 $\beta$ , IL-6, and TNF- $\alpha$  appear to be signature

biomarkers that reflect the level inflammation in the periodontal lesion (Buduneli and Kinane, 2011). In addition to these proinflammatory cytokines, it was previously demonstrated that an osteoclastogenic cytokine, receptor activator of NF- $\kappa$ B ligand (RANKL), is produced by activated adaptive immune cells in the bone resorption lesion of PD (Kawai et al., 2006). Since osteoclastogenic activity of RANKL is counter-regulated by its soluble decoy receptor osteoprotegerin (OPG) (Kajiya et al., 2010), measurement of RANKL/OPG ratio in GCF can indicate the activity of osteoclast precursors involved in pathological bone resorption.

It is well known that animal studies complement *in vitro* experiments prior to testing new treatments or diagnostic modalities. To reproduce human periodontal disease in a non-human laboratory *in vivo* system, numerous animal models of PD have been developed using small and large mammals (Struillou et al., 2010). Among these PD models, the mouse model of ligature-induced PD is one of the most

\* Correspondence to: T. Kawai, Department of Immunology and Infectious diseases, The Forsyth Institute, 245 First Street, Cambridge, MA 02142, USA.

E-mail address: [tkawai@forsyth.org](mailto:tkawai@forsyth.org) (T. Kawai).

<sup>1</sup> Contributed equally to this work.

frequently employed animal models to understand the molecular mechanism(s) underlying the onset and progression of PD, as well as to evaluate the efficacy of novel interventions against pathogenic outcomes of PD (Abe and Hajishengallis, 2013). Especially, the availability of a large panel of mouse gene-knockout strains offers an advantage over other animal models in our efforts to elucidate pathogenic engagement of the gene of interest. On the other hand, this model is essentially flawed by the lack of suitable methodology to collect GCF, which is typically sampled by paper point in human or large mammals, such as dogs or monkeys (Chambers et al., 1991; Ha et al., 2011). However, it is nearly impossible to use such method to sample GCF from mice (Fig. 1A & B). Thus, it would be desirable to develop a simple method to sample GCF in a mouse model of ligature-induced PD.

The present study established a method to collect GCF from mice. The basic protocol for this technique is summarized as follows (Fig. 2):

- I. Induce experimental periodontitis by placing a ligature at the second maxillary molar as described (Abe and Hajishengallis, 2013).
- II. Remove the old silk ligature and mount a fresh ligature at the sampling site for 10 min.
- III. Measure the volume of GCF collected in the sampling ligature using a high precision weighing balance.
- IV. Submerge the sampling ligature in PBS containing 0.05% Tween 20 and shake with a vortex mixer.
- V. PBS solution containing sampled GCF can be subjected to measurement of biomarkers using ELISA or similar methods.

15

## 2. Materials and methods

### 2.1. Mouse model of ligature-induced periodontitis

To induce experimental periodontitis, wild-type C57BL/6j mice (6- to 8-week-old) were used. The animals were anesthetized by intraperitoneal injection of a cocktail of ketamine (80 mg/kg) and xylazine (10 mg/kg). This cocktail allows us to anesthetize animals for at least 30 min. After mice were anesthetized, a silk ligature (5-0 silk threads, Johnson & Johnson, New Brunswick, NJ, USA) was placed on the upper left second molar and left for 24 h, 3, and 7 days as described (Abe and Hajishengallis, 2013). Briefly, a ligature was placed through the proximal contacts of the upper left second molar until reached the gingival margin. The procedure was performed using two Castroviejo micro needle holder (Fine Science Tools, CA, USA) under the stereomicroscope assistance (Seiler Evolution xR6, Seiler Microscope, MO, USA). Suture was tied firmly with a double-knot on the buccal side.

Altogether, 10–15 min was required for successful ligature placement. The excess suture was cut using Vannas spring scissors (Fine Science Tools, CA, USA). The upper right second molar without ligature was used as a control.

This study was conducted in strict accordance with the recommendations in the Guide for the Care and Use of Laboratory Animals of the National Institutes of Health and the experimental procedures were approved by the Forsyth Institutional Animal Care and Use Committee (IACUC).

### 2.2. Sampling and measurement of GCF volume

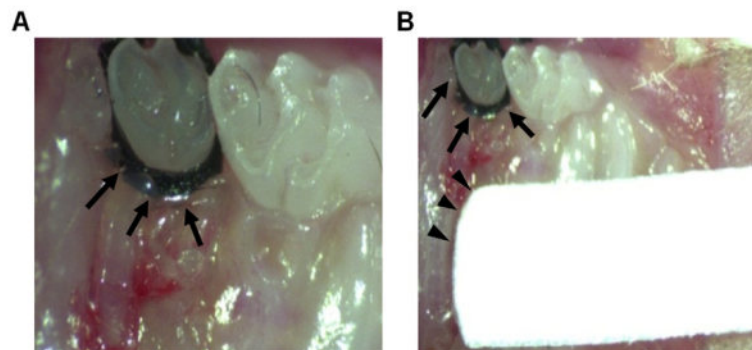
After induction of PD, the ligature was removed from the left side, followed by placement of a new, fresh weighed silk thread (2 cm in length) around the second molar at the left side (inflammatory site) and right side (healthy, non-ligature site). After 10 min, the ligatures from the both sides were collected and then weighed using a Mettler Analytical Balance to a sensitivity of 0.05  $\mu\text{g}$  (Mettler Instrument Corporation, Hightstown, NJ, USA). In order to avoid the bleeding, the primary ligature, that had been used for induction of periodontitis, was removed as gently as possible which barely caused the bleeding. However, if we found the bleeding from gingiva at the removal of primary ligature or at the placement of fresh sampling ligature, we excluded the GCF samples from the subsequent measurements of cytokines. Finally, the collected sampling ligatures were submerged in 100  $\mu\text{L}$  of phosphate buffered saline (pH 7.4) containing 0.05% Tween 20 (PBS-T) and shaken with a vortex mixer for 30 min at +4  $^{\circ}\text{C}$ .

### 2.3. Saliva collection

In order to rule out the possibility that cytokines in the saliva may be contaminated at the GCF sampling which may, in turn, affect the measurements of GCF cytokines, saliva of mouse was also collected and the amounts of cytokines in saliva were measured using ELISA. We used the same silk threads (5-0, Johnson & Johnson) as that used for the GCF collection. Briefly, the silk threads (2 cm length) were weighed first and then were placed into the mouse mouth for 10 min just before GCF collection.

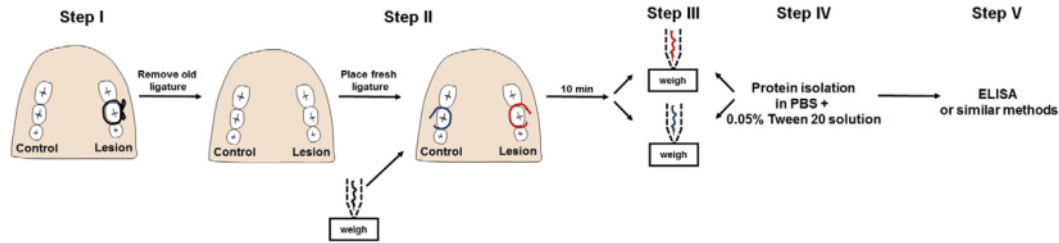
### 2.4. Enzyme-linked immunosorbent assay (ELISA)

IL-1  $\beta$ , IL-6, TNF- $\alpha$ , RANKL and OPG levels in GCF and saliva were determined using commercially available ELISA kits (R&D Systems, Inc., Minneapolis, MN, USA). The weight of GCF and saliva (ng) that was collected using a ligature was converted to volume ( $\mu\text{L}$ ). Then, the concentrations of cytokines in GCF and Saliva were normalized based on the



**Fig. 1.** The size of mouse gingival crevice as compared to the PeriPaper strip used for GCF sampling from human patients. **A)** To induce a periodontal lesion in mice, a silk ligature was placed around the second molar. **B)** By comparing PeriPaper strip (Oralflow Inc. Hewlett, New York, USA), which is typically used to sample human GCF, and the anatomy of mouse gingival crevice, the difficulty of collecting GCF for the ligature-induced lesion is readily apparent. Arrows indicate ligature attached to induce PD in mouse. Arrowheads indicate the PeriPaper strip used for human GCF sampling.

28



**Fig. 2.** Schematic presentation of the developed GCF collection protocol. Step I: Induce experimental periodontitis by placing a ligature at the second maxillary molar; Step II: Replace the old silk ligature by a fresh one with known weight; Step III: Collect the ligatures after 10 min and weighed; Step IV: Protein isolation from the collected ligatures in 100 µL PBS solution containing 0.05% Tween 20; Step V: Biomarkers measurement by ELISA or similar methods.

volume of GCF and saliva weighed, respectively, based on the readout from the ELISA kits. More specifically, the PBS-T containing GCF or saliva (See sections 2.2. and 2.3.) was directly applied to the ELISA plates. In particular, in order to save the samples, all incubation steps were carried out at the volume of 75 µL/well, and the same sample in PBS-T was transferred one by one to different ELISA kits. Finally, the level of each cytokine detected by respective ELISA kit was converted to the concentration at the order of pg/ml.

### 2.5. Determination of alveolar bone loss area in ligature-induced periodontitis

Alveolar bone loss induced in mice was evaluated by stereomicroscopy (Nikon dissecting microscope SMZ745T) and micro-CT (SCANCO micro-computed tomography (mCT)-40 scanner). Using a dissection microscope (Nikon, Tokyo, Japan), horizontal bone loss of buccal aspect was assessed by measuring the distance between the cemento-enamel junction (CEJ) and the alveolar bone crest (ABC) (Kawai et al., 2007). MicroCT (mCT20; SCANCO Medical AG, Bassersdorf, Switzerland) was performed on the maxillary bone of mice that received ligature for 3 and 7 days or control nontreated mice.

### 2.6. Histological evaluation and tartrate-resistant acid phosphatase (TRAP) staining

Mice maxillae with or without ligature for 7 days were decalcified in 10% ethylene-diamine-tetraacetic acid (EDTA) for 2 weeks and embedded in OCT compound. Frozen sections 10-µm thick were cut in a medial-distal direction and stained with Hematoxylin and Eosin (H&E). TRAP staining was performed to detect osteoclasts, followed by nuclear counterstaining with methyl green as described (Kawai et al., 2007).

### 2.7. Statistical analysis

Student's *t*-test was used for comparison of two different outcomes of experiments performed. To assess possible differences in bone resorption, as well as the levels of cytokines produced in GCF during the course of periodontitis development in mice, ANOVA was performed followed by Tukey's test.

## 3. Results

### 3.1. Ligature-induced alveolar bone loss and histological analysis in PD

According to microscopic and microCT evaluations, mouse maxilla with ligature at second molar demonstrated remarkable bone loss (Suppl. Fig. 1A). While visible bone loss was observed as early as Day-3 after ligature placement (Suppl. Fig. 1A), statistical difference compared to control jaw without ligature was detected at Day-7, but not Day-3 (Suppl. Fig. 1B). Prominently elevated emergence of TRAP-

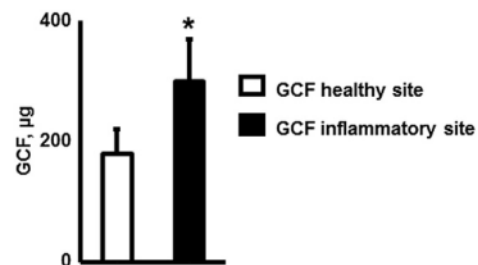
positive osteoclast cells was found in the alveolar bone of tooth the received a ligature compared to that of control (Suppl. Fig. 1C, D). These observations indicated that ligature placement elicited local osteoclastogenesis which, in turn, induced periodontal bone loss.

### 3.2. Dynamic changes of GCF cytokines in the course of ligature-induced PD development

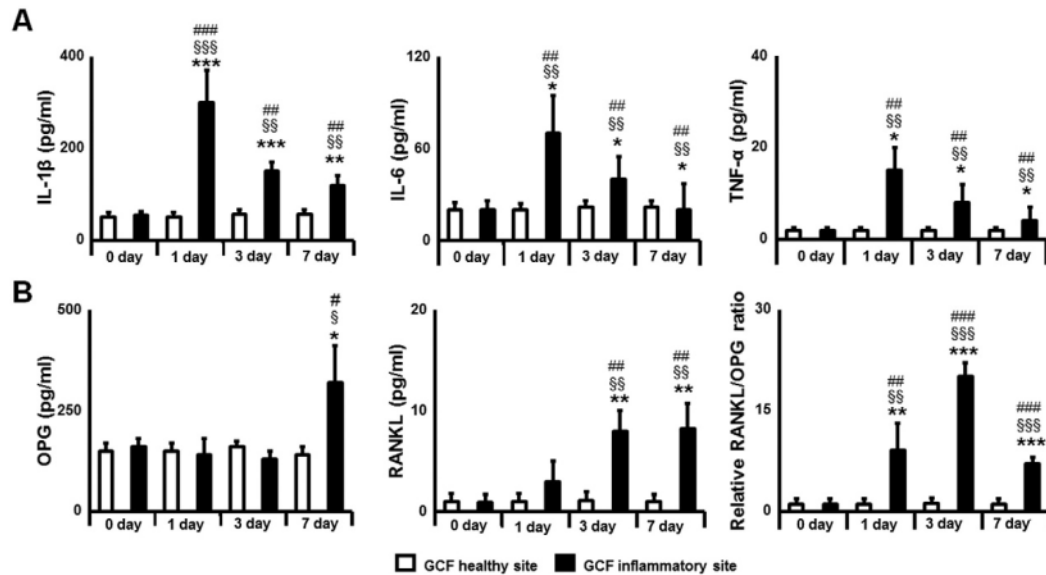
A ligature was placed on left second molar of the maxilla, while right second molar served as a control and did not receive ligature. At 24 h from ligature attachment, GCF was collected from the tooth that received a ligature and showed a significantly elevated volume compared to that of control group (Fig. 3).

Next, using this GCF sampling technique, we measured the levels of proinflammatory cytokines secreted in the GCF of mice induced of PD. At 24 h from placement of ligature, the highest levels of IL-1 $\beta$ , TNF- $\alpha$ , and IL-6 were detected in the GCF of inflammatory sites (left molar), gradually diminishing at Day 3 and Day 7 (Fig. 4A). In contrast to elevated levels of proinflammatory cytokines monitored in the GCF of ligated side, GCF collected from control side showed no elevation from Day-0 to Day-7 (Fig. 3A). More specifically, the levels of these cytokines detected in the ligated site were all significantly higher than the control site (Fig. 4A). It is noteworthy that the sampling ligature soaked with saliva of mice did not show any detectable amount of IL-1 $\beta$ , TNF- $\alpha$ , or IL-6, as sampled from Day-0, 1, 3 and 7 (data not shown), suggesting that the detected pro-inflammatory cytokines are derived from GCF, not saliva.

Since RANKL/OPG ratio is an important indicator of osteoclastogenesis-mediated periodontal bone loss, we evaluated the fluctuation dynamics of OPG and RANKL secreted in GCF. The protein levels of RANKL in GCF increased at 3 and 7 days after ligature placement, while a significantly higher level of OPG was only detected in the ligated site at Day-7 compared to control site. Comparing RANKL/OPG ratio between ligated site and control site, a slight increase was detected at Day-1, reaching a maximum level at Day-3 and then decreasing by Day-7. Importantly, RANKL/OPG ratios were significantly higher



**Fig. 3.** The volume of GCF was elevated in ligated site compared to non-ligated site using GCF sampling ligature. Volume of GCF sampled from healthy control sites (right) and inflammatory sites (left) of mice that received ligature to the left side, but not right side, of second molar in maxilla for 24 h ( $n = 5$  mice/group). \* $p < 0.05$ .



**Fig. 4.** Detecting a battery of cytokines in the GCF using a new silk ligature. **A)** Dynamic changes of some pro-inflammatory cytokines in murine GCF of healthy and inflammatory ligature-induced sites; **B)** Dynamic changes of RANKL and OPG ratio in murine GCF of healthy and inflammatory ligature-induced sites. GCF was sampled from the healthy and inflamed sites of PD-induction ligature at the indicated time points. The levels of IL-1 $\beta$ , TNF- $\alpha$ , and IL-6 were evaluated by ELISA ( $n = 5$  mice/group) and the concentrations of cytokines in GCF were normalized based on the volume of GCF weighed (See sections 2.2.). \* $p < 0.05$ , \*\* $p < 0.01$ , \*\*\* $p < 0.001$ .

in ligated site compared to control site throughout the experimental period (Fig. 4B).

Altogether, the results from this study suggested that the established method of sampling mouse GCF allows us to monitor various cytokines in GCF relative to the dynamic changes that occur during the progression of periodontal bone resorption.

#### 4. Discussion

In the present study, we established a novel noninvasive method of sampling gingival crevicular fluid (GCF) from a silk ligature-induced mouse model of periodontitis. GCF is an exudate that seeps into gingival crevices or periodontal pockets around teeth with inflamed gingiva (Cimasoni, 1983). GCF can be obtained in a noninvasive fashion, making it an accessible source of biomarkers to evaluate ongoing pathophysiological events in periodontal tissues (Armitage, 1996; Kennett et al., 1997; Eley and Cox, 1998). As noted in the introduction, it is nearly impossible to use regular paper points to sample GCF from mice (Fig. 1B). In the present study, we could successfully sample mouse GCF using a silk ligature. We showed that GCF volume was significantly increased in the inflammatory ligature-induced site compared to the control non-ligature placed site (Fig. 3). This is, indeed, a significant technical breakthrough in utilizing a mouse model of PD in that it allows the measurement of real-time production of biomarkers in affected periodontal tissues without sacrificing mice.

The signature proinflammatory cytokines associated with human PD, including IL-1 $\beta$ , TNF- $\alpha$ , and IL-6, were detectable in GCF of the ligature-induced mouse model of PD and showed peak expression as early as Day-1 (Fig. 4A). A previous study induced PD by attachment of a silk ligature soaked with live *Porphyromonas gingivalis* suspension to a molar in a non-human primate model. Results showed that inhibition of IL-1 $\beta$  and TNF- $\alpha$  could suppress periodontal bone destruction (Graves and Cochran, 2003), indicating the pathogenic roles of IL-1 $\beta$  and TNF- $\alpha$  in the onset of PD. However, the kinetics of IL-1 $\beta$  and TNF- $\alpha$  expressions in relation to the expressions of other bone resorption regulatory molecules have been unclear. As demonstrated in this study, detection of IL-1 $\beta$  and TNF- $\alpha$  in GCF which peaked at Day-1

and followed by elevation of RANKL in the later days corresponded to the progression of periodontal bone resorption. Since IL-1 $\beta$  and TNF- $\alpha$  are known to promote RANKL production of bone marrow stromal cells and upregulate RANKL-induced osteoclastogenesis (Romano et al., 2002; Kitaura et al., 2013), it is plausible that peak expressions of IL-1 $\beta$  and TNF- $\alpha$  precede peak expressions of RANKL, as well as bone resorption. Indeed, the peak RANKL/OPG ratio was detected later on Day-3 compared to the maximum level of IL-1 $\beta$  and TNF- $\alpha$  on Day-1 (Fig. 4A & B). These results indicated that the established GCF sampling method can detect the smallest differences of biomarker expression in GCF.

In conclusion, this novel method of sampling mouse GCF can measure the time-dependent secretion patterns of bone resorption-related cytokines relative to changes in periodontal bone loss, but without sacrificing experimental mice.

Supplementary data to this article can be found online at <http://dx.doi.org/10.1016/j.jim.2016.08.008>.

#### 5. Acknowledgements

This study was supported by grants DE-03420, DE-18499, DE-19917, and T32 DE 7327-12 from the National Institute of Dental and Craniofacial Research (NIDCR), Brain Circulation Program to Develop New Leaders for International Dental Education Course through International Collaborative Dental Research and a research fund from King Abdulaziz University of Saudi Arabia.

#### References

- Abe, T., Hajishengallis, G., 2013. Optimization of the ligature-induced periodontitis model in mice. *J. Immunol. Methods* 394, 49–54.
- Armitage, G.C., 1996. Periodontal diseases: diagnosis. *Annals of Periodontology/the American Academy of Periodontology* 1, 37–215.
- Armitage, G.C., 2004. Analysis of gingival crevice fluid and risk of progression of periodontitis. *Periodontol.* 34, 109–119.
- Buduneli, N., Kinane, D.F., 2011. Host-derived diagnostic markers related to soft tissue destruction and bone degradation in periodontitis. *J. Clin. Periodontol.* 38 (Suppl 11), 85–105.

- Chambers, D.A., Imrey, P.B., Cohen, R.L., Crawford, J.M., Alves, M.E., McSwiggin, T.A., 1991. A longitudinal study of aspartate aminotransferase in human gingival crevicular fluid. *J. Periodontol. Res.* 26, 65–74.
- Champagne, C.M., Buchanan, W., Reddy, M.S., Preisser, J.S., Beck, J.D., Offenbacher, S., 2003. Potential for gingival crevice fluid measures as predictors of risk for periodontal diseases. *Periodontology* 2000 31, 167–180.
- Cimasoni, G., 1983. Crevicular fluid updated. *Monogr. Oral Sci.* 12 (III–VII), 1–152.
- Eley, B.M., Cox, S.W., 1998. Advances in periodontal diagnosis. 5. Potential inflammatory and immune markers. *Br. Dent. J.* 184, 220–223.
- Giannobile, W.V., 1997. Crevicular fluid biomarkers of oral bone loss. *Curr. Opin. Periodontol.* 4, 11–20.
- Graves, D.T., Cochran, D., 2003. The contribution of interleukin-1 and tumor necrosis factor to periodontal tissue destruction. *J. Periodontol.* 74, 391–401.
- Ha, J.E., Oh, K.J., Yang, H.J., Jun, J.K., Jin, B.H., Paik, D.I., Bae, K.H., 2011. Oral health behaviors, periodontal disease, and pathogens in preeclampsia: a case-control study in Korea. *J. Periodontol.* 82, 1685–1692.
- Kajjya, M., Giro, G., Taubman, M.A., Han, X., Mayer, M.P., Kawai, T., 2010. Role of periodontal pathogenic bacteria in RANKL-mediated bone destruction in periodontal disease. *Journal of Oral Microbiology* 2.
- Kawai, T., Matsuyama, T., Hosokawa, Y., Makihiro, S., Seki, M., Karimbux, N.Y., Goncalves, R.B., Valverde, P., Dibart, S., Li, Y.P., Miranda, L.A., Ernst, C.W., Izumi, Y., Taubman, M.A., 2006. B and T lymphocytes are the primary sources of RANKL in the bone resorptive lesion of periodontal disease. *Am. J. Pathol.* 169, 987–998.
- Kawai, T., Paster, B.J., Komatsuzawa, H., Ernst, C.W., Goncalves, R.B., Sasaki, H., Ouhara, K., Stashenko, P.P., Sugai, M., Taubman, M.A., 2007. Cross-reactive adaptive immune response to oral commensal bacteria results in an induction of receptor activator of nuclear factor-kappaB ligand (RANKL)-dependent periodontal bone resorption in a mouse model. *Oral Microbiol. Immunol.* 22, 208–215.
- Kennett, C.N., Cox, S.W., Eley, B.M., 1997. Investigations into the cellular contribution to host tissue proteases and inhibitors in gingival crevicular fluid. *J. Clin. Periodontol.* 24, 424–431.
- Kitaura, H., Kimura, K., Ishida, M., Kohara, H., Yoshimatsu, M., Takano-Yamamoto, T., 2013. Immunological reaction in TNF-alpha-mediated osteoclast formation and bone resorption in vitro and in vivo. *Clin. Dev. Immunol.* 2013, 181849.
- Loos, B.G., 2005. Systemic markers of inflammation in periodontitis. *J. Periodontol.* 76, 2106–2115.
- Romas, E., Gillespie, M.T., Martin, T.J., 2002. Involvement of receptor activator of NFkappaB ligand and tumor necrosis factor-alpha in bone destruction in rheumatoid arthritis. *Bone* 30, 340–346.
- Struillou, X., Boutigny, H., Soueidan, A., Layrolle, P., 2010. Experimental animal models in periodontology: a review. *Open Dent. J.* 4, 37–47.
- Taubman, M.A., Kawai, T., 2001. Involvement of T-lymphocytes in periodontal disease and in direct and indirect induction of bone resorption. *Critical reviews in oral biology and medicine: an official publication of the American Association of Oral Biologists* 12, 125–135.

Update

**Journal of Immunological Methods**

Volume 441, Issue , February 2017, Page 72

DOI: <https://doi.org/10.1016/j.jim.2017.01.004>



Corrigendum

Corrigendum to “A novel method of sampling gingival crevicular fluid from a mouse model of periodontitis”  
[J Immunol Methods 438 (2016) 21-25]



S. Matsuda<sup>a,b</sup>, A. Movila<sup>a</sup>, M. Suzuki<sup>a,c</sup>, M. Kajiya<sup>a,b</sup>, W. Wisitrasameewong<sup>a,d,e</sup>, R. Kayal<sup>f</sup>, J. Hirshfeld<sup>a,g</sup>,  
A. Al-Dharrab<sup>f</sup>, I.J. Savitri<sup>a,h</sup>, A. Mira<sup>f</sup>, H. Kurihara<sup>b</sup>, M.A. Taubman<sup>a</sup>, T. Kawai<sup>a,d,\*</sup>

<sup>a</sup> The Forsyth Institute, Department of Immunology and Infectious Diseases, Cambridge, MA, USA

<sup>b</sup> Department of Periodontology, Hiroshima University Faculty of Dentistry, Hiroshima, Japan

<sup>c</sup> College of Dentistry, The Ohio State University, Columbus, OH, USA

<sup>d</sup> Department of Oral Medicine, Infection and Immunity, Harvard School of Dental Medicine, Harvard University, Boston, MA, USA

<sup>e</sup> Department of Periodontology, Faculty of Dentistry, Chulalongkorn University, Bangkok, Thailand

<sup>f</sup> King Abdulaziz University, Faculty of Dentistry, Jeddah, Saudi Arabia

<sup>g</sup> Department of Restorative Dentistry, University of Birmingham, Birmingham, UK

<sup>h</sup> Universitas Airlangga, Faculty of Dental Medicine, Department of Periodontology, Jawa Timur, Indonesia

The authors regret <to being responsible for a spelling mistake occurring in the last name of the co-author Josefine Hirschfeld>.  
The authors would like to apologise for any inconvenience caused.

DOI of original article: <http://dx.doi.org/10.1016/j.jim.2016.08.008>.

\* Corresponding author at: The Forsyth Institute, Department of Immunology and Infectious Diseases, Cambridge, MA, USA.  
E-mail addresses: [tkawai@forsyth.org](mailto:tkawai@forsyth.org), [tkawai@nova.edu](mailto:tkawai@nova.edu) (T. Kawai).



# A novel method of sampling gingival crevicular fluid from a mouse model of periodontitis

## ORIGINALITY REPORT

**20%**  
SIMILARITY INDEX

**14%**  
INTERNET SOURCES

**16%**  
PUBLICATIONS

**0%**  
STUDENT PAPERS

## PRIMARY SOURCES

**1** [www.scielo.br](http://www.scielo.br) Internet Source **1%**

**2** [arthritis-research.biomedcentral.com](http://arthritis-research.biomedcentral.com) Internet Source **1%**

**3** [www.mdpi.com](http://www.mdpi.com) Internet Source **1%**

**4** [asbmr.onlinelibrary.wiley.com](http://asbmr.onlinelibrary.wiley.com) Internet Source **1%**

**5** [www.omicsonline.org](http://www.omicsonline.org) Internet Source **1%**

**6** [bergeslab.byu.edu](http://bergeslab.byu.edu) Internet Source **1%**

**7** [www.frontiersin.org](http://www.frontiersin.org) Internet Source **1%**

**8** Minzhen Ding, Barbara A. St. Pierre, John F. Parkinson, Poonam Medberry et al. "Inducible Nitric-oxide Synthase and Nitric Oxide Production in Human Fetal Astrocytes and **<1%**

# Microglia", Journal of Biological Chemistry, 1997

Publication

9

[docserv.uni-duesseldorf.de](https://docserv.uni-duesseldorf.de)

Internet Source

<1 %

10

[theses.gla.ac.uk](https://theses.gla.ac.uk)

Internet Source

<1 %

11

[www.ncbi.nlm.nih.gov](https://www.ncbi.nlm.nih.gov)

Internet Source

<1 %

12

Martin A. Taubman, Toshihisa Kawai, Xiaozhe Han. "The new concept of periodontal disease pathogenesis requires new and novel therapeutic strategies", Journal of Clinical Periodontology, 2007

Publication

<1 %

13

[assets.researchsquare.com](https://assets.researchsquare.com)

Internet Source

<1 %

14

[mts.intechopen.com](https://mts.intechopen.com)

Internet Source

<1 %

15

Izabel C.V. de Oliveira, Leonardo V. Galvão-Moreira, Juliana L. Vilela, Murillo Duarte-Silva et al. "Cinnamaldehyde modulates host immunoinflammatory responses in rat ligature-induced periodontitis and peripheral blood mononuclear cell models", International Immunopharmacology, 2023

Publication

<1 %

16 Xiaozhe Han. "Interference with immune-cell-mediated bone resorption in periodontal disease", *Periodontology* 2000, 10/2007  
Publication <1 %

---

17 [respiratory-research.biomedcentral.com](http://respiratory-research.biomedcentral.com)  
Internet Source <1 %

---

18 [www.annualreviews.org](http://www.annualreviews.org)  
Internet Source <1 %

---

19 [www.bjr.boneandjoint.org.uk](http://www.bjr.boneandjoint.org.uk)  
Internet Source <1 %

---

20 T. Ohnishi. "Involvement of Cot/Tp12 in Bone Loss during Periodontitis", *Journal of Dental Research*, 02/01/2010  
Publication <1 %

---

21 Hiroyuki Kanzaki, Seicho Makihiro, Maiko Suzuki, Takenobu Ishii et al. "Soluble RANKL Cleaved from Activated Lymphocytes by TNF- $\alpha$ -Converting Enzyme Contributes to Osteoclastogenesis in Periodontitis", *The Journal of Immunology*, 2016  
Publication <1 %

---

22 [www.kjim.org](http://www.kjim.org)  
Internet Source <1 %

---

23 [www.nature.com](http://www.nature.com)  
Internet Source <1 %

---

24 "AAV2/1-TNFR:Fc gene delivery prevents periodontal disease progression", Gene Therapy, 12/11/2008  
Publication <1 %

---

25 Muia, C.. "Pyrrolidine dithiocarbamate reduced experimental periodontitis", European Journal of Pharmacology, 20060613  
Publication <1 %

---

26 [www.tandfonline.com](http://www.tandfonline.com)  
Internet Source <1 %

---

27 Julie Marchesan, Mustafa S. Girnary, Li Jing, Michael Zhe Miao et al. "An experimental murine model to study periodontitis", Nature Protocols, 2018  
Publication <1 %

---

28 Li Zhu, Hui Li, Xueqin Yang, Li Xue, Xin Li, Junrong Du. "Effects of *Streptococcus salivarius* K12 on Experimental Periodontitis and Oral Microbiota in Mice", Journal of Biosciences and Medicines, 2019  
Publication <1 %

---

29 Maekawa, S., S. Katagiri, Y. Takeuchi, R. Komazaki, A. Ohtsu, S. Udagawa, and Y. Izumi. "Bone metabolic microarray analysis of ligature-induced periodontitis in streptozotocin-induced diabetic mice", Journal of Periodontal Research, 2016.  
Publication <1 %

---

30

Saika Ogawa, Hideki Kitaura, Akiko Kishikawa, Jiawei Qi et al. "TNF- $\alpha$  is responsible for the contribution of stromal cells to osteoclast and odontoclast formation during orthodontic tooth movement", PLOS ONE, 2019

Publication

---

<1 %

31

downloads.hindawi.com

Internet Source

---

<1 %

32

www.scirp.org

Internet Source

---

<1 %

33

Lin, J., L. Bi, X. Yu, T. Kawai, M. A. Taubman, B. Shen, and X. Han. "Porphyromonas gingivalis Exacerbates Ligature-Induced, RANKL-Dependent Alveolar Bone Resorption via Differential Regulation of Toll-Like Receptor 2 (TLR2) and TLR4", Infection and Immunity, 2014.

Publication

---

<1 %

34

M. Mogi. "Differential Expression of RANKL and Osteoprotegerin in Gingival Crevicular Fluid of Patients with Periodontitis", Journal of Dental Research, 02/01/2004

Publication

---

<1 %

35

Nidhish Francis, Babatunde A. Ayodele, Neil M. O'Brien-Simpson, Walter Birchmeier et al. "Keratinocyte-specific ablation of protease-activated receptor 2 prevents gingival

<1 %

inflammation and bone loss in a mouse model of periodontal disease", Cellular Microbiology, 2018

Publication

36

[deepblue.lib.umich.edu](http://deepblue.lib.umich.edu)

Internet Source

<1 %

37

[journals.lww.com](http://journals.lww.com)

Internet Source

<1 %

38

[nibsc.org](http://nibsc.org)

Internet Source

<1 %

39

Bitto, Alessandra, Giacomo Oteri, Michele Pisano, Francesca Polito, Natasha Irrera, Letteria Minutoli, Francesco Squadrito, and Domenica Altavilla. "Adenosine receptor stimulation by polynucleotides (PDRN) reduces inflammation in experimental periodontitis", Journal Of Clinical Periodontology, 2013.

Publication

<1 %

40

X. Cai. "Protective effects of baicalin on ligature-induced periodontitis in rats", Journal of Periodontal Research, 5/8/2007

Publication

<1 %

41

[etda.libraries.psu.edu](http://etda.libraries.psu.edu)

Internet Source

<1 %

42

[iai.asm.org](http://iai.asm.org)

Internet Source

<1 %

- 
- 43 [onlinelibrary.wiley.com](http://onlinelibrary.wiley.com) Internet Source <1 %
- 
- 44 [pure.uva.nl](http://pure.uva.nl) Internet Source <1 %
- 
- 45 [s3.amazonaws.com](http://s3.amazonaws.com) Internet Source <1 %
- 
- 46 [tohoku.repo.nii.ac.jp](http://tohoku.repo.nii.ac.jp) Internet Source <1 %
- 
- 47 Carole Speziani. "Murine dendritic cell transdifferentiation into osteoclasts is differentially regulated by innate and adaptive cytokines", *European Journal of Immunology*, 03/2007  
Publication <1 %
- 
- 48 Mojgan Sabet, Howard B. Cottam, Donald G. Guiney. "Modulation of cytokine production and enhancement of cell viability by TLR7 and TLR9 ligands during anthrax infection of macrophages", *FEMS Immunology & Medical Microbiology*, 2006  
Publication <1 %
- 
- 49 Paul B. Rosenberg. "Clinical aspects of inflammation in Alzheimer's disease", *International Review of Psychiatry*, 2009  
Publication <1 %
-

50

Y Nishijima. "Levels of RANKL and OPG in gingival crevicular fluid during orthodontic tooth movement and effect of compression force on releases from periodontal ligament cells in vitro", Orthodontics and Craniofacial Research, 5/2006

Publication

<1 %

51

Y. Harada. "Effect of adoptive transfer of antigen-specific B cells on periodontal bone resorption", Journal of Periodontal Research, 4/2006

Publication

<1 %

52

"Oral Mucosal Immunity and Microbiome", Springer Science and Business Media LLC, 2019

Publication

<1 %

53

Nagihan Bostanci, Tunc İlgenli, Gülnur Emingil, Beral Afacan et al. "Gingival crevicular fluid levels of RANKL and OPG in periodontal diseases: implications of their relative ratio", Journal of Clinical Periodontology, 2007

Publication

<1 %

Exclude quotes Off

Exclude matches Off

Exclude bibliography On



# A novel method of sampling gingival crevicular fluid from a mouse model of periodontitis

---

## GRADEMARK REPORT

---

FINAL GRADE

**/0**

GENERAL COMMENTS

**Instructor**

---

PAGE 1

---

PAGE 2

---

PAGE 3

---

PAGE 4

---

PAGE 5

---

PAGE 6

---

PAGE 7

---