



# Obstetric Violence in Spain (Part I): Women's Perception and Interterritorial Differences

Volume 17 · Issue 21 | November (I) 2020

# Editorial Board

**Prof. Dr. Paul B. Tchounwou** [Website](#) [SciProfiles](#)

*Editor-in-Chief*

Department of Biology, College of Science, Engineering and Technology, Jackson State University, 1400 Lynch Street, Box 18750, Jackson, MS 39217, USA

**Interests:** environmental health and diseases; gene-environment interactions; environmental toxicology, mutagenesis and carcinogenesis; environmental epidemiology and disease control; health risk assessment and management; ecological risk assessment and management; environmental chemistry and computational toxicology; environmental genomics and proteomics; environmental medicine; and natural resources damage assessment and management

**Special Issues, Collections and Topics in MDPI journals**

---



**Prof. Dr. Olaf Gefeller \*** [Website](#) [SciProfiles](#)

*Section Editor-in-Chief*

Department of Medical Informatics, Biometry and Epidemiology, Friedrich-Alexander-University of Erlangen-Nuremberg, 91054 Erlangen, Germany

**Interests:** epidemiology; biostatistics; melanoma; ultraviolet radiation; UV index; prevention of sun exposure

\* Section: Skin Health

**Special Issues, Collections and Topics in MDPI journals**

---

**Prof. Dr. Fabrizio Bert \*** [Website](#) [SciProfiles](#)

*Section Editor-in-Chief*

Department of Public Health, University of Turin, Via Santena 5 bis, 10126 Turin, Italy

**Interests:** public health; epidemiology; e-health; mental health; minority health

\* Section: Digital Health

**Special Issues, Collections and Topics in MDPI journals**

---



**Prof. Dr. Nicola Magnavita \*** [Website](#) [SciProfiles](#)

*Section Editor-in-Chief*

Department of Public Health, Università Cattolica del Sacro Cuore, Largo Gemelli 8, 00168 Roma, Italy

**Interests:** health promotion; public health; epidemiology health; risk assessment; safety; risk analysis; epidemiology and public Health; Healthcare; Environmental Risk Assessment; Health and Safety sleep disorders and sleep medicine; risk factors; determination health risk assessment; exposure assessment; environmental exposure occupational health; hospital management; chemical risk assessment environmental epidemiology; health impact assessment informed consent; occupational epidemiology; chemical safety occupational medicine; occupational health and disease; inhalation toxicology; environmental medicine; aging and work; hazardous workers

\* Section: Nursing

**Special Issues, Collections and Topics in MDPI journals**

---



**Prof. Dr. Germán Vicente-Rodríguez \*** [Website](#) [SciProfiles](#)

*Section Editor-in-Chief*

Department of Physiatry and Nursing, Faculty of Health and Sport Sciences (FCSD), University of Zaragoza, Ronda Misericordia 5, 22001 Huesca, Spain

**Interests:** adolescents; MASS; osteoporosis; children; fractures; physical-activity; publication bias; weight-bearing exercise; vitamin-D status; impact exercise

\* Section: Adolescents

**Special Issues, Collections and Topics in MDPI journals**

---



**Prof. Dr. Dongsheng Ji \*** [Website](#) [SciProfiles](#)

*Section Editor-in-Chief*

State Key Laboratory of Atmospheric Boundary Layer Physics and Atmospheric Chemistry, Institute of Atmospheric Physics, Chinese Academy of Sciences, Beijing 100029, China

**Interests:** atmospheric environment; atmospheric chemistry; atmospheric physics; aerosol chemistry; volatile organic compounds; photochemical air pollution; regional air pollution; hazardous airborne elements; carbonaceous aerosols; atmospheric pollution control

\* Section: Air



**Prof. Dr. Javier Abián-Vicén** \* [Website1](#) [Website2](#) [SciProfiles](#)

*Section Editor-in-Chief*

Performance and Sports Rehabilitation Laboratory, Faculty of Sport Sciences, University of Castilla-La Mancha, 45071 Toledo, Spain

**Interests:** sport science; sport biomechanics; physical activity; caffeine; ergogenic aids; racquet sports; injury prevention; exercise performance; sonoelastography in sports injury diagnosis

\* Section: Disease Prevention

Special Issues, Collections and Topics in MDPI journals



**Prof. Dr. David Rodríguez-Lázaro** \* [Website](#) [SciProfiles](#)

*Section Editor-in-Chief*

Microbiology Section, Department of Biotechnology and Food Science, Faculty of Science, University of Burgos, 09001 Burgos, Spain

**Interests:** food-borne pathogens; food safety; food microbiology

\* Section: Environmental Microbiology

Special Issues, Collections and Topics in MDPI journals



**Prof. Dr. Fulvio Lauretani** \* [Website](#) [SciProfiles](#)

*Section Editor-in-Chief*

Geriatric-Rehabilitation Department, University Hospital of Parma, University of Parma, 43121 Parma, Italy

**Interests:** frail older persons; parkinsonism; dementia; amyloid PET; older persons

\* Section: Aging

Special Issues, Collections and Topics in MDPI journals

**Prof. Dr. Jinyou Shen** \* [Website](#) [SciProfiles](#)

*Section Editor-in-Chief*

School of Environmental and Biological Engineering, Nanjing University of Science and Technology, Nanjing 210094, China

**Interests:** wastewater treatment process; environmental engineering; anaerobic digestion; bioelectrochemistry; nanobiotechnology; advanced oxidation processes treatment; environmental remediation; biodegradation; renewable energy

\* Section: Chemoenvironment



**Prof. Dr. Alessandra Casuccio** \* [Website](#) [SciProfiles](#)

*Section Editor-in-Chief*

Department of Health Promotion Sciences Maternal and Infant Care, Internal Medicine and Medical Specialties "G. D'Alessandro" – Hygiene section, University of Palermo, 90133 Palermo, Italy

**Interests:** public health; preventive medicine; communicable disease prevention; health promotion; palliative care epidemiology; health determinants

\* Section: Women's Health

Special Issues, Collections and Topics in MDPI journals



**Prof. Dr. Gianrico Spagnuolo** \* [Website](#) [SciProfiles](#)

*Section Editor-in-Chief*

Department of Neuroscience, Reproductive and Odontostomatological Sciences, University of Naples "Federico II", 80131 Naples, Italy

**Interests:** oral medicine; dental materials; operative dentistry; oral health

\* Section: Oral Health

Special Issues, Collections and Topics in MDPI journals



**Dr. Jitse P. van Dijk** \* [Website](#) [SciProfiles](#)

*Section Editor-in-Chief*

1. Department of Community and Occupational Medicine, University Medical Center Groningen, University of Groningen, 9713 AV Groningen, The Netherlands

2. Olomouc University Social Health Institute, Palacky University Olomouc, 771 11 Olomouc, Czech Republic

3. Graduate School Kosice Institute for Society and Health, P.J. Safarik University in Kosice, 040 11 Kosice, Slovakia

**Interests:** mental health; adolescents; Roma health; religiosity/spirituality and health

\* Section: Children's Health

Special Issues, Collections and Topics in MDPI journals



**Dr. David Berrigan** \* Website SciProfiles

*Section Editor-in-Chief*

Division of Cancer Control and Population Sciences, Behavioral Research Program, National Cancer Institute, 9609 Medical Center Drive MSC 7344, Bethesda, MD 20892, USA

**Interests:** cancer prevention; built environment; physical activity; obesity; energy balance; natural experiments; transportation and health; acculturation; geospatial approaches to cancer control; childhood obesity

\* Section: Health Behavior, Chronic Disease and Health Promotion

Special Issues, Collections and Topics in MDPI journals



**Prof. Dr. Ulf-G. Gerdtham** \* Website SciProfiles

*Section Editor-in-Chief*

Department of Clinical Sciences, Department of Economics, Lund University, P.O. Box 7082, S-220 07 Lund, Sweden

**Interests:** health economics; health econometrics; inequalities in health; economics of health behaviour; international health expenditure; health system and organization

\* Section: Health Economics

Special Issues, Collections and Topics in MDPI journals

**Prof. Dr. Jon Øyvind Odland** \* Website SciProfiles

*Section Editor-in-Chief*

Department of Public Health and Nursing, UiT The Arctic University of Norway, 9037 Tromsø, Norway

**Interests:** public health; epidemiology; environmental health; reproductive health; pregnancy care; climate change

\* Section: Global Health

Special Issues, Collections and Topics in MDPI journals



**Prof. Dr. William A. Toscano** \* Website

*Section Editor-in-Chief*

Division of Environmental Health Sciences, University of Minnesota, School of Public Health, Minneapolis, MN 55455, USA

**Interests:** toxicology; environmental hormones; public health genomics; environmental signaling

\* Section: Environmental Health

Special Issues, Collections and Topics in MDPI journals

**Prof. Dr. Ivo Iavicoli** \* Website SciProfiles

*Section Editor-in-Chief*

Department of Public Health, University of Naples Federico II, Via Pansini 5, 80131 Naples, Italy

**Interests:** occupational medicine; public health; nanosafety; active aging; occupational toxicology; industrial health; biological monitoring; occupational risk assessment; occupational diseases; occupational carcinogens

\* Section: Occupational Safety and Health

Special Issues, Collections and Topics in MDPI journals



**Prof. Dr. Kristie L. Ebi** \* Website SciProfiles

*Section Editor-in-Chief*

Department of Global Health, University of Washington, 4225 Roosevelt Way NE, Seattle, WA 98105, USA

**Interests:** health risks of climate variability and change; health adaptation; health co-benefits of mitigation policy; sustainable development

\* Section: Climate Change

Special Issues, Collections and Topics in MDPI journals



**Prof. Dr. Jimmy T. Efrid** \* Website SciProfiles

*Section Editor-in-Chief*

1. VA - Cooperative Studies Program Coordinating Center, Boston, MA, USA

2. Department of Radiation Oncology, Case Western Reserve University, School of Medicine, Cleveland, OH, USA

**Interests:** statistical methods; epidemiological study design; risk modeling; cardiovascular disease; cancer

\* Section: Public Health Statistics and Risk Assessment

Special Issues, Collections and Topics in MDPI journals



**Dr. Jun Hou** \* Website SciProfiles

*Section Editor-in-Chief*

College of Environment, Hohai University, Nanjing 210098, China

**Interests:** water quality improvement technology; water environment protection and bioremediation; coupling of biofilms and active substrata; ecological engineering; nanomaterials for environmental remediation; environmental behaviors of nanomaterials; toxicity of manufactured nanoparticles

\* Section: Water Science and Technology

Special Issues, Collections and Topics in MDPI journals



# Int. J. Environ. Res. Public Health, Volume 17, Issue 21 (November-1 2020) – 591 articles



**Cover Story** (view full-size image): Obstetric violence is a concept that is being debated. Despite this, many women around the world report experiencing it. This study provides evidence of obstetric violence in Spain. The results suggest that Spain has a problem with obstetric violence. It is essential to reflect on obstetric practices because it seems that some women are being absorbed by the technical-scientific authority of health personnel and the patriarchal authority of structural violence. It is necessary to invest effort in improving some of the indicators related to maternal and child health. It is important to consider each of the aspects of maternal care as part of the sexual and reproductive life of women, and neither the comprehensive care received in the health system nor the legislation that should exist to protect women from obstetric violence can be dissociated.

[View this paper.](#)

- Issues are regarded as officially published after their release is announced to the table of contents alert mailing list.
- You may sign up for e-mail alerts to receive table of contents of newly released issues.
- PDF is the official format for papers published in both, html and pdf forms. To view the papers in pdf format, click on the "PDF Full-text" link, and use the free Adobe Reader to open them.

Order results	Result details	Section
Publication Date	Normal	All Sections

Show export options

[Open Access](#) [Article](#)



## Association of Cotinine-Verified Cigarette Exposure with Chronic Rhinosinusitis in Korean Adults

by Kijeong Lee, In Hak Choi, Hoyoung Lee, Soojeong Choi, Sang Hag Lee and Tae Hoon Kim

*Int. J. Environ. Res. Public Health* 2020, 17(21), 8291; <https://doi.org/10.3390/ijerph17218291> - 09 Nov 2020

Cited by 2 | Viewed by 1140

**Abstract** Chronic rhinosinusitis is known to be influenced by cigarette exposure; however, this relationship is based on the presence of nasal polyps, and objective measurements of cigarette exposure in chronic rhinosinusitis are not well established. This study aimed to estimate the association between chronic [...] [Read more.](#)

[► Show Figures](#)

[Open Access](#) [Article](#)



## Correlates of the Mental Fitness of Female High School Freshmen: Focus on Multidimensional Empathy and Brain Function

by Hee Wook Weon, Jiyoung Lim and Hae Kyoung Son

*Int. J. Environ. Res. Public Health* 2020, 17(21), 8290; <https://doi.org/10.3390/ijerph17218290> - 09 Nov 2020

Viewed by 932

**Abstract** We examined the association between multidimensional empathy, brain function, and mental fitness and identified correlates of mental fitness. In total, 146 female high school freshmen from a South Korean school participated in this cross-sectional study. Data were collected from March to April 2019, [...] [Read more.](#)

[Open Access](#) [Review](#)



## Predictive Performance Models in Long-Distance Runners: A Narrative Review

by José Ramón Alvero-Cruz, Elvis A. Carnero, Manuel Avelino Giráldez García, Fernando Alacid, Lorena Correas-Gómez, Thomas Rosemann, Pantelis T. Nikolaidis and Beat Knechtle

*Int. J. Environ. Res. Public Health* 2020, 17(21), 8289; <https://doi.org/10.3390/ijerph17218289> - 09 Nov 2020

Cited by 7 | Viewed by 2214

**Abstract** Physiological variables such as maximal oxygen uptake ( $VO_{2max}$ ), velocity at maximal oxygen uptake ( $vVO_{2max}$ ), running economy (RE) and changes in lactate levels are considered the main factors determining performance in long-distance races. The aim of this review [...] [Read more.](#)

(This article belongs to the Special Issue **Mental and Physical Health Related Determinants and Consequences of Marathon and Ultra-Marathon Running**)

[► Show Figures](#)

Open Access Brief Report



## Information in Spanish on the Internet about the Prevention of COVID-19

by Ignacio Hernández-García and Teresa Giménez-Júlvez

*Int. J. Environ. Res. Public Health* 2020, 17(21), 8228; <https://doi.org/10.3390/ijerph17218228> - 07 Nov 2020

Cited by 3 | Viewed by 1017

**Abstract** *Objective.* Our objective was to analyze the evolution of the information in Spanish online about the prevention of the coronavirus disease 2019 (COVID-19). *Methods.* On 1 March and 13 July 2020, two searches were conducted on Google with the terms "Prevención [...] Read more.

(This article belongs to the Special Issue Media Use and Health)

Open Access Article



## Transmission Media of Foodborne Diseases as an Index Prediction of Diarrheagenic *Escherichia coli*: Study at Elementary School, Surabaya, Indonesia

by Fariani Syahrul, Chatarina U. Wahyuni, Hari B. Notobroto, Eddy B. Wasito, Annis C. Adi and Febi Dwirahmadi

*Int. J. Environ. Res. Public Health* 2020, 17(21), 8227; <https://doi.org/10.3390/ijerph17218227> - 07 Nov 2020

Cited by 5 | Viewed by 1181

**Abstract** Foodborne diseases (FBDs) have a large disease burden among children. The major type of FBD in children is diarrhea, caused mainly by contaminated food. One of the diarrhea pathogens is Diarrheagenic *Escherichia coli* (DEC). The aim of this study was to establish a [...] Read more.

► Show Figures

Open Access Review



## Use of Acupuncture for the Treatment of Sports-Related Injuries in Athletes: A Systematic Review of Case Reports

by Ji-Won Lee, Jun-Hwan Lee and Song-Yi Kim

*Int. J. Environ. Res. Public Health* 2020, 17(21), 8226; <https://doi.org/10.3390/ijerph17218226> - 06 Nov 2020

Cited by 3 | Viewed by 2645

**Abstract** Acupuncture is one of the representative complementary and alternative medicine treatments used for various types of pain. This systematic review summarized and analyzed clinical case reports/series utilizing acupuncture for treating sports injuries in athletes, thereby providing the basis for further research to establish [...] Read more.

(This article belongs to the Special Issue Physical Rehabilitation and Sports Medicine of Human Movement)

► Show Figures

Open Access Article



## Determinants for Safety Climate Evaluation of Construction Industry Sites in Saudi Arabia

by Anas A. Makki and Ibrahim Mosly

*Int. J. Environ. Res. Public Health* 2020, 17(21), 8225; <https://doi.org/10.3390/ijerph17218225> - 06 Nov 2020

Cited by 6 | Viewed by 1264

**Abstract** The hazardous nature of the construction industry requires giving increasing attention to safety management and the available means to eliminate or reduce the risks of workers' injuries. Workers in the construction industry of Saudi Arabia face similar daily risks as workers face in [...] Read more.

Open Access Article



## Comparative Analysis of PM<sub>2.5</sub>-Bound Polycyclic Aromatic Hydrocarbons (PAHs), Nitro-PAHs (NPAHs), and Water-Soluble Inorganic Ions (WSIIs) at Two Background Sites in Japan

by Lu Yang, Lulu Zhang, Hao Zhang, Quanyu Zhou, Xuan Zhang, Wanli Xing, Akinori Takami, Kei Sato, Atsushi Shimizu, Ayako Yoshino, Naoki Kaneyasu, Atsushi Matsuki, Kazuichi Hayakawa, Akira Toriba and Ning Tang

*Int. J. Environ. Res. Public Health* 2020, 17(21), 8224; <https://doi.org/10.3390/ijerph17218224> - 06 Nov 2020

Cited by 9 | Viewed by 1343

**Abstract** Daily PM<sub>2.5</sub> (particulate matter with aerodynamic diameter  $\leq 2.5 \mu\text{m}$ ) samples were simultaneously collected at two background sites (Wajima Air Monitoring Station (WAMS) and Fukue-Jima Atmosphere and Aerosol Monitoring Station (FAMS)) in Japan in the East Asian winter and summer monsoon periods of [...] Read more.

(This article belongs to the Special Issue Polycyclic Aromatic Hydrocarbons: Sources, Monitoring, and Health Effects)

► Show Figures



Article

# Transmission Media of Foodborne Diseases as an Index Prediction of Diarrheagenic *Escherichia coli*: Study at Elementary School, Surabaya, Indonesia

Fariani Syahrul <sup>1,\*</sup>, Chatarina U. Wahyuni <sup>1</sup>, Hari B. Notobroto <sup>2</sup>, Eddy B. Wasito <sup>3</sup>, Annis C. Adi <sup>4</sup> and Febi Dwirahmadi <sup>5</sup>

<sup>1</sup> Department of Epidemiology, Faculty of Public Health, Universitas Airlangga, Surabaya 60115, Indonesia; chatrin03@yahoo.com

<sup>2</sup> Department of Biostatistic, Faculty of Public Health Universitas Airlangga, Surabaya 60115, Indonesia; haribasuki.n@fkm.unair.ac.id

<sup>3</sup> Department of Microbiology, Faculty of Medicine Universitas Airlangga, Surabaya 60115, Indonesia; eddybaguswasito@yahoo.co.id

<sup>4</sup> Department of Nutrition, Faculty of Public Health Universitas Airlangga, Surabaya 60115, Indonesia; annis\_catur@fkm.unair.ac.id

<sup>5</sup> Center for Environment and Population Health, School of Medicine, Griffith University, Queensland 4215, Australia; f.dwirahmadi@griffith.edu.au

\* Correspondence: fariani.s@fkm.unair.ac.id; Tel.: +62-812-351-974-6

Received: 12 September 2020; Accepted: 3 November 2020; Published: 7 November 2020



**Abstract:** Foodborne diseases (FBDs) have a large disease burden among children. The major type of FBD in children is diarrhea, caused mainly by contaminated food. One of the diarrhea pathogens is Diarrheagenic *Escherichia coli* (DEC). The aim of this study was to establish a model of microbial prediction (DEC) in stool, caused by the transmission of FBDs in elementary schoolchildren. An observational analytic study was conducted, with a nested case-control study design. In Stage I, the study population was children in a selected elementary school at Surabaya. The sample size for Stage I was 218 children. In Stage II, the case sample was all children with a positive test for DEC (15 children), and the control sample was all children who had tested negative for DEC (60 children). The result of the laboratory tests showed that the proportion of DEC in children was 6.88% (15 of 218 children) and the proportion of *Escherichia coli* O157:H7 in children was only 0.46%. The most significant mode of transmission included in the model was the snacking frequency at school and the risk classification of food that was often purchased at school. The formulation of the predicting model of DEC in stool can be used as an early warning against the incidence of FBDs in elementary schoolchildren.

**Keywords:** children; diarrheagenic *Escherichia Coli*; foodborne diseases

## 1. Introduction

Foodborne diseases (FBDs) are one of the leading causes of morbidity and mortality worldwide, particularly among children in developing countries [1–3]. The World Health Organization (WHO) estimated that, every year around the world, the consumption of unsafe food causes 600 million cases of FBDs and 420,000 deaths. Every year, more than 150 million people are affected by FBDs, and more than 170,000 die. Diarrheal diseases are responsible for the majority of deaths because of FBDs in Southeast Asia [4].

FBDs are diseases caused by consuming contaminated food/drinks that contain various harmful microorganisms and pathogens. Various studies have found that there are three types of FBDs: enteric,

parasitic, and chemical [5]. The major FBD in children is diarrhea, caused mainly by contaminated food. The potential underlying factors of FBDs among children are those related to behavior, including personal hygiene and poor snacking habits in school. In a previous study, Syahrul et al. suggested that snacking is very popular among schoolchildren and very difficult to change because students need to have food while at school. The results of the study in Surabaya showed that only 4.2% of students did not have a habit of snacking at school. This means that most students do not bring enough food from home [6]. In general, they only bring enough food to be consumed at one time.

The most common causes of FBDs were diarrheal disease agents, particularly Diarrheagenic *Escherichia coli* (DEC). DEC is common in various regions in the world. It depends on the host factor and its environment. *Escherichia coli* (*E. coli*) lives in human intestines and usually does not harm human health (it is a general bacterium). However, few *E. coli* strains obtain virulence genes through genetic horizontal transfer and cause gastroenteritis. DEC is the most important cause of acute gastroenteritis in children. However, until now, DEC-related epidemiology information has been limited [7]. DEC strains can be classified into six groups based on their clinical, epidemiological, and virulence properties: Enterohemorrhagic *E. coli* (EHEC), Enteropathogenic *E. coli* (EPEC), Enteroaggregative *E. coli* (EAEC), Enteroinvasive *E. coli* (EIEC), Diffusely adherent *E. coli* (DAEC), and Enterotoxigenic *E. coli* (ETEC) [8,9]. *E. coli* (Gram-negative bacteria) in the urinary tract are the most common cause of Urinary Tract Infections (UTIs), in both the community and nosocomial with *E. coli* being considered the main etiological agent. UTIs are infections of global concern [10,11].

Diarrhea caused by DEC infection remains a major public health issue, especially among children in developing countries [12]. Several research results show that annual diarrhea cases in children are quite high (3.2–4.6 episode), with the cause being contaminated food 70% of the time. However, the number of cases of FBD is under-reported [13].

In 2015, the incidence of diarrhea (a type of FBD) in all ages in Indonesia was 270 per 1000 population [14]. Studies conducted in several cities in Indonesia have found that more than 90% of FBDs were caused by microbiological contamination, including typhoid fever, bacterial/amoebic dysentery, botulism, and intoxication by other bacteria such as *listeriosis* and *trichinellosis* [15]. In 2015, in Sidoarjo, East Java Province, a study discovered that most sausages sold in the school environment contained *E. coli* and *Salmonella*. The same study also found that most rolled noodles also contained *E. coli*, making it unsafe for consumption [16].

Bacterial infection is one of the most important factors causing morbidity and mortality among infectious diseases, including *E. coli*, which is a Gram-negative bacteria. Several strains of *E. coli* live in human intestines and rarely cause diseases, but there are a number of *E. coli* strain pathogens that can cause diarrhea or extraintestinal diseases, in both healthy individuals and those whose immune system is disrupted. Various subtypes of Enterovirulent *E. coli* (EEC) strains are the main causes of diarrheal disease [17]. *E. coli* is a currently known pathotype, which is collectively known as Diarrheagenic *E. coli* (DEC). The pathotypes of DEC differ with respect to preferential host colonization location, virulence mechanism, and clinical symptoms and subsequent consequences, and are classified as EPEC, EHEC/STEC, EAEC, ETEC, and EIEC [12]. Several EPEC strains (atypical EPEC) are commonly found in animals. Interestingly some of these strains have been discovered related to diarrheal diseases in human (i.e., O26, O103, O119, O128, O142, and O157). Serotyping, multilocus sequence typing (MLST), and pulsed field gel electrophoresis (PFGE) have been proven effective to demonstrate that domestic animals (i.e., cat and dog), cattle (cow, sheep, and rabbit), and wild animals (monkey) as well as the environment are the potential sources of aEPEC transmission to human. These animals are the reservoir of atypical EPEC and serve as a source of human infection. Humans also have the potential to be EPEC reservoirs and could infect their domesticated animals. The transmission dynamic between reservoirs, however, remains unclear. In addition to this, food including raw meat, pasteurized milk, vegetables, and unsterilized water has also been reported to be able to transmit aEPEC to human [12,18]. Besides these wild animals, wild boar can act as carriers for various strains of pathogenic and anti-microbial resistant *E. coli*. The spread of these pathogenic and antimicrobial



resistant *E. coli* to humans is probably due to the contact of these animals with domestic animals in extensive or semi-extensive livestock areas [19]. Thus, a collaborative One Health approach is urgently required to achieve optimal health outcomes for humans, animals, and the environment. Regarding this, Osawa et al. (2013) conducted a study using the microbial culture method to investigate the presence of DEC agents in both diarrhea-suspected children and non-diarrhea-suspected children in Surabaya, East Java Province, Indonesia [20]. Through this study, they confirmed the presence of DEC agents in both groups. Shiga toxin-producing *E. coli* (STEC), EPEC, EAEC, and EIEC were found in the non-suspect group, while EPEC, EAEC, ETEC, and EIEC were detected in the suspect group.

Imdad et al. confirmed that DEC agents are the main pathogens that cause diarrhea-related morbidity and mortality among infants and children [7]; however, little is known regarding DEC prediction models using stool by employing FBD transmission media variables. Therefore, this study aimed to establish a DEC prediction model through the stool culture method among elementary school-aged children in the city of Surabaya. This study will be useful in informing relevant stakeholders on how to predict DEC presence among children and how to develop effective health promotion measures in the context of elementary school-aged children, not only in Surabaya, but also in other cities of Indonesia.

## 2. Materials and Methods

### 2.1. Study Design

This study adopted an observational analytic approach and had a nested case-control design. It was conducted across state elementary schools in two sub-districts, Sawahan and Semampir, in Surabaya City. The site selection was based on the diarrhea case data of elementary school-aged children (6–12 years old) from the Health Office of Surabaya City. Two elementary schools were selected from each sub-district; thus, there were four schools in total. The data were collected over eight months (from December 2016 to July 2017) and have been validated.

### 2.2. Participants

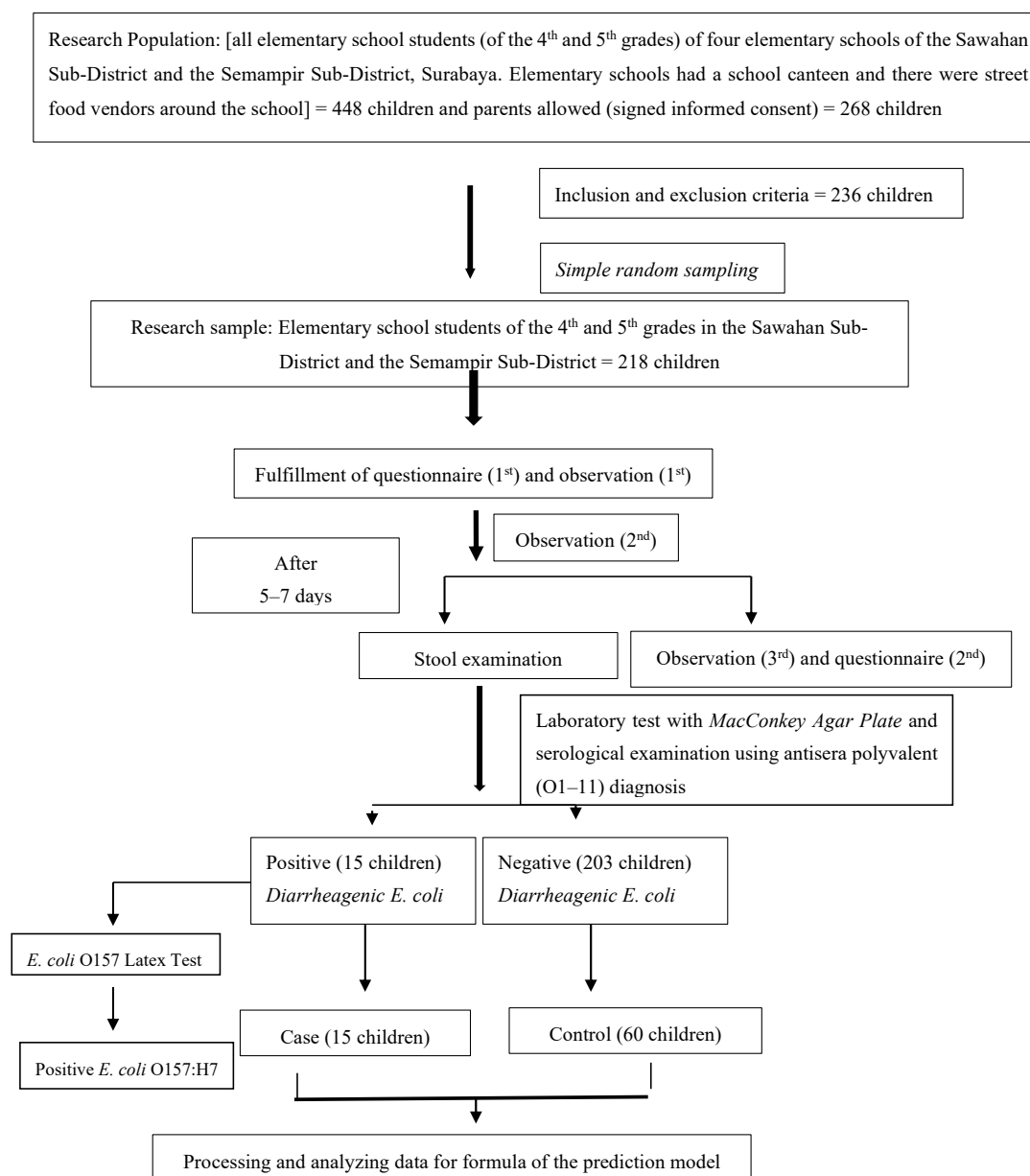
In Stage I, the research population of the cohort group was all children of the chosen state elementary school, with the criteria that the school had a canteen and food/drink street vendors around the school. This study applied inclusion and exclusion criteria to ensure that the samples were relevant to the objective of the study.

Inclusion criteria were: (a) during data collection, the children were from the fourth and fifth grades because, during this age, children start cultivating snacking habits in school and start to rarely bring lunch from home [21,22]; (b) the children's residential addresses were in the same sub-district as their school so that the condition of the food/drink offered by the street vendors around the residence and school would be relatively the same; and (c) the parents of the children agreed to sign an informed consent form.

Exclusion criteria were: (a) the nutritional status of the children was very thin or thin (nutritional status was measured using anthropometry method with IMT/U index); (b) drank yogurt and/or fermented milk in the last seven days before data collection, with at least four servings, as yogurt and fermented milk contain probiotic bacteria (such as *Lactobacillus*), which can increase the immune response of the digestive tract and maintains body health [23], and the period was taken as seven days because the period needed for food to enter the esophagus and reach the rectum is 3–7 days [24]; and (c) the children were consuming antibiotic medication.

In the second stage, the result (outcome) of the related variable measurement in the first stage had two conditions, which were children identified as having DEC and children identified as not having DEC in their stools. Therefore, in the second stage, the children who were identified as being positive for the presence of DEC in their stools were the case sample, while children who were identified as

being negative for the presence of DEC in their stools were the control sample. The flow of the research process can be seen in Figure 1.



**Figure 1.** Flow of the research process.

### 2.3. Research Question

Can the transmission media of FBDs be used as an index prediction for DEC?

### 2.4. Research Variable and Data Collection

The dependent variable was the presence of DEC as an outcome. Meanwhile, the exposure variables were handwashing habits, fingernail hygiene, snacking frequencies at school, snacking frequencies at home, bringing lunch to school, type of food/beverage consumed, food risk classification, and snacking location. The Potential Confounding Variables (PCVs) in this research were nutritional status, antibiotic usage, and yogurt and/or fermented milk consumption (containing probiotics). The PCVs were controlled by performing restrictions.

The data collection and DEC presence measurement method in stool were performed by providing plastic pots for the children, including equipment to contain the stool during defecation at home. Each pot was given a code and labeled with the child's name to minimize the possibility of being exchanged with other children's stool samples. Laboratory tests were conducted on the stool samples to identify the presence of DEC, which were obtained by using the MacConkey agar media method and followed by a serological examination using an O1–11 polyvalent (Bio Farma Bandung, Indonesia) antisera diagnosis. *E. coli* O157:H7 was detected using an *E. coli* O157 Latex Test (Oxoid brand). The laboratory test was conducted in the microbiology laboratory of the Institute of Tropical Disease (ITD) of Universitas Airlangga. Other variables were measured using questionnaires fulfilled by the children, accompanied by enumeration and observation.

In this research, a possible bias that might have occurred is the contamination of *E. coli* in food/beverages during the material supply and production process. Therefore, the conditions of the food and beverages identified in this study were food/beverages that were circulating around the consumers and not during the process of supplying the materials and production. The study was conducted at state elementary schools in urban areas only; thus, there is a possibility that the results would differ from a similar study conducted on state elementary schools in rural areas.

Prior to the data collection activities of four elementary schools, permission was obtained from the National Unity, Politics and Community Protection Agency of Surabaya City, and the District Education Office with a cover letter from the Faculty of Public Health, Universitas Airlangga for an ethical clearance of the study. The ethical clearance approval was obtained from the Ethics Commission of the Faculty of Public Health, Universitas Airlangga, with Eligibility Certificate No. 627-KEPK.

### 2.5. Sample Size

In the first stage, the sample size used the large sample formula from Lemeshow et al. (1990) for a case-control study and corrected with a prevalence rate of 6.9% [6]. Through the calculation of the pathogenic bacteria prevalence as 6.9%, the sample size for the first stage was  $15/6.9\% = 217.39 \approx 218$  children. The sample size for the second stage was 1:4 for case-control; thus, there were 15 cases and 60 controls.

In the second stage, the sampling method for control cases was the following: (1) case sample was devised by including all children with positive laboratory test results for DEC, which was as many as 15 children; and (2) control samples were selected using simple random sampling from all children with negative laboratory test results of DEC, which were as many as 60 children (case sample:control sample comparison was 1:4). The control sample specimens were selected randomly but were from children at the same school as the case samples.

### 2.6. Statistical Analysis

For the formulation of a prediction model for the presence of DEC in stool through the transmission media of FBDs, the binomial logistic regression model was used, with a significance level of 0.05. The prediction model was formulated in the form of mathematical formulas.

## 3. Results

### 3.1. Characteristics of the Children

The results of the first phase of research show that the average age range was 8–13 years. The complete results can be seen in Table 1.

**Table 1.** Distribution of age and sex of the students in Surabaya, 2017.

Characteristics	<i>n</i>	%
Age (years)		
8–9	17	7.8
10–11	189	86.7
12–13	12	5.5
Total	218	100.0
Sex		
Boys	84	38.5
Girls	134	61.5
Total	218	100.0

### 3.2. Proportion Rate of DEC in Children

The result of the laboratory test showed that the proportion rate of DEC in children was 6.88% (15 children from 218) and the proportion rate of *E. coli* O157:H7 in children was only 0.46%.

The result of the total plate count (TPC) in children's stool that had tested positive for DEC was from  $11 \times 10^4$ /mL to  $132 \times 10^4$ /mL. For children who had tested positive for *E. coli* O157:H7, the TPC was  $110 \times 10^4$ /mL. The infectious dose of DEC was very low with 1–10 bacteria for *E. coli* O157:H7 and 10–100 for bacteria other than *E. coli* O157:H7 [25–27].

Children who were detected as being positive of having DEC qualified as the case sample for the second stage, while as many as 60 children who had tested negative for DEC were selected through random sampling to become the control sample.

### 3.3. Fingernail Hygiene

The results show the conditions of the fingernails of the children in the case group. Most of them had poor fingernail hygiene (60.0%), while children in the control group mostly had good fingernail conditions, that is, their nails were kept short and clean. The complete results can be seen in Table 2.

**Table 2.** Distribution of the fingernail conditions of the students based on the presence of DEC in stool, in Surabaya, 2017.

Fingernail Conditions	Positive DEC		Negative DEC	
	<i>n</i>	%	<i>n</i>	%
Poor	9	60.0	21	35.0
Good *	6	40.0	39	65.0
Total	15	100.0	60	100.0

\* Good = clean and short.

### 3.4. Handwashing Habits at School

The results show the handwashing habits practiced at school; most of the children in the case and control groups had poor handwashing habits at school. The complete results can be seen in Table 3.

**Table 3.** Distribution of handwashing habits at school based on the presence of DEC in stool, in Surabaya, 2017.

Handwashing Habits at School	Positive DEC		Negative DEC	
	<i>n</i>	%	<i>n</i>	%
Poor	7	46.7	31	51.7
Medium	5	33.3	23	38.3
Good	3	20.0	6	10.0
Total	15	100.0	60	100.0

### 3.5. The Habit of Consuming Snacks at School

The habit of consuming snacks at school included the habit of bringing lunch from home, the snacking frequency at school, risk classification of the food that was often purchased at school, and snack location.

### 3.6. The Habit of Bringing Lunch from Home

The results show that the majority of children in the case group (46.7%) were in the habit of bringing lunch to school, and, in the control group, 70.0% stated that they sometimes packed lunch for school. The complete results can be seen in Table 4.

**Table 4.** Distribution of children who had the habit of bringing lunch from home based on the presence of DEC in their stool, in Surabaya, 2017.

The Habit of Bringing Lunch from Home	Positive DEC		Negative DEC	
	<i>n</i>	%	<i>n</i>	%
Never	5	33.3	15	25.0
1–3 times/week	7	46.7	42	70.0
≥4 times/week	3	20.0	3	5.0
Total	15	100.0	60	100.0

### 3.7. Snacking Frequency at School

The results show that most children (66.7%) who tested positive for DEC in their stool had a snacking frequency of ≥4 times/week. Meanwhile, children who tested negative for DEC (66.7%) had a snacking frequency of mostly 1–3 times/week. The complete results can be seen in Table 5.

**Table 5.** Distribution of children's snacking frequency based on the presence of DEC in their stool, in Surabaya, 2017.

Snacking Frequency	Positive DEC		Negative DEC	
	<i>n</i>	%	<i>n</i>	%
At school				
≥4 times/week	10	66.7	20	33.3
1–3 times/week	5	33.3	40	66.7
Total	15	100.0	60	100.0

### 3.8. Snacking Location

The snacking locations at school were street food stalls, stalls of food sellers outside the school, and the canteen inside the school. Meanwhile, the snacking locations at home were street food stalls, food shops near the house, restaurants, and mini-markets.

### 3.9. Food Risk Classification

The food and/or beverages assessed were those that were often bought by children at school and those that were bought during the questionnaire fulfillment and observation. Food and beverages categorized as high risk were food and beverages that have a high potential of being contaminated by the *E. coli* bacteria (Table 6).

**Table 6.** Food Risk Classification based on Contamination Risk by *E. coli* bacteria, in Surabaya, 2017.

Category of Risk	Food	Beverage
Low Risk	<ul style="list-style-type: none"> <li>• Packaged snacksh</li> <li>• Food that was packaged by the producer (e.g., bread, donut, chips)</li> <li>• Main food (e.g., fried rice, yellow rice, rice with fried chicken, and others)</li> </ul>	<ul style="list-style-type: none"> <li>• Bottled beverages</li> <li>• Warm beverages</li> </ul>
High Risk	<ul style="list-style-type: none"> <li>• Food with peanut sauce, <i>petis</i>, or other types of sauce (e.g., <i>cilok</i>, <i>cireng</i>, meatball, <i>batagor</i> seasoning, meatball sauce, and others).</li> </ul>	<ul style="list-style-type: none"> <li>• Cold beverages (iced tea, coconut ice, syrup ice, etc.)</li> </ul>

Source: [15,28].

The results indicate that there were many children who bought food and/or beverages with a high risk of being contaminated with *E. Coli* (Table 7).

**Table 7.** Distribution of food risk classification in school based on DEC in stools, in Surabaya, 2017.

Food Risk Classification	Positive DEC		Negative DEC	
	<i>n</i>	%	<i>n</i>	%
FOOD				
High risk	10	66.7	21	35.0
Low risk	5	33.3	39	65.0
Total	15	100.0	60	100.0
BEVERAGE				
High risk	9	60.0	18	30.0
Low risk	6	40.0	42	70.0
Total	15	100.0	60	100.0

### 3.10. Formulation of the Prediction Model for the Presence of DEC Bacteria in Stool through Transmission Media in Children

The results of the logistic regression analysis demonstrate that only the snacking frequency variable and the snacking condition can be included in the prediction model formulation (Table 8).

**Table 8.** Results of the logistic regression analysis.

Variable	B	df	Sig	OR	95% CI	
					Lower	Upper
Snacking Frequency at School ( $\geq 4$ times/week)	1.502	1	0.019	4.492	1.278	15.787
Food Risk Classification (high risk)	1.307	1	0.039	3.696	1.071	12.758

Probability formulation obtained is as follows:

$$Prob (Y = 1) = \frac{1}{1 + e^{-(-2.734 + 1.502 X1 + 1.307 X2)}} \quad (1)$$

where X1 is the snacking frequency (code 1 =  $\geq 4$  times/week) and X2 is the food risk classification (Code 1 = high risk). A goodness of fit score of 0.659 means that the model produced is fit.

Table 9 presents the simulation result of probability formulation.

**Table 9.** Probability of stool being DEC positive.

Snack Frequency	Food Risk Classification	Probability
(1) $\geq$ 4 times/week	(1) high risk	51.88%
(1) $\geq$ 4 times/week	(0) low risk	22.58%
(0) $<$ 4 times/week	(1) high risk	19.36%
(0) $<$ 4 times/week	(0) low risk	6.09%

### 3.11. Limitations of the Study

The food and beverages identified as being likely to be contaminated with DEC are the food and beverages sold in schools and around schools, and the condition of these from their time of production and the materials used in its production was not checked.

## 4. Discussion

*E. coli* is an opportunistic pathogen. When it is in a certain place of the human body, it can cause health problems ranging from mild stomach pain to diarrhea, UTIs, sepsis, and meningitis [29]. *E. coli* is the main cause of UTIs, and uncomplicated UTI infection is mostly caused by *E. coli* [30,31]. This study found DEC in children's stool. According to theory, the bacteria found can be classified as EPEC, which is a bacterium that often causes diarrhea in infants. ETEC is a bacterium responsible for diarrhea in infants and travelers, while EHEC is a bacterium associated with hemorrhagic colitis and hemolytic uremic syndromes. EIEC is a bacterium that causes shigellosis, and EAEC is a bacterium that causes acute diarrhea and chronic diarrhea [29,32]. One strain of DEC that has high virulence is *E. coli* O157:H7, which once caused an outbreak in the United States [29]. The identification of DEC, especially EHEC, was conducted using a MacConkey agar plate, followed by a serological examination using polyvalent diagnostic antisera.

The proportion of children who tested positive for the presence of DEC in their stools was 6.88%, while the proportion of children who tested positive for *E. coli* O157: H7 in their stool was only 0.46%. DEC bacteria are one of the causes of FBDs, including diarrhea. Indeed, although the proportions are small, the virulence level of the DEC bacteria is quite high. In certain strains, such as EHEC and EAEC, it can cause hemolytic uremia syndrome, kidney failure, meningitis, and bacteremia [33]. The proportion of 6.88% found in this study is lower than the one in the study conducted by Nakasone et al. who calculated that the prevalence of DEC in primary school-aged children in Surabaya in 1995 was 11.6%. By looking at these two numbers, it can be stated that the positive presence of DEC in the stool of school-aged children of 12 years has decreased, but it has taken quite a long time (from 1995 to 2017). In the study conducted by Nakasone et al. in 1995, the prevalence rate found was also known as the carrier rate.

DEC is one of the agents of FBDs. The reduction of FBD cases is one of the main objectives of national and international food safety programs [34]. Variables that can be used to predict the presence of DEC in children's stool are children's snacking frequency at school and the condition of snacks bought at school. The prediction model for DEC, created using the knowledge of the various transmission media of DEC in elementary school-aged children and in the form of mathematical formulas, can be used to predict the presence of DEC in children by observing the frequency of their snacking and the risk classification of food that is often bought at school.

The frequency of having snacks at school is one of the variables that can be used to predict the presence of DEC in schoolchildren's stool. This is in accordance with one of the causal relationship theories, namely, the dose–response relationship, in which the higher is the dose of exposure, the greater is the chance of an outcome. In this study, the greater is the snacking frequency of a child at school, the greater is chance of the child having DEC in their stools. A child whose snacking frequency is four times per week has a higher chance of consuming food and/or beverages snacks contaminated

with microbes, especially *E. coli*. The results of the identification of food and drink snacks show that, in all locations selling snacks in all schools, there were foods and beverages that could have been contaminated with *E. coli*.

The variable of risk classification of food that is bought at school has an OR value of 3.696 with a value of 95% CI:  $1.071 < OR < 12.758$ , which means that the risk of stool being detected DEC-positive is 3.696 times greater for children who often buy snacks with a higher risk than children who buy low-risk snacks. Here, snacks mean food and/or beverages bought by children at school. Food and beverages are categorized as high risk if they have a high chance of being contaminated by microbes, especially *E. coli* bacteria. It is well known that *E. coli* is often present in meat that has not been cooked properly, drinking water that has not been purified properly, or food that has been cross-contaminated from food handlers. The results of the analytic studies in the foodservice units at schools conclude that washing and food safety by food handlers had not been properly addressed [35]. Handling food (from production to storage) that is not safe can contribute to the risk of getting FBDs [36,37]. Therefore, it is necessary to increase the knowledge and awareness of schoolchildren regarding FBD risks for long-term prevention. In addition, the government must conduct active monitoring and training on food security and FBDs [38].

Poor handwashing in schools is actually a risk factor for the presence of DEC bacteria in children's stools. In this study, children's handwashing habit has not been taken as a predictor variable for the presence of DEC bacteria in children's stool. All snacks sold around the school were accepted by children with individual packaging, both individually packaged since its production and when snacks were given to children. Individual packaging material included brown oiled paper, white paper, plastic wrapping, mica, and stick skewers. In one of the school canteens, snacks were being served in an open condition, so they could have been easily polluted by dust and flies. On the table where the food was served, pieces of brown oil paper were provided to cover the base when the child took the food. Therefore, handwashing habits were not related to the presence of DEC in children's stools, as the child's hands were not in direct contact with the snacks.

This study uses the concept of a healthy paradigm. The resulting prediction model is able to estimate the presence of DEC in stools, before a child has diarrhea, which is included in FBDs. Therefore, it is expected that a child is prevented from being at risk of developing diarrhea due to DEC or can be said to minimize the risk factors for diarrhea in children. DEC not only causes diarrhea but can also attack parts of the body outside the digestive tract. The results of the study show that, even though most children brought packed lunch, they still bought food and/or drinks during the school break or after school.

The prediction model for the presence of DEC in stools through transmission media, namely, the frequency of snacks at school and the conditions of snacks that are often bought at this school, can be used as an "early warning" so that children can avoid getting FBDs. That is, it can reduce the number of FBDs, especially diarrhea in children who have a habit of snacking at school.

## 5. Conclusions

Most children who were DEC-positive bought snacks that were classified as high-risk food and beverages, while most children who were DEC-negative bought snacks that were classified as being low-risk food and beverages. The decisions of schoolchildren in choosing and buying food and beverages were not based on their quality and safety.

In conditions of moderate and poor handwashing behavior, the variables that can be used to predict the presence of DEC bacteria in children's stool are the snacking frequency at school and the conditions of snacks bought at school.

This study recommends the following:

1. Schools should have the capacity to form or reactivate the School Food Safety Team (TKP) so that they can ensure that the food and beverages sold in the canteen and around the school are safe to consume.



2. Attention should be paid to children's high frequency of snacking at school; it is recommended that parents try to prepare lunches for children to bring to school.
3. There is a need for guiding food vendors, including canteen managers, on maintaining the safety of food and beverage conditions, as well as paying attention to individual packaging material for snacks.
4. The prediction model for the presence of DEC bacteria in children's stools can be used as an "early warning" for the occurrence of FBDs in elementary schoolchildren.
5. Further research is needed to ascertain the dynamics of transmission between reservoirs (humans and animals), in line with the goals of One World One Health.

**Author Contributions:** Conceptualization, F.S., C.U.W., E.B.W., and H.B.N.; methodology, F.S., C.U.W., H.B.N., and E.B.W.; resources, E.B.W. and A.C.A.; data management, F.S.; formal analysis, F.S. and H.B.N.; investigation, F.S.; writing—original draft preparation, F.S. and F.D.; writing—revision and editing, F.S., A.C.A., H.B.N., and F.D.; visualization, F.S. and F.D.; and supervision, C.U.W., E.B.W., and H.B.N.N. All authors have read and agreed to the published version of the manuscript.

**Funding:** The financial support from the Director of Research and Community Service, Deputy in the Field of Strengthening Research and Development in the Ministry of Research and Technology/National Research and Innovation, Republic of Indonesia is also appreciated.

**Acknowledgments:** The authors appreciate the support of their supervisors, Chatarina U.W., Eddy Bagus W. and Hari Basuki, and of their family, Annis Catur Adi, Bitta, Rissa, and Tisha.

**Conflicts of Interest:** The authors declare no conflict of interest.

## References

1. Wang, L.; Xu, Y.; Wang, Y.; Dong, S.; Cao, Z.; Zhou, W.; Sun, H.; Huo, D.; Zhang, H.; Sun, Y.; et al. The Epidemiological Investigation and Intelligent Analytical System for foodborne disease. *Food Control*. **2010**, *21*, 1466–1471. [[CrossRef](#)]
2. Torgerson, P.R.; de Silva, N.R.; Fèvre, E.M.; Kasuga, F.; Rokni, M.B.; Zhou, X.-N.; Sripan, B.; Gargouri, N.; Willingham, A.L.; Stein, C. The global burden of foodborne parasitic diseases: An update. *Trends Parasitol.* **2014**, *30*, 20–26. [[CrossRef](#)]
3. Kirk, M.D.; Pires, S.M.; Black, R.E.; Caipo, M.; Crump, J.A.; Devleeschauwer, B.; Döpfer, D.; Fazil, A.; Fischer-Walker, C.L.; Hald, T.; et al. World Health Organization Estimates of the Global and Regional Disease Burden of 22 Foodborne Bacterial, Protozoal, and Viral Diseases, 2010: A Data Synthesis. *PLoS Med.* **2015**, *12*, 1–21.
4. World Health Organization. *WHO Estimates of the Global Burden of Foodborne Diseases*; World Health Organization: Geneva, Switzerland, 2015; ISBN 978-92-4-156516-5.
5. Haagsma, J.A.; Polinder, S.; Stein, C.E.; Havelaar, A.H. Systematic review of foodborne burden of disease studies: Quality assessment of data and methodology. *Int. J. Food Microbiol.* **2013**, *166*, 34–47. [[CrossRef](#)]
6. Syahrul, F.; Isfandiari, M.A. *Analisis E. coli (O157:H7) Pada Feses dan Makanan Jajanan Berdasarkan Kebiasaan Cuci Tangan dan Kebiasaan Jajan di Sekolah (Studi di SD Negeri di Kecamatan Wonokromo Surabaya)*; Universitas Airlangga: Kota Surabaya, Indonesia, 2015.
7. Imdad, A.; Foster, M.A.; Iqbal, J.; Fonnesebeck, C.; Payne, D.C.; Zhang, C.; Chappell, J.D.; Halasa, N.; Gómez-Duarte, O.G. Diarrheagenic *Escherichia coli* and Acute Gastroenteritis in Children in Davidson County, Tennessee, United States: A Case-control Study. *Pediatr. Infect. Dis. J.* **2018**, *37*, 543–548. [[CrossRef](#)] [[PubMed](#)]
8. Yingst, S.L.; Magdi, D.S.; Stephen, A.F. Classifying *Escherichia coli*. *Emerg. Infect. Dis.* **2006**, *2*, 1297–1299.
9. Spano, L.C.; da Cunha, K.F.; Monfardini, M.V.; de Cássia Bergamaschi Fonseca, R.; Scaletsky, I.C.A. High prevalence of diarrheagenic *Escherichia coli* carrying toxin-encoding genes isolated from children and adults in southeastern Brazil. *BMC Infect. Dis.* **2017**, *17*, 773–782. [[CrossRef](#)] [[PubMed](#)]
10. Gajdacs, M.; Batori, Z.; Ábrók, M.; Lázár, A.; Burián, K. Characterization of Resistance in Gram-Negative Urinary Isolates Using Existing and Novel Indicators of Clinical Relevance: A 10-Year Data Analysis. *Life* **2020**, *10*, 16. [[CrossRef](#)] [[PubMed](#)]
11. Behzadi, P.; Urbán, E.; Gajdacs, M. Association between Biofilm-Production and Antibiotic Resistance in Uropathogenic *Escherichia coli* (UPEC): An In Vitro Study. *Diseases* **2020**, *8*, 17. [[CrossRef](#)] [[PubMed](#)]

12. Gomes, T.A.T.; Elias, W.P.; Scaletsky, I.C.A.; Guth, B.E.C.; Rodrigues, J.F.; Piazza, R.M.F.; Ferreira, L.C.S.; Martinez, M.B. Diarrheagenic *Escherichia coli*. *Braz. J. Microbiol.* **2016**, *47*, 3–30. [[CrossRef](#)]
13. Mensah, P. *Food-Borne Diseases Surveillance and Monitoring in Food Control*; World Health Organization: Geneva, Switzerland, 2002.
14. Kementerian Kesehatan Republik Indonesia. *Profil Kesehatan Indonesia Tahun 2018*; Kementerian Kesehatan Republik Indonesia: Jakarta, Indonesia, 2019.
15. Winarno, F.G. *Keamanan Pangan*; M-Brio Press: Bogor, Indonesia, 2004; ISBN 978-978-30986-1-9.
16. Riolita, R.R.; Ismawati, R. Study of Hygiene's Food Handle at Elementary School Sidoarjo. *E J. Boga* **2015**, *4*, 76–79.
17. Gajdács, M.; Ábrók, M.; Lázár, A.; Burián, K. Differential epidemiology and antibiotic resistance of lactose-fermenting and non-fermenting *Escherichia coli*: Is it just a matter of taste? *Biol. Futur.* **2020**, *71*, 175–182. [[CrossRef](#)]
18. Moura, R.A.; Sircili, M.P.; Leomil, L.; Matté, M.H.; Trabulsi, L.R.; Elias, W.P.; Irino, K.; Pestana de Castro, A.F. Clonal Relationship among Atypical Enteropathogenic *Escherichia coli* Strains Isolated from Different Animal Species and Humans. *AEM* **2009**, *75*, 7399–7408. [[CrossRef](#)] [[PubMed](#)]
19. Bertelloni, F.; Cilia, G.; Bogi, S.; Ebani, V.V.; Turini, L.; Nuvoloni, R.; Cerri, D.; Fratini, F.; Turchi, B. Pathotypes and Antimicrobial Susceptibility of *Escherichia coli* Isolated from Wild Boar (*Sus scrofa*) in Tuscany. *Animals* **2020**, *10*, 744. [[CrossRef](#)]
20. Osawa, K.; Raharjo, D.; Wasito, E.B.; Harijono, S.; Shigemura, K.; Osawa, R.; Sudarmo, S.M.; Iijima, Y.; Shirakawa, T. Frequency of Dherrheagenic *Escherichia coli* among Children in Surabaya, Indonesia. *Jpn. J. Infect. Dis* **2013**, *66*, 446–448. [[CrossRef](#)]
21. Syam, A.; Indriasari, R.; Ibnu, I. Gambaran Pengetahuan dan Sikap Siswa terhadap Makanan Jajanan Sebelum dan Setelah Pemberian Edukasi Kartu Kwartet Pada Anak Usia Sekolah Dasar di Kota Makassar. *J. Tepat* **2018**, *1*, 127–136.
22. Noviani, K.; Afifah, E.; Astiti, D.A. Snacking habits and diet with nutritional status of elementary school children in SD Sonosewu Bantul Yogyakarta. *IJND* **2016**, *4*, 97. [[CrossRef](#)]
23. Bron, P.A.; van Baarlen, P.; Kleerebezem, M. Emerging molecular insights into the interaction between probiotics and the host intestinal mucosa. *Nat. Rev. Microbiol.* **2012**, *10*, 66–78. [[CrossRef](#)] [[PubMed](#)]
24. Barrett, K.E.; Ganong, W.F. *Ganong's Review of Medical Physiology*; McGraw-Hill Medical: New York, NY, USA, 2010; ISBN 978-0-07-160568-7.
25. Schmid-Hempel, P.; Frank, S.A. Pathogenesis, Virulence, and Infective Dose. *PLoS Pathog.* **2007**, *3*, e147. [[CrossRef](#)]
26. Rahal, E.A.; Matar, G.M.; Kazzi, N.; Nassar, F.J. *Escherichia coli* O157:H7—Clinical aspects and novel treatment approaches. *Front. Cell. Infect. Microbiol.* **2012**, *2*, 1–7. [[CrossRef](#)]
27. Leggett, H.C.; Cornwallis, C.K.; West, S.A. Mechanisms of Pathogenesis, Infective Dose and Virulence in Human Parasites. *PLoS Pathog.* **2012**, *8*, e1002512. [[CrossRef](#)]
28. Government of South Australia. *Australian Food Business Risk Classification*; Government of South Australia: Adelaide, Australia, 2018.
29. Leboffe, M.J.; Pierce, B.E. *A Photographic Atlas for the Microbiology Laboratory*; Morton Publishing Company: Englewood, CO, USA, 2011; ISBN 978-0-89582-872-9.
30. Wiedemann, B.; Heisig, A.; Heisig, P. Uncomplicated Urinary Tract Infections and Antibiotic Resistance—Epidemiological and Mechanistic Aspects. *Antibiotics* **2014**, *3*, 341–352. [[CrossRef](#)]
31. Stefaniuk, E.; Suchocka, U.; Bosacka, K.; Hryniewicz, W. Etiology and antibiotic susceptibility of bacterial pathogens responsible for community-acquired urinary tract infections in Poland. *Eur. J. Clin. Microbiol. Infect. Dis.* **2016**, *35*, 1363–1369. [[CrossRef](#)] [[PubMed](#)]
32. Nataro, J.P.; Kaper, J.B. Diarrheagenic *Escherichia coli*. *Clin. Microbiol. Rev.* **1998**, *11*, 142–201. [[CrossRef](#)]
33. Iowa State University Center for Food Security and Public Health. *Enterohemorrhagic Escherichia coli and Other E. coli Causing Hemolytic Uremic Syndrome*; Center for Food Security and Public Health Technical Factsheets: Tularemia, IA, USA, 2016; p. 61.
34. Azevedo, I.; Albano, H.; Silva, J.; Teixeira, P. Food safety in the domestic environment. *Food Control.* **2014**, *37*, 272–276. [[CrossRef](#)]
35. Liz Martins, M.; Rocha, A. Evaluation of prerequisite programs implementation at schools foodservice. *Food Control.* **2014**, *39*, 30–33. [[CrossRef](#)]

36. Leclair, R.M.; McLean, S.K.; Dunn, L.A.; Meyer, D.; Palombo, E.A. Investigating the Effects of Time and Temperature on the Growth of *Escherichia coli* O157:H7 and *Listeria monocytogenes* in Raw Cow's Milk Based on Simulated Consumer Food Handling Practices. *IJERPH* **2019**, *16*, 2691. [[CrossRef](#)]
37. Doza, S.; Jabeen Rahman, M.; Islam, M.A.; Kwong, L.H.; Unicomb, L.; Ercumen, A.; Pickering, A.J.; Parvez, S.M.; Naser, A.M.; Ashraf, S.; et al. Prevalence and Association of *Escherichia coli* and Diarrheagenic *Escherichia coli* in Stored Foods for Young Children and Flies Caught in the Same Households in Rural Bangladesh. *Am. J. Trop. Med. Hyg.* **2018**, *98*, 1031–1038. [[CrossRef](#)]
38. Shan, L.; Wang, S.; Wu, L.; Tsai, F.-S. Cognitive Biases of Consumers' Risk Perception of Foodborne Diseases in China: Examining Anchoring Effect. *IJERPH* **2019**, *16*, 2268. [[CrossRef](#)]

**Publisher's Note:** MDPI stays neutral with regard to jurisdictional claims in published maps and institutional affiliations.



© 2020 by the authors. Licensee MDPI, Basel, Switzerland. This article is an open access article distributed under the terms and conditions of the Creative Commons Attribution (CC BY) license (<http://creativecommons.org/licenses/by/4.0/>).