

This site uses cookies. By continuing to use this site you agree to our use of cookies. To find out more, see our Privacy and Cookies policy.



*NOTICE*: Due to essential maintenance there will be a brief interruption to service.

## Table of contents

Volume 236

2019

◀ Previous issue      Next issue ▶

**The 1st International Conference on Fisheries and Marine Science 6 October 2018, East Java, Indonesia**

Accepted papers received: 16 January 2019

Published online: 01 March 2019

Open all abstracts

### Preface

OPEN ACCESS

011001

The 1st International Conference on Fisheries and Marine Science

— Close abstract       View article       PDF

### Preface

It is such great a pleasure for me to welcome all of you on behalf of the Faculty of Fisheries and Marine Universitas Airlangga, for the first international conference on fisheries and marine science.

**The 1<sup>st</sup> International Conference on Fisheries and Marine Science (InCoFiMS)** is the first initiated international conference held by the Faculty of Fisheries and Marine, which beforehand was held in the National Level. This expanded level of this conference with the theme of **"Fisheries and Marine in Supporting Sustainable Development Goals (SDG's) achievement"** is expected to be capable of connecting students, lecturers, researchers, government and professionals from across the world to meet, greet, share and discuss about the potential and best practices in the field of fisheries and marine during the period of focusing on SDG's

The aims of this conference is to develop and improve the goals of Universitas Airlangga to be one of the Top 500 Universities in the world by contribute in improving aquaculture and Fisheries Sustainable sector. And for this conference we also cooperate with Scopus Indexed Publisher In order to assist students, lecturers and researchers in disseminating their findings, to publish selected papers which are expected to help societies to implement the findings in the focus on developing aquaculture and fisheries sustainable.

I strongly hope that all of participants from around the world enjoy the conference in the historical hity of Surabaya, the second biggest city in Indonesia with competitive economic activities for the future of Fisheries and Marine development.

Once again, I am most grateful for your participation and your support. Thank you.

**Dr. Woro Hastuti Satyantini**

**Chief of INCOFIMS**

<https://doi.org/10.1088/1755-1315/236/1/011001>

---

**OPEN ACCESS**

011002

Organizing Committee

**+** Open abstract  View article  PDF

---

**OPEN ACCESS**

011003

Conference Photos

**+** Open abstract  View article  PDF

---

**OPEN ACCESS**

011004

Peer review statement

**-** Close abstract  View article  PDF

All papers published in this volume of *IOP Conference Series: Earth and Environmental Science* have been peer reviewed through processes administered by the proceedings Editors. Reviews were conducted by expert referees to the professional and scientific standards expected of a proceedings journal published by IOP Publishing.

<https://doi.org/10.1088/1755-1315/236/1/011004>

---

## Papers

---

**OPEN ACCESS**

012001

The Increase in  $\beta$ -carotene Content in *Dunaliella salina* from the Application of Different Light Intensities

N Sugiati, E D Masithah, W Tjahjaningsih and A A Abdillah

**+** Open abstract  View article  PDF

---

**OPEN ACCESS**

012002

Ammonia-eliminating potential of *Gracilaria* sp. And zeolite: a preliminary study of the efficient ammonia eliminator in aquatic environment

M R Royan, M H Solim and M B Santanumurti

**+** Open abstract  View article  PDF

- 
- OPEN ACCESS** 012003  
Identification of extracellular enzyme-producing bacteria (proteolytic, cellulolytic, and amylolytic) in the sediment of extensive ponds in Tanggulrejo, Gresik  
OA Artha, Sudarno, H Pramono and LA Sari  
[+](#) Open abstract [View article](#) [PDF](#)
- 
- OPEN ACCESS** 012004  
Addition of water from the treatment pond of pangasius fillet waste (*Pangasius* sp.) with different concentrations in the cultivation medium due to the population growth of *Daphnia* sp.  
H P Alvian, E D Masithah and M H Azhar  
[+](#) Open abstract [View article](#) [PDF](#)
- 
- OPEN ACCESS** 012005  
The growth and survival rate in lettuce aquaponic systems (*Latuca sativa*) of eels in various stocking densities of eel (*Monopterus albus*)  
N K Portalia, L Sulmartiwi and B S Rahardja  
[+](#) Open abstract [View article](#) [PDF](#)
- 
- OPEN ACCESS** 012006  
The prevalence of benedeniasis in humpback grouper (*Cromileptes altivelis*) in floating net cages in Situbondo Regency, East Java, Indonesia  
S O Wijaya, S Subekti and Kismiyati  
[+](#) Open abstract [View article](#) [PDF](#)
- 
- OPEN ACCESS** 012007  
The prevalence of fungi on groupers (*Epinephelus* sp.) in cage mariculture systems of the northern coast of Surabaya, East Java  
E Yuliasuti, R Kusdawarti and Sudarno  
[+](#) Open abstract [View article](#) [PDF](#)
- 
- OPEN ACCESS** 012008  
The spectrum of light and nutrients required to increase the production of phycocyanin *Spirulina platensis*  
H A Wicaksono, W H Satyantini and E D Masithah  
[+](#) Open abstract [View article](#) [PDF](#)
- 
- OPEN ACCESS** 012009  
The growth and survival rate of the larvae of the sunu grouper (*Plectropomus leopardus*) in different temperatures  
L Lutfiyah, D S Budi and M F Ulkhaq  
[+](#) Open abstract [View article](#) [PDF](#)

- 
- OPEN ACCESS** 012010  
Preservation of common carp (*Cyprinus carpio*) sperm using 0.9% NaCl and ringer's lactate solution  
D S Budi, L A Adawiyah and L Lutfiyah  
[+](#) [Open abstract](#) [View article](#) [PDF](#)
- 
- OPEN ACCESS** 012011  
Comparison of the efficiency (flash point, freezing point, and viscosity test) of biodiesels from *Sargassum* sp.  
M B Santanumurti, M R Royan, S H Samara, S Sigit and M A Alamsjah  
[+](#) [Open abstract](#) [View article](#) [PDF](#)
- 
- OPEN ACCESS** 012012  
Study of patterns in the relationship of ecdysis with the age of freshwater crayfish *Cherax quadricarinatus* aged 76 Days  
A H Fasya  
[+](#) [Open abstract](#) [View article](#) [PDF](#)
- 
- OPEN ACCESS** 012013  
Maximum density in the *Moina macrocopa* culture able to produce parthenogenesis in female offspring  
A S Mubarak, D Jusadi, M Z Junior and M A Suprayudi  
[+](#) [Open abstract](#) [View article](#) [PDF](#)
- 
- OPEN ACCESS** 012014  
The oxygen content and dissolved oxygen consumption level of white shrimp *Litopenaeus vannamei* in the nanobubble cultivation system  
D P Galang, A K Ashari, L Sulmantiwi, G Mahasri, Prayogo and LA Sari  
[+](#) [Open abstract](#) [View article](#) [PDF](#)
- 
- OPEN ACCESS** 012015  
The effect of the epiphytes of *Chaetomorpha crassa* on the total chlorophyll-a and growth of *Gracilaria verrucosa*  
A L L Handayani, R J Triastuti and L Sulmantiwi  
[+](#) [Open abstract](#) [View article](#) [PDF](#)
- 
- OPEN ACCESS** 012016  
Growth monitoring of koi fish (*Cyprinus carpio*) in natural hatchery techniques in Umbulan, Pasuruan, East Java  
F P Putri and N N Dewi  
[+](#) [Open abstract](#) [View article](#) [PDF](#)

- 
- OPEN ACCESS** 012017  
Dynamic Ratio Correlation of N:P in relation to the Diatom Abundance in the Intensive System of the Vannamei (*Litopenaeus vannamei*) Shrimp Pond  
E D Masithah, D D Nindarwi, T Rahma and dan R R Satrya P I  
[+](#) Open abstract [View article](#) [PDF](#)
- 
- OPEN ACCESS** 012018  
Dynamic ratio correlation of N:P on the abundance of Bluegreen algae in an intensive system in a white shrimp (*Litopenaeous vannamei*) pond  
E D Masithah, D D Nindarwi, A L A Suyoso and D Husin  
[+](#) Open abstract [View article](#) [PDF](#)
- 
- OPEN ACCESS** 012019  
Dynamic ratio correlation of N:P toward phytoplankton explosions in intensive systems of white shrimp pond  
E D Masithah, D D Nindarwi, D Husin and T Rahma  
[+](#) Open abstract [View article](#) [PDF](#)
- 
- OPEN ACCESS** 012020  
Development of water and nutrient management models to improve multitrophic seafarming productivity  
J A Surbakti, I A L Dewi, M A Alamsjah and M Lamid  
[+](#) Open abstract [View article](#) [PDF](#)
- 
- OPEN ACCESS** 012021  
Pond soil characteristic in reclaimed tidal lowlands and its correlation with the water quality for aquaculture  
M Fitriani, I Wudtisin, M Kaewnern and R H Susanto  
[+](#) Open abstract [View article](#) [PDF](#)
- 
- OPEN ACCESS** 012022  
The dynamics of total organic matter (tom) on sangkuriang catfish (*clarias gariepinus*) farming at upt ptpbp2kp and the effectiveness of freshwater bivalve (*anodonta woodiana*) in reducing the total organic matter with varying density  
D Arfiati, C D G Putra, A H Tullah, S W A Permanasari and A W Puspitasari  
[+](#) Open abstract [View article](#) [PDF](#)
- 
- OPEN ACCESS** 012023  
Growth and morphological changes in relation to the maturation of male Japanese eel, *Anguilla japonica* injected with human chorionic gonadotrophin (HCG) in the different interval in the tropical region  
Y T Hee, F F Ching and S Senoo  
[+](#) Open abstract [View article](#) [PDF](#)

- 
- OPEN ACCESS** 012024  
Genetic diversity of the endangered species *Sphyrna lewini* (Griffith and Smith 1834) in Lombok based on mitochondrial DNA  
S Hadi, N P Angraini, E Muttaqin, B M Simeon, B Subhan and H Madduppa  
[+](#) [Open abstract](#) [View article](#) [PDF](#)
- 
- OPEN ACCESS** 012025  
Sex ratio and size at first maturity of razor clam *Solen* sp. in Pamekasan and Surabaya coastal area, East Java, Indonesia  
N Trisyani, N I Wijaya and I Yuniar  
[+](#) [Open abstract](#) [View article](#) [PDF](#)
- 
- OPEN ACCESS** 012026  
Improving productivity and water quality of catfish, *Clarias* sp. cultured in an aquaponic ebb-tide system using different filtration  
E Setiadi, I Taufik, Y R Widyastuti, I Ardi and D Puspaningsih  
[+](#) [Open abstract](#) [View article](#) [PDF](#)
- 
- OPEN ACCESS** 012027  
Different substrate of trickling filter on growth, survival rate, and water quality of common carp (*Cyprinus carpio*) cultivation by using an intensive recirculation system  
E Setiadi, I Taufik, Y R Widyastuti, I Ardi and A Saputra  
[+](#) [Open abstract](#) [View article](#) [PDF](#)
- 
- OPEN ACCESS** 012028  
Water quality dynamic, production and profitability of catfish, *Clarias* sp. cultured at different design construction of aquaponic  
Y R Widyastuti, E Setiadi, I Taufik and L Setijaningsih  
[+](#) [Open abstract](#) [View article](#) [PDF](#)
- 
- OPEN ACCESS** 012029  
Effect of C:N ratio on the spore production of *Bacillus* sp. indigenous shrimp pond  
A Yuniarti, N B Arifin, M Fakhri and A M Hariati  
[+](#) [Open abstract](#) [View article](#) [PDF](#)
- 
- OPEN ACCESS** 012030  
Comparative Test on Bacteria in the Digestive Tract of Vannamei Shrimp (*Litopenaeus vannamei*) at Intensive and Extensive Ponds in Ujungpangkah, Gresik  
D Ningrum, M Arief and dan K T Pursetyo  
[+](#) [Open abstract](#) [View article](#) [PDF](#)

- 
- OPEN ACCESS** 012031  
Growth Performance of Laboratory-Scale *Chaetoceros calcitrans* in Different Containers  
M Jannah, M F Ulkhaq, M H Azhar, Suciyo and dan W Soemarjati  
[+](#) Open abstract [View article](#) [PDF](#)
- 
- OPEN ACCESS** 012032  
Study of the Dynamic Density and Diversity of Plankton at Different Brackishwater Pond Managements in Gresik, East Java  
O Tilahwatih, E D Masithah and dan B S Rahardja  
[+](#) Open abstract [View article](#) [PDF](#)
- 
- OPEN ACCESS** 012033  
The Effect of Demineralization Stage of Agar's Solid Waste on the Characterization of Activated Carbon  
R Febrianto, Sudarno and R Kusdarwati  
[+](#) Open abstract [View article](#) [PDF](#)
- 
- OPEN ACCESS** 012034  
The Dynamic of Density and Diversity of Cyanophyta in Different Pond Bases in Educational Pond of Faculty of Fisheries and Marine Universitas Airlangga  
S Z Cahyani, E D Masithah and Prayogo  
[+](#) Open abstract [View article](#) [PDF](#)
- 
- OPEN ACCESS** 012035  
Effect of Different Salinity Level within Water Against Growth Rate, Survival Rate (FCR) of Catfish (*Clarias* sp.)  
D Prananingtyas, Prayogo and S Rahardja  
[+](#) Open abstract [View article](#) [PDF](#)
- 
- OPEN ACCESS** 012036  
Molecular identification and phylogenetic reconstruction of two fiddler crabs (*Uca forcipata* and *Uca triangularis*)  
S Andriyono, H Pramono and H W Kim  
[+](#) Open abstract [View article](#) [PDF](#)
- 
- OPEN ACCESS** 012037  
The molecular identification and phylogenetic reconstruction of Palaemonid and Penaeid shrimp from the southern part of Bangladesh  
M J Alam, S Andriyono, A T M Eunus and H W Kim  
[+](#) Open abstract [View article](#) [PDF](#)
- 
- OPEN ACCESS** 012038

Morphometric characteristics of Fur Cockles (*Anadara spp.*) in Wonokromo and Juanda Estuary, Surabaya

P B Pamungkas, K T Pursetyo, J Triastuti and N N Dewi

[+](#) [Open abstract](#) [View article](#) [PDF](#)

---

**OPEN ACCESS**

012039

Stock status of ark clams (*Anadara spp.*) based on dredge fishing of the east coast of Surabaya, Indonesia

N N Dewi, K T Pursetyo, O P Darmono, F R Fachri, F S Puspitasari and A Damora

[+](#) [Open abstract](#) [View article](#) [PDF](#)

---

**OPEN ACCESS**

012040

The distribution patterns and biomass of bivalves in Segoro Tambak estuary, Sedati, Sidoarjo, East Java

S H Liyana, L A Sari, N N Dewi, E D Masithah, A M Sahidu and K T Pursetyo

[+](#) [Open abstract](#) [View article](#) [PDF](#)

---

**OPEN ACCESS**

012041

Inventorization of reef fish on Tabuhan Island, Banyuwangi, East Java, Indonesia

Suciyono, M A Azhar, M F Ulkhaq and H Kenconoajati

[+](#) [Open abstract](#) [View article](#) [PDF](#)

---

**OPEN ACCESS**

012042

Dynamic study on the effect of calcium hydroxide and sodium bicarbonate treatment on the N/P ratio and plankton abundance

M R N Tsany, E D Masithah, B S Rahardjo and D D Nindarwi

[+](#) [Open abstract](#) [View article](#) [PDF](#)

---

**OPEN ACCESS**

012043

Distribution patterns and the biomass of bivalves at Segoro Tambak estuary, Sedati, Sidoarjo, East Java

S H Liyana, L A Sari, N N Dewi, E D Masithah, A M Sahidu and K T Pursetyo

[+](#) [Open abstract](#) [View article](#) [PDF](#)

---

**OPEN ACCESS**

012044

Optimization of diatom *Haslea ostrearia* cultivation in different mediums and nutrients

S Arsad, C Stavrakakis, V Turpin, P Rossa, Y Risjani, L A Sari, F S Prasetya and J-L Mouget

[+](#) [Open abstract](#) [View article](#) [PDF](#)

---

**OPEN ACCESS**

012045

Coastal ecosystem model based on environmental suitability and carrying capacity of the fishpond in Banyuwangi Region, East Java, Indonesia



E W Setyaningrum, Maghdalena, A T K Dewi, M. Yuniartik and E D Masithah

[+ Open abstract](#) [View article](#) [PDF](#)

---

**OPEN ACCESS**

012046

Development and succession of sessile macrofouling organisms on the artificial structure in the Shallow Coastal Waters of Sabah, Malaysia

M A M Affandy, J Madin, K P Jakobsen and M Auluck

[+ Open abstract](#) [View article](#) [PDF](#)

---

**OPEN ACCESS**

012047

Fish species difference around the light of metal halide lamps and LED lamps with mini purse seine operation

M A Sofijanto, D Arfiati, T D Lelono and A Muntaha

[+ Open abstract](#) [View article](#) [PDF](#)

---

**OPEN ACCESS**

012048

Status of coral diseases and compromised health syndromes on Pemuteran shallow reefs, North Bali island

W Karim

[+ Open abstract](#) [View article](#) [PDF](#)

---

**OPEN ACCESS**

012049

Management options for restoring artificial coral reefs in Indonesia: strengthening in institutional approach

Rudianto and Ahmad Zainul

[+ Open abstract](#) [View article](#) [PDF](#)

---

**OPEN ACCESS**

012050

Growth of salt-secretor and non-salt secretor mangrove seedlings with varying salinity and their relations to habitat zonation

M Basyuni, Ramayani, A Hayullah, Prayunita, M Hamka, L A Putri and S Baba

[+ Open abstract](#) [View article](#) [PDF](#)

---

**OPEN ACCESS**

012051

Distribution of *Ctenactis Echinata* and *Fungia Consinna* coral on Mamburit island, Sumenep regency, East Java

Sawiya, D Arfiati, Guntur and U Zakiyah

[+ Open abstract](#) [View article](#) [PDF](#)

---

**OPEN ACCESS**

012052

Diversity species and condition of seagrass ecosystem in Teluk Awur and Prawean Jepara

I Riniatsih, A Ambariyanto, E Yudiati, R Hartati, W Widianingsih and R T Mahendrajaya

[+](#) [Open abstract](#) [View article](#) [PDF](#)

---

**OPEN ACCESS**

012053

Copper (Cu) and Cadmium (Cd) toxicity on growth, chlorophyll-a and carotenoid content of phytoplankton *Nitzschia* sp

D Hindarti and A.W. Larasati

[+](#) [Open abstract](#) [View article](#) [PDF](#)

---

**OPEN ACCESS**

012054

Vegetation Characteristic and Micro Environment of Mangrove Rehabilitation Forest at Coastal Areas of East Sinjai, South Sulawesi

H Setiawan

[+](#) [Open abstract](#) [View article](#) [PDF](#)

---

**OPEN ACCESS**

012055

The Use of Water Lettuce (*Pistia stratiotes*) as Phytoremediator for Concentration and Deposits of Heavy Metal Lead (Pb) Tilapia (*Oreochromis niloticus*) Gills

A A D Amalia, B S Rahardja and Rr J Triastuti

[+](#) [Open abstract](#) [View article](#) [PDF](#)

---

**OPEN ACCESS**

012056

The Effectiveness of Heavy Metals Pb, Cd and Zn Reduction in NPK Fertilizer Waste Combined with Biofilters of Seaweed (*Gracillaria* sp.), Blood Clam (*Anadara* sp.), and Zeolite

A R K Sari, R K Harryes, F A Anggraini, M A Alamsyah and dan A Ahadi

[+](#) [Open abstract](#) [View article](#) [PDF](#)

---

**OPEN ACCESS**

012057

The Effectiveness of Combining *Gracilaria* Sp. Seaweed Biofilter and *Anadara granosa* Shell with Zeolite in the Decrease in the Level of Mercury (Hg) Heavy Metal

J A Spesatri, B S Rahardja and A A Abdillah

[+](#) [Open abstract](#) [View article](#) [PDF](#)

---

**OPEN ACCESS**

012058

The Effectiveness of Combination of Seaweed (*Gracillaria* sp.), Blood Clam (*Anadara granosa*), and Zeolite as Biofilter in the Reduction of Heavy Metal Copper (Cu)

I Achmadi, B Setya and A A Ahadi

[+](#) [Open abstract](#) [View article](#) [PDF](#)

---

**OPEN ACCESS**

012059

Bioaccumulation of Cadmium (Cd) Heavy Metal on Seaweed (*Gracilaria* sp.) in Traditional Fishpond of Jabon Subdistrict, Sidoarjo District

O Ardiyansyah, Sudarno and Rosmanida

[+ Open abstract](#) [View article](#) [PDF](#)

---

**OPEN ACCESS**

012060

**Identification of Proteolytic Bacterial Isolates in Sediment Ecosystem of Gunung Anyar Mangrove Forest, Surabaya**

P B Utomo, Sudarno and B S Rahardja

[+ Open abstract](#) [View article](#) [PDF](#)

---

**OPEN ACCESS**

012061

**The Analysis of Cockle (*Anadara inaequalis*) Gonad Maturity Level in the Estuary of Banjar Kemuning River, Sedati, Sidoarjo**

R F Saputra, E D Masithah and P D Wulansari

[+ Open abstract](#) [View article](#) [PDF](#)

---

**OPEN ACCESS**

012062

**Spatial and Temporal Variation of Biomass Blood Cockle (*Anadara* sp.) in Estuaries Dadapan, Sedati Sub-District, Sidoarjo, East Java**

M R Ramadhan, K T Pursetyo, Prayogo and N N Dewi

[+ Open abstract](#) [View article](#) [PDF](#)

---

**OPEN ACCESS**

012063

**Distribution Patterns and Biomass of Bivalve in Juanda and Segoro Tambak Estuary in Sedati, Sidoarjo, East Java**

S H Liyana, E D Masithah and A M Sahidu

[+ Open abstract](#) [View article](#) [PDF](#)

---

**OPEN ACCESS**

012064

**Analysis of Cadmium (Cd) Heavy Metal on Sediment and Mangrove Leaves *Avicennia marina* at Mangrove Ecotourism Wonorejo, Surabaya**

W C Dermawan, Prayogo and B S Rahardja

[+ Open abstract](#) [View article](#) [PDF](#)

---

**OPEN ACCESS**

012065

**Analysis of Lead (Pb) Value Comparison on Seaweed (*Eucheuma cottonii*) in Bluto and Saronggi Sumenep Marine, Madura, East Java**

N L Komariyah, K T Pursetyo and S A Sudjarwo

[+ Open abstract](#) [View article](#) [PDF](#)

---

**OPEN ACCESS**

012066

**The potential addition of lemuru oil to commercial feed to increase the content of EPA and DHA in eels (*Monopterus albus*)**

A Imanisa, M B Santanumurti, M Lamid and Agustono

[+](#) [Open abstract](#) [View article](#) [PDF](#)

---

**OPEN ACCESS**

012067

Effect of lysine in addition to commercial feed on crude protein and the energy digestibility of gourami (*Osphronemus gouramy*)

D Setiyawan, S H Samara, Agustono and M A A Arif

[+](#) [Open abstract](#) [View article](#) [PDF](#)

---

**OPEN ACCESS**

012068

Addition of the papain enzyme to commercial feed against protein retention and feed efficiency in eels (*Anguilla bicolor*)

DA Liono, M Arief, Prayogo and W Isoni

[+](#) [Open abstract](#) [View article](#) [PDF](#)

---

**OPEN ACCESS**

012069

Combination of papain enzyme and phytase enzyme in commercial feed and the protein and energy retention of tilapia *Oreochromis niloticus*

A Saifulloh, M B Santanumurti, M Lamid and W P Lokapirnasari

[+](#) [Open abstract](#) [View article](#) [PDF](#)

---

**OPEN ACCESS**

012070

The effect of giving cake artificial feed on the survival rate, and growth of Common carp (*Cyprinus carpio*) larva in an Installation of Freshwater Culture (IBAT) in Punten, Batu.

I P Zainiyah, Rozi, W H Satyantini and A M Sahidu

[+](#) [Open abstract](#) [View article](#) [PDF](#)

---

**OPEN ACCESS**

012071

The Utilization of Phytase Enzymes and SEM Analysis in order to increase the Quality of Rice Bran as a Layer and Fish Feed

M Lamid, Anam Al-Arif and S H Warsito

[+](#) [Open abstract](#) [View article](#) [PDF](#)

---

**OPEN ACCESS**

012072

The dynamic relationship of phytoplankton abundance and diversity in relation to white shrimp (*Litopenaeus vannamei*) feed consumption in intensive ponds

D D Nindarwi, E D Masithah, D Zulian and A LA Suyoso

[+](#) [Open abstract](#) [View article](#) [PDF](#)

---

**OPEN ACCESS**

012073

Effect of partial replacement of fish meal with *Spirulina platensis* meal in practical diets and culture location on growth, survival, and color enhancement of percula clownfish *Amphiprion percula*

S Hudaidah, B Putri, S H Samara and Y T Adiputra

[+ Open abstract](#) [View article](#) [PDF](#)

---

**OPEN ACCESS**

012074

The Effect of Different level of Probiotic Addition on Commercial Feed against Digestibility and Efficiency of Nile Tilapia Feed (*Oreochromis Niloticus*)

D Taufik, M Arief and H Kenconoajati

[+ Open abstract](#) [View article](#) [PDF](#)

---

**OPEN ACCESS**

012075

The Effect of Adding Synbiotics Into Commercial Feed Towards Protein Retention and Fat Retention of Dumbo Catfish (*Clarias sp.*)

H Syevidiana, M Arief and I S Hamid

[+ Open abstract](#) [View article](#) [PDF](#)

---

**OPEN ACCESS**

012076

The Effect of Adding Lysine in Commercial Feed on Growth Rate, Feed Efficiency, and Feed Conversion Ratio to Tambaqui (*Colossoma Macropomum*)

L V D Putra, U Agustono and S H Kenconoajati

[+ Open abstract](#) [View article](#) [PDF](#)

---

**OPEN ACCESS**

012077

The Effect of Coconut Shell Liquid Smoke in Commercial Feed on Total Bacteria of *Pseudomonas Aeruginosa* in the Tilapia's Kidney (*Oreochromis niloticus*)

M Rahmawati, Sudarno and S Subekti

[+ Open abstract](#) [View article](#) [PDF](#)

---

**OPEN ACCESS**

012078

The Effect of Coconut Shell Liquid Smoke in Commercial Feed Towards Total *Pseudomonasaeruginosa* Bacteria on Gastrointestinal Tract Tilapia (*Oreochromis Niloticus*)

S Rahmadini, Sudarno and S Subekti

[+ Open abstract](#) [View article](#) [PDF](#)

---

**OPEN ACCESS**

012079

Antibacterial activity of honey in preserving high-pressure cooked milkfish stored at room temperature

D A Hakim, W Tjahjaningsih and Sudarno

[+ Open abstract](#) [View article](#) [PDF](#)

---

**OPEN ACCESS**

012080

Bacterial composition in the gastrointestinal tract of *Uca* spp crabs fed on *Avicennia marina* leaf litter

M A B Kareho, E D Masithah and W Tjahjaningsih

[+ Open abstract](#) [View article](#) [PDF](#)

---

**OPEN ACCESS**

012081

The correlation between ectoparasite infestation and the total plate count of *Vibrio* sp. in pacific white shrimp (*Litopenaeus vannamei*) in ponds

G Mahasri, Rozi, A T Mukti, W H Satyantini and N M Usuman

[+ Open abstract](#) [View article](#) [PDF](#)

---

**OPEN ACCESS**

012082

In vitro study of an ethanolic extract of coffea leaves to inhibit freshwater pathogenic bacteria

H Kenconoajati, MF Ulkhaq, DS Budi and MH Azhar

[+ Open abstract](#) [View article](#) [PDF](#)

---

**OPEN ACCESS**

012083

The effect of noni fruits (*Morinda citrifolia*) with different ripeness stages against the total erythrocytes and leukocytes of comet goldfish (*Carassius auratus*) infested by *Argulus*

E Setyaningsih, Kismiyati and S Subekti

[+ Open abstract](#) [View article](#) [PDF](#)

---

**OPEN ACCESS**

012084

The protection capacity of the crude and whole protein spores of *Myxobolus koi* as an immunostimulant material development in goldfish (*Cyprinus carpio*) for preventing Myxobolus

G Mahasri, M Yusuf, R Woro and M B Santanumurti

[+ Open abstract](#) [View article](#) [PDF](#)

---

**OPEN ACCESS**

012085

Identification of white spot syndrome virus (WSSV) in pacific white shrimps (*Litopenaeus vannamei*) from ponds postexposure to immunogenic membrane proteins (*Zoothamnium penaei*)

P A Wiradana, G Mahasri, R E R Sari, U C Marwiyah and R Prihadhana

[+ Open abstract](#) [View article](#) [PDF](#)

---

**OPEN ACCESS**

012086

Gills and swimming leg histopathologies in pacific white shrimp (*Lithopenaeus vannamei*) from ponds exposed to the immunogenic membrane proteins of *Zoothamnium penaei*

R E R Sari, G Mahasri, P A Wiradana and U C Marwiyah

[+ Open abstract](#) [View article](#) [PDF](#)

---

**OPEN ACCESS**

012087

Total plate count and identification of vibrio in pacific white shrimp (*Litopenaeus vannamei*) from ponds and in those exposed to immunogenic protein membrane *Zoothamnium penaei*

U C Marwiyah, G Mahasri, R E Ratnasari and P A Wiradana

[+](#) Open abstract [View article](#) [PDF](#)

---

OPEN ACCESS

012088

Effectiveness of *Nitrobacter* on the specific growth rate, survival rate and feed conversion ratio of dumbo catfish *Clarias* sp. with density differences in the aquaponic system

A S Taragusti, M B Santanumurti, B S Rahardja and Prayogo

[+](#) Open abstract [View article](#) [PDF](#)

---

OPEN ACCESS

012089

The erythrocyte and leucocyte profile of saline tilapia (*Oreochromis Niloticus*) in a cultivation system with nanobubbles

M Gunanti, P D Wulansari and K Kinzella

[+](#) Open abstract [View article](#) [PDF](#)

---

OPEN ACCESS

012090

The prevalence and intensity of ectoparasites infecting vannamee shrimp (*Litopenaeus vannamei*) reared in different ponds

N Nurlatiffah, Kismiyati and MF Ulkhaq

[+](#) Open abstract [View article](#) [PDF](#)

---

OPEN ACCESS

012091

Protozoan parasites of Vannamee Shrimp (*Litopenaeus vannamei*) in farmed fish from Pasuruan, Indonesia

U Hafidloh and P D W Sari

[+](#) Open abstract [View article](#) [PDF](#)

---

OPEN ACCESS

012092

Growth of *Bacillus* sp. and *Flavobacterium* sp. in culture media with the addition of liquid whey tofu waste

W H Satyantini, R M Pratiwi, A M Sahidu and D D Nindarwi

[+](#) Open abstract [View article](#) [PDF](#)

---

OPEN ACCESS

012093

The effect of noni *Morinda citrifolia* L. fruit extracts on the gill histopathological changes of Nile tilapia *Oreochromis niloticus*

A T Mukti, E Dewi, W H Satyantini, L Sulmartiwi, Sudarno and M Hassan

[+](#) Open abstract [View article](#) [PDF](#)

---

OPEN ACCESS

012094

Prevalence and intensity of ectoparasites in Pacific white shrimp (*Litopenaeus vannamei*) seeds from a pond and hatchery

G Mahasri, T Hidayat and Sudarno

[+](#) Open abstract [View article](#) [PDF](#)

---

**OPEN ACCESS**

012095

Prevalence and intensity of ectoparasites in gabus fish (*Channa striata*) at Cangkringan Fishery Cultivation Technology Development Center, Sleman, Yogyakarta

E N Fitriani, Rozi, M Arief and H Suprpto

[+](#) Open abstract [View article](#) [PDF](#)

---

**OPEN ACCESS**

012096

Antibacterial activity of bitter melon (*Momordica charantia* L.) leaf extract against *Aeromonas hydrophila*

D A Masithoh, R Kusdarwati and D Handijatno

[+](#) Open abstract [View article](#) [PDF](#)

---

**OPEN ACCESS**

012097

Determination of the *aerolysin* gene in *Aeromonas hydrophila* using the polymerase chain reaction (PCR) technique

G Christy, R Kusdawarti and D Handijatno

[+](#) Open abstract [View article](#) [PDF](#)

---

**OPEN ACCESS**

012098

Bioaccumulation and histopathological effect on the gills and liver of silver barb (*Barbonymus gonionotus*) exposed to the heavy metal nickel

I Purwanti, W Arroisi, B S Rahardja and L Sulmartiwi

[+](#) Open abstract [View article](#) [PDF](#)

---

**OPEN ACCESS**

012099

Identification and prevalence of the ectoparasite *Octolasmis* in sand lobster (*Panulirus homarus*) and bamboo lobster (*Panulirus versicolor*) in Floating Net Cages in Sape, Bima Regency, West Nusa Tenggara Province, Indonesia

L. Yusgita, Kismiyati, S. Subekti, P D Wulansari and M K Amiin

[+](#) Open abstract [View article](#) [PDF](#)

---

**OPEN ACCESS**

012101

Superoxide dismutase (SOD) and metallothionein (MT) *Tubifex tubifex* at the acute mercury exposure

I M Widiastuti, A M S Hertika, M Musa and D Arfiati

[+](#) Open abstract [View article](#) [PDF](#)

---

**OPEN ACCESS**

012102

Antifungal activity of marine sponges (Class Demospongiae) collected from Biak, Indonesia



R D Kasitowati, K Witriansyah, A Trianto, D C Pratiwi and M A P Panjaitan

[+ Open abstract](#) [View article](#) [PDF](#)

---

**OPEN ACCESS**

012103

Antibacterial activities of *Physalis angulata* herb extract on white feces diseases (WFD) in *Litopenaeus shrimp vannamei*

E Saraswati and AS Wijaya

[+ Open abstract](#) [View article](#) [PDF](#)

---

**OPEN ACCESS**

012104

The Effects of Mercury Chloride (Hgcl<sub>2</sub>) on the Changes in Hematology and Blood Sugar Level in Carps (*Cyprinus carpio*)

I Setiyowati, H Suprpto and G Mahasri

[+ Open abstract](#) [View article](#) [PDF](#)

---

**OPEN ACCESS**

012105

Change in Two-Spot Catfish Histopathological Liver (*Mystus nigriceps*) Accumulated with Heavy Metal Cadmium (Cd) in Ketingan Estuary, Sidoarjo - East Java, Indonesia

L Anggitasari, H Suprpto and dan D D Nindarwi

[+ Open abstract](#) [View article](#) [PDF](#)

---

**OPEN ACCESS**

012106

Effectiveness of Pepaya Leaf Extract (*Carica Papaya* L.) to Control Ectoparasite *Argulus* on Common Carp (*Cyprinus Carpio*)

L S Azizah, Kismiyati and A H Fasya

[+ Open abstract](#) [View article](#) [PDF](#)

---

**OPEN ACCESS**

012107

Bacterial Identification from Marine Ornamental Fish in Fish Quarantine, Quality Control and Fishery Products Safety Class I Denpasar, Bali

N R Rukmana, G Mahasri, S N Hidayah, M F Ulkhaq and H Kenconoajati

[+ Open abstract](#) [View article](#) [PDF](#)

---

**OPEN ACCESS**

012108

Prevalence and Intensity of Ectoparasites of Tilapia (*Oreochromis niloticus*) in Ponds with Low, Medium and High Stocking Density

M Indahsari, Kismiyati and M F Ulkhaq

[+ Open abstract](#) [View article](#) [PDF](#)

---

**OPEN ACCESS**

012109

Texture profile of the bread produced from composite flour *Bruguiera gymnorrhiza* flour (BGF) and wheat flour

M N G Amin, M N Hasan, Zakariya, S A Pralebda, H Pramono, E Saputra, S Subekti and M A Alamsjah

[+ Open abstract](#) [View article](#) [PDF](#)

---

**OPEN ACCESS**

012110

The potential of seaweed waste (*gracilaria* sp. and *eucheuma cottonii*) as a medium density fiberboard (mdf)-based pot material for better water use efficiency in tomato plants

H Kurnia, R R Rifadi, Agustono, M N G Amin, S A Sudjarwo and M A Alamsjah

[+ Open abstract](#) [View article](#) [PDF](#)

---

**OPEN ACCESS**

012111

Characterization of edible coating based on surimi fillet catfish as biodegradable packaging

E Saputra

[+ Open abstract](#) [View article](#) [PDF](#)

---

**OPEN ACCESS**

012112

Characteristics of the fish protein isolate recovered from Sardine by-products using the Isoelectric Solubilization- Precipitation method

H. Pramono, N T Irawan and M R A Firdaus

[+ Open abstract](#) [View article](#) [PDF](#)

---

**OPEN ACCESS**

012113

The potential of peptides derived from the chymotrypsin hydrolysate of soft shelled turtle yolk against the Angiotensin I Converting Enzyme

D Y Pujiastuti and J L Hsu

[+ Open abstract](#) [View article](#) [PDF](#)

---

**OPEN ACCESS**

012114

Kappa and iota carrageenan combination of *Kappaphycus alvarezii* and *Eucheuma spinosum* as a gelatin substitute in ice cream raw material product

I Suryani, D I Permata Sari, D M Astutik and A Abdillah

[+ Open abstract](#) [View article](#) [PDF](#)

---

**OPEN ACCESS**

012115

Detection of antibiotic-resistant *Salmonella* sp. in the seafood products of Surabaya local market

H Pramono, A Kurniawan, N Andika, T F Putra, M A R Hazwin, S Utari, A P Kurniawan, E D Masithah and A M Sahidu

[+ Open abstract](#) [View article](#) [PDF](#)

---

**OPEN ACCESS**

012116

The effect of kappa-carrageenan fortification on the physicochemical and organoleptic properties of milkfish galantin

D Darmawan, L Sulmartiwi and A A Abdillah

[+ Open abstract](#) [View article](#) [PDF](#)

---

**OPEN ACCESS**

012117

The application of a high voltage electric field (HVEF) to reduce *Escherichia coli* and *Salmonella thyphimurium* bacteria in red snapper (*Lutjanus* sp.) fillets

D J Subakti, H Pramono and J Triastuti

[+ Open abstract](#) [View article](#) [PDF](#)

---

**OPEN ACCESS**

012118

Isolation and identification of fish import consumption bacteria in a fish quarantine center, focusing on the quality control and safety of fishery products at Tanjung Priok, Jakarta

H S Farizky and W H Satyantini

[+ Open abstract](#) [View article](#) [PDF](#)

---

**OPEN ACCESS**

012119

Replacement of gum arabic by dry *Spirullina* sp. biomass as a food emulsifier in bread making

D Wulandari, M N G Amin, E D Masithah, M Lamid and M A Alamsjah

[+ Open abstract](#) [View article](#) [PDF](#)

---

**OPEN ACCESS**

012120

Nutrient improvement of *Bruguiera gymnorrhiza* peel fruit through fermentation using commercial tempeh (Indonesian fermented soybean) mold

M N G Amin, R A Prastiya, M N Hasan, Zakariya and M A Alamsjah

[+ Open abstract](#) [View article](#) [PDF](#)

---

**OPEN ACCESS**

012121

DPPH scavenging property of bioactives from soft corals origin palu bay, Central Sulawesi, Indonesia

W A Tanod, U Yanuhar, Maftuch, D Wahyudi and Y Risjani

[+ Open abstract](#) [View article](#) [PDF](#)

---

**OPEN ACCESS**

012123

Harvesting *Chaetoceros gracilis* by flocculation using Chitosan

W AA Yamin, S R M Shaleh, F F Ching, R Othman, M Manjaji-Matsumoto, S Mustafa, S Shigeharu and G Kandasamy

[+ Open abstract](#) [View article](#) [PDF](#)

---

**OPEN ACCESS**

012124

The Use of Rajungan (*Portunus Pelagicus*) Shells as Flour in Wet Noodles Ingredient

A Rahma, A A Abdillah and E Saputra

[+ Open abstract](#) [View article](#) [PDF](#)

---

**OPEN ACCESS**

012125

### The Potential of Lindur Fruit Flour (*Bruguiera Gymnorhiza*) in Reducing Oil Absorption of Milkfish Nugget during the Deep Frying Process

A Widyastuti, AA Abdillah and Laksmi Sulmartiwi

[+ Open abstract](#) [View article](#) [PDF](#)

---

**OPEN ACCESS**

012126

### Chemical and Sensory Characteristics of Flakes Made from Seaweed (*Eucheuma cottonii*) and Soybean (*Glycine max* (L.) Merrill)

I R Firdarini, Kismiyati and A Manan

[+ Open abstract](#) [View article](#) [PDF](#)

---

**OPEN ACCESS**

012127

### The Effect of Maltodextrin Concentration on the Characteristics of Snappers' (*Lutjanus* sp.) Peptone

R Ningsih, Sudarno and Agustono

[+ Open abstract](#) [View article](#) [PDF](#)

---

**OPEN ACCESS**

012128

### Physics and Chemical Characteristics of Sargassum Sp. Seaweed with Addition of Sodium Alginate Stabilizer to Different Concentrations

M Via, A A Abdillah and M A Alamsjah

[+ Open abstract](#) [View article](#) [PDF](#)

---

**OPEN ACCESS**

012129

### The Effect of Sorbitol Addition on the Characteristic of Carrageenan Edible Film

M Rahmawati, M Arief and W H Satyantini

[+ Open abstract](#) [View article](#) [PDF](#)

---

**OPEN ACCESS**

012130

### The Utilization of Flower Crab (*Portunus Pelagicus*) Shell as Pasta Flavor

R Rahmawati, E Saputra and A A Abdillah

[+ Open abstract](#) [View article](#) [PDF](#)

---

**OPEN ACCESS**

012131

### Income analysis of catching fish using dogol (demersal danish seine) in the sub-district of Brondong, Lamongan

A Aulia, A M Sahidu and Agustono

[+ Open abstract](#) [View article](#) [PDF](#)

**OPEN ACCESS**

012132

Area development based on conservation and ecotourism on the Cemara Beach (Pine Trees Beach), Pakis, Banyuwangi, East Java Province, Indonesia

E W Setyaningrum, A T K Dewi, K P Prapti, Z Erwanto and H D Susanti

[+](#) Open abstract [View article](#) [PDF](#)

**OPEN ACCESS**

012133

Socioeconomic and institutional factors affecting the sustainable development for fisheries in Bontang City, Indonesia

B I Gunawan

[+](#) Open abstract [View article](#) [PDF](#)

**OPEN ACCESS**

012134

Factors influencing the market requirements fulfillment in small medium enterprise fish processors in East Java

W Sulistyowati, Soemarno, A Efani and M Primyastanto

[+](#) Open abstract [View article](#) [PDF](#)

**JOURNAL LINKS**

---

[Journal home](#)

---

[Information for organizers](#)

---

[Information for authors](#)

---

[Search for published proceedings](#)

---

[Contact us](#)

---

[Reprint services from Curran Associates](#)



PAPER • OPEN ACCESS

## The effect of noni *Morinda citrifolia* L. fruit extracts on the gill histopathological changes of Nile tilapia *Oreochromis niloticus*

To cite this article: **A. T. Mukti** et al 2019 *IOP Conf. Ser.: Earth Environ. Sci.* **236** 012093

View the [article online](#) for updates and enhancements.



**IOP | ebooks™**

Bringing you innovative digital publishing with leading voices to create your essential collection of books in STEM research.

Start exploring the collection - download the first chapter of every title for free.

# The effect of noni *Morinda citrifolia* L. fruit extracts on the gill histopathological changes of Nile tilapia *Oreochromis niloticus*

A T Mukti<sup>1\*</sup>, E Dewi<sup>2</sup>, W H Satyantini<sup>1</sup>, L Sulmartiwi<sup>3</sup>, Sudarno<sup>1</sup> and M Hassan<sup>4</sup>

<sup>1</sup> Department of Fish Health Management and Aquaculture, Faculty of Fisheries and Marine, Universitas Airlangga, Kampus C Unair, Jl. Mulyorejo Surabaya 60115, Indonesia

<sup>2</sup> Undergraduate, Study Program of Aquaculture, Faculty of Fisheries and Marine, Universitas Airlangga, Kampus C Unair, Jl. Mulyorejo Surabaya 60115, Indonesia

<sup>3</sup> Department of Marine, Faculty of Fisheries and Marine, Universitas Airlangga, Kampus C Unair, Jl. Mulyorejo Surabaya 60115, Indonesia

<sup>4</sup> Institut of Tropical Aquaculture, Universiti Malaysia Terengganu, 21030 Kuala Terengganu, Terengganu, Malaysia

\*Corresponding Author: [akhmad-t-m@fpk.unair.ac.id](mailto:akhmad-t-m@fpk.unair.ac.id)

**Abstract.** Noni (*Morinda citrifolia* L.) fruit has a bioactive compound potentially used as an immunostimulatory ingredient in fish. The toxicity of noni fruit extract is therefore important to determine. This study aimed to learn about the effects of noni fruit extract on the gill histopathological changes of Nile tilapia. The method used an experiment using a completely random design with six treatments of different noni fruit extract concentrations with four replications respectively. The fish were immersed in the noni fruit extract solution for 24 and 96 hours respectively. Then, the gill tissue was collected and stored in a BNF solution at room temperature for the histology. This study showed that a concentration of 18% and 20% (5.2 and 6.0 g/L, respectively) caused severe damage to the gill tissue, to the point where necrosis found. A concentration of less than 18% (5.2 g/L) was indicated by a decrease in the damage to the gill tissue after an immersion of 96 hours compared to the immersion for 24 hours. The increased concentration of noni fruit extract has therefore been shown to cause more damage to the tissues and organs.

## 1. Introduction

Noni fruit, also known as *Morinda citrifolia* L., contains scopoletin, polyphenols, carotenoids, flavonoids, tannins, anthocyanins, ascorbic acid, nitrate, oxalate, phytate, saponins, and free amino acids [1]. Noni fruit is known to contain several active compounds that are capable of affecting immunomodulators, which activate the immune system's bodily responses after pathogen infection [2], besides being antibacterial, antiviral, antifungal and antiparasitic [3].

Tilapia is an organism used for toxicity tests [4]; it has a widespread population and is a euryhaline [5]. Tilapia occupy a variety of habitats, including shallow freshwater waterways, ponds, rivers, and lakes. Toxicity tests using fish tilapia organisms have had an important impact on the development of aquaculture management [6].

The presence of a foreign substance in the form of the noni fruit extract received by the fish retrieved from the environment will affect the structure of the cells or tissues. Changes in the gills of the fish were one of the most common responses, in which it retaliated against the foreign substances in the environment [7]. A highly toxic substance concentration decreases the ability of the liver to





eliminate toxic substances, as this organ is particularly vulnerable to the influence of chemical substances, resulting in the frequently damaged and abnormal organ structure.

The toxicity test of the noni fruit aqueous extract using the immersion method was conducted to observe the impact of accidental poisoning from the noni fruit extract in the fish. Deng *et al.* [8] reported that the toxicity of the noni fruit extract using the Brine Shrimp Lethality Test (BLST) obtained a result that was 76.13% of LC<sub>50</sub>. The LD<sub>50</sub> test results for the noni fruit extract after 24 hours showed that it was not toxic in the fish tilapia at a concentration of 1.42 g/L [9]. The active antimicrobial compounds at high concentrations could poison the fish seed due to the high level of toxic compounds, namely saponins [10].

The role of the noni fruit extract in tilapia is not widely known. This study was intended to observe the immersion influence of noni fruit extract on the gill histopathological changes of Nile tilapia fish.

## 2. Materials and methods

This study was conducted in the Laboratory of the Faculty of Fisheries and Marine, Universitas Airlangga and in Balai Karantina Ikan Kelas I Juanda, Surabaya, East Java, Indonesia.

### 2.1. Test organisms

In this study, the fish used were Nile tilapia that were 7 - 9 cm in size with an 11 g average weight originating from the Installation of Freshwater Aquaculture Umbulan, Pasuruan, East Java, Indonesia.

### 2.2. Noni fruit extract

The noni fruit was characterized by a white-yellowish color and slightly soft meat; they were used as the extraction object, as according to [11]. The noni fruit was washed and cut into small pieces. The aqueous extract method was conducted as according to [12]; i.e. 100 g/L of noni fruit pieces were mixed with aquadest using a blender and filtered using a filter cloth. The extract solution was then applied directly to the treatment.

### 2.3. Fish rearing

The tilapias were reared in a 10 L-volume aquarium at a density of 1 fish/L for each treatment. The fish were acclimated for two days before the treatment was done.

### 2.4. Treatment

This study used an experimental method using a complete randomized design with six treatments of noni fruit extract concentration and four replications respectively. The concentrations of the noni fruit extract were based on the preliminary trials that had been done to determine the LC<sub>50</sub> over 96 hours, resulting in 5.4 g/L. The treatments were done through the immersion of the tilapia in the noni extract solution (0.0 g/L as control, 3.6, 4.2, 4.8, 5.4, and 6.0 g/L) for 96 hours. Any sub-lethal effects on the fish's swimming and movement were measured by counting the tachiventilation for 24 and 96 hours respectively.

### 2.5. Histological preparation

The sampling of the fish's gill tissue was done after 24- and 96-hours. The gill tissue from each treatment of noni fruit extract concentration was separated into different sample bottles and fixated using a buffer neutral formalin (BNF) solution, as according to Junqueira and Carneiro [13]. The histological method was conducted by McCann [14] using hematoxylin and eosin staining [15].

### 2.6. Histopathological observation

The histology samples were observed under 100× and 400 × magnification using an Olympus microscope (Olympus Optical Ltd. Tokyo, Japan), which was equipped with a monitor. The histopathology was evaluated using the histopathological scoring standard according to Crawford [16], such as shown in Table 1.

**Table 1.** Histopathological scoring [17]

Field Area	Score of damage
Normal	0 (normal)
Abnormal <25%	1 (mild)
Abnormal 26 - 50%	2 (moderate)
Abnormal 51 - 75%	3 (heavy)
Abnormal 76 - 100%	4(very heavy)

### 2.7. Data analysis

The data were analyzed using the non-parametric statistical method of Kruskal-Wallis and continued using the Mann-Whitney test with the SPSS 16.0 computer software application.

## 3. Results and discation

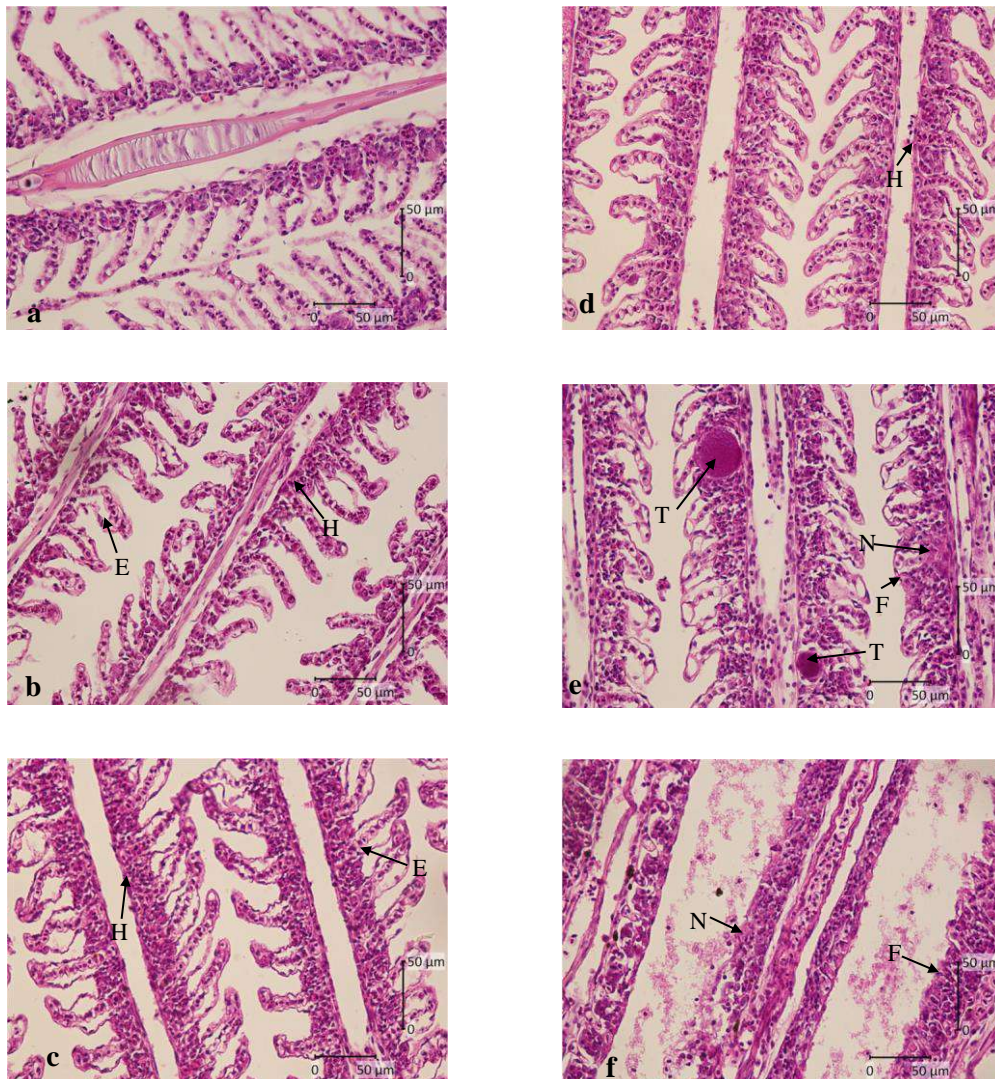
### 3.1 Results

Based on the Kruskal-Wallis test, the concentration of 0.0 g/L was observed to show no damage with a histopathological scoring of 0.00. The other concentrations indicated that they had a histopathological scoring of more than zero, which means that the damage occurred on the gill organ ranged from mild to very heavy. The highest damage was observed in the concentration of 6 g/L, as there was a massive loss of gill tissue in the treatment. Significant histopathological damage was observed in the concentrations of 4.8 and 5.4 g/L, as shown in Table 2. The histopathological changes in the fish's gill after 24 and 96 hours have been shown in Figures 1 and 2, respectively.

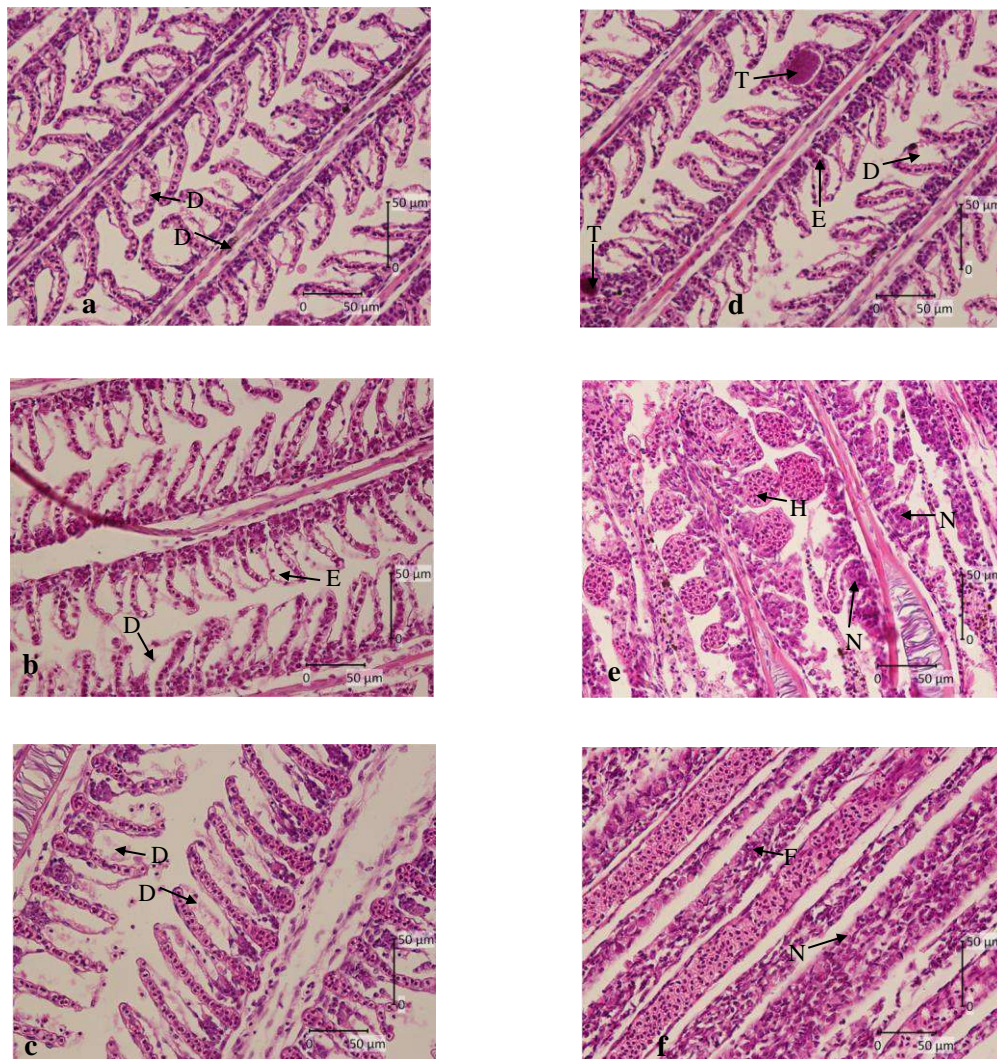
**Table2.** Histopathological scoring of the tilapia's gills after the treatment of the different noni fruit extract concentrations

The concentration of noni fruit extract (g/L)	Damage score on observation time	
	24 hours	96 hours
0.0	0.00 <sup>a</sup>	0.00 <sup>a</sup>
3.6	0.75 <sup>b</sup>	1.00 <sup>b</sup>
4.2	1.00 <sup>c</sup>	1.25 <sup>c</sup>
4.8	1.75 <sup>d</sup>	1.50 <sup>d</sup>
5.4	3.50 <sup>e</sup>	3.75 <sup>e</sup>
6.0	3.75 <sup>f</sup>	4.00 <sup>f</sup>

Note: Different superscript in the same column indicates a significant difference ( $p < 0.05$ ).



**Figure 1.** Gill histopathological changes in the tilapia after immersion in the noni extract concentration for 24 hours observed at  $400\times$  magnification. a: 0.0 g/L, b: 3.6 g/L, c: 4.2 g/L, d: 4.8 g/L, e: 5.4 g/L, and f: 6.0 g/L; E = oedema, F = lamellae fusion, H = hyperplasia, N = necrosis, and T = telangiectasis. Bar scale = 50  $\mu\text{m}$ .



**Figure 2.** Gill histopathology changes in the tilapia after immersion in the noni extract concentration for 96 hours observed at  $400\times$  magnification. a: 0.0 g/L, b: 3.6 g/L, c: 4.2 g/L, d: 4.8 g/L, e: 5.4 g/L, and f: 6.0 g/L; D = desquamation, E = oedema, F = lamellae fusion, H = hyperplasia, N = necrosis, and T = telangiectasis. Bar scale =  $50\ \mu\text{m}$ .

### 3.2 Discussion

Histopathological changes occurred in the gill tissue of the tilapia immersed in the noni fruit extract. Early damage which occurred on the gills was seen at 24 and 96 hours after immersion. Changes in the histopathological tissue included edema, hyperplasia, telangiectasis, lamellae fusion and necrosis. A thin layer of epithelial in the gill was directly related to the external environment, where the gill was exposed by and to the existing pollutants in the water. The slightest damage may lead to a disruption in the function of the gill as a regulator and this can lead to breathing difficulties [18].

The result of the scoring value related to the different immersion times came from the longer immersion in the noni fruit extract, where the greater tissue damage arose. Edema is a condition where there is an increased amount of fluid in the bodily tissues [19]. The extract contained saponin, which was a foreign substance to the fish in their environment. The function of the gill as an osmoregulation organ caused the gill to be highly influenced by the fish's environmental condition, including the concentration difference in the environment. Edema can cause tissue swelling and inflammation due to

fluid accumulation, as there is an electrolyte imbalance that exists in the aquatic environment [20]. Edema is usually followed by the desquamation of the secondary epithelial lamellae [21].

Hyperplasia in the treatments happened due as a response to reducing the extract diffusion. Lin and Randall [22] stated that mucous cell hyperplasia was due to the diffusion reduction of the active ingredients from the plant extracts through the branchial epithelium, besides the possibility of an electrolyte imbalance response caused by a large permeability branch. Hyperplasia resulted in an interlamellar space, resulting in the production of mucous being clogged. Hyperplasia can also cause epithelium thickening at the tip of the filament, which showed as having a shape like a baseball (distal clubbing) or tissue thickening located near the base of the lamellae (basal hyperplasia) [23].

Lamellae fusion occurred as the hyperplasia spread over the basal cells of the epithelium. This event resulted in the inhibition process of respiration as well as expiration. Branchial epithelial necrosis occurred due to direct cytotoxic effects [24] from the noni fruit extract and concurrently with the changes in cellular permeability caused by the surfactants/saponins [25]. Telangiectasis happened due to blood coagulation in the secondary lamellae, disrupting the respiration process.

Foreign substances in the form of the noni fruit extract were able to pass through the blood vessels of the gills and into the liver of the tilapia. The content of some of the active ingredients of noni extract was characterized as being toxic, such as the saponin, flavonoid, and polyphenol compounds. Necrosis is the low activity of cells that experience cell death, causing a loss of cell function in the area which has suffered necrosis.

Harborne [26] stated that saponin has active compounds like soap, which can be detected from their ability to shape the foam and to hemolyze the blood cells. Saponin is contained in the leaves. Saponin affects the fish, as it was used in an excess concentration, causing a toxic effect [10]. Saponin is toxic to cold-blooded organisms, as it was able to hemolyze the red blood cells [27]; this is a symptom of the toxicity caused by saponin as a respiratory toxin.

#### 4. Conclusion

The immersion in the noni fruit extract caused significant gill histopathological changes in the tilapia fish. A high concentration of noni fruit extract significantly increased the histopathological damage. Damages to the gill tissue included edema, desquamation, lamellae fusion, hyperplasia, telangiectasis, and necrosis. A study on the effect of noni fruit extract on the liver and other tissues is needed.

#### 5. References

- [1] Singh D R, Singh S and Banu V S 2016 *British J. Pharma. Res.* **10**, 1-11
- [2] Nayak S and Sushma M 2009 *Pharma. Biol.* **47**, 248-254
- [3] Earle M, Earle R and Anderson A 2001 *Food Product Development* (England: [Woodhead Publishing Limited](#)) p 380
- [4] Muhammad F 2002 *Majalah Ilmiah Biologi BIOMA* **4**, 54-58 (in Indonesian)
- [5] Agah H, Leermakers M, Elskens M, Fatemi S M R and Baeyens W 2009 *Environ. Monitor. Assess.* **157**, 499-514
- [6] Lee J, Durst R W and Wrolstad R E 2005 *J. AOAC Inter.* **88**, 1269-1278
- [7] Au D W T 2004 *Mar. Poll. Bull.* **48**, 817-834
- [8] Deng S, West B J, Palu A K and Jensen C J 2012 *ISRN Analyt. Chemist.* doi:10.5402/2012/160871
- [9] [Muharrama A R W](#), Syawal H and Lukistyowati I 2015 *J. Online Mahasiswa FPIK Unri* **2**, 1-10 (in Indonesian)
- [10] Ezraneti R and Fajri N 2013 *Acta Aquatic.* **3**, 62-65 (In Indonesian)
- [11] Kusuma S F, Pawening R E and Dijaya R 2017 *J. Ilmiah Teknol. Sistem Info.*, **3**, 17-23
- [12] Berkovich L, [Earon G](#), Ron I, Rimmon A, Vexler A and Lev-Ar S 2013 *BMC Complemen. Alternat. Medic.* **13**, 1-7
- [13] Junqueira C L and Carneiro J 2005 *Basic Histology Text and Atlas 11<sup>th</sup> edition* (New York: United States of America) p 502

- [14] McCann M T 2015 *Tools for Automated Histology Image Analysis Thesis Department of Biomedical Engineering* (PA: Carnegie Mellon University Pittsburgh)
- [15] Genten F, Terwinghe E and Danguy A 2009 *Atlas of Fish Histology Department of Histology and Biopathology of Fish Fauna Laboratory of Functional Morphology Université Libre de Bruxelles (ULB)* (Brussels Belgium: Science Publishers) p 104
- [16] Crawford J M 2005 *Liver and Biliary Tract In: Kumar V, Abbas A K and Fausto N Robbins and Cotran Pathologic Basis of Disease 7<sup>th</sup>ed* (Philadelphia: Elsevier Saunders) p 1903
- [17] Corley K N G, Olivier A K and Meyerholz D K 2013 *Vet. Pathol.* **50**, 1007-1015
- [18] Susanto E, Sidabalok I and Dewantoro E 2013 *J. Ruaya* **2**, 23-28 (in Indonesian)
- [19] Mason C 2002 *Biology of Freshwater Pollution Fourth edition* (England: Prentice Hall) p 200
- [20] Rennika, Aunurohim and Abdulgani N 2013 *J. Sains dan Seni Pomits* **2**, 2337-3520
- [21] Roberts R J 2001 *Fish Pathology 3rd ed* (London: WB Saunders) p 467
- [22] Lin H and Randall D 1995 Proton pumps in fish gills: 229-255 *In: Hoar W S, Randall D J and Farrell A P (Ed) Fish Physiology: Cellular and Molecular Approaches to Fish Ionic Regulation* (New York: Academic Press)
- [23] Ersu I M 2008 *Histopathological Picture of Gills, Intestines, and Muscles in Mujair Fish Oreochromis mossambicus in Ciampea Bogor Faculty of Veterinary Medicine* (Bogor: Bogor Agricultural University/IPB) p 50
- [24] Monroy C M, Cortés A C, Sicard D M and Groot de Restrepo H 2005 *Biomedica* **25**, 335-345
- [25] Stagg R M and Shuttleworth T J 1986 *J. Comp. Physiol. B* **156**, 727-733
- [26] Harborne J B 1987 *Phytochemical Methods Guides Modern Ways to Analyze Plants 2nd ed Padmawinata K and Soedira I (translator)* (Bandung: ITB Press) p 354
- [27] Musman M 2010 *Trop. Life Sci. Res.* **21**, 41-50

### Acknowledgments

The authors would like to thank the Rector of Universitas Airlangga and the Dean of Fisheries and Marine Faculty, Universitas Airlangga, who sponsored this research through the Joint Research Grant Program.