

# The Effect of Rusa unicolor Antler Deer Extracts from East Kalimantan in Bone Turnover Cell Models

*by* Suciati Suciati

---

**Submission date:** 03-Apr-2023 03:51PM (UTC+0800)

**Submission ID:** 2054425380

**File name:** Published\_tanduk\_rusa.pdf (951.22K)

**Word count:** 4664

**Character count:** 25370



# The Effect of *Rusa unicolor* Antler Deer Extracts from East Kalimantan in Bone Turnover Cell Models

## Doğu Kalimantan'dan *Rusa unicolor* Geyiği Boynuzu Ekstraktlarının Kemik Dönüşümü Hücre Modelleri Üzerine Etkisi

Retno WIDYOWATI<sup>1\*</sup>, Suciati SUCIATI<sup>1</sup>, Dewi Melani HARYADI<sup>2</sup>, Hsin-I CHANG<sup>3</sup>, IPG Ngurah SURYAWAN<sup>4</sup>, Agung Widi UTAMA<sup>4</sup>

<sup>1</sup>Airlangga University Faculty of Pharmacy, Department of Pharmacognosy and Phytochemistry, Surabaya, Indonesia

<sup>2</sup>Airlangga University Faculty of Pharmacy, Department of Pharmaceutics, Surabaya, Indonesia

<sup>3</sup>National Chiayi University Clinic of Biochemical Science and Technology, Taiwan, China

<sup>4</sup>UPTD Pembibitan dan Inseminasi Buatan, Dinas Peternakan dan Kesehatan Hewan Provinsi Kalimantan Timur, Indonesia

### ABSTRACT

**Objectives:** Osteoporosis is a condition characterized by skeletal degradation of osseous tissue resulting in an escalated chance of broken bones. Traditionally, *Rusa unicolor* horn from East Kalimantan is used to treat many diseases, including conditions associated with bone turnover. The aim of the present research was to analyze the effects of 70% ethanol and aqueous extracts of *R. unicolor* antler's horn from East Kalimantan on nitric oxide inhibition, osteoblast differentiation, and mineralization related to bone turnover.

**Materials and Methods:** Nitric oxide inhibition of the extracts in lipopolysaccharide-stimulated RAW 264.7 macrophages was evaluated by Griess reagent, while the effects of extracts on osteoblast differentiations were measured by alkaline phosphatase in *p*-nitrophenyl phosphate. Their effects on mineralization was determined using alizarin red staining.

**Results:** The 70% ethanol and aqueous extracts inhibited cell inflammation (40% and 80%, respectively) and stimulated osteoblast differentiation (65% and 52%, respectively). In the mineralization test, the aqueous extract showed an effect two times higher than that of 70% ethanol extract.

**Conclusion:** The extracts can effectively degrade inflammatory marker expression and preserve osteoblast functions.

**Key words:** *Rusa unicolor*, antler, alkaline phosphatase, mineralization, nitric oxide inhibition

### ÖZ

**Amaç:** Osteoporoz artmış kemik kırılmalarıyla sonuçlanan kemik dokusundaki iskelet degradesyonu ile karakterize bir durumdur. Geleneksel olarak, Doğu Kalimantan'dan *Rusa unicolor* boynuzu kemik dönüşümü dahil, birçok hastalığın tedavisinde kullanılır. Bu çalışmanın amacı Doğu Kalimantan *R. unicolor* geyiği boynuzunun %70'lik etanol ve sulu ekstraktlarının nitrik oksit inhibisyonu, osteoblast farklılaşması ve kemik dönüşümüyle ilişkili mineralizasyon üzerine etkilerinin araştırılmasıdır.

**Gereç ve Yöntemler:** Ekstratların lipopolisakkarit ile stimüle edilen RAW 264,7 makrofajlarında nitrik oksit inhibisyonu Griess belirteciyle değerlendirilirken, ekstraktların osteoblast farklılaşması üzerine etkileri *p*-nitrofenil fosfata alkalik fosfataz ölçülerek belirlenmiştir. Mineralizasyon üzerine etkileri ise, alizarin kırmızısı kullanılarak belirlenmiştir.

**Bulgular:** %70'lik etanol ve sulu ekstraktlarının hücre enflamasyonunu inhibe ettiği (sırasıyla %40 ve %80) ve osteoblast farklılaşmasını stimüle ettiği (sırasıyla %65 ve %52) belirlenmiştir. Mineralizasyon testinde, sulu ekstre etanol ekstresine göre iki kat daha yüksek etki göstermiştir.

**Sonuç:** Ekstrelerin etkin bir şekilde enflamasyon belirteci ekspresyonunun degrades etmiş ve osteoblast işlevlerini korumaktadır.

**Anahtar kelimeler:** *Rusa unicolor*, geyik, alkalik fosfataz, mineralizasyon, nitrik oksit inhibisyonu

\*Correspondence: E-mail: rr-retno-w@ffunair.ac.id, Phone: +6281615886978 ORCID-ID: orcid.org/0000-0003-0572-7551

Received: 18.01.2019, Accepted: 30.05.2019

©Turk J Pharm Sci, Published by Galenos Publishing House.

## 10 INTRODUCTION

Osteoporosis is a bone condition characterized by skeletal degradation of osseous tissue leading to an increased chance of broken bones.<sup>1</sup> It is a condition of old age and supposed to increase with rising age and lifespan. At present, more than 200 million people worldwide are estimated to suffer from osteoporosis.<sup>2</sup> The latest statistical data from the International Osteoporosis Foundation showed that one in three women above 50 years old and one in five men shall suffer osteoporosis for the rest of their lives.<sup>3</sup> Indonesia also has the same problem, whereas the number of osteoporosis sufferers is higher than the latest data (>19.7%). In Indonesia, the number of old people is supposed to increase by 14% in 1990-2025, while menopausal women in 2000 contributed to an increase of 15.5 million to 24 million in 2015.<sup>4</sup>

For thousands of years, natural plants and animal resources have played a vital role in the development of pharmaceutical drugs and food supplements for the treatment and prevention of diseases.<sup>5</sup> One of such resources with great medicinal value is the antler of the deer belonging to the family Cervidae. It is an efficient traditional medicine for strengthening bones and tendons. Researchers assume that the lack of glycosaminoglycans caused disproportion between cartilage erosion and regeneration in osteoarthritis sufferers. These substances have an essential role in cartilage's structural integrity. Glycosaminoglycan is isolated from four parts of the antler of deer (*Cervus elaphus*), namely the tip, upper part, middle, and base, through cellulose acetate electrophoresis, enzymatic digestion, and chromatography. Chondroitin sulfate, which contains 88% uronic acid, is the principal glycosaminoglycan. Apart from chondroitin sulfate, deer antler also contains hyaluronic acid, dermatan sulfate, and keratan sulfate in small quantities.<sup>6</sup> Several researches also report that deer antler can reduce or even eradicate symptoms related to osteoarthritis.

For decades, Chinese people have traditionally used deer antler extract to strengthen bones, enhance virility, feed blood, supplement vitality, and enhance male and female sexual organs.<sup>7</sup> A good number of products analogous to deer antler show great potency on illnesses related to aging, infection, and immune dysfunction. However, the active constituents responsible for this mechanism are unclear.<sup>8-13</sup> According to some preclinical studies, deer antler products are able to reduce animals osteoporosis.<sup>14-16</sup> Lee et al.<sup>17</sup> showed that facilitation of osteoblast proliferation and mineralization are some of the principal mechanisms of the effects of deer antler products. Furthermore, Choi et al.<sup>18</sup> reported inhibition of osteoclast differentiation by deer antlers. Protein, calcium, lipids, ash, collagen, proteoglycan, testosterone, cholesterol, estradiol, glutamic acid, insulin-like growth factor 1, iron, aspartic acid, and glycine are some of the constituents contained in antler.<sup>19,20</sup>

In the present study, we evaluated 70% ethanol and aqueous extract of *Rusa unicolor* antler from East Kalimantan Indonesia toward the effect of osteoblast differentiation, mineralization, and expression of inflammatory markers by measuring alkaline phosphatase (ALP), alizarin red staining (ARS), and nitric oxide (NO) inhibition values, respectively.

## MATERIALS AND METHODS

### Cell culture and reagents

Chemicals such as an acid phosphatase leukocyte kit and ALP colorimetric assay kit were obtained from Sigma-Aldrich Co. (St Louis, MO, USA). Cell culture substances and solvents were bought from Thermo Fisher Scientific (Waltham, MA, USA) and were analytical grade (J.T. Baker, USA). Macrophages (RAW 264.7) and osteoblast cells (7F2) were obtained from the Food Industry Research and Development Institute, Taiwan, and refined in Dulbecco's Modified Eagle's Medium (DMEM). They were further strengthened with 10% v/v fetal bovine serum (FBS), 100 units/mL penicillin, and 100 µg/mL streptomycin. Cells were refined in an incubator with 5% CO<sub>2</sub> at 37°C.

### Antler materials

Deer antler of *R. unicolor* was collected in the middle of March 2017 in UPTD (Technical Implementation Service Unit) of East Kalimantan, Indonesia, and voucher specimens were deposited at the UPTD of East Kalimantan, Indonesia.

### *R. unicolor* antler extraction

*R. unicolor* antler was obtained from UPTD of East Kalimantan, Indonesia. It was powdered (991 g) and extracted with 70% ethanol-aqueous (2.0 Lx3) using maceration. The 70% ethanol solution was concentrated using a rotary evaporator to obtain 70% ethanol extract (Et-TL, 35.0 g). In addition, the deer antler (430 g) was extracted with 100% water (1.0 Lx3) by applying continuous percolation. The aqueous solution was freeze dried to obtain aqueous extract (A-TL, 6.1 g).

### Cell viability assay

The RAW 264.7 macrophages were cultured at a density of 5x10<sup>4</sup> macrophages/well in 96-well plates using DMEM consisting of 10% FBS, 100 units/mL penicillin, and 100 µg/mL streptomycin for macrophage growth studies. After 24 h, the samples (Et-TL and A-TL extracts of *R. unicolor* antler) were incubated at 10, 50, and 100 µg/mL for another 24 h. Afterwards, the medium was discarded and the macrophages were incubated with 200 µL of 3-(4,5-dimethylthiazol-2-yl)- and 100 µL of 2,5-diphenyltetrazolium bromide (MTT) reagents (100 µg/mL) for 4 h. Then 100 µL of dimethyl sulfoxide was added to disperse the formazan crystals. The absorbance was determined at 570 nm using an enzyme-linked immunosorbent assay (ELISA) reader. All treatments were carried out in triplicate and expressed in % macrophage viability of unprocessed control macrophages. A similar method was carried out on 7F2 osteoblast-like cells at 10<sup>4</sup> cells/well in DMEM containing 10% FBS, 100 units/mL penicillin, and 100 µg/mL streptomycin.<sup>21</sup>

### Nitrite measurement

The 5x10<sup>5</sup> cells/well of RAW 264.7 macrophages were seed in 24-well plates and incubated with DMEM containing 10% FBS, 100 unit/mL penicillin, and 100 µg/mL streptomycin for 24 h. The macrophages were activated with 500 ng/mL lipopolysaccharide (LPS) and evaluated with samples (Et-TL and A-TL extracts) at 10-100 µg/mL for 1 day. The emitted NO was estimated by weighing the nitrite concentration. Then 100

18  
 $\mu\text{L}$  of samples were added with 100  $\mu\text{L}$  of Griess reagent to 96-well plates for 15 min at room temperature. An ELISA reader was used to measure the absorbance at 550 nm. Furthermore, curves of standard calibration were processed using  $\text{NaNO}_2$  to evaluate nitrite expression of macrophages with sensitivity and linear range values of 2.5  $\mu\text{M}$  and 20-100  $\mu\text{M}$ , respectively.<sup>21</sup>

#### Differentiation of alkaline phosphatase activity

The  $10^4$  cells/well of 7F2 osteoblast cells were plated in 24-well plates using DMEM containing 10% FBS, 50  $\mu\text{g}/\text{mL}$  ascorbic acid, and 5 mM  $\beta$ -glycerol phosphate ( $\beta$ -GP) with or without 10-100  $\mu\text{g}/\text{mL}$  Et-TL and A-TL extracts for 4 days of incubation (37°C in a 5%  $\text{CO}_2$  atmosphere). Phosphate buffer saline (PBS) was used to wash the extracted supernatants. After that, a percentage of v/v triton solution was added, followed by incubation for 10 min at 37°C. For the ALP assay, the cell lysates were added with 200  $\mu\text{L}$  of *p*-nitrophenyl phosphate and di-ethanolamine buffer to each well for 30 min at room temperature. Then 50  $\mu\text{L}/\text{well}$  NaOH solution was added to end the reaction, while an ELISA reader at 405 nm was used to evaluate the absorbance.<sup>21</sup>

#### Mineralization of the extracellular matrix

One milliliter of DMEM comprising 5 mM  $\beta$ -GP, 50  $\mu\text{g}/\text{mL}$  ascorbic acid (2GF medium), and 10% FBS was used to seed  $10^4$  cells/well of 7F2 osteoblast cells for 7 days in an incubator; 10-100  $\mu\text{g}/\text{mL}$  of Et-TL and A-TL extracts were also added to the growth medium. After 7 days, PBS and 75% v/v ethanol were used to wash the samples and they were dried at room temperature. The cells were dyed with 200  $\mu\text{L}$  of 1% ARS for 1 h. A Nikon TI-E microscope and SPOT RT3 camera were used to record images of the cell morphology. Each well received 10% w/v cetylpyridinium chloride (400  $\mu\text{L}$ ) and was rocked for 10 min in order to disperse the calcium. The absorbance was finally evaluated at 560 nm using an ELISA reader.<sup>21</sup>

#### Statistical analysis

The experiments were carried out for three more consecutive times with similar sample. They are presented as mean  $\pm$  standard deviations. The paired t-test was used for the data analysis. The differences were significant at  $p < 0.05$ .

## RESULTS

#### The effect of antler extract on cell viability and nitric oxide production

In the present research, the effects of Et-TL and A-TL extracts against inflammation associated with bone turnover were analyzed. Several researchers have reported the bioactivity impacts of deer bones and antlers from various nations, but there is no information on the pharmacological activity of deer antlers originating from Indonesia (*R. unicolor*).<sup>7,22-24</sup>

Cytotoxic test samples (Et-TL and A-TL extracts) at different concentrations were incubated with RAW 264.7 macrophages for 1 day and were evaluated using the MTT method. Then the data were represented as the average cell viability. The A-TL extract did not show cytotoxicity compared to Et-TL

extracts (Figure 1), while the macrophage viability in Et-TL extracts (50 and 100  $\mu\text{g}/\text{mL}$ ) decreased significantly. Thus, the aqueous extract was not toxic toward the macrophages at the concentration series of 10-100  $\mu\text{g}/\text{mL}$  and was able to increase the cellular permeation of constituents therein.<sup>24</sup>

The anti-inflammatory test of samples in RAW 264.7 macrophages stimulated by LPS was conducted by monitoring the NO inhibition. The Griess reagent was used to evaluate the nitrite value directly related to the amount of NO production in RAW 264.7 macrophages. These macrophages were treated with samples, after which the NO produced in the LPS-stimulated RAW 264.7 macrophages deteriorated significantly (Figure 2). The Et-TL extract prevented NO production up to 40% in 10  $\mu\text{g}/\text{mL}$ . Similarly, A-TL extract reduced it up to 80% in the same concentration. LPS (500 ng/mL) in macrophages was not used as a control group because it had a total nitrite value of 100%.

#### The effect on ALP stimulation of 7F2 osteoblasts of 70% ethanol and aqueous extracts of deer antler

The effect of samples (Et-TL and A-TL extracts) on 7F2 osteoblastic cell line proliferation was determined by MTT test. The viability of cells in Et-TL extract decreased significantly (50

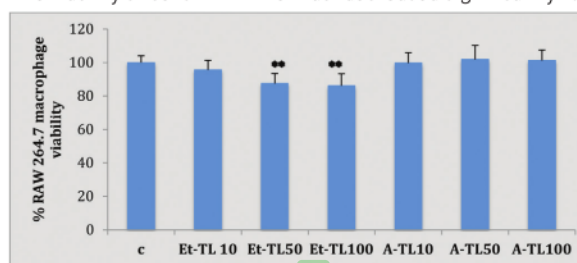


Figure 1. The effects of samples at 10, 50, and 100  $\mu\text{g}/\text{mL}$  on RAW 264.7 macrophage viability; C was the control medium without samples, Et-TL was 70% ethanol extract, A-TL was aqueous extract. Data are shown as the average of % cell viability to control for 24 h  $\pm$  standard deviation

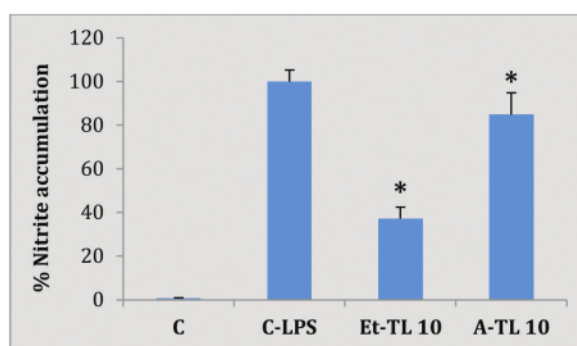


Figure 2. The effects of samples at 10  $\mu\text{g}/\text{mL}$  on NO production in LPS (500 ng/mL)-induced RAW 264.7 macrophages for 24 h; C-LPS was control of LPS, C was cells of the control group were not induced with LPS, Et-TL was 70% ethanol extract, A-TL was aqueous extract. The total nitrite produced by the cells of the LPS group is revealed as 100%. Results are shown as % of average  $\pm$  standard deviation. \* $p < 0.05$  with respect to control  
 NO: Nitric oxide LPS: Lipopolysaccharide



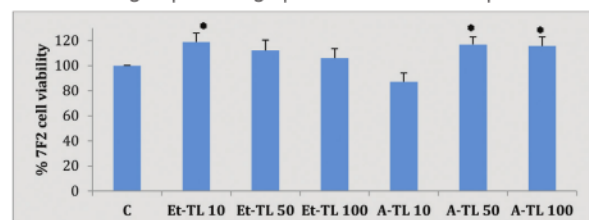
and 100 µg/mL), but the value was more than 100%. It showed that a high concentration of Et-TL extract was not toxic even though the cell proliferation value decreased. On the other hand, cell viability of A-TL extract increased significantly (Figure 3). As a result, all deer antler extracts decreased cytotoxicity and raised cellular uptake. Then the ALP and mineralization experiments continued.

The ALP stimulated 7F2 osteoblast cells using Et-TL and A-TL extracts of deer antler were incubated for 4 days. The effects of test samples on the ALP assay increased in the 7F2 osteoblasts as opposed to the 2GF group. After 4 days, the A-TL and Et-TL extracts stimulated ALP activity to 65% and 52%, respectively (Figure 4).

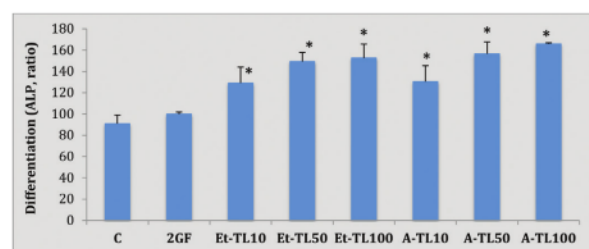
#### The effect on mineralization of 7F2 osteoblasts of 70% ethanol and aqueous extracts of deer antler

The 7F2 osteoblast cells were cultured in 2GF medium to prompt osteoblast differentiation and mineralization. After 7 days of incubation, the effects of Et-TL and A-TL extracts of deer antler on osteoblast mineralization were examined using ARS, which determined the calcium content in the bone matrix. The Et-TL extract displayed stimulation of cell differentiation (Figure 4) and after 7 days this extract stimulated mineralization. The A-TL extract displayed better stimulation mineralization than 70% ethanol extract of deer antler (Figure 5).

The stains on ARS represented mineral deposits and were quantified by cetylpyridinium chloride extraction. The treated 7F2 osteoblast cells increased the ARS accumulation compared to the 2GF group. Photographs were used to represent the



**Figure 3.** The effects of samples at 10, 50, and 100 µg/mL on 7F2 cell viability; C was medium without sample, Et-TL was 70% ethanol extract, A-TL was aqueous medium extract. Data are shown as the average of % cell viability compared to control for 24 h ± standard deviation

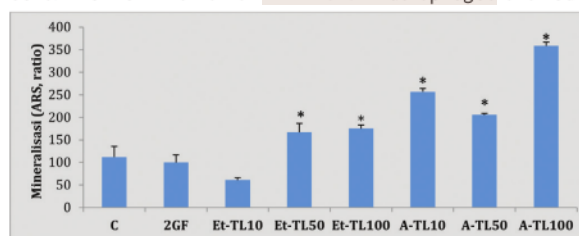


**Figure 4.** The effects of samples at 10, 50, and 100 µg/mL on osteoblast differentiation (ALP) during 4 days of incubation; Et-TL was 70% ethanol extract, A-TL was aqueous medium extract. The 7F2 osteoblast cells were cultured in 2GF medium to produce osteoblast differentiation. Results are shown as % with average ± standard deviation. \*p<0.05 with respect to 2GF ALP: Alkaline phosphatase

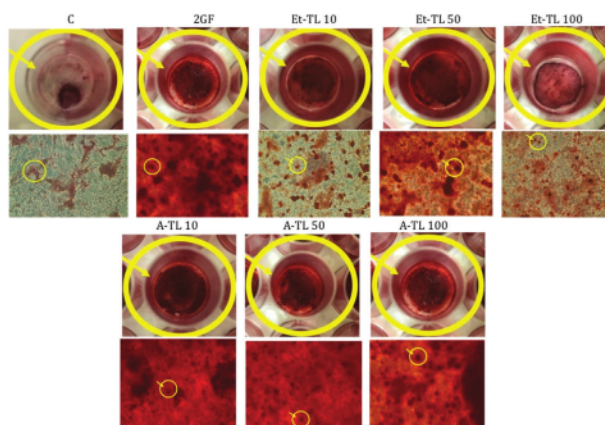
mineralization process of osteoblast cells under a bright field. Mineralized nodule formation (red) was high in 7F2 osteoblast cells treated with Et-TL and A-TL extracts on day 7 under microscope observation (Figure 6). Identical patterns were also observed in ALP activity.

## DISCUSSION

Bone metabolism is a lifelong process that occurs because mature bone tissue is lost (osteoclast activity) and new bone tissue is formed (osteoblast activity). Osteoclasts are multinucleated cells and involve nuclear factor kappa-B ligand (RANKL) as a stimulus of receptors and generated by macrophage precursor cells. The RAW 264.7 macrophages have a necessary role in the process of osteoclast formation and function.<sup>25</sup> Osteoclast function can be impaired due to degeneration of articular cartilage and synovial inflammation involving tumor necrosis factor- $\alpha$ , chemokines, and a number of inflammatory cytokines and interleukins (IL) such as IL-1 $\beta$ , IL-6, IL-11, and IL-17. They cause bone loss by reducing osteoprotegerin (OPG) production and stimulating RANKL expression in osteoblasts and stromal cells. The NO inhibition of RAW 264.7 macrophages showed a



**Figure 5.** The effects of samples at 10, 50, and 100 µg/mL on quantification mineralization assay during 7 days of incubation; Et-TL was 70% ethanol extract, A-TL was aqueous medium extract. ARS dye was measured by cetylpyridinium chloride extraction. The results are shown as % with average ± standard deviation. \*p<0.05 with respect to 2GF ARS: Alizarin red staining



**Figure 6.** Histochemical staining of mineral deposition of samples at 10, 50, and 100 µg/mL; Et-TL was 70% ethanol extract, A-TL was aqueous medium extract. They were visualized using ARS staining (100x magnification). Red staining represents mineral deposition ARS: Alizarin red staining

decrease in cytokine inflammation, thus preventing bone loss by escalating RANKL and OPG levels.<sup>21</sup>

NO inhibition through the p38, JNK, and NF- $\kappa$ B signaling pathways' retardation is associated with inflammatory response inhibition and osteoclastogenesis suppression. Yeh et al.<sup>21</sup> showed that Cur liposomes, as samples, inhibited NO production in RAW 264.7 macrophages and prevented osteoclast differentiation by increasing the OPG/RANKL ratio and decreasing cathepsin K regulation and tartrate-resistant acid phosphatase expression. The high NO inhibition and OPG/RANKL ratio lead to a reduction in osteoclast activation and a rise in the number of osteoblasts, so that the effect of osteoporosis can be reduced.

In the present study, we evaluated the NO production of 70% ethanol and aqueous extracts in LPS-stimulated RAW 264.7 macrophages. LPS markedly stimulated NO production in these macrophages compared to in the control group. The 70% ethanol extract of deer antler showed a higher reaction rate in lowering LPS-stimulated RAW 264.7 than that of aqueous extract (Figure 2). Neither of them had any cytotoxic effect on RAW 264.7 macrophages (Figure 1). According to Choi et al.<sup>26</sup> the ability of the methanol fraction from deer bone in reducing NO production was the result of decreased regulation and expression of mRNA from pro-inflammatory agents, such as IL-1 $\beta$ , IL-12 $\beta$ , and cyclooxygenase. The methanol fraction containing sugar played an essential part in lowering reactions of inflammatory by managing agents and pro-inflammatory cytokines. Pro-inflammatory cytokine production in large quantities can be found in several conditions, such as arthritis, rheumatoid arthritis, osteoarthritis, osteoporosis, and cancer.<sup>27,28</sup>

The osteoblast phenotype for bone mineralization is obtained in two phases. In the first phase the mature contents and characteristic protein related to the bone cell phenotype such as ALP are detected and in the second phase the contents are mineralized by calcium deposition. A spongy bone layer is formed around the original cartilage and the space between the spongy bones is loaded with bone content and becomes solid bone.

Deer antler is able to stimulate osteoblast proliferation and protein contents in bone such as collagen type 1 and bone sialoprotein and so the antler can trigger osteoblast differentiation through mineralized nodule formation. As expected, the 70% ethanol and aqueous extracts of deer antler increased ALP activity constantly (Figure 4). The result is similar to that in the research reported by Lee et al.<sup>17</sup> in which cells plated in media with aqueous extract had more ALP activity than the 70% ethanol extract. Deer antler significantly increased osteoblast proliferation until 119% of the basic value, stimulated expression of mRNA and ALP activity in the range of 50-100  $\mu$ g/mL, and increased type 1 collagen mRNA expression and mineralization to be more than 183%.<sup>17</sup>

Interestingly, ALP has been proven to be an enzyme that plays an essential role in the mineralization process. Human bone abnormalities and hypophosphatasia can occur due to the absence of expression of ALP bone form<sup>29,30</sup> and described by a

lack of bone mineral deposition (rickets). ALP is important for mineralization but its purpose has not yet been fully clarified. We continued to evaluate the effect of 70% ethanol and aqueous extracts of deer antler on mineralization activity (Figure 5).

The new bone tissue formed will be implicated in the mechanism of osteoblast proliferation, osteoblast differentiation, and mineralization. The 7F2 osteoblast cells started differentiating on day 4. The ALP assay is displayed as an initial term marker of differentiated cells. Then the mineralization of 7F2 osteoblast cells produced by ARS was monitored. Figure 6 shows that the extracts stimulated the mineralization of 7F2 osteoblast cells. The stimulation of aqueous extract at 100  $\mu$ g/mL was two times higher than that of 70% ethanol extract. This difference may be as a result of a reduction in deer antler extract toxicity or chemical constituents in both extracts.

## CONCLUSION

The 70% ethanol and aqueous extracts of *R. unicolor* antler from Kalimantan had a role in bone remodeling. The aqueous extract stimulated higher bone differentiation and mineralization than the 70% ethanol extract with an ALP value of 65% and twice the ARS value. However, the 70% ethanol extract displayed higher NO inhibition activity than aqueous extract with an inhibition value of 40%. Therefore, the extracts can be considered to effectively degrade inflammatory marker expression in osteoblasts and preserve osteoblast functions.

## ACKNOWLEDGMENTS

This research was supported by Airlangga University (No. 886/UN3/2018) and was a collaboration between the Faculty of Pharmacy Airlangga University, UPTD of East Kalimantan, and National Chiayi University Taiwan.

*Conflict of Interest:* No conflict of interest was declared by the authors.

## REFERENCES

- Jennifer JW. Methods in molecular biology: Osteoporosis methods and protocol, Human Press; 2008.
- Cooper C, Campion G, Melton LJ 3<sup>rd</sup>. Hip fractures in the elderly: a world-wide projection. *Osteoporos Int.* 1992;2:285-289.
- Kanis JA, Johnell O, Oden A, Sembo I, Redlund-Johnell I, Dawson A, De Laet C, Jonsson B. Long-term risk of osteoporotic fracture in Malmö. *Osteoporos Int.* 2000;11:669-674.
- Sudoyo SA, Simadibrata S. Osteoporosis. Buku ajar ilmu penyakit dalam II, 4<sup>th</sup> ed. Jakarta, FKUI; 2006.
- Megraj KVK, Raju K, Balaraman R, Meenakshisundaram K. Biological activities of some Indian medicinal plants. *JAPER.* 2011;1:12-44.
- Sunwoo HH, Nakano T, Hudson RJ, Sim JS. Isolation, characterization and localization of glycosaminoglycans in growing antlers of wapiti (*Cervus elaphus*). *Comp Biochem Physiol B Biochem Mol Biol.* 1998;120:273-283.
- Kawtikwar PS, Bhagwat DA, Sakarkar DM. Deer antler-traditional use and future perspectives. *Indian J Tradit Knowl.* 2010;9:245-251.

8. Mikler JR, Theoret CL, High JC. Effects of topical elk velvet antler on cutaneous wound healing in streptozotocin-induced diabetic rats. *J Altern Complement Med.* 2004;10:835-840.
9. Shi B, Li G, Wang P, Yin W, Sun G, Wu Q, Yu G. Effect of antler extract on corticosteroid-induced a vascular necrosis of the femoral head in rats. *J Ethnopharmacol.* 2010;127:124-129.
10. Dai TY, Wang CH, Chen KN, Huang IN, Hong WS, Wang SY, Chen YP, Kuo CY, Chen MJ. The antiinfective effects of velvet antler of Formosan Sambar Deer (*Cervus unicolor* Swinhoei) on *Staphylococcus aureus*-infected mice. *Evid Based Complement Alternat Med.* 2011;2011:534069.
11. Zhang Z, Liu X, Duan L, Li X, Zhang Y, Zhou Q. The effects of velvet antler polypeptides on the phenotype and related biological indicators of osteoarthritic rabbit chondrocytes. *Acta Biochim Pol.* 2011;58:297-302.
12. Kuo CY, Wang T, Dai TY, Wang CH, Chen KN, Chen YP, Chen MJ. Effect of the velvet antler of Formosan Sambar Deer (*Cervus unicolor* Swinhoei) on the prevention of an allergic airway response in mice. *Evid Based Complement Alternat Med.* 2012;2012:481318.
13. Shao MJ, Wang SR, Zhao MJ, Lv XL, Xu H, Li L, Gu H, Zhang JL, Li G, Cui XN, Huang L. The effects of velvet antler of deer on cardiac functions of rats with heart failure following myocardial infarction. *Evid Based Complement Alternat Med.* 2012;2012:825056.
14. Meng HY, Qu XB, Li N, Yuan S, Lin Z. Effects of pilose antler and antler glue on osteoporosis of ovariectomized rats. *Zhong Yao Cai.* 2009;32:179-182.
15. Li Y, Zhao Y, Tang R, Qu X. Preventive and therapeutic effects of antler collagen on osteoporosis in ovariectomized rats. *Afr J Biotechnol.* 2010;9:6437-6441.
16. Yang JH, Cao Y, Wang RL, Fei YR, Zhang H, Feng P, Liu J. Anti-resorptive effect of pilose antler blood (*Cervus nippon* Temminck) in ovariectomized rats. *Indian J Exp Biol.* 2010;48:554-558.
17. Lee HS, Kim MK, Kim YK, Jung EY, Park CS, Woo MJ, Lee SH, Kim JS, Suh HJ. Stimulation of osteoblastic differentiation and mineralization in MC3T3-E1 cells by antler and fermented antler using *Cordyceps militaris*. *J Ethnopharmacol.* 2011;133:710-717.
18. Choi SW, Moon SH, Yang HJ, Kwon DY, Son YJ, Yu R, Kim YS, Kim SI, Chae EJ, Park SJ, Kim SH. Antiresorptive activity of bacillus-fermented antler extracts: inhibition of osteoclast differentiation. *Evid Based Complement Alternat Med.* 2013;2013:748687.
19. Jeon B, Kim S, Lee S, Park P, Sung S, Kim J, Moon S. Effect of antler growth period on the chemical composition of velvet antler in sika deer (*Cervus nippon*). *Mamm Biol.* 2009;74:374-380.
20. Tseng SH, Sung HC, Chen LG, Lai YJ, Wang KT, Sung CH, Wang CC. Effects of velvet antler with blood on bone in ovariectomized rats. *Molecules.* 2012;17:10574-10585.
21. Yeh CC, Su YH, Lin YJ, Chen PJ, Shi CS, Chen CN, Chang HI. Evaluation of the protective effects of curcuminoid (curcumin and bisdemethoxycurcumin)-loaded liposomes against bone turnover in a cell-based model of osteoarthritis. *Drug Des Dev Ther.* 2015;9:2285-2300.
22. Kuo CY, Cheng YT, Ho ST, Yu CC, Cheng MJ. Comparison of anti-inflammatory effect and protein profile between the water extracts from Formosan sambar deer and red deer. *J Food Drug Anal.* 2018;26:1275-1282.
23. Wu F, Li H, Jin L, Li X, Ma Y, You J, Li S, Xu Y. Deer antler base as a traditional Chinese medicine: a review of its traditional uses, chemistry and pharmacology. *J Ethnopharmacol.* 2013;145:405-415.
24. Suh HJ, Lee H, Min BJ, Jung SU, Jung EY. Effects of gangliosides from deer bone extract on the gene expressions of matrix metalloproteinases and collagen type II in interleukin-1 $\beta$ -induced osteoarthritic chondrocytes. *Nutr Res Pract.* 2016;10:569-574.
25. Collin-Osdoby P, Osdoby P. RANKL-mediated osteoclast formation from murine RAW 264.7 cells. *Methods Mol Biol.* 2012;816:187-202.
26. Choi HS, Im S, Park Y, Hong KB, Suh HJ. Deer bone oil extract suppresses lipopolysaccharide-induced inflammatory responses in RAW 264.7 cells. *Biol Pharm Bull.* 2016;39:595-600.
27. Landskron G, De la Fuente M, Thuwajit P, Thuwajit C, Hermoso MA. Chronic inflammation and cytokines in the tumor microenvironment. *J Immunol Res.* 2014;2014:149-185.
28. McInnes IB, Schett G. Cytokines in the pathogenesis of rheumatoid arthritis. *Nat Rev Immunol.* 2007;7:429-442.
29. Caswell AM, Russell RG. Identification of ecto-nucleoside triphosphate pyrophosphatase in human articular chondrocytes in monolayer culture. *Biochem Biophys Acta.* 1985;847:40-47.
30. Chuck AJ, Patrick MG, Hamilton E, Wilson R, Doherty M. Crystal deposition in hypophosphatasia: a reappraisal. *Ann Rheum Dis.* 1989;48:571-576.

# The Effect of Rusa unicolor Antler Deer Extracts from East Kalimantan in Bone Turnover Cell Models

## ORIGINALITY REPORT

12%

SIMILARITY INDEX

5%

INTERNET SOURCES

12%

PUBLICATIONS

0%

STUDENT PAPERS

## PRIMARY SOURCES

- 1** Zhe Jin, Jiaan Ren, Shanlun Qi. "Human bone mesenchymal stem cells-derived exosomes overexpressing microRNA-26a-5p alleviate osteoarthritis via down-regulation of PTGS2", *International Immunopharmacology*, 2020  
Publication 1%
- 2** Fereshteh Vajhadin, Mohammad Mazloun-Ardakani, Bikash R. Sahoo, Seyed Mohammad Moshtaghioun, Martin C. Hartel. "Hierarchal polyaniline-folic acid nanostructures act as a platform for electrochemical detection of tumor cells", *Analytical Biochemistry*, 2022  
Publication 1%
- 3** Hyun-Sun Lee, Min Kyung Kim, Yoo-Kyung Kim, Eun Young Jung et al. "Stimulation of osteoblastic differentiation and mineralization in MC3T3-E1 cells by antler and fermented antler using *Cordyceps militaris*", *Journal of Ethnopharmacology*, 2011  
Publication 1%



4

Kimihiro Igari, Matthew J. Kelly, Dai Yamanouchi. "Cigarette Smoke Extract Activates Tartrate-Resistant Acid Phosphatase-Positive Macrophage", *Journal of Vascular Research*, 2019

Publication

---

1 %

5

Young-Jin Choi, Meiqi Fan, Yonghai Yu, Xiaoli Wang, Yujiao Tang, Eun-Kyung Kim. "Sika deer (*Cervus nippon*) velvet antler ameliorates 2,4-dinitrochlorobenzene-induced atopic dermatitis-like clinical signs in a rodent model", *Animal Production Science*, 2020

Publication

---

1 %

6

Fengqiu Ma, Yan Ma, Keke Liu, Junying Gao, Shasha Li, Xiaowen Sun, Guorong Li. "Resveratrol induces DNA damage-mediated cancer cell senescence through the DLC1–DYRK1A–EGFR axis", *Food & Function*, 2023

Publication

---

&lt;1 %

7

Su Cheol Baek, Dahae Lee, Mun Seok Jo, Kwang Ho Lee, Yong Hoon Lee, Ki Sung Kang, Noriko Yamabe, Ki Hyun Kim. "Inhibitory Effect of 1,5-Dimethyl Citrate from Sea Buckthorn (*Hippophae rhamnoides*) on Lipopolysaccharide-Induced Inflammatory Response in RAW 264.7 Mouse Macrophages", *Foods*, 2020

Publication

---

&lt;1 %

8

[docksci.com](http://docksci.com)

Internet Source

&lt;1 %

9

[eprints.whiterose.ac.uk](http://eprints.whiterose.ac.uk)

Internet Source

&lt;1 %

10

Takahiko Usui. "Association of a single nucleotide polymorphism in Wnt10b gene with bone mineral density", *Geriatrics & Gerontology International*, 3/2007

Publication

&lt;1 %

11

Edible Medicinal and Non-Medicinal Plants, 2016.

Publication

&lt;1 %

12

H. H. Sunwoo, T. Nakano, J. S. Sim. " Effect of water-soluble extract from antler of wapiti ( ) on the growth of fibroblasts ", *Canadian Journal of Animal Science*, 1997

Publication

&lt;1 %

13

Md. Ashrafur Hasan, Md. Tipu Sultan, Won-Gyun Ahn, Yeon-Ja Kim, Ji-Hye Jang, Chang-Won Hong, Dong-Keun Song. "Scant Extracellular NAD Cleaving Activity of Human Neutrophils is Down-Regulated by fMLP via FPRL1", *The Korean Journal of Physiology & Pharmacology*, 2014

Publication

&lt;1 %

14

H. H. Sunwoo, L. Y. M. Sim, T. Nakano, R. J. Hudson, J. S. Sim. " Glycosaminoglycans from

&lt;1 %

growing antlers of wapiti ( ) ", Canadian Journal of Animal Science, 1997

Publication

---

15

Bo-Wei Lai, Yin-Yu Chang, Tzong-Ming Shieh, Heng-Li Huang. "Biocompatibility and Microstructure-Based Stress Analyses of TiNbZrTa Composite Films", Materials, 2021

Publication

---

<1 %

16

Chunjie Ding, Shan Hong, Miao Zhang, Yunzhe Sun, Ning Li, Jing Zhang, Lan Ma, Linqiang Tian, Wenjie Ren, Lin Zhang, Sanqiao Yao. "Establishment and evaluation of an in vitro blast lung injury model using alveolar epithelial cells", Frontiers in Public Health, 2022

Publication

---

<1 %

17

Indran, Inthrani Raja, Ryan Lim Zhen Liang, Tan Ee Min, and Eu-Leong Yong. "Preclinical studies and clinical evaluation of compounds from the genus Epimedium for osteoporosis and bone health", Pharmacology & Therapeutics, 2016.

Publication

---

<1 %

18

M.A. Sunil, V.S. Sunitha, A. Ashitha, Sahadevan Neethu, Sebastian J. Midhun, E.K. Radhakrishnan, Mathew Jyothis. "Catechin rich butanol fraction extracted from Acacia catechu L. (a thirst quencher) exhibits

<1 %

immunostimulatory potential", Journal of Food and Drug Analysis, 2019

Publication

19

anndermatol.org

Internet Source

<1 %

20

John A. Hamilton. "The dynamics of macrophage lineage populations in inflammatory and autoimmune diseases", Arthritis & Rheumatism, 05/2009

Publication

<1 %

21

Li-Li Jiang, Cheuk-Lun Liu, Yuk-Lau Wong, Chun-Fong Nip, Pang-Chui Shaw. "Differentiation of deer tendons from cattle tendons by a loop-mediated isothermal amplification (LAMP) test and bone remodeling bioassays", Chinese Medicine, 2015

Publication

<1 %

22

Yan Huang, Haokun Deng, Yubo Fan, Lisha Zheng, Jifei Che, Xiaoming Li, Katerina E. Aifantis. "Conductive nanostructured Si biomaterials enhance osteogenesis through electrical stimulation", Materials Science and Engineering: C, 2019

Publication

<1 %

23

Boanini, Elisa, Silvia Panseri, Fabiola Arroyo, Monica Montesi, Katia Rubini, Anna Tampieri, Cristian Covarrubias, and Adriana Bigi.

<1 %



"Alendronate Functionalized Mesoporous Bioactive Glass Nanospheres", Materials, 2016.

Publication

---

24

Chaekyun Kim, Seongtag Kim. "Chapter 49 Taurine Chloramine Inhibits LPS-Induced Glucose Uptake", Springer Science and Business Media LLC, 2009

Publication

---

<1 %

25

Hangalapura, B.N.. "Cold stress equally enhances in vivo pro-inflammatory cytokine gene expression in chicken lines divergently selected for antibody responses", Developmental and Comparative Immunology, 2006

Publication

---

<1 %

26

Hyung Sim Choi, Jun Woo Kim, Young - Nam Cha, Chaekyun Kim. "A Quantitative Nitroblue Tetrazolium Assay for Determining Intracellular Superoxide Anion Production in Phagocytic Cells", Journal of Immunoassay and Immunochemistry, 2006

Publication

---

<1 %

27

Jaw-Chyun Chen, Chien-Yun Hsiang, Yung-Chang Lin, Tin-Yun Ho. "Deer Antler Extract Improves Fatigue Effect through Altering the Expression of Genes Related to Muscle Strength in Skeletal Muscle of Mice",

<1 %

# Evidence-Based Complementary and Alternative Medicine, 2014

Publication

---

28

Shaheed Rehman, Kevin Choe, Hye Yoo. "Review on a Traditional Herbal Medicine, Eurycoma longifolia Jack (Tongkat Ali): Its Traditional Uses, Chemistry, Evidence-Based Pharmacology and Toxicology", *Molecules*, 2016

Publication

---

<1 %

29

Yanhua Tu, Yingru Xue, Dandan Guo, Lianna Sun, Meili Guo. "Carthami flos: a review of its ethnopharmacology, pharmacology and clinical applications", *Revista Brasileira de Farmacognosia*, 2015

Publication

---

<1 %

30

[koreascience.or.kr](http://koreascience.or.kr)

Internet Source

---

<1 %

31

Dryden, G. McL.. "Nutrition of antler growth in deer", *Animal Production Science*, 2016.

Publication

---

<1 %

32

Giuseppe Mangialardi, Atsuhiko Oikawa, Carlotta Reni, Paolo Madeddu. "Bone Marrow Microenvironment: A Newly Recognized Target for Diabetes- Induced Cellular Damage", *Endocrine, Metabolic & Immune Disorders - Drug Targets*, 2012

Publication

---

<1 %

33

M.A. Sunil, V.S. Sunitha, A. Ashitha, Sahadevan Neethu, Sebastian J. Midhun, E.K. Radhakrishnan, Mathew Jyothis. "Catechin rich butanol fraction extracted from *Acacia catechu* L. (a thirst quencher) exhibits immunostimulatory potential", *Journal of Food and Drug Analysis*, 2018

Publication

&lt;1 %

34

Seong-Hee MOON, Sang Hee JI, Ju-Lee SON, Seong-Jin SHIN, Seunghan OH, Seong Hwan KIM, Ji-Myung BAE. "Antibacterial, anti-inflammatory, and anti-osteoclastogenic activities of *Colocasia antiquorum* var. *esculenta*: Potential applications in preventing and treating periodontal diseases", *Dental Materials Journal*, 2020

Publication

&lt;1 %

35

Sinhwa Baek, Cho I Park, Yun Gyeong Hwang, Hyejin Jeon et al. "Enzyme-derived deer velvet extract activate the immune response in cyclophosphamide-induced immunosuppressive mice", *Food Science and Biotechnology*, 2023

Publication

&lt;1 %

36

[www.kjim.org](http://www.kjim.org)

Internet Source

&lt;1 %

37

Yasuhide Kitagawa, Jinlu Dai, Jian Zhang, Jill M. Keller, Jacques Nor, Zhi Yao, Evan T. Keller.

&lt;1 %

# "Vascular Endothelial Growth Factor Contributes to Prostate Cancer-Mediated Osteoblastic Activity", Cancer Research, 2005

Publication

---

---

Exclude quotes      Off

Exclude matches      Off

Exclude bibliography      On



# The Effect of Rusa unicolor Antler Deer Extracts from East Kalimantan in Bone Turnover Cell Models

---

GRADEMARK REPORT

---

FINAL GRADE

**/0**

GENERAL COMMENTS

**Instructor**

---

PAGE 1

---

PAGE 2

---

PAGE 3

---

PAGE 4

---

PAGE 5

---

PAGE 6

---