

Phylogenetic tree banyuwangi 2020

by Sapto Andriyono

Submission date: 09-Jan-2023 04:21PM (UTC+0800)

Submission ID: 1990113091

File name: 2.pdf (578.51K)

Word count: 5443

Character count: 30257



Molecular Identification and Phylogenetic Tree Reconstruction of Marine Fish from the Essential Wetland Area of Banyuwangi, Indonesia

Sapto Andriyono^{1*} and Suciyono Suciyo²

¹Department of Marine, Fisheries and Marine Faculty, C Campus Jl. Mulyorejo Surabaya.
Universitas Airlangga, Surabaya 60115, East Java, Indonesia.

²Department of Fish Health Management and Aquaculture, Fisheries and Marine Faculty,
PSDKU. Universitas Airlangga, Banyuwangi 68425, East Java, Indonesia
*sapto.andriyono@fpk.unair.ac.id

ARTICLE INFO

Article History:

Received: March 23, 2020

Accepted: April 11, 2020

Online: April 14, 2020

Keywords:

Molecular identification,
Marine fish,
Banyuwangi,
Pangpang Bay,
Indonesia

ABSTRACT

Pangpang Bay is necessary to get serious attention because it is one of the essential wetlands in Banyuwangi, Indonesia. This area able to generate income for traditional fishers and ecological supports the surrounding area because it is possible to be a spawning area and nursery ground for many estuary fish. The identification of fisheries resources is carried out using a molecular approach in the Cytochrome oxidase subunit I (COI) region that is commonly used in barcoding. Identification with this method is expected to minimize errors in determining the name of the species of species that exist in Pangpang Bay. Based on molecular identification information in the COI region, 37 marine fish species were distributed in 25 families, and 4 orders. The results of this study are the initials of molecular information on fisheries resources in the Pangpang Bay area.

INTRODUCTION

Pangpang Bay is in the region of the Banyuwangi Regency, which is directly bordered by the waters of the Bali Strait and the Indian Ocean. There is a massive potential in this region, including the capture fisheries, fisheries processing, aquaculture, and the presence of mangrove ecosystems (Buwono *et al.*, 2015; Kawamuna *et al.*, 2017 and Raharja *et al.*, 2014). However, the pattern of resource utilization that has not been appropriately managed causes environmental problems such as a decrease in water quality due to the disposal of organic waste in the fisheries industry without processing (Anugrah, 2013), overfishing status in the sardine fisheries, deforestation of mangrove forests for ponds as well as urban development activities, declining pond production, and coastal area abrasion.

Currently, the Indonesian government is conducting a study by setting several areas to become the development areas for fishery products as Minapolitan, through the

Decree of the Minister of Maritime Affairs and Fisheries No.32/MEN/2010 (Suryawati and Purnomo, 2017). One of the Minapolitan is the Muncar sub-district, which located in Banyuwangi. This area is made as one of the most potential minapolitan capture fisheries locations with consideration in several aspects. Muncar is showing potential fishery commodities, strategic geographical location, and having production chains (upstream-downstream) that are already running well. Another hand, Muncar also has adequate main supporting facilities such as transportation and communication facilities, as well as environmental feasibility and local government support. Before the Muncar was established as a minapolitan in 2010, the community had relied on fish resources that had developed since the mid-60s (Wiratama, 2012). This condition can be seen from a number of studies exploring the Muncar area relating to the use of traditional fishing technologies. In its development, purse-seines were introduced by the Marine Fisheries Research Institute (BPPL) in the 1972s and continues to be used today (Perkasa *et al.*, 2016).

In connection with this tremendous potential of water resources, the government (Ministry of Forestry) has determined the Pangpang bay area to be an essential area that has synergistic ecological and economic roles (Setyaningrum, 2017). Balanced management and utilization efforts are expected to facilitate the community around the Pangpang Bay area, which is almost entirely dependent on the existence of these water resources. In this study, the initial information in management is the collection of a database of fisheries resources owned by this region. The morphological approach in identifying fish and the combination of molecular methods to reduce errors in fish identification in the Pangpang Bay area has been carried out. Previous studies have not found data that specifically inventory fish species in this area. Much research has been done on mangrove vegetation and aquatic fauna that are not specifically on fish species (Buwono *et al.*, 2015 and Buwono, 2017). Information on the results of this study is essential for related research to the genetic and biological diversity of fisheries in economically important marine fish species obtained from this crucial region, as well as being the basis for formulating policies in sustainable management.

The molecular identification can be called DNA barcoding. This DNA barcoding method has been agreed globally to ensure the identification of both plant and animal species, either fresh samples or processed product samples (Pepe *et al.*, 2007 and Giusti *et al.*, 2017). DNA barcoding efforts on aquatic biota have been carried out and are currently receiving a lot of attention, especially efforts to increase the database on GenBank. Compared to the morphological identification method, DNA barcoding has an accuracy that is close to 100% matched (Meyer and Paulay, 2005). A single region of mitochondrial DNA Cytochrome C Subunit I gene (COI) that will be deposited in the Genbank database as central bioinformatics becomes the gene marker that is used as the basis for DNA barcoding. Scientists have proven their effectiveness in DNA barcoding in freshwater fish (Hubert *et al.* 2008), and marine fish (Ward *et al.*, 2005 and Lakra *et al.*, 2011). Meanwhile, research on DNA barcoding in Indonesia has also begun to develop. However, it is still limited to several areas such as freshwater fish in Java and Bali (Dahrudin *et al.*, 2017), freshwater fish Lake Laut Aceh (Ariyanti, 2012 and Muchlisin *et al.*, 2013), the Pogar River Sulawesi Island (Arai *et al.*, 1999), Lake Matano Sulawesi (Roy *et al.*, 2004), and Malang (Andriyono *et al.*, 2019b). Whereas DNA barcoding has done in Indonesia is still limited to certain species such as Shark

(Prehadi *et al.*, 2014 and Sembiring *et al.*, 2015) and Orange-Spotted grouper (Antoro *et al.*, 2006). Other researchers studied DNA barcoding of a grouper (Jefri *et al.*, 2015), seahorse (Lourie and Vincent, 2004), and goby fish species (Winterbottom *et al.*, 2014). Several scientists concerned on coral reef fish species such as three-spot dascullus (Bernardi Giacomo *et al.* 2001), anemone-fishes (Madduppa *et al.*, 2014), and Banggai cardinalfish (Bernardi and Vagelli, 2004). Due to the limited genetic information of marine fishes, this research is significant to report of Pangpang Bay fish resources through molecular approach.

MATERIALS AND METHODS

Sampling Site

Sampling sites for sample collection was performed in Pangpang Bay, Banyuwangi district of East Java Province (Figure, 1). No specific permit was required for this study. All samples had been collected from the traditional fishermen in Wringinputih Village, Muncar, Banyuwangi. That specimens were dead upon purchasing, and none of the collected specimens were in the endangered category based on the IUCN Red List database. The digital camera has taken for each individual sample

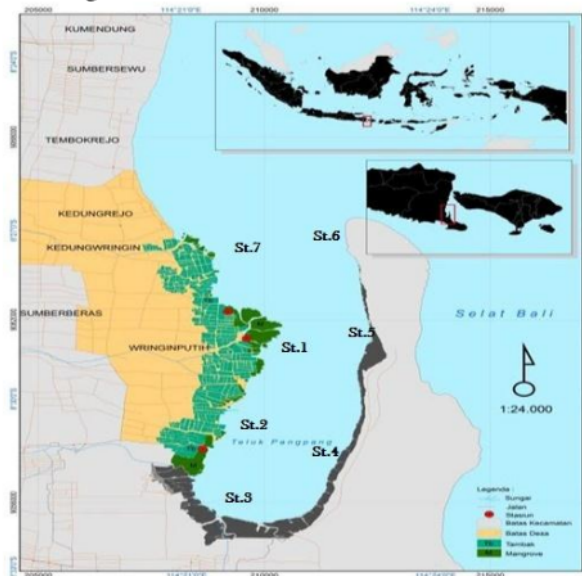


Fig 1. Map of sampling site distribution around Pangpang Bay, Banyuwangi

DNA extraction

Each sample has been compiled based on the morphological characters. After collection, it directly preserved in 90% ethanol. Genomic DNA was extracted using an Accuprep® Genomic DNA Extraction Kit (Bioneer) according to the manufacturer's guidelines. The anal fin (1 cm) was dissected and mix with 6X lysis buffer, which was further homogenized by the TissueLyser II (Qiagen). Quantification of purified genomic DNA was performed by nanoDrop (Thermofisher Scientific D1000), aliquoted and stored at the -70°C for further analysis.

PCR condition and Data Analysis

The universal fish primer, BCL-BCH (Baldwin et al. 2009, Handy et al. 2011), used to obtain the partial sequences of cytochrome c oxidase I (COI) region. The PCR mixture (20 μ L) contained 11.2 μ L ultra-pure water, 1 μ L primer forward and reversed (0.5 μ M), 0.2 μ L Ex Taq DNA polymerase (TaKaRa, Japan), 2 μ L 10X ExTag Buffer, 2 μ L dNTPs (1 μ M, TaKaRa, Japan). This PCR reaction, we used 2 μ L genomic DNA as a template. The PCR condition was carried out under the following setting: 95°C for 5 min in initial denaturation. After that, denaturation performed at 95°C for 30 s in 40 cycles, followed by 50°C for 30 s in annealing and 72°C for 45 s in extension step. The final step of PCR are final extension at 72°C for 5 min. The PCR products of COI was purified with the AccuPrep®Gel purification kit (Bioneer, Korea).

Data Analysis

The pairwise evolutionary distance among the family was determined by the Kimura 2-Parameter method. The Neighbor-joining (NJ) tree was constructed, and 1000 bootstrap analysis was carried by Mega 7 (Kumar et al., 2016).

RESULTS

Species Identification

In this study, 40 fish samples were identified in 37 marine fish species distributed in 25 families, and four orders (Table 1). The types of fish are the catch of traditional fishermen who use fishing gear in the form and a small portion using fishing rods and fishing nets. In addition to identification based on morphology, molecular identification is also carried out.

Phylogenetic Reconstruction

The results of the phylogenetic tree reconstruction (Figure, 2) showed that all Perciformes clustered in large clades, whereas in the Order Pleuronectiformes separated with *Psammoperca waigiensis*. This phylogenetic also shows that economically important Lutjanidae species form a clade. In this study, four species of *Lutjanus* (*L. indicus*, *L. carponotatus*, *L. fulviflamma*, dan *L. argentimaculatus*), were found, two species of *Siganus* (*S. sutor* dan *S. vermiculatus*), and one species of *Sardinella melanura*. *Lutjanus* genetic information has received the attention of many researchers, even information about the complete mitochondrial genome is known as *Lutjanus vitta* (Andriyono et al., 2018), *Lutjanus carponotatus* (Kim et al., 2019), and *Lutjanus fulviflamma* (Andriyono et al., 2019d).

In this study, the *Sardinella melanura* species (Andriyono et al., 2019c) identified from Pangpang Bay waters, also supplement the information that not only *Sardinella lemuru* is commonly found in the Strait of Bali (Pradini et al., 2017 and Wujdi et al., 2016). Whereas in the species Siganidae, *Siganus sutor* and *Siganus vermiculatus* are estuary fish groups that can be found throughout the year. This species is also reported to be found in Sulawesi waters, and even the *S. sutor* species is the first record found in Sulawesi waters (Burhanuddin et al., 2014). Information in the study also complements previous research that *S. sutor* was also found in Pangpang Bay waters.

Table 1. List of online BLASTN results through NCBI database from marine fish specimens of Pangpang Bay, Banyuwangi

No.	Sampel ID	Order	Family	Species Name	Query Cover (%)	Identity (%)
1	bw32	Clupeiformes	Clupeidae	<i>Sardinella melanura</i>	100%	99%
2	bw38		Engraulidae	<i>Thryssa baelama</i>	96%	99%
3	bw42	Perciformes		<i>Thryssa baelama</i>	97%	99%
4	bw45		Ambassidae	<i>Ambassis sp.</i>	97%	99%
5	bw33		Apogonidae	<i>Jaydia novaeguineae</i>	98%	99%
6	bw44			<i>Archamia bleekeri</i>	99%	99%
7	bw18		Carangidae	<i>Scomberoides tala</i>	96%	100%
8	bw31			<i>Carangoides chrysophrys</i>	99%	100%
9	bw23		Eleotridae	<i>Butis amboinensis</i>	97%	99%
10	bw28		Gerreidae	<i>Gerres filamentosus</i>	100%	99%
11	bw29			<i>Gerres filamentosus</i>	100%	99%
12	bw43		Gobiidae	<i>Acentro gobiuscaninus</i>	95%	100%
13	bw21		<i>Oxyurichthys ophthalmonema</i>	98%	92%	
14	bw9	Haemulidae	<i>Diagramma pictum</i>	97%	99%	
15	bw12		<i>Plectorhinchus lineatus</i>	97%	100%	
16	bw27		<i>Pomadasys kaakan</i>	98%	99%	
17	bw10	Labridae	<i>Choerodonan chorago</i>	99%	99%	
18	bw11		<i>Cheilinus fasciatus</i>	98%	99%	
19	bw1	Latidae	<i>Psammoperca waigiensis</i>	95%	99%	
20	bw26	Leiognathidae	<i>Leiognathus equulus</i>	100%	99%	
21	bw15	Lethrinidae	<i>Lethrinus lentjan</i>	100%	99%	
22	bw6	Lutjanidae	<i>Lutjanus fulviflamma</i>	100%	99%	
23	bw7		<i>Lutjanus carponotatus</i>	97%	99%	
24	bw16		<i>Lutjanus argentimaculatus</i>	100%	100%	
25	bw25		<i>Lutjanus indicus</i>	99%	100%	
26	bw17	Perciformes	Mugilidae	<i>Planiliza macrolepis</i>	98%	100%
27	bw5		Mullidae	<i>Parupeneus heptacanthus</i>	98%	100%
28	bw20			<i>Upeneus sulphureus</i>	94%	99%
29	bw8		Nemipteridae	<i>Pentapodus bifasciatus</i>	98%	100%
30	bw14		Scaridae	<i>Scarus vetula</i>	97%	99%
31	bw22		Scatophagidae	<i>Scatophagus argus</i>	100%	99%
32	bw4		Serranidae	<i>Cephalopholis miniata</i>	100%	100%
33	bw34			<i>Epinephelus coioides</i>	100%	100%
34	bw13		Siganidae	<i>Siganus sutor</i>	94%	99%
35	bw39			<i>Siganus vermiculatus</i>	98%	99%
36	bw36		Terapontidae	<i>Terapon jarbua</i>	100%	100%
37	bw37			<i>Terapon jarbua</i>	100%	100%
38	bw40		Trichiuridae	<i>Trichiurus lepturus</i>	99%	99%
39	bw41	Pleuronectiformes	Cynoglossidae	<i>Cynoglossus cf. cynoglossus</i>	96%	99%
40	bw19	Scorpaeniformes	Platycephalidae	<i>Platycephalus indicus</i>	92%	99%

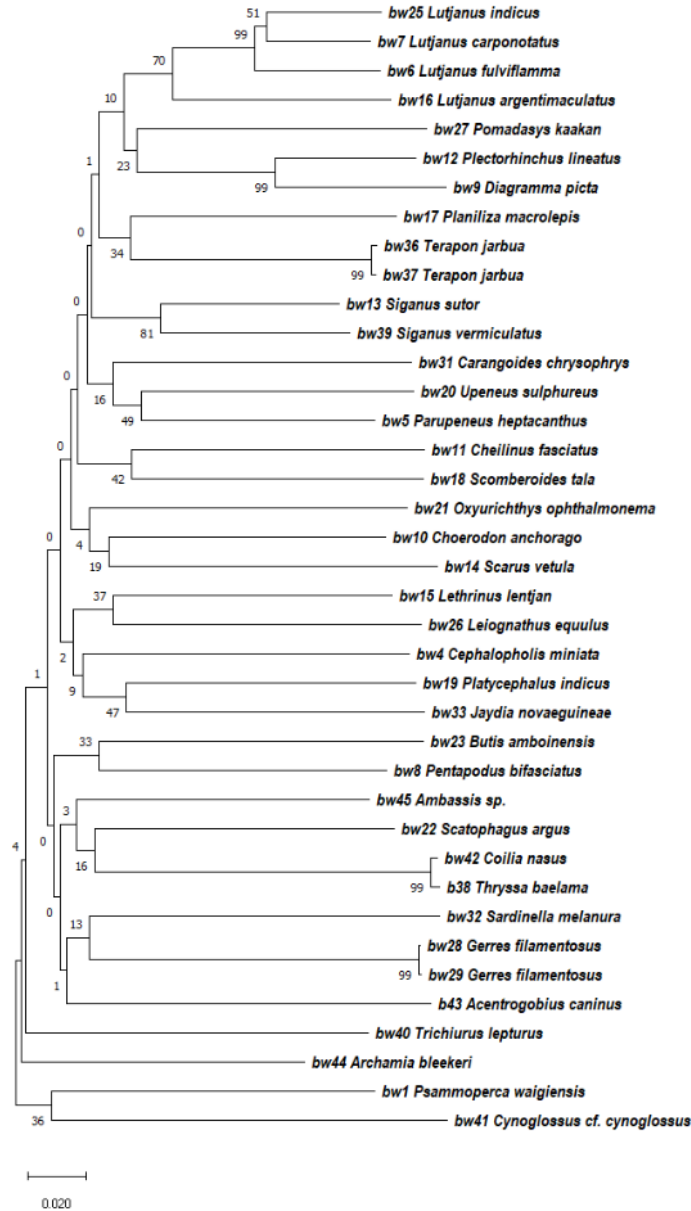


Fig 2. Phylogenetic reconstruction of COI gene sequences of marine fish from Pangpang Bay using Neighbor-Joining algorithm using Mega7

Water quality parameters

The physical condition of the waters and the water's quality are vital components forming the habitat of a living thing. The results of measurements of some physical and

chemical parameters of the seawaters carried out in situ included six chemical parameters and three physical parameters (Table 2).

Table 2. The measurements of physico-chemical parameters in Pangpang Bay waters.

No.	Parameter	unit	Station						
			1	2	3	4	5	6	7
Chemical									
1	DO	mg/L	6,2	12,2	8,4	10,7	6,2	8	6,7
2	Salinity	PSU	30	31	30	30	34	30	19
3	pH		6,5	7,5	7	7,5	7,5	7,5	7
4	Nitrate	mg/L	0,05	0,07	0,03	0,03	0,02	0,03	0,03
5	Nitrite	mg/L	0,12	0,2	0,2	0,11	0,11	0,09	0,02
6	Phosphate	mg/L	0,11	0,79	0,3	0,04	0,12	0,39	1,56
Physical									
7	Brightness	m	30	45	60	80	100	100	60
8	Depth	m	1	1,5	2	3	6	10	6
9	Temperature	°C	32	31,9	32,6	31,8	31,6	31	31

DISCUSSION

Indonesia has committed to protecting biodiversity by signing international treaties since 1992. The government also realized the commitment by enacting Law No. 5 of 1994 concerning the ratification of the Convention on Biological Diversity two years after ratifying the international treaty, as a continuation of the responsibilities undertaken in Brazil in 1992. The Indonesian government uses two approaches in protecting biodiversity, namely conservation of the area and preservation of species, including their genetic resources (Gunawan and Sugiarti 2015).

Slightly different from the conservation area, the Pangpang Bay, Banyuwangi Regency, has been designated by the Ministry of Forestry as an essential ecosystem. This determination was motivated by the Republic of Indonesia Presidential Instruction Number: 03 of 2010 concerning Equitable Development, namely the Millennium Development Goals (MDGs) program, the focus of its activities is the guarantee of Environmental Sustainability (Lundine *et al.*, 2013). The uniqueness of Pangpang Bay, which is determined as an essential area, is a determination based on many things, one of which is excellent mangrove potential (Raharja *et al.*, 2014; Buwono, 2017 and Kawamuna *et al.*, 2017;). Based on field visit results, fact-finding and group and plenary discussions from participants in the preparation of the Pangpang Bay Banyuwangi Bay Wetland/Mangrove Action Plan, there are 6 (six) main issues in the management of Pangpang Bay mangroves. These issues are environmental aspects, improving community welfare, regulation, and law enforcement, increasing capacity and human resources, improving infrastructure, and developing institutional management of the area. One of the environmental aspects that can be conveyed is the availability of accurate information about fisheries resources owned by Pangpang Bay, Banyuwangi, presented in this study.

Marine fish identification

8
Based on the type of fish caught on the static fishing gear (banjang) fishing gear, the size and species identified are quite diverse. The dominant fish caught were the Perciformes (89.2%), followed by the Clupeiformes (5.4%), Pleuronectiformes (2.7%), and Scorpaeniformes (2.7%). Although the Perciformes dominates from the results of identification, species from other orders also become a common catch of traditional fishermen. In the Perciformes, relevant economic groups include the Carangidae, Lutjanidae, and Serranidae families, have been identified in this report. Carangid fish species caught are species of *Scomberoides tala* and *Carangoides chrysophrys* (Table 1). Many research reports found this type in Pangpang Bay waters throughout the year with varying sizes. Apart from being the primary source of income for the traditional fishing community of Pangpang Bay, it is estimated that this area will become a hidden area that stores a high diversity of aquatic biota. Pangpang bay area is located near the Alas Purwo National Park area. The national park at the eastern end of the island of Java is a biodiversity reserve in the region. Previous studies mention that mangrove areas that live in the National Park are recorded to have a diversity of potential nekton (fish), including *Lutjanus fulviflamma* and *Ephinephelus gibbonus*, even though the Gobiidae (*Acentrogobius caninus*) dominates in that region (Ainullah *et al.*, 2015).

Pangpang Bay area is believed to be a nursery ground and also feeding zone, both at the juvenile stage and in the fingerling of several economic marine fish species. The catch shows that the fish are mostly young fish, which are likely feeding and growing in this area. With the condition of waters protected from waves (because they are bays), non-pelagic and small pelagic fish are commonly found (Table 1). In addition to these fish groups, due to the substrate waters that tend to be mud, demersal fish that were foraging in the bottom are also found, such as goby fish, *Acentrogobius caninus*, and *Trypauchen vagina* (Andriyono *et al.*, 2019a).

In the type of Clupeiformes, *Sardinella melanura* was identified in this study although many reports mention that *Sardinella lemuru* is a species of Clupeidae that has habitat in this region (Sartimbul *et al.*, 2010 and Pradini *et al.*, 2017). The identified *Sardinella melanura* is the first recorded of the complete mitochondrial genome isolated from fish in the Indonesian region (Andriyono *et al.*, 2019c). In Indonesia, several *Sardinella* species have been reported to have habitats, such as *Sardinella fimbriata* (Rahardjo and Simanjuntak 2017), *Sardinella jussieu* (Sektiana *et al.*, 2017), *Sardinella fijiensis* (Wang *et al.*, 2019). Among some species of *Sardinella*, *S. albella*, *S. fimbriata* and *S. gibbosa* have received less attention in taxonomy (Stern *et al.*, 2016). The economic value of sardine fish is sufficiently taken into account in the global fisheries market (Genisa 1999) in particular as a processed product and to obtain fish oil that contains essential fatty acids such as DHA (17.07%) and EPA (13.82%) (Andriyani *et al.*, 2017). Fisheries processing companies in Indonesia that make processed sardine (fish cane) as a significant commodity are also entirely developed and become a mainstay in increasing export revenues.

Although Pangpang bay waters have high fishery potential, fishery activities around the area are also one of the biggest threats to the destruction of fisheries resources in the region. The use of fishing gear that is not environmentally friendly has the potential to damage fish populations, such as the condition of over-fishing in Pangpang Bay (Ekawaty, 2015). This situation can be seen with the use of trap net (traditional name) and chart trap (floating trap net), which are passive and not selective fishing gear by

using tidal conditions (Cochrane, 2002), which are widely installed on the coast and mangroves. An intake of fishes is carried out following the tidal system in this area, which can be done in the morning or evening. This region experiences tidal current around date 12-19 and 27-6 every month. Meanwhile, the fishermen do not take their catch when the water from stagnant happens around 20-27 and 5-10 each month. In these stagnant conditions, aquatic faunas are caught less, so they prefer to repair or clean the nets and wait when the seawater starts to tide. From the catches obtained, the length of fish caught varies in size from about 2 cm to around 30 cm in total length, and also, the number (capacity) of fish found has been decreased from year to year (Ekawaty, 2015). With this method of fishing, it is expected to further reduce fish resources due to the pressure of exploitation that is increasingly high by the community (Andriyono *et al.*, 2019a).

Physical-Chemical Parameters

The sedimentation process in the Pangang bay area is quite high, with some rivers entering the bay, including the Setail River and several other rivers from the west. With this high sedimentation, this area has become an ideal habitat for mangrove plants which were found to be quite dominant in the eastern edge of the Pangang Bay area of 490 ha (Radiarta *et al.*, 2017).

The characteristics of the bay waters can be observed from the tidal system, which is included in the mixed type with two ebb and two tides. Tidal conditions are aquatic dynamics that significantly affect the oceanographic process in waters. The characteristics of sea level elevation data are obtained from the Meneng station. The Meneng Station is a station owned by Deshidros of Indonesia Navy Station, at latitude 08011'00'S; longitude 1140 54 '00' 'T. The data used is the average water level elevation per hour for one year in 2013. The tidal type at the Meneng station is a mixture leaning to a Mixed Daily semi-diurnal tidal pattern (Buwono *et al.*, 2015). Besides, the dynamics of water parameters in the Pangang bay area are observed to be quite diverse (Table 2) and overall are still in moderate criteria for marine aquaculture activities if developed in this area (Radiarta *et al.*, 2017). Nonetheless, waste discharges from several fishing industries in Muncar (Setiyono and Yudo 2018) allow the accumulation of organic material and other wastes that increase the burden of waters, especially for the living needs of aquatic biota. From previous studies, the contaminants of Fe, Pb, Cr, and Zn have been measured in the Pangang Bay region with an average concentration of 0.02 mg/L, 0.09 mg/L, 0.03 mg/L, and 0.8 mg/L, respectively (Radiarta *et al.*, 2017).

CONCLUSION

The potential of marine fish diversity in the Pangpag Bay area needs to be considered, as well as getting a severe threat with the rise of fishing activities that are less environmentally friendly. The use of "*banjang*" which produces non-selected catches of various sizes, is the leading cause of the decline in the biodiversity value of this region. Based on molecular identification information in the COI region, 37 marine fish species were distributed in 25 families, and four orders. Based on this identification, we believe that there are still many other species of marine fish that have not been identified in this study due to the limitations of fishing gear and the scope of the research conducted.

Environmental DNA metabarcoding can be applied by performing a combination of traditional surveys with various fishing tools (passive and active) to obtain complete and useful information in the formulation of conservation policies in this region.

ACKNOWLEDGMENTS

We are grateful to the Ministry of Education and Culture, the Republic of Indonesia. Besides, we also want to thank Prof Kim Hyun-Woo, the Molecular Physiology Laboratory, Pukyong National University, Busan, Korea for his suggestions during these experiments.

REFERENCES

- Ainullah MV, Sudarmadji S, Utami ET.** 2015. Keanekaragaman Jenis Ikan Di Blok Bedul Segoro Anak Taman Nasional Alas Purwo. . Berkala Sainstek 3: 16-19.
- Andriyani P, Nurhayati T, Suseno SH.** 2017. Pengaruh oksidatif minyak ikan sardin untuk pangan. Jurnal Pengolahan Hasil Perikanan Indonesia 20: 275-285.
- Andriyono S, Masithah ED, Pramono H.** 2019a. First Record of The Burrowing Goby *Trypuchen vagina* from Pangpang Bay, Indonesia. Indonesian Journal of Marine Sciences/Illmu Kelautan 24.
- Andriyono S, Alam MJ, Kim H-W.** 2019b. Environmental DNA (eDNA) metabarcoding: Diversity study around the Pondok Dadap fish landing station, Malang, Indonesia. Biodiversitas Journal of Biological Diversity 20.
- Andriyono S, Alam J, Kwak DH, Kim H-W.** 2018. Complete mitochondrial genome of brownstripe red snapper, *Lutjanus vitta* (Perciformes: Lutjanidae). Mitochondrial DNA Part B 3: 1129-1130.
- Andriyono S, Alam MJ, Sektiana SP, Kim H-W.** 2019c. The complete mitochondrial genome of blacktip sardinella, *Sardinella melanura* (Clupeiformes: Clupeidae). Mitochondrial DNA Part B 4: 1125-1126.
- Andriyono S, Sektiana SP, Alam J, Kim H-W.** 2019d. The complete mitochondrial genome of black-spot snapper, *Lutjanus fulviflamma* (Perciformes: Lutjanidae). Mitochondrial DNA Part B 4: 366-367.
- Antoro S, Na-Nakorn U, Koedprang W.** 2006. Study of genetic diversity of orange-spotted grouper, *Epinephelus coioides*, from Thailand and Indonesia using microsatellite markers. Marine Biotechnology 8: 17-26.
- Anugrah SP.** 2013. Sinergitas Lembaga Pengelola Lingkungan Hidup pada Pemerintah Kabupaten Banyuwangi dalam Mengendalikan Pencemaran Lingkungan Akibat Limbah Pengolahan Ikan di Muncar Universitas Brawijaya.
- Arai T, Aoyama J, Limbong D, Tsukamoto K.** 1999. Species composition and inshore migration of the tropical eels *Anguilla* spp. recruiting to the estuary of the Poigar River, Sulawesi Island. Marine Ecology Progress Series: 299-303.
- Ariyanti Y.** 2012. Aplikasi DNA Barcode pada Penentuan Spesies Ikan Danau Laut Tawar, Nangroe Aceh Darussalam.
- Baldwin CC, Mounts JH, Smith DG, Weigt LA.** 2009. Genetic identification and color descriptions of early life-history stages of Belizean *Phaeoptyx* and *Astrapogon*

- (Teleostei: Apogonidae) with comments on identification of adult *Phaeoptyx*. *Zootaxa* 2008: 1-22.
- Bernardi G, Vagelli A.** 2004. Population structure in Banggai cardinalfish, *Pterapogon kauderni*, a coral reef species lacking a pelagic larval phase. *Marine Biology* 145: 803-810.
- Bernardi G, Holbrook SJ, Schmitt RJ.** 2001. Gene flow at three spatial scales in a coral reef fish, the three-spot dascyllus, *Dascyllus trimaculatus*. *Marine Biology* 138: 457-465.
- Burhanuddin AI, Budimawan B, Sahabuddin S.** 2014. The Rabbit-fishes (Family Siganidae) from The Coast of Sulawesi, Indonesia. *International Journal of Plant, Animal and Environmental Sciences* 4: 95-102.
- Buwono YR.** 2017. Identification And Density Mangrove Ecosystemin The Areas Pangpang Bay Banyuwangi. *Samakia: Jurnal Ilmu Perikanan* 8: 32-37.
- Buwono YR, Ardhana I, Sudarma M.** 2015. Potensi fauna akuatik ekosistem hutan mangrove di kawasan Teluk Pangpang Kabupaten Banyuwangi. *ECOTROPIC: Jurnal Ilmu Lingkungan (Journal of Environmental Science)* 9: 28-33.
- Cochrane KL.** 2002. A fishery manager's guidebook: management measures and their application: Food & Agriculture Org.
- Dahrudin H, Hutama A, Busson F, Sauri S, Hanner R, Keith P, Hadiaty R, Hubert N.** 2017. Revisiting the ichthyodiversity of Java and Bali through DNA barcodes: Taxonomic coverage, identification accuracy, cryptic diversity and identification of exotic species. *Molecular ecology resources* 17: 288-299.
- Ekawaty R.** 2015. Pengaruh Kepadatan Bagan Dan Kedalaman Perairan Terhadap Produktivitas Hasil Tangkap Bagan Tancap Di Teluk Pang Pang, Banyuwangi, Jawa Timur. *Journal of Marine and Aquatic Sciences* 1: 7-13.
- Genisa AS.** 1999. Pengenalan jenis-jenis ikan laut ekonomi penting di Indonesia. *Jurnal Oseana* 24: 17-38.
- Giusti A, Armani A, Sotelo CG.** 2017. Advances in the analysis of complex food matrices: Species identification in surimi-based products using Next Generation Sequencing technologies. *PloS one* 12: 1-18.
- Gunawan H, Sugarti S.** 2015. Ex situ biodiversity conservation through Development of Biodiversity Park by private sector: Lesson learnt from Aqua Danone Group, Indonesia. Pages 565-573. *Prosiding Seminar Nasional Masyarakat Biodiversitas Indonesia*.
- Handy SM, Deeds JR, Ivanova NV, Hebert PD, Hanner RH, Ormos A, Weigt LA, Moore MM, Yancy HF.** 2011. A single-laboratory validated method for the generation of DNA barcodes for the identification of fish for regulatory compliance. *Journal of AOAC International* 94: 201-210.
- Hubert N, Hanner R, Holm E, Mandrak NE, Taylor E, Burrige M, Watkinson D, Dumont P, Curry A, Bentzen P.** 2008. Identifying Canadian freshwater fishes through DNA barcodes. *PLoS one* 3.
- Jefri E, Zamani NP, Subhan B, Madduppa HH.** 2015. Molecular phylogeny inferred from mitochondrial DNA of the grouper *Epinephelus* spp. in Indonesia collected from local fish market. *Biodiversitas Journal of Biological Diversity* 16.

- Kawamuna A, Suprayogi A, Wijaya AP.** 2017. Analisis Kesehatan Hutan Mangrove Berdasarkan Metode Klasifikasi Ndvi Pada Citra Sentinel-2 (Studi Kasus: Teluk Pangpang Kabupaten Banyuwangi). *Jurnal Geodesi Undip* 6: 277-284.
- Kim G, Lee J-H, Alam MJ, Lee SR, Andriyono S.** 2019. Complete mitochondrial genome of Spanish flag snapper, *Lutjanus carponotatus* (Perciformes: Lutjanidae). *Mitochondrial DNA Part B* 4: 568-569.
- Kumar S, Stecher G, Tamura K.** 2016. MEGA7: molecular evolutionary genetics analysis version 7.0 for bigger datasets. *Molecular biology and evolution* 33: 1870-1874.
- Lakra W, Verma M, Goswami M, Lal KK, Mohindra V, Punia P, Gopalakrishnan A, Singh K, Ward RD, Hebert P.** 2011. DNA barcoding Indian marine fishes. *Molecular Ecology Resources* 11: 60-71.
- Lourie SA, Vincent AC.** 2004. A marine fish follows Wallace's Line: the phylogeography of the three-spot seahorse (*Hippocampus trimaculatus*, Syngnathidae, Teleostei) in Southeast Asia. *Journal of Biogeography* 31: 1975-1985.
- Lundine J, Hadikusumah RY, Sudrajat T.** 2013. Indonesia's progress on the 2015 Millennium Development Goals. *Strategic Review* 3: 54-66.
- Madduppa HH, Timm J, Kochzius M.** 2014. Interspecific, spatial and temporal variability of self-recruitment in anemonefishes. *PLoS One* 9: e90648.
- Meyer CP, Paulay G.** 2005. DNA barcoding: error rates based on comprehensive sampling. *PLoS biology* 3: e422.
- Muchlisin ZA, Thomy Z, Fadli N, Sarong MA, Siti-Azizah MN.** 2013. DNA barcoding of freshwater fishes from Lake Laut Tawar, Aceh Province, Indonesia. *Acta ichthyologica et piscatoria* 43.
- Pepe T, Trotta M, Di Marco I, Anastasio A, Bautista JM, Cortesi ML.** 2007. Fish species identification in surimi-based products. *Journal of agricultural and food chemistry* 55: 3681-3685.
- Perkasa T, Wijayanto D, Fitri ADP.** 2016. Analisis Produktivitas Purse Seine Gardan Dan Purse Seine Slerek Dengan Fishing Base Di Pelabuhan Perikanan Pantai (PPP) Muncar Kabupaten Banyuwangi Jawa Timur. *Journal of Fisheries Resources Utilization Management and Technology* 5: 102-110.
- Pradini S, Rahardjo M, Kaswadji R.** 2017. Kebiasaan Makanan Ikan Lemuru (*Sardinella Lemuru*) Di Perairan Muncar, Banyuwangi [Food Habits of Threadfin Bream, *Sardinella Lemuru* in Muncar, Banyuwangi]. *Jurnal Iktiologi Indonesia* 1: 41-45.
- Prehadi P, Sembiring A, Kurniasih EM, Rahmad R, Arafat D, Subhan B, Madduppa HH.** 2014. DNA barcoding and phylogenetic reconstruction of shark species landed in Muncar fisheries landing site in comparison with Southern Java fishing port. *Biodiversitas Journal of Biological Diversity* 16.
- Radiarta IN, Saputra A, Priono B.** 2017. Identifikasi Kelayakan Lahan Budi Daya Ikan Dalam Keramba Jaring Apung Dengan Aplikasi Sistem Informasi Geografis di Teluk Pangpang, Jawa Timur. *Jurnal Penelitian Perikanan Indonesia* 11: 31-41.
- Rahardjo M, Simanjuntak CP.** 2017. Studi Makanan ikan Tembang, *Sardinella fimbriata* (Pisces: Clupeidae) di Perairan Mangrove Pantai Mayangan, Jawa Barat

- [Study on Food habits of Fringescale *Sardinella*, *Sardinella fimbriata* in Mangrove Waters, Mayangan Coast, West Java]. *Jurnal Iktiologi Indonesia* 2: 29-33.
- Raharja AB, Widigdo B, Sutrisno D.** 2014. Kajian potensi kawasan mangrove di kawasan pesisir Teluk Pangpang, Banyuwangi. *DEPIK Jurnal Ilmu-Ilmu Perairan, Pesisir dan Perikanan* 3.
- Roy D, Docker M, Hehanussa P, Heath D, Haffner G.** 2004. Genetic and morphological data supporting the hypothesis of adaptive radiation in the endemic fish of Lake Matano. *Journal of Evolutionary Biology* 17: 1268-1276.
- Sartimbul A, Nakata H, Rohadi E, Yusuf B, Kadarisman HP.** 2010. Variations in chlorophyll-a concentration and the impact on *Sardinella lemuru* catches in Bali Strait, Indonesia. *Progress in Oceanography* 87: 168-174.
- Sektiana SP, Andriyono S, Kim H-W.** 2017. Characterization of the complete mitochondrial genome of Mauritian sardinella, *Sardinella jussieu* (Lacepède, 1803), collected in the Banten Bay, Indonesia. *Fisheries and aquatic sciences* 20: 26.
- Sembiring A, Pertiwi NPD, Mahardini A, Wulandari R, Kurniasih EM, Kuncoro AW, Cahyani ND, Anggoro AW, Ulfa M, Madduppa H.** 2015. DNA barcoding reveals targeted fisheries for endangered sharks in Indonesia. *Fisheries Research* 164: 130-134.
- Setiyono S, Yudo S.** 2018. Potensi Pencemaran dari Limbah Cair Industri Pengolahan Ikan di Kecamatan Muncar, Kabupaten Banyuwangi. *Jurnal Air Indonesia* 4.
- Setyaningrum EW.** 2017. Pelestarian Mangrove Berbasis Masyarakat Sebagai Dasar Ekologi dan Ketahanan Ekonomi di Teluk Pangpang Banyuwangi. Pages 313-321. Seminar Nasional Pengabdian kepada Masyarakat.
- Stern N, Rinkevich B, Goren M.** 2016. Integrative approach revises the frequently misidentified species of *Sardinella* (Clupeidae) of the Indo-West Pacific Ocean. *Journal of fish biology* 89: 2282-2305.
- Suryawati SH, Purnomo AH.** 2017. Analisis ex-ante keberlanjutan program minapolitan. *Jurnal Sosial Ekonomi Kelautan dan Perikanan* 6: 61-81.
- Wang Z, Liu Y, Feng W, Chen L, Miao Z, Chen J.** 2019. The complete mitochondrial genome of *Sardinella fijiensis* (Clupeiformes: clupeidae) and phylogenetic studies of clupeidae. *Mitochondrial DNA Part B* 4: 1413-1414.
- Ward RD, Zemplak TS, Innes BH, Last PR, Hebert PD.** 2005. DNA barcoding Australia's fish species. *Philosophical Transactions of the Royal Society of London B: Biological Sciences* 360: 1847-1857.
- Winterbottom R, Hanner RH, Burrige M, Zur M.** 2014. A cornucopia of cryptic species-a DNA barcode analysis of the gobiid fish genus *Trimma* (Percomorpha, Gobiiformes). *ZooKeys*: 79.
- Wiratama A.** 2012. Dampak Implementasi Program Minapolitan Terhadap Kesejahteraan Masyarakat Di Kecamatan Muncar Kabupaten banyuwangi. *Sumber* 19: 2013.
- Wujdi A, Suwarso S, Wudianto W.** 2016. Biologi Reproduksi dan Musim Pemijahan Ikan Lemuru (*Sardinella lemuru* Bleeker 1853) di Perairan Selat Bali. *BAWAL Widya Riset Perikanan Tangkap* 5: 49-57.

Phylogenetic tree banyuwangi 2020

ORIGINALITY REPORT

7%

SIMILARITY INDEX

0%

INTERNET SOURCES

7%

PUBLICATIONS

0%

STUDENT PAPERS

PRIMARY SOURCES

- 1** E. M. Abbas, M. Ismail, A. El-Ganainy, F. S. Ali. "First DNA Barcoding-based Inventory of Suez Gulf Fishes in Egypt and its Implication for Species Diversity", Journal of Ichthyology, 2021
Publication 1%
 - 2** S Andriyono, M J Alam, H Pramono, A A Abdillah, H W Kim. " Next-generation sequencing yields the complete mitochondrial genome of mud spiny lobster, (Crustacea: Decapoda) from Madura water ", IOP Conference Series: Earth and Environmental Science, 2019
Publication 1%
 - 3** Sinar Pagi Sektiana, M. Tahang, Sapto Andriyono, Jobaidul Alam, Hyun-Woo Kim. " Complete mitochondrial genome of (Crustacea, Decapoda, Penaeidae) from Aceh province, Indonesia ", Mitochondrial DNA Part B, 2018
Publication <1%
-

4

Md Jobaidul Alam, Nack-Keun Kim, Sapto Andriyono, Hee-kyu Choi, Ji-Hyun Lee, Hyun-Woo Kim. "Assessment of fish biodiversity in four Korean rivers using environmental DNA metabarcoding", PeerJ, 2020

Publication

<1 %

5

YAN SUN. "DNA barcoding of Caenogastropoda along coast of China based on the COI gene : DNA BARCODING OF CAENOGASTROPODA", Molecular Ecology Resources, 03/2012

Publication

<1 %

6

W. S. LAKRA. "DNA barcoding Indian marine fishes : DNA BARCODING", Molecular Ecology Resources, 07/16/2010

Publication

<1 %

7

Submitted to Universitas Airlangga

Student Paper

<1 %

8

Bahdad, Budi Hascaryo Iskandar, Mulyono S. Baskoro, M. Imron. "Selection of Sustainable Redi Fishing Technology Unit in Buton Regency Southeast Sulawesi", Asian Journal of Applied Sciences, 2019

Publication

<1 %

9

Hong Zhou, Yexin Yang, Yi Liu, Hongmei Song, Xuejie Wang, Sudong Xia, Xidong Mu. "Sequencing and analysis of the complete

<1 %

mitochondrial genome of (Datnioididae) ",
Mitochondrial DNA Part B, 2022

Publication

10

Maximilian Wagner, Marcelo Kovačić, Stephan Koblmüller. " Unravelling the taxonomy of an interstitial fish radiation: Three new species of (Teleostei: Gobiesocidae) from the Mediterranean Sea and redescriptions of and ", Journal of Fish Biology, 2020

<1 %

Publication

11

Kevin Labrador, Altair Agmata, Joseph Dominic Palermo, Rachel Ravago-Gotanco, Ma. Josefa Pante. "Mitochondrial DNA reveals genetically structured haplogroups of Bali sardinella (Sardinella lemuru) in Philippine waters", Regional Studies in Marine Science, 2021

<1 %

Publication

12

Manivasagam Vignesh, JayaLakshmi Vasu, Devanathan Nivedha, Mouttou Vivek Srinivas, Shalini Iyyanar, Hirak Kumar Mukhopadhyay. "Isolation and Antibioqram of Escherichia coli from Canine Pyometra in Puducherry Region", Indian Journal of Veterinary Sciences & Biotechnology, 2022

<1 %

Publication

13

W. Bryan Jennings, Piero A. Ruschi, Gustavo Ferraro, Carla Christie Quijada et al.

<1 %

"Barcoding the Neotropical freshwater fish fauna using a new pair of universal COI primers with a discussion of primer dimers and M13 primer tails", Genome, 2019

Publication

14

Fanny Iriany Ginzal, Diah Permata Wijayanti, Subagiyo, Agus Sabdono. " Growth and Mortality, Recruitment and Exploitation Rate of Fringescale Sardinella (Valenciennes 1847) in Rote Island in the Savu Sea ", Croatian Journal of Fisheries, 2022

Publication

<1 %

15

I. R Phillips, E. D Burton, D. W Hawker. "Effect of diffusion and resuspension on nutrient release from submerged sediments", Toxicological & Environmental Chemistry, 2005

Publication

<1 %

16

Pigment & Resin Technology, Volume 43, Issue 2 (2014-03-28)

Publication

<1 %

17

T Phardana, B Subhan, Y Naulita, L M I Sani, H Madduppa. "Low genetic diversity and a mixing population of the reef Manta ray (Mobula alfredi, Krefft 1868) between three populations across Indonesian seas revealed by Mitochondrial DNA", IOP Conference Series: Earth and Environmental Science, 2022

Publication

<1 %

18

Wazir S. Lakra. "Molecular identification and phylogenetic relationships of seven Indian Sciaenids (Pisces: Perciformes, Sciaenidae) based on 16S rRNA and cytochrome c oxidase subunit I mitochondrial genes", *Molecular Biology Reports*, 05/2009

Publication

<1 %

19

A. Armani, A. Giusti, L. Guardone, L. Castigliego, D. Gianfaldoni, A. Guidi. "Universal Primers Used for Species Identification of Foodstuff of Animal Origin: Effects of Oligonucleotide Tails on PCR Amplification and Sequencing Performance", *Food Analytical Methods*, 2015

Publication

<1 %

20

Lei Xu, Xuehui Wang, Kay Van Damme, Delian Huang, Yafang Li, Lianggen Wang, Jiajia Ning, Feiyan Du. "Assessment of fish diversity in the South China Sea using DNA taxonomy", *Fisheries Research*, 2021

Publication

<1 %

21

Moo-Sang Kim, Jinho Kim, Tae-Wook Kang, Uiseok Jeong, Kang-Rae Kim, In-Chul Bang. "The complete mitochondrial genome of (Clupeiformes: Clupeidae)", *Mitochondrial DNA Part B*, 2021

Publication

<1 %

22

Rozirwan, I Iskandar, M Hendri, R Apri, Supardi, N Azhar, W Mardiansyah.

"Distribution of phytoplankton diversity and abundance in Maspari island waters, South Sumatera, Indonesia", Journal of Physics: Conference Series, 2019

Publication

<1 %

23

Chelsey N. Young, John K. Carlson. "The biology and conservation status of the oceanic whitetip shark (*Carcharhinus longimanus*) and future directions for recovery", Reviews in Fish Biology and Fisheries, 2020

Publication

<1 %

24

Nicolas Hubert, Robert Hanner, Erling Holm, Nicholas E. Mandrak et al. "Identifying Canadian Freshwater Fishes through DNA Barcodes", PLoS ONE, 2008

Publication

<1 %

25

Vaddiparti Iswarya Deepti, Sujatha Kandula, G. D. Khedkar. "DNA barcoding of five species of groupers (Pisces: Serranidae) off Visakhapatnam, central eastern coast of India", Mitochondrial DNA Part A, 2017

Publication

<1 %

Exclude quotes On

Exclude matches Off

Exclude bibliography On

Phylogenetic tree banyuwangi 2020

GRADEMARK REPORT

FINAL GRADE

/100

GENERAL COMMENTS

Instructor

PAGE 1

PAGE 2

PAGE 3

PAGE 4

PAGE 5

PAGE 6

PAGE 7

PAGE 8

PAGE 9

PAGE 10

PAGE 11

PAGE 12

PAGE 13
