

# Genetic diversity Serranidae Sunda 2020

*by* Sapto Andriyono

---

**Submission date:** 09-Jan-2023 04:34PM (UTC+0800)

**Submission ID:** 1990116922

**File name:** EJABF\_Volume\_24\_Issue\_3\_Pages\_403-415.pdf (719.32K)

**Word count:** 5809

**Character count:** 32561



## Genetic diversity and phylogenetic reconstruction of grouper (Serranidae) from Sunda Land, Indonesia

Sapto Andriyono<sup>1\*</sup>, Adrian Damora<sup>2</sup>, Andi A. Hidayani<sup>3</sup>

<sup>1</sup>Department of Marine, Fisheries and Marine Faculty, Universitas Airlangga C Campus Jl. Mulyorejo Surabaya East Java, 60115, Indonesia

<sup>2</sup>Department of Aquaculture, Faculty of Marine and Fisheries, Universitas Syiah Kuala, Jl. Putroe Phang, Darussalam, Banda Aceh 23111, Aceh, Indonesia

<sup>3</sup>Fisheries Department, Faculty of Marine Science and Fisheries, Hasanuddin University. Jl. Perintis Kemerdekaan KM. 10, Makassar, South Sulawesi, Indonesia.

\*Corresponding Author: [sapto.andriyono@fpk.unair.ac.id](mailto:sapto.andriyono@fpk.unair.ac.id)

### ARTICLE INFO

#### Article History:

Received: May 7, 2020

Accepted: May 25, 2020

Online: May 29, 2020

#### Keywords:

Commercial groupers,  
Serranidae,  
Genetic study,  
Sunda land,  
Indonesia

### ABSTRACT

Groupers are coral reefs associated and favored in the aquaculture industry. Aquaculture system has been successfully carried out with a floating cage system as well as in an aquaculture system in a pond. Lately, breeding activities in groupers have produced hybrid species that are expected to increase production and fulfillment of the demand of groupers in the live fish market in Singapore, Taiwan, and China. The study of biology has supported the success of many of groupers, but information on genetic variation in commercial groupers is still very limited. This report is a preliminary study of genetic diversity in commercial groups from Java, Bali, and Aceh, which is the Sunda land region in western Indonesia. Eleven specimens have been identified with the barcode region (Cytochrome c Oxidase subunit I gene region). As a result, two species were identified as Indonesian haplotypes, namely *Epinephelus merra* and *Cephalopholis cyanostigma*. Phylogenetic tree analysis produces two large clades, namely Clade I (*Epinephelus*) and Clade II (*Cephalopholis* and *Variola*), which are clearly separated in the subfamily Epinephelinae. However, in-depth studies of genetic variation need to be more accurate by increasing the number of specimens from various regions in Indonesia to describe genetic diversity comprehensively.

### INTRODUCTION

A grouper is a group of fish that inhabit in the coral reef ecosystems and rocky shallow waters as their primary habitat. Several species found in shallow waters that have sandy mud substrate, which makes the grouper habitat variation quite diverse. The diversity of grouper habitat also makes groupers have a variety of species. As reported in previous studies, the waters of Bali have Serranidae diversity of 54 species or about 5.5 % of the composition of reef fish (Allen and Erdmann, 2013). Other studies reported

that the Epinephelinae subfamily has 159 species, including 15 genera of *Cephalopis* and 31 genera of *Epinephelus* (Allen and Adrim, 2003).

Groupers are an intimate group in the aquaculture industry because it can reach a significant size in weight of up to 400 kg and the total length of 2.5 meters (Heemstra, 1993), this fish became an essential commodity of aquaculture in Asia and some countries in the world (Chiu *et al.*, 2008), both with floating net systems and in ponds that show an increase of 8-16 % starting in the 1900s (Pomeroy, 2002). The high demand for grouper, both for consumption and for ornamental fisheries, makes grouper aquaculture more attractive with high market prices and export-oriented (Halim, 2001). The Indo-Malayan Archipelago region plays a vital role in the grouper supply chain worldwide. It has been estimated that about 80 % of the world's production of groupers was reported from Asia, mainly from Indonesia, the Philippines and Malaysia with a steadily increasing number of products every year (Craig *et al.*, 2011; Sadovy de Mitcheson *et al.*, 2013; Yulianto *et al.*, 2015; Alcantara and Yambot, 2016; and Kadir *et al.*, 2018). Increased export values have been felt since 1980, with export values to several Asian countries (Singapore, Hong Kong, and China) (Nuraini and Hartati, 2006), United States, and Europe (Halim, 2001). The high level of human exploitation of groupers causes at least one-third of the genus of the subfamily Epinephelinae, especially the *Epinephelus* and *Mycteroperca* genera listed as endangered species (Morris *et al.*, 2000) and requires very strict licensing and approval. For example, the giant groupers (*E. lanceolatus*) and the Napoleon wrasse (*C. undulatus*), have become vulnerable fish since they were established in 1996 by IUCN (Halim, 2001). In addition, out of 163 grouper species across the globe, 12 % (20 species) are at risk of extinction, and 13 % (22 species) are considered to be nearly threatened based on the IUCN Red List criteria (Craig *et al.*, 2011).

The limitations of the study of phylogenetic relationships between fish in subfamily Epinephelinae (*Epinephelus*, Serranidae) are still vital, given the complexity of the members of this family (Craig and Hastings, 2007). *Epinephelus* distribution is quite extensive, around the Indo-west Pacific and Indo-Pacific (Heemstra and Randall, 1993; Van Herwerden *et al.*, 2002; and Unsworth *et al.* 2007). In general, people only mention groupers, which are indicated by the spots on their body parts. The fish have a brownish to attractive red colour associated with their diverse habitats from shallow water areas and very colourful coral reef ecosystems (Unsworth *et al.*, 2007)

DNA barcoding believed to be one of the methods used globally to identify molecular approaches for animals and plants. This identification, the DNA in mitochondrial, becomes a remarkable sequence that is considered capable of being a marker and has been accepted as a global bio-identification system for animals (Hebert *et al.*, 2003 and Ward *et al.*, 2005). This identification is beneficial in specimens that are difficult to identify morphologically, such as larval stage, and organ fragments or morphologically incomplete specimens (Hebert *et al.*, 2003). Various advantages of DNA coding are straightforward and useful universal tools that include all the animals both in the form of fresh and processed product samples (Pepe *et al.*, 2007 and Giusti *et al.*, 2017). The accuracy of DNA-based identification is nearly 100 %, which indicates that this method can prove the identification of specimens under different environmental conditions (Meyer and Paulay, 2005). The barcoding system uses sequences that have a diversity in the single region of mitochondrial DNA, cytochrome c oxidase subunit I gene

(COI), and then deposited to the GenBank database. The GenBank has become central to deposit diverse taxa from all parts of the world. With the increase of molecular databases, scientists have demonstrated their effectiveness in conducting DNA barcoding from freshwater fish to deep-sea fish (Ward *et al.*, 2005 and Lakra *et al.*, 2011). Previous research has shown that mitochondrial DNA has a higher mutation rate compared to nuclear DNA by inheriting the maternal gene. Thus, researchers can obtain handy data for studying evolution between species, even within the same species (Waugh, 2007). In this research, we performed the molecular identification of several grouper from seven sampling sites (Java, Bali Island, and Aceh) with the COI gene region to understand the diversity and measure the genetic distance of each species, especially in the genus *Epinephelus*, *Cephalopholis*, and *Variola*.

## MATERIALS AND METHODS

### Sampling site

A total of 8 fish samples were collected from the five traditional fish markets around Jawa Island during July 2019. In the northern part of Java, samples were obtained from the Banten (6°0'50.00'S-106°10'21.00"E), and Gresik (6°52'56.65"S-112°12'15.87"), while Southern Java was represented samples from Malang (8°26'06.65"S-112°40'55.31"), the Banyuwangi (8°12'07.52"S-114°23'07.18"E), and Bali (8°45'23.00"S-115°10'05.68"E). Here, we also collected a specimen from the Kutaradja fish traditional market in Aceh, the westernmost province of Sumatera (5°35'07.00"N-95°19'07.00"E). Morphologically identification conducted according to the guideline from FAO (Heemstra, 1993), and species confirmation has been carried out with molecular identification carried out in this study using the COI gene region. No specific permit was required for this study due to collect from the local traditional fish market were dead upon purchasing. Before dissected, all specimen has been photographed by the digital camera.

### DNA extraction and PCR

Each specimen has been collected and directly preserved in 90 % ethanol for further experimental purposes. Around one cm tissues was taken from the anal fin of each specimen, dissected and mix with 6X lysis buffer, which was further homogenized by the TissueLyser II (Qiagen). Genomic DNA extracted using an Accuprep® Genomic DNA Extraction Kit (Bioneer) according to the manufacturer's guidelines. Quantification of purified genomic DNA performed by Nanodrop (Thermofisher Scientific D1000), aliquoted and stored at -70°C for further analysis.

### PCR condition and Data Analysis

One set of universal fish primer targeting cytochrome c oxidase I (COI) region, FISH-BCL (5'-TCA ACY AAT CAY AAA GAT ATY GGC AC-3') and FISH-BCH (5'-TAA ACT TCA GGG TGA CCA AAA AAT CA-3') (Baldwin *et al.*, 2009 and Handy *et al.*, 2011), used to obtain the partial sequences of COI gene. The PCR mixture (20µL) included 11.2 µL ultra-pure water, 1 µL primer forward and reverse (0.5 µM), 0.2 µL Ex Taq DNA polymerase (TaKaRa, Japan), 2 µL 10X ExTag Buffer, 2 µL dNTPs (1 µM, TaKaRa, Japan), and 2 µL genomic DNA as template. The PCR condition carried out

under the following setting: 95°C for 5 min in initial denaturation, followed by denaturation at 95°C for 30 s in 40 cycles, 50°C for 30 s in annealing, and 72°C for 45 s in extension step, and a final extension at 72°C for 5 min. The PCR products were purified with the AccuPrep®Gel purification kit (Bioneer, Korea).

### Phylogenetic analysis

All sequences were aligned, including reference sequences from the GenBank database (Table 1). The pairwise evolutionary distance among the family determined by the Kimura 2-Parameter method. The Neighbor-joining (NJ) tree constructed, and 1000 bootstrap analysis was carried by Mega7 program (Kumar *et al.*, 2016).

## RESULTS

A total of 11 successful identification samples consisted of three genera, *Epinephelus* (5), *Cephalopholis* (3), *Variola* (1). In this study, the genus *Epinephelus* was more dominated the general catches of fishers, including *E. coioides*, *E. ongus*, *E. poecilonotus*, *E. areolatus*, *E. merra*. Meanwhile, other types are only in small quantities.

**Table 1.** The genetic distance of Epinephelinae compare to the reference from GenBank database

Species name	Genetic distance within species	Genetic distance between species
<b>Clade I (<i>Epinephelus</i>)</b>		
<i>E. areolatus</i>	0.000	0.152-0.181
<i>E. merra</i>	0.004	0.157-0.185
<i>E. ongus</i>	0.000	0.107-0.184
<i>E. poecilonotus</i>	0.000	0.107-0.119
<i>E. oioides</i>	0.000	0.119-0.181
<b>Clade II (<i>Cephalopholis</i> and <i>Variola</i>)</b>		
<i>C. miniata</i>	0.000	0.089-0.216
<i>C. sonnerati</i>	0.000	0.089-0.174
<i>C. cyanostigma</i>	0.002	0.150-0.202
<i>V. albimarginata</i>	0.000	0.173-0.206

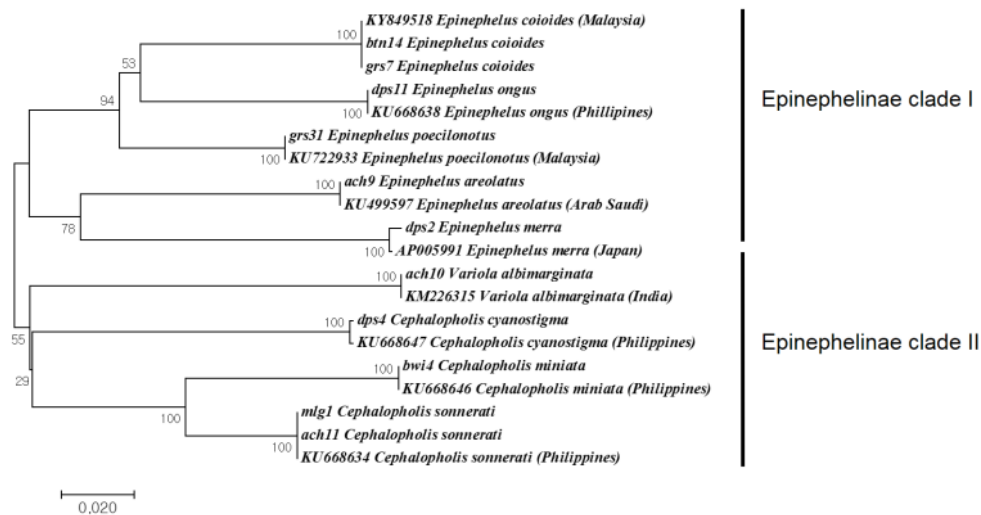
### Genetic distance

Genetic distance analysis was carried out using Mega 7, which aligned all obtained queries (Table 1). The results of this analysis provide a description of the distance between species (interspecific) and in the same species (intraspecific). *Epinephelus areolatus* obtained from Aceh is not different from the reference sequences originating from Saudi Arabia (KU499597) by the genetic distance is zero. The same thing also happens to another genus *Epinephelus*, which also has genetic distance 0 with reference in the GenBank database except in *E. merra*. In *E. merra* there is a slight difference, although identification still refers to the same species. Genetic distance with specimens originating from Japan (AP005991) is only 0.004, indicating that *E. merra* species is an Indonesian haplotype. Whereas in *Cephalopholis* species,

only *C. cyanostigma* was found in Indonesian haplotypes with a genetic distance of 0.002 with reference specimens from the Philippines (KU668647).

### Phylogenetic reconstruction

In the phylogenetic tree produced, two clades have been formed consisting of the genus *Epinephelus*, and the other clade consists of *Cephalopholis* and *Variola* (**Figure 1**). Morphologically, the *Epinephelus* group is dark grey to dark brown, while *Cephalopholis* and *Variola* are bright red body-colour (**Figure 2**). Although morphologically, the two clades show differences, sometimes it is challenging for researchers and the public to distinguish each species. Besides, the giving of various regional names also adds to the complexity of naming. So that the molecular identification carried out in this study is expected to help ensure the types of fish identified and traded in traditional markets in several areas. The certainty of the name in the specie here is also essential in various scientific writings because it deals with scientific information that will be read by the general public, especially in academic purposes.



**Figure 1.** Phylogenetic tree of Epinephelinae including references from the GenBank database

### Epinephelinae status in IUCN and CITES

Almost all grouper species in this study have the status of Least Concern (LC), while the grouper in international trade (CITES) is not evaluated (**Table 2**). However, *E. merra* has been reported as a causative agent of Ciguatera fish poisoning in several countries (**Lewis, 1986**). This fish poisoning occurs in some countries such as Thailand (**Toyoda et al., 1981**), the Philippines (**Montejo et al., 2020**), Hong Kong (**Sadovy, 1997**), Australia (**Gillespie et al., 1986**), and other countries (**Randall, 1958; Chan 2015; and Gaboriau et al., 2014**). However, there have been no reports of ciguatera in Indonesia (**Chan, 2015**).

**Tabel 2.** IUCN and CITES status of all grouper specimens

Species name	English name	Distribution	IUCN	CITES	Threat to humans
<i>E. areolatus</i>	Areolate grouper	Indo-Pacific	LC	NE	Harmless
<i>E. merra</i>	Honeycomb grouper	Indo-Pacific	LC	NE	Reports of ciguatera poisoning
<i>E. ongus</i>	White-streaked grouper	Indo-West Pacific	LC	NE	Harmless
<i>E. poecilnotus</i>	Dot-dash grouper	Indo-West Pacific	LC	NE	Harmless
<i>E. oioides</i>	Orange-spotted grouper	Indo-West Pacific	LC	NE	Harmless
<i>C. miniata</i>	Coral hind	Indo-Pacific	LC	NE	Harmless
<i>C. sonnerati</i>	Tomato hind	Indo-Pacific	LC	NE	Harmless
<i>C. cyanostigma</i>	Blue-spotted hind	Western Pacific	LC	NE	Harmless
<i>V. albimarginata</i>	White-edged lyre tail	Indo-Pacific	LC	NE	Harmless

LC: Least Concern

NE: Not Evaluated

## DISCUSSION

Grouper has become a leading commodity in aquaculture in several Asian countries and several other continents (Halim, 2001). The success of aquaculture is demonstrated by many studies on the reproductive biology that are sufficient detailed (Andrade *et al.*, 2003 and Andamari *et al.*, 2007, ), hatchery (Rimmer, 2000, and Sugama *et al.* 2012), larval rearing to a variety of grow-up system (Fukuhara, 1989 and Pomeroy, 2002). Several studies have shown good results in hatching several species of groupers such as *E. coioides*, *E. fuscoguttatus*, *Plectropomus leopardus*, and *Cromileptes altivelis* (Rimmer, 2000), *E. fuscoguttatus* (Sugama *et al.*, 2017). Research on the grow-up system also showed excellent results both in the floating net system (Baliao *et al.*, 2000) and in the aquaculture system in the pond (Baliao *et al.*, 1998).

Trade-in grouper in the live fish becomes a superior commodity because the price is quite high when compared to fresh dead fish. The demand for live fish forms continues to increase, so fishers prefer to sell live fish (Halim, 2001). However, many aquaculture activities are currently conducting such as breeding between species, which are expected to produce variants that have growth and other good traits such as disease resistance, good growth, resistance to extreme environments, and at the same time, making sterile fish (Hickling, 1968). For example, the crossing of tiger grouper and *E. fuscoguttatus* and *E. polyphkadion* grouper, which produce hybrid grouper with excellent growth performance (James *et al.*, 1999). However, please note that the pure parent lines that will be breeding must be well known so that the study of this breeding effect can be done well. Other breeding was also developed on *E. costae* with *E. marginatus* (Glamuzina *et al.*, 2001), *Plectropomus leopardus* with *Plectropomus maculatus* (Frisch and Hobbs, 2007), and *E. coioides* with *E. lanceolatus* (Kiryakit *et al.*, 2011 and Sutthinon *et al.*, 2015).



**Figure 2.** grs7 *E. coioides*(1); dps11 *E.ongus* (2); grs31 *E. poecilonotus* (3); ach9 *E. areolatus* (4); dps2 *E. merra* (5); ach10 *Variola albimarginata* (6); dps4 *Cephalopholis cyanostigma* (7); bwi4 *C. miniata* (8); mlg11 *C. sonnerati* (9) ; ach11 *C. sonnerati* (10)

Some breeding activities between *Epinephelus* species have been carried out in Indonesia. One of them is a hybrid between *E. microdon* (male) and *E. fuscoguttatus* (female) by producing seeds that have the title grouper cantik (Ismi, 2014). Another type of hybrid is the grouper cantang, which is a hybrid of *E. fuscoguttatus* and *E. lanceolatus* (Shapawi *et al.*, 2019). Another hybrid type is the kustang grouper, which is breeding of *Cromileptes altivelis* with *E. coioides* (Yu *et al.*, 2004). Breeding between *E. microdon* and *E. lanceolatus* has been carried out, which produces a new type of hybrid grouper (Sutarmat and Yudha, 2016). Also, back-cross hybrids have also been carried out between hybrids (*E. coioides* x *E. lanceolatus*) breeding with *E. lanceolatus* (Luan *et al.*, 2016). Back-cross breeding efforts are carried out to produce seeds that are more productive and have the advantage of better traits such as a high survival rate than the previous generation.

Due to the intensive exploitation of grouper species in the world, only a small number of studies on the genetic diversity of the species have been carried out. In Indonesia, although intensive aquaculture activities are carried out, only a few types of grouper have been reported about genetic studies such as *E. coioides* (Antoro *et al.*, 2006), *E. siullus* (Parenrengi and Tenriulo, 2008), *Cromileptes altivelis* (Susanto *et al.*, 2011 and Sugama *et al.*, 2017) and several other types of grouper *E. areolatus*, *E. merra*, *E. ongun*, *E. fasciatus*, *E. coioides*, *E. coeruleopunctatus*, and *E. longispinis* (Jefri *et al.*, 2015). Nevertheless, barcoding studies of several types of grouper have been carried out from some regions in Java and Bali (Andriyono *et al.*, 2020), Makassar (Parenrengi and Tenriulo, 2008), Lampung and Papua (Jefri *et al.*, 2015). This report is the first report involving specimens from Aceh and at the same time comparing with references from the GenBank database.



The use of genetic information from the GenBank database provides a picture of the similarities between species groups, even though the species has a large habitat distribution in the Indo-Pacific region (Randall and Heemstra, 1991 and Unsworth *et al.*, 2007). It is estimated, the grouper included in coral reef fish associated has experienced speciation that allows it to have variations in its genetic composition (Rocha and Bowen, 2008). Specialization of reef fishes has illustrated that open access sea also has its boundaries and niches so that many species will be different and adapt to each type of coral reef ecosystem. In this study, only two types (*E. merra* and *C. cyanostigma*) were found to be Indonesian haplotypes and differ from the same species from the alignment of the DNA reference sequence.

The distribution of *E. merra* is quite extensive with significant habitats found in the Indo-Pacific region including South Africa to French Polynesia and even in the central Pacific (Randall and Heemstra, 1991; Craig *et al.*, 2011; and Muths and Bourjea, 2011) which generally inhabit waters bring (<20 m depth). Its natural habitat is a coral reef area and becomes essential in artisanal fisheries as a source of protein and food for coastal communities (Heemstra, 1993). Studies on *E. merra* diversity also indicate genetic variation in Madagascar, the Maldives, and small islands in the West Indian Ocean (Muths *et al.*, 2015).

Meanwhile, *C. cyanostigma* was also identified in Maluku waters, which has a reasonably high diversity of the genus *Cephalopholis* with 11 species inhabiting the waters of this region (Limmon *et al.*, 2017) and North Sulawesi (Tokeshi *et al.*, 2013). Based on previous reports, the genus *Cephalopholis* consists of 22 species that have habitat distribution in the Pacific Ocean region (Heemstra, 1993), which tend to have a cryptic habit on coral reef ecosystems (Shpigel and Fishelson, 1989). Of the 22 known species of *Cephalopholis*, only nine species have been studied in terms of their biology. Many studies on several aspects of biology, including sexual maturity (Shapiro 1987), spawning (Donaldson, 1989), territoriality and their ecology (Shpigel and Fishelson, 1991), and sex change and population structure of *Cephalopholis* (Siau, 1994). Meanwhile, this report is the first report on genetic distance in *C. cyanostigma* in Indonesia based on the COI sequences that show the existence of different haplotypes with the same species in the Philippines. The haplotype was formed due to geographical different, the Philippine species is an Indo West-pacific species, while the sample in this study is a species of the Indian ocean. This result needs to get attention for further research on genetic variation of *Cephalopholis* in Indonesian regions with a more significant number of samples.

The haplotypes found in *E. merra* and *C. cyanostigma* can be known by phylogenetic tree analysis, which shows a slight distance with sequence reference (Figure 1). This study is quite helpful in giving an idea of the haplotype formed. Also, through this phylogenetic tree, it is known that the genus *Epinephelus* forms a separate clade separating from *Cephalopholis* and *Variola*. In this study, *Cephalopholis* and *Variola* are in the same clade but separated in several branches. Morphologically, these two genera can be easily distinguished by observing the caudal fin (Figure 2). In *Variola* species have caudal fin lunate (Baldwin, 2003), than *Cephalopholis* have rounded caudal fin (Allen, 2015). Thus, the phylogenetic tree places the two genera in separate branches (Figure 1). Although the number of samples is still small, this report

reinforces that the Epinephelinae group has several clades, which are genetic variations in the grouper.

### CONCLUSION

In this study, we found genetic variation in *E. merra* and *C. cyanostigma* that showed the existence of Indonesian haplotypes. This result was figure-out genetic distance of some species in this report. The genetic distance of *E. merra* and *C. cyanostigma* are 0.004 and 0.002, which is slightly different from sequences from Japan and the Philippines, respectively. It is necessary more in-depth studies of *C. cyanostigma*, due to the limited study of genetic variation, especially in Indonesia. The study of *C. cyanostigma* is very supportive in efforts to develop this species as an aquaculture commodity in the future, such as *Epinephelus*. An in-depth study of biological characteristics, including reproductive biology, ecology, and other specific characteristics, will be beneficial in both conservation and domestication.

### ACKNOWLEDGMENTS

The authors would like to express our sincere gratitude for the initiation of collaborative research between Airlangga University (Surabaya), Syiah Kuala University (Aceh), and Hasanuddin University (Makassar) which have given great importance to the development of studies in Indonesia. Fisheries studies in Java, Sumatra, Sulawesi, Kalimantan, and Papua require the support of many collaborators to produce quality and beneficial research for Indonesia.

### REFERENCES

- Alcantara, S.G. and Yambot, A.V.** (2016). DNA barcoding of commercially important grouper species (Perciformes, Serranidae) in the Philippines. *Mitochondrial DNA Part A* 27: 3837-3845.
- Allen, G.R.** (2015). Review of Indo-Pacific coral reef fish systematics: 1980 to 2014. *Ichthyological Research* 62: 2-8.
- Allen, G.R. and Adrim, M.** (2003). Coral reef fishes of Indonesia. *ZOOLOGICAL STUDIES-TAIPEI*- 42: 1-72.
- Allen, G.R. and Erdmann, M.V.** (2013). Reef Fishes of Bali, Indonesia. Bali Marine Rapid Assessment Program 2011, *BioOne*. 15-68.
- Andamari, R.; Sembiring, S.B.M. and Permana, G.N.** (2007). Aspects of leopard coral grouper (*Plectropomus leopardus*) reproduction in Indonesia. *Indonesian Aquaculture Journal* 2: 51-57.
- Andrade, Á.B.; Machado, L.F.; Hostim-Silva, M and Barreiros, J.P.** (2003). Reproductive biology of the dusky grouper *Epinephelus marginatus* (Lowe, 1834). *Brazilian Archives of Biology and Technology* 46: 373-382.
- Andriyono, S.; Alam, M.J. and Kim, H.W.** (2020). The Jawa and Bali Island Marine Fish Molecular Identification to Improve 12S rRNA-tRNA Valin-16S rRNA Partial Region Sequences on the GenBank Database. *Thalassas: An International Journal of Marine Sciences*: pp.1-14.

- Antoro, S.; Na-Nakorn, U. and Koedprang, W.** (2006). Study of genetic diversity of orange-spotted grouper, *Epinephelus coioides*, from Thailand and Indonesia using microsatellite markers. *Marine Biotechnology* 8: 17-26.
- Baldwin, C.C.** (2003). FAO Species Identification Guide for Fishery Purposes. The Living Marine Resources of the Western Central Pacific. *Copeia*: February 2003, Vol 2003, No.1, 212-214.
- Baldwin, C.C.; Mounts, J.H.; Smith, D.G. and Weigt, L.A.** (2009). Genetic identification and color descriptions of early life-history stages of Belizean *Phaeoptyx* and *Astrapogon* (Teleostei: Apogonidae) with comments on identification of adult *Phaeoptyx*. *Zootaxa* 2008: 1-22.
- Baliao, D.D.; Franco, N.M. and Jamon, N.R.S.** (2000). Grouper culture in floating net cages: Aquaculture Department, Southeast Asian Fisheries Development Center. 17pp.
- Baliao, D.D.; De los Santos, M.A.; Rodriguez, E.M. and Ticar, R.B.** (1998). Grouper culture in brackishwater ponds: Aquaculture Department, Southeast Asian Fisheries Development Center. 28pp.
- Chan, T.Y.** (2015). Ciguatera fish poisoning in East Asia and southeast Asia. *Marine drugs* 13: 3466-3478.
- Chiu, S.T.; Tsai, R.T.; Hsu, J.P.; Liu, C.H. and Cheng, W.** (2008). Dietary sodium alginate administration to enhance the non-specific immune responses, and disease resistance of the juvenile grouper *Epinephelus fuscoguttatus*. *Aquaculture* 277: 66-72.
- Craig, M.T. and Hastings, P.A.** (2007). A molecular phylogeny of the groupers of the subfamily Epinephelinae (Serranidae) with a revised classification of the Epinephelini. *Ichthyological Research* 54: 1-17.
- Craig, M.T.; de Mitcheson, Y.S. and Heemstra, P.C.** (2011). Groupers of the world: a field and market guide: NISC Grahamstown. 424pp.
- Donaldson, T.J.** (1989). Pair spawning of *Cephalopholis boenack* (Serranidae). *Japanese Journal of Ichthyology* 35: 497-500.
- Frisch, A. and Hobbs, J.P.** (2007). In vitro hybridization of coral trouts, *Plectropomus leopardus* (Lacepede, 1802) and *Plectropomus maculatus* (Bloch, 1790): a preliminary investigation. *Aquaculture Research* 38: 215.
- Fukuhara, O.** (1989). A review of the culture of grouper in Japan. *Bull. Nansei Reg. Fish. Res. Lab* 22: 47-57.
- Gaboriau, M.; Ponton, D.; Darius, H.T. and Chinain, M.** (2014). Ciguatera fish toxicity in French Polynesia: size does not always matter. *Toxicon* 84: 41-50.
- Gillespie, N.C.; Lewis, R.J.; Holmes, M.J.; Bourke, J.B.; Pearn, J.H.; Bourke, A.T. and Shields, W.J.** (1986). Ciguatera in Australia: occurrence, clinical features, pathophysiology and management. *Medical Journal of Australia* 145: 584-590.
- Giusti, A.; Armani, A. and Sotelo, C.G.** (2017). Advances in the analysis of complex food matrices: Species identification in surimi-based products using Next Generation Sequencing technologies. *PloS one* 12: 1-18.
- Glamuzina, B.; Glavić, N.; Skaramuca, B.; Kozul, V. and Tutman, P.** (2001). Early development of the hybrid *Epinephelus costae*♀ × *E. marginatus*♂. *Aquaculture* 198: 55-61.
- Halim, A.** (2001). Grouper culture: an option for grouper management in Indonesia. *Coastal Management* 29: 319-326.
- Handy, S.M.; Deeds, J.R.; Ivanova, N.V.; Hebert, P.D.; Hanner, R.H.; Ormos, A.; Weigt, L.A.; Moore, M.M. and Yancy, H.F.** (2011). A single-laboratory validated

- method for the generation of DNA barcodes for the identification of fish for regulatory compliance. *Journal of AOAC International* 94: 201-210.
- Hebert, P.D.; Cywinska, A.; Ball, S.L. and Dewaard, J.R.** (2003). Biological identifications through DNA barcodes. *Proceedings of the Royal Society of London. Series B: Biological Sciences* 270: 313-321.
- Heemstra, P.C.** (1993). Groupers of the world (Family Serranidae, Subfamily Epinephelinae). An annotated and illustrated catalogue of the grouper, rockcod, hind, coral grouper and lyretail species known to date. *FAO species catalogue* 16. 301 pp.
- Heemstra, P.C. and Randall, J.E.** (1993). Groupers of the world. *FAO Fisheries synopsis no. 125* vol. Food and Agriculture Organization, Rome. 301pp.
- Hickling, C.F.** (1968). *The farming of fish*: Pergamon Press. 88pp
- Ismi, S.** (2014). Peningkatan produksi dan kualitas benih kerapu dengan program hybridisasi. *Jurnal Oceanologi Indonesia* 1(1): 1-5.
- James, C.; Al-Thobaiti, S.; Rasem, B. and Carlos, M.** (1999). Potential of grouper hybrid (*Epinephelus fuscoguttatus* x *E. polyphkadion*) for aquaculture. *Naga, the ICLARM Quarterly* 22: 19-23.
- Jefri, E.; Zamani, N.P.; Subhan, B. and Madduppa, H.H.** (2015). Molecular phylogeny inferred from mitochondrial DNA of the grouper *Epinephelus* spp. in Indonesia collected from local fish market. *Biodiversitas Journal of Biological Diversity* 16(2):254-263.
- Kadir, N.H.A.; Piah, R.M. and Ambak, M.A.** (2018). Population Characteristics of Areolate Grouper *Epinephelus areolatus* (Forsskål 1775) from Terengganu Waters, Malaysia. *Asian Fisheries Science* 31: 276-283.
- Kiriyakit, A.; Gallardo, W.G. and Bart, A.N.** (2011). Successful hybridization of groupers (*Epinephelus coioides* x *Epinephelus lanceolatus*) using cryopreserved sperm. *Aquaculture* 320: 106-112.
- Kumar, S.; Stecher, G. and Tamura, K.** (2016). MEGA7: molecular evolutionary genetics analysis version 7.0 for bigger datasets. *Molecular biology and evolution* 33: 1870-1874.
- Lakra, W.; Verma, M.; Goswami, M.; Lal, K.K.; Mohindra, V.; Punia, P.; Gopalakrishnan, A.; Singh, K.; Ward, R.D. and Hebert, P.** (2011). DNA barcoding Indian marine fishes. *Molecular Ecology Resources* 11: 60-71.
- Lewis, N.D.** (1986). Epidemiology and Impact of Ciguatera. *Marine fisheries review*: 6.
- Limmon, G.V.; Rojoly, F.; Khouw, A.S; Manuputty, G. and Pattikawa J.A.** (2017). The Diversity of Grouper (Epinephelinae) in Ambon Island, Maluku, Indonesia. *Future Collaboration on Island Studies between Pattimura University and Kagoshima University*: 23-29.
- Luan, G.H.; Luin, M.; Shapawi, R.; Fui Fui, C. and Senoo, S.** (2016). Egg development of backcrossed hybrid grouper between OGGG (*Epinephelus coioides* x *Epinephelus lanceolatus*) and giant grouper (*Epinephelus lanceolatus*). *Int. J. of Aquatic Science* 7: 13-18.
- Meyer, C.P.; and Paulay, G.** (2005). DNA barcoding: error rates based on comprehensive sampling. *PLoS biology* 3: e422.
- Montejo, U.M.; Tanyag, B.E.; Perelonia, K.B.S.; Cambia, F.D. and Oshiro, N.** (2020). Ciguatera in the Philippines: Examining Reef Fish Vectors and Its Causative

- Benthic Dinoflagellates in Visayan and Sibuyan Seas. *The Philippine Journal of Fisheries* 27: 19-29.
- Morris, A.V.; Roberts, C.M. and Hawkins JP.** (2000). The threatened status of groupers (Epinephelinae). *Biodiversity & Conservation* 9: 919-942.
- Muths, D. and Bourjea, J.** (2011). Characterization of thirteen new polymorphic microsatellite markers from the honeycomb grouper *Epinephelus merra*. *Conservation genetics resources* 3: 629-631.
- Muths, D.; Tessier, E. and Bourjea, J.** (2015). Genetic structure of the reef grouper *Epinephelus merra* in the West Indian Ocean appears congruent with biogeographic and oceanographic boundaries. *Marine Ecology* 36: 447-461.
- Nuraini, S. and Hartati, S.** (2006). Type groupers (Serranidae) Bubu catch in the seas of the Saleh Bay, Sumbawa. *Proceedings of the National Seminar on Fish IV, Jatiluhur.* August 29-30.
- Parentrengi, A. and Tenriulo, A.** (2008). Genetic Variability and Population Structure of Grouper (*Epinephelus suillus*) from Makassar Strait and Bone Bay, South Sulawesi, Indonesia. *Indonesian Aquaculture Journal* 3: 77-87.
- Pepe, T.; Trotta, M.; Di Marco, I.; Anastasio, A.; Bautista, J.M. and Cortesi, M.L.** (2007). Fish species identification in surimi-based products. *Journal of agricultural and food chemistry* 55: 3681-3685.
- Pomeroy, R.S.** (2002). The status of grouper culture in Southeast Asia. *SPC Live Reef Fish Information Bulletin*: 22-26.
- Randall, J.E.** (1958). A review of ciguatera, tropical fish poisoning, with a tentative explanation of its cause. *Bulletin of Marine Science* 8: 236-267.
- Randall, J.E. and Heemstra, P.C.** (1991). Revision of Indo-Pacific groupers (Perciformes: Serranidae: Epinephelinae), with descriptions of five new species. *Indo-Pacific Fishes* 20, 1-332.
- Rimmer, M.** (2000). Review of grouper hatchery technology. *SPC Live Reef Fish Information Bulletin* 7: 14-19.
- Rocha, L. and Bowen, B.** (2008). Speciation in coral- reef fishes. *Journal of Fish Biology* 72: 1101-1121.
- Sadovy de Mitcheson, Y.; Craig, M.T.; Bertoncini, A.A.; Carpenter, K.E.; Cheung, W.W.; Choat, J.H.; Cornish, A.S.; Fennessy, S.T.; Ferreira, B.P. and Heemstra, P.C.** (2013). Fishing groupers towards extinction: a global assessment of threats and extinction risks in a billion dollar fishery. *Fish and fisheries* 14: 119-136.
- Sadovy, Y.** (1997). Ciguatera hits Hong Kong live reef fish trade. *SPC Fish. Newsletter* 83 (October–December), 26-28.
- Shapawi, R.; Abdullah, F.C.; Senoo, S. and Mustafa, S.** (2019). Nutrition, growth and resilience of tiger grouper (*Epinephelus fuscoguttatus*)× giant Grouper (*Epinephelus lanceolatus*) hybrid- a review. *Reviews in Aquaculture* 11: 1285-1296.
- Shapiro, D.Y.** (1987). Reproduction in groupers. *Tropical snappers and groupers: biology and fisheries management*: 295-327.
- Shpigel, M. and Fishelson, L.** (1989). Food habits and prey selection of three species of groupers from the genus *Cephalopholis* (Serranidae: Teleostei). *Environmental Biology of Fishes* 24: 67-73.

- Shpigel, M. and Fishelson, L.** (1991). Experimental removal of piscivorous groupers of the genus *Cephalopholis* (Serranidae) from coral habitats in the Gulf of Aqaba (Red-Sea). *Environmental Biology of Fishes* 31: 131-138.
- Siau, Y.** (1994). Population structure, reproduction and sex- change in a tropical East Atlantic grouper. *Journal of Fish Biology* 44: 205-211.
- Sugama, K.; Tridjoko, T.; Haryanti, H. and Cholik F.** (2017). Genetic Variation and Population Structure in the Humpback Grouper, *Cromileptes Altivelis*, throughout its Range in Indonesian Waters. *Indonesian Fisheries Research Journal* 5: 32-38.
- Sugama, K.; Rimmer, M.; Ismi, S.; Koesharyani, I.; Suwirya, K.; Giri, N. and Alava, V.** (2012). Hatchery management of tiger grouper (*Epinephelus fuscoguttatus*): a best-practice manual: Australian Centre for International Agricultural Research (ACIAR). 66pp.
- Susanto, A.H.; Nuryanto, A. and Soedibja, P.H.T.** (2011). Phylogeography and Genetic Diversity of Humpback Grouper *Cromileptes altivelis* based on Cytochrome C Oxidase I. *Jurnal Natur Indonesia* 14: 47-51.
- Sutarmat, T. and Yudha, H.T.** (2016). Analisis keragaan pertumbuhan benih kerapu hibrida hasil hibridisasi kerapu macan (*Epinephelus fuscoguttatus*) dengan kerapu kertang (*Epinephelus lanceolatus*) dan kerapu batik (*Epinephelus microdon*). *Jurnal Riset Akuakultur* 8: 363-372.
- Sutthinon, P.; Thongprajukaew, K.; Saekhow, S. and Ketmanee, R.** (2015). Juvenile hybrid grouper (*Epinephelus coioides* × *E. lanceolatus*) are euryhaline and can grow in a wide range of salinities. *Aquaculture International* 23: 671-682.
- Tokeshi, M.; Arakaki, S. and Daud, J.** (2013). Consuming Diversity: Analysis of Seasonal Catch Patterns in Multispecies Artisanal Reef Fisheries in North Sulawesi, Eastern Indonesia I. *Pacific Science* 67: 1-13.
- Toyoda, M.; Kingkate, A.; Jaengsawang, C.; Thanissorn, W. and Halilamian, C.** (1981). Survey of ciguatera and tetrodotoxin of blowfish in Thailand. *Journal of Food Safety* 3: 207-213.
- Unsworth, R.K.; Powell, A.; Hukom, F. and Smith, D.J.** (2007). The ecology of Indo-Pacific grouper (Serranidae) species and the effects of a small scale no take area on grouper assemblage, abundance and size frequency distribution. *Marine Biology* 152: 243-254.
- Van Herwerden, L.; Davies, C. and Choat, J.** (2002). Phylogenetic and evolutionary perspectives of the Indo-Pacific grouper *Plectropomus* species on the Great Barrier Reef, Australia. *Journal of fish biology* 60: 1591-1596.
- Ward, R.D.; Zemlak, T.S.; Innes, B.H.; Last, P.R. and Hebert, P.D.** (2005). DNA barcoding Australia's fish species. *Philosophical Transactions of the Royal Society of London B: Biological Sciences* 360: 1847-1857.
- Waugh, J.** (2007). DNA barcoding in animal species: progress, potential and pitfalls. *BioEssays* 29: 188-197.
- Yu, H-N.; Lin, X-T.; Liang, X-F.; Xu, Z-N. and Meng, Y-R.** (2004). Growth of *Cromileptes altivelis* and *Epinephelus coioides* in closed recirculating aquacultural system *Marine Sciences*. 28(4):1-4.
- Yulianto, I.; Hammer, C.; Wiryawan, B. and Palm, H.** (2015). Potential and risk of grouper (*Epinephelus spp.*, *Epinephelidae*) stock enhancement in Indonesia. *Journal of coastal zone management* 18: 1-9.

# Genetic diversity Serranidae Sunda 2020

---

## ORIGINALITY REPORT

---

7%

SIMILARITY INDEX

0%

INTERNET SOURCES

7%

PUBLICATIONS

0%

STUDENT PAPERS

---

## PRIMARY SOURCES

---

- 1 Almazari, I., J.-M. Park, S.-A. Park, J.-Y. Suh, H.-K. Na, Y.-N. Cha, and Y.-J. Surh. <1%  
"Guggulsterone induces heme oxygenase-1 expression through activation of Nrf2 in human mammary epithelial cells: PTEN as a putative target", *Carcinogenesis*, 2012.  
Publication
  - 2 Muslich, Lisa Tenriesa, Sharon Y.A.M. Villanueva, Muhammad Yunus Amran, Takaya Segawa, Mitsumasa Saito, and Shin-ichi Yoshida. <1%  
"Characterization of *Leptospira* infection in suckling and weaning rat pups", *Comparative Immunology Microbiology and Infectious Diseases*, 2015.  
Publication
  - 3 P. R. Teske, A. Oosthuizen, I. Papadopoulos, N. P. Barker. <1%  
"Phylogeographic structure of *Octopus vulgaris* in South Africa revisited: identification of a second lineage near Durban harbour", *Marine Biology*, 2007  
Publication
-

4

Philippe Borsa, Collin T. Williams, Ashlie J. McIvor, Michael L. Berumen. "Neotype designation and re-description of Forsskål's reticulate whipray *Himantura uarnak*", Cold Spring Harbor Laboratory, 2020

Publication

&lt;1 %

5

Ayu-Lana-Nafisyah, Endang-Dewi-Masithah, Kazumi Matsuoka, Mirni-Lamid et al. "Cryptic occurrence of *Chattonella marina* var. *marina* in mangrove sediments in Probolinggo, East Java Province, Indonesia", Fisheries Science, 2018

Publication

&lt;1 %

6

Ahmad Fahrul Syarif, Dinar Tri Seolistyowati, Harton Arfah. "Performa Pertumbuhan Hibrida Antara Ikan Kerapu Batik Betina (*Epinephelus microdon*) Dengan Ikan Kerapu Kertang Jantan (*E. lanceolatus*) yang Dipelihara Pada Salinitas Berbeda", Journal of Tropical Marine Science, 2019

Publication

&lt;1 %

7

Chaudhary, Dharmendra K., Neeraj Sood, T. Raja Swaminathan, Gaurav Rathore, P.K. Pradhan, N.K. Agarwal, and J.K. Jena. "Establishment and characterization of an epithelial cell line from thymus of *Catla catla* (Hamilton, 1822)", Gene, 2013.

Publication

&lt;1 %



8

Gershom A. Defe, Ace Zander C. Antonio. "Multi-parameter Water Quality Monitoring Device for Grouper Aquaculture", 2018 IEEE 10th International Conference on Humanoid, Nanotechnology, Information Technology, Communication and Control, Environment and Management (HNICEM), 2018

Publication

---

<1 %

9

KD Sherman, CP Dahlgren, JR Stevens, CR Tyler. "Integrating population biology into conservation management for endangered Nassau grouper *Epinephelus striatus*", Marine Ecology Progress Series, 2016

Publication

---

<1 %

10

Marques, S., and B. P. Ferreira. "Age and growth of the mutton hamlet *Alphesthes afer*, with a review of the size and age of sex change among epinephelids : age and growth of small epinephelids", Journal of Fish Biology, 2016.

Publication

---

<1 %

11

Simone Riss, Wolfgang Arthofer, Florian M. Steiner, Birgit C. Schlick-Steiner et al. "Do genome size differences within *Brachionus asplanchnoidis* (Rotifera, Monogononta) cause reproductive barriers among geographic populations?", Hydrobiologia, 2016

<1 %

12 Montanari, Stefano R., Jean-Paul A. Hobbs, Morgan S. Pratchett, Line K. Bay, and Lynne van Herwerden. "Does genetic distance between parental species influence outcomes of hybridisation among coral reef butterflyfishes?", *Molecular Ecology*, 2014.

Publication

---

13 Muths, Delphine, Emmanuel Tessier, and Jerome Bourjea. "Genetic structure of the reef grouper *Epinephelus merra* in the West Indian Ocean appears congruent with biogeographic and oceanographic boundaries", *Marine Ecology*, 2014.

Publication

---

14 *Pigment & Resin Technology*, Volume 43, Issue 2 (2014-03-28)

Publication

---

15 Riou, A., G. Bareille, F. Morat, K. Pothin, N. Bru, and P. Chabanet. "The usefulness of otolith chemistry to determine the life history of the honeycomb grouper around Reunion Island (SW Indian Ocean)", *Fisheries Research*, 2016.

Publication

---

16 Y. Luo, T. Yang. "Seasonal population dynamics of the monogeneans *Pseudorhabdosynochus coioides* and *P.*

serrani on wild versus cultured groupers in  
Daya Bay, South China Sea", *Helminthologia*,  
2010

Publication

---

17

Young-Hwa Kim, Gyung Hye Huh. "Members  
of the ran family of stress-inducible small  
GTP-binding proteins are differentially  
regulated in sweetpotato plants", *Journal of  
Plant Biotechnology*, 2013

Publication

---

18

A Muzaki, S B M Sembiring, G N Permana, K  
Mahardika, Haryanti. "The development of  
the reproductive organs of the hybrid grouper  
cantik (*Epinephelus fuscoguttatus* x *E.*  
*polyphekadion*)", *IOP Conference Series: Earth  
and Environmental Science*, 2021

Publication

---

19

A. J. Edwards, A. C. Gill, P. O. Abohweyere. "A  
revision of F. R. Irvine's Ghanaian marine  
fishes in the collections of The Natural History  
Museum, London", *Journal of Natural History*,  
2003

Publication

---

20

Abdul Halim. "Grouper Culture: An Option for  
Grouper Management in Indonesia", *Coastal  
Management*, 2001

Publication

---

<1 %

<1 %

<1 %

<1 %

21

Catherine Cheng Yun Chieng, Hassan M. Daud, Fatimah M. Yusoff, Maha Abdullah. "Immunity, feed, and husbandry in fish health management of cultured *Epinephelus fuscoguttatus* with reference to *Epinephelus coioides*", *Aquaculture and Fisheries*, 2018

Publication

&lt;1 %

22

Jiansheng Huang, Gang Chen, Zhongliang Wang, Jiandong Zhang. " Use of response surface methodology to study the combined effects of temperature and salinity on hatching and deformity of the hybrid grouper, ( $\text{♀}$ ) $\times$ ( $\text{♂}$ ) ", *Aquaculture Research*, 2018

Publication

&lt;1 %

23

N Fadli, A Damora, Z A Muchlisin, I Dewiyanti et al. "A preliminary study on biological aspects of the orange-spotted grouper (*Epinephelus coioides*) harvested in the northern coast of Aceh, Indonesia", *IOP Conference Series: Earth and Environmental Science*, 2021

Publication

&lt;1 %

24

Simon G. Alcantara, Apolinario V. Yambot. "DNA barcoding of commercially important Grouper species (Perciformes, Serranidae) in the Philippines", *Mitochondrial DNA Part A*, 2014

Publication

&lt;1 %

25 Irfan Yulianto, Cornelius Hammer, Budy Wiryawan, Harry W. Palm. "Fishing-induced groupers stock dynamics in Karimunjawa National Park, Indonesia", Fisheries Science, 2015  
Publication <1 %

---

26 Jonas P. Quilang, Shiny Cathlyne S. Yu. "DNA barcoding of commercially important catfishes in the Philippines", Mitochondrial DNA, 2013  
Publication <1 %

---

27 Worawut KOEDPRANG. "Evaluation of genetic diversity of eight grouper species Epinephelus spp. based on microsatellite variations", Fisheries Science, 4/2007  
Publication <1 %

---

Exclude quotes On

Exclude matches Off

Exclude bibliography On

# Genetic diversity Serranidae Sunda 2020

---

GRADEMARK REPORT

---

FINAL GRADE

**/100**

GENERAL COMMENTS

**Instructor**

---

PAGE 1

---

PAGE 2

---

PAGE 3

---

PAGE 4

---

PAGE 5

---

PAGE 6

---

PAGE 7

---

PAGE 8

---

PAGE 9

---

PAGE 10

---

PAGE 11

---

PAGE 12

---

PAGE 13

---