



PROCEEDING

THE 2nd INTERNATIONAL CONFERENCE POSTGRADUATE SCHOOL - ICPS 2018



**“ Innovation of Technology and Bureaucracy towards
Good Governance to Improve the Nation’s
Competitiveness”**

**Postgraduate School, Universitas Airlangga
Surabaya, July 10th - 11th 2018**

Supported by :



Sponsored by :



Organized by :



Home About Us Ethics of Publication Ethics of Review Contacts Sitemap Papers Papers/2022 Login Sign-Up

SCITEPRESS
DIGITAL LIBRARY

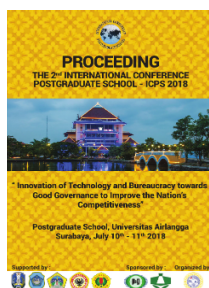
Search by any title, abstract, authors...

Research.Publish.Connect.

Proceedings

Proceedings of the 2nd International Conference Postgraduate School

July 10-11, 2018, in Surabaya, Indonesia



Editors: Subagyo Adam ¹; Ahmad Yudianto ¹; Christrijogo Sumartono ²; Sri Herianingrum ¹; Sarwirini ¹; Suparto Wijoyo ¹; Suryani Dyah Astuti ¹ and Windijarto ¹

Affiliations: ¹ Universitas Airlangga, Indonesia ; ² Anesthesiology and Reanimation Department, Faculty of Medicine, Universitas Airlangga, Indonesia

ISBN: 978-989-758-348-3

Conference Link: <http://pasca.unair.ac.id/icpsuas/>

Foreword: Assalamualaikum warrahmatullah wabarakatuh Greetings for all of you Excellency Prof. Dr. Hj. Sri Iswati, S.E, M.Si. Excellency Dr. Soekarwo S.H, M.H Excellency Dr. Ir. H. Sambari Halim Radianto, S.T, M.Si The Keynote speakers, invited speakers, presenters and participants of the conference Ladies and gentlemen Alhamdulillahirabbil 'alamin, we are here to The Second International Conference Postgraduate School with the theme Innovation of Technology and Bureaucracy Towards Good Governance to improve the Nation's Competitiveness. Universitas Airlangga is delighted to welcome you all in this two day conference. Ladies and gentlemen A university role is one of many pillars to build a nation that has great civilization, government system, human resources, natural resources, and other potentials It is our roles as academics and as a part of the university in maximizing the potentials to generally develop our nation or to specifically increase our nation's **(More)**

Volumes:

Vol. 1 - 978-989-758-348-3

Papers

Authors

Show papers

Moderating Effect of Employability on the Relationship Between Job Insecurity and Motivation

P. 5 - 9

Aditya Nugroho , Windijarto and Dewi Retno Suminar

DOI:10.5220/0007536600050009

The Empowerment of Micro And Small Industry of Wood Lathe By Department of Industry and Commerce - Case Study At Tanggung Village, Blitar, Indonesia

P. 10 - 20

Laily Nur Hasanah DOI: 10.5220/0007536700100020	
The Development Competence of Educational Staff Division in the Faculty of Veterinary Medicine Universitas Airlangga Through Training and Education Method	P. 21 - 27
Ec Mardiana DOI: 10.5220/0007536800210027	
Revitalization Of Religious Tourism Sidoarjo	P. 28 - 35
Mohammad Mochtar M DOI: 10.5220/0007536900280035	
Competency-Based: System Model Development Strategy to Increase Self-Performance	P. 36 - 40
Amaliyah Amaliyah DOI: 10.5220/0007537000360040	
The Analysis of Effective Recruitment towards Organizational Performance and Competitiveness in Rwanda	P. 41 - 44
Obed Nahayo DOI: 10.5220/0007537100410044	
The Influence Of Work Motivation And Organizational Culture On Improving Employee Performance In Financial Division At Companies In Energy Sector	P. 45 - 50
Dita Bagus Hendra K , Windijarto and Pinky Saptandari DOI: 10.5220/0007537200450050	
Additional Employee Income and Performance of Public Sector in East Java, Indonesia	P. 51 - 59
Windijarto , Falih Suaedi , Indrianawati Usman and Rooswanti Putri DOI: 10.5220/0007537300510059	
Efficiency Performance of Dompot Dhuafa Zakat Institutions: Using Data Envelopment Analysis Approach	P. 60 - 64
Ninda Ardiani and Sri Herianingrum DOI: 10.5220/0007537400600064	
The Impact of Government Bureaucracy System Change towards Staff Anxiety	P. 65 - 69
Moses Glorino Rumambo Pandin and Sri Rahayuningsih DOI: 10.5220/0007537500650069	
Islamic Social Entrepreneur Organization of Zakat Management in Empowerment of Socio-Economic Mustahiq in Indonesia	P. 70 - 75
Tika Widiastuti , M. Nafik Hadi Ryandhono , Irham Zaki , Imron Mawardi , Wisudanto and Taqiyah Dinda Insani DOI: 10.5220/0007537600700075	
Islamic Banking (iB) Logo: In Santri Perception to Use Islamic Banking Products in Indonesia	P. 76 - 80
Tate Agape Bawana , Imron Mawardi and Sri Herianingrum DOI: 10.5220/0007537700760080	
Islamic Family Budgeting	P. 81 - 84
Elsha Sophia and Muhamad Nafik Hadi Ryandono DOI: 10.5220/0007537800810084	
Restructuring of Non-Performing Financing of Murabaha Contracts in Sharia Banks	P. 85 - 88
Rachmi Cahya Amalia , Dina Fitriasia Septiarini , Sri Herianingrum and Achsania Hendratmi DOI: 10.5220/0007537900850088	
Analysis of Revenue Sharing and Liquidity for Total Profit Sharing Financing with	P. 89 - 92

BI Rate as a Moderation in Indonesia Sharia Commercial Bank and Sharia Bussiness Unit	
Farhadi Arifiansyah , Ari Prasetyo and Gancar Candra Premananto DOI:10.5220/0007538000890092	
Concept of Scarcity in the Islamic Economic Perspective	P. 93 - 96
Hanif Fadhillah , Muhammad Nafik , Ririn Ratnasari , Tika Widiastuti and Sri Herianingrum DOI:10.5220/0007538100930096	
Volunteer Management in Event Industry GIIAS SURABAYA AUTO SHOW 2017	P. 97 - 100
Afifah Rahmania , Windijarto and Indrianawati DOI:10.5220/0007538200970100	
The Influence of Compensation and Job Insecurity on Achievement Motivation on Contract Employees at The Gresik Gas Cogeneration Plant Project	P. 101 - 104
Baswara Pawitra and Muhammad Tahajjudi Ghifary DOI:10.5220/0007538301010104	
Determinant of Saving in Islamic Bank: Case Study in Indonesia	P. 105 - 110
Taufik Nugroho , M Faishol Luthfi and Sri Herianingrum DOI:10.5220/0007538401050110	
The Masalahah Principle against Sharia Financial Technology in Indonesia	P. 111 - 120
Fiska Silvia Raden Roro and Abd Shomad DOI:10.5220/0007538501110120	
E -Commerce On Tourism Village Development	P. 121 - 127
Aflit Nuryulia Praswati , Farid Wajdi and Muzakar Isa DOI:10.5220/0007538601210127	
The Role of Servant Leadership for Economic Development	P. 128 - 132
Rachmadita Grandiz L , Fira Nurafini and Ririn Tri Ratnasari DOI:10.5220/0007538701280132	
The Influence of Job Security, Organizational Support, and Psychological Contract on Job Satisfaction in Organization X	P. 133 - 136
Maindra Fauziannisa , Badri Munir Sukoco and Dewi Retno Suminar DOI:10.5220/0007538801330136	
Relationship between the Application of Good Islamic Business Governance and Voluntary Disclosure on Islamic Bank in Indonesia	P. 137 - 141
Moh Arifin , Imron Mawardi , Muhammad Nafik Hadi Ryandono , Sri Iswati and Bahrina Almas DOI:10.5220/0007538901370141	
The Influence of Non Performing Financing (NPF) and Return on Assets (ROA) Against Linkage Multifinance at Sharia Commercial Bank in Indonesia	P. 142 - 146
Safarinda Imani , Risma Ayu Kinanti , Achsanah Hendratmi , Tjiptohadi Sawarjuwono , Sri Herianingrum and Sri Iswati DOI:10.5220/0007539001420146	
Revitalization of Mosque Funds Management for Economic Empowerment	P. 147 - 150
Ully Nindyaningtyas , Ririn Tri Ratnasari and Sri Herianingrum DOI:10.5220/0007539101470150	
The Relation of Neurotic Personality and Impulsive Buying toward Adolescent in Tarakan	P. 151 - 154
Friska Indryani Sitorus and Paulus Eddy Suhartanto DOI:10.5220/0007539201510154	
Assessing "Preparing to Excel in Emergency Response (PEER) Project" in Organizational Capacity Response Quality Improvement	P. 155 - 158
Muhammad Kaimuddin , Setya Haksama and Samsriyaningsih Handayani	

DOI:10.5220/0007539301550158

Cryptocurrency Position in Islamic Financial System: A Case Study of Bitcoin P. 159 - 163

Nur Rizqi Febriandika and Raditya Sukmana

DOI:10.5220/0007539401590163

Implementation of the Principle of Unity in Business Activities Company - A Case Study on "X" Travel Indonesia P. 164 - 170

Abdullah Ahadish Shamad Muis , Tika Widiastuti , Puji Sucia Sukmaningrum and

Imron Mawardi

DOI:10.5220/0007539501640170

The Efficiency of Distribution of Zakat Fund at LAZNAS in Indonesia P. 171 - 175

Novi Nurul Aini , Ari Prasetyo and Tika Widiastuti

DOI:10.5220/0007539601710175

Effect of Financing of Revenue Sharing on Return on Assets of Sharia Commercial Banks in Indonesia P. 176 - 180

Faris Kurnia Hakim , Mauizhotul Hasanah and Sri Herianingrum

DOI:10.5220/0007539701760180

Implementation of Spiritual Capital in Islamic Perspective to Business Performance P. 181 - 185

Ziauddin Sardar , Muhammad Nafik Hadi Ryandono and Ririn Tri Ratnasari

DOI:10.5220/0007539801810185

Analysis of Public Expenditure Strategy on Social Fund Sector for Poverty Reduction of Indonesia Islamic Economic Perspective P. 186 - 191

Fatimatuzzahro and Sri Herianingrum

DOI:10.5220/0007539901860191

The Effects of Islamic Marketing Mix on Consumer Satisfaction and Consumer Loyalty P. 192 - 200

Muhammad Syaqui , Ririn Tri Ratnasari and Sri Herianingrum

DOI:10.5220/0007540001920200

Analysis the Effect of Third Party Funds, Non Performing Financing, Capital Adequacy Ratio, and Bank Indonesia Sharia Certificates toward Financing - Case Studies of Indonesia Islamic Banking Period 2010-2015 P. 201 - 209

Novelinda Nurul Firdaus , Sri Iswati and Amalia Rizki

DOI:10.5220/0007540102010209

SWOT Analysis on Interest Development of Cash Waqf of Moslem Productive Age Entrepreneurs in Surabaya P. 210 - 213

Fitryani and Atina Shofawati

DOI:10.5220/0007540202100213

The Insurance Agreement in the Urgency of Microcredit on Banking P. 214 - 219

Hilda Yunita Sabrie , Prawitra Thalib , Faizal Kurniawan and Yuniarti

DOI:10.5220/0007540302140219

Analysis of the Effect of Public E-Health Service Quality on the Creation of Public Value - Case Study: PMR Hospital Surabaya City P. 220 - 226

Ria Rizki Wardani and Erma Suryani

DOI:10.5220/0007540402200226

Device of Lymphedema Pump Therapy Based on Pressure Pump: Design and Development P. 231 - 235

Suryani Astuti , Deny Arifianto , Dewa Supartha , Alfian Putra and Tri Prijo

DOI:10.5220/0007540502310235

Characteristics of Composite Scaffold Chitosan-Chondroitin Sulphate / Hydroxyapatite as the Candidate of Bone Graft P. 236 - 243

Aminatun , Tia Rahayu Wijayanti , Dolfi Varton and Prihartini Widiyanti

DOI:10.5220/0007540602360243

Expression of Caspase-3 in the Liver and Spleen Rattus norvegicus Which Infects Bacteria Klebsiella pneumonia and Klebsiella pneumoniae Extended Spectrum Beta Lactamase P. 244 - 248

I Gede Andika Sukarya , Willy Sandhika and Agung Dwi Wahyu Widodo

DOI:10.5220/0007540702440248

Differences of Caspase-3 Expression in the Spleen and Liver of Sepsis Models in Rats Infected with Escherichia coli ESBL and Klebsiella pneumoniae Carbapenemase P. 249 - 252

Lisa Savitri , Willy Sandhika and Agung Dwi Wahyu Widodo

DOI:10.5220/0007540802490252

Differences Expression of Caspase-3 In Hepar and Spleen of Rattus norvegicus Infected with Methicillin Resistant Staphylococcus aureus and Enterococcus faecalis P. 253 - 257

Sri Wahyuni , Yoes Prijatna Dachlan and Agung Dwi Wahyu Widodo

DOI:10.5220/0007540902530257

Differences of Caspase-3 Expression in Liver and Spleen of Rattus norvegicus Infected with Streptococcus pyogenes and Acinetobacter baumannii P. 258 - 262

Nurul Amalia , Agung Dwi Wahyu Widodo and Willy Sandhika

DOI:10.5220/0007541002580262

Differences in Caspase-3 Expressions of Liver Organs and Spleen in Animals Model Rattus Norvegicus Infected with Candida Albicans and Candida Non Albican Fungus P. 263 - 268

Yanuar Kristanto , Willy Sandhika and Agung Dwi Wahyu Widodo

DOI:10.5220/0007541102630268

Different Expression of Caspase-3 in the Spleen and Liver of Rattus norvegicus Infected with Enterobacter cloacae and Proteus mirabilis as a Septic Model P. 269 - 273

Rina Purwati , Yoes Prijatna Dachlan and Agung Dwi Wahyu Widodo

DOI:10.5220/0007541202690273

Dental Cement Physical and Mechanical Properties by In Vivo Approach P. 274 - 280

Prihartini Widiyanti , Siswanto and Idha Sa'Ada

DOI:10.5220/0007541302740280

Cytokine Profile Analysis of IL - 1 β and TNF- α in Diabetic Patients Infected by C.albicans P. 281 - 284

Regina Purnama Dewi Iskandar and Retno Pudji Rahayu

DOI:10.5220/0007541402810284

Effect of Extrinsic Motivation on Adversity Quotient in Patients With HIV & AIDS P. 285 - 291

Yulia Dewi Puspitawati , Misutarno and Nursalam

DOI:10.5220/0007541502850291

Isolation and Detection of Escherichia Coli Trimethoprim Resistance Gene from Layer Chickens in East Java Province, Indonesia by Polymerase Chain Reaction P. 292 - 300

Emy Koestanti Sabdoningrum , Sri Hidanah , Sri Chusniati , Wiwik Misaco ,

Retno Sri Wahyuni and Laras Retno Kinasih Harianto

DOI:10.5220/0007541602920300

Mandibular Image Segmentation on the CT-Scan of the head using the Active Contour Method P. 301 - 305

Amillia Kartika Sari , Riries Rulaningtyas and Khusnul Ain

DOI:10.5220/0007541703010305

The Effect of Macrophage Dose to Secretion Interleukin 6 (IL-6) on Model of Tuberculosis Granuloma In Vitro P. 306 - 311

Imam Agus Faizal , Agung Dwi Wahyu Widodo and Jusak Nugraha

DOI:10.5220/0007541803060311

-
- 70% Ethylated and Non-Ethylated Swab: A Trace Evidence Recovery Method and Usefulness in Spectacles Forensic Evidence** P. 312 - 316
Simon Martin Manyanza Nzilibili , Muh. Abduh Dwi Putra and Ahmad Yudianto
DOI:10.5220/0007541903120316
-
- The Analysis of Victim Wound Quality and Quantity in Assuming The Perpetrator's Psychological Condition to Determine The Perpetrator's Legal Liability** P. 317 - 320
Ignatius N.S. , Mieke Sylvia Margaretha and Ahmad Yudianto
DOI:10.5220/0007542003170320
-
- Decidual Killer Immunoglobulin-Like Receptor (KIR)2DL1 Expression and the Onset of Preeclampsia, Birth Weight and Placental Weight in Early and Late Onset Preeclampsia** P. 321 - 324
Khairunnisa Abd Rauf , Erry Gumilar Dachlan and Ariyanto Harsono
DOI:10.5220/0007542103210324
-
- Correlation of Parasite Density with Plasma Level of TNF- α and IL-10 in Patients Infected by Plasmodium Vivax in East Sumba District, East Nusa Tenggara Province** P. 325 - 328
Frieti Vega Nela , Heny Arwati and Yoes Prijatna Dachlan
DOI:10.5220/0007542203250328
-
- The Effects of Environmental Temperature Exposure of Blood Spatter Towards Protein and Agglutinations Level in ABO Blood Typing** P. 329 - 332
Amanovitasari D. , Kahar K. , Prasetya R.A. , Lestari T.P. and Yudianto A.
DOI:10.5220/0007542303290332
-
- Bite Mark Analysis with "Stamping" Method in Child Abuse Case - A Case Report** P. 333 - 336
Dina Karimah Putri , Mieke Sylvia MAR and Ahmad Yudianto
DOI:10.5220/0007542403330336
-
- Effect of Meniran Extract (Phyllanthus niruri Linn.) to Alternate Antibiotic Growth Promoter (AGP) on Egg Quality and Economics Analysis of Layers Infected by Escherichia coli** P. 337 - 342
H. Sri , S.R. Rivienda , A.A. Ika , K. Emy , S. Koesnoto and F.L. Dika
DOI:10.5220/0007542503370342
-
- Effect of Tumor Necrosis Factor Alpha (Tnf-A) And Interleukin-10 (Il-10) Levels of Aggressive Periodontitis In Rats (Rattus Norvegicus) Induced by Aggregitibacter Actinomycetemcomitans** P. 343 - 350
Dwi Leni Yuliana , Yoes Prijatna Dachlan and Heny Arwati
DOI:10.5220/0007542603430350
-
- The Differences of the Result of Copper Test Using UV-Vis Spectrophotometry with Neocuproine Complexing Agent and AAS** P. 351 - 355
Indah Sari , Rima Merdaliani , Pra Dian Mariadi and Rosnita Sebayang
DOI:10.5220/0007542703510355
-
- The Effect Collagen to Granuloma Structure and Immune Response on Granuloma Tuberculosis Invitro Models** P. 356 - 360
Ira Pengesti , Agung Dwi Wahyu Widodo and Jusak Nugraha
DOI:10.5220/0007542803560360
-
- Laten Blood Detection Test Sensitivity of Lizard (Varanus salvator) Using Leuco Malachite Green (LMG) with Different Dilution** P. 361 - 364
Farah Aidah Nureza , Bilqisthi Ari Putra , Nadia Yohana and Djoko Legowo
DOI:10.5220/0007542903610364
-
- Quality and Sensitivity of Presumptive Blood Test of Chicken (Gallus gallus domesticus) Blood Using Leuco Malachite Green (LMG)** P. 365 - 367
Nadia Yohana , Bilqisthi Ari Putra , Farah Aidah Nureza and Djoko Legowo

DOI:10.5220/0007543003650367

The Difference of Chloride Levels from Blood Serum Centrifuge at 3662 RPM Speed for 10 Minutes and 20 Minutes P. 368 - 370

Rima Merdaliani , Indah Sari and Maria Nuraeni

DOI:10.5220/0007543103680370

Resistance Test of Vibrio Sp from Milkish (Chanos chanos) in Fishpond Jabon Sidoarjo to Heavy Metals and Antibiotics P. 371 - 375

Pratikah Verdianti , Fitriyati Mukhlisoh , Tuty Putri and Ayu Puspitasari

DOI:10.5220/0007543203710375

Spatial Analysis of the correlation between Topographic Wetness Index with Annual Parasites Incidence Malaria in South Central Timor District 2017 – Indonesia P. 376 - 380

Nelson , Iwan Dwi Laksono and Setya Haksama

DOI:10.5220/0007543303760380

The Resistance Profile Of Bacteria Salmonella Sp Towards Antibacterial Ethanol Extract Of Bidara Leaves (Ziziphus Mauritiana) P. 381 - 385

Fitriyati Mukhlisoh , Pratikah Verdianti and Dwi Krihariyani

DOI:10.5220/0007543403810385

The Effect of Macrophage Addition to Interleukin 10 (IL-10) in Tuberculosis Granuloma Model In Vitro P. 386 - 391

Dini Puspodewi , Agung Dwi Wahyu W and Jusak Nugraha

DOI:10.5220/0007543503860391

Effect of Macrophage Addition and Incubation Time to Interferon Gamma (IFN- γ) Levels on Tuberculosis Granulomas Invitro Models P. 392 - 397

Yusuf Eko Nugroho , Agung Dwi Wahyu Widodo and Jusak Nugraha

DOI:10.5220/0007543603920397

Analysis of Family Spiritual Factors with Resilience Theoretical Approach in Overcoming Problem of Family Stigma Endemic Leprosy at Community Health Service (Puskesmas) in Jombang Regency of East Java Indonesia P. 398 - 402

Nasrudin , Ah Yusuf , Rachmat Hargono and Tjipto Suwandi

DOI:10.5220/0007543703980402

The Consequences of Using Different Storage Temperature of 5°C and 10°C in The Identification of Blood Group ABO from Dental Pulp Samples P. 403 - 406

Riki Kristanto , Yanuar Kristanto and Slamet Soetanto

DOI:10.5220/0007543804030406

Potential of Black Seed Oil (Nigella Sativa) as Immunomodulator in Mice (Mus Musculus) Infected with Salmonella Typhimurium P. 407 - 411

Eka Yunita Wulandari , Dwi Krihariyani and Suliati

DOI:10.5220/0007543904070411

Correlation between Parasite Density with TNF- α and IL-10 in Plasmodium Falciparum Infected Patients in East Sumba District, East Nusa Tenggara Province P. 412 - 417

Akhmad Mubarak , Heny Arwati and Yoes Prijatna Dahlan

DOI:10.5220/0007544004120417

Correlation between Parasite Density with Plasma Levels of TNF- α and IL-10 in Malaria Mix Infection in East Sumba District, East Nusa Tenggara Province P. 418 - 421

Meka Faizal Farabi , Heni Arwati and Yoes Prijatna Dachlan

DOI:10.5220/0007544104180421

The Effect of Simulation Method for Flood Disaster Preparedness towards Nursing Students Faculty of Health Sciences Unipdu, Jombang, East Java, Indonesia P. 422 - 425

Sufendi Hariyanto , Kurniawati and Christrijigo Waloejo

DOI:10.5220/0007544204220425

Pathology and Abnormalities of the Teeth as a Biographical Profile in Uncovering the Identity of Unknown Skeletal Remains P. 426 - 430

Eko Prastyo , Ledy Ana Zulfatunnadiroh , Rachmadita Yoga Pratiwi and Myrtati Dyah Artaria

DOI:10.5220/0007544304260430

Bone Damage in the Antemortem, Perimortem, and Postmortem Periods: Looking for Traumatic Indications on Bones for Assessing the Quality of Life of Skeletal Remains P. 431 - 435

Ledy Ana Zulfatunnadiroh , Eko Prastyo , Reinaldy Octavianus Yan Dimpudus and Myrtati Dyah Artaria

DOI:10.5220/0007544404310435

Correlation between C-Reactive Protein Concentrations and Erythrocyte Sedimentation Rate in Patients with Positive Widal Test P. 436 - 439

Citra Yolanda Sari , Budi Santosa and M. Evy Prastiyanto

DOI:10.5220/0007544504360439

The Effect of Seawater on the Quantity of Dental Pulped DNA in Forensic Odontology Identification P. 440 - 445

Nazaratun Thaiyibah , Amalia Rozaiza Ightikhoma and Ahmad Yudianto

DOI:10.5220/0007544604400445

The Effect of Different Washing Treatment against Protein Quantity and Agglutination Level in Bloodstain for Forensic Identification P. 446 - 452

Arдын Pradana Putra , Hartono Kahar and Ahmad Yudianto

DOI:10.5220/0007544704460452

The Impact of Landslide in Tangkil Village Banaran Ponorogo - Incidents of Post Traumatic Stress Disorder P. 453 - 456

Siswanto Agung Wijaya , Mei Dia and Pramudana Ihsan

DOI:10.5220/0007544804530456

The Effect of Pakoasi (Chromolaena odorata L.) Leaf Extract in Curing Open Wound of Rabbit Skin (Oryctolagus cuniculus) P. 457 - 461

F Ramdani , M Sriasih and A.S. Drajat

DOI:10.5220/0007544904570461

Determination of rate chloride (Cl-) with Argentometric Mohr on Drinking Water Refill Tidiness in the Village Purwodadi Districts Kras Regency Kediri P. 462 - 464

Diah Ayu Nur Rochmawati and Mely Purnadianti

DOI:10.5220/0007545004620464

Optimization of Nano Coral-Based Synthesis Calcium Phosphate with Concentration Variation of Phosphoric Acid and Sintering Temperature P. 465 - 468

Siswanto , Mayasari Hariyanto and Siti Nurmala

DOI:10.5220/0007545104650468

Pulse Sequence 3D WATS for Evaluation Of The Anterior Cruciate Ligament (ACL) and Posterior Cruciate Ligament (PCL) on MRI Knee P. 469 - 474

Muhaimin Muhaimin , Sensusiati A.D , Kartikasari A , Muqmiroh L and Latifah R

DOI:10.5220/0007545204690474

Legal Law on Optical Consumer in Maintaining Visual Health P. 475 - 478

Dwi Rosdian Yuanita , Lilik Pujiastuti and Agung Sujatmiko

DOI:10.5220/0007545304750478

The Relation between Pregnant Women Characteristics and Their Perceptions towards Early Breastfeed Initiation (EBI) in Mataram City P. 479 - 483

Wahdana Kusuma Sari , Arдын Pradana Putra and Melinda Restu Putra

DOI:10.5220/0007545404790483

- Isolation and Identification of *Acanthus ilicifolius*-Associated Fungi and Investigation of Their Antibacterial Activity** P. 484 - 488
Farras Daffa Imtiyaz , Ferisa Lestari Nugrahayu , Kawidian Putri Bayu Alam , Insan Shiddiq and Hermin Pancasakti Kusuma Sari
DOI:10.5220/0007545504840488
-
- Waist-Hip Ratio of Boys and Girls based on Mother's Occupational Status at SMPN 22 Surabaya** P. 489 - 492
Rosida Clivara Sari Anjani and Myrtati D. Artaria
DOI:10.5220/0007545604890492
-
- Electrocution Death: Exit Mark Injury Use in the Suggestion of Body Posture during Forensic Investigation** P. 493 - 498
Pudji Hardjanto , Simon Martin Manyanza Nzilibili and Ahmad Yudianto
DOI:10.5220/0007545704930498
-
- Earphone Swab-Derived 126bp and 143bp mtDNA at D-loop Region - Electrophoretic Band Reaction on Room Temperature** P. 499 - 503
Ahmad Yudianto and Simon Martin Manyanza Nzilibili
DOI:10.5220/0007545804990503
-
- Low Cost Dual Frequency Impedance Analysis for Measuring Internal and External Celluler Fluid** P. 504 - 510
Khusnul Ain , R. Arif Wibowo , Soegianto Soelistiono , Lailatul Muniroh , Tri Anggono and M. Rizky Yusdy
DOI:10.5220/0007545905040510
-
- Android Application for Baby Immunization Schedule** P. 511 - 514
Erwin Sutanto , Chintya Mortisalma Romadhon , Fadilla Rahmania Kamil and Iqbal Maulana Rahman
DOI:10.5220/0007546005110514
-
- Modeling of Infant Mortality Rate in East Java Province Using Mixed Geographically Weighted Regression Approach for Improving Quality of Health Services** P. 515 - 519
Ninda Ayu Puspitasari , Nadia Murbani , Nopriyanti , Sartika Aprilia and Nur Chamidah
DOI:10.5220/0007546105150519
-
- Signal Tranducers and Activators Transcription (STAT) 5b Protein as A Candidate of Growth Promoter in Broiler Chicken** P. 525 - 527
Anwar Ma'ruf , Ratna Damayanti and Nove Hidajati
DOI:10.5220/0007546205250527
-
- The Potential of Protein Ghrelin as Material for Eenergy Balance Setting for Feed Efficiency in Broiler Chicken** P. 528 - 531
Nova Hidayati , Anwar Ma'ruf and Ratna Damayanti
DOI:10.5220/0007546305280531
-
- The Test of *Saccharomyces* sp. Potential Filtrate to Inhibit The Growth of *Aspergillus flavus* FNCC6109 Broiler Chicken Concentrate Feed Model** P. 532 - 536
Putu Angga Wiradana , Ida Bagus Gede Darmayasa and Ngurah Intan Wiratmin
DOI:10.5220/0007546405320536
-
- The Potential of Antigenic Protein of *Sarcoptes scabiei* as a Serological Diagnostic Candidate for Scabies in Goats** P. 537 - 540
Nunuk Dyah Retno Lastuti , Dony Chrismanto , Poedji Hastutiek and Agus Sunarso
DOI:10.5220/0007546505370540
-
- Identification and Determination of Total Flavonoids in Ethanol Extract of Old and Young *Angsana* Leaves (*Pterocarpus indicus* Willd.) Using Visible Spectrophotometry** P. 541 - 544
M.A.H.F Fernanda , R.D. Andriani , Z. Estulengani and G.G. Kusumo
DOI:10.5220/0007546605410544

<p>Leukocyte Count and Differential Leukocyte Count of Carp (<i>Cyprinus carpio</i> Linn) after Infected by <i>Aeromonas salmonicida</i></p> <p>Abdika Dwi Afyanti , M. Gandul Atik Yuliani and Didik Handijatno DOI:10.5220/0007546705450549</p>	P. 545 - 549
<p>Evaluation of Implementation of Occupational Health Safety Management System (OHSMS) in PT. X, Magetan, East Java</p> <p>Achmad Khoirur Rozi DOI:10.5220/0007546805500555</p>	P. 550 - 555
<p>The Effect of Tadoples (<i>Rana catesbeiana</i>) Serum on Total and Differential Leukocyte in Rats (<i>Rattus norvegicus</i>) That Have Been Induced With Dimethylbenz-α-anthracene as Animal MODEL of Skin Cancer</p> <p>Nur Prabowo Dwi Cahyo , Prima Ayu Wibawati , Hardayay Primarizky , Ragil Angga Prastiya , Muhammad Thohawi Elziyad Purnama and Ratna Damayanti DOI:10.5220/0007546905560560</p>	P. 556 - 560
<p>The Effect of Alpha-mangostin in Glucose Level, Cholesterol Level, and Diameter of the Islets of Langerhans of STZ-induced Diabetic Mice</p> <p>Saikhu Akhmad Husen , Salamun , Arif Nur Muhammad Ansori , Raden Joko Kuncoroningrat Susilo , Suhailah Hayaza and Dwi Winarni DOI:10.5220/0007547005610566</p>	P. 561 - 566
<p>Amino Acid and Proximate Compositions of Cultured and Wild <i>Oreochromis niloticus</i> (Linnaeus 1758) from Makurdi-Nigeria</p> <p>A.S. Nege and E. T. Akange DOI:10.5220/0007547105670570</p>	P. 567 - 570
<p>Prevalence of Ancylostomiasis in Pet Cats from Banyuwangi City, East Java Province</p> <p>Aditya Yudhana , Ratih Novita Praja and Fifi Anik Suroiyah DOI:10.5220/0007547205710574</p>	P. 571 - 574
<p>Acupuncture Can Increase Spermatogenic Cells in Albino Rats (<i>Rattus norvegicus</i>) Exposed by Heatstroke</p> <p>Muhammad Thohawi Elziyad Purnama , Imas Hapsari Rahmaningtyas , Ainun Septia Putri , Angela Swasti Ivana Lee , Fachrun Nisa Tatimma and Herlina Masyitoh DOI:10.5220/0007547305750577</p>	P. 575 - 577
<p>Production of Rabbit Anti-Excretory/Secretory Product of <i>Fasciola gigantica</i> Lombok Isolate Antibody</p> <p>Made Sriasih , Sulaiman Ngongu Depamede , Djoko Kisworo and Galuh Tresnani DOI:10.5220/0007547405780582</p>	P. 578 - 582
<p>Implementation of Fractional Logistic Growth Model in Describing Rooster Growth</p> <p>Windarto , Eridani and Utami Dyah Purwati DOI:10.5220/0007547505830586</p>	P. 583 - 586
<p>The Morphology of Contaminant Organism in <i>Kappaphycus alvarezii</i> Tissue Culture</p> <p>Ulfatus Zahroh and Apri Arisandi DOI:10.5220/0007547605870594</p>	P. 587 - 594
<p>The Perspective of Small-Scale Fisherman Toward the Seagrass Conservation Contributes to the Sustainability of Friendly Environmental: a Case Study in Coastal Waters of East Lombok</p> <p>Abdul Syukur , Mahrus and Syachruddin AR DOI:10.5220/0007547705950598</p>	P. 595 - 598
<p>The Perspective of Local Community's on Mangrove Resilience and Needs Conservation Along the Southern Coast of Lombok Island, Indonesia</p>	P. 599 - 603

Agil Al Idrus , Abdul Syukur and Lalu Zulkifli

DOI:10.5220/0007547805990603

DEJUNGKIL (Bran, Corn, Meal) as Nutritional Formula for Free-Range Chicken (Gallus Domesticus) Egg Production Increase P. 604 - 607

Palestin Binti Djazuli and Era Hari Mudji

DOI:10.5220/0007547906040607

The Level of Leukocytes, Eosinophils, Monocytes, and Lymphocytes in Mice (Mus musculus) on Post-Inoculation of Trypanosoma evansi P. 608 - 610

Marek Yohana Kurniabudhi , Era Hari Mudji and Rini Fajarwati

DOI:10.5220/0007548006080610

The Effectiveness of Paris Agreement Regime in Control Global Warming in the Field of Food Security in Indonesia P. 615 - 621

Suparto Wijoyo , Bagus Oktafian Abrianto , Wilda Prihatiningtyas and Fitri

Nur Amalia

DOI:10.5220/0007548106150621

A Simplification of Industrial Relation Dispute Solution to Improve the Nation's Competitiveness P. 622 - 626

Lanny Ramli

DOI:10.5220/0007548206220626

The Human Rights City Award: Sociolegal Study P. 627 - 631

Kurnia Indawati

DOI:10.5220/0007548306270631

The Policy of Central Borneo Provincial Government on Indigenous Peoples' Land Rights and Its Implications to Indonesia's Positive Laws P. 632 - 635

Ritwan Imanuel Tarigan

DOI:10.5220/0007548406320635

Law, Religious Freedom and National Development in Indonesia P. 636 - 640

Abednego Adinugroho

DOI:10.5220/0007548506360640

The Privacy Challenge in the 'Smart Era': A Study of the Implementation of e-Government in Surabaya P. 641 - 644

Masitoh Indriani and Ekawestri Prajwalita Widiati

DOI:10.5220/0007548606410644

Responsibility and Liability of Marine Pollution by Oil - Balikpapan Bay Pollution Case P. 645 - 648

Dina Sunyowati and Annisa Firdhausy

DOI:10.5220/0007548706450648

Distinction Principle in International Humanitarian Law Related to Civilian Objects and Military Objects P. 649 - 652

Eno Prasetiawan , Eka Widi Astuti , Helmi Amnihar and Febryan Topo Ruru Artha

DOI:10.5220/0007548806490652

Criminal Profile of Pedophiles in East Java P. 653 - 659

Reno Fitria Sari and Margareta Margareta

DOI:10.5220/0007548906530659

Constitutional Court Decision Number 46 / Puu-Viii / 2010 Reviewed from the Perspective of Adat Law, Burgerlijk Wetboek (Bw) and Islamic Law P. 660 - 663

Hendra Eka Saputra , Irham Zaki and Muhammad Ubaidillah Al Mustofa

DOI:10.5220/0007549006600663

The Challenges of Implementing Intelligence-led Policing in Indonesia P. 664 - 667

Amira Paripurna and Sarwirini

DOI:10.5220/0007549106640667

Challenges of State Sovereignty and the Right of State to Self-defense: The Case of Cyber Attacks	P. 668 - 671
Joel Niyobuhungiro DOI:10.5220/0007549206680671	
The Problems of License Patent Agreement in Indonesia	P. 672 - 675
Agung Sujatmiko DOI:10.5220/0007549306720675	
Do Cities Really Want Human Rights? A Socio-legal Inquiry of Governance Performance in Decentralized Indonesia	P. 676 - 679
R. Herlambang Perdana Wiratraman , Ekawestri Prajwalita Widiati and Dwi Rahayu Kristianti DOI:10.5220/0007549406760679	
Collaborative Innovation in Maternal Mortality Rate (MMR) and Neonatal Mortality Rate (NMR) Handling Program in Sidoarjo	P. 680 - 684
Nurul Jamila Hariani and Falih Suaedi DOI:10.5220/0007549506800684	
The Development of Policy Instrument in the Application of the Law Number 1 of 1974 on Marriage as the Effort to Reduce Underage Marriage	P. 685 - 688
Lutfia Nurul Hidayati and Erna Setjaningrum DOI:10.5220/0007549606850688	
Service Quality Of M-Bank Application In Sidoarjo District	P. 689 - 693
Berliana Mustika Rani , Allen Pranata Putra and Jitzhac Andrew Rafel Mandowen DOI:10.5220/0007549706890693	
Protection of Indonesian Seafarers in Overseas Employment Post Act Number 15 Year 2016	P. 694 - 697
Lina Hastuti , Dina Sunyowati , Enny Narwati and Nina Farah Adel DOI:10.5220/0007549806940697	
The Influence of Court Decision toward Overcapacity in Surabaya Detention Facility	P. 698 - 703
Suherman DOI:10.5220/0007549906980703	
The Move toward Dynamic Governance in Indonesian Public Service - Case Study of the Dynamic Capabilities of the Immigration Office Class I Surabaya Regions in Pasport Service	P. 704 - 707
Endar Heryan Pajri and Sulikah Amorowati DOI:10.5220/0007550007040707	
The Potential Development of Trade on Services by Micro Small Medium Enterprises in ASEAN	P. 708 - 711
Koesrianti Koesrianti and Tri Andjarwati DOI:10.5220/0007550107080711	
The Response of Association of Southeast Asian Nations (ASEAN) towards the Issues of Rohingya Refugees from Myanmar	P. 712 - 715
Briyantoro Eko Yudianto DOI:10.5220/0007550207120715	
Transformational Leadership in Higher Education Institutions and Employee Satisfaction Interventions	P. 721 - 724
Laily Fardillah , Budi Prasetyo and Rizca Yunique Putri DOI:10.5220/0007550307210724	
The Influence of Job Motivation and Job Environment Toward Job Satisfaction of Employee in the Resources Directorate of Universitas Airlangga	P. 725 - 731
Hendro Gunarto and Falih Suaedi	

DOI:10.5220/0007550407250731

Professionalism and Skill Based on Performance: A Case Study of Indonesia Navy P. 732 - 739

Satria Wijaya and Falih Suaedi

DOI:10.5220/0007550507320739

Comparative Study of Job Motivation Between Librarian and Administration Staff in Library of Universitas Airlangga P. 740 - 745

Falih Suaedi and Dimas Agung Trisliatanto

DOI:10.5220/0007550607400745

Perception and Feasibility Study toward Mini Vocational School under the Islamic Boarding School in East Java P. 746 - 752

Bagus Oktafian Abrianto , Dimas Agung Trisliatanto and Suparto Wijoyo

DOI:10.5220/0007550707460752

The Execution of the Collective Labour Agreement between the Labour Union and the Management of "X" Hospital P. 753 - 757

Sumarjoko and M. Hadi Subhan

DOI:10.5220/0007550807530757

The Effective Implementation Theory on Economic Development Based on Part of District Region in Indonesia - A Study of Government Developing Program in Soko Village, Glagah District, Lamongan Regenc P. 758 - 764

Noto Mashari Joyo and Philipus Keban

DOI:10.5220/0007550907580764

Community Development in CSR Programs Development of Laguna Fishing Pond Tourism P. 765 - 768

Rachmad Ilham and Budi Setiawan

DOI:10.5220/0007551007650768

Job Motivation, Quality Work of Life and Organization Citizen Behavior toward Organizational Commitment P. 769 - 773

Tiara Nurul Hidayah and Windijarto

DOI:10.5220/0007551107690773

The Values of Leadership Principles in Minangkabau Proverbs P. 774 - 781

Misnal Munir

DOI:10.5220/0007551207740781

Poverty Culture of Community in Bengawan Solo River Bank in Surakarta, Indonesia P. 782 - 785

Dita Agnes Dekasari , Ahmad Zuber and Yulius Slamet

DOI:10.5220/0007551307820785

Work Ethos and Religion Implementation in Supporting Business Existence in Metal Craftsmen in Cepogo Village of Boyolali Indonesia P. 786 - 789

Susi Ningsih , Bagus Haryono and Argyo Demartoto

DOI:10.5220/0007551407860789

Competency Development of Traits and Motives in Case of Salt Farmer in Galis, Sub-district of Pamekasan Regency P. 790 - 794

Sukron Ma'mun , Windijarto and Sutinah

DOI:10.5220/0007551507900794

The Effect of Education, Materialism, and Prestige on the Job Type Transformation at Young Generation P. 795 - 800

Bagus Haryono and Susi Ningsih

DOI:10.5220/0007551607950800

Effectiveness of the "Jalin Matra" Material in Poverty Management - A Case Study of Turi Village, Jetis District, Ponorogo Regency, East Java Province, P. 801 - 804

Indonesia

Dwi Poernomo , Suparto Wijoyo and Abd. Shomad

DOI:10.5220/0007551708010804

Arrangement and Implementation of Pekanbaru City Spatial Control

P. 805 - 809

Dio Praseto Budi

DOI:10.5220/0007551808050809

The Politics of Law in Islamic Regional Regulation to Improve Regional Economy Competitiveness

P. 810 - 814

M.Haris Hidayatulloh , Ridan Muhtadi , Moh. Nafik H. R. , Sri Herianingrum ,

Sri Iswati , Irham Zaki and Tika Widiastuti

DOI:10.5220/0007551908100814

The Influence of Perceived Organizational Support and Leader Member Exchange Against Cunter-Productive Work Behaviors on Civil Servants in Organization X

P. 815 - 819

Mochammad Zainuddin Arif , Pinky Septandari Endang Pratiwi and Dewi

Retno Suminar

DOI:10.5220/0007552008150819

The Role of Government in Handling the Street Children Problem - A Study Case in Surabaya City, Indonesia

P. 820 - 825

Bayu Prabhata Arinugraha

DOI:10.5220/0007552108200825

Freelancer's Personal Development - In the Industry of Meeting, Incentive, Convention, and Exhibition (MICE)

P. 826 - 828

Affah Rahmania , Windijarto and Dian Ekowati

DOI:10.5220/0007552208260828

Developing a Conceptual Model for Resilient Community Against Fire in a Densely Populated Settlement in Surabaya

P. 829 - 833

Retno Indro Putri , Muhammad Zainuddin and Adjie Pamungkas

DOI:10.5220/0007552308290833

Coping Strategies for the Flood Disaster Practiced by the Pekauman Community in Sidoarjo Regency

P. 834 - 838

Nurul Charisma , Hamidah and Moh. Adib

DOI:10.5220/0007552408340838

The Moderating Effect of Job Demands on Relationship Between Perceived Organizational Support and Psychological Capital to Work Engagement

P. 839 - 845

Nurina Wulan Purnami and Seger Handoyo

DOI:10.5220/0007552508390845

Single Window Policy for Trade Licensing in Surabaya

P. 846 - 848

Lanny Ramli , Luggas Radianto , Ayu Putri Azahrawany , Vidy Fauzizah Sampurno ,

Sandra Bagus M and Rintan Nur Indah Sari Anwar

DOI:10.5220/0007552608460848

Relationship of Demographic Characteristics, Elderly Posyandu Membership, Organizational Activities to Ability of Daily and Instrumental Elderly Activity

P. 849 - 852

Yuly Sulistyorini , Nunik Puspitasari and Windhu Purnomo

DOI:10.5220/0007552708490852

Implementation of Permission Use of Space as an Instrument of Controlling the Space Utilization of High Control Zone of East Java

P. 853 - 858

Festianty Karismandani , Suparto Wijoyo and Agus Sekarmadji

DOI:10.5220/0007552808530858

HIPPA - Himpunan Petani Pemakai Air (Water User Association-WUAs) and Employment Opportunities in Rural Area - Case Study of a Village in Plumpang District, Tuban Regency

P. 859 - 865

Rustinsyah Rustinsyah , Ratna Azis Prasetyo and Djoko Adi Prasetyo

DOI:10.5220/0007552908590865

Work Motivation, Job Satisfaction and it's Effect toward Organizational Commitment to Honorary Employees (Contract Employees) at PT X

P. 866 - 869

Azizah Anshori , Fendy Suhariadi and Samian

DOI:10.5220/0007553008660869

Transport Management of Hazardous Materials and Toxic Waste

P. 870 - 874

Khardian Eka Sulaksono , Suparto Wijoyo and Lilik Pudjiastuti

DOI:10.5220/0007553108700874

Intellectual Capital Model in SME's Tour and Travel in Surabaya

P. 875 - 878

Sri Iswati , Agus Widodo M. , Hendarjanto , Azizah Anshori and Dwi Swasana

DOI:10.5220/0007553208750878

Classification of Underdeveloped Regions in Indonesia Using Decision Tree Method

P. 879 - 883

Bambang Widjanarko Otok , Rusdi Hidayat , Zumarsiyah Mahsyari , Siti

Halimah Sa'diyah and Dimas Achmad Fadhila

DOI:10.5220/0007553308790883

Individualization through Observation of the Characteristic of Alveolar Bone of Edentulous Skulls

P. 884 - 887

Reinaldy Octavianus Yan Dimpudus , Eko Prastyo and Myrtati Dyah Artaria

DOI:10.5220/0007553408840887

The Development of Laku Lampah Community Existence as a Place of Historical Interested Members in Surakarta

P. 888 - 892

Afika Fitria Permatasari , RB Soemanto and Supriyadi

DOI:10.5220/0007553508880892

Global Trade War: On the Efficiency of US Steel and Non-US Steel Companies

P. 893 - 897

Yuan Ekananda Muhammad Adikara and Sri Herianingrum

DOI:10.5220/0007553608930897

Geographically Weighted Regression for Prediction of Underdeveloped Regions in East Java Province Based on Poverty Indicators

P. 898 - 907

Rusdi Hidayat N , Bambang Widjanarko Otok , Zumarsiyah Mahsyari , Siti

Halimah Sa'diyah and Dimas Achmad Fadhila

DOI:10.5220/0007553708980907

Shariah Compliance of Rahn Contract Based in Fatwa National Islamic Council- Indonesian Council of Ulama (Dsn-Mui) at Pt. Bank Pembiayaan Rakyat Syariah (Bprs) Karya Mugi Sentosa

P. 908 - 912

Annisa Aulia Yuniarti , Dina Septriani Fitriasia and Sri Herianingrum

DOI:10.5220/0007553809080912

Staffs' Organizational Commitment at Archive and Library Department of Bima District

P. 913 - 917

Nur Anilawati

DOI:10.5220/0007553909130917

Folklore as a Tool to Naturally Learn and Maintain Sasak Language as Mother Tongue

P. 918 - 926

Nuriadi

DOI:10.5220/0007554009180926

Cultural Pattern of Children with Disabilities (Difabel) - Study of Children with Special Needs (Tunagrahita) in Sekolah Luar Biasa (SLB) Biromaru

P. 927 - 930

Muh. Abduh Dwi Putra , Sulaiman Mamar and Rismawati

DOI:10.5220/0007554109270930

Four Inter-ethnic Marriages of Two Chinese – Kaili Couples and Two Arab – Kaili

P. 931 - 934

Couples - Study Hybrid Identity Moh. Kurniadi Hendry Ekodiyanto , Muh Abduh Dwi Putra , Moh. Fajar Agustian and Rosmawati DOI: 10.5220/0007554209310934	
Modeling of Poverty Rate in Indonesian Using Geographically Weighted Logistic Regression for Supporting the Sustainable Development Goals Program in 2030 Lailatus Syarifah , Putri Andriani , Nadhiyati Rizka , Retno Dwi Puspitasari and Nur Chamidah DOI: 10.5220/0007554309350938	P. 935 - 938
Modeling of School Participation Rate for Senior High School in Indonesia Using Mixed Geographically Weighted Regression Model Febrina Kusumaningati , Jefri Utomo , Maya Zach , Ayu Puspitawati and Nur Chamidah DOI: 10.5220/0007554409390943	P. 939 - 943
Application of Decision Support Systems for Selection of Radiotherapy Methods Breast Cancer Patients Rafli Filano and Boy Subirosa Sabarguna DOI: 10.5220/0007554509440950	P. 944 - 950
Intellectual Capital and Firm Performance - Evidence from Indonesia Budi Yuda Prawira and Rahmat Setiawan DOI: 10.5220/0007554609510956	P. 951 - 956
Stress Factors and Impacts Toward Wardens in Surabaya Prison Anggi Isworo , Suryanto and Khanifatul Khusna DOI: 10.5220/0007554709570960	P. 957 - 960

**RESOURCES**

Proceedings
Papers
Authors
Ontology

CONTACTS

Science and Technology
Publications, Lda
Avenida de S. Francisco Xavier, Lote
7 Cv. C,
2900-616 Setúbal, Portugal.
Phone: +351 265 520 185
Fax: +351 265 520 186
Email: info@scitepress.org

EXTERNAL LINKS

PRIMORIS
INSTICC
SCITEVENTS
CROSSREF

**PROCEEDINGS
SUBMITTED FOR
INDEXATION BY:**

dblp
Ei Compendex
SCOPUS
Semantic Scholar
Google Scholar
Microsoft Academic

Correlation between Parasite Density with TNF- α and IL-10 in Plasmodium Falciparum Infected Patients in East Sumba District, East Nusa Tenggara Province

Akhmad Mubarak¹, Heny Arwati² and Yoes Prijatna Dachlan²

¹ Department of Immunology Postgraduate School, Universitas Airlangga, Airlangga Street 4-6, Surabaya, Indonesia

² Department of Parasitology Faculty of Medicine, Universitas Airlangga, Surabaya, Indonesia

Keywords: Parasite density, Plasmodium falciparum, TNF- α , IL-10.

Abstract: Introduction: Malaria is caused by female mosquito Anopheles bite transmitting malaria parasite sporozoite stage into the human body. According to World Health Organization (WHO) due to malaria was 429,000 shows case causing malaria death, this need commitment of every country to overcome malaria. Indonesia is still a malaria endemic area and includes a country with a high risk of malaria. Population migration from malaria endemic areas to non-endemic areas of malaria is responsible for malaria transmission, especially in Papua, West Papua, Maluku, North Maluku and East Nusa Tenggara. Malaria cases in East Nusa Tenggara Province 7,05% per 1.000 opulation based on annual parasite incidence (API) and 36,039 positive. East Sumba 12,84% per 1.000 population. Methods: A descriptive cross sectional study was conducted in East Sumba district using the Logical Framework approach. Twenty two people were involved in this study with ranging age 4 to 50 years old. Parasite density was examined by counting parasites on Giemsa-stained thick smears under light microscope. Plasma level of TNF- α and Interleukin-10 were measured by using enzyme linked immunosorbent assay (ELISA) Result: Significant values considered at $p < 0.05$ The result show that parasite density $7.72 \pm 9.51/\mu\text{l}$. TNF- α $27.14 \pm 50.22\text{pg/ml}$ IL-10 $2.20 \pm 3.23\text{pg/ml}$ Conclusion: The result from this study conclude parasitedensity increases of TNF- α and IL-10 cytokine.

1 INTRODUCTION

Malaria one of deadly tropical parasite disease caused by the genus Plasmodium, transmitted by the female Anopheles bites they transmitted parasite into the human (Mota et al, 2017). Data in 2015 people death case cause malaria 429.000, need commitment every country to against malaria (WHO, 2016). Indonesia one of country with a high risk of malaria endemic areas especially in Papua, West Papua, Maluku, North Maluku and East Nusa Tenggara. East Sumba district part of East Nusa Tenggara with high risk of malaria (Kemenkes, 2016).

Glycosylphosphatidylinositol (GPI) is malaria toxin that released along with merozoit and hemozoin when P. falciparum schizont-infected erythrocytes rupture causing severe malaria pathology through stimulation of pro-inflammatory responses from NK cells and macrophages as immune cells during innate immunity. Immune

response induced by GPI is mediated by pattern recognition receptors such as TLR2 and TLR42 (Dunst et al, 2017). Intraerythrocytic malaria parasite antigens trigger the early immune response and cytokines production such as TNF- α , IL-1 and IFN- γ from macrophages (Mana et al, 19910). The interleukin-10 (IL-10) is an anti-inflammatory cytokine produced by monocyte/lymphocyte which has been shown to inhibit TNF- α (Burdin et al, 1994) protects against severe malaria anemia (SMA) and cerebral malaria (Terazzaset al 2017).

IL-10 cytokines are found in plasma, produced by monocytes, Th2 cells cyteand B cells, inhibiting cytokine production in Th1 and CD8 + cells. IL-10 anti-inflammatory cytokine protects against severe malaria anemia (SMA) with cerebral malaria (Terazzaset al 2017).

During inflammation production of TNF- α is increased. The dual of cytokines especially TNF- α and IL-10 in the right level play role in protection and healing (Irawati et al, 2008).

In this study, parasite density, plasma level of TNF- α and IL-10 of *P. falciparum*-infected patient and residents in East Sumba District of East Nusa Tenggara Province were measured to find out the correlation between parasite density and both cytokines to determine the immune status of the patients.

2 MATERIAL AND METHODS

2.1 Location and Samples Collection

This research was done in East Sumba district of the East Nusa Tenggara Province. This district that located in tropical region has rainy season during January-April and the rest was dry season, causing this region classified as dry area (BPS Sumba Timur, 2016).

Blood were collected from *P.falciparum*-infected patients who seeked medication in Lindimara Hospital and Public Health Service (Puskemas), and from malaria-suspected residents who were developing fever during samples collection. Only *P.falciparum*-infected blood were used in this study. Three milli liters (mL) of blood were collected from median cubital vein and transferred to the heparin-containing tube, furthermore, plasma were used to measured the cytokines levels.

2.2 Microscopy Diagnosis and Determination of Parasite Density

Microcopy examination was done on Giemsa-stained thick and thin blood film using light microscop under 1000x magnification with oil immersion to detect and identify the species of *P.falciparum*. Parasite density were counted per 500 leukocyte based on the following formula:

$$Parasite\ Density = \frac{\sum Parasite \times 8000}{500} \quad (1)$$

Blood drops on the surface glass object, flattened using the other glass object, thin blood smear attach the glass object with a 45 degree in the blood, push blood until tip on ovale, thick and thin blood fixation with metil alcohol dried and then staining used giemsa.

2.3 Procedure of Giemsa Staining

The dried blood preparation fixation with methanol, glass objects are placed on the stain rack, prepared giemsa solution by mixing 3 cc giemsa stock and 97

cc buffer solution, poured 3% giemsa solution to cover the surface of the glass object, leave on for 30 – 45minute, poured clean water slowly on the glass object until clean, dried and than staining used giemsa.

2.4 Enzyme-Linked Immunosorbent Assay (ELISA)

Plasma levels of TNF- α and IL-10 were measured by using ELISA according to the manufacturer's protocol (Elabscience, USA), with all samples running in a single assay. The ELISA was performed and analysed by a single operator, and standard curves were derived from cytokine standards. Optical density (OD) value were measured at 450 nm immediately.

Add 100 μ L sample of standard or plasma to each well. Incubate for 90 minutes, remove the liquid. Add 100 μ L of biotinylated detection antibody (Ab). Incubate for one hour at 37 degree, aspirate and wash for three times, add 100 μ L of HRP conjugate. Incubate for 30 minutes at 37 degree, aspirate and wash for 5 times, add 90 μ L of substrate reagent. Incubate for 15 minutes at 37 degree, add 50 μ L of stop solution. Determine the optical density (OD) value at 450 nm immediately.

2.5 Statistical Analysis

All the statistical analyses were done using statistical package for social science (SPSS). The normality data was determine by Kolmogorov Smirnov test with $p > 0,05$. Further analysis was using Pearson correlation test to determine the correlation between parasite density, TNF- α , IL-10 and the ratio of both cytokines.

3 COPYRIGHT FORM

3.1 Microscopy Diagnosis of *P. falciparum* Infection

Microcopy examination was done on Giemsa-stained thick and thin blood film using light microscop under 1000x magnification with oil immersion to detect and identify the species of *P.falciparum*. Parasite density were counted per 500 leucocyte based on the following formula:

$$Parasite\ Density = \frac{\sum Parasite \times 8000}{500} \quad (2)$$

Microscopy diagnosis of Giemsa-stained thin films resulting in 22 out of 46 samples were positive infected with *P. falciparum*, 19 *P. vivax* and 5 mix of both species. Only *P. falciparum* positive samples were used in this study.

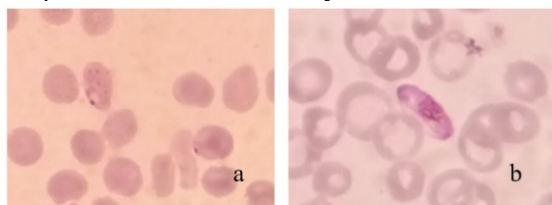


Figure 1: Ringform (a) and gametocyte (b) stages of *P. falciparum* on Giemsa-thin blood film

3.2 Characteristics of Subjects

The results of the characteristics subjects are presented in Table 1. Mean age of malaria positive group *P.falciparum* 16,64 years and negative group 24,10 years. Percentage of gender malaria positive group 50% male, 50% female and malaria negative group 30% male, 70% female.

Table 1: Characteristics of subjects

	Total (%) Positive group <i>P.falciparum</i> (n = 22)	Total (%) Negative group <i>P.falciparum</i> (n = 10)
Number of the subject		
Age (Year), Mean ±SD	16,64 ±10,67	24,10 ± 5,74
Male	11(50,0)	3(30,0)
Female	11(50,0)	7(70,0)

3.3 Parasite Density

The calculation of parasite density *P.falciparum* are presented in Figure 2 below.

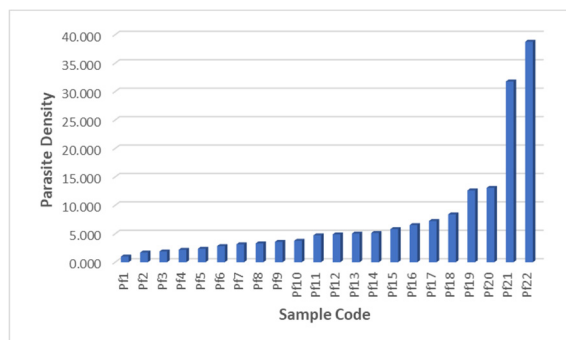


Figure 2: Parasite density in subject infected with *P.falciparum*

The highest parasite density was 38,768 parasites/ μ L while the lowest was 1,008 parasites/ μ L.

3.4 Plasma level of TNF- α

The results of measurements of TNF- α levels are shown in Figure 3 below.

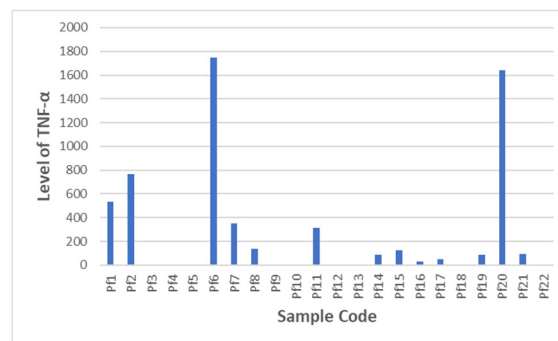


Figure 3: Plasma level of TNF- α in *P. falciparum*-infected subjects

The highest levels of TNF- α were found in Pf6 1750.94 pg / mL and Pf20 1641.59 pg / mL samples. The lowest TNF- α levels Pf3, Pf4, Pf5, Pf9, Pf10, Pf12, Pf13, Pf18, Pf22 were below the standard absorbance values of the ELISA measurement.

3.5 Plasma Level of IL-10

The plasma level of IL-10 by ELISA is shown in Figure 4.

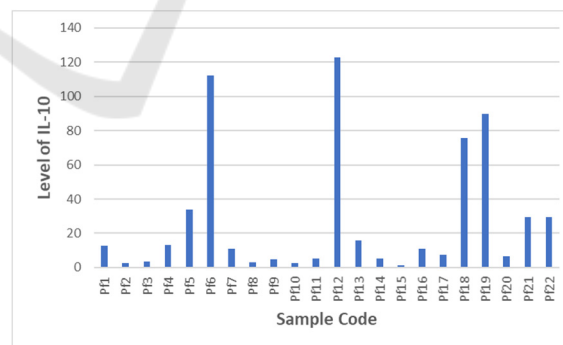


Figure 4: Plasma level of IL-10 levels in *P. falciparum*-infected subjects

The highest levels of IL-10 were found in samples of Pf6 with 112.04 pg / mL and Pf12 with 122.76 pg / mL. The lowest level of IL-10 were Pf2 with 2.52 pg / mL, Pf10 with 2.40 pg / mL and Pf15 with 1.05 pg / mL.

The levels of parasite density, TNF- α and IL-10 vary widely, therefore, to explain the correlation between parasite density and the levels of TNF- α and IL-10, the discussion is grouped into 3 groups and picked up several samples as follows:

1. Samples with high parasite density. 2. Samples with high TNF- α level or high ratio of TNF- α : IL-10, and 3. Samples with high IL-10 levels or low TNF- α : IL-10 ratio.

Table 2: Grouping of representative samples with high parasite densities, high TNF- α and high IL-10 levels

Samples with high parasite density				
Code	Parasite density	TNF- α	IL-10	Ratio
Pf22	38.768	0	29,292	0
Pf21	31.776	96,251	29,292	3,2
Pf20	13.072	1.641,5	6,531	251
Pf19	12.624	85,0	89,7	0,9
Samples with high level of TNF- α				
Code	Parasite density	TNF- α	IL-10	Ratio
Pf1	1.008	531.227	12.822	41.43
Pf2	1.712	767.29	2.526	303.7
Pf6	2.848	1750.948	112.041	15.62
Samples with high level of IL-10				
Code	Parasite density	TNF- α	IL-10	Ratio
Pf5	2.368	0	33.739	0
Pf12	4.896	0	122.764	0
Pf18	8.408	0	75.506	0

	Low
	Moderate
	High

4 DISCUSSION

The higher levels of parasite density were observed in uncomplicated P.falciparum infection compared to the severe malaria infection. In the present study high parasite density was followed by high TNF- α and IL-10 levels. Activation of Th1 and Th2 balance for parasite killing (Irawati, 2008). Several studies have shown the involvement of pro-inflammatory cytokine in patogenesis of severe falciparum malaria where high plasma TNF- α and IL-10 show cerebral malaria (CM) and severe malaria anemia (SMA) (Parera, et al 2013)

Several studies indicated TNF- α is a critical mediators of malarial fever P.falciparum. TNF- α released in intermittent burst with the schizont

rupture. Not all proinflammatory cytokines are equally relevant for the development of cerebral malaria (Angulo, 2002). Cytokines play an important role in human immune responses to malarial disease. Balance between pro and anti inflammatory cytokine are differ in each stage of Plasmodium infection (Andrade, 2010).

4.1 Samples with High Parasite Density

There are 4 samples categorized as having high parasite densities (> 10,000/ μ l blood) with different levels of TNF- α and IL-10 as listed in the Table 2.

■ Subject Pf21

This subject with high parasite density has low TNF- α and IL-10 levels, make the ratio of TNF- α : IL-10 also low (0). The low anti-inflammatory response managed the host immunity to suppress the levels of proinflammatory cytokine (TNF- α) to the level below standard (0). Possibility in defecting or mutations in TNF- α encoding gene has occurred that can result in polymorphisms of the gene (Qidwai and Khan, 2011).

■ Subject Pf20

This subject has high parasite density with high TNF- α levels but moderate IL-10 level, thus the ratio of TNF- α : IL-10 is high. The blood sample was collected at the Baing Health Center when the subject was seeking medication due to suffering from fever. Microscopy diagnosis has confirmed the positive infection of P. falciparum. The immune response of patient is indicated by high levels of TNF- α . Fever is a clinical manifestation of the TNF- α response. Fever and TNF- α maintain parasitic density within safe limits. Such immunity explains a host defense mechanism that depends on parasite density (Kwiatkowski 1989; 1991; 1994). TNF- α has several other biological effects, such as the deployment of neutrophils and monocytes to the site of infection and activating these cells to exclude pathogens, stimulating the expression of vascular endothelial cell adhesion molecules for leukocytes, stimulating macrophages to secrete chemokines and inducing chemotactic and leukocyte deployment, stimulating the hypothalamus inducing fever (Bratawidjaja, 2014). High parasitic density induces TNF- α production very strongly. The excessive level of

TNF- α indicate that parasites escape the immune mechanism. The host fights infection by producing anti-inflammatory cytokines, IL-10, but is unable to kill parasites mimicking the immunotolerance against pathogen. These conditions can lead to splenomegaly and hepatomegaly and maybe specific in East Sumba Regency.

- Subject Pf19

The host responds to infection by producing high level of IL-10 to suppress TNF- α production, however, IL-10 produced by Th2 cells is unable to help B cells to produce anti-parasitic antibodies that are strong enough to eliminate parasites, so parasites continue to increase. A research conducted by Shabani et al (2017) described that density of *P. falciparum* which >10,000 parasites μ l of blood can cause Cerebral Malaria (CM) and Severe Malaria Anemia (SMA). In anemia, the parasite density increases (Maina et al, 2010). *P. falciparum* infects old erythrocytes. When erythrocytes infected with schizont stage rupture release merozoites to invade other erythrocytes, thus the more erythrocytes infected by the schizont result in reducing the number of erythrocytes. On the other hand, the production of new erythrocytes is not as fast as the invasion of parasites. Parasitic density is related to age, and clinical malaria such as fever, chills, headache and splenomegaly are associated with parasite density (Pryblyski et al, 1999). Peripheral parasitic density is also associated with plasma TNF- α level in pregnant women (Ifeanyichukwu et al, 2017).

4.2 Samples with High TNF- α Level

- Subject Pf code 1

This subject has low parasite density, high TNF- α levels and moderate IL-10 levels, thus the ratio of TNF- α :IL-10 is moderate. High TNF- α level plays a role in parasite killing mechanism, because TNF- α levels can inhibit parasite growth (Kwiatkowski, 1991), causing low parasitic density. Moderate levels of IL-10 indicate the host responds against infection to balance the TNF- α . Subject Pf2 has similar immune status to Pf 1.

- Subject Pf6

This subject has low parasite density, but high level of TNF- α and IL-10 and moderate

ratio of both cytokines. This situation shows that the host is fighting infection by producing IL-10 to compensate for TNF- α production. Parasite killing mechanism has also occurred. The presence of an anti-inflammatory response indicates a tendency for patients to recover from malaria infection.

4.3 Sample Group with High IL-10 Level

Subjects Pf5, Pf12 and Pf18 had defective TNF- α coding genes (Qidwai and Khan, 2011), causing very low TNF- α levels and unreadable by the system on measurements with the ELISA method. High respond of IL-10 indicates a strong fight against infection followed by a decrease in parasite density, thus indicates healing is very likely.

5 CONCLUSIONS

In summary, proinflammatory cytokine and anti-inflammatory cytokine are both required for adequate protection, Th-1 cytokine are important in controlling early parasite malaria, although they need to be counterbalanced later in the infection by a Th-2 response which leads to antibody production.

REFERENCES

- Angulo, I and Fresno, M. 2002. Cytokine in The Pathogenesis of and Protection against Malaria. *Clinical and Diagnostic Laboratory Immunology*. American Society for Microbiology. Vol.9, No.6
- Badan Pusat Statistik. 2017. Sumba Timur Dalam Angka.
- Dachlan, Yoes Prijatna. 2013. *Imunologi Malaria :Sistem Imun Innate dan Adaptive pada Malaria*. Rumah Sakit Penyakit Tropik Infeksi. Univerersitas Airlangga. Surabaya.
- Harijanto, P.N. Nugroho, Agung. Gunawan, Carta A. 2012. *Malaria dari Molekul ke Klinis*. Edisi 2. Penerbit Buku Kedokteran EGC. Jakarta.
- Irawati, L. Acang, Nusirwan. Irawati, Nuzulia. 2008. *Ekspresi Tumor Necrosis Factor -Alfa (TNF- α) dan Interleukin 10 (IL-10) pada Infeksi Falciprum*. *Majalah Kedokteran Andalas* No.1 Vol.32
- Mota, M. Rodriguez, Ana. 2017. *Malaria Immune Response to Infection and Vaccination*. Springer International Publishing. Switzerland.
- White, Nicholas J. Sasithon Pukritakamee, Tran Tinh Hien, M Abul Faiz, Olugbenga A Mokuolu, Anjen M Dondorp. 2014. *Lancet Journal*. Malaria. Vol.383 February 22.

- Terrazas, Cesar, James C Stock, Jennifer Kimble, Ellen Morreti, Sanjay Varikuti and Abhay R. Satoskar. 2017. The Role of MIF in Parasitic Infections. USA.
- World Health Organization (WHO). 2016. World Malaria Report. Geneva. Switzerland
- Parera M.K, Herath N.P, Pathirana L, Phone Kyaw M, Alles H.K, Mendis K.N, Premawansa S, Handunnetti S.M. 2013. Association of high plasma TNF-alpha levels and TNF-alpha/IL-10 ratios with TNF2 allele in severe P.falciparum malaria patients in Sri Lanka. Phatogen and global health. Vol.107. No.1

