

**ASIAN JOURNAL OF
WATER,
ENVIRONMENT
AND POLLUTION**

CP

CAPITAL PUBLISHING COMPANY

Aims & Scope

Asia, as a whole region, faces severe stress on water availability, primarily due to high population density. Many regions of the continent face severe problems of water pollution on local as well as regional scale and these have to be tackled with a pan-Asian approach. However, the available literature on the subject is generally based on research done in Europe and North America. Therefore, there is an urgent and strong need for an Asian journal with its focus on the region and wherein the region specific problems are addressed in an intelligent manner.

In Asia, besides water, there are several other issues related to environment, such as; global warming and its impact; intense land/use and shifting pattern of agriculture; issues related to fertilizer applications and pesticide residues in soil and water; and solid and liquid waste management particularly in industrial and urban areas. Asia is also a region with intense mining activities whereby serious environmental problems related to land/use, loss of top soil, water pollution and acid mine drainage are faced by various communities.

Essentially, Asians are confronted with environmental problems on many fronts. Many pressing issues in the region interlink various aspects of environmental problems faced by population in this densely habited region in the world. Pollution is one such serious issue for many countries since there are many transnational water bodies that spread the pollutants across the entire region. Water, environment and pollution together constitute a three axial problem that all concerned people in the region would like to focus on.

Editorial Board

Editor-in-Chief

Prof. V. Subramanian
Jawaharlal Nehru University, Environmental Science
Delhi
India
Email: ajwep@capital-publishing.com

Editorial Board

Prof. D. Datt
Khulna University, Khulna
Bangladesh

Prof. R.V. Grieken
University of Antwerp, Antwerp
Belgium

Dr. L. Gupta
Institute for Marine Exploration and Engineering, JAMSTEC, Yokosuka
Japan

Prof. M. Haigh
Oxford Brookes University, Oxford
United Kingdom

Prof. V. Ittekkot
Center for Tropical Marine Ecology, Bremen
Germany

Prof. J. Krecek
Czech Technical University, Prague
Czech Republic

Prof. R. Ramesh
National Centre for Sustainable Coastal Zone Management, Anna University, Chennai
India

Prof. J. Zhang
East China Normal University, Shanghai
China

The Feasibility of Algae Treatment Treating Fecal Sludge Wastewater at Surabaya, Indonesia

Cite

Authors: Farahdiba, Aulia Ulfah | Hidayah, Euis Nurul | Zara, Djuni Wulan | Linh, Nguyen Thi Thuy

Article Type: Research Article


Abstract: This research work was preliminary, carried out to determine the performance of algae in the fecal sludge wastewater treatment. This study was conducted with a batch scale, using an algae reactor to treat fecal wastewater with high organic and nutrient contents. Cultured algae using *Chlorella* sp. was spiked in domestic wastewater with five days detention period. Environment conditions such as pH, dissolved oxygen, light and temperature were monitored. It was seen that light intensities directly could affect the temperature of the bioreactor. The algae reactor was able to remove 20-50% of COD, 30-40% of nitrate and 50% of phosphate. ... [Show more](#)

Keywords: Algae, domestic wastewater, nutrient, organic substance

DOI: 10.3233/AJW200027

Citation: Asian Journal of Water, Environment and Pollution, vol. 17, no. 3, pp. 1-6, 2020

Price: EUR 27.50

 Add to cart

Effect of Salinity on Osmoregulation and Histopathology in Gills of Tilapia (*Oreochromis niloticus*)

Cite

Authors: Handayani, Kiki Syaputri | Soegianto, Agoes | Chang, Ching-Fong

Article Type: Research Article


Abstract: Experiments on Nile tilapia *Oreochromis niloticus* were conducted to assess serum osmolalities, ions and histopathological effects induced in gill tissues of 7 days exposure to different salinities (0, 10, 15 and 20 ppt). These tissues were investigated by light microscope. Blood serum osmolality (SO), sodium (Na⁺), chloride (Cl⁻) and potassium (K⁺) concentrations were assessed after 7 days of exposure. Serum osmolality and ionic content of exposed fish appeared differently affected by salinity throughout 7 days compared to the controls. Osmolality and Na⁺ were increased at the two tested salinities (15 and 20 ppt), Cl⁻ ... [Show more](#)

Keywords: Tilapia, salinity, freshwater, osmolality, ions, immunohistochemistry

DOI: 10.3233/AJW200028

Citation: Asian Journal of Water, Environment and Pollution, vol. 17, no. 3, pp. 7-11, 2020

Price: EUR 27.50

 Add to cart

□ Evaluation of Radioactivity in Surabaya Coastal Estuary Ecosystem with Spectrometry α , β , γ

Cite

Authors: Siswanto, | Taftazani, Agus | Prasetyo, Dedy

Article Type: Research Article


Abstract: Radioactivity levels have been measured in sediment samples, *Echornia crassipes* and *Anadara granosa* at the Surabaya river estuary. Measurement data were obtained by spectrophotometric method, which is a way of measuring and identifying radionuclides through observations of the spectrum emitted with detector material. The results of measurements and calculations that have been done show that the mean concentration of activity α , β , γ (gross) in water in the Morokrempangan estuary and Kenjeran river estuary is still below the threshold value of group C waters quality. Radionuclide identification results indicate the presence of natural radionuclides K 40, Tl ... [Show more](#)

Keywords: Radioactivity, water quality, spectrophotometry α , β , γ

DOI: 10.3233/AJW200030

Citation: *Asian Journal of Water, Environment and Pollution*, vol. 17, no. 3, pp. 19-23, 2020

Price: EUR 27.50

 Add to cart

□ Effect of Water Quality on Community Structure of Bivalve at Segoro Tambak Estuary, Sidoarjo, East Java, Indonesia

Cite

Authors: Hutami, Widya Wahyu | Sari, Luthfiana Aprilianita | Masithah, Endang Dewi | Sahidu, Adriana Monica | Pursetyo, Kustiawan Tri

Article Type: Research Article


Abstract: Identification of water quality is an important factor because water supports the community structure of an organism. Bivalves are one of bioindicators in aquatic ecosystems in Segoro Tambak Estuary, which receive wastewater from landfill waste disposal. The bivalve community structure needs to be evaluated because the environmental changes that occur in waters can lead to structural changes of the bivalve community. The sampling was conducted in January – March, 2018. The water quality and environmental parameters observed were dissolved oxygen (DO), biochemical oxygen demand (BOD), temperature, salinity, current speed and wind speed. The bivalve community structure can be seen from ... [Show more](#)

Keywords: Water quality, community structure, bivalve, East Java

DOI: 10.3233/AJW200041

Citation: *Asian Journal of Water, Environment and Pollution*, vol. 17, no. 3, pp. 81-86, 2020

Price: EUR 27.50

 Add to cart

Effect of Water Quality on Community Structure of Bivalve at Segoro Tambak Estuary, Sidoarjo, East Java, Indonesia

Widya Wahyu Hutami, Luthfiana Aprilianita Sari¹, Endang Dewi Masithah²,
Adriana Monica Sahidu² and Kustiawan Tri Pursetyo^{2*}

Aquaculture Study Program, Faculty of Fisheries and Marine Universitas Airlangga, Surabaya, Indonesia

¹Department of Fish Health Management and Aquaculture, Faculty of Fisheries and Marine
Universitas Airlangga, Surabaya, Indonesia

²Department of Marine, Faculty of Fisheries and Marine Universitas Airlangga, Surabaya, Indonesia

✉ kustiawan@fpm.unair.ac.id

Received February 2, 2020; revised and accepted June 5, 2020

Abstract: Identification of water quality is an important factor because water supports the community structure of an organism. Bivalves are one of bioindicators in aquatic ecosystems in Segoro Tambak Estuary, which receive wastewater from landfill waste disposal. The bivalve community structure needs to be evaluated because the environmental changes that occur in waters can lead to structural changes of the bivalve community. The sampling was conducted in January – March, 2018. The water quality and environmental parameters observed were dissolved oxygen (DO), biochemical oxygen demand (BOD), temperature, salinity, current speed and wind speed. The bivalve community structure can be seen from the composition, diversity (H'), evenness (E) and dominance (C). The results showed that the water quality of Segoro Tambak Estuary was in accordance with the standard of quality of life of marine biota, temperature 28-30.6°C, DO 5.6-5.9 ppm, salinity 29-36 ppt, BOD 44.80 with current speed 0.68-1.81 cm/s and wind speed 2.12-3.72 knots. The dominant bivalve species found in the waters of Segoro Tambak Estuary were *Anadara granosa*, *Anadara inequivalvis*, *Anadara gubernaculum*, *Paphia undulata* and *Macra* sp. The lowest diversity value was observed in January (0.61) and the highest was observed in March (1.38). The highest evenness value observed in March (0.86) and the lowest in January (0.56). The lowest dominance value was seen in February (0.28) and the highest value in January (0.68).

Key words: Water quality, community structure, bivalve, East Java.

Introduction

Sidoarjo Regency is a developing region that has progressed quite rapidly (Ayunita, 2014; Moko and Wiweka, 2012), with the potential of industry, tourism, trading and small or medium enterprises. The direct impact was waste generated from industrial and household activities. Liquid waste generated by industry exits in the flowing river and affect estuary

waters (Harlyan and Sari, 2015; Rahardja et al., 2013; Sari et al., 2018). One of the estuaries that received the impact is Segoro Tambak Estuary, which is located at the coastal area of Sedati Subdistrict, Sidoarjo Regency (Sari et al., 2019).

The impact of waste leads to water pollution that disrupts the ecological system. Bivalves are organisms that can be used as a bioindicator in aquatic ecosystems (Macintosh et al., 2002). Bivalves or shellfish can

*Corresponding Author

be found in estuary because they have a sedentary lifestyle and have the ability to respond to the water conditions at individual, as well as community level (Dewi et al., 2018; Liyana et al., 2018; Pursetyo et al., 2015). The higher the level of water pollution, the lower is the abundance of bivalves. However, if the level of pollution in waters is low, then the abundance of bivalves in waters will increase (Riniatsih and Kushartono, 2009).

The previous research work on bivalves in Sedati water area has been carried out by Zakaria (2017) who discusses the relationship of body length and condition factors of saltwater bivalves (*Anadara* sp.). However, no research has been conducted on bivalve community structures in Sedati waters. Hence, research on bivalve community structure needs to be done, because the changes of environmental parameters that occur in waters can cause shifting structure of the bivalve community (McKeon et al., 2015).

The study is beneficial as it provides information to the public about effect of water quality on bivalve community structure at Segoro Tambak Estuary, Sedati, Sidoarjo, East Java, Indonesia. This is a basic knowledge and source of information regarding the connection of environmental habitat and bivalves.

Materials and Methods

The research method used in this research is a survey method with the determination of the station, which is carried out using purposive sampling technique. Determination of the sampling point is carried out using stratified random sampling or layered random sampling, which is a sampling conducted from the coast to the sea.

Determination of Sampling Locations

The location of the observation was determined based on the representation of the research area, which is Segoro Tambak Estuary, Sedati, Sidoarjo. This location is a fishing area that has bivalve resource potential. Sampling was carried out at three points with five replications for each point. Sampling was conducted every month, from January to March, 2018. Determination of the location

Table 1: The coordinates of the sampling location

Location		Coordinate point	
		Longitude	Latitude
Segoro	1.5 km	07° 20.361'	112° 51.336'
Tambak	1.75 km	07° 20.360'	112° 51.468'
	2 km	07° 20.369'	112° 51.633'

point of study was carried out using Global Positioning System (GPS) and preliminary research was carried out to determine the coordinates and find out the activity at the research location.

Water and Substrate Sampling

Substrate sample from the bottom of water were taken using Ekman Grab at each point. Sediment samples were put in zip lock plastic that has been labeled with names (station names, point and repetition of retrieval), then stored in ice cooler box and transported to laboratory for further observation. Observation of fractions and substrate type was carried out in Soil Mechanics Laboratory of Civil Engineering Faculty of Engineering and Planning of Institut Teknologi Sepuluh November Surabaya. The organic matter contents of the samples were analysed in the Nutrition and Food Laboratory of Public Health Faculty, Universitas Airlangga Surabaya.

Bivalves Sampling

Bivalvia samples were collected using a specialised fishing gear (local name: garits). Then the samples were stored in a cooler box and transported to the Laboratory of Anatomy and Aquaculture of Faculty of Fisheries and Marine Universitas Airlangga Surabaya for further analysis.

Composition

The composition of bivalves at Segoro Tambak Estuary, East Java was identified by referring to Tunnell (2010), Gosling (2003), Abbott and Dance (1998), Palomares and Pauly (2018), website was made about marine life and previous research regarding the identification of bivalves in the coastal waters of Sidoarjo (Ambarwati and Trijoko, 2011).

Diversity Index (H')

Diversity index (H') is a mathematical measure that describes the diversity of species in a given community (Taqwa, 2010). Species diversity was calculated using the Shannon-Wiener diversity index formula (Krebs, 1989).

Evenness Index (E)

Evenness is an individual composition of each species which is found in the community (Krebs, 1989).

Dominance Index (C)

Dominance index is mathematical measure of each species value in relation with community as a whole (Krebs, 1989).

Results and Discussion

Water Quality Conditions in Segoro Tambak Estuary

Environmental parameters of Segoro Tambak estuary are presented in Figures 1 to 4, and important values of bivalve community are presented in Figure 5. Observations taken in January showed a lower value of diversity and evenness compared to dominance values (Figure 5). The existence of a certain type of dominance in the sampling location has been recorded. The low diversity index in January can be caused by the low BOD in the waters. The BOD value indicates the content of organic matter in waters (Dewi et al., 2017). Organic matter that settles at the bottom of the water is a source of food for macrozoobenthos organisms in the form of 88% mud (Putri et al., 2016). Bivalves prefer habitats with sandy substrate bases to muddy sediments on the bottom surface of the substrate; this is related to biota's behaviour either to get food with filter feeders or to dig holes to avoid predators (Hasan et al., 2017).

Observations in February and March showed higher values of diversity and evenness compared to dominance values (Figure 5). These results indicate that the number

of individuals in each type is relatively same and there are no certain types of individuals who dominate. In addition, it also shows that the environmental conditions are suitable for bivalve life. Diversity index describes the ecological balance in a community, the higher the value of diversity, the better the quality of the environment and the bivalve life (Akhrianti et al., 2014).

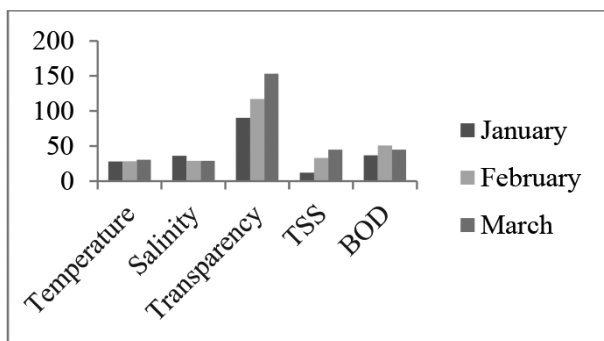


Figure 1: Temperature, salinity, transparency, TSS and BOD of Segoro Tambak Estuary.

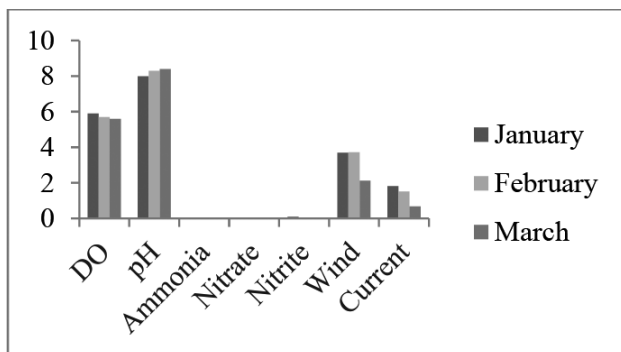


Figure 2: DO, pH, Nitrate, Nitrite, wind current of Segoro Tambak Estuary.

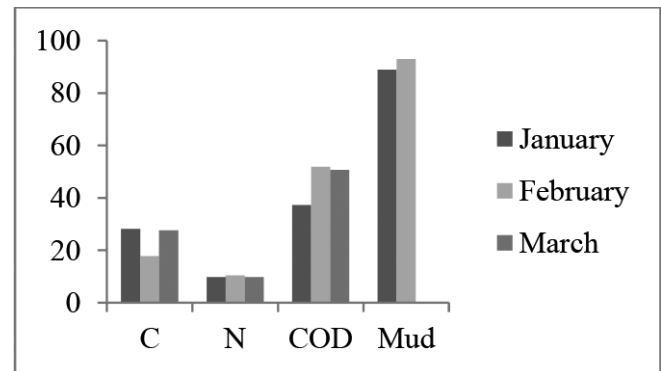


Figure 3: Substrate of the bottom of Segoro Tambak Estuary (carbon, nitrogen total, COD and Mud).

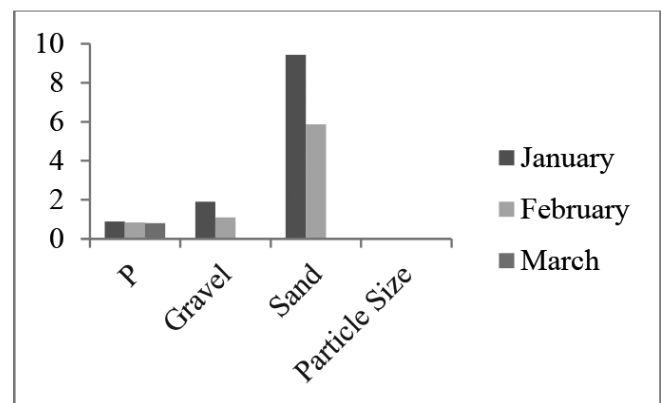


Figure 4: Substrate of the bottom of Segoro Tambak Estuary (phosfor, gravel, sand and particle size).

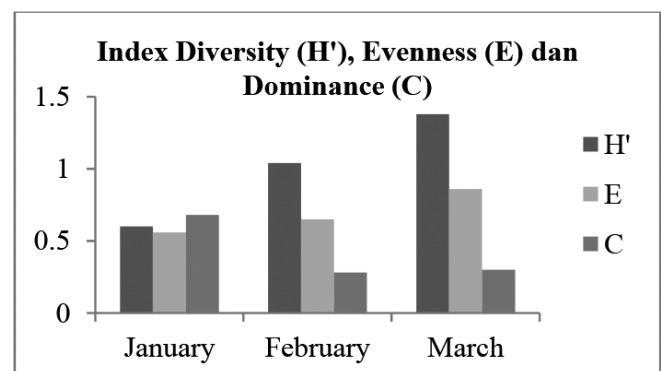


Figure 5: Diversity Index (H'), Evenness (E) dan Dominance (C) Bivalvia in Segoro Tambak Estuary from January to March 2018.

Overall, water conditions such as temperature, DO, pH and salinity in the Segoro Tambak Estuary from January to March are still at tolerance values for bivalve life and in accordance with the standard of living quality of marine biota according to standard of Indonesian ministry of environment.

The temperatures ranged from 28 to 30.6°C, which was suitable for bivalve growth and comparavity to the results by Broom (1985) that is 25-32.5°C. The DOs ranged from 5.6 to 5.9 ppm which was suitable for marine biota life, that is, > 5 ppm (Minister of Environment Decree, 1998). Water pH ranges from 8 to 8.4 which is reported to be suitable for marine biota life (Minister of Environment Decree, 1998). Water salinity at the time of the study ranged from 29 to 36 ppt, reported tolerable to bivalve life, which is comparative to 26-35 ppt (Broom, 1985).

The impact of winds and currents in these waters caused an increase in the diversity index from January to March. In January, wind speeds and currents were higher than in February and March. The current speed reached 1.84 cm/s in January while in March, the current speed was lower at 0.68 cm/s. This result is in accordance with Andri et al. (2012), who reported that macrozoobenthos prefer calm-flowing waters and have inherent properties or relatively mobile life, which means an increase in current speed will reduce macrozoobenthic diversity in the waters another factor being fishing activities. Excessive fishing contributes to the decrease in bivalvia in the intertidal zone (Novoa et al., 2016). The total fishing of shells in Sedati waters, Sidoarjo has reached 1,553,772 kg and it was categorized as overfishing according to WWF (2017).

Bivalve or shellfish includes phylum Mollusca because they are triploblastic and the body is soft (Subekti et al., 2015). Phylum Mollusca are referred as bivalve because it has two valves (Gosling, 2003). The differences in the character of bivalves that can be used as a reference for identification are the gill structure, type of life, shell morphology, hinge and ligament growth, shell texture, size and shape of the pallial line (Tunnell, 2010). There are two orders found which are Arachnid and Veneridae. According to Breiter-Hahn et al. (1984) members of the Arcoida order are species that have different plates and hinges showing different structures, which is flat and irregular lamella structures. There are three orders, specifically, Arcidae, Veneridae and Mactridae. According to Ambarwati and Trijoko (2011), most members of Arcidae live in intertidal zone and shallow waters and the Anadara genus are shallow

diggers on mud and sand substrate. Veneridae are large, flattened like axes and have “heel” which is mainly used for digging, it also has a deep pallial groove, little shell ornaments and the shell is smooth (Ambarwati and Trijoko, 2010). Mactridae is known as the Atlantic surf clam family, which lives in the bottom on sand and mud (Ambarwati and Trijoko, 2015).

A. granosa, *A. inequivalvis* and *Paphia undulata* belong to the *Arcidae* family with the highest presence at Segoro Tambak Estuary. *A. granosa* and *A. inaequivalvis* are included in *Arcidae* family. The *Arcidae* family has a cosmopolitan nature and is spread in tropical and subtropical waters, Riniatsih and Widianingsih (2007). In addition, Lindawaty et al. (2016) also states that *Anadara* sp. is one of the bivalve class biota that lives in the sea, especially in the littoral zone, partly in tidal and fresh water areas, and it is also found in the bottom of sandy and muddy waters. The value of bivalvia evenness during the study ranged from 0.61 to 1.38. The highest value evenness at Segoro Tambak Estuary at that time of the study was in March (0.86). Meanwhile, the lowest value was in January (0.56). The low value of evenness shows that the number of species that live in the area is small. The high or low value of species evenness can be caused by several things, such as the number or type of individual, the dominance of certain types and the substrate of the bottom waters, which is the habitat of bivalves (Irawan, 2008).

Conclusion

The results showed that the quality of water in Segoro Tambak Estuary is in accordance with the standard of quality of life of marine biota, temperature 28-30.6°C, dissolved oxygen (DO) 5.6-5.9 ppm, salinity 29-36 ppt, BOD 44.80 with current speed 0.68-1.81 cm/s and wind speed 2.12-3.72 knots. The dominant bivalve species found in the waters of Segoro Tambak Estuary were *Anadara granosa*, *Anadara inequivalvis*, *Anadara gubernaculum*, *Paphia undulata* and *Mactra* sp. The lowest diversity value was in January, which was 0.61 and the highest was in March at 1.38. The highest evenness value in March was 0.86 and the lowest was in January at 0.56. The lowest dominance value in February was 0.28 and the January high was 0.68.

Acknowledgements

The authors gratefully acknowledge the financial support from the Annual Budget of the Faculty of Fisheries as well as the instrument support.

References

- Abbott, R. and S.P. Dance (1998). *Compendium of Seashells*. Odyssey Publishing. California. USA. pp. 9-10.
- Ambarwati, R. dan Trijoko (2010). Morfologi Fungsional Kerang Batik *Paphia undulata* (Bivalvia: Veneridae). *Berkalah Penelitian Hayati*, **16**: 84-87 (in Indonesian language).
- Ambarwati, R. dan Trijoko (2011). Kekayaan Jenis Anadara (Bivalvia: Arcidae) di Perairan Pantai Sidoarjo. *Berkalah Penelitian Hayati*, **4B**: 1-7 (in Indonesian language).
- Ambarwati, R. dan Trijoko (2015). New record of two Mactrid bivalves (Bivalvia: Mactridae) from Indonesia. *Treubia*, **42**: 1-8.
- Andri, Y., Endrawati, H. dan M. Zainur (2012). Struktur Komunitas Makrozoobentos di Perairan Morosari, Kecamatan Sayung, Kabupaten Demak. *Journal of Marine Research*, **1**: 235-242 (in Indonesian language).
- Ayunita, P. (2014). Evaluasi Perubahan Kawasan Pesisir dan Laut Kabupaten Sidoarjo Menggunakan Data Peta Tematik Multitemporal. Tugas Akhir. Jurusan Teknik Geomatika. Institut Teknologi Sepuluh November. Surabaya (in Indonesian language).
- Dewi, N.N., Pursetyo, K.T., Zakaria, M.H., Ramadhan, M.R. and R.A. Triatmaja (2017). The biomass, abundance, and distribution pattern of starfish *Asterias* sp. (Echinodermata: Asteroidea) in East Coast of Surabaya. Asean-Fen International Fisheries Symposium. IOP Conference Series: Earth and Environmental Science. 137.
- Dewi, N.N., Pursetyo, K.T., Sari, L.A., Zakaria, M.H. and M.R. Ramadhan (2018). The biomass, abundance, and distribution pattern of starfish *Asterias* sp. (Echinodermata: Asteroidea) in East Coast of Surabaya. *IOP Conference Series: Earth and Environmental Science*, **137**: 012043.
- Gosling, E. (2003). *Bivalve molluscs: Biology, ecology and culture*. Fishing New Books.
- Hasan, A.F., Suprpto, H., Rahardja, B.S. and K. Pursetyo (2017). Analysis of heavy metal content of lead (Pb) effect on gills Mikroanatomi shell structure of blood (*Anadara granosa*) in the coastal waters of Sedati. *Journal of Marine and Coastal Science*, **6**: 148-156.
- Krebs, C.J. (1989). *Ecological methodology*. Harper Collins Publishers. New York.
- Lindawaty, I. Dewiyanti dan S. Karina (2016). Distribusi dan Kepadatan Kerang Darah (*Anadara* sp.) Berdasarkan Tekstur Substrat di Perairan Ulee Lheue Banda Aceh. *Jurnal Ilmiah Mahasiswa Kelautan dan Perikanan Unsyiah*, **1**: 114-123 (in Indonesian language).
- Liyana, S.H., Sari, L.A., Dewi, N.N., Masithah, E.D., Sahidu, A.M. and K.T. Pursetyo (2019). Distribution patterns and the biomass of bivalves at Segoro Tambak estuary, Sedati, Sidoarjo, East Java. *IOP Conference Series: Earth and Environmental Science*, **236**: 012043.
- Macintosh, D.J., Ashton, E.C. and S. Havanon (2002). Mangrove rehabilitation and intertidal biodiversity: A study in the Ranong mangrove ecosystem, Thailand. *Estuarine, Coastal and Shelf Science*, **55**: 331-345.
- Moko, G.I. dan Wiweka (2012). Evaluasi Perubahan Lingkungan Wilayah Pesisir Surabaya Timur Sidoarjo dengan Menggunakan Citra Satelit Multitemporal. *Ecolab*, **6**: 1-60 (in Indonesian language).
- Novoa, A., Talley, T.S., Talley, D.M., Crooks, J.A. and N.B. Reynolds (2016). Spatial and temporal examination of bivalve communities in several estuaries of Southern California and Northern Baja California, MX. *PLOS ONE*, **11**: 1-18.
- Palomares, M.L.D. and D. Pauly (2018). SeaLifeBase. <https://www.sealifebase.ca/search.php>. 26/06/2018. 30 hal.
- Pursetyo, K.T., Thajaningsih, W. dan H. Pramono (2015). Perbandingan Morfologi Kerang Darah di Perairan Kenjeran dan Perairan Sedati. *Jurnal Ilmiah Perikanan Dan Kelautan*, **7**: 50-55 (in Indonesian language).
- Putri, A.M.S., Suryanti dan N. Widyorini (2016). Hubungan Tekstur Sedimen dengan Kandungan Bahan Organik dan Kelimpahan Makrozoobentos di Muara Sungai Banjir Kanal Timur Semarang. Indonesian. *Journal of Fisheries Science and Technology*, **2**: 75-80 (in Indonesian language).
- Rahardja, B.S., Zulkarnain, M.N.F. dan M.A. Alamsjah (2013). Studi Kandungan Logam Berat Kadmium (Cd) pada Spesies Ikan Kembung (*Rastrelliger kanagurta*) dan Kerang Darah (*Anadara granosa*) di Perairan Manyar, Gresik dan di Perairan Jabon, Sidoarjo. *Jurnal Ilmiah Perikanan dan Kelautan*, **5**: 101-109 (in Indonesian language).
- Riniatsih, I. dan E.W. Kushartono (2009). Substrat Dasar dan Parameter Oseanografi Sebagai Penentu Keberadaan Gastropoda dan Bivalvia di Pantai Sluke Kabupaten Rembang. *Jurnal Ilmu Kelautan*, **4**: 50-59 (in Indonesian language).
- Riniatsih, I. dan Widianingsih (2007). Kelimpahan dan Pola Sebaran Kerang-Kerangan (Bivalvia) di Ekosistem Padang Lamun, Perairan Jepara. *Jurnal Ilmu Kelautan*, **12**: 55-56 (in Indonesian language).
- Sari, L.A., Pursetyo, K.T., Arsad, S., Masithah, E.D., Setiawan, E. and M. Affandi (2019). The effect of nutrient abundance on distribution of cyanobacteria and chlorophyll-A in Sedati Water, Sidoarjo. *Pollution Research*, **38(August Suppl. Issue)**: S27-S32.
- Sari, L.A., Satyantini, W.H., Manan, A., Pursetyo, K.T. and N.N. Dewi (2018). The identification of plankton tropical status in the Wonokromo, Dadapan and Juanda extreme water estuary. *IOP Conference Series: Earth and Environmental Science*, **137**: 012029.
- Subekti, S., Kismiyati, Rosmanida, Andriyono, S. dan K.T. Pursetyo (2015). *Buku Ajar Avertebrata Air Edisi Revisi-2*. Fakultas Perikanan dan Kelautan. Universitas Airlangga. Surabaya (in Indonesian language).

- Tunnel, J.W. (2010). *Enyclopedia of Texas seashells: Identification, ecology, distribution and history*. Texas A&M University Press. Texas. 527 p.
- Zakaria, M.H. (2017). Hubungan Panjang Berat, Faktor Kondisi dan Nisbah Kelamin Kerang Bulu (*Anadara* sp.) di Perairan Sedati, Sidoarjo, Jawa Timur. Skripsi. Program Studi Budidaya Perairan. Fakultas Perikanan dan Kelautan. Universitas Airlangga. Surabaya (in Indonesian language).