

Table of contents

Volume 236

2019

◀ Previous issue Next issue ▶

The 1st International Conference on Fisheries and Marine Science 6 October 2018, East Java, Indonesia

Accepted papers received: 16 January 2019

Published online: 01 March 2019

Open all abstracts

Preface

OPEN ACCESS 011001

The 1st International Conference on Fisheries and Marine Science

+ Open abstract  View article  PDF

OPEN ACCESS 011002

Organizing Committee

+ Open abstract  View article  PDF

OPEN ACCESS 011003

Conference Photos

+ Open abstract  View article  PDF

OPEN ACCESS 011004

Peer review statement

+ Open abstract  View article  PDF

Papers

OPEN ACCESS 012001

The Increase in β -carotene Content in *Dunaliella salina* from the Application of Different Light Intensities

N Sugiati, E D Masithah, W Tjahjaningsih and A A Abdillah

+ Open abstract  View article  PDF

This site uses cookies. By continuing to use this site you agree to our use of cookies. To find out more,

OPEN ACCESS and Cookies policy.

012002 

Ammonia-eliminating potential of *Gracilaria* sp. And zeolite: a preliminary study of the efficient ammonia eliminator in aquatic environment

M R Royan, M H Solim and M B Santanumurti

[+ Open abstract](#) [View article](#) [PDF](#)

OPEN ACCESS

012003

Identification of extracellular enzyme-producing bacteria (proteolytic, cellulolytic, and amylolytic) in the sediment of extensive ponds in Tanggulrejo, Gresik

OA Artha, Sudarno, H Pramono and LA Sari

[+ Open abstract](#) [View article](#) [PDF](#)

OPEN ACCESS

012004

Addition of water from the treatment pond of pangasius fillet waste (*Pangasius* sp.) with different concentrations in the cultivation medium due to the population growth of *Daphnia* sp.

H P Alvian, E D Masithah and M H Azhar

[+ Open abstract](#) [View article](#) [PDF](#)

OPEN ACCESS

012005

The growth and survival rate in lettuce aquaponic systems (*Latuca sativa*) of eels in various stocking densities of eel (*Monopterus albus*)

N K Portalia, L Sulmartiwi and B S Rahardja

[+ Open abstract](#) [View article](#) [PDF](#)

OPEN ACCESS

012006

The prevalence of benedeniasis in humpback grouper (*Cromileptes altivelis*) in floating net cages in Situbondo Regency, East Java, Indonesia

S O Wijaya, S Subekti and Kismiyati

[+ Open abstract](#) [View article](#) [PDF](#)

OPEN ACCESS

012007

The prevalence of fungi on groupers (*Epinephelus* sp.) in cage mariculture systems of the northern coast of Surabaya, East Java

E Yuliasuti, R Kusdawarti and Sudarno

[+ Open abstract](#) [View article](#) [PDF](#)

OPEN ACCESS

012008

The spectrum of light and nutrients required to increase the production of phycocyanin *Spirulina platensis*

H A Wicaksono, W H Satyantini and E D Masithah

[+ Open abstract](#) [View article](#) [PDF](#)

This site uses cookies. By continuing to use this site you agree to our use of cookies. To find out more, see our [Privacy and Cookies policy](#).

012009

The growth and survival rate of the larvae of the sunu grouper (*Plectropomus leopardus*) in different temperatures

L Lutfiyah, D S Budi and M F Ulkhaq

[+](#) Open abstract [View article](#) [PDF](#)

OPEN ACCESS

012010

Preservation of common carp (*Cyprinus carpio*) sperm using 0.9% NaCl and ringer's lactate solution

D S Budi, L A Adawiyah and L Lutfiyah

[+](#) Open abstract [View article](#) [PDF](#)

OPEN ACCESS

012011

Comparison of the efficiency (flash point, freezing point, and viscosity test) of biodiesels from *Sargassum* sp.

M B Santanumurti, M R Royan, S H Samara, S Sigit and M A Alamsjah

[+](#) Open abstract [View article](#) [PDF](#)

OPEN ACCESS

012012

Study of patterns in the relationship of ecdysis with the age of freshwater crayfish *Cherax quadricarinatus* aged 76 Days

A H Fasya

[+](#) Open abstract [View article](#) [PDF](#)

OPEN ACCESS

012013

Maximum density in the *Moina macrocopa* culture able to produce parthenogenesis in female offspring

A S Mubarak, D Jusadi, M Z Junior and M A Suprayudi

[+](#) Open abstract [View article](#) [PDF](#)

OPEN ACCESS

012014

The oxygen content and dissolved oxygen consumption level of white shrimp *Litopenaeus vannamei* in the nanobubble cultivation system

D P Galang, A K Ashari, L Sulmatiwi, G Mahasri, Prayogo and LA Sari

[+](#) Open abstract [View article](#) [PDF](#)

OPEN ACCESS

012015

The effect of the epiphytes of *Chaetomorpha crassa* on the total chlorophyll-a and growth of *Gracilaria verrucosa*

A L L Handayani, R J Triastuti and L Sulmartiwi

[+](#) Open abstract [View article](#) [PDF](#)

This site uses cookies. By continuing to use this site you agree to our use of cookies. To find out more, see our Privacy and Cookies policy.

012016 

Growth monitoring of koi fish (*Cyprinus carpio*) in natural hatchery techniques in Umbulan, Pasuruan, East Java

F P Putri and N N Dewi

[+](#) [Open abstract](#) [View article](#) [PDF](#)

OPEN ACCESS

012017

Dynamic Ratio Correlation of N:P in relation to the Diatom Abundance in the Intensive System of the Vannamei (*Litopenaeus vannamei*) Shrimp Pond

E D Masithah, D D Nindarwi, T Rahma and dan R R Satrya P I

[+](#) [Open abstract](#) [View article](#) [PDF](#)

OPEN ACCESS

012018

Dynamic ratio correlation of N:P on the abundance of Bluegreen algae in an intensive system in a white shrimp (*Litopenaeous vannamei*) pond

E D Masithah, D D Nindarwi, A L A Suyoso and D Husin

[+](#) [Open abstract](#) [View article](#) [PDF](#)

OPEN ACCESS

012019

Dynamic ratio correlation of N:P toward phytoplankton explosions in intensive systems of white shrimp pond

E D Masithah, D D Nindarwi, D Husin and T Rahma

[+](#) [Open abstract](#) [View article](#) [PDF](#)

OPEN ACCESS

012020

Development of water and nutrient management models to improve multitrophic seafarming productivity

J A Surbakti, I A L Dewi, M A Alamsjah and M Lamid

[+](#) [Open abstract](#) [View article](#) [PDF](#)

OPEN ACCESS

012021

Pond soil characteristic in reclaimed tidal lowlands and its correlation with the water quality for aquaculture

M Fitriani, I Wudtisin, M Kaewnern and R H Susanto

[+](#) [Open abstract](#) [View article](#) [PDF](#)

OPEN ACCESS

012022

The dynamics of total organic matter (tom) on sangkuriang catfish (*clarias gariepinus*) farming at upt ptpbp2kp and the effectiveness of freshwater bivalve (*anodonta woodiana*) in reducing the total organic matter with varying density

D Arfiati, C D G Putra, A H Tullah, S W A Permanasari and A W Puspitasari

[+](#) [Open abstract](#) [View article](#) [PDF](#)

This site uses cookies. By continuing to use this site you agree to our use of cookies. To find out more, see our [Privacy and Cookies policy](#).



OPEN ACCESS

012023

Growth and morphological changes in relation to the maturation of male Japanese eel, *Anguilla japonica* injected with human chorionic gonadotrophin (HCG) in the different interval in the tropical region

Y T Hee, F F Ching and S Senoo

[+](#) [Open abstract](#) [View article](#) [PDF](#)

OPEN ACCESS

012024

Genetic diversity of the endangered species *Sphyrna lewini* (Griffith and Smith 1834) in Lombok based on mitochondrial DNA

S Hadi, N P Anggraini, E Muttaqin, B M Simeon, B Subhan and H Madduppa

[+](#) [Open abstract](#) [View article](#) [PDF](#)

OPEN ACCESS

012025

Sex ratio and size at first maturity of razor clam *Solen* sp. in Pamekasan and Surabaya coastal area, East Java, Indonesia

N Trisyani, N I Wijaya and I Yuniar

[+](#) [Open abstract](#) [View article](#) [PDF](#)

OPEN ACCESS

012026

Improving productivity and water quality of catfish, *Clarias* sp. cultured in an aquaponic ebb-tide system using different filtration

E Setiadi, I Taufik, Y R Widyastuti, I Ardi and D Puspaningsih

[+](#) [Open abstract](#) [View article](#) [PDF](#)

OPEN ACCESS

012027

Different substrate of trickling filter on growth, survival rate, and water quality of common carp (*Cyprinus carpio*) cultivation by using an intensive recirculation system

E Setiadi, I Taufik, Y R Widyastuti, I Ardi and A Saputra

[+](#) [Open abstract](#) [View article](#) [PDF](#)

OPEN ACCESS

012028

Water quality dynamic, production and profitability of catfish, *Clarias* sp. cultured at different design construction of aquaponic

Y R Widyastuti, E Setiadi, I Taufik and L Setijaningsih

[+](#) [Open abstract](#) [View article](#) [PDF](#)

OPEN ACCESS

012029

Effect of C:N ratio on the spore production of *Bacillus* sp. indigenous shrimp pond

A Yuniarti, N B Arifin, M Fakhri and A M Hariati

[+](#) [Open abstract](#) [View article](#) [PDF](#)

This site uses cookies. By continuing to use this site you agree to our use of cookies. To find out more, see our [Privacy and Cookies policy](#).



OPEN ACCESS 012030

Comparative Test on Bacteria in the Digestive Tract of Vannamei Shrimp (*Litopenaeus vannamei*) at Intensive and Extensive Ponds in Ujungpangkah, Gresik

D Ningrum, M Arief and dan K T Pursetyo

[+ Open abstract](#) [View article](#) [PDF](#)

OPEN ACCESS 012031

Growth Performance of Laboratory-Scale *Chaetoceros calcitrans* in Different Containers

M Jannah, M F Ulkhaq, M H Azhar, Suciyo and dan W Soemarjati

[+ Open abstract](#) [View article](#) [PDF](#)

OPEN ACCESS 012032

Study of the Dynamic Density and Diversity of Plankton at Different Brackishwater Pond Managements in Gresik, East Java

O Tilahwatih, E D Masithah and dan B S Rahardja

[+ Open abstract](#) [View article](#) [PDF](#)

OPEN ACCESS 012033

The Effect of Demineralization Stage of Agar's Solid Waste on the Characterization of Activated Carbon

R Febrianto, Sudarno and R Kusdarwati

[+ Open abstract](#) [View article](#) [PDF](#)

OPEN ACCESS 012034

The Dynamic of Density and Diversity of Cyanophyta in Different Pond Bases in Educational Pond of Faculty of Fisheries and Marine Universitas Airlangga

S Z Cahyani, E D Masithah and Prayogo

[+ Open abstract](#) [View article](#) [PDF](#)

OPEN ACCESS 012035

Effect of Different Salinity Level within Water Against Growth Rate, Survival Rate (FCR) of Catfish (*Clarias* sp.)

D Prananingtyas, Prayogo and S Rahardja

[+ Open abstract](#) [View article](#) [PDF](#)

OPEN ACCESS 012036

Molecular identification and phylogenetic reconstruction of two fiddler crabs (*Uca forcipata* and *Uca triangularis*)

S Andriyono, H Pramono and H W Kim

[+ Open abstract](#) [View article](#) [PDF](#)

This site uses cookies. By continuing to use this site you agree to our use of cookies. To find out more,

[See our Privacy and Cookies policy.](#)

012037 

The molecular identification and phylogenetic reconstruction of Palaemonid and Penaeid shrimp from the southern part of Bangladesh

M J Alam, S Andriyono, A T M Eunos and H W Kim

[+ Open abstract](#) [View article](#) [PDF](#)

OPEN ACCESS

012038

Morphometric characteristics of Fur Cockles (*Anadara spp.*) in Wonokromo and Juanda Estuary, Surabaya

P B Pamungkas, K T Pursetyo, J Triastuti and N N Dewi

[+ Open abstract](#) [View article](#) [PDF](#)

OPEN ACCESS

012039

Stock status of ark clams (*Anadara spp.*) based on dredge fishing of the east coast of Surabaya, Indonesia

N N Dewi, K T Pursetyo, O P Darmono, F R Fachri, F S Puspitasari and A Damora

[+ Open abstract](#) [View article](#) [PDF](#)

OPEN ACCESS

012040

The distribution patterns and biomass of bivalves in Segoro Tambak estuary, Sedati, Sidoarjo, East Java

S H Liyana, L A Sari, N N Dewi, E D Masithah, A M Sahidu and K T Pursetyo

[+ Open abstract](#) [View article](#) [PDF](#)

OPEN ACCESS

012041

Inventorization of reef fish on Tabuhan Island, Banyuwangi, East Java, Indonesia

Suciyono, M A Azhar, M F Ulkhaq and H Kenconoajati

[+ Open abstract](#) [View article](#) [PDF](#)

OPEN ACCESS

012042

Dynamic study on the effect of calcium hydroxide and sodium bicarbonate treatment on the N/P ratio and plankton abundance

M R N Tsany, E D Masithah, B S Rahardjo and D D Nindarwi

[+ Open abstract](#) [View article](#) [PDF](#)

OPEN ACCESS

012043

Distribution patterns and the biomass of bivalves at Segoro Tambak estuary, Sedati, Sidoarjo, East Java

S H Liyana, L A Sari, N N Dewi, E D Masithah, A M Sahidu and K T Pursetyo

[+ Open abstract](#) [View article](#) [PDF](#)

OPEN ACCESS

012044

Optimization of diatom *Hantzschia ostrearia* cultivation in different mediums and nutrients

See our privacy and cookies policy.



S Arsad, C Stavrakakis, V Turpin, P Rossa, Y Risjani, L A Sari, F S Prasetya and J-L Mouget

[+ Open abstract](#) [View article](#) [PDF](#)

OPEN ACCESS

012045

Coastal ecosystem model based on environmental suitability and carrying capacity of the fishpond in Banyuwangi Region, East Java, Indonesia

E W Setyaningrum, Maghdalena, A T K Dewi, M. Yuniartik and E D Masithah

[+ Open abstract](#) [View article](#) [PDF](#)

OPEN ACCESS

012046

Development and succession of sessile macrofouling organisms on the artificial structure in the Shallow Coastal Waters of Sabah, Malaysia

M A M Affandy, J Madin, K P Jakobsen and M Auluck

[+ Open abstract](#) [View article](#) [PDF](#)

OPEN ACCESS

012047

Fish species difference around the light of metal halide lamps and LED lamps with mini purse seine operation

M A Sofijanto, D Arfiati, T D Lelono and A Muntaha

[+ Open abstract](#) [View article](#) [PDF](#)

OPEN ACCESS

012048

Status of coral diseases and compromised health syndromes on Pemuteran shallow reefs, North Bali island

W Karim

[+ Open abstract](#) [View article](#) [PDF](#)

OPEN ACCESS

012049

Management options for restoring artificial coral reefs in Indonesia: strengthening in institutional approach

Rudianto and Ahmad Zainul

[+ Open abstract](#) [View article](#) [PDF](#)

OPEN ACCESS

012050

Growth of salt-secretor and non-salt secretor mangrove seedlings with varying salinity and their relations to habitat zonation

M Basyuni, Ramayani, A Hayullah, Prayunita, M Hamka, L A Putri and S Baba

[+ Open abstract](#) [View article](#) [PDF](#)

OPEN ACCESS

012051

Distribution of *Ctenactis Echinata* and *Fungia Consinna* coral on Mamburit island,

This site uses cookies. By continuing to use this site you agree to our use of cookies. To find out more, see our Privacy and Cookies policy.



Sawiya, D Arfiati, Guntur and U Zakiyah

[+ Open abstract](#) [View article](#) [PDF](#)

OPEN ACCESS

012052

Diversity species and condition of seagrass ecosystem in Teluk Awur and Prawean Jepara

I Riniatsih, A Ambariyanto, E Yudiati, R Hartati, W Widianingsih and R T Mahendrajaya

[+ Open abstract](#) [View article](#) [PDF](#)

OPEN ACCESS

012053

Copper (Cu) and Cadmium (Cd) toxicity on growth, chlorophyll-a and carotenoid content of phytoplankton *Nitzschia* sp

D Hindarti and A.W. Larasati

[+ Open abstract](#) [View article](#) [PDF](#)

OPEN ACCESS

012054

Vegetation Characteristic and Micro Environment of Mangrove Rehabilitation Forest at Coastal Areas of East Sinjai, South Sulawesi

H Setiawan

[+ Open abstract](#) [View article](#) [PDF](#)

OPEN ACCESS

012055

The Use of Water Lettuce (*Pistia stratiotes*) as Phytoremediator for Concentration and Deposits of Heavy Metal Lead (Pb) Tilapia (*Oreochromis niloticus*) Gills

A A D Amalia, B S Rahardja and Rr J Triastuti

[+ Open abstract](#) [View article](#) [PDF](#)

OPEN ACCESS

012056

The Effectiveness of Heavy Metals Pb, Cd and Zn Reduction in NPK Fertilizer Waste Combined with Biofilters of Seaweed (*Gracillaria* sp.), Blood Clam (*Anadara* sp.), and Zeolite

A R K Sari, R K Harryes, F A Anggraini, M A Alamsyah and dan A Ahadi

[+ Open abstract](#) [View article](#) [PDF](#)

OPEN ACCESS

012057

The Effectiveness of Combining *Gracilaria* Sp. Seaweed Biofilter and *Anadara granosa* Shell with Zeolite in the Decrease in the Level of Mercury (Hg) Heavy Metal

J A Spespatri, B S Rahardja and A A Abdillah

[+ Open abstract](#) [View article](#) [PDF](#)

OPEN ACCESS

012058

The Effectiveness of Combination of Seaweed (*Gracillaria* sp.), Blood Clam (*Anadara granosa*), and Zeolite as Biofilter in the Reduction of Heavy Metal Copper (Cu)

A A D Amalia, B S Rahardja and Rr J Triastuti

[+ Open abstract](#) [View article](#) [PDF](#)



[+ Open abstract](#) [View article](#) [PDF](#)

OPEN ACCESS

012059

Bioaccumulation of Cadmium (Cd) Heavy Metal on Seaweed (*Gracilaria* sp.) in Traditional Fishpond of Jabon Subdistrict, Sidoarjo District

O Ardiyansyah, Sudarno and Rosmanida

[+ Open abstract](#) [View article](#) [PDF](#)

OPEN ACCESS

012060

Identification of Proteolytic Bacterial Isolates in Sediment Ecosystem of Gunung Anyar Mangrove Forest, Surabaya

P B Utomo, Sudarno and B S Rahardja

[+ Open abstract](#) [View article](#) [PDF](#)

OPEN ACCESS

012061

The Analysis of Cockle (*Anadara inaequalvis*) Gonad Maturity Level in the Estuary of Banjar Kemuning River, Sedati, Sidoarjo

R F Saputra, E D Masithah and P D Wulansari

[+ Open abstract](#) [View article](#) [PDF](#)

OPEN ACCESS

012062

Spatial and Temporal Variation of Biomass Blood Cockle (*Anadara* sp.) in Estuaries Dadapan, Sedati Sub-District, Sidoarjo, East Java

M R Ramadhan, K T Pursetyo, Prayogo and N N Dewi

[+ Open abstract](#) [View article](#) [PDF](#)

OPEN ACCESS

012063

Distribution Patterns and Biomass of Bivalve in Juanda and Segoro Tambak Estuary in Sedati, Sidoarjo, East Java

S H Liyana, E D Masithah and A M Sahidu

[+ Open abstract](#) [View article](#) [PDF](#)

OPEN ACCESS

012064

Analysis of Cadmium (Cd) Heavy Metal on Sediment and Mangrove Leaves *Avicennia marina* at Mangrove Ecotourism Wonorejo, Surabaya

W C Dermawan, Prayogo and B S Rahardja

[+ Open abstract](#) [View article](#) [PDF](#)

OPEN ACCESS

012065

Analysis of Lead (Pb) Value Comparison on Seaweed (*Euचेuma cottonii*) in Bluto and Saronggi Sumenep Marine, Madura, East Java

This site uses cookies. By continuing to use this site you agree to our use of cookies. To find out more, see our [Privacy](#) and [Cookies](#) policy.



[+ Open abstract](#) [View article](#) [PDF](#)

OPEN ACCESS

012066

The potential addition of lemuru oil to commercial feed to increase the content of EPA and DHA in eels (*Monopterus albus*)

A Imanisa, M B Santanumurti, M Lamid and Agustono

[+ Open abstract](#) [View article](#) [PDF](#)

OPEN ACCESS

012067

Effect of lysine in addition to commercial feed on crude protein and the energy digestibility of gourami (*Osphronemus gouramy*)

D Setiyawan, S H Samara, Agustono and M A A Arif

[+ Open abstract](#) [View article](#) [PDF](#)

OPEN ACCESS

012068

Addition of the papain enzyme to commercial feed against protein retention and feed efficiency in eels (*Anguilla bicolor*)

DA Liono, M Arief, Prayogo and W Isoni

[+ Open abstract](#) [View article](#) [PDF](#)

OPEN ACCESS

012069

Combination of papain enzyme and phytase enzyme in commercial feed and the protein and energy retention of tilapia *Oreochromis niloticus*

A Saifulloh, M B Santanumurti, M Lamid and W P Lokapirnasari

[+ Open abstract](#) [View article](#) [PDF](#)

OPEN ACCESS

012070

The effect of giving cake artificial feed on the survival rate, and growth of Common carp (*Cyprinus carpio*) larva in an Installation of Freshwater Culture (IBAT) in Punten, Batu.

I P Zainiyah, Rozi, W H Satyantini and A M Sahidu

[+ Open abstract](#) [View article](#) [PDF](#)

OPEN ACCESS

012071

The Utilization of Phytase Enzymes and SEM Analysis in order to increase the Quality of Rice Bran as a Layer and Fish Feed

M Lamid, Anam Al-Arif and S H Warsito

[+ Open abstract](#) [View article](#) [PDF](#)

OPEN ACCESS

012072

The dynamic relationship of phytoplankton abundance and diversity in relation to white shrimp (*Litopenaeus vannamei*) feed consumption in intensive ponds

This site uses cookies. By continuing to use this site you agree to our use of cookies. To find out more, see our [Privacy and Cookies policy](#).



[+ Open abstract](#) [View article](#) [PDF](#)

OPEN ACCESS

012073

Effect of partial replacement of fish meal with *Spirulina platensis* meal in practical diets and culture location on growth, survival, and color enhancement of percula clownfish *Amphiprion percula*

S Hudaidah, B Putri, S H Samara and Y T Adiputra

[+ Open abstract](#) [View article](#) [PDF](#)

OPEN ACCESS

012074

The Effect of Different level of Probiotic Addition on Commercial Feed against Digestibility and Efficiency of Nile Tilapia Feed (*Oreochromis Niloticus*)

D Taufik, M Arief and H Kenconoati

[+ Open abstract](#) [View article](#) [PDF](#)

OPEN ACCESS

012075

The Effect of Adding Synbiotics Into Commercial Feed Towards Protein Retention and Fat Retention of Dumbo Catfish (*Clarias sp.*)

H Syevidiana, M Arief and I S Hamid

[+ Open abstract](#) [View article](#) [PDF](#)

OPEN ACCESS

012076

The Effect of Adding Lysine in Commercial Feed on Growth Rate, Feed Efficiency, and Feed Conversion Ratio to Tambaqui (*Colossoma Macropomum*)

L V D Putra, U Agustono and S H Kenconoati

[+ Open abstract](#) [View article](#) [PDF](#)

OPEN ACCESS

012077

The Effect of Coconut Shell Liquid Smoke in Commercial Feed on Total Bacteria of *Pseudomonas Aeruginosa* in the Tilapia's Kidney (*Oreochromis niloticus*)

M Rahmawati, Sudarno and S Subekti

[+ Open abstract](#) [View article](#) [PDF](#)

OPEN ACCESS

012078

The Effect of Coconut Shell Liquid Smoke in Commercial Feed Towards Total *Pseudomonasaeruginosa* Bacteria on Gastrointestinal Tract Tilapia (*Oreochromis Niloticus*)

S Rahmadini, Sudarno and S Subekti

[+ Open abstract](#) [View article](#) [PDF](#)

OPEN ACCESS

012079

Antibacterial activity of honey in preserving high-pressure cooked milkfish stored at room temperature

This site uses cookies. By continuing to use this site you agree to our use of cookies. To find out more, see our Privacy and Cookies policy.



D A Hakim, W Tjahjaningsih and Sudarno

[+ Open abstract](#) [View article](#) [PDF](#)

OPEN ACCESS

012080

Bacterial composition in the gastrointestinal tract of *Uca* spp crabs fed on *Avicennia marina* leaf litter

M A B Kareho, E D Masithah and W Tjahjaningsih

[+ Open abstract](#) [View article](#) [PDF](#)

OPEN ACCESS

012081

The correlation between ectoparasite infestation and the total plate count of *Vibrio* sp. in pacific white shrimp (*Litopenaeus vannamei*) in ponds

G Mahasri, Rozi, A T Mukti, W H Satyantini and N M Usuman

[+ Open abstract](#) [View article](#) [PDF](#)

OPEN ACCESS

012082

In vitro study of an ethanolic extract of coffea leaves to inhibit freshwater pathogenic bacteria

H Kenconoajati, MF Ulkhaq, DS Budi and MH Azhar

[+ Open abstract](#) [View article](#) [PDF](#)

OPEN ACCESS

012083

The effect of noni fruits (*Morinda citrifolia*) with different ripeness stages against the total erythrocytes and leukocytes of comet goldfish (*Carassius auratus*) infested by *Argulus*

E Setyaningsih, Kismiyati and S Subekti

[+ Open abstract](#) [View article](#) [PDF](#)

OPEN ACCESS

012084

The protection capacity of the crude and whole protein spores of *Myxobolus koi* as an immunostimulant material development in goldfish (*Cyprinus carpio*) for preventing Myxobolus

G Mahasri, M Yusuf, R Woro and M B Santanumurti

[+ Open abstract](#) [View article](#) [PDF](#)

OPEN ACCESS

012085

Identification of white spot syndrome virus (WSSV) in pacific white shrimps (*Litopenaeus vannamei*) from ponds postexposure to immunogenic membrane proteins (*Zoothamnium penaei*)

P A Wiradana, G Mahasri, R E R Sari, U C Marwiyah and R Prihadhana

[+ Open abstract](#) [View article](#) [PDF](#)

OPEN ACCESS

012086

This site uses cookies. By continuing to use this site you agree to our use of cookies. To find out more, see our Privacy and Cookies policy.



Gills and swimming leg histopathologies in pacific white shrimp (*Litopenaeus vannamei*) from ponds exposed to the immunogenic membrane proteins of *Zoothamnium penaei*

R E R Sari, G Mahasri, P A Wiradana and U C Marwiyah

[+](#) [Open abstract](#) [View article](#) [PDF](#)

OPEN ACCESS

012087

Total plate count and identification of vibrio in pacific white shrimp (*Litopenaeus vannamei*) from ponds and in those exposed to immunogenic protein membrane *Zoothamnium penaei*

U C Marwiyah, G Mahasri, R E Ratnasari and P A Wiradana

[+](#) [Open abstract](#) [View article](#) [PDF](#)

OPEN ACCESS

012088

Effectiveness of *Nitrobacter* on the specific growth rate, survival rate and feed conversion ratio of dumbo catfish *Clarias* sp. with density differences in the aquaponic system

A S Taragusti, M B Santanumurti, B S Rahardja and Prayogo

[+](#) [Open abstract](#) [View article](#) [PDF](#)

OPEN ACCESS

012089

The erythrocyte and leucocyte profile of saline tilapia (*Oreochromis Niloticus*) in a cultivation system with nanobubbles

M Gunanti, P D Wulansari and K Kinzella

[+](#) [Open abstract](#) [View article](#) [PDF](#)

OPEN ACCESS

012090

The prevalence and intensity of ectoparasites infecting vanname shrimp (*Litopenaeus vannamei*) reared in different ponds

N Nurlatiffah, Kismiyati and MF Ulkhaq

[+](#) [Open abstract](#) [View article](#) [PDF](#)

OPEN ACCESS

012091

Protozoan parasites of Vannamei Shrimp (*Litopenaeus vannamei*) in farmed fish from Pasuruan, Indonesia

U Hafidloh and P D W Sari

[+](#) [Open abstract](#) [View article](#) [PDF](#)

OPEN ACCESS

012092

Growth of *Bacillus* sp. and *Flavobacterium* sp. in culture media with the addition of liquid whey tofu waste

W H Satyantini, R M Pratiwi, A M Sahidu and D D Nindarwi

[+](#) [Open abstract](#) [View article](#) [PDF](#)

This site uses cookies. By continuing to use this site you agree to our use of cookies. To find out more, see our [Privacy and Cookies policy](#).



OPEN ACCESS

012093

The effect of noni *Morinda citrifolia* L. fruit extracts on the gill histopathological changes of Nile tilapia *Oreochromis niloticus*

A T Mukti, E Dewi, W H Satyantini, L Sulmartiwi, Sudarno and M Hassan

[+ Open abstract](#)[View article](#)[PDF](#)

OPEN ACCESS

012094

Prevalence and intensity of ectoparasites in Pacific white shrimp (*Litopenaeus vannamei*) seeds from a pond and hatchery

G Mahasri, T Hidayat and Sudarno

[+ Open abstract](#)[View article](#)[PDF](#)

OPEN ACCESS

012095

Prevalence and intensity of ectoparasites in gabus fish (*Channa striata*) at Cangkringan Fishery Cultivation Technology Development Center, Sleman, Yogyakarta

E N Fitriani, Rozi, M Arief and H Suprpto

[+ Open abstract](#)[View article](#)[PDF](#)

OPEN ACCESS

012096

Antibacterial activity of bitter melon (*Momordica charantia* L.) leaf extract against *Aeromonas hydrophila*

D A Masithoh, R Kusdarwati and D Handijatno

[+ Open abstract](#)[View article](#)[PDF](#)

OPEN ACCESS

012097

Determination of the *aerolysin* gene in *Aeromonas hydrophila* using the polymerase chain reaction (pcr) technique

G Christy, R Kusdawarti and D Handijatno

[+ Open abstract](#)[View article](#)[PDF](#)

OPEN ACCESS

012098

Bioaccumulation and histopathological effect on the gills and liver of silver barb (*Barbonymus gonionotus*) exposed to the heavy metal nickel

I Purwanti, W Arroisi, B S Rahardja and L Sulmartiwi

[+ Open abstract](#)[View article](#)[PDF](#)

OPEN ACCESS

012099

Identification and prevalence of the ectoparasite *Octolasmis* in sand lobster (*Panulirus homarus*) and bamboo lobster (*Panulirus versicolor*) in Floating Net Cages in Sape, Bima Regency, West Nusa Tenggara Province, Indonesia

L. Yusgita, Kismiyati, S. Subekti, P D Wulansari and M K Amiin

This site uses cookies. By continuing to use this site you agree to our use of cookies. To find out more, see our Privacy and Cookies policy.

[+ Open abstract](#)[View article](#)[PDF](#)

OPEN ACCESS

012100

Treatment of *Chlorella sp.* extract on heat shock cluster (HSC) response from the tissue and bloodcells proliferation of *Epinephelus fuscoguttatus-lanceolatus* infected by *Viral Nervous Necrosis*

U Yanuhar, I Al-Hamidy and N R Caesar

[+ Open abstract](#) [View article](#) [PDF](#)

OPEN ACCESS

012101

Superoxide dismutase (SOD) and metallothionein (MT) *Tubifex tubifex* at the acute mercury exposure

I M Widiastuti, A M S Hertika, M Musa and D Arfiati

[+ Open abstract](#) [View article](#) [PDF](#)

OPEN ACCESS

012102

Antifungal activity of marine sponges (Class Demospongiae) collected from Biak, Indonesia

R D Kasitowati, K Wittriansyah, A Trianto, D C Pratiwi and M A P Panjaitan

[+ Open abstract](#) [View article](#) [PDF](#)

OPEN ACCESS

012103

Antibacterial activities of *Physalis angulata* herb extract on white feces diseases (WFD) in *Litopenaeus shrimp vannamei*

E Saraswati and AS Wijaya

[+ Open abstract](#) [View article](#) [PDF](#)

OPEN ACCESS

012104

The Effects of Mercury Chloride (Hgcl₂) on the Changes in Hematology and Blood Sugar Level in Carps (*Cyprinus carpio*)

I Setiyowati, H Suprpto and G Mahasri

[+ Open abstract](#) [View article](#) [PDF](#)

OPEN ACCESS

012105

Change in Two-Spot Catfish Histopathological Liver (*Mystus nigriceps*) Accumulated with Heavy Metal Cadmium (Cd) in Ketingan Estuary, Sidoarjo - East Java, Indonesia

L Anggitasari, H Suprpto and dan D D Nindarwi

[+ Open abstract](#) [View article](#) [PDF](#)

OPEN ACCESS

012106

Effectiveness of Pepaya Leaf Extract (*Carica Papaya L.*) to Control Ectoparasite *Argulus* on Common Carp (*Cyprinus Carpio*)

L S Azizah, Kismiyati and A H Fasya

[+ Open abstract](#) [View article](#) [PDF](#)
This site uses cookies. By continuing to use this site you agree to our use of cookies. To find out more, see our Privacy and Cookies policy.



-
- OPEN ACCESS** 012107
Bacterial Identification from Marine Ornamental Fish in Fish Quarantine, Quality Control and Fishery Products Safety Class I Denpasar, Bali
N R Rukmana, G Mahasri, S N Hidayah, M F Ulkhaq and H Kenconoajati
[+](#) [Open abstract](#) [View article](#) [PDF](#)
-
- OPEN ACCESS** 012108
Prevalence and Intensity of Ectoparasites of Tilapia (*Oreochromis niloticus*) in Ponds with Low, Medium and High Stocking Density
M Indahsari, Kismiyati and M F Ulkhaq
[+](#) [Open abstract](#) [View article](#) [PDF](#)
-
- OPEN ACCESS** 012109
Texture profile of the bread produced from composite flour *Bruguiera gymnorrhiza* flour (BGF) and wheat flour
M N G Amin, M N Hasan, Zakariya, S A Pralebda, H Pramono, E Saputra, S Subekti and M A Alamsjah
[+](#) [Open abstract](#) [View article](#) [PDF](#)
-
- OPEN ACCESS** 012110
The potential of seaweed waste (*gracilaria* sp. and *eucheuma cottonii*) as a medium density fiberboard (mdf)-based pot material for better water use efficiency in tomato plants
H Kurnia, R R Rifadi, Agustono, M N G Amin, S A Sudjarwo and M A Alamsjah
[+](#) [Open abstract](#) [View article](#) [PDF](#)
-
- OPEN ACCESS** 012111
Characterization of edible coating based on surimi fillet catfish as biodegradable packaging
E Saputra
[+](#) [Open abstract](#) [View article](#) [PDF](#)
-
- OPEN ACCESS** 012112
Characteristics of the fish protein isolate recovered from Sardine by-products using the Isoelectric Solubilization- Precipitation method
H. Pramono, N T Irawan and M R A Firdaus
[+](#) [Open abstract](#) [View article](#) [PDF](#)
-
- OPEN ACCESS** 012113
The potential of peptides derived from the chymotrypsin hydrolysate of soft shelled turtle yolk against the Angiotensin I Converting Enzyme
D Y Pujiastuti and J L Hsu
[+](#) [Open abstract](#) [View article](#) [PDF](#)

This site uses cookies. By continuing to use this site you agree to our use of cookies. To find out more, see our Privacy and Cookies policy.



OPEN ACCESS

012114

Kappa and iota carrageenan combination of *Kappaphycus alvarezii* and *Eucheuma spinosum* as a gelatin substitute in ice cream raw material product

I Suryani, D I Permata Sari, D M Astutik and A Abdillah

[+ Open abstract](#) [View article](#) [PDF](#)

OPEN ACCESS

012115

Detection of antibiotic-resistant *Salmonella* sp. in the seafood products of Surabaya local market

H Pramono, A Kurniawan, N Andika, T F Putra, M A R Hazwin, S Utari, A P Kurniawan, E D Masithah and A M Sahidu

[+ Open abstract](#) [View article](#) [PDF](#)

OPEN ACCESS

012116

The effect of kappa-carrageenan fortification on the physicochemical and organoleptic properties of milkfish galantin

D Darmawan, L Sulmartiwi and A A Abdillah

[+ Open abstract](#) [View article](#) [PDF](#)

OPEN ACCESS

012117

The application of a high voltage electric field (HVEF) to reduce *Escherichia coli* and *Salmonella thyphimurium* bacteria in red snapper (*Lutjanus* sp.) fillets

D J Subakti, H Pramono and J Triastuti

[+ Open abstract](#) [View article](#) [PDF](#)

OPEN ACCESS

012118

Isolation and identification of fish import consumption bacteria in a fish quarantine center, focusing on the quality control and safety of fishery products at Tanjung Priok, Jakarta

H S Farizky and W H Satyantini

[+ Open abstract](#) [View article](#) [PDF](#)

OPEN ACCESS

012119

Replacement of gum arabic by dry *Spirullina* sp. biomass as a food emulsifier in bread making

D Wulandari, M N G Amin, E D Masithah, M Lamid and M A Alamsjah

[+ Open abstract](#) [View article](#) [PDF](#)

OPEN ACCESS

012120


Nutrient improvement of *Bruguiera gymnorrhiza* peel fruit through fermentation using commercial tempeh (Indonesian fermented soybean) mold

M N G Amin, R A Prastiya, M N Hasan, Zakariya and M A Alamsjah

This site uses cookies. By continuing to use this site you agree to our use of cookies. To find out more, see our [Privacy and Cookies policy](#).

[+ Open abstract](#) [View article](#) [PDF](#)



-
- OPEN ACCESS** 012121
DPPH scavenging property of bioactives from soft corals origin palu bay, Central Sulawesi, Indonesia
W A Tanod, U Yanuhar, Maftuch, D Wahyudi and Y Risjani
[+ Open abstract](#) [View article](#) [PDF](#)
-
- OPEN ACCESS** 012122
Extraction of bioactive compounds fruit from *Rhizophora mucronata* using sonication method
Ernawati, E Suprayitno, Hardoko and U Yanuhar
[+ Open abstract](#) [View article](#) [PDF](#)
-
- OPEN ACCESS** 012123
Harvesting *Chaetoceros gracilis* by flocculation using Chitosan
W AA Yamin, S R M Shaleh, F F Ching, R Othman, M Manjaji-Matsumoto, S Mustafa, S Shigeharu and G Kandasamy
[+ Open abstract](#) [View article](#) [PDF](#)
-
- OPEN ACCESS** 012124
The Use of Rajungan (*Portunus Pelagicus*) Shells as Flour in Wet Noodles Ingredient
A Rahma, A A Abdillah and E Saputra
[+ Open abstract](#) [View article](#) [PDF](#)
-
- OPEN ACCESS** 012125
The Potential of Lindur Fruit Flour (*Bruguiera Gymnorhiza*) in Reducing Oil Absorption of Milkfish Nugget during the Deep Frying Process
A Widyastuti, AA Abdillah and Laksmi Sulmartiwi
[+ Open abstract](#) [View article](#) [PDF](#)
-
- OPEN ACCESS** 012126
Chemical and Sensory Characteristics of Flakes Made from Seaweed (*Euचेuma cottonii*) and Soybean (*Glycine max* (L.) Merrill)
I R Firdarini, Kismiyati and A Manan
[+ Open abstract](#) [View article](#) [PDF](#)
-
- OPEN ACCESS** 012127
The Effect of Maltodextrin Concentration on the Characteristics of Snappers' (*Lutjanus* sp.) Peptone
R Ningsih, Sudarno and Agustono
[+ Open abstract](#) [View article](#) [PDF](#)
-
- OPEN ACCESS** 012128
This site uses cookies. By continuing to use this site you agree to our use of cookies. To find out more,
[open our Privacy and Cookies policy.](#) 

Physics and Chemical Characteristics of Sargassum Sp. Seaweed with Addition of Sodium Alginate Stabilizer to Different Concentrations

M Via, A A Abdillah and M A Alamsjah

[+ Open abstract](#) [View article](#) [PDF](#)

OPEN ACCESS

012129

The Effect of Sorbitol Addition on the Characteristic of Carrageenan Edible Film

M Rahmawati, M Arief and W H Satyantini

[+ Open abstract](#) [View article](#) [PDF](#)

OPEN ACCESS

012130

The Utilization of Flower Crab (*Portunus Pelagicus*) Shell as Pasta Flavor

R Rahmawati, E Saputra and A A Abdillah

[+ Open abstract](#) [View article](#) [PDF](#)

OPEN ACCESS

012131

Income analysis of catching fish using dogol (demersal danish seine) in the sub-district of Brondong, Lamongan

A Aulia, A M Sahidu and Agustono

[+ Open abstract](#) [View article](#) [PDF](#)

OPEN ACCESS

012132

Area development based on conservation and ecotourism on the Cemara Beach (Pine Trees Beach), Pakis, Banyuwangi, East Java Province, Indonesia

E W Setyaningrum, A T K Dewi, K P Prapti, Z Erwanto and H D Susanti

[+ Open abstract](#) [View article](#) [PDF](#)

OPEN ACCESS

012133

Socioeconomic and institutional factors affecting the sustainable development for fisheries in Bontang City, Indonesia

B I Gunawan

[+ Open abstract](#) [View article](#) [PDF](#)

OPEN ACCESS

012134

Factors influencing the market requirements fulfillment in small medium enterprise fish processors in East Java

W Sulistyowati, Soemarno, A Efani and M Primyastanto

[+ Open abstract](#) [View article](#) [PDF](#)

JOURNAL LINKS

[Journal home](#)

This site uses cookies. By continuing to use this site you agree to our use of cookies. To find out more,

[see our Privacy and Cookies policy.](#)



Information for organizers

Information for authors

Contact us

Reprint services from Curran Associates

This site uses cookies. By continuing to use this site you agree to our use of cookies. To find out more, see our [Privacy and Cookies policy](#).



PAPER • OPEN ACCESS

Dynamic Ratio Correlation of N:P in relation to the Diatom Abundance in the Intensive System of the Vannamei (*Litopenaeus vannamei*) Shrimp Pond

To cite this article: E D Masithah *et al* 2019 *IOP Conf. Ser.: Earth Environ. Sci.* **236** 012017

View the [article online](#) for updates and enhancements.

You may also like

- [Effect of carbohydrate types on water quality, proximate composition and glycogen content of white shrimp juvenile *Litopenaeus vannamei* \(Boone, 1931\)](#)
Zainuddin, S Aslamyah and Hadijah
- [High density aquaculture of white shrimp \(*Litopenaeus vannamei*\) in controlled tank](#)
H S Suwoyo and E A Hendrajat
- [The Effect of Dosage Combination and Feeding Frequency on Growth and Survival Rate of Vannamei Shrimp Juveniles in Ponds](#)
Z Zainuddin, S Aslamyah, K Nur et al.



244th Electrochemical Society Meeting

October 8 – 12, 2023 • Gothenburg, Sweden

50 symposia in electrochemistry & solid state science

Abstract submission deadline:
April 7, 2023

Read the call for papers &
submit your abstract!

Dynamic Ratio Correlation of N:P in relation to the Diatom Abundance in the Intensive System of the Vannamei (*Litopenaeus vannamei*) Shrimp Pond

E D Masithah^{1*}, D D Nindarwi², T Rahma³ dan R R Satrya P I³

¹ Department of Marine, Faculty of Fisheries and Marine, Airlangga University, Surabaya 60115, Indonesia

² Department of Aquaculture, Faculty of Fisheries and Marine, Airlangga University, Surabaya 60115, Indonesia

³ Program study of Aquaculture, Faculty of Fisheries and Marine, Airlangga University, Surabaya 60115, Indonesia

*Corresponding author: endang_dm@fpk.unair.ac.id

Abstract. Diatoms are one type of aquatic phytoplankton that has an important role. Diatoms, or *Bacillariophycyae*, are a phytoplankton that suits the needs of the shrimp cultivation in the pond because diatoms are an abundant primary producer and are needed as natural feed. Diatom needs nitrogen and phosphate in its life, while the nutrient itself in the water is not always in a stable condition. The research aimed to determine the dynamic ratio correlation of N:P in relation to the diatom abundance in intensive system vannamei (*Litopenaeus vannamei*) shrimp ponds in order to maintain aquatic stability or living media within intensive system vannamei shrimp cultivation. The main parameters observed were Ammonium, Nitric, Nitrate and Phosphate, as well as the abundance of diatom plankton. The supporting parameters measured were pH and clarity in the intensive vannamei shrimp pond in Banyuwangi. Based on results of the data analysis and the study about correlation of dynamic ration N:P toward abundance of Diatom, it can be concluded that the ratio value of N:P influences the composition of the level classification of the phytoplankton in aquatic cultivation. The differences in the level of ammonium, nitric, nitrate and phosphate provide different influences on the diatom abundance in the water. A high level of nitrate indicates an abundance of diatoms.

1. Introduction

At the present time, Vannamei shrimp (*Litopenaeus vannamei*) are an important fishery product. The production of giant tiger prawns in the agroindustry in Indonesia is decreasing, thus the development of Vannamei shrimp is a relevant cultivation alternative [4]. Water quality management is important for the success of shrimp cultivation. Water quality is focused on determining the availability of various organisms in a pond ecosystem, both for cultivating organisms and other biota as a compiler of the pond's overall ecosystem. Phytoplanktons are one factor that influences the water quality. Phytoplankton production in intensive cultivation is influenced by the availability of nutrients in the aquatic system, which mostly focuses on nutrients from Nitrogen (N) and Phosphate (P) [2]. Phytoplankton is expected to grow optimally in a water pond. In general, phytoplankton management is performed



by optimizing the organic compounds, through using fertilizer and changing the water [2]. Nitrogen and phosphorus are two influential parameters in water. There are many nutrients in the water, but only some of them are able to be utilized by the phytoplankton [3].

Diatoms are one important species of phytoplankton in the water. The diatom *Bacillariophyceae* is a phytoplankton that is suitable to needs of shrimp cultivation in the pond [17]. Diatoms are also a potential bio-indicator compared to other organisms [15]. The growth supporting factors of plankton are complex and interact with one another between the physical and chemical factors in the water such as dissolved oxygen, temperature and the availability of nitrogen and phosphorus [13].

The existence of diatoms in aquatic systems is influenced by various aspects. One of them is the availability of the N:P ratio, while the nutrients in the water are not stable. Regarding the condition above, it is necessary to apply further research of the correlation of the ratio of dynamic N:P in relation to the abundance of diatom in Intensive system Vannamei shrimp (*Litopenaeus vannamei*) ponds in order to maintain the water stability or living media in the intensive system in the Vannamei shrimp pond.

The problem formulated in this research was: how the correlation of the dynamic N:P ratio has a relationship on the diatom abundance in intensive systems of Vannamei shrimp (*Litopenaeus vannamei*). The aim of this research was to discover the correlation of the dynamic N:P ratio toward the diatom abundance in intensive systems of Vannamei shrimp (*Litopenaeus vannamei*) in order to maintain the water stability or living media in intensive systems of shrimp cultivation.

The benefit of this research is that it seeks to provide information for the readers about the correlation of the dynamic N:P ratio toward diatom abundance in intensive systems of Vannamei shrimp (*Litopenaeus vannamei*). The information of this research and the results are useful to develop knowledge and its application for the community, in particular, for Vannamei shrimp farmers.

2. Methodology

2.1 Tools and materials

The tools used in this research were pH paper, secchi disks, plankton nets, bailers, a hand counter, hemocytometer, drop pipette, microscope, object glass, cover glass, test kit, and sample bottle. The materials used in the research included sample water from the intensive system of vaname shrimp (*Litopenaeus vannamei*) and lugol to deactivate the plankton movements.

2.2 Research methods

The method used in this research was a survey. The research preparation was applied by preparing the necessary tools and materials, i.e. the pH paper, secchi disk, plankton net, bailer, hand counter, hemocytometer, drop pipette, microscope, object glass, cover glass, test kit, sample bottle and lugol. The water sample, as the material used to observe the diatom abundance, was taken at 3 stations, which consisted of pond plots with 4 sample points for each corner of the intensive system of Vannamei shrimp (*Litopenaeus vannamei*) as a form of data clarification. The samples were taken using a plankton net, before calculating the density. The samples had to be directly brought to the laboratory in order to be observed and analyzed. The samples were observed at 100 and 400 times enlargement under a binocular microscope with the direct calculation done using the hemocytometer. The samples needed to be directly observed to maintain the quality of the phytoplankton. The samples were used to observe the ammonium, nitrite, nitrate and phosphate. The samples were taken in the morning at 5 AM, while the water samples to observe the plankton and water quality were taken in the afternoon at 4 PM.

2.3 Calculation and observation of the diatoms

The diatom observation consisted of identify and abundance in the pond. The diatom observation was applied to 3 plots of the pond, and the sample was taken at 4 points in the corners of each plot. The samples for the diatom observation were taken using a plankton net with a mesh size of 20 microns. The plankton net was able to filter the diatom phytoplankton class, as well as being able to enable the water to

come out through the micro holes of the plankton net.

The method used in the identification and observation of the phytoplankton was a direct calculation using a hemocytometer. It was applied by taking a 1 ml water sample from the bottle sample, and then covering it with a glass cover. The observation was done by identifying the phytoplankton and calculating its density using the hemocytometer. The sum of the phytoplankton was calculated using the method suitable for the size of the plankton. The samples had to be directly calculated in order to maintain the quality of observed phytoplankton, to make it easier to identify and conduct the density calculation when observing them under the microscope.

3. Results and discussion

The results of this research consisted of the dynamic N:P ratio and plankton abundance as the main data, and with the parameters of water quality like the level of acidity (pH) and water clarity as the supporting data. The observation was applied to 3 plots in the intensive system.

3.1 Grade of N:P ratio

The N:P ratio data was obtained from the data of the total nitrogen in the ammonium, nitrite and nitrate and this was compared to phosphate to get the dynamic N:P ratio for the 3 stations/plots. The data was taken from observations every 3 days. The results of the calibration of the dynamic N:P ratio can be seen in the following graphics below.

Based on the graphic above, the N:P ratio in plot 4 from day 24 to day 27 decreased, and then it increased from day 27 to day 33. On the next day, from day 33 to day 36, the N:P ratio decreased before starting to increase again at day 39. After this, the N:P ratio decreased until day 45. At day 45 and up to day 54, the N:P increased. From day 51 to day 57, it decreased, and then increased before day 60. The cause of the fluctuations in the grade of N:P ratio was due to the changing levels of ammonium, nitrate, nitrite and phosphate as mentioned below.

The calculation of the N:P ratio in plot 4 resulted in various fluctuating situation; at the shrimp age of day 24 to 30, it increased and then decreased from day 30 to day 39. At the shrimp age of day 30 to 42, the N:P ratio increased and then slightly decreased from day 45. From day 45 to day 54, the N:P ratio increased, decreasing again from day 54 to day 57 before increasing again until day 60. The cause of the fluctuating N:P ratio is due to the changing levels of ammonium, nitrate, nitrite and phosphate as mentioned below.

3.2 Plankton abundance

Plankton with a high abundance are a species that is able to support its life more efficient than other species in the same tropical level. This means that the species have important role for the plankton community in that particular aquatic system. The observation was applied in 3 different stations/plots. The observation data was the result of every per-3-days calibration. This has been shown in the graph below.

Based on the graphic of the diatom journey above, it shows that on the initial day, the density of the diatoms remained low at a level of 0 cells/mL at day 24. From day 24 to day 39, the diatom density continually increased. The highest diatom density occurred on day 39 at 1,187,500 cells/mL. The diatom density decreased from day 39 to day 48, and then increased again until day 54. From day 57 to day 60, the diatom density decreased again.

Based on the graphic of the diatom density in plot 4, it showed initially on day 24, the diatom density remained at 0 cells/mL, which showed less density at the initial cultivation. Between day 24 to day 39, the density increased to 135,000 cells/mL. From day 39 to day 45, it decreased, and then from day 45 to day 54, diatom density continually increased. The highest level of diatom density in plot 4 was on day 54 at

682,500 cells/ml. The density then decreased until day 60.

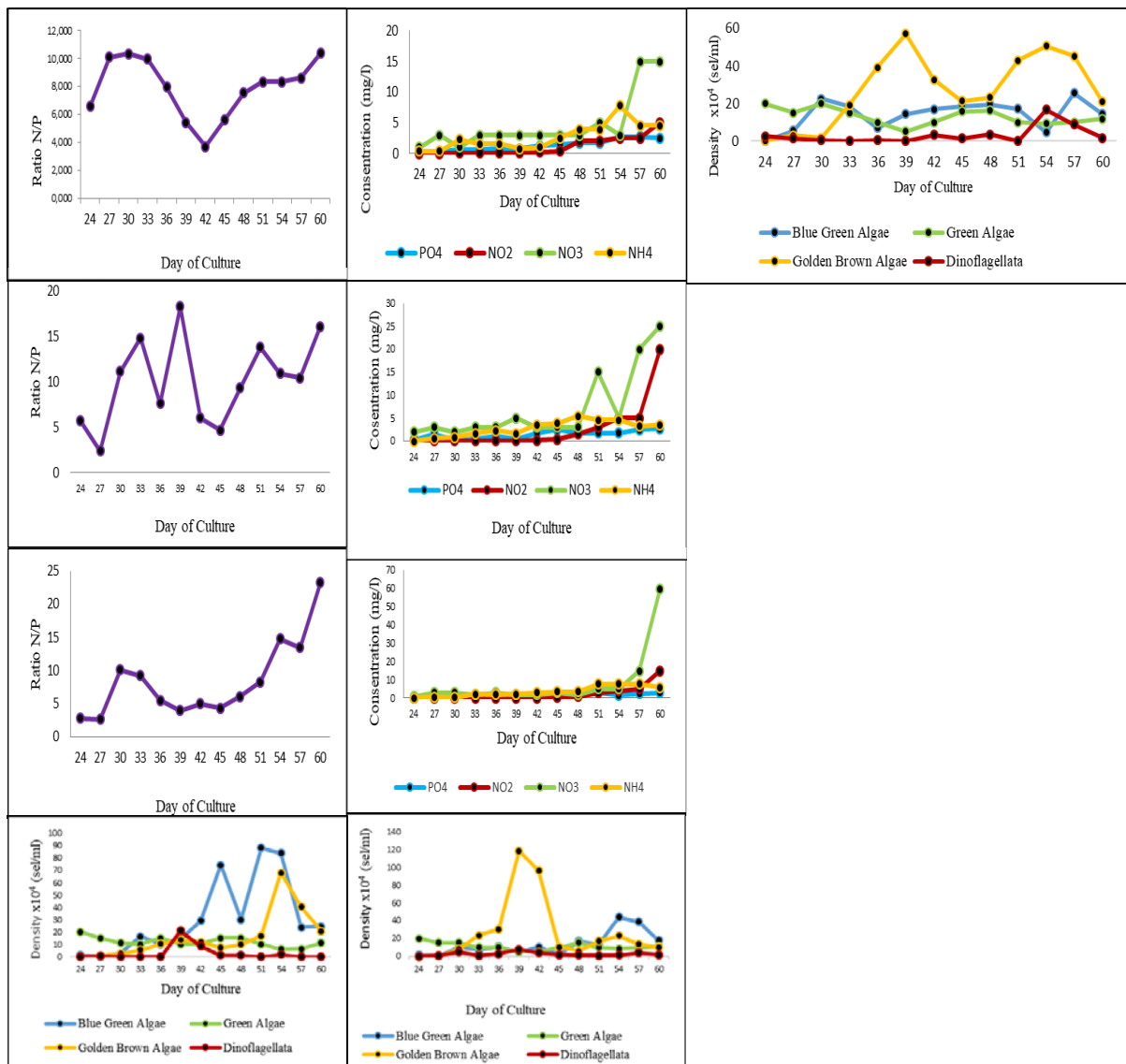


Figure 1) Ratio N: P at Plot 1 during the research; 2) Plot 1 Ammonium, Nitrite, Nitrate and Phosphate during the Research; 3) Ratio N: P Plot 4 during the research; 4) Plot Ammonium, Nitrite, Nitrate and Phosphate 4 during the research; 5) Ratio N: P Plot 7 during the research; 6) Ammonium, Nitrite, Nitrate and Phosphate during the research; 7) Phytoplankton Chart Plots 1 during the research; 8) Phytoplankton Chart 4 during the research and 9) Phytoplankton Chart 7 during the research.

Based on the graphic above, the density of the diatoms increased between day 24 and day 27, and then

decreased until day 30. The density of the diatoms increased again from day 30 to day 39, and then decreased until day 45. The lowest level of diatom density in plot 7 was on day 24 with 2,500 cells/mL and the highest level occurred on day 39 at 570,000 cells/mL. From day 45 up to day 54, the diatom density increased and then started to decrease until day 60.

Diatoms, or Bacillariophyceae, are a suitable phytoplankton related to the needs of the shrimp cultivation in the pond [17]. This is because diatoms are an abundant primary producer and are needed as natural feed in both freshwater and the sea [1]. Diatoms are suitable feed for larva, shrimp, fish and mussels. This is because they contain complete unsaturated fatty acids, vitamins and amino acids, more than synthetic feed [16]. Diatoms are also bio-indicators related to water contamination because they have wall cells made from silica. Cell walls made from silica in general are strong and remain intact, thus the analysis of cells walls will indicate accumulated contamination particles in the aquatic system.

Nutrients are necessary parameter in relation to the life and growth of microalgae. They come in the form of a chemical compound needed in the metabolic process and cannot be produced by the organisms themselves; they are obtained from nature. The organisms need nutrients in order to develop and improve their body tissue, to manage the internal processes of the body and to provide energy for the body. The availability of nutrients is basically the availability of N and P. Nutrient sources of N and P include fertilizers and waste. The usage of N basis fertilizer (like Urea, $(\text{NH}_2)_2\text{CO}$) in an area of global cultivation has been increased by 100 times the N source in the water [8]. Nitrogen for plant or algae growth is mostly used in chlorophyll, which is important for photosynthesis and further growth [7]. Phosphor is very important for the viability of water organisms because its function in relation to the storage and transfer of energy in cells is useful in the genetic system [11].

The N:P ratio is one important factor in the pond and it is one of the success determinants in relation to activities of cultivation, in particular, in shrimp cultivation. It is in line with [6]'s findings that a high concentration of nutrients in the water will affect in the aquatic system's productivity. The composition of the nutrients in the N:P ratio is well-known as a red-field ratio. The N:P ratio is strongly affected by the plankton abundance. The N:P ratio can be calculated through a data combination regarding the ammonium, nitrite and nitrate as the component N and phosphate of P.

The ammonia resulted from shrimp feces, leftover feed and dead phytoplankton. Ammonia in water comes in two forms; not ionized (ammonia, NH_3) and ionized (ammonium, NH_4). Ionized ammonia is a harmful nutrient for water organisms because it is toxic, while non-ionized ammonia can be used as a nitrogen source by the phytoplankton [5].

Nitrite in water is often found in lesser amounts because it is unstable [6]. The nitrite concentration is less detectable in the water because of the nitrification process through the nitrosomonas bacteria [6]. Natural water contains nitrite of 0.001 mg/L, and it should not be more than 0.006 mg/L. Anything above 0.05 mg/L nitrite is toxic for sensitive organisms in the water [5]. This is in line with the conditions in plot 1, plot 4 and plot 7 on the last observation day or on day 60, where the extremely high nitrate concentration caused diatom density deprivation. Nitrate is a major form of nitrogen in natural water and a main nutrient for plant or algae growth. It is dissolved easily and is unstable [5]. [12] mentioned that for optimal growth, phytoplanktons need nitrate in the range of 0.9 – 3.5 mg/L.

An aquatic system with a low phosphate concentration (0.00 – 0.02 mg/L) will be dominated by the phytoplankton of the Bacillariophyceae class (diatom). In a medium phosphate concentration (0.02 – 0.005 mg/L), the water will be dominated by Chlorophyceae. In a high phosphate concentration (>0.010 mg/L), the water will be dominated by Cyanophyceae. Orthophosphate is a form of phosphate that is able to be directly utilized by the phytoplankton for growth. Phosphate are usually available in lower amounts, and thus can be dividing factor for the growth of phytoplankton [14].

Based on the observation results of the phytoplankton during the research, there were various species of phytoplankton; Blue Green Algae, Green Algae, Golden Brown Algae and Dinoflagellata. This is in

line with [20]'s statement indicating that the ratio of N:P in the water will influence the dominant composition of the plankton species. An N:P ratio of >20 means that the nature of the water will be dominated by the plankton diatom (Golden Brown Algae), while an N:P ratio of approximately 20 means that the nature of the water will be dominated by Green Algae. An N:P ratio of <10 means that the nature of the water is suitable for Blue Green Algae.

Based on the observation result over 60 days in 3 plots, it was determined that different levels of nitrogen and phosphorus have different influences on the phytoplankton composition. An abundance of diatoms in the initial cultivation on day 24 remaining low in three plots at 0 – 2500 cells/mL. This possibly happened because of the low level of nutrients in the pond. This aligns with the statement of [18], which states that along with the increase in cultivation time, the accumulation of leftover feed and shrimp feces will also increase. Both of them are organic compounds which will then be decomposed by bacteria into inorganic compounds (such as ammonia, nitrate, nitrite and orthophosphate). The water will therefore become more fertile. Fertility enhancement as a result of accumulated left-over feed and shrimp feces will affect the increase in diatom abundance, pushing it to the highest level of 1,187,500 cells/L.

Observations were done in plot 1 on day 27, 30, 42 and 51; in plot 4 on day 30, 33, 39, 42, 45, 48, 51 and 57 and in plot 7 at day 45, 48, 51, 54 and 57. It was discovered that the increase and decrease in the ratio of N:P was suitable for the increase and decrease of the diatom density level.

The N:P ratio was noted in plot 1 on day 33, 36, 45, 48, 54, 57 and 60; in plot 4 on day 27, 36, 54 and 60 and in plot 7 on day 27, 30, 33, 39, 42 and 60. It was discovered that the increase and decrease in the N:P ratio is not in line with the increase and decrease in the diatom density level. This can be seen in the graphic on the ratio of N:P and in the graphic of the phytoplankton density mapped during the research in plots 1, 4 and 7. This has possibly happened because of the different composition levels of ammonium, nitrite, nitrate and phosphate. According to [12], an abundance of diatom can be influenced by nutrients like Nitrate and Phosphate.

Nitrate's fluctuating condition influences the increase in diatom density; this can be seen in plot 1 on day 27 and 33, in plot 4 on day 27, 33 and 51 and in plot 7 on day 24, 36 and 51, where increase nitrate caused an increase in diatom density. This aligns with the statement of [12] that nitrate (NO_3^-) is the main nutrient required for diatoms to grow and develop well. The high concentration of nitrate in the water will stimulate the growth of the diatom, because nitrate in certain concentrations provides a good condition for the diatoms to grow.

There were several conditions where there was a low level of nitrate but where the level of diatoms is increasing, like what happen in plot 1 on day 30, 51 and 54 and in plot 7 on day 33 and 39. This possibly occurred because in that condition, other classes of phytoplankton such as Blue Green Algae and Green Algae also need nutrients. However, the phytoplankton decreased as they can't absorb the nutrient very well. This means that the nutrients were more utilized by the diatoms.

As usual, phosphate was available at a few levels, therefore it can be used as dividing factor for phytoplankton growth [14]. In plot 1 on day 51 to day 60 and in plot 4 on day 57 out of 60, there was an increase in phosphate level. This was caused by an abundance of phytoplankton dominated by Blue Green Algae rather than diatoms. This aligns with a statement by [12] stating that aquatic systems with a low concentration of phosphate will be dominated by phytoplankton of the class Bacillariophyceae (diatom). In a high concentration of phosphate (>0.10 mg/L), the population will be dominated by Blue Green Algae.

Based on the plot 1, plot 4 and plot 7 data, the phytoplankton diatom density was more prevalent based on [9]'s statement that described Bacillariophyceae as a type of diatom that is more tolerant of environmental conditions such as temperature. It is able to adapt well to the environment and reproduces quickly and well. When there is an increase in nutrient levels, the diatoms are able to do mitotic division up to three times in 24 hours. Dinoflagella can only do so once every 24 hours in the same nutrient

conditions.

In diatom cultivation activities, they are also able to adapt well by regulating their spores in accordance with the statement by [10], where they determined that the Bacillariophyceae class also has good adaptability. They can function in the context of silent spores that are usually smaller than other diatom cells. These silent spores can survive and grow in poor conditions as well as in the parameters of an environment that is still relatively stable for phytoplankton growth for the Bacillariophyceae class.

4. Conclusion

These results indicate that the relationship between the dynamic data the N:P ratio and the abundance of diatoms can be concluded as follows; the N:P ratio values affect the composition of the phytoplankton classes under cultivation. The differences in the values of ammonium, nitrite, nitrate and phosphate have different effects on the diatom abundance on the continent. Under high nitrate conditions, the value of abundance leans toward the diatom phytoplankton or golden brown algae.

5. Reference

- [1] Aprisanti R, A Mulyadi and S H Siregar 2013 *JES*, **7**:241 - 252
- [2] Budiardi T, I Widyaya and D Wahjuningrum 2007 *JIA*, **6**:119 - 125
- [3] Jones-Lee A and G F Lee 2005 *Eutrophication (Excessive Fertilization)*. Water Encyclopedia: Surface and Agricultural Water Wiley, Hoboken, NJ: 107-114
- [4] Kaligis E, D Djokosetianlo and R Affandi 2009 *JMA*, **2**
- [5] Makmur, Rachmansyah and F Fahrur 2011 *The Relationship between the Quality of Ait and Plankton in the Pond of Tanjung Jabung Barat Regency, Jambi Province*. Proceedings of the Aquaculture Technology Instruction Forum: 961-968
- [6] Makmur M, H Kusnoputranto, S S Moersidik and D S Wisnubroto 2012 *WMJ*, **15**:59-64
- [7] Muchtar M. *JTMST*, **4**:304 – 317
- [8] Nasir A, M Lukman, A Tuwo and N Fadillah 2015 *JTMST*, **7**:587 - 601
- [9] Nurfadillah, A Damar and M Adiwilaga 2012 *Depik*, **1**:93 - 98
- [10] Nurhatika D, A Zulfikar and T S Raza'I 2015 *JFPIK UMRAH*, 1-12
- [11] Putri F D M, E Widyastuti and Christiani 2014 *JSB*, **1**: 96-101
- [12] Permatasari R D, Djuwito and Irwani 2016 *JM*, **5**: 224 - 232
- [13] Pratiwi E D, C J Koenawan and A Zulfikar 2015 *Abundance of Plankton on Water Quality in Malang Waters Meeting in Kabupaten Bintan Riau Islands Province*. 1-14
- [14] Suwarsih, Marsoedi, N Harahab and M Mahmudi 2016 *Condition of Water Quality in Shrimp Cultivation in Coastal Areas in Palang District, Tuban Regency*. Proceedings of the National Marine Seminar: 138 – 143
- [15] Soeprobowati and Hadisusanto 2009 *BJ*, **14**: 60-68
- [16] Soewardi K, N Pratiwi and Massenreng 2005 *JIAFS*, **12**:153 - 160
- [17] Utojo 2015 *Biosfera*, **32**:83-97
- [18] Widigdo B and Y Wardiatno 2013 *JTB*, **13**:160 -184

Acknowledgments

We are thankful to our team of researchers, and to the technicians of the ponds for their valuable help with the field work and sample collection.