

BUKTI KORESPONDENSI

Jurnal Internasional Bereputasi

Judul Artikel : Precision of the CAD/CAM Planmeca System Computer-Guided Surgery for the Placement of Dental Implants.

Penulis : Luis Alberto Cueva-Príncipe, **Dian Agustin Wahjuningrum***, Anastasia Gabriella Djuanda, Andrés Agurto-Huerta, Maria Eugenia Guerrero

Jurnal : Journal of International Dental and Medical Research Vol. 15 No. 3 p. 1107-1112, ISSN 1309-100X

Penerbit : Ektodermal Displazi Grubu

1.	Submit Manuscript	13 Mei 2022
2.	Manuscript was submitted to Journal " Journal of International Dental and Medical Research " (ID:D22_1849)	Received: 14 Mei 2022
	Your Manuscript entitled "Precision of the CAD/CAM Planmeca System Computer-Guided Surgery for the Placement of Dental Implants" has been successfully submitted to JIDMR by Email	
3.	Revision need (ID: D22_1849)	Received: 25 Mei 2022
	Your article looks well designed which titled " Precision Of The CAD/CAM Planmeca System Computer-Guided Surgery For The Placement Of Dental Implants", but it should be revise especially references section according to the JIDMR guideline http://www.jidmr.com/journal/authorguidelines/ .	
4.	Decision: Accepted for Publication	04 Juli 2022
5.	Published online	29 September 2022
6.	Published on Journal of International Dental and Medical Research Vol. 15 No. 3 p. 1107-1112	29 September 2022

Submit

1 pesan

agustin wahjuningrum Dian <dian-agustin-w@fkg.unair.ac.id>
Kepada: izzet yavuz <izzetyavuz@hotmail.com>

13 Mei 2022 pukul 21.31

Dear Prof Izzet

I would like to submit my paper to JIDMR. Hopefully I can publish at JIDMR.
Thank you so much for your support

Warm Regards

Dr. Dian Agustin Wahjuningrum, drg., SpKG(K)
Fakultas Kedokteran Gigi Universitas Airlangga
Scopus ID 57205320764
Google Scholar ID mmNqITkAAAAJ



JIDMR Planmeca Manuscript.docx
14947K

D22_1849_Dian_Agustin_Wahjuningrum_Indonesia / Submission confirmation

1 pesan

Journal of International Dental and Medical Research <jidmreditor@outlook.com>
Kepada: agustin wahjuningrum Dian <dian-agustin-w@fkg.unair.ac.id>

14 Mei 2022 pukul 05.45

Dear **Prof. Dr. Dian Agustin Wahjuningrum**,

Your manuscript entitled " **Precision Of The CAD/CAM Planmeca System Computer-Guided Surgery For The Placement Of Dental Implants**" has been successfully submitted to the JIDMR by e-mail and will be considered for publication in "**Journal of International Dental and Medical Research**".

We are sending your article for a peer-review and when we receive an evaluation we will inform you.

Thank for considering the manuscript for submission to the **Journal of International Dental and Medical Research**.

Please feel free to contact me with any questions or concerns.

Best Regards,

Editorial Secretary for JIDMR

Courtesy of Editor-in-Chief and General Director

Journal of International Dental and Medical Research ISSN 1309 - 100X<http://www.jidmr.com/journal/>

E-mail: jidmreditor@outlook.com

ECTODERMAL DYSPLASIA GROUP - TURKIYE<http://www.ektodermaldisplazi.com>

Gönderen: izzet yavuz <izzetyavuz@hotmail.com>**Gönderildi:** 13 Mayıs 2022 Cuma 21:38**Kime:** jidmreditor@outlook.com <jidmreditor@outlook.com>**Konu:** İlt: Submit**Prof. Dr. Izzet YAVUZ**

Editor-in-Chief and General Director

Journal of International Dental and Medical Research ISSN 1309 - 100X<http://www.jidmr.com/journal/>**MSc, PhD, Professor, Pediatric Dentistry***Dicle / Harran University, Faculty of Dentistry***21280 Diyarbakir, TURKIYE**

E-mail: izzetyavuz@hotmail.com, iyavuz@dicle.edu.tr

ECTODERMAL DYSPLASIA GROUP - TURKIYE<http://www.ektodermaldisplazi.com>

Gönderen: agustin wahjuningrum Dian <dian-agustin-w@fkg.unair.ac.id>**Gönderildi:** 13 Mayıs 2022 Cuma 17:31

Kime: izzet yavuz <izzetyavuz@hotmail.com>

Konu: Submit

Dear Prof Izzet

I would like to submit my paper to JIDMR. Hopefully I can publish at JIDMR.
Thank you so much for your support

Warm Regards

| Dr. Dian Agustin Wahjuningrum, drg., SpKG(K)
Fakultas Kedokteran Gigi Universitas Airlangga
Scopus ID 57205320764
Google Scholar ID mmNqITkAAAAJ

D22_1849_DIAN_AGUSTIN_WAHJUNINGRUM_Indonesia / Revision needs

1 pesan

izzet yavuz <izzetyavuz@hotmail.com>

25 Mei 2022 07.30

Kepada: agustin wahjuningrum Dian <dian-agustin-w@fkg.unair.ac.id>

Dear Prof. Dr. DIAN AGUSTIN WAHJUNINGRUM,

Your article looks well designed which titled " **Precision Of The CAD/CAM Planmeca System Computer-Guided Surgery For The Placement Of Dental Implants**", but it should be revise especially references section according to the JIDMR guideline <http://www.jidmr.com/journal/author-guidelines/> .

Referencess citations should be at the and upside of sentences without brackets as a numerical superscript.

All of the references section should be unique with a same character (Year; volume(No): page number).

Improve the article with recently published articles, which some of reference samples are below, they are full text open access, at least 3 references should have your article which recently published.

It will be welcome if you cite some of them in your article.

After the revisions you can submit your paper.

Sincerely yours.

1. Applications of PEEK in Implant Retained Finger Prosthesis

Pokpong Amornvit, Dinesh Rokaya, Sasiwimol Sanohkana

[Journal of International Dental and Medical Research 2019; 12 \(4\)](#)

2. Clinical, Technical, and Esthetic Performance of Different Ceramic Materials Crown on Posterior Single Implant-Supported Restorations: Prospective Clinical Study 3 Years

Raafat Tammam, Samar Hatem Abuzinadah, Abdulrahman Jafar Alhaddad, Ahmed Mortada

[Journal of International Dental and Medical Research 2021; 14 \(3\)](#)

3. Zirconia-Reinforced Lithium Silicate Biocompatibility Polished in Different Stages--An In Vitro Study

De Luca Pedro G, Carvalho Geraldo AP, Franco Aline BG, Kreve Simone, Avila Gisseli B, Dias Sergio C

[Journal of International Dental and Medical Research 2018; 11 \(3\)](#)

Prof. Dr. Izzet YAVUZ
Editor-in-Chief and General Director
Journal of International Dental and Medical Research **ISSN 1309 - 100X**
<http://www.jidmr.com/journal/>
MSc, PhD, Professor, Pediatric Dentistry
Dicle University, Faculty of Dentistry
21280 Diyarbakir, TURKEY
E-mail: izzetyavuz@hotmail.com, iyavuz@dicle.edu.tr
ECTODERMAL DYSPLASIA GROUP - TURKEY
<http://www.ektodermaldisplazi.com>

agustin wahjuningrum Dian <dian-agustin-w@fkg.unair.ac.id>
19.43 Kepada: izzet yavuz <izzetyavuz@hotmail.com>

1 Juni 2022

Dear Prof. Izzet Yavuz
Thank you so much for your support. I already fix and adding references from your suggestion.
Warm regards
Dian
[Kutipan teks disembunyikan]

 **MANUSCRIPT JIDMR NEW VERSION.docx**
548K

D22_1849_Dian_Agustin_Wahjuningrum_Indonesia / accept letter

1 pesan

Journal of International Dental and Medical Research <jidmreditor@outlook.com>
 Kepada: agustin wahjuningrum Dian <dian-agustin-w@fkg.unair.ac.id>

4 Juli 2022 pukul 04.19

Subject: Your article has been accepted for Publication. (**Precision Of The CAD/CAM Planmeca System Computer-Guided Surgery for The Placement of Dental Implants. Luis Alberto Cueva-Príncipe, Dian Agustin Wahjuningrum, Anastasia Gabriella Djuanda, Andrés Agurto-Huerta, Maria Eugenia Guerrero)**

Dear **Prof. Dr. Dian Agustin Wahjuningrum,**

It's a great pleasure for me to inform you that your manuscript which titled " **Precision Of The CAD/CAM Planmeca System Computer-Guided Surgery for The Placement Of Dental Implants** " has been accepted and will be finalized for **issue 2022; volume 15 number 3** which will be released either late September 2022 or early October 2022.

Send us Transfer of Copyright Agreement please, it is necessarily before sending manuscript to press <http://www.jidmr.com/journal/>, http://www.ektodermaldisplazi.com/journal/documents/Transfer_of_Copyright_Agreement.doc.

Before sending manuscript to press, I will send to you the press ready copy for your final checking.

Sincerely yours.

Open access and publication process charges for per accepted article is **900 US\$**.

You should complete your article charges process for your accepted article ASAP, in case of late charges transfer then your accepted article can be publish other any following issue.

Please inform us of the "sender's name and transaction date" after paying the publication fee.

Sincerely yours.

1- By bank transfer to the my account (as 900 US\$).

Please carefully fill in transaction form and indicate at the "Remittance Information" section over the transaction or swift bill (pay slip) section to the; Full Account Beneficiary Name, Account IBAN number and your article ID number .

Please inform JIDMR money order date when you did.

FINANCIAL INSTITUTION Vakıf Bank	BANK CODE/ABA # Vakıf Bank 015
BRANCH Dicle Üniversitesi (Diyarbakir)(S0527)Bağlı Şube	ACCOUNT HOLDER / BENEFICIARY NAME# izzet yavuz
CITY/STATE/ZIP/COUNTRY Dicle Üniversitesi Kampüs Alanı Sur. Diyarbakir / 21280/ Turkey	SWIFT CODE TVBATR2A BIC CODE XXX
	IBAN / ACCOUNT NUMBER # TR190001500158048013204615

Editorial Secretary for JIDMR

Courtesy of Editor-in-Chief and General Director


Journal of International Dental and Medical Research ISSN 1309 - 100X

<http://www.jidmr.com/journal/>

E-mail: jidmreditor@outlook.com

ECTODERMAL DYSPLASIA GROUP - TURKIYE

<http://www.ektodermaldisplazi.com>

 1712 Accept letter for paper D22_1849_Dian_Agustin_Wahjuningrum_Indonesia.doc
595K

Precision Of The CAD/CAM Planmeca System Computer-Guided Surgery For The Placement Of Dental Implants

Luis Alberto Cueva-Príncipe¹, Dian Agustin Wahjuningrum^{2*}, Anastasia Gabriella Djuanda³, Andrés Agurto-Huerta⁴, Maria Eugenia Guerrero⁵

1. Faculty of Health of Sciences, Postgraduate Department, Universidad Científica Del Sur, Lima, Peru
2. Department of Conservative Dentistry, Faculty of Dental Medicine, Universitas Airlangga, Indonesia.
3. Resident of Department of Conservative Dentistry, Faculty of Dental Medicine, Universitas Airlangga, Indonesia.
4. IDM Center, Lima, Perú
5. Department of Medico Surgical Stomatology, Faculty of Dentistry, Universidad Nacional Mayor de San Marcos, Lima, Perú

**Corresponding author:*

Dian Agustin Wahjuningrum
Faculty of Dental Medicine Universitas Airlangga
St. Mayjend. Prof. Dr. Moestopo No. 47, Surabaya, Indonesia.
E-mail: dian-agustin-w@fkg.unair.ac.id

Abstract

Dental implant systems using computer-aided surgical guide have advantages over the conventional procedures. A retrospective observational study was carried out to 56 dental implants placed according to surgical guide developed by CAD/CAM system. The guide included tooth-supported, and mucosa-supported surgical guide and implant placement in all areas of the jaws. The virtual planning was superimposed on a tomography to evaluate the precision parameters including platform distance, apex distance, angular deviation, and depth of implants.

Objectives to determine the accuracy of CAD/CAM system with a computer-aided surgery for dental implant placement based on the design and placement site.

Regarding the precision parameters, the platform distance was at 1.38 mm (± 0.66), the apex distance at 1.63 mm (± 0.97), the angular deviation at 3.97° ($\pm 3.34^\circ$) for, and the depth of implants at 1.11 mm (± 0.97). The precision parameters had no significant difference on the implant placement in the jaws, but there was a significant difference on the platform distance ($p = 0.0096$) according to the guide. It has been found that the tooth-supported surgical guide had the best precision.

The precision of implant placement using computer-assisted surgical guides with the CAD/CAM system was maintained according to the antecedent precision parameters. The guide design is a considerable factor for producing better precision as expected tooth-borne.

Keywords: Computer-aided design-surgery, dental implants, guided surgery, cone-beam computed tomography, patient satisfaction.

Introduction

Background

Computer-aided surgery for dental implant placement is an approach that modifies the conventional protocols and becomes a new technology. Such a surgery method has been adapted to the needs of specialists to allow simplification and improvement in procedures; Thus, the approach encompasses a computer-aided design and manufacturing (CAD/CAM) system which includes virtual three-dimensional planning based on cone-beam computed

tomography (CBCT) images, 3D printed virtual surgical guide and the surgical procedures using any implant systems with guided surgical kits.¹⁻⁶ The main advantages of this surgical method as indicated by Laleman, et al.²

The success of the procedures lies in the precision of the computer-aided surgical method, which the final placement of implant in patients must coincide with virtual planned position¹⁻²¹. Since the introduction of the method, various investigations have been carried out by Pettersson, et al.³ Cristache, et al.⁴, Beretta, et al.⁹, and Geng, et al.⁸ to determine the precision and obtain sufficient security and confidence in the use of that guided surgery. The precision parameters evaluated were three-dimensional discrepancies between the platform, apex, and angulation of the realized implant position with the planned ones.

Another parameter to consider is the design of the surgical guide. Lee et al.⁶ add another precision parameter, which is the depth of implants. Likewise, they have reported that there was statistically significant difference in the precision of guide designs, in which tooth-borne surgical guide was the most accurate. The precision by the implant placement is also studied by Cristache et al.⁴ They have found that there was greater precision of the implant placement in the mandible, especially the maxilla.

Another precision parameter to consider is the experience of the operator as demonstrated by Rungharassaeng et al.⁶ or Gillot et al.⁹ They have found that there was statistically significant difference in the depths of implant placement observed from experience of the operator. It concludes that experience plays an important role in obtaining greater precision. Finally, some studies have been developed to evaluate precision. Bover Ramos et al.⁵ conclude that it is necessary to carry out clinical studies on in vitro or cadaveric patients due to the greater complexity demanded.

Objectives to determine the precision of implant placement which uses the Planmeca CAD/CAM system with computer-aided surgical method according to the guide design and dental implant placement site.

Materials and methods

Research Samples

	Total	Number of guides	Number of implants
Number of patients	12		
Number of guides	fifteen		
Number of implants	56		
Guide layout			
Toothless (DS)		5	25
Dentomucosoportadas (DMS)		5	17
Mucosa-supported (MS)		2	14
Place of implantation			
Maxilla anterior area		6	eleven
Maxilla posterior area		8	24
Anterior jaw area		one	2
Jaw posterior area		6	19

Table 1. Descriptive characteristics of computer-guided implant surgery treatments.

A retrospective observational study was carried out after a pilot study that involved 10 cases obtained a precision value at the implant apex of 1.57 ± 0.60 and considered the previous precision value of 1.17 ± 0.63 for the same parameter in the research of Cristache C et al. (2017). Using the 95% confidence level, this study obtained the statistical power of 90%. Finally, there were 56 virtual implants placed in 12 patients to be observed, which included the sample from the pilot study (See Table 1). This study has obtained an ethical approval from the ethics committee of the Universidad Científica del Sur, Lima, Perú.

Research procedures

Data search was done on some databases of the Instituto de Diagnóstico Maxilofacial (IDM), Lima, Perú, where tomographic images were collected from patients who underwent multiple dental implant placement protocols using the Planmeca® CAD/CAM system in a guided surgery (Helsinki, Finland).

Preoperative CT scans were acquired by the Promax 3D Mid tomograph (Planmeca®) and had a field size of 10x10cm and voxel size of 200 microns. The scans of the physical models with and without diagnostic wax-up were obtained using the PlanScan® Lab (Planmeca®) structured light (LE) tabletop scanner with precision of 5 microns. The virtual planning was carried out with the Romexis 5.3 implant module (Planmeca®) in which implants from various commercial houses were included (Conexão®, Brazil; Dentium®, Korea; Sweden & Martina®, Italy; Neodent®, Switzerland and GMI®, Spain), all the selected guides were developed to use full guided implant placement surgical kit and

following the indications of each commercial brand. The virtual planning of the implants was carried out by a maxillofacial radiologist operator, with experience in the CAD / CAM flow of the Planmeca system and in conjunction with 5 implantologist operators with experience in guided surgery; Each of them were in charge of a respective trademark and were the ones who made the selection of the diameter, length, position of the implant in the tomography and the implant placement surgery. The guides were materialized using the Creo 3D printer (Planmeca®) with a digital light processing technology (DLP) of 2mm thickness based on light-cured resin.

Post-operative CT scans were obtained for various indications, nine scans were obtained for the realization of a new planning and preparation of a surgical guide for the placement of new implants in the jaw not operated; Three scans were performed to rule out complications of probable bucco-sinus communication, due to the very narrow position of the implants with the maxillary sinus, in all scans the ULD technology (Planmeca® Ultra-Low Dose™) of low radiation dose was used.

Research accuracy assessment

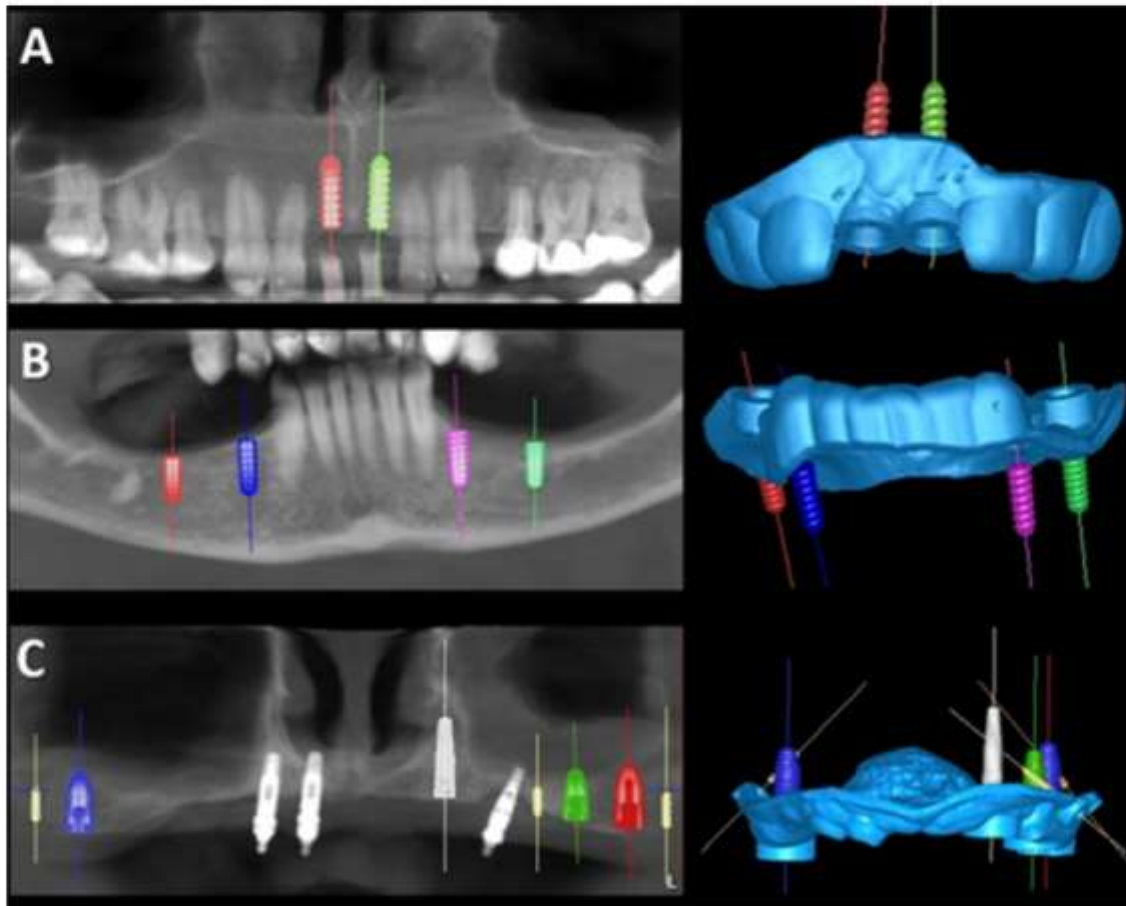


Figure 1. Types of surgical guide designs developed by the guided surgery module of the Romexis 5.3 software (Planmeca®, Finland). A: Tooth-supported; B: Dentomucosupported and C: Mucosupported.

Figure 1 shows the three-dimensional position of the inserted implant compared to the planned position was assessed using the "Embedded from 3d models" tool of the Romexis 5.3 software.

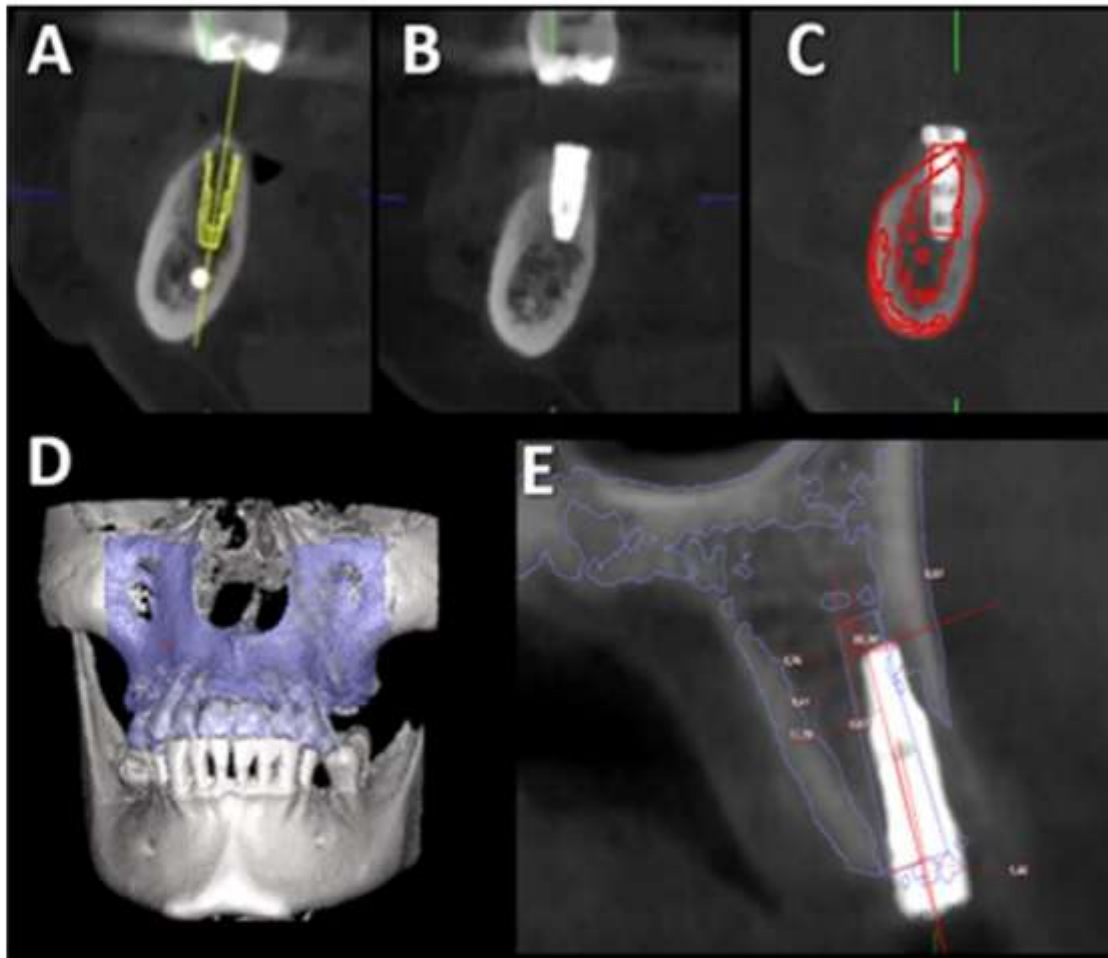


Figure 2. Procedure for superimposing the virtual planning with the control tomography. A: Virtual planning of a dental implant in the posterior area of the jaw; B: Control tomography with the implant in the real position; C and D: Superposition of the STL of the virtual planning and the presurgical tomography with the control tomography; E: Measurement of precision parameters.

The virtual planning and the preoperative tomography were converted to STL format using "3D growth" tool in bone tissue option and then merged to the control tomographic volumes, the pairing was performed by matching 3 reference points at bone and dental level (two posterior and one anterior) in each volume and by means of an automatic adjustment performed by the software (as shown by figure 2).

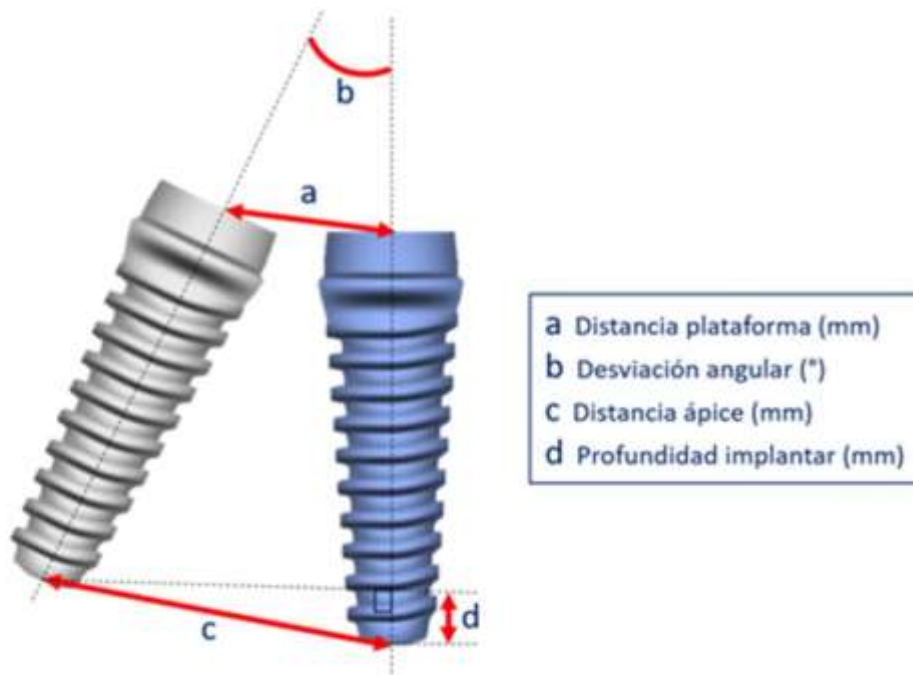


Figure 3. Parameters for evaluating implant precision. Virtually planned implant (blue) vs implant placed in real position (Grey).

In the fused volumes, transaxial cuts were made at the level of the jaws in which the following precision measurements were carried out: 1) Distance from the implant site, length in millimeters (mm); 2) Apex distance, length in millimeters (mm); 3) Implant angulation, in degrees (°) and 4) Depth of the implants concerning the major axis of the virtual implants, in millimeters (mm) (as shown by figure 3).

Statistical analysis

Descriptive statistics were performed to show the precision values. The Anova statistical tests was performed for more than two independent simples, and the Kruskal-Wallis test was used to analyze non-parametric data. These statistical tests could compare precision values according to the guide designs or implant site.

Results

A total of 56 implants were evaluated. The results show a precisión value of platform distance at 1.38 mm (± 0.66 ; 0-3.1), the apex distance at 1.63 mm (± 0.97), the angular deviation at 3.97° ($\pm 3.34^\circ$), and the Depth of implants at 1.11 mm (± 0.72).

	DS	DMS	MS	Total	P value *
--	----	-----	----	-------	-----------

Precision	Mean (DS)	Mean (DS)	Mean (DS)	Mean (DS)	Min	Max	
Platform distance (mm)	1.10 (0.41) ^a	1.72 (0.55) ^b	1.48 (0.92) ^c	1.38 (0.66)	0	3.1	0.0096 ^d
Distance apex (mm)	1.38 (0.60)	2.03 (1.07)	1.60 (1.02)	1.63 (0.97)	0.2	4.64	0.13
Implant angulation (°)	3.55 (3.32)	4.61 (3.72)	3.95 (2.99)	3.97 (3.34)	0.2	14.31	0.47
Implant depth (mm)	0.87 (0.40)	1.22 (0.82)	1.39 (0.94)	1.11 (0.72)	0.1	3.21	0.24

Table 2. Precision of the computer-guided surgery method for dental implant placement according to the surgical guide design. The different superscript letter are statistically different (Kruskall-Wallis, $P < 0.05$)

DS: Tooth-supported, DMS: Tooth-supported, MS: Muco-supported

According to the guide design, the tooth-borne surgical guide had better values in all precision parameters. The difference in precision parameters was only statistically significant ($p = 0.0009$) shown by table 2 when the tooth-supported surgical guide was compared with the tooth-supported surgical guide in terms of platform distance (1.10 + -0.41 vs 1.72 + -0.55). The precision parameters had not significant difference if seen from the implant placement in the jaws.

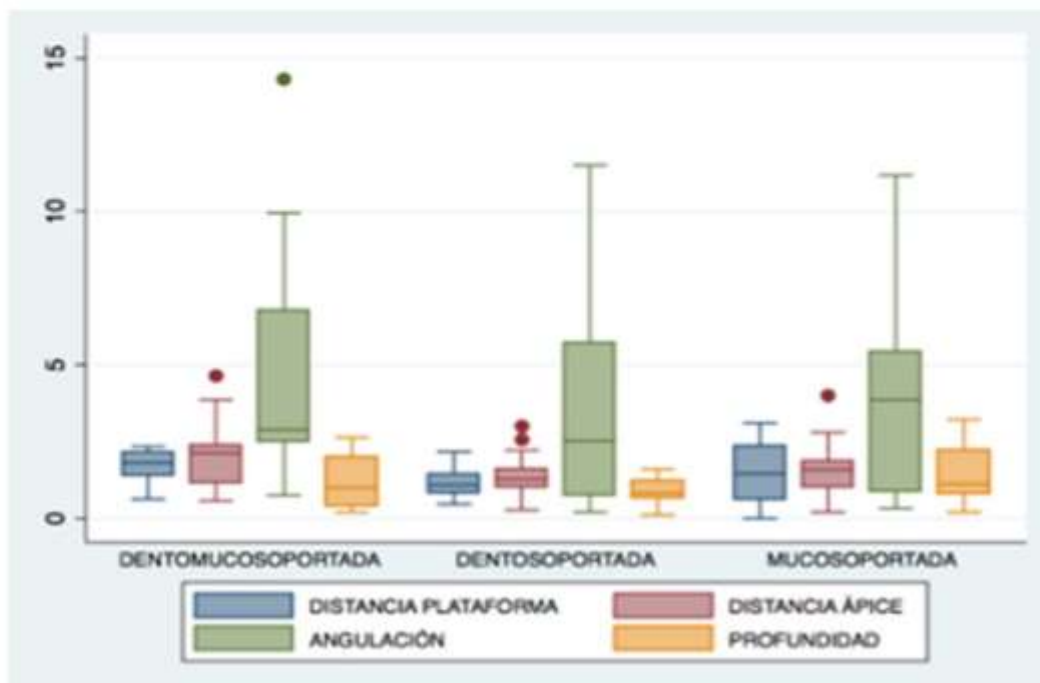


Figure 4. Precision parameters according to the design of the surgical guide.

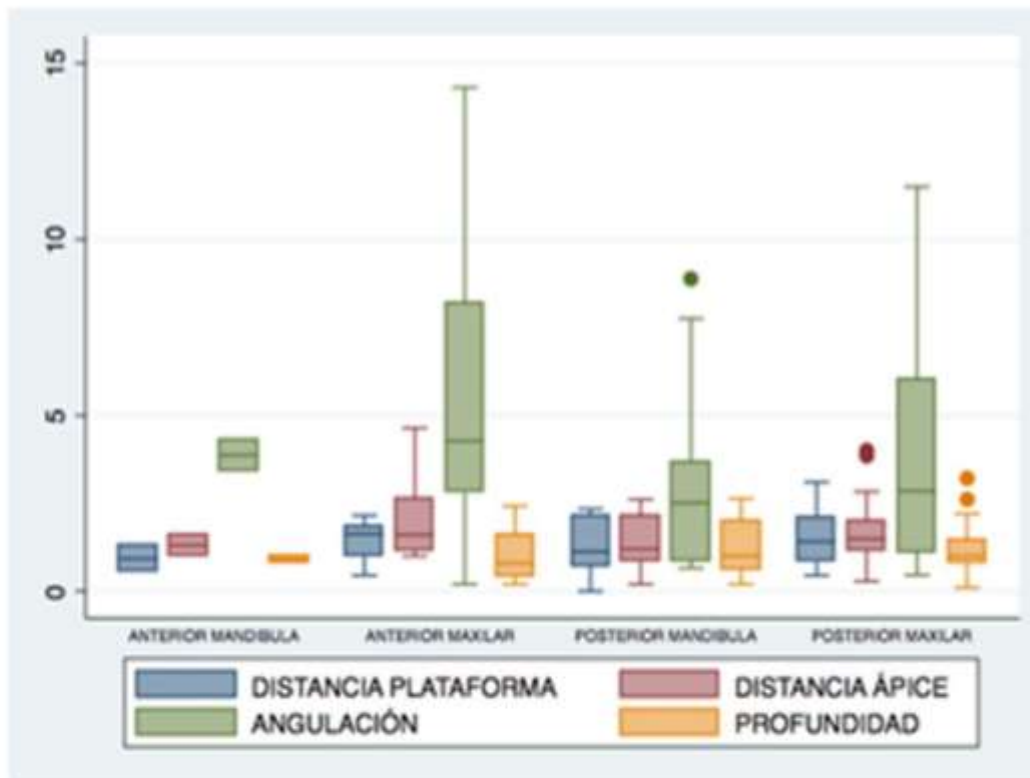


Figure 5. Precision parameters according to the place of dental implant placement.

Precision	Anterior maxilla	Posterior maxilla	Anterior jaw	Posterior jaw	P value *
	Mean (DS)	Mean (DS)	Mean (DS)	Mean (DS)	
Platform distance (mm)	1.43 (0.53)	1.50 (0.69)	0.92 (0.50)	1.27 (0.69)	0.51 *
Distance apex (mm)	1.97 (1.10)	1.70 (0.92)	1.30 (0.43)	1.39 (0.76)	0.50 **
Implant angulation (°)	5.49 (4.18)	4.23 (3.55)	3.86 (0.61)	2.78 (2.30)	0.34 **
Implant depth (mm)	0.99 (0.70)	1.12 (0.74)	0.92 (0.14)	1.12 (0.77)	0.91 **

Table 3. Comparison of the precision of the computer-guided surgery method according to the implant placement site.

* ANOVA

** Kruskal-Wallis

According to the guide design and implant site shown in the graphs of the box plots (as shown by figures 4, 5, and table 3), the implant angulation was the only one that presented a greater precision deviation. It considers an A value close to 0 which had the highest precision.

Discussion

The implant placement using computer-aided surgical guide had high precision but many factors would determine the greatest possible success and the use of the CAD / CAM in the procedures. In the present study, the precision of implant placement was evaluated using the Planmeca® CAD / CAM system with computer-aided surgical guide. The precision values of this system ranged from 1.11mm (depth of implant) to 1.63mm (apex distance). Values close to 0 refer to high precision of the system. Some variables could influence, for example the different implant systems used for a guided surgery.

Regarding the effect of precision on the implant site in the maxilla, Cristache et al.⁴ have obtained precision values of 0.798mm (DS: 0.52) for the distance of the platform, 1.17 mm (DS: 0.63) for the distance of the implant apex and 2.34 (DS (0.85) for an average angular deviation. Also, they have found statistically significant difference according to the implant placement, obtaining greater precision between the implant placement in the mandible and in the maxilla. Gillot et al.¹⁰ have also found differences in precision in terms of the implant site, but greater precision was highlighted in the maxilla than in the mandible. In contrast to both previous studies, this present study shows no statistical difference in precision not only according to the arch but also the area of the dental groups (anterior and posterior) that could affect the final precision values.

Regarding the precision values according to the guide, Lee et al.⁶ have determined that systems with metal attachments were adaptable to the guide which produced fewer angular deviations. Geng et al.⁸ mention the depth of implants was measured between the virtual implant apex and the real implant apex following the axis of the virtual implant. They have found that tooth-borne surgical guide can be more precise than tooth-supported surgical guides; This present study points out the lower deviations of the precision parameters were at 1.10mm (0.41) for the platform, 1.38mm (0.6) for the apex, 3.55 ° (3.32) for the angulation and 0.87mm (0.40) for the depth of implants placement when using tooth-supported surgical guide in front of the two other evaluated designs. The classification of the designs is conformed according to the support of the guide and the edentulism of dental patients.

To evaluate the precision parameters of guided surgery, Bover Ramos et al.⁶ conduct a systematic review and meta-analysis review that cadaveric, in vitro, and clinical studies should be performed clinically to obtain more accurate results as the precision value of dental implant placement was lower in clinical and cadaveric studies than in vitro studies due to different clinical management.

The precision and advantage of computer-aided surgery for dental implants have a direct effect on the patient well-being. This idea is demonstrated by Youk SY, et al.²² by

saying that patients undergoing this treatment had greater satisfaction compared to those under a conventional surgery. Demonstrating the precision has been quite tedious since it needs the support of other non-dental software to obtain high precision. However, this present investigation shows the tools of the different tomographic software such as Romexis 5.3 are being developed and allow the same clinical evaluation on the placement of dental implants. Above all, the main limitation of the technology lies on the high cost of the procedures.

Evaluating the precision using CBCT is not ideal as it leads to a post-operative scan of the dental patients and the radiation dose that it implies. Other technologies such as dynamic navigation allow to overcome this obstacle but are rarely used. The present technology can obtain tomographic equipment with low radiation dose as described by Yeung AWK, et al.²³. They assert this technology can have less radiation dose by reducing the exposure factor such as milliamperage (ma) and kilovoltage (Kv); however, image quality is sacrificed as the voxel size greatly increases. The difficulty in post-operative evaluations does not represent the major limitations since it seeks to evaluate complications due to the implant site or plans in the future.

Conclusions

The precision of implant placement using computer-assisted surgical guides with the CAD/CAM system was maintained according to the antecedent precision parameters. The guide design is a considerable factor for producing better precision as expected tooth-borne.

Acknowledgements

The authors are grateful to the Ministry of Research, Technology and Higher Education, Indonesia, for the funding support thus this research could be conducted.

Declaration of Interest

The authors declare that there are no conflicts of interest.

Ethical policy and institutional review board statement

Ethical clearance had been obtained from the Ethics Commission of the Universidad Científica del Sur, Lima, Perú.

References

1. Gjølvd B, Hadi D, Wennerberg A. Accuracy of surgical guides from 2 different desktop 3D printers for computed tomography-guided surgery. *J Prosthet Dent* 2019; 121 (3): 498-203.
2. Laleman I, Bernard L, Vercruyssen M, Jacobs R, Bornstein MM, et al. Guided Implant Surgery in the Edentulous Maxilla: A Systematic Review. *Int J Oral Maxillofac Implants* 2016; 31: 103-117.
3. Pettersson A, Kero T, Gillot L, Cannas B, Fäldt J, Söderberg R, et al. Accuracy of CAD / CAM-guided surgical template implant surgery on human cadavers: Part I. *J Prosthet Dent* 2010; 103: 334-342.
4. Cristache CM, Gurbanescu S. Accuracy Evaluation of a Stereolithographic Surgical Template for Dental Implant Insertion Using 3D Superimposition Protocol. *Int J Dent* 2017; 2: 2-9.

5. Bover-Ramos F, Viña-Almunia J, Cervera-Ballester J, Peñarrocha-Diago M, Garcia-Mira B. Accuracy of Implant Placement with Computer-Guided Surgery: A Systematic Review and Meta-Analysis Comparing Cadaver, Clinical, and In Vitro Studies. *Int J Oral Maxillofac Implants* 2017; 3: 1-12.
6. Lee DH, An SY, Hong MH, Jeon KB, Lee KB. Accuracy of a direct drill-guiding system with minimal tolerance of surgical instruments used for implant surgery: a prospective clinical study. *J Adv Prosthodont* 2016; 8 (3): 207-13.
7. Rungcharassaeng K, Caruso JM, Kan JYK, Schutyser F, Boumans T. Accuracy of computer-guided surgery: A comparison of operator experience. *J Prosthet Dent*. 2015; 114 (3): 407-13.
8. Geng W, Liu C, Su Y, Li J, Zhou Y. Accuracy of different types of computer-aided design / computer-aided manufacturing surgical guides for dental implant placement. *Int J Clin Exp Med* 2015; 8 (6): 8442-9.
9. Beretta M, Poli PP, Maiorana C. Accuracy of computer-aided template-guided oral implant placement: a prospective clinical study. *J Periodontal Implant Sci* 2014; 44 (4): 184-93.
10. Gillot L, Cannas B, Friberg B, Vrielinck L, Rohner D, Pettersson A. Accuracy of virtually planned and conventionally placed implants in edentulous cadaver maxillae and mandibles: a preliminary report. *J Prosthet Dent* 2014; 112 (4): 798-804.
11. Colombo M, Mangano C, Mijiritsky E, Krebs M, Hauschild U, Fortin T. Clinical applications and effectiveness of guided implant surgery: a critical review based on randomized controlled trials. *BMC Oral Health* 2017; 17 (1): 150-8.
12. Verhamme L, Meijer G, Boumans T, Haan A, Bergé S, Maal T. Clinically Relevant Accuracy Study of Computer-Planned Implant Placement in the Edentulous Maxilla Using Mucosa-Supported Surgical Templates. *Clinical Implant Dentistry and Related Research* 2013; 21-32.
13. Youk SY, Lee JH, Park JM, Heo SJ, Roh HK, Park EJ, et al. A survey of the satisfaction of patients who have undergone implant surgery with and without employing a computer-guided implant surgical template. *J Adv Prosthodont* 2014; 6 (5): 395-405.
14. Verhamme LM, Meijer GJ, Boumans T, Schutyser F, Bergé SJ, Maal TJJ. A clinically relevant validation method for implant placement after virtual planning. *Clin Oral Implants Res* 2013; 24 (11): 1265-72.
15. Capelli M, Zuffetti F, Del Fabbro M, Testori T. Immediate rehabilitation of the completely edentulous jaw with fixed prostheses supported by either upright or tilted implants: a multicenter clinical study. *Int J Oral Maxillofac Implants* 2007; 22 (4): 639-44.
16. Vercruyssen M, Cox C, Coucke W, Naert I, Jacobs R, et al. A randomized clinical trial comparing guided implant surgery (bone- or mucosa-supported) with mental navigation or the use of a pilot-drill template. *J Clin Periodontol* 2014; 41 (7): 717-23.
17. Van Assche N, Vercruyssen M, Coucke W, Teughels W, Jacobs R, Quirynen M. Accuracy of computer-aided implant placement. *Clin Oral Implants Res* 2012; 23 (6): 112-23.
18. Verhamme LM, Meijer GJ, Bergé SJ, Soehardi RA, Xi T, de Haan AFJ, et al. An Accuracy Study of Computer-Planned Implant Placement in the Augmented Maxilla Using Mucosa-Supported Surgical Templates. *Clin Implant Dent Relat Res* 2015; 17 (6): 1154-63.
19. Pozzi A, Polizzi G, Moy PK. Guided surgery with tooth-supported templates for single missing teeth: A critical review. *Eur J Oral Implantol* 2016; 9 (1): 135-153.
20. Vercruyssen M, Laleman I, Jacobs R, Quirynen M. Computer-supported implant planning and guided surgery: a narrative review. *Clin Oral Implants Res* 2015; 26: 69-76.
21. Vasak C, Watzak G, Gahleitner A, Strbac G, Schemper M, Zechner W. Computed tomography-based evaluation of template (NobelGuide™) -guided implant positions: a prospective radiological study. *Clin Oral Implants Res* 2011; 22 (10): 1157-63.
22. Youk SY, Lee JH, Park J.-M, Heo SJ, Roh HK, Park EJ, et al. A survey of the satisfaction of patients who have undergone implant surgery with and without employing a computer-guided implant surgical template. *The Journal of Advanced Prosthodontics* 2014; 6 (5): 395-405.
23. Yeung AW K, Jacobs R, & Bornstein, MM Novel low-dose protocols using cone beam computed tomography in dental medicine: a review focusing on indications, limitations, and future possibilities. *Clinical Oral Investigations*. 2019; 23 (6): 2573-2581.

Precision of the CAD/CAM Planmeca System Computer-Guided Surgery for the Placement of Dental Implants

Luis Alberto Cueva-Príncipe¹, Dian Agustin Wahjuningrum^{2*}, Anastasia Gabriella Djuanda³,
Andrés Agurto-Huerta⁴, Maria Eugenia Guerrero⁵

1. Faculty of Health of Sciences, Postgraduate Department, Universidad Científica Del Sur, Lima, Peru.

2. Department of Conservative Dentistry, Faculty of Dental Medicine, Universitas Airlangga, Indonesia.

3. Resident of Department of Conservative Dentistry, Faculty of Dental Medicine, Universitas Airlangga, Indonesia.

4. IDM Center, Lima, Peru.

5. Department of Medico Surgical Stomatology, Faculty of Dentistry, Universidad Nacional Mayor de San Marcos, Lima, Peru.

Abstract

Dental implant systems using computer-aided surgical guide have advantages over the conventional procedures. A retrospective observational study was carried out to 56 dental implants placed according to surgical guide developed by CAD/CAM system. The guide included tooth-supported, and mucosa-supported surgical guide and implant placement in all areas of the jaws. The virtual planning was superimposed on a tomography to evaluate the precision parameters including platform distance, apex distance, angular deviation, and depth of implants.

Objectives to determine the accuracy of CAD/CAM system with a computer-aided surgery for dental implant placement based on the design and placement site.

Regarding the precision parameters, the platform distance was at 1.38 mm (± 0.66), the apex distance at 1.63 mm (± 0.97), the angular deviation at 3.97° ($\pm 3.34^\circ$) for, and the depth of implants at 1.11 mm (± 0.97). The precision parameters had no significant difference on the implant placement in the jaws, but there was a significant difference on the platform distance ($p = 0.0096$) according to the guide. It has been found that the tooth-supported surgical guide had the best precision.

The precision of implant placement using computer-assisted surgical guides with the CAD/CAM system was maintained according to the antecedent precision parameters. The guide design is a considerable factor for producing better precision as expected tooth-borne.

Clinical article (J Int Dent Med Res 2022; 15(3): 1107-1112)

Keywords: Computer-aided design-surgery, dental implants, guided surgery, cone-beam computed tomography, patient satisfaction.

Received date: 14 May 2022

Accept date: 04 July 2022

Introduction

Background

Computer-aided surgery for dental implant placement is an approach that modifies the conventional protocols and becomes a new technology. Such a surgery method has been adapted to the needs of specialists to allow simplification and improvement in procedures; Thus, the approach encompasses a computer-aided design and manufacturing (CAD/CAM)

system which includes virtual three-dimensional planning based on cone-beam computed tomography (CBCT) images, 3D printed virtual surgical guide and the surgical procedures using any implant systems with guided surgical kits.¹⁻⁶ The main advantages of this surgical method as indicated by Laleman, et al.²

The success of the procedures lies in the precision of the computer-aided surgical method, which the final placement of implant in patients must coincide with virtual planned position¹⁻²¹. Since the introduction of the method, various investigations have been carried out by Pettersson, et al.³ Cristache, et al.⁴, Beretta, et al.⁹, and Geng, et al.⁸ to determine the precision and obtain sufficient security and confidence in the use of that guided surgery. The precision parameters evaluated were three-dimensional discrepancies between the platform, apex, and

*Corresponding author:

Dian Agustin Wahjuningrum,
Faculty of Dental Medicine Universitas Airlangga
St. Mayjend. Prof. Dr. Moestopo No. 47, Surabaya, Indonesia.
E-mail: dian-agustin-w@fkg.unair.ac.id

angulation of the realized implant position with the planned ones.

Another parameter to consider is the design of the surgical guide. Lee et al.⁶ add another precision parameter, which is the depth of implants. Likewise, they have reported that there was statistically significant difference in the precision of guide designs, in which tooth-borne surgical guide was the most accurate. The precision by the implant placement is also studied by Cristache et al.⁴ They have found that there was greater precision of the implant placement in the mandible, especially the maxilla.

Another precision parameter to consider is the experience of the operator as demonstrated by Rungcharassaeng et al.⁶ or Gillot et al.⁹ They have found that there was statistically significant difference in the depths of implant placement observed from experience of the operator. It concludes that experience plays an important role in obtaining greater precision. Finally, some studies have been developed to evaluate precision. Bover Ramos et al.⁵ conclude that it is necessary to carry out clinical studies on in vitro or cadaveric patients due to the greater complexity demanded.

Objectives to determine the precision of implant placement which uses the Planmeca CAD/CAM system with computer-aided surgical method according to the guide design and dental implant placement site.

Materials and methods

	Total	Number of guides	Number of implants
Number of patients	12		
Number of guides	fifteen		
Number of implants	56		
Guide layout			
Toothless (DS)		5	25
Dentomucosoportadas (DMS)		5	17
Mucosa-supported (MS)		2	14
Place of implantation			
Maxilla anterior area		6	eleven
Maxilla posterior area		8	24
Anterior jaw area		one	2
Jaw posterior area		6	19

Table 1. Descriptive characteristics of computer-guided implant surgery treatments.

Research Samples

A retrospective observational study was carried out after a pilot study that involved 10 cases obtained a precision value at the implant

apex of 1.57 ± 0.60 and considered the previous precision value of 1.17 ± 0.63 for the same parameter in the research of Cristache C et al. (2017). Using the 95% confidence level, this study obtained the statistical power of 90%. Finally, there were 56 virtual implants placed in 12 patients to be observed, which included the sample from the pilot study (See Table 1). This study has obtained an ethical approval from the ethics committee of the Universidad Científica del Sur, Lima, Perú.

Research procedures

Data search was done on some databases of the Instituto de Diagnóstico Maxilofacial (IDM), Lima, Perú, where tomographic images were collected from patients who underwent multiple dental implant placement protocols using the Planmeca® CAD/CAM system in a guided surgery (Helsinki, Finland).

Preoperative CT scans were acquired by the Promax 3D Mid tomograph (Planmeca®) and had a field size of 10x10cm and voxel size of 200 microns. The scans of the physical models with and without diagnostic wax-up were obtained using the PlanScan® Lab (Planmeca®) structured light (LE) tabletop scanner with precision of 5 microns. The virtual planning was carried out with the Romexis 5.3 implant module (Planmeca®) in which implants from various commercial houses were included (Conexão®, Brazil; Dentium®, Korea; Sweden & Martina®, Italy; Neodent®, Switzerland and GMI®, Spain), all the selected guides were developed to use full guided implant placement surgical kit and following the indications of each commercial brand. The virtual planning of the implants was carried out by a maxillofacial radiologist operator, with experience in the CAD / CAM flow of the Planmeca system and in conjunction with 5 implantologist operators with experience in guided surgery; Each of them were in charge of a respective trademark and were the ones who made the selection of the diameter, length, position of the implant in the tomography and the implant placement surgery. The guides were materialized using the Creo 3D printer (Planmeca®) with a digital light processing technology (DLP) of 2mm thickness based on light-cured resin.

Post-operative CT scans were obtained for various indications, nine scans were obtained for the realization of a new planning and preparation of a surgical guide for the placement of new

implants in the jaw not operated; Three scans were performed to rule out complications of probable bucco-sinus communication, due to the very narrow position of the implants with the maxillary sinus, in all scans the ULD technology (Planmeca® Ultra-Low Dose™) of low radiation dose was used.

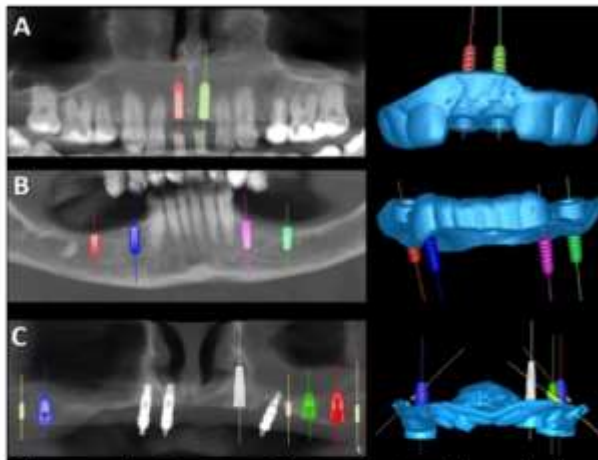


Figure 1. Types of surgical guide designs developed by the guided surgery module of the Romexis 5.3 software (Planmeca®, Finland). A: Tooth-supported; B: Dentomucosupported and C: Mucosupported.

Research accuracy assessment

Figure 1 shows the three-dimensional position of the inserted implant compared to the planned position was assessed using the "Embedded from 3d models" tool of the Romexis 5.3 software.

The virtual planning and the preoperative tomography were converted to STL format using "3D growth" tool in bone tissue option and then merged to the control tomographic volumes, the pairing was performed by matching 3 reference points at bone and dental level (two posterior and one anterior) in each volume and by means of an automatic adjustment performed by the software (as shown by figure 2).

In the fused volumes, transaxial cuts were made at the level of the jaws in which the following precision measurements were carried out: 1) Distance from the implant site, length in millimeters (mm); 2) Apex distance, length in millimeters (mm); 3) Implant angulation, in degrees (°) and 4) Depth of the implants concerning the major axis of the virtual implants, in millimeters (mm) (as shown by figure 3).

Statistical analysis

Descriptive statistics were performed to show the precision values. The Anova statistical tests was performed for more than two independent simples, and the Kruskal-Wallis test was used to analyze non-parametric data. These statistical tests could compare precision values according to the guide designs or implant site.

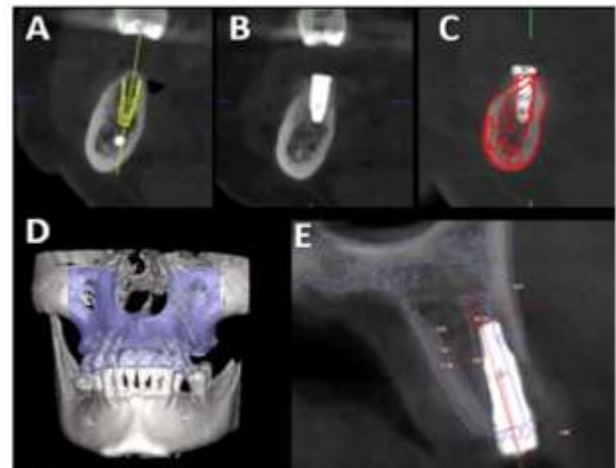


Figure 2. Procedure for superimposing the virtual planning with the control tomography. A: Virtual planning of a dental implant in the posterior area of the jaw; B: Control tomography with the implant in the real position; C and D: Superposition of the STL of the virtual planning and the presurgical tomography with the control tomography; E: Measurement of precision parameters.

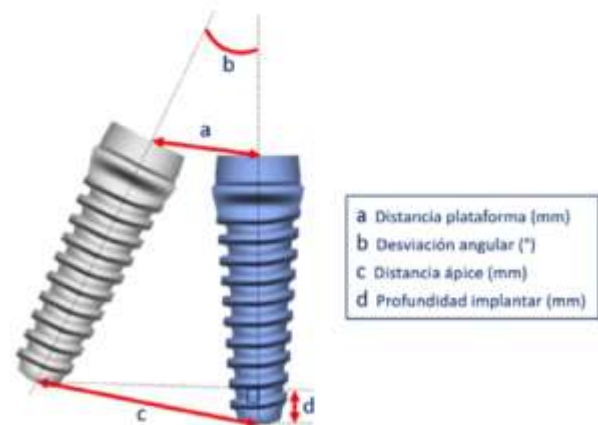


Figure 3. Parameters for evaluating implant precision. Virtually planned implant (blue) vs implant placed in real position (Grey)

Results

A total of 56 implants were evaluated. The results show a precision value of platform distance at 1.38 mm (± 0.66 ; 0-3.1), the apex distance at 1.63 mm (± 0.97), the angular deviation at 3.97° ($\pm 3.34^\circ$), and the Depth of implants at 1.11 mm (± 0.72).

Precision	DS	DMS	MS	Total			P value *
	Mean (DS)	Mean (DS)	Mean (DS)	Mean (DS)	Min	Max	
Platform distance (mm)	1.10 (0.41) ^a	1.72 (0.55) ^b	1.48 (0.92) ^c	1.38 (0.66)	0	3.1	0.0096 ^c
Distance apex (mm)	1.38 (0.60)	2.03 (1.07)	1.60 (1.02)	1.63 (0.97)	0.2	4.64	0.13
Implant angulation (°)	3.55 (3.32)	4.61 (3.72)	3.95 (2.99)	3.97 (3.34)	0.2	14.31	0.47
Implant depth (mm)	0.87 (0.40)	1.22 (0.82)	1.39 (0.94)	1.11 (0.72)	0.1	3.21	0.24

Table 2. Precision of the computer-guided surgery method for dental implant placement according to the surgical guide design. The different superscript letter are statistically different (Kruskall-Wallis, $P < 0.05$)

DS: Tooth-supported, DMS: Tooth-supported, MS: Muco-supported

According to the guide design, the tooth-borne surgical guide had better values in all precision parameters. The difference in precision parameters was only statistically significant ($p = 0.0009$) shown by table 2 when the tooth-supported surgical guide was compared with the tooth-supported surgical guide in terms of platform distance (1.10 + -0.41 vs 1.72 + -0.55). The precision parameters had not significant difference if seen from the implant placement in the jaws.

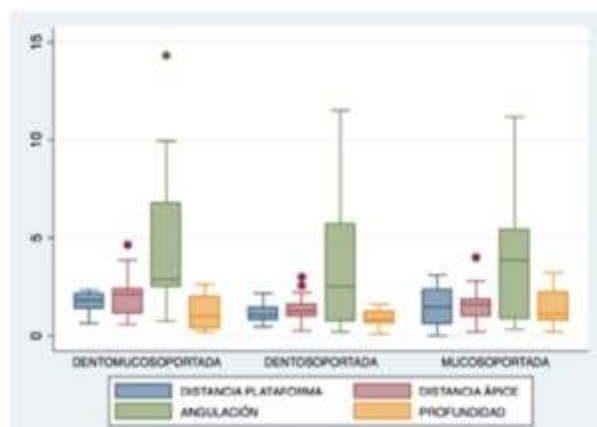


Figure 4. Precision parameters according to the design of the surgical guide.

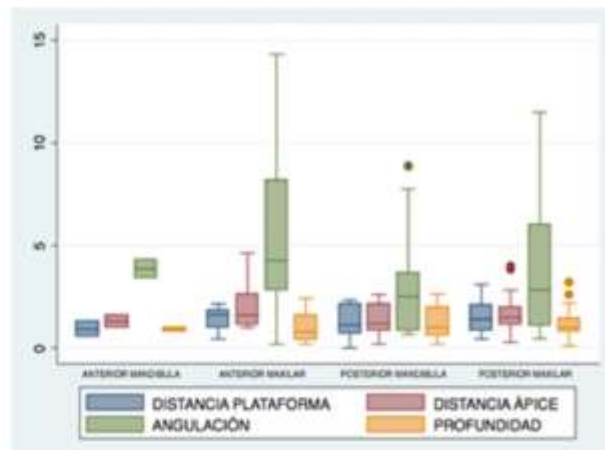


Figure 5. Precision parameters according to the place of dental implant placement.

Precision	Anterior maxilla	Posterior maxilla	Anterior jaw	Posterior jaw	P value *
	Mean (DS)	Mean (DS)	Mean (DS)	Mean (DS)	
Platform distance (mm)	1.43 (0.63)	1.50 (0.69)	0.92 (0.50)	1.27 (0.69)	0.51 *
Distance apex (mm)	1.97 (1.10)	1.70 (0.92)	1.30 (0.43)	1.39 (0.76)	0.50 **
Implant angulation (°)	5.40 (4.18)	4.23 (3.55)	3.86 (0.61)	2.78 (2.30)	0.34 **
Implant depth (mm)	0.99 (0.70)	1.12 (0.74)	0.92 (0.14)	1.12 (0.77)	0.91 **

Table 3. Comparison of the precision of the computer-guided surgery method according to the implant placement site.

* ANOVA

** Kruskal-Wallis

According to the guide design and implant site shown in the graphs of the box plots (as shown by figures 4, 5, and table 3), the implant angulation was the only one that presented a greater precision deviation. It considers an A value close to 0 which had the highest precision.

Discussion

The implant placement using computer-aided surgical guide had high precision but many factors would determine the greatest possible success and the use of the CAD / CAM in the procedures. In the present study, the precision of implant placement was evaluated using the Planmeca® CAD / CAM system with computer-aided surgical guide. The precision values of this system ranged from 1.11mm (depth of implant) to 1.63mm (apex distance). Values close to 0 refer to high precision of the system. Some variables could influence, for example the different implant systems used for a guided surgery.

Regarding the effect of precision on the implant site in the maxilla, Cristache et al.⁴ have obtained precision values of 0.798mm (DS: 0.52) for the distance of the platform, 1.17 mm (DS: 0.63) for the distance of the implant apex and 2.34 (DS (0.85) for an average angular deviation. Also, they have found statistically significant difference according to the implant placement, obtaining greater precision between the implant placement in the mandible and in the maxilla. Gillot et al.¹⁰ have also found differences in precision in terms of the implant site, but greater precision was highlighted in the maxilla than in the mandible. In contrast to both previous studies, this present study shows no statistical difference in precision not only according to the arch but also the area of the dental groups (anterior and posterior) that could affect the final precision values.

Regarding the precision values according to the guide, Lee et al.⁶ have determined that systems with metal attachments were adaptable to the guide which produced fewer angular deviations. Geng et al.⁸ mention the depth of implants was measured between the virtual implant apex and the real implant apex following the axis of the virtual implant. They have found that tooth-borne surgical guide can be more precise than tooth-supported surgical guides; This present study points out the lower deviations of the precision parameters were at 1.10mm (0.41) for the platform, 1.38mm (0.6) for the apex, 3.55 ° (3.32) for the angulation and 0.87mm (0.40) for the depth of implants placement when using tooth-supported surgical guide in front of the two other evaluated designs. The classification of the designs is conformed according to the support of the guide and the edentulism of dental patients.

To evaluate the precision parameters of guided surgery, Bover Ramos et al.⁶ conduct a systematic review and meta-analysis review that cadaveric, in vitro, and clinical studies should be performed clinically to obtain more accurate results as the precision value of dental implant placement was lower in clinical and cadaveric studies than in vitro studies due to different clinical management.

The precision and advantage of computer-aided surgery for dental implants have a direct effect on the patient well-being. This idea is demonstrated by Youk, et al.²² by saying that patients undergoing this treatment had greater

satisfaction compared to those under a conventional surgery. Demonstrating the precision has been quite tedious since it needs the support of other non-dental software to obtain high precision. However, this present investigation shows the tools of the different tomographic software such as Romexis 5.3 are being developed and allow the same clinical evaluation on the placement of dental implants. Above all, the main limitation of the technology lies on the high cost of the procedures.

Evaluating the precision using CBCT is not ideal as it leads to a post-operative scan of the dental patients and the radiation dose that it implies. Other technologies such as dynamic navigation allow to overcome this obstacle but are rarely used. The present technology can obtain tomographic equipment with low radiation dose as described by Yeung, et al.²³. They assert this technology can have less radiation dose by reducing the exposure factor such as milliamperage (ma) and kilovoltage (Kv); however, image quality is sacrificed as the voxel size greatly increases. The difficulty in post-operative evaluations does not represent the major limitations since it seeks to evaluate complications due to the implant site or plans in the future.

Conclusions

The precision of implant placement using computer-assisted surgical guides with the CAD/CAM system was maintained according to the antecedent precision parameters. The guide design is a considerable factor for producing better precision as expected tooth-borne.

Acknowledgements

The authors are grateful to the Ministry of Research, Technology and Higher Education, Indonesia, for the funding support thus this research could be conducted.

Declaration of Interest

The authors declare that there are no conflicts of interest.

References

1. Gjelvold B, Hadi D, Wennerberg A. Accuracy of surgical guides from 2 different desktop 3D printers for computed tomography-guided surgery. *J Prosthet Dent* 2019; 121 (3): 498-203.
2. Laleman I, Bernard L, Vercruyssen M, Jacobs R, Bornstein MM, et al. Guided Implant Surgery in the Edentulous Maxilla: A Systematic Review. *Int J Oral Maxillofac Implants* 2016; 31: 103-117.
3. Petttersson A, Kero T, Gillot L, Cannas B, Fäldt J, Söderberg R, et al. Accuracy of CAD / CAM-guided surgical template implant surgery on human cadavers: Part I. *J Prosthet Dent* 2010; 103: 334-342.
4. Cristache CM, Gurbanescu S. Accuracy Evaluation of a Stereolithographic Surgical Template for Dental Implant Insertion Using 3D Superimposition Protocol. *Int J Dent* 2017; 2: 2-9.
5. Bover-Ramos F, Viña-Almunia J, Cervera-Ballester J, Peñarrocha-Diago M, García-Mira B. Accuracy of Implant Placement with Computer-Guided Surgery: A Systematic Review and Meta-Analysis Comparing Cadaver, Clinical, and In Vitro Studies. *Int J Oral Maxillofac Implants* 2017; 3: 1-12.
6. Lee DH, An SY, Hong MH, Jeon KB, Lee KB. Accuracy of a direct drill-guiding system with minimal tolerance of surgical instruments used for implant surgery: a prospective clinical study. *J Adv Prosthodont* 2016; 8 (3): 207-13.
7. Rungcharassaeng K, Caruso JM, Kan JYK, Schutyser F, Boumans T. Accuracy of computer-guided surgery: A comparison of operator experience. *J Prosthet Dent*. 2015; 114 (3): 407-13.
8. Geng W, Liu C, Su Y, Li J, Zhou Y. Accuracy of different types of computer-aided design / computer-aided manufacturing surgical guides for dental implant placement. *Int J Clin Exp Med* 2015; 8 (6): 8442-9.
9. Beretta M, Poli PP, Maiorana C. Accuracy of computer-aided template-guided oral implant placement: a prospective clinical study. *J Periodontal Implant Sci* 2014; 44 (4): 184-93.
10. Gillot L, Cannas B, Friberg B, Vrielinck L, Rohner D, Petttersson A. Accuracy of virtually planned and conventionally placed implants in edentulous cadaver maxillae and mandibles: a preliminary report. *J Prosthet Dent* 2014; 112 (4): 798-804.
11. Colombo M, Mangano C, Mijiritsky E, Krebs M, Hauschild U, Fortin T. Clinical applications and effectiveness of guided implant surgery: a critical review based on randomized controlled trials. *BMC Oral Health* 2017; 17 (1): 150-8.
12. Verhamme L, Meijer G, Boumans T, Haan A, Bergé S, Maal T. Clinically Relevant Accuracy Study of Computer-Planned Implant Placement in the Edentulous Maxilla Using Mucosa-Supported Surgical Templates. *Clinical Implant Dentistry and Related Research* 2013; 21-32.
13. Youk SY, Lee JH, Park JM, Heo SJ, Roh HK, Park EJ, et al. A survey of the satisfaction of patients who have undergone implant surgery with and without employing a computer-guided implant surgical template. *J Adv Prosthodont* 2014; 6 (5): 395-405.
14. Verhamme LM, Meijer GJ, Boumans T, Schutyser F, Bergé SJ, Maal TJJ. A clinically relevant validation method for implant placement after virtual planning. *Clin Oral Implants Res* 2013; 24 (11): 1265-72.
15. Capelli M, Zuffetti F, Del Fabbro M, Testori T. Immediate rehabilitation of the completely edentulous jaw with fixed prostheses supported by either upright or tilted implants: a multicenter clinical study. *Int J Oral Maxillofac Implants* 2007; 22 (4): 639-44.
16. Vercruyssen M, Cox C, Coucke W, Naert I, Jacobs R, et al. A randomized clinical trial comparing guided implant surgery (bone- or mucosa-supported) with mental navigation or the use of a pilot-drill template. *J Clin Periodontol* 2014; 41 (7): 717-23.
17. Van Assche N, Vercruyssen M, Coucke W, Teughels W, Jacobs R, Quirynen M. Accuracy of computer-aided implant placement. *Clin Oral Implants Res* 2012; 23 (6): 112-23.
18. Verhamme LM, Meijer GJ, Bergé SJ, Soehardi RA, Xi T, de Haan AFJ, et al. An Accuracy Study of Computer-Planned Implant Placement in the Augmented Maxilla Using Mucosa-Supported Surgical Templates. *Clin Implant Dent Relat Res* 2015; 17 (6): 1154-63.
19. Pozzi A, Polizzi G, Moy PK. Guided surgery with tooth-supported templates for single missing teeth: A critical review. *Eur J Oral Implantol* 2016; 9 (1): 135-153.
20. Vercruyssen M, Laleman I, Jacobs R, Quirynen M. Computer-supported implant planning and guided surgery: a narrative review. *Clin Oral Implants Res* 2015; 26: 69-76.
21. Vasak C, Watzak G, Gahleitner A, Strbac G, Schemper M, Zechner W. Computed tomography-based evaluation of template (NobelGuideTM) -guided implant positions: a prospective radiological study. *Clin Oral Implants Res* 2011; 22 (10): 1157-63.
22. Youk SY, Lee JH, Park J.-M, Heo SJ, Roh HK, Park EJ, et al. A survey of the satisfaction of patients who have undergone implant surgery with and without employing a computer-guided implant surgical template. *The Journal of Advanced Prosthodontics* 2014; 6 (5): 395-405.
23. Yeung AW K, Jacobs R, & Bornstein, MM. Novel low-dose protocols using cone beam computed tomography in dental medicine: a review focusing on indications, limitations, and future possibilities. *Clinical Oral Investigations*. 2019; 23 (6): 2573-2581.