

Clinical And Virological Characteristics Of Dengue In Surabaya, Indonesia

by Muhammad Vitanata Arfijanto

Submission date: 08-May-2023 09:56AM (UTC+0800)

Submission ID: 2086975803

File name: Virological_Characteristics_Of_Dengue_In_Surabaya,_Indonesia.pdf (6.04M)

Word count: 10459

Character count: 53467

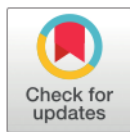
RESEARCH ARTICLE

Clinical and virological characteristics of dengue in Surabaya, Indonesia

Puspa Wardhani^{1,2}, Aryati Aryati^{1,2}, Benediktus Yohan³, Hidayat Trimarsanto³, Tri Y. Setianingsih³, Dwiyantri Puspitasari⁴, Muhammad Vitanata Arfijanto⁵, Bramantono Bramantono⁵, Suharto Suharto⁵, R. Tedjo Sasmono^{3*}

1 Department of Clinical Pathology, School of Medicine, Universitas Airlangga, Surabaya, Indonesia, **2** Institute for Tropical Diseases, Universitas Airlangga, Surabaya, Indonesia, **3** Eijkman Institute for Molecular Biology, Jakarta, Indonesia, **4** Department of Pediatric, School of Medicine, Universitas Airlangga, Surabaya, Indonesia, **5** Department of Internal Medicine, School of Medicine, Universitas Airlangga, Surabaya, Indonesia

* sasmono@eijkman.go.id



Abstract

Dengue disease is still a major health problem in Indonesia. Surabaya, the second largest city in the country, is endemic for dengue. We report here on dengue disease in Surabaya, investigating the clinical manifestations, the distribution of dengue virus (DENV) serotypes, and the relationships between clinical manifestations and the genetic characteristics of DENV. A total of 148 patients suspected of having dengue were recruited during February–August 2012. One hundred one (68%) of them were children, and 47 (32%) were adults. Dengue fever (DF) and Dengue hemorrhagic fever (DHF) were equally manifested in all of the patients. We performed DENV serotyping on all of the samples using real-time RT-PCR. Of 148, 79 (53%) samples were detected as DENV positive, with DENV-1 as the predominant serotype (73%), followed by DENV-2 (8%), DENV-4 (8%), and DENV-3 (6%), while 5% were mixed infections. Based on the Envelope gene sequences, we performed phylogenetic analyses of 24 isolates to genotype the DENV circulating in Surabaya in 2012, and the analysis revealed that DENV-1 consisted of Genotypes I and IV, DENV-2 was of the Cosmopolitan genotype, the DENV-3 viruses were of Genotype I, and DENV-4 was detected as Genotype II. We correlated the infecting DENV serotypes with clinical manifestations and laboratory parameters; however, no significant correlations were found. Amino acid analysis of Envelope protein did not find any unique mutations related to disease severity.

OPEN ACCESS

Citation: Wardhani P, Aryati A, Yohan B, Trimarsanto H, Setianingsih TY, Puspitasari D, et al. (2017) Clinical and virological characteristics of dengue in Surabaya, Indonesia. PLoS ONE 12(6): e0178443. <https://doi.org/10.1371/journal.pone.0178443>

Editor: Ulrike Gertrud Munderloh, University of Minnesota, UNITED STATES

Received: October 23, 2016

Accepted: May 12, 2017

Published: June 2, 2017

Copyright: © 2017 Wardhani et al. This is an open access article distributed under the terms of the [Creative Commons Attribution License](https://creativecommons.org/licenses/by/4.0/), which permits unrestricted use, distribution, and reproduction in any medium, provided the original author and source are credited.

Data Availability Statement: All relevant data are within the paper and its Supporting Information files.

Funding: This study was partly funded by PHKI and SINAS 2012 grants from the Ministry of Research, Technology, and Higher Education of the Republic of Indonesia to AA and RTS. The funder had no role in study design, data collection and analysis, decision to publish, or preparation of the manuscript.

Introduction

Dengue is a self-limited, systemic viral infection caused by dengue virus (DENV), a member of the Flaviviridae family. Dengue poses a significant public health challenges, with a global burden of an estimated 390 million infections per year occur across approximately 128 countries, with the potential for further spread [1–3]. Four DENV serotypes (DENV-1, -2, -3, and -4) circulate in tropical and subtropical regions of the world and are transmitted by *Aedes* mosquitoes as the vector [4].

75
Competing interests: The authors have declared that no competing interests exist.

3 **9**
The clinical manifestations of dengue range from asymptomatic or a mild flu-like syndrome known as classic Dengue fever (DF), to a more severe form known as dengue hemorrhagic fever (DHF) and the potentially fatal dengue shock syndrome (DSS) [5,6]. DF generally characterized by acute febrile illness, often accompanied with severe headache, myalgia, arthralgia, rashes, leukopenia and thrombocytopenia. Unusual haemorrhage such as gastrointestinal bleeding, hypermenorrhoea and massive epistaxis sometimes occur [6]. In DHF, the signs and symptoms during the early febrile phase are similar to those in DF. The distinct feature of DHF is the increase in vascular permeability (plasma leakage) that differentiates DHF from DF [6]. By the end of the febrile phase, DSS may occur, which is characterized by hypovolemic shock due to plasma leakage. Unusual manifestations (or expanded dengue syndrome) have been increasingly reported with involvement of severe organ impairment such as liver, kidneys, brain or heart. These may be associated with coinfections, comorbidities or complications of prolonged shock [6].

The DENV genome consists of a ~10.7 kb single-stranded positive-sense RNA genome encoding 3 structural (C, prM/M, E) and 7 non-structural (NS1, NS2A, NS2B, NS3, NS4A, NS4B, NS5) proteins [7]. DENV has very diverse genetic characteristics. The four antigenically-related serotypes differ by ~25–40% at the amino acid levels. Within each serotype, there are several clusters of variants termed as genotypes which vary by ~6% and 3% at the nucleotide and amino acid levels, respectively [8,9].

Dengue severity has been correlated with viral genetics. All four of the serotypes of DENV can cause severe and fatal disease, although DENV-2 and DENV-3 have been more associated with severe disease [10–13]. In Indonesia, all four of the DENV serotypes are circulating, with the tendency of DENV-3 related to severe diseases [14,15]. However, due to the limited serotype data available in Indonesia, it is possible that other serotypes also contribute to the severity of the disease.

Surabaya and Jakarta were the cities where dengue disease was first reported in Indonesia in 1968 [16]. Currently, all 34 provinces of Indonesia have reported dengue cases [14]. Dengue disease is quite common in urban areas in Indonesia, and it occurs annually, while periodic major outbreaks have occurred, such as those reported in 1998 [17] and 2004 [15]. In 2011, the East Java Provincial Health Office reported 1,008 dengue cases in Surabaya (incidence rate 36/100,000) with a case fatality rate of 0.70%. Although dengue in Surabaya has been reported [18,19], the clinical aspects of the disease and its correlation with virological factors have never been reported. Our study described the clinical features of dengue disease in Surabaya, combined with molecular analysis of DENV.

Materials and methods

Patient recruitment, sample collection and clinical and laboratory examinations

This cross-sectional study was performed from February to August 2012 in Surabaya, the capital city of East Java province, Indonesia. Surabaya is the second largest city in Indonesia; it covers an area of approximately 333,063 km² and is inhabited by roughly 3 million people. Patients suspected of having dengue with fever >38°C accompanied by at least one of the symptoms of dengue such as headache, rash, arthralgia, retro-orbital pain, malaise, signs of DHF or DSS, presenting at the Dr. Soetomo Central Hospital were invited to participate in the study and were enrolled upon obtaining written consent. Consent for minors was obtained from parents or legal guardians. Ethical clearance for this study was obtained from Airlangga University Medical Research Ethics Committee. Sera from dengue-suspected patients were collected during the 3–5 days of fever and subjected to serology tests and dengue antigen

detection. Anti-dengue IgG and IgM detections were performed using Panbio Dengue Duo IgM and IgG Capture ELISA (Alere, Brisbane, Australia), which was also used to determine the infection status (primary or secondary infection) according to manufacturer's protocol. Briefly, a positive IgM result (> 11 of Panbio units) was indicative of active primary or secondary infection. An IgG-positive result (> 22 Panbio units) was indicative of active secondary infection. Primary infection was determined by positive IgM (> 11 Panbio units) and negative IgG (< 22 Panbio units), while secondary infection was determined by positive IgG (> 22 Panbio units), which could be accompanied by elevated IgM levels. Detection of DENV NS1 antigen detection was performed using a Panbio Dengue Early Rapid kit (Alere), according to the manufacturer's instructions. All of the patients underwent examination 2–4 times of complete blood count, aspartate aminotransferase (AST), alanine transaminase (ALT), and albumin. Occurrences of hepatomegaly, splenomegaly, ascites, pleural effusion and perinephric fluid were examined using ultrasonographic methods. Classification of the clinical manifestations of dengue was based on the WHO SEARO 2011 dengue guideline [6] and we categorized patients <15 years as children [6].

RNA extraction and reverse transcriptase-polymerase chain reaction (RT-PCR)

Virus RNA was extracted from serum samples using a MagNA Pure LC Total Nucleic Acid Isolation Kit and automated MagNA Pure LC 2.0 Instrument (Roche, Mannheim, Germany), according to manufacturer's instructions. DENV nucleic acid detection and serotyping were performed using Simplexa™ Dengue Molecular Assay quantitative real-time RT-PCR [20] performed in a 3M Integrated Cycler machine (Focus Diagnostic, Cypress, CA, USA). Detailed methods for the Simplexa™ Dengue Molecular Assay were as described by the manufacturer.

DENV genome copy number determination

Virus copy number examination was performed to quantify the numbers of DENV genome copy numbers in the sera of patients during the 3–5 days of fever. The quantitative real-time RT-PCR (qRT-PCR) was based on conventional two step PCR used for the detection of DENV [21]. Virus RNA was reverse-transcribed into cDNA and used in subsequent quantitative PCR steps with a Power SYBR Green PCR kit and an ABI 7500 machine (Applied Biosystems, Foster City, CA). A recombinant plasmid harboring DENV structural genes (C, prM/M, E) was generated using a Zero Blunt TOPO PCR Cloning kit (Invitrogen-Life Technologies, Carlsbad, CA, USA) and was serially diluted into known concentrations of the plasmid-cloned dengue genome and used as the genome copy number standard.

Virus isolation using cell culture

The C6/36 cell line was used in virus isolation from RT-PCR-positive sera. A monolayer of cells was inoculated with 200 µl of sera in 2 ml of 1X RPMI medium supplemented with 2% of FBS, 2 mM of L-glutamine, 100 U/ml of penicillin, and 100 µg/ml of streptomycin (all from Gibco-Life Technologies, Carlsbad, CA, USA). Flasks were incubated for 1 hour at 28°C to allow for virus attachment. Following the incubation period, the inoculation medium was discarded and replenished with 3 ml of fresh medium. Infected cells were incubated at 28°C for 14 days.

DENV genotyping

The genotyping of DENV was performed based on the Envelope (E) gene sequence. DENV RNAs were extracted from tissue-culture supernatant and were reverse-transcribed into cDNA using Superscript III reverse transcriptase (RT) (Invitrogen-Life Technologies) and DENV-specific primers. PCR amplifications were then performed using *Pfu* Turbo DNA Polymerase (Stratagene-Agilent Technologies, La Jolla, CA, USA). PCR products were purified from 0.8% agarose gel using a QIAquick gel extraction kit (Qiagen, Hilden, Germany) and were used in cycle sequencing reactions, performed using 6 overlapping primers from both strands and BigDye Dideoxy Terminator sequencing kits, version 3.1 (Applied Biosystems), according to the methods described by the manufacturer. DNA sequencing was performed on 3130xl genetic analyzer (Applied Biosystems) at the Eijkman Institute sequencing facility. The primers used in genotyping were described previously [22]. The resulting sequence reads were assembled using SeqScape, version 2.5 (Applied Biosystems), with additional manual adjustment performed when manual inspection of the assembly showed some discrepancies. The obtained E gene sequences have been deposited in GenBank (Table 5). Sequence alignment and initial dataset preparation were undertaken using MEGA software, version 5.0 [23]. Multiple sequence alignment was performed using MUSCLE [24] to generate sequence alignment representing the E protein segment. A dataset for each serotype was prepared using BEAUti, version 1.8.2, [25] followed by phylogenetic reconstruction and evolutionary rate analysis using Bayesian Markov chain Monte Carlo (MCMC) methods, as implemented in BEAST, version 1.8.2, [26] using a GTR+ Γ_4 model with invariant sites, a relaxed uncorrelated lognormal molecular clock and prior Bayesian skyline, with 100 million generations sampled for every 1,000th iteration. MCMC traces were analyzed using Tracer, version 1.5.0, and optimization was applied to obtain an adequate effective sampling size (ESS) for all parameters. A maximum clade credibility (MCC) tree was created using TreeAnnotator, version 1.8.2, and was visualized in FigTree, version 1.4.0, which are available with the BEAST package. Genotyping was based on classifications by Goncalvez et al. [27], Twiddy et al. [28], Lanciotti et al. [29] and Lanciotti et al. [30] for DENV-1, -2, -3 and -4, respectively.

Statistical analysis

Statistical analysis was performed using SPSS Statistics software, version 17.0 (SPSS Inc., Chicago, IL), and R statistical software (<http://www.r-project.org>). The significance of factors influencing disease severity were assessed using generalized logistic regression as implemented in *rms* library from R statistical software. A probability value of $p < 0.05$ was considered statistically significant.

Results

Patients' characteristics and clinical manifestations

We recruited 148 dengue-suspected patients in this study after informed consent was obtained. From February to August 2012, the highest number of suspected dengue cases occurred in April and then decreased gradually (Fig 1A). Of the 148 patients, 101 (68%) of them were children (< 15 y.o.), and 47 (32%) were adults. Patients' ages ranged from 0 to 60 y.o. Most of the dengue cases reported in this study occurred in children younger than 10 y.o. (Fig 1B). In terms of sex, 70 (47%) patients were male, and 78 (53%) patients were female (Table 1). The clinical manifestations of the patients, grouped according to the WHO-SEARO 2011 guideline [6], were as described in Table 1, in which most of the patients equally manifested as either DF or DHF (68 patients or 46% each). We also observed the presence of undifferentiated fever and

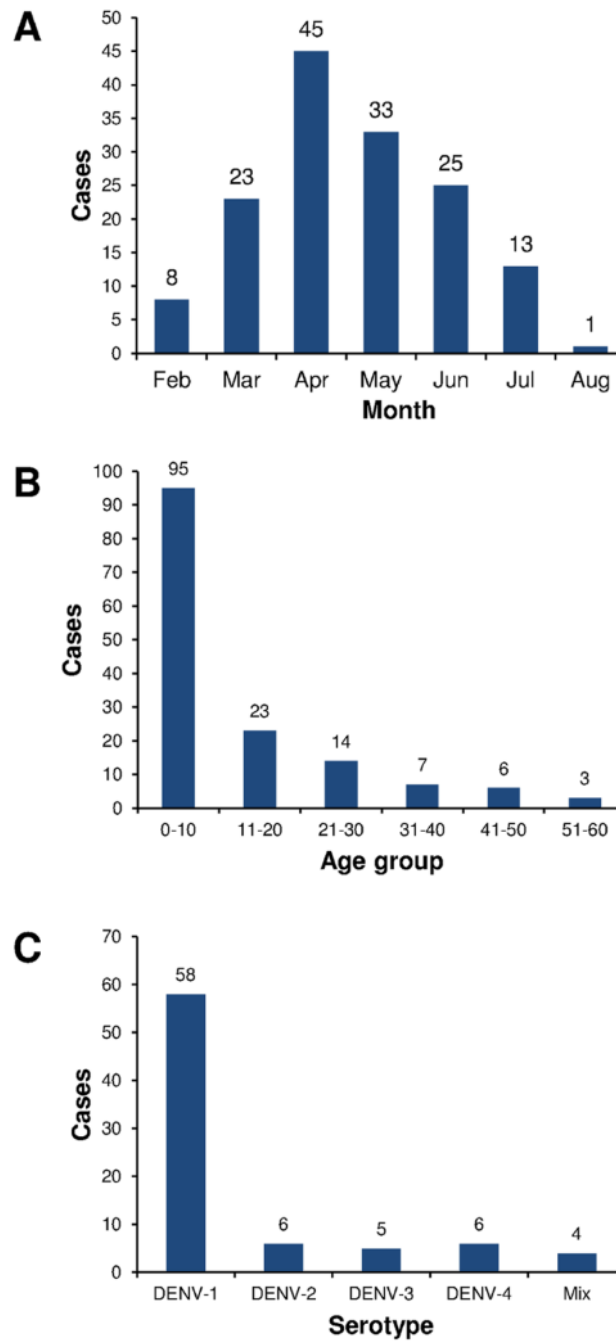


Fig 1. Dengue cases by monthly distribution (A), patients' ages (B), and DENV serotype distribution (C) in Surabaya during 2012.

<https://doi.org/10.1371/journal.pone.0178443.g001>

Table 1. Characteristics of dengue-suspected patients in Surabaya.

Characteristics (n = 148)	N	Percentage (%)
Sex		
Male	70	47
Female	78	53
Age grouping*		
Children	101	68
Adult	47	32
Diagnosis		
Undifferentiated Fever	8	5
Dengue Fever	68	46
Dengue Hemorrhagic Fever	68	46
Expanded Dengue Syndrome	4	3
RT-PCR detection		
Positive	79	53
Negative	69	47

*Age grouping based on children < 15 y.o.

<https://doi.org/10.1371/journal.pone.0178443.t001>

expanded dengue syndrome among the patients (Table 1). The four patients with expanded dengue syndrome were all children with febrile seizures.

DENV serotype distribution in Surabaya

DENV molecular detection and serotyping were performed in all 148 collected sera. Of these sera, RT-PCR detection was positive in 79 samples (53%). Serotyping revealed the predominance of DENV-1, which accounted for 58 cases or 73%, followed by DENV-2 and DENV-4 (6 cases each or 8%) and then by DENV-3 (5 cases or 6%) (Fig 1C). The remainder of the confirmed dengue cases were detected as mixed infection of DENV-1 and -2 (1 case), DENV-1 and -3 (2 cases), and DENV-1 and -4 (1 case) (Fig 1C).

Clinical features and laboratory examinations

Of the 79 dengue-confirmed patients, 67 patients had complete clinical and laboratory data. The age distribution of the patients was not equal between children and adults. The literature reported that patient age is one of the factors influencing the clinical presentation of dengue [31]. To analyze the clinical features and laboratory parameters, we grouped our patients into children (n = 48) and adults (n = 19). Significant differences in clinical/laboratory parameters were observed in the children. As expected, severity markers such as hematocrit, thrombocytes, liver enzymes and albumin were more prominent in DHF pediatric patients. Hematocrit was higher in DHF patients, as well as the AST and ALT enzymes. The platelet counts were significantly lower in the DHF group. Plasma leakage markers, such as gall bladder wall edema, ascites, and pleural effusion, were also observed in children with DHF (Table 2). Similarly, DHF occurred more as a secondary infection in children. In adult patients, less prominent markers of severity were observed. Only thrombocytopenia and pleural effusion were readily observed in DHF (Table 3). Unlike in children, viremia was significantly higher in adult DHF patients (Table 3). Other clinical/laboratory parameters were not significantly different in adult patients between DF and DHF (Table 3).

Table 2. Characteristics of dengue-confirmed children (n = 48).

Parameter	DF (n = 17)	DHF (n = 31)	P
Average Length of Stay (days)	3.7 ±1.3	4.2±0.8	0.449
Virus Titer (genome copy eq./μL)	262.5 ±314.9	2262.5±7781.9	0.207
Hemoglobin (g/dL)	12.3±1.3	13.5±1.4	0.008*
RBC count (x 10 ⁶ / μL)	4.8±0.58	5.3±0.7	0.016*
Hematocrit (%)	37.7±3.6	40.5±4.1	0.019*
MCV	78.4±4.8	76.3.1±6.3	0.249
MCH	25.8±1.7	25.6±2.2	0.923
MCHC	32.8±1.1	32.6±5.5	0.031*
WBC count (x 10 ³ / μL)	3.7±1.6	3.8±2.1	0.582
% Eosinophils	1.7±1.9	0.8±1.4	0.040*
% Basophils	1.2±1.2	1.5±1.5	0.589
% Neutrophils	32.0±16.4	50.9±78.7	0.232
% Lymphocytes	53.5±16.4	47.2±11.9	0.178
% Monocyte	10.8±4.1	13.1±5.1	0.106
Thrombocytes (x 10 ³ / μL)	73.1±42.7	43.3±31.5	0.003*
AST (IU/dL)	92.2±39.8	206.31±194.6	0.000*
ALT (IU/dL)	37.2±29.3	74.8±70.3	0.001*
Albumin (g/dL)	3.3±0.4	2.7±0.6	0.000*
Secondary infection	9/17(52.9%)	26/31 (83.8%)	0.039*
NS1 antigen positive	7/17(41.2%)	12/31(38.7%)	0.867
Hepatomegaly	2/17 (11.7%)	10/31(32.3%)	0.169
Gall bladder wall edema	3/17 (17.6%)	23/31 (74.3%)	0.000*
Splenomegaly	2/17 (11.7%)	1/31 (3.2%)	0.248
Perinephric fluid	0/17 (0%)	4/31 (12.9%)	0.282
Ascites	0/17 (0%)	19/31 (61.3%)	0.000*
Pleural Effusion	0/17 (0%)	24/31 (77.4%)	0.000*

MCH, mean corpuscular hemoglobin; MCV, mean corpuscular volume; MCHC, mean corpuscular hemoglobin concentration; AST, aspartate transaminase; ALT, alanine transaminase.

*Statistically significant

<https://doi.org/10.1371/journal.pone.0178443.t002>

Correlations of DENV serotypes/genotypes with clinical manifestations and laboratory parameters

Different DENV serotypes have been reported to cause different clinical manifestations and disease severity. In regard to this fact, we sought to determine whether each DENV serotype was correlated with the clinical and laboratory data of the patients. In all of the patients with the infecting DENV serotypes determined, we did not observe any significant difference in clinical/laboratory data except for lymphocyte counts (Table 4). We observed a relatively higher lymphocyte number in patients infected by DENV-1, compared to other serotypes. The severity of the disease, which was grouped into DF and DHF, was not significantly different among serotypes. However, in all of the serotypes, the numbers of DHF cases were higher compared to DF cases (Table 4). Additionally, ANOVA test on logistic regression of disease severity with NS1 antigen detection, infection status, DENV serotype, age, and sex as cofactors indicated that the general influential factor in determining the disease severity was the infection status ($p = 0.021$, S1 Table).

Table 3. Characteristics of dengue-confirmed adult patients (n = 19).

Parameter	DF (n = 9)	DHF (n = 10)	p
Average Length of Stay (days)	4.4 ±1.3	5.9±1.5	0.403
Virus Titer (genome copy eq./μL)	202.5 ±164.1	324,770±9.08e5	0.034*
Hemoglobin (g/dL)	13.2±1.8	14.5±1.64	0.008
RBC count (x 10 ⁶ /μL)	4.6±0.6	5.0±0.7	0.165
Hematocrit (%)	39.2±5.1	42.3±5.1	0.142
MCV	86.1±5.9	84.7±3.9	0.249
MCH	28.4±1.3	28.5±1.1	0.153
MCHC	33.4±0.9	33.5±1.5	0.806
WBC count (x 10 ³ /μL)	3.6±1.4	3.4±1.7	0.514
% Eosinophils	1.8±2.4	0.45±1.1	0.084
% Basophils	1.6±1.9	0.9±0.8	0.870
% Neutrophils	45.9±21.3	56.9±16.8	0.288
% Lymphocytes	37.2±16.9	31.6±14.8	0.514
% Monocytes	13.4±4.9	10.1±4.8	0.191
Thrombocytes (x 10 ³ /μL)	82.0±34.2	37.7±29.1	0.013*
AST (IU/dL)	101.0±34.3	139.8±81.9	0.414
ALT (IU/dL)	87.1±39.7	75.8±60.8	0.327
Albumin (g/dL)	3.5±0.3	3.2±0.56	0.093
Secondary infection	8/9(88.8%)	8/10(80%)	1.000
NS1 antigen positive	6/9(66.6%)	6/10(60%)	1.000
Hepatomegaly	2/9 (22.2%)	2/10 (20%)	1.000
Gall bladder wall edema	1/9 (11.1%)	5/10 (50%)	0.141
Splenomegaly	0/9 (0%)	0/10 (0%)	N/A
Perinephric fluid	0/9 (0%)	1/10 (10%)	1.000
Ascites	0/9 (0%)	4/10 (40%)	0.303
Pleural Effusion	0/9 (0%)	5/10 (50%)	0.022*

*Statistically significant

<https://doi.org/10.1371/journal.pone.0178443.t003>

We also analyzed the correlation between two genotypes of DENV-1 (described below) with clinical manifestations and laboratory parameters, however, no statistically significant correlation was found (data not shown).

Phylogenetic analyses and DENV genotype distribution

To study the genetic diversity of the DENV, we performed genotyping of 24 DENV isolates, representing all of the serotypes, using the Envelope gene sequences for phylogenetic analysis. We also included five Surabaya DENV isolates collected in 2010 as references (Table 5). Of the 58 DENV-1 positive samples, we managed to sequence the Envelope genes of 19 virus isolates. Based on the DENV-1 genotype classification by Goncalvez et al [27], we observed the circulation of two genotypes of DENV-1 in Surabaya. The majority of isolates (14 isolates) were grouped into Genotype I, while the remainder (5 isolates) were grouped into Genotype IV (Fig 2).

For DENV-2, the isolate was classified as the Cosmopolitan genotype (Fig 3), according to Twiddy et al's [28] classification. Using this classification tree, the isolate was grouped together with DENV-2 isolates from other cities in Indonesia (Bali and Palembang). Further analysis of the Cosmopolitan genotype of DENV-2, using sets of sequences from Indonesia from recent

Table 4. Clinical and laboratory parameters of patients grouped according to infecting serotypes.

Parameter	DENV-1 (n = 48)	DENV-2 (n = 6)	DENV-3 (n = 5)	DENV-4 (n = 6)	Mix (n = 2)	p value
<i>Severity (%)</i>						0.775 ^a
DF	16 (33.3)	1 (16.7)	2 (40.0)	2 (33.3)	0 (0.0)	
DHF	32 (66.7)	5 (83.3)	3 (60.0)	4 (66.7)	2 (100)	
<i>Infection status (%)</i>						0.205 ^a
Primary infection	16 (33.3)	1 (16.7)	0 (0.0)	0 (0.0)	1 (50.0)	
Secondary infection	32 (66.7)	5 (83.3)	5 (100)	6 (100)	1 (50.0)	
<i>Antigen detection (%)</i>						0.211 ^a
NS1 antigen-positive	31 (64.6)	3 (50.0)	2 (40.0)	1 (16.7)	1 (50.0)	
NS1 antigen-negative	17 (35.4)	3 (50.0)	3 (60.0)	5 (83.3)	1 (50.0)	
<i>Viral load^c (mean ± SD)</i>	1502.2±6221.9	205.7±221.1 ^d	189.8±89.0	362.1±238.3	N/A	0.909 ^b
<i>Laboratory test (mean ± SD)</i>						
HB (g/dL)	12.90±1.5	11.62±1.0	12.48±0.9	13.07±1.1	10.80±2.4	0.090 ^b
WBC (x10 ³ /μL)	4.22±2.2	7.17±4.6	2.92±0.6	4.45±2.1	3.58±1.6	0.118 ^{b*}
Lymphocyte (%)	49.19±16.6	36.24±21.7	33.30±20.5	36.00±6.9	26.65±15.9	0.035^b
Hematocrit (%)	38.44±4.4	35.03±3.1	38.04±3.1	39.38±3.4	32.10±7.1	0.100 ^b
Platelet (x10 ³ /μL)	80.45±52.3	72.98±43.7	91.40±33.8	97.50±64.0	79.00±31.1	0.917 ^b
AST (IU/dL)	135.05±115.0	107.67±58.6	111.40±61.6	80.33±81.9	568.50±733.3	0.137 ^{b*}
ALT (IU/dL)	51.10±45.5	71.83±56.8	42.20±19.7	44.33±29.0	148.50±177.5	0.586 ^{b*}
Albumin (g/dL)	3.30±0.5	3.13±0.8	3.42±0.5	3.57±0.6	3.25±0.4	0.745 ^b
<i>USG examination (%)</i>						
Hepatomegaly	17 (35.4)	2 (33.3)	1 (20.0)	3 (50.0)	1 (50.0)	0.856 ^a
Gall Bladder Wall Edema	22 (45.8)	3 (50.0)	3 (60.0)	1 (16.7)	0 (0.0)	0.448 ^a
Splenomegaly	6 (12.5)	1 (16.7)	0 (0.0)	0 (0.0)	1 (50.0)	0.518 ^a
Perinephric Fluid	3 (6.3)	1 (16.7)	0 (0.0)	0 (0.0)	0 (0.0)	0.786 ^a
Ascites	15 (31.3)	3 (50.0)	2 (40.0)	0 (0.0)	1 (50.0)	0.524 ^a
Pleural Effusion	21 (43.8)	3 (50.0)	3 (60.0)	3 (50.0)	0 (0.0)	0.757 ^a

^a Pearson's Chi-Square test

^b One-way ANOVA test

^c Viral genome copy number Equivalent/μL

^d One outlier was excluded from calculation

N/A: not applicable

* Statistical analysis was performed using Log₁₀-transformed data to generate equal variances among groups.

<https://doi.org/10.1371/journal.pone.0178443.t004>

years, revealed that the Surabaya 2012 isolate was grouped into the Surabaya lineage of the Cosmopolitan subclade, as proposed by Kotaki, et al. [32] (data not shown). The isolate is closely related to an isolate of imported DENV from Indonesia in Taiwan in 2007 [33], and it shares common ancestors with isolates from Bali, Singapore, and Surabaya in 2011.

The genotypes of DENV-3 isolates were classified as Genotype I according to Lanciotti et al [29]. These DENV-3 isolates apparently formed two separate clusters within Genotype I. However, in each cluster, the 2012 isolates grouped together with other isolates from Surabaya and other location in Indonesia, such as Jakarta (2004) and Bali (2010), as well as the recent Surabaya 2013 isolates. The Taiwan isolate from an imported case in Indonesia also clustered together with the Surabaya 2012 isolates (Fig 4).

We managed to sequence one DENV-4 isolate and performed phylogenetic analysis based on Lanciotti et al's classification [34] to determine the genotype. As shown in Fig 5, the isolate

Table 5. Surabaya DENV isolates with their Envelope genes sequenced.

No	Isolate ID	Serotype	Genotype	Clinical Manifestation	GenBank Accession No.
1.	SUB-003A	DENV-1	I	DHF	KT204436
2.	SUB-026A	DENV-1	IV	DHF	KT204437
3.	SUB-027A	DENV-1	I	DHF	KT204438
4.	SUB-032A	DENV-1	IV	DHF	KT204439
5.	SUB-048A	DENV-1	I	DHF	KT204440
6.	SUB-088A	DENV-1	I	DF	KT204441
7.	SUB-098A	DENV-1	I	DF	KT204442
8.	SUB-100A	DENV-1	I	DHF	KT204443
9.	SUB-103A	DENV-1	IV	DF	KT204444
10.	SUB-104A	DENV-1	I	DHF	KT204445
11.	SUB-120A	DENV-1	I	DF	KT204446
12.	SUB-126A	DENV-1	IV	DHF	KT204447
13.	SUB-138A	DENV-1	I	DF	KT204448
14.	SUB-N004	DENV-1	I	DF	KT204449
15.	SUB-117A	DENV-1	I	DHF	KT204450
16.	SUB-141A	DENV-1	I	DHF	KT204451
17.	SUB-038A	DENV-1	I	DF	KT204452
18.	SUB-049A	DENV-1	IV	DHF	KT204453
19.	SUB-043A	DENV-1	I	DHF	KT204454
20.	SUB-019A	DENV-2	Cosmopolitan	DHF	KT204455
21.	SUB-083A	DENV-3	I	DF	KT204456
22.	SUB-114A	DENV-3	I	DHF	KT204457
23.	SUB-124A	DENV-3	I	DF	KT204458
24.	SUB-022A	DENV-4	II	DHF	KT204459
25.	SUB-0025	DENV-1	I	N/A	KT204460
26.	SUB-0026	DENV-1	IV	N/A	KT204461
27.	SUB-0027	DENV-3	I	N/A	KT204462
28.	SUB-0030	DENV-3	I	N/A	KT204463
29.	SUB-0007	DENV-4	II	N/A	KT204464

Note: N/A: data not available; the last 5 isolates were collected in 2010

<https://doi.org/10.1371/journal.pone.0178443.t005>

from Surabaya was classified as Genotype II, and it clustered together with isolates from other locations in Indonesia, such as from Sukabumi [35], Bali [36], and Makassar [22].

Envelope gene amino acid analysis

With the available E gene DNA sequences obtained in this study, we analyzed the amino acid (AA) sequences of the E glycoprotein of 19 DENV-1 isolates to determine whether there is an AA substitution uniquely related to the disease severity. As shown in Fig 6, there were 25 of 495 (5%) AAs that were variable within the 19 isolates. Notably, there was a clear difference in AA sequences between Genotype I and Genotype IV isolates (Fig 6). The substitutions of AAs were mostly conservative, such as threonine to serine and isoleucine to valine substitutions (Fig 6). The AA substitutions apparently randomly occurred in isolates associated with both DF and DSS. We did not observe any unique AA substitution(s) related to disease severity. Because only a small number isolates were sequenced for DENV-2, -3, and -4, we did not perform AA comparisons.

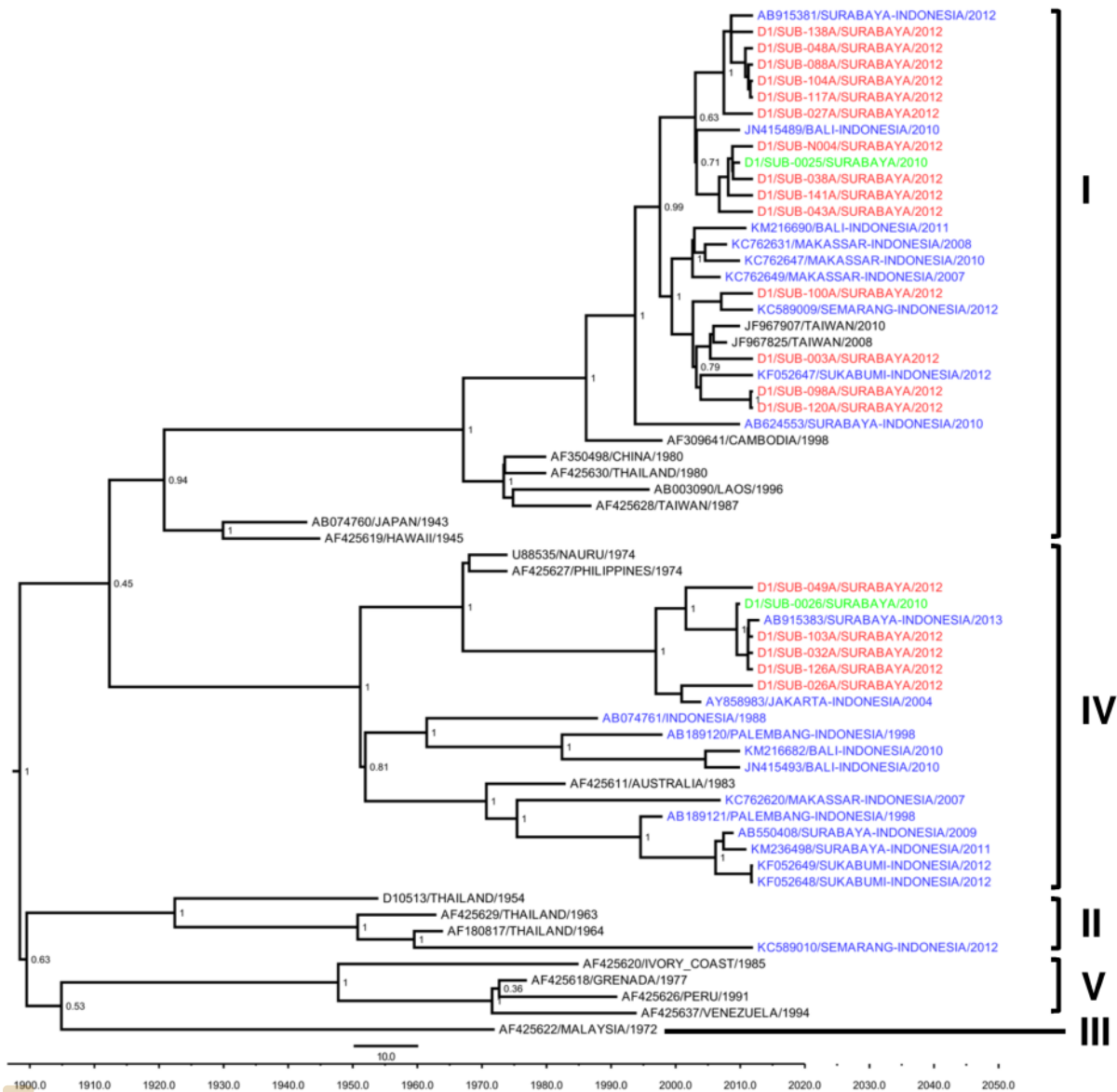


Fig 2. Maximum clade credibility (MCC) tree of DENV-1 genotype groupings generated by Bayesian inference method as implemented in BEAST using the GTR evolution model and gamma parameter rates from the E gene sequences. The Surabaya 2012 isolates (red font) were grouped into Genotype I and Genotype IV based on classification by Goncalvez et al [27], together with isolates from Surabaya 2010 (green font) and other cities in Indonesia (blue font). The posterior probabilities of the clades are indicated as numbers in the node labels.

<https://doi.org/10.1371/journal.pone.0178443.g002>

Discussion

We reported here the clinical observations and virological features of dengue in Surabaya. During the study, we recruited 148 dengue-suspected patients. In Surabaya, dengue cases occurred throughout the months of February through August 2012, with cases peaking in

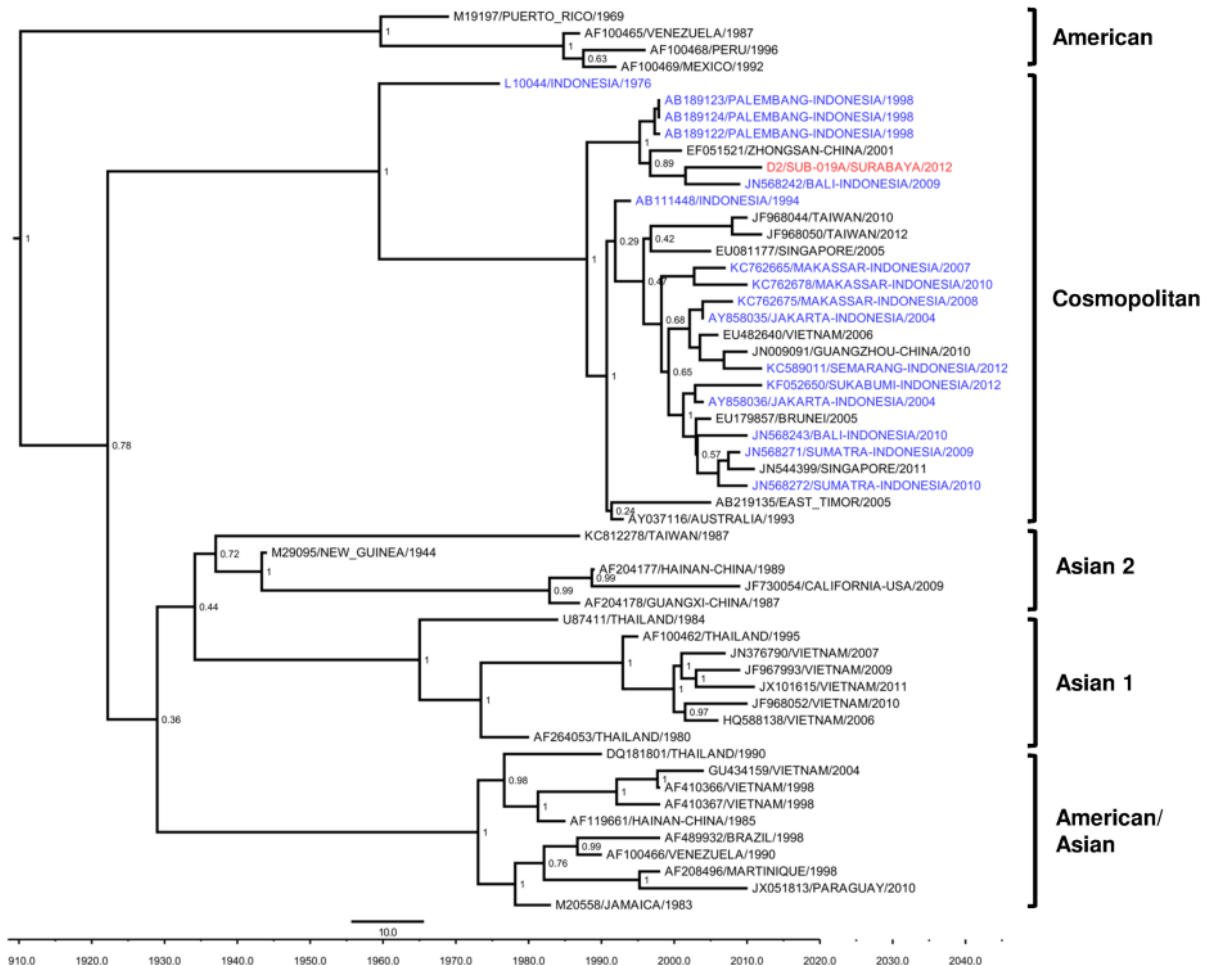


Fig 3. MCC tree of DENV-2 genotype groupings generated by Bayesian inference method as implemented in BEAST using the GTR evolution model and gamma parameter rates from the E gene sequences. The Surabaya 2012 isolate (red font) was grouped into Cosmopolitan Genotypes based on classification by Twiddy et al [28], together with isolates from other cities in Indonesia (blue font). The posterior probabilities of the clades are indicated as numbers in the node labels.

<https://doi.org/10.1371/journal.pone.0178443.g003>

April (Fig 1A). High dengue incidence in April-May is typically observed in Indonesia, especially in large cities such as Jakarta, Surabaya, and Bandung [37].

The majority of patients (68%) were children younger than 15 years old. This finding was also similar to dengue cases described earlier in Indonesia, i.e., in Jayapura in 1993 [38], Palembang in 1998 [17], and Semarang in 2012 [39], but different from what we reported previously in Sukabumi in 2012 [35] and Makassar in 2007–2010 [22], in which most of the cases occurred in adolescent and adult patients. The fact that more children patients observed in Surabaya was not align with the tendency of dengue incidence shifting from young children to older age groups in Indonesia [40].

In our study, within all of the age groups, we observed more female than male dengue patients (Table 1). However, in adult patients, more dengue incidents in men were observed.

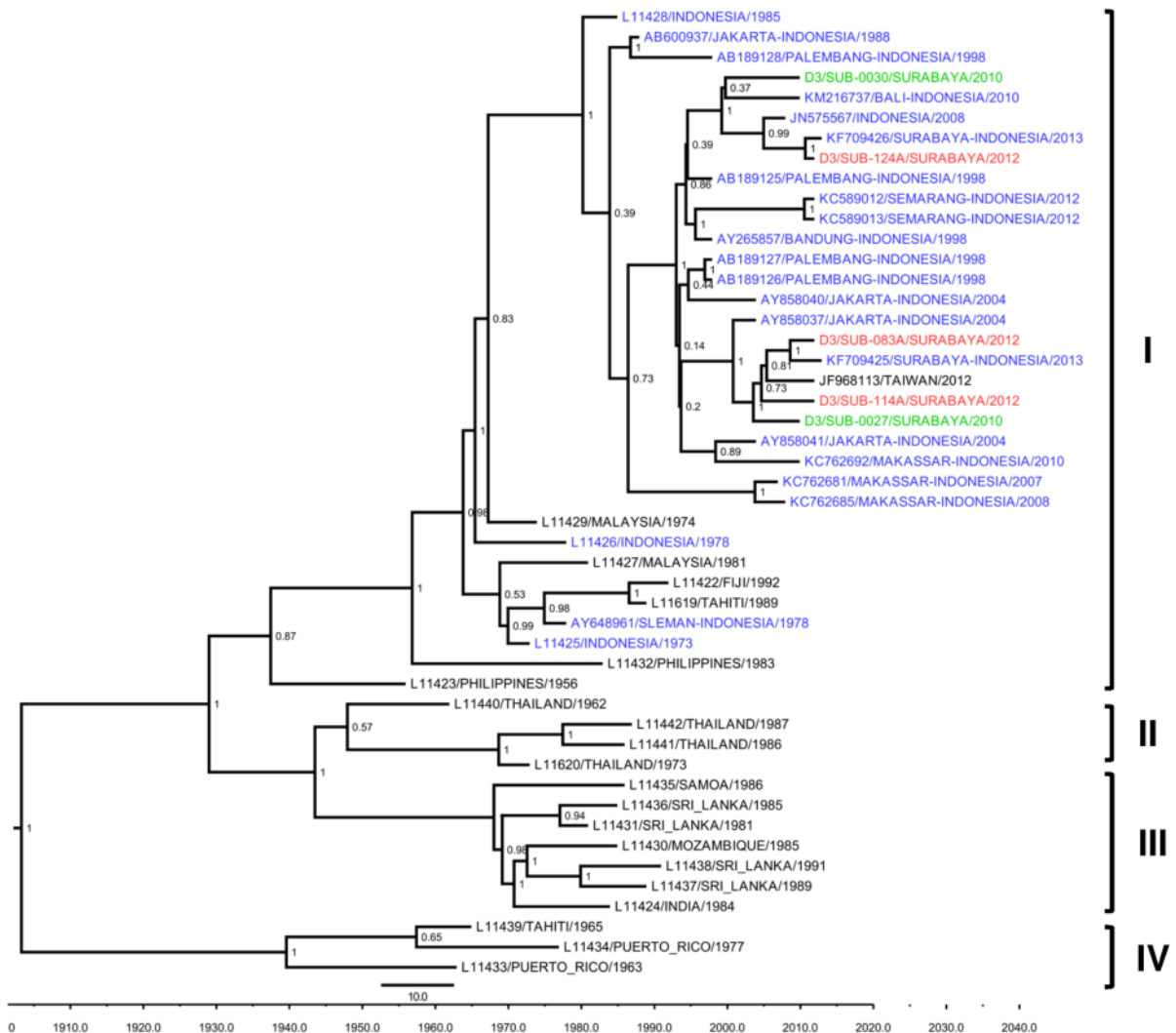


Fig 4. MCC tree of DENV-3 genotype groupings generated by Bayesian inference method as implemented in BEAST using GTR evolution model and gamma parameter rates from the E gene sequences. The Surabaya 2012 isolates (red font) were grouped into Genotype I based on classification by Lanciotti et al [29], together with isolates from Surabaya 2010 (green font) and other cities in Indonesia (blue font). The posterior probabilities of the clades are indicated as numbers in the node labels.

<https://doi.org/10.1371/journal.pone.0178443.g004>

These data are in accordance with reports from six countries in Asia that consistently observed the predominance of male dengue patients [41]. Although more study is needed to confirm the cause, it is possible that, in Surabaya, adult men have greater exposure to dengue-carrying mosquitoes at workplaces or while travelling to and from work.

Our DENV serotyping of Surabaya samples in 2012 revealed the circulation of all four dengue serotypes, with DENV-1 predominantly circulating in the region, while quite similar numbers for DENV-2; -3; and -4 were observed (Fig 1C). This result was different from previous reports, which described only DENV-1 and DENV-2 being found in Surabaya in 2012 [18].

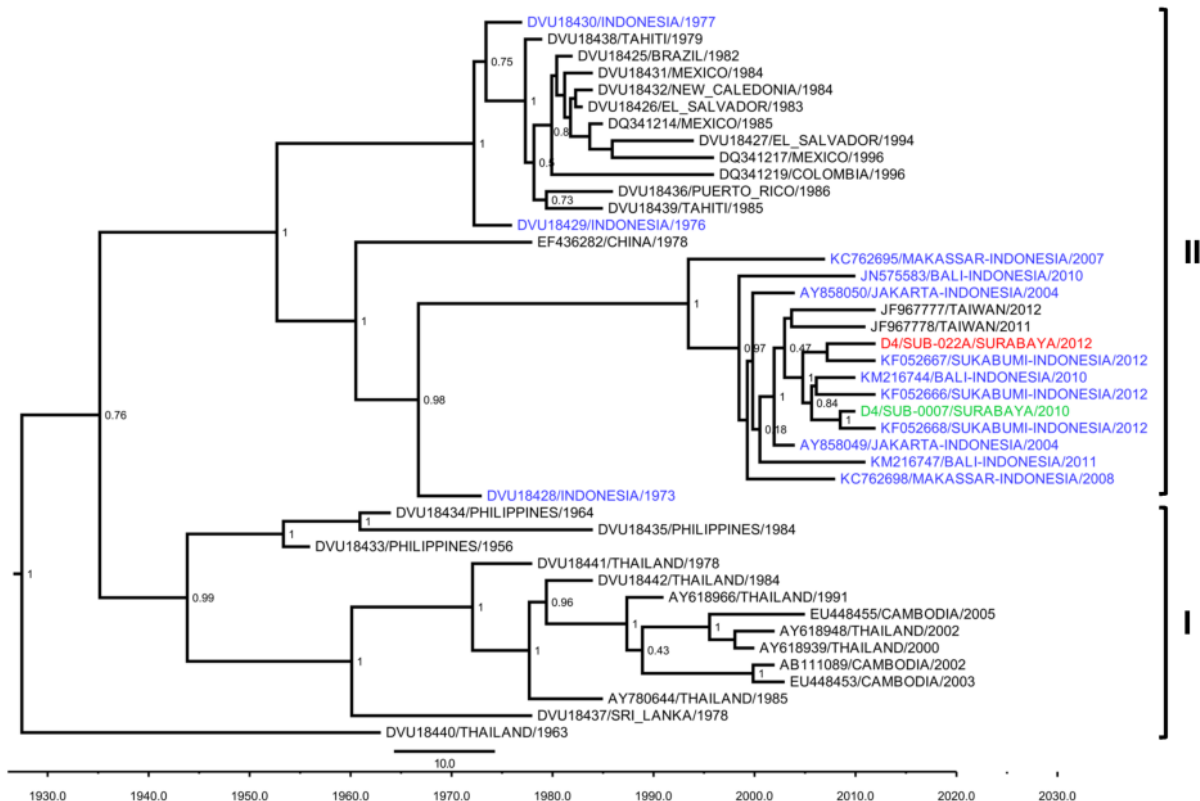


Fig 5. MCC tree of DENV-4 genotype groupings generated by Bayesian inference method as implemented in BEAST using GTR evolution model and gamma parameter rates from the E gene sequences. The Surabaya 2012 isolate (red font) was grouped into Genotype II based on classification by Lanciotti et al [30], together with isolates from Surabaya 2010 (green font) and other cities in Indonesia (blue font). The posterior probabilities of the clades are indicated as numbers in the node labels.

<https://doi.org/10.1371/journal.pone.0178443.g005>

Previous dengue outbreaks in Indonesia have been attributed primarily to DENV-3 [17,38,42,43], but our recent studies indicated that DENV-1 has become the predominant serotype in outbreaks in several cities [22,39]. Our serotype data also showed the exchange of DENV serotype predominance in Surabaya, i.e., from DENV-2 in 2008–2009 [44] to DENV-1 in 2012. Overall, our data on the predominance of DENV-1 in Surabaya in 2012 and continued in 2013, as reported previously [18], suggested that the DENV-1 has become the predominant serotype in Surabaya within the last three to four years since 2009. Other serotypes, i.e., DENV-2, -3 and -4, were continuously circulating, albeit at lower numbers.

Regarding the clinical aspects of dengue in Surabaya, we observed the equal occurrence of DF and DHF in our patients. Our findings showed that disease severity, as manifested by DF and DHF, was not related to specific serotype. Previous reports from Indonesia observed that all serotypes could cause severe dengue [45]. Similarly, our previous data also did not find any direct correlation between the infecting serotypes and disease severity [39], as did another report [46]. A recent report described DENV-1 as more related to severe disease and more likely presenting with red eyes [47]. In our study, we did not specifically examine red eyes as a clinical sign; therefore, we do not know whether, in our study, DENV-1 was also related to red

No	Sample ID	Amino Acid Position																				Severity	Genotype					
		8	68	88	103	104	109	155	171	180	224	227	242	297	324	338	339	364	365	378	380			436	440	461	481	484
1	SUB-088A	S	T	A	N	G	G	S	T	A	A	S	T	M	I	S	T	P	V	I	I	V	F	V	A	L	DF	I
2	SUB-138A	S	T	A	N	G	G	S	T	A	A	S	T	M	I	S	T	P	V	I	I	V	F	V	A	L	DF	I
3	SUB-N004	S	T	A	N	G	G	S	T	A	A	S	T	M	I	S	T	P	V	I	I	V	F	V	V	L	DF	I
4	SUB-038A	S	T	A	N	G	G	S	T	A	A	S	T	M	I	L	T	P	V	I	I	V	F	V	V	L	DF	I
5	SUB-098A	S	T	A	N	G	G	S	T	A	A	T	T	M	I	S	T	P	I	I	I	V	F	V	V	L	DF	I
6	SUB-120A	S	T	A	N	G	G	S	T	A	A	T	T	M	I	S	T	P	I	I	I	V	F	V	V	L	DF	I
7	SUB-003A	S	T	A	N	G	G	S	T	A	A	T	T	M	I	S	T	P	V	I	I	V	F	V	V	L	DHF	I
8	SUB-027A	S	T	A	N	G	G	S	T	A	A	S	T	M	I	S	T	P	V	I	I	V	F	V	V	L	DHF	I
9	SUB-048A	S	T	A	N	G	G	S	T	A	A	S	T	M	I	S	T	P	V	I	I	V	L	V	V	L	DHF	I
10	SUB-100A	S	S	A	N	G	G	S	T	A	T	T	T	M	I	S	T	P	V	I	I	V	F	V	V	L	DHF	I
11	SUB-104A	S	T	A	N	G	G	S	T	A	A	S	T	M	I	S	T	P	V	I	I	V	F	V	V	L	DHF	I
12	SUB-117A	S	T	A	N	G	G	S	T	A	A	S	T	M	I	S	T	P	V	I	I	V	F	V	V	L	DHF	I
13	SUB-141A	S	T	T	N	G	G	S	T	A	A	S	A	M	I	S	T	P	V	I	I	V	F	V	V	L	DHF	I
14	SUB-043A	S	T	A	N	G	G	S	T	V	A	S	T	M	I	S	T	P	V	I	I	V	F	V	V	L	DHF	I
15	SUB-103A	N	T	T	N	G	G	T	S	A	A	S	T	V	V	S	S	P	V	L	V	I	F	I	A	M	DF	IV
16	SUB-026A	N	T	T	N	G	G	T	S	A	A	S	T	V	V	S	S	P	V	L	V	I	F	I	A	M	DHF	IV
17	SUB-032A	N	T	T	N	G	G	T	S	A	A	S	T	V	V	S	S	P	V	L	V	I	F	I	A	M	DHF	IV
18	SUB-126A	N	T	T	N	G	G	T	S	A	A	S	T	V	V	S	S	S	V	L	V	I	F	I	A	M	DHF	IV
19	SUB-049A	N	T	T	K	W	R	T	S	A	A	S	T	V	V	S	S	P	V	L	V	I	F	I	A	M	DHF	IV

Fig 6. Comparative analysis of amino acid substitutions within the Envelope protein among Surabaya DENV-1 viruses. Only variable amino acids are shown.

<https://doi.org/10.1371/journal.pone.0178443.g006>

eyes. A limitation of our data was that the serotype distribution was not equal in our patients, with the DENV-1 being predominant, which might cause result bias.

In our study, we grouped our patients into children and adult patients. It has been reported that the patient's age is one of the factors influencing dengue clinical presentation [31]. As observed in Tables 2 and 3, more prominent signs of clinical manifestations and hematology findings commonly found in DHF, such as the hemoconcentration, thrombocytopenia, elevated liver enzymes and albumin, [6] were observed in children with DHF. Furthermore, evidence of plasma leakage, as indicated by the occurrence of pleural effusion, gall bladder wall edema, and ascites, [6] was more observed in DHF than DF (Table 2). In adult patients, although most of the clinical signs and hematology findings were consistent with the WHO classification for DF and DHF, only viral load, thrombocytopenia, and pleural effusion were statistically significant (Table 3). Our findings were consistent with a previous study that reported that the frequency of symptoms and signs in the WHO classification schemes was reduced significantly with increasing age of infection [48].

Related to dengue confirmation using NS1 antigen detection, we observed relatively low sensitivity of NS1 in both children and adult (39.5% and 63.1%, respectively) in RT-PCR positive samples (Tables 2 and 3). These low numbers were in accordance with previous studies describing the low sensitivity of NS1 detection in Indonesia [49,50].

Changes in lymphocyte subsets in dengue fever have been recognized previously [51,52]. In our study, compared to other serotypes, both lymphocyte counts and viral load were highest in DENV-1 (Table 4). Although correlation between viral load and serotypes was not statistically significant, we found that correlation between lymphocyte count and serotypes was significant ($p = 0.035$). Other studies described that viral load and/or lymphocyte count were associated with the infecting serotypes [47,53]. As such, the relationship between DENV serotypes, viremia level, and lymphocyte count warrants further studies.

Studies have revealed that a higher viral load is a risk factor for severe disease, in which patients with DHF had higher viral loads than patients with DF [54,55]. Our study revealed similar findings, in which viral load were higher in DHF compared to DF (Table 3). The occurrence of more DHF in patients with secondary infections was also observed in our study (Table 2), and further regression analysis indicated that infection status affected the severity of the diseases (S1 Table). This is consistent with the observation that secondary infection is one of the risk factors for severe dengue [56].

We observed a similar co-circulation of DENV-1 Genotypes I and IV with the previous reports in Surabaya in 2012 [18,19], as well as our DENV-1 isolates collected in 2010 (Fig 2 and Table 5). Based on the number of isolates, Genotype I apparently started to predominate over Genotype IV, a condition similar to the DENV-1 genotype distribution in Makassar [22]. Examining further detail, we observed the grouping of DENV-1 Genotype I in Surabaya into two major clades (Fig 2). The upper clade, in which most of the Surabaya isolates were grouped, contains isolates from the nearby city of Denpasar, Bali [36], while the lower clade contains isolates from Bali [36], Semarang [39], Makassar [22], and Sukabumi [35]. The Taiwan isolates, which originated from Indonesia as imported cases, [57] were also grouped in this clade (Fig 2). We do not know whether the different clade presence in Surabaya was correlated with the viral fitness. The grouping of Surabaya isolates with DENV from other cities in Indonesia suggested that the circulating DENV-1 viruses are local and endemic strains.

The DENV-2 Surabaya isolate was grouped closely with isolates from Bali and Palembang and, together with isolates from other areas in Indonesia such as Jakarta, Semarang, Sukabumi, Makassar and Sumatra, was classified into the Cosmopolitan genotype (Fig 3). This genotype is quite commonly found in Southeast Asia, including Indonesia [28]. Further analysis of the Cosmopolitan genotype, using Indonesia DENV isolates from recent years, revealed that the Surabaya 2012 isolate was grouped together into a subclade proposed as the Surabaya lineage, which grouped the majority of isolates from Surabaya during the period of 2008–2014 [32]. The Surabaya 2012 isolate shares common ancestors with the DENV isolate from Taiwan, which was imported from Indonesia. The shared common ancestor of Indonesia DENV-2 with Taiwan isolates imported from Indonesia has also been reported in Semarang, Central Java [39]. The data of DENV-2 from this study contributed to the addition of DENV-2 genetic information from 2012 and suggested the endemic nature of the DENV-2 in Surabaya over the years.

Phylogenetic analysis of three Surabaya DENV-3 isolates grouped them into Genotype I (Fig 4), which is a common genotype found in Indonesia, such as in isolates from Jakarta, Palembang, Semarang, Makassar, Sukabumi, Bandung, Sleman, and Bali [17,22,35,36,39,58]. Thus, the DENV-3 circulating in Surabaya most likely consisted of local, endemic strains that have been circulating for decades in Indonesia. For DENV-4, the phylogenetic analysis determined this isolate as Genotype II (Fig 5). This genotype is also commonly found in Indonesia, as depicted by the grouping of isolates from many cities in Indonesia into Genotype II (Fig 5). Overall, we observed that the DENVs circulating and infecting people in Surabaya were from local, endemic strains that dynamically circulate in the city.

The DENV genotypes are known to differ in both fitness and virulence [8]. Certain genotypes of DENV have been accounted for as being risk factors for severe disease [59–61]. For example, the lineage replacement of American DENV-2 by Asian/American DENV-2 has been well documented in Puerto Rico [62]. The DENV-3 Genotype IV never been associated with DHF, while Genotype III were frequently associated with DHF outbreaks [29]. DENV-3 Genotype II was associated with severe epidemics in Nicaragua, Guatemala, and Mexico [63–65]. In another example, a distinct subgroup of DENV-3 Genotype III appeared at the same time with the emergence of DHF in Sri Lanka in 1989 [60]. In Nicaragua, an abrupt increase of disease severity was observed during DENV-2 transmission which coincided with replacement of Asian/American DENV-2 NI-1 clade with a new virus clade, NI-2B [66]. Although a large body of evidence has accumulated for the correlation between DENV genotypes and disease severity, in our study we detected no statistically significant correlations. In Surabaya, the DENV-1 Genotype I and IV were co-circulating. Both genotypes were capable to cause both DF and DHF. Analysis of clinical and hematological findings also did not observe any significant correlation with DENV-1 genotypes (data not shown). In addition, specific amino acids and nucleotide substitutions responsible for viral virulence have been studied [9,67]. Likely the most studied amino acid mutation is D390N in the E protein, which affects viral replication [67,68]. As such, we compared the genetics of DENV-1 Genotypes I and IV using the E gene AA sequences (Fig 6). We revealed clear differences in AA sequence variations between these two genotypes. However, the AA comparison did not reveal any specific mutations related to disease severity. The AA substitutions were shared by isolates causing both DF and DHF (Fig 6). Previous studies have also observed similar findings and have found no reproducible genetic differences related to disease severity [69–72]. However, we are aware that only E protein AA sequences were compared in this study. It is possible that other virulence determinants are present within the dengue genome, such as in the 5' and 3' untranslated regions (UTRs), which have been associated with disease severity [67,68]. Altogether, our study did not find any direct relationship between DENV serotypes/genotypes and disease severity. We are aware that our analyses may be limited by the relatively small sample size. Therefore, future study using larger sample size will be beneficial in determining the relationships between viral genetics and disease severity. In addition, studies comparing the whole genomes of DF- and DHF-associated isolates will be useful for finding the genetic determinants of viral virulence.

In summary, we revealed the clinical and virological aspects of dengue in Surabaya. DF and DHF equally occurred in our patients. Between children and adult patients, the clinical manifestations and symptoms of dengue in Surabaya were more prominent in children. All of the DENV serotypes circulated, with the DENV-1 as the predominant serotype. No associations of serotypes/genotypes with disease severity were observed.

Supporting information

S1 Table. ANOVA result based on logistic regression of the disease severity on various factors.

(PDF)

Acknowledgments

The authors wish to thank to the patients and health practitioners involved in this study.

Author Contributions

Conceptualization: PW AA RTS SS.

Data curation: PW BY HT TYS.

Formal analysis: PW BY TYS HT RTS.

Funding acquisition: PW AA RTS.

Investigation: PW BY TYS HT.

Methodology: PW RTS AA.

Project administration: PW TYS.

Resources: DP BB MVA.

Software: HT.

Supervision: AA SS RTS.

Validation: BY.

Visualization: PW BY RTS.

Writing – original draft: PW BY RTS.

Writing – review & editing: RTS BY.

References

1. Simmons CP, Farrar JJ, Nguyen van VC, Wills B. Dengue. *N Engl J Med*. 2012; 366: 1423–1432. <https://doi.org/10.1056/NEJMra1110265> PMID: 22494122
2. Brady OJ, Gething PW, Bhatt S, Messina JP, Brownstein JS, Hoen AG, et al. Refining the global spatial limits of dengue virus transmission by evidence-based consensus. *PLoS Negl Trop Dis*. 2012; 6: e1760. <https://doi.org/10.1371/journal.pntd.0001760> PMID: 22880140
3. Bhatt S, Gething PW, Brady OJ, Messina JP, Farlow AW, Moyes CL, et al. The global distribution and burden of dengue. *Nature*. 2013; 496: 504–507. <https://doi.org/10.1038/nature12060> PMID: 23563266
4. Lambrechts L, Scott TW, Gubler DJ. Consequences of the expanding global distribution of *Aedes albopictus* for dengue virus transmission. *PLoS Negl Trop Dis*. 2010; 4: e646. <https://doi.org/10.1371/journal.pntd.0000646> PMID: 20520794
5. Martina BEE, Koraka P, Osterhaus ADME. Dengue virus pathogenesis: an integrated view. *Clin Microbiol Rev*. 2009; 22: 564–581. <https://doi.org/10.1128/CMR.00035-09> PMID: 19822889
6. WHO-SEARO. Comprehensive guidelines for prevention and control of dengue and dengue haemorrhagic fever. Revised and expanded. New Delhi, India: World Health Organization; 2011.
7. Guzman MG, Halstead SB, Artsob H, Buchy P, Farrar J, Gubler DJ, et al. Dengue: a continuing global threat. *Nat Rev Microbiol*. 2010; 8: S7–16. <https://doi.org/10.1038/nrmicro2460> PMID: 21079655
8. Holmes EC. RNA virus genomics: a world of possibilities. *J Clin Invest*. 2009; 119: 2488–2495. <https://doi.org/10.1172/JCI38050> PMID: 19729846
9. Rico-Hesse R. Dengue virus virulence and transmission determinants. *Curr Top Microbiol Immunol*. 2010; 338: 45–55. https://doi.org/10.1007/978-3-642-02215-9_4 PMID: 19802577
10. Nisalak A, Endy TP, Nimmannitya S, Kalayanaroj S, Thisyakorn U, Scott RM, et al. Serotype-specific dengue virus circulation and dengue disease in Bangkok, Thailand from 1973 to 1999. *Am J Trop Med Hyg*. 2003; 68: 191–202. PMID: 12641411
11. Huy NT, Van Giang T, Thuy DHD, Kikuchi M, Hien TT, Zamora J, et al. Factors associated with dengue shock syndrome: a systematic review and meta-analysis. *PLoS Negl Trop Dis*. 2013; 7: e2412. <https://doi.org/10.1371/journal.pntd.0002412> PMID: 24086778
12. Yacoub S, Mongkolsapaya J, Screaton G. The pathogenesis of dengue. *Curr Opin Infect Dis*. 2013; 26: 284–289. <https://doi.org/10.1097/QCO.0b013e32835fb938> PMID: 23449140
13. Fried JR, Gibbons RV, Kalayanaroj S, Thomas SJ, Srikiatkachorn A, Yoon I-K, et al. Serotype-specific differences in the risk of dengue hemorrhagic fever: an analysis of data collected in Bangkok, Thailand from 1994 to 2006. *PLoS Negl Trop Dis*. 2010; 4: e617. <https://doi.org/10.1371/journal.pntd.0000617> PMID: 20209155

14. Setiati TE, Wagenaar JF, de Kruif MD, Mairuhu AT, van Gorp EC, Soemantri A. Changing epidemiology of dengue haemorrhagic fever in Indonesia. *Bull WHO*. 2006; 30: 1–14.
15. Suwandono A, Kosasih H, Nurhayati, Kusriastuti R, Harun S, Ma'roef C, et al. Four dengue virus serotypes found circulating during an outbreak of dengue fever and dengue haemorrhagic fever in Jakarta, Indonesia, during 2004. *Trans R Soc Trop Med Hyg*. 2006; 100: 855–62. <https://doi.org/10.1016/j.trstmh.2005.11.010> PMID: 16507313
16. Sumarmo. Dengue haemorrhagic fever in Indonesia. *Southeast Asian J Trop Med Public Health*. 1987; 18: 269–74.
17. Corwin AL, Larasati RP, Bangs MJ, Wuryadi S, Arjoso S, Sukri N, et al. Epidemic dengue transmission in southern Sumatra, Indonesia. *Trans R Soc Trop Med Hyg*. 2001; 95: 257–65. PMID: 11490992
18. Kotaki T, Yamanaka A, Mulyatno KC, Churrotin S, Labiqah A, Sucipto TH, et al. Continuous dengue type 1 virus genotype shifts followed by co-circulation, clade shifts and subsequent disappearance in Surabaya, Indonesia, 2008–2013. *Infect Genet Evol*. 2014; 28: 48–54. <https://doi.org/10.1016/j.meegid.2014.09.002> PMID: 25219342
19. Yamanaka A, Mulyatno KC, Susilowati H, Hendrianto E, Ginting AP, Sary DD, et al. Displacement of the predominant dengue virus from type 2 to type 1 with a subsequent genotype shift from IV to I in Surabaya, Indonesia 2008–2010. *PLoS ONE*. 2011; 6: e27322. <https://doi.org/10.1371/journal.pone.0027322> PMID: 22087290
20. Sasmono RT, Aryati A, Wardhani P, Yohan B, Trimarsanto H, Fahri S, et al. Performance of Simplex dengue molecular assay compared to conventional and SYBR green RT-PCR for detection of dengue infection in Indonesia. *PLoS ONE*. 2014; 9: e103815. <https://doi.org/10.1371/journal.pone.0103815> PMID: 25102066
21. Lanciotti RS, Calisher CH, Gubler DJ, Chang GJ, Vorndam AV. Rapid detection and typing of dengue viruses from clinical samples by using reverse transcriptase-polymerase chain reaction. *J Clin Microbiol*. 1992; 30: 545–551. PMID: 1372617
22. Sasmono RT, Wahid I, Trimarsanto H, Yohan B, Wahyuni S, Hertanto M, et al. Genomic analysis and growth characteristic of dengue viruses from Makassar, Indonesia. *Infect Genet Evol*. 2015; <https://doi.org/10.1016/j.meegid.2015.03.006> PMID: 25784569
23. Tamura K, Peterson D, Peterson N, Stecher G, Nei M, Kumar S. MEGA5: molecular evolutionary genetics analysis using maximum likelihood, evolutionary distance, and maximum parsimony methods. *Mol Biol Evol*. 2011; 28: 2731–2739. <https://doi.org/10.1093/molbev/msr121> PMID: 21546353
24. Edgar RC. MUSCLE: multiple sequence alignment with high accuracy and high throughput. *Nucleic Acids Res*. 2004; 32: 1792–7. <https://doi.org/10.1093/nar/gkh340> PMID: 15034147
25. Drummond AJ, Suchard MA, Xie D, Rambaut A. Bayesian phylogenetics with BEAUti and the BEAST 1.7. *Mol Biol Evol*. 2012; 29: 1969–1973. <https://doi.org/10.1093/molbev/mss075> PMID: 22367748
26. Drummond AJ, Rambaut A. BEAST: Bayesian evolutionary analysis by sampling trees. *BMC Evol Biol*. 2007; 7: 214. <https://doi.org/10.1186/1471-2148-7-214> PMID: 17996036
27. Goncalvez AP, Escalante AA, Pujol FH, Ludert JE, Tovar D, Salas RA, et al. Diversity and evolution of the envelope gene of dengue virus type 1. *Virology*. 2002; 303: 110–119. PMID: 12482662
28. Twiddy SS, Farrar JJ, Vinh Chau N, Wills B, Gould EA, Gritsun T, et al. Phylogenetic relationships and differential selection pressures among genotypes of dengue-2 virus. *Virology*. 2002; 298: 63–72. PMID: 12093174
29. Lanciotti RS, Lewis JG, Gubler DJ, Trent DW. Molecular evolution and epidemiology of dengue-3 viruses. *J Gen Virol*. 1994; 75 (Pt 1): 65–75.
30. Lanciotti RS, Gubler DJ, Trent DW. Molecular evolution and phylogeny of dengue-4 viruses. *J Gen Virol*. 1997; 78 (Pt 9): 2279–2284.
31. Trung D, Wills B. Clinical Features of Dengue. In: Gubler Duane J., Ooi Eng Eong, Vasudevan Subhash, Farrar Jeremy, editor. *Dengue and Dengue Hemorrhagic Fever*. 2nd ed. CAB International; 2014. pp. 115–144.
32. Kotaki T, Yamanaka A, Mulyatno KC, Churrotin S, Sucipto TH, Labiqah A, et al. Divergence of the dengue virus type 2 Cosmopolitan genotype associated with two predominant serotype shifts between 1 and 2 in Surabaya, Indonesia, 2008–2014. *Infect Genet Evol*. 2016; 37: 88–93. <https://doi.org/10.1016/j.meegid.2015.11.002> PMID: 26553170
33. Shu P-Y, Su C-L, Liao T-L, Yang C-F, Chang S-F, Lin C-C, et al. Molecular characterization of dengue viruses imported into Taiwan during 2003–2007: geographic distribution and genotype shift. *Am J Trop Med Hyg*. 2009; 80: 1039–1046. PMID: 19478273
34. Lanciotti RS, Gubler DJ, Trent DW. Molecular evolution and phylogeny of dengue-4 viruses. *J Gen Virol*. 1997; 78 (Pt 9): 2279–2284.

35. Nusa R, Prasetyowati H, Meutiawati F, Yohan B, Trimarsanto H, Setianingsih TY, et al. Molecular surveillance of Dengue in Sukabumi, West Java province, Indonesia. *J Infect Dev Ctries*. 2014; 8: 733–741. <https://doi.org/10.3855/jidc.3959> PMID: 24916872
36. Ernst T, McCarthy S, Chidlow G, Luang-Suarkia D, Holmes EC, Smith DW, et al. Emergence of a new lineage of dengue virus type 2 identified in travelers entering Western Australia from Indonesia, 2010–2012. *PLoS Negl Trop Dis*. 2015; 9: e0003442. <https://doi.org/10.1371/journal.pntd.0003442> PMID: 25635775
37. Suroso T, Holani A, Imran A. Dengue Haemorrhagic Fever Outbreaks in Indonesia 1997–1998. *Dengue Bulletin*. 1998; 22: 45–50.
38. Richards AL, Bagus R, Baso SM, Follows GA, Tan R, Graham RR, et al. The first reported outbreak of dengue hemorrhagic fever in Irian Jaya, Indonesia. *Am J Trop Med Hyg*. 1997; 57: 49–55. PMID: 9242317
39. Fahri S, Yohan B, Trimarsanto H, Sayono S, Hadisaputro S, Dharmana E, et al. Molecular Surveillance of Dengue in Semarang, Indonesia Revealed the Circulation of an Old Genotype of Dengue Virus Serotype-1. *PLoS Negl Trop Dis*. 2013; 7: e2354. <https://doi.org/10.1371/journal.pntd.0002354> PMID: 23951374
40. Karyanti MR, Uiterwaal CSPM, Kusriastuti R, Hadinegoro SR, Rovers MM, Heesterbeek H, et al. The changing incidence of dengue haemorrhagic fever in Indonesia: a 45-year registry-based analysis. *BMC Infect Dis*. 2014; 14: 412. <https://doi.org/10.1186/1471-2334-14-412> PMID: 25064368
41. Anker M, Arima Y. Male-female differences in the number of reported incident dengue fever cases in six Asian countries. *Western Pac Surveill Response J*. 2011; 2: 17–23. <https://doi.org/10.5365/WPSAR.2011.2.1.002> PMID: 23908884
42. Gubler DJ, Suharyono W, Lubis I, Eram S, Gunarso S. Epidemic dengue 3 in central Java, associated with low viremia in man. *Am J Trop Med Hyg*. 1981; 30: 1094–1099. PMID: 7283006
43. Suharyono W, Gubler DJ, Lubis I, Tan R, Abidin M, Sie A, et al. Dengue virus isolation in Indonesia, 1975–1978. *Asian J Infect Dis*. 1979; 3: 27–32. PMID: 496711
44. Aryati, Wardhani P. Dengue Virus profile in Surabaya from 2008–2009. *Indonesian Journal of Clinical Pathology and Laboratory Medicine*. 2010; 17: 21–24.
45. Sumarmo, Wulur H, Jahja E, Gubler DJ, Suharyono W, Sorensen K. Clinical observations on virologically confirmed fatal dengue infections in Jakarta, Indonesia. *Bull World Health Organ*. 1983; 61: 693–701. PMID: 6605216
46. Thai KTD, Phuong HL, Thanh Nga TT, Giao PT, Hung LQ, Van Nam N, et al. Clinical, epidemiological and virological features of Dengue virus infections in Vietnamese patients presenting to primary care facilities with acute undifferentiated fever. *J Infect*. 2010; 60: 229–237. <https://doi.org/10.1016/j.jinf.2010.01.003> PMID: 20080126
47. Yung C-F, Lee K-S, Thein T-L, Tan L-K, Gan VC, Wong JGX, et al. Dengue serotype-specific differences in clinical manifestation, laboratory parameters and risk of severe disease in adults, Singapore. *Am J Trop Med Hyg*. 2015; 92: 999–1005. <https://doi.org/10.4269/ajtmh.14-0628> PMID: 25825386
48. Low JGH, Ong A, Tan LK, Chaterji S, Chow A, Lim WY, et al. The early clinical features of dengue in adults: challenges for early clinical diagnosis. *PLoS Negl Trop Dis*. 2011; 5: e1191. <https://doi.org/10.1371/journal.pntd.0001191> PMID: 21655307
49. Aryati A, Trimarsanto H, Yohan B, Wardhani P, Fahri S, Sasmono RT. Performance of commercial dengue NS1 ELISA and molecular analysis of NS1 gene of dengue viruses obtained during surveillance in Indonesia. *BMC Infect Dis*. 2013; 13: 611. <https://doi.org/10.1186/1471-2334-13-611> PMID: 24571329
50. Kosasih H, Alisjahbana B, Widjaja S, Nurhayati null, de Mast Q, Parwati I, et al. The diagnostic and prognostic value of dengue non-structural 1 antigen detection in a hyper-endemic region in Indonesia. *PLoS ONE*. 2013; 8: e80891. <https://doi.org/10.1371/journal.pone.0080891> PMID: 24260501
51. Liu C-C, Huang K-J, Lin Y-S, Yeh T-M, Liu H-S, Lei H-Y. Transient CD4/CD8 ratio inversion and aberrant immune activation during dengue virus infection. *J Med Virol*. 2002; 68: 241–252. <https://doi.org/10.1002/jmv.10198> PMID: 12210415
52. Sarasombath S, Suvatve V, Homchampa P. Kinetics of lymphocyte subpopulations in dengue hemorrhagic fever/dengue shock syndrome. *Southeast Asian J Trop Med Public Health*. 1988; 19: 649–656. PMID: 3238478
53. Tricou V, Minh NN, Farrar J, Tran HT, Simmons CP. Kinetics of viremia and NS1 antigenemia are shaped by immune status and virus serotype in adults with dengue. *PLoS Negl Trop Dis*. 2011; 5: e1309. <https://doi.org/10.1371/journal.pntd.0001309> PMID: 21909448
54. Libraty DH, Endy TP, Hough H-SH, Green S, Kalayanarooj S, Suntayakorn S, et al. Differing influences of virus burden and immune activation on disease severity in secondary dengue-3 virus infections. *J Infect Dis*. 2002; 185: 1213–1221. <https://doi.org/10.1086/340365> PMID: 12001037

55. Vaughn DW, Green S, Kalayanaroj S, Innis BL, Nimmannitya S, Suntayakom S, et al. Dengue viremia titer, antibody response pattern, and virus serotype correlate with disease severity. *J Infect Dis*. 2000; 181: 2–9. <https://doi.org/10.1086/315215> PMID: 10608744
56. Guzman MG, Alvarez M, Halstead SB. Secondary infection as a risk factor for dengue hemorrhagic fever/dengue shock syndrome: an historical perspective and role of antibody-dependent enhancement of infection. *Arch Virol*. 2013; 158: 1445–1459. <https://doi.org/10.1007/s00705-013-1645-3> PMID: 23471635
57. Huang J-H, Su C-L, Yang C-F, Liao T-L, Hsu T-C, Chang S-F, et al. Molecular characterization and phylogenetic analysis of dengue viruses imported into Taiwan during 2008–2010. *Am J Trop Med Hyg*. 2012; 87: 349–358. <https://doi.org/10.4269/ajtmh.2012.11-0666> PMID: 22855770
58. Ong SH, Yip JT, Chen YL, Liu W, Harun S, Lystianingsih E, et al. Periodic re-emergence of endemic strains with strong epidemic potential—a proposed explanation for the 2004 Indonesian dengue epidemic. *Infect Genet Evol*. 2008; 8: 191–204. <https://doi.org/10.1016/j.meegid.2007.12.005> PMID: 18243816
59. Balmaseda A, Hammond SN, Perez L, Tellez Y, Saborio SI, Mercado JC, et al. Serotype-specific differences in clinical manifestations of dengue. *Am J Trop Med Hyg*. 2006; 74: 449–56. PMID: 16525106
60. Messer WB, Gubler DJ, Harris E, Sivananthan K, de Silva AM. Emergence and global spread of a dengue serotype 3, subtype III virus. *Emerg Infect Dis*. 2003; 9: 800–9. <https://doi.org/10.3201/eid0907.030038> PMID: 12899133
61. Rico-Hesse R, Harrison LM, Salas RA, Tovar D, Nisalak A, Ramos C, et al. Origins of dengue type 2 viruses associated with increased pathogenicity in the Americas. *Virology*. 1997; 230: 244–51. PMID: 9143280
62. Bennett SN, Holmes EC, Chirivella M, Rodriguez DM, Beltran M, Vorndam V, et al. Molecular evolution of dengue 2 virus in Puerto Rico: positive selection in the viral envelope accompanies clade reintroduction. *J Gen Virol*. 2006; 87: 885–893. <https://doi.org/10.1099/vir.0.81309-0> PMID: 16528038
63. Díaz FJ, Black WC, Farfán-Ale JA, Loroño-Pino MA, Olson KE, Beaty BJ. Dengue virus circulation and evolution in Mexico: a phylogenetic perspective. *Arch Med Res*. 2006; 37: 760–773. <https://doi.org/10.1016/j.arcmed.2006.02.004> PMID: 16824937
64. Harris E, Videz E, Pérez L, Sandoval E, Téllez Y, Pérez ML, et al. Clinical, epidemiologic, and virologic features of dengue in the 1998 epidemic in Nicaragua. *Am J Trop Med Hyg*. 2000; 63: 5–11. PMID: 11357995
65. Usuku S, Castillo L, Sugimoto C, Noguchi Y, Yogo Y, Kobayashi N. Phylogenetic analysis of dengue-3 viruses prevalent in Guatemala during 1996–1998. *Arch Virol*. 2001; 146: 1381–1390. PMID: 11556713
66. OhAinle M, Balmaseda A, Macalalad AR, Tellez Y, Zody MC, Saborio S, et al. Dynamics of dengue disease severity determined by the interplay between viral genetics and serotype-specific immunity. *Sci Transl Med*. 2011; 3: 114ra128. <https://doi.org/10.1126/scitranslmed.3003084> PMID: 22190239
67. Pryor MJ, Carr JM, Hocking H, Davidson AD, Li P, Wright PJ. Replication of dengue virus type 2 in human monocyte-derived macrophages: comparisons of isolates and recombinant viruses with substitutions at amino acid 390 in the envelope glycoprotein. *Am J Trop Med Hyg*. 2001; 65: 427–34. PMID: 11716094
68. Leitmeyer KC, Vaughn DW, Watts DM, Salas R, Villalobos I, de C, et al. Dengue virus structural differences that correlate with pathogenesis. *J Virol*. 1999; 73: 4738–47. PMID: 10233934
69. Blok J, Samuel S, Gibbs AJ, Vitarana UT. Variation of the nucleotide and encoded amino acid sequences of the envelope gene from eight dengue-2 viruses. *Arch Virol*. 1989; 105: 39–53. PMID: 2719554
70. Chungue E, Deubel V, Cassar O, Laille M, Martin PM. Molecular epidemiology of dengue 3 viruses and genetic relatedness among dengue 3 strains isolated from patients with mild or severe form of dengue fever in French Polynesia. *J Gen Virol*. 1993; 74 (Pt 12): 2765–2770. <https://doi.org/10.1099/0022-1317-74-12-2765> PMID: 8277284
71. Imrie A, Roche C, Zhao Z, Bennett S, Laille M, Effler P, et al. Homology of complete genome sequences for dengue virus type-1, from dengue-fever- and dengue-haemorrhagic-fever-associated epidemics in Hawaii and French Polynesia. *Ann Trop Med Parasitol*. 2010; 104: 225–235. <https://doi.org/10.1179/136485910X12647085215570> PMID: 20507696
72. Lee E, Gubler DJ, Weir RC, Dalgarno L. Genetic and biological differentiation of dengue 3 isolates obtained from clinical cases in Java, Indonesia, 1976–1978. *Arch Virol*. 1993; 133: 113–125. PMID: 8240004

Clinical And Virological Characteristics Of Dengue In Surabaya, Indonesia

ORIGINALITY REPORT

19%

SIMILARITY INDEX

11%

INTERNET SOURCES

15%

PUBLICATIONS

6%

STUDENT PAPERS

PRIMARY SOURCES

- 1** Submitted to Liberty University 2%
Student Paper
- 2** Yusha Araf, Md. Asad Ullah, Nairita Ahsan Faruqui, Sadrina Afrin Mowna, Durdana Hossain Prium, Bishajit Sarkar. "Dengue Outbreak is a Global Recurrent Crisis: Review of the Literature", Electronic Journal of General Medicine, 2020 2%
Publication
- 3** jurnal.ugm.ac.id 1%
Internet Source
- 4** www.ijhcr.com 1%
Internet Source
- 5** Benediktus Yohan, Puspa Wardhani, Aryati, Hidayat Trimarsanto, R. Tedjo Sasmono. "Production of recombinant dengue non-structural 1 (NS1) proteins from clinical virus isolates", Protein Expression and Purification, 2017 1%
Publication

6	Eggi Arguni, Citra Indriani, Ayu Rahayu, Endah Supriyati et al. "Dengue virus population genetics in Yogyakarta, Indonesia prior to city-wide Wolbachia deployment", Infection, Genetics and Evolution, 2022 Publication	1 %
7	Marsha S. Santoso, Benediktus Yohan, Dionisius Denis, Rahma F. Hayati et al. "Diagnostic accuracy of five different Brands of Dengue Virus non-Structural Protein 1 (NS1) antigen rapid diagnostic tests (RDT) in Indonesia", Diagnostic Microbiology and Infectious Disease, 2020 Publication	1 %
8	stacks.cdc.gov Internet Source	<1 %
9	bmresnotes.biomedcentral.com Internet Source	<1 %
10	hal.archives-ouvertes.fr Internet Source	<1 %
11	Submitted to Udayana University Student Paper	<1 %
12	www.nature.com Internet Source	<1 %
13	Submitted to Pennsylvania State System of Higher Education Student Paper	<1 %

14

dspace.stir.ac.uk

Internet Source

<1 %

15

["Dengue Virus", Springer Science and Business Media LLC, 2010](#)

Publication

<1 %

16

[Mangione, Julia N.A., Nguyen Tien Huy, Nguyen Thi Phuong Lan, Evaristus Chibunna Mbanefo, Tran Thi Ngoc Ha, Lam Quoc Bao, Cao Thi Phi Nga, Vo Van Tuong, Tran Van Dat, Tran Thi Thuy, Ha Manh Tuan, Vu Thi Que Huong, and Kenji Hirayama. "The Association of Cytokines with Severe Dengue in Children", Tropical Medicine and Health, 2014.](#)

Publication

<1 %

17

[Submitted to University of KwaZulu-Natal](#)

Student Paper

<1 %

18

[Eun-Ha Hwang, Green Kim, Hanseul Oh, You Jung An et al. "Molecular and evolutionary analysis of dengue virus serotype 2 isolates from Korean travelers in 2015", Archives of Virology, 2020](#)

Publication

<1 %

19

[Jenny G. H. Low, Adrian Ong, Li Kiang Tan, Shera Chaterji, Angelia Chow, Wen Yan Lim, Koon Wui Lee, Robert Chua, Choon Rong Chua, Sharon W. S. Tan, Yin Bun Cheung, Martin L. Hibberd, Subhash G. Vasudevan,](#)

<1 %

Lee-Ching Ng, Yee Sin Leo, Eng Eong Ooi. "The Early Clinical Features of Dengue in Adults: Challenges for Early Clinical Diagnosis", PLoS Neglected Tropical Diseases, 2011

Publication

20

www.science.org

Internet Source

<1 %

21

Tauqeer Hussain Mallhi, Amer Hayat Khan, Azreen Syazril Adnan, Azmi Sarriff, Yusra Habib Khan, Fauziah Jummaat. "Clinico-laboratory spectrum of dengue viral infection and risk factors associated with dengue hemorrhagic fever: a retrospective study", BMC Infectious Diseases, 2015

Publication

<1 %

22

Submitted to University of Southampton

Student Paper

<1 %

23

studylib.net

Internet Source

<1 %

24

wwwnc.cdc.gov

Internet Source

<1 %

25

Submitted to Badan PPSDM Kesehatan Kementerian Kesehatan

Student Paper

<1 %

26

dokumen.pub

Internet Source

<1 %

27	www.hal.inserm.fr Internet Source	<1 %
28	Submitted to Monash University Student Paper	<1 %
29	www.minervamedica.it Internet Source	<1 %
30	Jessica Navero-Castillejos, Rosa Benitez, Nuria Torner, José Muñoz et al. "Molecular Characterization of Imported and Autochthonous Dengue in Northeastern Spain", <i>Viruses</i> , 2021 Publication	<1 %
31	Kanaporn Poltep, Juthamas Phadungsombat, Emi E. Nakayama, Nathamon Kosoltanapiwat et al. "Genetic Diversity of Dengue Virus in Clinical Specimens from Bangkok, Thailand, during 2018–2020: Co-Circulation of All Four Serotypes with Multiple Genotypes and/or Clades", <i>Tropical Medicine and Infectious Disease</i> , 2021 Publication	<1 %
32	T. P. Endy. "Spatial and Temporal Circulation of Dengue Virus Serotypes: A Prospective Study of Primary School Children in Kamphaeng Phet, Thailand", <i>American Journal of Epidemiology</i> , 07/01/2002 Publication	<1 %

33

repository-tnmgrmu.ac.in

Internet Source

<1 %

34

Indra Sandinirwan, Bani Muslim, Henry Leo, Hasanah Hasanah, Permata Putri Karina.

"Title: Clinical manifestation and laboratory parameters associated with progression to severe dengue in children: a systematic review and meta-analysis", Cold Spring Harbor Laboratory, 2023

Publication

<1 %

35

Submitted to St. John Fisher College

Student Paper

<1 %

36

Ali, Akhtar, and Ijaz Ali. "The Complete Genome Phylogeny of Geographically Distinct Dengue Virus Serotype 2 Isolates (1944-2013) Supports Further Groupings within the Cosmopolitan Genotype", PLoS ONE, 2015.

Publication

<1 %

37

K. Clyde, J. L. Kyle, E. Harris. "Recent Advances in Deciphering Viral and Host Determinants of Dengue Virus Replication and Pathogenesis", Journal of Virology, 2006

Publication

<1 %

38

dr.lib.sjp.ac.lk

Internet Source

<1 %

39

Submitted to De La Salle University - Manila

Student Paper

<1 %

40 Zhao, Hui, Fu-Chun Zhang, Qin Zhu, Jian Wang, Wen-Xin Hong, Ling-Zhai Zhao, Yong-Qiang Deng, Shuang Qiu, Yu Zhang, Wei-Ping Cai, Wu-Chun Cao, and Cheng-Feng Qin. "Epidemiological and Virological Characterizations of the 2014 Dengue Outbreak in Guangzhou, China", PLoS ONE, 2016. <1 %

Publication

41 Harapan Harapan, Alice Michie, Timo Ernst, Kritu Panta et al. "Co-Circulation of Chikungunya and Multiple DENV Serotypes and Genotypes, Western Indonesia 2015–2016", Viruses, 2022 <1 %

Publication

42 Kazi Milenur Rahman Prattay, Md. Raihan Sarkar, Abu Zar Md. Shafiullah, Md. Saiful Islam, Sheikh Zahir Raihan, Nahid Sharmin. "A retrospective study on the socio-demographic factors and clinical parameters of dengue disease and their effects on the clinical course and recovery of the patients in a tertiary care hospital of Bangladesh", PLOS Neglected Tropical Diseases, 2022 <1 %

Publication

43 Megan O'Driscoll, Natsuko Imai, Neil M. Ferguson, Sri Rezeki Hadinegoro et al. "Spatiotemporal variability in dengue <1 %

transmission intensity in Jakarta, Indonesia",
PLOS Neglected Tropical Diseases, 2020

Publication

44

Ong, S.H.. "Periodic re-emergence of endemic strains with strong epidemic potential-A proposed explanation for the 2004 Indonesian dengue epidemic", Infection, Genetics and Evolution, 200803

Publication

<1 %

45

insights.sagepub.com

Internet Source

<1 %

46

www.tm.mahidol.ac.th

Internet Source

<1 %

47

Cervantes Torres Jacquelynne Brenda. "Desarrollo de un nuevo inmunopotenciador para uso humano : estudio preclínico y dilucidación de sus mecanismos de acción", TESIUNAM, 2020

Publication

<1 %

48

Chung-Tao Tang, Pi-Chun Li, I-Ju Liu, Mei-Ying Liao, Chiung-Yi Chiu, Day-Yu Chao, Han-Chung Wu. "An Epitope-Substituted DNA Vaccine Improves Safety and Immunogenicity against Dengue Virus Type 2", PLOS Neglected Tropical Diseases, 2015

Publication

<1 %

49

Dagwin Luang-Suarkia, Timo Ernst, Michael P. Alpers, Ralph Garruto, David Smith, Allison Imrie. "Serological evidence for transmission of multiple dengue virus serotypes in Papua New Guinea and West Papua prior to 1963", PLOS Neglected Tropical Diseases, 2017

Publication

<1 %

50

Elodie Descloux, Van-Mai Cao-Lormeau, Claudine Roche, Xavier De Lamballerie. "Dengue 1 Diversity and Microevolution, French Polynesia 2001–2006: Connection with Epidemiology and Clinics", PLoS Neglected Tropical Diseases, 2009

Publication

<1 %

51

Harapan Harapan, Alice Michie, R. Tedjo Sasmono, Allison Imrie. "Dengue: A Minireview", Viruses, 2020

Publication

<1 %

52

Héctor Gómez Dantés, José Arturo Farfán-Ale, Elsa Sarti. "Epidemiological Trends of Dengue Disease in Mexico (2000–2011): A Systematic Literature Search and Analysis", PLoS Neglected Tropical Diseases, 2014

Publication

<1 %

53

Keita Suzuki, Juthamas Phadungsombat, Emi E. Nakayama, Akatsuki Saito et al. "Genotype replacement of dengue virus type 3 and clade replacement of dengue virus type 2 genotype

<1 %

Cosmopolitan in Dhaka, Bangladesh in 2017", Infection, Genetics and Evolution, 2019

Publication

54

Kotaki, Tomohiro, Atsushi Yamanaka, Kris Cahyo Mulyatno, Siti Churrotin, Teguh Hari Sucipto, Amaliah Labiqah, Nur Laila Fitriati Ahwanah, Soegeng Soegijanto, Masanori Kameoka, and Eiji Konishi. "Divergence of the dengue virus type 2 Cosmopolitan genotype associated with two predominant serotype shifts between 1 and 2 in Surabaya, Indonesia, 2008–2014", Infection Genetics and Evolution, 2016.

Publication

55

Kumaria, R.. "Molecular detection and serotypic characterization of dengue viruses by single-tube multiplex reverse transcriptase-polymerase chain reaction", Diagnostic Microbiology & Infectious Disease, 200508

Publication

56

Manakkadan, Anoop, Iype Joseph, Raji Rajendran Prasanna, Riaz Ismail kunju, Lalitha Kailas, and Easwaran Sreekumar. "Lineage shift in Indian strains of Dengue virus serotype-3 (Genotype III), evidenced by detection of lineage IV strains in clinical cases from Kerala", Virology Journal, 2013.

Publication

<1 %

<1 %

<1 %

57

Muhammad Hatta Prabowo, Supawat Chatchen, Patsamon Rijiravanich, Pana Klamkam et al. "Clinical evaluation of a developed paper-based Dengue NS1 rapid diagnostic test for febrile illness patients", International Journal of Infectious Diseases, 2021

Publication

<1 %

58

Shih, Hsin-I, Hsiang-Chin Hsu, Chi-Jung Wu, Chih-Hao Lin, Chia-Ming Chang, Yi-Fang Tu, Chih-Chia Hsieh, Chih-Hsien Chi, and Tzu-Ching Sung. "Applications of a Rapid and Sensitive Dengue DUO Rapid Immunochromatographic Test Kit as a Diagnostic Strategy during a Dengue Type 2 Epidemic in an Urban City", PLoS ONE, 2016.

Publication

<1 %

59

Tsai, Tsung-Ting, Yi-Jui Chuang, Yee-Shin Lin, Shu-Wen Wan, Chia-Ling Chen, and Chiou-Feng Lin. "An emerging role for the anti-inflammatory cytokine interleukin-10 in dengue virus infection", Journal of Biomedical Science, 2013.

Publication

<1 %

60

Wang, Wei - Kung, Hui - Ling Chen, Chao - Fu Yang, Szu - Chia Hsieh, Chung - Chou Juan, Shu - Mei Chang, Cheng - Ching Yu, Li - Hui Lin, Jyh - Hsiung Huang, and Chwan - Chuen

<1 %

King. "Slower Rates of Clearance of Viral Load and Virus - Containing Immune Complexes in Patients with Dengue Hemorrhagic Fever", *Clinical Infectious Diseases*, 2006.

Publication

61

dr.ntu.edu.sg

Internet Source

<1 %

62

genomebiology.biomedcentral.com

Internet Source

<1 %

63

repository.ucc.edu.co

Internet Source

<1 %

64

teses.usp.br

Internet Source

<1 %

65

theses.gla.ac.uk

Internet Source

<1 %

66

www.arca.fiocruz.br

Internet Source

<1 %

67

www.parazitologie.cz

Internet Source

<1 %

68

www.scielo.br

Internet Source

<1 %

69

D. Priyadarshini. "Clinical Findings and Pro-Inflammatory Cytokines in Dengue Patients in Western India: A Facility-Based Study", *PLoS ONE*, 01/14/2010

Publication

<1 %

70

Nurminha Nurminha, Tori Rihiantoro, Mara Ipa. "Karakteristik Klinis dan Virologis Penderita Demam Berdarah Dengue di Kota Bandar Lampung", *ASPIRATOR - Journal of Vector-borne Disease Studies*, 2020

Publication

<1 %

71

Boon-Teong Teoh, Sing-Sin Sam, Kim-Kee Tan, Jefree Johari, Juraina Abd-Jamil, Poh-Sim Hooi, Sazaly AbuBakar. "The Use of NS1 Rapid Diagnostic Test and qRT-PCR to Complement IgM ELISA for Improved Dengue Diagnosis from Single Specimen", *Scientific Reports*, 2016

Publication

<1 %

72

I Made Susila Utama, Nurhayati Lukman, Dewi Dian Sukmawati, Bacht Alisjahbana et al. "Dengue viral infection in Indonesia: Epidemiology, diagnostic challenges, and mutations from an observational cohort study", *PLOS Neglected Tropical Diseases*, 2019

Publication

<1 %

73

Jennifer L. Kyle, Eva Harris. "Global Spread and Persistence of Dengue", *Annual Review of Microbiology*, 2008

Publication

<1 %

74

R. Rodriguez-Roche, M. Alvarez, T. Gritsun, D. Rosario, S. Halstead, G. Kouri, E. A. Gould, M.

<1 %

G. Guzman. "Dengue virus type 2 in Cuba, 1997: conservation of E gene sequence in isolates obtained at different times during the epidemic", Archives of Virology, 2004

Publication

75

Tauyne Menegaldo Pinheiro, Mânlio Tasso de Oliveira Mota, Aripuanã Sakurada Aranha Watanabe, Joice Matos Biselli-Périco et al. "Viral immunogenicity determines epidemiological fitness in a cohort of DENV-1 infection in Brazil", PLOS Neglected Tropical Diseases, 2018

Publication

<1 %

Exclude quotes Off

Exclude matches Off

Exclude bibliography On

Clinical And Virological Characteristics Of Dengue In Surabaya, Indonesia

GRADEMARK REPORT

FINAL GRADE

/0

GENERAL COMMENTS

Instructor

PAGE 1

PAGE 2

PAGE 3

PAGE 4

PAGE 5

PAGE 6

PAGE 7

PAGE 8

PAGE 9

PAGE 10

PAGE 11

PAGE 12

PAGE 13

PAGE 14

PAGE 15

PAGE 16

PAGE 17

PAGE 18

PAGE 19

