

[Open all abstracts](#)**Preface**

- OPEN ACCESS** 011001  
 The 1st International Conference on Tropical Medicine and Infectious Diseases (ICTROMI) Faculty of Medicine Universitas Sumatera Utara in conjunction with The 23rd National Congress of The Indonesian Society of Tropical and Infectious Diseases Consultant and The 18th Annual Meeting of Internal Medicine Department Faculty of Medicine Universitas Sumatera Utara  
[Open abstract](#) [View article](#) [PDF](#)

- OPEN ACCESS** 011002  
 Peer review statement  
[Open abstract](#) [View article](#) [PDF](#)

**Papers****Tropical Medicine and Infectious Diseases**

- OPEN ACCESS** 012001  
 Analysis cluster of differentiation 4 number and c-reactive protein concentration in patient with human immunodeficiency virus with or without lung tuberculosis  
 M J Nur, F Kuhuwael, S Katu, H Mubin and R Halim  
[Open abstract](#) [View article](#) [PDF](#)

- OPEN ACCESS** 012002  
 Correlation between HIV-1 genotype and clinical progression in HIV/AIDS patients in Surabaya, Indonesia  
 B E Rachman, S Q Khairumisa, A M Witaningrum, M Q Yunifiar and Nasronudin  
[Open abstract](#) [View article](#) [PDF](#)

- OPEN ACCESS** 012003  
 Prevalence of drug-resistant mutation among drug-treated HIV/AIDS inpatient in Airlangga University teaching hospital, Surabaya, Indonesia  
 B E Rachman, S Q Khairumisa, A M Witaningrum, M Q Yunifiar, P Widiyanti and Nasronudin  
[Open abstract](#) [View article](#) [PDF](#)

- OPEN ACCESS** 012004  
 HIV impact on women: gender difference among late testers and advanced HIV infection  
 N M D D Sukmawati, T P Merati, A Somia, S Utama and Y Gayatri  
[Open abstract](#) [View article](#) [PDF](#)

- OPEN ACCESS** 012005  
 Analysis of the association opportunistic infections with c-reactive protein focus toxoplasma, cytomegalovirus, rubella, and hepatitis in human immunodeficiency virus  
 K H Khadjah, K Ferica, S Katu, R Halim and A H Mubin  
[Open abstract](#) [View article](#) [PDF](#)

- OPEN ACCESS** 012006  
 Effect of isoniazid preventive therapy on tuberculosis incidence in people living with HIV/AIDS at Hasan Sadikin hospital  
 I Satiawan, Y Hartantri, B Werry, Y Nababan, R Wisaksana and B Alisjabban  
[Open abstract](#) [View article](#) [PDF](#)

- OPEN ACCESS** 012007  
 Chronic kidney disease in HIV patients  
 S Bakri, H Rasyid, H Kasim and S Katu  
[Open abstract](#) [View article](#) [PDF](#)

- OPEN ACCESS** 012008  
 Association between CD8 T-cell subsets and CD4/CD8 ratio with HS-CRP level in HIV-infected patients on antiretroviral therapy  
 S Isabela, A Nugroho and P N Harijanto  
[Open abstract](#) [View article](#) [PDF](#)

- OPEN ACCESS** 012009  
 Correlation of depression and quality of life in HIV/AIDS patients  
 M L Siregar, V Abdullah and T Mamfaluti  
[Open abstract](#) [View article](#) [PDF](#)

- OPEN ACCESS** 012010  
 Detection of micro RNA hsa-let-7e in peripheral blood mononuclear cells infected with dengue virus serotype-2: preliminary study  
 S Masenyi, U Hadi, Kuntaman, B Yohan, N I Margyaningsih and R T Sasmono  
[Open abstract](#) [View article](#) [PDF](#)

- OPEN ACCESS** 012011  
 The worsening factors of dengue hemorrhagic fever (DHF) based on cohort study with nested case-control in a tertiary hospital  
 S Lardo, M H N E Soesatyo, Juffrie and S R Umniyati  
[Open abstract](#) [View article](#) [PDF](#)

- OPEN ACCESS** 012012  
 A comparison of the immune response between early exposed and 1 year post exposure to *Bacillus anthracis* in Indonesia  
 D Redhono, A Kusumawardani and P Dirgahayu  
[Open abstract](#) [View article](#) [PDF](#)

- OPEN ACCESS** 012013

## Dominant risk factors for malaria at Puskesmas Labuhan Ruku, Talawi Batu Bara, Indonesia

|  |                               |                              |                     |        |
|--|-------------------------------|------------------------------|---------------------|--------|
| P C Eyoer  | <a href="#">Open abstract</a> | <a href="#">View article</a> | <a href="#">PDF</a> |        |
| <b>OPEN ACCESS</b>   |                               |                              |                     | 012014 |
| <a href="#">Detection of H. Pylori infection on dyspepsia patients with IgA H. Pylori antibody</a>   |                               |                              |                     |        |
| R Loesnihari   | <a href="#">Open abstract</a> | <a href="#">View article</a> | <a href="#">PDF</a> |        |
| <b>OPEN ACCESS</b>   |                               |                              |                     | 012015 |
| <a href="#">Sequence analysis of DBL2<math>\beta</math> domain of <i>vargene</i> of Indonesian <i>Plasmodium falciparum</i></a>  |                               |                              |                     |        |
| E Sulistyarningsih, B D Romadhon, I Palupi, F Hidayah, R Dewi and A Prasetyo   | <a href="#">Open abstract</a> | <a href="#">View article</a> | <a href="#">PDF</a> |        |
| <b>OPEN ACCESS</b>   |                               |                              |                     | 012016 |
| <a href="#">The first evaluation of glucose-6-phosphate dehydrogenase deficiency (G6PD) gene mutation in malaria-endemic region at South Central Timor (SCT) district, Eastern Indonesia 2015-2016</a> |                               |                              |                     |        |
| J Hutagalung, H Kusnanto, Supargiyono, A H Sadewa and A W Satyagraha   | <a href="#">Open abstract</a> | <a href="#">View article</a> | <a href="#">PDF</a> |        |
| <b>OPEN ACCESS</b>   |                               |                              |                     | 012017 |
| <a href="#">Interaction of alphamangostin and curcumin with dihydroartemisinin as antimalaria <i>in vitro</i></a>  |                               |                              |                     |        |
| S Tjahjani, Syafruddin and R Tjokropranoto   | <a href="#">Open abstract</a> | <a href="#">View article</a> | <a href="#">PDF</a> |        |
| <b>OPEN ACCESS</b>   |                               |                              |                     | 012018 |
| <a href="#">RDT accuracy based on age group in hypoendemic malaria</a>   |                               |                              |                     |        |
| L Siahaan, M Panggabean and Y C Panggabean   | <a href="#">Open abstract</a> | <a href="#">View article</a> | <a href="#">PDF</a> |        |
| <b>OPEN ACCESS</b>   |                               |                              |                     | 012019 |
| <a href="#">The comparison of detection methods of asymptomatic malaria in hypoendemic areas</a>   |                               |                              |                     |        |
| L Siahaan, M Panggabean and Y C Panggabean   | <a href="#">Open abstract</a> | <a href="#">View article</a> | <a href="#">PDF</a> |        |
| <b>OPEN ACCESS</b>   |                               |                              |                     | 012020 |
| <a href="#">The comparative accuracy of rapid diagnostic test with microscopy to diagnose malaria in subdistrict lima puluh batubara regency North Sumatera province</a>                               |                               |                              |                     |        |
| S Rezeki and A P Pasaribu  | <a href="#">Open abstract</a> | <a href="#">View article</a> | <a href="#">PDF</a> |        |
| <b>OPEN ACCESS</b>   |                               |                              |                     | 012021 |
| <a href="#">Severe falciparum malaria: A case report</a>   |                               |                              |                     |        |
| F Arcelia, F Asymida, N F M Lubis and A P Pasaribu   | <a href="#">Open abstract</a> | <a href="#">View article</a> | <a href="#">PDF</a> |        |
| <b>OPEN ACCESS</b>   |                               |                              |                     | 012022 |
| <a href="#">Degree of agreement among sepsis diagnosis criteria in adult emergency room patients with infection</a>  |                               |                              |                     |        |
| R Sinto, A T Chandra, K C Lie and S Suwanto  | <a href="#">Open abstract</a> | <a href="#">View article</a> | <a href="#">PDF</a> |        |
| <b>OPEN ACCESS</b>   |                               |                              |                     | 012023 |
| <a href="#">Lactate clearance cut off for early mortality prediction in adult sepsis and septic shock patients</a>   |                               |                              |                     |        |
| R Sinto, D Widodo and H T Pohan  | <a href="#">Open abstract</a> | <a href="#">View article</a> | <a href="#">PDF</a> |        |
| <b>OPEN ACCESS</b>   |                               |                              |                     | 012024 |
| <a href="#">Immature platelet fraction in bacterial sepsis severity assessment</a>   |                               |                              |                     |        |
| M H Djuang, F Ginting and H Hariman  | <a href="#">Open abstract</a> | <a href="#">View article</a> | <a href="#">PDF</a> |        |
| <b>OPEN ACCESS</b>   |                               |                              |                     | 012025 |
| <a href="#">Factors associated with syphilis seropositive and Human Immunodeficiency Virus (HIV) infection among inmates at Lubuk Pakam prison, Indonesia</a>  |                               |                              |                     |        |
| E Sembiring, Y Ginting and R H Saragih   | <a href="#">Open abstract</a> | <a href="#">View article</a> | <a href="#">PDF</a> |        |
| <b>OPEN ACCESS</b>   |                               |                              |                     | 012026 |
| <a href="#">Survival of HIV/AIDS patients with antiretroviral therapy in association with first-line regimens from 2007 – 2010 in Haji Adam Malik general hospital Medan</a>                           |                               |                              |                     |        |
| T Kembaren, Y Ginting and R H Saragih  | <a href="#">Open abstract</a> | <a href="#">View article</a> | <a href="#">PDF</a> |        |
| <b>OPEN ACCESS</b>   |                               |                              |                     | 012027 |
| <a href="#">Association between red blood cell indices and CD4 count in HIV-positive reproductive women</a>  |                               |                              |                     |        |
| S N Lumbanraja and D I S Siregar   | <a href="#">Open abstract</a> | <a href="#">View article</a> | <a href="#">PDF</a> |        |
| <b>OPEN ACCESS</b>   |                               |                              |                     | 012028 |
| <a href="#">Association of serum ferritin levels with immunological status and clinical staging of HIV patients: a retrospective study</a>   |                               |                              |                     |        |
| R H Saragih, A I Mardiah, G C F Purba and H Syahrini   | <a href="#">Open abstract</a> | <a href="#">View article</a> | <a href="#">PDF</a> |        |
| <b>OPEN ACCESS</b>   |                               |                              |                     | 012029 |
| <a href="#">Correlation between the neutrophil-lymphocyte count ratio and bacterial infection in patient with human immunodeficiency virus</a>   |                               |                              |                     |        |
| D Kusnadi, M N I Liwang, S Katu, A H Mubin and R Halim   | <a href="#">Open abstract</a> | <a href="#">View article</a> | <a href="#">PDF</a> |        |
| <b>OPEN ACCESS</b>   |                               |                              |                     | 012030 |
| <a href="#">Higher plasma CD4 lymphocyte count correlates with better cognitive function in human immunodeficiency virus-acquired immunodeficiency syndrome (HIV-AIDS) patients</a>                    |                               |                              |                     |        |

|   |                              |
|---|------------------------------|
| F I Fitri, A S Rambe and A Fitri  |                              |
| <a href="#">Open abstract</a>   | <a href="#">View article</a> |
| <a href="#">PDF</a>   |                              |
| <b>OPEN ACCESS</b>  |                              |
| <b>Correlation of CD4 counts with microalbuminuria in HIV patients</b>  | 012031                       |
| S Bakri, R Haerani, K Hasyim, K Sudirman and N Tarukallo  |                              |
| <a href="#">Open abstract</a>   | <a href="#">View article</a> |
| <a href="#">PDF</a>   |                              |
| <b>OPEN ACCESS</b>  |                              |
| <b>CD4 descriptions at various clinical HIV/AIDS stages with tuberculosis and non-tuberculosis opportunistic infections at dr. Zainoel Abidin hospital in Banda Aceh, Indonesia</b> | 012032                       |
| A S Shaleh, Fahrial, M L Siregar and K F Jamil  |                              |
| <a href="#">Open abstract</a>   | <a href="#">View article</a> |
| <a href="#">PDF</a>   |                              |
| <b>OPEN ACCESS</b>  |                              |
| <b>Profile of hepatitis B and C virus infection in prisoners in Lubuk Pakam correctional facilities</b>   | 012033                       |
| I Rey, R H Saragih, R Effendi-YS, J Sembiring, G A Siregar and L H Zain   |                              |
| <a href="#">Open abstract</a>   | <a href="#">View article</a> |
| <a href="#">PDF</a>   |                              |
| <b>OPEN ACCESS</b>  |                              |
| <b>Antimicrobial resistance profile of urinary tract infection at a secondary care hospital in Medan, Indonesia</b>   | 012034                       |
| A Rahimi, R H Saragih and R Nainggolan  |                              |
| <a href="#">Open abstract</a>   | <a href="#">View article</a> |
| <a href="#">PDF</a>   |                              |
| <b>OPEN ACCESS</b>  |                              |
| <b>Associated risk factors for urinary tract infection among pregnant women at Puskesmas Kenangan, Deli Serdang district</b>  | 012035                       |
| F Laily, D Lutani, S Amelia, M R Z Tala and T A Nasution  |                              |
| <a href="#">Open abstract</a>   | <a href="#">View article</a> |
| <a href="#">PDF</a>   |                              |
| <b>OPEN ACCESS</b>  |                              |
| <b>Genetic diversity of merozoite surface protein-2 in <i>Plasmodium falciparum</i> isolates from Aceh province, Indonesia</b>  | 012036                       |
| K F Jamil, S Supargiyono, D Syafruddin, N Pratama and S Sily  |                              |
| <a href="#">Open abstract</a>   | <a href="#">View article</a> |
| <a href="#">PDF</a>   |                              |
| <b>OPEN ACCESS</b>  |                              |
| <b>The genetic polymorphism of merozoite surface protein-1 in <i>Plasmodium falciparum</i> isolates from Aceh province, Indonesia</b>   | 012037                       |
| K F Jamil, S Supargiyono, D Syafruddin, N Pratama and S Sily  |                              |
| <a href="#">Open abstract</a>   | <a href="#">View article</a> |
| <a href="#">PDF</a>   |                              |
| <b>OPEN ACCESS</b>  |                              |
| <b>Clinical profile and warning sign finding in children with severe dengue and non-severe dengue</b>   | 012038                       |
| A S Adam, S Pasaribu, H Wijaya and A P Pasaribu   |                              |
| <a href="#">Open abstract</a>   | <a href="#">View article</a> |
| <a href="#">PDF</a>   |                              |
| <b>OPEN ACCESS</b>  |                              |
| <b>Prevalence of antibiotic resistance in adult septic patients of H. Adam Malik central general hospital, Medan under Indonesia's mandatory health scheme</b>                      | 012039                       |
| N S Tillasman, R H Saragih and N Umar   |                              |
| <a href="#">Open abstract</a>   | <a href="#">View article</a> |
| <a href="#">PDF</a>   |                              |
| <b>OPEN ACCESS</b>  |                              |
| <b>The accuracy of formol-ether concentration in diagnosing soiltransmitted helminths in elementary school 27 Peusangan in Bireuen</b>  | 012040                       |
| C L Fitriani, M Panggabean and A P Pasaribu   |                              |
| <a href="#">Open abstract</a>   | <a href="#">View article</a> |
| <a href="#">PDF</a>   |                              |
| <b>OPEN ACCESS</b>  |                              |
| <b>Risk factors related to methicillin-resistant <i>Staphylococcus aureus</i> infection among inpatients at Prof. dr. R. D. Kandou general hospital Manado</b>                      | 012041                       |
| H T Utomo, A Nugroho and P N Harijanto  |                              |
| <a href="#">Open abstract</a>   | <a href="#">View article</a> |
| <a href="#">PDF</a>   |                              |
| <b>OPEN ACCESS</b>  |                              |
| <b>Clinical manifestation, serology marker &amp; microscopic agglutination test (MAT) to mortality in human leptospirosis</b>   | 012042                       |
| S A P Perdhana, R S B Susilo, Arifin, D Redhono and T Sumanjar  |                              |
| <a href="#">Open abstract</a>   | <a href="#">View article</a> |
| <a href="#">PDF</a>   |                              |
| <b>OPEN ACCESS</b>  |                              |
| <b>Correlation between chronic arthritis patients confirmed with questionnaire and serologic test of Lyme disease</b>   | 012043                       |
| H Rotan, Y Ginting, R Loesnihari, T Kembaren and B Marpaung   |                              |
| <a href="#">Open abstract</a>   | <a href="#">View article</a> |
| <a href="#">PDF</a>   |                              |
| <b>OPEN ACCESS</b>  |                              |
| <b>Serum TNF-<math>\alpha</math> levels and <i>Helicobacter pylori cagA</i> and <i>vacA</i> genes</b>   | 012044                       |
| G A Siregar, S Halim, R R Sitepu and Darmadi  |                              |
| <a href="#">Open abstract</a>   | <a href="#">View article</a> |
| <a href="#">PDF</a>   |                              |
| <b>OPEN ACCESS</b>  |                              |
| <b>Hepatitis B virus infection on male partner has negative impact on in-vitro fertilization</b>  | 012045                       |
| H P Lubis, B Halim, I Adenin, M Rusda and E Prasetyawan   |                              |
| <a href="#">Open abstract</a>   | <a href="#">View article</a> |
| <a href="#">PDF</a>   |                              |
| <b>OPEN ACCESS</b>  |                              |
| <b>Urinary glycosaminoglycans levels in women with urinary tract infection and non urinary tract infection</b>  | 012046                       |
| H P Pasaribu, A Hanifa, R Z Tala, E Ardiansyah, R Y Simanjuntak and I H Effendy   |                              |
| <a href="#">Open abstract</a>   | <a href="#">View article</a> |
| <a href="#">PDF</a>   |                              |
| <b>OPEN ACCESS</b>  |                              |
| <b>The influence of perception and peer support on STI prevention behavior (syphilis case study) in group of MSM at veterans STI-VCT clinic in Medan year 2016</b>                  | 012047                       |
| K Sukatendel, T E Napitupulu, Rusmalawati, L S Andayani and I Yustina   |                              |
| <a href="#">Open abstract</a>   | <a href="#">View article</a> |
| <a href="#">PDF</a>   |                              |

|                    |   |                              |                     |        |
|--------------------|---|------------------------------|---------------------|--------|
| <b>OPEN ACCESS</b> |   |                              |                     |        |
|                    | <a href="#">Diagnostic accuracy of tuberculous lymphadenitis fine needle aspiration biopsy confirmed by PCR as gold standard</a>                    |                              |                     | 012048 |
|                    | D Suryadi, Delyuzar and Soekimin  |                              |                     |        |
|                    | <a href="#">Open abstract</a>   | <a href="#">View article</a> | <a href="#">PDF</a> |        |
| <b>OPEN ACCESS</b> |   |                              |                     |        |
|                    | <a href="#">Cytological diagnostic of lymphadenitis tuberculosis by eosinophilic material</a>   |                              |                     | 012049 |
|                    | Delyuzar, Z Amir and L Kusumawati   |                              |                     |        |
|                    | <a href="#">Open abstract</a>   | <a href="#">View article</a> | <a href="#">PDF</a> |        |
| <b>OPEN ACCESS</b> |   |                              |                     |        |
|                    | <a href="#">Diagnostic value of nested-PCR for identification of <i>Malassezia</i> species in dandruff</a>  |                              |                     | 012050 |
|                    | N K Jusuf, T A Nasution and S Ulyyana   |                              |                     |        |
|                    | <a href="#">Open abstract</a>   | <a href="#">View article</a> | <a href="#">PDF</a> |        |
| <b>OPEN ACCESS</b> |   |                              |                     |        |
|                    | <a href="#">Pityriasis versicolor in primary school children in Medan Labuhan</a>   |                              |                     | 012051 |
|                    | Febriyanti, DA Paramita and P Eyoanoer  |                              |                     |        |
|                    | <a href="#">Open abstract</a>   | <a href="#">View article</a> | <a href="#">PDF</a> |        |
| <b>OPEN ACCESS</b> |   |                              |                     |        |
|                    | <a href="#">Antibiotic sensitivity pattern of bacteria from diabetic foot infections Haji Adam Malik central general hospital</a>                   |                              |                     | 012052 |
|                    | B A Bulolo, M A Pase and F Ginting  |                              |                     |        |
|                    | <a href="#">Open abstract</a>   | <a href="#">View article</a> | <a href="#">PDF</a> |        |
| <b>OPEN ACCESS</b> |   |                              |                     |        |
|                    | <a href="#">Comparison of microbial pattern in early and late onset neonatal sepsis in referral center Haji Adam Malik hospital Medan Indonesia</a> |                              |                     | 012053 |
|                    | B S Hasibuan  |                              |                     |        |
|                    | <a href="#">Open abstract</a>   | <a href="#">View article</a> | <a href="#">PDF</a> |        |
| <b>OPEN ACCESS</b> |   |                              |                     |        |
|                    | <a href="#">Bacterial pattern and antibiotic sensitivity in children and adolescents with infected atopic dermatitis</a>                            |                              |                     | 012054 |
|                    | C T Samosir, R H Ruslie and R E Rusli   |                              |                     |        |
|                    | <a href="#">Open abstract</a>   | <a href="#">View article</a> | <a href="#">PDF</a> |        |
| <b>OPEN ACCESS</b> |   |                              |                     |        |
|                    | <a href="#">Case report: liver abscess pyogenic after peritonitis appendix perforation</a>  |                              |                     | 012055 |
|                    | E H Damamik and F Ginting   |                              |                     |        |
|                    | <a href="#">Open abstract</a>   | <a href="#">View article</a> | <a href="#">PDF</a> |        |
| <b>OPEN ACCESS</b> |   |                              |                     |        |
|                    | <a href="#">Microbial pattern of pressure ulcer in pediatric patients</a>   |                              |                     | 012056 |
|                    | D A Paramita, Khairina and N Z Lubis  |                              |                     |        |
|                    | <a href="#">Open abstract</a>   | <a href="#">View article</a> | <a href="#">PDF</a> |        |
| <b>OPEN ACCESS</b> |   |                              |                     |        |
|                    | <a href="#">Bacterial pattern and role of laboratory parameters as marker for neonatal sepsis</a>   |                              |                     | 012057 |
|                    | R H Ruslie, D G Tjipta, C T Samosir and B S Hasibuan  |                              |                     |        |
|                    | <a href="#">Open abstract</a>   | <a href="#">View article</a> | <a href="#">PDF</a> |        |
| <b>OPEN ACCESS</b> |   |                              |                     |        |
|                    | <a href="#">Glutathione peroxidase level in patients with Helicobacter pylori-associated gastritis</a>  |                              |                     | 012058 |
|                    | Z Z Tala, G A Siregar and G P Siregar   |                              |                     |        |
|                    | <a href="#">Open abstract</a>   | <a href="#">View article</a> | <a href="#">PDF</a> |        |
| <b>OPEN ACCESS</b> |   |                              |                     |        |
|                    | <a href="#">Correlation between iron deficiency anemia and intestinal parasitic infection in school-age children in Medan</a>                       |                              |                     | 012059 |
|                    | D M Darlan, F R Ananda, M I Sari, N K Arrasyid and D I Sari   |                              |                     |        |
|                    | <a href="#">Open abstract</a>   | <a href="#">View article</a> | <a href="#">PDF</a> |        |
| <b>OPEN ACCESS</b> |   |                              |                     |        |
|                    | <a href="#">Cutaneous penicilliosis due to penicillium marneffeii infection in human immunodeficiency virus infected patients</a>                   |                              |                     | 012060 |
|                    | F A Karo, T Kembaren, R Saragih, E Sembiring, F Ginting and Y ginting   |                              |                     |        |
|                    | <a href="#">Open abstract</a>   | <a href="#">View article</a> | <a href="#">PDF</a> |        |
| <b>OPEN ACCESS</b> |   |                              |                     |        |
|                    | <a href="#">Opportunistic infection manifestation of HIV-AIDS patients in Airlangga university hospital Surabaya</a>                                |                              |                     | 012061 |
|                    | T P Asmarawati, A Putranti, B E Rachman, U Hadi and Nasronudin  |                              |                     |        |
|                    | <a href="#">Open abstract</a>   | <a href="#">View article</a> | <a href="#">PDF</a> |        |
| <b>OPEN ACCESS</b> |   |                              |                     |        |
|                    | <a href="#">Opportunistic infection of HIV/AIDS patients in West Papua</a>  |                              |                     | 012062 |
|                    | A M Witaningrum, S Q Khairunisa, M Q Yunifair, R Bramanthi, B E Rachman and Nasronudin  |                              |                     |        |
|                    | <a href="#">Open abstract</a>   | <a href="#">View article</a> | <a href="#">PDF</a> |        |
| <b>OPEN ACCESS</b> |   |                              |                     |        |
|                    | <a href="#">Oral candidiasis as clinical manifestation of HIV/AIDS infection in Airlangga University hospital patients</a>                          |                              |                     | 012063 |
|                    | A Putranti, T P Asmarawati, B E Rachman, U Hadi and Nasronudin  |                              |                     |        |
|                    | <a href="#">Open abstract</a>   | <a href="#">View article</a> | <a href="#">PDF</a> |        |
| <b>OPEN ACCESS</b> |   |                              |                     |        |
|                    | <a href="#">Surgical treatment for pulmonary aspergilloma in seventeenth years old female: case report</a>  |                              |                     | 012064 |
|                    | G N Yami, M Lubis and C Yoel  |                              |                     |        |
|                    | <a href="#">Open abstract</a>   | <a href="#">View article</a> | <a href="#">PDF</a> |        |
| <b>OPEN ACCESS</b> |   |                              |                     |        |
|                    | <a href="#">Association of serologic and hematologic test results in dengue infant patients in RSUP. Dr. Hasan Sadikin Bandung</a>                  |                              |                     | 012065 |
|                    | A Alam, I Handayani and A R Indrati   |                              |                     |        |

|  |                              |                     |        |
|--|------------------------------|---------------------|--------|
| <a href="#">Open abstract</a>  | <a href="#">View article</a> | <a href="#">PDF</a> |        |
| <b>OPEN ACCESS</b>   |                              |                     |        |
| <b>Weil's disease in a 36 years old female: a case report</b>  |                              |                     | 012066 |
| S Rozalena, L Handayani, A Arman, M Permata and H Hudari   |                              |                     |        |
| <a href="#">Open abstract</a>  | <a href="#">View article</a> | <a href="#">PDF</a> |        |
| <b>OPEN ACCESS</b>   |                              |                     |        |
| <b>Diagnosis and management of tetanus outside the intensive care unit: a case report</b>  |                              |                     | 012067 |
| T E Bravo, M L Siregar and K F Jamil   |                              |                     |        |
| <a href="#">Open abstract</a>  | <a href="#">View article</a> | <a href="#">PDF</a> |        |
| <b>OPEN ACCESS</b>   |                              |                     |        |
| <b>Correlation between hematologic profile and transaminase enzymes with hospitalization duration dengue</b>   |                              |                     | 012068 |
| E Tinambunan, Suryani, S Kato, R Halim, A H Mubin and Sahyuddin  |                              |                     |        |
| <a href="#">Open abstract</a>  | <a href="#">View article</a> | <a href="#">PDF</a> |        |
| <b>OPEN ACCESS</b>   |                              |                     |        |
| <b>A successful therapy for severe malaria accompanied by malaria-related acute kidney injury (MAKI) complications: a case report</b>  |                              |                     | 012069 |
| A Syahputra, M L Siregar and K F Jamil   |                              |                     |        |
| <a href="#">Open abstract</a>  | <a href="#">View article</a> | <a href="#">PDF</a> |        |
| <b>OPEN ACCESS</b>   |                              |                     |        |
| <b><i>Plasmodium falciparum</i>-induced severe malaria with acute kidney injury and jaundice: a case report</b>  |                              |                     | 012070 |
| A Baswin, M L Siregar and K F Jamil  |                              |                     |        |
| <a href="#">Open abstract</a>  | <a href="#">View article</a> | <a href="#">PDF</a> |        |
| <b>OPEN ACCESS</b>   |                              |                     |        |
| <b>Effects of school-based deworming on hemoglobin level, growth development and school performance of primary school children in North Sumatera</b>                                 |                              |                     | 012071 |
| A P Pasaribu, J Angellee and S Pasaribu  |                              |                     |        |
| <a href="#">Open abstract</a>  | <a href="#">View article</a> | <a href="#">PDF</a> |        |
| <b>OPEN ACCESS</b>   |                              |                     |        |
| <b>Necrotizing fasciitis in nephritic syndrome: a case report</b>  |                              |                     | 012072 |
| J Junaedi and A P Pasaribu   |                              |                     |        |
| <a href="#">Open abstract</a>  | <a href="#">View article</a> | <a href="#">PDF</a> |        |
| <b>OPEN ACCESS</b>   |                              |                     |        |
| <b>Case report: patient with Weil's disease, chest pain, hepatitis b, hepatorenal syndrome, and electrolyte imbalance</b>  |                              |                     | 012073 |
| Mustopa, R S B Susilo, Arifin, D Redhono and T Sumandjar   |                              |                     |        |
| <a href="#">Open abstract</a>  | <a href="#">View article</a> | <a href="#">PDF</a> |        |
| <b>OPEN ACCESS</b>   |                              |                     |        |
| <b>The effect of bacterial sepsis severity on triglyceride value</b>   |                              |                     | 012074 |
| R Fahila, T Kembaren and A Rahimi  |                              |                     |        |
| <a href="#">Open abstract</a>  | <a href="#">View article</a> | <a href="#">PDF</a> |        |
| <b>OPEN ACCESS</b>   |                              |                     |        |
| <b>Cutaneous larva migrans in a gardener</b>   |                              |                     | 012075 |
| I Agustiningtyas   |                              |                     |        |
| <a href="#">Open abstract</a>  | <a href="#">View article</a> | <a href="#">PDF</a> |        |
| <b>OPEN ACCESS</b>   |                              |                     |        |
| <b>Prolonged fever and involuntary weight loss as manifestations of bacterial endocarditis: A case report</b>  |                              |                     | 012076 |
| N M D D Sukmawati, T P Merati, A Somia, S Utama and Y Gayatri  |                              |                     |        |
| <a href="#">Open abstract</a>  | <a href="#">View article</a> | <a href="#">PDF</a> |        |
| <b>OPEN ACCESS</b>   |                              |                     |        |
| <b>Incidence of multidrug-resistant, extensively drug-resistant and pan-drug-resistant bacteria in children hospitalized at Dr. Hasan Sadikin general hospital Bandung Indonesia</b> |                              |                     | 012077 |
| R Adrizain, F Suryaningrat, A Alam and D Setiabudi   |                              |                     |        |
| <a href="#">Open abstract</a>  | <a href="#">View article</a> | <a href="#">PDF</a> |        |
| <b>OPEN ACCESS</b>   |                              |                     |        |
| <b>Severe malaria vivax with sepsis bacterial: a case report</b>   |                              |                     | 012078 |
| P Tarigan and F Ginting  |                              |                     |        |
| <a href="#">Open abstract</a>  | <a href="#">View article</a> | <a href="#">PDF</a> |        |
| <b>OPEN ACCESS</b>   |                              |                     |        |
| <b>Chronic diarrhea caused by <i>Blastocystis hominis</i> and <i>Cryptosporidium sp.</i> in immunocompetent patient-a case report</b>  |                              |                     | 012079 |
| Y Andriyani, M F Rozi, R H Saragih and D M Darlan  |                              |                     |        |
| <a href="#">Open abstract</a>  | <a href="#">View article</a> | <a href="#">PDF</a> |        |
| <b>OPEN ACCESS</b>   |                              |                     |        |
| <b>Falciparum malaria infection with invasive pulmonary aspergillosis in immunocompetent host – case report</b>  |                              |                     | 012080 |
| Y Andriyani  |                              |                     |        |
| <a href="#">Open abstract</a>  | <a href="#">View article</a> | <a href="#">PDF</a> |        |
| <b>OPEN ACCESS</b>   |                              |                     |        |
| <b>Prolonged fever in peritoneal tuberculosis: A case report</b>   |                              |                     | 012081 |
| U Zein, S Irwandi, H Habib, H Lim, M Pasha, I Janis, R H Saragih, Y Ginting and R Effendy-Y S  |                              |                     |        |
| <a href="#">Open abstract</a>  | <a href="#">View article</a> | <a href="#">PDF</a> |        |
| <b>OPEN ACCESS</b>   |                              |                     |        |
| <b>Rare location of spondylitis tuberculosis;atlanto-axial, sacral and cervico-thoracic junction</b>   |                              |                     | 012082 |
| Victorio, M D Nasution, S Ibrahim and R Dharmajaya   |                              |                     |        |
| <a href="#">Open abstract</a>  | <a href="#">View article</a> | <a href="#">PDF</a> |        |
| <b>OPEN ACCESS</b>   |                              |                     |        |

|  |        |
|--|--------|
| Case report : tuberculosis liver abscess in male alcoholism patient  | 012083 |
| W P Siahaan and F Ginting<br>Open abstract View article PDF  |        |
| <b>OPEN ACCESS</b><br>Management of multidrug-resistant tuberculosis in human immunodeficiency virus patients              | 012084 |
| K F Jamil<br>Open abstract View article PDF  |        |
| <b>OPEN ACCESS</b><br>Diagnosis and management of sepsis   | 012085 |
| Arifm<br>Open abstract View article PDF  |        |
| <b>OPEN ACCESS</b><br>Management of tetanus complication   | 012086 |
| I K A Somia<br>Open abstract View article PDF  |        |
| <b>OPEN ACCESS</b><br>Management of hepatitis C infection in the era of direct-acting antiviral therapy                    | 012087 |
| L H Zain and T Sungkar<br>Open abstract View article PDF   |        |
| <b>OPEN ACCESS</b><br>The role of drugs in HIV prevention  | 012088 |
| T Kembaren<br>Open abstract View article PDF   |        |
| <b>OPEN ACCESS</b><br>Diagnostic approach in leptospirosis patients  | 012089 |
| E Sembiring<br>Open abstract View article PDF  |        |
| <b>OPEN ACCESS</b><br>Laboratory diagnostics of malaria  | 012090 |
| L Siahaan<br>Open abstract View article PDF  |        |
| <b>OPEN ACCESS</b><br>Antimicrobial resistance problems in typhoid fever   | 012091 |
| R H Saragih and G C F Purba<br>Open abstract View article PDF  |        |
| <b>OPEN ACCESS</b><br>Ventriculoperitoneal shunt infection in Haji Adam Malik Hospital, Medan                              | 012092 |
| R Dharmajaya<br>Open abstract View article PDF   |        |
| <b>OPEN ACCESS</b><br>Management of a patient with dengue virus infection and tetralogy of Fallot                          | 012093 |
| M V Arfijanto, E Oktiawan, Purwati and U Hadi<br>Open abstract View article PDF  |        |
| <b>OPEN ACCESS</b><br><b>An expanded dengue syndrome patient with manifestation myocarditis: case report</b>               | 012094 |
| M V Arifijanto, H P Luqmana, M Rusli and Bramantono<br>Open abstract View article PDF                                      |        |
| <b>OPEN ACCESS</b><br>Tuberculous spondylitis in Haji Adam Malik hospital, Medan   | 012095 |
| R Dharmajaya<br>Open abstract View article PDF   |        |
| <b>OPEN ACCESS</b><br>Vancomycin-resistant <i>Staphylococcus aureus</i> (VRSA) in hepatic cirrhosis patient: a case report | 012096 |
| M Ramazoni, M L Siregar and K F Jamil<br>Open abstract View article PDF  |        |
| <b>OPEN ACCESS</b><br>Hypovitaminosis D increases TB co-infection risk on HIV patients                                     | 012097 |
| Y A A A Gayatri, D D Sukmawati, S M Utama, I K A Somia and T P Merati<br>Open abstract View article PDF                    |        |
| <b>OPEN ACCESS</b><br>Therapeutic principles of primaquine against relapse of <i>Plasmodium vivax</i> malaria              | 012098 |
| J K Baird<br>Open abstract View article PDF  |        |
| <b>OPEN ACCESS</b><br>Antiretroviral Resistance in HIV/AIDS Patients   | 012099 |
| W Manosuthi, MD<br>Open abstract View article PDF  |        |
| <b>Social and Environmental Impact on Infectious Diseases</b>  |        |
| <b>OPEN ACCESS</b><br>Social acceptance and quality of life of leprosy patient   | 012100 |
| P C Eyanoe   |        |

|  |                              |                     |        |
|--|------------------------------|---------------------|--------|
| <a href="#">Open abstract</a>  | <a href="#">View article</a> | <a href="#">PDF</a> |        |
| <b>OPEN ACCESS</b>   |                              |                     |        |
| <b>Social acceptance among tuberculosis patients at Puskesmas Amplas Medan, Indonesia</b>  |                              |                     | 012101 |
| P C Eyoer  |                              |                     |        |
| <a href="#">Open abstract</a>  | <a href="#">View article</a> | <a href="#">PDF</a> |        |
| <b>Infection Prevention and Control</b>  |                              |                     |        |
| <b>OPEN ACCESS</b>   |                              |                     |        |
| <b>Community empowerment program for increasing knowledge and awareness of tuberculosis patients, cadres and community in Medan city</b>   |                              |                     | 012102 |
| J Harahap, R Amelia, A S Wahyuni and L S Andayani  |                              |                     |        |
| <a href="#">Open abstract</a>  | <a href="#">View article</a> | <a href="#">PDF</a> |        |
| <b>OPEN ACCESS</b>   |                              |                     |        |
| <b>Influence knowledge and behavior of TB medical personnels' concordance principle based communications skill at primary healthcare, Medan, Indonesia</b>                                 |                              |                     | 012103 |
| A S Wahyuni, N N Soeroso, I Alona, Y Yunanda and I Siregar   |                              |                     |        |
| <a href="#">Open abstract</a>  | <a href="#">View article</a> | <a href="#">PDF</a> |        |
| <b>OPEN ACCESS</b>   |                              |                     |        |
| <b>Protection status against hepatitis B infection assessed from anti-HBs level, history of vaccination and history of infection based on anti-HBc in medical students</b>                 |                              |                     | 012104 |
| Annisa, LH Zain and R Loesihari  |                              |                     |        |
| <a href="#">Open abstract</a>  | <a href="#">View article</a> | <a href="#">PDF</a> |        |
| <b>OPEN ACCESS</b>   |                              |                     |        |
| <b>How to Manage and Control Healthcare Associated Infections</b>  |                              |                     | 012105 |
| L Wijaya   |                              |                     |        |
| <a href="#">Open abstract</a>  | <a href="#">View article</a> | <a href="#">PDF</a> |        |
| <b>Nephrology</b>  |                              |                     |        |
| <b>OPEN ACCESS</b>   |                              |                     |        |
| <b>The latest development of antihypertensive medication</b>   |                              |                     | 012106 |
| S Nasution, I Rey and R Effendi-YS   |                              |                     |        |
| <a href="#">Open abstract</a>  | <a href="#">View article</a> | <a href="#">PDF</a> |        |
| <b>OPEN ACCESS</b>   |                              |                     |        |
| <b>Influence of combination hemodialysis/hemoperfusion against score of depression in regular hemodialysis patients</b>  |                              |                     | 012107 |
| T D Permatasari, A Thamrin and H Hanum   |                              |                     |        |
| <a href="#">Open abstract</a>  | <a href="#">View article</a> | <a href="#">PDF</a> |        |
| <b>OPEN ACCESS</b>   |                              |                     |        |
| <b>Association between neutrophil-to-lymphocyte ratio and survival rate patient hemodialysis in Adam Malik general hospital in 2016</b>  |                              |                     | 012108 |
| H Sibarani, R A Muzasti and H R Lubis  |                              |                     |        |
| <a href="#">Open abstract</a>  | <a href="#">View article</a> | <a href="#">PDF</a> |        |
| <b>OPEN ACCESS</b>   |                              |                     |        |
| <b>Neutrophil to lymphocyte ratio as the main predictor of peripheral artery disease in regular hemodialysis patients</b>  |                              |                     | 012109 |
| R H Siregar and R A Muzasti  |                              |                     |        |
| <a href="#">Open abstract</a>  | <a href="#">View article</a> | <a href="#">PDF</a> |        |
| <b>OPEN ACCESS</b>   |                              |                     |        |
| <b>Comparison of bioimpedance analysis scan, hemoglobin and urea reduction ratio in hemodialysis patients following and not following monitoring program for improving quality of life</b> |                              |                     | 012110 |
| R A Muzasti and H R Lubis  |                              |                     |        |
| <a href="#">Open abstract</a>  | <a href="#">View article</a> | <a href="#">PDF</a> |        |
| <b>OPEN ACCESS</b>   |                              |                     |        |
| <b>Cellulitis as complication of nephrotic syndrome in a pediatric patient</b>   |                              |                     | 012111 |
| R S Siregar, K R Daulay, B Siregar, O R Ramayani and P C Eyoer   |                              |                     |        |
| <a href="#">Open abstract</a>  | <a href="#">View article</a> | <a href="#">PDF</a> |        |
| <b>OPEN ACCESS</b>   |                              |                     |        |
| <b>Prevalence of recurrent urinary tract infection in children with congenital anomalies of the kidney and urinary tract (CAKUT)</b>   |                              |                     | 012112 |
| O R Ramayani, P C Eyoer, K Ritarwan, B Siregar and R S Siregar   |                              |                     |        |
| <a href="#">Open abstract</a>  | <a href="#">View article</a> | <a href="#">PDF</a> |        |
| <b>OPEN ACCESS</b>   |                              |                     |        |
| <b>Pregnancy in chronic dialysis, late diagnosis, and other problems</b>   |                              |                     | 012113 |
| S Ramadani, A T Nasution, S Nasution and H R Lubis   |                              |                     |        |
| <a href="#">Open abstract</a>  | <a href="#">View article</a> | <a href="#">PDF</a> |        |
| <b>OPEN ACCESS</b>   |                              |                     |        |
| <b>Correlation between ultrafiltration rate and phase angle measured by BIA in chronic kidney disease patients on regular hemodialysis</b>   |                              |                     | 012114 |
| B R Nasution and A R Lubis   |                              |                     |        |
| <a href="#">Open abstract</a>  | <a href="#">View article</a> | <a href="#">PDF</a> |        |
| <b>OPEN ACCESS</b>   |                              |                     |        |
| <b>Comparison of cardiovascular risk factors in maintenance hemodialysis patients based on phase angle of bioimpedance analysis</b>  |                              |                     | 012115 |
| R A Muzasti and H R Lubis  |                              |                     |        |
| <a href="#">Open abstract</a>  | <a href="#">View article</a> | <a href="#">PDF</a> |        |
| <b>OPEN ACCESS</b>   |                              |                     |        |
| <b>Association of phase angle on bioelectrical impedance analysis and dialysis frequency with survival of chronic hemodialysis patients</b>  |                              |                     | 012116 |
| R A Muzasti and H R Lubis  |                              |                     |        |
| <a href="#">Open abstract</a>  | <a href="#">View article</a> | <a href="#">PDF</a> |        |
| <b>Cardiology</b>  |                              |                     |        |
| <b>OPEN ACCESS</b>   |                              |                     |        |
| <b>Adherence to the European Society of Cardiology guidelines for the treatment of chronic heart failure</b>   |                              |                     | 012117 |

A Sitepu and K Hamdani

[Open abstract](#) [View article](#) [PDF](#)

**OPEN ACCESS**  
[Accuracy criteria voltage electrocardiography left ventricular hypertrophy to distinguish types of left ventricular hypertrophy geometry](#) 012118

O Tumbur, Z Safri and R Hassan

[Open abstract](#) [View article](#) [PDF](#)

**OPEN ACCESS**  
[Correlation of symptom depression levels with mean platelet volume rate on patients of acute coronary syndrome](#) 012119

L Hasugian, H Hanum, W Hamida and Z Safri

[Open abstract](#) [View article](#) [PDF](#)

**OPEN ACCESS**  
[Cardiac tamponade as a manifestation of extrapulmonary tuberculosis in  \$\beta\$  thalassemia major patient](#) 012120

S Harahap, A Pramudita and Lusiani

[Open abstract](#) [View article](#) [PDF](#)

**OPEN ACCESS**  
[Awareness of antiplatelet resistance in patient with repeated episodes of thrombotic events](#) 012121

NN Dalimunthe, R Hamonangan, D Antono, I Prasetya and L Rusdi

[Open abstract](#) [View article](#) [PDF](#)

**OPEN ACCESS**  
[Diagnostic value of mean platelet volume \(MPV\) to troponin T inpatients with acute coronary syndrome](#) 012122

D Aryanto, R Isnanta, Z Safri and R Hasan

[Open abstract](#) [View article](#) [PDF](#)

**OPEN ACCESS**  
[PREDICE score as a predictor of 90 days mortality in patients with heart failure](#) 012123

D P S Purba and R Hasan

[Open abstract](#) [View article](#) [PDF](#)

**OPEN ACCESS**  
[High-sensitivity c-reactive protein \(hs-CRP\) value with 90 days mortality in patients with heart failure](#) 012124

Nursyamsiah and R Hasan

[Open abstract](#) [View article](#) [PDF](#)

**OPEN ACCESS**  
[Management of coronary artery disease](#) 012125

Z Safri

[Open abstract](#) [View article](#) [PDF](#)

#### Hematology and Oncology

**OPEN ACCESS**  
[Relation of polymorphism C1236T and C3435T in ABCB1 gene with bone marrow suppression in chemotherapy-treated breast cancer patients](#) 012126

S Syarifah, T Hamdi, T Widyawati, M I Sari and D R Anggraini

[Open abstract](#) [View article](#) [PDF](#)

**OPEN ACCESS**  
[m-RNA mammaglobin expression in metastatic breast cancer patient at Medan city, Indonesia](#) 012127

S Rimbun and Y Siregar

[Open abstract](#) [View article](#) [PDF](#)

**OPEN ACCESS**  
[Pre-menopausal triple-negative breast cancer at HAM hospital medan](#) 012128

Betty, L I Laksmi and K B Siregar

[Open abstract](#) [View article](#) [PDF](#)

**OPEN ACCESS**  
[P38 mitogen-activated protein kinase \(p38 MAPK\) overexpression in clinical staging of nasopharyngeal carcinoma](#) 012129

Farhat, R A Asnir, A Yudhistira, E R Daulay, M M Muzakkir and S Yulius

[Open abstract](#) [View article](#) [PDF](#)

**OPEN ACCESS**  
[Evaluation of matrix metalloproteinase-9 expressions in nasopharyngeal carcinoma patients](#) 012130

Farhat, R A Asnir, A Yudhistira, E R Daulay, D Puspitasari and S Yulius

[Open abstract](#) [View article](#) [PDF](#)

**OPEN ACCESS**  
[Differences of wells scores accuracy, caprini scores and padua scores in deep vein thrombosis diagnosis](#) 012131

D Gatot and A I Mardia

[Open abstract](#) [View article](#) [PDF](#)

**OPEN ACCESS**  
[Late diagnosis of multiple myeloma: a case report](#) 012132

A Syahreza, D Gatot and A I Mardia

[Open abstract](#) [View article](#) [PDF](#)

**OPEN ACCESS**  
[Skin cancer patients profile at faculty of medicine university of North Sumatera pathology anatomy laboratory and Haji Adam Malik general hospital in the year of 2012-2015](#) 012133

E K Sembiring, Delyuzar and Soekimin

[Open abstract](#) [View article](#) [PDF](#)

**OPEN ACCESS**  
[Comparison platelet indices in diabetic patients with and without diabetic foot ulcer](#) 012134

A I Mardia, D Gatot and D Lindarto



|   |                              |                     |        |
|---|------------------------------|---------------------|--------|
| <a href="#">Open abstract</a>   | <a href="#">View article</a> | <a href="#">PDF</a> |        |
| <b>OPEN ACCESS</b>  |                              |                     |        |
| <a href="#">Gamma-glutamyltranspeptidase to platelet ratio and albumin to gamma-glutamyltranspeptidase between degrees of the Barcelona clinic liver cancer on hepatocellular carcinoma patients in Haji Adam Malik general hospital Medan during 2015-2016</a> |                              |                     | 012135 |
| G A Siregar and R H Siregar   |                              |                     |        |
| <a href="#">Open abstract</a>   | <a href="#">View article</a> | <a href="#">PDF</a> |        |
| <b>OPEN ACCESS</b>  |                              |                     |        |
| <a href="#">Diagnostic accuracy of lymphoma established by fine-needle aspiration cytological biopsy</a>  |                              |                     | 012136 |
| Delyuzar, Z Amir and D Suryadi  |                              |                     |        |
| <a href="#">Open abstract</a>   | <a href="#">View article</a> | <a href="#">PDF</a> |        |
| <b>OPEN ACCESS</b>  |                              |                     |        |
| <a href="#">Factors associated with tumor size of hepatocellular carcinoma</a>  |                              |                     | 012137 |
| G A Siregar and B A Baulolo   |                              |                     |        |
| <a href="#">Open abstract</a>   | <a href="#">View article</a> | <a href="#">PDF</a> |        |
| <b>OPEN ACCESS</b>  |                              |                     |        |
| <a href="#">Diagnostic test pepsinogen I and combination with tumor marker CEA in gastric cancer</a>  |                              |                     | 012138 |
| J Sembiring, K Sarumpaet and R A Ganie  |                              |                     |        |
| <a href="#">Open abstract</a>   | <a href="#">View article</a> | <a href="#">PDF</a> |        |
| <b>Pulmonology</b>  |                              |                     |        |
| <b>OPEN ACCESS</b>  |                              |                     |        |
| <a href="#">Effect of smoking and alcohol consumption on pulmonary tuberculosis among Batak ethnic population in Medan, Indonesia</a>   |                              |                     | 012139 |
| B Y M Sinaga, Y Siregar, M Amin and S Sarumpaet   |                              |                     |        |
| <a href="#">Open abstract</a>   | <a href="#">View article</a> | <a href="#">PDF</a> |        |
| <b>OPEN ACCESS</b>  |                              |                     |        |
| <a href="#">Vitamin C supplementation improve the sputum conversion culture rate in pulmonary tuberculosis treatment while rifampicin susceptible</a>   |                              |                     | 012140 |
| L Susanto, Y Siregar and L Kusumawati   |                              |                     |        |
| <a href="#">Open abstract</a>   | <a href="#">View article</a> | <a href="#">PDF</a> |        |
| <b>OPEN ACCESS</b>  |                              |                     |        |
| <a href="#">The correlation between albumin levels with 30 days mortality in community acquired pneumonia patients</a>  |                              |                     | 012141 |
| N Damayanti, A Abidin and E N Keliat  |                              |                     |        |
| <a href="#">Open abstract</a>   | <a href="#">View article</a> | <a href="#">PDF</a> |        |
| <b>OPEN ACCESS</b>  |                              |                     |        |
| <a href="#">Quality of life of pulmonary TB patients after intensive phase treatment in the health centers of Medan city, Indonesia</a>   |                              |                     | 012142 |
| A S Wahyuni, N Soeroso, J Harahap, R Amelia and I Alona   |                              |                     |        |
| <a href="#">Open abstract</a>   | <a href="#">View article</a> | <a href="#">PDF</a> |        |
| <b>OPEN ACCESS</b>  |                              |                     |        |
| <a href="#">Serum vitamin d level and susceptibility to multidrug-resistant tuberculosis among household contacts</a>   |                              |                     | 012143 |
| N Herlina, B Y M Sinaga, P Siagian and E Mutiara  |                              |                     |        |
| <a href="#">Open abstract</a>   | <a href="#">View article</a> | <a href="#">PDF</a> |        |
| <b>OPEN ACCESS</b>  |                              |                     |        |
| <a href="#">Vitamin D status did not related to calcium status in active tuberculosis patients in North Sumatera, Indonesia</a>   |                              |                     | 012144 |
| Dina Keumala Sari and Nurfida Khairina Arrasyid   |                              |                     |        |
| <a href="#">Open abstract</a>   | <a href="#">View article</a> | <a href="#">PDF</a> |        |
| <b>OPEN ACCESS</b>  |                              |                     |        |
| <a href="#">Description of polymerase chain reaction and sequencing DNA <i>Mycobacterium tuberculosis</i> from specimen sputum of tuberculosis patients in Medan</a>  |                              |                     | 012145 |
| Lily, Y Siregar and S Ilyas   |                              |                     |        |
| <a href="#">Open abstract</a>   | <a href="#">View article</a> | <a href="#">PDF</a> |        |
| <b>OPEN ACCESS</b>  |                              |                     |        |
| <a href="#">The influence of mutation gene rpoB of <i>Mycobacterium tuberculosis</i> cluster I (507-534) on the elimination 25-desacetyl rifampicin in urine of tuberculosis subjects</a>   |                              |                     | 012146 |
| Lily, B Y M Sinaga, D Ardinata and Y Siregar  |                              |                     |        |
| <a href="#">Open abstract</a>   | <a href="#">View article</a> | <a href="#">PDF</a> |        |
| <b>OPEN ACCESS</b>  |                              |                     |        |
| <a href="#">Interferon-gamma and interleukin-10 profile of children with tuberculosis in North Sumatera, Indonesia</a>  |                              |                     | 012147 |
| R S Daulay and R M Daulay   |                              |                     |        |
| <a href="#">Open abstract</a>   | <a href="#">View article</a> | <a href="#">PDF</a> |        |
| <b>OPEN ACCESS</b>  |                              |                     |        |
| <a href="#">Factors related to successful treatment of drug-resistance tuberculosis in H. Adam Malik hospital, Medan, Indonesia</a>   |                              |                     | 012148 |
| M P F Manurung, P Siagian, B Y M Sinaga and E Mutiara   |                              |                     |        |
| <a href="#">Open abstract</a>   | <a href="#">View article</a> | <a href="#">PDF</a> |        |
| <b>OPEN ACCESS</b>  |                              |                     |        |
| <a href="#">Relationship between depression with FEV1 percent predicted and BODE index in chronic obstructive pulmonary disease</a>   |                              |                     | 012149 |
| H Gunawan, H Hanum, A Abidin and W Hanida   |                              |                     |        |
| <a href="#">Open abstract</a>   | <a href="#">View article</a> | <a href="#">PDF</a> |        |
| <b>OPEN ACCESS</b>  |                              |                     |        |
| <a href="#">The variability of expiration peak flow of workers employed in the washing installation (laundry) of Haji Adam Malik general hospital Medan</a>   |                              |                     | 012150 |
| W Saragih, A P Tarigan, N Nainggolan and P C Eyoanoer   |                              |                     |        |
| <a href="#">Open abstract</a>   | <a href="#">View article</a> | <a href="#">PDF</a> |        |
| <b>OPEN ACCESS</b>  |                              |                     |        |
| <a href="#">Difference in serum magnesium level among patients with stable chronic obstructive pulmonary disease (COPD) and exacerbated COPD</a>  |                              |                     | 012151 |
| R Sanowara, E N Keliat and A Abidin   |                              |                     |        |

|   |                              |                     |        |
|---|------------------------------|---------------------|--------|
| <a href="#">Open abstract</a>   | <a href="#">View article</a> | <a href="#">PDF</a> |        |
| <b>OPEN ACCESS</b>  |                              |                     |        |
| <b>Association between level of interferon gamma and acid-fast bacillipositivity in pulmonary tuberculosis</b>  |                              |                     | 012152 |
| N B Priwahyuningtyas, B Y M Sinaga, P Pandia and P C Eyaoner  |                              |                     |        |
| <a href="#">Open abstract</a>   | <a href="#">View article</a> | <a href="#">PDF</a> |        |
| <b>OPEN ACCESS</b>  |                              |                     |        |
| <b>Respiratory failure in tetanic patient: maintenance of airway problem in intensive care unit setting</b>   |                              |                     | 012153 |
| I N Utami, Arifin, R S B Susilo, D Redhono and T Sumandjar  |                              |                     |        |
| <a href="#">Open abstract</a>   | <a href="#">View article</a> | <a href="#">PDF</a> |        |
| <b>OPEN ACCESS</b>  |                              |                     |        |
| <b>Obstructive lung disease as a complication in post pulmonary TB</b>  |                              |                     | 012154 |
| A P Tarigan, P Pandia, P Eyaoner, D Tina, R Pratama, A Fresia, Tamara and Silvanna  |                              |                     |        |
| <a href="#">Open abstract</a>   | <a href="#">View article</a> | <a href="#">PDF</a> |        |
| <b>Allergy-Immunology</b>   |                              |                     |        |
| <b>OPEN ACCESS</b>  |                              |                     |        |
| <b>Henoch-schönlein purpura (HSP) in an adult</b>   |                              |                     | 012155 |
| C A Negara and Z Zubir  |                              |                     |        |
| <a href="#">Open abstract</a>   | <a href="#">View article</a> | <a href="#">PDF</a> |        |
| <b>OPEN ACCESS</b>  |                              |                     |        |
| <b>Sjogren's syndrome: a case report</b>  |                              |                     | 012156 |
| A Sunata and B Marpaung   |                              |                     |        |
| <a href="#">Open abstract</a>   | <a href="#">View article</a> | <a href="#">PDF</a> |        |
| <b>OPEN ACCESS</b>  |                              |                     |        |
| <b>Differences of serum procalcitonin levels between bacterial infection and flare in systemic lupus erythematosus patients</b>                                     |                              |                     | 012157 |
| J Patrick, B Marpaung and Y Ginting   |                              |                     |        |
| <a href="#">Open abstract</a>   | <a href="#">View article</a> | <a href="#">PDF</a> |        |
| <b>OPEN ACCESS</b>  |                              |                     |        |
| <b>Systemic lupus erythematosus in a male patient</b>   |                              |                     | 012158 |
| H Sibarani and Z Zubir  |                              |                     |        |
| <a href="#">Open abstract</a>   | <a href="#">View article</a> | <a href="#">PDF</a> |        |
| <b>OPEN ACCESS</b>  |                              |                     |        |
| <b>Scleroderma: a case report</b>   |                              |                     | 012159 |
| T A Harahap and B Marpaung  |                              |                     |        |
| <a href="#">Open abstract</a>   | <a href="#">View article</a> | <a href="#">PDF</a> |        |
| <b>OPEN ACCESS</b>  |                              |                     |        |
| <b>The relationship between increased levels of Anti-dsDNA with clinical manifestation in patients with SLE in Haji Adam Malik General Hospital Medan</b>           |                              |                     | 012160 |
| B Marpaung and J Patrick  |                              |                     |        |
| <a href="#">Open abstract</a>   | <a href="#">View article</a> | <a href="#">PDF</a> |        |
| <b>Endocrinology</b>  |                              |                     |        |
| <b>OPEN ACCESS</b>  |                              |                     |        |
| <b>Pathophysiology diabetic foot ulcer</b>  |                              |                     | 012161 |
| S Syafril   |                              |                     |        |
| <a href="#">Open abstract</a>   | <a href="#">View article</a> | <a href="#">PDF</a> |        |
| <b>OPEN ACCESS</b>  |                              |                     |        |
| <b>Holistic management of diabetic foot</b>   |                              |                     | 012162 |
| D Lindarto  |                              |                     |        |
| <a href="#">Open abstract</a>   | <a href="#">View article</a> | <a href="#">PDF</a> |        |
| <b>OPEN ACCESS</b>  |                              |                     |        |
| <b>Increased serum levels of interleukin-17 and transforming growth factor-<math>\beta</math> in patients with Graves' disease</b>                                  |                              |                     | 012163 |
| D Elvira, E Nasrul, Y Sofyan, E Decroli and E Darwin  |                              |                     |        |
| <a href="#">Open abstract</a>   | <a href="#">View article</a> | <a href="#">PDF</a> |        |
| <b>OPEN ACCESS</b>  |                              |                     |        |
| <b>Estradiol to testosterone ratio in metabolic syndrome men aged started 40 years above</b>  |                              |                     | 012164 |
| R Kusuma, Y Siregar and Mardianto   |                              |                     |        |
| <a href="#">Open abstract</a>   | <a href="#">View article</a> | <a href="#">PDF</a> |        |
| <b>OPEN ACCESS</b>  |                              |                     |        |
| <b>Association of fibrinogen with HbA1C in diabetic foot ulcer</b>  |                              |                     | 012165 |
| M A Pase, D Gatot and D Lindarto  |                              |                     |        |
| <a href="#">Open abstract</a>   | <a href="#">View article</a> | <a href="#">PDF</a> |        |
| <b>OPEN ACCESS</b>  |                              |                     |        |
| <b>Comparison quality of life patients treated with insulin and oral hypoglycemic drugs</b>   |                              |                     | 012166 |
| A W Harahap and M S Nasution  |                              |                     |        |
| <a href="#">Open abstract</a>   | <a href="#">View article</a> | <a href="#">PDF</a> |        |
| <b>OPEN ACCESS</b>  |                              |                     |        |
| <b>Positive correlation between retinol binding protein 4 (RBP4) and triglyceride level in central obesity</b>  |                              |                     | 012167 |
| S Oktaria, D K Sari, D Dalimunthe and P C Eyaoner   |                              |                     |        |
| <a href="#">Open abstract</a>   | <a href="#">View article</a> | <a href="#">PDF</a> |        |
| <b>OPEN ACCESS</b>  |                              |                     |        |
| <b>Creatinine plasma at uncontrolled type 2 diabetes mellitus and controlled type 2 diabetes mellitus patients at primary health care in Binjai city, Indonesia</b> |                              |                     | 012168 |
| Rusdiana, M Savira, M Syahputra and A Santoso   |                              |                     |        |
| <a href="#">Open abstract</a>   | <a href="#">View article</a> | <a href="#">PDF</a> |        |

|  |                              |                     |  |        |
|--|------------------------------|---------------------|--|--------|
| <b>OPEN ACCESS</b>   |                              |                     |  |        |
| <b>Association of serum uric acid level and blood pressure in type 2 diabetes mellitus</b>                                   |                              |                     |  |        |
| M Savira, Rusdiana and M Syahputra   |                              |                     |  |        |
| <a href="#">Open abstract</a>  | <a href="#">View article</a> | <a href="#">PDF</a> |  | 012169 |
| <b>OPEN ACCESS</b>   |                              |                     |  |        |
| <b>Relationship between depression and glycemic control among patients with type 2 diabetes in Medan</b>                     |                              |                     |  |        |
| R Amelia and Y Yunanda   |                              |                     |  |        |
| <a href="#">Open abstract</a>  | <a href="#">View article</a> | <a href="#">PDF</a> |  | 012170 |
| <b>OPEN ACCESS</b>   |                              |                     |  |        |
| <b>Quality of life and glycemic profile of type 2 diabetes mellitus patients of Indonesian: a descriptive study</b>          |                              |                     |  |        |
| R Amelia, A Lelo, D Lindarto and E Mutiara   |                              |                     |  |        |
| <a href="#">Open abstract</a>  | <a href="#">View article</a> | <a href="#">PDF</a> |  | 012171 |
| <b>OPEN ACCESS</b>   |                              |                     |  |        |
| <b>Pericardiocentesis in massive pericardial effusions due to hypothyroidism</b>   |                              |                     |  |        |
| F H Nainggolan, N N Dalimunthe, S Harahap, R Isnanta, T Realsyah, Z Safri and R Hasan  |                              |                     |  |        |
| <a href="#">Open abstract</a>  | <a href="#">View article</a> | <a href="#">PDF</a> |  | 012172 |
| <b>OPEN ACCESS</b>   |                              |                     |  |        |
| <b>Fulminant type 1 diabetes mellitus: a case report</b>   |                              |                     |  |        |
| E Yunir and Nenfiati   |                              |                     |  |        |
| <a href="#">Open abstract</a>  | <a href="#">View article</a> | <a href="#">PDF</a> |  | 012173 |
| <b>OPEN ACCESS</b>   |                              |                     |  |        |
| <b>Endocrinopathies in thalassemia major patient</b>   |                              |                     |  |        |
| D A Lubis and E M Yunir  |                              |                     |  |        |
| <a href="#">Open abstract</a>  | <a href="#">View article</a> | <a href="#">PDF</a> |  | 012174 |
| <b>Geriatric Medicine</b>  |                              |                     |  |        |
| <b>OPEN ACCESS</b>   |                              |                     |  |        |
| <b>Health status of elderly based on daily activities living, cholesterol and uric acid profile in Medan city</b>            |                              |                     |  |        |
| R Amelia, J Harahap, A S Wahyuni and A Pratama   |                              |                     |  |        |
| <a href="#">Open abstract</a>  | <a href="#">View article</a> | <a href="#">PDF</a> |  | 012175 |
| <b>OPEN ACCESS</b>   |                              |                     |  |        |
| <b>Frailty profile for geriatric patients in outpatient clinic of RSUP H. Adam Malik Medan</b>                               |                              |                     |  |        |
| T D Permatasari, B Sihombing and P Arianto   |                              |                     |  |        |
| <a href="#">Open abstract</a>  | <a href="#">View article</a> | <a href="#">PDF</a> |  | 012176 |
| <b>OPEN ACCESS</b>   |                              |                     |  |        |
| <b>Correlation between hypertension and cognitive function in elderly</b>  |                              |                     |  |        |
| F I Fitri and A S Rambe  |                              |                     |  |        |
| <a href="#">Open abstract</a>  | <a href="#">View article</a> | <a href="#">PDF</a> |  | 012177 |
| <b>Psychosomatic Medicine and Psychiatry</b>   |                              |                     |  |        |
| <b>OPEN ACCESS</b>   |                              |                     |  |        |
| <b>Depressive syndromes among female caregivers of schizophrenic patients in prof. dr. m. ildrem mental hospital medan</b>   |                              |                     |  |        |
| A Handi, M S Husada and D P Gultom   |                              |                     |  |        |
| <a href="#">Open abstract</a>  | <a href="#">View article</a> | <a href="#">PDF</a> |  | 012178 |
| <b>OPEN ACCESS</b>   |                              |                     |  |        |
| <b>Correlation among personal, social performance and cognitive impairment in male schizophrenic patient</b>                 |                              |                     |  |        |
| R Damanik, E Effendy and V Camellia  |                              |                     |  |        |
| <a href="#">Open abstract</a>  | <a href="#">View article</a> | <a href="#">PDF</a> |  | 012179 |
| <b>OPEN ACCESS</b>   |                              |                     |  |        |
| <b>Vitamin D and plain type: a study of male patients with schizophrenia</b>   |                              |                     |  |        |
| N L Akbar, E Effendy and MM Amin   |                              |                     |  |        |
| <a href="#">Open abstract</a>  | <a href="#">View article</a> | <a href="#">PDF</a> |  | 012180 |
| <b>OPEN ACCESS</b>   |                              |                     |  |        |
| <b>BDNF (brain-derived neurotrophic factor) serum levels in schizophrenic patients with cognitive deficits</b>               |                              |                     |  |        |
| N Utami, E Effendy and M M Amin  |                              |                     |  |        |
| <a href="#">Open abstract</a>  | <a href="#">View article</a> | <a href="#">PDF</a> |  | 012181 |
| <b>OPEN ACCESS</b>   |                              |                     |  |        |
| <b>The level of depression in lower back pain patient at outpatient of neurology Haji Adam Malik hospital Medan (RS HAM)</b> |                              |                     |  |        |
| M C Pardosi, B Loebis' and M S Husada  |                              |                     |  |        |
| <a href="#">Open abstract</a>  | <a href="#">View article</a> | <a href="#">PDF</a> |  | 012182 |
| <b>OPEN ACCESS</b>   |                              |                     |  |        |
| <b>The correlation of pain intensity and quality of life in chronic LBP patients in Adam Malik general hospital</b>          |                              |                     |  |        |
| I K Nasution, N D A Lubis, S Amelia and K Hocin  |                              |                     |  |        |
| <a href="#">Open abstract</a>  | <a href="#">View article</a> | <a href="#">PDF</a> |  | 012183 |
| <b>OPEN ACCESS</b>   |                              |                     |  |        |
| <b>The relationship between intelligence and cognitive function in schizophrenic</b>   |                              |                     |  |        |
| Catherine, M M Amin and E Effendy  |                              |                     |  |        |
| <a href="#">Open abstract</a>  | <a href="#">View article</a> | <a href="#">PDF</a> |  | 012184 |
| <b>OPEN ACCESS</b>   |                              |                     |  |        |
| <b>Comparison of folic acid levels in schizophrenic patients and control groups</b>  |                              |                     |  |        |
| C C Arthy, M M Amin and E Effendy  |                              |                     |  |        |
| <a href="#">Open abstract</a>  | <a href="#">View article</a> | <a href="#">PDF</a> |  | 012185 |
| <b>OPEN ACCESS</b>   |                              |                     |  |        |
|  |                              |                     |  | 012186 |

## Mental health problem in HIV/AIDS patients

V Camellia

[Open abstract](#) [View article](#) [PDF](#)

**OPEN ACCESS**  
[Exploring the link between inflammation and mental disorders](#) 012187

E Effendy

[Open abstract](#) [View article](#) [PDF](#)

## Rheumatology

**OPEN ACCESS**  
[Effect of Sidaguri \(\*Sidarhombifolia L\*\) on C-reactive protein \(CRP\) and erythrocyte sedimentation rate \(ESR\) in osteoarthritis patients](#) 012188

B Marpaung and J Siregar

[Open abstract](#) [View article](#) [PDF](#)

## Obstetrics and Gynaecology

**OPEN ACCESS**  
[Expression of natural killer cell activity with CD107a on ectopic endometrium in woman with endometriosis compared with non-endometriosis](#) 012189

H P Lubis, D Aldiansyah, H S Siregar, R Rivany and T S Hariadi

[Open abstract](#) [View article](#) [PDF](#)

**OPEN ACCESS**  
[Difference of protein 53 expression based on radiation therapy response in cervical cancer](#) 012190

H P Pasaribu, L I Lubis, S Dina, R Y Simanjuntak, H S Siregar and R Rivany

[Open abstract](#) [View article](#) [PDF](#)

**OPEN ACCESS**  
[Placental perfusion in 3<sup>rd</sup> trimester pregnancy](#) 012191

M Sitepu, A Syahriza, D Sibuea and T M Hanafiah

[Open abstract](#) [View article](#) [PDF](#)

**OPEN ACCESS**  
[Risk factor for preterm labor in Haji Adam Malik General Hospital, Pirngadi General hospital and satellite hospitals in Medan from January 2014 to December 2016](#) 012192

K Sukatendel, C L Hasibuan, H P Pasaribu, H Sihite, E Ardyansah and M F Situmorang

[Open abstract](#) [View article](#) [PDF](#)

**OPEN ACCESS**  
[Effects of red ginger capsule supplementin reducing PGF2 \$\alpha\$  concentrations and pain intensity in primary dysmenorrhea](#) 012193

M Simarmata, B Halim and D Ardinata

[Open abstract](#) [View article](#) [PDF](#)

**OPEN ACCESS**  
[Knowledge of cervical cancer, attitude and husband's support of Pap smear among multiparous women which have Pap's smear examination in Aviati clinic Padang Bulan Medan](#) 012194

L Feriyawati, D R Anggraini, A A Fitri and R N Anggreini

[Open abstract](#) [View article](#) [PDF](#)

**OPEN ACCESS**  
[The prevalence of anemia in pregnant women and its associated risk factors in North Sumatera, Indonesia](#) 012195

S Lestari, I I Fujiati, D Keumalasari, M Daulay, S J Martina and S Syarifah

[Open abstract](#) [View article](#) [PDF](#)

**OPEN ACCESS**  
[Pap smear cytology and identification of \*Human Papillomavirus\* \(HPV\) type 16 and 18 in multiparity women at Aviati Clinic Padang Bulan Medan](#) 012196

D R Anggraini, L Feriyawati, A A Fitri and R N A Ginting

[Open abstract](#) [View article](#) [PDF](#)

**OPEN ACCESS**  
[Differences of serum interleukin-6 levels in normotensive and preeclampsia women](#) 012197

S N Lumbanraja, R Junitasari and H P Pasaribu

[Open abstract](#) [View article](#) [PDF](#)

## Miscellaneous

**OPEN ACCESS**  
[Neurological complication in HIV patients](#) 012198

K Ritarwan

[Open abstract](#) [View article](#) [PDF](#)

**OPEN ACCESS**  
[Non operative management of cerebral abscess](#) 012199

C A Batubara

[Open abstract](#) [View article](#) [PDF](#)

**OPEN ACCESS**  
[Association of tooth brushing behavior with oral hygiene index among students using fixed appliance](#) 012200

N Ria and P Eyanoe

[Open abstract](#) [View article](#) [PDF](#)

**OPEN ACCESS**  
[Effect of administering black cumin \(\*Nigella sativa\*\) toward postpartum mice \(\*MusMusculus L.\*\)](#) 012201

F Imelda and N A Darti

[Open abstract](#) [View article](#) [PDF](#)

**OPEN ACCESS**  
[Portal hypertensive gastropathy: association with Child-Pugh score in liver cirrhosis](#) 012202

T Sungkar, L H Zain and G A Siregar

|   |                              |                     |        |
|---|------------------------------|---------------------|--------|
| <a href="#">Open abstract</a>   | <a href="#">View article</a> | <a href="#">PDF</a> |        |
| <b>OPEN ACCESS</b>  |                              |                     |        |
| <b>Comparison of changes in mean flow velocity in anterior cerebral artery before and during cognitive stimulation between non-stroke and post-stroke people</b>        |                              |                     | 012203 |
| F I Fitri, I Erwin, C A Batubara, A S Rambe and Y Anwar   |                              |                     |        |
| <a href="#">Open abstract</a>   | <a href="#">View article</a> | <a href="#">PDF</a> |        |
| <b>OPEN ACCESS</b>  |                              |                     |        |
| <b>The relationship between pneumonia and Glasgow coma scale assessment on acute stroke patients</b>  |                              |                     | 012204 |
| K Ritarwan, C A Batubara and R Dhanu  |                              |                     |        |
| <a href="#">Open abstract</a>   | <a href="#">View article</a> | <a href="#">PDF</a> |        |
| <b>OPEN ACCESS</b>  |                              |                     |        |
| <b>Effectiveness differences of ranitidine and omeprazole in prevention of stress ulcer and its effect on pneumonia occurrence and outcome of acute stroke patients</b> |                              |                     | 012205 |
| C A Batubara, K Ritarwan and A S Rambe  |                              |                     |        |
| <a href="#">Open abstract</a>   | <a href="#">View article</a> | <a href="#">PDF</a> |        |
| <b>OPEN ACCESS</b>  |                              |                     |        |
| <b>Determinants of Glasgow outcome scale in patients with severe traumatic brain injury for better quality of life</b>  |                              |                     | 012206 |
| R Dharmajaya, D K Sari and R A Ganie  |                              |                     |        |
| <a href="#">Open abstract</a>   | <a href="#">View article</a> | <a href="#">PDF</a> |        |
| <b>OPEN ACCESS</b>  |                              |                     |        |
| <b>Serum concentration of ubiquitin c-terminal hydrolase-L1 in detecting severity of traumatic brain injury</b>   |                              |                     | 012207 |
| A M P Siahaan, I Japardi and A A Hakim  |                              |                     |        |
| <a href="#">Open abstract</a>   | <a href="#">View article</a> | <a href="#">PDF</a> |        |
| <b>OPEN ACCESS</b>  |                              |                     |        |
| <b>The role of marshall and rotterdam score in predicting 30-day outcome of traumatic brain injury</b>  |                              |                     | 012208 |
| A M P Siahaan, T Y M Akbar and M D Nasution   |                              |                     |        |
| <a href="#">Open abstract</a>   | <a href="#">View article</a> | <a href="#">PDF</a> |        |
| <b>OPEN ACCESS</b>  |                              |                     |        |
| <b>A case report of achalasia</b>   |                              |                     | 012209 |
| F Sarumpaet and L Dairi   |                              |                     |        |
| <a href="#">Open abstract</a>   | <a href="#">View article</a> | <a href="#">PDF</a> |        |
| <b>OPEN ACCESS</b>  |                              |                     |        |
| <b>Moderate acute pancreatitis with pleural effusion and impaired kidney functions</b>  |                              |                     | 012210 |
| O H Lumbantoruan and L B Dairi  |                              |                     |        |
| <a href="#">Open abstract</a>   | <a href="#">View article</a> | <a href="#">PDF</a> |        |
| <b>OPEN ACCESS</b>  |                              |                     |        |
| <b>Polycystic liver disease with right pleural effusion</b>   |                              |                     | 012211 |
| A Y Anggreini and L B Dairi   |                              |                     |        |
| <a href="#">Open abstract</a>   | <a href="#">View article</a> | <a href="#">PDF</a> |        |
| <b>OPEN ACCESS</b>  |                              |                     |        |
| <b>Acute disseminated encephalomyelitis: a case report of effective early immunotherapy</b>   |                              |                     | 012212 |
| K Ritarwan, O R Ramayani and P Eyanocer   |                              |                     |        |
| <a href="#">Open abstract</a>   | <a href="#">View article</a> | <a href="#">PDF</a> |        |
| <b>OPEN ACCESS</b>  |                              |                     |        |
| <b>Degree of neutrophil, atrophy, and metaplasia intestinal were associate with malondialdehyde level in gastritis patients</b>   |                              |                     | 012213 |
| G A Siregar, D K Sari and T Sungkar   |                              |                     |        |
| <a href="#">Open abstract</a>   | <a href="#">View article</a> | <a href="#">PDF</a> |        |
| <b>OPEN ACCESS</b>  |                              |                     |        |
| <b>Renal dysfunction in liver cirrhosis and its correlation with Child-Pugh score and MELD score</b>  |                              |                     | 012214 |
| G A Siregar and M Gurning   |                              |                     |        |
| <a href="#">Open abstract</a>   | <a href="#">View article</a> | <a href="#">PDF</a> |        |
| <b>OPEN ACCESS</b>  |                              |                     |        |
| <b>Diagnostic accuracy of liver fibrosis based on red cell distribution width (RDW) to platelet ratio with fibroscan in chronic hepatitis B</b>                         |                              |                     | 012215 |
| J Sembiring and F Jones   |                              |                     |        |
| <a href="#">Open abstract</a>   | <a href="#">View article</a> | <a href="#">PDF</a> |        |
| <b>OPEN ACCESS</b>  |                              |                     |        |
| <b>Comparison of lipid profile between degrees of severity of hepatic cirrhosis in Haji Adam Malik general hospital Medan</b>   |                              |                     | 012216 |
| G A Siregar and S E Tampubolon  |                              |                     |        |
| <a href="#">Open abstract</a>   | <a href="#">View article</a> | <a href="#">PDF</a> |        |
| <b>OPEN ACCESS</b>  |                              |                     |        |
| <b>Serum iron parameters in liver cirrhosis</b>   |                              |                     | 012217 |
| G A Siregar and W Maail   |                              |                     |        |
| <a href="#">Open abstract</a>   | <a href="#">View article</a> | <a href="#">PDF</a> |        |
| <b>OPEN ACCESS</b>  |                              |                     |        |
| <b>Miliariapustulosa in post craniotomy patient</b>   |                              |                     | 012218 |
| D A Dalimunte, I B Putra and N K Jusuf  |                              |                     |        |
| <a href="#">Open abstract</a>   | <a href="#">View article</a> | <a href="#">PDF</a> |        |
| <b>OPEN ACCESS</b>  |                              |                     |        |
| <b>The prevalence and risk factors of stunting among primary school children in North Sumatera, Indonesia</b>   |                              |                     | 012219 |
| S Lestari, I I Fujiati, D Keumalasari and M Daulay  |                              |                     |        |
| <a href="#">Open abstract</a>   | <a href="#">View article</a> | <a href="#">PDF</a> |        |
| <b>OPEN ACCESS</b>  |                              |                     |        |
| <b>AgNOR histochemical expression in benign prostatic hyperplasia and prostatic adenocarcinoma</b>  |                              |                     | 012220 |

R Rita, Delyuzar and L I Laksmi

[Open abstract](#) [View article](#) [PDF](#)

---

**OPEN ACCESS**  
**Optimization and validation of high-performance liquid chromatography method for analyzing 25-desacetyl rifampicin in human urine** 012221

Lily, L Laila and B E Prasetyo

[Open abstract](#) [View article](#) [PDF](#)

---

**OPEN ACCESS**  
**Acute hypersensitivity to mannitol: a case report** 012222

A M Siahaan and A Fithrie

[Open abstract](#) [View article](#) [PDF](#)

---

**OPEN ACCESS**  
**Scrotal migration of ventriculoperitoneal shunt: a case report at Haji Adam Malik hospital, Medan** 012223

R Dharmajaya

[Open abstract](#) [View article](#) [PDF](#)

---

**OPEN ACCESS**  
**Hepatobiliary ultrasonography** 012224

J Sembiring

[Open abstract](#) [View article](#) [PDF](#)

---

**OPEN ACCESS**  
**Serum level of IL-6 in liver cirrhosis patients** 012225

I Rey, R Effendi-YS, L B Dairi, G A Siregar and L H Zain

[Open abstract](#) [View article](#) [PDF](#)

---

**OPEN ACCESS**  
**Correlation of nutritional status with academic achievement in adolescents** 012226

R S Sinurat, T Sembiring, E Azlin, T Faranita and W Pratita

[Open abstract](#) [View article](#) [PDF](#)

---

**OPEN ACCESS**  
**Association between serum concentration of 25-hydroxyvitamin D [25(OH)D] and chronic periodontitis** 012227

A Primasari and K P Sihombing

[Open abstract](#) [View article](#) [PDF](#)

---

**OPEN ACCESS**  
**Comparison between the angle of Eustachian tube in patients with chronic suppurative otitis media and normal ears based on computed tomography scan of temporal bones in Haji Adam Malik general hospital Medan** 012228

S Masita, D Zahara and A Aboet

[Open abstract](#) [View article](#) [PDF](#)

PAPER • OPEN ACCESS

## An expanded dengue syndrome patient with manifestation myocarditis: case report

To cite this article: M V Arifijanto *et al* 2018 *IOP Conf. Ser.: Earth Environ. Sci.* **125** 012094

View the [article online](#) for updates and enhancements.

# An expanded dengue syndrome patient with manifestation myocarditis: case report

M V Arifijanto<sup>1\*</sup>, H P Luqmana<sup>2</sup>, M Rusli<sup>1</sup> and Bramantono<sup>1</sup>

<sup>1</sup>Tropical Medicine and Infectious Disease Division, Department of Internal Medicine Faculty of Medicine, University of Airlangga-RSUD Dr. Soetomo, Surabaya, Indonesia

<sup>2</sup>Department of Internal Medicine Faculty of Medicine, University of Airlangga-RSUD Dr. Soetomo, Surabaya, Indonesia

\*Corresponding author: divtropin@yahoo.com

**Abstract.** Dengue infection may manifest asymptomatic, dengue fever, dengue hemorrhagic fever, dengue shock syndrome. However, atypical manifestations in other organs have been increasingly reported and called expanded dengue syndrome. One of the cardiac complications in dengue is myocarditis. An 18-year-old woman complains of high fever since 3 days, epistaxis, chest pain, dyspnea, and vomiting. Laboratory examination obtained thrombocytopenia, hemoconcentration, NS1, IgG-IgM dengue positive, CKMB and Troponin-I increase. Electrocardiogram result ischemic anterior-posterior. Echocardiography results hyperechogenic on myocardial suspicious a myocarditis. The patient was diagnosed with acute myocarditis and dengue hemorrhagic fever. Condition improved after five days of treatment. Cardiac complications in dengue are now increasingly observed with the most common case is myocarditis. The main mechanism of dengue myocarditis is still unknown though both direct viral infection and immune mediated damage have been suggested to be the cause of myocardial damage. The low incidence of dengue myocarditis is because it's asymptomatic and diagnosis is easily missed. Almost all cases of dengue myocarditis are self-limiting and severe myocarditis leading to dilated cardiomyopathy is extremely rare. There have been reported a patient with dengue hemorrhagic fever with manifestation myocarditis. Condition improve with supportive management.

## 1. Introduction

Dengue Hemorrhagic Fever (DHF) is a disease with the main symptoms of fever, muscle and joint pain that usually worsens after the third day. This disease manifests bleeding, causing shock and can cause death.[1] During January 2015 in East Java Province, the outbreak occurred in 37 districts / cities, with a total of 3,136 cases and 52 deaths(*Case Fatality Rate* = 1.65%).[2]

World Health Organization (WHO) classification of symptomatic dengue infection, continuously evolved, first in 1997 it divided into dengue fever (DF), dengue hemorrhagic fever (DHF) and dengue shock syndrome (DSS). In 2009 it improved into dengue with or without warning signs and severe dengue.[3] However, in 2011, WHO Regional Office for South East Asia (SEARO) revised and further improving the classification, divided into DF, DHF without shock or with shock (DSS) and expanded dengue syndrome.[4]





Expanded dengue syndrome is a new entity added to the classification system to incorporate a wide spectrum of unusual manifestations of dengue infection affecting various organ systems that had been reported including gastrointestinal, hepatic, neurological, cardiac, pulmonary and renal systems.[4]

Cardiac complications in patients with dengue illness are not uncommon and might have been under-diagnosed because most of the cases are clinically mild and self-limited. The most common complication is myocarditis. However, the study of myocarditis in dengue is still very lacking. The pathogenesis of myocarditis in dengue is still not clear. Clinical manifestation of myocarditis dengue is varied. Endomyocardial biopsy (EMB) is a deterministic diagnostic method but difficult to popularize. According to the ESC (European Society of Cardiologist) New Criteria, the combination of symptoms, electrocardiography, cardiac enzyme marker and cardiac imaging can use to diagnose the dengue hemorrhagic fever patient with myocarditis. The fatal complication of myocarditis dengue are arrhythmias, heart failure, cardiogenic shock until death.[5]

Here we will discuss a case of a female sufferer experiencing myocarditis triggered by a dengue virus infection. This case was raised because it is a rare case in the community, with a high mortality rate.

## 2. Findings

Ms. E, female, 18 year's old, unmarried, lives in Surabaya, came to emergency department. Soetomo Teaching Hospital on August 12, 2017, with a chief complaint of fever.

From anamnesis, fever complaint since 3 days prior to admission. High fever is accompanied by complaints of a headache and joint pain. Patients also complain of heartburn, nausea, and vomiting. Vomiting occurs every meal, 2-3x/day with an amount of approximately ½ glass of aqua every time vomiting, containing food, no blood. No complaints a cough, congested. There are spontaneous bleeding complaints in the form of nosebleeds 1-day prior admission to hospital, no complaints of gum bleeding or reddish spots on the skin. Patients also complained of dyspnea, palpitation and left chest pain, such as heavy objects struck and spread to the back left rear and worsen 1 hours prior to admission.

From the previous history of disease did not get the history of dengue fever, diabetes mellitus, hypertension and heart disease. Patients do not smoke and do not consume alcohol. From the family illness history also did not get the same disease with the patient.

From physical examination, the general condition appears weak, sufficient nutritional status (body weight 55 kg, height 165 cm, BMI 20,20 kg/m<sup>2</sup>), conscious alert, GCS 456. Blood pressure 100/60 mmHg, pulse 100 x/minute, regular, strong pulsation, breathing 24x/minute, axillary temperature 39.0°C. On examination of the head and neck, there is no anemia in the conjunctiva, jaundice or cyanosis. No enlargement of lymph nodes nor increased jugular venous pressure. On the heart examination S1, S2 normal, no murmur and gallop. Pulmonary examination obtained vesicular breath sounds in all lung fields, neither ronchi nor wheezing. On abdominal examination, no distended, normal bowel sounds, liver and lien are not palpable. On examination of the extremity was not obtained yellow skin, edema, and purpura on the skin and obtained positive *Rumple Leede* examination results.

From laboratory examination when the patient was admitted to hospital (12<sup>th</sup> of August 2017), Hb 12.0 g/dL, leukocyte 4500/μL, platelet 84,000/μL, HCT 34.6%, SGOT 78U/L, SGPT 59U/L, GDA 104mg/dL, Alb 4.8g/dL, BUN 11.0mg/dL, creatinine serum 0.75mg/L, sodium 142mmol/L, potassium 3.6mmol/L, chloride 107mmol/L, HbsAg (non-reactive), CKMB 87U/L (normal 7.0-25.0U/L) and Troponin I 0.14ng/mL (normal <0.02 ng/mL). The results of the NS-1 examination showed positive results. From the radiological examination of thorax photographs, no abnormalities were found. From the ECG results is the sinus rhythm 96x/minute with normal axis and ischemic anterior-inferior (ST depressed in V1-V4 and II, III, avF).

From the anamnesis, physical examination, laboratory examination and radiological examination, the patient was diagnosed with Dengue Hemorrhagic Fever grade II (3<sup>rd</sup> day) + Chest Pain Observation. Patients are given high-calorie high-protein diet therapy 2100 kcal/day, infusion of

Ringer Acetate 2000cc/day, injection Omeprazole 40 mg/12 hours, Paracetamol tablet 3 x 500mg. Patients planned Compleat Blood Count serial inspection every morning,

**The 2<sup>nd</sup> day of admission**, the patient complains of persistent nausea, but the vomiting begins to decrease, the fever begins to decrease, chest pain is reduced. General condition was appeared weak, GCS 456, blood pressure 100/70mmHg, pulse 94x/min, regular, strong pulsation, breathing 18x/minute, more axile temperature 38.4°C. The result of a laboratory test is Hb 13.2g/dL, leukocyte 4,100/μL, platelet 76,000/μL, HCT 39.6%, Patient diagnosed with Dengue Hemorrhagic II (4<sup>th</sup> day) + Chest Pain Observation. Previous therapy given to the patient is continued. Patients are planned for IgG, and IgM Dengue, Compleat Blood Countserial and are scheduled for an Echo-cardiography examination the next day.

**The 3<sup>rd</sup> day of admission**, clinical sufferers begin to improve, reduced fever complaints, nausea reduced, no vomiting, reduced chest pain. General condition was appeared weak, GCS 456, blood pressure 110/70 mmHg, pulse 94 x/minute, regular, strong pulsation, breathing 16x/minute, more axile temperature 37.6°C. Results of laboratory examination were obtained Hb 13.7g/dL, leukocyte 3800/μL, platelet 56,000/μL, HCT 41.6%, IgG dengue positive, IgM dengue positive. Examination Echocardiography obtained normal results echo with a hyperechogenic picture on microcard suspicious a myocarditis with normal Ejection Fraction 74%. Patients were diagnosed with Dengue Hemorrhagic grade II (5<sup>th</sup> day) + Myocarditis Dengue. Patients planned Compleat Blood Count serial examination. Previous therapy given to the patient is continued.

**The 4<sup>th</sup> day of admission**, the patient's condition improved, no complaints of fever, nausea, vomiting, and chest pain. General condition was appeared weak, GCS 456, blood pressure 110/70mmHg, 88x/minute, regular, strong pulsation, breathing 16x/minute, 37.2°C more axile temperature. The results of laboratory examination obtained result Hb 12.8g/dL, leukocyte 4800/μL, platelet 84,000/μL, HCT 38.4%. Patients diagnosed with dengue hemorrhagic grade II (6<sup>th</sup> day) + Dengue myocarditis improved. Patients planned Complete Blood Count serial inspection, Serum Electrolytes, SGOT, SGPT, BUN, SC, Alb. Patients given Ringer Answering therapy 1500cc/day, previous therapy continued.

**The 5<sup>th</sup> day of admission**, the patient has no complaints. General condition was appeared enough good, GCS 456, blood pressure 110/70mmHg, pulse 80x/minute, regular, strong pulsation, breathing 16x/minute, more axile temperature 36.8°C. The result of laboratory examination was obtained by Hb 12.3g/dL, 5200/μL leukocyte, 124,000/μL platelet, 36.9% HCT, SGOT 58U/L, SGPT 41U/L, albumin 3.7g/dL, sodium 131mmol/L, potassium 4.6mmol/L, chloride 100mmol/L, BUN 9.0mg/dL, creatinine serum 0.6mg/L. From the Electrocardiography, sinus rhythm 90x/m with the normal axis. Patients were diagnosed with Dengue Hemorrhagic grade II (7<sup>th</sup> day) + Dengue myocarditis improved. Patients discharged and given medicine home that is Paracetamol tablet 3 x 500mg. Patients were asked to return control to the policlinic 3 days after leaving the hospital.

### 3. Discussion

Dengue virus infection is a disease that found in children and adults with the main symptoms of fever, muscle and joint pain that usually worsens after the first three days. This disease is an acute febrile illness accompanied by bleeding manifestations with potential shocking and can lead to death in children <15 years, but not likely to attack adults.[1] Signs of this disease are sudden high fever 2 to 7 days with no obvious cause, weakness, lethargy, anxiety, heartburn, accompanied by signs of bleeding in the skin (petechiae), bruising (ecchymosis) or rash (purpura). Sometimes there are other spontaneous bleeding manifestations such as nosebleeds, bleeding gums to dysentery. Severe symptoms can lead to decreased awareness or shock.[2]

Laboratory results in dengue fever are found in thrombocytopenia (<100,000/μL), While the increase of hematocrit >20% of the baseline on dengue hemorrhagic fever is a sign of plasma. Serological tests results in dengue are influenced by the type of dengue infection, whether it is the primary/first, or secondary/reinfection. IgM antibodies are detectable by days 3–5 after the onset of illness, rise quickly in two weeks and decline to undetectable levels after 2–3 months, because this late

appearance, the first five days of clinical illness are usually negative of IgM. In dengue secondary infection, the rise of IgM are not as high as primary infection, and sometimes absent / undetectable completely.[6]

IgG antibodies in primary infection, evolves relatively slow, with low titres 8-10 days after fever onset, increase subsequently and remain for many years, whereas in secondary infection it evolves rapidly, with high titres soon after fever onset and persist to a lifelong period. Hence, a ratio of IgM/IgG is commonly used to differentiate between primary and secondary dengue infections. Ratio of IgM/IgG titre less than 1.2 is considered a secondary dengue infection. But to be noted, titre ratio only could be validly use as a data if the IgG/IgM serological test is using pure quantitative means, not by qualitative or semi-quantitative.[7]

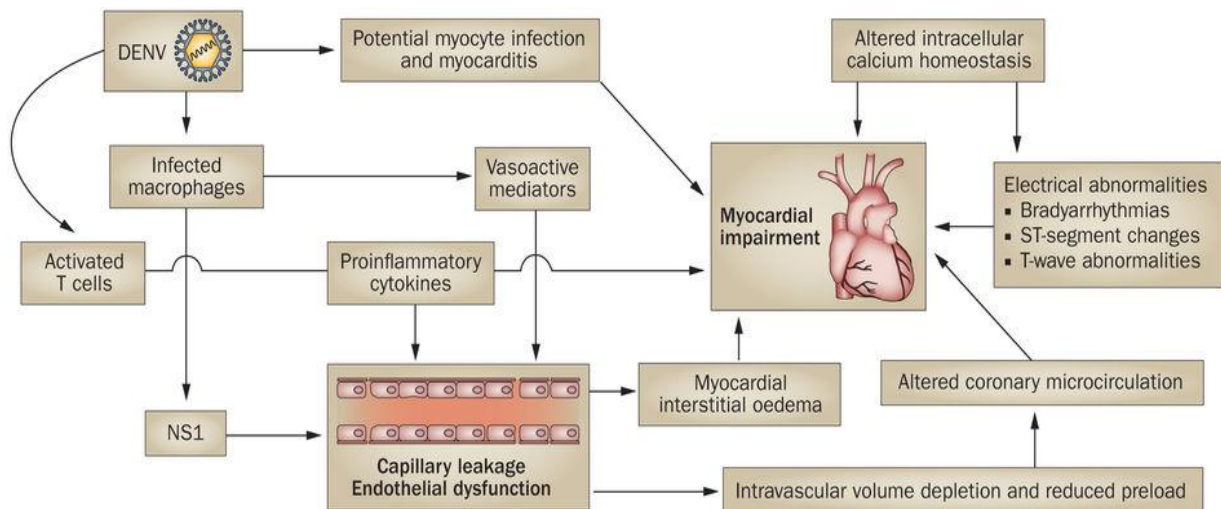
NS1 antigen detection is widely used and cost-effective, NS1 could be detected from day 1-8 of fever onset, unaffected by a primary or secondary dengue infection. In conclusion, by combining the serological (IgG and IgM) and NS1 tests, clinicians could rapidly assess the dengue diagnosis with its types (primary or secondary infection) and applies the best treatment.[8]

In 2011, based on many reports of cases with dengue-related unusual manifestations and organ complications, WHO-SEARO further improved and revised 2009 WHO guidelines by adding a new entity, that is expanded dengue syndrome (unusual/atypical manifestation of dengue), these include neurological, hepatic, renal, cardiac and other isolated organ involvement, that could be explained as complications of severe, profound shock or associated with underlying host conditions/diseases or coinfections.[4]

Myocarditis is an uncommon complication of dengue infection. Data about prevalence and characterization of myocarditis in dengue still lacking. In China from August to October 2014, from 1782 diagnosed dengue patients, there are about 201 cases patient were diagnosed with myocarditis and the prevalence of myocarditis in hospitalized dengue was 11.28%. Clinical presentation in myocarditis is varied. The sign and symptoms are chest pain, dyspnea at rest or exercise, palpitation, syncope, cardiac shock and sudden cardiac death.[5]

According to the diagnostic criteria from European Society of Cardiology 2013, dengue patients were subjected to electrocardiogram (ECG), echocardiography and cardiac enzyme test (CET) to make the diagnosis of myocarditis. Myocarditis was diagnosed if 1 or more clinical presentation and 1 or more auxiliary diagnosis method; 2 or more auxiliary diagnosis method should be met if the patient is asymptomatic. 12 leads ECG was considered abnormal with any of following, such as sinus arrest, AV-block, bundle branch block, atrial fibrillation, ST wave change (ST elevation, ST depression, T inversion), abnormal Q waves. Based on echocardiography usually found functional and structural abnormalities such as ventricular dilatation, increased wall thickness, diastolic function abnormality, pericardial effusion, left ventricular ejection fraction less than 55%, valvular regurgitation or vegetation. The cardiac enzyme was considered to be elevated and abnormal if CK-MB more than 25U/L and/or cTnI more than 0.02ng/m and/or NT-proBNP more than 450ng/L (age <50 years), 900ng/L (age 50–75 years), and 1800ng/L (age >75 years). The gold standard to diagnose myocarditis is EMB (Endomyocardial Biopsy), but it is not performed regularly.[5]

The pathogenesis myocarditis in dengue patient is still unclear. The mechanism of myocardial damage in dengue could be the release of inflammatory mediators and the direct action of the virus on cardiomyocytes, as seen in acute myocarditis caused by other viruses. Using immunofluorescence confocal microscopy in heart tissue, reported that myotubes were infected by dengue virus in one child with fatal DHF, although the myocardium sections appeared morphologically normal, with minimal cellular infiltrates. Moreover, clinical characterization of myocarditis, in this case, was not complete.[9]



**Figure 1.** Pathogenesis myocarditis in dengue infection virus [10].

The gold standard of myocarditis in dengue patient is Endomyocardial Biopsy, the fulminant course of clinical dengue myocarditis was associated with intense interstitial edema, several multifocal areas of necrosis, and diffuse inflammatory infiltration. Interestingly, the myocytolytic necrotic areas were replete with virus particles; therefore providing detailed histological evidence of a possible dengue direct action in cardiomyocytes. Further clinical and experimental studies are necessary to better understand the molecular mechanism of dengue virus-induced lesions on the myocardium.[11]

Patients with dengue hemorrhagic fever should be treated according to the existing protocol based on the degree of dengue itself. For DHF grade I-II without any signs of shock the patient was treated with crystalloid maintenance fluid with the formula  $1500 + (20 \times (\text{BB}-20))$  cc/24 hours. While the other therapy is symptomatic therapy.[12]

#### 4. Conclusion

It has been reported a female patient, 18 years old with dengue hemorrhagic fever grade II + myocarditis dengue. A patient comes with fever for 3 days, headache, joint pain, heartburn, nausea, vomiting epistaxis, dyspnea, palpitation, left chest pain like heavy objects and spread to the left back. From the previous history of disease did not get the history of diabetes mellitus, hypertension, and heart disease. From physical examination positive *Rumple Leede* examination results. In laboratory tests, the results of thrombocytopenia, increased HCT >20%, NS-1 positive, IgG and IgM dengue positive, higher titer of CKMB and Troponin-I. From the ECG results obtained the results of sinus rhythm, with ischemic anterior-inferior whereas echocardiography examination obtained with a hyperechogenic picture on my card suspicious of myocarditis with Ejection Fraction 74%. The patient recovers with adequate intravenous fluid rehydration and symptomatic therapy. In the course of admission, patient experienced a better condition The patient finally discharged on the 5<sup>th</sup> day of admission, with general condition improved, platelet count >100,000/mm<sup>3</sup>, and the improvement of cardiac condition based on electrocardiography evaluation.

#### References

- [1] Suhendro, Nainggolan L, Chen K and Pohan H T 2014 Dengue hemorrhagic fever *Medical faculty of University of Indonesia study book 6<sup>th</sup> edition* (Jakarta: Interna Publishing) p 539
- [2] Mediastianto E 2015 *Extraordinary event in East Java and South Sumatra province in 2015* (Jakarta: Health Department of Republic Indonesia) [Accessed: September 29, 2017] Available from [http://www. penanggulangan krisis.depkes.go.id/klb-demam-berdarah-dengue-di-provinsi-jawa-timur--dan-provinsi-sumatera](http://www.penanggulangan.krisis.depkes.go.id/klb-demam-berdarah-dengue-di-provinsi-jawa-timur--dan-provinsi-sumatera)

- [3] World Health Organization 2011 Comprehensive guidelines for prevention and control of dengue and dengue haemorrhagic fever (India: World Health Organization) pp 23-32
- [4] World Health Organization, Regional Office for South-East Asia (WHO-SEARO) 2011 Comprehensive guidelines for prevention and control of dengue and dengue hemorrhagic fever (India: World Health Organization) **20** 18-20
- [5] Li Y, *et al.* 2016 Characterization of the myocarditis during the worst outbreak of dengue infection in China *Med. J.* **95(27)** 4051-6
- [6] Chawla P, Amrita Y and Viney C 2014 Clinical implications and treatment of dengue *Asian Pac J Trop Med.* **7(3)** 169-78
- [7] Guzman M G and Eva H 2015 Dengue infection *Lancet J. Trop. Med.* **385(9966)** 453-65
- [8] Rathakrishnan A and Sekaran S D 2015 New development in the diagnosis of dengue infections *Expert Opin. Med. Diagn.* **7(1)** 124-33
- [9] Miranda C H, *et al.* 2013 A case presentation of fatal dengue myocarditis showing evidence for dengue virus-induced lesion *Eur. Heart J. Acute Cardiovasc. Care* **0(0)** 1-4
- [10] Yacoub S, Wertheim H, Simmons C P, Screaton G and Wills B 2014 Cardiovascular manifestation of the emerging dengue pandemic *Nature Rev. Cardiol.* **11** 335-45
- [11] Lee I K, Lee W H, Liu J W and Yang K D 2010 Acute myocarditis in dengue hemorrhagic fever: a case report and review of cardiac complications in dengue-affected patients *Int. J. Infect. Dis.* **14** 919-22
- [12] Tahir H, Daruwalla V and Hayat S 2017 Myocarditis leading to severe dilated cardiomyopathy in a patient with dengue fever *Hindawi Publishing Corporation* **2015** 1-4