

PAPER • OPEN ACCESS

2nd International Conference on Tropical and Coastal Region Eco Development 2016

To cite this article: 2017 *IOP Conf. Ser.: Earth Environ. Sci.* **55** 011001

View the [article online](#) for updates and enhancements.

You may also like

- [Conference Committee](#)
- [11th Joint Conference on Chemistry in Conjunction with the 4th Regional Biomaterials Scientific Meeting](#)
- [International Conference on Food Science and Engineering 2016](#)



The Electrochemical Society
Advancing solid state & electrochemical science & technology

243rd Meeting with SOFC-XVIII

Boston, MA • May 28 – June 2, 2023

Accelerate scientific discovery!

Learn More & Register



Published in IOP Proceeding Series: 2nd International Conference on Tropical and Coastal Region Eco Development (ICTCRED) 2016

PREFACE

The 2nd International Conference on Tropical and Coastal Region Eco Development (ICTCRED) 2016 was held by Research and Community Services Institute, Diponegoro University, Indonesia in Bali during 25-27 October 2016. Bali, the god island amid pleasant surroundings, was a delightful place for this conference. The 165 research papers were presented both by oral and poster presentation, and the conference had delivered many fruitful discussions and exchanges that contributed to the success of the conference. Among these papers, we selected 72 papers through intensive review by scientific committee. Participants from 10 countries made the conference truly international in scope and the presentations were split into two main conference areas, i.e., tropical life sciences and Coastal Region Developments. There were 7 plenary lectures covering the different areas of the conference: Prof. Ocky Karna Radjasa (Ministry of Research, Technology and Higher Education) talked on Policy on Coastal Research in Indonesia, Prof. Ambariyanto (Diponegoro University) on Update in Coastal Development, Prof. Makoto Tsuchiya (University of the Ryukyus – Japan) on Coral Reef Ecosystem, Prof. Peter Gell (Federation University of Australia – Australia) on Pollution and Coastal Environmental Changes in Tropical Region, Prof. Johan C. Winterwerp (TU Delft, Netherlands) on Restoring eroding mangrove-mud coasts through Building with Nature. These plenary speakers have given significant scientific contributions to the conference.

Participants have delivered their talks of valuable research outputs which are varies from extracting valuable compounds from marine environment and convert them to specialty products. During the presentation, marine products and their processing were also elaborated with developments in oceanography technology, coastal environment management and policies. These topics were more fruitful when researches in social science and its developments especially at the coastal area were also presented. These wide range of topics have colorized this conference.

Finally, it is appropriate that we record our thanks to our fellow members of the Organizing Committee and of the Scientific Committee for their work in maintaining high quality of papers and in encouraging participation from those areas. We are also indebted to those who served as chairman of Institute of Research and Community Services, Diponegoro University and Ministry of Research, Technology and Higher Education for their financial supports. Without their support, the conference could not have been the success that it was. We also acknowledge the authors themselves, without whose expert input there would have been no conference. The continuing success of this conference series means that planning can now proceed with confidence for the same event in 2017.

Guest Editors

Hadiyanto,
Chair of Scientific Committee



Scientific Committee/Editor

Hadiyanto (*Diponegoro University, Indonesia*)
Makoto Tsuchiya (*University of the Ryukyus, Japan*)
Heru Susanto (*Diponegoro University, Indonesia*)
Muhammad Mukhlisin (*Semarang State Polytechnic, Indonesia*)
Jamari (*Diponegoro University, Indonesia*)
Hussein Gasem (*Diponegoro University, Indonesia*)
Ambariyanto (*Diponegoro University, Indonesia*)
Muhammad Zainuri (*Diponegoro University, Indonesia*)
Muhammad Ali (*Mataram University*)
Sultana MH Faraz (*Diponegoro University, Indonesia*)
Gerard Pals (*Vrije Universiteit Amsterdam, Netherland*)
Randi Hagerman (*University of California Davis, United States*)
Flora Tassone (*University of California Davis, United States*)
Herawati Sudoyo (*Eijkman Institute, Indonesia*)
Ocky Karna Rajasa (*MRTHE, Indonesia*)
Craig Starger (*Colorado State University, United States*)
CN Ravishankar (*Central Institute of Fisheries Technology, India*)
Agus Sabdono (*Diponegoro University, Indonesia*)
Maria Barbosa (*Wageningen University, Netherland*)
Yasuhiro Igarashi (*Japan*)
Irwandi Jaswir (*IUM, Malaysia*)
Michio Hidaka (*University of the Ryukyus, Japan*)

Organizing Committee

Munawar A Riyadi	Chair
Tri Indah Winarni	Co-Chair of TLS
Diah Permata Wijayanti	Co-Chair of CRED
Eko Susanto	Secretary
Desrina	Proceeding
Muh. Arfan	Publication

This conference has been conducted by Institute of Research and Community Services, Diponegoro University, Indonesia 25-27 October 2016

PAPER • OPEN ACCESS

Peer review statement

To cite this article: 2017 *IOP Conf. Ser.: Earth Environ. Sci.* **55** 011002

View the [article online](#) for updates and enhancements.

You may also like

- [Peer review declaration](#)

- [Peer review declaration](#)

- [Peer review declaration](#)



The Electrochemical Society
Advancing solid state & electrochemical science & technology

243rd Meeting with SOFC-XVIII

Boston, MA • May 28 – June 2, 2023

Accelerate scientific discovery!

Learn More & Register



Peer review statement

All papers published in this volume of *IOP Conference Series: Earth and Environmental Science* have been peer reviewed through processes administered by the proceedings Editors. Reviews were conducted by expert referees to the professional and scientific standards expected of a proceedings journal published by IOP Publishing.



Table of contents

Volume 55

2017

◀ Previous issue Next issue ▶

2nd International Conference on Tropical and Coastal Region Eco Development 2016 25–27 October 2016, Bali, Indonesia

Accepted papers received: 30 January 2017

Published online: 01 March 2017

Open all abstracts

Preface

OPEN ACCESS 011001

2nd International Conference on Tropical and Coastal Region Eco Development 2016

+ Open abstract  View article  PDF

OPEN ACCESS 011002

Peer review statement

+ Open abstract  View article  PDF

Papers

OPEN ACCESS 012001

Past and Future Ecosystem Change in the Coastal Zone

P Gell

+ Open abstract  View article  PDF

OPEN ACCESS 012002

Conserving endangered marine organisms: causes, trends and challenges

Ambariyanto

+ Open abstract  View article  PDF

OPEN ACCESS 012003

Population of *Aedes sp* in Highland of Wonosobo District and Its Competence as A Dengue Vector

Martini Martini, Bagoes Widjanarko, Retno Hestningsih, Susiana Purwantisari and Sri Yuliawati

+ Open abstract  View article  PDF

OPEN ACCESS 012004

Nutritional value content, biomass production and growth performance of *Daphnia magna* cultured with different animal wastes resulted from probiotic bacteria fermentation

Vivi Endar Herawati, R A Nugroho, Pinandoyo and Johannes Hutabarat

+ Open abstract  View article  PDF

OPEN ACCESS 012005

Symbiotic Fungus of Marine Sponge *Axinella sp.* Producing Antibacterial Agent

A Trianto, S Widyaningsih, OK Radjasa and R Pribadi

+ Open abstract  View article  PDF

OPEN ACCESS 012006

The Influence of Madden Julian Oscillation on the Formation of the Hot Event in the Western Equatorial Pacific

Anindya Wirasatriya, Denny Nugroho Sugianto and Muhammad Helmi

This site uses cookies. By continuing to use this site you agree to our use of cookies. To find out more, see our Privacy and Cookies policy.



OPEN ACCESS 012007

Sediment Transport Model In Sayung District, Demak

Aris Ismanto, Muhammad Zainuri, Sahala Hutabarat, Denny Nugroho Sugianto, Sugeng Widada and Anindya Wirasatriya

[+ Open abstract](#) [View article](#) [PDF](#)

OPEN ACCESS 012008

Resources Management Strategy For Mud Crabs (*Scylla* spp.) In Pemalang Regency

Aristi Dian Purnama Fitri, Herry Boesono, Agus Sabdono and Nadia Adlina

[+ Open abstract](#) [View article](#) [PDF](#)

OPEN ACCESS 012009

Development of Spore Protein of *Myxobolus koi* as an Immunostimulant for Prevent of Myxobolus on Gold Fish (*Cyprinus carpio* Linn) by Oral Immunisation

Gunanti Mahasri

[+ Open abstract](#) [View article](#) [PDF](#)

OPEN ACCESS 012010

The Effectiveness of Extracts Basil Leaves (*Ocimum sanctum* Linn) against *Saprolegnia* sp. by in Vitro

Sudarno, Muhammad Luthfi Hakim and Rahayu Kusdarwati

[+ Open abstract](#) [View article](#) [PDF](#)

OPEN ACCESS 012011

Developing groundwater conservation zone of unconfined aquifer in Semarang, Indonesia

T T Putranto, W K Hidajat and N Susanto

[+ Open abstract](#) [View article](#) [PDF](#)

OPEN ACCESS 012012

Understanding coastal processes to assist with coastal erosion management in Darwin Harbour, Northern Territory, Australia

S.G. Tonyes, R.J. Wasson, N.C. Munksgaard, K.G. Evans, R. Brinkman and D.K. Williams

[+ Open abstract](#) [View article](#) [PDF](#)

OPEN ACCESS 012013

Environmental and Risk Factors of Leptospirosis: A Spatial Analysis in Semarang City

Silviana Nur Fajriyah, Ari Udiyono and Lintang Dian Saraswati

[+ Open abstract](#) [View article](#) [PDF](#)

OPEN ACCESS 012014

Study of inundation events along the southern coast of Java and Bali, Indonesia (case studies 4-9 June 2016)

I R Nugraheni, D P Wijayanti, D N Sugianto and A Ramdhani

[+ Open abstract](#) [View article](#) [PDF](#)

OPEN ACCESS 012015

The Use of Water Exchange for Feeding Rate and Growth Promotion of Shortfin Eel *Anguilla bicolor bicolor* In Recirculating Water System

N Taufiq-Spj, S Sunaryo, A Wirasatriya and D N Sugianto

[+ Open abstract](#) [View article](#) [PDF](#)

OPEN ACCESS 012016

ASSOCIATION BETWEEN MACROMINERALS INTAKE AND CHANGES IN INTERNAL CAROTID ARTERY-INTIMA MEDIA THICKNESS IN POST ISCHEMIC STROKE PATIENTS

Dwi Pudjonarko, Dodik Tugasworo and Rumintang Silaen

[+ Open abstract](#) [View article](#) [PDF](#)



-
- OPEN ACCESS** 012017
Brain Gym To Increase Academic Performance Of Children Aged 10-12 Years Old (Experimental Study in Tembalang Elementary School and Pedalangan Elementary School Semarang)
M G Marpaung, T P Sareharto, A Purwanti and D Hermawati
[+](#) [Open abstract](#) [View article](#) [PDF](#)
-
- OPEN ACCESS** 012018
Polymeric Membrane Made of Cellulose Isolated from Tropical Water Hyacinth Blended with Chitosan
Titik Istirokhatun, Richa Rachmawaty, Metty Meriyani, Nur Rokhati and Heru Susanto
[+](#) [Open abstract](#) [View article](#) [PDF](#)
-
- OPEN ACCESS** 012019
Identification and Antibacterial Activity of Bacteria Isolated from Marine Sponge *Haliclona (Reniera)* sp. against Multi-Drug Resistant Human Pathogen
Meezan Ardhanu Asagabaldan, D Ayuningrum, R Kristiana, A Sabdono, O K Radjasa and A Trianto
[+](#) [Open abstract](#) [View article](#) [PDF](#)
-
- OPEN ACCESS** 012020
COPE Method Implementation Program to Reduce Communication Apprehension Level in Full Day Junior High School Students
A R Prasetyo
[+](#) [Open abstract](#) [View article](#) [PDF](#)
-
- OPEN ACCESS** 012021
Influence of ENSO and IOD to Variability of Sea Surface Height in the North and South of Java Island
Ahmad Fadlan, Denny Nugroho Sugianto, Kunarso and Muhammad Zainuri
[+](#) [Open abstract](#) [View article](#) [PDF](#)
-
- OPEN ACCESS** 012022
The Roles of Macrobenthic Mollusks as Bioindicator in Response to Environmental Disturbance : Cumulative *k*-dominance curves and bubble plots ordination approaches
Sapto P. Putro, Fuad Muhammad, Amalia Aininnur, Widowati and Suhartana
[+](#) [Open abstract](#) [View article](#) [PDF](#)
-
- OPEN ACCESS** 012023
The Effect of Early Mosquito Insecticides Exposure on Sprague Dawley Rat Testis: A Histopathological Feature Towards Malignancy?
Tri Indah Winarni, Milzam Auzan Aziman, Anindyo Abshar Andar and Ika Pawitra
[+](#) [Open abstract](#) [View article](#) [PDF](#)
-
- OPEN ACCESS** 012024
Analysis of heavy metal content of Cd and Zn in ballast water tank of commercial vessels in Port of Tanjung Emas Semarang, Central Java Province
A Tjahjono, A N Bambang and S Anggoro
[+](#) [Open abstract](#) [View article](#) [PDF](#)
-
- OPEN ACCESS** 012025
Proteomics study of extracellular fibrinolytic proteases from *Bacillus licheniformis* RO3 and *Bacillus pumilus* 2.g isolated from Indonesian fermented food
Diana Nur Afifah, Ninik Rustanti, Gemala Anjani, Dahrul Syah, Yanti and Maggy T. Suhartono
[+](#) [Open abstract](#) [View article](#) [PDF](#)
-
- OPEN ACCESS** 012026
Screening Antibacterial Agent from Crude Extract of Marine-Derived Fungi Associated with Soft Corals against MDR-*Staphylococcus haemolyticus*
A Sabdaningsih, O Cristianawati, M T Sibero, H Nuryadi, O K Radjasa, A Sabdono and A Trianto



[+ Open abstract](#) [View article](#) [PDF](#)

OPEN ACCESS

012027

Exploration of Fungal Association From Hard Coral Against Pathogen MDR *Staphylococcus haemolyticus*

O Cristianawati, O K Radjasa, A Sabdono, A Trianto, A Sabdaningsih, M T Sibero and H Nuryadi

[+ Open abstract](#) [View article](#) [PDF](#)

OPEN ACCESS

012028

Isolation, Identification And Screening Antibacterial Activity from Marine Sponge-Associated Fungi Against Multidrug-Resistant (MDR) *Escherichia coli*

Mada Triandala Sibero, Aninditia Sabdaningsih, Olvi Cristianawati, Handung Nuryadi, Ocky Karna Radjasa, Agus Sabdono and Agus Trianto

[+ Open abstract](#) [View article](#) [PDF](#)

OPEN ACCESS

012029

Isolation, Characterisation and Antagonistic Activity of Bacteria Symbionts Hardcoral *Pavona* sp. Isolated from Panjang Island, Jepara Against Infectious Multi-drug Resistant (MDR) Bacteria

D. Ayuningrum, R. Kristiana, M.A. Asagabaldan, A. Sabdono, O.K. Radjasa, H. Nuryadi and A. Trianto

[+ Open abstract](#) [View article](#) [PDF](#)

OPEN ACCESS

012030

Encapsulation of phycocyanin-alginate for high stability and antioxidant activity

Hadiyanto, Meiny Suzery, Deny Setyawan, Dian Majid and Heri Sutanto

[+ Open abstract](#) [View article](#) [PDF](#)

OPEN ACCESS

012031

The Correlation of Upwelling Phenomena and Ocean Sunfish Occurrences in Nusa Penida, Bali

C K Tito and E Susilo

[+ Open abstract](#) [View article](#) [PDF](#)

OPEN ACCESS

012032

Initial Study Of Potency Thermal Energy Using OTEC (Ocean Thermal Energy Conversion) As A Renewable Energy For Halmahera Indonesia

Y O Andrawina, D N Sugianto and I Alifdini

[+ Open abstract](#) [View article](#) [PDF](#)

OPEN ACCESS

012033

Effect of Reaction Temperature on Biodiesel Production from *Chlorella vulgaris* using CuO/Zeolite as Heterogeneous Catalyst

Dianursanti, M Delaamira, S Bismo and Y Muharam

[+ Open abstract](#) [View article](#) [PDF](#)

OPEN ACCESS

012034

Annona muricata modulate brain-CXCL10 expression during cerebral malaria phase

Kis Djamiatun, Sumia M A Matug, Awal Prasetyo, Noor Wijayahadi and Djoko Nugroho

[+ Open abstract](#) [View article](#) [PDF](#)

OPEN ACCESS

012035

SOCIO-ECONOMIC SPATIAL FOR THE SUSTAINABILITY OF THE ESTUARY ECOSYSTEM IN PELABUHANRATU COASTAL WEST JAVA

L. Supriatna, J. Supriatna and D. Harmantyo

[+ Open abstract](#) [View article](#) [PDF](#)

OPEN ACCESS

012036

The Effect of One-to-one Counseling to Pregnant Women's Knowledge about Anemia in Semarang

N P R Egryani, F Saktini, N Susilaningsih, V D Puspitasari and A R Gumay

This site uses cookies. By continuing to use this site you agree to our use of cookies. To find out more, see our Privacy and Cookies policy.



OPEN ACCESS 012037

Nutrient Content And Acceptability Of Snakehead-Fish (*Ophiocephalus Striatus*) And Pumpkin (*Cucurbita Moschata*) Based Complementary Foods

Etika Ratna Noer, Aryu Candra and Binar Panunggal

[+ Open abstract](#) [View article](#) [PDF](#)

OPEN ACCESS 012038

Isolation and Identification of *Aeromonas hydrophila* and *Saprolegnia* sp. on Catfish (*Clarias gariepinus*) in Floating cages in Bozem Moro Krembangan Surabaya

Rahayu Kusdarwati, Kismiyati, Sudarno, Hendi Kurniawan and Yudha Teguh Prayogi

[+ Open abstract](#) [View article](#) [PDF](#)

OPEN ACCESS 012039

The Thermocline Layer and Chlorophyll-a Concentration Variability during Southeast Monsoon in the Banda Sea

Nikita Pusparini, Budi Prasetyo, Ambariyanto and Ita Widowati

[+ Open abstract](#) [View article](#) [PDF](#)

OPEN ACCESS 012040

Identification of wave energy potential with floating oscillating water column technology in Pulau Baai Beach, Bengkulu

I Alifdini, D N Sugianto, Y O Andrawina and A B Widodo

[+ Open abstract](#) [View article](#) [PDF](#)

OPEN ACCESS 012041

Habitat characteristic of two selected locations for sea cucumber ranching purposes

Retno Hartati, Agus Trianto and Widianingsih

[+ Open abstract](#) [View article](#) [PDF](#)

OPEN ACCESS 012042

Social Relation between Businessman and Community in Management of Intensive Shrimp Pond

Indra Gumay Febryano, James Sinurat and Messalina Lovinia Salampeppy

[+ Open abstract](#) [View article](#) [PDF](#)

OPEN ACCESS 012043

Designing Cognitive Intervention to Improve the Awareness Index of the Residents in the Landslide Area

N. Susanto, T. T. Putranto and E. A. Ulfa

[+ Open abstract](#) [View article](#) [PDF](#)

OPEN ACCESS 012044

Genetic diversity of the causative agent of ice-ice disease of the seaweed *Kappaphycus alvarezii* from Karimunjawa island, Indonesia

E Syafitri, S B Prayitno, W F Ma'ruf and O K Radjasa

[+ Open abstract](#) [View article](#) [PDF](#)

OPEN ACCESS 012045

Capacity Building Resource Management Of Coastal Areas To Improve The Local Economic Based By Cross-Cutting Partnerships: Case Study on Panjang Beach Bengkulu City

Titi Darmi

[+ Open abstract](#) [View article](#) [PDF](#)

OPEN ACCESS 012046

The Dynamics of Sea Surface Height and Geostrophic Current in the Arafura Sea

Umaroh, Sutrisno Anggoro and Muslim

[+ Open abstract](#) [View article](#) [PDF](#)



PAPER • OPEN ACCESS

Isolation and Identification of *Aeromonas hydrophila* and *Saprolegnia* sp. on Catfish (*Clarias gariepinus*) in Floating cages in Bozem Moro Krembangan Surabaya

To cite this article: Rahayu Kusdarwati *et al* 2017 *IOP Conf. Ser.: Earth Environ. Sci.* **55** 012038

View the [article online](#) for updates and enhancements.

You may also like

- [The Effectiveness of Vaccines in Gurame \(*Osphronemus goramy*\) and Challenged *Aeromonas hydrophila*](#)
S U Setyaningsih, R Kusdarwati, Rozi et al.
- [Utilization of *Mycelium sterillum* KT31 metabolites with diet for controlling *Aeromonas hydrophila* infection on catfish *Clarias gariepinus*](#)
D Wahjuningrum, K Tarman, N Faradisa et al.
- [Potency of Turmeric in Reducing Motile *Aeromonas Septicaemia* \(Mas\) in *Pangasius hypophthalmus*](#)
M Riau waty, T E Y Sari and A Adelina



ECS Membership = Connection

ECS membership connects you to the electrochemical community:

- Facilitate your research and discovery through ECS meetings which convene scientists from around the world;
- Access professional support through your lifetime career;
- Open up mentorship opportunities across the stages of your career;
- Build relationships that nurture partnership, teamwork—and success!

Join ECS!

Visit electrochem.org/join



Isolation and Identification of *Aeromonas hydrophila* and *Saprolegnia* sp. on Catfish (*Clarias gariepinus*) in Floating cages in Bozem Moro Krembangan Surabaya

Rahayu Kusdarwati¹, Kismiyati², Sudarno³, Hendi Kurniawan⁴ and Yudha Teguh Prayogi⁵

¹Department of Fish Health Management and Aquaculture Faculty of Fisheries and Marine, Airlangga University, 031-5914151,

^{2,3}Department of Fish Health Management and Aquaculture, Faculty of Fisheries and Marine

^{4,5}Study Pograme Aquaculture Faculty of Fisheries and Marine, Airlangga University

rahayukusdar@gmail.com

Abstract. Catfish (*Clarias gariepinus*) is one of the familiar freshwater fish cultured in Indonesia farmer. One of the reason is the high mortality of the catfish infected by *Aeromonas hydrophila* and *Saprolegnia* sp. *Motile Aeromonas septicemia* (MAS) is a common bacterial disease, caused by *Aeromonas hydrophila*, which affects freshwater fish. In Southeast Asia, the outbreak of this disease was firstly reported from West Java in 1980, when a total of 82.5 tons a month of catfish were lost, while in Central Java in 1984, the total loss was 1.6 tons. Saprolegniosis can cause economic loss due to high mortality from its case reaching 10% to 50% . This research aimed to identify and determine the percentage of *A. hydrophila* and *Saprolegnia* sp. the catfish farmed in bozem Moro Krembangan, Surabaya, East Java. Meanwhile, a supporting parameter in this research is the value of water quality parameter including pH, temperature, ammonia and dissolved oxygen that were measured during sampling. The results showed that of the 20 samples taken from the two cages, 19 fish were positively infected by *A. drophila*. percentage of infections of *A. hydrophila* that infect umbo catfish in Moro Krembangan, was 95%, while the percentage *Saprolegnia* sp. was 90%.

1. Introduction

Surabaya has a system of outdoor water reservoirs that have the same functionality with reservoirs namely Bozem. These Bozems include: Bozem Moro Krembangan, Kalidami, Bratang, Rungkut industrial, Wonorejo, Kedurus and Broken Gorge. Ecosystem of Bozem is built as Surabaya is a city in flood-prone with lack of water catchment areas. This is due to the development in the city of Surabaya that develops rapidly. In General Bozem is built without cutting off rivers. In general Bozem serves as a controller and water storage, and the society also utilizes it as a place to fish farming and irrigation of field (planning and development agency of the city of Surabaya, 2010). One of the farmed fish in water of Bozem was catfish. Catfish is one type of fish consumption that are quite popular in Indonesia. Some advantages of the fish are to have meat that are thick and tasty as well as easy maintenance, its relatively quick growth, and high selling prices, so that catfish are largely farmed in to involves several factors: the surroundings (environment), the farmed fish (host), and the disease-causing organisms (pathogens). *A. hydrophila* can affect fish farming and often lead to outbreaks of disease with mortalities occasionally approaching 80-100 percent in a short period of 1-2 weeks [1]. While from the fungus genus, many *Saprolegnia* sp. infect eggs

and freshwater fish which can lead to massive death of fish in fish farms [2]. *Saprolegnia* sp. quickly transmitted to other catfish that were in one pool. Thus, it spread more quickly and potentially inflicts considerable losses for farmers [3].

Fish farming in Bozem Moro Krembangan having some problems such as the water environmental problems that is less support, because the waters such a reservoir of water from various sources and disposal of waste. Based on this research the reason they will do. The purpose of this research is to determine The presence of infection *Aeromonas hydrophila* and *Saprolegnia* sp. on catfish (*Clarias gariepinus*) cultured in Bozem Moro Krembangan Surabaya.

2. Research Methodology

2.1. Research Materials

Research materials that are used in this research are *Clarias gariepinus* obtained from Bozem Moro Krembangan, Surabaya, aquades sterile, spiritus, alcohol 70%, selective medium Tryptic Soy Agar (TSA), Saboraud Dextrose Agar (SDA) and safranin. The instruments used are a petri dish, needle ose, mikropipet, ring, light microscopy, object glass, hot plate stirer, thermometer, pH meters, DO the test kits and ammonia test kit.

2.2. Research Methods

This study used a survey method. The determination of the sampling method used purposive sampling [4]. Sampling is to retrieve data of only a portion of the population who are expected to describe the nature of the population from the object of research.

2.3. Work Procedures

2.3.1. Sampling

Catfish taken for the sample are consuming catfish with a size of 10-15 cm age 2-3 months with a weight of 100-110 grams. The number of cages used for sampling amounted to two cages, the total population is 400 catfish, in one population cage is 200 catfish, and taken a sample of 5% of the population that is as many as 20 catfish out of a total population or 10 for each cage.

2.3.2. Sterilization of Tools

Equipment such as needles of ose before used first were sprayed alcohol 70% then conducted burning directly. Petri dish was sterilized by autoclave at a temperature of 121 ° C with pressure 1 atm for 10-15 minutes.

2.3.3. Isolation of *Aeromonas hydrophila* and *Saprolegnia* sp.

The medium used for the isolation of *A. hydrophila* was Trypticase Soy Agar (TSA), while the medium for isolation of *Saprolegnia* sp. was Saboraud Dextrose Agar (SDA). The isolation was carried out using streak methods at medium of isolation. Furthermore, purification was done by moving the isolates that grew into new media until pure isolate was obtained.

2.3.4. Identification of *Aeromonas hydrophila* and *Saprolegnia* sp.

Bacterial identification was conducted with the macroscopic test, Gram staining and biochemistry test. Observations of macroscopic samples test of catfish included size, shape, and pigmentation seen from the inside, beside and top. Microscopic tests were done by staining Gram by observing the color and shape of bacteria as well as biochemical test was done. Biochemical test involved Motile test, indol test, O/F test, and H₂S test.

Identification of the fungus *Saprolegnia* sp. with macroscopic test and microscopic test. Observations of macroscopic samples test catfish include size, pigmentation (the colour of the colony) and

shape seen from the inside, beside and top. While the observations of the microscopic test were conducted by observing the color, the shape of the hypha, forms spores, Spore and form layout cells of fungi by using inverted microscope [5].

2.3.5. Calculating the percentage of Fish infected by *Aeromonas hydrophila* and *Saprolegnia* sp.

The percentage of infections was the number of fish infected by the bacteria/fungi that are divided with many samples taken multiplied by one hundred. Resulting in the percentage of fish infected with the disease.

$$\text{The percentage of catfish infected bacteria/fungi (\%)} = \frac{\text{Number of infected fish} \times 100}{\text{The number of fish samples}}$$

3. Results and Discussion

3.1 Identification and Isolation of *Aeromonas hydrophila* and *Saprolegnia* sp.

Isolation of *A. hydrophila* and *Saprolegnia* sp. was conducted on 20 samples of fish that were taken that showed pathologic conditions including hemorrhagic septicemia and tail or fin rot. Isolation of a fungus was conducted by taking body parts catfish that showed clinical symptoms of fungus infection. The fish part isolated was part of the surface of the body, fins, gills, and tail, because the parts that would change as result of infection of fungus *Saprolegnia* sp. On the skin of infected catfish there was smooth yarn resembling cotton and spreading to the surface of the skin to another. This is in accordance with statement [6], stating that fish infected with *Saprolegnia* sp. Have objects that resemble cotton on the surface of their body, tail, fins or gills.

The results of the identification of the bacterial isolate showed negative staining Gram, motile, form rod, while biochemical test results are fermentative, positive oxides, positive glucose and negative indol.

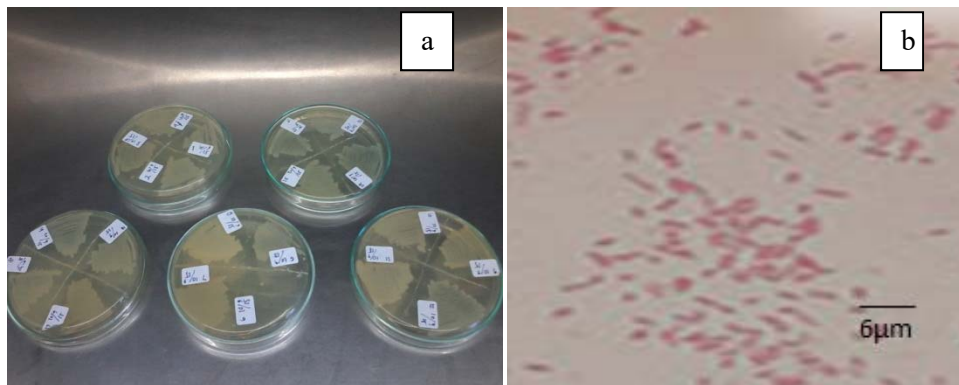


Figure 1. Bacterial isolates (a), (b) bacterial Morphology

Identification of fungus isolate in macroscopic colony characteristics can be seen with a yellowish white with forms such as cotton. This is in accordance with [6], who states that the genus *Saprolegnia* have characterized the colony resembling cotton, colored white and the colony can be found on the surface of the skin, fins and gills.

Microscopically *Saprolegnia* sp. morphology appear to have long Hypha and aseptat (not septad), tube-shaped, and has the zoospora on its corner. Sporangia widens and the short as well as at the end of the sporangia looks a bit dark. The zoospora *Saprolegnia* sp was resulted from the tip of the long Hypha . Zoosporangia *Saprolegnia* SP.that are long and cylindrical has a length

of 180-350 μm in width 20-24 μm [6]. Macroscopic and microscopically Observation can be seen in Figure 2.

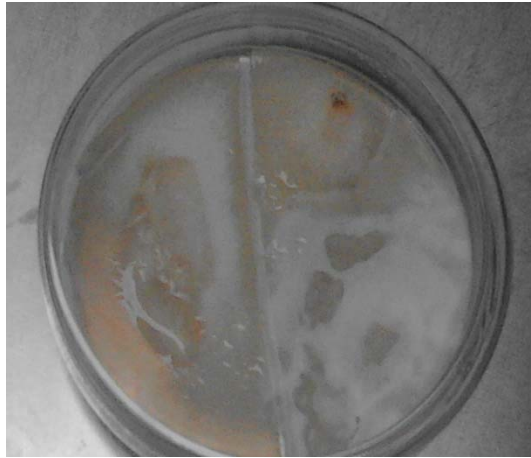


Figure 2. a colony of *Saprolegnia* sp.

One of the types of diseases that are often found in cultivated organisms is bacterial disease caused by the bacterium *Aeromonas hydrophila*, which is the pathogenic bacteria cause disease "Motile Aeromonas Septicemia" (MAS), especially for freshwater fish species in tropical waters [7]. The bacterium *Aeromonas hydrophila* is one of the dangerous disease-causing bacteria in freshwater fish farming. The bacteria attack the Catfish that is one of the leading commodities in freshwater and can infect fish in all sizes which can lead to death until it reaches 80%, resulting in huge losses in the freshwater fish farming ventures [8].

Aeromonas hydrophila is a bacteria that can grow in the waters of the optimum operating temperature of 20-30 ° C [9]. *Aeromonas hydrophila* is able to grow at temperatures up to 37 ° C [10]. *Aeromonas hydrophila* extracellular products of consist of the α and β hemolysin, protease, elastase, lipase, cytotoxin, enterotoxin, gelatinase, caseinase, lecithinase, and leucocidin. The liver is the organ target of *Aeromonas hydrophila* and disruption can have an effect on metabolic processes [11]. *Aeromonas hydrophila* is pathogens because it only can cause disease in fish populations that are weak or as secondary infections when fish are infected with other diseases [12].

The process of when *Aeromonas hydrophila* bacteria infects into the body of the fish is preceded by that bacteria stick on the skin surface by utilizing the flagella to move towards the fish and then use hooks to attach to strong on the outermost layer of a body of fish scales. Scales are covered by the substance chitin. During the process of *Aeromonas hydrophila* bacteria takes plac, it produces enzymes that play a role in kitinase layer of chitin degrades, so that bacteria can easily fit into the body of the fish. In addition to utilizing the *Aeromonas hydrophila* kitinase, the bacteria also secrete enzymes such as lesitinase in an attempt to get into the blood stream and go directly to the kidney to breed [13].

Saprolegnia sp. are fungi with yarn shape, resembling cotton, white to gray and Brown. *Saprolegnia* sp. fungi belongs to the class of Oomycetes, also known as fungi with algae because its nature is similar to that of algae but do not contain chlorophyll [14]. Compiled by the threads of a Hypha, it has no bulkhead separators (aseptat), but the branched into misselium. The walls of *Saprolegnia* sp. Hypha are composed of glycogen and cellulose [9]. Hypha branches *Saprolegnia* sp. form woven wool like yarn. *Saprolegnia* sp. has a Hypha which is larger, tapered shape and able to spread faster than the other fungi.

3.2 The percentage of *Clarias gariepinus* Infected by *Aeromonas hydrophila* and *Saprolegnia* sp.

The data results of the counting of the *Aeromonas hydrophila* percentage of fungi farmed in floating net cage in Bozem Moro Krembangan Surabaya can be seen in table 1.

Table 1. The results of the counting of the percentage of the Catfish infected *Aeromonas hydrophila*.

Cages	The number of Fish Samples (fish)	The number of fish infected by <i>Aeromonas hydrophila</i> (fish)		The percentage (%)
		+	-	
A	10	9	1	90
B	10	10	0	100
The total number of	20	19	1	95

Results data of counting of percentage of fungi *Saprolegnia* sp. observed in cages floating in Bozem Moro Krembangan Surabaya (seen in table 2)

Table 2. The results of the counting of the percentage of the Catfish infected with *Saprolegnia* sp.

Cages of floating	The number of fish sample (fish)	The The number of fish infected by <i>Aeromonas hydrophila</i> (fish)		The percentage (%)
		+	-	
A	10	10	0	100
B	10	8	2	80
Total	20	18	2	90

On this study, the estimated value of water quality is obtained : temperature 30°C, DO 4 ppm, pH 6 - 7 and ammonia 1.0 ppm.

Of the 20 fish samples taken, all were experiencing clinical symptoms such as wounds to the skin also damaged fins and tail. Then at 19 fish's kidney organ were suffered swelling and only 1 fish had not experienced swelling in his kidney. The high percentage of fish infected by *Aeromonas hydrophila* and *Saprolegnia* sp. was 95% and 90% indicating that the waters in Morokrembangan Surabaya Bozem were less support for fish farming activities. Remember that waters had the function as shelter of water, such as rain water and waste water, both household waste as well as industrial waste, with the aim to control the occurrence of floods.

According to [15] *Aeromonas hydrophila* bacteria infection can happen in 4 levels, namely Acute septicemia which is fatal, infection quickly with marked swelling of the internal organs. Sub acute, can be seen with symptoms such as wounds and bleeding on the scales. Chronic can be seen with symptoms such as ulcers and sores of the skin damage whose development lasts a long time. Latent, it can happen with not showed symptoms of the disease, but on the internal organs contained disease-causing bacteria. While infection of *Saprolegnia* sp. on fish generally are secondary infections that precede the onset of bacterial infection, the aquatic environment are not heeded, the parasitic infestations, post-harvest handling, dense stocking high causing easy fish infected with *Saprolegnia* sp. [16]. Bad water quality, low dissolved oxygen, high organic matter content and the presence of bacteria will create an environment that is less good for fish and cause stress. The low oxygen levels in the waters can cause fish become stressed out so that the immune system can decline [17]. At that time, the pathogen will easily fit into the body of the fish, either in the form of bacteria, fungi or parasites. While according to [18], pH changes can cause fish stressed

so that they are easily affected by disease, and automatically low pH can cause the damage on skin, so pathogen can easily infect it. The value of optimal water quality for fish growth, namely: water temperature 28-32 °C. In addition to temperature, DO and pH, the content of ammonia is a factor to consider. The content of DO is in the water so that fish growth is ideal not less than 2 ppm, pH 6.5 to 8.5 and an ammonia content of less than 1 ppm.

4 Conclusion

Catfish (*Clarias gariepinus*) cultured in Moro Krembangan Surabaya, East Java, are mostly infected with *Aeromonas hydrophila* and *Saprolegnia* sp., It is caused by the environmental conditions that are unfavorable. The percentage of catfish (*Clarias gariepinus*) infected with *Aeromonas hydrophila* is 95% and infected with *Saprolegnia* sp. is 90%.

References

- [1] Lukistyowati, I. dan Kurniasih. 2012. Pelacakan Gen Aerolysin dari *Aeromonas hydrophila* pada Ikan Mas yang diberi Pakan Ekstrak Bawang Putih. *Jurnal Veteriner* 13 (1) : 43-50.
- [2] Akbar, J. 2008. Pemanfaatan Ekstrak Bunga Kecombrang (*Nicolaia speciosa horan*) Terhadap Penyembuhan Infeksi Jamur *Saprolegnia* sp. Pada Ikan Nila Merah. Fakultas Perikanan Universitas Lambung Mangkurat.
- [3] Khairyah U., Kismiyati., dan Kusdarwati R. 2013. Identifikasi dan Prevalensi Jamur pada Ikan Gurami (*Osphronemus gouramy*) di Desa Ngrajek, Kecamatan Mungkid, Kabupaten Mungkid, Jawa Tengah.
- [4] Singarimbun dan Effendi. 1995. *Metode Penelitian Survei*. Jakarta : PT Pustaka LP3ES Indonesia.
- [5] Yuasa K., Novita P., Meliya P., dan Edy B.K, 2003. Teknik Diagnosis Penyakit Ikan Budidaya Air Tawar di Indonesia. Japan International Cooperation Agency dan Panduan Diagnosis Penyakit Ikan. Balai Budidaya Air Tawar Jambi. Jambi. Stoskopf, M. K. 1993. *Fish Medicine*. WB Saunders Company. Mexico.
- [6] Rahmaningsih, S. 2012. Pengaruh Ekstrak Sidawayah dengan Konsentrasi yang Berbeda untuk Mengatasi Infeksi Bakteri *Aeromonas hydrophila* pada Ikan Nila (*Oreochromis niloticus*). *Jurnal Ilmu Perikanan dan Sumberdaya Perairan*.
- [7] Sanoesi, E. 2008. Penggunaan Ekstrak Daun Pepaya (*Carica papaya Linn*) terhadap Jumlah Sel Makrofag pada Ikan Mas (*Cyprinus carpio* L) yang Terinfeksi Bakteri *Aeromonas hydrophila*. *Jurnal Penelitian Perikanan*, Vol 11, No. 2.
- [8] Indrawati, I. 2007. Potensi Ekstrak Rimpang Lengkuas (*Alpinia galanga*) terhadap jamur *Saprolegnia* sp. dari telur ikan mas (*Cyprinus carpio*) Secara in Vitro. Skripsi. Fakultas Kedokteran Hewan. Universitas Airlangga. Surabaya.
- [9] Austin, B. and D. Austin. 1987. *Bacterial Fish Pathogen*. Ellis Hoorwood. London. pp. 250-262.
- [10] Cipriano RC, GL Bullock and SW Pyle. 1984. *Aeromonas hydrophila* and *Motile Aeromonad Septicemia* of Fish. *Fish Diseases Leaflet* 68, US. Fish and Wildlife Service. West Virginia.
- [11] Kabata, Z. 1985. *Parasites and Disease of Fish Cultured in Tropics*. Taylor and Francis, London.
- [12] Mangunwardoyo, W., R. Ismayasari., E. Riani. 2010. Uji Patogenisitas dan Virulensi *Aeromonas hydrophila* Stanier pada Ikan Nila (*Oreochromis niloticus* Lin.) melalui Postulat Koch. *J. Ris. Akuakultur* Vol. 5 Tahun 2010: 245-255.
- [13] Nuryati, S., F.B.P. Sari., dan Taukhid. 2009. Identifikasi dan Uji Postulat Koch Cendawan Penyebab Penyakit pada Ikan Gurami. Program Studi Budidaya Perairan. Fakultas Perikanan dan Ilmu Kelautan. Institute Pertanian Bogor. Bogor.
- [14] Sniezko SF and HR Axelrod. 1971. *Diseases of Fishes*. TFH Publication Ltd., Hongkong.
- [15] Bruno D. W and Woo, P. T. K.. 1999, *Fish Disease and Disorders* vol. 3 (Viral, Bacterial and Fungal Infection). CAB International Publishing, Wallingford, UK. Pp 366-432.
- [16] Shafrudin, D., Yuniarti dan Setiawati, M., 2006. Pengaruh Kepadatan Benih Ikan Lele Dumbo (*Clarias* sp.) Terhadap Produksi Pada Sistem Budidaya Dengan Pengendalian Nitrogen Melalui Penambahan Tepung Terigu. *Jurnal Akuakultur Indonesia* 5(2) : 137-147.
- [17] Taufik, P. 1984. Faktor Kualitas Air Dapat Mempengaruhi Timbulnya Suatu Penyakit Pada Ikan. *Majalah Pertanian* No 3. Departemen Pertanian. Jakarta.