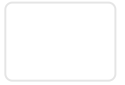


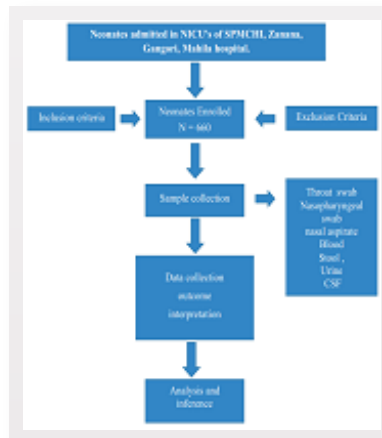
Home > Journals > Journal Of Comprehensive Pediatrics > Issues > Issue 4

Navigate to



 Archive
Vol. 13, Issue 4

 8 Articles
 Nov 2022

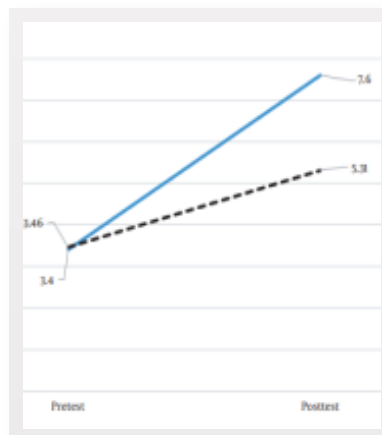


 Research Article

Diagnostic Virology-Based Spectrum of Neonatal Viral Infections at a Tertiary Center: Time to Switch Over

 Vijay Singh Meena, Ram Babu Sharma, Dhan Raj Bagri*, Meenakshi Sharma


 | Final Published



 Research Article

The Novel Method of Teaching Physiology and Pathophysiology of Congenital Hypothyroidism to Medical Students: An Educational

Intervention Study

Afagh Hassanzadeh Rad , Maryam Shahrokhi, Shahin Koohmanaee, Nazanin Medghalchi, Zahra Atrkar Roshan, Manoosh Mehrabi , et al.









Final Published

Characteristic
Age (y)
< 8
8-11
≥ 12
Gender
Boy
Girl
Duration of illness (y)
HbA1c (%)
Caregivers' education
Elementary
Junior high school
Senior high school
High school
PGC (%)
< 15
≥ 15

Research Article

Behavioral Problems among Type 1 Diabetes Mellitus Children with Good and Poor Metabolic Control During COVID-19 Pandemic

Nur Rochmah *, Luh Ayu Asri Wijani , Muhammad Faizi , Yuni Hisbiyah , Rayi Kurnia Perwitasari , I Ketut Alit Utamayasa , et al.



Final Published

Table 1. Frequency of Urinary Dysfunction in Children by Age and Sex^a

Urinary Dysfunction	No	Yes	Total	P Value
Gender				0.04
Girl	66 (33.4)	140 (69.7)	206 (53.2)	
Boy	101 (50.8)	80 (38.3)	181 (46.8)	
Total	167 (41.4)	220 (56.4)	387 (100)	
Age				0.037
7	11 (7.5)	52 (82.5)	63 (16.2)	
8	30 (42.3)	41 (57.7)	71 (18.3)	
9	28 (54.9)	22 (43.0)	51 (13.4)	
10	15 (45.5)	18 (54.5)	33 (8.5)	
11	19 (32.8)	39 (67.2)	58 (14.8)	
12	41 (56.9)	31 (43.1)	72 (18.6)	
13	23 (48)	25 (52)	48 (12.4)	
Total	167 (100)	220 (100)	387 (100)	

^aValues are expressed as No. (%).

Research Article

Frequency of Voiding and Defecation Dysfunction in Primary School Children in Zahedan, Southeast Iran

Touran Shahraki, Simin Sadeghi-Bojrd , Saeedeh Yaghoubi *, Tahereh Ghaderi



Final Published

Parameters	Number of Neonates	Umbilical Cord Diameter	P-Value
Radiobiotic therapy			0.27
Yes	36	9.588 ± 2.9728	
No	289	10.39832 ± 2.396631	
Blood transfusion during pregnancy			0.27
Yes	4	10.54275 ± 2.693425	
No	281	10.38288 ± 2.303904	
History of Pregnancy induced hypertension			0.82
Yes	23	9.82164 ± 2.78663	
No	277	10.33364 ± 2.333687	
Gestational diabetes mellitus			0.39
Yes	26	10.07442 ± 2.28638	
No	288	10.32403 ± 2.398841	
Hypothyroidism			0.3

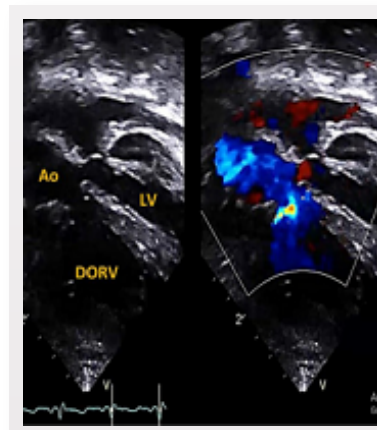
Research Article

Evaluation of Umbilical Cord Thickness and Its Association with Antenatal Maternal Risk Factors: A Cross Sectional Prospective Study

Jaiprakash Narayan, Deepali Bangalia, Laxman Singh Charan, Satyendr Sonkariya *, Dinesh Kumar Barolia , Pukhraj Garg



Final Published



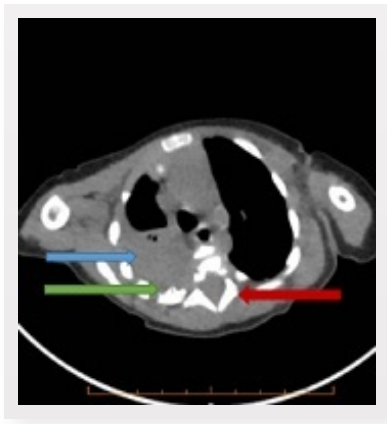
Case Report

Cornelia de Lange Syndrome: A Case Report with a Novel Congenital Heart Disease Association

Mohammad D. Allugmani, Mazen K. El-Harbi, Mohammad S. Khoshhal, Najia Alrabghy, Sabreen Almutery, Abdulsalam D. Alawfi, et al.



Final Published



Case Report

Neuroblastoma in Early Age with Rare Respiratory Manifestation

Narges Lashkarbolouk , Mahdi Mazandarani , Ali Ahani Azari , Lobat Shahkar *, Reyhaneh Shariatalavi 

 | Final Published



Letter

Disguised Marijuana Edibles as a Public Health Concern in Pediatrics

Briana Hernandez, Shabih Manzar*

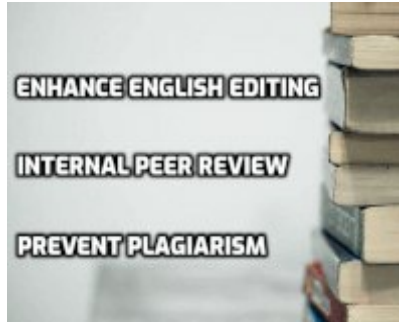
 | Final Published

Journal Features

 Social

FOLLOW US





If you have any questions [contact us](#)

Journal of Comprehensive Pediatrics

Home

Instructions

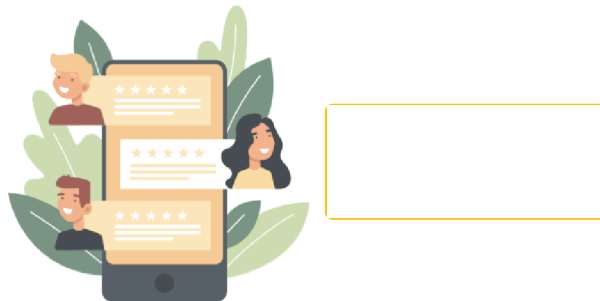
Pricing

Articles

- All Issues
- Current Issue
- In Press
- Accepted Manuscripts

About Journal

- Journal Information
- Boards And Committees
- Indexing And Listing Sources
- Open Peer Review (OPR)
- Publication Ethics And Publication Malpractice Statement
- Journal Metrics
- Contact Us



Brieflands

Science, Technical, Medical Publisher

Since 2007


© Copyright 2023 Reserved by Brieflands.



Navigate to



Boards and Committees

 Last Update: 19 June, 2022 | 13:14

- [Staff Editors](#)
- [Associate Editors](#)
- [Editorial Boards](#)
- [Consultants](#)
- [Methodology](#)
- [Language Editor](#)
- [Contact Boards](#)

Staff Editors

- Brieflands, as an STM publisher, makes a contract for providing publishing services to academic universities and institutions as the journal owners. All editors of journals are introduced by the journal owners and will be re-evaluated at the first of each contract and annually by the governing board of Brieflands to be matched within the [editorial board criterias of independence and responsibilities](#). Therefore, staff editors are completely independent of the publisher.
- The Brieflands editors are paid a fixed salary by the journal owners and their payments are not linked to the number of papers published in the journal. Editors are required to declare all relevant conflicts of interest and do not participate in the review of any paper for which they have a competing interest. The editor-in-chief is responsible for the scientific context of all published materials in the journal. The conflict of interests statements is declared below each staff editor and shows their relationship to activities over the previous 12 months since the last update. However, relevant competing interests from previous years will also be taken into account when deciding whether it is appropriate for an editor to handle a paper.

Chairman



Mansour Bahrami

- *Professor, MD*

- **Published papers in this journal:** 2 out of 376 published article
- **Paid Salary:** Journal of Comprehensive Pediatrics
- Monetary or in kind compensation for self or household member from an organization that may in any way gain or lose financially or in any other way from the publication of papers in Brieflands:
 - **Reimbursement for attending a conference or symposium, Accommodation and travel or Fees for speaking:** No
 - **Fees for organizing education or funds for researches from Publisher:** No
 - **Stocks or shares in Publisher:** No
 - **Other competing interests related to the journal:** Not Declared

Editor in Chief

Mohammadreza Boloursaz

- *Professor, MD*
- **Affiliation:** Department of Pediatrics, Shahid Beheshti University of Medical Sciences, Tehran, Iran
- **Profiles:** [Scholar](#)
- **Published papers in this journal:** 13 out of 376 published article
- **Paid Salary:** Journal of Comprehensive Pediatrics
- Monetary or in kind compensation for self or household member from an organization that may in any way gain or lose financially or in any other way from the publication of papers in Brieflands:
 - **Reimbursement for attending a conference or symposium, Accommodation and travel or Fees for speaking:** No
 - **Fees for organizing education or funds for research from Publisher:** No
 - **Stocks or shares in Publisher:** No
 - **Other competing interests related to the journal:** Not Declared



Managing Editor

Parisa Bahmani

- *Ph.D*
- **Affiliation:** Tehran, Iran
- **Published papers in this journal:** 1 out of 376 published article





Esfandiar Bodaghi

- *MD*
- Pediatricians, Tehran, Iran
- **Profiles:** [ResearchGate](#)



Aliakbar Sayari

- *MD*
- Iran
- **Profiles:** [ResearchGate](#)



Farid Imanzadeh

- *MD*
- Shahid Beheshti university of medical sciences, Tehran, Iran
- **Profile:** [Scholar](#) | [ResearchGate](#)



Mohammadali Nilforooshan

- *MD*
- Iran



Gholamreza Khatami

- *Professor, MD*
- Tehran University of Medical Sciences, Tehran, Iran
- **Profiles:** [ResearchGate](#)



Maryam Razzaghy- Azar

- *MD*
- Iran University of Medical Sciences, Tehran, Iran
- **Profiles:** [ResearchGate](#)



Katayoun Khatami

- *MD*
- Shahid Beheshti University of Medical Sciences Tehran Iran
- **Profiles:** [ResearchGate](#)

Editorial Board:



Yahya Aghighi

- *Professor*
- Tehran University of Medical Sciences, Tehran, Iran
- **Profiles:** [ResearchGate](#)



Alipasha Meysamie

- *MD*
- Tehran University of Medical Sciences, Tehran, Iran
- **Profiles:** [Scholar](#) | [ResearchGate](#)



Abdolvahab Alborzi

- *Professor*
- Shiraz University of Medical Sciences, Tehran, Iran
- **Profiles:** [Scholar](#) | [ResearchGate](#)



Parisa Mohagheghi

- Iran university of medical sciences, Tehran, Iran
- **Profiles:** [Scholar](#)



- *Professor Emeritus*
- Rush University Medical Center, USA
- **Profiles:** [Scholar](#) | [ResearchGate](#)



- *MD*
- Tehran University of Medical Sciences, Tehran, Iran
- **Profiles:** [ResearchGate](#)

Mahmoudreza Ashrafi



- *Professor*
- Tehran University of Medical Sciences, Tehran, Iran
- **Profiles:** [Scholar](#) | [ResearchGate](#)



Moinfar Mohammadreza

- USA



Hossein Fakhraei

- Iran



Abbas Momenzadeh

- Iran



Hossein Gharib

- USA



Guido Nikkhah

- University Medical Center Freiburg, Germany
- **Profiles:** [ResearchGate](#)



Nader Gordjani

- University of Wuerzburg, Germany
- **Profiles:** [ResearchGate](#)



Alireza Ranjbar

- Germany
- **Profiles:** [ResearchGate](#)



Enver Hasanoglu

- American Pediatric Society
- **Profiles:** [ResearchGate](#)



Nosratollah Razi

- Razi



Manouchehr Karjoo

- USA



Saeid Safari

- Iran University of Medical Sciences, Tehran, Iran
- **Profiles:** [ResearchGate](#)



- Iran

Iraj Sedighi



- Hamadan University of Medical Sciences, Tehran, Iran
- **Profiles:** [Scholar](#)

Abolghasem Sepehrnia



- St.Clemens Hospital Geldern, Germany
- **Profiles:** [ResearchGate](#)

Mohammadhossein Soltanzadeh



- Iran
- **Profiles:** [ResearchGate](#)

Hania Szajewska



- Medical University of Warsaw, Poland
- **Profiles:** [Scholar](#) | [ResearchGate](#)

Aliakbar Velayati



- Shahid Beheshti University of Medical Sciences, Tehran, Iran
- **Profiles:** [ResearchGate](#)

Murat Yurdakok



- Hacettepe University, Ankara, Turkey
- **Profiles:** [ResearchGate](#)



- USA

Roya Kelishadi



- *Professor*
- Isfahan University of Medical Sciences, Isfahan, Iran
- **Profiles:** [Scholar](#) | [ResearchGate](#)

Sibylle Koletzko



- University of Warmia and Mazury in Olsztyn, Poland
- **Profiles:** [ResearchGate](#)

Berthold Koletzko



- *MD, Ph.D*
- Children's Hospital and Children clinic at the Dr. von Hauner Children's Hospital, Germany
- **Profiles:** [Scholar](#) | [ResearchGate](#)

Fereidoon Zanganeh



- Usa

Hossein Malekafzali



- *Ph.D*
- Tehran University of Medical Sciences, Tehran, Iran
- **Profiles:** [ResearchGate](#)



Alireza Marandi

- Iran



Behavioral Problems among Type 1 Diabetes Mellitus Children with Good and Poor Metabolic Control During COVID-19 Pandemic

Nur Rochmah ¹,^{*}, Luh Ayu Asri Wijani ¹, Muhammad Faizi ¹, Yuni Hisbiyah ¹, Rayi Kurnia Perwitasari ¹, I Ketut Alit Utamayasa ¹, Neurinda Permata Kusumastuti ¹ and Irwanto Irwanto ¹

¹Department of Child Health, Faculty of Medicine Airlangga University, Dr. Soetomo General Hospital, Surabaya, Indonesia

^{*}Corresponding author: Department of Child Health, Faculty of Medicine Airlangga University, Dr. Soetomo General Hospital, 60286, Surabaya, Indonesia. Email: nur-r@fk.unair.ac.id

Received 2022 September 18; Revised 2022 November 23; Accepted 2022 November 27.

Abstract

Background: Children with type-1 diabetes mellitus (T1DM) often experience emotional and behavioral problems such as anxiety and depression. Social restrictions during the COVID-19 pandemic caused social restrictions and limited access to healthcare facilities, which may have worsened the metabolic control.

Objectives: This study aimed to analyze the behavioral problems among type 1 diabetes mellitus children with good and poor metabolic control during COVID-19 pandemic.

Methods: This cross-sectional study was conducted in January - August 2021 in the Endocrine Outpatient Clinic of General Hospital Dr. Soetomo Surabaya. Type-1-DM children who fulfilled the inclusion criteria were divided into two groups based on metabolic control, including good (HbA1C \leq 8) and poor (HbA1C $>$ 8). The Pediatric Symptom Checklist-17 (PSC-17) was used as a screening tool with the domain internalizing problems (IP), externalizing problems (EP), and attention problems (AP). The data were analyzed using Pearson or Spearman test with Statistical Product and Service Solution (SPSS) version 18.0.

Results: In this study, 27 subjects (17 boys and 10 girls, aged 12.63 ± 3.39 years) were investigated. Of all subjects, only 8 subjects had good metabolic control during the COVID-19 pandemic. Furthermore, 33.3% of the participants had behavioral problems (14.8% IP; 18.5% EP). The frequencies of IP, EP, and AP in the good metabolic control group were 12.5%, 37.5%, and 0%, respectively; while those in the poor metabolic group were 15.8%, 10.5%, and 0%, respectively. There was no significant difference between the good and poor metabolic control groups in terms of behavior problems ($P = 1.00$, IP; $P = 0.14$, EP).

Conclusions: No significant difference was found between good and poor metabolic control groups ($P = 1.00$, IP; $P = 0.14$, EP). However, the frequency of EP was higher in good metabolic control, and the frequency of IP was higher in poor metabolic control.

Keywords: Metabolic Control, Behavioral Problems, Children, Diabetes

1. Background

Children with diabetes mellitus frequently have emotional and behavioral problems (1, 2). An increased rate of behavioral problems such as anxiety problems (1) and depression (3) has been reported in a group of T1DM children compared to a matched control. Globally, governments imposed social restrictions during the COVID-19 pandemic. This restrictive policy, in turn, limited access to health facilities, which was worrisome for hospitalized patients' families and was likely a factor influencing the metabolic control in T1DM patients (4). Poor metabolic control is a risk factor for behavioral problems and an increased risk for complications (5, 6) and mortality (7). The impacts of social restrictions during the COVID-19 pandemic on behavioral

problems and metabolic control in T1DM children are still controversial.

Type 1 diabetes mellitus patients require regular insulin injections and continuous blood sugar monitoring during life. The long-life treatment may cause negative emotion-induced maladaptive behaviors and lead to the behavioral and functional problems as well as the risk of suicide attempts (1, 8-10). However, poor metabolic control is indicative of poor compliance, which is a risk factor for behavioral disorders (11). The correlation between behavioral problems and metabolic control is still controversial (12, 13), especially during the COVID-19 pandemic. Therefore, it is necessary to analyze the behavioral problems among T1DM children with good and poor metabolic control during the COVID-19 pandemic.

2. Methods

This cross-sectional study was carried out from January to August 2021 in the endocrine outpatient clinic of General Hospital Dr. Soetomo, Surabaya, Indonesia. The study was approved by the ethics board of General Hospital Dr. Soetomo Surabaya under 0246/KEPK/VIII/2021, and was performed in accordance with the Helsinki Declaration.

A total of 27 patients diagnosed with T1DM based on the American Diabetes Association (14), aged 4 - 17 years, and routinely controlled at the Pediatric Endocrinology Outpatient Clinic were included in this study. Patients who had life-threatening conditions and were hospitalized in pediatric intensive care unit were already excluded. This study sample size was determined using the sample calculation formula for a cross-sectional study (15).

The patient's age, gender, and level of HbA1C were evaluated. Behavioral problems were assessed using an Indonesian version of the Pediatric Symptom Checklist 17 (PSC-17) questionnaire completed by the subject's parents. The PSC-17 questionnaire was sent via google-form, and the subject's parents were guided by the research team via phone or zoom meetings. Informed consent was sent by short messages to the subject's parents, and it was printed out, signed, and returned to the author by them.

PSC-17 is a 17-question short screening questionnaire that helps identify and assess changes in children's emotional and behavioral problems. The Indonesian version of this questionnaire has high reliability ($\alpha = 0.821$) and validity ($P < 0.05$) (16). Each answer is scored (0 - 2) according to the following question to make a total score suspect behavioral problems if the sum of internalizing values ≥ 5 , externalizing ≥ 7 , attention values ≥ 7 , and if the total score of PSC-17 was ≥ 15 (16, 17). In this study, T1DM patients were divided into two groups, including patients with good metabolic control group (HbA1C > 8) and poor metabolic control group (HbA1C ≤ 8) (16, 17). Glycosylated hemoglobin (HbA1C) reflects the average glucose level for the last 5 - 8 weeks and indicators of metabolic control in diabetic patients.

Collected data were analyzed using Statistical Product and Service Solution (SPSS) version 18.0. Descriptive data were presented as mean \pm SD, while the number of cases and percentages were shown for categorical data. Categorical variables were calculated using Pearson or Spearman analysis based on a normality test with P -value ≤ 0.05 and 95% confidence interval (CI).

3. Results

Our study subjects were 27 children with T1DM including 17 boys and 10 girls, aged 12.63 ± 3.39 (95% CI 11.29, 13.97) years. The baseline characteristics of T1DM patients are presented in Table 1. The average duration of illness was 5.41

± 3.61 (95% CI 3.98, 6.84) years, and the average HbA1c in our study was 10.29 ± 2.39 (95% CI 9.34, 11.24) %. The average HbA1c level among Asian children was 9.1% (18).

Table 1. Demographic Characteristics of Patients with T1DM

Characteristic	No. (%)	Mean \pm SD
Age (y)	27 (100)	12.63 \pm 3.39
< 8	3 (11.1)	
8 - 13	8 (29.6)	
≥ 13	16 (59.3)	
Gender		
Boy	17 (63)	
Girl	10 (37)	
Duration of illness (y)	27 (100)	5.41 \pm 3.62
HbA1C (%)	27 (100)	10.29 \pm 2.39
Caregivers' education		
Elementary	0	
Junior high school	5 (18.5)	
Senior high school	16 (59.3)	
High school	6 (22.2)	
PSC-17 Score	27 (100)	8.70 (\pm 4.75)
< 15	18 (66.7)	
≥ 15	9 (33.3)	

Abbreviations: SD, standard deviation; HbA1C, haemoglobin A1C; PSC-17, Pediatric Symptom Checklist-17; T1DM, type 1 diabetes mellitus.

Nine out of 27 subjects had abnormal PSC-17 scores (≥ 15), and 18 out of 27 ones were within the normal score range (< 15). The average level of HbA1c in the abnormal score group of PSC-17 was 9.43 ± 3.52 (95% CI 0.68, 18.19) %, while the level of HbA1c in the normal score group of PSC-17 was 10.4 ± 2.31 (95% CI 9.43, 11.37)%. No association was detected between behavioral problems with the duration of illness ($P = 0.91$) and age ($P = 0.37$).

Table 2 shows the correlation between behavioral problems and metabolic control. Four out of 27 subjects (14.8%) had internalizing problems, and five out of 27 ones (18.5%) had externalizing problems, but none of them had attention problems. A comparison of behavior problems between the good and poor metabolic control groups showed no significant difference regarding the internalizing or externalizing problems ($P = 1.00$ and $P = 0.14$).

5. Discussion

In this study, no significant difference was found between the good and poor metabolic control groups in terms of behavior problems. During the COVID-19 pandemic, 33.3% of the children with T1DM had behavioral

Table 2. Correlation Between Behavioral Problems and Metabolic Control

Behavioral Problems (PSC-17 Score)	HbA1C Level		P-Value
	≤ 8 (n = 8)	> 8 (n = 19)	
Internalizing			1.00
≥ 5	1.8 (12.5)	3.19 (25.8)	
< 5	7.8 (87.5)	16.19 (84.2)	
Externalizing			0.14
≥ 7	3.8 (37.5)	2.19 (10.5)	
< 7	5.8 (62.5)	17.19 (89.5)	
Attention			-
≥ 7	0.8 (0)	0.19 (0)	
< 7	8.8 (100)	19 (100)	

Abbreviations: HbA1C, haemoglobin A1C; PSC-17, Pediatric Symptom Checklist 17.

problems. This result was consistent with the findings from previous study in 2009, where the rate of behavioral problems was assessed in T1DM patients aged 17 - 19 years, and the rate of 33.3% was recorded for the participants regarding behavioral problems, which was three times higher than that recorded for the control group (9.7%) (13). Another study on Indonesian children with T1DM before the pandemic also showed that 45.8% of the children had behavior problems (2). A recent study found no differences between the diabetic group (n = 132) and the healthy group (n = 131) over three years in terms of psychosocial function such as anxiety, depressive symptoms, anger, or behavioral difficulties (3). Yet, the diabetic group showed a greater decline in social acceptance and a higher rise in disturbed eating behavior. However, the study about behavioral problems in children with T1DM during COVID-19 Pandemic is limited.

According to our study results, the most common behavioral problems among 27 participants were externalizing (18.5%) and internalizing problems (14.8%). Furthermore, the frequency of externalizing problems among participants with good metabolic control was higher than that of internalizing problems. It was shown that T1DM children with good metabolic control mostly had externalizing problems during the COVID-19 pandemic. This result was inconsistent with the finding from a previous study that had found externalizing behavioral problems in poorer glycemic control (19). Another study showed that unstable blood glucose was related to psycho-behavioral changes in T1DM children (20, 21). The presence of externalizing problems is associated with four factors: the aspects of the child development, sociocultural factors, parenting and caregiving experiences, and peer-group experiences (22). Children's peer experiences in school are important factors negatively contributing to the development of the externalizing problems. Since school activities were limited during the COVID-19 pandemic, children did not have peer experiences, nor did they have unlimited access to medical services, and people had to stay home; all these

reasons seemed to be associated with the presence of externalizing problems in this study.

A longitudinal study by Butwicka et al. indicated that children with T1DM had a three times greater risk factor than healthy children regarding behavioral problems, especially in families with psychiatric disorders. It was also observed that T1DM children with behavioral problems made 1.7 times more suicide attempts than children with T1DM who had no comorbid (OR 1.7; 95% CI 1.4 - 2.0) (1). The study by Bernstein et al. demonstrated that the prevalence of mental disorders in children with T1DM were as follows: 31.9% with anxiety disorders, 19.1% with behavioral problems, and 14.2% with mood disorders in the adolescent population (23). Several other studies have identified a relationship between T1DM and various psychosocial conditions, including anxiety disorders, eating disorders, behavioral disorders, mood disorders, and depression (23). These behavioral problems were common in T1DM children and negatively contributed to the disease management and metabolic control.

In our study, no significant association was detected between the level of control metabolic and behavioral problems, and no relationship was observed between behavioral problems with the duration of illness and age. Another large population study based on Danish National Patient Register (NPR) found the highest risk of psychiatric comorbidity among T1DM children diagnosed at ages 10 to 14 years and with five years of diabetes (24, 25). This study also suggested that T1DM children with behavioral disorders had higher mean age than children with non-behavioral disorders. Several studies revealed that behavioral problems (19, 25, 26) and higher stress levels (26, 27) affected the course of the illness and the level of metabolic control. However, other studies failed to find a significant correlation between the level of metabolic control and behavioral problems (13, 28).

Globally, the incidence of T1DM is increasing, and it is anticipated that over 90,000 children are afflicted with T1DM annually (29). In 2018 in Indonesia, 1,220 children

and adolescents with T1DM were identified (30). From 2000 to 2010, T1DM incidence in Indonesia increased sevenfold from 3.88 to 28.19 per 100 million population (31). Our study found that the mean HbA1c value was $10.29 \pm 2.39\%$ during the COVID-19 pandemic. The previous research by Dr. Soetomo showed that the mean HbA1c was $10.06 \pm 2.49\%$ during the first year of the COVID-19 pandemic, while it was $9.20 \pm 1.86\%$ before the lockdown (10). It was shown that metabolic control among children with T1DM was deteriorated during COVID-19. The deterioration of the metabolic control during the lockdown has been found associated with the several factors, such as the caregivers refusal to take their children to the hospitals due to the fear of the contagious virus, limited transportation, and limited health care. This reason negatively impacts metabolic control in patients with diabetes, especially T1DM, who are on insulin therapy. Our result in this regard was in line with the finding from previous study during the COVID-19 pandemic, suggesting that the impact on glycemic control among 52 patients with T1DM was 19 (36.5%) and had hyperglycemic episodes; among them, 4 (7.7%) landed into DKA (Diabetic Ketoacidosis). Eight out of 19 patients had hyperglycemia but had no insulin injections during the lockdown due to nonavailability (4). The mean HbA1c of pre-lockdown and lockdown phases were $8.8 \pm 1.3\%$ and $10 \pm 1.5\%$, respectively, and the difference was statistically significant ($P < 0.001$) (4). However, another study in Italy revealed that metabolic control of adolescents with T1DM was not deteriorated during the restrictions due to COVID-19 pandemics, and was improved in those pursuing their physical activities during the quarantine (32).

Another study that investigated the effects of the COVID-19 pandemic on the treatment of 7000 T1DM children from Sweden's national database (SWEDIABKIDS) found that the proportion of patients with good metabolic control remained unchanged in 2019 and 2020 (33). This may have been attributed to the fact that Sweden, compared to other countries, had an active treatment of T1DM with low mean HbA1c on a national level, including telemedicine treatment as the alternative combination to regular visits when physical distancing was required during the pandemic (32). In our study, on the other hand, telemedicine was not a routine alternative treatment to preserve the quality of care for T1DM. Therefore, T1DM patients had relatively poorer metabolic control during the COVID-19 pandemic.

As for our study limitations, the behavioral problems was not explored during the pre-lockdown phase. Also, comparing the behavioral problems in the pre-lockdown phase and those in the lockdown phase was not an option at the time of our study. Despite the given limitations, the strength of our study lies in the fact that it was conducted during the critical time of COVID-19 pandemic. Our study

results may have been valuable for future studies and caring for patients with T1DM. It was recommended that PSC-17 questionnaire should be used as a useful tool for investigating the behavior problems in children with T1DM, especially in children needing primary care.

4.1. Conclusion

There was no significant difference between the good and poor metabolic control groups regarding the behavior problems ($P = 1.00$, IP; $P = 0.14$, EP). The frequency of EP was higher among children with good metabolic control, and the frequency of IP was higher among children with poor metabolic control.

Acknowledgments

The authors would like to thank the patients and the members of the endocrine teams of Dr. Soetomo for their participation and support.

Footnotes

Authors' Contribution: Study concept and design, N.R., M.F.; Acquisition of data, R.K., L.W.; Analysis and interpretation of data, Y.H., R.K.; Drafting of the manuscript, L.W., Y.H.; Critical revision of the manuscript for important intellectual content, I.I., N.K., I.K.U.; Statistical analysis, L.W., R.K.; Administrative, technical, and material support, I.K.U., M.F.; Study supervision, M.F., I.I., N.K.

Conflict of Interests: There is no conflict of interests in this study.

Data Reproducibility: The dataset presented in the study is available on request from the corresponding author during submission or after publication. The data are not publicly available due to patients' privacy.

Ethical Approval: This study was approved by the ethics board of General Hospital Dr. Soetomo Surabaya with approval number 0246/KEPK/VIII/2021, and was performed in accordance with the Helsinki Declaration.

Funding/Support: No financial or spiritual support was received from any party that could affect the results of this study.

Informed Consent: Informed consent was sent by short messages to the subject's parents, printed out, signed, and returned to the author.

References

1. Butwicka A, Frisén L, Almqvist C, Zethelius B, Lichtenstein P. Risks of psychiatric disorders and suicide attempts in children and adolescents with type 1 diabetes: a population-based cohort study. *Diabetes Care*. 2015;38(3):453-9. [PubMed ID: 25650362]. [PubMed Central ID: PMC4338504]. <https://doi.org/10.2337/dc14-0262>.

2. Rahmawati L, Soedjatmiko S, Gunardi H, Sekartini R, Batubara JR, Pulungan AB. Gangguan Perilaku Pasien Diabetes Melitus tipe-1 di Poliklinik Endokrinologi Anak Rumah Sakit Cipto Mangunkusumo. *Sari Pediatri*. 2016;**9**(4):264. <https://doi.org/10.14238/sp9.4.2007.264-9>.
3. Reynolds KA, Helgeson VS. Children with diabetes compared to peers: depressed? Distressed? A meta-analytic review. *Ann Behav Med*. 2011;**42**(1):29–41. [PubMed ID: 21445720]. [PubMed Central ID: PMC3140576]. <https://doi.org/10.1007/s12160-011-9262-4>.
4. Verma A, Rajput R, Verma S, Balaria VKB, Jangra B. Impact of lockdown in COVID 19 on glycaemic control in patients with type 1 Diabetes Mellitus. *Diabetes Metab Syndr*. 2020;**14**(5):1213–6. [PubMed ID: 32679527]. [PubMed Central ID: PMC7357511]. <https://doi.org/10.1016/j.dsx.2020.07.016>.
5. Nordwall M, Abrahamsson M, Dhir M, Fredrikson M, Ludvigsson J, Arnqvist HJ. Impact of HbA1c, followed from onset of type 1 diabetes, on the development of severe retinopathy and nephropathy: the VISS Study (Vascular Diabetic Complications in Southeast Sweden). *Diabetes Care*. 2015;**38**(2):308–15. [PubMed ID: 25510400]. <https://doi.org/10.2337/dci14-1203>.
6. Lind M, Pivodic A, Svensson AM, Ólafsdóttir AF, Wedel H, Ludvigsson J. HbA1c level as a risk factor for retinopathy and nephropathy in children and adults with type 1 diabetes: Swedish population based cohort study. *Bmj*. 2019;**366**:l4894. [PubMed ID: 31462492]. [PubMed Central ID: PMC6712507]. <https://doi.org/10.1136/bmj.l4894>.
7. Miller KM, Foster NC, Beck RW, Bergenstal RM, DuBose SN, DiMeglio LA, et al. Current state of type 1 diabetes treatment in the U.S.: updated data from the T1D Exchange clinic registry. *Diabetes Care*. 2015;**38**(6):971–8. [PubMed ID: 25998289]. <https://doi.org/10.2337/dci15-0078>.
8. Pulungan AB, Annisa D, Imada S. Diabetes Melitus Tipe-1 pada Anak: Situasi di Indonesia dan Tata Laksana. *Sari Pediatri*. 2019;**20**(6):392. <https://doi.org/10.14238/sp20.6.2019.392-400>.
9. Putera AM, Irwanto I, Maramis MM, Prasetyo RV, Soemyarso NA, Noer MS. Effect of Mental Health Problems on the Quality of Life in Children with Lupus Nephritis. *Neuropsychiatr Dis Treat*. 2020;**16**:1583–93. [PubMed ID: 32617005]. [PubMed Central ID: PMC7326200]. <https://doi.org/10.2147/ndt.s250373>.
10. Rochmah N, Faizi M, Hisbiyah Y, Triastuti IW, Wicaksono G, Endaryanto A, et al. Quality of Life Differences in Pre- and Post-Educational Treatment in Type 1 Diabetes Mellitus During COVID-19. *Diabetes Metab Syndr Obes*. 2021;**14**:2905–11. [PubMed ID: 34234488]. [PubMed Central ID: PMC8254028]. <https://doi.org/10.2147/dms0.s313575>.
11. Hood KK, Huestis S, Maher A, Butler D, Volkening L, Laffel LM. Depressive symptoms in children and adolescents with type 1 diabetes: association with diabetes-specific characteristics. *Diabetes Care*. 2006;**29**(6):1389–91. [PubMed ID: 16732028]. <https://doi.org/10.2337/d0c6-0087>.
12. Dantzer C, Swendsen J, Maurice-Tison S, Salomon R. Anxiety and depression in juvenile diabetes: a critical review. *Clin Psychol Rev*. 2003;**23**(6):787–800. [PubMed ID: 14529698]. [https://doi.org/10.1016/s0272-7358\(03\)00069-2](https://doi.org/10.1016/s0272-7358(03)00069-2).
13. Akbaş S, Karabekiroğlu K, Ozgen T, Tasdemir G, Karakurt M, Senses A, et al. Association between emotional and behavioral problems and metabolic control in children and adolescents with Type 1 diabetes. *J Endocrinol Invest*. 2009;**32**(4):325–9. [PubMed ID: 19636200]. <https://doi.org/10.1007/bf03345721>.
14. American Diabetes Association. Standards of medical care in diabetes-2012. *Diabetes Care*. 2012;**35** Suppl 1(Suppl 1):S11–63. [PubMed ID: 22187469]. [PubMed Central ID: PMC3632172]. <https://doi.org/10.2337/dci12-s011>.
15. Sudigdo S, Sofyan I. *Dasar-dasar metodologi penelitian klinis*. 2. 5th ed. Jakarta, Indonesia: Sagung Seto; 2016. Indonesian.
16. Melani NAD, Ikhtiar I, Nurmalia I, Irwanto. Internal Reliability and Validity of Pediatric Symptom Checklist-17 Indonesian Version for Behavioral Problem Identification in Adolescent Population. *Sapporo Med J*. 2020;**54**(8).
17. Jacobson JH, Pullmann MD, Parker EM, Kerns SEU. Measurement Based Care in Child Welfare-Involved Children and Youth: Reliability and Validity of the PSC-17. *Child Psychiatry Hum Dev*. 2019;**50**(2):332–45. [PubMed ID: 30264230]. <https://doi.org/10.1007/s10578-018-0845-1>.
18. Khanolkar AR, Amin R, Taylor-Robinson D, Viner RM, Warner JT, Stephenson T. Young people with Type 1 diabetes of non-white ethnicity and lower socio-economic status have poorer glycaemic control in England and Wales. *Diabet Med*. 2016;**33**(11):1508–15. [PubMed ID: 26802317]. <https://doi.org/10.1111/dme.13079>.
19. Cohen DM, Lumley MA, Naar-King S, Partridge T, Cakan N. Child behavior problems and family functioning as predictors of adherence and glycemic control in economically disadvantaged children with type 1 diabetes: a prospective study. *J Pediatr Psychol*. 2004;**29**(3):171–84. [PubMed ID: 15131135]. <https://doi.org/10.1093/jpepsy/jsh019>.
20. Zheng XP, Chen SH. Psycho-behavioral changes in children with type 1 diabetes mellitus. *World J Pediatr*. 2013;**9**(3):261–5. [PubMed ID: 23929255]. <https://doi.org/10.1007/s12519-013-0428-y>.
21. van Schaaik NM, Angelique BC, Roelof RJ, van Baar AL. Behavioral Problems and Depressive Symptoms in Adolescents with Type 1 Diabetes Mellitus: Self and Parent Reports. In: Oguntibeju O, editor. *Diabetes Mellitus - Insights and Perspectives*. London, UK: IntechOpen; 2013. <https://doi.org/10.5772/50667>.
22. Deater-Deckard K, Dodge KA, Bates JE, Pettit GS. Multiple risk factors in the development of externalizing behavior problems: group and individual differences. *Dev Psychopathol*. 1998;**10**(3):469–93. [PubMed ID: 9741678]. [PubMed Central ID: PMC2776047]. <https://doi.org/10.1017/s0954579498001709>.
23. Bernstein CM, Stockwell MS, Gallagher MP, Rosenthal SL, Soren K. Mental health issues in adolescents and young adults with type 1 diabetes: prevalence and impact on glycemic control. *Clin Pediatr (Phila)*. 2013;**52**(1):10–5. [PubMed ID: 22988007]. <https://doi.org/10.1177/0009922812459950>.
24. Sildorf SM, Breinegaard N, Lindkvist EB, Tolstrup JS, Boisen KA, Teilmann GK, et al. Poor Metabolic Control in Children and Adolescents With Type 1 Diabetes and Psychiatric Comorbidity. *Diabetes Care*. 2018;**41**(11):2289–96. [PubMed ID: 30270201]. <https://doi.org/10.2337/dci18-0609>.
25. Dybdal D, Tolstrup JS, Sildorf SM, Boisen KA, Svensson J, Skovgaard AM, et al. Increasing risk of psychiatric morbidity after childhood onset type 1 diabetes: a population-based cohort study. *Diabetologia*. 2018;**61**(4):831–8. [PubMed ID: 29242985]. <https://doi.org/10.1007/s00125-017-4517-7>.
26. Anderson BJ, Vangsness L, Connell A, Butler D, Goebel-Fabbri A, Laffel LM. Family conflict, adherence, and glycaemic control in youth with short duration Type 1 diabetes. *Diabet Med*. 2002;**19**(8):635–42. [PubMed ID: 12147143]. <https://doi.org/10.1046/j.1464-5491.2002.00752.x>.
27. Farrell SP, Hains AA, Davies WH, Smith P, Parton E. The impact of cognitive distortions, stress, and adherence on metabolic control in youths with type 1 diabetes. *J Adolesc Health*. 2004;**34**(6):461–7. [PubMed ID: 15145403]. [https://doi.org/10.1016/s1054-139x\(03\)00215-5](https://doi.org/10.1016/s1054-139x(03)00215-5).
28. Lernmark B, Dahlqvist G, Fransson P, Hägglöf B, Ivarsson SA, Ludvigsson J, et al. Relations between age, metabolic control, disease adjustment and psychological aspects in insulin-dependent diabetes mellitus. *Acta Paediatr*. 1996;**85**(7):818–24. [PubMed ID: 8819548]. <https://doi.org/10.1111/j.1651-2227.1996.tb14159.x>.
29. Rawshani A, Sattar N, Franzén S, Rawshani A, Hattersley AT, Svensson AM, et al. Excess mortality and cardiovascular disease in young adults with type 1 diabetes in relation to age at onset: a nationwide, register-based cohort study. *Lancet*. 2018;**392**(10146):477–86. [PubMed ID: 30129464]. [PubMed Central ID: PMC6828554]. [https://doi.org/10.1016/s0140-6736\(18\)31506-x](https://doi.org/10.1016/s0140-6736(18)31506-x).
30. Danne T, Phillip M, Buckingham BA, Jarosz-Chobot P, Saboo B, Urakami T, et al. ISPAD Clinical Practice Consensus Guidelines 2018: Insulin treatment in children and adolescents with diabetes. *Pediatr Diabetes*. 2018;**19** Suppl 27:115–35. [PubMed ID: 29999222]. <https://doi.org/10.1111/pedi.12718>.
31. Katsarou A, Gudbjörnsdóttir S, Rawshani A, Dabelea D, Bonifacio E, Anderson BJ, et al. Type 1 diabetes mellitus.

- Nat Rev Dis Primers.* 2017;**3**:17016. [PubMed ID: [28358037](#)].
<https://doi.org/10.1038/nrdp.2017.16>.
32. Tornese G, Ceconi V, Monasta L, Carletti C, Faleschini E, Barbi E. Glycemic Control in Type 1 Diabetes Mellitus During COVID-19 Quarantine and the Role of In-Home Physical Activity. *Diabetes Technol Ther.* 2020;**22**(6):462-7. [PubMed ID: [32421355](#)].
- <https://doi.org/10.1089/dia.2020.0169>.
33. Ludvigsson J. Effect of COVID-19 pandemic on treatment of Type 1 diabetes in children. *Acta Paediatr.* 2021;**110**(3):933-4. [PubMed ID: [33073367](#)]. [PubMed Central ID: [PMC7984368](#)].
<https://doi.org/10.1111/apa.15627>.



Vote for Global Nursing Award

Let's support & appreciate Nurses. Help us decide the winner for Nursing Award 2023

Aster Guardians

Journal of Comprehensive Pediatrics

COUNTRY

Iran



Universities and research institutions in Iran



Media Ranking in Iran

SUBJECT AREA AND CATEGORY

Medicine

Pediatrics, Perinatology and Child Health

PUBLISHER

Kowsar Publishing Company

H-IND



PUBLICATION TYPE

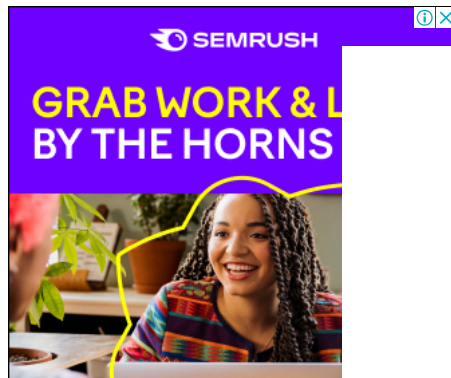
Journals

ISSN

22518150, 22518177

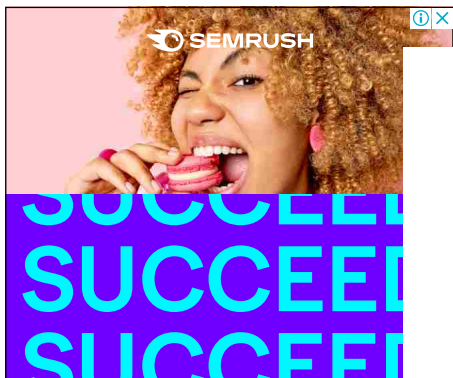
COVERAGE

2013-2021




PLAN YOUR NEXT FLIGHT TO SINGAPORE WITH SINGAPORE AIRLINES





SCOPE



Information not localized

 Join the conversation about this journal

Traducción de Documentos

AJE: Servicios de traducción académica por expertos en su carr

American Journal Experts

 Quartiles


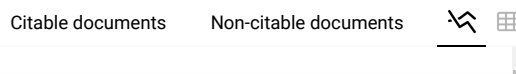
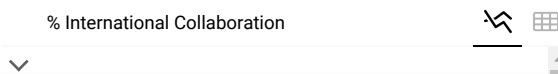
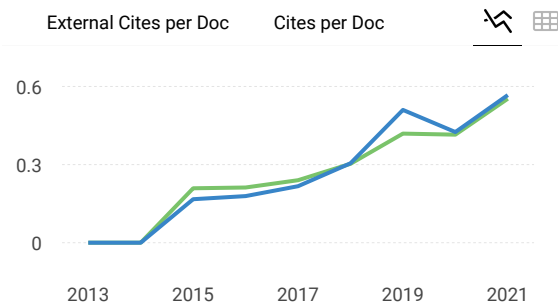
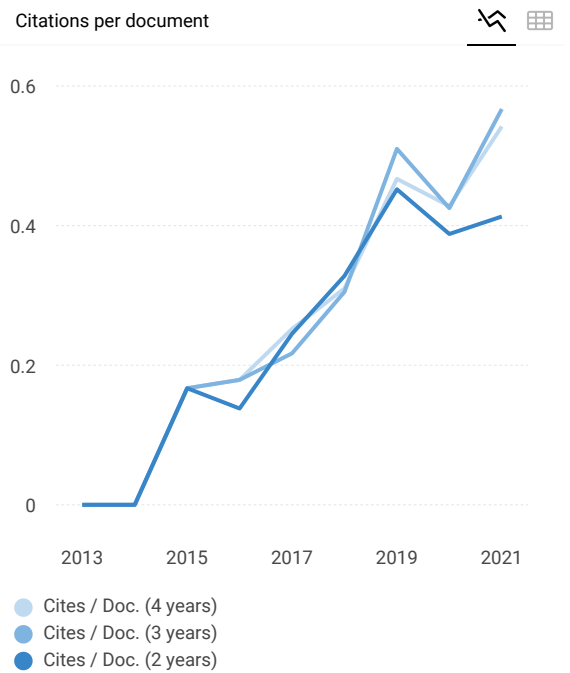
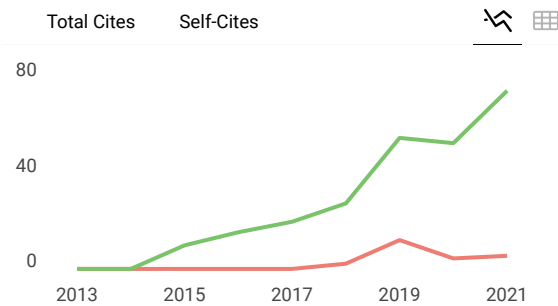
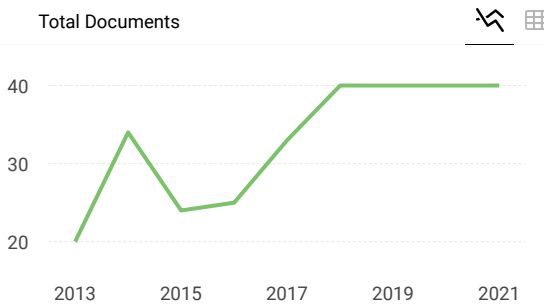
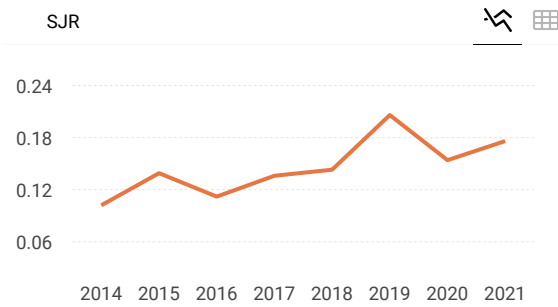
FIND SIMILAR JOURNALS 

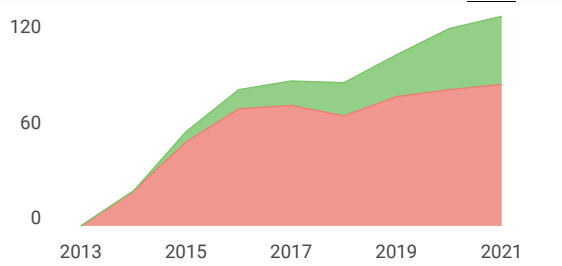
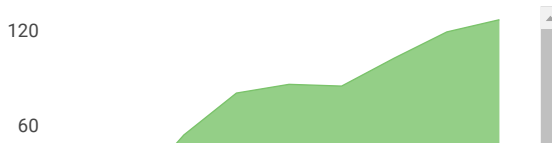
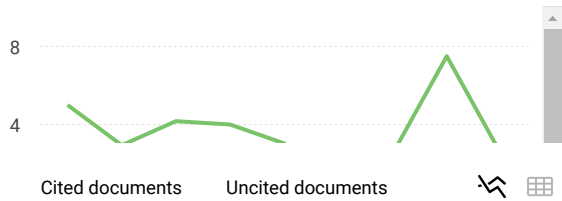


Traducción de Documentos

American Journal Experts

<p>1 Sri Lanka Journal of Child Health LKA</p> <p>58% similarity</p>	<p>2 Iranian Journal of Pediatrics IRN</p> <p>57% similarity</p>	<p>3 European Journal of Pediatrics DEU</p> <p>55% similarity</p>	<p>4 World Journal of Pediatrics CHN</p> <p>54% similarity</p>
--	--	---	--





Journal of Comprehensive Pediatrics

Q3 Pediatrics, Perinatology and Child Health
best quartile

SJR 2021
0.18

powered by scimagojr.com

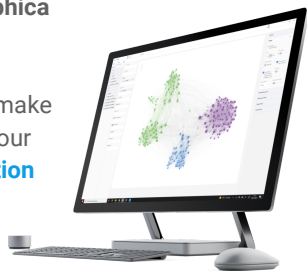
← Show this widget in your own website

Just copy the code below and paste within your html code:

```
<a href="https://www.scimagojr.com" style="display: inline-block; border: 1px solid black; padding: 2px;">
  https://www.scimagojr.com
</a>
```

SCImago Graphica

Explore, visually communicate and make sense of data with our **new data visualization tool**.



Metrics based on Scopus® data as of April 2022

S Shivaprasad Kadole 2 years ago

Want to publish articles

reply



Melanie Ortiz 2 years ago

SCImago Team

Dear Shivaprasad, thank you very much for your comment, we suggest you look for the author's instructions/submission guidelines in the journal's website. Best Regards

Leave a comment

Name

Email

(will not be published)

I'm not a robot reCAPTCHA
Privacy - Terms

Submit

The users of Scimago Journal & Country Rank have the possibility to dialogue through comments linked to a specific journal. The purpose is to have a forum in which general doubts about the processes of publication in the journal, experiences and other issues derived from the publication of papers are resolved. For topics on particular articles, maintain the dialogue through the usual channels with your editor.

Developed by:



Powered by:



Follow us on @ScimagoJR

Scimago Lab, Copyright 2007-2022. Data Source: Scopus®

EST MODUS IN REBUS
Horatio (Satire 1,1,106)

[Cookie settings](#)

[Cookie policy](#)



