
Fwd: Thank you for submitting your review of Manuscript ID PHN-RES-2019-0113.R1 for the Public Health Nutrition

trias mahmudiono <triasmahmudiono@gmail.com>
To: trias-m <trias-m@fkm.unair.ac.id>, reviews@publons.com

Tue, Jul 30, 2019 at 12:22 AM

----- Forwarded message -----

From: **Public Health Nutrition** <onbehalf@manuscriptcentral.com>

Date: Tue, Jul 30, 2019 at 12:21 AM

Subject: Thank you for submitting your review of Manuscript ID PHN-RES-2019-0113.R1 for the Public Health Nutrition

To: <triasmahmudiono@gmail.com>

29-Jul-2019

Dear Mr. Mahmudiono,

Thank you for reviewing manuscript # PHN-RES-2019-0113.R1 entitled "Coping Through a Drought: The Association Between Child Nutritional Status and Household Food Insecurity in the District of iLembe, South Africa" for Public Health Nutrition. Please keep this email as evidence that you have reviewed for Public Health Nutrition.

I very much appreciate the voluntary contribution that each reviewer gives to the journal. Thank you for your participation in the online review process and I hope that we may call upon you again to review future manuscripts.

To thank you for reviewing the manuscript we would like to offer you a 20% discount on Cambridge University Press books. Enter the following code at checkout to receive 20% off online orders at <http://www.cambridge.org/academic>. See full terms and conditions here: <http://www.cambridge.org/index.php?cID=82524>

Code: PeerReview19

<http://www.cambridge.org/PeerReview19>

Please note that Public Health Nutrition publishes a list of reviewers on an annual basis. If you do not want your name to be included, please let the Editorial Office know.

Sincerely,
Alice Gooch

Editorial Assistant, Public Health Nutrition
phn.edoffice@cambridge.org



Coping through a drought: the association between child nutritional status and household food insecurity in the district of iLembe, South Africa

Roisin E Drysdale^{1,2,*} , Urmilla Bob³ and Mosa Moshabela¹

¹School of Nursing and Public Health, University of KwaZulu-Natal, Durban 4041, South Africa: ²DSI-NRF Centre for Excellence in Human Development, University of the Witwatersrand, Johannesburg 2193, South Africa: ³School of Agriculture, Earth and Environmental Sciences, University of KwaZulu-Natal, Durban 4041, South Africa

Submitted 1 February 2019: Final revision received 28 October 2019: Accepted 13 December 2019: First published online 14 May 2020

Abstract

Objective: To assess and compare the association between household food insecurity and child nutritional status over two time-points taking into consideration the effects of a severe drought.

Design: The study used two cross-sectional household surveys during and after a severe drought, consistent with a natural experiment design.

Setting: The study took place in the district of iLembe, KwaZulu-Natal, South Africa.

Participants: Households with children aged <5 years were invited to participate in the survey. Anthropometric measures were taken for the respective children in each of the participating households.

Results: The results indicated that all forms of poor nutritional status increased over the two time-points, with the most significant increases being for stunting ($P < 0.016$) and obesity ($P < 0.001$). There was evidence of an association between increasing food insecurity and stunting ($P < 0.003$) at the end of the drought, but not wasting, underweight or overweight. The results indicated a strong link between chronic food insecurity and chronic undernutrition. The results also showed stronger evidence of an association between food insecurity and stunting for urban households ($P < 0.001$) compared to their rural counterparts ($P < 0.019$).

Conclusions: The negative effects of drought appear to contribute to increased rates of child stunting through higher levels of household food insecurity. Future research should assess this relationship through longitudinal studies. Interventions aimed at improving food security may assist in reducing child malnutrition, but policymakers should consider urban–rural differences as well as climatic and environmental events.

Keywords
Food security
Nutrition
South Africa
Drought
Climate

Globally, the number of people facing some degree of hunger increased from 777 million in 2015 to 815 million by 2017, possibly as a result of ongoing conflicts and climate shocks⁽¹⁾. At the same time, an estimated 22.2 and 7.5% of all children aged <5 years were stunted or wasted, respectively⁽²⁾. A third of all those wasted live in Africa, where an estimated 58.7 million children also face some form of stunting⁽²⁾. Despite continuous efforts, progress towards meeting the international targets on child nutrition and food security has not been sufficient⁽³⁾. Both are multifaceted concepts influenced by a number of factors, but improved food security, although not sufficient alone, is a means to better nutritional status^(4,5).

Household food insecurity impacts nutrition by limiting the quantity and quality of food consumed by all the members of a household⁽³⁾. The smallest children are susceptible to such changes since their development, growth and physiology are dependent on sufficient food intake^(4,6–8). Previous studies have assessed the association between household food insecurity and the prevalence of child malnutrition, but the reported results are inconsistent^(9,10). For example, studies from Kenya⁽⁴⁾ and Ghana⁽¹¹⁾ have found an association between stunting and household food insecurity; however, in Ethiopia⁽⁹⁾ and Nepal⁽¹²⁾, the association was found to be insignificant. Similarly, a study from Nigeria⁽¹³⁾ has found that children in

*Corresponding author: Email roisin.drysdale@wits.ac.za



food-insecure households are five times more likely to be wasted. That said, researchers in Ethiopia have found no statistically significant association⁽⁹⁾. It is not clear why studies have found varying results, but as explained by Humphries *et al.*⁽¹⁰⁾, studies often employed cross-sectional designs that only reflected the possible associations at a specific point in time. They further explained how different food insecurity patterns will have unique associations due to the underlying experiences and causes⁽¹⁰⁾, such as unexpected climatic events. These events can limit food production and availability^(14,15), driving the cost of food up and putting the most vulnerable households at risk of food insecurity. In addition, they can cause displacement or temporary migration of families with negative impacts on their livelihoods⁽¹⁶⁾. The most susceptible to such impacts are those located within developing countries due to high poverty rates, low adaptive capacity and a reliance on rain-fed agriculture^(17,18). Exposure to flooding or droughts has also been found to negatively impact child stunting and wasting^(19–22); however, it is not clear whether this is directly due to food insecurity, migration, livelihood changes or even continuous illnesses. In addition, current studies use a range of different tools to measure food insecurity. Coupled with the wide variety of underlying causes, study setting and study designs, this makes it difficult to make direct comparisons across different studies.

South Africa, a middle-income country⁽²³⁾, had an estimated prevalence of severe food insecurity at 22.5% between 2014 and 2016⁽¹⁾. The country also experiences high levels of chronic undernutrition in children, with recent figures showing child stunting at 27% in 2016⁽²⁴⁾, up by 2% since 2008⁽²⁵⁾. Between 2014 and 2016, the country experienced severe drought, resulting in food price inflation of 7.3%⁽²⁶⁾ and a 47% increase in the cost of staple produce (maize)⁽²⁷⁾. In the district of iLembe, the effects of drought were delayed, prolonged and disproportionately affected the poorest households, with a significant increase in those facing high or severe food insecurity by the end of 2017, by which time the drought had ended (unpublished results). Although there is limited research on the negative health effects of a drought, particularly in South Africa, exposure to a drought during infancy has been estimated to increase the risk of disability later in life by 3.5–5.5%, specifically for physical and mental disabilities⁽²⁸⁾. It is also anticipated that due to changes in river flows, drinking water supplies may become contaminated, resulting in outbreaks of diseases such as cholera and dysentery⁽²⁹⁾. In addition, a drought can have multiple adverse effects on health outcomes that vary depending on a number of factors, including the underlying vulnerability of the population and the intensity or duration of the drought⁽³⁰⁾. While the negative health effects of a drought are apparent, there is little evidence to highlight how a drought may impact nutrition. This article aims to address this gap by measuring child

nutritional status during and after a drought. In addition, it assesses the association between child nutritional status and household food insecurity, taking time and the drought into consideration. Due to the heightened experience of food insecurity after a drought, it was hypothesised that the nutritional status of children would be worse in the second study period, and that children living in food-insecure households would more likely be malnourished.

Methods

This article reports on the data from a larger research project that measured and compared household food insecurity and child nutritional status in the district of iLembe, KwaZulu-Natal. The study used a natural experimental design repeating two cross-sectional household surveys. According to Remler and Van Ryzin⁽³¹⁾, a natural experiment uses a naturally occurring situation such as a flood or heatwave, and is able to make comparisons after the event. Such studies are often difficult to replicate but have a 'unique power to test hypotheses at ecologically realistic scales'^(32, p. 331). Given the threat of climate change and the acceleration of human transformation, such experiments can be extremely useful for both ecological and health studies⁽³²⁾. This study uses the occurrence of severe drought experienced between 2014 and 2016 as the natural variable with the first survey taking place in November 2016 while the drought was ongoing. The second household survey was conducted a year later when the drought had come to an end.

Study area

The study took place in the district of iLembe, located in the South African province of KwaZulu-Natal with a total population of 606 809 and 157 692 households⁽³³⁾. The area lies along the eastern coast of South Africa and is situated north of Durban, the province's major city. The district is divided into four sub-districts – KwaDukuza, Mandeni, Maphumulo and Ndwedwe – and further into seventy-seven local wards. Agriculture is the fourth largest industry to contribute to employment within the district⁽³⁴⁾; however, the area experiences high levels of unemployment at 30.6%⁽³⁵⁾. Nutritional status in children in the area is relatively very poor, with figures from 2014 showing 21.1% of children aged <5 years being stunted and a further 7.5% severely stunted⁽³⁶⁾. The province was affected by severe drought between 2014 and 2016. In 2016, the average annual rainfall was approximately 804.7 mm, and by 2017, this increased to 1132.5 mm (unpublished results). Although the average rainfall during the drought appeared to be high, the area had experienced an hydrological drought, defined as 'a lack of water in the hydrological system, manifesting itself in abnormally low streamflow in rivers, and abnormally low levels in lakes

reservoirs and groundwater^(37, p. 359). The low water levels in reservoirs caused water shortages and restrictions in the area, with taps reportedly being shut off for up to 12 h a day⁽³⁸⁾. Although the water levels had increased by 2017, the effects of the drought were still being felt by the poorest households (unpublished results).

Sampling

The overall study had two outcome variables: household food insecurity and child nutritional status. Households were eligible for participation on the basis that they had at least one child aged <5 years available for the study. Given the numerous methods for measuring food insecurity and the difficulty in obtaining a national prevalence at the time of data collection, the researchers decided to use child nutritional status as the main outcome variable in the following sampling equation:

$$n = (z^2) \left(\frac{(p)(q)}{d^2} \right)$$

$$n = (1.96^2) \left(\frac{(0.1)(0.9)}{0.03^2} \right)$$

$$n = 384 \cdot 16$$

Considering an estimated global prevalence of acute child malnutrition of 10 % (P), a degree of precision of 3 % (d)

and a CI of 95 % (z), 384 children needed to be included. Assuming a household would have only one child aged <5 years and a non-response rate of 5 %, a target of 402 household surveys was set.

From the seventy-seven local wards in the district, forty-nine were eligible for selection based on an average monthly income of R1200 (\$82) per month. The forty-nine wards were listed and given a numerical identifier, from which ten wards were randomly selected. While the same wards were used during both time-points, the households selected varied. In round 1, forty households were randomly selected in each of the ten wards. Data collectors were advised to visit every fifth household, and should that household not have a child aged <5 years, the next household was visited until a household with a child was found. Following this, every fifth house was visited again. In round 2, the number of households sampled in each ward was done through probability proportional to size (PPS)⁽³⁹⁾. Data collectors were advised to follow the same process as before by visiting every fifth household until the desired target for the ward was met. Data from round 1 was weighted based on ward sample sizes from round 2, which were self-weighted following the PPS. This ensured that both samples were representative of the population and were eligible for comparison. The full sampling process can be seen in Fig. 1.

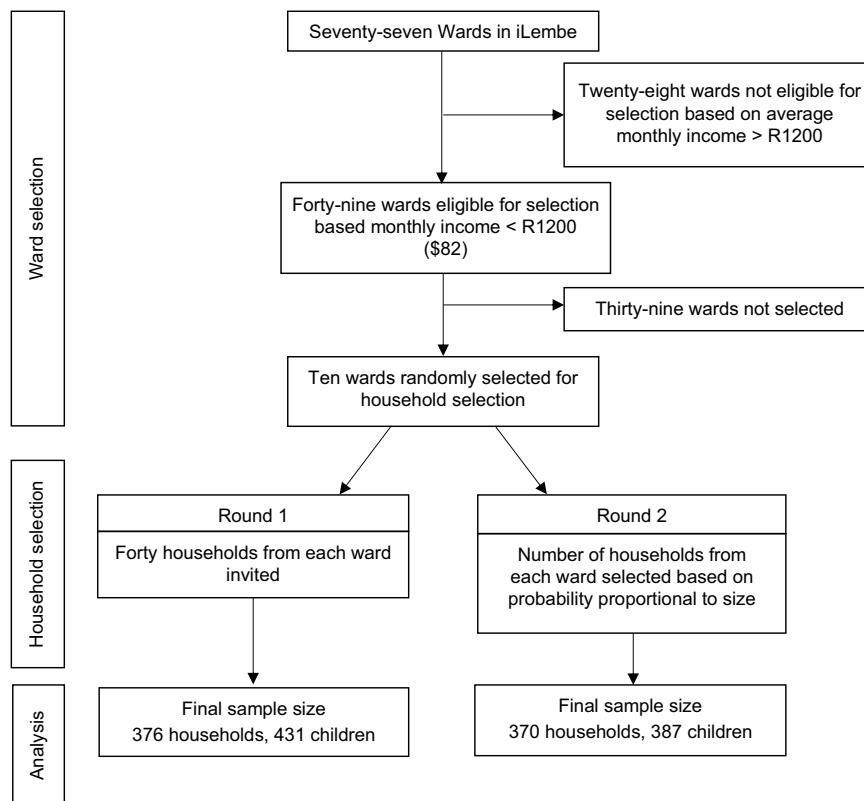


Fig. 1 Participant sampling process



Household survey

The main caregiver of each child was requested to fill in a questionnaire capturing information on household characteristics, food and water and the local environment. Each participant was presented with a list of twelve coping strategies and advised to state the frequency in which each one had been used within the last year during times of limited food. Based on these coping strategies, food insecurity was measured using a Coping Strategies Index (CSI) adapted specifically for implementation in iLembe through a preliminary fieldwork⁽⁴⁰⁾. Each coping strategy had been given a severity score ranging from 1 to 4, with 1 being the least severe, a strategy likely to be carried out first, and 4 being the most severe, a strategy that would be considered a last resort. A CSI score was calculated for each household by multiplying the frequency of each coping strategy by its related severity score and summing up the total. A score of 0 indicated that a household had reported no food insecurity and thus experienced no food shortages, while a higher CSI score signalled a more severe experience. Food insecurity was categorised based on the maximum CSI score from the two rounds, namely none, low, moderate, high or severe. Information on all available children aged <5 years was collected through the questionnaire and included data on their mother, their health and their feeding practices. The child's age was recorded in months and years, and anthropometric measures were taken for all the available children aged <5 years. Children aged <2 years were measured in a recumbent position from their crown to their feet to the nearest centimetre using Seca[®] length boards. Children aged >2 years were measured from their crown to the floor to the nearest centimetre, while standing barefoot against a wall, using Seca[®] measuring tapes. Children aged <2 years were weighed while being held by their caregiver on a Seca[®] electronic flat scale that allowed for the mother/child function. Children aged >2 years were weighed standing alone without shoes on the same scale to the nearest gram, and measurements were repeated for accuracy. If the measurements were not the same, a third or fourth was taken and the most common one was recorded. Height-for-age *z*-scores (HAZ), weight-for-height *z*-scores (WHZ) and weight-for-age *z*-scores (WAZ) were computed using the WHO's Anthro 3.2.2 and categorised based on the WHO growth standards⁽⁴¹⁾. Children with *z*-scores <−2 SD were deemed as stunted for HAZ, underweight for WAZ and wasted for WHZ. Those with *z*-scores <−3 SD were deemed as severe in each category. Children with a *z*-score >+2 SD for WHZ were deemed as overweight and those >+3 SD were categorised as obese. Normal HAZ and WAZ scores were that of >−2 SD. Normal WHZ scores were between −2 and +2 SD.

Data analysis

Data were captured and analysed using Stata I/C 13. An index of socioeconomic status was calculated for each

household using the principal components analysis (PCA)⁽⁴²⁾. Variables often attributable to a household's socioeconomic status were incorporated into the index, including income, number of people in the household, dwelling type and water, sanitation and hygiene access. In addition, ownership of items such as a television or fridge was also included. A household was categorised as having a low, medium or high socioeconomic status through this approach. Based on the PCA scores calculated in each round, the poorest third of the sampled population were categorised as low; the middle third as medium; and the richest as high socioeconomic status.

Descriptive statistics were used to show the demographic profiles of households and individual characteristics and nutritional status of children included in both rounds of the study. χ^2 was calculated on a number of household and child variables to determine if the sample characteristics varied significantly over the two time-periods. Simple linear regression was employed to determine the association between child nutritional status and water, sanitation and hygiene (WASH) access, as well as the relationship between nutritional status and household food insecurity. Continuous CSI scores for each household were used to represent food insecurity as the independent variable. The dependent variables used for child nutritional status were the continuous *z*-scores for HAZ, WAZ and WHZ. Multiple linear regression was then carried out taking into consideration additional variables that may impact child nutritional status. The variables incorporated into the model were chosen through the stepwise function in Stata and included how the child is fed, mother's education, household socioeconomic status and child health status. Simple linear regression was also carried out to assess the association between child nutritional status, their location and the frequency in which households carry out certain coping strategies. All statistical tests were considered significant with a *P*value <0.05.

A small number of households had more than one child aged <5 years in each time-point, which could potentially skew the results. In order to assess whether a cluster analysis was required at the household level, the researchers tested different cluster analysis models and a sensitivity analysis involving only one child per household. There was little variation in the presented results and conclusions. The researchers therefore chose not to conduct a cluster analysis based the following recommendation by Lambert⁽⁴³⁾:

accounting for person group clustering will not in many examples make a substantial difference to the results of statistical analyses ... until it has been examined ..., there is always the possibility that failure to consider person group clustering will lead to mis-specified results. (p. 33)

Ethical considerations

Ethical approval was obtained from the Humanities and Social Sciences Research Ethics Committee from the

University of KwaZulu-Natal (HSS/1500/016D). Prior to the household survey, participants were briefed about the purpose of the study in both isiZulu and English. An informed consent, also written in isiZulu and English, was signed by all participants. Permission to include a child was granted by the main caregiver who supervised all activities.

Results

Household characteristics

In total, 431 children from 376 households were included in round 1 of data collection, and 387 children from 370 households in the round 2. Information on household demographics is provided in Table 1. The income of households increased between the two rounds, with 44.7% of households having a monthly income under R1000 (\$68) in round 1 compared with 5.4% in round 2 ($P < 0.001$). In addition, 10.8% more households earned above

R5000 (\$342) per month in round 2. Unemployment was lower in round 2, with a higher proportion either being employed or self-employed ($P < 0.001$). There was also a higher proportion of households relying on an old-age pension in round 2, which was more than R1500 (\$103) a month, compared to a child support grant, which was less than R400 (\$27) in both rounds^(44,45). The type of dwelling was similar during both rounds, with >70% living in a formal concrete building. There was strong evidence of change in terms of water, sanitation and hygiene access between the two rounds. The majority of households relied on tap water either within their dwelling or from a public standpipe during both rounds. What did change was the reliance on a river or dam and a water tank ($P < 0.001$). The proportion of those using a river or dam decreased by 11.4% from round 1 to round 2, while those who relied on a water tank increased by 13.6% by round 2. Fewer households had access to a bath within their dwelling, with more making use of a bucket wash system in round 2 ($P < 0.001$). There was an increase in the number of

Table 1 Household characteristics of the study population

Description	Round 1		Round 2		P-value
	n	%	n	%	
Mean household size	5	–	7	–	–
Socioeconomic status					0.954
High	122	32.4	122	33.0	
Medium	130	34.6	124	33.5	
Low	124	33.0	124	33.5	
Household monthly income					<0.001*
R0–R1000 (\$0–\$68)	168	44.7	20	5.4	
R1001–R5000 (\$67–\$342)	157	41.8	257	69.5	
>R5001 (>\$343)	50	13.3	89	24.1	
Employment					<0.001*
Employed	71	18.9	82	22.2	
Unemployed	291	77.4	240	64.9	
Self-employed	1	0.3	31	8.4	
Dwelling type					0.377
Formal building	263	70.0	275	74.3	
Traditional dwelling	99	26.3	85	23.0	
Informal dwelling	14	3.8	10	2.7	
Water access					<0.001*
Tap in house	83	22.1	142	38.4	
Public standpipe	165	43.9	99	26.8	
River/dam	115	30.6	71	19.2	
Water tank	8	2.1	58	15.7	
Bathing access					<0.001*
Bath in dwelling	112	29.9	49	13.2	
Shower in dwelling	56	14.8	61	16.5	
Bucket wash	207	55.0	260	70.3	
Toilet access					0.020*
Flush toilet (inside)	61	16.2	91	24.6	
Flush toilet (outside)	35	9.4	31	8.4	
Pit latrine	274	72.9	244	66.0	
Food insecurity status (CSI score)					0.001*
None (0)	102	27.1	105	28.3	
Low (1–30)	194	51.6	164	44.3	
Moderate (31–60)	74	19.7	71	19.2	
High (61–90)	6	1.6	25	6.8	
Severe (91–120)	–	–	5	1.4	

*P-value significant <0.05 for χ^2 analysis.



participants who had access to a flush toilet within their home in round 2, and a decrease in those using a pit latrine ($P < 0.020$). Food insecurity categories and their respective CSI scores are shown in Table 1. There is strong evidence to suggest that household insecurity significantly increased between rounds 1 and 2 ($P < 0.001$). Although there was

very little change in the proportion facing no food insecurity, and a decrease in those facing low or moderate food insecurity, the proportion facing high food insecurity increased from 1.6% in round 1 to 6.8% in round 2. In addition, no households were facing severe food insecurity in round 1, but 1.4% were by round 2.

Table 2 Descriptive characteristics, health conditions and nutritional status of sampled children aged <5 years

Description	Round 1		Round 2		P-value
	n	%	n	%	
Sample size	431	–	387	–	–
Age in months					
0–11	56	13.0	29	7.5	0.003*
12–23	62	14.3	47	12.1	
24–35	107	24.9	77	19.9	
36–47	99	23.0	101	26.1	
48–59	107	24.8	133	34.4	
Gender					
Male	207	48.1	196	50.6	0.455
Female	224	51.9	191	49.4	
Mother alive					
Yes	410	95.2	359	92.8	0.321
No	9	2.0	10	2.6	
Unknown	12	2.8	18	4.7	
Mother's education level					
None	19	4.4	17	4.4	0.023*
Primary school	63	14.7	39	10.1	
Secondary, grade 10	132	30.7	93	24.0	
Secondary, matric	182	42.1	206	53.2	
Higher education	19	4.4	13	3.4	
Unknown	16	3.7	19	4.9	
HIV status					
Positive	12	2.8	1	0.3	–
Negative	353	82.0	65	16.8	
Undisclosed	66	15.2	321	83.0	
Chronic health condition					
Yes	35	8.1	32	8.3	<0.001*
No	370	85.9	172	44.4	
Unknown	26	6.0	183	47.3	
Diarrhoea in the last 6 months					
Yes	77	17.9	25	6.5	<0.001*
No	354	82.1	362	93.5	
Vomiting in the last 6 months					
Yes	84	19.5	47	12.1	0.004*
No	347	80.5	340	87.9	
Flu in the last 6 months					
Yes	169	39.2	7	1.8	<0.001*
No	262	60.8	380	98.2	
Fever in the last 6 months					
Yes	65	15.1	119	30.8	<0.001*
No	366	84.9	268	69.3	
HAZ					
Normal	290	67.4	233	60.2	0.016*
Stunted	70	16.3	59	15.3	
Severely stunted	71	16.3	95	24.6	
WAZ					
Normal	415	96.2	359	92.8	0.082
Underweight	9	2.2	15	3.9	
Severely underweight	7	1.7	13	3.5	
WHZ					
Obese	53	12.3	85	22.0	<0.001*
Overweight	87	20.1	70	18.1	
Normal	281	65.2	216	55.8	
Wasted	8	1.8	5	1.3	
Severely wasted	2	0.6	11	2.9	

HAZ, height-for-age z-score; WAZ, weight-for-age z-scores; WHZ, weight-for-height z-scores.

*P-value significant <0.05 for χ^2 analysis.



Child characteristics

The descriptive statistics of children are shown in Table 2. There was a significant change in the age of children ($P < 0.003$), with a higher proportion aged between 36 and 47 and 48 and 59 months by round 2. There were also fewer children aged between 0 and 11, 12 and 23 and 24 and 35 months in round 2. There was very little difference in the gender of children in both rounds, with almost 50 % of children belonging to either sex. For over 90 % of children, the mother was still alive at the time of data collection during both time-points. There was some evidence to suggest that mother's education was better in round 1, with 53.2 % having completed secondary school to matric level, compared to 42.1 % in round 1 ($P < 0.023$). Fewer had completed up to grade 10 or primary school by round 2, but the same proportion had no education in both rounds.

The results highlighting child health status are shown in Table 2. In both rounds, a small proportion of children was reported as being HIV-positive. In round 2, more caregivers chose not to disclose the child's HIV status. In terms of other chronic health conditions, 8.1 and 8.3 % had one such condition in rounds 1 and 2, respectively. The caregivers were also asked whether the child had experienced health problems within the last 6 months such as diarrhoea, vomiting, flu or a fever. Fewer children had suffered from flu, diarrhoea or vomiting in round 1 compared to round 2. The proportion of children reported to have experienced a fever doubled from 15.1 % in round 1 to 30.8 % in round 2.

Nutritional status

Between rounds 1 and 2, there was an increase in all nutritional outcomes, including overweight and obesity. There was a small increase in the number of children who are underweight and severely underweight from round 1 to round 2; however, the difference was not statistically significant ($P < 0.082$). There was strong evidence to suggest that child stunting, depicted by HAZ, changed significantly from round 1 to round 2 ($P < 0.016$), as seen in Table 2. Although the proportion of stunted children dropped slightly from 16.3 to 15.3 % by round 2, there was an increase of 8.3 % in those deemed severely stunted. There was also evidence to suggest a significant change in child wasting and obesity calculated through WHZ ($P < 0.001$). Although the proportion of children who were wasted or severely wasted only increased marginally, the increase in the proportion of obese children was much larger, from 12.3 % in round 1 to 22.0 % in round 2.

Table 3 shows the results of regression analysis testing the association between child nutritional status and access to WASH facilities. During the drought, there were negative associations between access to an outdoor flush toilet and child's HAZ ($P < 0.000$) and WAZ ($P < 0.024$). There were also positive associations between child's WHZ and access

to a pit latrine ($P < 0.029$), and child's WAZ and access to water through a public standpipe ($P < 0.021$) or water tank ($P < 0.031$). After the drought, only a positive association for WAZ and bathing access through a shower within the dwelling ($P < 0.037$) was found.

Food insecurity

Table 4 shows the levels of food insecurity faced by the children whose WHZ, HAZ and WAZ did not fall under 'normal'. In round 1, 60 % of the children who were stunted lived in a household facing low food insecurity, with only 1 % facing a high or severe level of food insecurity. By round 2, there was a significant increase in those facing moderate or high and severe food insecurity at 20.8 and 11.0 %, respectively. This was also the case of a number of children who are overweight or obese, with 5.2 % more facing moderate food insecurity, and 7.6 % more facing high or severe levels by round 2. The proportions of those wasted and either food-secure or with low food insecurity remained similar between the rounds. There was, however, a small decrease in those facing moderate food insecurity, but an increase in those facing high or severe food insecurity. Similarly, for those who were underweight, the proportion who were moderately food-insecure decreased by round 2, but there was a 10.7 % increase in those facing high or severe food insecurity.

The results of simple and multiple linear regressions are shown in Table 5. Although there were increases in overweight, underweight and wasted children living in households facing high or severe food insecurity after the drought, no evidence was found to suggest an association between child's WHZ or WAZ and food insecurity. Following a simple linear regression, there was a negative association between food insecurity and HAZ in round 2 ($P < 0.001$) but not in round 1. After multiple linear regressions controlling for other potential influencers such as the child having a chronic health problem or a fever, the association between HAZ and food insecurity was still only present in round 2 ($P < 0.003$). This suggests that when a household's CSI score increases, a child's HAZ decreases, indicating that a child will more likely be stunted when living in a household facing severe food insecurity.

A regression analysis was carried out to assess the association between child nutritional status and living within an urban or rural area, the results of which are shown in Table 6. There was no association between WHZ or WAZ and the child's place of living in either of the two rounds. While there was a negative association between HAZ and living in either a rural ($P < 0.019$) or urban ($P < 0.001$) area in round 2, the association was stronger for urban children, suggesting that they are more likely to be stunted compared to their rural counterparts. A simple linear regression was carried out to assess the association between HAZ and the frequency of households carrying out each of the twelve suggested coping strategies, differentiated between rural and urban households as

**Table 3** Associations between child nutritional status and water, sanitation and hygiene access

Child nutritional status	Water, sanitation and hygiene	Round 1	P-value	Round 2	P-value
HAZ	Water access				
	Tap in house	Ref.		Ref.	
	Public standpipe	0.0551	0.872	1.4590	0.733
	River/dam	-0.0812	0.824	-5.8404	0.213
	Water tank	0.3815	0.336	2.1254	0.672
	Bathing access				
	Bath in dwelling	Ref.		Ref.	
	Shower in dwelling	0.4244	0.252	-0.6072	0.923
	Bucket wash	0.7224	0.091	-5.5161	0.280
	Toilet access				
	Flush toilet (inside)	Ref.		Ref.	
	Flush toilet (outside)	-1.1043*	0.000	-4.2112	0.536
WHZ	Pit latrine	-0.5140	0.130	-5.2058	0.195
	Water access				
	Tap in house	Ref.		Ref.	
	Public standpipe	0.4965	0.371	0.4771	0.175
	River/dam	0.5313	0.096	-0.0701	0.855
	Water tank	0.2336	0.321	-0.0547	0.894
	Bathing access				
	Bath in dwelling	Ref.		Ref.	
	Shower in dwelling	0.2327	0.864	0.4861	0.348
	Bucket wash	-0.5018	0.128	0.5917	0.158
	Toilet access				
	Flush toilet (inside)	Ref.		Ref.	
Flush toilet (outside)	0.0497	0.827	-0.0605	0.914	
WAZ	Pit latrine	0.7486*	0.029	0.1876	0.570
	Water access				
	Tap in house	Ref.		Ref.	
	Public standpipe	0.3021*	0.021	-0.0259	0.908
	River/dam	0.3137	0.072	-0.2895	0.237
	Water tank	0.3808*	0.031	-0.0352	0.893
	Bathing access				
	Bath in dwelling	Ref.		Ref.	
	Shower in dwelling	0.0129	0.965	0.6848*	0.037
	Bucket wash	0.2589	0.087	0.1378	0.603
	Toilet access				
	Flush toilet (inside)	Ref.		Ref.	
Flush toilet (outside)	-0.4001*	0.024	-0.2149	0.544	
Pit latrine	0.2223	0.366	-0.3742	0.074	

HAZ, height-for-age z-score; WAZ, weight-for-age z-scores; WHZ, weight-for-height z-scores.
*P-value significant <0.05.

Table 4 Household food insecurity status of children (%) with HAZ, WAZ and WHZ not considered normal

Child nutritional status	Level of household food insecurity				P-value
	None	Low	Moderate	High/severe	
Stunted/severely stunted					
Round 1	26.2	60.0	12.8	1.0	<0.001*
Round 2	25.3	42.9	20.8	11.0	
Overweight/obese					
Round 1	26.1	57.0	14.8	2.1	0.011*
Round 2	27.7	42.6	20.0	9.7	
Wasted/severely wasted					
Round 1	36.4	45.5	9.1	9.1	0.981
Round 2	37.5	43.8	6.3	12.5	
Underweight/severely underweight					
Round 1	21.4	50.0	28.6	-	-
Round 2	28.6	46.4	14.3	10.7	

HAZ, height-for-age z-score; WAZ, weight-for-age z-scores; WHZ, weight-for-height z-scores.
*P-value significant <0.05 for χ^2 analysis.

Table 5 Associations between child nutritional status and household food security†

Child nutritional status	Simple linear regression				Multiple linear regression			
	Round 1	<i>P</i> -value	Round 2	<i>P</i> -value	Round 1	<i>P</i> -value	Round 2	<i>P</i> -value
HAZ	0.0050	0.523	-0.2711*	0.000	0.0114	0.185	-0.2692*	0.004
WHZ	-0.1230	0.053	-0.0005	0.932	-0.0.194	0.352	0.0092	0.222
WAZ	-0.0029	0.426	-0.0041	0.257	-0.0057	0.161	-0.0007	0.888

HAZ, height-for-age z-score; WAZ, weight-for-age z-scores; WHZ, weight-for-height z-scores.

†Multiple linear regression controlled for how the child is fed, the mother's education, socioeconomic status, toilet, water and bathing access, whether the child has a chronic health condition, or has experienced a flu, vomiting or diarrhoea in the last 6 months. Dependent variable is the child nutritional status as a continuous variable. Food insecurity was measured using the continuous CSI score.

**P*-value significant <0.05.

Table 6 Associations between child nutritional status and household location†

Child nutritional status	Rural				Urban			
	Round 1	<i>P</i> -value	Round 2	<i>P</i> -value	Round 1	<i>P</i> -value	Round 2	<i>P</i> -value
HAZ	0.001	0.966	-0.187*	0.019	0.011	0.439	-0.468*	<0.001
WAZ	-0.004	0.170	-0.001	0.900	-0.003	0.752	-0.008	0.242
WHZ	-0.013	0.183	0.003	0.591	-0.132	0.165	0.005	0.655

HAZ, height-for-age z-score; WAZ, weight-for-age z-scores; WHZ, weight-for-height z-scores.

†Simple linear regression looked at the association between child nutritional status and residing in a rural or urban area. Dependent variable is child's anthropometric indices as a continuous variable.

**P*-value significant <0.05.

Table 7 Association between height-for-age z-score and household coping strategies†

Coping strategy	Severity score	Rural households				Urban households			
		Round 1	<i>P</i> -value	Round 2	<i>P</i> -value	Round 1	<i>P</i> -value	Round 2	<i>P</i> -value
Less expensive food	2	-0.177	0.272	-2.474	0.222	0.082	0.703	-6.798	0.067
Borrow food	3	0.203	0.396	-4.128*	0.001	-0.314	0.007	-2.788	0.124
Buy on credit	2	-0.164	0.480	-5.01*	<0.001	-0.010	0.958	-3.768	0.067
Hunt/gather wild food	3	0.135	0.292	-6.61*	<0.001	0.231	0.206	-5.553*	0.021
Consume seed stock	4	-0.104	0.558	-1.353	0.515	0.261	0.773	-9.195*	0.003
Send children elsewhere	4	0.178	0.622	-0.778	0.719	0.748	0.277	-26.85*	<0.001
Send someone to beg	3	-0.235	0.086	0.292	0.897	0.509	0.043	-23.594*	<0.001
Limit portion sizes	3	-0.177	0.272	-2.474	0.222	0.082	0.703	-6.798	0.067
Restrict food for children	4	0.011	0.921	-3.024	0.169	0.327	0.209	-11.313*	0.002
Restrict food for workers	3	0.044	0.685	1.384	0.555	0.114	0.197	-12.127*	0.001
Reduce meal numbers	3	-0.133	0.216	1.094	0.641	0.035	0.651	-13.110*	0.001
Skip eating all day	4	-0.111	0.656	1.302	0.764	0.169	0.522	-	

†Simple linear regression looked at the association between child stunting and coping strategies carried out by the household. Dependent variable is child's anthropometric measure as a continuous variable. The exposure variable is the frequency in which a household reported having carried out a coping strategy.

**P*-value significant <0.05. Data from round 1 has been weighted based on the ward sample sizes in round 2.

shown in Table 7. The researchers decided only to assess HAZ due to a lack of evidence supporting an association between WHZ and WAZ and household food insecurity. As expected, there were no associations between stunting and coping strategies in round 1. For rural households, there was a negative association between HAZ and borrowing food ($P < 0.001$), buying food on credit ($P < 0.001$) and hunting or gathering wild food ($P < 0.001$) only. There was also a negative association between hunting and HAZ for urban households ($P < 0.021$) but not for buying on credit or borrowing food. Urban households, however,

had a negative association between HAZ and an additional six coping strategies, including sending a household member to beg ($P < 0.001$), sending a child elsewhere to eat ($P < 0.001$) and reducing the number of meals eaten in a day ($P < 0.001$). Table 7 shows the severity score attributed to each coping strategy of the community within the study area⁽⁴⁰⁾. The strongest associations were found between stunting and the most severe coping strategies, which indicates that stunted children are more likely to live in households facing severe food shortages. Considering the coping strategies associated with stunting in urban



and rural households, it appears that urban households were facing more severe food shortages and carrying out extreme coping strategies, which were having a higher impact on child stunting, than rural households.

Discussion

The results indicated a significant change in child nutritional status between the two time-points – during and after the drought. The increase in the number of children being underweight was relatively small, as it was for wasting. The most significant increases were found for all forms of stunting from 22.6 to 39.9%, and obesity from 12.3 to 22.0%. The prevalence of stunting reported by this study is alarmingly high, particularly after the drought in 2017. A previous study conducted in iLembe also found the prevalence to be higher than the national average in 2014⁽³⁶⁾. It is also important to note that the population sampled for this study were poorest households in the district. National surveys have highlighted the effect such a sample can have on the reported results; for example, the South African Demographic Health Survey in 2016⁽⁴⁶⁾ found that 27% of the population aged <5 years were stunted. This increased to 36% when only the poorest of the population were considered. The survey also found that the prevalence rates varied across the provinces, with KwaZulu-Natal having 29%. This rate included all the children in the province, and it could have been much higher, similar to the rate found in this study, should only the poorest be considered. The increase in stunting between the two rounds is almost double, and while this sharp increase could be due to a measurement error, Remans *et al.*⁽⁴⁷⁾ suggest that stunting may be sensitive to short changes in time due to the multitude of key drivers and factors influencing nutritional status. Although the study by Remans *et al.*⁽⁴⁷⁾ focused on improvements in stunting, a study conducted in Ethiopia found a 10% increase in the prevalence of stunting within 6 months due to seasonal fluctuations⁽⁴⁸⁾. The time period assessed by the Ethiopian study was shorter than that in iLembe and followed similar methods to measure child growth, yet found a significant increase. In order to fully assess changes in child stunting in iLembe, continuous measurement and a longitudinal analysis is required taking into consideration all relevant risk factors to determine the underlying causes.

The high levels of overweight or obesity, on the other hand, could indicate a 'nutrition transition', which is often characterised by the abandonment of traditional plant-based diets to those high in energy, fats and sugars⁽⁴⁹⁾. South Africa is believed to be at the later stage of a nutritional transition with lower levels of physical activity in the population and a rise in the number of diet-related diseases⁽⁵⁰⁾. However, there are high rates of both stunting and obesity, which could also indicate the experience of

'hidden hunger'. This could be attributed to a micronutrient deficiency leading to stunting, but can also co-exist with adequate or overconsumption of foods high in fat or carbohydrates and, therefore, with obesity⁽⁵¹⁾. According to Oxfam⁽⁵²⁾, poor households in South Africa have 'bad access to good food and good access to bad food' (p. 25) and are buying cheaper, less-nutritious food in order to stretch their money further⁽⁵²⁾. One of the negative impacts of the drought was an increase in the cost of food. While there are a number of factors influencing food prices and inflation, the reduction in agriculture and exports caused by the drought pushed food prices up⁽⁵³⁾. These effects often accumulate over time and could prolong⁽⁵⁴⁾, with costs tending to decrease only when the situation is back to normal. This explains why the child nutritional status was worse after the drought, rather than during the drought, particularly because many South Africans, both rural and urban, are reliant on store-bought food^(55–57).

Research indicates that improved WASH access and practices could lead to positive nutritional and health outcomes, such as lower prevalence of stunting^(58,59), diarrhoea incidence and child mortality⁽⁶⁰⁾. Climate change has the potential to hinder such improvements by limiting access to safe water and increasing the risk of waterborne illnesses⁽⁶¹⁾. Based on the results of this study, it appears that those who mainly use pit latrines in comparison to flush toilets are not affected during a drought. Pit latrines are considered to be climate-resilient with better adaptive capacity during water shortages⁽⁶²⁾. Due to water scarcity, households with flush toilets may have adapted their sanitation practices by reducing flushing or hand washing. It also appears that while sanitation was affected by the drought, water access was not. Although water supply was sometimes turned off, the majority of households still relied on municipal water and were able to access safe, clean water. Based on our findings, a drought could lead to poorer nutritional status through changes in sanitation and hygiene practices, and there is a need to ensure households do not neglect good hygiene when water supply is limited.

We hypothesised an association between increasing household food insecurity and child nutritional status. Despite an increase in underweight, wasted and overweight children living in households with a high or severe food insecurity, no evidence was found to suggest any association. There was, however, a negative association between child's HAZ and a household's CSI score, indicating that stunted children are more likely to live in food-insecure households. Humphries *et al.*⁽¹⁰⁾ described three different patterns of food insecurity, namely a single acute episode, intermittent or chronic. Prolonged and delayed effects of the drought pushed some households deeper into food insecurity – potentially from single or intermittent episodes to chronic. Stunting is an outcome of long-term limited food intake, a presentation of chronic undernutrition. Prior to the drought in 2014, the prevalence rate in



iLembe was 21.1%⁽³⁶⁾, only 1.5% lower than the rate reported in 2016. During the drought, the prevalence of stunting increased by a small amount, but the rate significantly increased to 39.9% only after the drought had ended when food insecurity was more severe for some participants. This highlights the strong relationship between chronic food insecurity and chronic undernutrition as discussed by Humphries *et al.*⁽¹⁰⁾, and may explain why the association found was after the drought and only for stunting. Alternatively, Hendriks *et al.*⁽⁶³⁾ explained how different food insecurity measures can provide different results. For example, the CSI shows the frequency and severity of food deprivation, but does not consider the quality of a diet⁽⁶³⁾. A 24-h food recall, on the other hand, records food intake, but does not allow for how long a consumption pattern lasts. Had a 24-h food recall been used, different associations may have been apparent, such as wasting that is often related to a sudden food limitation rather than a long-term deprivation⁽⁶⁴⁾.

While the study found an association between stunting and food insecurity in both rural and urban households after the drought, the association was stronger for those in urban areas. This suggests that children in urban areas were more likely to be chronically malnourished compared to their rural counterparts. There was also a difference in the association between child stunting and the frequency by which households carried out certain coping strategies depending on their location. For example, rural households that frequently borrowed food, bought it on credit or hunted for food were more likely to have a stunted child, whereas in urban households, not only did the strategies associated with stunting differ, but also the number of associations was much higher. The strongest association was found for sending children elsewhere to eat, a strategy considered as a last resort by iLembe residents. Restricting food to others so children could eat, also considered as a last resort, also had a strong association with stunting in urban households. Previously, poverty and food insecurity were thought to be mainly situated within rural areas, with urban households thought to have better social and wealth indicators⁽⁶⁾. However, as a result of urbanisation, migration and an increase in the number of urban slums, the urban advantage has since diminished⁽⁶⁾. It has been shown that households within the African urban context purchase the majority of their food, speaking to the problem of food access rather than availability⁽⁵⁷⁾. After the drought, within the same study area, there was an increase in households that relied on a supermarket compared with locally sourced items from a farm or their own garden (unpublished results). At the same time, the cost of food had increased, and rural households were less likely to be food-insecure compared to their urban counterparts (unpublished results). Rural households often rely on coping strategies that make use of the natural environment, subsequently cushioning the effects of food or income shocks⁽⁶⁵⁾. Populations in urban areas often do not have

such resources, as evident in this study in terms of the coping strategies they use, mainly restrictive or rationing. Battersby and Haysom⁽⁶⁶⁾ argued that when assessing urban food security, it is important to consider a number of household-scale challenges such as the high costs of energy and water. They explain that these costs increase the cost of food preparation of traditional foods that take a long time to cook, and urban households will therefore consume more processed and energy-dense foods that take less time to cook. Energy-dense foods with low nutritional value are often more accessible and available, with a change in diet to healthier foods expected to cause a significant increase in food costs⁽⁶⁷⁾. In addition, supermarkets in South Africa are more situated in wealthy regions, creating further access limitations and additional transport costs to the poorest urban households^(68,69). These factors may contribute to the high rates of food insecurity, but also the link between stunting and food insecurity in urban households with children potentially consuming foods high in energy but poor nutritional value. That said, there are still strong associations between stunting and strategies that relied on natural resources in urban households. It appeared that urban households were carrying out unfamiliar coping mechanisms, which highlights the magnitude of the problem they were faced with. Despite the problems of child stunting, lower incomes⁽⁷⁰⁾ and higher food prices^(65,71), it appeared that rural households were better able to offset the effects of the drought. Policymakers should, therefore, consider the different ways in which households are affected – damaged or lower crop yields in rural households, and higher food prices for urban households – and consider policies or interventions that will provide the highest impact for both food and nutrition security.

Recommendations

During a drought or other climatic event, short-term interventions such as food aid would be beneficial to minimise the impact not only on household food insecurity but also on child nutritional status. Long-term interventions to improve food insecurity may also have a high impact and could include community food gardens or seed programmes that encourage people to grow their own food. However, the location and appropriateness should be considered prior to implementation, and households should be educated on food storage and adaptive practices to limit the impact of climate and seasonality. In addition to the child support grant, policymakers could consider food vouchers for specific products targeted towards young children, for example, vouchers for baby formula or fresh fruit and vegetables. Implementing specific product vouchers would ensure that a child or household would have access to food, but also might reduce the possibility of the vouchers being used on other non-food products.



Future research in South Africa needs to assess the contributing factors to child stunting and overweight, including dietary diversity, types of food eaten, individual activity levels and hidden hunger. In addition, there is a need to conduct a longitudinal analysis to further assess the relationship between food security and child nutritional status while considering the impact of climatic or environmental events. The tools used to measure food insecurity should also be carefully considered and should include a variety of indicators measuring food availability, access and utilisation.

Study limitations

The study had a number of limitations, including the sampling strategy that varied between the two rounds of data collection in terms of the number of households selected from each ward. To rectify this, the results from round 1 were weighted to match the sample sizes from round 2. Secondly, anthropometrics used were prone to measurement bias and human error, potentially creating miscalculations on nutritional status. The tools used were standardised and the data collectors were given rigorous training. Each measurement was repeated to improve accuracy. It is also acknowledged by the researchers that biomedical assessments coupled with anthropometric measures could more accurately determine nutritional status. However, child growth is internationally recognised as an important indicator of nutritional status and health^(72,73) and, therefore, the results provided are still an useful indicator of the problem being faced in the district of iLembe. Thirdly, the study design used repeated cross-sectional surveys, which only provided a snapshot of the situation at the time of data collection. However, the information generated allowed for a comparison during and after the drought and could act as the starting point for a longitudinal analysis. Finally, food insecurity was measured at household level rather than child level based on the available data. The impact of food insecurity on people may vary due to their individual characteristics. Such characteristics were taken into consideration during multiple regression analyses, and the results generated still provide a good insight into the association between the two variables.

Conclusions

Child nutritional status significantly changed between the two rounds for all forms of malnutrition, including overweight and obesity, with the most significant increases being for stunting and obesity. The high levels of stunting and obesity could be attributed to hidden hunger made worse by limited food access following an increase in food prices due to the drought. The proportion of undernourished or overweight children living in high or severe

food-insecure households also increased; however, the results only indicated an association between food insecurity and stunting after the drought. The experience of food insecurity for some households was more severe after the drought, which suggests that as food insecurity progressed from intermittent to chronic, the association with child stunting became stronger. The results also suggest that urban households were experiencing more severe food shortages due to the drought, and as a result, urban children were more likely to be stunted than their rural counterparts. Interventions to improve household food security may be useful to reduce poor nutritional status in young children. Policymakers should also consider that rural and urban households are coping differently and should implement interventions that are location-specific to achieve the highest impact. Although the study cannot conclude that the drought was the cause of poor nutritional status, based on a comparative analysis, drought did appear to be a contributing factor by impacting household food security. Future research should carry out longitudinal studies to further assess the relationship between household food insecurity and child nutritional status, taking into consideration climatic and environmental events that may occur.

Acknowledgements

Acknowledgements: The researchers would like to thank the participants of this study. We would also like to thank the iLembe district municipality and the respective sub-district municipalities for allowing the research to take place. *Financial support:* This research received no specific grant from any funding agency, commercial or not-for-profit sectors. *Conflict of interest:* None. *Authorship:* R.E.D., U.B. and M.M. equally conceptualised the study. Data collection and primary analysis were conducted by R.E.D. with contribution from M.M. and U.B. The article was written by R.E.D. All co-authors provided comments and critical feedback on the drafts, and approved the final manuscript for submission. *Ethics of human subject participation:* This study was conducted according to the guidelines laid down in the Declaration of Helsinki, and all procedures involving study participants were approved by the University of KwaZulu-Natal Humanities and Social Sciences Research Committee. Written informed consent was obtained from all subjects.

References

1. Food and Agriculture Organization, International Fund for Agricultural Development, United Nations Children's Fund *et al.* (2017) *The State of Food Security and Nutrition in the World 2017. Building Resilience for Peace and Food Security*. Rome: FAO.
2. UNICEF (United Nations Children's Fund), World Health Organization, International Bank for Reconstruction *et al.*



- (2018) *Levels and Trends in Child Malnutrition: Key Findings of the 2018 Edition of the Joint Child Malnutrition Estimates*. Geneva: WHO.
3. Black RE, Allen LH, Bhutta ZA *et al.* (2008) Maternal and child undernutrition: global and regional exposures and health consequences. *Lancet* **371**, 243–60.
 4. Mutisya M, Kandala N, Ngware MW *et al.* (2015) Household food (in)security and nutrition status of urban poor children aged 6 to 23 months in Kenya. *BMC Public Health* **15**, 1052.
 5. Engle PL, Menon P & Haddad L (1999) Care and nutrition: concepts and measurement. *World Dev* **27**, 1309–1337.
 6. Fotso JC, Madise N, Baschieri A *et al.* (2012) Child growth in urban deprived settings: does household poverty status matter? At which stage of child development? *Health Place* **2**, 375–384.
 7. Casey PH, Simpson PM, Gossett JM *et al.* (2006) The association of child and household food insecurity with child overweight status. *Pediatrics* **118**, 1406–1413.
 8. Martorell R (1999) The nature of child malnutrition and its long-term implications. *Food Nutr Bull* **20**, 288–292.
 9. Mulu E & Mengistie B (2017) Household food insecurity and its association with nutritional status of under five children in Sekela District Western Ethiopia: a comparative cross-sectional study. *BMC Nutr* **3**, 35.
 10. Humphries DL, Dearden KA, Crookston BT *et al.* (2015) Cross-sectional and longitudinal associations between household food insecurity and child anthropometry at ages 5 and 8 years in Ethiopia, India, Peru and Vietnam. *J Nutr* **145**, 1924–1933.
 11. Saaka M & Osman SM (2013) Does household food insecurity affect the nutritional status of preschool children aged 6–36 months? *Int J Popul Res* **2013**, 304169.
 12. Osei A, Pandey P, Spiro D *et al.* (2010) Household food insecurity and nutritional status of children aged 6 to 23 months in Kailali District of Nepal. *Food Nutr Bull* **31**, 483–494.
 13. Ajao KO, Ojofeitim EO, Adebayo AA *et al.* (2010) Influence of family size, household food security status, and child care practices on the nutritional status of under-five children in Ile-Ife, Nigeria. *Afr J Reprod Health* **14**, 123–132.
 14. Devereux S (2007) The impact of droughts and floods on food security and policy options to alleviate negative effects. *Agric Econ* **37**, 47–58.
 15. Wantanabe T, Cullmann J, Pathak CS *et al.* (2018) Management of climatic extremes with focus on floods and droughts in agriculture. *Irrig Drain* **67**, 29–42.
 16. Call MA, Gray C, Yunus M *et al.* (2017) Disruption, not displacement: environmental variability and temporary migration in Bangladesh. *Glob Environ Change* **46**, 157–165.
 17. Tirado MC, Hunnes D, Cohen MJ *et al.* (2015) Climate change and nutrition in Africa. *J Hunger Environ Nutr* **10**, 22–46.
 18. Hall C, Dawson TP, Macdiarmid JI *et al.* (2017) The impact of population growth and climate change on food security in Africa: looking ahead to 2050. *Int J Agr Sustain* **15**, 124–135.
 19. Alderman H (2010) Safety nets can help address the risks to nutrition from increasing climate variability. *J Nutr* **140**, 148S–152S.
 20. Woldehanna T (2010) Do pre-natal and post-natal economic shocks have a long-lasting effect on height of 5-year-old children? Evidence from 20 sentinel sites of rural and urban Ethiopia. Working Paper No. 60. Oxford, Young Lives, Department of International Development.
 21. Chotard S, Mason JB, Oliphant NP *et al.* (2010) Fluctuations in wasting in vulnerable child populations in the Greater Horn of Africa. *Food Nutr Bull* **31**, S219–233.
 22. Rodriguez-Llanes JM, Ranjan-Dash S, Degomme O *et al.* (2011) Child malnutrition and recurrent flooding in rural eastern India: a community-based survey. *BMJ Open* **1**, e000109.
 23. World Bank (2018) *World Bank Country and Lending Groups*. <https://datahelpdesk.worldbank.org/knowledgebase/articles/906519-world-bank-country-and-lending-groups> (accessed September 2018).
 24. National Department of Health (NDoH), Statistics South Africa (Stats SA), South African Medical Research Council (SAMRC) *et al.* (2017) *South African Demographic and Health Survey 2016: Key Indicators*. Pretoria, South Africa and Rockville, Maryland, USA: NDoH, Stats SA SAMRC and ICF.
 25. Southern Africa Labour and Development Research Unit (2018) National Income Dynamics Study (NIDS) Wave 1, 2008 [dataset]. Version 7.0.0. Pretoria, SA Presidency, University of Cape Town, Southern Africa Labour and Development Research Unit [implementer].
 26. South Africa Reserve Bank (2017) *Monetary Policy Review, October 2017*. Pretoria: South African Reserve Bank.
 27. Bureau for Food and Agricultural Policy (2016). *Policy Brief on the 2015/2016 Drought*. http://www.bfap.co.za/documents/research%20reports/BFAP_Drought%20Policy%20Brief_5%20February%202016.pdf (accessed September 2018).
 28. Dinkelmann T (2015) Long run health repercussions of drought shocks: evidence from South African Homelands. *Econ J* **127**, 1906–1939.
 29. Wright CY, Garland RM, Norval M *et al.* (2014) Human health impacts in a changing South African climate. *S Afr Med J* **104**, 579–582.
 30. Stanke C, Kerac K, Prudhomme C *et al.* (2013) Health effects of drought: a systematic review of the evidence. *PLoS Curr* **5**, doi: 10.1371/currents.dis.7a2cee9e980f91ad7697b570bcc4b004.
 31. Remler DK & van Ryzin GG (2015) Chapter 15: Natural and quasi experiments. In *Research Methods in Practice*, 2nd ed., pp. 467–500 [DK Remler & GG van Ryzin, editors]. New York: Sage Publishing.
 32. Barley SC & Meeuwig JJ (2017) The power and the pitfalls of large-scale, unreplicated natural experiments. *Ecosystems* **20**, 331–339.
 33. Statistics South Africa (2011) *Statistics by place: census 2011*. http://www.statssa.gov.za/?page_id=964 (accessed May 2019).
 34. Enterprise iLembe (2012) *iLembe District Municipality: Quarterly Economic Indicators and Intelligence Report, Fourth Quarter 2012, October – December 2012*. <http://www.enterpriseilembe.org.za/wp-content/uploads/iLembe%20Economic%20Indicators/iLembe%20Economic%20Indicators%20Report%20Q4%202012.pdf> (accessed September 2018).
 35. Statistics South Africa (2012) *Census 2011 Municipal Report – KwaZulu-Natal*. http://www.statssa.gov.za/census/census_2011/census_products/KZN_Municipal_Report.pdf (accessed September 2018).
 36. Dukhi N, Sartorius B & Taylor M (2017) Stunting in children (0–59 months): what is the current trend in South Africa? *Early Child Dev Care* **187**, 1874–1886.
 37. Van Loon AF (2015) Hydrological drought explained. *WIREs Water* **2**, 359–392.
 38. Daily News Reported (2016) *KZN drought causes extended water restrictions*. <https://www.iol.co.za/news/south-africa/kwazulu-natal/kzn-drought-causes-extended-water-restrictions-2047568> (accessed May 2019).
 39. World Health Organisation (2018) *Steps in applying probability proportional to size (PPS) and calculating basic probability weights*. http://www.who.int/tb/advisory_bodies/impact_measurement_taskforce/meetings/prevalence_survey/pws_probability_prop_size_bierrenbach.pdf (accessed October 2018).
 40. Drysdale R, Moshabela M & Bob U (2019) Adapting the coping strategies index to measure food insecurity in the rural district of iLembe, South Africa. *Food Cult Soc* **22**, 95–110.



41. World Health Organization (2009) *WHO child growth standards and the identification of severe acute malnutrition in infants and children*. A joint statement by the World Health Organization and the United Nations Children's Fund. http://apps.who.int/iris/bitstream/handle/10665/44129/9789241598163_eng.pdf?ua=1 (accessed September 2018).
42. Vyas S & Kumaranayake L (2006) Constructing socio-economic status indices: how to use principal component analysis. *Health Policy Plan* **6**, 459–468.
43. Lambert PS (2001) Individuals in household panel surveys: dealing with person-group clustering in individual level statistical models using BHPS data. <https://www.iser.essex.ac.uk/files/conferences/bhps/2001/docs/pdf/papers/lambert.pdf> (accessed October 2018).
44. South Africa Social Support Agency (2016) You and your grants: 2016/2017. <http://www.sassa.gov.za/index.php/knowledge-centre/grant-booklets?download=523%3Ayou-and-your-grants-2016-2017> (accessed November 2018).
45. South Africa Social Support Agency (2018) You and your grants: 2018/2019. <http://www.sassa.gov.za/index.php/knowledge-centre/category/2-publications?download=763:you-and-your-grants-2018-2019> (accessed November 2018).
46. National Department of Health, Statistics South Africa, South African Medical Research Council *et al.* (2019) *South Africa Demographic Health Survey 2016*. Pretoria: Department of Health, Republic of South Africa.
47. Remans R, Pronyk PM, Fanzo JC *et al.* (2011) Multisector intervention to accelerate reductions in child stunting: an observational study from 9 sub-Saharan African countries. *Am J Clin Nutr* **94**, 1632–1642.
48. Roba KT, O'Connor TP, Belachew T *et al.* (2016) Variations between post- and pre-harvest seasons in stunting, wasting, and Infant and Young Feeding (IYCF) practices among children 6–23 months of age in lowland and midland agro-ecological zones of rural Ethiopia. *Pan Africa Medical Journal* **24**, 163.
49. Popkin BM (2003) The nutrition transition in the developing world. *Dev Policy Rev* **21**, 581–597.
50. Crush J, Frayne B & McLachlan M (2011) *Rapid Urbanisation and the Nutrition Transition in Southern African*. Cape Town: African Food Security Urban Network.
51. Von Grebmer K, Saltzman A, Birol E *et al.* (2014) *2014 Global Hunger Index: The Challenge of Hidden Hunger*. Washington, D.C. & Dublin, Welthungerhilfe: International Food Policy Research Institute, & Concern Worldwide.
52. Oxfam (2014) *Hidden Hunger in South Africa: the Faces of Hunger and Malnutrition in a Food-Secure Nation*. Oxford: Oxfam GB.
53. South African Reserve Bank (2017) *Promoting the Economic Well-Being of South Africa: Annual Report 2016/2017*. Pretoria: South African Reserve Bank.
54. Whillhite DA (2000) *Chapter 1: Drought as a Natural Hazard: Concepts and Definitions in Drought: A Global Assessment*. London: Routledge.
55. Altman M, Hart TGB & Jacobs PT (2009) Household food security status in South Africa. *Agrekon* **48**, 354–361.
56. Aliber M (2009) Exploring Statistics South Africa's national household surveys as sources of information about household level food security. *Agrekon* **48**, 384–409.
57. Crush J & Frayne B (2014) Feeding African cities: the growing challenge of urban food insecurity. In *Africa's Urban Revolution* [S Parnell & E Pieterse, editors]. London & New York: Zed Books.
58. Rah JH, Cronin AA, Badgaiyan B *et al.* (2015) Household sanitation and personal hygiene practices are associated with child stunting in rural India: a cross-sectional analysis of surveys. *BMJ Open* **5**, e005180.
59. Dearden KA, Schott W, Crookston BT *et al.* (2017) Children with access to improved sanitation but not improved water are at lower risk of stunting compared to children without access: a cohort study in Ethiopia, Peru, and Vietnam. *BMC Public Health* **17**, 110.
60. Heady D & Palloni G (2019) Water, sanitation, and child health: evidence from subnational panel data in 59 countries. *Demography* **56**, 729–757.
61. Bahru BA, Bosch C, Birner R *et al.* (2019) Drought and child undernutrition in Ethiopia: a longitudinal path analysis. *PLoS One* **14**, e0217821.
62. Howard G & Bartram J (2010) *Vision 2030: The Resilience of Water Supply and Sanitation in the Face of Climate Change: Technical Report*. Geneva: World Health Organization.
63. Hendriks SL, Van der Merwe C, Ngidi MS *et al.* (2016) What are we measuring? Comparison of household food insecurity indicators in the Eastern Cape Province, South Africa. *Ecol Food Nutr* **55**, 141–162.
64. Battersby J & Haysom G (2019) Linking urban food security, urban food system, poverty, and urbanisation. In *Urban Food Systems Governance and Poverty in African Cities*, pp. 56–67 [J Battersby & V Watson, editors]. London: Routledge.
65. Temple NJ & Steyn NP (2011) The cost of a healthy diet: a South African perspective. *Nutrition* **27**, 505–508.
66. Peyton S, Moseley W & Battersby J (2015) Implications of supermarket expansion on urban food security in Cape Town, South Africa. *Afr Geogr Rev* **31**, 36–54.
67. Battersby J & McLachlan M (2013) Urban food security: a neglected public health challenge. *S Afri Med J* **103**, 716–717.
68. Motbainor A, Worku A & Kumie A (2015) Stunting is associated with food diversity while wasting with food insecurity among under five children in east and west Gojjam zones of Amhara region, Ethiopia. *PLoS One* **10**, e0133542.
69. Garrett JL & Ruel MT (1999) Are determinants of rural and urban food security and nutritional status different? Some insights from Mozambique. *World Dev* **27**, 1955–1975.
70. Westaway A (2010) Rural poverty in South Africa: legacy of apartheid or consequence of contemporary segregationism? Proceedings of Overcoming inequality and structural poverty in South Africa: towards inclusive growth and development. Johannesburg, 20–22 September 2010. <http://www.plaas.org.za/sites/default/files/publications-pdf/Westaway.pdf> (accessed November 2018).
71. Pollard CM, Landrigan TJ, Ellies PL *et al.* (2014) Geographic factors as determinants of food security: a Western Australia food pricing and quality study. *Asia Pac J Clin Nutr* **23**, 703–713.
72. Gorstein J & Akfe J (1988) The use of anthropometry to assess nutritional status. *World Health Stat Q* **41**, 48–58.
73. World Health Organization. (2010) *Nutrition Landscape Information Systems (NLIS) Country Profile Indicators: Interpretation Guide*. Geneva: WHO. https://www.who.int/nutrition/nlis_interpretation_guide.pdf (accessed March 2019).



Trias Mahmudiono

<https://www.webofscience.com/wos/author/rid/I-4020-2019>

Web of Science ResearcherID: I-4020-2019

ORCID: 0000-0002-3128-2173

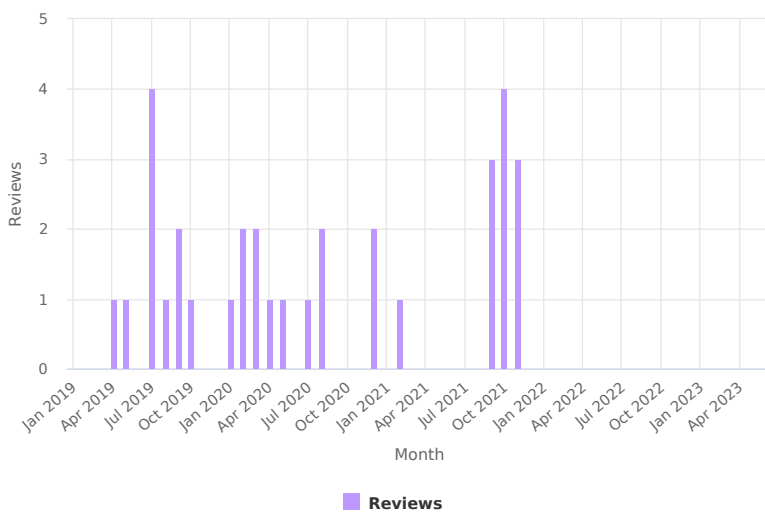
Current affiliation:

- Universitas Airlangga from 2003 until present

 Academy graduate & mentor

Verified reviews

Review Summary



Reviewer Summary

For manuscripts reviewed from date range December 2018 - June 2023

(6) Open Access Macedonian Journal of Med...

(5) BMC Public Health

(4) Nutrition Journal

(3) Asia Pacific Journal of Public Health

(3) Public Health Nutrition

(2) Journal of Health, Population and Nutriti...

(2) The American Journal of Clinical Nutrition

(1) Revista de Saude Publica

(1) Malawi Medical Journal

(1) Frontiers in Public Health

(1) Malaysian Journal of Nutrition

(1) Journal of Nutrition and Metabolism

(1) Nutrition and Metabolic Insights

(1) Journal of Nutritional Science

(1) Media Gizi Indonesia

33 REVIEWS OF 28 MANUSCRIPTS

For manuscripts published from date range December 2018 - June 2023

Naturally Acquired Lactic Acid Bacteria from Fermented Cassava Improves Nutrient and Anti-dysbiosis Activity of Soy Tempeh

Reviewed: Nov 2021 for Open Access Macedonian Journal of Medical Sciences

STUNTING IS THE DOMINANT FACTOR ASSOCIATED WITH IRON DEFICIENCY IN ELEMENTARY SCHOOL CHILDREN

Reviewed: Nov 2021 for Open Access Macedonian Journal of Medical Sciences

Double Burden of Malnutrition as a Risk Factor for Overweight and Obesity

Reviewed: Nov 2021 for Revista de Saude Publica

Household food security during the COVID-19 pandemic in urban and semi-urban areas in Indonesia

2 rounds from Oct 2021 to Oct 2021 for Journal of Health, Population and Nutrition

Socio-demographic characteristics of children and young adults with varied asthma control- does it make a difference?

Reviewed: Oct 2021 for Malawi Medical Journal

The Primary Prevention Intervention Of Stunting In Pasaman Barat Regency West Sumatera Indonesia 2019

Reviewed: Oct 2021 for Open Access Macedonian Journal of Medical Sciences

Body Fat Composition Related to Fatty Snack Habit Consumption of Office Workers in Urban Area

Reviewed: Sep 2021 for Open Access Macedonian Journal of Medical Sciences

An Analysis Of Baby Stunting Prevalence Causing Factors In The Pandemy Era Covid-19

Reviewed: Sep 2021 for Open Access Macedonian Journal of Medical Sciences

The Improving the performance of children meal using meal report at Kindergarten School in Indonesia

Reviewed: Sep 2021 for Open Access Macedonian Journal of Medical Sciences

Association Between Food Choices Motivators, Physical Activity in Body Image (Dis)satisfaction in Portuguese Adolescents

Reviewed: Feb 2021 for Frontiers in Public Health

Zikabra: A Networking Initiative for International Cooperation in Health

Reviewed: Dec 2020 for BMC Public Health

An initiative of cooperation in Zika virus research: the experience of the ZIKABRA study in Brazil

Reviewed: Dec 2020 for BMC Public Health

Energy, Protein, and Vitamin C Intakes Are Associated to Stunting Among Preschool Children in Central Jakarta, Indonesia: a Case-control Study

Reviewed: Aug 2020 for Malaysian Journal of Nutrition

Prevalence Stunting Among Preschool Children (1-5Years) in Bushenyi District Southwestern Uganda- a Health Center Based Study

Reviewed: Aug 2020 for Journal of Nutrition and Metabolism

Geographical, Socioeconomical and Behavioral Factors Related to Obesity Among Adults in the Republic of Palau Based on the WHO STEPwise Approach to Surveillance 2011–2013

Reviewed: Jul 2020 for Asia Pacific Journal of Public Health

Social circumstances and cultural beliefs influence maternal nutrition, breastfeeding and child feeding practices in South Africa

2 rounds from Mar 2020 to May 2020 for Nutrition Journal

Intra-individual Double Burden of Overweight Or Obesity and Micronutrient Deficiencies Or Anemia Among Women of Reproductive Age in 17 Population-based Surveys

2 rounds from Jan 2020 to Apr 2020 for The American Journal of Clinical Nutrition

Scaled-Up Nutrition Education on Pulse-Cereal Complementary Food in Ethiopia: A Cluster-Randomized Trial

Reviewed: Mar 2020 for BMC Public Health

Overfed-Undernourished: The Nutritional Dual Burden of Malnutrition

Reviewed: Feb 2020 for Nutrition and Metabolic Insights

The Effectiveness of Nutritional Educational Comics on Increasing Haemoglobin Levels in Anaemic Adolescent Girls

Reviewed: Feb 2020 for Public Health Nutrition

Nutrient Adequacy of Japanese Schoolchildren By Household Income: Comparison Between Days with and Without School Lunch

Reviewed: Oct 2019 for Asia Pacific Journal of Public Health

Video Animasi Dan Pengetahuan Gizi Remaja

Reviewed: Sep 2019 for Media Gizi Indonesia

The association of dietary patterns and adherence to WHO healthy diet with metabolic syndrome in children and adolescents: Tehran lipid and glucose study

2 rounds from Jul 2019 to Sep 2019 for BMC Public Health

Nutrient adequacy of Japanese schoolchildren on days with and without a school lunch by household income

Reviewed: Aug 2019 for Asia Pacific Journal of Public Health

Coping through a drought: the association between child nutritional status and household food insecurity in the district of iLembe, South Africa

Reviewed: Jul 2019 for Public Health Nutrition

Parent–child cooking meal together may alleviate parental concerns about the diets of their toddlers and preschoolers: a cross-sectional analysis in Japan

2 rounds from May 2019 to Jul 2019 for Nutrition Journal

The double burden of overnutrition and undernutrition in mother-child dyads in Kenya: demographic and health survey data, 2014

Reviewed: Jul 2019 for Journal of Nutritional Science

Coping Through a Drought: The Association Between Child Nutrition and Household Food Insecurity in the District of iLembe, South Africa

Reviewed: Apr 2019 for Public Health Nutrition
