



Source details

Open Access Macedonian Journal of Medical Sciences

Formerly known as: Macedonian Journal of Medical Sciences

Scopus coverage years: from 2014 to Present

Publisher: Scientific Foundation SPIROSKI

E-ISSN: 1857-9655

Subject area: Medicine: General Medicine

Source type: Journal

CiteScore 2021

1.3



SJR 2021

0.257



SNIP 2021

0.603



[View all documents >](#)

[Set document alert](#)

[Save to source list](#)

[CiteScore](#) [CiteScore rank & trend](#) [Scopus content coverage](#)

i Improved CiteScore methodology



CiteScore 2021 counts the citations received in 2018-2021 to articles, reviews, conference papers, book chapters and data papers published in 2018-2021, and divides this by the number of publications published in 2018-2021. [Learn more >](#)

CiteScore 2021 ▼

$$1.3 = \frac{4,420 \text{ Citations 2018 - 2021}}{3,303 \text{ Documents 2018 - 2021}}$$

Calculated on 05 May, 2022

CiteScoreTracker 2022 ⓘ

$$1.2 = \frac{3,672 \text{ Citations to date}}{3,139 \text{ Documents to date}}$$

Last updated on 05 September, 2022 • Updated monthly

CiteScore rank 2021 ⓘ

Category	Rank	Percentile
Medicine		
General Medicine	#416/826	49th

[View CiteScore methodology >](#) [CiteScore FAQ >](#) [Add CiteScore to your site](#)

About Scopus

- [What is Scopus](#)
- [Content coverage](#)
- [Scopus blog](#)
- [Scopus API](#)
- [Privacy matters](#)

Language

- [日本語版を表示する](#)
- [查看简体中文版本](#)
- [查看繁體中文版本](#)
- [Просмотр версии на русском языке](#)

Customer Service

- [Help](#)
- [Tutorials](#)
- [Contact us](#)

ELSEVIER

[Terms and conditions](#) ↗ [Privacy policy](#) ↗

Copyright © [Elsevier B.V](#) ↗. All rights reserved. Scopus® is a registered trademark of Elsevier B.V.

We use cookies to help provide and enhance our service and tailor content. By continuing, you agree to the [use of cookies](#) ↗.



also developed by scimago: SCIMAGO INSTITUTIONS RANKINGS

SJR Scimago Journal & Country Rank

Home Journal Rankings Country Rankings Viz Tools Help About Us

Champions of customer service

Customer service is everywhere. That's why Zendesk creates conversational experiences

Zendesk [Learn More](#)

Open Access Macedonian Journal of Medical Sciences

<p>COUNTRY</p> <p>Macedonia</p> <p> Universities and research institutions in Macedonia</p>	<p>SUBJECT AREA AND CATEGORY</p> <p>Medicine</p> <p>↳ Medicine (miscellaneous)</p> <div style="border: 1px solid #ccc; padding: 5px; margin: 5px 0;"> <p>International Journal...</p> <p>Call for Papers 2022</p> <p>Open</p> </div>	<p>PUBLISHER</p>	<p>H-INDEX</p> <p>23</p>
<p>PUBLICATION TYPE</p> <p>Journals</p>	<p>ISSN</p> <p>18579655</p>	<p>COVERAGE</p> <p>2014-2021</p>	

International Journal...

Call for Papers 2022

[Open](#)

SCOPE

Information not localized

Join the conversation about this journal

American Journal Experts

Journal Author Services

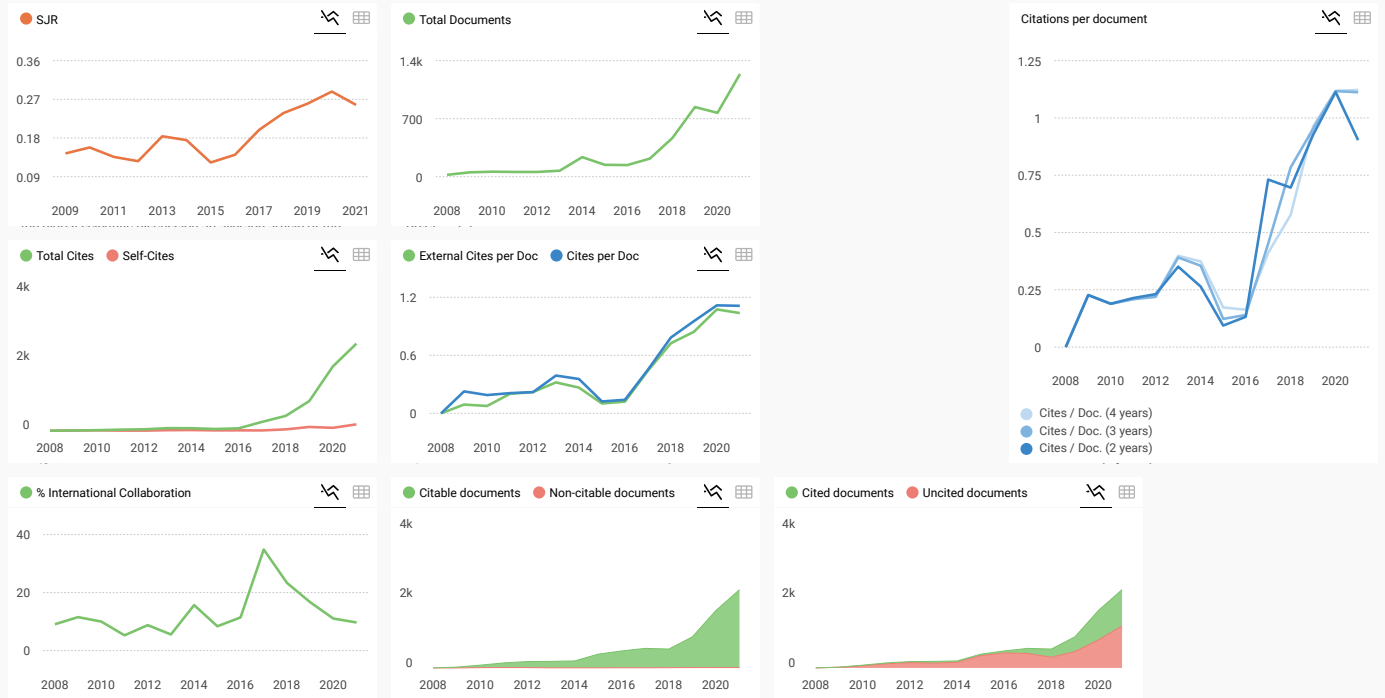
[Open](#)

FIND SIMILAR JOURNALS options

<p>1 Journal of Clinical and Diagnostic Research IND</p> <p>64% similarity</p>	<p>2 Journal of International Medical Research GBR</p> <p>61% similarity</p>	<p>3 Medicina (Lithuania) CHE</p> <p>61% similarity</p>	<p>4 Advances in Clinical and Experimental Medicine POL</p> <p>58% similarity</p>	<p>5 Medicine (United States) USA</p> <p>54% similarity</p>
--	--	---	---	---

Journal Author Services Open

AJE American Journal Experts



Open Access Macedonian Journal of Medical Sciences

Q3 Medicine (miscellaneous) best quartile

SJR 2021 0.26

powered by scimagojr.com

Show this widget in your own website

Just copy the code below and paste within your html code:

``

SCImago Graphica

Explore, visually communicate and make sense of data with our **new data visualization tool.**

Journal Author Services Open

AJE American Journal Experts

Metrics based on Scopus® data as of April 2022

 **Ghada Elgarawany** 4 weeks ago

Dear Scimago team,
I am the author of a paper named "Impact of high aspartame and high fructose diet on vascular reactivity, glucose metabolism and liver structure in diabetic rats", Manuscript ID = OJS8810. the paper was accepted on 22th of March 2022 by Open Access Macedonian Journal of Medical Sciences.
The payment of the fee was done on 8th of April, 2022.
5 months till now and the paper is not yet published.
Me and the corresponding author have sent many emails to the Chief Editor, Prof dr. Mirko Spiroski, and I tried to contact by phone, but unfortunately, until now, we have not received any information. Appreciate your advice.

 reply **Hamid Khaleel AL-tameemi** 3 days ago

Dear Author,
I suggest sending the journal team directly.

**Melanie Ortiz** 4 weeks ago

SCImago Team

Dear Ghada,
Thank you for contacting us. Unfortunately, SCImago cannot help you with your request. SJR is committed to help decision-making through scientometric indicators.
Best Regards, SCImago Team

**Mira** 1 month ago

Dear schimagojr team,

Kindly please check the Open Access Macedonian Journal of Medical Sciences Scopus ranking, it is still Q3 ?

 reply**Melanie Ortiz** 1 month ago

SCImago Team

Dear Mira,
Thank you for contacting us. Our data come from Scopus, they annually send us an update of the data. This update is sent to us around April / May every year. The SJR for 2021 was released on 11 May 2022 (based on Scopus data as of April 2022). Therefore, the indicators for 2022 will be available in May/June 2023 and before that date we can't know what will happen with this journal.
Best Regards, SCImago Team

 **Geralt of Rivia** 2 months ago

Dear colleagues

Just inform you

Open Access Macedonian Journal of Medical Sciences has been discontinued from scopus since June 2022 for "publication concern" reason. You could find it at the scopus discontinued source list June 2022 from scopus website.

 reply **Ardia** 2 months ago

Dear Geralt

How about a paper that is published before June 2022? Will it publish in Scopus or not?
Thank you for your information...

**Melanie Ortiz** 2 months ago

SCImago Team

OPEN ACCESS · MACEDONIAN
JOURNAL OF MEDICAL SCIENCES

oa
mjms
www.mjms.org.mk

B

Clinical
Sciences

ISSN 1857-9664 (print) | ISSN 1857-9672 (online)





[Home](#) / [Archives](#) / Vol. 8 No. B (2020): B - Clinical Sciences

Vol. 8 No. B (2020): B - Clinical Sciences



Published: 2020-01-02

Microbiology

Effect of Ethanol Extract and Ethyl Acetate Fraction of Betel Nut (*Areca catechu* L.) in Colonic Goblet Cells of Mice (*Mus musculus*) Given Orally Infective Egg of *Trichuris muris*

Endy Juli Anto, Aznan Lelo, Syafruddin Ilyas, Marline Nainggolan (Author)

637-642



PDF

Pharmacology

The Difference Scores of Positive and Negative Syndrome Scale Exited Components in Psychotic Agitation Patients of Haloperidol Injection and those Prescribed with the Injection of Haloperidol and Diazepam

Muhammad Affandi, Elmeida Effendy, Bahagia Loebis, Muhammad Surya Husada, Nazli Mahdinasari Nasution (Author)

631-636



PDF

A Pilot Study of the Evaluation of Using Antibiotics in Sepsis Patients in Palu, Indonesia

Alwiyah Mukaddas, Tatat Rahmita Utami, Amelia Rumi (Author)

1036-1040



PDF

Gastroenterohepatology

Clinical outcomes of non-variceal upper gastrointestinal bleeding and its relation to aspirin and anticoagulants.

Hend Radwan, Ehab Elsayed , Hesham Alshabrawi (Author)

11-19

 PDF

Nonalcoholic Fatty Liver Disease and the Risk of Atrial Fibrillation

Mahmoud A. Abou Omar, Ahmed Alaarag, Sherief Abd-Elsalam, Mohamed El-Abgeegy, Rehab Ahmed, Ahmed Abdelhaleem Mohamed, Mahmoud Khalil, Yousry Esam-Eldin Abo-Amer, Mahmoud Elkadeem, Mohamed Yousef (Author)

530-535

 PDF

The Correction Methods of the Intestinal Microflora in Chronic Colonic Stasis by Siphon Enema and Probiotics as a Means of the Hirschsprung-associated Enterocolitis Prevention

Galymzhan Burayev, Medet Khamitov, Vassily Lozovoy, Rasulbek Aipov, Elena Lozovaya, Lyudmila Akhmaltdinova, Kamshat Burayeva (Author)

580-585

 PDF

Nutritional Support for Patients with Diseases of Hepatopancreotoduodenal Zone in the Early After the Operational Period

Sherzad Davanov Kurbanalievich, Dmitry Vasiliev Vladimirovich, Nailya Amirbekovna Kabildina (Author)

769-774

 PDF

Dietary Patterns of Females with Cholelithiasis: A Comprehensive Study from Central Region of Saudi Arabia

Naila Rasheed, Razan A. Almeshal, Wasaif S. Almohaimeed, Emtenan A. Almeshal, Alhanuf M. Alofee, Adeem S. Alonazi, Amal A. Alshebrumi, Nada K. Alghaith, Wafa Alotaibi, Ebtehal Almogbel, Muhammad Ismail Khan (Author)

1193-1198

 PDF

Nephrology

Drug-induced Nephropathy and Molecular Patterns of Oxidative Stress

Valentina Lee, Ryszhan Bakirova, Larissa Muravlyova, Zhanara Turkhanova, Anar Rakhmetova (Author)

using Combination of Mini-mental State Examination, Digit Span, and Constructional Praxis

Achmad Adam, Christian Ariono, Muhammad Z. Arifin, Ahmad Faried (Author)

1180-1184



Neutrophil-to-lymphocyte Ratio and Platelet-to-lymphocyte Ratio Correlations with C-reactive Protein and Erythrocyte Sedimentation Rate in Traumatic Brain Injury

Gede Febby Pratama Kusuma, Sri Maliawan, Tjokorda Gde Bagus Mahadewa, Tjokorda Gde Agung Senapathi, Anak Agung Wiradewi Lestari, I Made Muliarta (Author)

1185-1192



Laparoscopic-assisted Gastrectomy for Gastric Cancer with D2 Lymphadenectomy: Experience with more than 500 Cases at Military Hospital, Vietnam

Ho Chi Thanh, Hoang Manh An, Dang Viet Dung, Nguyen Trong Hoe, Tran Doanh Hieu, Nguyen Van Tiep, Lai Ba Thanh, Le Thanh Son (Author)

1219-1224



Ophtalmology

Correlation between Age, Gender, Occupation, Residential Area, and the Occurrence of Eyelid Tumor in Medan, Indonesia

Lulu Anandita Putri, Rodiah Rahmawaty Lubis (Author)

249-252



The Analysis of Binahong Leaves Potential (*Anredera cordifolia*) as an Alternative Treatment of Anticataractogenesis

Feriyani Feriyani, Darmawi Darmawi, Ummu Balqis, Rodiah Rahmawaty Lubis (Author)

820-824



Topical Instillation of Resveratrol Preconditioned Wharton's Jelly Mesenchymal Stem Cell Secretome Preserves Ocular Surface in Experimental Model of Severe Dry Eye Disease

Diandra Astaridewi, Evelyn Komaratih, Yuyun Rindiasuti, Yohanes Widodo Wirohadidjojo, Djoko Legowo, Ni Made Inten Lestari, Diandra Astarti Dewi, I. Made Satya, Fedik A. Rantam, Cita R. S. Prakoeswa (Author)

1116-1123



Ear, Nose and Throat

The Association of CYP2E1 Polymorphism and Environmental Factor in Nasopharyngeal Carcinoma Patients

Farhat Farhat, Elvita Rahmi Daulay, Jessy Chrestella, Raudah Putri Syari (Author)

362-367

 PDF

Evaluation of Body Mass Index of 3–10-year-old Children with Adenotonsillar Hypertrophy, who Referred to Khatamolanbia Hospital during 2017–2018

Gholam-Ali Dashti Khavidaki, Reza Gharibi (Author)

324-328

 PDF

Latent Membrane Protein-1 Protein Induction toward Vascular Endothelial Growth Factor Expression in the Development of Nasopharyngeal Carcinoma

Jessy Chrestella, Farhat Farhat, Elvita Rahmi Daulay, Sheba Tarigan, Raudah Putri Syari (Author)

368-374

 PDF

Comparison Results of Automated Auditory Brainstem Response and Brainstem Evoked Response Audiometry for Hearing Loss Detection in High-risk Infants

Endang Susanti Warasanti, Nyilo Purnami, Soeprijadi Soeprijadi (Author)

593-596

 PDF

The Effects of Secondhand Smoke Exposure on Serum Immunoglobulin E Levels among Children of Elementary School

Asti Widuri, K Triwulandari (Author)

1240-1243

 PDF

Overview of Helicobacter pylori Detection Using Rapid Urease Test and Giemsa Modification Staining in Chronic Tonsillitis Patients

Ade Asyari, Ferdy Azman, Novialdi Novialdi, Aziz Djamal, Hafni Bachtiar (Author); Yayan Akhyar

1105-1109

 PDF

Radiology and Radiotherapy

Differentiating Benign from Suspicious Vertebral Marrow Lesions Detected with Conventional Magnetic Resonance Imaging Using Apparent Diffusion Coefficient and Diffusion-Weighted Image

Khaleel Ibraheem Mohson, Qusay Tayser Naief, Farah Abdul Jalil (Author)

114-118



Regression in the Symptoms and Discal Hernia in Case of Lumbar Radiculopathy

M. A. Ivanova, V. A. Parfenov, Ekaterina Silina, A. I. Isaykin (Author)

216-220



Performance Characteristics of Radiographic equipment in Selected Healthcare Institutions in Southwest Nigeria

Achuka Justina Ada, Usikalu Mojisola Rachael, Aweda Moses Adebayo, Adeyinka Abiodun Oludotun, Famurewa Olusola Comfort, Akinpelu Akinwumi (Author)

832-837



Computerized Tomography Score for the Assessment of Multiple Organ Failure and Determining Severity of Pancreatitis: Key Principles for the Assessment of Affected Organs

Madina Ermekova, Makash Aliyakparov, Kayrat Shakeev, Gulfayruz Zholdybaeva (Author)

913-920



The Role of MR Imaging and MR Angiography in the Evaluation of Patients with Headache

Tomislav Pavlović, Sanja Trtica, Marina Milošević, Hrvoje Budinčević, Igor Borić (Author)

815-819



Rehabilitation

Williams Flexion Exercise for Low Back Pain: A Possible Implementation in Rural Areas

William Sukmajaya, Firas Farisi Alkaff, Alina Oen, Alverina Cynthia Sukmajaya (Author)

1-5



Information

[For Readers](#)

[For Authors](#)

[For Librarians](#)

[Open Journal Systems](#)

[Make a Submission](#)

Browse

Categories

[A - Basic Sciences](#)

[B - Clinical Sciences](#)

[C - Case Reports](#)

[D - Dental Sciences](#)

[E - Public Health](#)

[F - Review Articles](#)

[G - Nursing](#)

[T - Thematic Issues](#)

[T1 - "Coronavirus Disease \(COVID-19\)"](#)

[T2 - "Public Health and Nutrition Sciences in the Current Millennial Era"](#)

[T3 - "Neuroscience, Neurology, Psychiatry and General Medicine"](#)

[T4 - "Contribution of Nurses on Sustainable Development Goals \(SDGs\)"](#)

[T5 - "Re-Advancing Nursing Practice, Education and Research in the Post Covid"](#)

[T6 - "The Challenges and Opportunities for Nurses in The New Era Adaptation"](#)

[T7 - "Neuroscience, Neurology, Psychiatry and Other Health Sciences - 2022"](#)

[T8 - "APHNI: Health Improvement Strategies Post Pandemic Covid-19"](#)



[Home](#) / [Editorial Team](#)

Editorial Team

Journal Manager

Eli Djulejic, MD. Open Access Macedonian Journal of Medical Sciences, Belgrade, Serbia

elispiroska@yahoo.com

ORCID iD: <https://orcid.org/0000-0002-1736-9029>

Web of Science ResearcherID: [AAC-3225-2020](https://orcid.org/0000-0002-1736-9029)

Scopus Author ID: [33767574400](https://orcid.org/0000-0002-1736-9029)

Editor-in-Chief

[Mirko Zhivko Spiroski](#), MD, PhD. Scientific Foundation SPIROSKI, Rajko Zhinzifov No 48, 1000

Skopje, Republic of Macedonia

mspiroski@yahoo.com

ORCID iD: <https://orcid.org/0000-0001-5559-7981>

Web of Science ResearcherID: [F-7606-2012](https://orcid.org/0000-0001-5559-7981)

Scopus Author ID: [6602348069](https://orcid.org/0000-0001-5559-7981)

Section Editors (Deputy Editors-in-Chief)

Stoleski Sasho, MD, PhD. Institute for Occupational Health of Republic of Macedonia - Skopje,

WHO Collaborating Center, GA2LEN Collaborating Center, II Makedonska brigada 43, 1000

Skopje, Republic of Macedonia

sstoleski@yahoo.com

ORCID iD: <https://orcid.org/0000-0003-1278-903X>

Web of Science ResearcherID: [B-2304-2015](https://orcid.org/0000-0003-1278-903X)

Scopus Author ID: [9943962300](https://orcid.org/0000-0003-1278-903X)

Slavica Hristomanova-Mitkovska, MD, MSc. Institute of Human Genetics, University Medical

Center Göttingen, Heinrich-Düker-Weg 12, 37079 Göttingen, Germany

cacka_h@yahoo.com

[ORCID iD: https://orcid.org/0000-0002-7770-5055](https://orcid.org/0000-0002-7770-5055)

[Web of Science ResearcherID: G-8801-2012](#)

[Scopus Author ID: 33767823700](#)

Igor Spiroski, MD. University Clinic of Cardiology, Faculty of Medicine, Ss Cyril and Methodius University of Skopje, Skopje, Republic of Macedonia

ispiroski@gmail.com

[ORCID iD: https://orcid.org/0000-0002-3448-0685](https://orcid.org/0000-0002-3448-0685)

[Web of Science ResearcherID: AAA-5652-2020](#)

[Scopus Author ID: 23971606200](#)

Ksenija Bogoeva-Kostovska, MD, PhD. PHO Prof Bogoev, Skopje, Republic of Macedonia

ksenijabogoeva@gmail.com

Sinisha Stojanovski, MD, PhD. Medical Faculty, Saints Cyril and Methodius University in Skopje, Skopje, Republic of Macedonia

sinisa.stojanoski@hotmail.com

[ORCID iD: https://orcid.org/0000-0002-4967-2102](https://orcid.org/0000-0002-4967-2102)

[Web of Science ResearcherID: AFL-9514-2022](#)

[Scopus Author ID: 6504203064](#)

Filip Koneski, Doctor of Dental Medicine, MSc. University Clinic for Maxillofacial Surgery in Skopje, Ss. Cyril and Methodius University in Skopje, Faculty of Dental Medicine, Skopje, Republic of Macedonia

dr.koneski@gmail.com

[ORCID iD: https://orcid.org/0000-0003-2412-7594](https://orcid.org/0000-0003-2412-7594)

[Web of Science ResearcherID: J-9194-2019](#)

[Scopus Author ID: 57073856400](#)

Aleksandar Iliev, Doctor of Dental Medicine, PhD. Department of Maxillofacial Surgery, Faculty of Dentistry, The Saints Cyril and Methodius University of Skopje, Skopje, Republic of Macedonia

aleksandar.iliev@gmail.com

[ORCID iD: https://orcid.org/0000-0001-5348-9143](https://orcid.org/0000-0001-5348-9143)

[Web of Science ResearcherID: ACV-7553-2022](#)

[Scopus Author ID: 57021392000](#)

Layout Editor and Electronic Publishing

Ivo Spiroski, Eng, MSc. Scientific Foundation SPIROSKI, Rajko Zhinzifov No 48, 1000 Skopje, Republic of Macedonia

ivospiroski@gmail.com

ORCID iD: <https://orcid.org/0000-0003-4518-2138>

[Web of Science ResearcherID: F-2799-2014](https://www.scopus.com/authid/detail.url?authorID=57202141000)

Prtoduction Editor

Copyeditor

Sinjore, India

Evidence Based Medicine

Prof. Dr. Katarina Stavric, Children Hospital Skopje, Macedonia, Vodnjanska 17, University "Ss Cyril and Methodius", Skopje, Republic of Macedonia

Editorial Board

DDS, MS, PhD, Associate Professor Nikola Angelov, Director of the Pre-Doctoral Periodontics Clinic, Loma Linda University School of Dentistry, Department of Periodontics. Loma Linda, CA, 92350, United States

Assist. Prof. Dr. Ramush Bejiqi, University Clinical Centre of Kosovo, Paediatric Clinic, Albania

Prof. Semra ÄEvaljuga, Department of Epidemiology and Biostatistics, Faculty of Medicine, Sarajevo, Bosnia and Herzegovina

MD Pei-Yi Chu, Diagnostic and research pathologist, Department of Surgical Pathology, Changhua Christian Hospital, Taiwan. Address: 135 Nan-Shiao Street, Changhua 500-06,, Taiwan, Province of China

MD, PhD Ivo Donkov, Staff Urologist, Lincoln County Hospital, United Kingdom

MD, PhD Andrew J. Dwork, Departments of Pathology and Cell Biology and Psychiatry, College of Physicians and Surgeons of Columbia University; Division of Molecular Imaging and Neuropathology, New York State Psychiatric Institute, Unit 62, 722 West 168th Street, New York,

NY 10032, United States

Adriana Galan, Department of Health Programmes and Health Promotion, Institute of Public Health, Bucharest, Romania

Prof. Tania Santos Giani, Estacio de Sa University, in Health Sciences, Brazil

PhD Iva Ivanovska, Harvard Medical School, Department of Genetics, 77 Avenue Louis Pasteur, NRB room 239, Boston, MA 02115, United States

MD, PhD Jerzy JabÅ, ecki, Associate Professor, Division of General Surgery St. Jadwiga of Silesia Hospital, Trzebnica; Head, Subdepartment of Hand Surgery an Replantation St Jadwiga of Silesia Hospital, Trzebnica; Professor, Department of Public Health, State Higher Professional Medical School, Opole, Poland. 55-100 Trzebnica, ul. Prusicka 53, Poland

MD Mehrdad Jalalian Hosseini, Khorasan-e Razavi Blood Center, Mashhad, Iran, Islamic Republic of

PhD Radka Kaneva, Department of Medical Chemistry and Biochemistry, Medical University - Sofia, Bulgaria

Prof. Dr. Kostandina Leonida Korneti-Pekevaska, Ss Cyril and Methodius University of Skopje, Faculty of Medicine, Skopje, Republic of Macedonia

MD, PhD Branko Malenica, Department of Immunology, Clinical Hospital Center Zagreb, Zagreb University School of Medicine, Zagreb, Croatia

Prof. Dr. Elida Mitevaska, Institute of Histology and Embriology, Faculty of Medicine, Ss Cyril and Methodius University of Skopje, Skopje, Republic of Macedonia

MD, PhD Marija Mostarica-StojkoviÅ, Institute of Microbiology and Immunology, University of Belgrade School of Medicine, Belgrade, Serbia

PhD Vesna Nikolova-Krstevski, Harvard Institutes of Medicine, HIM-201, 4 Blackfan Circle, Boston, MA, 02134, United States

Prof. Dr. Nikola Panovski, Institute of Microbiology and Parasitology, Faculty of Medicine, Skopje, Republic of Macedonia

MD, BIDMC Iva Petkovska, Beth Israel Deaconess Medical Center Radiology W CC - 3 330 Brookline Ave. Boston, MA 02215, United States

Prof. Dr. Gordana Petrusevska, Institute of Pathology, Medical Faculty, University of Ss. Cyril

and Methodius“ Skopje, Republic of Macedonia

Prof. Enver Roshi, Dean of Faculty of Public Health, Medical University of Tirane, Chief of Epidemiological Observatory, National Institute of Public Health. Address: Rruga e Dibres, Str. 371, Tirana, Albania

MD, PhD Gorazd B. Rosoklija, Professor at Columbia University and member of the Macedonian Academy of Sciences and Arts, United States

Prof. Dr. Aleksandar Sikole, University Clinic for Nephrology, Faculty of Medicine, Ss Cyril and Methodius University of Skopje, Skopje, Republic of Macedonia

MD, FESC Gianfranco Sinagra, Department of Cardiology, “Ospedali Riuniti” and University of Trieste, Ospedale Cattinara “ Strada di Fiume, 447, 34149 “ Trieste, Italy

MD, PhD Rumen Stefanov, Information Centre for Rare Diseases and Orphan Drugs (ICRDOD), Bulgaria; Department of Social Medicine, Medical University of Plovdiv, Bulgaria

Prof. Dr. Vesna Velikj Stefanovska, Department of Epidemiology and Biostatistics with Medical Informatics, Medical Faculty, UKIM, Skopje, Republic of Macedonia

MD, MBA Milenko Tanasijevic, Director, Clinical Laboratories Division and Clinical Program Development, Pathology Department, Brigham and Women's Hospital, Dana Farber Cancer Institute, Associate Professor of Pathology, Harvard Medical School, United States

MD, FRCPC Kiril Trpkov, Associate Professor, University of Calgary, Department of Pathology and Laboratory Medicine, Calgary Laboratory Services. 7007 14 st, Calgary SW, Canada

MD, PhD Igor Tulevski, Department of Cardiology, Academic Medical Center, Amsterdam, 1100 DD, T 020 707 2930; F 020 707 2931, Netherlands

Past Members of Editorial Team

Prof. Dr Doncho Donev, Institute of Social Medicine, Medical Faculty, Ss Cyril and Methodius University of Skopje, Skopje, Republic of Macedonia

Prof. Dr Olivera Stojceva Taneva, University Clinic of Nephrology, Republic of Macedonia

Prof. Dr Petar Miloshevski, from 2008-2014, Institute of Preclinical and Clinical Pharmacology with Toxicology, Faculty of Medicine, Skopje, Republic of Macedonia

Prof. Dr Sonja Topuzovska, Institute of Medical and Experimental Biochemistry, Faculty of Medicine, Skopje, Republic of Macedonia

Prof. Dr. Aleksandar Dimovski, Institute of Pharmaceutical Chemistry, Faculty of Pharmacy, University "Ss Kiril and Metodij", Skopje, Republic of Macedonia

PhD Mirko Trajkovski, ETH Zurich, Wolfgang-Pauli-Str. 16/HPT D57, 8093 Zurich-CH, Switzerland

PhD Zoran Zdravkovski, Institute of Chemistry, Faculty of Natural Sciences and Mathematics, Ss Cyril and Methodius University of Skopje, Skopje, Republic of Macedonia

Information

[For Readers](#)

[For Authors](#)

[For Librarians](#)

[Open Journal Systems](#)

[Make a Submission](#)

Browse

Categories

[A - Basic Sciences](#)

[B - Clinical Sciences](#)

[C - Case Reports](#)

[D - Dental Sciences](#)

[E - Public Health](#)

[F - Review Articles](#)

[G - Nursing](#)

[T - Thematic Issues](#)

[T1 - "Coronavirus Disease \(COVID-19\)"](#)

T2 - "Public Health and Nutrition Sciences in the Current Millennial Era"

T3 - "Neuroscience, Neurology, Psychiatry and General Medicine"

T4 - "Contribution of Nurses on Sustainable Development Goals (SDGs)"

T5 - "Re-Advancing Nursing Practice, Education and Research in the Post Covid"

T6 - "The Challenges and Opportunities for Nurses in The New Era Adaptation"

T7 - "Neuroscience, Neurology, Psychiatry and Other Health Sciences - 2022"

T8 - "APHNI: Health Improvement Strategies Post Pandemic Covid-19"

PKP Publishing Services

Part of the
PKP Publishing Services Network

Published by



About us

[About the Journal](#)

Editorial Team

Author Fees

Online Payments

Bibliographic Information

Journal History

Information

[For readers](#)

[For authors](#)

[For librarians](#)

[For](#)

[Reviewers](#)

Transparency

Contact

Publisher

Co

publisher

Registration

Contact

Privacy

statement

Platform &
workflow by
OJS / PKP



Topical Instillation of Resveratrol Preconditioned Wharton's Jelly Mesenchymal Stem Cell Secretome Preserves Ocular Surface in Experimental Model of Severe Dry Eye Disease

Diandra Astaridewi¹, Evelyn Komaratih¹, Yuyun Rindiastuti¹, Yohanes Widodo Wirohadidjojo², Djoko Legowo³, Ni Made Inten Lestari¹, Diandra Astari Dewi¹, I. Made Satya¹, Fedik A. Rantam⁴, Cita R. S. Prakoeswa^{5*}

¹Department of Ophthalmology, Faculty of Medicine, Universitas Airlangga, Dr. Soetomo General Academic Hospital, Surabaya, Indonesia; ²Department of Dermatovenerology, Faculty of Medicine, Universitas Gadjah Mada, Dr. Sardjito General Academic Hospital, Radioputro Building, Yogyakarta, Indonesia; ³Department of Pathology Anatomy, Faculty of Veterinary Medicine, Universitas Airlangga, Kampus C Mulyorejo, Surabaya, Indonesia; ⁴Stem Cell Research and Development Center, Universitas Airlangga, Tropical Disease Center Building, Kampus C Mulyorejo, Surabaya, Indonesia; ⁵Department of Dermatovenerology, Faculty of Medicine, Universitas Airlangga, Dr. Soetomo General Academic Hospital, Surabaya, Indonesia

Abstract

BACKGROUND: Secretome derived from Wharton's jelly mesenchymal stem cells (WJ-MSC) has a beneficial effect for ocular surface regeneration; however, the high amount of vascular endothelial growth factor (VEGF) remains a challenge for its application.

AIM: The aim of the study was to investigate the effect of resveratrol (RV) (VEGF reducing agent) preconditioned WJ-MSC secretome in Concanavalin A-induced severe dry eye model.

METHODS: Pre- and post-experimental study composed of topical instillation of WJ-MSC secretome group, balanced salt solution control group, and normal control group. Tear production, tear break-up time (TBUT), corneal fluorescein dye staining, VEGF level in aqueous tear, goblet cell density, and inflammatory cells in the ocular surface were analyzed.

RESULTS: Topical instillation of RV preconditioned WJ-MSC secretome successfully improved tear film production ($p = 0.008$) and TBUT ($p = 0.008$), promoted goblet cell restoration ($p = 0.023$) and reduced corneal fluorescein staining ($p = 0.003$), while inhibited infiltration of inflammatory cells ($p = 0.01$) and secretion of VEGF in aqueous tear ($p = 0.003$).

CONCLUSION: Topical instillation of RV preconditioned WJ-MSC secretome has great potential as cell-free based therapy to preserve ocular surface in an experimental model of severe Dry eye disease.

Edited by: Ksenija Bogoeva-Kostovska
Citation: Astaridewi D, Komaratih E, Rindiastuti Y, Wirohadidjojo YW, Legowo D, Lestari NI, Dewi DA, Satya IM, Rantam FA, Prakoeswa CRS. Topical Instillation of Resveratrol Preconditioned Wharton's Jelly Mesenchymal Stem Cell Secretome Preserves Ocular Surface in Experimental Model of Severe Dry Eye Disease. Open Access Maced J Med Sci. 2020 Oct 30; 8(B):1116-1123. https://doi.org/10.3889/oamjms.2020.5305
Keywords: Mesenchymal stem cell; Resveratrol; Secretome; Dry eye disease; Ocular surface
***Correspondence:** Cita R.S. Prakoeswa, Department of Dermatovenerology, Faculty of Medicine, Universitas Airlangga, Dr. Soetomo General Academic Hospital, Surabaya. Jl. Mayjen. Prof. Dr. Moestopo 4-7, Surabaya, 60132. E-mail: cita-rosita@fk.unair.ac.id
Received: 24-Jul-2020
Revised: 15-Oct-2020
Accepted: 19-Oct-2020
Copyright: © 2020 Diandra Astaridewi, Evelyn Komaratih, Yuyun Rindiastuti, Yohanes Widodo Wirohadidjojo, Djoko Legowo, Ni Made Inten Lestari, Diandra Astari Dewi, I. Made Satya, Fedik A. Rantam, Cita R. S. Prakoeswa
Funding: This research did not receive any financial support
Competing Interests: The authors have declared that no competing interests exist
Open Access: This is an open-access article distributed under the terms of the Creative Commons Attribution-NonCommercial 4.0 International License (CC BY-NC 4.0)

Introduction

Dry eye disease (DED) is an important public health problem that could hinder the performance of daily living activities, and therefore decreases the quality of life [1], [2]. The inflammatory process in accordance with downregulation of growth factors such as epidermal growth factor (EGF), hepatocyte growth factor (HGF), and keratinocyte growth factor, while increasing of vascular endothelial growth factor (VEGF) leads to ocular surface damage in DED. VEGF-A, member of the cysteine superfamily plays a key role in corneal neovascularization [3], [4], [5], [6]. The mainstay

therapy for DED is the application of artificial tears and topical anti-inflammatory or immunosuppressant that provides additional lubrication for the ocular surface and improves the symptoms of chronic inflammation. However, limited results and adverse ocular effects have been reported. In recent years, regenerative therapy has emerged a new strategy that promises an improvement in the management of DED [1], [2], [7].

Wharton's jelly mesenchymal stem cells (WJ-MSC) are multipotent stem cells with the ability to differentiate into many mesoderm cell lineages. Investigation of MSC to treat immune-mediated disease has gained encouraging results [1], [2]. MSC transplantation has raised exciting expectations in

the treatment of DED and regeneration of the ocular surface damage [1], [3]. Immunomodulation as a basic therapeutic effect of stem cells is accomplished by the secreted bioactive factors that act as autocrine and paracrine effects in the term of cell secretome [8], [9]. The remain question in the management of dry eye using stem cells product is to elaborate the tolerable and effective MSC conditioned eye drop with low VEGF as the main of pro-angiogenic factor. Several attempts have been made to stimulate specific growth factors released by MSCs, such as manipulating culture with hypoxic condition, 3D culture system, and small molecule supplementation [1], [2]. Resveratrol (RV) is a small molecule phytoalexin agent, with a significant effect in reducing VEGF secretion in various cell lines [5], [6]. In this study, we adopted strategy by preconditioning MSC with RV to promote the secretion of EGF and HGF, while reducing VEGF secretion as the key growth factors for cell-free base therapy in DED. This study aimed to investigate the effects of topical instillation of RV preconditioned WJ-MSC secretome in the preservation of ocular surface in Concanavalin A-induced severe DED model.

mixed enzymatic-explant method [10]. Cell pellets were suspended in a culture medium composed of α -MEM, 1% penicillin-streptomycin, 1% amphotericin B, 1% non-essential amino acid (NEAA), 5% fetal bovine serum (FBS), and 5 ng/mL basic fibroblast growth factor, then stored in an incubator at 37°C and 5% CO₂. Cell characterization was conducted using FACS flow cytometry using CD44, CD105, and CD45 antibody. A total amount of 5×10^3 cells/well of WJ-MSC at passage 4 was cultured in 96 multiwall plate with culture media for 24 h to obtain 70% confluency. The cells treated for 24 h using media composed of α -MEM, 1% penicillin-streptomycin, 1% amphotericin B, 1% NEAA, and 2% FBS supplemented with 0.1 μ M RV after 70% of confluency was reached. The level of VEGF, EGF, and HGF in cell supernatant was measured using ELISA according to Bioassay Technology Laboratory protocol (Shanghai, China). The secretome was collected then filtered using 0.45 μ m Millipore filter, the osmolarity and acidity were adjusted for 270–300 mOsm/L and 7.2–7.5, respectively. The secretome was packaged into a single-dose application in a sterile Eppendorf tube at 50 μ l volume to avoid contamination and maintain the stability. The secretome was stored at –20°C until further application.

Materials and Methods

Materials

Reagents included balanced salt solution (BSS) and Concanavalin A (ConA) from Sigma (St Louis, Missouri, USA). EGF, HGF, and VEGF-A enzyme-linked immunosorbent assay (ELISA) kit from Bioassay Technology Laboratory (Shanghai, China), hematoxylin-eosin (HE) from Merck (Massachusetts, USA), phycoerythrin (PE) conjugated antibodies against CD44, CD105, and CD45 and FACS Attune Acoustic Focusing Cytometer software from BD bioscience (New Jersey, USA). For the clinical experiment, we used Hamilton syringe with a 33-gauge needle (Hamilton, Reno, NV), Schirmer filter paper (Eye care products, India), fluorescein paper strip (Eye care products, India), portable slit lamp (KOWA SL-17, UK), light microscope from NIKON H600L with DS Fi32 300 megapixel camera, and Canon digital camera (A2500, 16 Megapixel).

Methods

Stem cell isolation and secretome production

Wharton's jelly MSC was isolated from a single donor of umbilical cord, obtained from a healthy baby through caesarian section using the aseptic technique. The baby's umbilical cord of length 3 cm was collected after the mother's consent (ethical clearance number: 1293/KEPK/VII/2019). Cells were isolated using the

Animal model and treatment

All experiments were conducted with approval from the Animal Care and Use Committee, Faculty of Veterinary Medicine Universitas Airlangga (2.KE.099.05.2019). Three-month-old male New Zealand White Rabbits were purchased from The National Agency of Drug and Food Control of Republic Indonesia and maintained in a specific pathogen-free environment. The experiment was divided into three groups, including topical instillation of RV preconditioned WJ-MSC secretome group, BSS control group, and normal control group. The experiments were repeated in three independent experiments, and each of them included at least five rabbits per group. A total of 15 male rabbits with bodyweight 2.5–3 kg were randomly assigned to one of three groups with five rabbits in each group. To create a severe DED model, we conducted resection of half parts of the inferior lacrimal gland and intraglandular injection of 300 μ g ConA in 20 μ L PBS using Hamilton syringe with a 33-gauge needle. Topical instillation of MSC secretome was administered every 8 h for 7 days in the treatment group as well as topical instillation of BSS in BSS control group. No lacrimal gland manipulation and treatment were given in the normal control group.

Measurement of tear production using Schirmer tear test (STT)

Aqueous tear production was measured with standardized Whatman Schirmer paper. The paper was

inserted in the lateral cantus for 60 s and the length of wetting paper was measured in millimeters.

Tear break-up time (TBUT)

TBUT was determined by applying sodium fluorescein test strips onto the inferior conjunctival fornix, following which, the eyelids were opened and closed manually to distribute the fluorescein within the tear film. The eye was manually opened and the time between blink and appearance of first black spot in the pre-corneal tear film was observed under a portable slit lamp with cobalt blue illumination and recorded in second.

Corneal fluorescein dye staining

To evaluate the corneal epithelial integrity, corneal staining was performed by pre-wetted sodium fluorescein test strips onto the inferior lateral conjunctival sac. The corneal surface was observed in the portable slit lamp, cobalt blue light, and zoom 16 times. Photographs were taken with digital camera (Canon, A2500, 16 Megapixel), each image was coded to match pre- and post-treatment. The area of fluorescein staining was evaluated using Image J (v1.48) in 3 times by independent observer for the group assignment.

Histopathology

Enucleation procedure was performed to get the whole eyeball. The eyeball was stored in formalin and sliced in 4 μm and subjected to H&E staining. The histopathological section then examined in five different visual fields using Nikon H600L microscope under $\times 400$ magnification. Goblet cell density presented as mean of goblet cell density, the infiltration of the inflammatory cell was counted using Cell Count Nikon Image Systems and presented as mean of inflammatory cell.

Measurement of VEGF-A level in the tear film

VEGF measurement was conducted to determine the angiogenic factor that was contained in aqueous tear result from the inflammatory condition of the ocular surface. VEGF was measured using VEGF-A ELISA kit according to the protocol from Bioassay Technology Laboratory, Shanghai, China. Briefly, 20 μL of aqueous tear was collected using 20 μL micropipette in lateral cantus region of the eye. A total amount of 20 μL sample was placed into ELISA well plate, with biotinylated antibody and streptavidin HRP added and incubated at 37°C for 60 min. Sample was washed $\times 3$ with buffer, with solution A and B added and incubated at 37°C for 10 min. Finally, stop solution was added and the plate was read immediately using a microplate reader at an absorbance of 450 nm.

Statistical analysis

Statistical analyses regarding STT and TBUT data were Kruskal–Wallis test and Mann–Whitney *post-hoc* test. The level of VEGF-A in aqueous tear, area of fluorescein dye staining, goblet cell density, and inflammatory cells was analyzed using one way ANOVA and Games-Howell *post-hoc* test. All of the results considered to be significant if $p < 0.05$.

Results

Stem cell secretome

We were successfully cultured cell population that fulfilled MSC criteria such as fibroblast-like formation, adhere to culture dish, positive for CD44 and CD105, but negative for CD45 with flow cytometry analysis as depicted in Figure 1. RV at 0.1 μM promotes HGF secretion (250 ± 8 pg/mL) and EGF secretion (76.67 ± 15.67 pg/mL), while the VEGF secretion was quite low (65 ± 5.02 pg/mL).

Topical instillation of RV preconditioned WJ-MSC secretome increased tear production

The tear production was significantly increased after topical instillation of WJ-MSC secretome group (Table 1 and Figure 2). In addition, topical instillation of WJ-MSC secretome significantly improved TBUT score, indicating recovery of tear film stability (Table 1).

Table 1: Topical instillation of RV preconditioned WJ-MSC secretome improved tear production and TBUT

Time point	WJ-MSC secretome		BSS control		Normal control	
	STT (mm)	TBUT (s)	STT (mm)	TBUT (s)	STT (mm)	TBUT (s)
Day-0	4.10 \pm 0.22	5.4 \pm 0.54	4.0 \pm 0.0	5.4 \pm 0.57	21.2 \pm 0.83	16.4 \pm 0.54
Day-7	12.6 \pm 0.89 ^{ab}	10.4 \pm 1.14 ^{ab}	4.8 \pm 0.83 ^b	5.6 \pm 0.54 ^b	20.6 \pm 0.89	17.0 \pm 0.58

^a $p < 0.05$ versus BSS control, ^b $p < 0.05$ versus normal control (Kruskal–Wallis, Mann–Whitney *post-hoc* test). WJ-MSC: Wharton's jelly mesenchymal stem cell, BSS: Balanced salt solution, STT: Schirmer tear test, TBUT: Tear break-up time.

Topical instillation of RV preconditioned WJ-MSC secretome promoted regeneration of corneal epithelial cell

Before topical instillation of MSC secretome, all eyes had the same baseline profile of ocular surface conditions. After topical instillation of WJ-MSC secretome, ocular surface improvement in the treatment group was observed by day 7. This was shown by reduction into mild ciliary hyperemia without any corneal opacity and decreased of fluorescein dye staining area as the sign of corneal epithelial defect compare to the BSS control group (Figure 3 and Table 2).

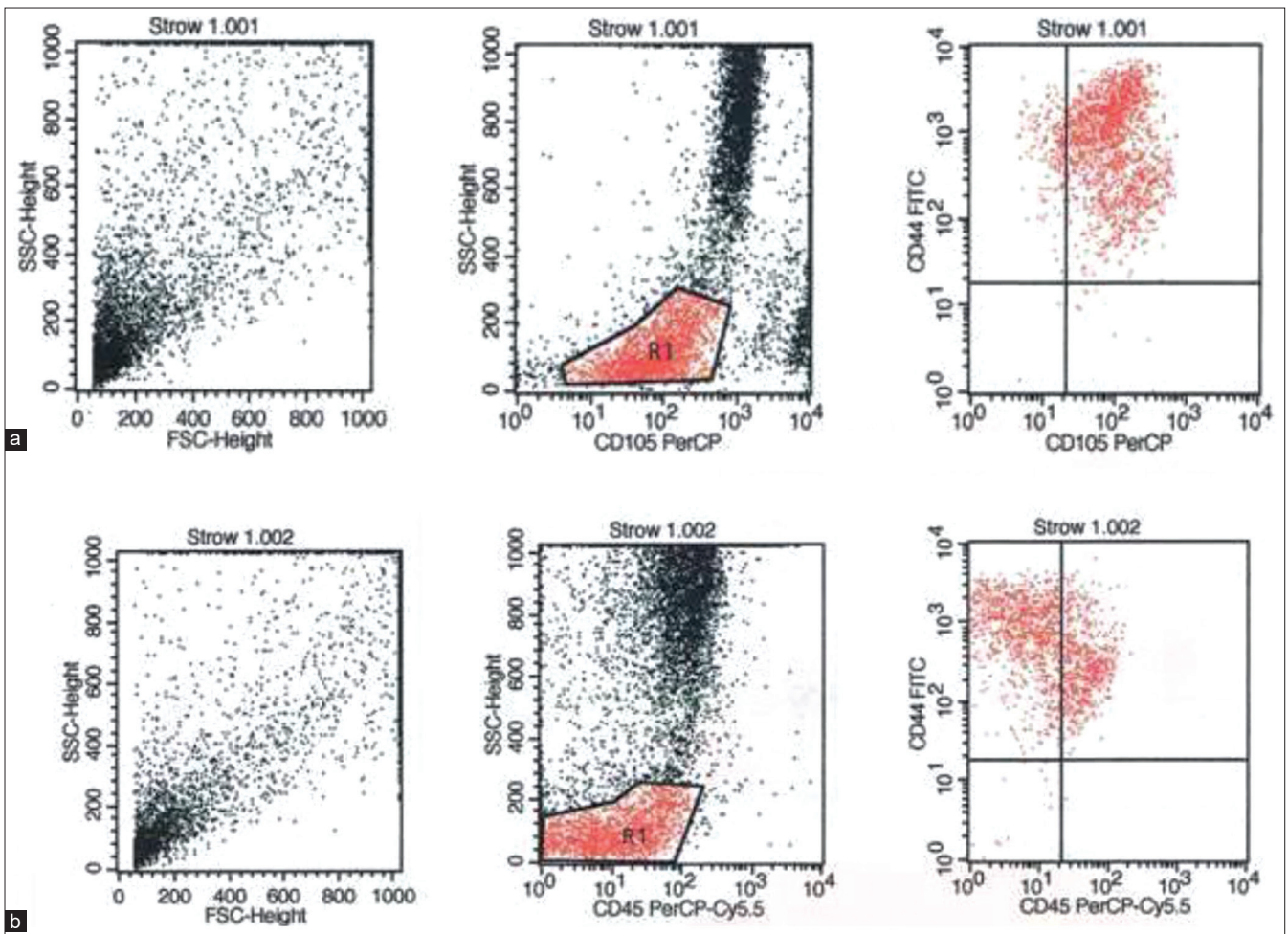


Figure 1: Identification of CD44, CD105, CD45 cell population using flow cytometry, (a) cell positive for CD44 and CD105 (88.94–89.01%), (b) cell positive for CD45 and negative for CD44 (0.08%)

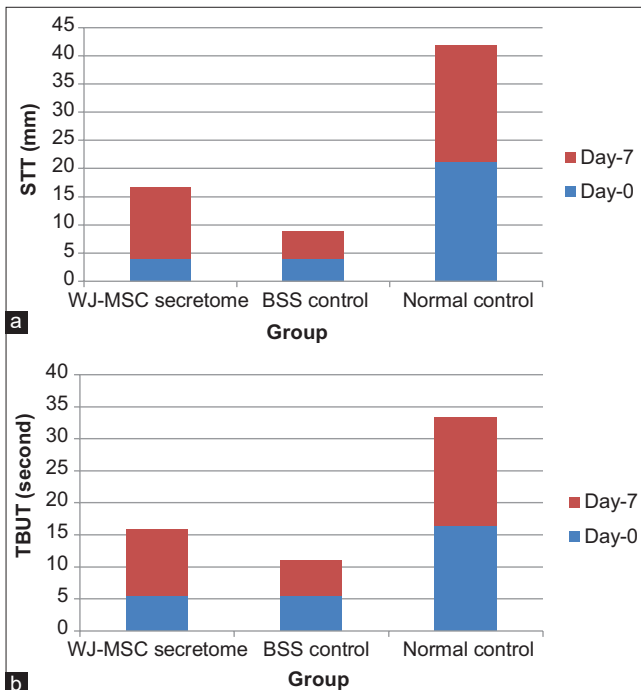


Figure 2: STT and TBUT score among groups. The graphs showed the changes of STT and TBUT score before and after treatment. WJ-MSC: Wharton's jelly mesenchymal stem cell, BSS: Balanced salt solution, STT: Schirmer tear test, TBUT: Tear break-up time

Topical instillation of RV preconditioned WJ-MSC secretome restored goblet cell in the conjunctiva

HE staining of the conjunctiva showed that the number of goblet cells which are responsible for mucous tear production was markedly decreased in BSS control group (0.84 ± 0.21 cells/visual field) (Figure 3). The conjunctival goblet cell count was significantly higher in the eyes with topical instillation of WJ-MSC secretome (2.4 ± 0.8 cells/visual field, $p = 0.023$) compared to the BSS control group. However, the restoration of goblet cell populations was markedly different from the normal control group (12.89 ± 2.99 cells/visual field, $p = 0.002$) (Figure 4 and Figure 5).

Topical instillation of RV preconditioned WJ-MSC secretome decreased infiltration of inflammatory cells in the ocular surface

HE staining showed the highest infiltration of inflammatory cells, mainly neutrophil and lymphocytes in the BSS group (406.88 ± 117.09 cells/visual field). The treatment with topical instillation of WJ-MSC secretome (144.40 ± 56.92 cells/visual field, $p = 0.01$)

Table 2: Mean area of fluorescein dye staining in cornea

Treatment group	Fluorescein dye staining area Day-0 (Pixel)	Fluorescein dye staining area Day-7 (Pixel)
BSS control	$7.92 \times 10^3 \pm 3.67 \times 10^4$	$1.2 \times 10^6 \pm 8.51 \times 10^4$
WJ-MSC secretome	$7.98 \times 10^3 \pm 2.09 \times 10^4$	$1.92 \times 10^5 \pm 1.05 \times 10^{4a}$

^ap < 0.05 versus BSS control group at 7 days after treatment (independent t-test). WJ-MSC: Wharton's jelly mesenchymal stem cell, BSS: Balanced salt solution.

markedly decreased the infiltration of inflammatory cells compared to BSS control group, in which neutrophil was the predominance inflammatory cell. We found that inflammatory cell in WJ-MSC secretome group was 2.5 fold higher than the normal control group (58.88 ± 20.01 cells/visual field, $p = 0.055$); however, it was not significant (Figure 5).

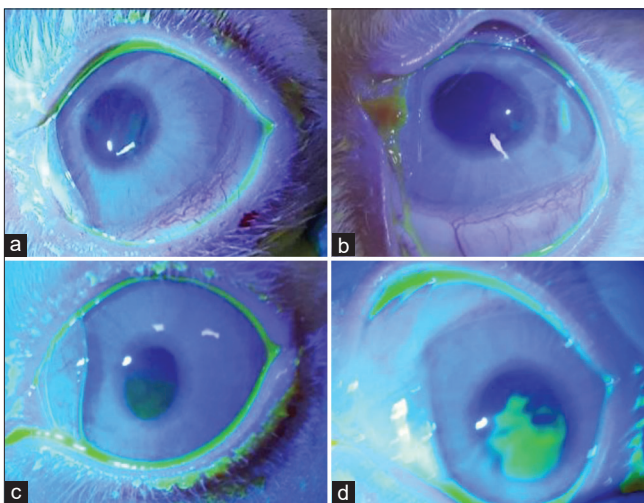


Figure 3: Topical instillation of RV preconditioned WJ-MSC secretome promoted corneal epithelial regeneration. Fluorescein dye staining in cornea at day-0: (a) WJ-MSC secretome group, (c) BSS control. Fluorescein dye staining in cornea at day-7: (b) WJ-MSC secretome group, (d) BSS control. WJ-MSC: Wharton's jelly mesenchymal stem cell, BSS: Balanced salt solution, Green staining: Fluorescein staining in corneal epithelial defect

Topical instillation of RV preconditioned WJ-MSC secretome reduced VEGF-A level in aqueous tear

The level of VEGF-A in aqueous tear was relatively similar at baseline between WJ-MSC secretome group and BSS control group. Topical instillation WJ-MSC secretome significantly reduced VEGF level (11.7 ± 2.79 pg/mL, $p = 0.003$) in aqueous

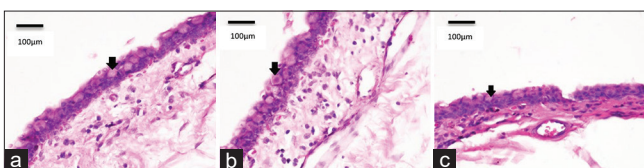


Figure 4: Topical instillation of RV preconditioned WJ-MSC secretome restored corneal goblet cell density (arrow: Goblet cell). (a) WJ-MSC secretome group, (b) normal control group, (c) BSS control group. WJ-MSC: Wharton's jelly mesenchymal stem cell, BSS: Balanced salt solution. (Hematoxylin-eosin staining, 400× magnification, light microscope, Nikon H600L with DS Fi2 300 megapixel camera). Black bar: 100 μm

tear compared to the BSS control group (55.55 ± 13.3 pg/mL) (Figure 5). However, the VEGF level still higher than the normal control group (5.05 ± 1.51 pg/mL, $p = 0.009$).

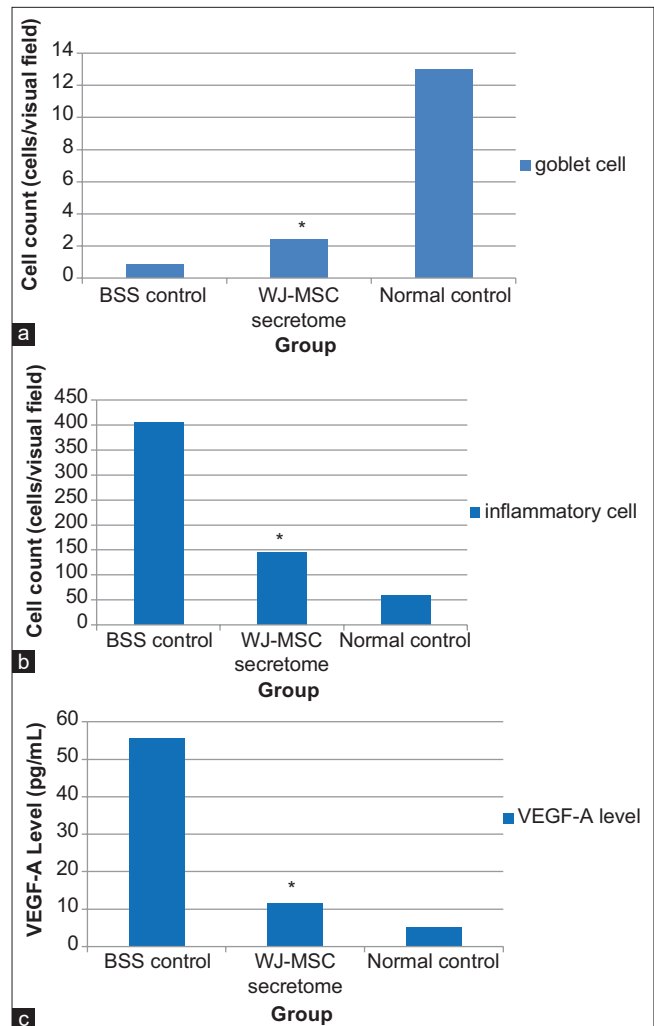


Figure 5: The effect of topical instillation of RV preconditioned WJ-MSC secretome on goblet cell, infiltration of inflammatory cell in ocular surface, and vascular endothelial growth factor (VEGF)-A level in aqueous tear. (a) Goblet cell number, (b) inflammatory cell number, (c) VEGF-A level. WJ-MSC: Wharton's jelly mesenchymal stem cell, BSS: Balanced salt solution. *p < 0.05 versus BSS control group

Discussion

To best of our knowledge, this is the first study conducted to develop the conditioned secretome using RV supplementation to decrease VEGF secretion. In this study, 0.1 μM RV was successfully to promote the secretion of EGF and HGF, while decreases the level of VEGF. The previous study revealed that conditioned media from retinal pigment epithelial (RPE) cells treated with RV has the ability to inhibit human umbilical vein endothelial cells tube formation. RV at 50 μM concentration suppressed VEGF secretion in hypoxic RPE cells through inhibition of CXC-chemokine

receptor 4 [5], [6], [9], [10], [11]. This is the first study that investigated the therapeutic effect of the topical application of specifically manufactured stem cell secretome in severe DED model. A number of researches have already explored the effect of MSC secretome on corneal regeneration; however, this corneal defect was not co-exist with the presence of DED in which lacrimal gland dysfunction and inflammatory process are the main underlying pathologies [3], [9], [12], [13].

Our study revealed a significant improvement of tear production after topical instillation of RV preconditioned WJ-MSC secretome in the animal model of severe DED. The recovery of lacrimal gland function might be related to the immunomodulatory effect of the secreted product derived from WJ-MSC. However, the histological section of the lacrimal gland has yet to be evaluated in this study. Other study demonstrated that intraglandular transplantation of MSC reduced the infiltration of inflammatory cells in the intraorbital gland and ocular surface of the murine model of ConA-induced inflammatory dry eye. Other study reported a significantly increased tear production and goblet cell number through the immunomodulatory effect of MSC without long-term engraftment. Evidence of no long-term engraftment indicated that MSC exerts their therapeutic potential by their paracrine effect of cell-secreted factors [14], [15]. Single dose of allogeneic MSC transplantation in a dog with mild to moderate DED showed a significant increase in STT and ocular surface improvement in short- and long-term follow-up. However, an experimental study in a dog with severe DED revealed the improvement of STT and clinical sign without complete restoration of ocular surface status [16]. In another study, topical instillation of MSC in a week leads to an increase in aqueous tear volume and improvement in ocular surface evaluation tests in benzalkonium chloride-induced dry eye model in rats. The study reported that topical instillation of MSC might decrease inflammation, increase tear volume production and improve clinical appearance of the ocular surface [7].

We found an improvement of ocular surface inflammation after topical instillation of RV preconditioned WJ-MSC secretome. This clinical profile was in accordance with lower infiltration of inflammatory cells within conjunctiva and cornea that may describe the immunomodulatory effect of WJ-MSC secreted factors, mainly the anti-inflammation effect. The previous study stated that the innate and adaptive immune response is governed the immunomodulatory effect of MSC, through the secretion of different soluble substances in their secretome [17]. However, the exact immunomodulatory mechanism is yet to be elaborated [17], [18], [19], [20].

The chronic inflammatory condition of the ocular surface results in a gradual loss of conjunctival goblet cells [13], [14], [20]. Our study revealed that topical instillation of RV preconditioned WJ-MSC secretome

successfully restored the goblet cell population compared to the control group. This result indicated a regenerative effect of WJ-MSC secretome on mucin-producing cells within conjunctival tissue, as shown with the improvement of TBUT. The anti-inflammatory effect of WJ-MSC secretome contributes to suppressing the chronic inflammatory process in the ocular surface, thus restores the goblet cell population and function. Moreover, MSC administered to a murine model of DED protected the ocular surface by suppressing CD4+ T-cell infiltration and decreasing levels of inflammatory cytokines such as IL-2 and IFN- γ [21], [22], [23], [24].

In severe DED, there is damage to the corneal surface [13], [14]. Topical instillations of RV preconditioned WJ-MSC secretome successfully promoted corneal epithelial regeneration in this study. It might be related to the high amount of EGF and HGF level contained in secretome derived from RV preconditioned WJ-MSC. EGF is a key factor for corneal epithelial regeneration, the crosstalk between EGF and HGF may facilitate epithelial regeneration by modulating the inflammatory response. Some studies showed the advancement of corneal wound healing after instillation of secretome derived from MSC. Its application may attenuate corneal inflammation by inhibiting the pro-inflammatory cytokines and infiltration of inflammatory cells [25], [26], [27]. The study described the effects of MSC secretome on ethanol induced-human corneal epithelial progenitor cells (hCEPs) injury, they found that MSC secretome enhanced survival, proliferation, and inhibited apoptosis of injured hCEPs [27]. A recent study reported significant improvement of corneal epithelial regeneration in the atropine-induced dry eye in rabbits after the administration of conditioned media derived from human uterine cervical epithelial stem cells (CM-hUCESC). Those studies showed that the corneal regenerative effect of stem cell conditioned media might be facilitated by decreasing corneal pro-inflammatory TNF- α , MCP-1, MIP-1 α , and IL-6 cytokines. In addition, secretome derived from hUCESC showed the regenerative and anti-apoptosis effect in corneal epithelial cells through a high level of metalloproteinase inhibitors TIMP-1 and TIMP-2 [27], [28].

Corneal neovascularization is the hallmark of disease severity in chronic inflammatory DED. The increasing of VEGF-A in aqueous tear plays a key role in this neovascularization. The level of VEGF-A in aqueous tear was found to be lower in RV preconditioned WJ-MSC secretome group compared to BSS control group. Moreover, we did not find any growth of new vessels in both of histological section and ocular surface. However, MSC has been shown to be good activators of angiogenesis and secretes VEGF as the most potent angiogenic factor [29], [30]. In this study, we successfully decreased VEGF-A secretion from WJ-MSC culture with supplementation of 0.1 μ M RV. Another study showed that intracameral injection of human amniotic (hAM)-MSC reduces

corneal neovascularization, opacity, and stromal infiltration of inflammatory cells [30]. Therefore, the effect of WJ-MSC secretome on the inhibition of corneal neovascularization need a longer time of observation and further exploration.

As limitation, we did not determine the exact mechanism of topical instillation of RV preconditioned WJ-MSC secretome that may contribute in the preservation ocular surface in experimental model of severe DED. However, our study may suggest the new insight to produce specific MSC secretome with low pro-angiogenic factor by supplementation of culture media with 0.1 μ M RV.

Conclusion

In conclusion, the study has revealed that Topical instillation of RV preconditioned WJ-MSC secretome has great potential as cell-free based therapy to preserved ocular surface in experimental model of severe DED. The challenge for further animal and clinical trial is to establish MSC culture conditions to produce safe, tolerable, and effective MSC secretome in eye drops preparation.

References

- Villatoro AJ, Fernández V, Claros S, Alcoholado C, Cifuentes M, Merayo-Lloves J, *et al.* Regenerative therapies in dry eye disease: From growth factors to cell therapy. *Int J Mol Sci.* 2017;18(11):2264. <https://doi.org/10.3390/ijms18112264> PMID:29143779
- Villatoro AJ, Fernández V, Claros S, Rico-Llanos GA, Becerra J, Andrades JA. Use of adipose-derived mesenchymal stem cells in keratoconjunctivitis sicca in a canine model. *Biomed Res Int.* 2015;2015:527926. <https://doi.org/10.1155/2015/527926> PMID:25802852
- Baradaran-Rafii A, Asl NS, Ebrahimi M, Jabbehdari S, Bamdad S, Roshandel D, *et al.* The role of amniotic membrane extract eye drop (AMEED) in *in vivo* cultivation of limbal stem cells. *Ocul Surf.* 2017;16(1):146-53. <https://doi.org/10.1016/j.jtos.2017.11.001> PMID:29104070
- Dudok DV, Nagdee I, Cheung K, Liu H, Vedovelli L, Ghinelli E, *et al.* Effects of amniotic membrane extract on primary human corneal epithelial and limbal cells. *Clin Exp Ophthalmol.* 2015;43(5):443-8. <https://doi.org/10.1111/ceo.12480> PMID:25495256
- Seong H, Ryu J, Jeong JY, Chung IY, Han YS, Hwang SH, *et al.* Resveratrol suppresses vascular endothelial growth factor secretion via inhibition of CXC-chemokine receptor 4 expression in ARPE-19 cells. *Mol Med Rep.* 2015;12(1):1479-84. <https://doi.org/10.3892/mmr.2015.3518> PMID:25815440
- Safaeinejad Z, Kazeminasab F, Kiani-Esfahani A, Ghaedi K, Nasr-Esfahani MH. Multi-effects of resveratrol on stem cell characteristics: Effective dose, time, cell culture conditions and cell type-specific responses of stem cells to resveratrol. *Eur J Med Chem.* 2018;155:651-7. <https://doi.org/10.1016/j.ejmech.2018.06.037> PMID:29935438
- Song JK, Lee K, Park HY, Hyon JY, Oh SW, Bae WK, *et al.* Efficacy of carboxymethylcellulose and hyaluronate in dry eye disease: A systematic review and meta-analysis. *Korean J Fam Med.* 2017;38(1):2-7. <https://doi.org/10.4082/kjfm.2017.38.1.2> PMID:28197326
- Aluri HS, Samizadeh M, Edman MC, Hawley DR, Armaos HL, Janga SR, *et al.* Delivery of bone marrow-derived mesenchymal stem cells improves tear production in a mouse model of Sjögren's syndrome. *Stem Cells Int.* 2017;2017:3134543. <https://doi.org/10.1155/2017/3134543> PMID:28348600
- Beyazyıldız E, Pınarlı FA, Beyazyıldız O, Hekimoğlu ER, Acar U, Demir MN. Efficacy of topical mesenchymal stem cell therapy in the treatment of experimental dry eye syndrome model. *Stem Cells Int.* 2014;2014:250230. <https://doi.org/10.1155/2014/250230> PMID:25136370
- Komarath E, Rindiastuti Y, Wirohadidjojo YW, Rantam FA, Dinariyati A, Lestari NM, *et al.* The resveratrol increase of hepatocyte growth factor (HGF) and epidermal growth factor (EGF) levels in wharton's jelly mesenchymal stem cells (WJ-MSCs) secretome: Toward cell free therapy in dry eye disease (DED). *Biochem Cell Arch.* 2019;19(2):1-7. <https://doi.org/10.1080/21691401.2020.1817057>
- Spees JL, Lee RH, Gregory CA. Mechanisms of mesenchymal stem/stromal cell function. *Stem Cell Res Ther.* 2016;7(1):125. <https://doi.org/10.1186/s13287-016-0363-7> PMID:27581859
- Sánchez-Abarca LI, Hernández-Galilea E, Lorenzo R, Herrero C, Velasco A, Carrancio S, *et al.* Human bone marrow stromal cells differentiate into corneal tissue and prevent ocular graft-versus-host disease in mice. *Cell Transplant.* 2015;24(12):2423-33. <https://doi.org/10.3727/096368915x687480> PMID:25695936
- Stevenson W, Chauhan SK, Dana R. Dry eye disease: An immune-mediated ocular surface disorder. *Arch Ophthalmol.* 2012;130(1):90-100. <https://doi.org/10.1001/archophthalmol.2011.364> PMID:22232476
- Bron AJ, De Paiva CS, Chauhan SK, Bonini S, Gabison EE, Jain S, *et al.* TFOS DEWS II pathophysiology report. *Ocul Surf.* 2017;15(3):438-510. <https://doi.org/10.1016/j.jtos.2019.08.007> PMID:28736340
- Lee MJ, Ko AY, Ko JH, Lee HJ, Kim MK, Wee WR, *et al.* Mesenchymal stem/stromal cells protect the ocular surface by suppressing inflammation in an experimental dry eye. *Mol Ther.* 2015;23(1):139-46. <https://doi.org/10.1038/mt.2014.159> PMID:25152016
- Bittencourt MK, Barros MA, Martins JF, Vasconcellos JP, Morais BP, Pompeia C, *et al.* Allogeneic mesenchymal stem cell transplantation in dogs with keratoconjunctivitis sicca. *Cell Med.* 2016;8(3):63-77. <https://doi.org/10.3727/215517916x693366> PMID:28003932
- Glenn JD, Whartenby KA. Mesenchymal stem cells: Emerging mechanisms of immunomodulation and therapy. *World J Stem Cells.* 2014;6(5):526-39. <https://doi.org/10.4252/wjcs.v6.i5.526> PMID:25426250
- Coulson-Thomas VJ, Coulson-Thomas YM, Gesteira TF,

- Kao WW. Extrinsic and intrinsic mechanisms by which mesenchymal stem cells suppress the immune system. *Ocul Surf.* 2016;14(2):121-34. <https://doi.org/10.1016/j.jtos.2015.11.004>
PMid:26804815
19. Su W, Wan Q, Huang J, Han L, Chen X, Chen G, *et al.* Culture medium from TNF- α -stimulated mesenchymal stem cells attenuates allergic conjunctivitis through multiple antiallergic mechanisms. *J Allergy Clin Immunol.* 2015;136(2):423-32. <https://doi.org/10.1016/j.jaci.2014.12.1926>
PMid:25652765
20. Stapleton F, Alves M, Bunya VY, Jalbert I, Lekhanont K, Malet F, *et al.* TFOS DEWS II epidemiology report. *Ocul Surf.* 2017;15(3):334-65. <https://doi.org/10.1016/j.jtos.2017.05.003>
PMid:28736337
21. Wen L, Zhu M, Madigan MC, King NJ, Billson FA, McClellan K, *et al.* Immunomodulatory effects of bone marrow-derived mesenchymal stem cells on pro-inflammatory cytokine-stimulated human corneal epithelial cells. *PLoS One.* 2014;9(7):e101841. <https://doi.org/10.1371/journal.pone.0101841>
PMid:25003339
22. Murri MS, Moshirfar M, Birdsong OC, Ronquillo Y, Ding Y, Hoopes PC. Amniotic membrane extract and eye drops: A review of literature and clinical application. *Clin Ophthalmol.* 2018;12:1105-23. <https://doi.org/10.2147/ophth.s165553>
PMid:29950805
23. Magaña-Guerrero FS, Domínguez-López A, Martínez-Aboytes P, Buentello-Volante B, Garfias Y. Human amniotic membrane mesenchymal stem cells inhibit neutrophil extracellular traps through TSG-6. *Sci Rep.* 2017;7(1):12426. <https://doi.org/10.1038/s41598-017-10962-2>
PMid:28963485
24. Javorkova E, Trosan P, Zajicova A, Krulova M, Hajkova M, Holan V. Modulation of the early inflammatory microenvironment in the alkali-burned eye by systemically administered interferon- γ -treated mesenchymal stromal cells. *Stem Cells Dev.* 2014;23(20):2490-500. <https://doi.org/10.1089/scd.2013.0568>
PMid:24849741
25. Bermudez MA, Sendon-Lago J, Eiro N, Treviño M, Gonzalez F, Yebra-Pimentel E, *et al.* Corneal epithelial wound healing and bactericidal effect of conditioned medium from human uterine cervical stem cells. *Invest Ophthalmol Vis Sci.* 2015;56(2):983-92. <https://doi.org/10.1167/iovs.14-15859>
PMid:25613942
26. Ljubimov AV, Saghizadeh M. Progress in corneal wound healing. *Prog Retin Eye Res.* 2015;49:17-45. <https://doi.org/10.1016/j.preteyeres.2015.07.002>
PMid:26197361
27. Oh JY, Ko JH, Kim MK, Wee WR. Effects of mesenchymal stem/stromal cells on cultures of corneal epithelial progenitor cells with ethanol injury. *Invest Ophthalmol Vis Sci.* 2014;55(11):7628-35. <https://doi.org/10.1167/iovs.14-15424>
PMid:25370509
28. Sendon-Lago J, Seoane S, Martinez-Ordóñez A, Eiro N, Saa J, Vizoso FJ, *et al.* Corneal regeneration by conditioned medium of human uterine cervical stem cells is mediated by TIMP-1 and TIMP-2. *Exp Eye Res.* 2019;180:110-21. <https://doi.org/10.1016/j.exer.2018.12.004>
PMid:30557571
29. Anderson JD, Johansson HJ, Graham, CS, Vesterlund M, Pham MT, Bramlett CS, *et al.* Comprehensive proteomic analysis of mesenchymal stem cell exosomes reveals modulation of angiogenesis via nuclear factor-kappaB signaling. *Stem Cells.* 2016;34(3):601-13. <https://doi.org/10.1002/stem.2298>
PMid:26782178
30. Navas A, Magana-Guerrero FS, Dominguez-Lopez A, Chavez-Garcia C, Partido G, Graue-Hernandez EO, *et al.* Anti-inflammatory and anti-fibrotic effects of human amniotic membrane mesenchymal stem cells and their potential in corneal repair. *Stem Cells Transl Med.* 2018;7(12):906-17. <https://doi.org/10.1002/sctm.18-0042>
PMid:30260581