

Molecular identification of
blaCTX-M and blaTEM genes
encoding extended-spectrum β -
lactamase (ESBL) producing
Escherichia coli isolated from
raw cow's milk in East Java,
Indonesia

by Hani Plumeriastuti

Submission date: 13-Jun-2023 10:32AM (UTC+0800)

Submission ID: 2114914969

File name: ia_coli_isolated_from_raw_cow_s_milk_in_East_Java,_Indonesia.pdf (525.61K)

Word count: 4312

Character count: 23468

Molecular identification of *bla*_{CTX-M} and *bla*_{TEM} genes encoding extended-spectrum β -lactamase (ESBL) producing *Escherichia coli* isolated from raw cow's milk in East Java, Indonesia

RIBBY ANSHARIETA¹, SANCAKA CHASYER RAMANDINIANTO¹, MUSTOFA HELMI EFFENDI^{2,3,*}, HANI PLUMERIA^{1,11} UTI⁴

¹Faculty of Veterinary Medicine, Universitas Airlangga, Jl. Raya Mulyorejo, Surabaya 60115, East Java, Indonesia

²Department of Veterinary Public Health, Faculty of Veterinary Medicine, Universitas Airlangga, Jl. Raya Mulyorejo, Surabaya 60115, East Java, Indonesia. Tel.: +62-31-5992785 ext. 5993111 *email: mheffendi@yahoo.com

³Halal Research Center, Universitas Airlangga, Jl. Raya Mulyorejo, Surabaya 60115, East Java, Indonesia

⁴Department of Veterinary Pathology, Faculty of Veterinary Medicine, Universitas Airlangga, Jl. Raya Mulyorejo, Surabaya 60115, East Java, Indonesia

Manuscript received: 5 December 2020. Revision accepted: 4 February 2021.

Abstract. Sharieta R, Ramandinianto SC, Effendi MH, Plumeriastuti H. 2021. Molecular identification of *bla*_{CTX-M} and *bla*_{TEM} genes encoding extended-spectrum β -lactamase (ESBL) producing *Escherichia coli* isolated from raw cow's milk in East Java, Indonesia. *Biodiversitas* 22: 1600-1605. The emergence of extended-spectrum β -lactamase (ESBL) producing bacteria and its increasing level has become public health issue. The presence of these bacteria in food of animal origin is quite alarming. The objective of this study was to detect and characterize *Escherichia coli* producing ESBL encoding genes, isolated from 200 raw cow milk samples in East Java, Indonesia. The results of this study showed that 70.5% of isolates were confirmed as *E. coli*, based on the morphological growth of colonies on the EMB Agar and biochemical IMViC tests. In this study, the double-disc synergy test (DDST) method was used to confirm the ESBL, and previously sorted out presumptively by using Aztreonam antibiotic disc. The antibiotics used were amoxicillin-clavulanate, ceftazidime, and cefotaxime for DDST. In addition, ESBL confirmation with Multiplex PCR method for *bla*_{CTX-M} and *bla*_{TEM} genes were done. The presence of ESBL-producing by *E. coli* isolated from raw cow's milk in East Java were 2.12% (3/141). The PCR results showed that the double *bla*_{CTX-M} and *bla*_{TEM} gene harbored by 2 ESBL isolates and one *bla*_{TEM} gene as many as 1 ESBL isolate. Thus, the findings of our study indicate that milk can be a good reservoir of bacteria carrying *bla*_{CTX-M} and *bla*_{TEM} ESBL resistance genes with the potential to affect human health.

Keywords: *bla*_{CTX-M} gene, *bla*_{TEM} gene, ESBL, *Escherichia coli*, human health, raw cow's milk

INTRODUCTION

Extended-spectrum β -lactamase (ESBL) producing bacteria are a major threat to public health today. The presence of ESBL bacteria is often caused by inappropriate use of antibiotics in handling infections and their irrational administration (Abayneh et al. 2018). *Escherichia coli* (*E. coli*) is a major pollutant in the environment which is often associated with ESBL encoding genes, namely *bla*_{CTX-M} and *bla*_{TEM} (Jena et al. 2017). Milk is a food source of animal origin that can act as a reservoir in transmitting infectious bacterial diseases. The presence of *E. coli* bacteria in raw milk is often reported with regard to sources of food-borne disease (Odenthal et al. 2016).

The prevalence of ESBL-producing *E. coli* in animal origin food products is very high (Geser et al. 2012; Wibisono et al. 2020a). The existence of livestock and livestock products such as milk can be a mode of transmission and circulation of ESBL producing bacteria and act as a potential new threat because they are directly related to the food chain in humans. Livestock and livestock products are one of the main sources of animal protein, including the most commonly consumed sources of meat and milk and being one of the main elements in the

food chain in humans. Livestock manure in the form of large-capacity feces has the potential to transmit bacterial infectious agents to humans through contamination. Most intestinal diseases in humans come from animals that are transmitted directly from animals to humans or indirectly through food of animal origin or water contaminated with feces (Widodo et al. 2020).

The distribution pattern of ESBL enzymes globally in humans and animals can be a reference and consideration efforts to prevent and treat ESBL bacterial infections. The type of CTX-M enzyme is a variant of the enzyme found in isolates from humans, animals and the environment. The CTX-M-15 strain has been widely reported on all continents and has been detected in all major ecological aspects including humans, animals and the environment. Treatment of ESBL-producing bacterial infections in clinical trials has rarely been successful (Widodo et al. 2020). This study aimed to detect the presence of ESBL-producing bacteria from dairy cows milk by double-disc synergy test (DDST) and molecular tests to identify the encoding *bla*_{CTX-M} and *bla*_{TEM} genes for ESBL producing *E. coli*.

MATERIALS AND METHODS

Research design, location and sampling

Raw milk was taken from dairy farm with a total of 200 samples, located in Probolinggo, Pasuruan, Batu, and Blitar districts, East Java Province, Indonesia, in the period between September 2019-January 2020. The farms selected to take as research samples have belonged to farmers who had an average of 3 to 5 cows. About 10 mL of milk sample from dairy cows milk was taken and placed in a sterile tube. Raw milk samples contained in wrapped sterile plastic were taken to the laboratory using a cool box container at 4°C.

Isolation and identification of *E. coli*

Each 100 µL milk sample was cultured into 10 mL enrichment media of Brilliant Green Bile Lactose Broth (Merck, 105454) and incubated at 37 °C for 18-24 hours. The positive results are characterized by change in media from green color to cloudy green and presence of gas in Durham tube (Putra et al. 2019). Then 100 µL of the resulted samples were streaked onto Eosin Methylene Blue (EMB) agar (Merck, 101347) and incubated at 37 °C for 18-24 hours (Effendi et al. 2018). Presumptive 3-5 colonies of *E. coli* that showed metallic green color was purified and continued to identification with the IMViC test (Wibisono et al. 2020b).

Antibiotic sensitivity test

Antibiotic sensitivity testing was done using Kirby-Bauer disc diffusion assay on Mueller-Hinton agar medium (Oxoid, CM0337). Firstly, screened for presumptive ESBL using Aztreonam and other antibiotic discs for checking the multidrug resistance profile. Antibiotics discs used were Tetracycline 30 µg (Oxoid, CT0054), Streptomycin 10 µg (Oxoid, CT0047), Chloramphenicol 30 µg (Oxoid, CT0013), Trimethoprim 5 µg (Oxoid, CT0057), Aztreonam 30 µg (Oxoid, CToid02). Antibiotics discs used for Double Disc Synergy Test (DDST) were Amoxicillin-Clavulanate

20/10 µg (Oxoid, CT0223B), Cefotaxime 30 µg (Oxoid, 0166), Ceftazidime 30 µg (Oxoid, CT0412). Interpretation of results was done by measuring the diameter of the inhibitory zone formed, after overnight incubation at 37 °C, based on Clinical and Laboratory Standards Institutions (CLSI 2018, Putra et al. 2020).

Preparation for polymerase chain reaction

The initial step of DNA extraction from bacterial culture was referred to Kristianingtyas et al. (2020) and tested by specific primers for the *bla*_{CTX-M} and *bla*_{TEM} genes (Table 1) as described in Ali et al. (2016), with slight modifications in cycling conditions. Taq DNA polymerase enzyme, deoxyribonucleotide triphosphates and buffers used in the PCR mixture were obtained from Thermo Fisher Scientific Inc. (Massachusetts, USA). Thermocycling reaction was conducted for initial denaturation at 94°C for 2 minutes followed by 30 cycles of: denaturation at 94°C for 1 minute, annealing for 52°C for 30 sec, extended at 72°C at 45 sec, and finally extension at 72°C for 5 minutes. PCR products were visualized in mini gel electrophoresis and documented in the UV Reader/ Gel Documentation System.

RESULTS AND DISCUSSION

Isolation and identification of *Escherichia coli*

The results of the isolation and identification of 200 raw milk samples obtained as many as 200 (100%) isolate suspected of *E. coli* on the basis of macroscopic characters, on the Brilliant Green Lactose Broth medium, the color is cloudy green and all of them cause gas in the Durham tube after incubation at 37°C for 24 hours. A total of 141 (70.5%) samples on EMB Agar medium with two times purification showed the growth of convex colonies in metallic green with a round black center (Figure 1) after incubation at 37°C for 24 hours, can be seen in Table 2.

Table 1. Details of primers used in this study

Primers	Sequences (5' to 3')	Target gene	Amplicons size	References
CTX-MA	CGC TTT GCG ATG TGC AG	<i>bla</i> _{CTX-M}	550-bp	Villegas et al. (2004)
CTX-MB	C GCG ATA TCG TTG GT			
TEM-F	ATA AAA TTC TTG AAG ACG AAA	<i>bla</i> _{TEM}	1086-bp	Yao et al. (2007)
TEM-R	GAC AGT TAC CAA TGC TTA ATC			

Table 2. Results for detection multidrug-resistant (MDR) and ESBL producing *Escherichia coli*

Location	Sample size	Confirmed <i>E. coli</i>	Multidrug-resistant	Presumptive ESBL (Aztreonam disc)	DDST positive	<i>bla</i> _{CTX-M} gene	<i>bla</i> _{TEM} gene
Probolinggo (A)	50	36	2	0	0	0	0
Pasuruan (G)	50	30	4	1	1	1	1
Batu (H)	50	37	6	0	0	0	0
Blitar (S)	50	38	2	2	1	1	2
Total	200	141	14	3	2	2	3

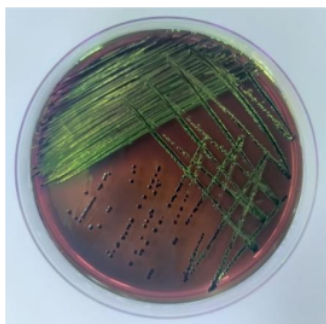


Figure 1. EMBA with *Escherichia coli* colonies in metallic green

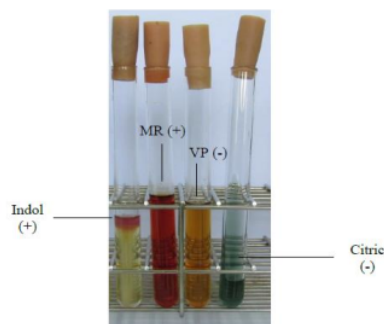


Figure 2. Positive biochemical test for *Escherichia coli*

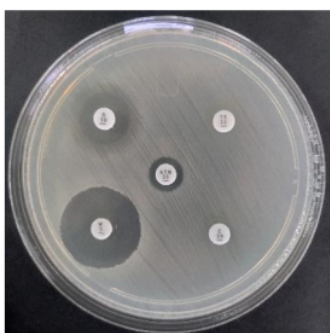


Figure 3. Sample code of S-25 showed Aztreonam resistant isolate as presumptive ESBL

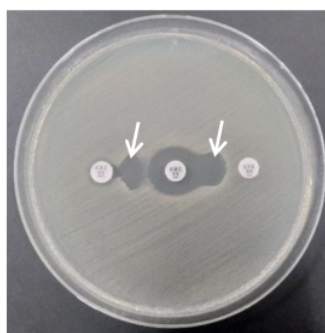


Figure 4. Sample code of S-25 DDST positive result (white arrow shows positive synergy)

Gram staining was performed and stained bacterial smear was viewed under a microscope with a magnification of 1000x. to ensure that the bacteria are Gram-negative rod-shaped bacteria. Microscopically, *E. coli* bacterial cells appeared in the form of short rods and were red in Gram stain. The next test was a biochemical test with IMViC and then incubated at 37 °C for 24 hours. Isolates used for the IMViC test came from separate colonies on EMBA media. It was found that 141(70.5%) isolates tested positive for *E. coli*. Isolates were stated as *E. coli* with negative Sulphide test results, positive indole, positive motile, positive MR, negative VP, and negative citrate (Figure 2).

The study has been carried out on 200 milk samples obtained from Probolinggo, Pasuruan, Batu, and Blitar, showed that 70.5% were contaminated with *E. coli* bacteria. From each area, *E. coli* bacteria were found which were multidrug-resistant to various antibiotics that had been tested (Table 2 and Table 3), and shown in Figure 3.

Identification for bla_{CTX-M} and bla_{TEM} Genes in ESBL-Producing *E. coli*

A total of two ESBL producer isolates showed the presence of 'keyhole' in DDST testing (Figure 4.) The three isolates were tested by multiplex PCR method to find out

encoded ESBL genes. The two positive DDST isolates produced 2 double bands for the bla_{CTX-M} and bla_{TEM} genes. Whereas, one negative DDST isolate gave 1 single band for bla_{TEM}, due to resistant to Aztreonam (Figure 5).

Discussion

Based on this study, antibiotics Trimethoprim, Chloramphenicol, and Aztreonam may still be used to treat multidrug-resistant (MDR) bacteria found because there are still some MDR of *E. coli* isolates that are sensitive to it. Trimethoprim is usually combined with sulfonamides which work synergistically with a broad spectrum of activities. Chloramphenicol is also a broad-spectrum antibiotic. In the case of urinary tract infections, Trimethoprim is proven to be effective in killing infections caused by *E. coli* bacteria (AlRabiah et al. 2018), while in the case of gastrointestinal tract and reproductive tract infections due to *E. coli*, Chloramphenicol is a good antibiotic (Santos et al. 2010). The antibiotic monobactam (Aztreonam) is rarely used in veterinary practice and human medicine today (Kennedy et al. 2015). The discovery of isolates that are resistant to Aztreonam, increases the possibility of finding the ESBL of *E. coli* bacteria in raw milk.

Table 3. Detail samples of MDR and ESBL of *Escherichia coli* isolates

Sample code	Resistant to					Multidrug resistant (MDR)	ESBL producer
	TE 30 µg	S 10 µg	W 5 µg	C 30 µg	ATM 30 µg		
A-26	+	+	+	+	-	+	-
A-44	-	+	+	+	-	+	-
G-12	+	+	+	-	-	+	-
G-31	-	+	+	-	+	+	+
G-35	+	+	+	-	-	+	-
G-43	+	+	-	+	-	+	-
H-11	+	+	+	+	-	+	-
H-15	+	+	+	-	-	+	-
H-28	+	+	-	+	-	+	-
H-37	+	+	-	+	-	+	-
H-44	+	+	-	+	-	+	-
H-45	+	+	-	+	-	+	-
S-25	+	-	-	+	+	+	+
S-38	-	+	-	-	+	-	+

Note: TE: Tetracycline, S: Streptomycin, W: Trimethoprim, C: Chloramphenicol, ATM: Aztreonam, MDR is resistant to three or more classes, ESBL producer is resistant to ATM, +: positive resistant

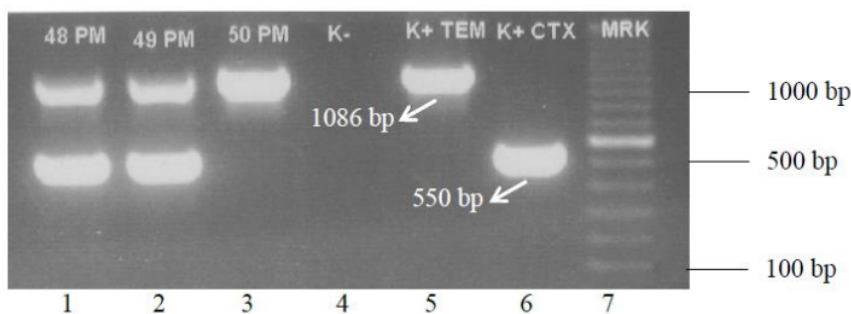


Figure 5. Electrophoresis result for 2 ESBL producer isolates and one contain blaTEM Isolate with negative DDST. Lane 1: G-31 (From Pasuruan), 2: S-25 (From Blitar), 3: S-38 (From Blitar), 4: Negative Control, 5: Positive Control for blaTEM gene, 6: Positive Control for blaCTX-M gene, 7: Marker

The occurrence of antibiotic resistance is known to originate from bacterial plasmids that are able to accommodate resistance genes and spread them to other bacteria (Ramírez-Castillo et al. 2018). Various resistance genes can accumulate in bacterial plasmids, usually in R (resistant) plasmids which is the reason for finding bacterial isolates that are resistant to various kinds of antibiotics and are able to create new gene sequences (Nikaido 2009).

Multidrug-resistant *E. coli* isolates are very common in many countries and are responsible for a series of infections with high severity and difficulty to treat. In Canada, a study of cases of urinary tract infection due to *E. coli* bacteria, 60% of which were the cases of *E. coli* infection with resistance to more than 3 classes of antibiotics. Consumption of food from raw undercooked animals, travel habits between regions, and contact with reservoir animals are associated with an increased risk of

urinary tract infections caused by MDR of *E. coli* (Ukah et al. 2017).

Escherichia coli is a bacterium that can be a reservoir of various antibiotic resistance genes, including genes encoding beta-lactam resistance β-lactamase encoding genes (Effendi et al. 2021). ESBLs enzymes are produced several strains belonging to the Enterobacteriaceae family. They can hydrolyze penicillin and third-generation cephalosporins, monobactams, and other antibiotics, except carbapenems (meropenem, imipenem, and ertapenem) (Pitout 2012). These enzymes are mainly encoded by several specific genes, namely the bla_{SHV}, bla_{CTX-M} and bla_{TEM} genes (Bush 2013, Wibisono et al. 2020).

The presence of bla_{CTX-M} and bla_{TEM} genes is often reported in food of animal origin. In this study, the findings of ESBL producing *E. coli* isolates were dominated by the bla_{TEM} gene. Similar to the research of Hinthong et al. (2017) stated that *E. coli* contamination found in milk from

dairy farms tends to find the bla_{TEM} gene in ESBL-producing *E. coli* bacteria. This showed that pathogenic *E. coli* sourced from milk is also exposed to antibiotics and has the potential to transfer these genes to other pathogenic bacteria under certain conditions (Effendi et al. 2019; Rahmahani et al. 2020). This study was detected ESBL and bla_{CTX-M} gene in milk since it is rarely reported worldwide to find ESBL in milk. ESBL is mainly reported in feces of poultry and porcine (Wibisono et al. 2020c). The presence of ESBL bacteria is quite dangerous if found in food of animal origin. ESBL-producing *E. coli* strains obtained from cow's milk samples are of particular concern because these pathogens can affect human consumers and calves and lead to the spread of these antibiotic-resistant pathogens to humans and animals (Batabyal et al. 2018).

In dairy cows during lactation, ESBL producing *E. coli* can also be found in raw milk with and without symptoms of mastitis, this indicates that the cleanliness of the cage that contaminates milk cages is also a risk factor for contamination of ESBL producing *E. coli* into raw milk products. (Su et al. 2014). In cases of mastitis due to infection with ESBL-producing *E. coli* bacteria infection, it is often associated with several antibiotics that have also been inactive against the bacteria causing it, making it difficult to find other replacement antibiotics to treat it (Ali et al. 2016).

Many sources of exposure have the potential to transmit ESBL-producing *E. coli*, making epidemiological investigations extremely difficult. Interactions at the microbial level in humans and animals, especially between commensal bacteria and pathogenic bacteria, facultative bacteria and obligate bacteria in the same environment and horizontal gene transfer from bacteria make the distribution of ESBL encoding genes between various bacterial species becomes wider. In order to understand and identify the possibility of preventing the spread of the ESBL encoding genes and infection in humans, an integrative approach such as 'One Health' is required (Calistri et al. 2013). The application of the concept of One Health integration is assumed to accelerate disease prevention and prediction as an effort to control ESBL-producing *E. coli* (Wendt et al. 2014).

Food-borne diseases are a major concern throughout the world. This is an important problem in developing countries that lack the application of high sanitation management during the collection and processing of cow's milk. *E. coli* contamination found in raw milk may be caused by cross-contamination of milk with impurities or the lack of hygienic measures during milk collection and processing (Tanzin et al. 2016). According to Ukah et al. (2017), one of the factors causing the occurrence of antibiotic resistance in humans is due to consuming food of animal origin in raw or undercooked form. A multi-sectoral approach to medical treatment in the field of veterinary medicine, animal food production, can realize global cooperation in controlling the ecological development of antibiotic-resistant *E. coli*, for public health (Landers et al. 2012).

In conclusion, molecular identification showed the bla_{CTX-M} gene found in raw cow milk collected from several

regions in East Java, Indonesia which was used to identify ESBL producing *E. coli*, and the bla_{TEM} for molecular identification of penicillinase-producing *E. coli*. These results showed that ESBL producing *E. coli* from raw cow's milk has a relatively low prevalence. However, ESBL producing *E. coli* showed the potential for spreading and poses a threat to public health from *E. coli* isolates.

ACKNOWLEDGEMENTS

This research was in part funded by the Direktorat Riset dan Pengabdian Masyarakat, Deputy Bidang Penguatan Riset dan Pengembangan Kementerian Riset dan Teknologi/ Badan Riset dan Inovasi Nasional, Indonesia in fiscal year 2020 with grant number : 756/UN3.14/PT/2020.

REFERENCES

- Abayneh M, Tesfaw G, Abdissa A. 2018. Isolation of extended-spectrum β -lactamase-(ESBL-) producing *Escherichia coli* and *Klebsiella pneumoniae* from patients with community-onset urinary tract infections in Jimma University Specialized Hospital, Southwest Ethiopia. *Can J Infect Dis Med Microbiol* 2018:4846159. DOI: 10.1155/2018/4846159.
- AlRabiah H, Allwood JW, Correa E, Xu Y, Goodacre R. 2018. pH plays a role in the mode of action of trimethoprim on *Escherichia coli*. *PLoS One* 13 (7): e0200272. DOI: 10.1371/journal.pone.0200272.
- Ali T, Rahman S, Zhang L, Shahid M, Zhang S, Liu G, Gao J, Han B. 2016. ESBL producing *Escherichia coli* from cows suffering mastitis in China contain clinical class 1 integrons with CTX-M linked to ISCR1. *Front Microbiol* 7:1931. DOI: 10.3389/fmicb.2016.01931.
- Batabyal K, Banerjee A, Pal S, Dey S, Joardar SN, Samanta I, Isore DP, Singh AD. 2018. Detection, characterization, and antibiogram of extended-spectrum beta-lactamase *Escherichia coli* isolated from bovine milk samples in West Bengal, India. *Vet World* 11 (10): 1423-1427. DOI: 10.14202/vetworld.2018.1423-1427.
- Bush K. 2013. Proliferation and significance of clinically relevant β -lactamases. *Ann N Y Acad Sci* 1277: 84-90. DOI: 10.1111/nyas.12023.
- Calistri P, Iannetti S, Danzetta L, Narcisi M, Cito V, Di Sabatino F. 2013. The components of 'One World-One Health' approach. *Transbound Emerg Dis* 60 (2): 4-13. DOI: 10.1111/tbed.12145.
- Clinical and Laboratory Standards Institute [CLSI]. 2018. M100 Performance Standards for Antimicrobial Susceptibility Testing 28th ed. Clinical and Laboratory Standards Institute, USA.
- Effendi MH, Harijani N, Budiarto, Triningtya NP, Tyasningsih W, Plumeriastuti H. 2019. Prevalence of pathogenic *Escherichia coli* isolated from subclinical mastitis in East Java Province, Indonesia. *Indian Vet J* 96 (3): 22-25.
- Effendi MH, Harijani N, Yanestria SM, Hastutiek P. 2018. Identification of shiga toxin-producing *Escherichia coli* in raw milk samples from dairy cows in Surabaya, Indonesia. *Philipp J Vet Med* 55 (S1): 109-114.
- Effendi MH, Tyasningsih W, Yurianti YA, Rahmahani J, Harijani N, Plumeriastuti H. 2021. Presence of multidrug resistance (MDR) and extended-spectrum beta-lactamase (ESBL) of *Escherichia coli* isolated from cloacal swabs of broilers in several wet markets in Surabaya, Indonesia. *Biodiversitas* 22 (1): 304-310. DOI: 10.13057/biodiv/d220137.
- Geser N, Stephan R., Hächler H. 2012. Occurrence and characteristics of extended-spectrum β -lactamase (ESBL) producing Enterobacteriaceae in food-producing animals, minced meat and raw milk. *BMC Vet Res* 8: 21. DOI: 10.1186/1746-6148-8-21.
- Hinthong W, Pumipuntu N, Santajit S, Kulpeanprasit S, Buranasinsup S, Sookkrung N, Chaicumpra W, Aiumurai P, Indrawattana N. 2017. Detection and drug resistance profile of *Escherichia coli* from subclinical mastitis cows and water supply in dairy farms in Saraburi Province, Thailand. *PeerJ* 5: e3431. DOI: 10.7717/peerj.3431.

- Jena J, Sahoo RK, Debata NK, Subudhi E. 2017. Prevalence of TEM, SHV, and CTX-M genes of extended-spectrum β -Lactamase-producing *Escherichia coli* strain isolated from urinary tract infections in adults. *3 Biotech* 7 (4): 244. DOI: 10.1007/s13205-017-0879-2.
- Kennedy H, Wilson S, Marwick C, Malcolm W, Nathwani D. 2015. Reduction in broad-spectrum Gram-negative agents by diverse prescribing of aztreonam within NHS Tayside. *J Antimicrob Chemother* 70 (8): 2421-2423. DOI: 10.1093/jac/dkv127.
- Kristianingtyas L, Effendi MH, Tyasningsih W, Kurniawan F. 2020. Genetic identification of bla_{CTXM} Gene and bla_{TEM} gene on extended-spectrum beta-lactamase (ESBL) producing *Escherichia coli* from dogs. *Indian Vet J* 97 (1): 17-21.
- Landers TF, Cohen B, Witum TE, Larson EL. 2012. A review of zoonotic use in food animals: Perspective, policy, and potential. *Public Health Rep* 127 (1): 4-22. DOI: 10.1177/003335491212700103.
- Nikaido H. 2009. Multidrug resistance in bacteria. *Annu Rev Biochem* 78: 119-146. DOI: 10.1146/annurev.biochem.78.082907.145923
- Odenthal S, Akineden Ö, Usleber E. 2016. Extended-spectrum β -lactamase producing Enterobacteriaceae in bulk tank milk from German dairy farms. *Int J Food Microbiol* 238: 72-78. DOI: 10.1016/j.jfoodmicro.2016.08.036.
- Pitout JDD. 2012. Extraintestinal pathogenic *Escherichia coli*: A combination of virulence with antibiotic resistance. *Front Microbiol* 3: 9. DOI: 10.3389/fmicb.2012.00009.
- Putra AR, Effendi MH, Koesdarto S, Suwarno S, Tyasningsih W, Estoepangestie AT. 2020. Detection of the extended-spectrum β -lactamase produced by *Escherichia coli* from dairy cows by using the Vitek-2 method in Tulungagung regency, Indonesia. *Iraqi J Vet Sci* 34 (1): 203-207. DOI: 10.33899/ijvs.2019.125707.1134.
- Putra ARS, Effendi MH, Koesdarto S, Tyasningsih W. 2019. Molecular identification of extended-spectrum beta-lactamase (ESBL) producing *Escherichia coli* isolated from dairy cows in East Java Province, Indonesia. *Indian Vet J* 96 (10): 26-30.
- Rahmahani J, Salamah, Mufasirin, Tyasningsih W Effendi MH. 2020. Antimicrobial resistance profile of *Escherichia coli* from cloacal swab of domestic chicken in Surabaya traditional market. *Biochem Cell Arch* 20 (1): 2993-2997. DOI: 10.35124/bca.2020.20.S1.2993.
- Ramirez-Castillo FY, Moreno-Flores AC, Avelar-González FJ, Márquez-Díaz F, Harel J, Guerrero-Barrera AL. 2018. An evaluation of multidrug-resistant *Escherichia coli* isolates in urinary tract infections from Aguascalientes, Mexico: Cross-sectional study. *Ann Clin Microbiol Antimicrob* 17 (1): 34. DOI: 10.1186/s12941-018-0286-5.
- Santos TMA, Gilbert RO, Caixeta LS, Machado VS, Teixeira LM, Bicalho RC. 2010. Susceptibility of *Escherichia coli* isolated from uteri of postpartum dairy cows to antibiotic and environmental Bacteriophages. Part II: in vitro antimicrobial activity evaluation of a bacteriophage cocktail and several antibiotics. *J Dairy Sci* 93 (1): 105-114. DOI: 10.3168/jds.2009-2299.
- Su Y, Yu CY, Tsai Y, Wang SH, Lee C, Chu C. 2016. Fluoroquinolone resistant and extended-spectrum β -lactamase (ESBL)-producing *Escherichia coli* from milk of cow with clinic mastitis in Southern Taiwan. *J Microbiol Immunol Infect* 49 (6): 892-901. DOI: 10.1016/j.jmii.2014.10.003.
- Tanzin T, Nazir KHMNH, Zahan MN, Parvej SM, Zesmin K, Rahman MT. 2016. Antibiotic resistance profile of bacteria isolated from raw milk samples of cattle and buffaloes. *J Adv Vet Anim Res* 3 (1): 62-67. DOI: 10.5455/javar.2016.c133.
- Ukah UV, Glass M, Avery B, Daignault D, Mulvey MR, Reid-Smith RJ, Parmley EJ, Portt A, Boerlin P, Manges AR. 2017. Risk factors for acquisition of multidrug-resistant *Escherichia coli* and development of community-acquired urinary tract infections. *Epidemiol Infect* 146 (1): 46-57. DOI: 10.1017/S0950268817002680.
- Villegas MV, Correa A, Perez F, Zuluaga T, Radice M, Gutkind G. 2004. CTX-M-12 Beta-Lactamase in a *Klebsiella pneumoniae* clinical isolate in Colombia. *Antimicrob Agents Chemother* 48 (2): 629-631. DOI: 10.1128/aac.48.2.629-631.2004.
- Wendt A, Kreienbrock L, Campe A. 2015. Zoonotic disease surveillance-inventory of systems integrating human and animal disease information. *Zoonoses Public Health* 62 (1): 61-74. DOI: 10.1111/zph.12120.
- Wibisono FJ, Sumiarto B, Untari T, Effendi MH, Permatasari DA, Witaningrum AM. 2020a. The presence of extended-spectrum beta-lactamase (ESBL) producing *Escherichia coli* on layer chicken farms in Blitar area, Indonesia. *Biodiversitas* 21 (6): 2667-2671. DOI: 10.13057/biodiv/d210638.
- Wibisono FJ, Sumiarto B, Untari T, Effendi MH, Permatasari DA, Witaningrum AM. 2020b. CTX gene of extended-spectrum beta-lactamase (ESBL) producing *Escherichia coli* on broilers in Blitar, Indonesia. *Sys Rev Pharm* 11 (7): 396-403. DOI: 10.31838/srp.2020.7.59.
- Wibisono FJ, Sumiarto B, Untari T, Effendi MH, Permatasari DA, Witaningrum AM. 2020c. Pattern of antibiotic resistance on extended-spectrum beta-lactamases genes producing *Escherichia coli* on laying hens in Blitar, Indonesia. *Biodiversitas* 21 (10): 4631-4635. DOI: 10.13057/biodiv/d211022.
- Widodo A, Effendi MH, Khairullah AR. 2020. Extended-spectrum beta-lactamase (ESBL)-producing *Escherichia coli* from livestock. *Sys Rev Pharm* 11 (7): 382-392.
- Yao F, Qian Y, Chen S, Wang P, Huang Y. 2007. Incidence of extended-spectrum beta-lactamases and characterization of integrons in extended-spectrum beta-lactamase producing *Klebsiella pneumoniae* isolated in Shantou, China. *Acta Biochim Biophys Sin (Shanghai)* 39 (7): 527-532. DOI: 10.1111/j.1745-7270.2007.00304.x.

Molecular identification of blaCTX-M and blaTEM genes encoding extended-spectrum β -lactamase (ESBL) producing Escherichia coli isolated from raw cow's milk in East Java, Indonesia

ORIGINALITY REPORT

14%

SIMILARITY INDEX

9%

INTERNET SOURCES

12%

PUBLICATIONS

0%

STUDENT PAPERS

PRIMARY SOURCES

- | | | |
|---|---|----|
| 1 | catalogo.ceu.es
Internet Source | 1% |
| 2 | link.springer.com
Internet Source | 1% |
| 3 | waikato.researchgateway.ac.nz
Internet Source | 1% |
| 4 | Rina Kurniati, Wakhidah Kurniawati, Diah Intan Kusumo Dewi, Annisa Sarasadi, Endah Kartika Syahri. "Comfortable Pedestrian Ways With a Climate Sensitive Urban Design Approach in The Old City Semarang", E3S Web of Conferences, 2020
Publication | 1% |
| 5 | Mirzan Hasibuan, Dwi Suryanto, R Lia Kusumawati. " Phenotypic and molecular detection of CTX-M gene extended-spectrum beta-lactamases in and of north sumatera | 1% |

isolates ", IOP Conference Series: Earth and Environmental Science, 2018

Publication

6

www.hindawi.com

Internet Source

1 %

7

Mohammad Javad Gharavi, Javad Zarei, Parisa Roshani-Asl, Zahra Yazdanyar, Masoud Sharif, Niloufar Rashidi. "Comprehensive study of antimicrobial susceptibility pattern and extended spectrum beta-lactamase (ESBL) prevalence in bacteria isolated from urine samples", Scientific Reports, 2021

Publication

1 %

8

Recep Kara, Mukadderat Gokmen, Levent Akkaya, Veli Gok. "Microbiological Quality and Salmonella spp., /Listeria monocytogenes of Spices in Turkey", Research Journal of Microbiology, 2015

Publication

1 %

9

Valentin, Lars, Hannah Sharp, Katja Hille, Uwe Seibt, Jennie Fischer, Yvonne Pfeifer, Geovana Brenner Michael, Silke Nickel, Judith Schmiedel, Linda Falgenhauer, Anika Friese, Rolf Bauerfeind, Uwe Roesler, Can Imirzalioglu, Trinad Chakraborty, Reiner Helmuth, Giuseppe Valenza, Guido Werner, Stefan Schwarz, Beatriz Guerra, Bernd Appel, Lothar Kreienbrock, and Annemarie

1 %

Käsbohrer. "Subgrouping of ESBL-producing Escherichia coli from animal and human sources: An approach to quantify the distribution of ESBL types between different reservoirs", International Journal of Medical Microbiology, 2014.

Publication

10

academic.oup.com

Internet Source

1 %

11

One Asmarani, Artati Dian Pertiwi, Ni Nyoman Tri Puspaningsih. "Application of enzyme cocktails from Indonesian isolates to corncob (Zea mays) waste saccharification", Biocatalysis and Agricultural Biotechnology, 2020

Publication

<1 %

12

jcdr.in

Internet Source

<1 %

13

www.cambridge.org

Internet Source

<1 %

14

Sneha Girijan Kalasseril, Devika Pillai. "Genetic diversity and prevalence of extended-spectrum beta-lactamase-producing and in aquatic environments receiving untreated hospital effluents ", Journal of Water and Health, 2022

Publication

<1 %

15

usab-tm.ro

Internet Source

<1 %

16

Kaotar Nayme, Abouddihaj Barguigua, Brahim Bouchrif, Idrissa Diawara et al. " Occurrence of extended-spectrum -lactamase, AmpC and virulence genes in isolates from vegetable salads in Morocco ", British Food Journal, 2017

Publication

<1 %

17

Mengistu Abayneh, Teshale Worku. "Prevalence of multidrug-resistant and extended-spectrum beta-lactamase (ESBL)-producing gram-negative bacilli: A meta-analysis report in Ethiopia", Drug Target Insights, 2020

Publication

<1 %

18

Murat Duman, Hakan Abacioglu, Meral Karaman, Nuray Duman, Hasan Ozkan. "beta-lactam antibiotic resistance in aerobic commensal fecal flora of newborns", Pediatrics International, 2005

Publication

<1 %

19

U. V. UKAH, M. GLASS, B. AVERY, D. DAIGNAULT, M. R. MULVEY, R. J. REID-SMITH, E. J. PARMLEY, A. PORTT, P. BOERLIN, A. R. MANGES. " Risk factors for acquisition of multidrug-resistant and development of community-acquired urinary tract infections ", Epidemiology and Infection, 2017

<1 %

20

d-nb.info

Internet Source

<1 %

21

www.pomics.com

Internet Source

<1 %

22

"Probiotics and Prebiotics in Animal Health and Food Safety", Springer Science and Business Media LLC, 2018

Publication

<1 %

23

Johann DD Pitout. " Extraintestinal pathogenic : an update on antimicrobial resistance, laboratory diagnosis and treatment ", Expert Review of Anti-infective Therapy, 2014

Publication

<1 %

24

M. Ali, M. Ikram, M. Ijaz, A. Ul-Hamid, M. Avais, A. A. Anjum. "Green synthesis and evaluation of n-type ZnO nanoparticles doped with plant extract for use as alternative antibacterials", Applied Nanoscience, 2020

Publication

<1 %

25

dev.nlk.cz

Internet Source

<1 %

26

royalsocietypublishing.org

Internet Source

<1 %

27

worldwidescience.org

Internet Source

<1 %

28

ww4.islandscholar.ca

Internet Source

<1 %

29

www.biorxiv.org

Internet Source

<1 %

30

Christine F. Najjuka, David P. Kateete, Henry M. Kajumbula, Moses L. Joloba, Sabiha Y. Essack. "Antimicrobial susceptibility profiles of *Escherichia coli* and *Klebsiella pneumoniae* isolated from outpatients in urban and rural districts of Uganda", *BMC Research Notes*, 2016

Publication

<1 %

31

Edwin Meinardi Trianto, Novi Tri Hariyanti. "Pengembangan Media Interaktif Augmented Reality Berbasis Android Dalam Pengenalan Jenis Minuman Kopi", *Teknika*, 2020

Publication

<1 %

32

Jessica Ribeiro, Vanessa Silva, Andreia Monteiro, Madalena Vieira-Pinto et al. "Antibiotic Resistance among Gastrointestinal Bacteria in Broilers: A Review Focused on *Enterococcus* spp. and *Escherichia coli*", *Animals*, 2023

Publication

<1 %

33

Antimicrobial Resistance in Developing Countries, 2010.

Publication

<1 %

Exclude quotes Off

Exclude matches Off

Exclude bibliography On

Molecular identification of blaCTX-M and blaTEM genes encoding extended-spectrum β -lactamase (ESBL) producing Escherichia coli isolated from raw cow's milk in East Java, Indonesia

GRADEMARK REPORT

FINAL GRADE

/0

GENERAL COMMENTS

Instructor

PAGE 1

PAGE 2

PAGE 3

PAGE 4

PAGE 5

PAGE 6
