

[Phcogj.com](http://Phcogj.com)



# Editorial Board (2020-21)

## Editors & Editorial Board Members (2021)

### **Dr.Djemli Samir**

Department of Biology , Applied Neuroendocrinology Laboratory  
Badji Mokhtar Annaba University  
Algeria

### **Dr. Raghava Naidu, Ph.D**

Department of Human Oncology,  
University of Wisconsin,  
1111, Highland Ave, Madison,  
Wisconsin 53705, USA

### **Dr.Karim Raafat**

Associate Professor of Pharmacognosy and Phytochemistry,  
Pharmaceutical Sciences Department,  
Faculty of Pharmacy,  
Beirut Arab University (BAU),  
Beirut 115020, Lebanon

**Ourlad Alzeus Tantengco, MD-PhD Molecular Medicine**

College of Medicine, University of the Philippines Manila  
Pedro Gil Street, Ermita, Manila, Philippines, 1000

**Janib Achmad**

Lecturer of Faculty of Fisheries and Marine Science,  
University of Khairun Ternate  
Kampus 2 Jalan Pertamina, Kelurahan Gambesi,  
Ternate Selatan

**Muammar Fawwaz, Ph.D**

Department of Pharmaceutical Chemistry  
Faculty of Pharmacy  
Universitas Muslim Indonesia  
Makassar 90231, South Sulawesi, Indonesia

**Hany Ezzat Khalil**

Associate Professor,  
College of Clinical Pharmacy,  
King Faisal University,  
KSA

**Emad Yousif**

Department of Chemistry  
College of Science  
Al-Nahrain University  
Baghdad, Iraq

**Sughosh Upasani**

R.C Patel Institute of pharmacy,  
Shirpur,Dist-Dhule,Maharashtra,  
India.

**Gurusiddaiah suresh kumar**

Scientist  
Dept of biochemistry  
CSIR-CFTRI  
Mysore, Karnataka, INDIA

**Arjun Patra**

Assistant Professor  
School of Pharmaceutical Sciences  
Guru Ghasidas Central University  
Koni, Bilaspur - 495 009  
Chattisgarh, India

**Francis O. Atanu, Ph.D**

Department of Biochemistry  
Faculty of Natural Sciences  
Kogi State University  
Anyigba, Nigeria.

**Vijay Kumar Chattu**

Faculty of Medical Sciences  
University of the West Indies  
St. Augustine, Trinidad & Tobago.

**Dr.Kunle Okaiyeto, PhD**

Applied and Environmental Microbiology Research Group (AEMREG)

Department of Biochemistry and Microbiology

University of Fort Hare

Alice campus

5700, Alice

South Africa.

**Dr. Srisailam Keshetti, Ph.D**

Principal, University College of Pharmaceutical Sciences, Satavahana University

Karimnagar 505001

Telangana

INDIA

**Dr. Gayathri M Rao**

Associate Professor

Department of Biochemistry

Kasturba Medical College, Mangaluru.

**Shuge Tian**

Experimental Teaching Demonstration Center of TCM in Xinjiang Medical University

Department of traditional medicine ,TCM

Xinjiang Medical University

Xinjiang CHINA 830054

**Dr. Ramachandra Setty Siddamsetty,**

Professor, Govt College of Pharmacy,

Mission Road, Bengaluru, INDIA

**Dr. (Mrs.) Sayyada Khatoon**

HOD, Pharmacognosy Division  
CSIR-National Botanical Research Institute,  
Rana Pratap Marg, Post Box 436,  
Lucknow-226001 (U.P.) India

**Dr. A. Sajeli Begum**

Department of Pharmacy  
Birla Institute of Technology & Science  
Hyderabad, India

**Olga Silva**

Department of Pharmacological Sciences,  
Faculdade de Farmácia,  
Universidade de Lisboa, Portugal

**Xinwen Wang**

Department of Clinical Pharmacy  
University of Michigan  
USA

**Roman Lysiuk**

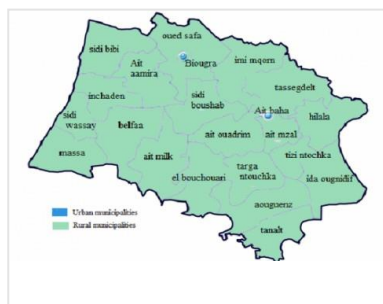
Department of Pharmacognosy and Botany,  
Danylo Halytsky Lviv National Medical University,  
Pekarska,69., Lviv 79010, Ukraine

**Arif Nur Muhammad Ansori**

Universitas Airlangga  
Indonesia

# Pharmacognosy Journal, Vol 14, Issue 6 (Suppl.), Nov-Dec, 2022

## RECENT ARTICLES



### Original Article

## Medicinal Plants Adopted to Treat Children's Diseases by Traditional Pediatrics "Women Healers" In The Souss Massa Region (Agadir Idaoutanan, Inzegane Ait Meloul and Chtouka Ait Baha) Morocco

Taleb Ali Khalid, Aarab Ahmed

**Pharmacognosy Journal**,14(6s):880-886

**DOI:** 10.5530/pj.2022.14.183

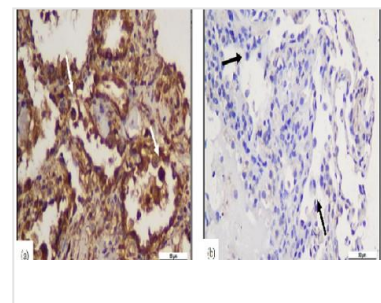
*Published: Tue, 3-Jan-2023*

[Read More](#)

### Original Article

## Differences in interleukin-6 and interleukin-17 expression in covid-19 post-mortem lung tissue biopsy compared with noncovid- 19

Etty Hary Kusumastuti, Priangga Adi Wiratama, Grace Ariani, Stephanie Natasha Djuanda, Alphania Rahniayu, Nila Kurniasari, Dyah Fauziah, Anny Setijo Rahaju, Isnin Anang Marhana, Al an Nur Rosyid, Dwi Wahyu, Gilang Muhammad S. Nugroho, Adhitri Anggoro, Komang Rusgi Yandi, Bambang Pujo Semedi, Jilientasia Godrace Lilihata, Ummi Maimunah, Achmad Le , Lalu Galih Prat Rinjani, Edi Suyanto, Ricardo Ardian Nugraha



**Pharmacognosy Journal**,14(6s):887-892 **DOI:**

10.5530/pj.2022.14.184

*Published: Tue, 3-Jan-2023*

[Read More](#)

### Original Article

## Kaempferia galanga L. Extract Administration Attenuate Aquaporin-4 Expression in Traumatic



## Brain Injury: An Experimental Study in Rats

Fajar Herbowo Niantiarno, Agus Turchan, Myrna Adianti, Budi Utomo, Muhammad Ari n Parenrengi, Abdul Ha d Bajamal

**Pharmacognosy Journal**,14(6s):893-897 **DOI:**

10.5530/pj.2022.14.185

*Published: Tue, 3-Jan-2023*

[Read More](#)

---

Original Article

**Effect of Pomegranate Extract On N-Terminal Pro Brain Natriuretic Peptide and Asymmetric Dimethylarginine Levels in Children with Pulmonary Artery Hypertension in Acyanotic Congenital Heart Disease**

Sari Yunita Suk Noer, Mahrus A. Rahman, Budi Utomo





**Pharmacognosy Journal**,14(6s):898-904 DOI:

10.5530/pj.2022.14.186

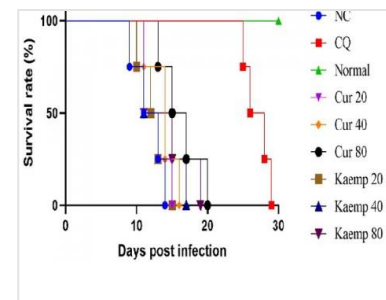
Published: Tue, 3-Jan-2023

[Read More](#)

Original Article

## Evaluation of Experimental Cerebral Malaria of Curcumin and Kaempferol in Plasmodium berghei ANKA-Infected Mice

Maulana Yusuf Alkandahri,A at Berbudi,Anas Subarnas



**Pharmacognosy Journal**,14(6s):905-911 DOI:

10.5530/pj.2022.14.187

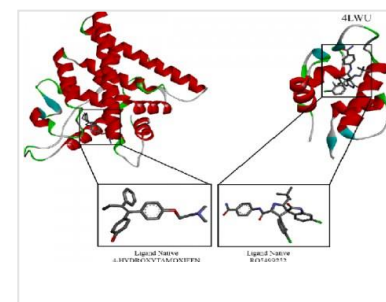
Published: Fri, 6-Jan-2023

[Read More](#)

Original Article

## Molecular Docking Estrogen Receptor Alpha Antagonist and P53- MDM2 Inhibitor, ADMET Prediction of Alkaloid Compound from Mitragyna speciosa for Breast Cancer Therapy

Puja Adi Priatna,Rizki Rahmadi Pratama,Retno Widyowati,



**Pharmacognosy Journal**,14(6s):912-916 DOI:

10.5530/pj.2022.14.188

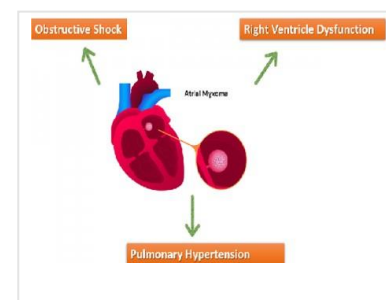
Published: Fri, 6-Jan-2023

[Read More](#)

Original Article

## Left Atrial Myxoma Presented with an Obstructive Shock, Right Ventricle Dysfunction and Pulmonary Hypertension

Wisda Medika Valentidenta,Agus Subagjo,Dandy Hertriwibowo



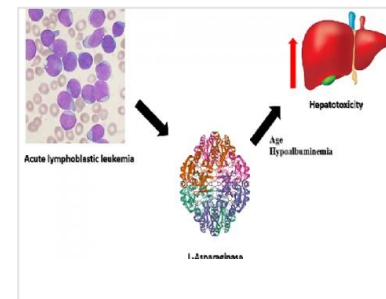
**Pharmacognosy Journal**,14(6s):917-920

**DOI:** 10.5530/pj.2022.14.189*Published: Fri, 6-Jan-2023*[Read More](#)

Original Article

## Risk Factors for Hepatotoxicity From L-Asparaginase Chemotherapy In Children With Acute Lymphoblastic Leukemia

Agniya Ali Fahmi Hikmat, Mia Ratwita Andarsini, Bagus Setyo boedi, Maria Christina Larasati, Andi Cahyadi, Dewa Gede Ugrasena

**Pharmacognosy Journal**,14(6s):921-927 **DOI:**

10.5530/pj.2022.14.190

*Published: Tue, 3-Jan-2023*[Read More](#)

Original Article

## Phytochemical Approach Including Total Phenolic and Flavonoid Contents and Evaluation of in vitro ABTS Antioxidant Capacity and Lipoxxygenase Inhibition of Anisosciadium lanatum 1894)

Mohammed Wasel Matar, Shahad Mohammed N. Alqahtani, Duaa Adnan Algha i, Abdullah Abdulhamid Altaweel, Abdullah Jalal Alasoom, Hussein Ali Burshed, Marwan Mohamed Alshawush, Hany Ezzat Khalil



1894)

**Pharmacognosy Journal**,14(6s):928-932 **DOI:**

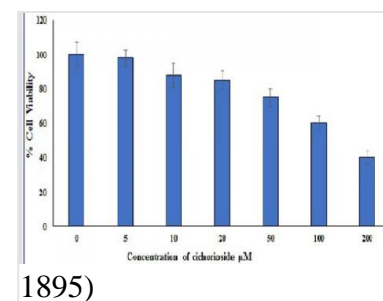
10.5530/pj.2022.14.191

*Published: Tue, 3-Jan-2023*[Read More 1894\)](#)

Original Article

## Cichorioside a biocoumarin modulates lipid and glucose storage on 3T3-L1 cell lines: In vitro and in silico approach 1895)

Shahad Mohammed N. Alqahtani, Dalya Ramzi Alsuliman, Abdullah Jalal Alasoom, Hussein Ali Burshed, Marwan Mohamed



1895)

Alshawush,Abdullah Abdulhamid Altaweel,Hany Ezzat Khalil

**Pharmacognosy Journal**,14(6s):933-937 **DOI:**

10.5530/pj.2022.14.192

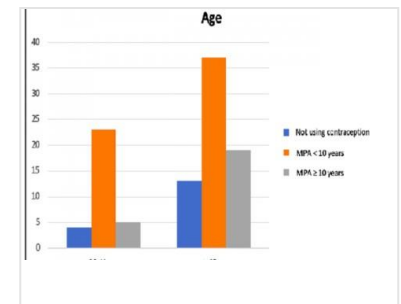
*Published: Wed, 4-Jan-2023*

[Read More](#) 1895)

Original Article

## Relationship Histopathology Grading of Meningioma with the Use of Medroxyprogesterone Acetate (MPA) as A Hormonal Contraceptive

Shafhan Dustur,Joni Wahyuhadi,Budi Utomo,Muhammad Ari n Parenrengi,Abdul Ha d Bajamal,Sri Ratna Dwiningsih



**Pharmacognosy Journal**,14(6s):938-941 **DOI:**

10.5530/pj.2022.14.193

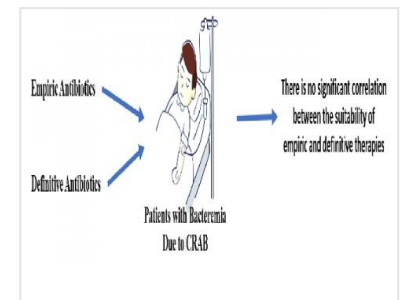
*Published: Wed, 4-Jan-2023*

[Read More](#)

Original Article

## Correlation Between the Suitability of Empirical and De nitive Therapies According to Culture Results with the Clinical Outcomes of Patients with Bacteremia Due to Carbapenem- Resistant Acinetobacter baumannii (CRAB) at Dr. Soetomo Tertiary Referral Hosp

Nafdzu Makhmudatu Muna,Ni Made Mertaniasih,Pepy Dwi Endraswari



**Pharmacognosy Journal**,14(6s):942-947 **DOI:**

10.5530/pj.2022.14.194

*Published: Wed, 4-Jan-2023*

[Read More](#)

Research Article

## GC-MS Analysis of Volatiles Present in Papea Capensis Extracts

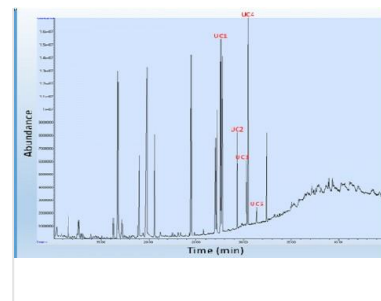
Makhoahle PM

**Pharmacognosy Journal**,14(6s):948-954 DOI:

10.5530/pj.2022.14.195

*Published: Wed, 4-Jan-2023*

[Read More](#)



Research Article

## Phytochemical Analysis and Antioxidant Activity of Water Hyacinth Flowers (Eichhornia Crassipes) Extract

Ace Baehaki, Shanti Dwita Lestari, Wiwira Agustina, Sintya Dwika Putri

**Pharmacognosy Journal**,14(6s):955-957 DOI:

10.5530/pj.2022.14.196

*Published: Wed, 4-Jan-2023*

[Read More](#)



Research Article

## Research on External Signs and Chemical Composition of Medicinal Plant Raw Material - Leaves of Ficus Elastica

Angelina V. Strelyaeva, Anna G. Kharitonova, Larisa B. Vaskova, Alexander N. Luferov, Dmitry O. Bokov, Alina A. Bondar, Natalia V. Bobkova, Nevena Jeremic, Yulia B. Lazareva, Alla M. Antsyshkina, Tatiana V. Prosdusheva, Roman M. Kuznetsov

**Pharmacognosy Journal**,14(6s):958-972 DOI:

10.5530/pj.2022.14.197

*Published: Wed, 4-Jan-2023*

[Read More](#)

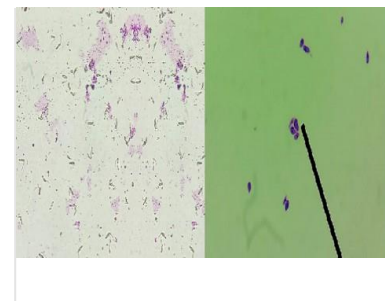


Research Article



## Antiparasitic effect of *Psidium guajava* on promastigotes and axenic amastigotes of *Leishmania*

Jesús Rojas-Jaimes, Marco Mesía-Guevara, Maria Rojas-Puell, Luis Castañeda Pelaez



**Pharmacognosy Journal**,14(6s):973-977 DOI:

10.5530/pj.2022.14.198

*Published: Wed, 4-Jan-2023*

[Read More](#)

Research Article

## The Serum Formulation of Hati Tanah Tuber Ethanol Extract from Central Kalimantan

Nurul Qamariah, Rezqi Handayani, Jessika Maretania



**Pharmacognosy Journal**,14(6s):978-982 DOI:

10.5530/pj.2022.14.199

*Published: Wed, 4-Jan-2023*

[Read More](#)

Research Article

## Job fulfillment and its related variables among pharmacy certificate holders in Jordan: A Cross-sectional Study

Noha Abd Alkare Younis



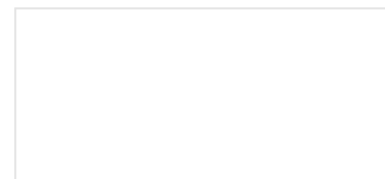
**Pharmacognosy Journal**,14(6s):983-988 DOI:

10.5530/pj.2022.14.200

*Published: Wed, 4-Jan-2023*

[Read More](#)

Research Article



## Chemical Profiling of Nonpolar Compounds of Onopordum Acanthium using GCMSS

Amjad I. Oraibi, Hayder M. Abdulhamza

**Pharmacognosy Journal**, 14(6s):989-992 DOI:

10.5530/pj.2022.14.201

*Published: Wed, 4-Jan-2023*

[Read More](#)



Research Article

## Antioxidant, Antimicrobial, and Antiplasmodial Activities of Sonchus arvensis L. Leaf Ethyl Acetate Fractions

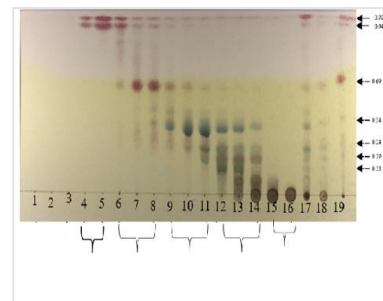
Dwi Kusuma Wahyuni, Anindya Nariswari, Agus Supriyanto, Hery Purnobasuki, Hunsu Punnapayak, Wichanee Bankeeree, Sehanat Prasongsuk, Wiwied Ekasari

**Pharmacognosy Journal**, 14(6s):993-998 DOI:

10.5530/pj.2022.14.202

*Published: Fri, 6-Jan-2023*

[Read More](#)



Research Article

## Senna Siamea Hexane Extract: Potent Antifungal Activity Against Candida albicans, Candida Krusei and Identification of Its Chemicals Content

Diny Kamilah, Berna Elya, Robiatul Adawiyah, Annysa Ellycornia Silvyana

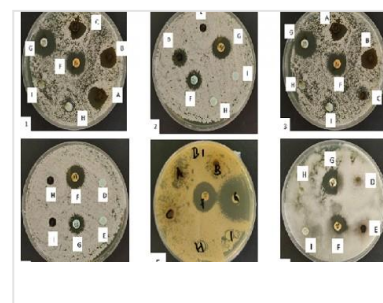
**Pharmacognosy Journal**, 14(6s):999-1004

DOI: 10.5530/pj.2022.14.203

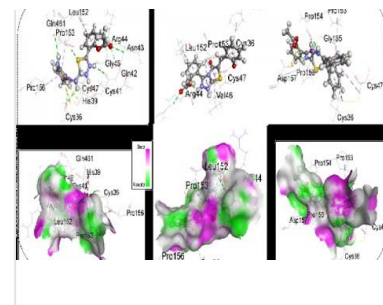
*Published: Wed, 4-Jan-2023*

[Read More](#)

Research Article



## DFT and Pharmacokinetic Study of Some Heterocyclic Aspirin Derivatives as The Cyclooxygenase Inhibitors: An In-Silico Approach



Emranul Kabir, M. R.O.Khan Noyon, Md. Amjad Hossain, Pranta Acharjee

**Pharmacognosy Journal**, 14(6s):1005-1021

**DOI:** 10.5530/pj.2022.14.204

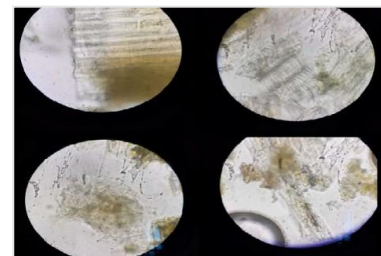
*Published: Tue, 10-Jan-2023*

[Read More](#)

Research Article

## Fingerprint and Multivariate Analysis of Apium Graveolens L. From Different Geographic with Spectroscopic ATR-FTIR

Wendy Nora Martian, Dini Kesuma, Rima Via Angraini



**Pharmacognosy Journal**, 14(6s):1022-1028

**DOI:** 10.5530/pj.2022.14.205

*Published: Fri, 6-Jan-2023*

[Read More](#)

Research Article

## Antibacterial Effect of Nigella sativa L. Seed from Indonesia

Em Sutrisna, Sri Wahyuni, Aris Fitriani



**Pharmacognosy Journal**, 14(6s):1029-1032

**DOI:** 10.5530/pj.2022.14.206

*Published: Wed, 4-Jan-2023*

[Read More](#)

## Successful Intrapericardial Fibrinolysis on Acute Recurrent Purulent Pericarditis with Impending Cardiac Tamponade during Pandemic Situation: A Rare Case Report

Muhammad Dedy Pratama, Budi Baktijasa  
Dharmadjati, Muhammad Rafdi Amadis, Ahmad Faisal Dwi  
Raharja, Muhammad Ramadhan, Dwika Rasyid Firmanda



**Pharmacognosy Journal**,14(6s):1033-1036

**DOI:** 10.5530/pj.2022.14.206

*Published: Wed, 4-Jan-2023*

[Read More](#)

### Research Article

## Bio-Evaluation, In-Vitro and In-Vivo Anti-Inflammatory Activity, Therapeutic Efficacy, and Genotoxicity of the Potentials of the Green Seaweed *Valoniopsis Pachynema* using Zebra Fish Larvae (*Danio Rerio*) as an Animal Model

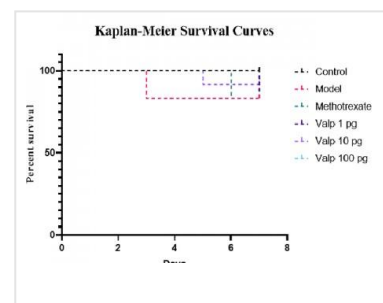
Bhuvaneshwari. J, Thirumalai Vasan. P

**Pharmacognosy Journal**,14(6s):1037-1053

**DOI:** 10.5530/pj.2022.14.208

*Published: Wed, 4-Jan-2023*

[Read More](#)



### Research Article

## Aquaporin 4 Expression on End Feet Astrocyte Before and After Cerebrospinal Fluid Drainage of Hydrocephalus Mice Model

Mustaqim Apriyansa Rahmadhan, Muhammad Ari n  
Parenrengi, Wihasto Suryaningtyas, Dyah Fauziah, Ketut  
Sudiana, Budi Utomo



**Pharmacognosy Journal**,14(6s):1054-1060

**DOI:** 10.5530/pj.2022.14.209

*Published: Wed, 4-Jan-2023*

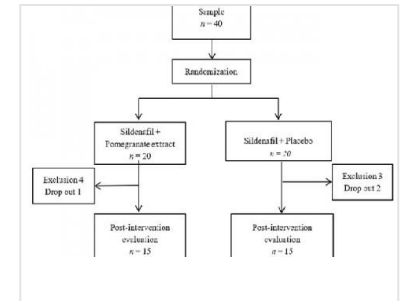


[Read More](#)

## Research Article

## Effects of Pomegranate Extract Supplementation (Punica granatum L.) on Clinical Manifestations of Pulmonary Arterial Hypertension in Children with Acyanotic Congenital Heart Disease

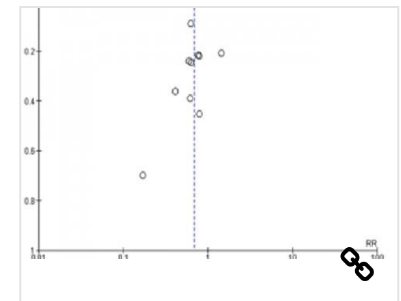
Audyilia Hartono, Mahrus A. Rahman, Budi Utomo

**Pharmacognosy Journal**,14(6s):1061-1066**DOI:** 10.5530/pj.2022.14.210*Published: Wed, 4-Jan-2023*[Read More](#)

## Review Article

## The Role of Breast Milk on Reducing the Risk of Neonatal Sepsis in Preterm and Low Birth Weight Infants: A Systematic Review and Meta-Analysis

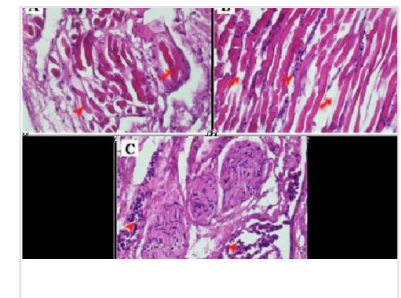
Tita Natalia Manurung, Citrawati Dyah Kenco Wungu, Martono Tri Utomo

**Pharmacognosy Journal**,14(6s):1067-1074**DOI:** 10.5530/pj.2022.14.211*Published: Wed, 4-Jan-2023*[Read More](#)

## Case Report

## Histopathological Perspectives of Multiple Organs in a Red- Footed Tortoise (Chelonoidis carbonaria) with Suspected Metabolic Bone Disease: A Case Report

Hani Plumeriastuti, Annise Proboningrat, Djoko Legowo, Bilqisthi Ari Putra, Gracia Angelina H, Agung Budiando Achmad

**Pharmacognosy Journal**,14(6s):1075-1078

**DOI:** 10.5530/pj.2022.14.212

*Published: Wed, 4-Jan-2023*

[Read More](#)

---

# Histopathological Perspectives of Multiple Organs in a Red-Footed Tortoise (*Chelonoidis carbonaria*) with Suspected Metabolic Bone Disease: A Case Report

Hani Plumeriastuti<sup>1,\*</sup>, Annise Proboningrat<sup>1</sup>, Djoko Legowo<sup>1</sup>, Bilqisthi Ari Putra<sup>1</sup>, Gracia Angelina Hendarti<sup>2</sup>, Agung Budiando Achmad<sup>3</sup>

Hani Plumeriastuti<sup>1,\*</sup>, Annise Proboningrat<sup>1</sup>, Djoko Legowo<sup>1</sup>, Bilqisthi Ari Putra<sup>1</sup>, Gracia Angelina Hendarti<sup>2</sup>, Agung Budiando Achmad<sup>3</sup>

<sup>1</sup>Division of Veterinary Pathology, Faculty of Veterinary Medicine, Universitas Airlangga, Surabaya, INDONESIA.

<sup>2</sup>Division of Veterinary Anatomy, Faculty of Veterinary Medicine, Universitas Airlangga, Surabaya, INDONESIA.

<sup>3</sup>Department of Health, Faculty of Vocational Studies, Universitas Airlangga, Surabaya, INDONESIA.

## Correspondence

Hani Plumeriastuti

Division of Veterinary Pathology, Faculty of Veterinary Medicine, Universitas Airlangga, Surabaya, INDONESIA.

E-mail: hani-p@fkh.unair.ac.id

## History

- Submission Date: 13-11-2022;
- Review completed: 19-12-2022;
- Accepted Date: 21-12-2022.

DOI : 10.5530/pj.2022.14.212

## Article Available online

<http://www.phcogj.com/v14/i6>

## Copyright

© 2022 Phcogj.Com. This is an open-access article distributed under the terms of the Creative Commons Attribution 4.0 International license.

## ABSTRACT

Introduction: Exotic pet lovers' interest in keeping tortoises is increasing all over the world, including Indonesia. However, this trend cannot be separated from the potential emergence of various health problems in tortoises. One of the problems that often affects tortoises is metabolic bone disease. Metabolic bone disease (MBD) is a disorder related to the mechanisms of vitamin D and calcium metabolism, which generally occurs in reptiles, especially Chelonia and Lizards. Case Presentation: A 3-month-old red-footed tortoise, which was clinically suspected to have a MBD, was necropsied as an effort to support the provisional diagnosis through histopathological evaluation. The purpose of this examination was to analyze the impact of the disease on various organs microscopically in patients with suspected MBD. The results showed a decrease in the number of trabeculae and hematopoietic cells in the metatarsal bones; moderate myonecrotic changes and atrophy in the skeletal muscle; inflammation of the perineuron; acute tubular necrosis and mild edema of the renal cortex; congestion and an increase in the number of melanomacrophages in the liver; as well as epicarditis and myocarditis in the heart. Conclusion: Several forms of the histopathological changes seem to indicate a pathophysiological relationship between the suspected metabolic bone disease and the multiple organs examined.

Key words: Hematoxylin-eosin, MBD, Tortoise, Septicemia.

## INTRODUCTION

In the last decade, the trend of domesticating tortoises as pets in urban families is increasing and popular around the world.<sup>1</sup> In Indonesia, the sulcata tortoise is one of the most popular tortoise pets because it is easy to find this captive breed in the reptile pet market.<sup>2</sup> Another tortoise that is frequently kept as a traditional pet in houses is the red-footed tortoise.<sup>3</sup> Their ease of care, low cost of ownership, and amazing coloration make them highly sought after by novice tortoise keepers.

The red-footed tortoise (*Chelonoidis carbonaria*) are members of the Anapsida subclass, Chelonia order, Cryptodira suborder, Testudines family, and Chelonoidis genus.<sup>4</sup> This species is native to South America and can be found from Panama to Paraguay, as well as parts of Bolivia, Brazil, Colombia, Ecuador, and Peru.<sup>5</sup> *C. carbonaria* is a diurnal and terrestrial animal with a compact body and strong cylindrical limbs, ideal to support its heavy carapace and walk in rough terrain.<sup>4,5</sup> They are opportunistic omnivores in general, and their diet is heavily influenced by the seasonal availability of food.<sup>6</sup> Their main food sources are leaves, grasses, flowers, fruits, carcasses, and other food found on the ground.<sup>4</sup>

The increasing trend of keeping tortoises among exotic animal enthusiasts also has the potential to lead to many health problems.<sup>1</sup> *C. carbonaria* is the most common testudines kept as a pet in South America, which accounts for a large proportion of wildlife patients seen in veterinary practices.<sup>4</sup> In

Indonesia, according to Raharjo *et al.*,<sup>2</sup> a study on the prevalence of disease in exotic pet patients at a clinic in Yogyakarta, Indonesia, during January-August 2020 showed that turtles and tortoises had the highest cases of 71.7%, compared to snakes (16.5%), iguanas (6.2%), lizards (4.1%), crocodiles (1%), and geckos (0.5%).

Management of nutrition, health, housing, and an inappropriate environment are predisposing factors to serious health issues in tortoises if not anticipated and treated immediately. Some of the health issues that tortoises in captivity can face include respiratory ailments caused by bacterial or viral infection,<sup>7-10</sup> gastro-intestinal disease caused by parasite or viral infection,<sup>8,11,12</sup> and nutritional and metabolic disorders.<sup>13-15</sup>

Metabolic bone disease (MBD) is one of the metabolic disorders commonly seen in captive reptiles, particularly in Chelonia (turtles, tortoises, and terrapins) and lizards, occasionally in snakes.<sup>16</sup> In veterinary medicine, MBD refers to a group of pathological conditions that affect the integrity and function of multiple bones.<sup>17</sup> They are most generally caused by genetic, dietary, and/or hormonal disorders that impact bone growth and remodeling, typically through changes in calcium/phosphorus metabolism. MBD has traditionally been broken down as fibrous osteodystrophy, osteoporosis, and rickets/osteomalacia; however, many cases are difficult to specifically classify, particularly those caused by nutritional deficiencies, because multiple conditions may coexist. Therefore, cases reported in the literature should be scrutinized carefully, and

**Cite this article:** Plumeriastuti H, Proboningrat A, Legowo D, Putra BA, Hendarti GA, Achmad AB. Histopathological Perspectives of Multiple Organs in a Red-Footed Tortoise (*Chelonoidis carbonaria*) with Suspected Metabolic Bone Disease: A Case Report. Pharmacogn J. 2022;14(6) Suppl: 1075-1078.

confirmation by histopathological evaluation should be regarded as more definitive.<sup>18</sup> The aim of this study was to report the occurrence of suspected MBD in red-footed tortoise (*C. carbonaria*) and describe the histopathological findings in several organs associated with the disease. This study also tried to describe the relationship between the suspected MBD and the histopathological changes that occur in several observed organs.

## CASE PRESENTATION

### History

A 3-month-old dead red-footed tortoise (*Chelonoidis carbonarius*) weighing approximately 50 grams with a carapace length of 6 cm (Figure 1A-B) was sent to our laboratory. According to the information from the sender, the tortoise had clinical symptoms of inappetence, anorexia, an abnormal gait, and weakness. Previously, it had a history of shipping that was too long, about seven days, to finally die. Another tortoise, similar in age and weight, maintained together, had similar complaints.

### Post-mortem findings

The post-mortem investigation that had been performed showed that the carapace and plastron were tender. No abnormal conditions such as swelling, trauma, or injuries were found on the results of other external examinations. On internal examination after necropsy, no significant macroscopic changes were found in the organs, such as inflammation, bleeding, enlargement or reduction in organ size, changes in color and consistency, and accumulation of fluid in the celomic cavity. Only one colon enlargement was found. Some organs, such as the kidney, liver, heart, hind leg musculature, and metatarsals, were collected for tissue processing. Unfortunately, the intestine tissue could not be collected for histopathological examination (Figure 1C).

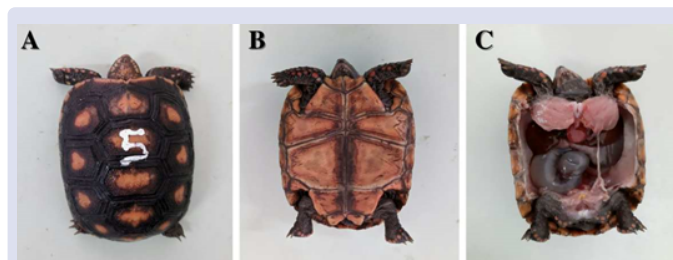
### Histopathological findings

On the results of the microscopical examination of tortoise metatarsal bones that had been stained with hematoxylin and eosin, there was a decrease in the number of trabecular bones in the epiphysis and hematopoietic cell loss (Figure 2A). Some sections also showed the presence of hyaline cartilage in the middle of the mature trabecular bone matrix (Figure 2B). In skeletal muscles, it was observed that many cells of the skeletal muscles were necrotic and some were atrophic (Figure 3A). Inflammatory cell infiltration also occurs between the striated muscle fibers accompanied by edema (Figure 4B). Peripheral nerve cells also underwent lysis and inflammation (Figure 3C).

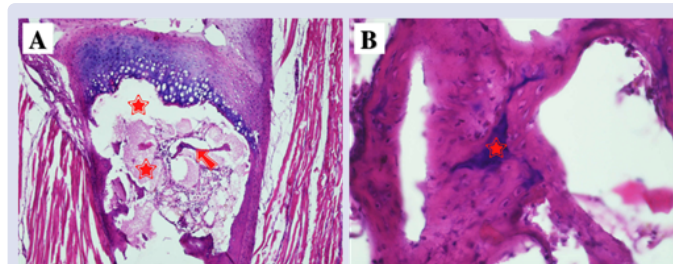
On microscopic examination of the kidney, edema appeared in two of the four lobes of the kidney (Figure 4A). The appearance of massive acute tubular necrosis was also clearly seen, characterized by convoluted proximal tubules that mostly underwent cell lysis and nuclear pyknosis (Figure 4B). Mild to moderate congestion was observed in the liver sinusoids (Figure 5A). An increase in the number of melanomacrophages has also occurred, and some have formed melanomacrophage centers (MMC). Additionally, there are few eosinophilic granular cells (EGCs) and some infiltrating lymphocytes that aggregate to form lymphoid follicles (Figure 5B). Furthermore, microscopic observation also showed that the tortoise heart experienced epicarditis, myocarditis, and endocarditis, indicated by fairly massive lymphocytic infiltration in the epicardium, myocardium, and lumen of the endocardium, respectively (Figure 6A-B).

## DISCUSSION

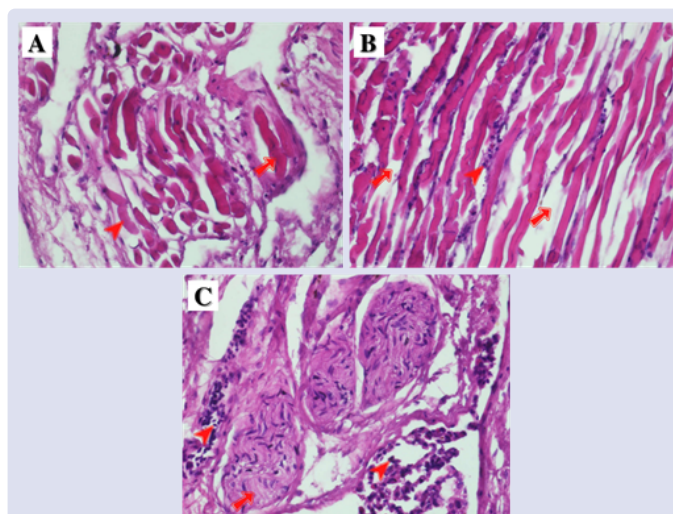
Based on clinical symptoms and the reported history, it was assumed that the tortoise that had been necropsied had MBD. One of the strong supporting reasons is hypocalcemia-induced vitamin D deficiency,



**Figure 1:** Gross examination of the tortoise body suspected of having MBD. A: The dorsal view. B: The ventral view. C: Gross appearance of the internal organs.

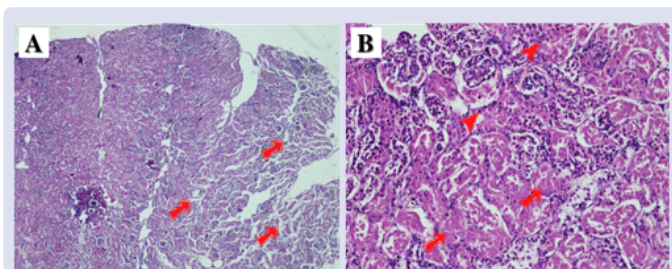


**Figure 2:** Histopathological appearance of the metatarsal bone of tortoise with suspected MBD (hematoxylin-eosin staining). A: metatarsal epiphyses with fewer trabeculae (arrow) and loss of hematopoietic cell (arrowhead) (100× magnification). B: hyaline cartilage (star) within the trabecular matrix (400× magnification).

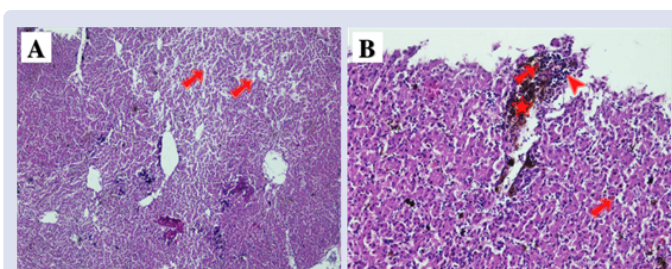


**Figure 3:** Histopathological appearance of tortoise skeletal muscles with suspected MBD (hematoxylin-eosin staining, 400× magnification). A: striated muscles with atrophic (arrowhead) and necrotic (arrow). B: edema (arrow) and infiltration of inflammatory cells (arrowhead) between muscle fibers. C: peripheral nerve cell lysis (arrow) and inflammatory cell (arrowhead) infiltration.

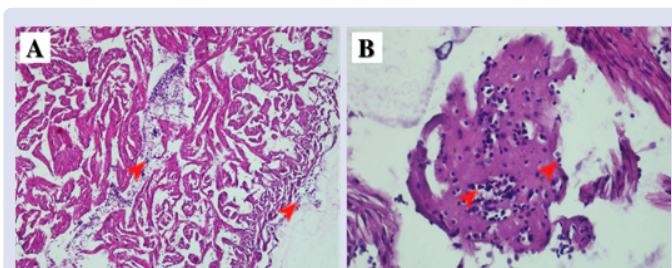
which is related, first, to lack of UV light (due to long shipping journeys) and proper temperature, and/or inadequate and balanced nutritional intake. Inadequate exposure to UVB rays causes the epidermal cells of animal skin to be unable to produce vitamin D3 (cholecalciferol) which is the result of the conversion of pre-vitamin D and its precursor, pro-vitamin D (7-dehydrocholesterol). Deficiency of vitamin D3 in the blood circulation causes the liver to lack its capacity to produce calcidiol or 25-(OH)-vitamin D3 as the main storage form of vitamin D3. This continues to cause kidneys to fail to hydroxylate calcidiol to produce 1,25-(OH)<sub>2</sub>-vitamin D3 or calcitriol, which plays a vital role in the regulation of calcium and phosphorus balance.<sup>19</sup>



**Figure 4:** Histopathological appearance of the renal cortex of tortoise with suspected MBD (hematoxylin-eosin staining). A: edema (arrow) of the two right lobes of the kidney (40× magnification). B: pyknotic (arrowhead) and karyolytic (arrow) of convoluted tubule cells (200× magnification).



**Figure 5:** Histopathological appearance of the liver parenchyma of tortoise with suspected MBD (hematoxylin-eosin staining). A: some areas of the liver are congested (arrow) (40× magnification). B: infiltration of lymphocytes (arrowhead), eosinophilic granular cells (arrow), and melanomacrophage centers (star) (200× magnification).



**Figure 6:** Histopathological appearance of the tortoise heart with suspected MBD (hematoxylin-eosin staining). A: infiltration of lymphocytic cells (arrowhead) in the epicardium and myocardium (100× magnification). B: infiltration of lymphocytic cells (arrowhead) in the lumen of the endocardium (400× magnification).

The endocrine hormone calcitriol is known to increase intestinal absorption of dietary calcium and phosphate, stimulate the storage of calcium and phosphate in the kidneys, and, together with parathyroid hormone (PTH), has a direct effect on bone by regulating calcium mobilization from bone. Lack of this hormone can cause disturbances in bone growth and development, as well as in maintaining mature bone tissue.<sup>20</sup>

Hypocalcemia due to hypovitaminosis D is usually compensated by increased secretion of PTH from hyperplastic parathyroid glands and subsequently hyperparathyroidism, leading to resorption of calcium from bone.<sup>21</sup> Unfortunately, this study did not observe the histopathological features of the parathyroids, so the hyperparathyroidism in this case could not be confirmed.

Another possibility that can occur is low calcitriol so that the body cannot limit the occurrence of osteoclastogenesis and trigger bone resorption by osteoclasts, resulting in osteopenia.<sup>22,23</sup> This may explain the loss of the large amount of trabecular bone in the metatarsal tortoise

epiphyses that we observed. The loss of trabecular continuity leads to a reduction in the ability of the trabecular to withstand stress;<sup>23</sup> therefore, the tortoise appears to have an abnormal gait.

In this study, it was also found that there is cartilage within the trabecular matrix. This may be related to disturbances in endochondral ossification during the development of the young tortoise. Osteochondrosis is a disorder of chondrocyte maturation that results in delayed cartilage mineralization. In addition to calcitriol, 24,25-(OH)<sub>2</sub>-vitamin D<sub>3</sub> produced by calcidiol hydroxylation in the proximal renal tubule also plays an important role in cartilage cell differentiation and matrix mineralization. This imbalance in plasma concentrations between vitamin D metabolites appears to be related to the disposition of osteochondrosis during the growth period of the animal.<sup>24</sup>

Under normal conditions, bone marrow in newborns and very young animals is mainly composed of active hematopoietic tissue and has relatively few fats.<sup>23</sup> This study found that the bone marrow within the epiphyseal metatarsal of the tortoise was hypocellular with a significantly reduced number of hematopoietic cells. It is still unclear how the pathophysiological relationship with the suspected MBD occurs. In another case, Turnbull *et al.*<sup>25</sup> also reported bone marrow hypocellularity in hypothermic sea turtles. Bone marrow hypoplasia is commonly found in animals and humans with aplastic pancytopenia, a rare condition in which all hematopoietic lines in the bone marrow are aplastic or severely hypoplasiated, resulting in bone marrow failure. The cause is usually chemical agents that are cytotoxic to hematopoietic cells, or mutations or perturbations in hematopoietic cells and their environment caused by infectious agents.<sup>23</sup>

In this study, indications of infection and sepsis were also found, possibly due to microbial flora, in the tortoise suspected of having MBD. The association between decreased bone mineral density (BMD) and the risk of infection and sepsis has recently been reported. Previous studies have shown that BMD is a prognostic factor for infections and sepsis in human patients. Schulze-Hagen *et al.*<sup>26</sup> found that low BMD was closely related to high mortality rates in intensive care units, while patients with pulmonary infections had the lowest BMD. A recent study even demonstrated that low BMD is not only a potential predictor for patients with infections and sepsis, but also a new risk factor for infections and sepsis.

Sepsis occurs after bacterial infections, leading to severe sepsis and septic shocks characterized by low blood pressure, ischemic, failure of multiple organs, and death.<sup>27</sup> In this case, it was observed that there was inflammation of the liver, heart, muscles, and peripheral nerves, as well as renal tubular necrosis that can lead to acute renal failure. The decrease in the number and function of osteoblasts, associated with altered expression of IL-7 and lipocalin-2, may have a negative impact on body's immunity and thus increase sensitivity to infections. Vitamin D may also explain the connection between BMD and infections and sepsis.<sup>28</sup> However, much remains to be done to confirm the factors and analyze the association between bone metabolism disorders and sepsis.

## CONCLUSION

In conclusion, this study reports that the young tortoise necropsied had a number of pathological conditions that led to suspicion of MBD. Inflammation of multiple organs due to sepsis that we found also seems to have a pathophysiological relationship with this disorder of bone metabolism. Further study is warranted to reach a convincing confirmation by further laboratory diagnostics (blood calcium, parathyroid hormone, etc.) and investigate the relationship between MBD and the risk of infection and sepsis in animals.

## CONFLICTS OF INTEREST

The authors declare no conflicts of interest.

## ACKNOWLEDGEMENTS

The authors express their gratitude to Fajar Dany Prabayudha as a herpetologist, Arif Nur Muhammad Ansori for helping improve the final writing of this manuscript, and the co-assistant students of the Division of Veterinary Pathology (Faculty of Veterinary Medicine, Universitas Airlangga) who assisted in finding the sample cases for this study.

## REFERENCES

1. Patel R, Patel R. Therapeutic management in a tortoise affected concurrently with metabolic bone disease and respiratory infection-a case report. *Int J Curr Microbiol Appl Sci.* 2020;9(10):792-7.
2. Raharjo S, Widyarini S, Indarjulianto S, Yanuartono. Surgical removal of bladder stone in a sulcata tortoise (*Centrochelys sulcata*): A case study. *IOP Conf. Ser: Earth Environ Sci.* 2022;976:012010.
3. Mendoza P, Cerdan I, Garcia B, Furuta C, Di Santo L, Sanfilippo LF, et al. Influence of incubation temperature on embryo development, hatchling morphology and early growth rate in red-footed tortoise (*Chelonoidis carbonaria*). *Comp Biochem Physiol.* 2021;259:110999.
4. da Silva LCC, Bonelli MA, Eameh-de-Albuquerque LC, Zanotti AP, de Siqueira DB, Fernandes THT, et al. Computed tomography of the lungs of healthy captive red-footed tortoises (*Chelonoidis carbonaria*). *J Exot Pet Med.* 2020;34:27-31.
5. Mendoza P, Furuta C, Garcia B, Zena LA, Artoni S, Dierenfeld ES, et al. Starch and fiber intake effects on energy metabolism, growth, and carapacial scute pyramiding of red-footed tortoise hatchlings (*Chelonoidis carbonaria*). *Comp Biochem Physiol.* 2022;265:111131.
6. Mendoza P, Furuta C, Dierenfeld ES, Carciofi AC. Effect of environmental temperature and diet on the digestive response of red-footed tortoise *Chelonoidis carbonaria* hatchlings. *J Zoo Aquar Res.* 2022;10(2):91-100.
7. Papp T, Seybold J, Marschang RE. Paramyxovirus infection in a Leopard tortoise (*Geochelone pardalis babcocki*) with respiratory disease. *J Herpetol Med Surg.* 2010;20(2-3):64-8.
8. Gibbons PM, Steffes ZJ. Emerging infectious diseases of Chelonians. *Vet Clin North Am Exot Anim Pract.* 2013;16(2):303-17.
9. Silveira MM, Morgado T, Lopes ÉR, Kempe GV, Correa SHR, de Godoy I, et al. Bacterial pneumonia in red-footed tortoise (*Chelonoidis carbonaria*): Clinical aspects, microbiological, radiological and therapeutic. *Pesqui Vet Bras.* 2014;34(9):891-5.
10. Ballouard J-M, Bonnet X, Jourdan J, Martinez-Silvestre A, Gagno S, Fertard B, et al. First detection of herpesvirus and mycoplasma in free-ranging Hermann's tortoises (*Testudo hermanni*), and in potential pet vectors. *Peer Com J.* 2021;2:e5.
11. Hallinger MJ, Taubert A, Hermosilla C, Mutschmann F. Occurrence of health-compromising protozoan and helminth infections in tortoises kept as pet animals in Germany. *Parasit Vectors.* 2018;11(1):352.
12. Springer CC, Kinsella M, Vasuki V, Sharma RN. Gastrointestinal parasitic nematodes in pet red-footed tortoises (*Chelonoidis carbonaria*) from Grenada, West Indies. *Heliyon.* 2020;6(6):e04119.
13. Sari DAK. Teknik transplastron coeliotomy pada kura *Geochelone sulcata* dengan kasus bladder stone. *Vet Let.* 2020;4(2):31-2.
14. Santos UG, Queiroz CRR, Hirano LQL, Santos MVB, Cavalcante AKS, Macêdo JTSA, et al. Anatomopathological findings of testudines necropsied in the Distrito Federal, Brazil. *Pesqui Vet Bras.* 2022;42:e06953.
15. Sartori MR, Navarro CDC, Castilho RF, Vercesi AR. Aggravation of hepatic lipidosis in red-footed tortoise *Chelonoidis carbonaria* with age is associated with alterations in liver mitochondria. *Comp Biochem Physiol, Part B.* 2022;260:110731.
16. Hedley J. Metabolic bone disease in reptiles: Part 1. *Companion Anim.* 2012;17(6):52-4.
17. Doneley B, Monks D, Johnson R, Carmel B. *Reptile Medicine and Surgery in Clinical Practice* 1st ed. John Wiley & Sons. 2017.
18. Uhl EW. The pathology of vitamin D deficiency in domesticated animals: An evolutionary and comparative overview. *Int J Palopathol.* 2018;23:100-9.
19. Diehl JJE, Baines FM, Heijboer AC, van Leeuwen JP, Kik M, Hendriks WH, et al. A comparison of UVb compact lamps in enabling cutaneous vitamin D synthesis in growing bearded dragons. *J Anim Physiol Anim Nutr.* 2018;102:308-16.
20. Kumar R, Tiwari RK, Asthana RK, Kumar P, Shahi B, Saha SK. Metabolic bone diseases of captive mammal, reptile and birds. *Approach Poultry Dairy Vet Sci.* 2018;3(3):235-9.
21. Hall G, Breheny C, Khan Z, Schawrz T, Mellaby RJ. Severe nutritional deficiencies and osteopenia in a dog fed a homemade raw diet. *Vet Rec Case Rep.* 2020;8:e001038.
22. Li A, Cong Q, Xia X, Leong WF, Yeh J, Miao D, et al. Pharmacologic calcitriol inhibits osteoclast lineage commitment via the BMP-Smad1 and IκB-NF-κB pathways. *J Bone Miner Res.* 2017;32(7):1406-20.
23. Zachary JF. *Pathologic Basis of Veterinary Disease* 7th ed. Elsevier. 2022.
24. Zafalon RVA, Ruberti B, Rentas MF, Amaral AR, Vendramini THA, Chacar FC, et al. The Role of Vitamin D in Small Animal Bone Metabolism. 2020;10(12):496.
25. Turnbull BS, Smith CR, Stamper A. Medical implications of hypothermia in threatened Loggerhead (*Caretta caretta*) and endangered Kemp's ridley (*Lepidochelys kempfi*) and Green (*Chelonia mydas*) sea turtles. *Int Assoc Aqua Anim Med.* 2000.
26. Schulze-Hagen MF, Roderburg C, Wirtz TH, Jördens MS, Bündgens, Jhaisa SA, et al. Decreased bone mineral density is a predictor of poor survival in critically ill patients. *J Clin Med.* 2021;10:3741.
27. Drosatos K, Lymperepoulos A, Kennel PJ, Pollak N, Schulze PC, Goldberg IJ. Pathophysiology of sepsis-related cardiac dysfunction: driven by inflammation, energy mismanagement, or both? *Curr Heart Fail Rep.* 2015;12(2):130-40.
28. Zhang X, Man K, Li GH, Tan KCB, Kung AW, Cheung C. Osteoporosis is a novel risk factor of infections and sepsis: A cohort study. *Clin Med.* 2022;49:101488.

**Cite this article:** Plumeriastuti H, Proboningrat A, Legowo D, Putra BA, Hendarti GA, Achmad AB. Histopathological Perspectives of Multiple Organs in a Red-Footed Tortoise (*Chelonoidis carbonaria*) with Suspected Metabolic Bone Disease: A Case Report. *Pharmacogn J.* 2022;14(6)Suppl: 1075-1078.